

Data Path : Z:\pestpcbsrv\HPCHEM1\ECD_P\Data\PP110822\
 Data File : PP053172.D
 Signal(s) : Signal #1: ECD1A.ch Signal #2: ECD2B.ch
 Acq On : 09 Nov 2022 00:20
 Operator : YP\AJ
 Sample : AR1242ICV500
 Misc :
 ALS Vial : 32 Sample Multiplier: 1

Instrument :
 ECD_P
ClientSampleId :
 ICVPP110822AR1242

Integration File signal 1: autoint1.e
 Integration File signal 2: autoint2.e
 Quant Time: Nov 09 08:47:30 2022
 Quant Method : Z:\pestpcbsrv\HPCHEM1\ECD_P\methods\PP110822.M
 Quant Title : GC EXTRACTABLES
 QLast Update : Wed Nov 09 05:50:05 2022
 Response via : Initial Calibration
 Integrator: ChemStation

Volume Inj. : 2 µl
 Signal #1 Phase : ZB-MR1 Signal #2 Phase: ZB-MR2
 Signal #1 Info : 30Mx0.32mmx 0.50µ Signal #2 Info : 30M x 0.32mm x 0.25µm

Compound	RT#1	RT#2	Resp#1	Resp#2	ng/ml	ng/ml

System Monitoring Compounds						
1) SA Tetrachlo...	4.400	3.646	107.7E6	88127601	56.031	58.586
2) SA Decachlor...	10.197	8.724	71819641	102.5E6	52.966	54.698
Target Compounds						
16) L4 AR-1242-1	5.573	4.746	25558980	22674220	524.462	514.283
17) L4 AR-1242-2	5.596	4.764	37860085	32805327	525.143	530.434
18) L4 AR-1242-3	5.658	4.944	23600626	17562035	527.000	528.798
19) L4 AR-1242-4	5.758	5.028	18894681	18463325	525.386	528.119
20) L4 AR-1242-5	6.497	5.559	19101799	23005929	523.200	525.359

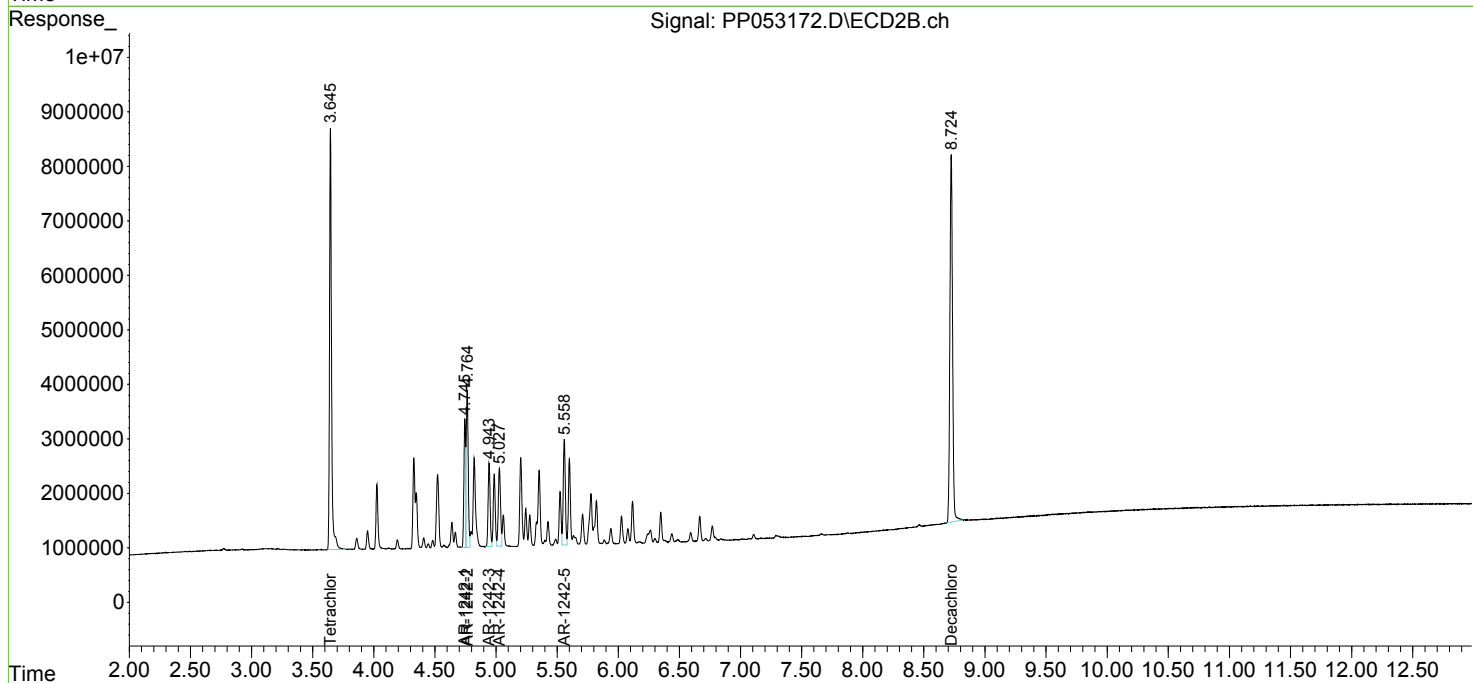
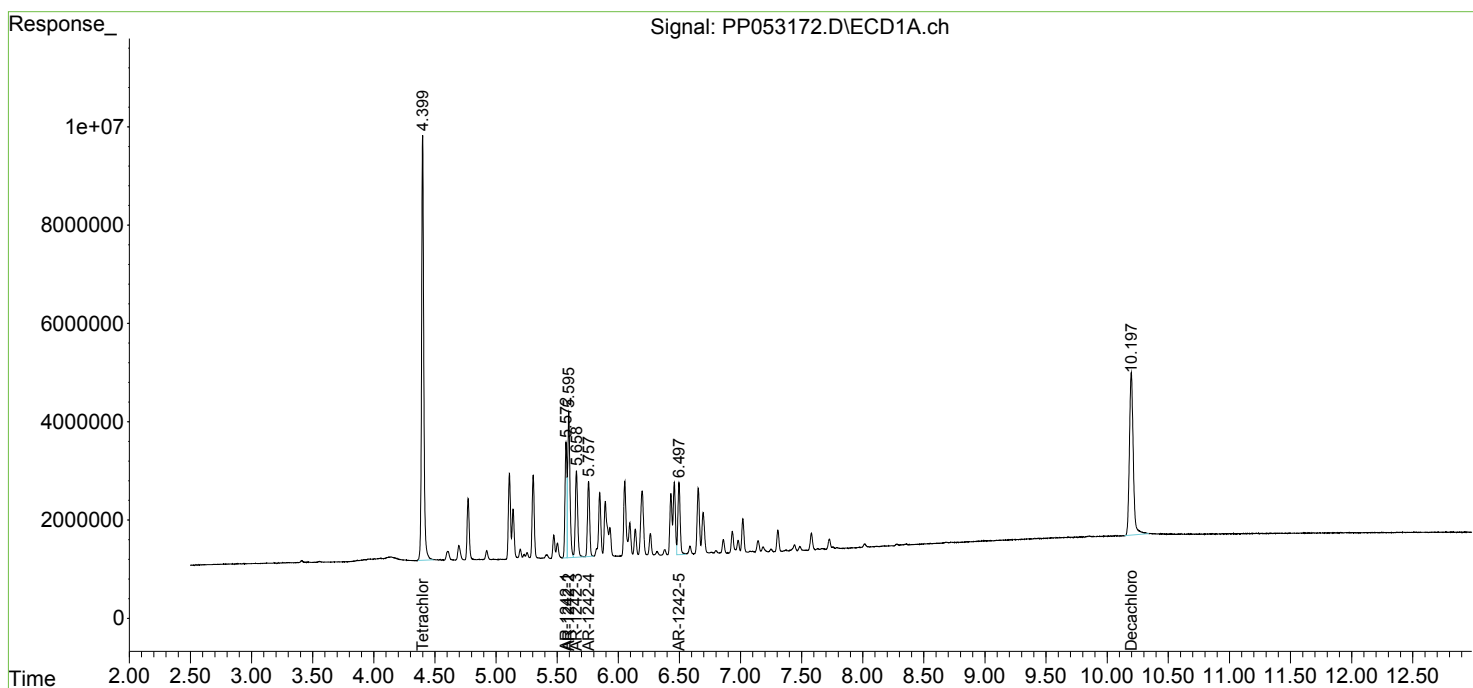
(f)=RT Delta > 1/2 Window (#)=Amounts differ by > 25% (m)=manual int.

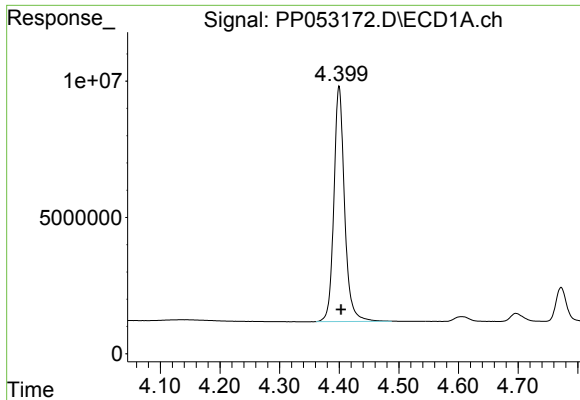
Data Path : Z:\pestpcbsrv\HPCHEM1\ECD_P\Data\PP110822\
 Data File : PP053172.D
 Signal(s) : Signal #1: ECD1A.ch Signal #2: ECD2B.ch
 Acq On : 09 Nov 2022 00:20
 Operator : YP\AJ
 Sample : AR1242ICV500
 Misc :
 ALS Vial : 32 Sample Multiplier: 1

Instrument :
 ECD_P
 ClientSampleId :
 ICVPP110822AR1242

Integration File signal 1: autoint1.e
 Integration File signal 2: autoint2.e
 Quant Time: Nov 09 08:47:30 2022
 Quant Method : Z:\pestpcbsrv\HPCHEM1\ECD_P\methods\PP110822.M
 Quant Title : GC EXTRACTABLES
 QLast Update : Wed Nov 09 05:50:05 2022
 Response via : Initial Calibration
 Integrator: ChemStation

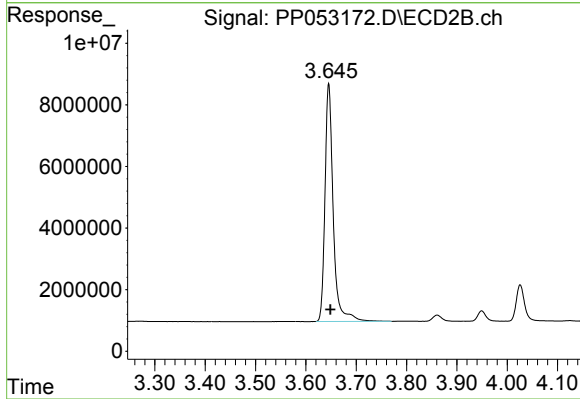
Volume Inj. : 2 µl
 Signal #1 Phase : ZB-MR1 Signal #2 Phase: ZB-MR2
 Signal #1 Info : 30Mx0.32mmx 0.50µ Signal #2 Info : 30M x 0.32mm x 0.25µm



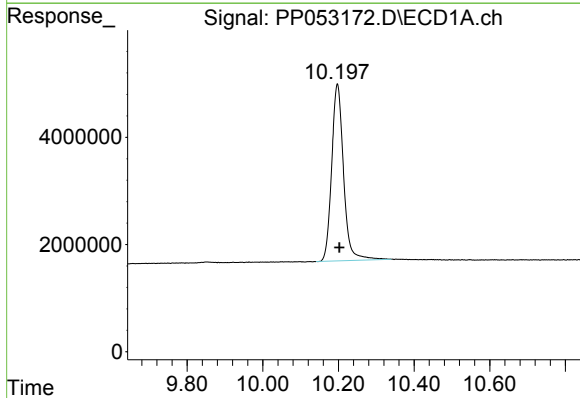


#1 Tetrachloro-m-xylene
 R.T.: 4.400 min
 Delta R.T.: -0.003 min
 Response: 107710090
 Conc: 56.03 ng/ml

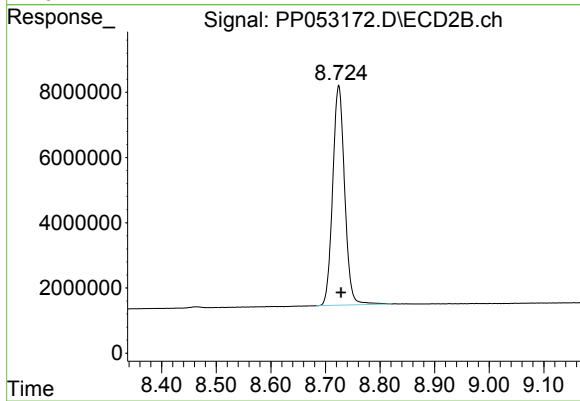
Instrument :
 ECD_P
 ClientSampleId :
 ICVPP110822AR1242



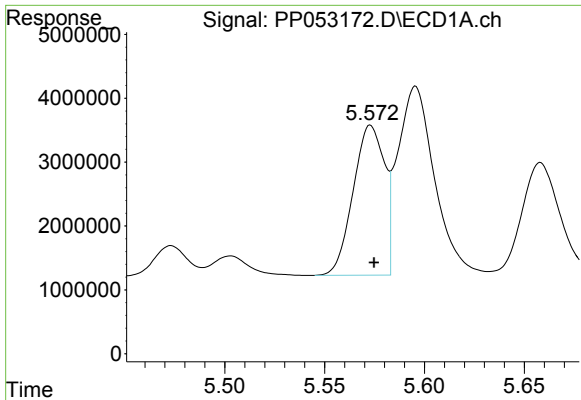
#1 Tetrachloro-m-xylene
 R.T.: 3.646 min
 Delta R.T.: -0.003 min
 Response: 88127601
 Conc: 58.59 ng/ml



#2 Decachlorobiphenyl
 R.T.: 10.197 min
 Delta R.T.: -0.005 min
 Response: 71819641
 Conc: 52.97 ng/ml



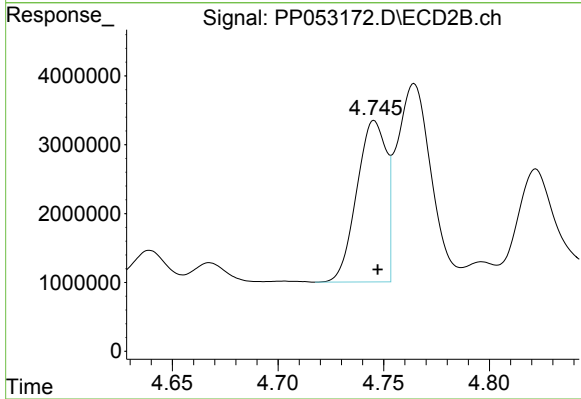
#2 Decachlorobiphenyl
 R.T.: 8.724 min
 Delta R.T.: -0.004 min
 Response: 102523312
 Conc: 54.70 ng/ml



#16 AR-1242-1

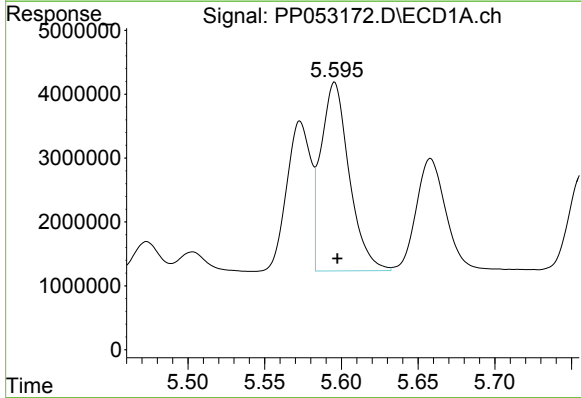
R.T.: 5.573 min
 Delta R.T.: -0.002 min
 Response: 25558980
 Conc: 524.46 ng/ml

Instrument :
 ECD_P
 ClientSampleId :
 ICVPP110822AR1242



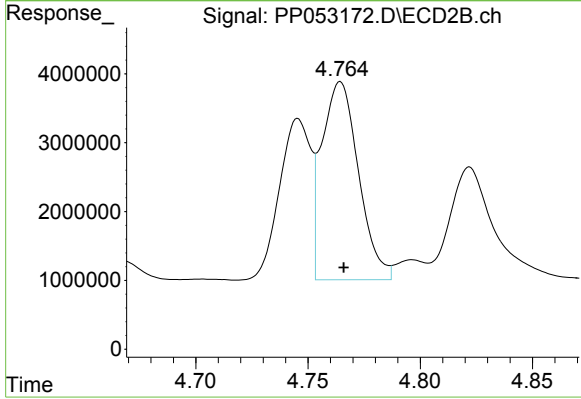
#16 AR-1242-1

R.T.: 4.746 min
 Delta R.T.: -0.001 min
 Response: 22674220
 Conc: 514.28 ng/ml



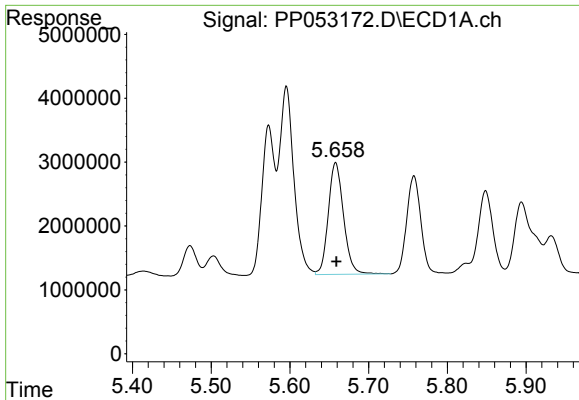
#17 AR-1242-2

R.T.: 5.596 min
 Delta R.T.: -0.002 min
 Response: 37860085
 Conc: 525.14 ng/ml



#17 AR-1242-2

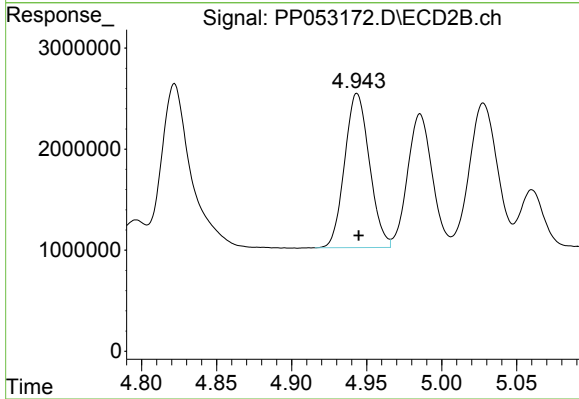
R.T.: 4.764 min
 Delta R.T.: -0.002 min
 Response: 32805327
 Conc: 530.43 ng/ml



#18 AR-1242-3

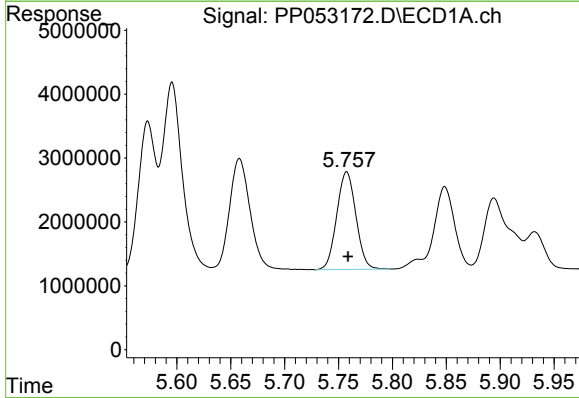
R.T.: 5.658 min
 Delta R.T.: 0.000 min
 Response: 23600626
 Conc: 527.00 ng/ml

Instrument :
 ECD_P
 ClientSampleId :
 ICVPP110822AR1242



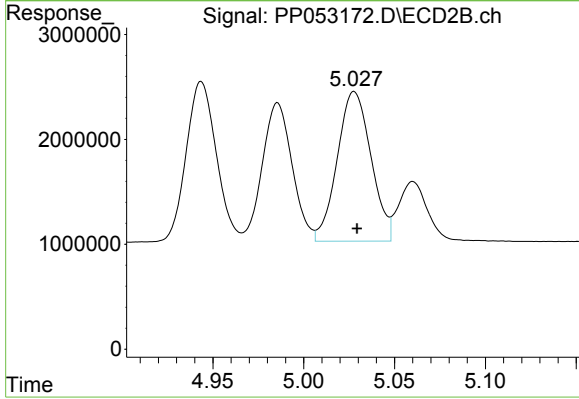
#18 AR-1242-3

R.T.: 4.944 min
 Delta R.T.: 0.000 min
 Response: 17562035
 Conc: 528.80 ng/ml



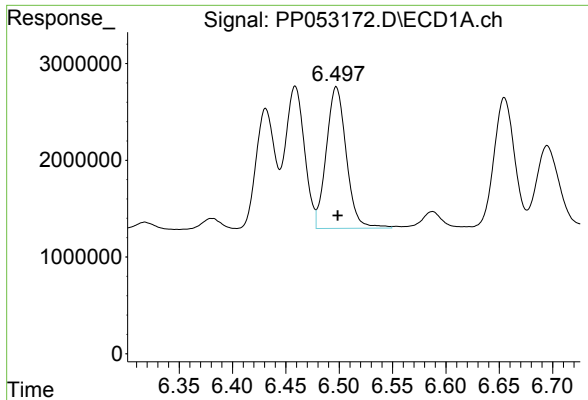
#19 AR-1242-4

R.T.: 5.758 min
 Delta R.T.: -0.001 min
 Response: 18894681
 Conc: 525.39 ng/ml



#19 AR-1242-4

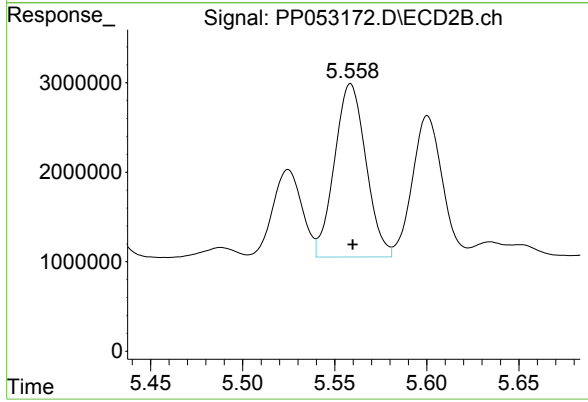
R.T.: 5.028 min
 Delta R.T.: -0.001 min
 Response: 18463325
 Conc: 528.12 ng/ml



#20 AR-1242-5

R.T.: 6.497 min
Delta R.T.: -0.001 min
Response: 19101799
Conc: 523.20 ng/ml

Instrument :
ECD_P
ClientSampleId :
ICVPP110822AR1242



#20 AR-1242-5

R.T.: 5.559 min
Delta R.T.: -0.001 min
Response: 23005929
Conc: 525.36 ng/ml