

Data Path : Z:\pestpcbsrv\HPCHEM1\ECD_P\Data\PP110921\
 Data File : PP040858.D
 Signal(s) : Signal #1: ECD1A.CH Signal #2: ECD2B.CH
 Acq On : 09 Nov 2021 22:56
 Operator : AJ\MA
 Sample : M4548-01 10X
 Misc :
 ALS Vial : 32 Sample Multiplier: 1

Instrument :
 ECD_P
ClientSampleId :
 LAW-2021-1A

Integration File signal 1: autoint1.e
 Integration File signal 2: autoint2.e
 Quant Time: Nov 10 01:25:43 2021
 Quant Method : Z:\pestpcbsrv\HPCHEM1\ECD_P\methods\PP110421.M
 Quant Title : GC EXTRACTABLES
 QLast Update : Thu Nov 04 11:28:51 2021
 Response via : Initial Calibration
 Integrator: ChemStation 6890 Scale Mode: Small noise peaks clipped

Volume Inj. : 2 µl
 Signal #1 Phase : ZB-MR1 Signal #2 Phase: ZB-MR2
 Signal #1 Info : 30Mx0.32mmx 0.50µ Signal #2 Info : 30M x 0.32mm x 0.25µm

Compound	RT#1	RT#2	Resp#1	Resp#2	ng/ml	ng/ml

System Monitoring Compounds						
1) SA Tetrachlo...	4.762	3.765	30756	47771	1.518	1.991 #
2) SA Decachlor...	10.670	9.034	33790	28757	1.587	1.647

Target Compounds

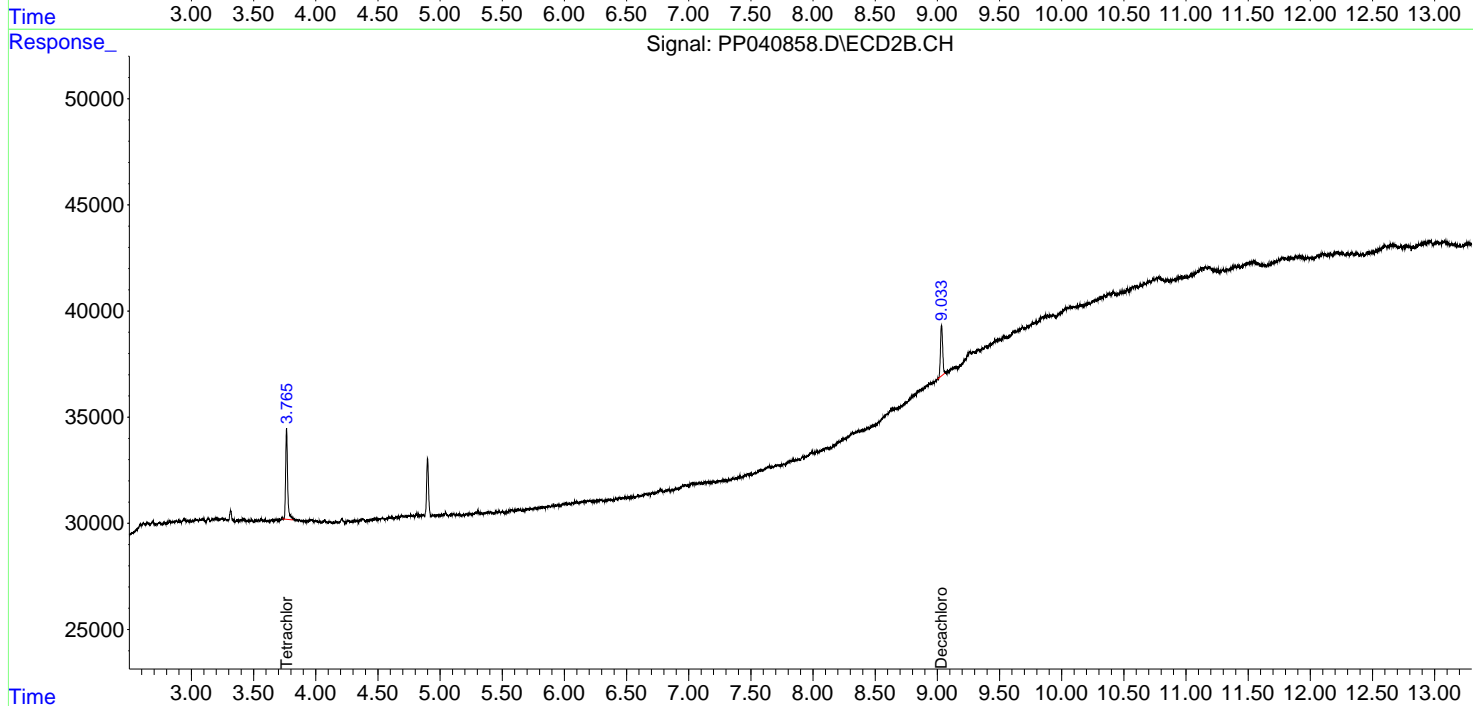
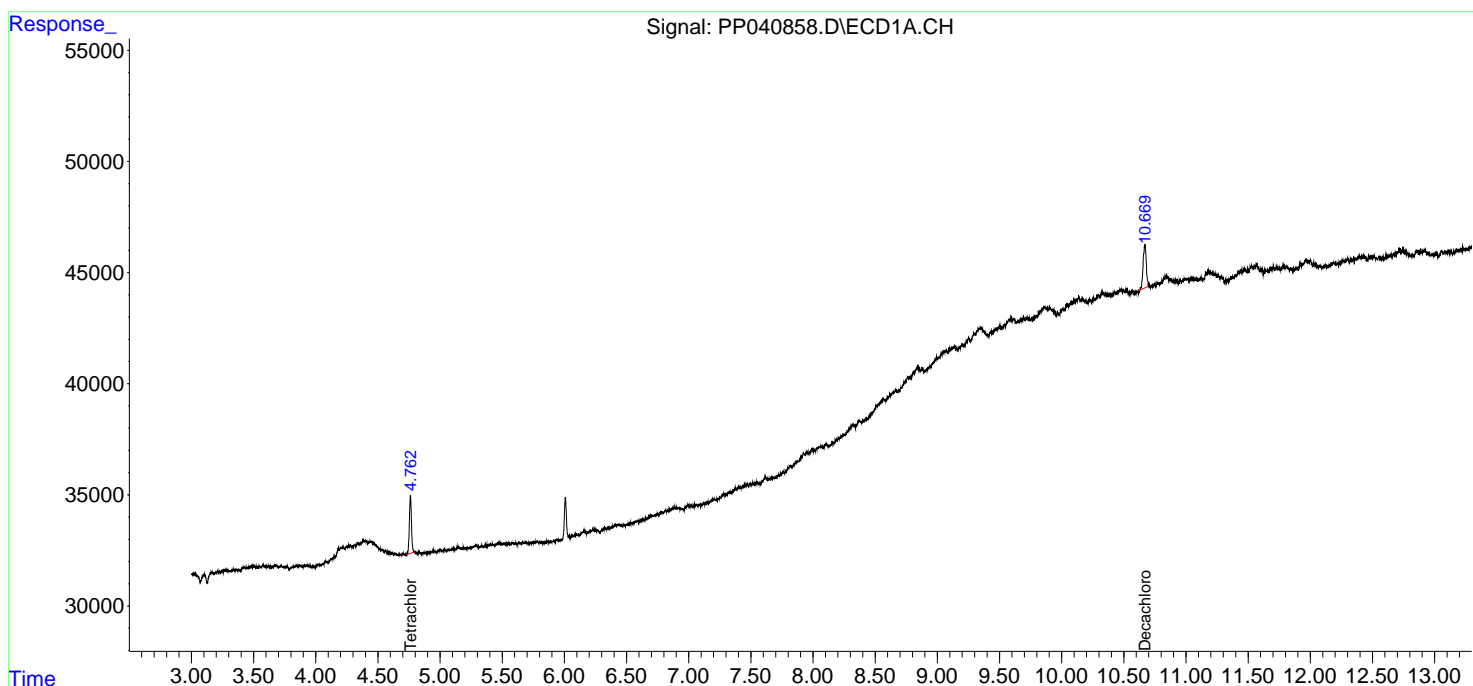
(f)=RT Delta > 1/2 Window (#)=Amounts differ by > 25% (m)=manual int.

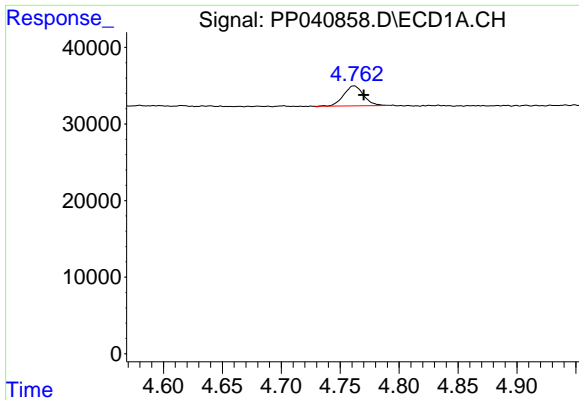
Data Path : Z:\pestpcbsrv\HPCHEM1\ECD_P\Data\PP110921\
 Data File : PP040858.D
 Signal(s) : Signal #1: ECD1A.CH Signal #2: ECD2B.CH
 Acq On : 09 Nov 2021 22:56
 Operator : AJ\MA
 Sample : M4548-01 10X
 Misc :
 ALS Vial : 32 Sample Multiplier: 1

Instrument :
 ECD_P
 ClientSampleId :
 LAW-2021-1A

Integration File signal 1: autoint1.e
 Integration File signal 2: autoint2.e
 Quant Time: Nov 10 01:25:43 2021
 Quant Method : Z:\pestpcbsrv\HPCHEM1\ECD_P\methods\PP110421.M
 Quant Title : GC EXTRACTABLES
 QLast Update : Thu Nov 04 11:28:51 2021
 Response via : Initial Calibration
 Integrator: ChemStation 6890 Scale Mode: Small noise peaks clipped

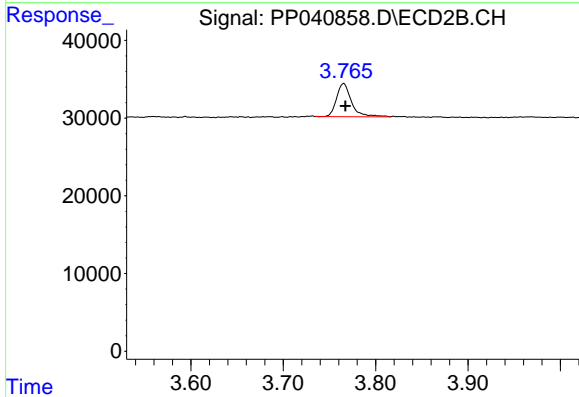
Volume Inj. : 2 µl
 Signal #1 Phase : ZB-MR1 Signal #2 Phase: ZB-MR2
 Signal #1 Info : 30Mx0.32mmx 0.50µ Signal #2 Info : 30M x 0.32mm x 0.25µm



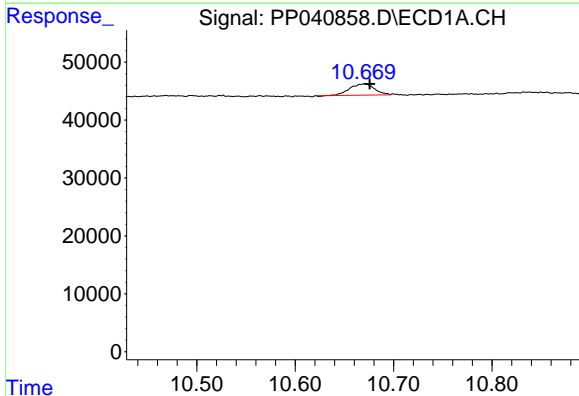


#1 Tetrachloro-m-xylene
 R.T.: 4.762 min
 Delta R.T.: -0.008 min
 Response: 30756
 Conc: 1.52 ng/ml

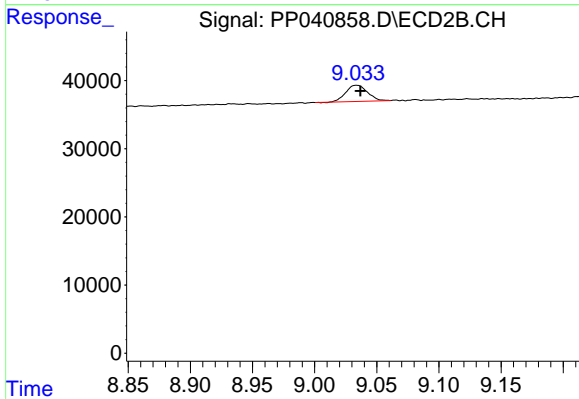
Instrument :
 ECD_P
 ClientSampleId :
 LAW-2021-1A



#1 Tetrachloro-m-xylene
 R.T.: 3.765 min
 Delta R.T.: -0.002 min
 Response: 47771
 Conc: 1.99 ng/ml



#2 Decachlorobiphenyl
 R.T.: 10.670 min
 Delta R.T.: -0.006 min
 Response: 33790
 Conc: 1.59 ng/ml



#2 Decachlorobiphenyl
 R.T.: 9.034 min
 Delta R.T.: -0.003 min
 Response: 28757
 Conc: 1.65 ng/ml