

Data Path : Z:\pestpcbsrv\HPCHEM1\ECD_P\Data\PP111121\
 Data File : PP041000.D
 Signal(s) : Signal #1: ECD1A.CH Signal #2: ECD2B.CH
 Acq On : 11 Nov 2021 20:10
 Operator : AJ\MA
 Sample : AR1254CCC500
 Misc :
 ALS Vial : 6 Sample Multiplier: 1

Instrument :
 ECD_P
 ClientSampleId :

Integration File signal 1: autoint1.e
 Integration File signal 2: autoint2.e
 Quant Time: Nov 12 00:51:01 2021
 Quant Method : Z:\pestpcbsrv\HPCHEM1\ECD_P\methods\PP110421.M
 Quant Title : GC EXTRACTABLES
 QLast Update : Thu Nov 04 11:28:51 2021
 Response via : Initial Calibration
 Integrator: ChemStation 6890 Scale Mode: Small noise peaks clipped

Volume Inj. : 2 µl
 Signal #1 Phase : ZB-MR1 Signal #2 Phase: ZB-MR2
 Signal #1 Info : 30Mx0.32mmx 0.50µ Signal #2 Info : 30M x 0.32mm x 0.25µm

Compound	RT#1	RT#2	Resp#1	Resp#2	ng/ml	ng/ml
System Monitoring Compounds						
1) SA Tetrachlo...	4.761	3.764	1090519	1442360	53.830	60.103
2) SA Decachlor...	10.662	9.028	956456	697281	44.910	39.929
Target Compounds						
3) L1 AR-1016-1	6.103f	5.011	12695	12044	18.081	17.230
4) L1 AR-1016-2	6.103	5.031	12695	8716	11.903	8.473 #
6) L1 AR-1016-4	0.000	5.275	0	258228	N.D.	568.557 #
7) L1 AR-1016-5	6.584	5.502	128488	144781	236.759	258.891
9) L2 AR-1221-2	5.146	4.113	12264	19984	81.256	94.989
10) L2 AR-1221-3	0.000	4.206	0	22479	N.D.	34.244 #
11) L3 AR-1232-1	0.000	4.206	0	22479	N.D.	41.650 #
12) L3 AR-1232-2	0.000	5.031	0	8716	N.D.	20.492 #
13) L3 AR-1232-3	6.103f	0.000	12695	0	29.546	N.D. #
14) L3 AR-1232-4	0.000	5.317	0	80228	N.D.	404.319 #
15) L3 AR-1232-5	6.369f	5.502	212700	144781	1486.841	683.169 #
16) L4 AR-1242-1	6.103f	5.011	12695	12044	23.807	22.337
17) L4 AR-1242-2	6.103	5.031	12695	8716	15.702	10.987 #
19) L4 AR-1242-4	0.000	5.317	0	80228	N.D.	194.011 #
20) L4 AR-1242-5	7.054	5.881	113238	548552	247.581	1190.991 #
21) L5 AR-1248-1	6.103f	5.011	12695	12044	32.320	30.275
22) L5 AR-1248-2	6.369	5.275	212700	258228	376.162	445.143
23) L5 AR-1248-3	6.584	5.317	128488	80228	183.236	133.011 #
24) L5 AR-1248-4	7.013	5.502	194296	144781	245.964	210.581
25) L5 AR-1248-5	7.054	5.923	113238	73332	145.014	116.102
26) L6 AR-1254-1	6.982	5.881	385022	548552	498.720	563.932
27) L6 AR-1254-2	7.211	6.041	586279	464071	472.301	552.957
28) L6 AR-1254-3	7.592	6.460	621932	678292	461.961	537.082
29) L6 AR-1254-4	7.887	6.700	468675	401366	480.351	539.435
30) L6 AR-1254-5	8.314	7.129	488133	541202	449.919	503.974
31) L7 AR-1260-1	7.758	6.598	236758	339739	243.813	391.538 #
32) L7 AR-1260-2	8.023	6.795	289255	265246	249.848	263.603
33) L7 AR-1260-3	8.376f	6.947	56967	263599	64.516	279.268 #
34) L7 AR-1260-4	8.608f	7.431	202464	25420	191.620	32.377 #
35) L7 AR-1260-5	8.932	7.681	66456	46014	31.828	25.901
36) L8 AR-1262-1	8.376	7.129	56967	541202	45.463	939.147 #
37) L8 AR-1262-2	8.905	7.681	17125	46014	7.536	25.842 #
39) L8 AR-1262-4	9.297	8.027	16838	56445	28.715	40.274 #
41) L9 AR-1268-1	9.251f	0.000	64521	0	23.669	N.D. #
42) L9 AR-1268-2	9.297f	8.027	16838	56445	6.432	28.318 #

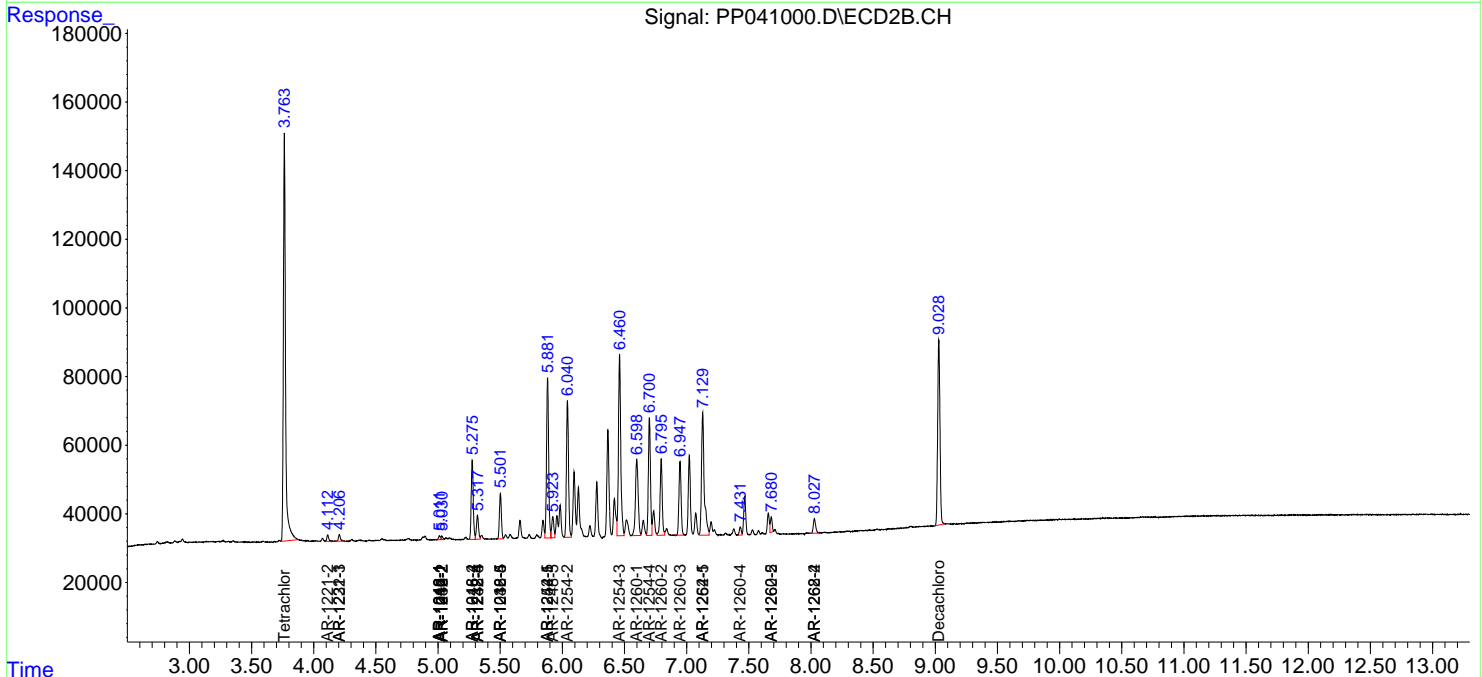
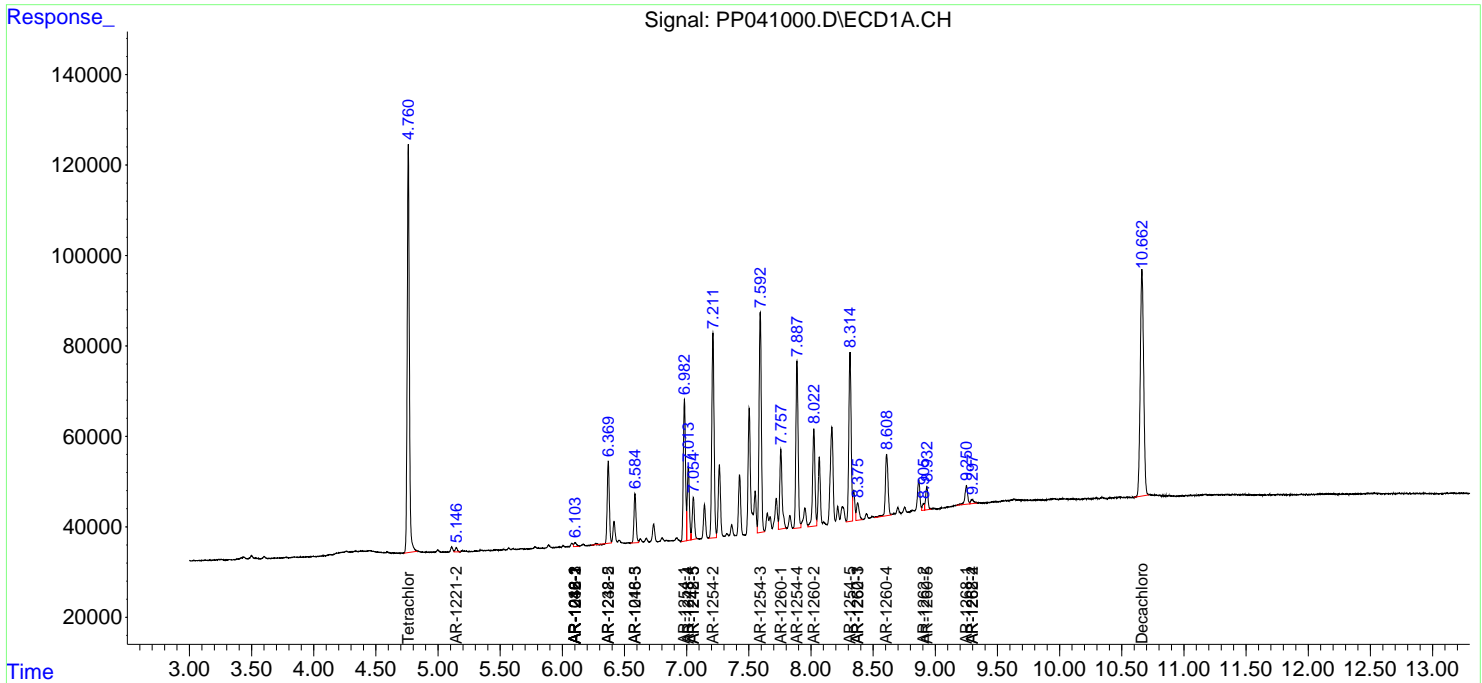
(f)=RT Delta > 1/2 Window (#)=Amounts differ by > 25% (m)=manual int.

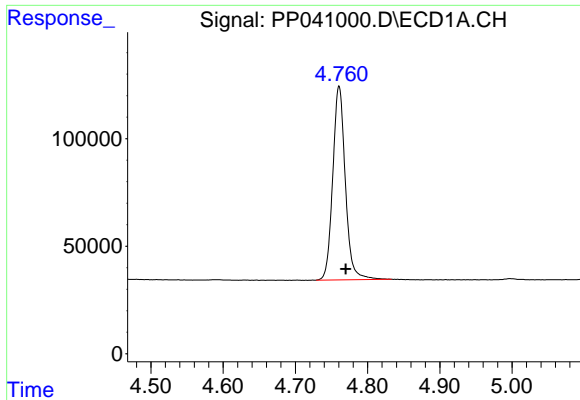
Data Path : Z:\pestpcbsrv\HPCHEM1\ECD_P\Data\PP111121\
 Data File : PP041000.D
 Signal(s) : Signal #1: ECD1A.CH Signal #2: ECD2B.CH
 Acq On : 11 Nov 2021 20:10
 Operator : AJ\MA
 Sample : AR1254CCC500
 Misc :
 ALS Vial : 6 Sample Multiplier: 1

Instrument :
 ECD_P
 ClientSampleId :

Integration File signal 1: autoint1.e
 Integration File signal 2: autoint2.e
 Quant Time: Nov 12 00:51:01 2021
 Quant Method : Z:\pestpcbsrv\HPCHEM1\ECD_P\methods\PP110421.M
 Quant Title : GC EXTRACTABLES
 QLast Update : Thu Nov 04 11:28:51 2021
 Response via : Initial Calibration
 Integrator: ChemStation 6890 Scale Mode: Small noise peaks clipped

Volume Inj. : 2 µl
 Signal #1 Phase : ZB-MR1 Signal #2 Phase: ZB-MR2
 Signal #1 Info : 30Mx0.32mmx 0.50µ Signal #2 Info : 30M x 0.32mm x 0.25µm

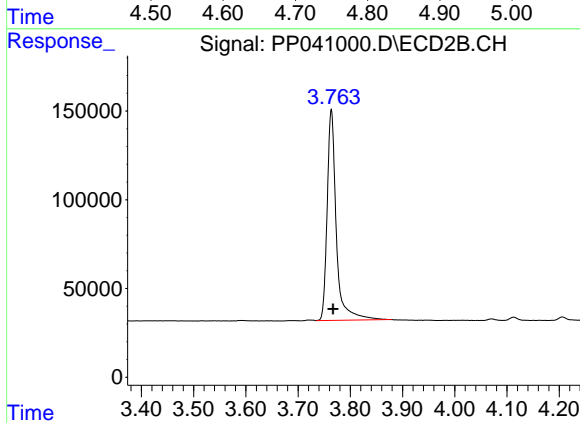




#1 Tetrachloro-m-xylene

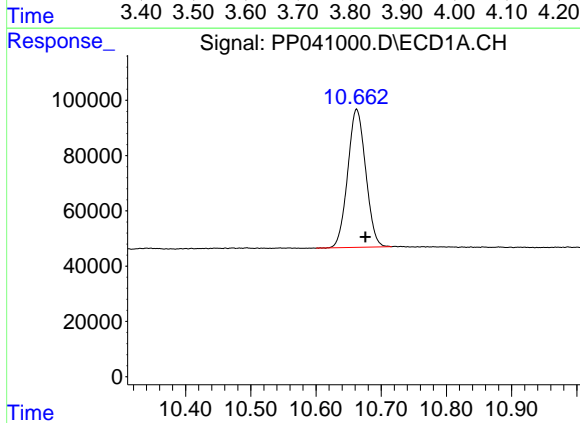
R.T.: 4.761 min
 Delta R.T.: -0.009 min
 Response: 1090519
 Conc: 53.83 ng/ml

Instrument :
 ECD_P
 ClientSampleId :



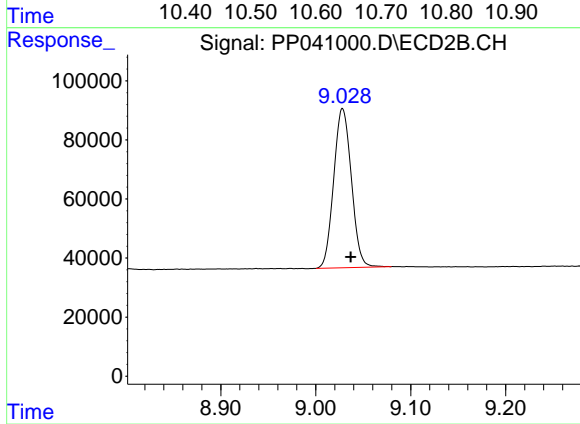
#1 Tetrachloro-m-xylene

R.T.: 3.764 min
 Delta R.T.: -0.003 min
 Response: 1442360
 Conc: 60.10 ng/ml



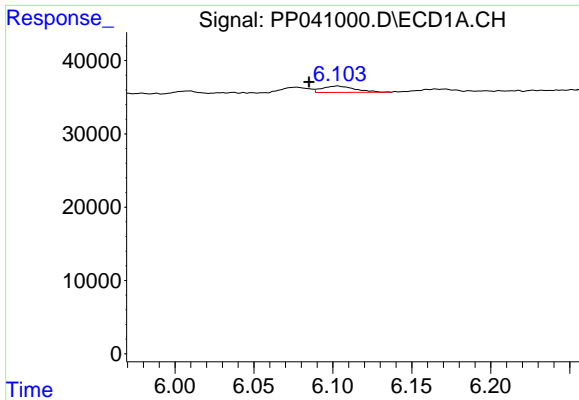
#2 Decachlorobiphenyl

R.T.: 10.662 min
 Delta R.T.: -0.014 min
 Response: 956456
 Conc: 44.91 ng/ml



#2 Decachlorobiphenyl

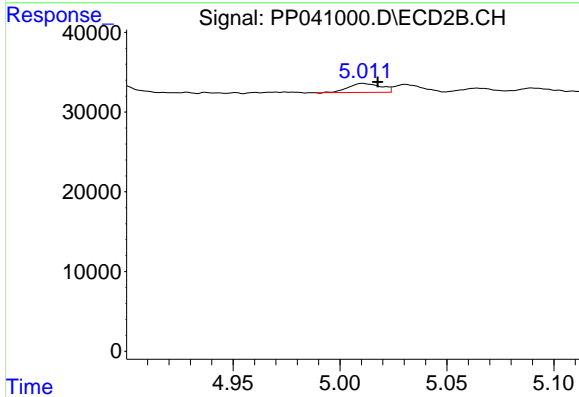
R.T.: 9.028 min
 Delta R.T.: -0.009 min
 Response: 697281
 Conc: 39.93 ng/ml



#3 AR-1016-1

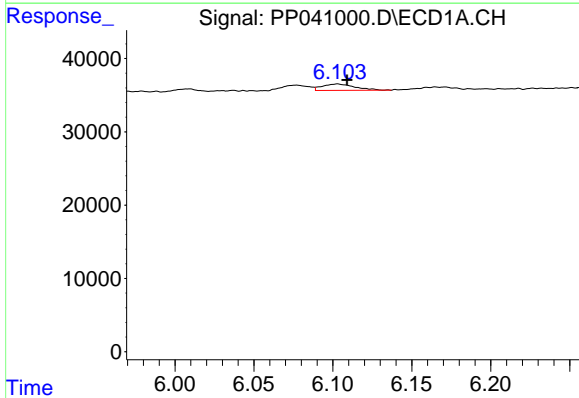
R.T.: 6.103 min
 Delta R.T.: 0.018 min
 Response: 12695
 Conc: 18.08 ng/ml

Instrument :
 ECD_P
 ClientSampleId :



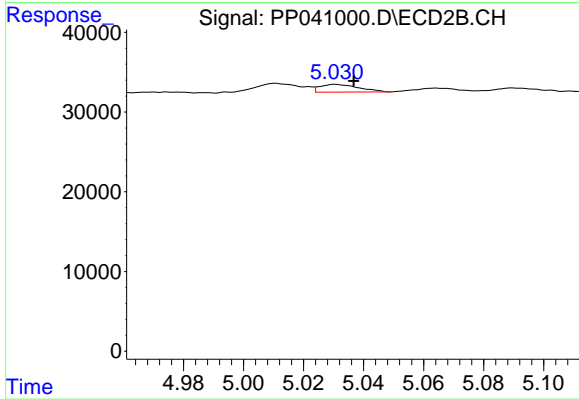
#3 AR-1016-1

R.T.: 5.011 min
 Delta R.T.: -0.007 min
 Response: 12044
 Conc: 17.23 ng/ml



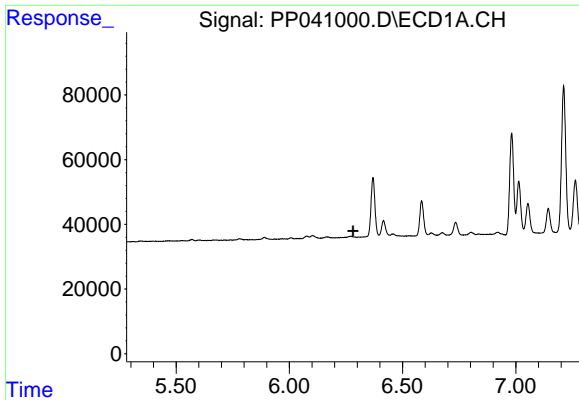
#4 AR-1016-2

R.T.: 6.103 min
 Delta R.T.: -0.006 min
 Response: 12695
 Conc: 11.90 ng/ml



#4 AR-1016-2

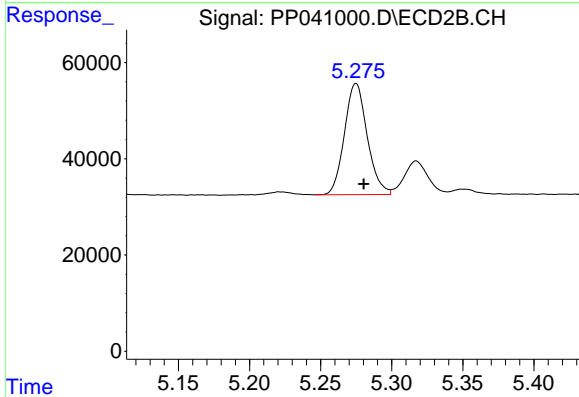
R.T.: 5.031 min
 Delta R.T.: -0.006 min
 Response: 8716
 Conc: 8.47 ng/ml



#6 AR-1016-4

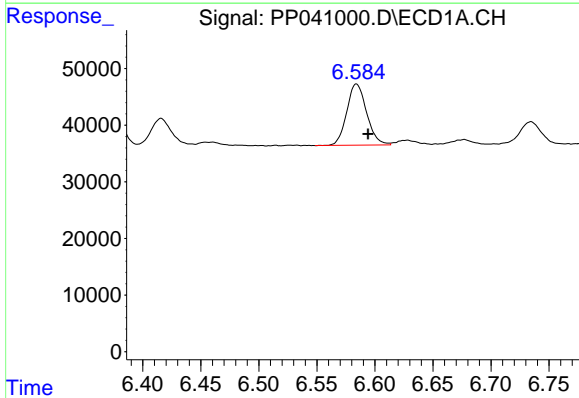
R.T.: 0.000 min
 Exp R.T.: 6.281 min
 Response: 0
 Conc: N.D.

Instrument :
 ECD_P
 ClientSampleId :



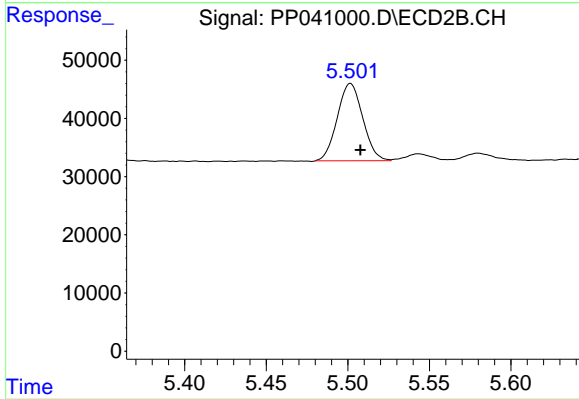
#6 AR-1016-4

R.T.: 5.275 min
 Delta R.T.: -0.005 min
 Response: 258228
 Conc: 568.56 ng/ml



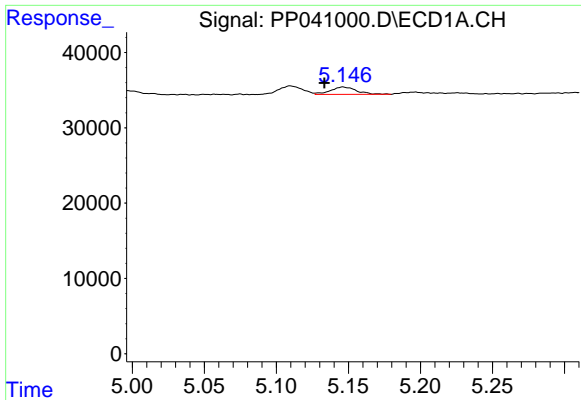
#7 AR-1016-5

R.T.: 6.584 min
 Delta R.T.: -0.010 min
 Response: 128488
 Conc: 236.76 ng/ml



#7 AR-1016-5

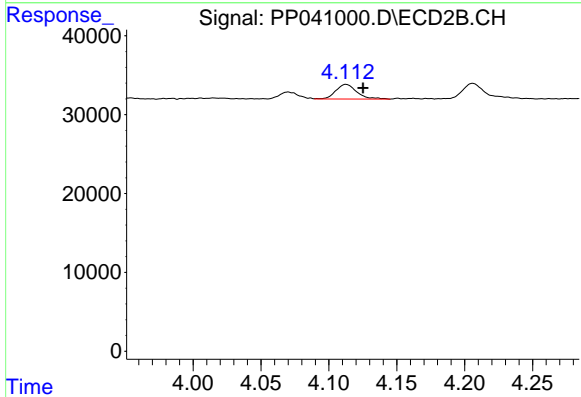
R.T.: 5.502 min
 Delta R.T.: -0.006 min
 Response: 144781
 Conc: 258.89 ng/ml



#9 AR-1221-2

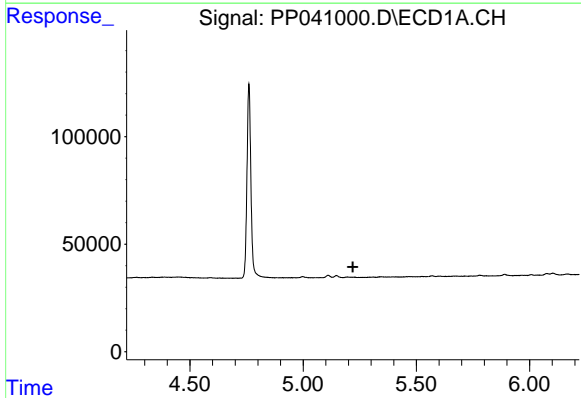
R.T.: 5.146 min
 Delta R.T.: 0.013 min
 Response: 12264
 Conc: 81.26 ng/ml

Instrument :
 ECD_P
 ClientSampleId :



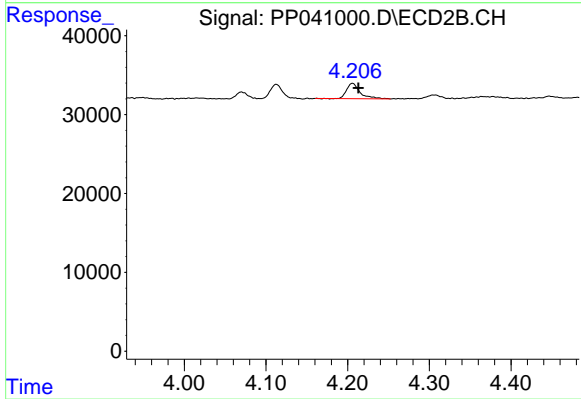
#9 AR-1221-2

R.T.: 4.113 min
 Delta R.T.: -0.013 min
 Response: 19984
 Conc: 94.99 ng/ml



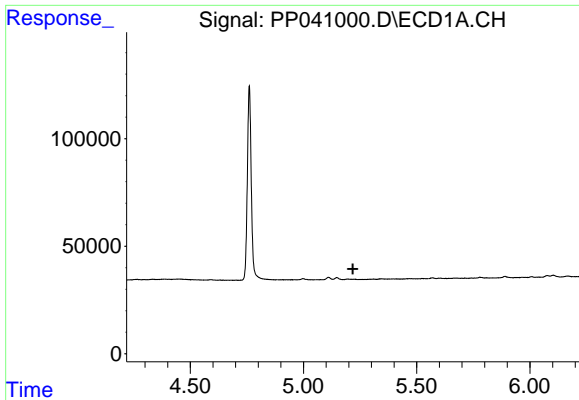
#10 AR-1221-3

R.T.: 0.000 min
 Exp R.T. : 5.220 min
 Response: 0
 Conc: N.D.



#10 AR-1221-3

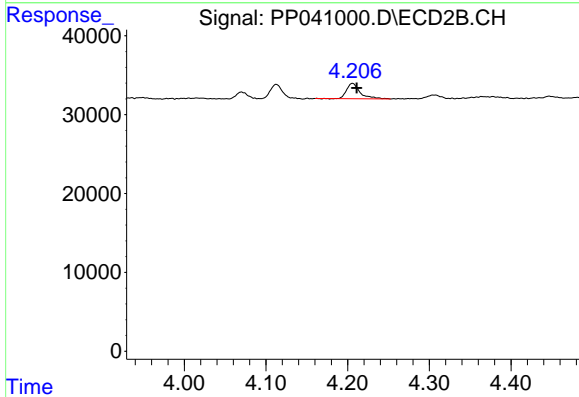
R.T.: 4.206 min
 Delta R.T.: -0.007 min
 Response: 22479
 Conc: 34.24 ng/ml



#11 AR-1232-1

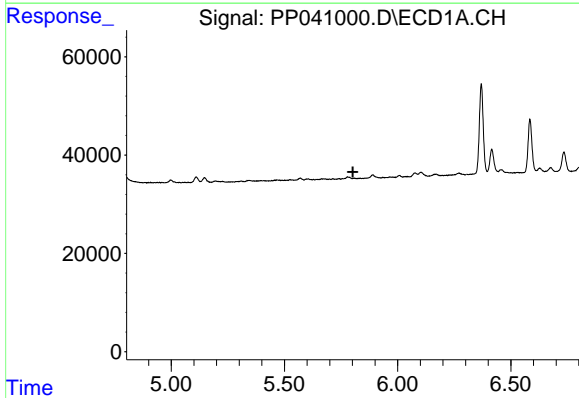
R.T.: 0.000 min
 Exp R.T.: 5.218 min
 Response: 0
 Conc: N.D.

Instrument :
 ECD_P
 ClientSampleId :



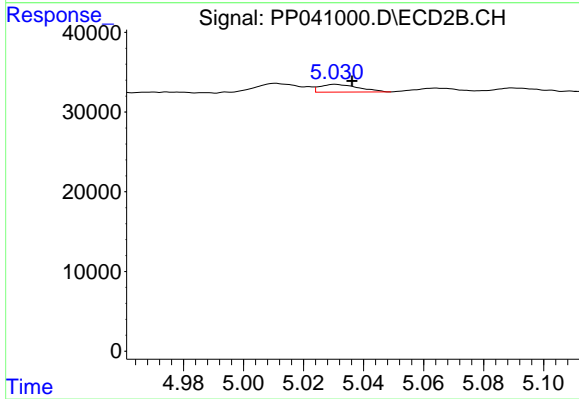
#11 AR-1232-1

R.T.: 4.206 min
 Delta R.T.: -0.005 min
 Response: 22479
 Conc: 41.65 ng/ml



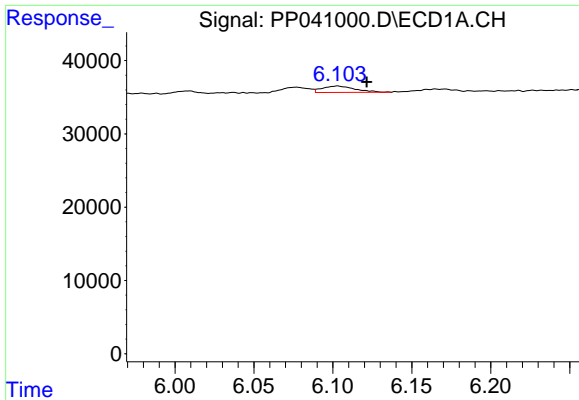
#12 AR-1232-2

R.T.: 0.000 min
 Exp R.T.: 5.802 min
 Response: 0
 Conc: N.D.



#12 AR-1232-2

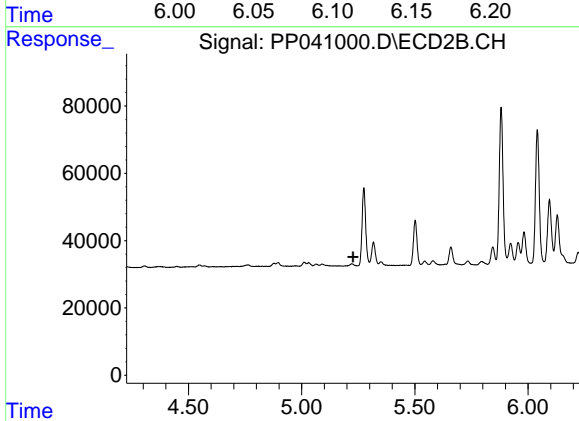
R.T.: 5.031 min
 Delta R.T.: -0.006 min
 Response: 8716
 Conc: 20.49 ng/ml



#13 AR-1232-3

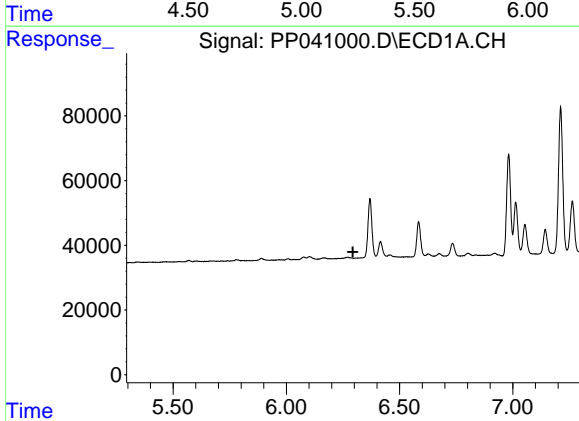
R.T.: 6.103 min
 Delta R.T.: -0.018 min
 Response: 12695
 Conc: 29.55 ng/ml

Instrument :
 ECD_P
 ClientSampleId :



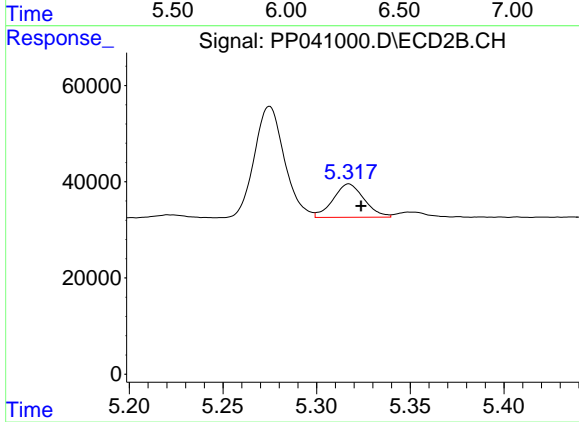
#13 AR-1232-3

R.T.: 0.000 min
 Exp R.T. : 5.227 min
 Response: 0
 Conc: N.D.



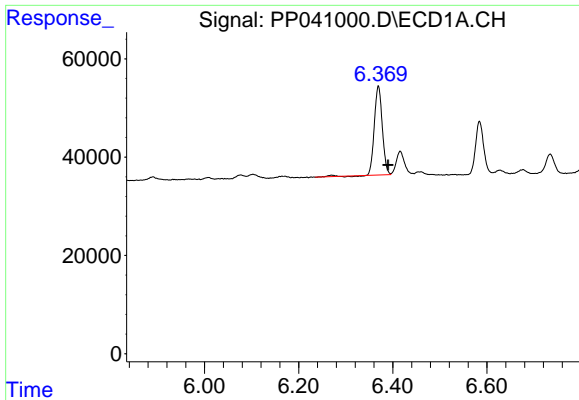
#14 AR-1232-4

R.T.: 0.000 min
 Exp R.T. : 6.294 min
 Response: 0
 Conc: N.D.



#14 AR-1232-4

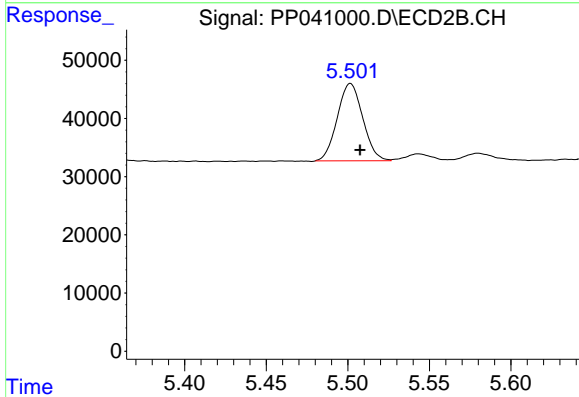
R.T.: 5.317 min
 Delta R.T.: -0.007 min
 Response: 80228
 Conc: 404.32 ng/ml



#15 AR-1232-5

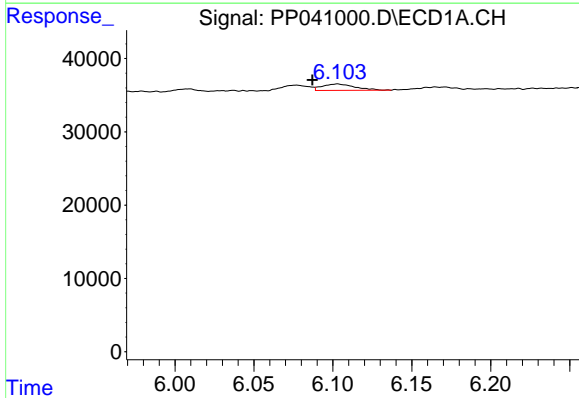
R.T.: 6.369 min
 Delta R.T.: -0.021 min
 Response: 212700
 Conc: 1486.84 ng/ml

Instrument :
 ECD_P
 ClientSampleId :



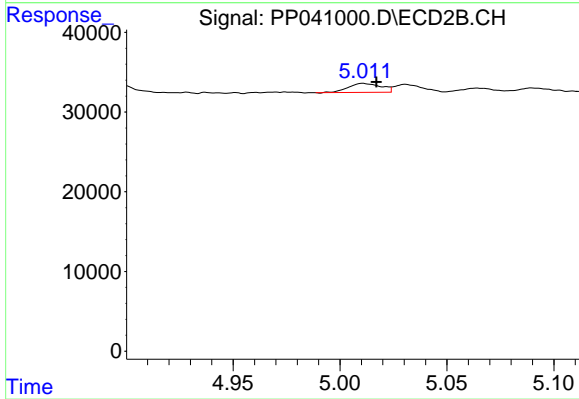
#15 AR-1232-5

R.T.: 5.502 min
 Delta R.T.: -0.006 min
 Response: 144781
 Conc: 683.17 ng/ml



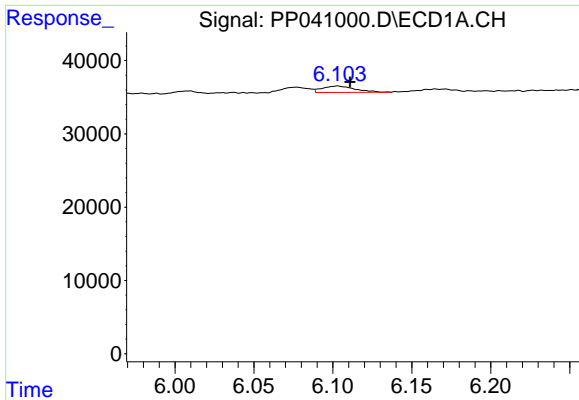
#16 AR-1242-1

R.T.: 6.103 min
 Delta R.T.: 0.016 min
 Response: 12695
 Conc: 23.81 ng/ml



#16 AR-1242-1

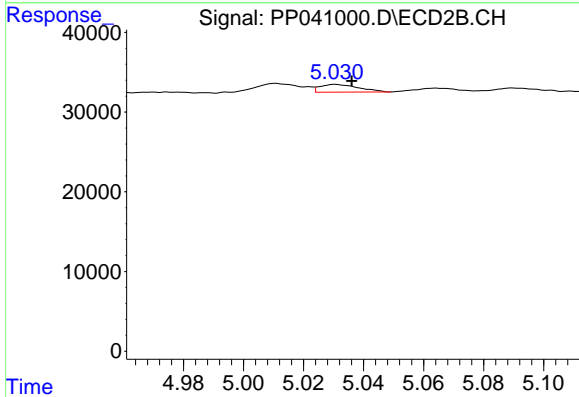
R.T.: 5.011 min
 Delta R.T.: -0.006 min
 Response: 12044
 Conc: 22.34 ng/ml



#17 AR-1242-2

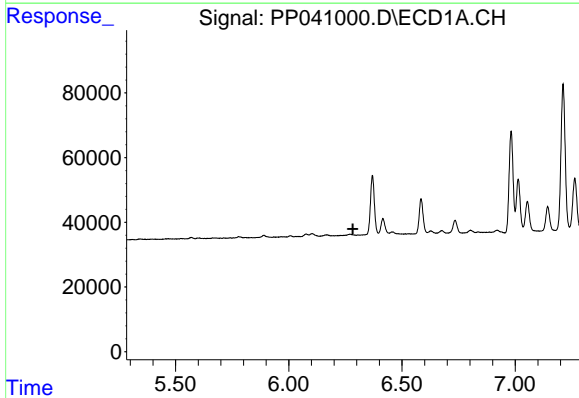
R.T.: 6.103 min
 Delta R.T.: -0.008 min
 Response: 12695
 Conc: 15.70 ng/ml

Instrument :
 ECD_P
 ClientSampleId :



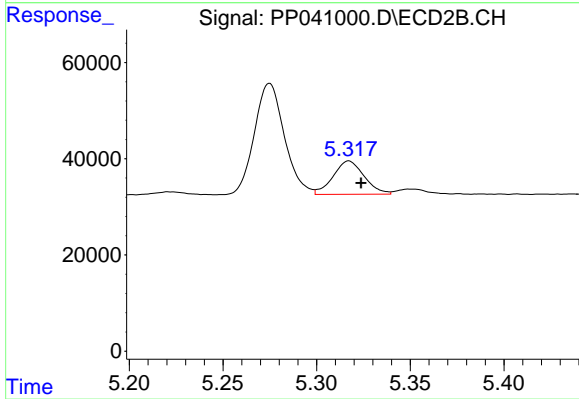
#17 AR-1242-2

R.T.: 5.031 min
 Delta R.T.: -0.005 min
 Response: 8716
 Conc: 10.99 ng/ml



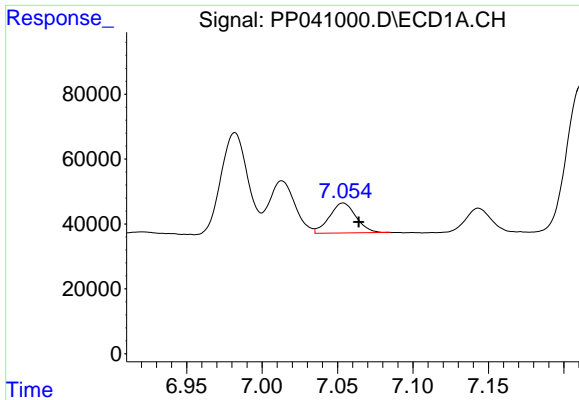
#19 AR-1242-4

R.T.: 0.000 min
 Exp R.T. : 6.283 min
 Response: 0
 Conc: N.D.



#19 AR-1242-4

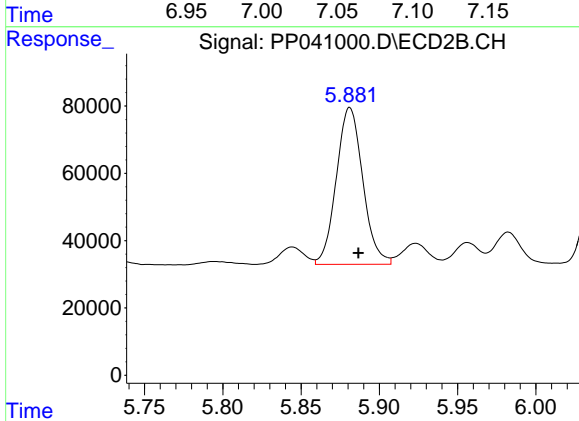
R.T.: 5.317 min
 Delta R.T.: -0.007 min
 Response: 80228
 Conc: 194.01 ng/ml



#20 AR-1242-5

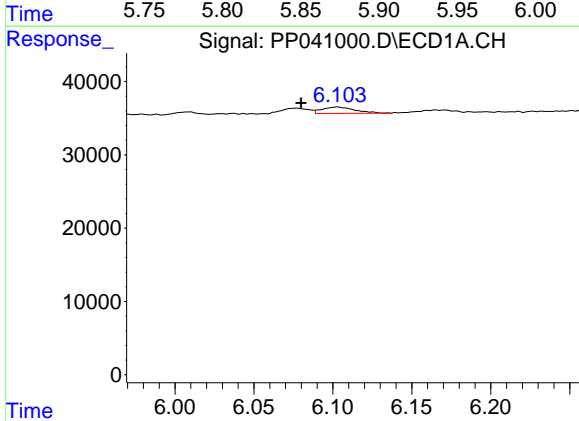
R.T.: 7.054 min
 Delta R.T.: -0.010 min
 Response: 113238
 Conc: 247.58 ng/ml

Instrument :
 ECD_P
 ClientSampleId :



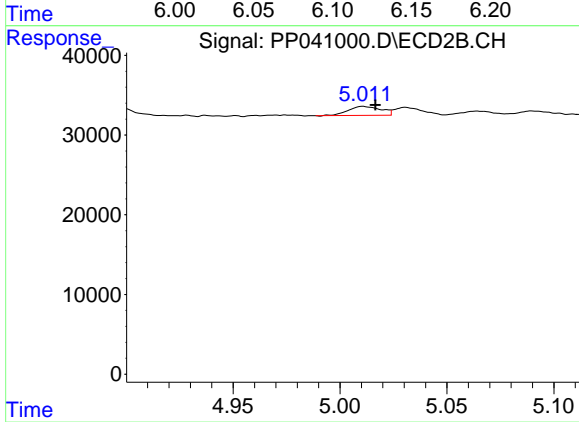
#20 AR-1242-5

R.T.: 5.881 min
 Delta R.T.: -0.005 min
 Response: 548552
 Conc: 1190.99 ng/ml



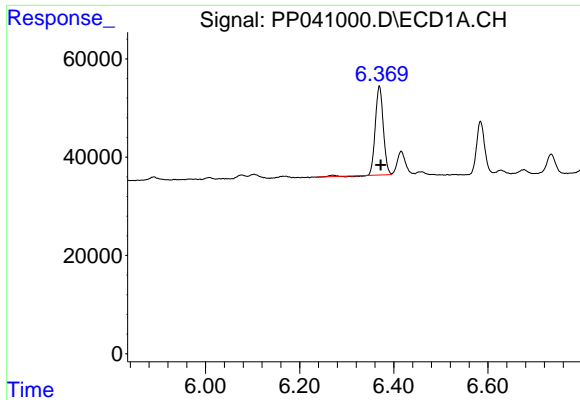
#21 AR-1248-1

R.T.: 6.103 min
 Delta R.T.: 0.023 min
 Response: 12695
 Conc: 32.32 ng/ml



#21 AR-1248-1

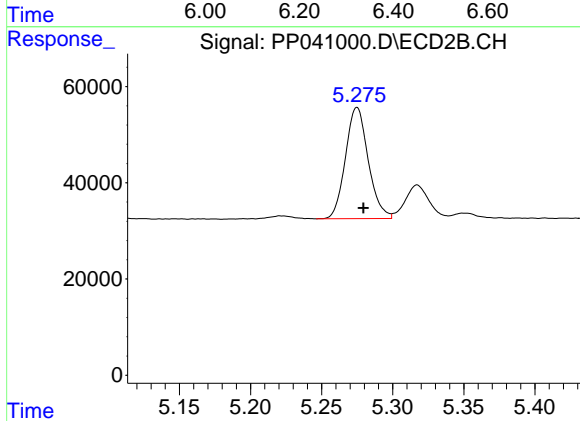
R.T.: 5.011 min
 Delta R.T.: -0.006 min
 Response: 12044
 Conc: 30.28 ng/ml



#22 AR-1248-2

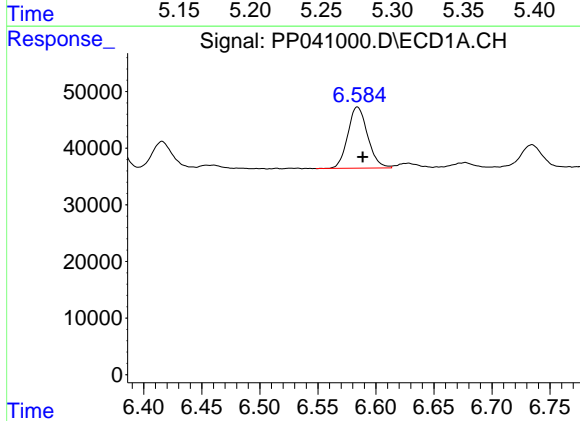
R.T.: 6.369 min
 Delta R.T.: -0.003 min
 Response: 212700
 Conc: 376.16 ng/ml

Instrument :
 ECD_P
 ClientSampleId :



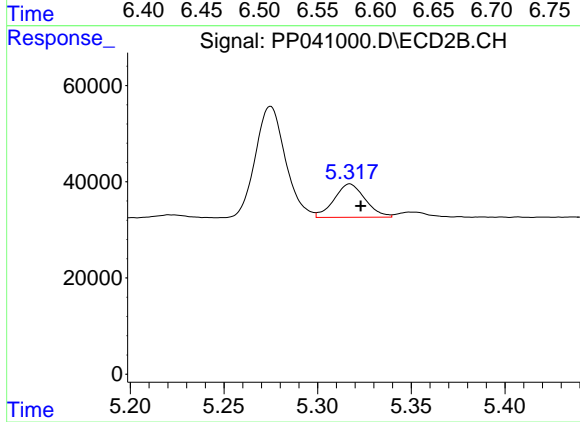
#22 AR-1248-2

R.T.: 5.275 min
 Delta R.T.: -0.004 min
 Response: 258228
 Conc: 445.14 ng/ml



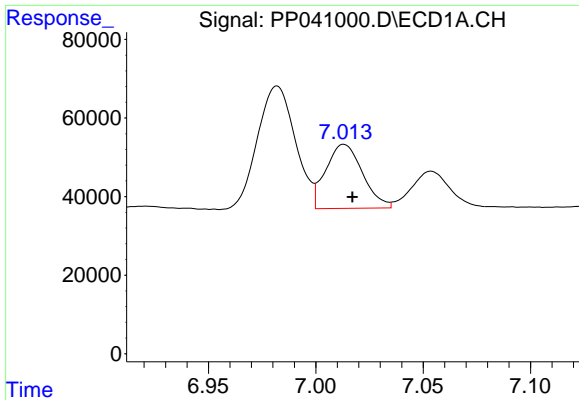
#23 AR-1248-3

R.T.: 6.584 min
 Delta R.T.: -0.005 min
 Response: 128488
 Conc: 183.24 ng/ml



#23 AR-1248-3

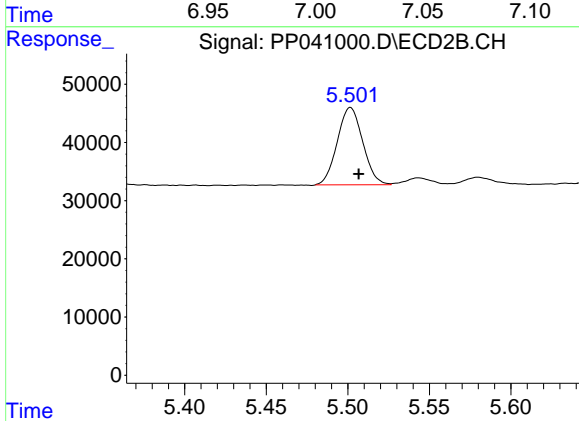
R.T.: 5.317 min
 Delta R.T.: -0.006 min
 Response: 80228
 Conc: 133.01 ng/ml



#24 AR-1248-4

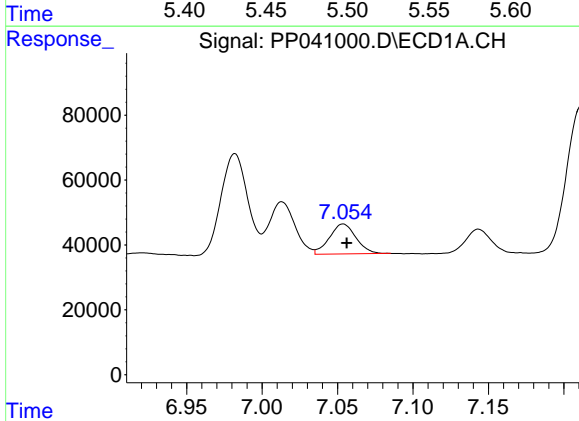
R.T.: 7.013 min
 Delta R.T.: -0.004 min
 Response: 194296
 Conc: 245.96 ng/ml

Instrument :
 ECD_P
 ClientSampleId :



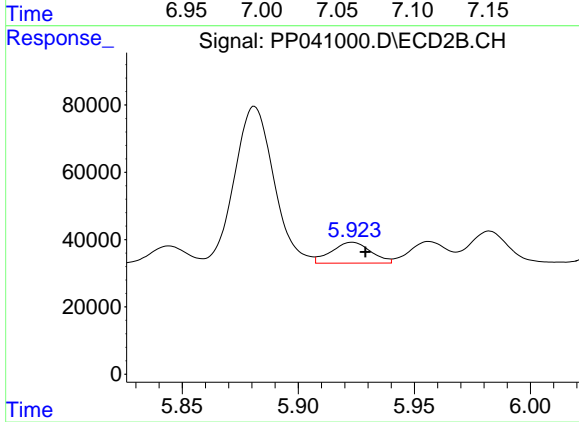
#24 AR-1248-4

R.T.: 5.502 min
 Delta R.T.: -0.005 min
 Response: 144781
 Conc: 210.58 ng/ml



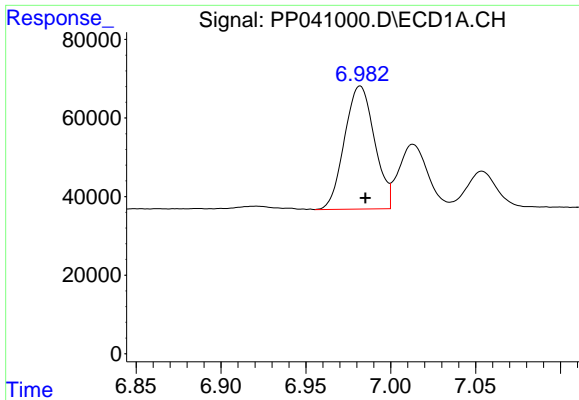
#25 AR-1248-5

R.T.: 7.054 min
 Delta R.T.: -0.002 min
 Response: 113238
 Conc: 145.01 ng/ml



#25 AR-1248-5

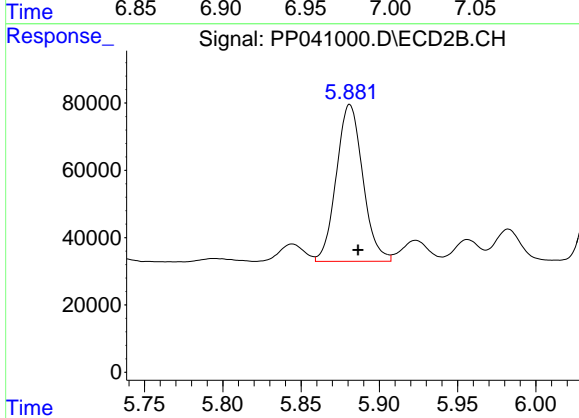
R.T.: 5.923 min
 Delta R.T.: -0.006 min
 Response: 73332
 Conc: 116.10 ng/ml



#26 AR-1254-1

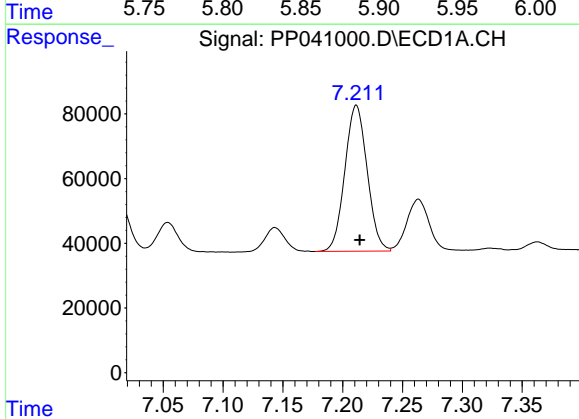
R.T.: 6.982 min
 Delta R.T.: -0.003 min
 Response: 385022
 Conc: 498.72 ng/ml

Instrument :
 ECD_P
 ClientSampleId :



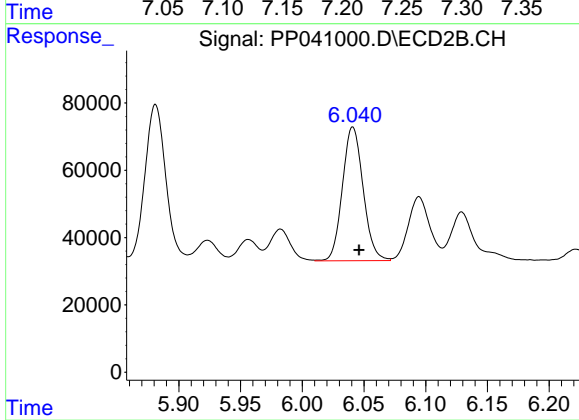
#26 AR-1254-1

R.T.: 5.881 min
 Delta R.T.: -0.005 min
 Response: 548552
 Conc: 563.93 ng/ml



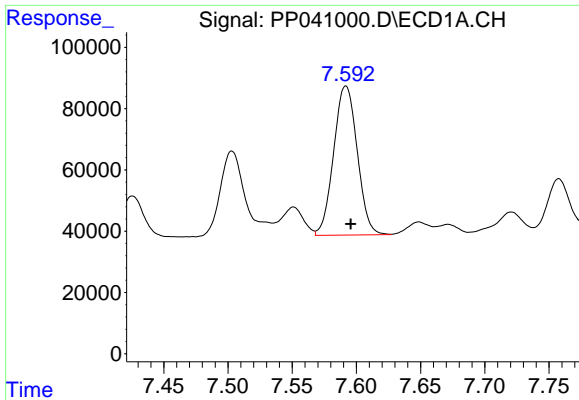
#27 AR-1254-2

R.T.: 7.211 min
 Delta R.T.: -0.003 min
 Response: 586279
 Conc: 472.30 ng/ml



#27 AR-1254-2

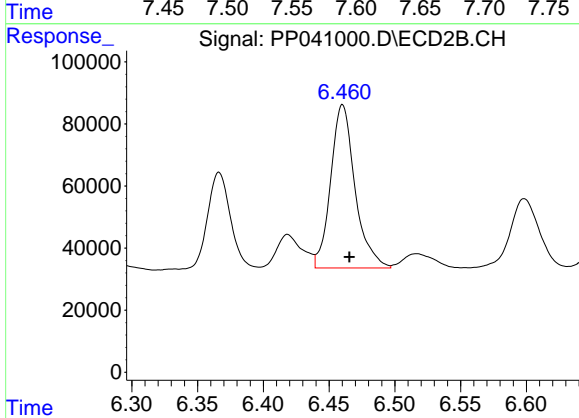
R.T.: 6.041 min
 Delta R.T.: -0.005 min
 Response: 464071
 Conc: 552.96 ng/ml



#28 AR-1254-3

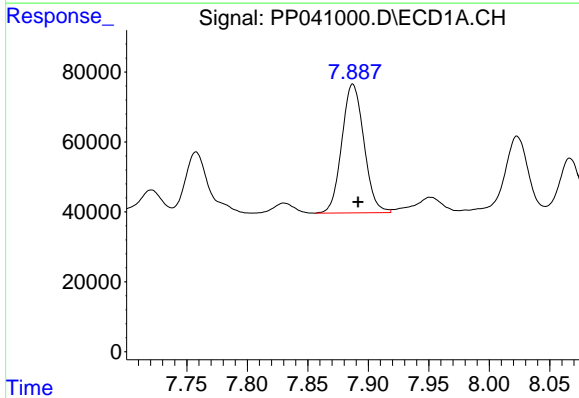
R.T.: 7.592 min
 Delta R.T.: -0.004 min
 Response: 621932
 Conc: 461.96 ng/ml

Instrument :
 ECD_P
 ClientSampleId :



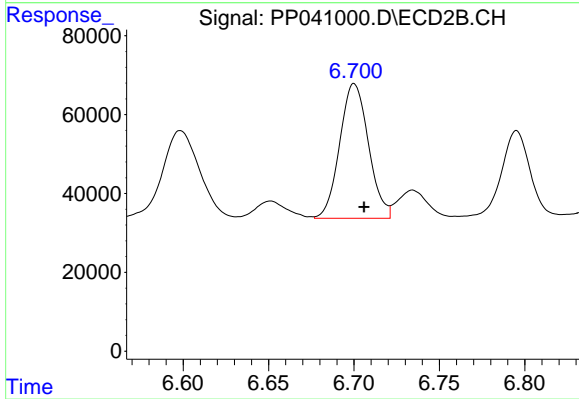
#28 AR-1254-3

R.T.: 6.460 min
 Delta R.T.: -0.005 min
 Response: 678292
 Conc: 537.08 ng/ml



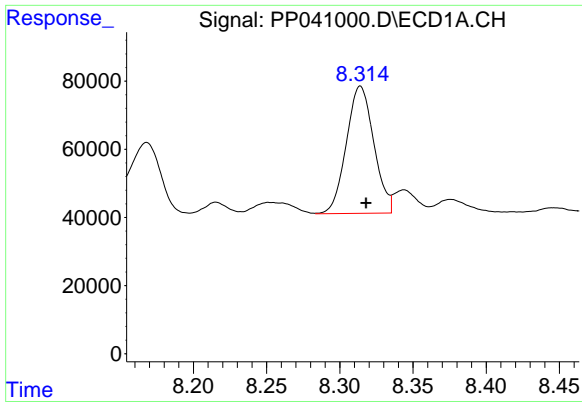
#29 AR-1254-4

R.T.: 7.887 min
 Delta R.T.: -0.004 min
 Response: 468675
 Conc: 480.35 ng/ml



#29 AR-1254-4

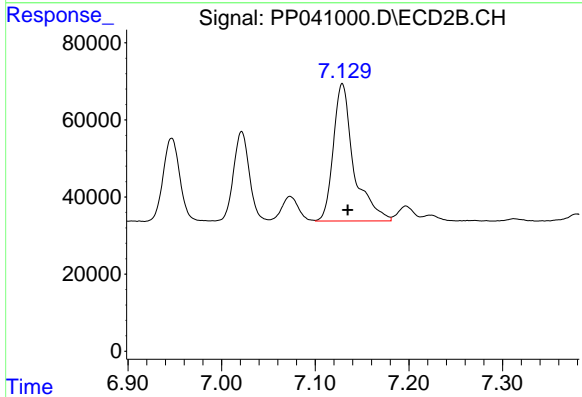
R.T.: 6.700 min
 Delta R.T.: -0.006 min
 Response: 401366
 Conc: 539.43 ng/ml



#30 AR-1254-5

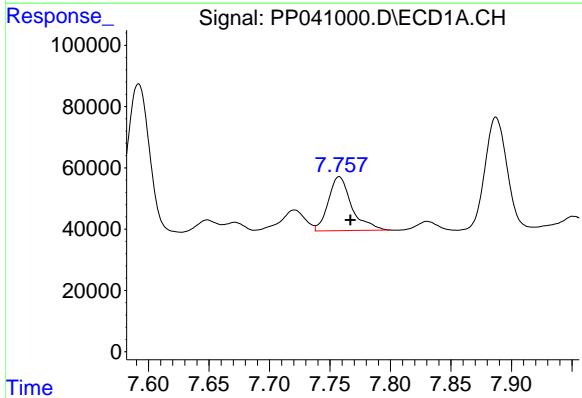
R.T.: 8.314 min
 Delta R.T.: -0.004 min
 Response: 488133
 Conc: 449.92 ng/ml

Instrument :
 ECD_P
 ClientSampleId :



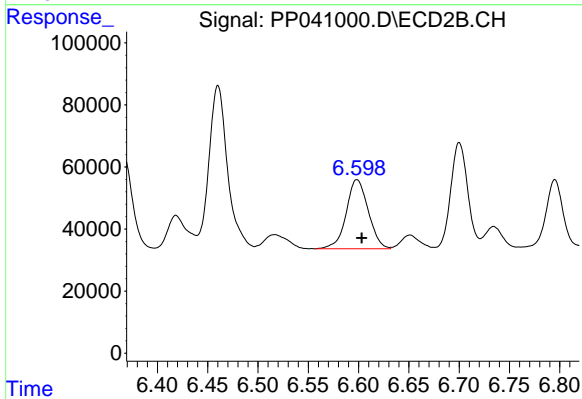
#30 AR-1254-5

R.T.: 7.129 min
 Delta R.T.: -0.006 min
 Response: 541202
 Conc: 503.97 ng/ml



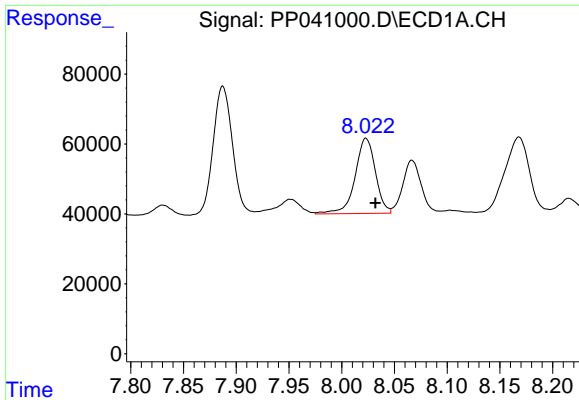
#31 AR-1260-1

R.T.: 7.758 min
 Delta R.T.: -0.009 min
 Response: 236758
 Conc: 243.81 ng/ml



#31 AR-1260-1

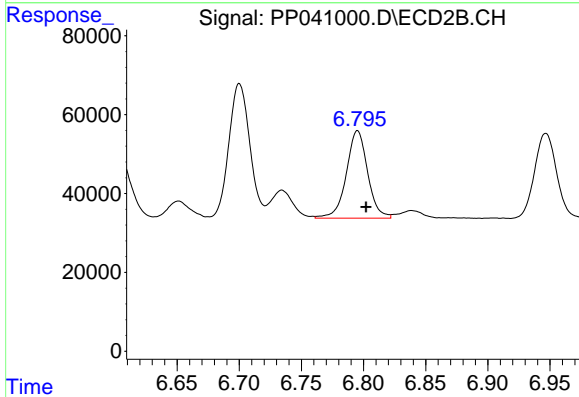
R.T.: 6.598 min
 Delta R.T.: -0.005 min
 Response: 339739
 Conc: 391.54 ng/ml



#32 AR-1260-2

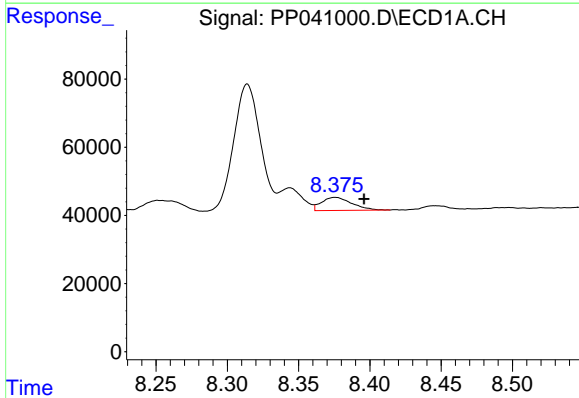
R.T.: 8.023 min
 Delta R.T.: -0.009 min
 Response: 289255
 Conc: 249.85 ng/ml

Instrument :
 ECD_P
 ClientSampleId :



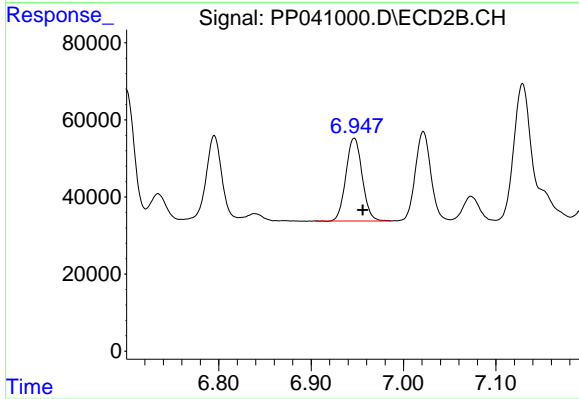
#32 AR-1260-2

R.T.: 6.795 min
 Delta R.T.: -0.007 min
 Response: 265246
 Conc: 263.60 ng/ml



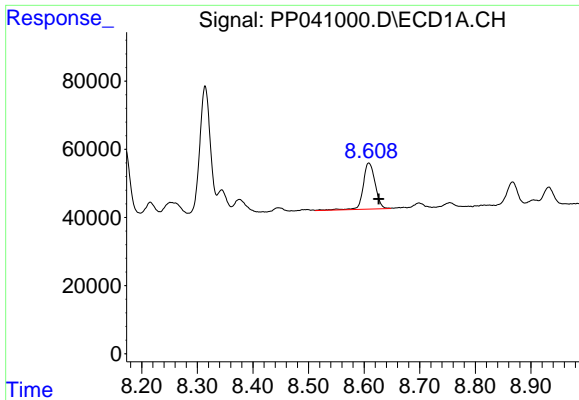
#33 AR-1260-3

R.T.: 8.376 min
 Delta R.T.: -0.020 min
 Response: 56967
 Conc: 64.52 ng/ml



#33 AR-1260-3

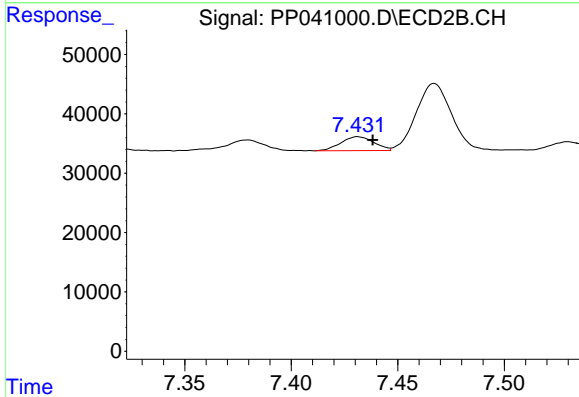
R.T.: 6.947 min
 Delta R.T.: -0.009 min
 Response: 263599
 Conc: 279.27 ng/ml



#34 AR-1260-4

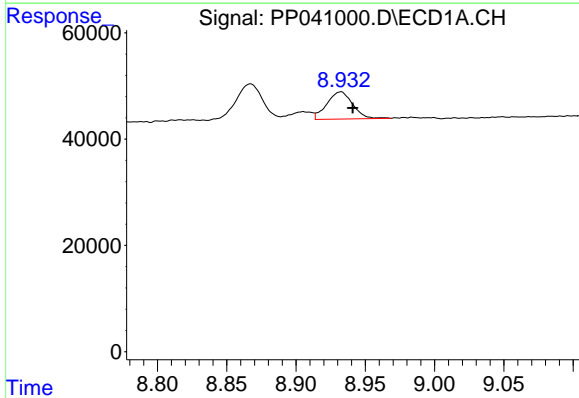
R.T.: 8.608 min
 Delta R.T.: -0.018 min
 Response: 202464
 Conc: 191.62 ng/ml

Instrument :
 ECD_P
 ClientSampleId :



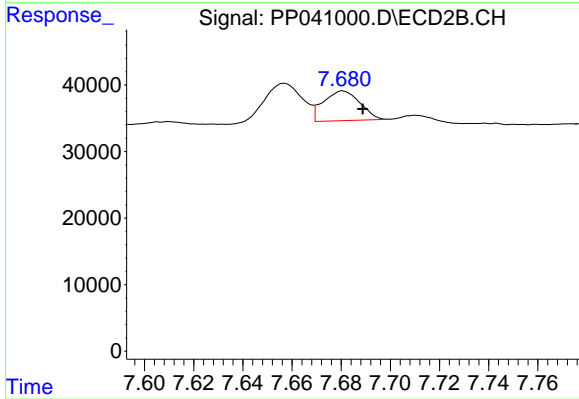
#34 AR-1260-4

R.T.: 7.431 min
 Delta R.T.: -0.007 min
 Response: 25420
 Conc: 32.38 ng/ml



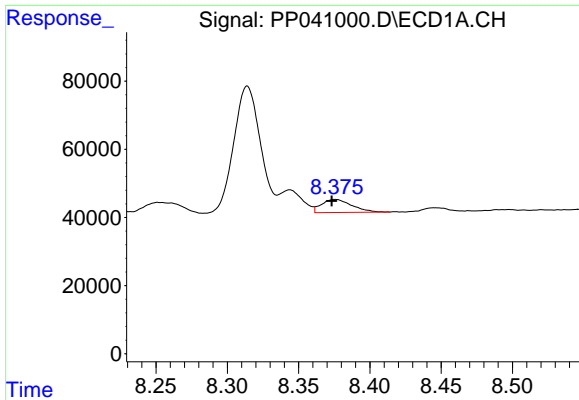
#35 AR-1260-5

R.T.: 8.932 min
 Delta R.T.: -0.009 min
 Response: 66456
 Conc: 31.83 ng/ml



#35 AR-1260-5

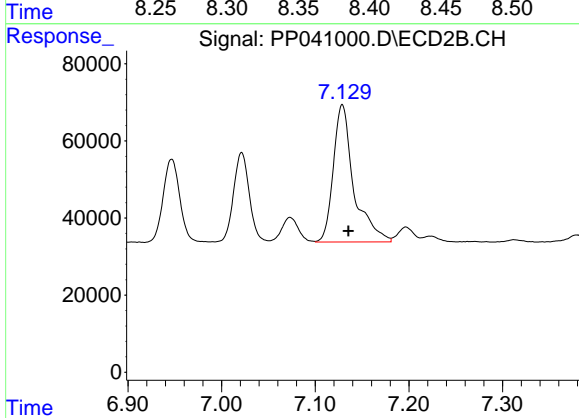
R.T.: 7.681 min
 Delta R.T.: -0.008 min
 Response: 46014
 Conc: 25.90 ng/ml



#36 AR-1262-1

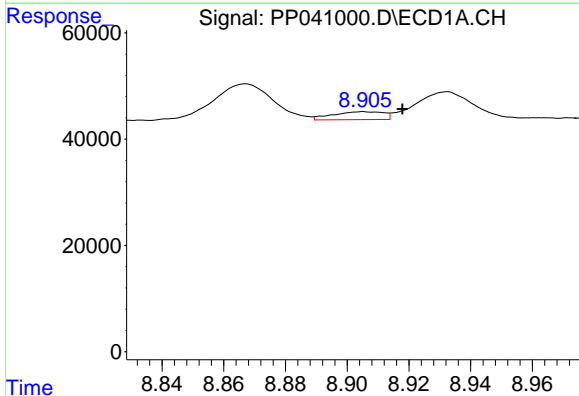
R.T.: 8.376 min
 Delta R.T.: 0.003 min
 Response: 56967
 Conc: 45.46 ng/ml

Instrument :
 ECD_P
 ClientSampleId :



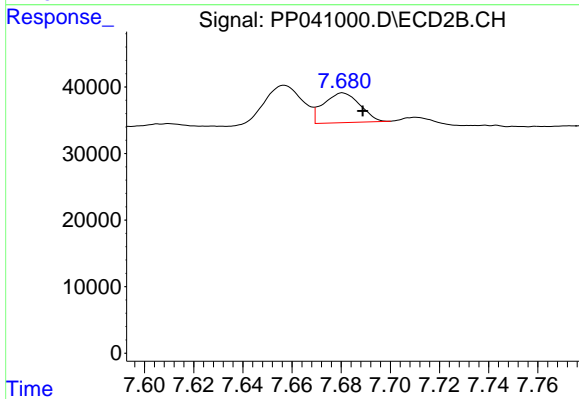
#36 AR-1262-1

R.T.: 7.129 min
 Delta R.T.: -0.006 min
 Response: 541202
 Conc: 939.15 ng/ml



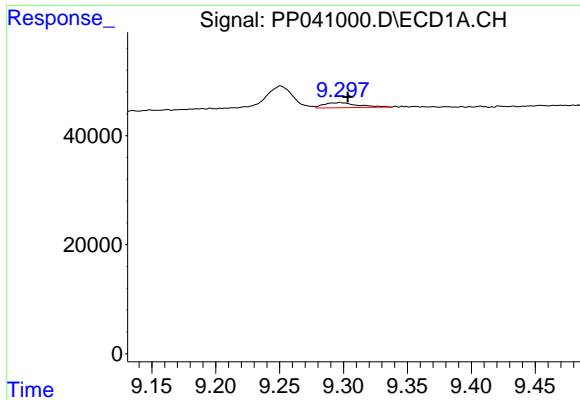
#37 AR-1262-2

R.T.: 8.905 min
 Delta R.T.: -0.013 min
 Response: 17125
 Conc: 7.54 ng/ml



#37 AR-1262-2

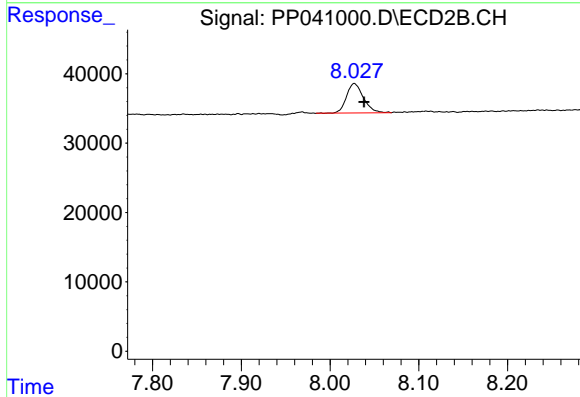
R.T.: 7.681 min
 Delta R.T.: -0.008 min
 Response: 46014
 Conc: 25.84 ng/ml



#39 AR-1262-4

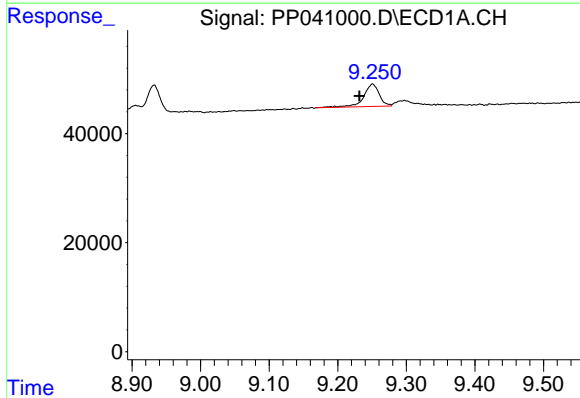
R.T.: 9.297 min
 Delta R.T.: -0.006 min
 Response: 16838
 Conc: 28.71 ng/ml

Instrument :
 ECD_P
 ClientSampleId :



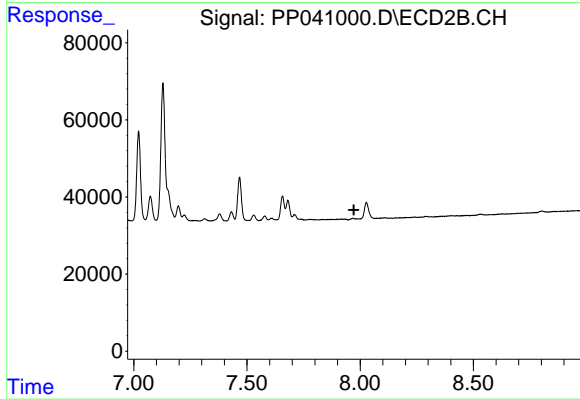
#39 AR-1262-4

R.T.: 8.027 min
 Delta R.T.: -0.011 min
 Response: 56445
 Conc: 40.27 ng/ml



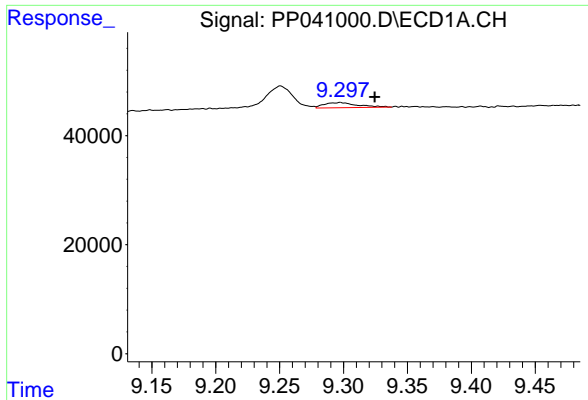
#41 AR-1268-1

R.T.: 9.251 min
 Delta R.T.: 0.019 min
 Response: 64521
 Conc: 23.67 ng/ml



#41 AR-1268-1

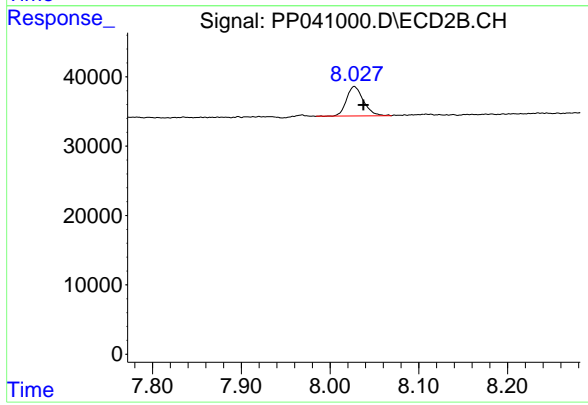
R.T.: 0.000 min
 Exp R.T. : 7.972 min
 Response: 0
 Conc: N.D.



#42 AR-1268-2

R.T.: 9.297 min
 Delta R.T.: -0.027 min
 Response: 16838
 Conc: 6.43 ng/ml

Instrument :
 ECD_P
 ClientSampleId :



#42 AR-1268-2

R.T.: 8.027 min
 Delta R.T.: -0.010 min
 Response: 56445
 Conc: 28.32 ng/ml