

Data Path : Z:\pestpcbsrv\HPCHEM1\ECD_P\Data\PP111122\
 Data File : PP053286.D
 Signal(s) : Signal #1: ECD1A.ch Signal #2: ECD2B.ch
 Acq On : 11 Nov 2022 12:54
 Operator : YP\AJ
 Sample : AR1254CCC500
 Misc :
 ALS Vial : 6 Sample Multiplier: 1

Instrument :
 ECD_P
 ClientSampleId :

Integration File signal 1: autoint1.e
 Integration File signal 2: autoint2.e
 Quant Time: Nov 11 20:13:05 2022
 Quant Method : Z:\pestpcbsrv\HPCHEM1\ECD_P\methods\PP110822.M
 Quant Title : GC EXTRACTABLES
 QLast Update : Wed Nov 09 05:50:05 2022
 Response via : Initial Calibration
 Integrator: ChemStation

Volume Inj. : 2 µl
 Signal #1 Phase : ZB-MR1 Signal #2 Phase: ZB-MR2
 Signal #1 Info : 30Mx0.32mmx 0.50µ Signal #2 Info : 30M x 0.32mm x 0.25µm

Compound	RT#1	RT#2	Resp#1	Resp#2	ng/ml	ng/ml
System Monitoring Compounds						
1) SA Tetrachlo...	4.407	3.650	98986147	86721458	51.493	57.651
2) SA Decachlor...	10.214	8.734	70143504	91410309	51.730	48.769
Target Compounds						
3) L1 AR-1016-1	5.580	4.751	741542	720158	11.920	12.840
4) L1 AR-1016-2	5.610	4.769	1120266	545202	12.121	7.024 #
5) L1 AR-1016-3	5.667	4.949	427633	1045911	7.556	24.909 #
6) L1 AR-1016-4	5.764	4.991	470044	16029093	10.333	458.621 #
7) L1 AR-1016-5	6.062	5.207	11393483	14660708	251.707	322.780 #
8) L2 AR-1221-1	4.613	0.000	216513	0	9.633	N.D. #
9) L2 AR-1221-2	4.714f	3.955	1387714	1148664	83.516	78.418
10) L2 AR-1221-3	4.779	4.031	312440	248364	6.204	5.530
11) L3 AR-1232-1	4.779	4.031	312440	248364	8.148	7.349
12) L3 AR-1232-2	5.312	4.769	436546	545202	19.395	15.664
13) L3 AR-1232-3	5.610	4.949	1120266	1045911	27.601	56.060 #
14) L3 AR-1232-4	5.764	5.032	470044	6093410	23.290	346.144 #
15) L3 AR-1232-5	5.856	5.207	18485270	14660708	1114.846	736.639 #
16) L4 AR-1242-1	5.580	4.751	741542	720158	15.216	16.334
17) L4 AR-1242-2	5.610	4.769	1120266	545202	15.539	8.815 #
18) L4 AR-1242-3	5.667	4.949	427633	1045911	9.549	31.493 #
19) L4 AR-1242-4	5.764	5.032	470044	6093410	13.070	174.294 #
20) L4 AR-1242-5	6.510	5.565	17034942	50446744	466.589	1151.992 #
21) L5 AR-1248-1	5.580	4.751	741542	720158	19.882	21.004
22) L5 AR-1248-2	5.856	4.991	18485270	16029093	337.861	333.784
23) L5 AR-1248-3	6.062	5.032	11393483	6093410	191.202	122.969 #
24) L5 AR-1248-4	6.467	5.207	17417501	14660708	282.312	248.239
25) L5 AR-1248-5	6.510	5.604	17034942	6209871	282.401	112.878 #
26) L6 AR-1254-1	6.442	5.565	36869340	50446744	521.516	556.497
27) L6 AR-1254-2	6.661	5.714	53289917	43252246	507.283	532.697
28) L6 AR-1254-3	7.029	6.123	50720175	66672080	494.477	524.504
29) L6 AR-1254-4	7.315	6.354	35134310	40878957	505.032	518.415
30) L6 AR-1254-5	7.737	6.777	38134061	64430825	481.449	510.103
31) L7 AR-1260-1	7.194	6.255	11956612	35053113	146.218	382.386 #
32) L7 AR-1260-2	7.451	6.445	23289764	29938856	251.487	260.174
33) L7 AR-1260-3	7.797	6.599	5332987	29175948	85.508	271.890 #
34) L7 AR-1260-4	8.026	7.077	15544745	3169416	207.503	38.309 #
35) L7 AR-1260-5	8.364	7.321	5610403	7482661	44.328	39.517
36) L8 AR-1262-1	7.797	6.847f	5332987	7514912	55.500	142.710 #
37) L8 AR-1262-2	8.364	7.077	5610403	3169416	37.064	27.331 #
38) L8 AR-1262-3	8.695f	7.607	4104635	538311	39.618	5.877 #
39) L8 AR-1262-4	8.741f	7.670	1396350	7473628	17.269	45.569 #
40) L8 AR-1262-5	9.419	8.174	29412	824842	0.578	10.858 #
41) L9 AR-1268-1	8.695f	7.607	4104635	538311	21.664	2.014 #

Data Path : Z:\pestpcbsrv\HPCHEM1\ECD_P\Data\PP111122\
 Data File : PP053286.D
 Signal(s) : Signal #1: ECD1A.ch Signal #2: ECD2B.ch
 Acq On : 11 Nov 2022 12:54
 Operator : YP\AJ
 Sample : AR1254CCC500
 Misc :
 ALS Vial : 6 Sample Multiplier: 1

Instrument :
 ECD_P
 ClientSampleId :

Integration File signal 1: autoint1.e
 Integration File signal 2: autoint2.e
 Quant Time: Nov 11 20:13:05 2022
 Quant Method : Z:\pestpcbsrv\HPCHEM1\ECD_P\methods\PP110822.M
 Quant Title : GC EXTRACTABLES
 QLast Update : Wed Nov 09 05:50:05 2022
 Response via : Initial Calibration
 Integrator: ChemStation

Volume Inj. : 2 µl
 Signal #1 Phase : ZB-MR1 Signal #2 Phase: ZB-MR2
 Signal #1 Info : 30Mx0.32mmx 0.50µ Signal #2 Info : 30M x 0.32mm x 0.25µm

	Compound	RT#1	RT#2	Resp#1	Resp#2	ng/ml	ng/ml
42)	L9 AR-1268-2	8.741f	7.670	1396350	7473628	8.232	31.300 #
43)	L9 AR-1268-3	9.011f	7.880	149436	427586	0.998	2.080 #
44)	L9 AR-1268-4	9.419	8.174	29412	824842	0.525	10.021 #
45)	L9 AR-1268-5	9.867f	8.472	434695	710765	0.944	1.071

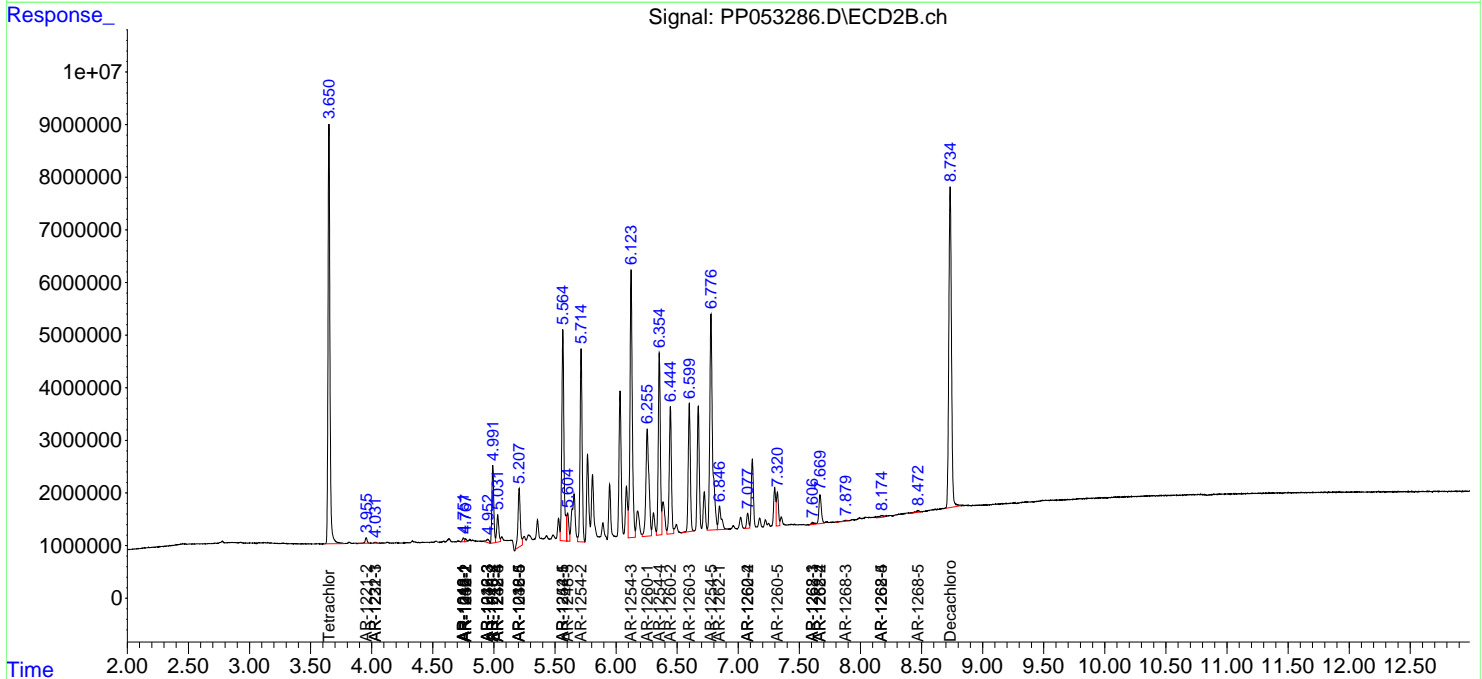
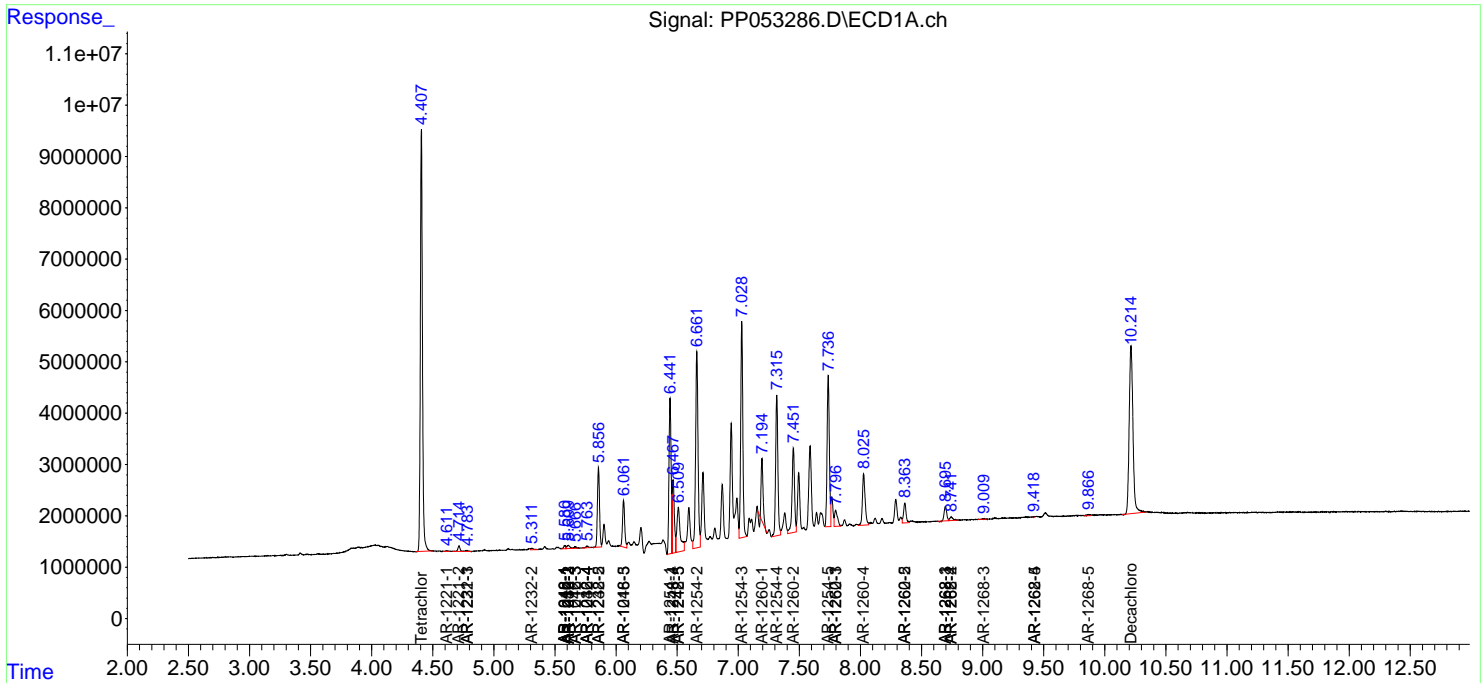
(f)=RT Delta > 1/2 Window (#)=Amounts differ by > 25% (m)=manual int.

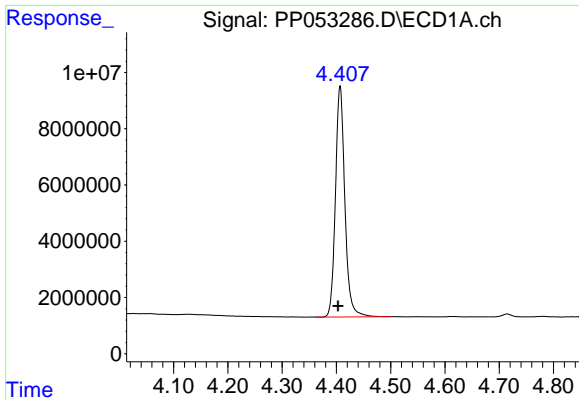
Data Path : Z:\pestpcbsrv\HPCHEM1\ECD_P\Data\PP111122\
 Data File : PP053286.D
 Signal(s) : Signal #1: ECD1A.ch Signal #2: ECD2B.ch
 Acq On : 11 Nov 2022 12:54
 Operator : YP\AJ
 Sample : AR1254CCC500
 Misc :
 ALS Vial : 6 Sample Multiplier: 1

Instrument :
 ECD_P
 ClientSampleId :

Integration File signal 1: autoint1.e
 Integration File signal 2: autoint2.e
 Quant Time: Nov 11 20:13:05 2022
 Quant Method : Z:\pestpcbsrv\HPCHEM1\ECD_P\methods\PP110822.M
 Quant Title : GC EXTRACTABLES
 QLast Update : Wed Nov 09 05:50:05 2022
 Response via : Initial Calibration
 Integrator: ChemStation

Volume Inj. : 2 µl
 Signal #1 Phase : ZB-MR1 Signal #2 Phase: ZB-MR2
 Signal #1 Info : 30Mx0.32mmx 0.50µ Signal #2 Info : 30M x 0.32mm x 0.25µm

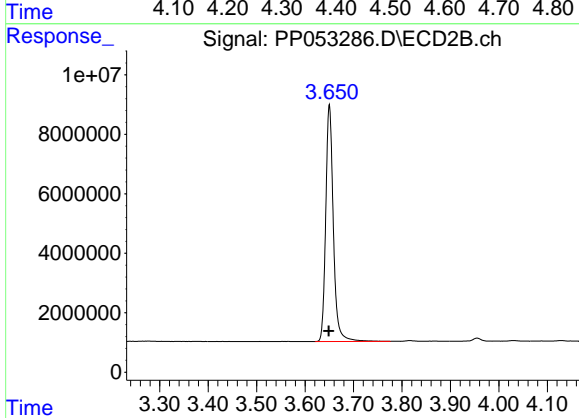




#1 Tetrachloro-m-xylene

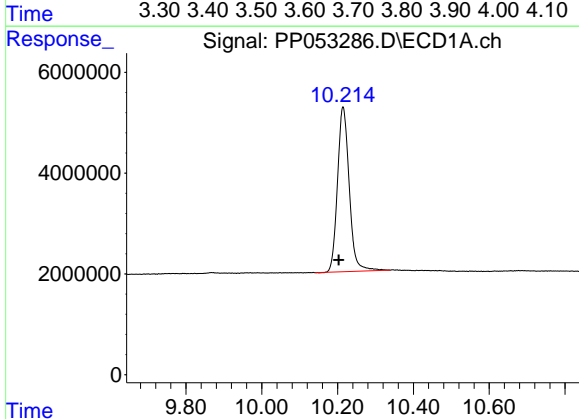
R.T.: 4.407 min
 Delta R.T.: 0.004 min
 Response: 98986147
 Conc: 51.49 ng/ml

Instrument :
 ECD_P
 ClientSampleId :



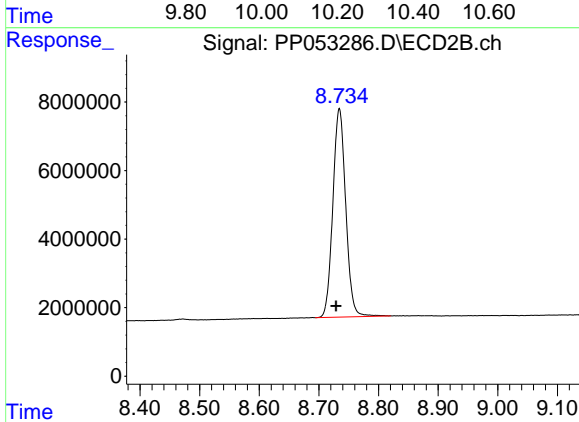
#1 Tetrachloro-m-xylene

R.T.: 3.650 min
 Delta R.T.: 0.001 min
 Response: 86721458
 Conc: 57.65 ng/ml



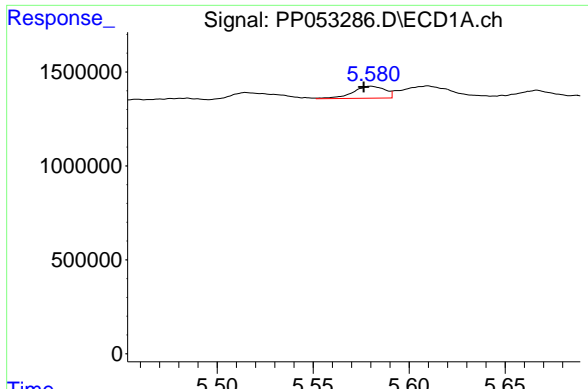
#2 Decachlorobiphenyl

R.T.: 10.214 min
 Delta R.T.: 0.012 min
 Response: 70143504
 Conc: 51.73 ng/ml



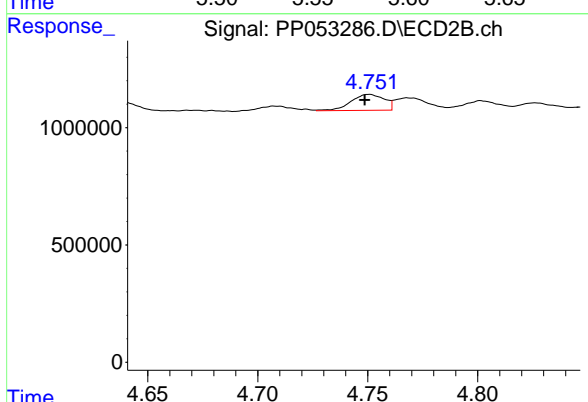
#2 Decachlorobiphenyl

R.T.: 8.734 min
 Delta R.T.: 0.006 min
 Response: 91410309
 Conc: 48.77 ng/ml

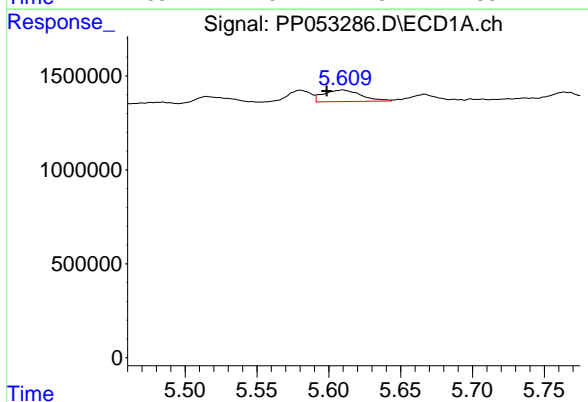


#3 AR-1016-1
 R.T.: 5.580 min
 Delta R.T.: 0.004 min
 Response: 741542
 Conc: 11.92 ng/ml

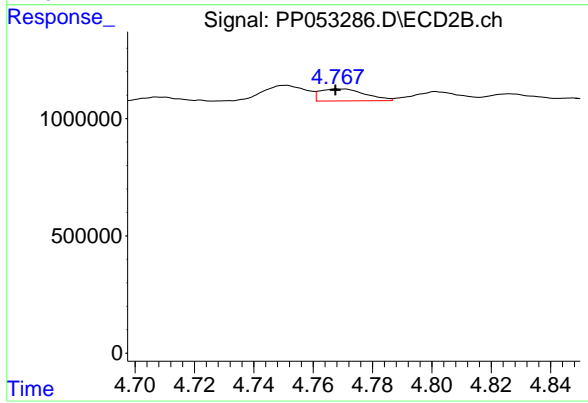
Instrument :
 ECD_P
 ClientSampleId :



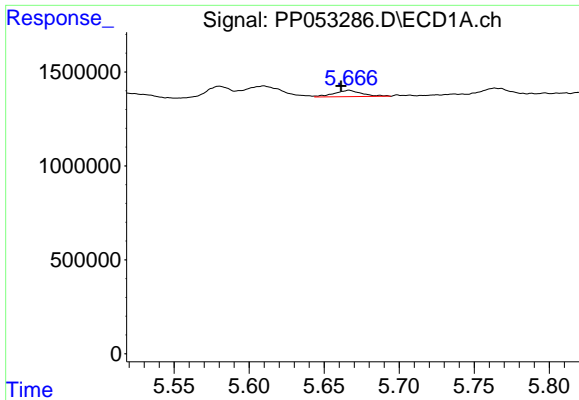
#3 AR-1016-1
 R.T.: 4.751 min
 Delta R.T.: 0.002 min
 Response: 720158
 Conc: 12.84 ng/ml



#4 AR-1016-2
 R.T.: 5.610 min
 Delta R.T.: 0.011 min
 Response: 1120266
 Conc: 12.12 ng/ml



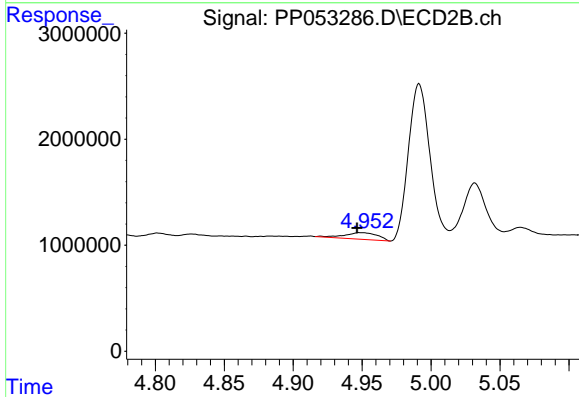
#4 AR-1016-2
 R.T.: 4.769 min
 Delta R.T.: 0.001 min
 Response: 545202
 Conc: 7.02 ng/ml



#5 AR-1016-3

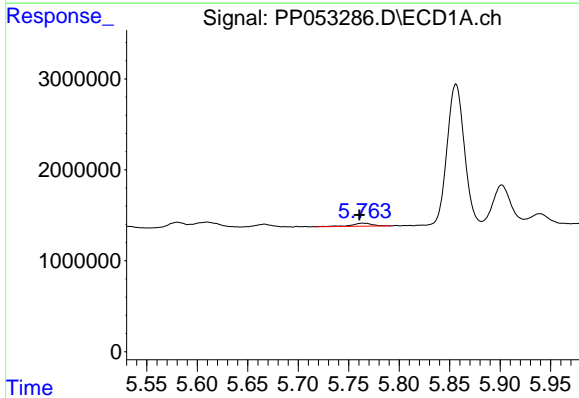
R.T.: 5.667 min
 Delta R.T.: 0.005 min
 Response: 427633
 Conc: 7.56 ng/ml

Instrument :
 ECD_P
 ClientSampleId :



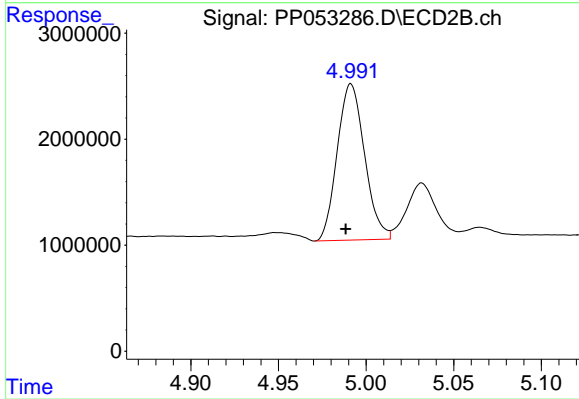
#5 AR-1016-3

R.T.: 4.949 min
 Delta R.T.: 0.002 min
 Response: 1045911
 Conc: 24.91 ng/ml



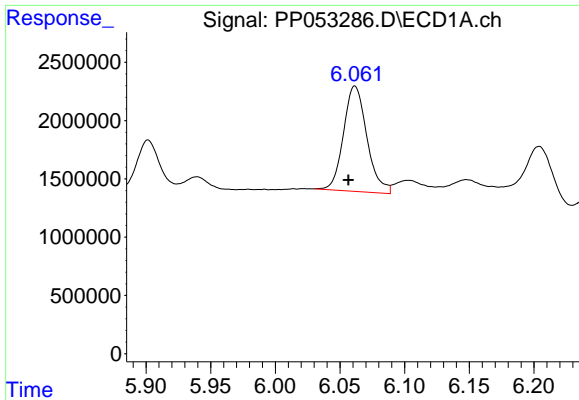
#6 AR-1016-4

R.T.: 5.764 min
 Delta R.T.: 0.003 min
 Response: 470044
 Conc: 10.33 ng/ml



#6 AR-1016-4

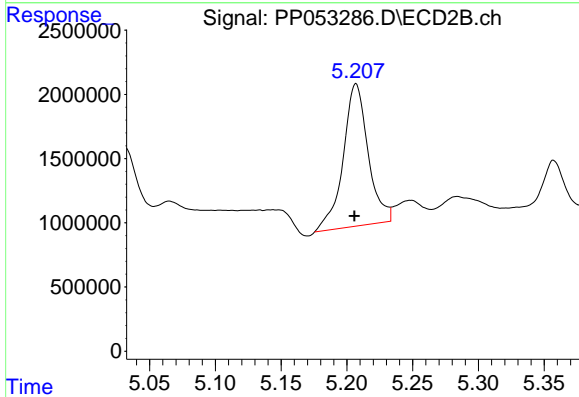
R.T.: 4.991 min
 Delta R.T.: 0.003 min
 Response: 16029093
 Conc: 458.62 ng/ml



#7 AR-1016-5

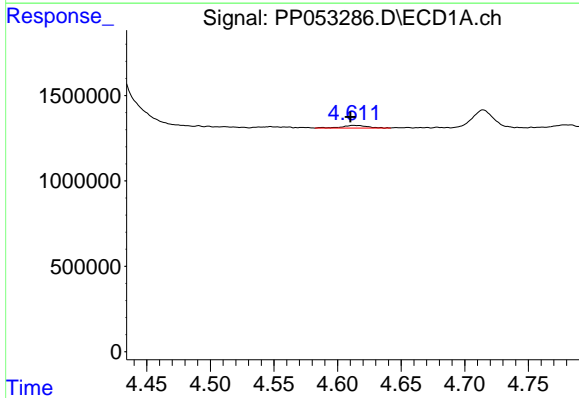
R.T.: 6.062 min
 Delta R.T.: 0.005 min
 Response: 11393483
 Conc: 251.71 ng/ml

Instrument :
 ECD_P
 ClientSampleId :



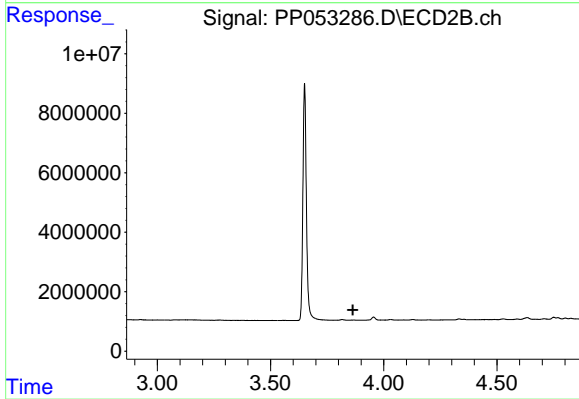
#7 AR-1016-5

R.T.: 5.207 min
 Delta R.T.: 0.001 min
 Response: 14660708
 Conc: 322.78 ng/ml



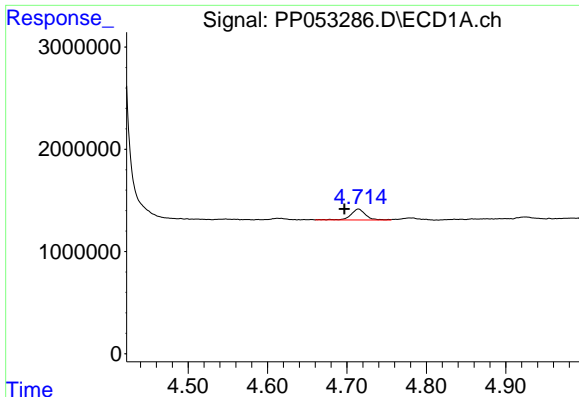
#8 AR-1221-1

R.T.: 4.613 min
 Delta R.T.: 0.002 min
 Response: 216513
 Conc: 9.63 ng/ml



#8 AR-1221-1

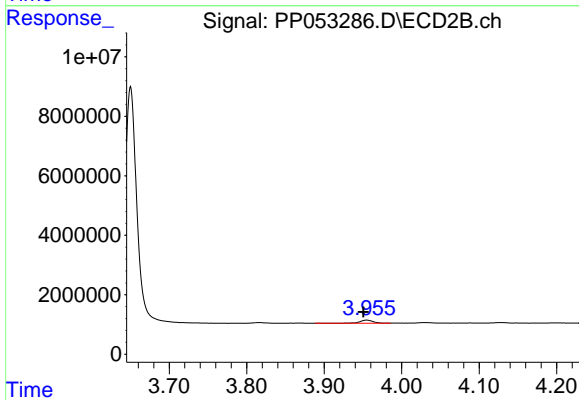
R.T.: 0.000 min
 Exp R.T. : 3.863 min
 Response: 0
 Conc: N.D.



#9 AR-1221-2

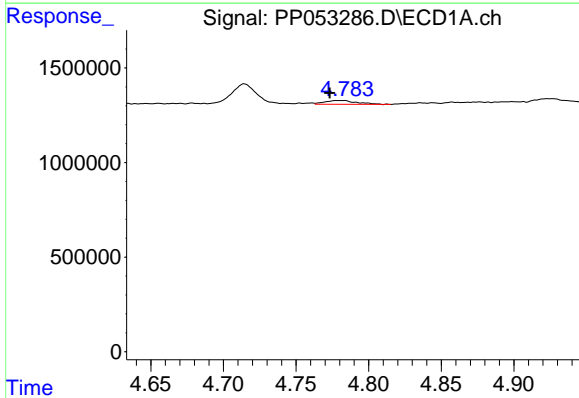
R.T.: 4.714 min
 Delta R.T.: 0.018 min
 Response: 1387714
 Conc: 83.52 ng/ml

Instrument :
 ECD_P
 ClientSampleId :



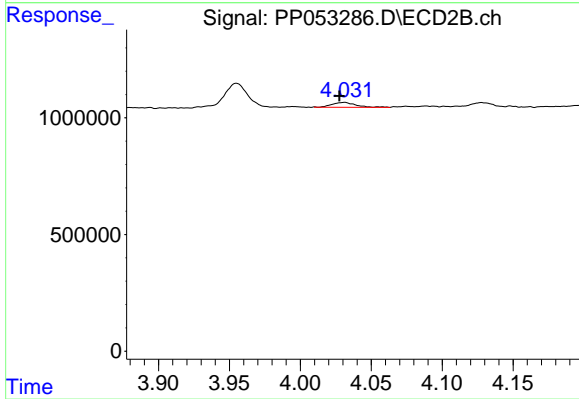
#9 AR-1221-2

R.T.: 3.955 min
 Delta R.T.: 0.005 min
 Response: 1148664
 Conc: 78.42 ng/ml



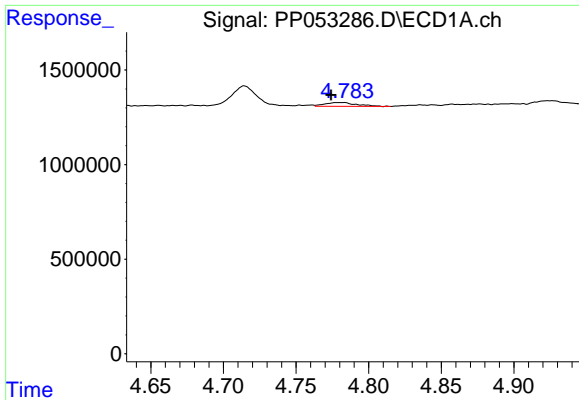
#10 AR-1221-3

R.T.: 4.779 min
 Delta R.T.: 0.006 min
 Response: 312440
 Conc: 6.20 ng/ml



#10 AR-1221-3

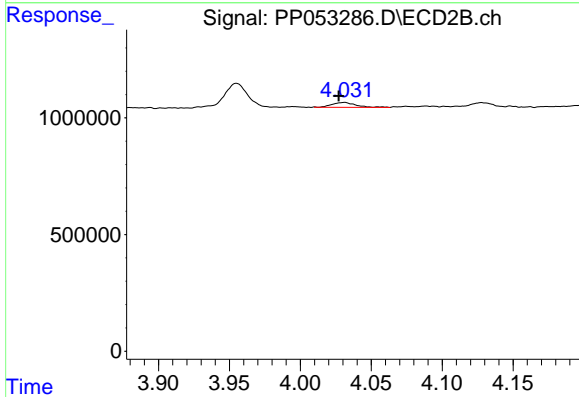
R.T.: 4.031 min
 Delta R.T.: 0.003 min
 Response: 248364
 Conc: 5.53 ng/ml



#11 AR-1232-1

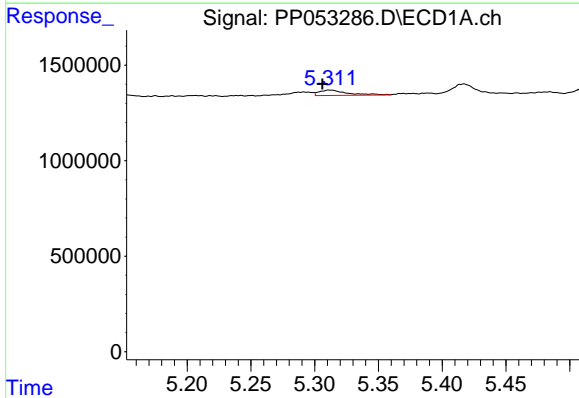
R.T.: 4.779 min
 Delta R.T.: 0.005 min
 Response: 312440
 Conc: 8.15 ng/ml

Instrument :
 ECD_P
 ClientSampleId :



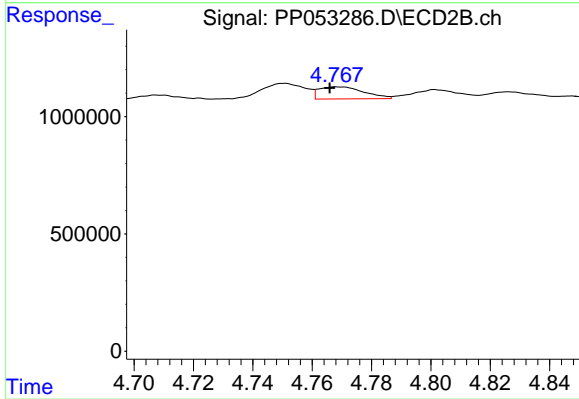
#11 AR-1232-1

R.T.: 4.031 min
 Delta R.T.: 0.004 min
 Response: 248364
 Conc: 7.35 ng/ml



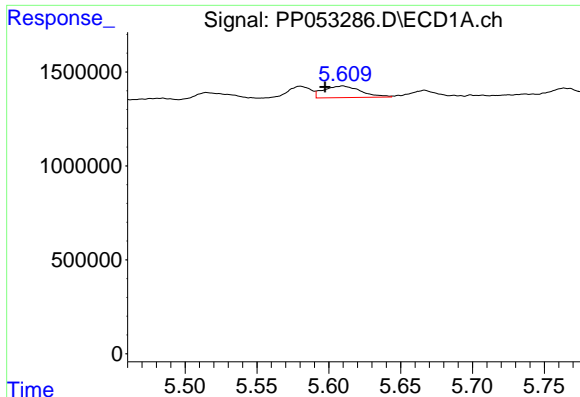
#12 AR-1232-2

R.T.: 5.312 min
 Delta R.T.: 0.006 min
 Response: 436546
 Conc: 19.40 ng/ml



#12 AR-1232-2

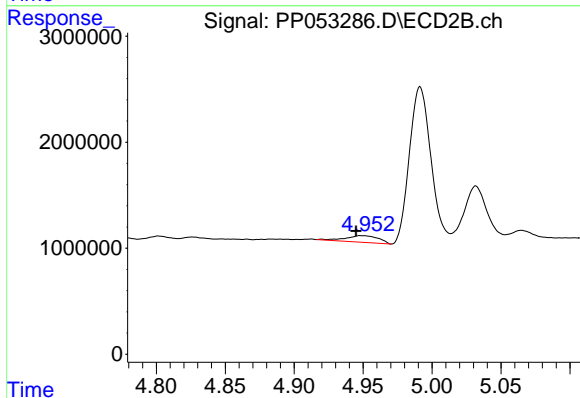
R.T.: 4.769 min
 Delta R.T.: 0.003 min
 Response: 545202
 Conc: 15.66 ng/ml



#13 AR-1232-3

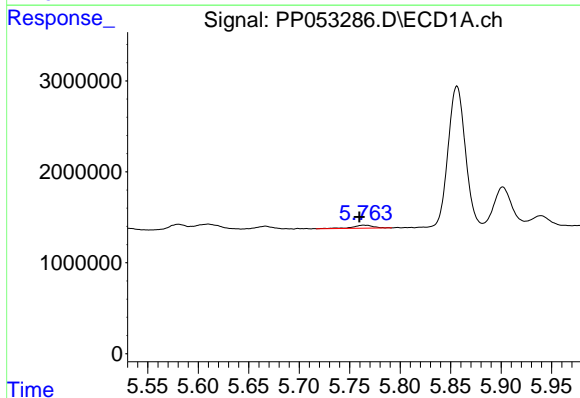
R.T.: 5.610 min
 Delta R.T.: 0.012 min
 Response: 1120266
 Conc: 27.60 ng/ml

Instrument :
 ECD_P
 ClientSampleId :



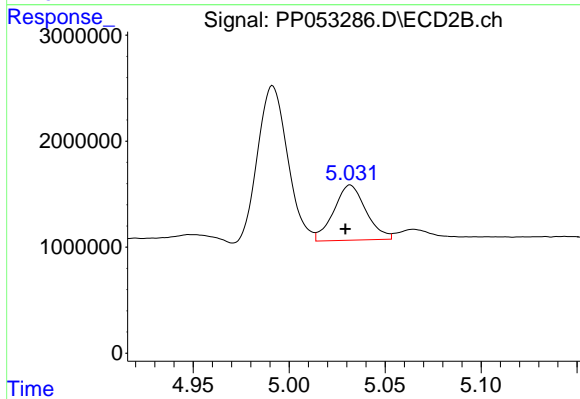
#13 AR-1232-3

R.T.: 4.949 min
 Delta R.T.: 0.004 min
 Response: 1045911
 Conc: 56.06 ng/ml



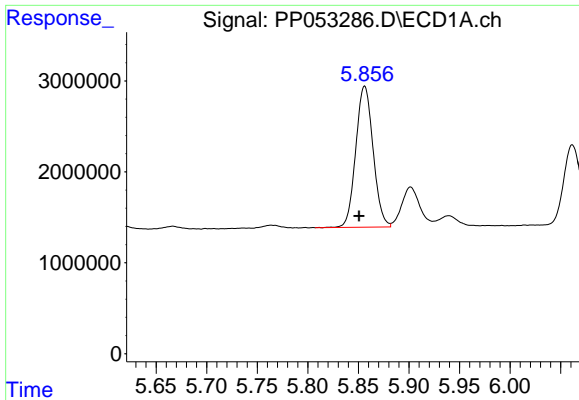
#14 AR-1232-4

R.T.: 5.764 min
 Delta R.T.: 0.004 min
 Response: 470044
 Conc: 23.29 ng/ml



#14 AR-1232-4

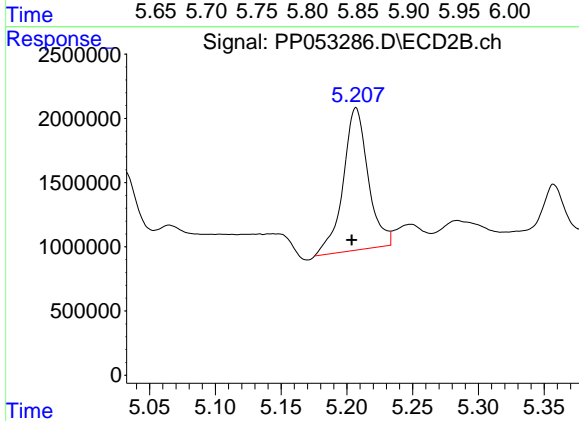
R.T.: 5.032 min
 Delta R.T.: 0.002 min
 Response: 6093410
 Conc: 346.14 ng/ml



#15 AR-1232-5

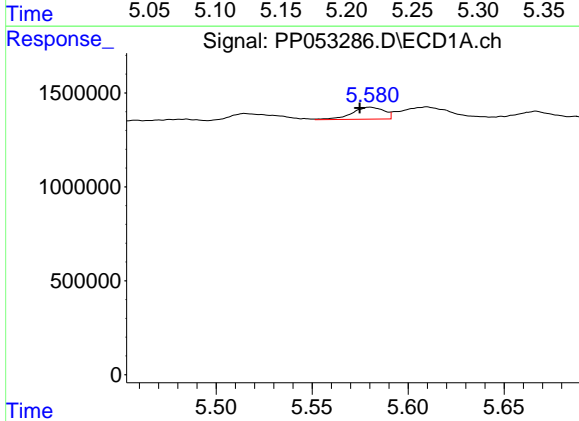
R.T.: 5.856 min
 Delta R.T.: 0.006 min
 Response: 18485270
 Conc: 1114.85 ng/ml

Instrument :
 ECD_P
 ClientSampleId :



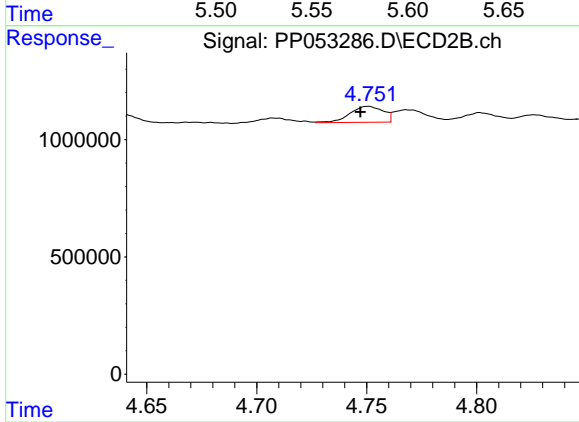
#15 AR-1232-5

R.T.: 5.207 min
 Delta R.T.: 0.003 min
 Response: 14660708
 Conc: 736.64 ng/ml



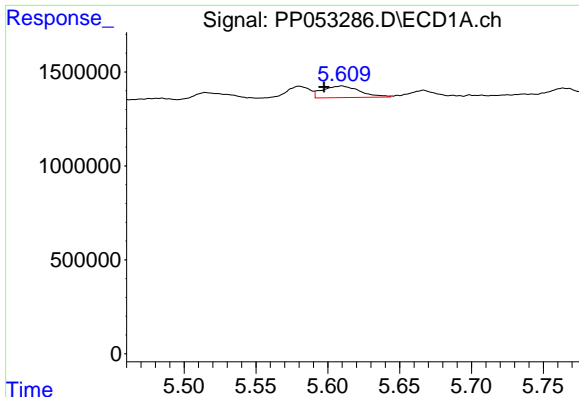
#16 AR-1242-1

R.T.: 5.580 min
 Delta R.T.: 0.005 min
 Response: 741542
 Conc: 15.22 ng/ml



#16 AR-1242-1

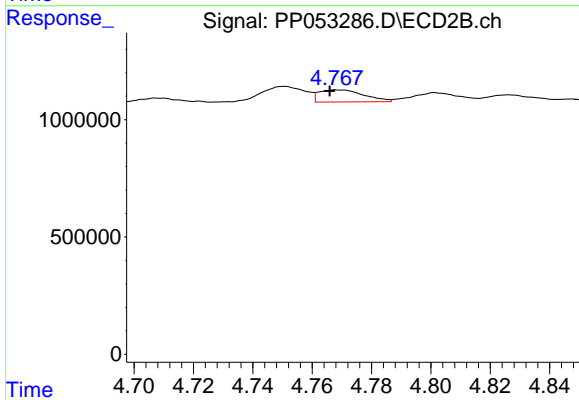
R.T.: 4.751 min
 Delta R.T.: 0.003 min
 Response: 720158
 Conc: 16.33 ng/ml



#17 AR-1242-2

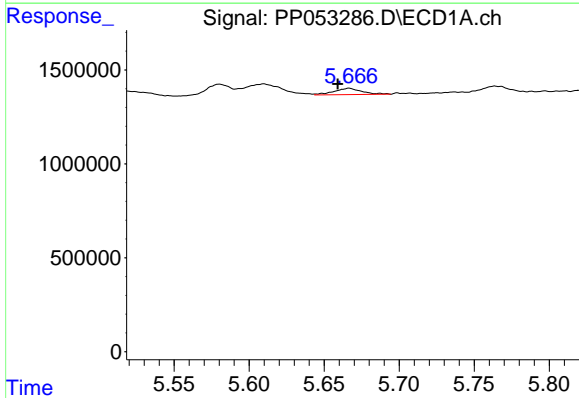
R.T.: 5.610 min
 Delta R.T.: 0.012 min
 Response: 1120266
 Conc: 15.54 ng/ml

Instrument :
 ECD_P
 ClientSampleId :



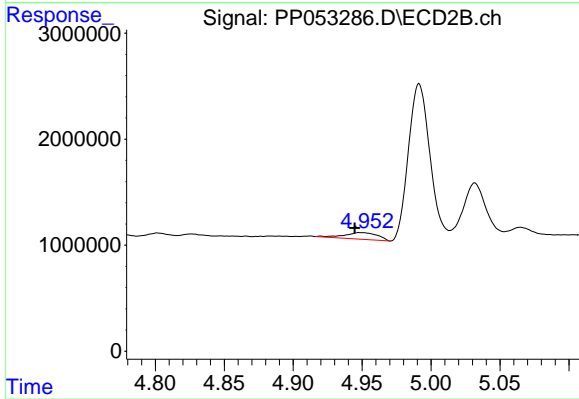
#17 AR-1242-2

R.T.: 4.769 min
 Delta R.T.: 0.003 min
 Response: 545202
 Conc: 8.82 ng/ml



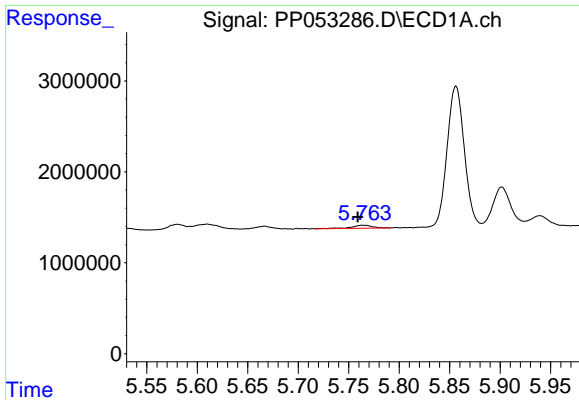
#18 AR-1242-3

R.T.: 5.667 min
 Delta R.T.: 0.008 min
 Response: 427633
 Conc: 9.55 ng/ml



#18 AR-1242-3

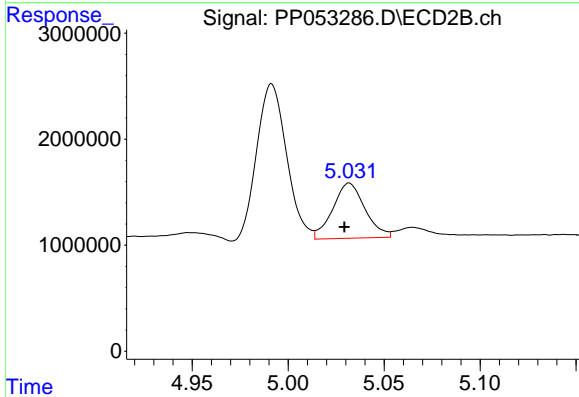
R.T.: 4.949 min
 Delta R.T.: 0.004 min
 Response: 1045911
 Conc: 31.49 ng/ml



#19 AR-1242-4

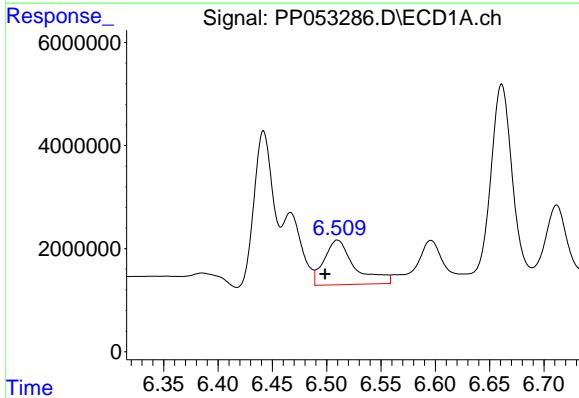
R.T.: 5.764 min
 Delta R.T.: 0.005 min
 Response: 470044
 Conc: 13.07 ng/ml

Instrument :
 ECD_P
 ClientSampleId :



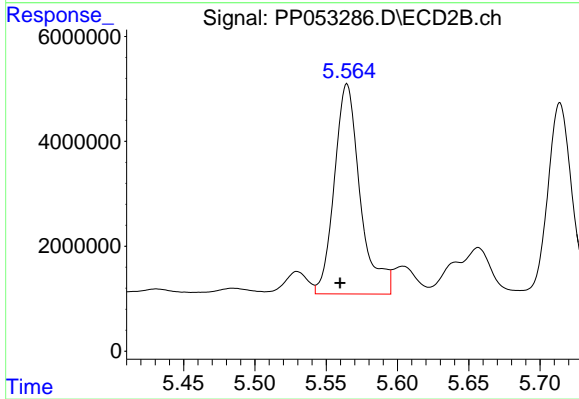
#19 AR-1242-4

R.T.: 5.032 min
 Delta R.T.: 0.002 min
 Response: 6093410
 Conc: 174.29 ng/ml



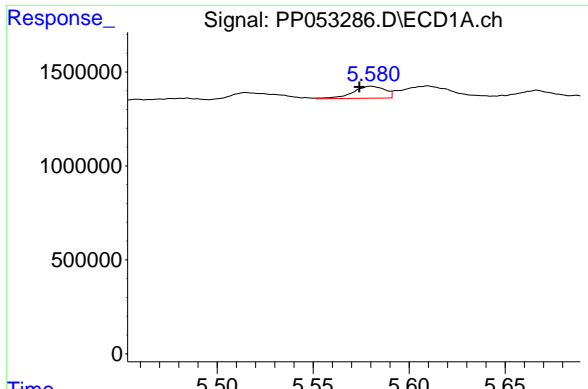
#20 AR-1242-5

R.T.: 6.510 min
 Delta R.T.: 0.011 min
 Response: 17034942
 Conc: 466.59 ng/ml



#20 AR-1242-5

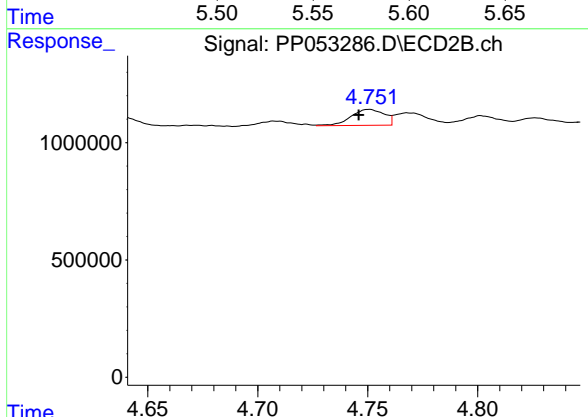
R.T.: 5.565 min
 Delta R.T.: 0.005 min
 Response: 50446744
 Conc: 1151.99 ng/ml



#21 AR-1248-1

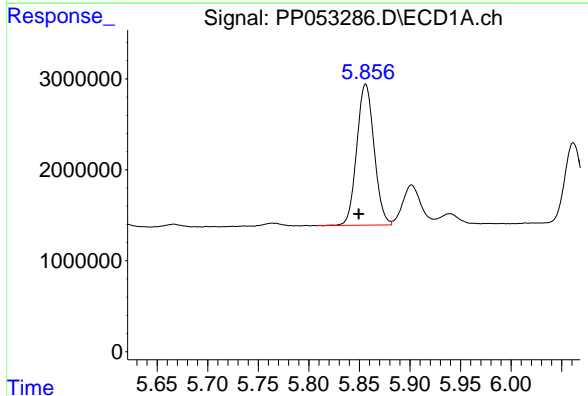
R.T.: 5.580 min
 Delta R.T.: 0.006 min
 Response: 741542
 Conc: 19.88 ng/ml

Instrument :
 ECD_P
 ClientSampleId :



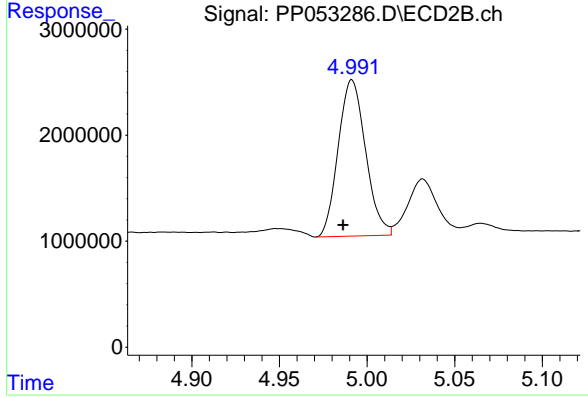
#21 AR-1248-1

R.T.: 4.751 min
 Delta R.T.: 0.005 min
 Response: 720158
 Conc: 21.00 ng/ml



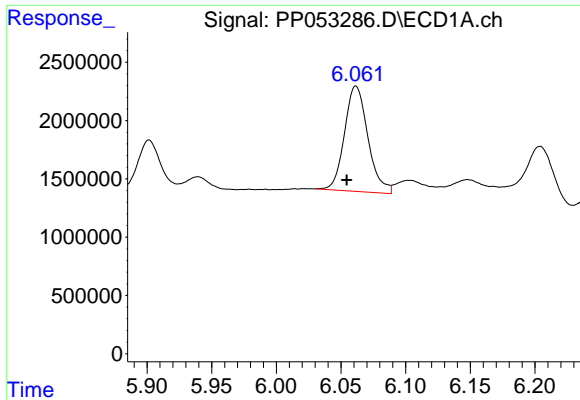
#22 AR-1248-2

R.T.: 5.856 min
 Delta R.T.: 0.007 min
 Response: 18485270
 Conc: 337.86 ng/ml



#22 AR-1248-2

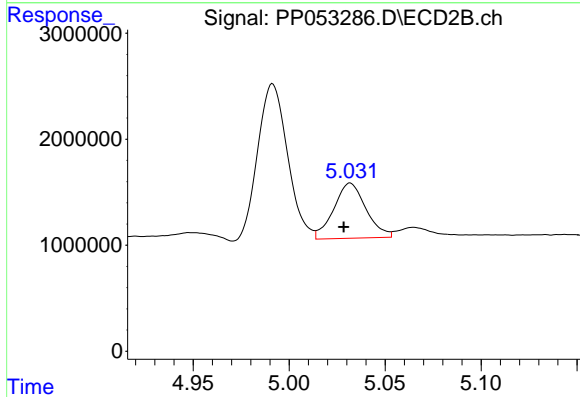
R.T.: 4.991 min
 Delta R.T.: 0.005 min
 Response: 16029093
 Conc: 333.78 ng/ml



#23 AR-1248-3

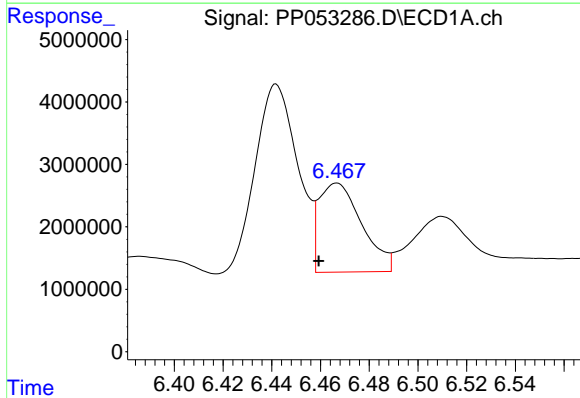
R.T.: 6.062 min
 Delta R.T.: 0.007 min
 Response: 11393483
 Conc: 191.20 ng/ml

Instrument :
 ECD_P
 ClientSampleId :



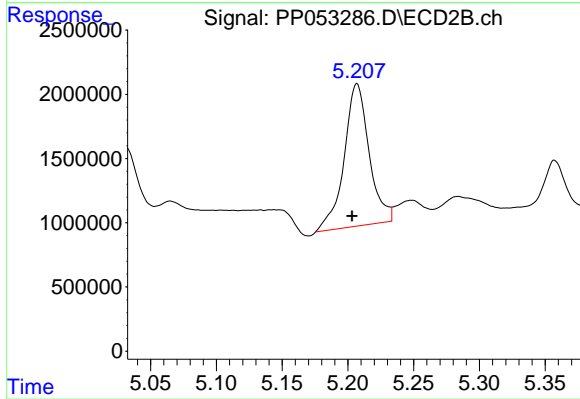
#23 AR-1248-3

R.T.: 5.032 min
 Delta R.T.: 0.003 min
 Response: 6093410
 Conc: 122.97 ng/ml



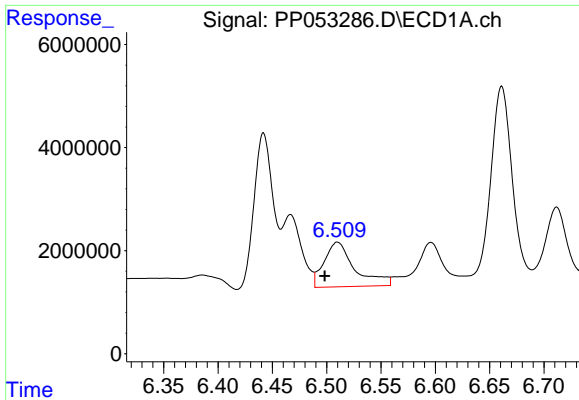
#24 AR-1248-4

R.T.: 6.467 min
 Delta R.T.: 0.007 min
 Response: 17417501
 Conc: 282.31 ng/ml



#24 AR-1248-4

R.T.: 5.207 min
 Delta R.T.: 0.004 min
 Response: 14660708
 Conc: 248.24 ng/ml

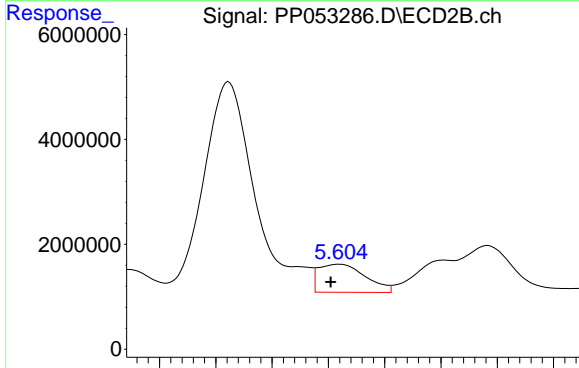


#25 AR-1248-5

R.T.: 6.510 min
 Delta R.T.: 0.012 min
 Response: 17034942
 Conc: 282.40 ng/ml

Instrument :
 ECD_P
 ClientSampleId :

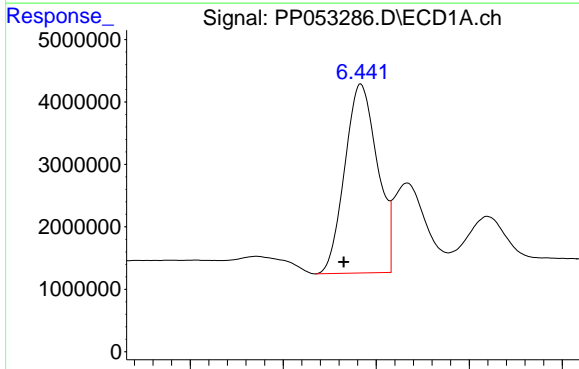
Time 6.35 6.40 6.45 6.50 6.55 6.60 6.65 6.70



#25 AR-1248-5

R.T.: 5.604 min
 Delta R.T.: 0.003 min
 Response: 6209871
 Conc: 112.88 ng/ml

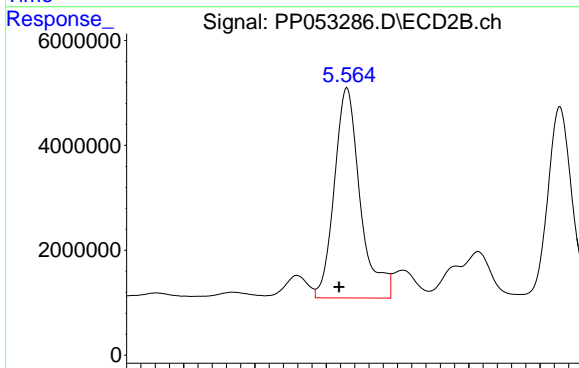
Time 5.54 5.56 5.58 5.60 5.62 5.64 5.66 5.68



#26 AR-1254-1

R.T.: 6.442 min
 Delta R.T.: 0.009 min
 Response: 36869340
 Conc: 521.52 ng/ml

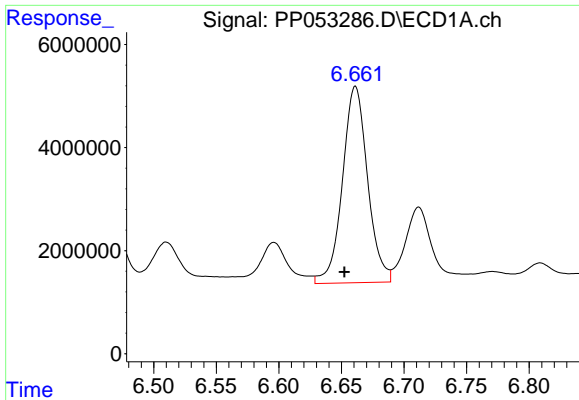
Time 6.35 6.40 6.45 6.50



#26 AR-1254-1

R.T.: 5.565 min
 Delta R.T.: 0.006 min
 Response: 50446744
 Conc: 556.50 ng/ml

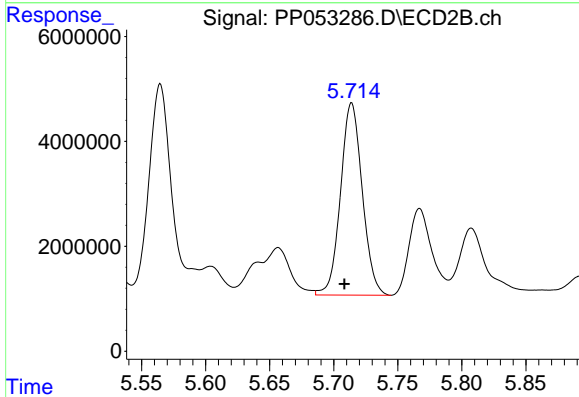
Time 5.45 5.50 5.55 5.60 5.65 5.70



#27 AR-1254-2

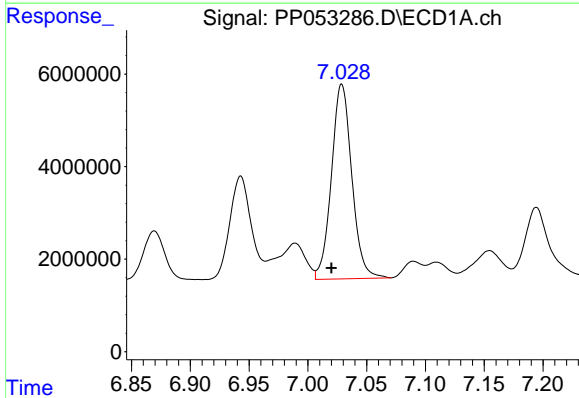
R.T.: 6.661 min
 Delta R.T.: 0.009 min
 Response: 53289917
 Conc: 507.28 ng/ml

Instrument :
 ECD_P
 ClientSampleId :



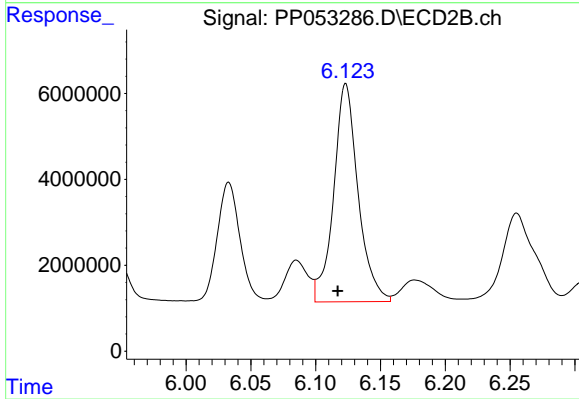
#27 AR-1254-2

R.T.: 5.714 min
 Delta R.T.: 0.006 min
 Response: 43252246
 Conc: 532.70 ng/ml



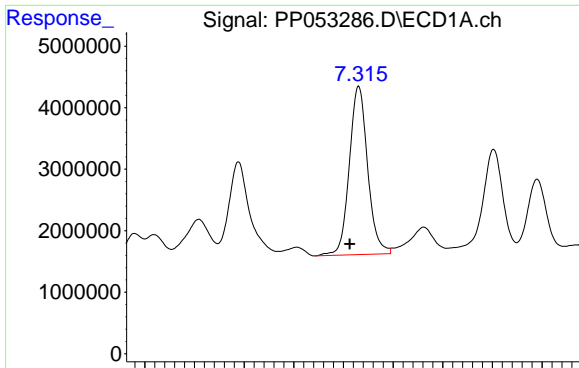
#28 AR-1254-3

R.T.: 7.029 min
 Delta R.T.: 0.009 min
 Response: 50720175
 Conc: 494.48 ng/ml



#28 AR-1254-3

R.T.: 6.123 min
 Delta R.T.: 0.006 min
 Response: 66672080
 Conc: 524.50 ng/ml

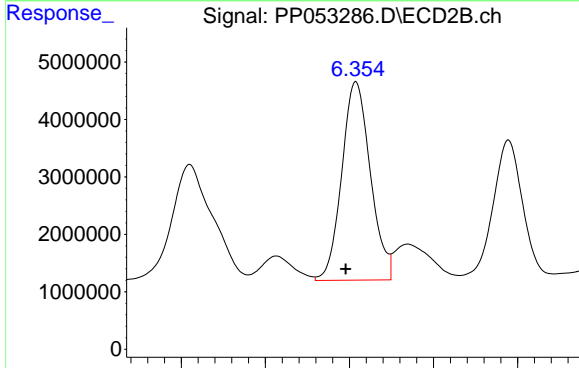


#29 AR-1254-4

R.T.: 7.315 min
 Delta R.T.: 0.009 min
 Response: 35134310
 Conc: 505.03 ng/ml

Instrument :
 ECD_P
 ClientSampleId :

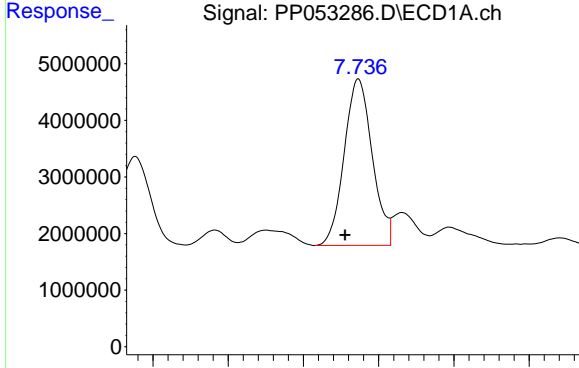
Time 7.10 7.15 7.20 7.25 7.30 7.35 7.40 7.45 7.50



#29 AR-1254-4

R.T.: 6.354 min
 Delta R.T.: 0.006 min
 Response: 40878957
 Conc: 518.42 ng/ml

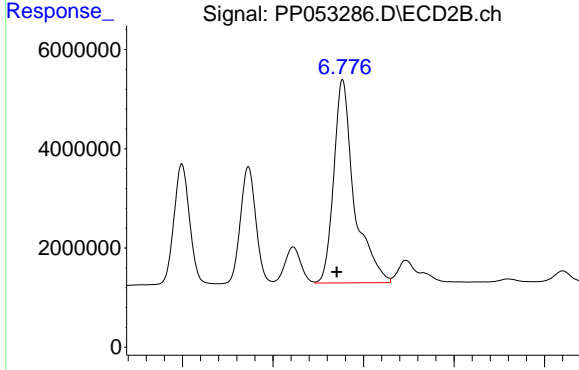
Time 6.25 6.30 6.35 6.40 6.45



#30 AR-1254-5

R.T.: 7.737 min
 Delta R.T.: 0.009 min
 Response: 38134061
 Conc: 481.45 ng/ml

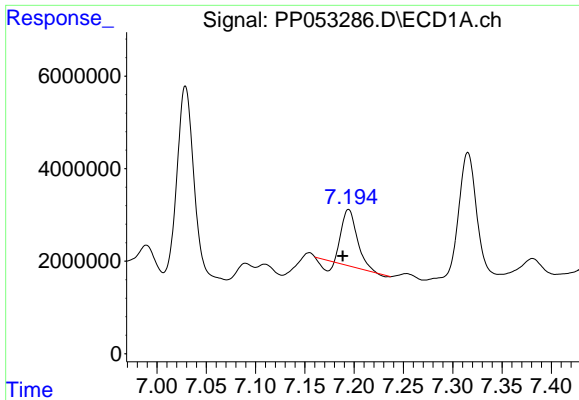
Time 7.60 7.65 7.70 7.75 7.80 7.85



#30 AR-1254-5

R.T.: 6.777 min
 Delta R.T.: 0.007 min
 Response: 64430825
 Conc: 510.10 ng/ml

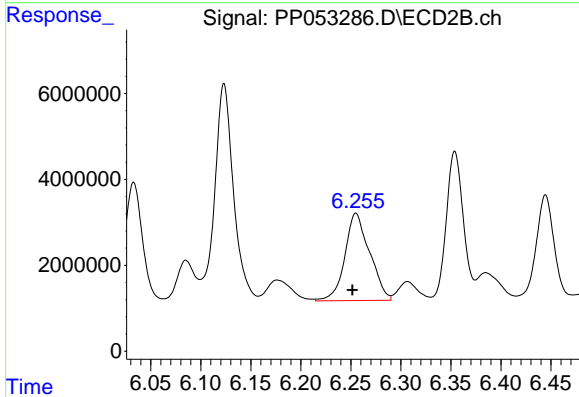
Time 6.60 6.70 6.80 6.90 7.00



#31 AR-1260-1

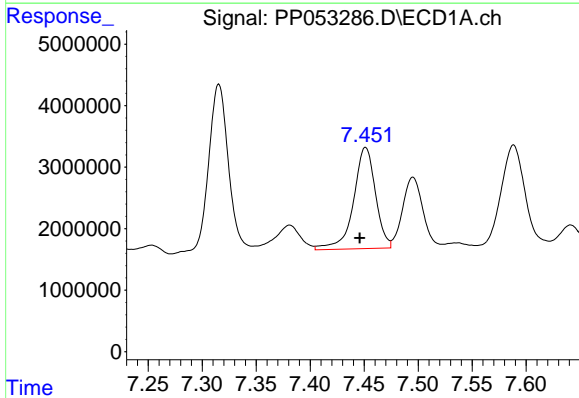
R.T.: 7.194 min
 Delta R.T.: 0.006 min
 Response: 11956612
 Conc: 146.22 ng/ml

Instrument :
 ECD_P
 ClientSampleId :



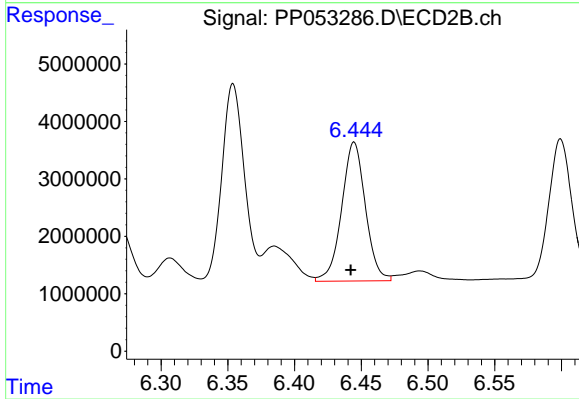
#31 AR-1260-1

R.T.: 6.255 min
 Delta R.T.: 0.003 min
 Response: 35053113
 Conc: 382.39 ng/ml



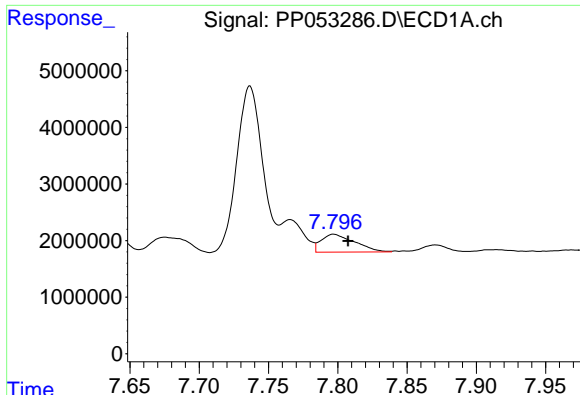
#32 AR-1260-2

R.T.: 7.451 min
 Delta R.T.: 0.005 min
 Response: 23289764
 Conc: 251.49 ng/ml



#32 AR-1260-2

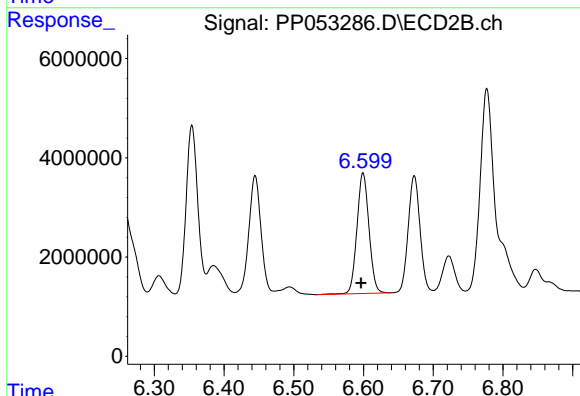
R.T.: 6.445 min
 Delta R.T.: 0.002 min
 Response: 29938856
 Conc: 260.17 ng/ml



#33 AR-1260-3

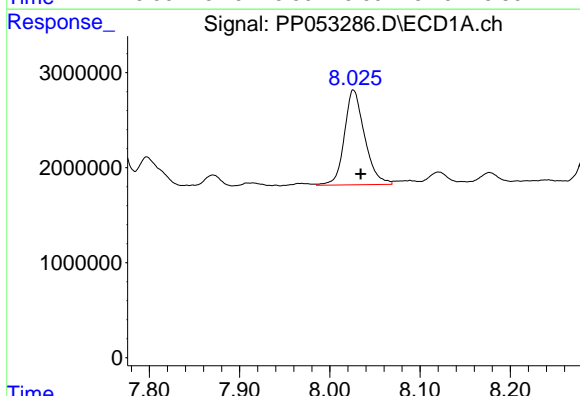
R.T.: 7.797 min
 Delta R.T.: -0.010 min
 Response: 5332987
 Conc: 85.51 ng/ml

Instrument :
 ECD_P
 ClientSampleId :



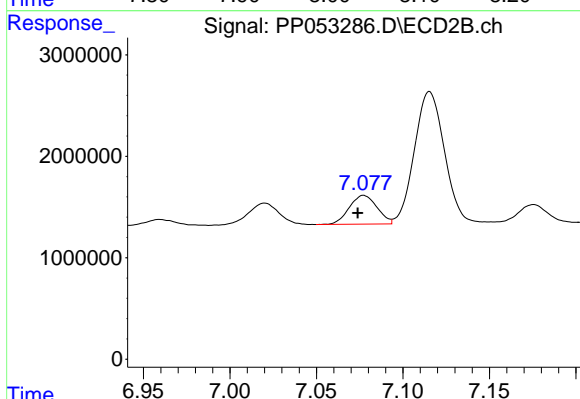
#33 AR-1260-3

R.T.: 6.599 min
 Delta R.T.: 0.003 min
 Response: 29175948
 Conc: 271.89 ng/ml



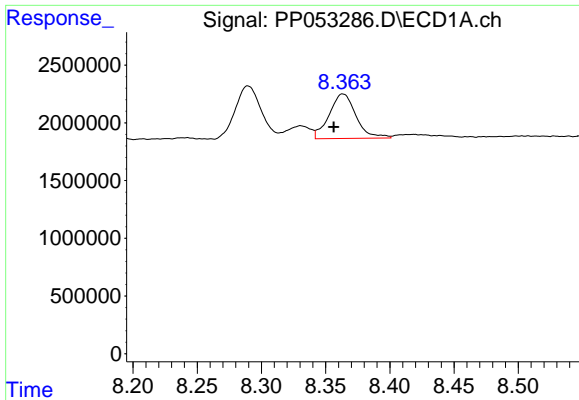
#34 AR-1260-4

R.T.: 8.026 min
 Delta R.T.: -0.008 min
 Response: 15544745
 Conc: 207.50 ng/ml



#34 AR-1260-4

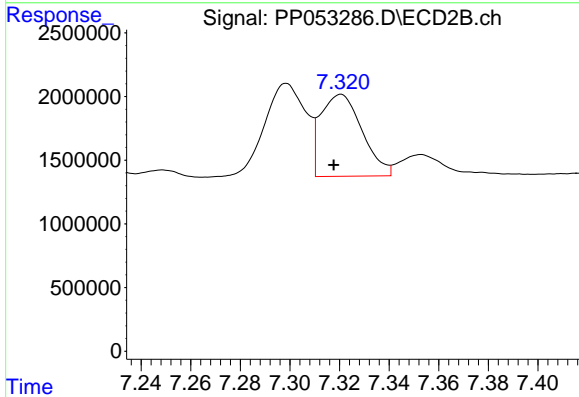
R.T.: 7.077 min
 Delta R.T.: 0.003 min
 Response: 3169416
 Conc: 38.31 ng/ml



#35 AR-1260-5

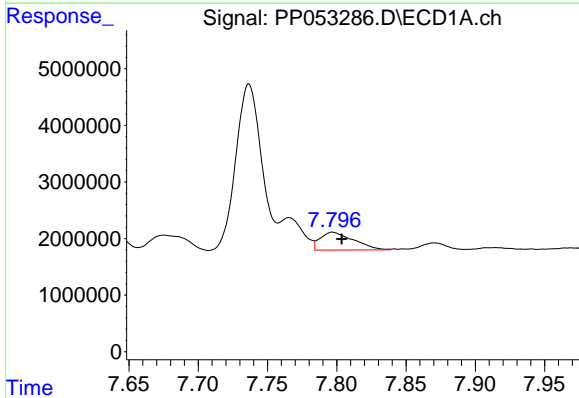
R.T.: 8.364 min
 Delta R.T.: 0.007 min
 Response: 5610403
 Conc: 44.33 ng/ml

Instrument :
 ECD_P
 ClientSampleId :



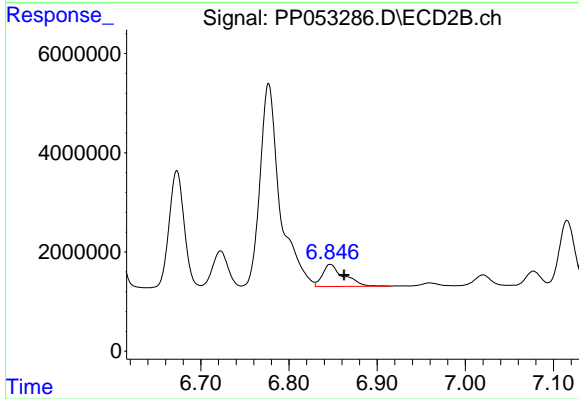
#35 AR-1260-5

R.T.: 7.321 min
 Delta R.T.: 0.003 min
 Response: 7482661
 Conc: 39.52 ng/ml



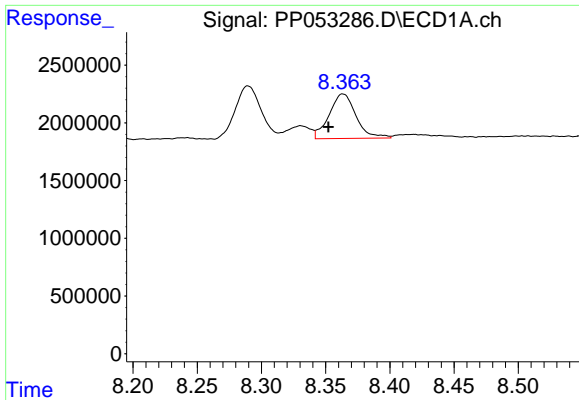
#36 AR-1262-1

R.T.: 7.797 min
 Delta R.T.: -0.006 min
 Response: 5332987
 Conc: 55.50 ng/ml



#36 AR-1262-1

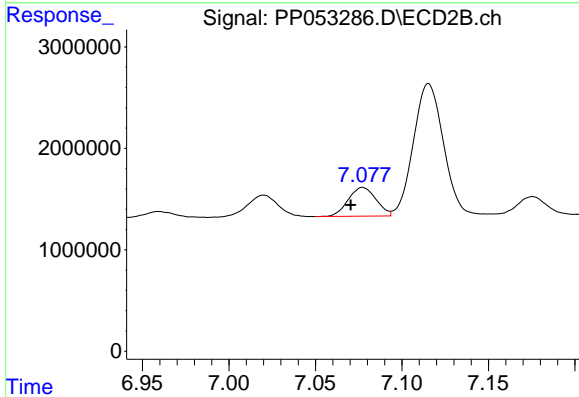
R.T.: 6.847 min
 Delta R.T.: -0.016 min
 Response: 7514912
 Conc: 142.71 ng/ml



#37 AR-1262-2

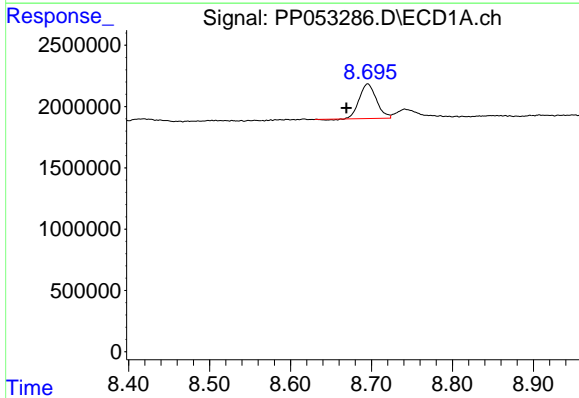
R.T.: 8.364 min
 Delta R.T.: 0.011 min
 Response: 5610403
 Conc: 37.06 ng/ml

Instrument :
 ECD_P
 ClientSampleId :



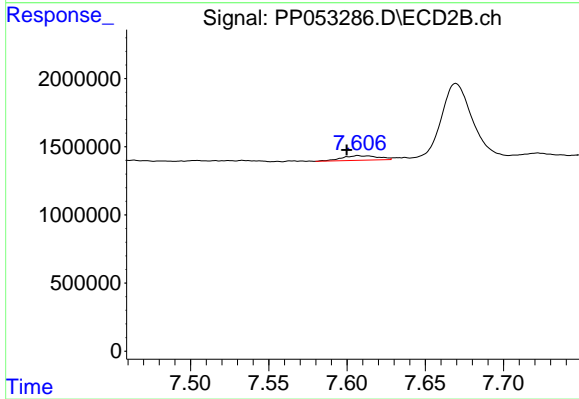
#37 AR-1262-2

R.T.: 7.077 min
 Delta R.T.: 0.007 min
 Response: 3169416
 Conc: 27.33 ng/ml



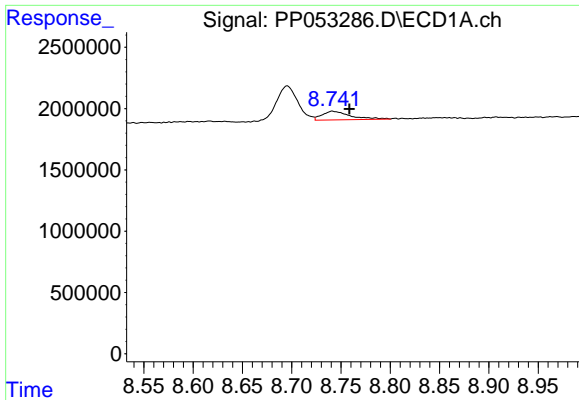
#38 AR-1262-3

R.T.: 8.695 min
 Delta R.T.: 0.026 min
 Response: 4104635
 Conc: 39.62 ng/ml



#38 AR-1262-3

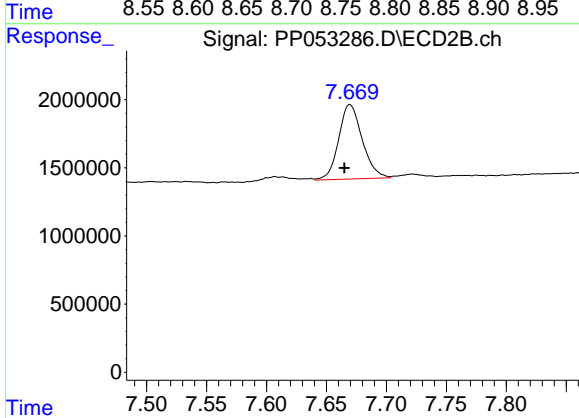
R.T.: 7.607 min
 Delta R.T.: 0.007 min
 Response: 538311
 Conc: 5.88 ng/ml



#39 AR-1262-4

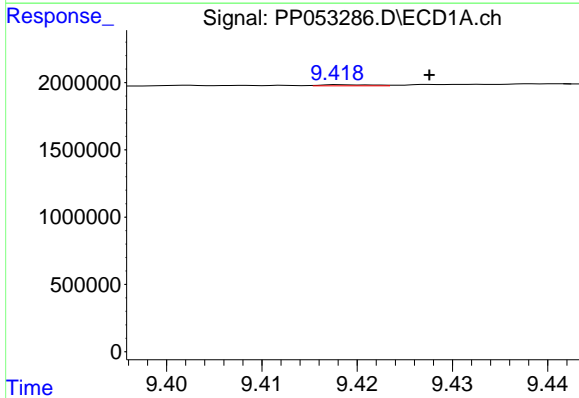
R.T.: 8.741 min
 Delta R.T.: -0.017 min
 Response: 1396350
 Conc: 17.27 ng/ml

Instrument :
 ECD_P
 ClientSampleId :



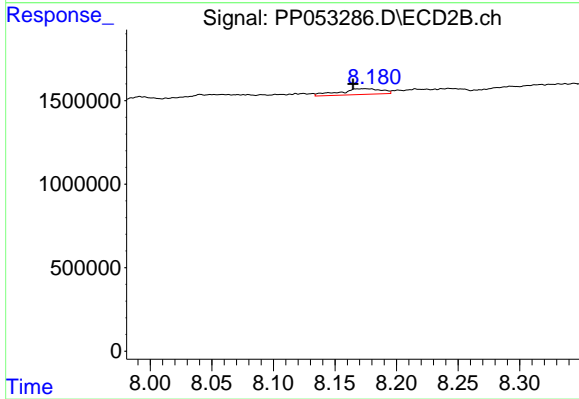
#39 AR-1262-4

R.T.: 7.670 min
 Delta R.T.: 0.005 min
 Response: 7473628
 Conc: 45.57 ng/ml



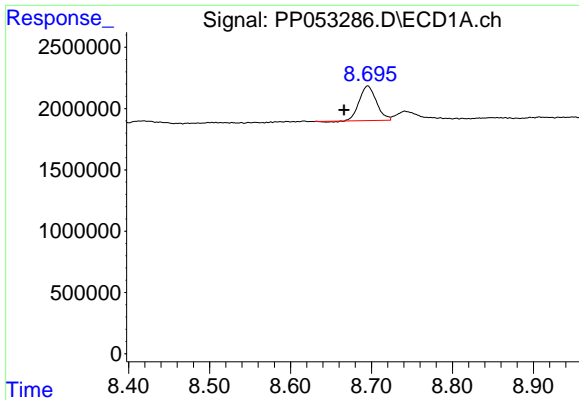
#40 AR-1262-5

R.T.: 9.419 min
 Delta R.T.: -0.008 min
 Response: 29412
 Conc: 0.58 ng/ml



#40 AR-1262-5

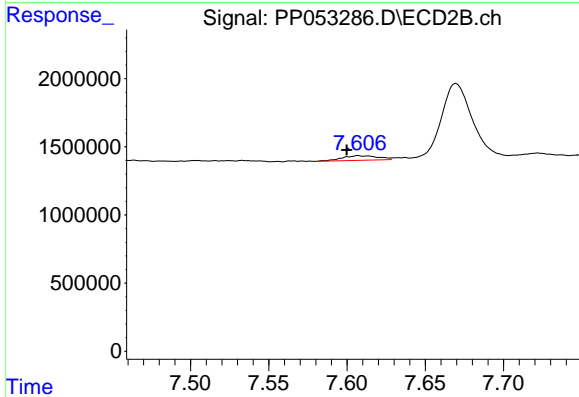
R.T.: 8.174 min
 Delta R.T.: 0.009 min
 Response: 824842
 Conc: 10.86 ng/ml



#41 AR-1268-1

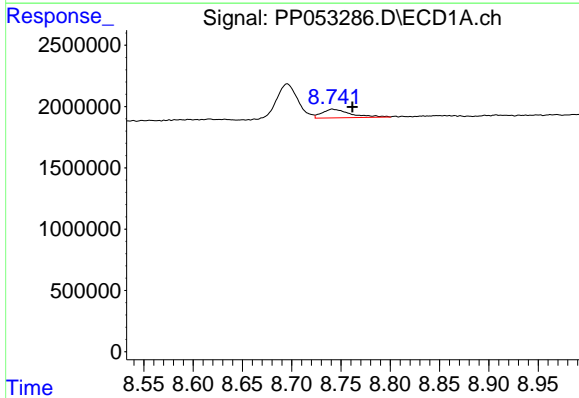
R.T.: 8.695 min
 Delta R.T.: 0.029 min
 Response: 4104635
 Conc: 21.66 ng/ml

Instrument :
 ECD_P
 ClientSampleId :



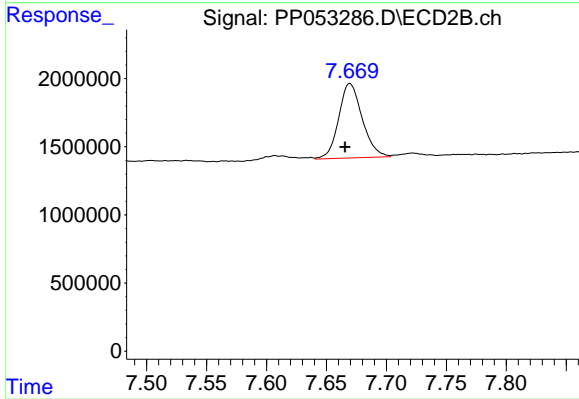
#41 AR-1268-1

R.T.: 7.607 min
 Delta R.T.: 0.007 min
 Response: 538311
 Conc: 2.01 ng/ml



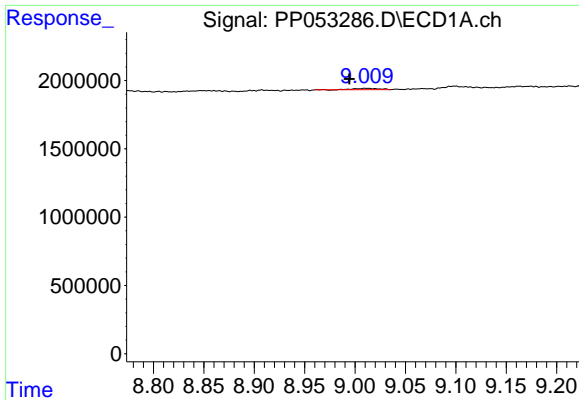
#42 AR-1268-2

R.T.: 8.741 min
 Delta R.T.: -0.020 min
 Response: 1396350
 Conc: 8.23 ng/ml



#42 AR-1268-2

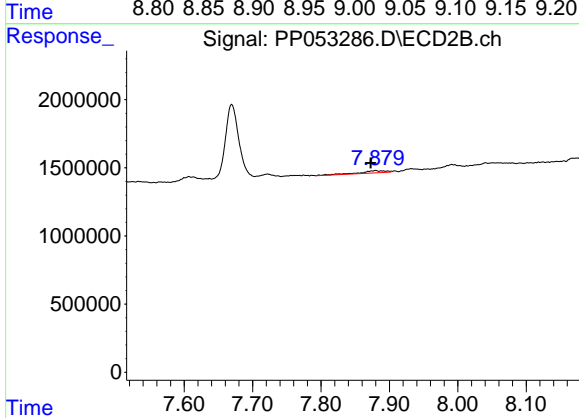
R.T.: 7.670 min
 Delta R.T.: 0.004 min
 Response: 7473628
 Conc: 31.30 ng/ml



#43 AR-1268-3

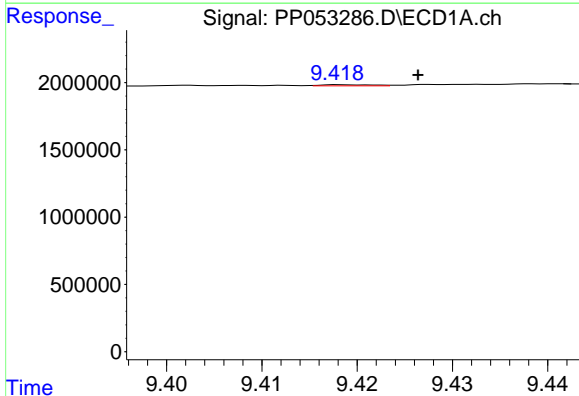
R.T.: 9.011 min
 Delta R.T.: 0.016 min
 Response: 149436
 Conc: 1.00 ng/ml

Instrument :
 ECD_P
 ClientSampleId :



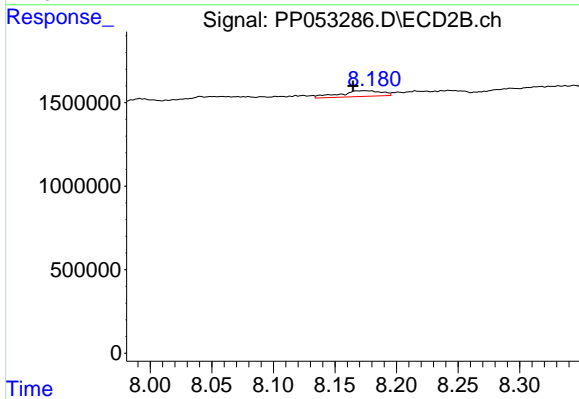
#43 AR-1268-3

R.T.: 7.880 min
 Delta R.T.: 0.007 min
 Response: 427586
 Conc: 2.08 ng/ml



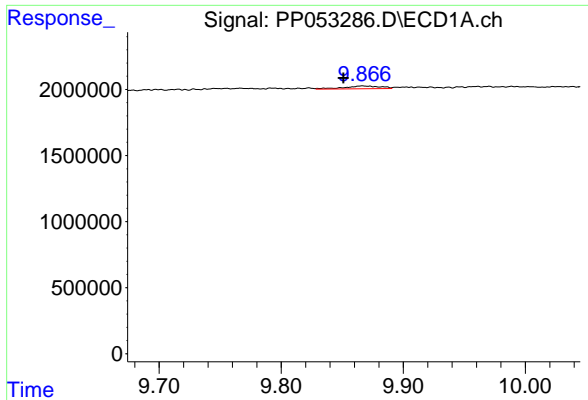
#44 AR-1268-4

R.T.: 9.419 min
 Delta R.T.: -0.007 min
 Response: 29412
 Conc: 0.53 ng/ml



#44 AR-1268-4

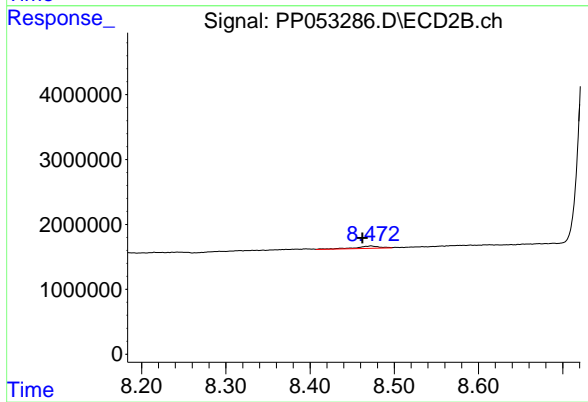
R.T.: 8.174 min
 Delta R.T.: 0.009 min
 Response: 824842
 Conc: 10.02 ng/ml



#45 AR-1268-5

R.T.: 9.867 min
 Delta R.T.: 0.016 min
 Response: 434695
 Conc: 0.94 ng/ml

Instrument :
 ECD_P
 ClientSampleId :



#45 AR-1268-5

R.T.: 8.472 min
 Delta R.T.: 0.010 min
 Response: 710765
 Conc: 1.07 ng/ml