

Data Path : Z:\pestpcbsrv\HPCHEM1\ECD_P\Data\PP111122\
 Data File : PP053298.D
 Signal(s) : Signal #1: ECD1A.ch Signal #2: ECD2B.ch
 Acq On : 11 Nov 2022 17:20
 Operator : YP\AJ
 Sample : AR1660CCC500
 Misc :
 ALS Vial : 3 Sample Multiplier: 1

Instrument :
 ECD_P
 ClientSampleId :

Integration File signal 1: autoint1.e
 Integration File signal 2: autoint2.e
 Quant Time: Nov 11 20:23:33 2022
 Quant Method : Z:\pestpcbsrv\HPCHEM1\ECD_P\methods\PP110822.M
 Quant Title : GC EXTRACTABLES
 QLast Update : Wed Nov 09 05:50:05 2022
 Response via : Initial Calibration
 Integrator: ChemStation

Volume Inj. : 2 µl
 Signal #1 Phase : ZB-MR1 Signal #2 Phase: ZB-MR2
 Signal #1 Info : 30Mx0.32mmx 0.50µ Signal #2 Info : 30M x 0.32mm x 0.25µm

Compound	RT#1	RT#2	Resp#1	Resp#2	ng/ml	ng/ml

System Monitoring Compounds						
1) SA Tetrachlo...	4.404	3.648	106.0E6	88788352	55.138	59.025
2) SA Decachlor...	10.209	8.730	74904569	97117340	55.241	51.814
Target Compounds						
3) L1 AR-1016-1	5.577	4.748	32927773	31855921	529.302	567.982
4) L1 AR-1016-2	5.600	4.767	48531670	44384605	525.081	571.834
5) L1 AR-1016-3	5.662	4.946	29820188	23991430	526.891	571.367
6) L1 AR-1016-4	5.762	4.988	24144548	19066346	530.789	545.522
7) L1 AR-1016-5	6.058	5.205	23754698	25971886	524.793	571.814
8) L2 AR-1221-1	4.608	3.863	3679028	3260126	163.690	170.745
9) L2 AR-1221-2	4.700	3.951	5220515	4766387	314.183	325.394
10) L2 AR-1221-3	4.776	4.028	18758219	17590334	372.458	391.649
11) L3 AR-1232-1	4.776	4.028	18758219	17590334	489.181	520.527
12) L3 AR-1232-2	5.308	4.767	25523878	44384605	1134.004	1275.200
13) L3 AR-1232-3	5.600	4.946	48531670	23991430	1195.724	1285.919
14) L3 AR-1232-4	5.762	5.031	24144548	24162108	1196.331	1372.558
15) L3 AR-1232-5	5.853	5.205	21465172	25971886	1294.564	1304.978
16) L4 AR-1242-1	5.577	4.748	32927773	31855921	675.668	722.537
17) L4 AR-1242-2	5.600	4.767	48531670	44384605	673.165	717.662
18) L4 AR-1242-3	5.662	4.946	29820188	23991430	665.883	722.388
19) L4 AR-1242-4	5.762	5.031	24144548	24162108	671.364	691.125
20) L4 AR-1242-5	6.503	5.562	4651307	21257467	127.400	485.431 #
21) L5 AR-1248-1	5.577	4.748	32927773	31855921	882.845	929.121
22) L5 AR-1248-2	5.853	4.988	21465172	19066346	392.325	397.031
23) L5 AR-1248-3	6.058	5.031	23754698	24162108	398.644	487.606
24) L5 AR-1248-4	6.463	5.205	4334291	25971886	70.252	439.763 #
25) L5 AR-1248-5	6.503	5.603	4651307	3705104	77.108	67.348
26) L6 AR-1254-1	6.437	5.562	19287674	21257467	272.824	234.499
27) L6 AR-1254-2	6.656	5.711	19484478	19832552	185.479	244.259 #
28) L6 AR-1254-3	7.025	6.102f	10313831	7926271	100.551	62.355 #
29) L6 AR-1254-4	7.312	6.351	6702111	3539027	96.338	44.881 #
30) L6 AR-1254-5	7.732	6.773	56564167	72852773	714.133	576.780
31) L7 AR-1260-1	7.190	6.252	42456976	50661349	519.209	552.653
32) L7 AR-1260-2	7.448	6.442	48466286	62234829	523.348	540.831
33) L7 AR-1260-3	7.809	6.597	32773953	58944378	525.490	549.301
34) L7 AR-1260-4	8.036	7.074	39618416	45637698	528.857	551.620
35) L7 AR-1260-5	8.359	7.318	70484033	104.6E6	556.894	552.363
36) L8 AR-1262-1	7.809	6.866	32773953	24958028	341.079	473.959 #
37) L8 AR-1262-2	8.359	7.074	70484033	45637698	465.637	393.550
38) L8 AR-1262-3	8.689f	7.603	45450964	21209039	438.694	231.544 #
39) L8 AR-1262-4	8.767	7.668	11093893	73942866	137.202	450.849 #
40) L8 AR-1262-5	9.436	8.169	16312340	23387366	320.830	307.861
41) L9 AR-1268-1	8.689f	7.603	45450964	21209039	239.884	79.351 #

Data Path : Z:\pestpcbsrv\HPCHEM1\ECD_P\Data\PP111122\
 Data File : PP053298.D
 Signal(s) : Signal #1: ECD1A.ch Signal #2: ECD2B.ch
 Acq On : 11 Nov 2022 17:20
 Operator : YP\AJ
 Sample : AR1660CCC500
 Misc :
 ALS Vial : 3 Sample Multiplier: 1

Instrument :
 ECD_P
 ClientSampleId :

Integration File signal 1: autoint1.e
 Integration File signal 2: autoint2.e
 Quant Time: Nov 11 20:23:33 2022
 Quant Method : Z:\pestpcbsrv\HPCHEM1\ECD_P\methods\PP110822.M
 Quant Title : GC EXTRACTABLES
 QLast Update : Wed Nov 09 05:50:05 2022
 Response via : Initial Calibration
 Integrator: ChemStation

Volume Inj. : 2 µl
 Signal #1 Phase : ZB-MR1 Signal #2 Phase: ZB-MR2
 Signal #1 Info : 30Mx0.32mmx 0.50µ Signal #2 Info : 30M x 0.32mm x 0.25µm

	Compound	RT#1	RT#2	Resp#1	Resp#2	ng/ml	ng/ml
42)	L9 AR-1268-2	8.767	7.668	11093893	73942866	65.402	309.674 #
43)	L9 AR-1268-3	8.999	7.877	1277848	1775591	8.534	8.635
44)	L9 AR-1268-4	9.436	8.169	16312340	23387366	291.439	284.126
45)	L9 AR-1268-5	9.860	8.468	6441329	8097292	13.983	12.201

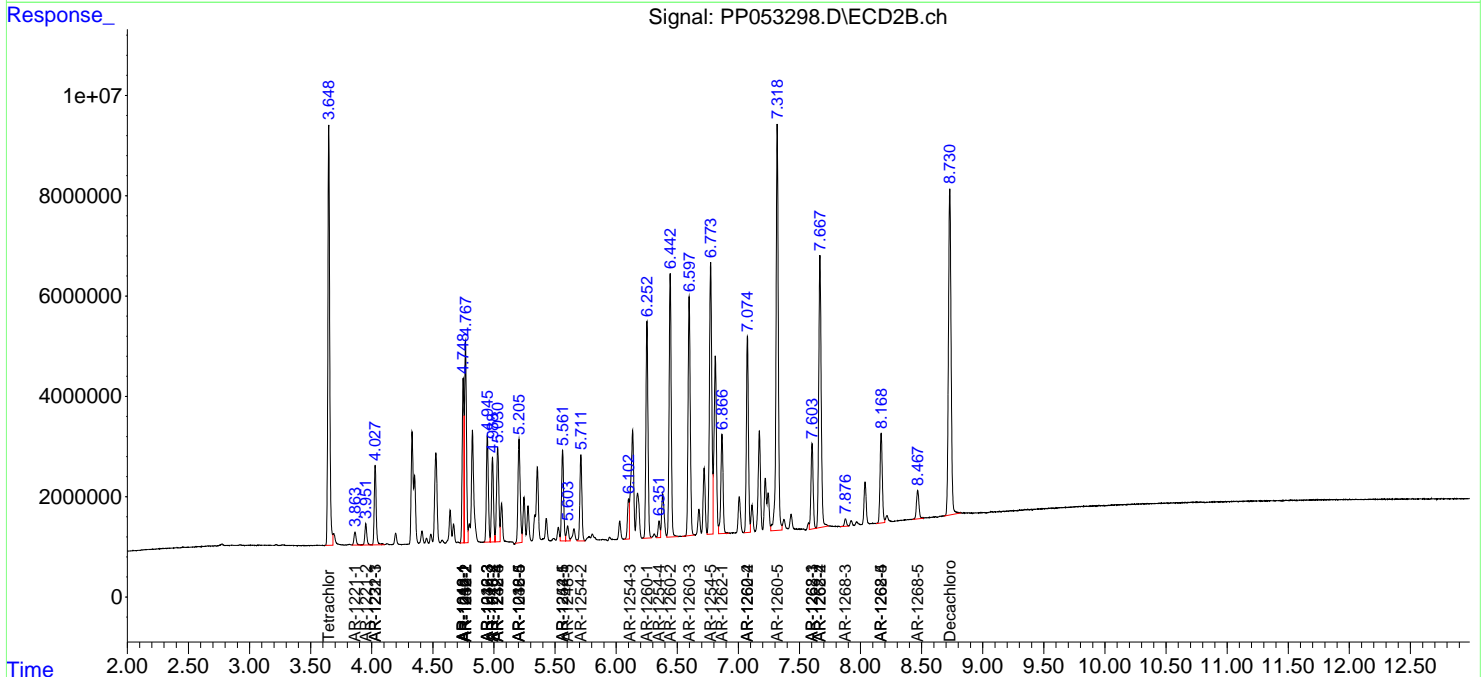
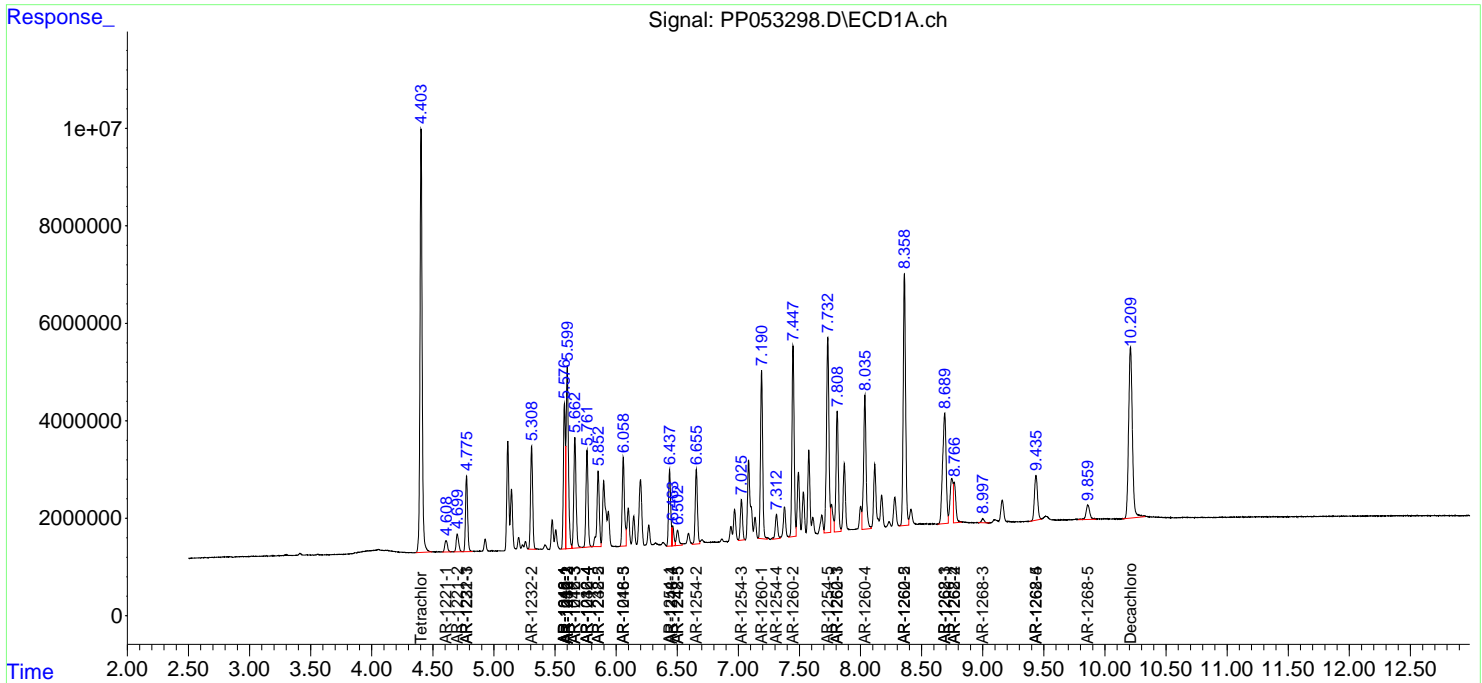
(f)=RT Delta > 1/2 Window (#)=Amounts differ by > 25% (m)=manual int.

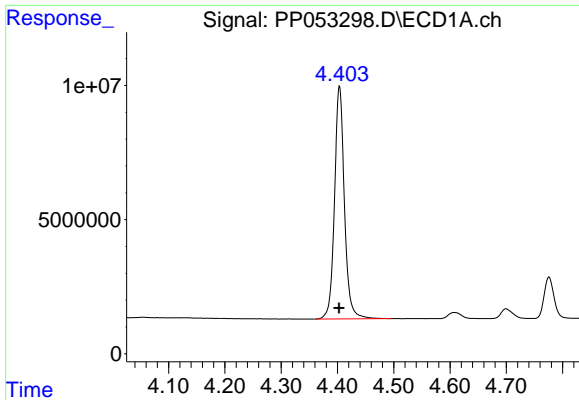
Data Path : Z:\pestpcbsrv\HPCHEM1\ECD_P\Data\PP111122\
 Data File : PP053298.D
 Signal(s) : Signal #1: ECD1A.ch Signal #2: ECD2B.ch
 Acq On : 11 Nov 2022 17:20
 Operator : YP\AJ
 Sample : AR1660CCC500
 Misc :
 ALS Vial : 3 Sample Multiplier: 1

Instrument :
 ECD_P
 ClientSampleId :

Integration File signal 1: autoint1.e
 Integration File signal 2: autoint2.e
 Quant Time: Nov 11 20:23:33 2022
 Quant Method : Z:\pestpcbsrv\HPCHEM1\ECD_P\methods\PP110822.M
 Quant Title : GC EXTRACTABLES
 QLast Update : Wed Nov 09 05:50:05 2022
 Response via : Initial Calibration
 Integrator: ChemStation

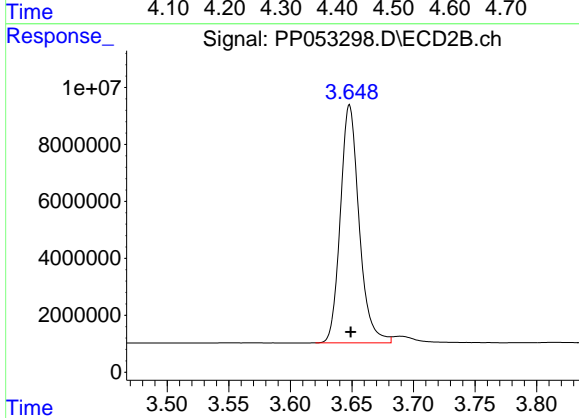
Volume Inj. : 2 µl
 Signal #1 Phase : ZB-MR1 Signal #2 Phase: ZB-MR2
 Signal #1 Info : 30Mx0.32mmx 0.50µ Signal #2 Info : 30M x 0.32mm x 0.25µm



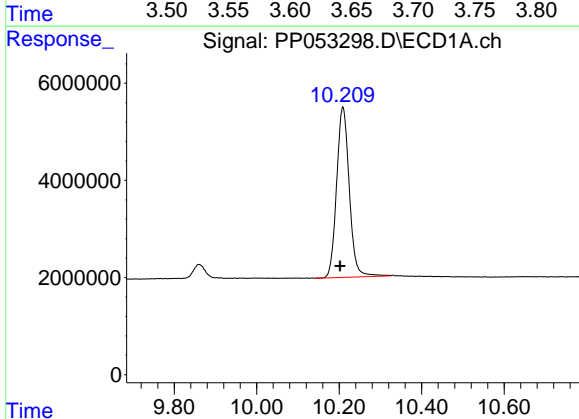


#1 Tetrachloro-m-xylene
 R.T.: 4.404 min
 Delta R.T.: 0.000 min
 Response: 105993512
 Conc: 55.14 ng/ml

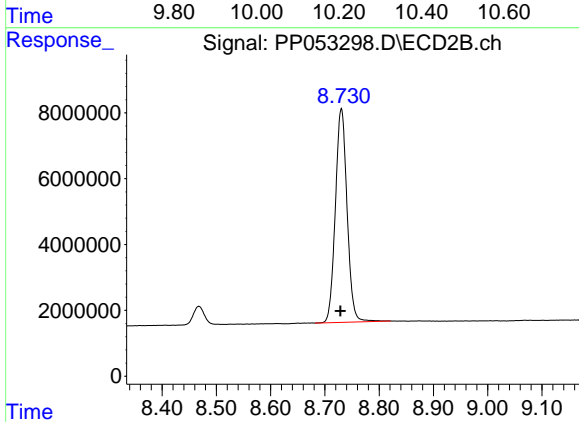
Instrument :
 ECD_P
 ClientSampleId :



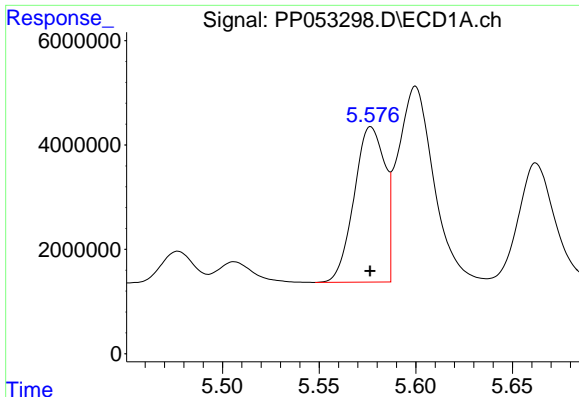
#1 Tetrachloro-m-xylene
 R.T.: 3.648 min
 Delta R.T.: 0.000 min
 Response: 88788352
 Conc: 59.02 ng/ml



#2 Decachlorobiphenyl
 R.T.: 10.209 min
 Delta R.T.: 0.006 min
 Response: 74904569
 Conc: 55.24 ng/ml



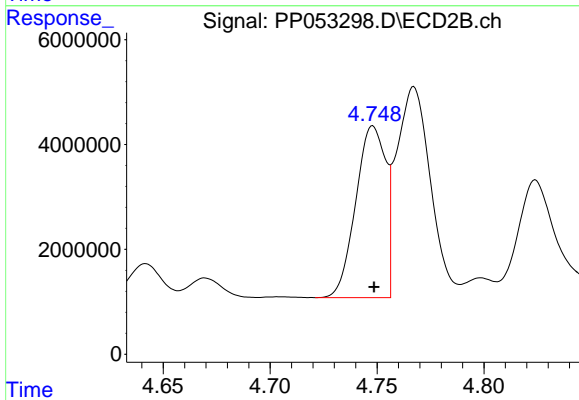
#2 Decachlorobiphenyl
 R.T.: 8.730 min
 Delta R.T.: 0.002 min
 Response: 97117340
 Conc: 51.81 ng/ml



#3 AR-1016-1

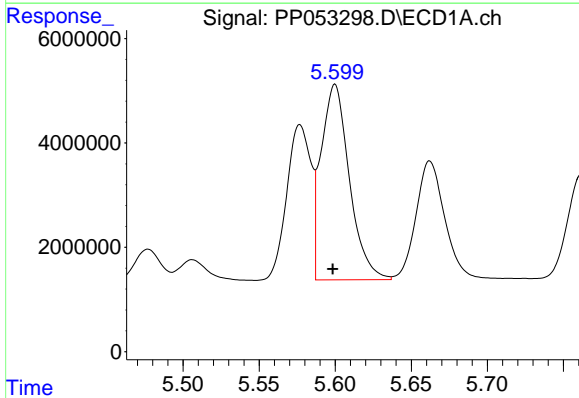
R.T.: 5.577 min
 Delta R.T.: 0.000 min
 Response: 32927773
 Conc: 529.30 ng/ml

Instrument :
 ECD_P
 ClientSampleId :



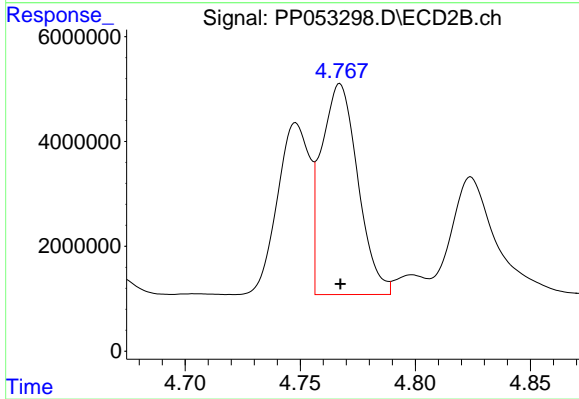
#3 AR-1016-1

R.T.: 4.748 min
 Delta R.T.: 0.000 min
 Response: 31855921
 Conc: 567.98 ng/ml



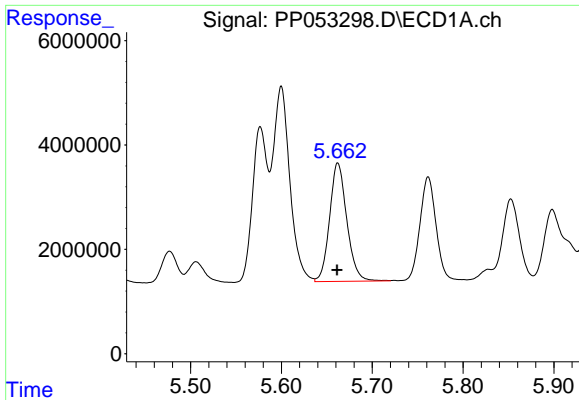
#4 AR-1016-2

R.T.: 5.600 min
 Delta R.T.: 0.001 min
 Response: 48531670
 Conc: 525.08 ng/ml



#4 AR-1016-2

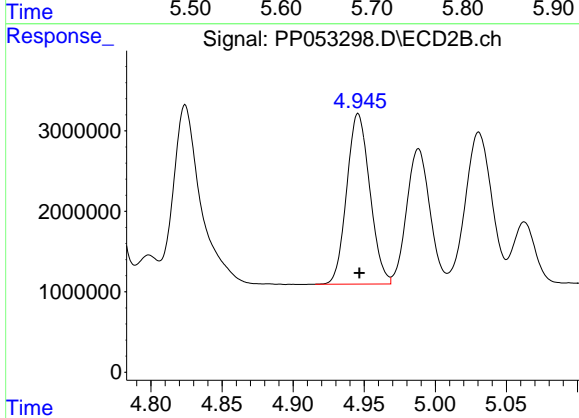
R.T.: 4.767 min
 Delta R.T.: 0.000 min
 Response: 44384605
 Conc: 571.83 ng/ml



#5 AR-1016-3

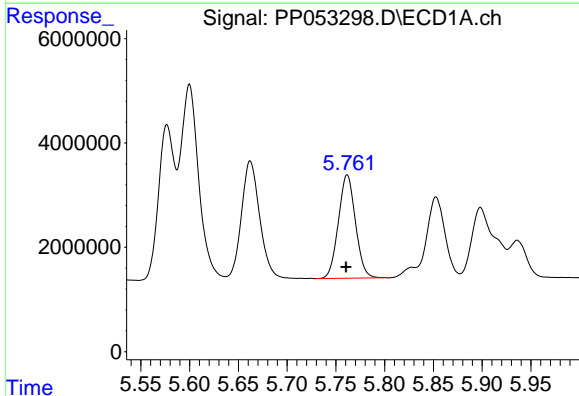
R.T.: 5.662 min
 Delta R.T.: 0.000 min
 Response: 29820188
 Conc: 526.89 ng/ml

Instrument :
 ECD_P
 ClientSampleId :



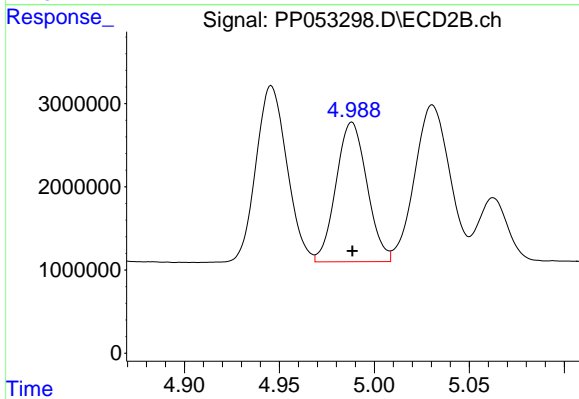
#5 AR-1016-3

R.T.: 4.946 min
 Delta R.T.: 0.000 min
 Response: 23991430
 Conc: 571.37 ng/ml



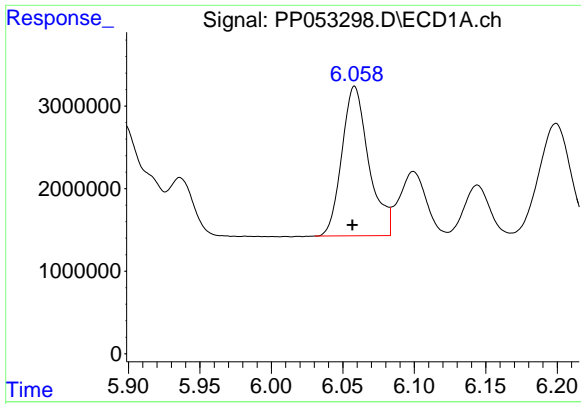
#6 AR-1016-4

R.T.: 5.762 min
 Delta R.T.: 0.001 min
 Response: 24144548
 Conc: 530.79 ng/ml



#6 AR-1016-4

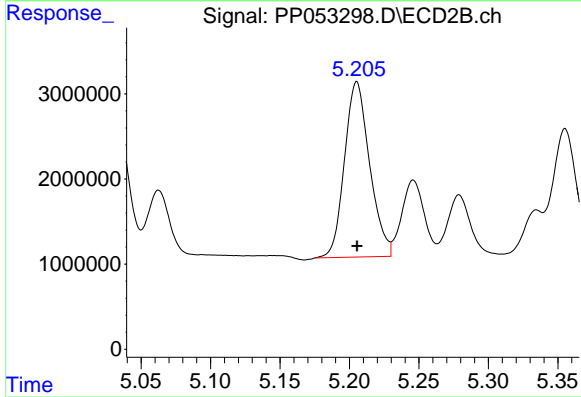
R.T.: 4.988 min
 Delta R.T.: 0.000 min
 Response: 19066346
 Conc: 545.52 ng/ml



#7 AR-1016-5

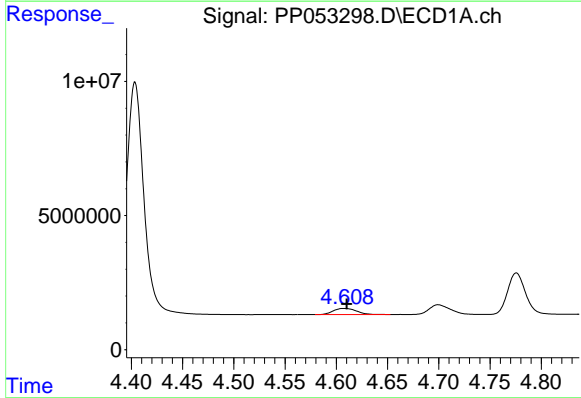
R.T.: 6.058 min
 Delta R.T.: 0.002 min
 Response: 23754698
 Conc: 524.79 ng/ml

Instrument :
 ECD_P
 ClientSampleId :



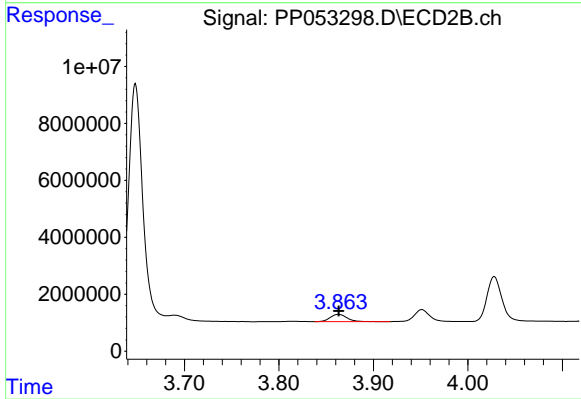
#7 AR-1016-5

R.T.: 5.205 min
 Delta R.T.: 0.000 min
 Response: 25971886
 Conc: 571.81 ng/ml



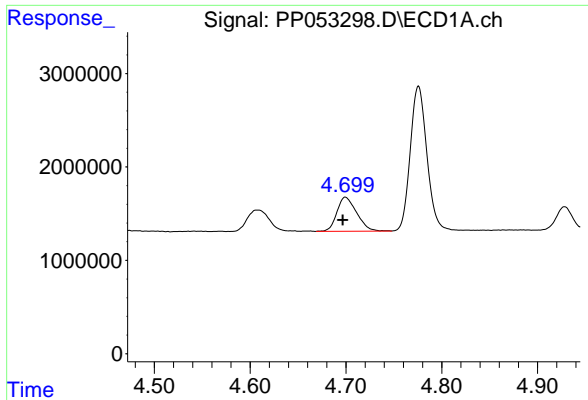
#8 AR-1221-1

R.T.: 4.608 min
 Delta R.T.: -0.002 min
 Response: 3679028
 Conc: 163.69 ng/ml



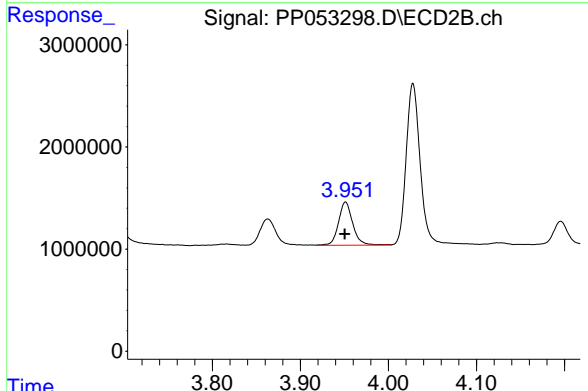
#8 AR-1221-1

R.T.: 3.863 min
 Delta R.T.: 0.000 min
 Response: 3260126
 Conc: 170.74 ng/ml

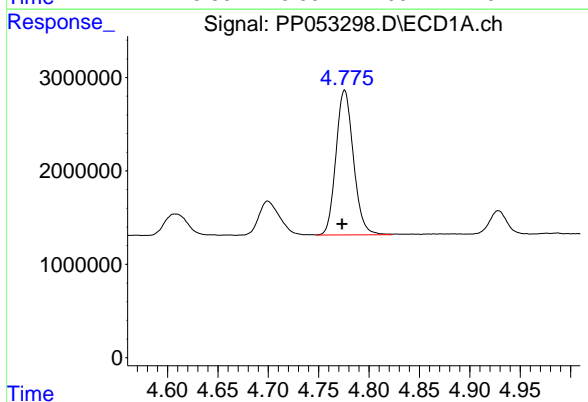


#9 AR-1221-2
R.T.: 4.700 min
Delta R.T.: 0.003 min
Response: 5220515
Conc: 314.18 ng/ml

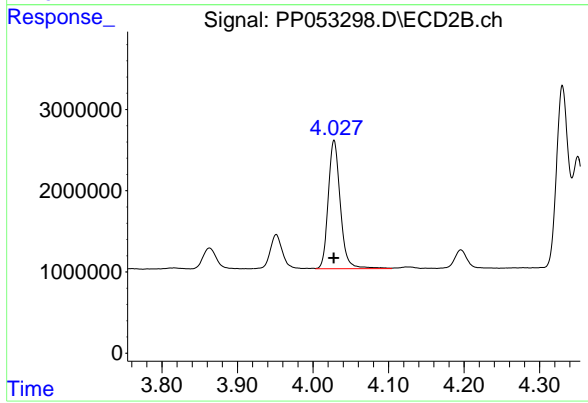
Instrument :
ECD_P
ClientSampleId :



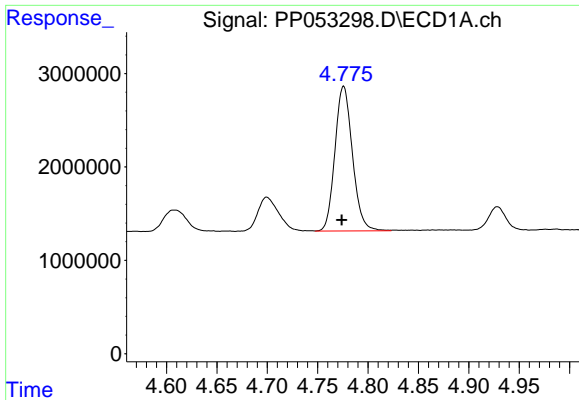
#9 AR-1221-2
R.T.: 3.951 min
Delta R.T.: 0.000 min
Response: 4766387
Conc: 325.39 ng/ml



#10 AR-1221-3
R.T.: 4.776 min
Delta R.T.: 0.003 min
Response: 18758219
Conc: 372.46 ng/ml



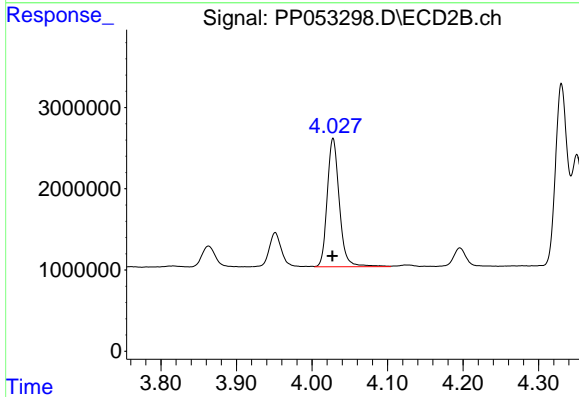
#10 AR-1221-3
R.T.: 4.028 min
Delta R.T.: 0.000 min
Response: 17590334
Conc: 391.65 ng/ml



#11 AR-1232-1

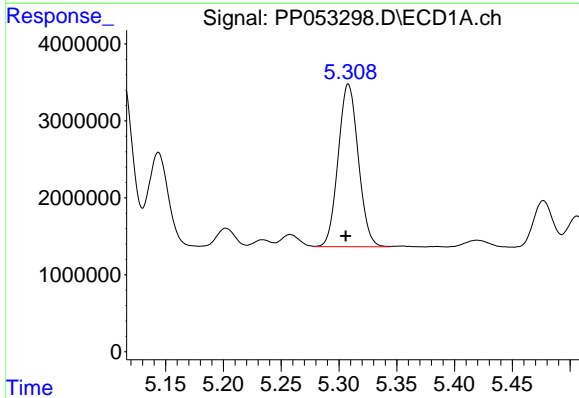
R.T.: 4.776 min
 Delta R.T.: 0.002 min
 Response: 18758219
 Conc: 489.18 ng/ml

Instrument :
 ECD_P
 ClientSampleId :



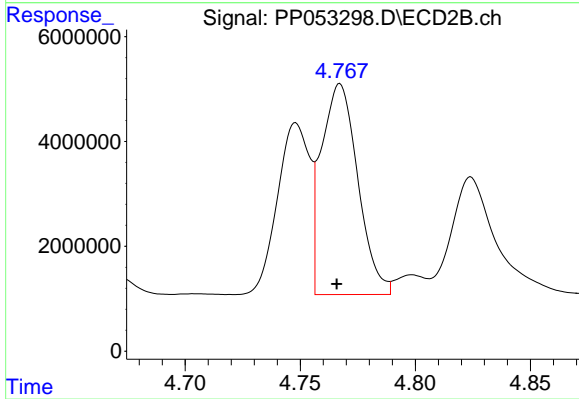
#11 AR-1232-1

R.T.: 4.028 min
 Delta R.T.: 0.000 min
 Response: 17590334
 Conc: 520.53 ng/ml



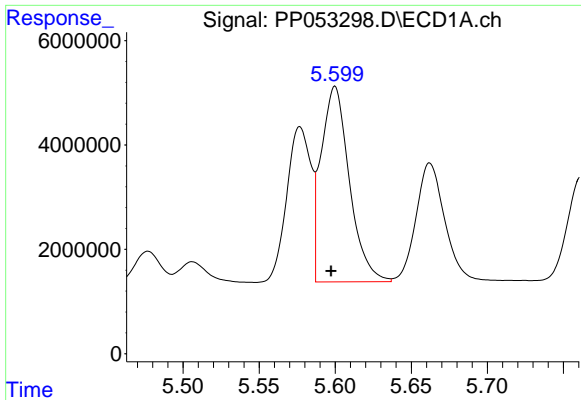
#12 AR-1232-2

R.T.: 5.308 min
 Delta R.T.: 0.002 min
 Response: 25523878
 Conc: 1134.00 ng/ml



#12 AR-1232-2

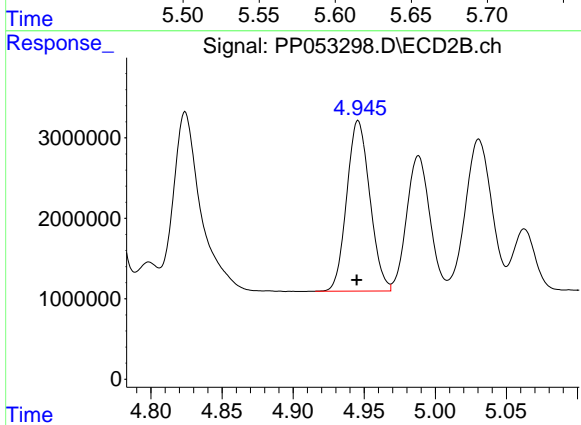
R.T.: 4.767 min
 Delta R.T.: 0.001 min
 Response: 44384605
 Conc: 1275.20 ng/ml



#13 AR-1232-3

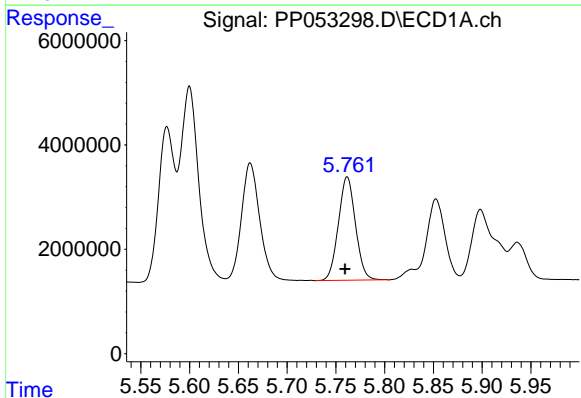
R.T.: 5.600 min
Delta R.T.: 0.003 min
Response: 48531670
Conc: 1195.72 ng/ml

Instrument :
ECD_P
ClientSampleId :



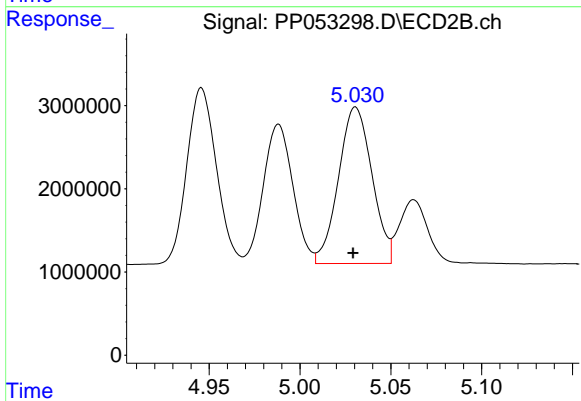
#13 AR-1232-3

R.T.: 4.946 min
Delta R.T.: 0.000 min
Response: 23991430
Conc: 1285.92 ng/ml



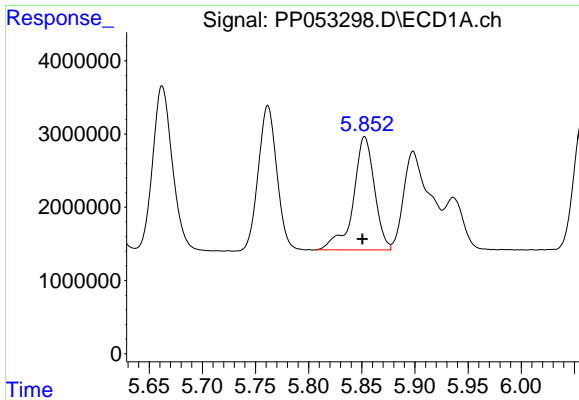
#14 AR-1232-4

R.T.: 5.762 min
Delta R.T.: 0.002 min
Response: 24144548
Conc: 1196.33 ng/ml



#14 AR-1232-4

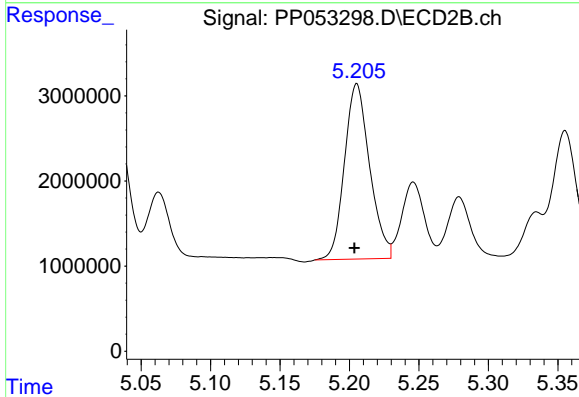
R.T.: 5.031 min
Delta R.T.: 0.001 min
Response: 24162108
Conc: 1372.56 ng/ml



#15 AR-1232-5

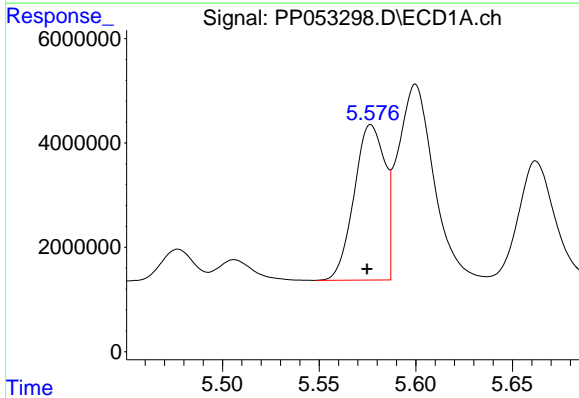
R.T.: 5.853 min
 Delta R.T.: 0.002 min
 Response: 21465172
 Conc: 1294.56 ng/ml

Instrument :
 ECD_P
 ClientSampleId :



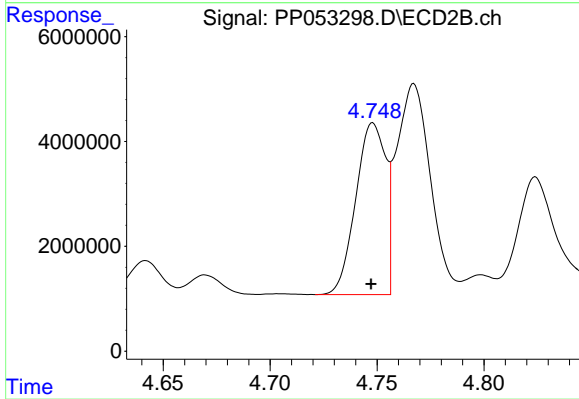
#15 AR-1232-5

R.T.: 5.205 min
 Delta R.T.: 0.002 min
 Response: 25971886
 Conc: 1304.98 ng/ml



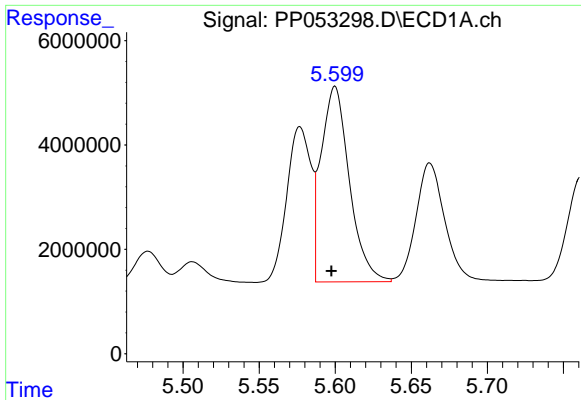
#16 AR-1242-1

R.T.: 5.577 min
 Delta R.T.: 0.002 min
 Response: 32927773
 Conc: 675.67 ng/ml



#16 AR-1242-1

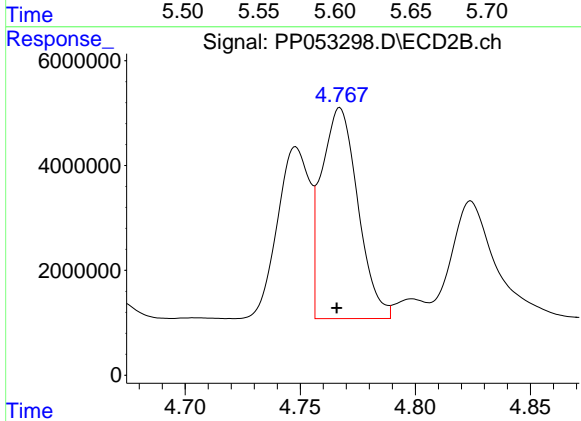
R.T.: 4.748 min
 Delta R.T.: 0.000 min
 Response: 31855921
 Conc: 722.54 ng/ml



#17 AR-1242-2

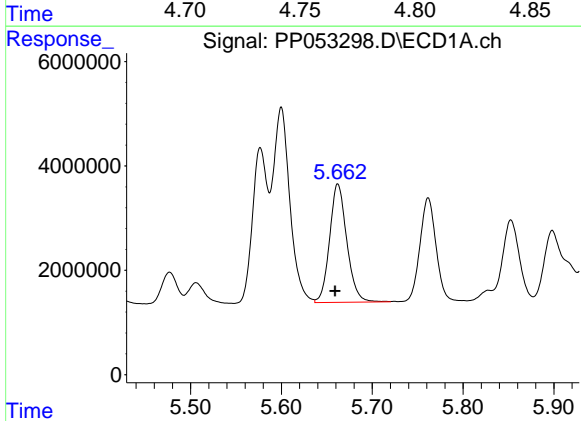
R.T.: 5.600 min
 Delta R.T.: 0.002 min
 Response: 48531670
 Conc: 673.16 ng/ml

Instrument :
 ECD_P
 ClientSampleId :



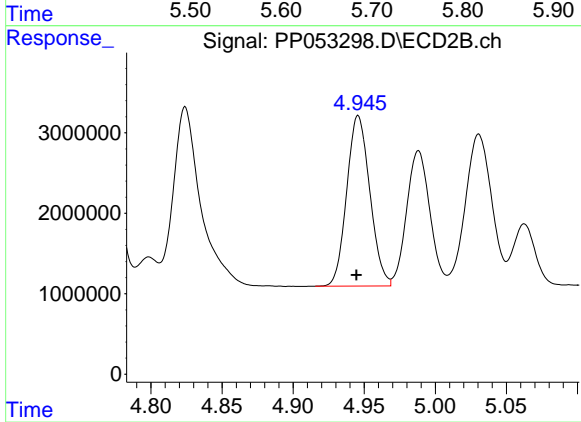
#17 AR-1242-2

R.T.: 4.767 min
 Delta R.T.: 0.001 min
 Response: 44384605
 Conc: 717.66 ng/ml



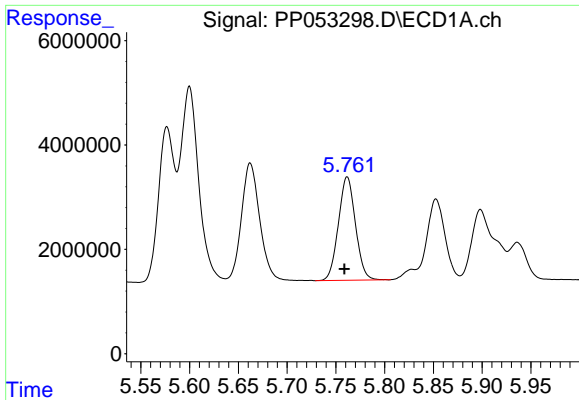
#18 AR-1242-3

R.T.: 5.662 min
 Delta R.T.: 0.003 min
 Response: 29820188
 Conc: 665.88 ng/ml



#18 AR-1242-3

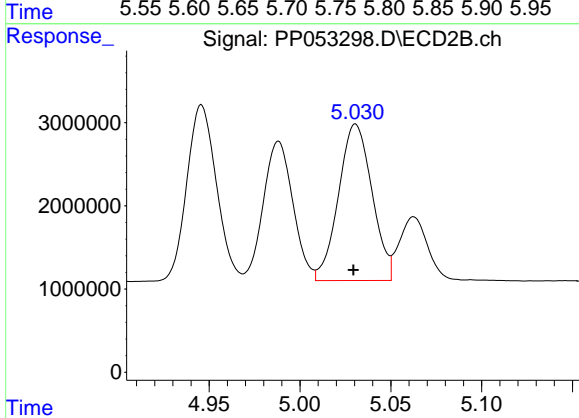
R.T.: 4.946 min
 Delta R.T.: 0.001 min
 Response: 23991430
 Conc: 722.39 ng/ml



#19 AR-1242-4

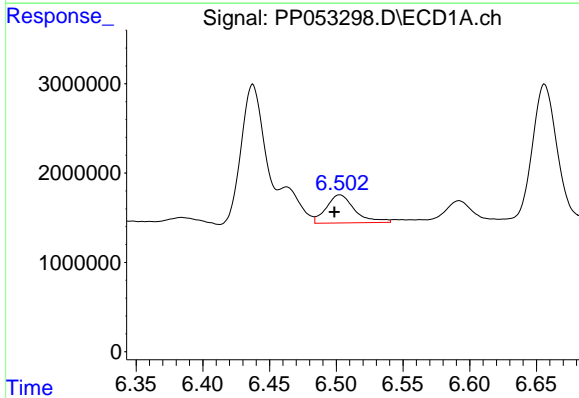
R.T.: 5.762 min
 Delta R.T.: 0.003 min
 Response: 24144548
 Conc: 671.36 ng/ml

Instrument :
 ECD_P
 ClientSampleId :



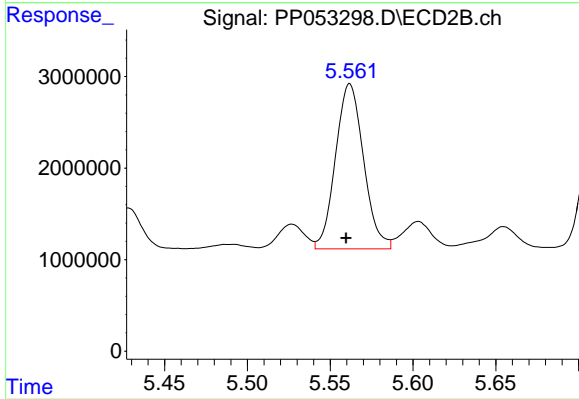
#19 AR-1242-4

R.T.: 5.031 min
 Delta R.T.: 0.001 min
 Response: 24162108
 Conc: 691.13 ng/ml



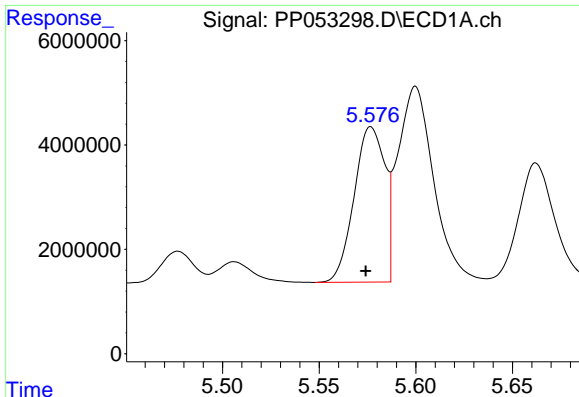
#20 AR-1242-5

R.T.: 6.503 min
 Delta R.T.: 0.004 min
 Response: 4651307
 Conc: 127.40 ng/ml



#20 AR-1242-5

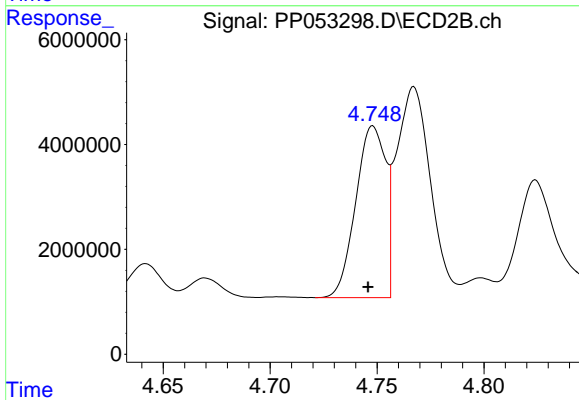
R.T.: 5.562 min
 Delta R.T.: 0.002 min
 Response: 21257467
 Conc: 485.43 ng/ml



#21 AR-1248-1

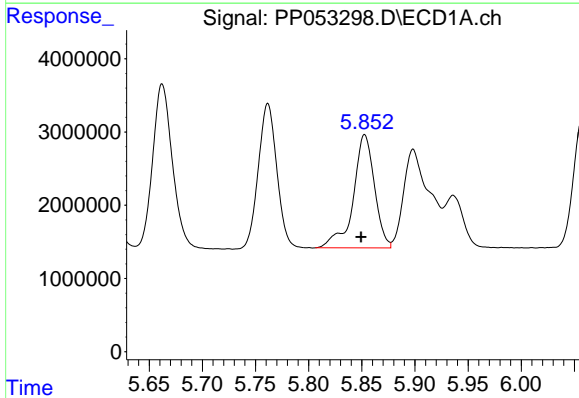
R.T.: 5.577 min
 Delta R.T.: 0.003 min
 Response: 32927773
 Conc: 882.84 ng/ml

Instrument :
 ECD_P
 ClientSampleId :



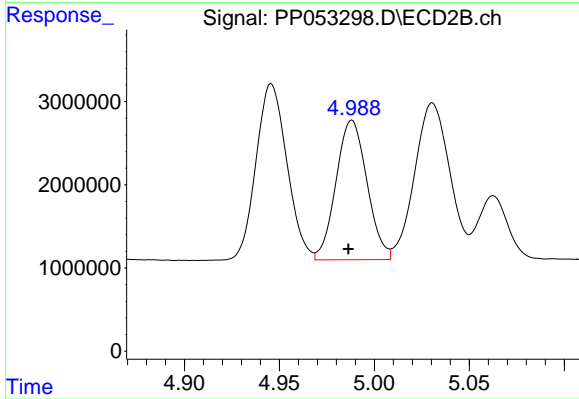
#21 AR-1248-1

R.T.: 4.748 min
 Delta R.T.: 0.002 min
 Response: 3185921
 Conc: 929.12 ng/ml



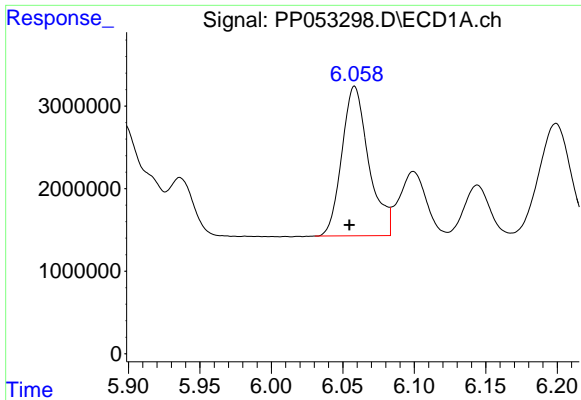
#22 AR-1248-2

R.T.: 5.853 min
 Delta R.T.: 0.003 min
 Response: 21465172
 Conc: 392.33 ng/ml



#22 AR-1248-2

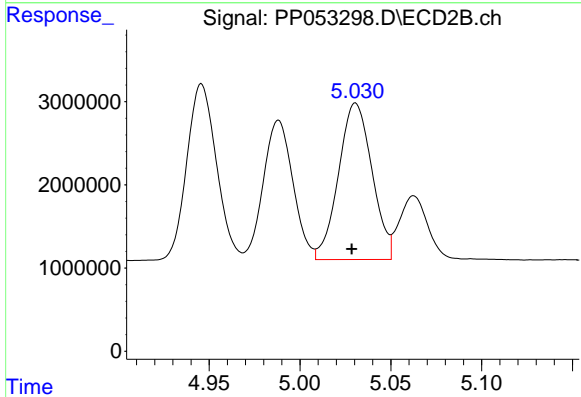
R.T.: 4.988 min
 Delta R.T.: 0.002 min
 Response: 19066346
 Conc: 397.03 ng/ml



#23 AR-1248-3

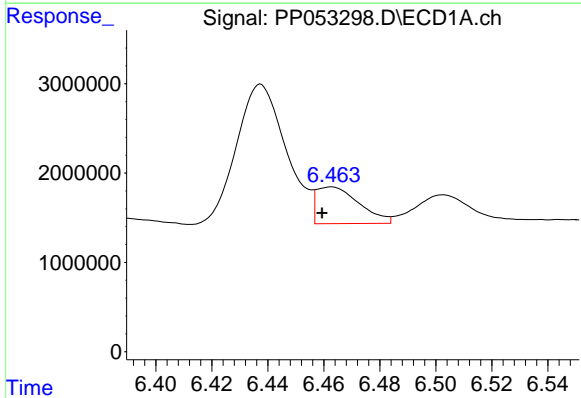
R.T.: 6.058 min
 Delta R.T.: 0.004 min
 Response: 23754698
 Conc: 398.64 ng/ml

Instrument :
 ECD_P
 ClientSampleId :



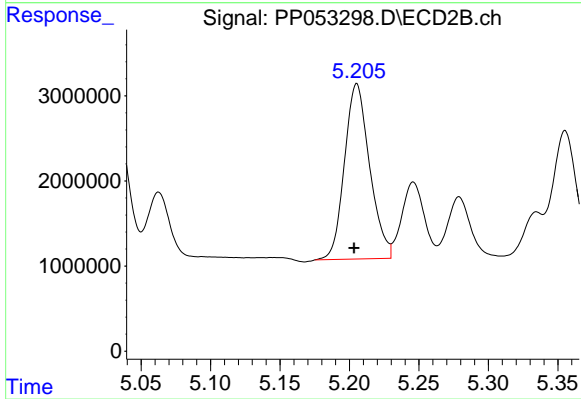
#23 AR-1248-3

R.T.: 5.031 min
 Delta R.T.: 0.002 min
 Response: 24162108
 Conc: 487.61 ng/ml



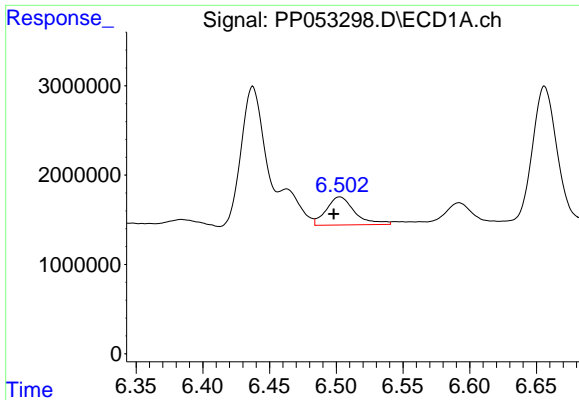
#24 AR-1248-4

R.T.: 6.463 min
 Delta R.T.: 0.003 min
 Response: 4334291
 Conc: 70.25 ng/ml



#24 AR-1248-4

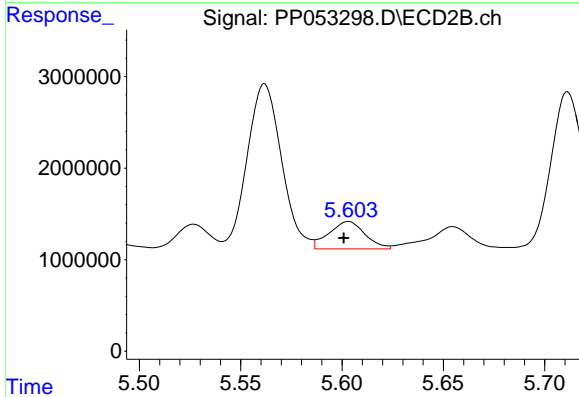
R.T.: 5.205 min
 Delta R.T.: 0.002 min
 Response: 25971886
 Conc: 439.76 ng/ml



#25 AR-1248-5

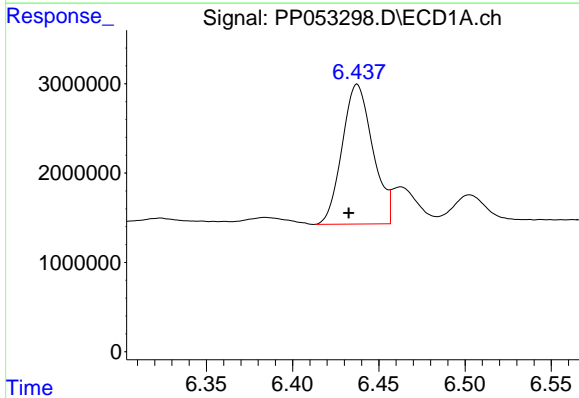
R.T.: 6.503 min
 Delta R.T.: 0.004 min
 Response: 4651307
 Conc: 77.11 ng/ml

Instrument :
 ECD_P
 ClientSampleId :



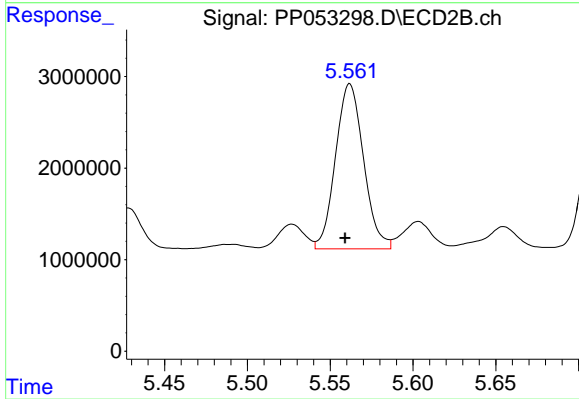
#25 AR-1248-5

R.T.: 5.603 min
 Delta R.T.: 0.002 min
 Response: 3705104
 Conc: 67.35 ng/ml



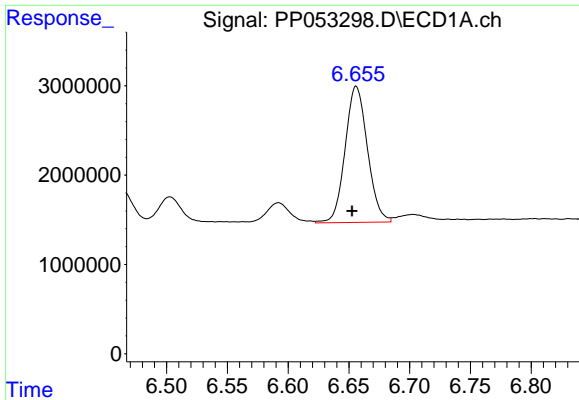
#26 AR-1254-1

R.T.: 6.437 min
 Delta R.T.: 0.005 min
 Response: 19287674
 Conc: 272.82 ng/ml



#26 AR-1254-1

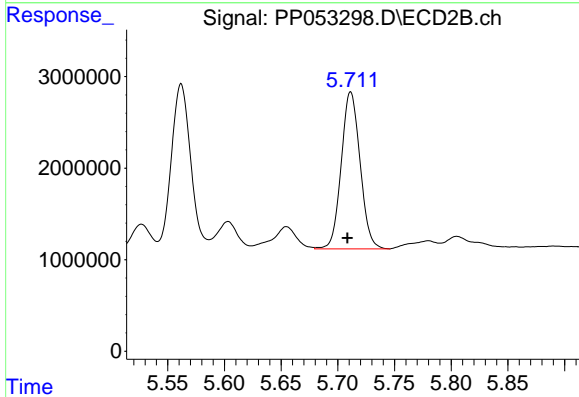
R.T.: 5.562 min
 Delta R.T.: 0.003 min
 Response: 21257467
 Conc: 234.50 ng/ml



#27 AR-1254-2

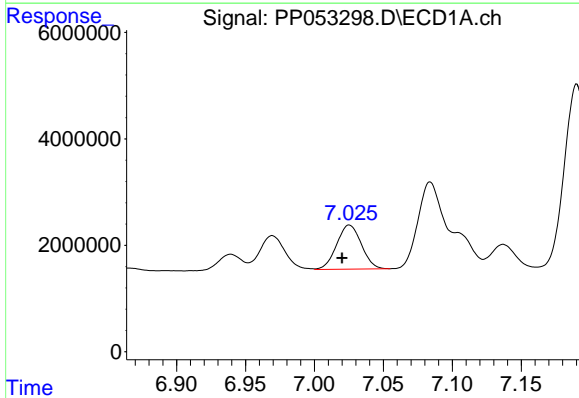
R.T.: 6.656 min
 Delta R.T.: 0.004 min
 Response: 19484478
 Conc: 185.48 ng/ml

Instrument :
 ECD_P
 ClientSampleId :



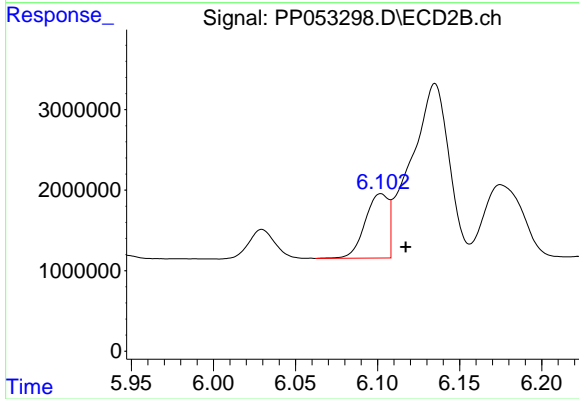
#27 AR-1254-2

R.T.: 5.711 min
 Delta R.T.: 0.003 min
 Response: 19832552
 Conc: 244.26 ng/ml



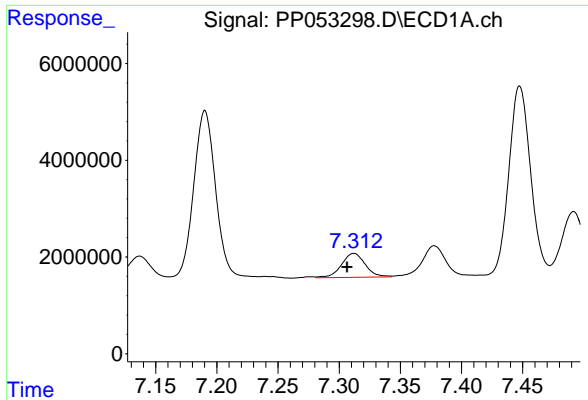
#28 AR-1254-3

R.T.: 7.025 min
 Delta R.T.: 0.005 min
 Response: 10313831
 Conc: 100.55 ng/ml



#28 AR-1254-3

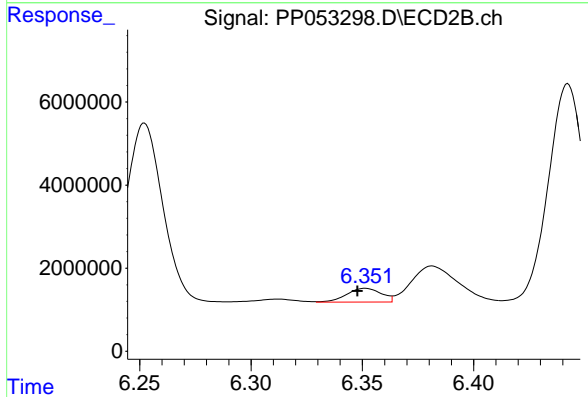
R.T.: 6.102 min
 Delta R.T.: -0.015 min
 Response: 7926271
 Conc: 62.36 ng/ml



#29 AR-1254-4

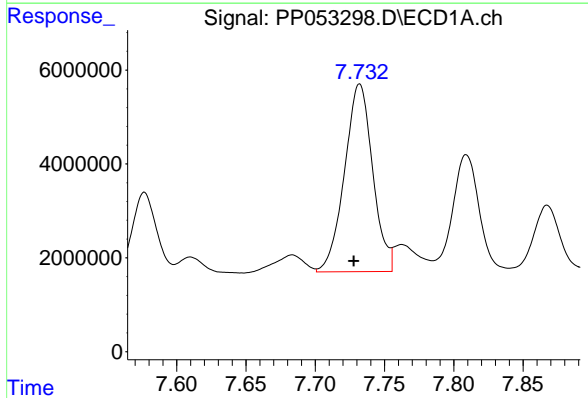
R.T.: 7.312 min
 Delta R.T.: 0.006 min
 Response: 6702111
 Conc: 96.34 ng/ml

Instrument :
 ECD_P
 ClientSampleId :



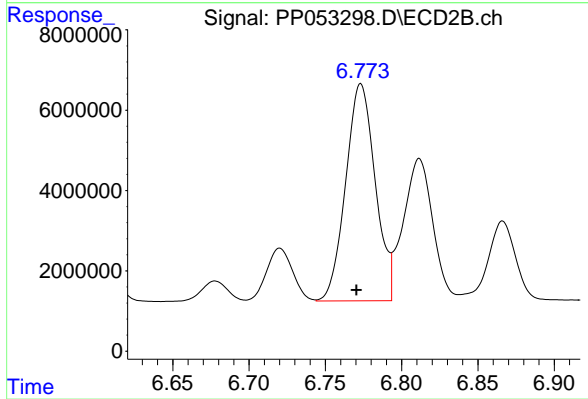
#29 AR-1254-4

R.T.: 6.351 min
 Delta R.T.: 0.004 min
 Response: 3539027
 Conc: 44.88 ng/ml



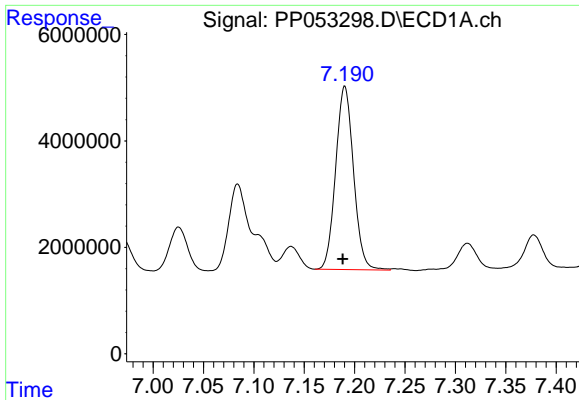
#30 AR-1254-5

R.T.: 7.732 min
 Delta R.T.: 0.004 min
 Response: 56564167
 Conc: 714.13 ng/ml



#30 AR-1254-5

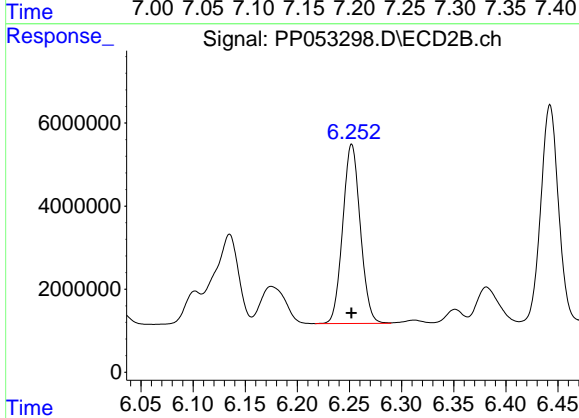
R.T.: 6.773 min
 Delta R.T.: 0.003 min
 Response: 72852773
 Conc: 576.78 ng/ml



#31 AR-1260-1

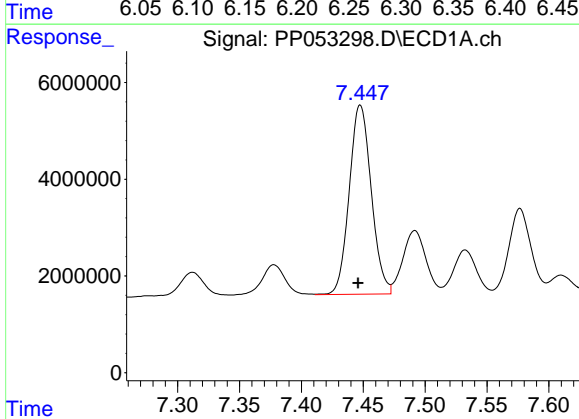
R.T.: 7.190 min
 Delta R.T.: 0.002 min
 Response: 42456976
 Conc: 519.21 ng/ml

Instrument :
 ECD_P
 ClientSampleId :



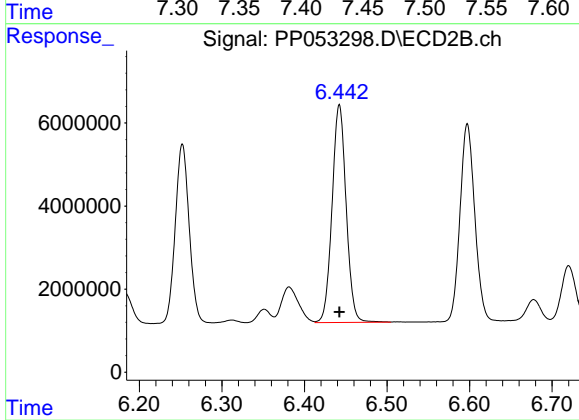
#31 AR-1260-1

R.T.: 6.252 min
 Delta R.T.: 0.000 min
 Response: 50661349
 Conc: 552.65 ng/ml



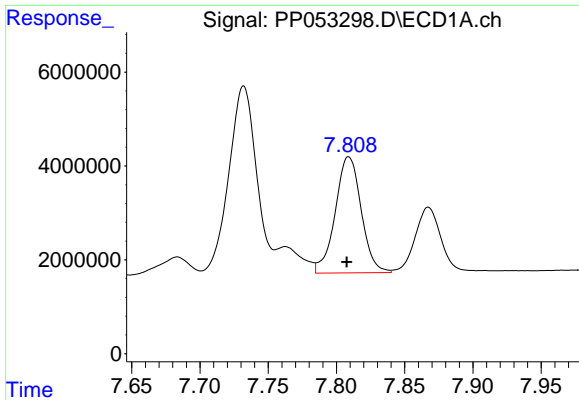
#32 AR-1260-2

R.T.: 7.448 min
 Delta R.T.: 0.002 min
 Response: 48466286
 Conc: 523.35 ng/ml



#32 AR-1260-2

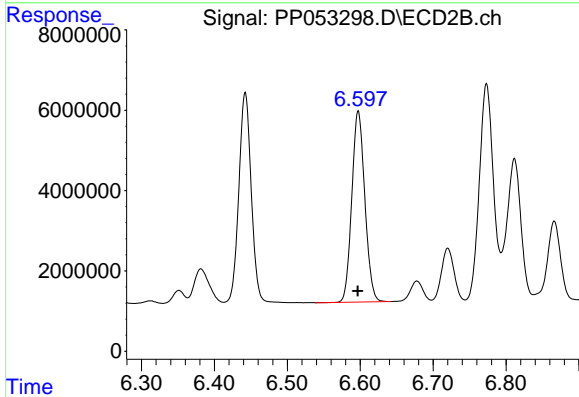
R.T.: 6.442 min
 Delta R.T.: 0.000 min
 Response: 62234829
 Conc: 540.83 ng/ml



#33 AR-1260-3

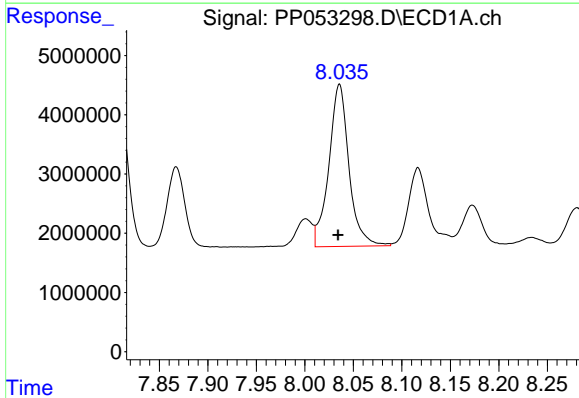
R.T.: 7.809 min
 Delta R.T.: 0.001 min
 Response: 32773953
 Conc: 525.49 ng/ml

Instrument :
 ECD_P
 ClientSampleId :



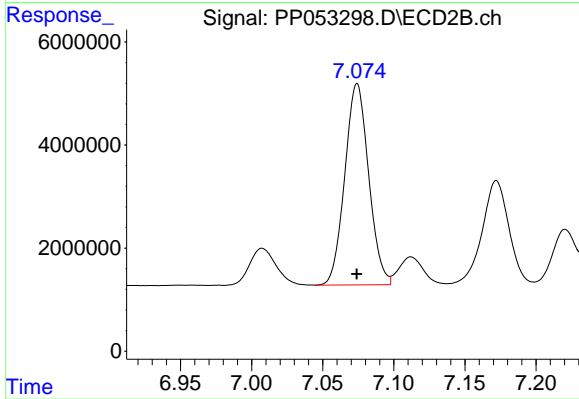
#33 AR-1260-3

R.T.: 6.597 min
 Delta R.T.: 0.000 min
 Response: 58944378
 Conc: 549.30 ng/ml



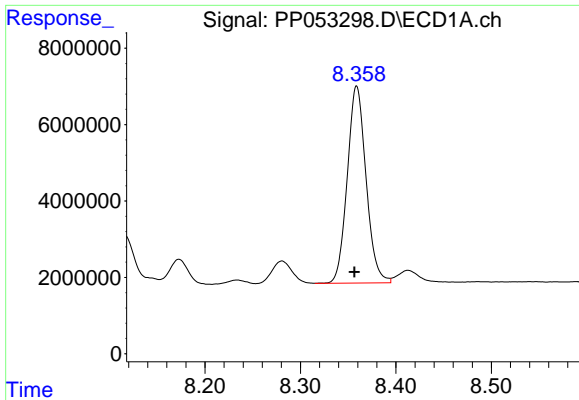
#34 AR-1260-4

R.T.: 8.036 min
 Delta R.T.: 0.002 min
 Response: 39618416
 Conc: 528.86 ng/ml



#34 AR-1260-4

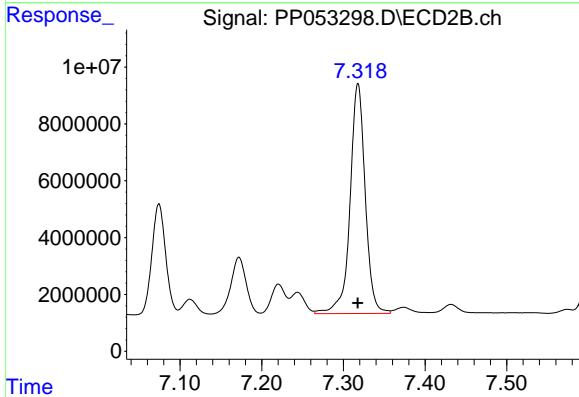
R.T.: 7.074 min
 Delta R.T.: 0.000 min
 Response: 45637698
 Conc: 551.62 ng/ml



#35 AR-1260-5

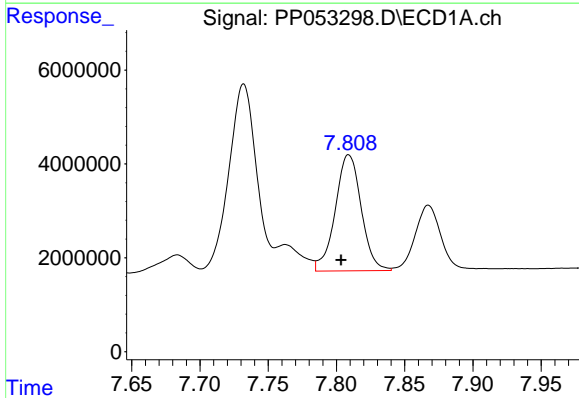
R.T.: 8.359 min
 Delta R.T.: 0.002 min
 Response: 70484033
 Conc: 556.89 ng/ml

Instrument :
 ECD_P
 ClientSampleId :



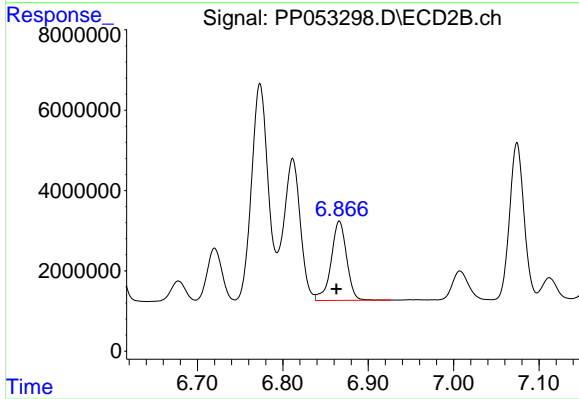
#35 AR-1260-5

R.T.: 7.318 min
 Delta R.T.: 0.000 min
 Response: 104592393
 Conc: 552.36 ng/ml



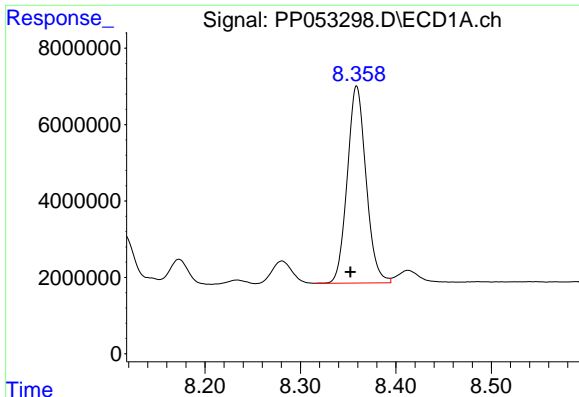
#36 AR-1262-1

R.T.: 7.809 min
 Delta R.T.: 0.005 min
 Response: 32773953
 Conc: 341.08 ng/ml



#36 AR-1262-1

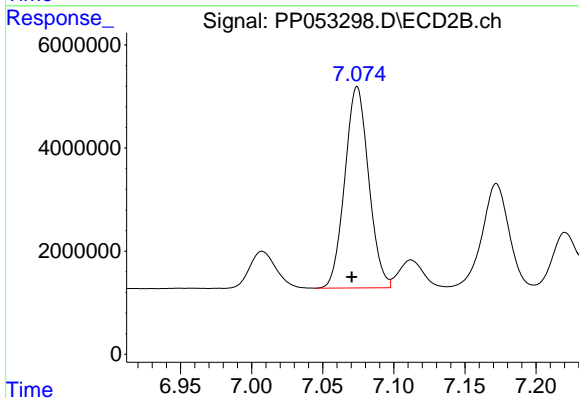
R.T.: 6.866 min
 Delta R.T.: 0.004 min
 Response: 24958028
 Conc: 473.96 ng/ml



#37 AR-1262-2

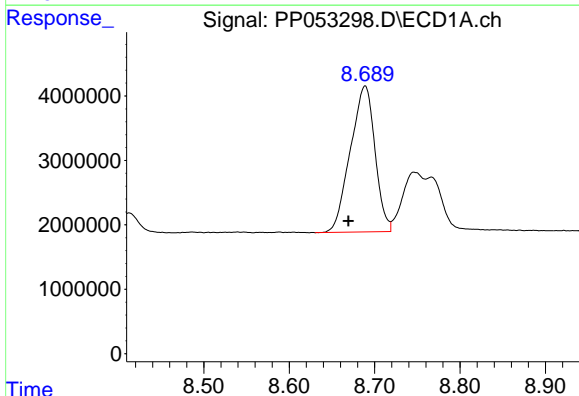
R.T.: 8.359 min
 Delta R.T.: 0.007 min
 Response: 70484033
 Conc: 465.64 ng/ml

Instrument :
 ECD_P
 ClientSampleId :



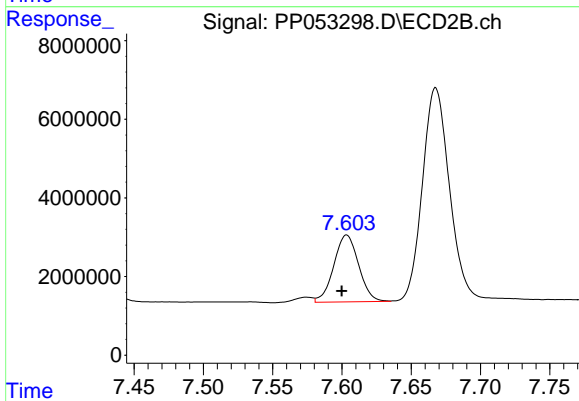
#37 AR-1262-2

R.T.: 7.074 min
 Delta R.T.: 0.004 min
 Response: 45637698
 Conc: 393.55 ng/ml



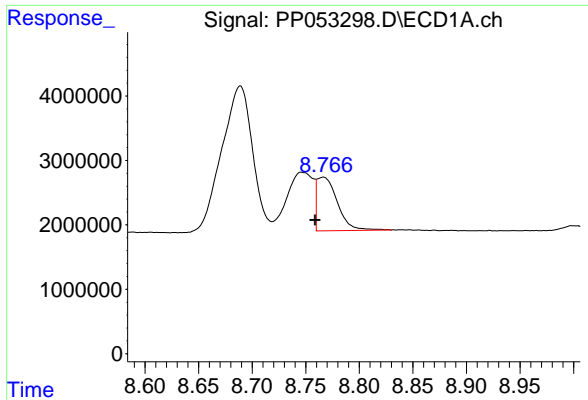
#38 AR-1262-3

R.T.: 8.689 min
 Delta R.T.: 0.020 min
 Response: 45450964
 Conc: 438.69 ng/ml



#38 AR-1262-3

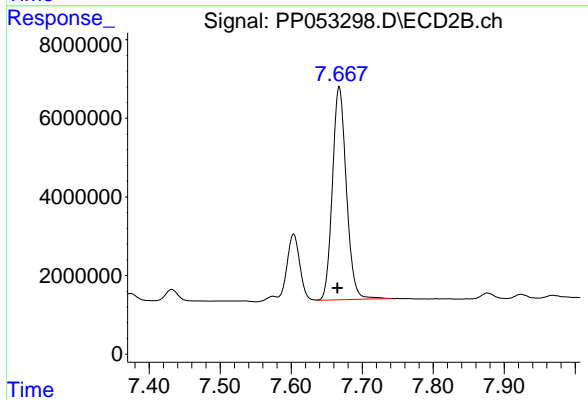
R.T.: 7.603 min
 Delta R.T.: 0.004 min
 Response: 21209039
 Conc: 231.54 ng/ml



#39 AR-1262-4

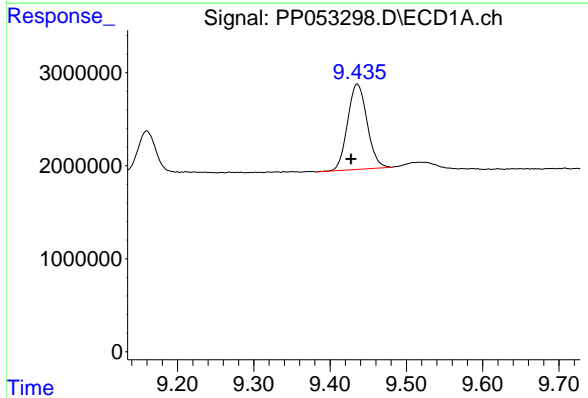
R.T.: 8.767 min
 Delta R.T.: 0.008 min
 Response: 11093893
 Conc: 137.20 ng/ml

Instrument :
 ECD_P
 ClientSampleId :



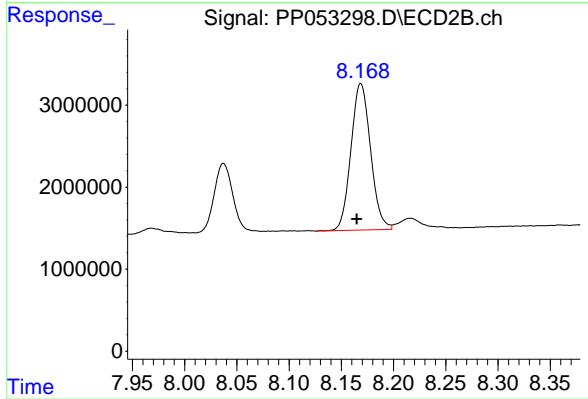
#39 AR-1262-4

R.T.: 7.668 min
 Delta R.T.: 0.003 min
 Response: 73942866
 Conc: 450.85 ng/ml



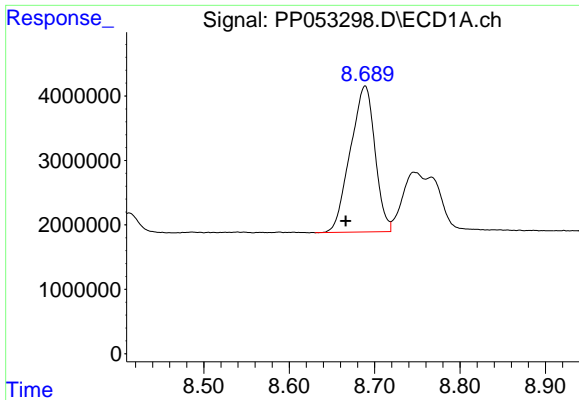
#40 AR-1262-5

R.T.: 9.436 min
 Delta R.T.: 0.008 min
 Response: 16312340
 Conc: 320.83 ng/ml



#40 AR-1262-5

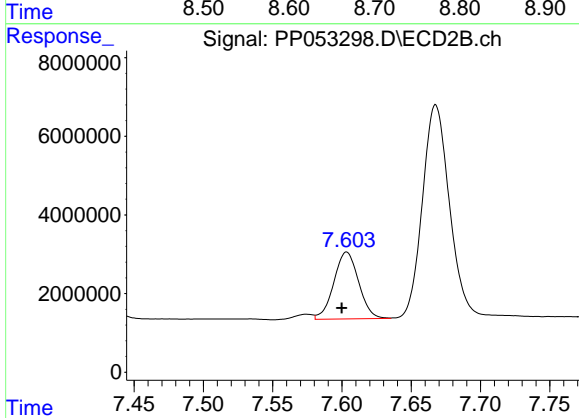
R.T.: 8.169 min
 Delta R.T.: 0.004 min
 Response: 23387366
 Conc: 307.86 ng/ml



#41 AR-1268-1

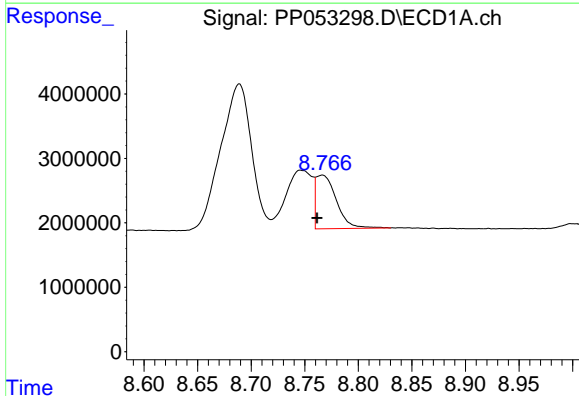
R.T.: 8.689 min
 Delta R.T.: 0.023 min
 Response: 45450964
 Conc: 239.88 ng/ml

Instrument :
 ECD_P
 ClientSampleId :



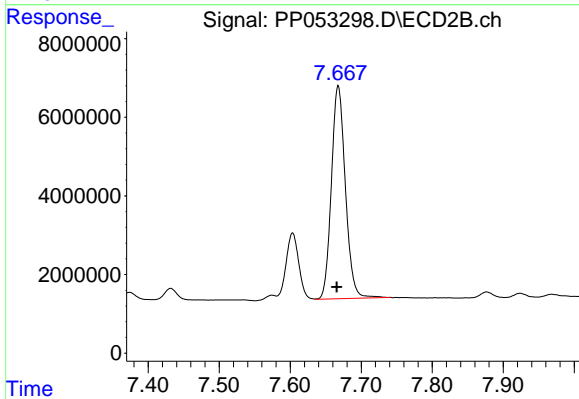
#41 AR-1268-1

R.T.: 7.603 min
 Delta R.T.: 0.004 min
 Response: 21209039
 Conc: 79.35 ng/ml



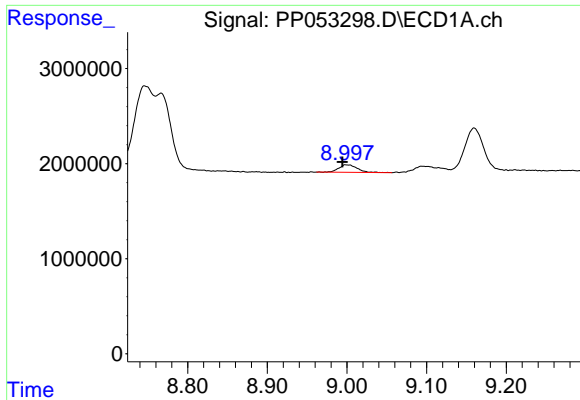
#42 AR-1268-2

R.T.: 8.767 min
 Delta R.T.: 0.005 min
 Response: 11093893
 Conc: 65.40 ng/ml



#42 AR-1268-2

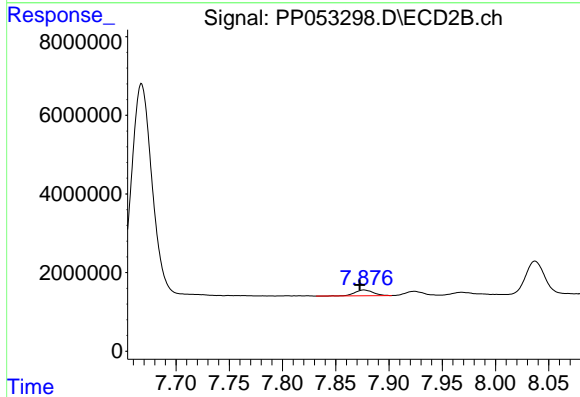
R.T.: 7.668 min
 Delta R.T.: 0.002 min
 Response: 73942866
 Conc: 309.67 ng/ml



#43 AR-1268-3

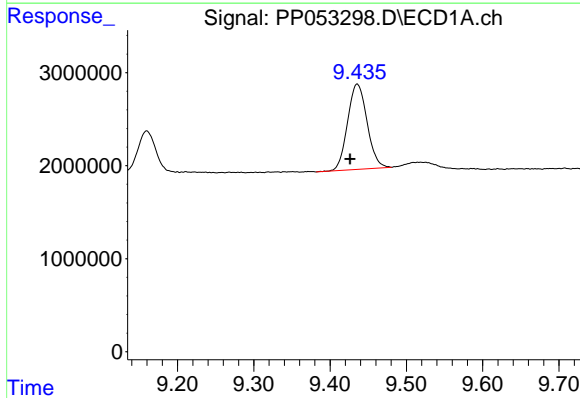
R.T.: 8.999 min
 Delta R.T.: 0.004 min
 Response: 1277848
 Conc: 8.53 ng/ml

Instrument :
 ECD_P
 ClientSampleId :



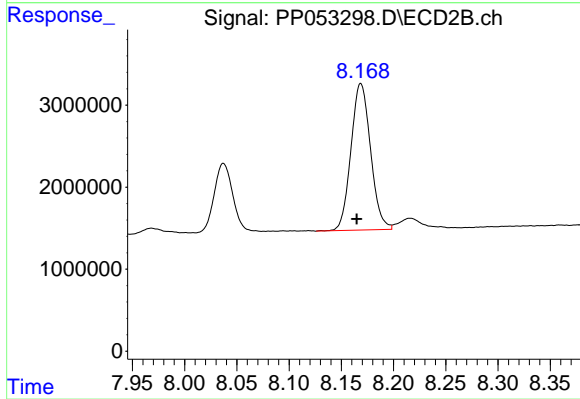
#43 AR-1268-3

R.T.: 7.877 min
 Delta R.T.: 0.004 min
 Response: 1775591
 Conc: 8.64 ng/ml



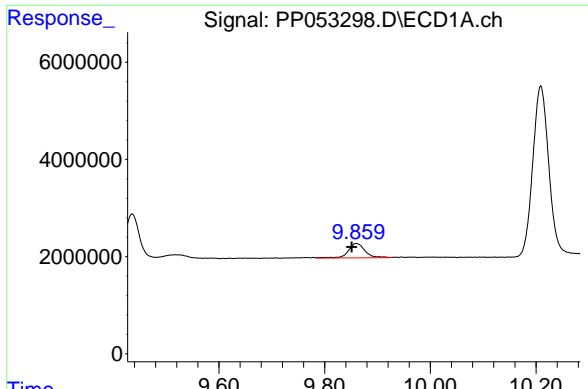
#44 AR-1268-4

R.T.: 9.436 min
 Delta R.T.: 0.009 min
 Response: 16312340
 Conc: 291.44 ng/ml



#44 AR-1268-4

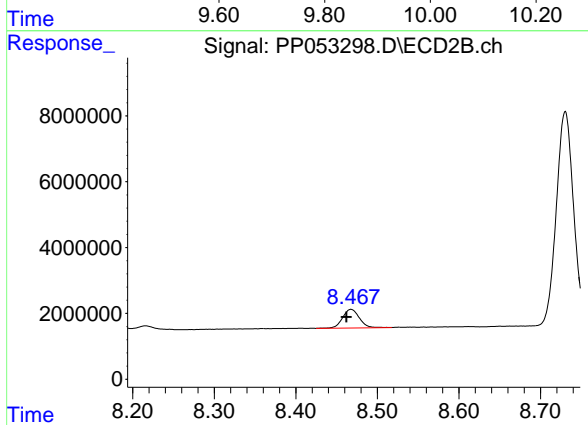
R.T.: 8.169 min
 Delta R.T.: 0.004 min
 Response: 23387366
 Conc: 284.13 ng/ml



#45 AR-1268-5

R.T.: 9.860 min
Delta R.T.: 0.009 min
Response: 6441329
Conc: 13.98 ng/ml

Instrument :
ECD_P
ClientSampleId :



#45 AR-1268-5

R.T.: 8.468 min
Delta R.T.: 0.006 min
Response: 8097292
Conc: 12.20 ng/ml