

Data Path : Z:\pestpcbsrv\HPCHEM1\ECD_P\Data\PP111122\
 Data File : PP053306.D
 Signal(s) : Signal #1: ECD1A.ch Signal #2: ECD2B.ch
 Acq On : 11 Nov 2022 20:04
 Operator : YP\AJ
 Sample : AR1242CCC500
 Misc :
 ALS Vial : 4 Sample Multiplier: 1

Instrument :
 ECD_P
 ClientSampleId :

Integration File signal 1: autoint1.e
 Integration File signal 2: autoint2.e
 Quant Time: Nov 12 01:44:39 2022
 Quant Method : Z:\pestpcbsrv\HPCHEM1\ECD_P\methods\PP110822.M
 Quant Title : GC EXTRACTABLES
 QLast Update : Wed Nov 09 05:50:05 2022
 Response via : Initial Calibration
 Integrator: ChemStation

Volume Inj. : 2 µl
 Signal #1 Phase : ZB-MR1 Signal #2 Phase: ZB-MR2
 Signal #1 Info : 30Mx0.32mmx 0.50µ Signal #2 Info : 30M x 0.32mm x 0.25µm

Compound	RT#1	RT#2	Resp#1	Resp#2	ng/ml	ng/ml

System Monitoring Compounds						
1) SA Tetrachlo...	4.405	3.649	101.5E6	86039828	52.825	57.198
2) SA Decachlor...	10.211	8.731	71494654	92023126	52.726	49.096
Target Compounds						
3) L1 AR-1016-1	5.579	4.749	23915541	23365130	384.433	416.594
4) L1 AR-1016-2	5.601	4.768	34975199	32212799	378.409	415.017
5) L1 AR-1016-3	5.664	4.947	21894337	17744959	386.850	422.604
6) L1 AR-1016-4	5.763	4.989	17764629	14558787	390.534	416.553
7) L1 AR-1016-5	6.059	5.206	18460549	20412475	407.834	449.415
8) L2 AR-1221-1	4.610	3.864	2946398	2578697	131.093	135.056
9) L2 AR-1221-2	4.701	3.953	4392115	3916005	264.328	267.340
10) L2 AR-1221-3	4.777	4.029	14699199	13819617	291.863	307.694
11) L3 AR-1232-1	4.777	4.029	14699199	13819617	383.329	408.945
12) L3 AR-1232-2	5.309	4.768	19015112	32212799	844.825	925.495
13) L3 AR-1232-3	5.601	4.947	34975199	17744959	861.720	951.114
14) L3 AR-1232-4	5.763	5.032	17764629	18337795	880.214	1041.701
15) L3 AR-1232-5	5.854	5.206	16292110	20412475	982.576	1025.641
16) L4 AR-1242-1	5.579	4.749	23915541	23365130	490.739	529.954
17) L4 AR-1242-2	5.601	4.768	34975199	32212799	485.128	520.854
18) L4 AR-1242-3	5.664	4.947	21894337	17744959	488.899	534.305
19) L4 AR-1242-4	5.763	5.032	17764629	18337795	493.963	524.528
20) L4 AR-1242-5	6.504	5.563	18399073	23004300	503.952	525.322
21) L5 AR-1248-1	5.579	4.749	23915541	23365130	641.213	681.476
22) L5 AR-1248-2	5.854	4.989	16292110	14558787	297.776	303.167
23) L5 AR-1248-3	6.059	5.032	18460549	18337795	309.800	370.068
24) L5 AR-1248-4	6.465	5.206	17066310	20412475	276.619	345.630
25) L5 AR-1248-5	6.504	5.604	18399073	18067625	305.015	328.418
26) L6 AR-1254-1	6.438	5.563	13866449	23004300	196.140	253.769 #
27) L6 AR-1254-2	6.662	5.713	16706125	7159887	159.031	88.182 #
28) L6 AR-1254-3	7.027	6.122	8267825	9350244	80.604	73.558
29) L6 AR-1254-4	7.313	6.353	4998474	6188484	71.850	78.481
30) L6 AR-1254-5	7.734	6.775	2500714	4101226	31.572	32.470
31) L7 AR-1260-1	7.192	6.268f	-168110	5162168	N.D.	56.313 #
32) L7 AR-1260-2	7.449	6.442	1872981	2250635	20.225	19.558
33) L7 AR-1260-3	7.797	6.598	547681	1998952	8.781	18.628 #
34) L7 AR-1260-4	8.024	7.079	2067273	202918	27.596	2.453 #
35) L7 AR-1260-5	8.361	7.319	437585	353882	3.457	1.869 #
36) L8 AR-1262-1	7.797	6.846f	547681	449074	5.700	8.528 #
37) L8 AR-1262-2	8.361	7.079	437585	202918	2.891	1.750 #
39) L8 AR-1262-4	8.737f	7.666	432629	588030	5.350	3.585 #
40) L8 AR-1262-5	9.418	8.188f	71640	421481	1.409	5.548 #
42) L9 AR-1268-2	8.737f	7.666	432629	588030	2.550	2.463
43) L9 AR-1268-3	9.009	7.877	109392	454574	0.731	2.211 #

Data Path : Z:\pestpcbsrv\HPCHEM1\ECD_P\Data\PP111122\
 Data File : PP053306.D
 Signal(s) : Signal #1: ECD1A.ch Signal #2: ECD2B.ch
 Acq On : 11 Nov 2022 20:04
 Operator : YP\AJ
 Sample : AR1242CCC500
 Misc :
 ALS Vial : 4 Sample Multiplier: 1

Instrument :
 ECD_P
 ClientSampleId :

Integration File signal 1: autoint1.e
 Integration File signal 2: autoint2.e
 Quant Time: Nov 12 01:44:39 2022
 Quant Method : Z:\pestpcbsrv\HPCHEM1\ECD_P\methods\PP110822.M
 Quant Title : GC EXTRACTABLES
 QLast Update : Wed Nov 09 05:50:05 2022
 Response via : Initial Calibration
 Integrator: ChemStation

Volume Inj. : 2 µl
 Signal #1 Phase : ZB-MR1 Signal #2 Phase: ZB-MR2
 Signal #1 Info : 30Mx0.32mmx 0.50µ Signal #2 Info : 30M x 0.32mm x 0.25µm

	Compound	RT#1	RT#2	Resp#1	Resp#2	ng/ml	ng/ml
44)	L9 AR-1268-4	9.418	8.188f	71640	421481	1.280	5.120 #
45)	L9 AR-1268-5	9.869f	8.471	494133	681928	1.073	1.028

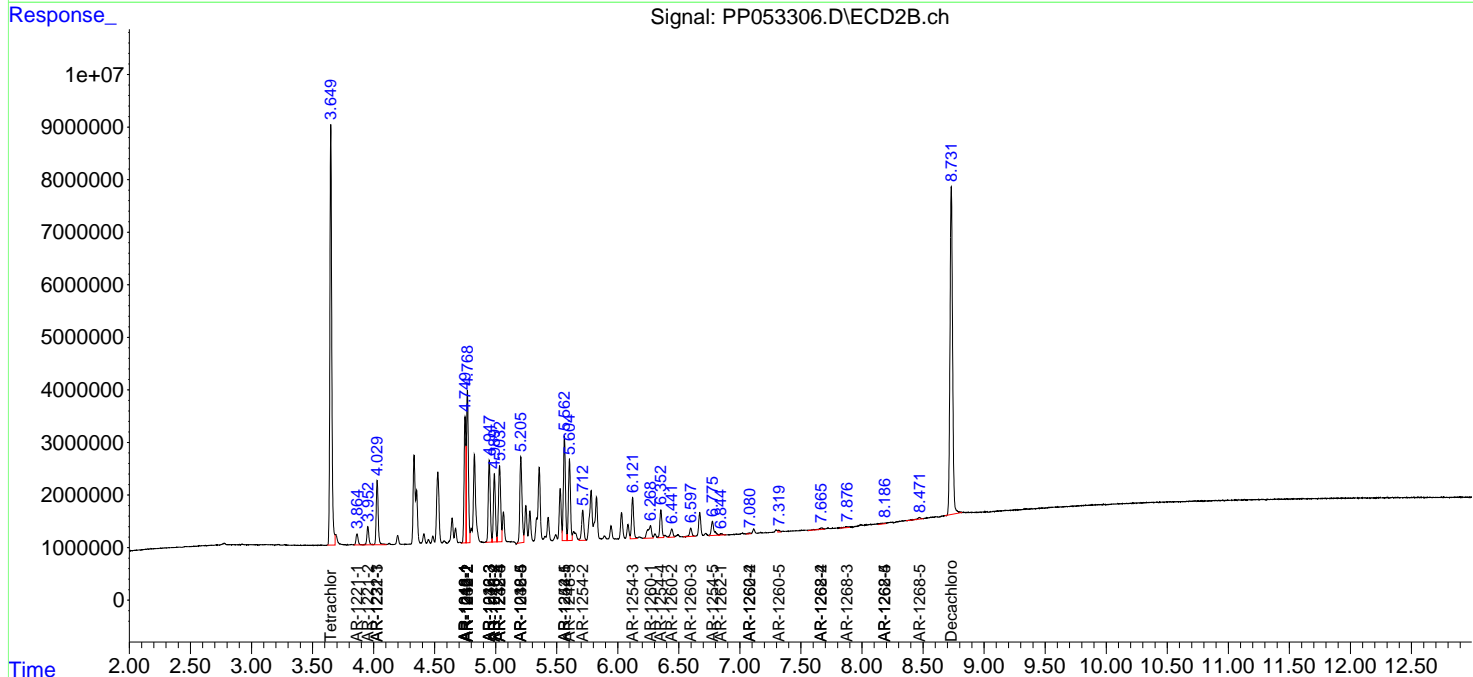
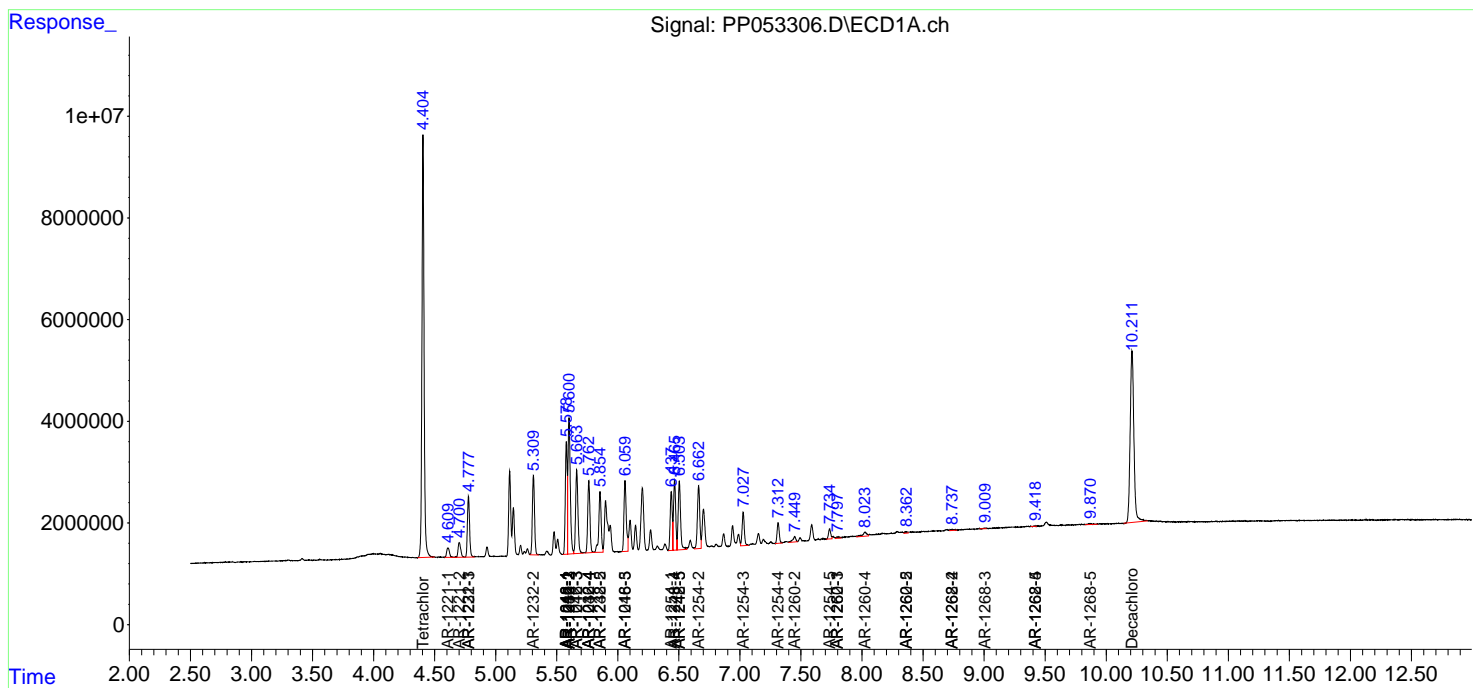
(f)=RT Delta > 1/2 Window (#)=Amounts differ by > 25% (m)=manual int.

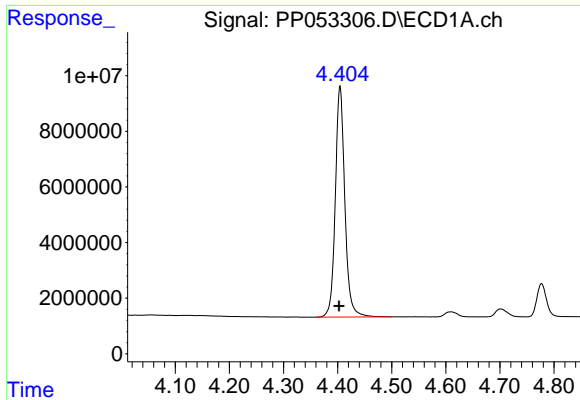
Data Path : Z:\pestpcbsrv\HPCHEM1\ECD_P\Data\PP111122\
 Data File : PP053306.D
 Signal(s) : Signal #1: ECD1A.ch Signal #2: ECD2B.ch
 Acq On : 11 Nov 2022 20:04
 Operator : YP\AJ
 Sample : AR1242CCC500
 Misc :
 ALS Vial : 4 Sample Multiplier: 1

Instrument :
 ECD_P
 ClientSampleId :

Integration File signal 1: autoint1.e
 Integration File signal 2: autoint2.e
 Quant Time: Nov 12 01:44:39 2022
 Quant Method : Z:\pestpcbsrv\HPCHEM1\ECD_P\methods\PP110822.M
 Quant Title : GC EXTRACTABLES
 QLast Update : Wed Nov 09 05:50:05 2022
 Response via : Initial Calibration
 Integrator: ChemStation

Volume Inj. : 2 µl
 Signal #1 Phase : ZB-MR1 Signal #2 Phase: ZB-MR2
 Signal #1 Info : 30Mx0.32mmx 0.50µ Signal #2 Info : 30M x 0.32mm x 0.25µm

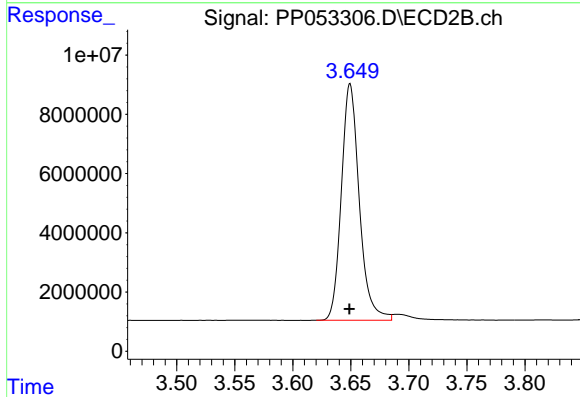




#1 Tetrachloro-m-xylene

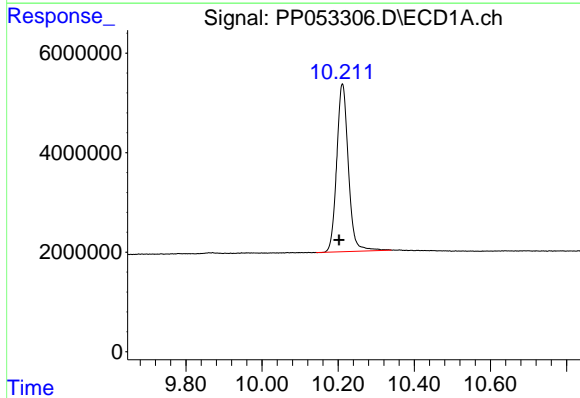
R.T.: 4.405 min
 Delta R.T.: 0.002 min
 Response: 101546759
 Conc: 52.82 ng/ml

Instrument :
 ECD_P
 ClientSampleId :



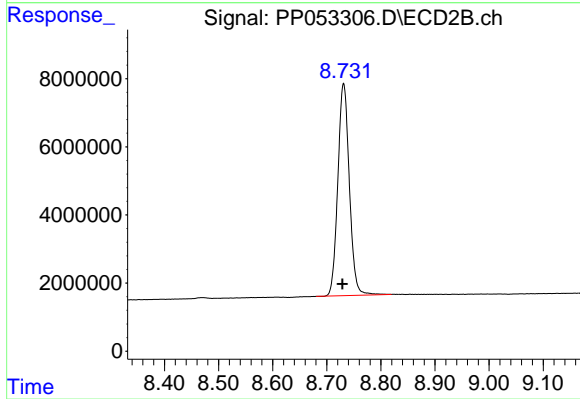
#1 Tetrachloro-m-xylene

R.T.: 3.649 min
 Delta R.T.: 0.000 min
 Response: 86039828
 Conc: 57.20 ng/ml



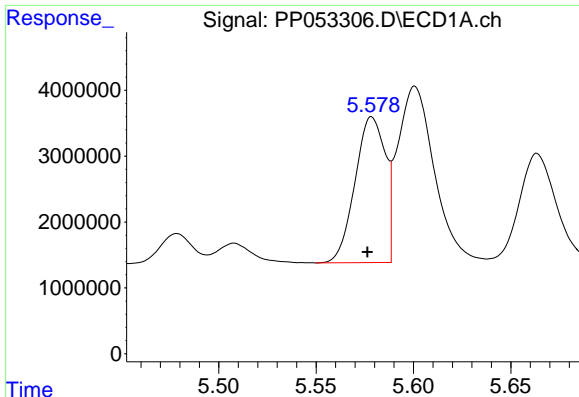
#2 Decachlorobiphenyl

R.T.: 10.211 min
 Delta R.T.: 0.009 min
 Response: 71494654
 Conc: 52.73 ng/ml



#2 Decachlorobiphenyl

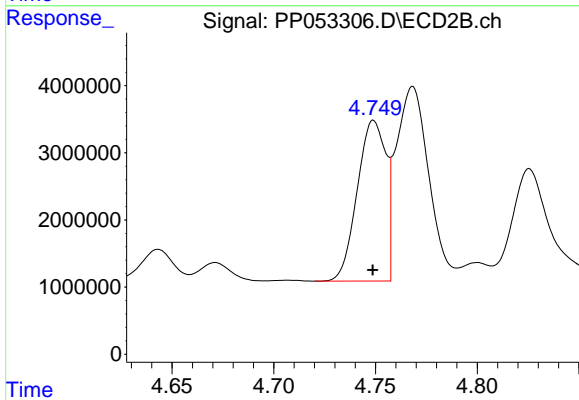
R.T.: 8.731 min
 Delta R.T.: 0.002 min
 Response: 92023126
 Conc: 49.10 ng/ml



#3 AR-1016-1

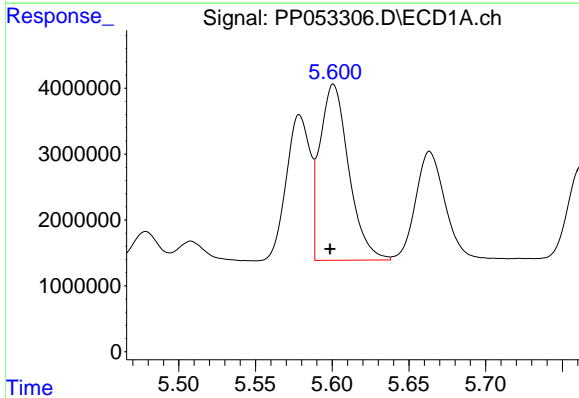
R.T.: 5.579 min
 Delta R.T.: 0.002 min
 Response: 23915541
 Conc: 384.43 ng/ml

Instrument :
 ECD_P
 ClientSampleId :



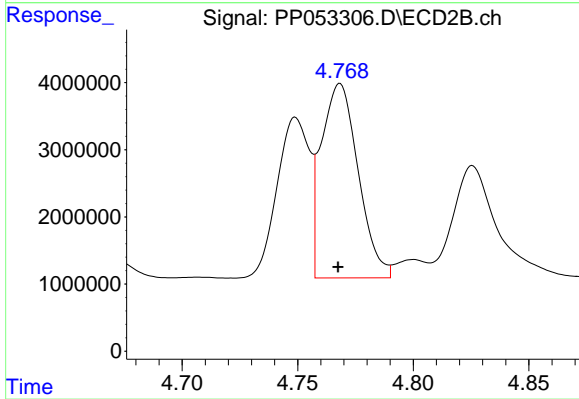
#3 AR-1016-1

R.T.: 4.749 min
 Delta R.T.: 0.000 min
 Response: 23365130
 Conc: 416.59 ng/ml



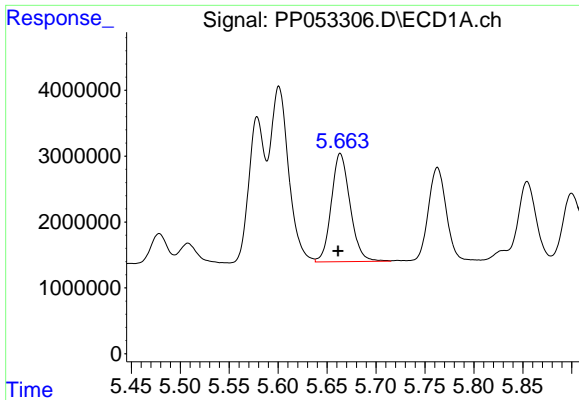
#4 AR-1016-2

R.T.: 5.601 min
 Delta R.T.: 0.002 min
 Response: 34975199
 Conc: 378.41 ng/ml



#4 AR-1016-2

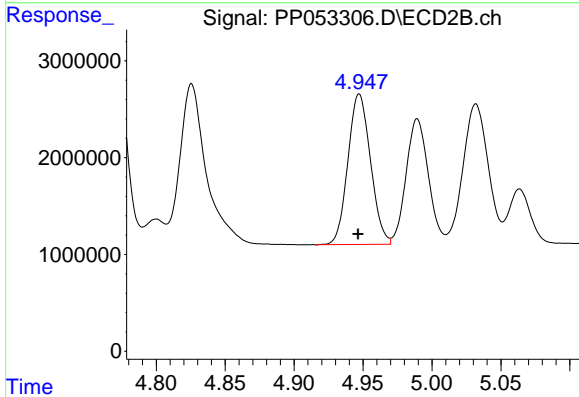
R.T.: 4.768 min
 Delta R.T.: 0.000 min
 Response: 32212799
 Conc: 415.02 ng/ml



#5 AR-1016-3

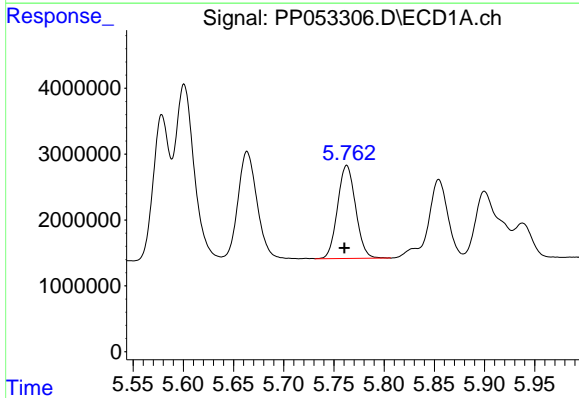
R.T.: 5.664 min
 Delta R.T.: 0.002 min
 Response: 21894337
 Conc: 386.85 ng/ml

Instrument :
 ECD_P
 ClientSampleId :



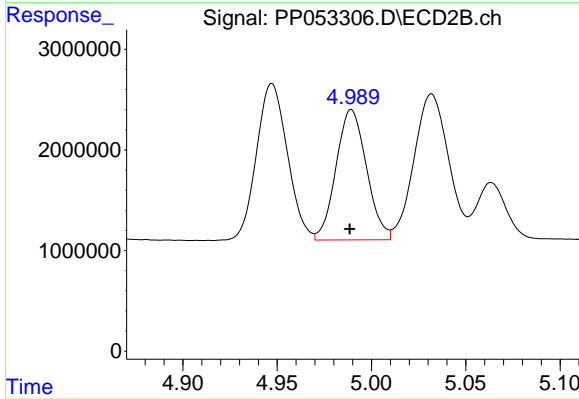
#5 AR-1016-3

R.T.: 4.947 min
 Delta R.T.: 0.000 min
 Response: 17744959
 Conc: 422.60 ng/ml



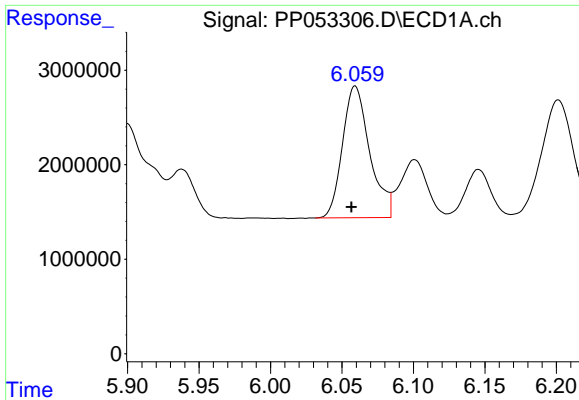
#6 AR-1016-4

R.T.: 5.763 min
 Delta R.T.: 0.002 min
 Response: 17764629
 Conc: 390.53 ng/ml



#6 AR-1016-4

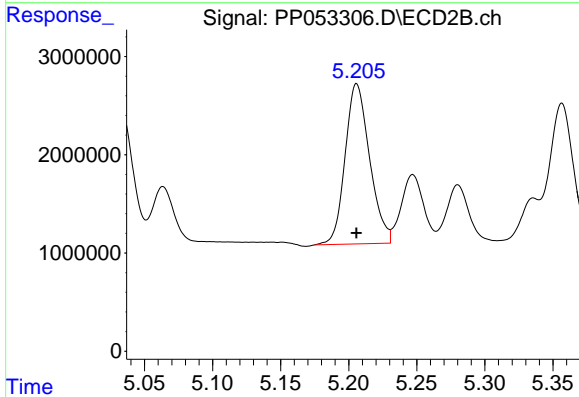
R.T.: 4.989 min
 Delta R.T.: 0.000 min
 Response: 14558787
 Conc: 416.55 ng/ml



#7 AR-1016-5

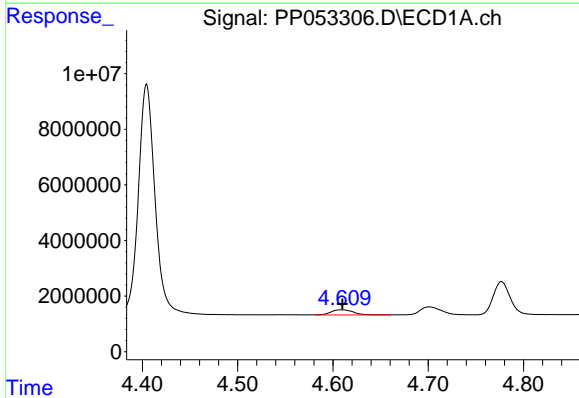
R.T.: 6.059 min
 Delta R.T.: 0.003 min
 Response: 18460549
 Conc: 407.83 ng/ml

Instrument :
 ECD_P
 ClientSampleId :



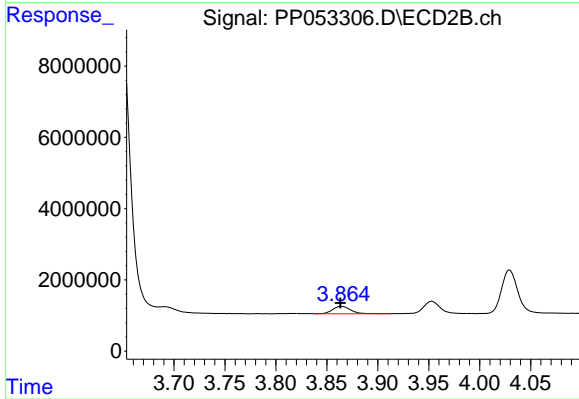
#7 AR-1016-5

R.T.: 5.206 min
 Delta R.T.: 0.000 min
 Response: 20412475
 Conc: 449.41 ng/ml



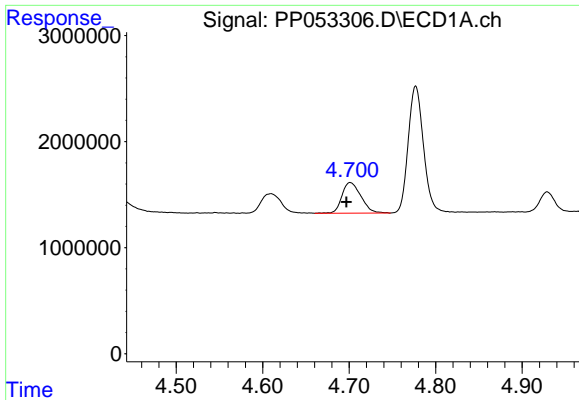
#8 AR-1221-1

R.T.: 4.610 min
 Delta R.T.: 0.000 min
 Response: 2946398
 Conc: 131.09 ng/ml



#8 AR-1221-1

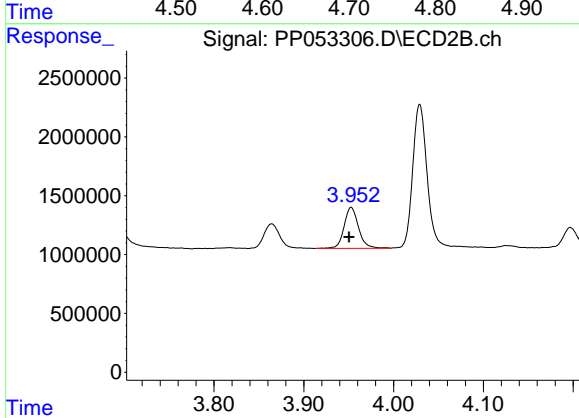
R.T.: 3.864 min
 Delta R.T.: 0.000 min
 Response: 2578697
 Conc: 135.06 ng/ml



#9 AR-1221-2

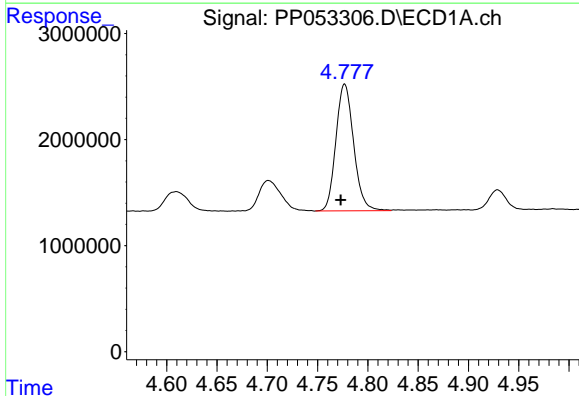
R.T.: 4.701 min
 Delta R.T.: 0.004 min
 Response: 4392115
 Conc: 264.33 ng/ml

Instrument :
 ECD_P
 ClientSampleId :



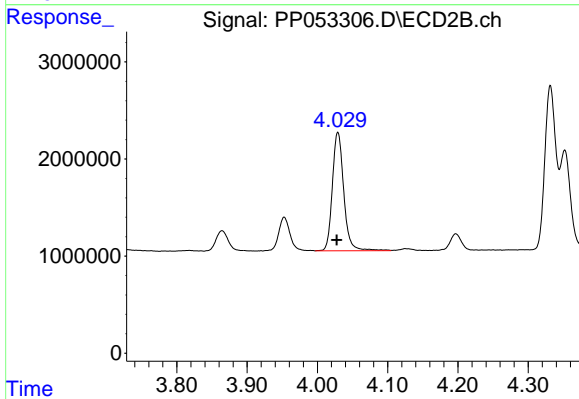
#9 AR-1221-2

R.T.: 3.953 min
 Delta R.T.: 0.002 min
 Response: 3916005
 Conc: 267.34 ng/ml



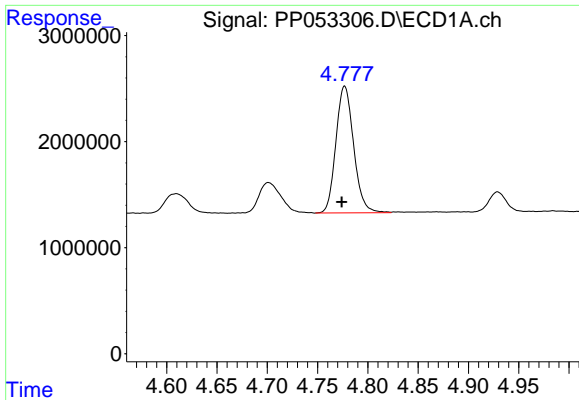
#10 AR-1221-3

R.T.: 4.777 min
 Delta R.T.: 0.004 min
 Response: 14699199
 Conc: 291.86 ng/ml



#10 AR-1221-3

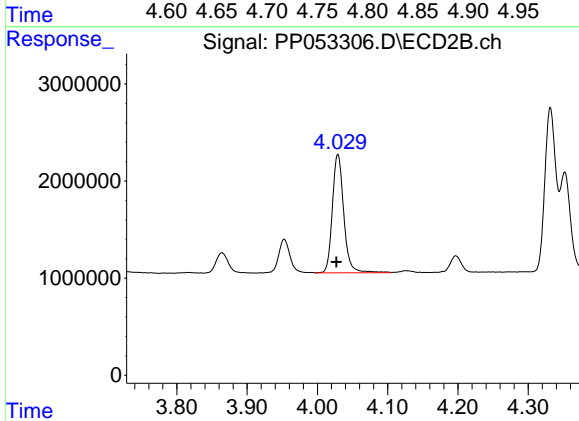
R.T.: 4.029 min
 Delta R.T.: 0.002 min
 Response: 13819617
 Conc: 307.69 ng/ml



#11 AR-1232-1

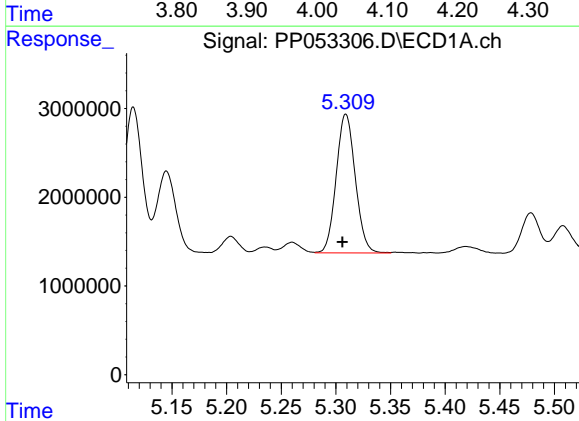
R.T.: 4.777 min
 Delta R.T.: 0.003 min
 Response: 14699199
 Conc: 383.33 ng/ml

Instrument :
 ECD_P
 ClientSampleId :



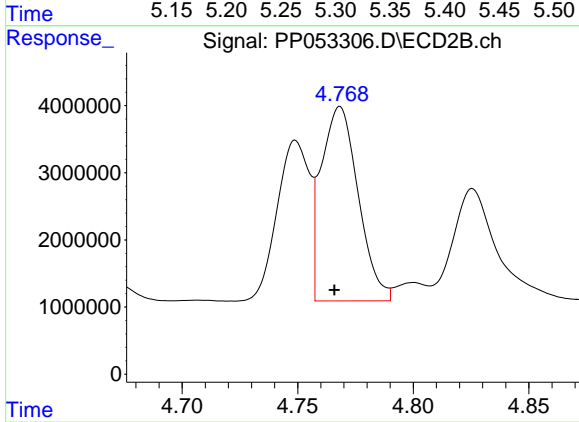
#11 AR-1232-1

R.T.: 4.029 min
 Delta R.T.: 0.002 min
 Response: 13819617
 Conc: 408.94 ng/ml



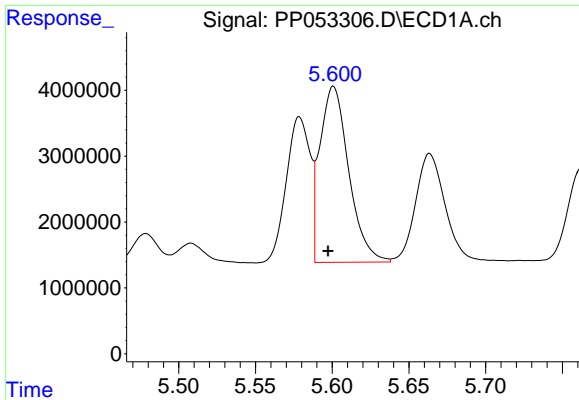
#12 AR-1232-2

R.T.: 5.309 min
 Delta R.T.: 0.003 min
 Response: 19015112
 Conc: 844.82 ng/ml



#12 AR-1232-2

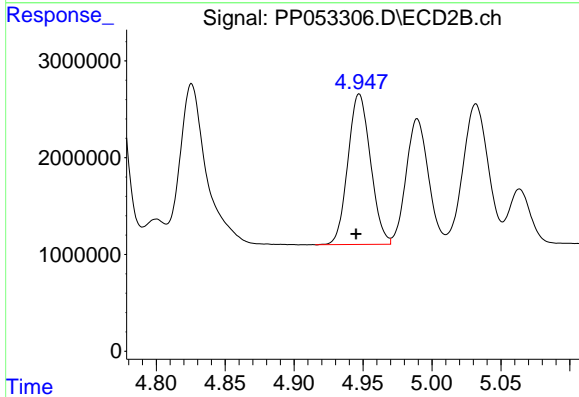
R.T.: 4.768 min
 Delta R.T.: 0.002 min
 Response: 32212799
 Conc: 925.50 ng/ml



#13 AR-1232-3

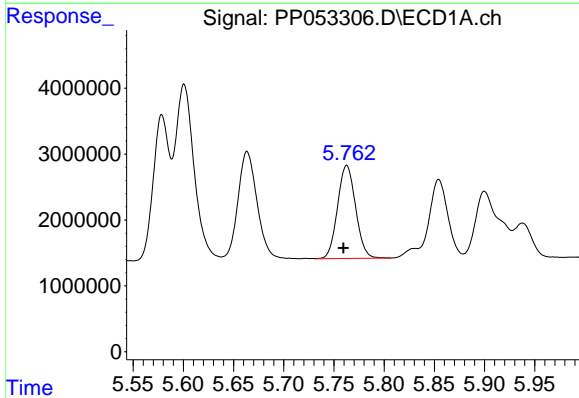
R.T.: 5.601 min
 Delta R.T.: 0.003 min
 Response: 34975199
 Conc: 861.72 ng/ml

Instrument :
 ECD_P
 ClientSampleId :



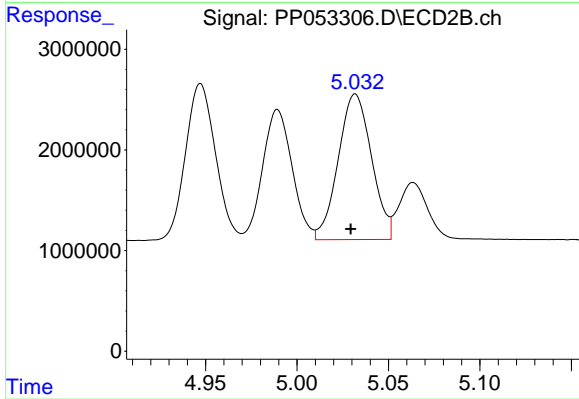
#13 AR-1232-3

R.T.: 4.947 min
 Delta R.T.: 0.002 min
 Response: 17744959
 Conc: 951.11 ng/ml



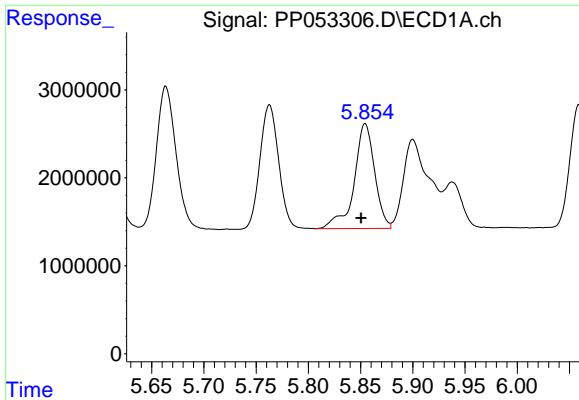
#14 AR-1232-4

R.T.: 5.763 min
 Delta R.T.: 0.003 min
 Response: 17764629
 Conc: 880.21 ng/ml



#14 AR-1232-4

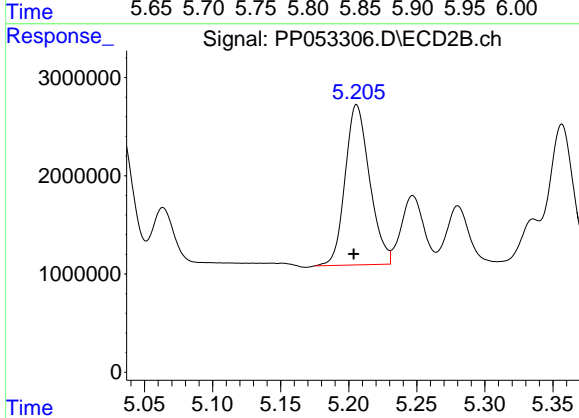
R.T.: 5.032 min
 Delta R.T.: 0.003 min
 Response: 18337795
 Conc: 1041.70 ng/ml



#15 AR-1232-5

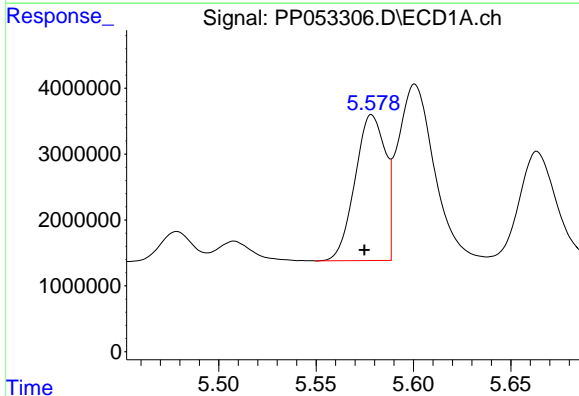
R.T.: 5.854 min
 Delta R.T.: 0.004 min
 Response: 16292110
 Conc: 982.58 ng/ml

Instrument :
 ECD_P
 ClientSampleId :



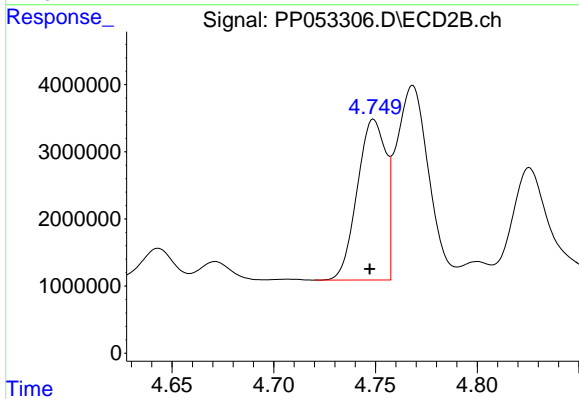
#15 AR-1232-5

R.T.: 5.206 min
 Delta R.T.: 0.002 min
 Response: 20412475
 Conc: 1025.64 ng/ml



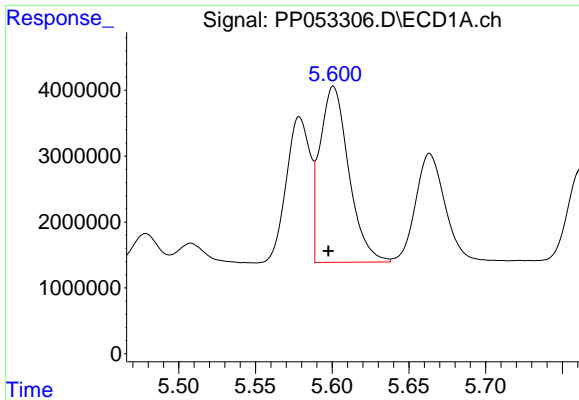
#16 AR-1242-1

R.T.: 5.579 min
 Delta R.T.: 0.004 min
 Response: 23915541
 Conc: 490.74 ng/ml



#16 AR-1242-1

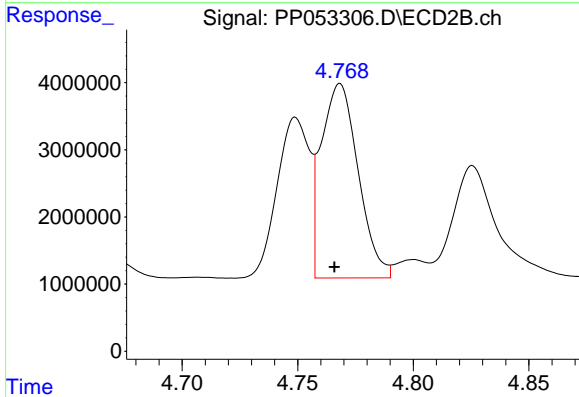
R.T.: 4.749 min
 Delta R.T.: 0.002 min
 Response: 23365130
 Conc: 529.95 ng/ml



#17 AR-1242-2

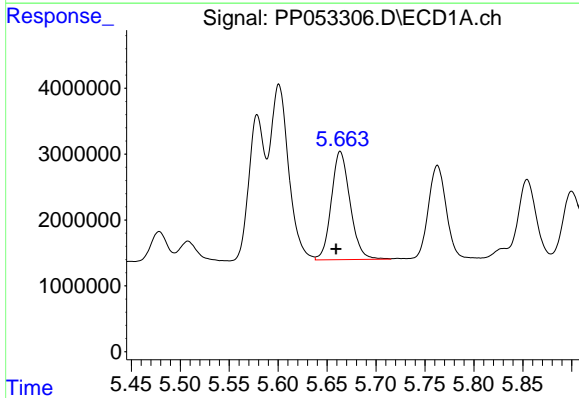
R.T.: 5.601 min
 Delta R.T.: 0.003 min
 Response: 34975199
 Conc: 485.13 ng/ml

Instrument :
 ECD_P
 ClientSampleId :



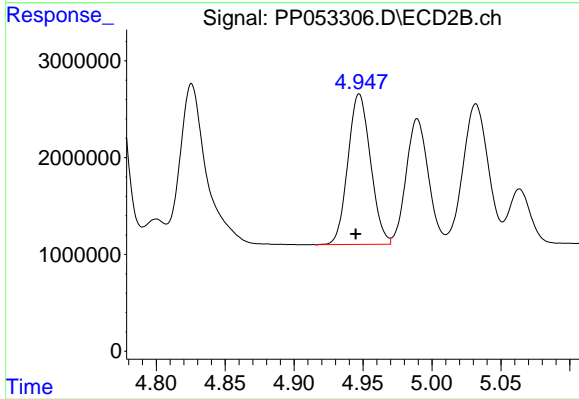
#17 AR-1242-2

R.T.: 4.768 min
 Delta R.T.: 0.002 min
 Response: 32212799
 Conc: 520.85 ng/ml



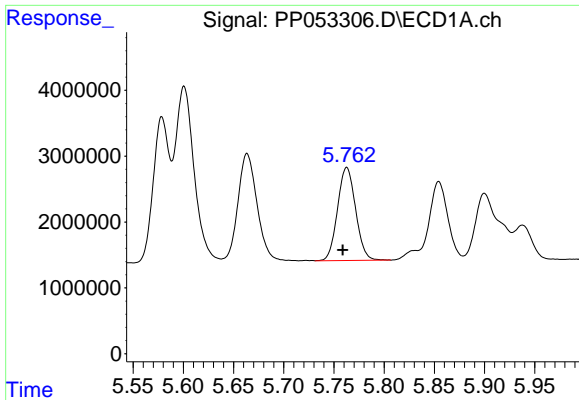
#18 AR-1242-3

R.T.: 5.664 min
 Delta R.T.: 0.005 min
 Response: 21894337
 Conc: 488.90 ng/ml



#18 AR-1242-3

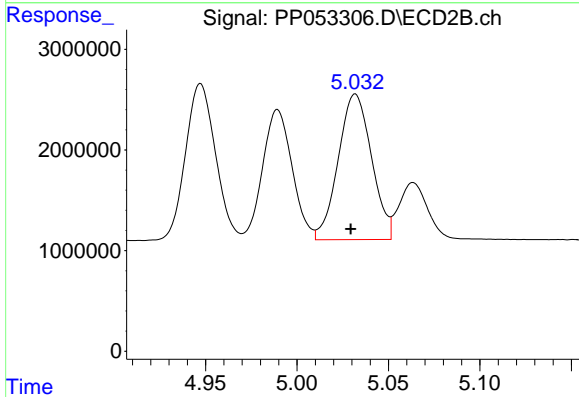
R.T.: 4.947 min
 Delta R.T.: 0.003 min
 Response: 17744959
 Conc: 534.31 ng/ml



#19 AR-1242-4

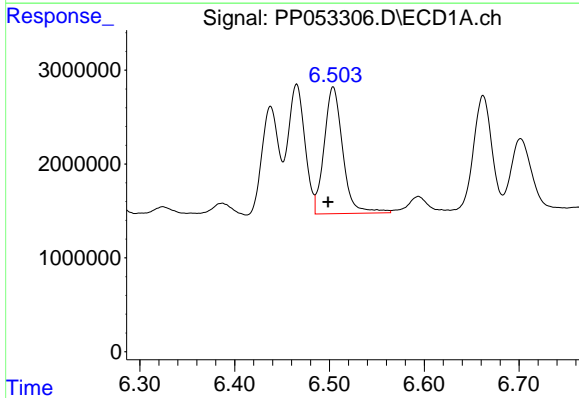
R.T.: 5.763 min
 Delta R.T.: 0.004 min
 Response: 17764629
 Conc: 493.96 ng/ml

Instrument :
 ECD_P
 ClientSampleId :



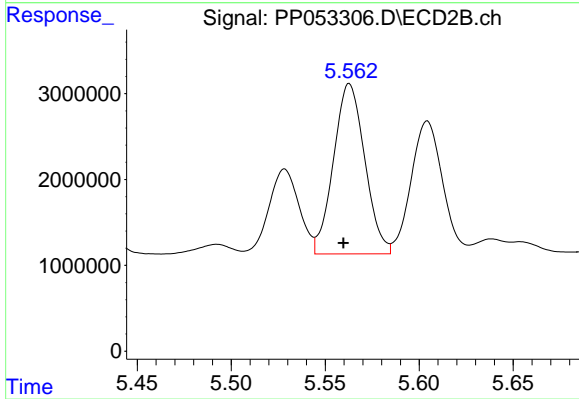
#19 AR-1242-4

R.T.: 5.032 min
 Delta R.T.: 0.003 min
 Response: 18337795
 Conc: 524.53 ng/ml



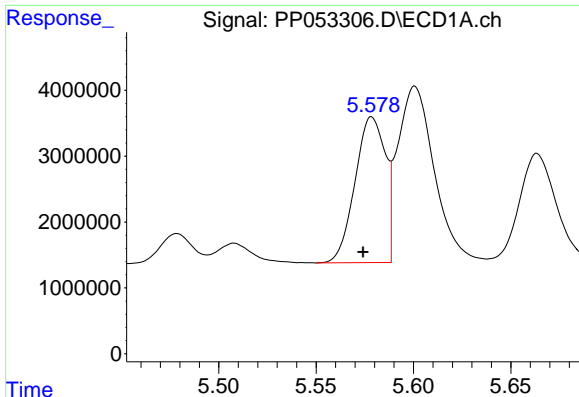
#20 AR-1242-5

R.T.: 6.504 min
 Delta R.T.: 0.005 min
 Response: 18399073
 Conc: 503.95 ng/ml



#20 AR-1242-5

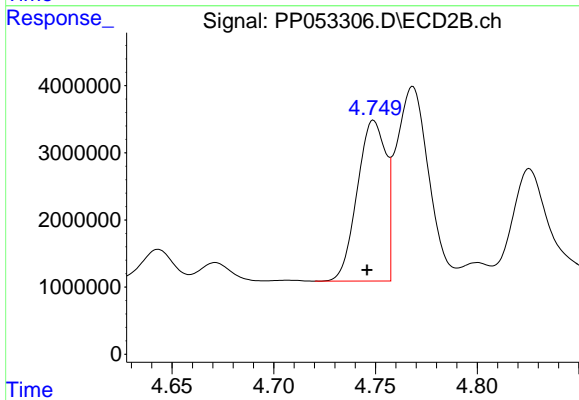
R.T.: 5.563 min
 Delta R.T.: 0.003 min
 Response: 23004300
 Conc: 525.32 ng/ml



#21 AR-1248-1

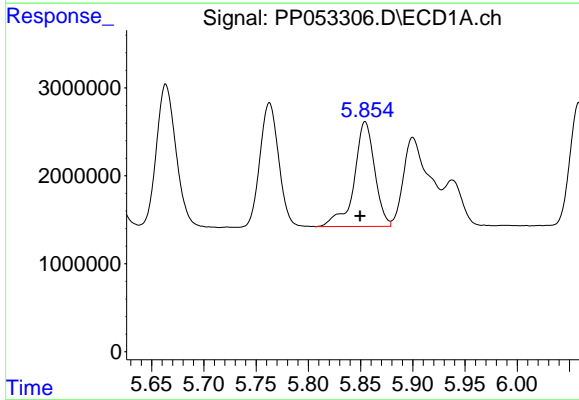
R.T.: 5.579 min
 Delta R.T.: 0.005 min
 Response: 23915541
 Conc: 641.21 ng/ml

Instrument :
 ECD_P
 ClientSampleId :



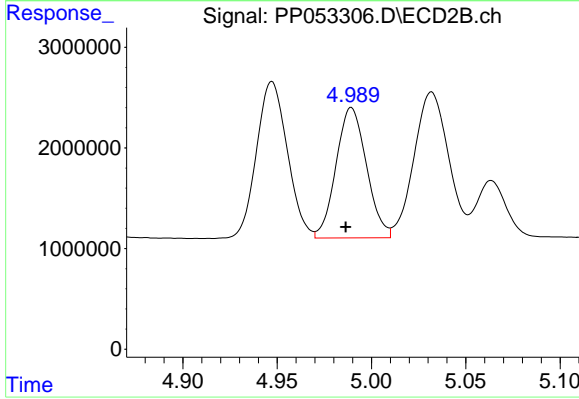
#21 AR-1248-1

R.T.: 4.749 min
 Delta R.T.: 0.003 min
 Response: 23365130
 Conc: 681.48 ng/ml



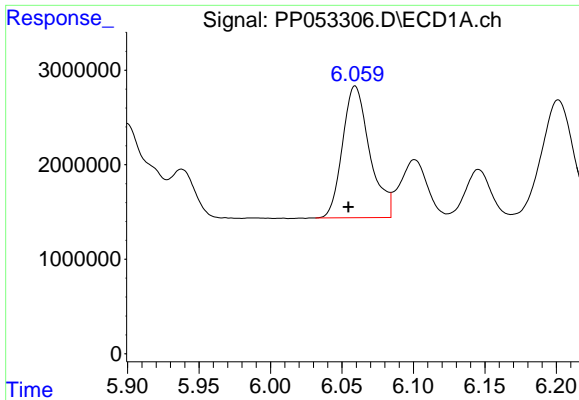
#22 AR-1248-2

R.T.: 5.854 min
 Delta R.T.: 0.005 min
 Response: 16292110
 Conc: 297.78 ng/ml



#22 AR-1248-2

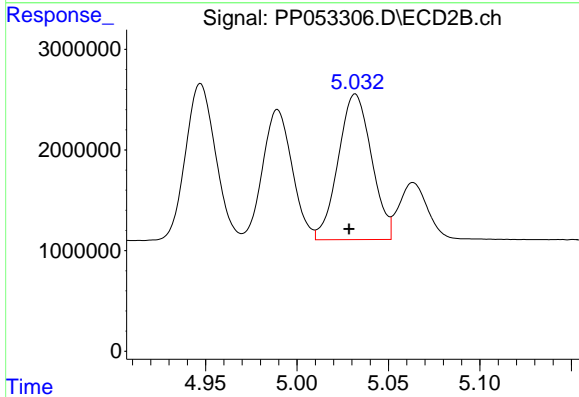
R.T.: 4.989 min
 Delta R.T.: 0.003 min
 Response: 14558787
 Conc: 303.17 ng/ml



#23 AR-1248-3

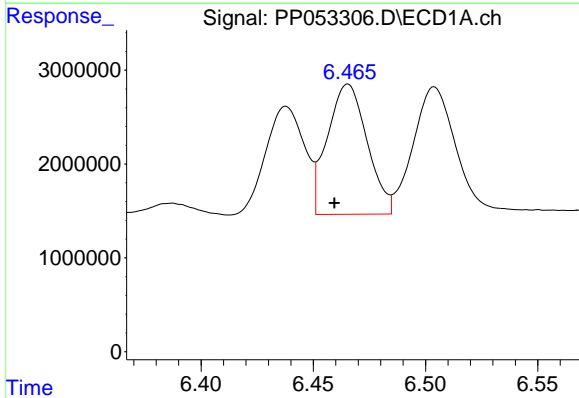
R.T.: 6.059 min
 Delta R.T.: 0.005 min
 Response: 18460549
 Conc: 309.80 ng/ml

Instrument :
 ECD_P
 ClientSampleId :



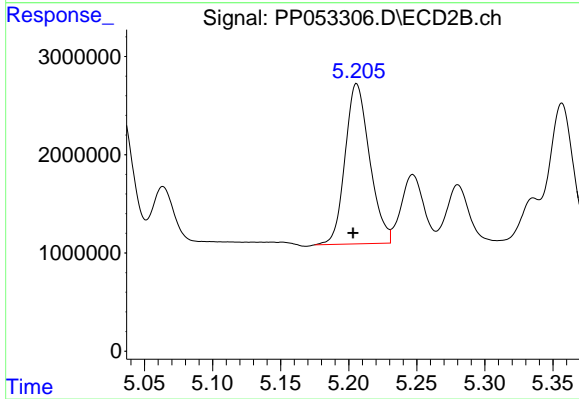
#23 AR-1248-3

R.T.: 5.032 min
 Delta R.T.: 0.003 min
 Response: 18337795
 Conc: 370.07 ng/ml



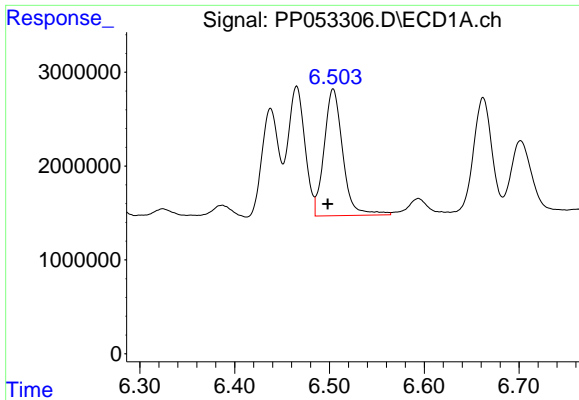
#24 AR-1248-4

R.T.: 6.465 min
 Delta R.T.: 0.006 min
 Response: 17066310
 Conc: 276.62 ng/ml



#24 AR-1248-4

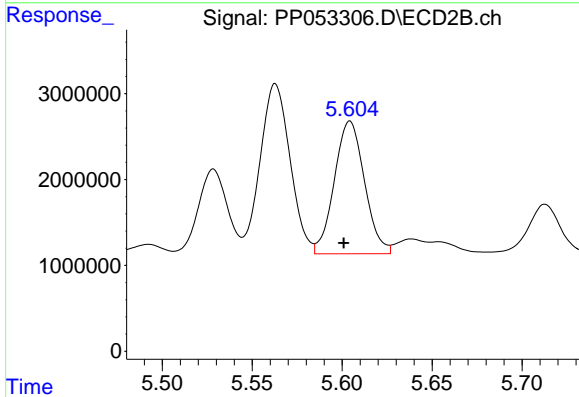
R.T.: 5.206 min
 Delta R.T.: 0.003 min
 Response: 20412475
 Conc: 345.63 ng/ml



#25 AR-1248-5

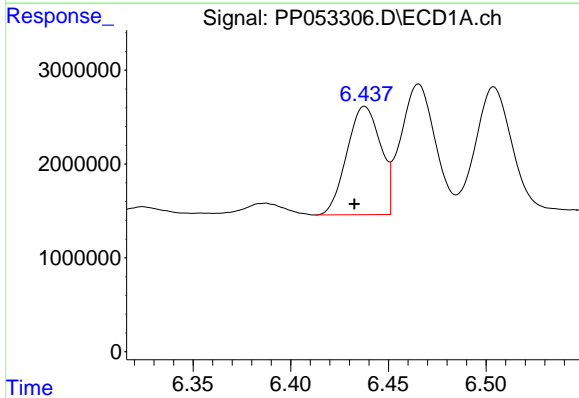
R.T.: 6.504 min
 Delta R.T.: 0.006 min
 Response: 18399073
 Conc: 305.01 ng/ml

Instrument :
 ECD_P
 ClientSampleId :



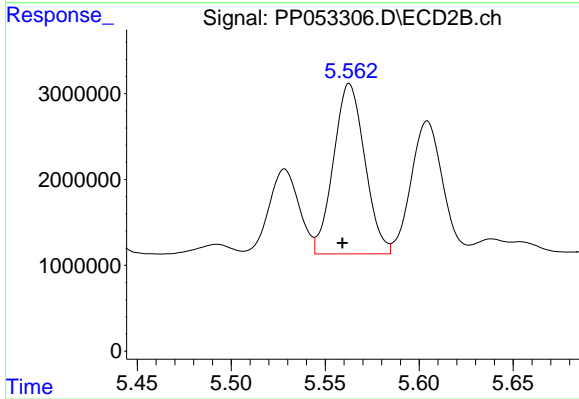
#25 AR-1248-5

R.T.: 5.604 min
 Delta R.T.: 0.003 min
 Response: 18067625
 Conc: 328.42 ng/ml



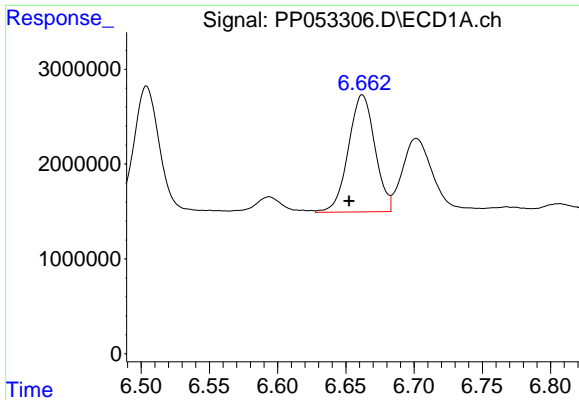
#26 AR-1254-1

R.T.: 6.438 min
 Delta R.T.: 0.005 min
 Response: 13866449
 Conc: 196.14 ng/ml



#26 AR-1254-1

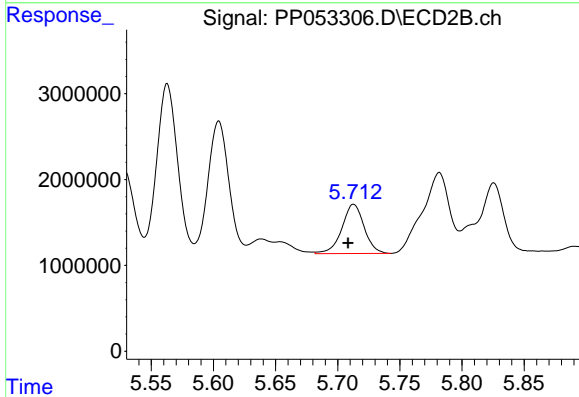
R.T.: 5.563 min
 Delta R.T.: 0.004 min
 Response: 23004300
 Conc: 253.77 ng/ml



#27 AR-1254-2

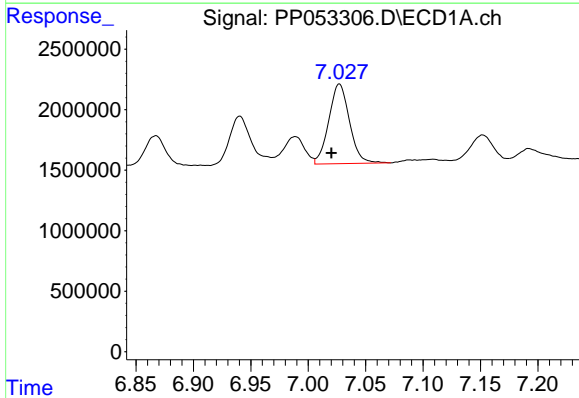
R.T.: 6.662 min
 Delta R.T.: 0.010 min
 Response: 16706125
 Conc: 159.03 ng/ml

Instrument :
 ECD_P
 ClientSampleId :



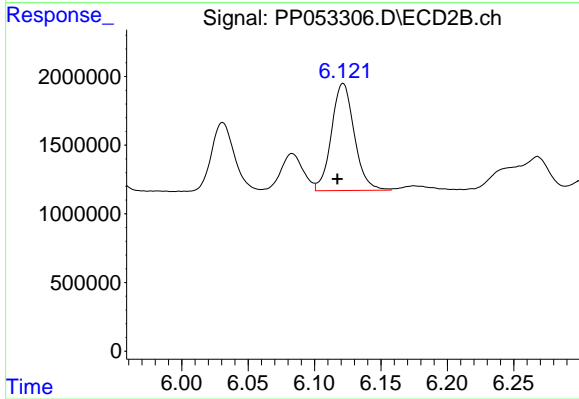
#27 AR-1254-2

R.T.: 5.713 min
 Delta R.T.: 0.004 min
 Response: 7159887
 Conc: 88.18 ng/ml



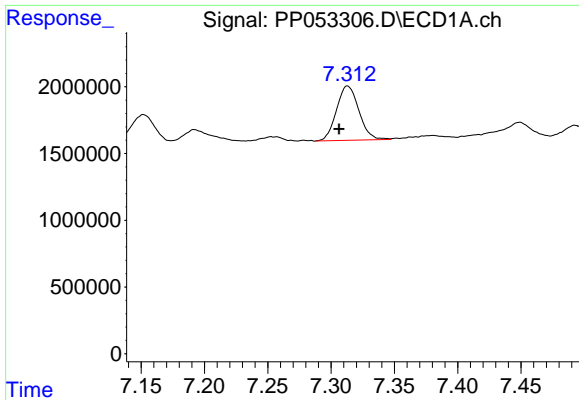
#28 AR-1254-3

R.T.: 7.027 min
 Delta R.T.: 0.007 min
 Response: 8267825
 Conc: 80.60 ng/ml



#28 AR-1254-3

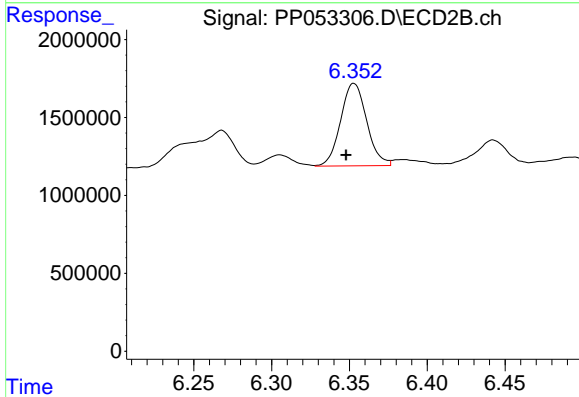
R.T.: 6.122 min
 Delta R.T.: 0.004 min
 Response: 9350244
 Conc: 73.56 ng/ml



#29 AR-1254-4

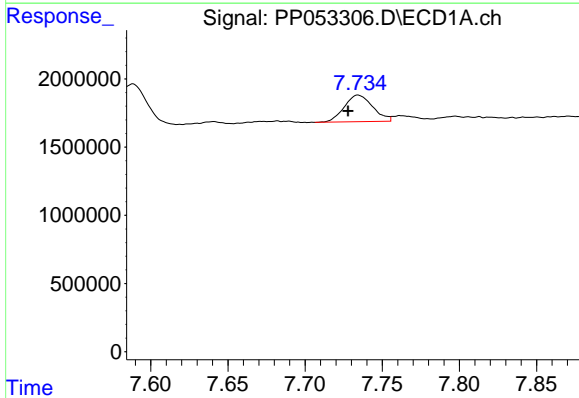
R.T.: 7.313 min
 Delta R.T.: 0.007 min
 Response: 4998474
 Conc: 71.85 ng/ml

Instrument :
 ECD_P
 ClientSampleId :



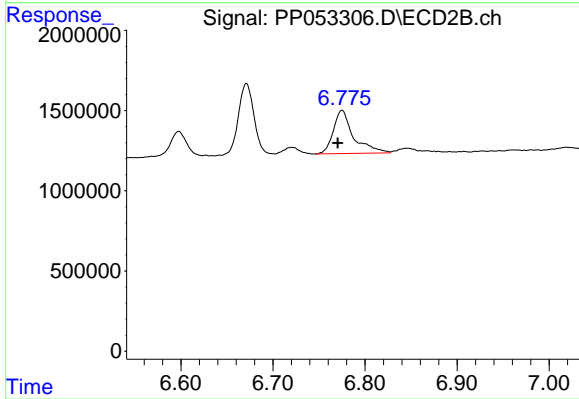
#29 AR-1254-4

R.T.: 6.353 min
 Delta R.T.: 0.005 min
 Response: 6188484
 Conc: 78.48 ng/ml



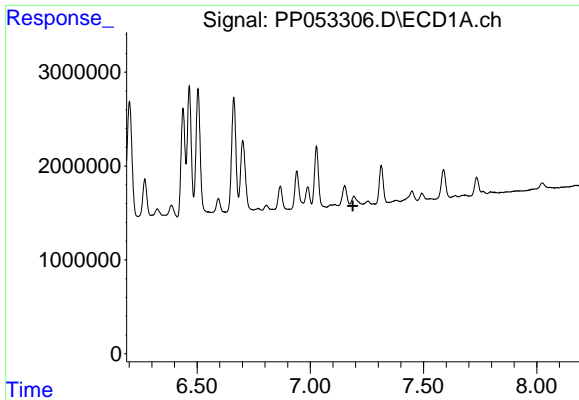
#30 AR-1254-5

R.T.: 7.734 min
 Delta R.T.: 0.007 min
 Response: 2500714
 Conc: 31.57 ng/ml



#30 AR-1254-5

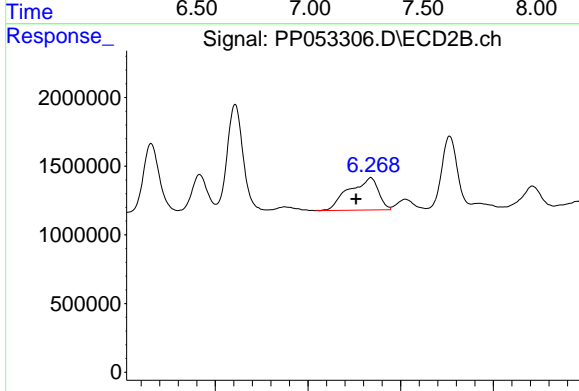
R.T.: 6.775 min
 Delta R.T.: 0.005 min
 Response: 4101226
 Conc: 32.47 ng/ml



#31 AR-1260-1

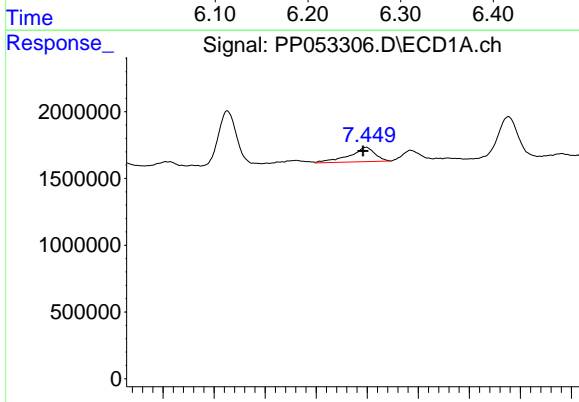
R.T.: 7.192 min
 Delta R.T.: 0.004 min
 Response: -168110
 Conc: N.D.

Instrument :
 ECD_P
 ClientSampleId :



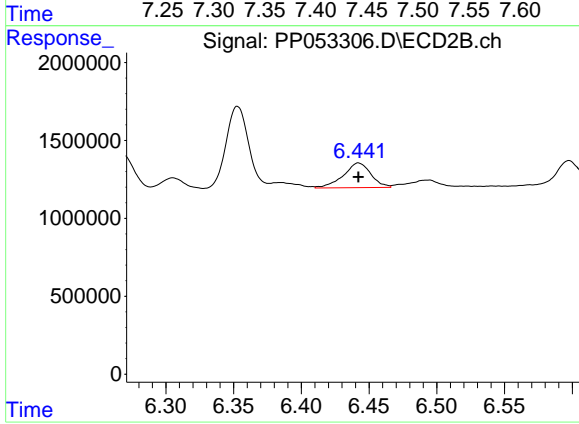
#31 AR-1260-1

R.T.: 6.268 min
 Delta R.T.: 0.016 min
 Response: 5162168
 Conc: 56.31 ng/ml



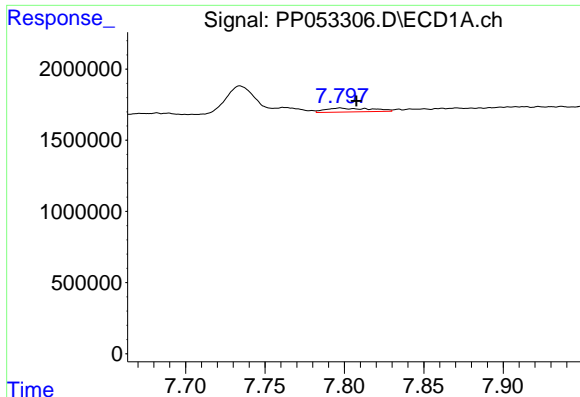
#32 AR-1260-2

R.T.: 7.449 min
 Delta R.T.: 0.003 min
 Response: 1872981
 Conc: 20.22 ng/ml



#32 AR-1260-2

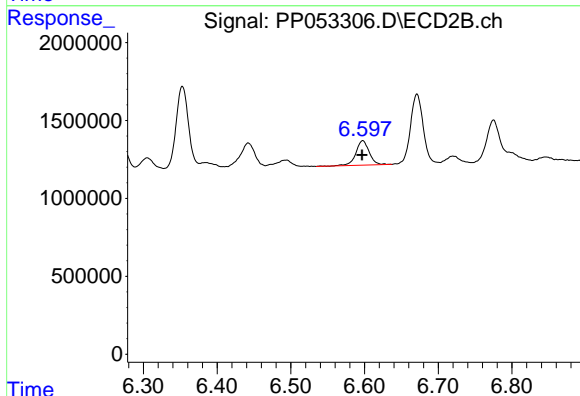
R.T.: 6.442 min
 Delta R.T.: 0.000 min
 Response: 2250635
 Conc: 19.56 ng/ml



#33 AR-1260-3

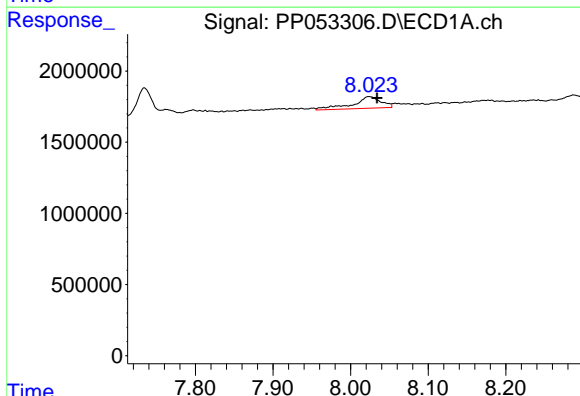
R.T.: 7.797 min
 Delta R.T.: -0.010 min
 Response: 547681
 Conc: 8.78 ng/ml

Instrument :
 ECD_P
 ClientSampleId :



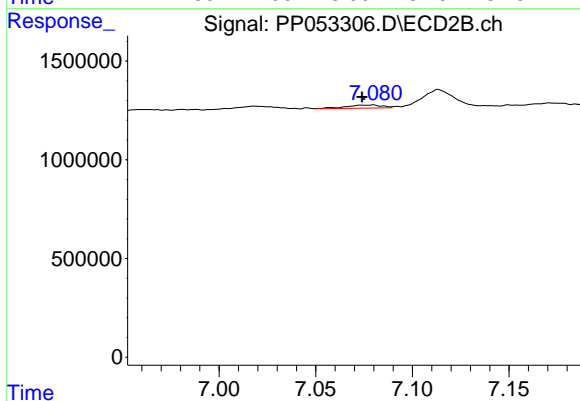
#33 AR-1260-3

R.T.: 6.598 min
 Delta R.T.: 0.000 min
 Response: 1998952
 Conc: 18.63 ng/ml



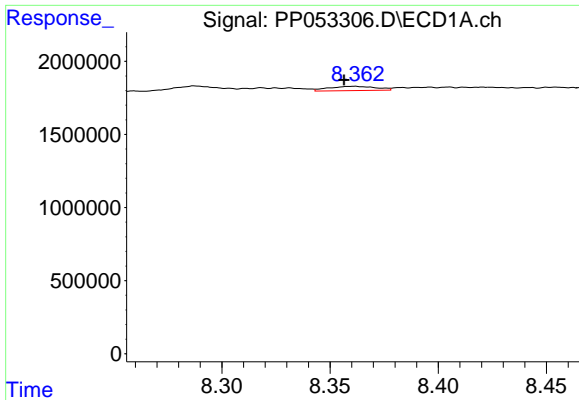
#34 AR-1260-4

R.T.: 8.024 min
 Delta R.T.: -0.010 min
 Response: 2067273
 Conc: 27.60 ng/ml



#34 AR-1260-4

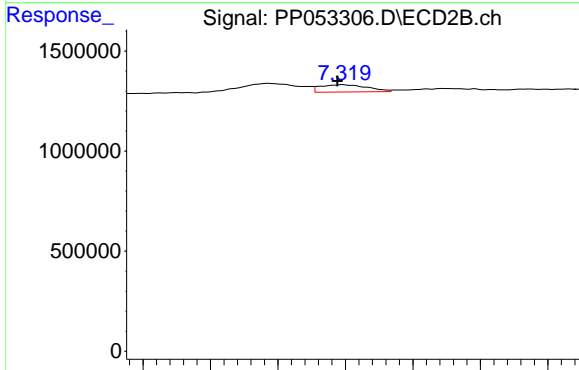
R.T.: 7.079 min
 Delta R.T.: 0.005 min
 Response: 202918
 Conc: 2.45 ng/ml



#35 AR-1260-5

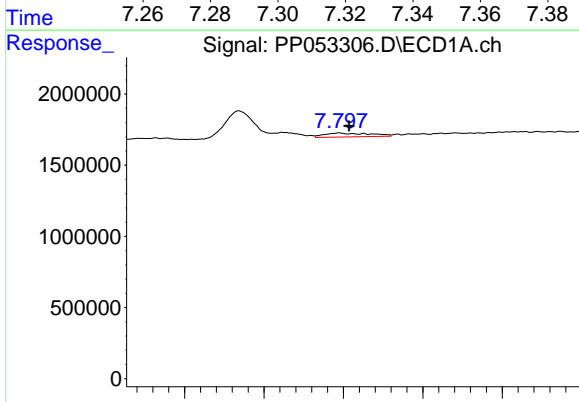
R.T.: 8.361 min
 Delta R.T.: 0.004 min
 Response: 437585
 Conc: 3.46 ng/ml

Instrument :
 ECD_P
 ClientSampleId :



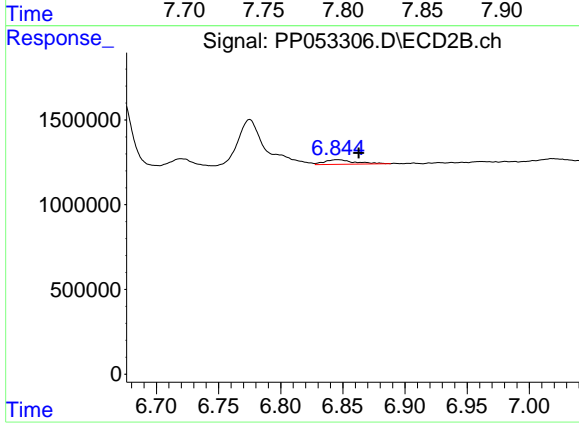
#35 AR-1260-5

R.T.: 7.319 min
 Delta R.T.: 0.002 min
 Response: 353882
 Conc: 1.87 ng/ml



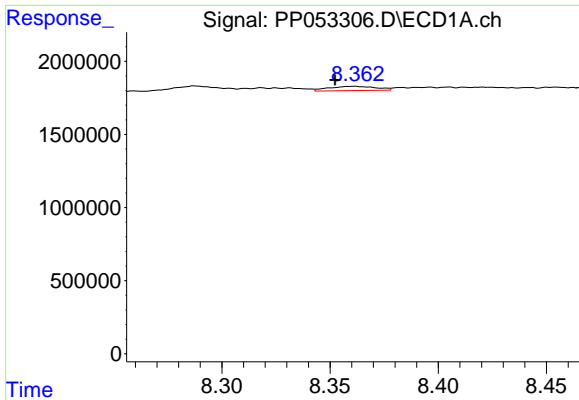
#36 AR-1262-1

R.T.: 7.797 min
 Delta R.T.: -0.006 min
 Response: 547681
 Conc: 5.70 ng/ml



#36 AR-1262-1

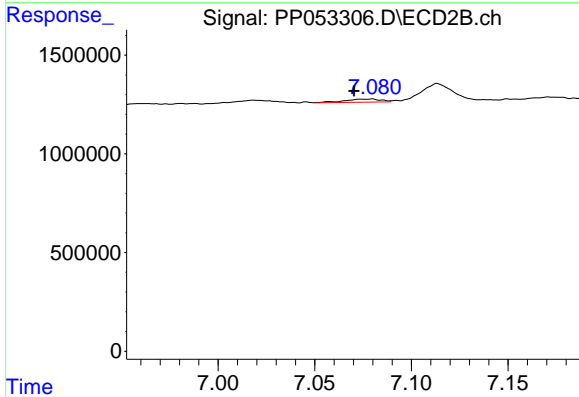
R.T.: 6.846 min
 Delta R.T.: -0.017 min
 Response: 449074
 Conc: 8.53 ng/ml



#37 AR-1262-2

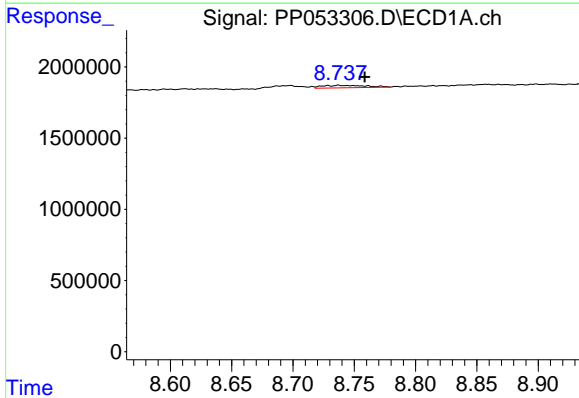
R.T.: 8.361 min
 Delta R.T.: 0.009 min
 Response: 437585
 Conc: 2.89 ng/ml

Instrument :
 ECD_P
 ClientSampleId :



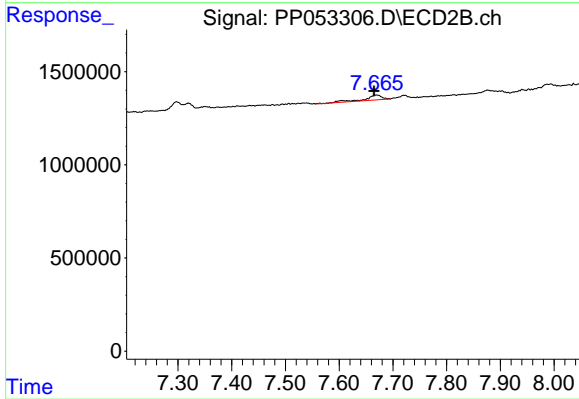
#37 AR-1262-2

R.T.: 7.079 min
 Delta R.T.: 0.009 min
 Response: 202918
 Conc: 1.75 ng/ml



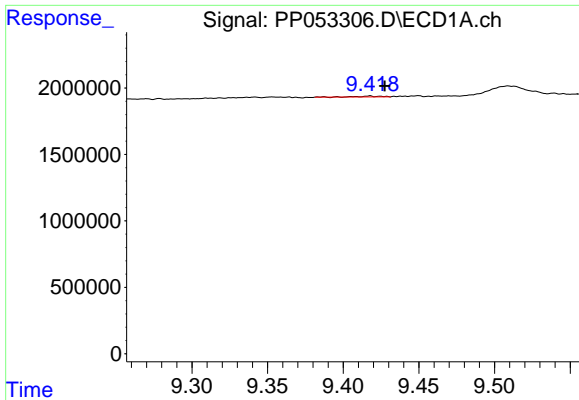
#39 AR-1262-4

R.T.: 8.737 min
 Delta R.T.: -0.021 min
 Response: 432629
 Conc: 5.35 ng/ml



#39 AR-1262-4

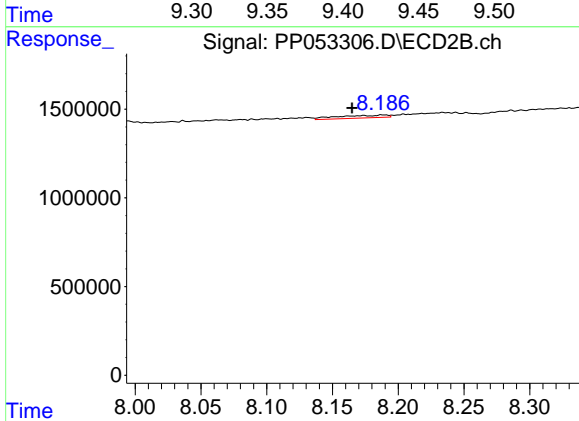
R.T.: 7.666 min
 Delta R.T.: 0.001 min
 Response: 588030
 Conc: 3.59 ng/ml



#40 AR-1262-5

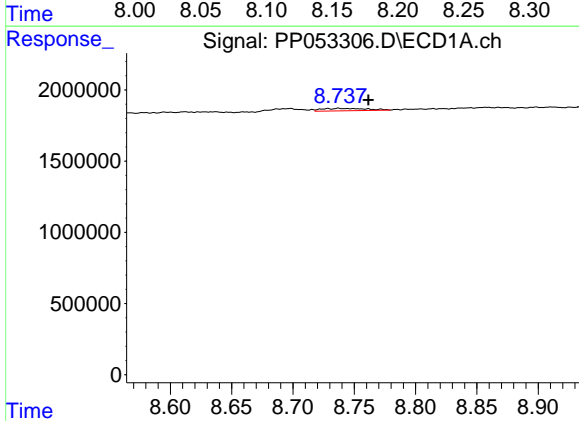
R.T.: 9.418 min
 Delta R.T.: -0.010 min
 Response: 71640
 Conc: 1.41 ng/ml

Instrument :
 ECD_P
 ClientSampleId :



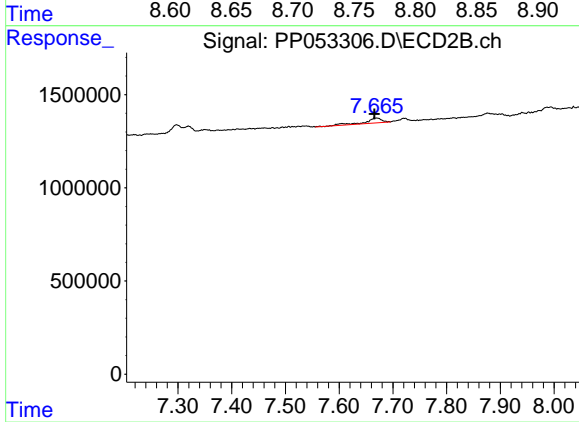
#40 AR-1262-5

R.T.: 8.188 min
 Delta R.T.: 0.023 min
 Response: 421481
 Conc: 5.55 ng/ml



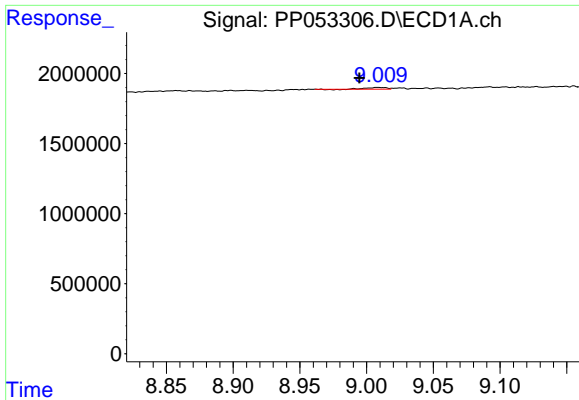
#42 AR-1268-2

R.T.: 8.737 min
 Delta R.T.: -0.024 min
 Response: 432629
 Conc: 2.55 ng/ml



#42 AR-1268-2

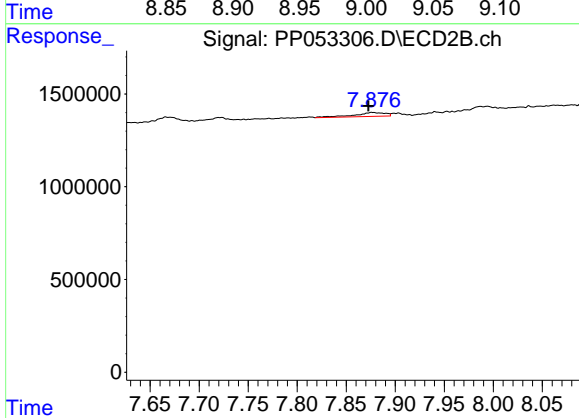
R.T.: 7.666 min
 Delta R.T.: 0.000 min
 Response: 588030
 Conc: 2.46 ng/ml



#43 AR-1268-3

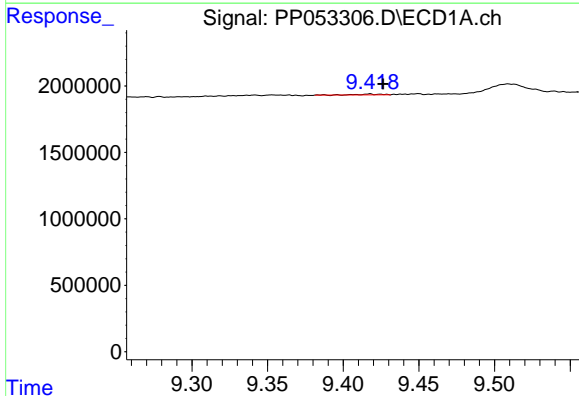
R.T.: 9.009 min
 Delta R.T.: 0.014 min
 Response: 109392
 Conc: 0.73 ng/ml

Instrument :
 ECD_P
 ClientSampleId :



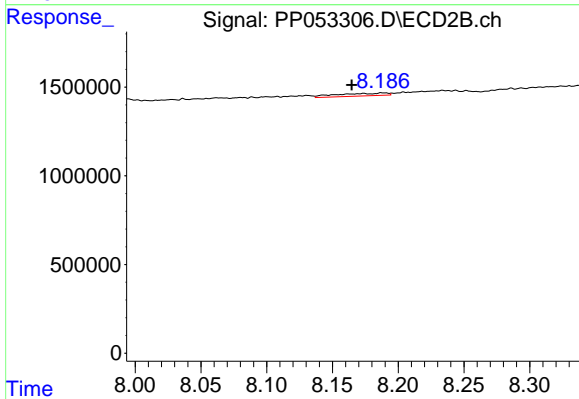
#43 AR-1268-3

R.T.: 7.877 min
 Delta R.T.: 0.004 min
 Response: 454574
 Conc: 2.21 ng/ml



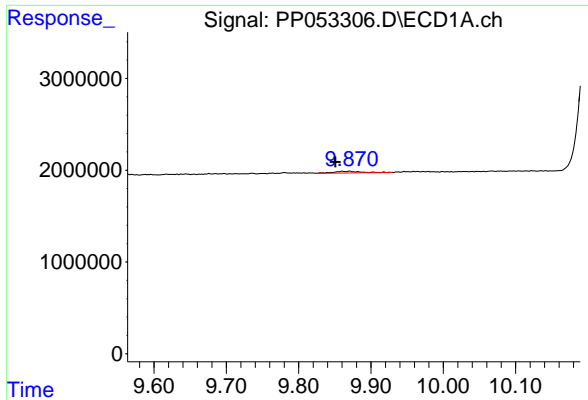
#44 AR-1268-4

R.T.: 9.418 min
 Delta R.T.: -0.008 min
 Response: 71640
 Conc: 1.28 ng/ml



#44 AR-1268-4

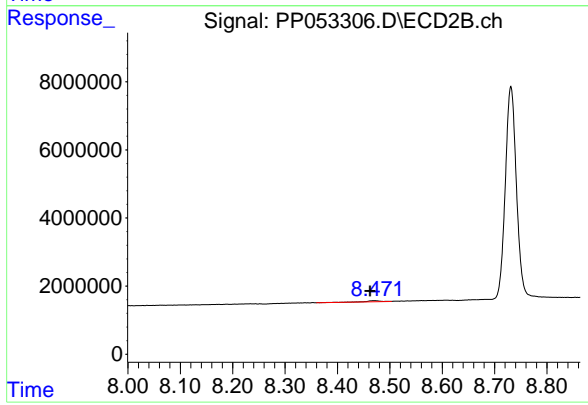
R.T.: 8.188 min
 Delta R.T.: 0.023 min
 Response: 421481
 Conc: 5.12 ng/ml



#45 AR-1268-5

R.T.: 9.869 min
 Delta R.T.: 0.018 min
 Response: 494133
 Conc: 1.07 ng/ml

Instrument :
 ECD_P
 ClientSampleId :



#45 AR-1268-5

R.T.: 8.471 min
 Delta R.T.: 0.009 min
 Response: 681928
 Conc: 1.03 ng/ml