

Data Path : Z:\pestpcbsrv\HPCHEM1\ECD_P\Data\PP111122\
 Data File : PP053301.D
 Signal(s) : Signal #1: ECD1A.ch Signal #2: ECD2B.ch
 Acq On : 11 Nov 2022 18:10
 Operator : YP\AJ
 Sample : AR1254CCC500
 Misc :
 ALS Vial : 6 Sample Multiplier: 1

Instrument :
 ECD_P
ClientSampleId :
 AR1254CCC500

Integration File signal 1: autoint1.e
 Integration File signal 2: autoint2.e
 Quant Time: Nov 11 20:24:52 2022
 Quant Method : Z:\pestpcbsrv\HPCHEM1\ECD_P\methods\PP110822.M
 Quant Title : GC EXTRACTABLES
 QLast Update : Wed Nov 09 05:50:05 2022
 Response via : Initial Calibration
 Integrator: ChemStation

Volume Inj. : 2 µl
 Signal #1 Phase : ZB-MR1 Signal #2 Phase: ZB-MR2
 Signal #1 Info : 30Mx0.32mmx 0.50µ Signal #2 Info : 30M x 0.32mm x 0.25µm

Compound	RT#1	RT#2	Resp#1	Resp#2	ng/ml	ng/ml

System Monitoring Compounds						
1) SA Tetrachlo...	4.405	3.649	103.2E6	89909432	53.671	59.770
2) SA Decachlor...	10.210	8.731	74243746	96609406	54.754	51.543
Target Compounds						
26) L6 AR-1254-1	6.439	5.563	37601234	51741847	531.868	570.784
27) L6 AR-1254-2	6.658	5.712	55506207	44824590	528.381	552.062
28) L6 AR-1254-3	7.026	6.122	53179060	69333499	518.449	545.441
29) L6 AR-1254-4	7.312	6.353	38072496	42736273	547.267	541.969
30) L6 AR-1254-5	7.734	6.775	40241641	67269006	508.058	532.573

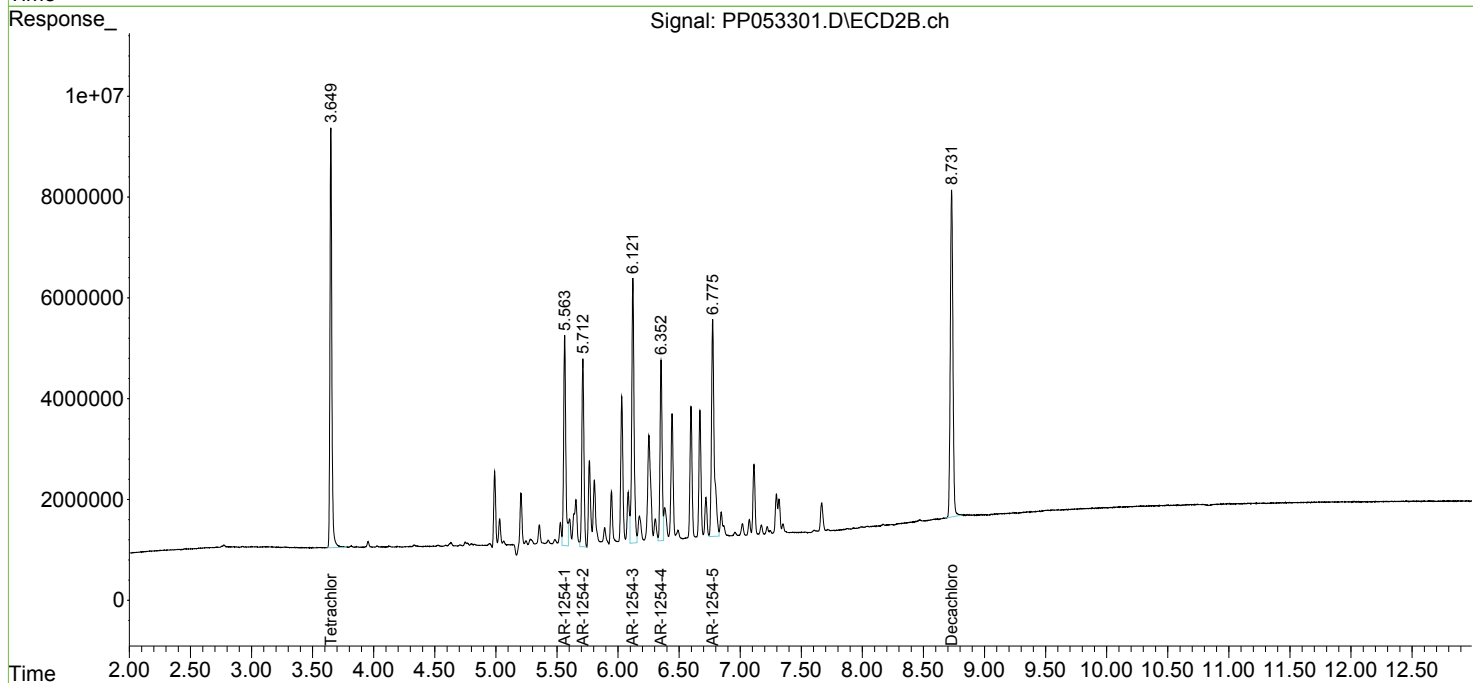
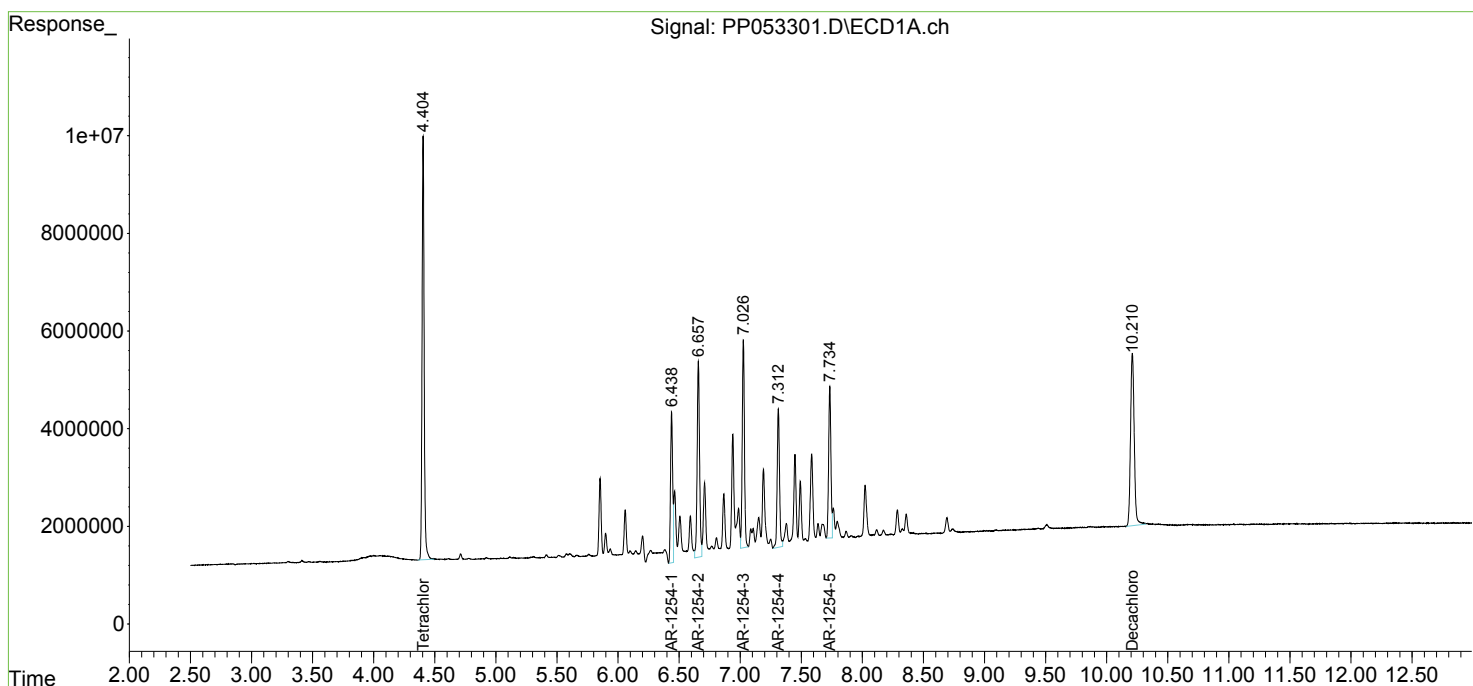
(f)=RT Delta > 1/2 Window (#)=Amounts differ by > 25% (m)=manual int.

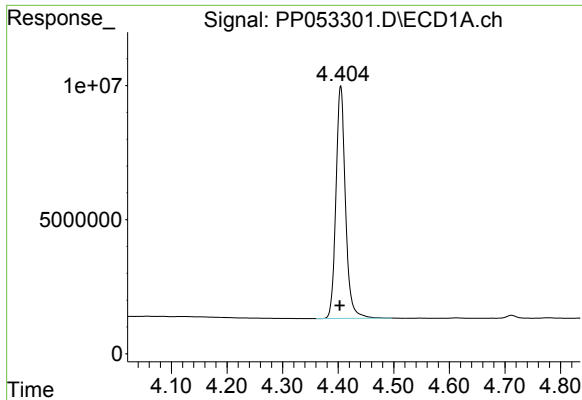
Data Path : Z:\pestpcbsrv\HPCHEM1\ECD_P\Data\PP111122\
 Data File : PP053301.D
 Signal(s) : Signal #1: ECD1A.ch Signal #2: ECD2B.ch
 Acq On : 11 Nov 2022 18:10
 Operator : YP\AJ
 Sample : AR1254CCC500
 Misc :
 ALS Vial : 6 Sample Multiplier: 1

Instrument :
 ECD_P
 ClientSampleId :
 AR1254CCC500

Integration File signal 1: autoint1.e
 Integration File signal 2: autoint2.e
 Quant Time: Nov 11 20:24:52 2022
 Quant Method : Z:\pestpcbsrv\HPCHEM1\ECD_P\methods\PP110822.M
 Quant Title : GC EXTRACTABLES
 QLast Update : Wed Nov 09 05:50:05 2022
 Response via : Initial Calibration
 Integrator: ChemStation

Volume Inj. : 2 µl
 Signal #1 Phase : ZB-MR1 Signal #2 Phase: ZB-MR2
 Signal #1 Info : 30Mx0.32mmx 0.50µ Signal #2 Info : 30M x 0.32mm x 0.25µm

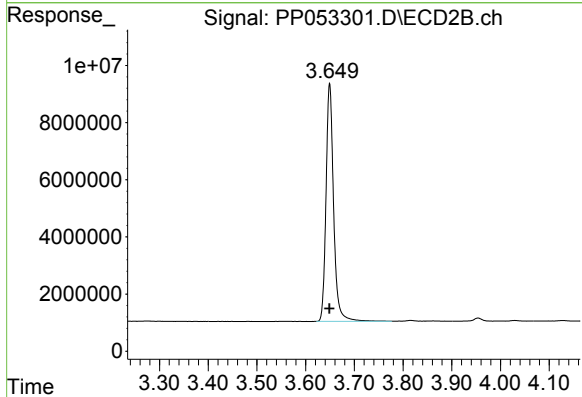




#1 Tetrachloro-m-xylene

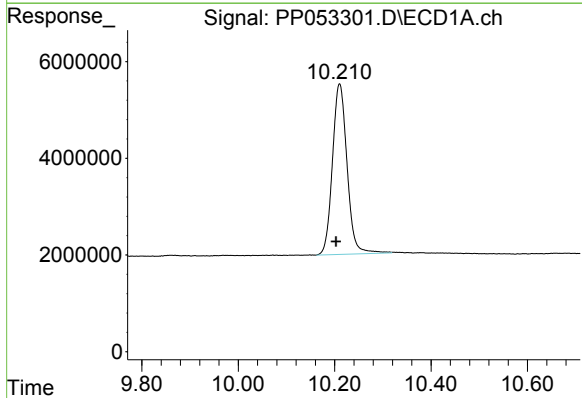
R.T.: 4.405 min
 Delta R.T.: 0.002 min
 Response: 103173568
 Conc: 53.67 ng/ml

Instrument :
 ECD_P
 ClientSampleId :
 AR1254CCC500



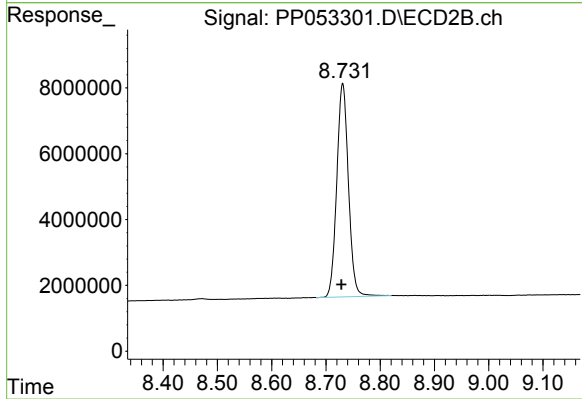
#1 Tetrachloro-m-xylene

R.T.: 3.649 min
 Delta R.T.: 0.000 min
 Response: 89909432
 Conc: 59.77 ng/ml



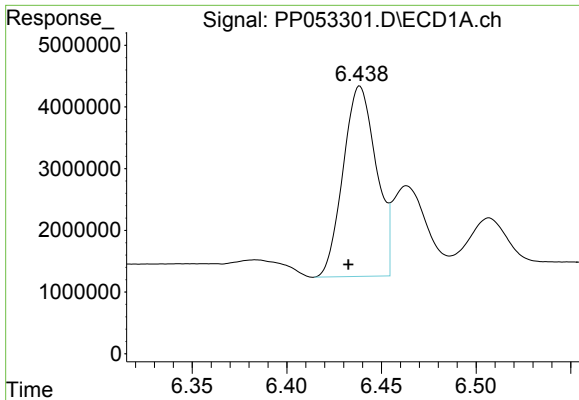
#2 Decachlorobiphenyl

R.T.: 10.210 min
 Delta R.T.: 0.008 min
 Response: 74243746
 Conc: 54.75 ng/ml



#2 Decachlorobiphenyl

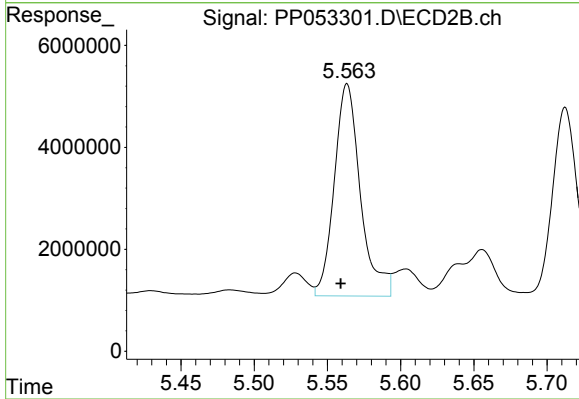
R.T.: 8.731 min
 Delta R.T.: 0.002 min
 Response: 96609406
 Conc: 51.54 ng/ml



#26 AR-1254-1

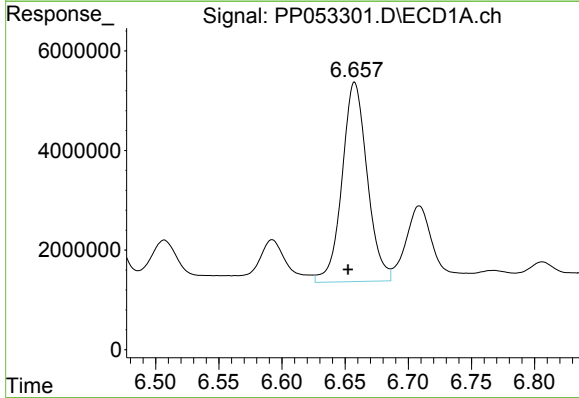
R.T.: 6.439 min
 Delta R.T.: 0.006 min
 Response: 37601234
 Conc: 531.87 ng/ml

Instrument :
 ECD_P
 ClientSampleId :
 AR1254CCC500



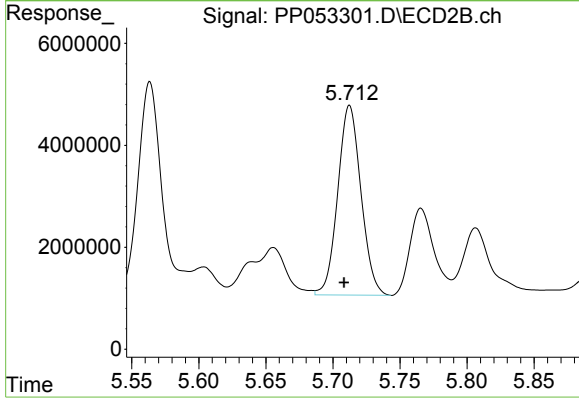
#26 AR-1254-1

R.T.: 5.563 min
 Delta R.T.: 0.004 min
 Response: 51741847
 Conc: 570.78 ng/ml



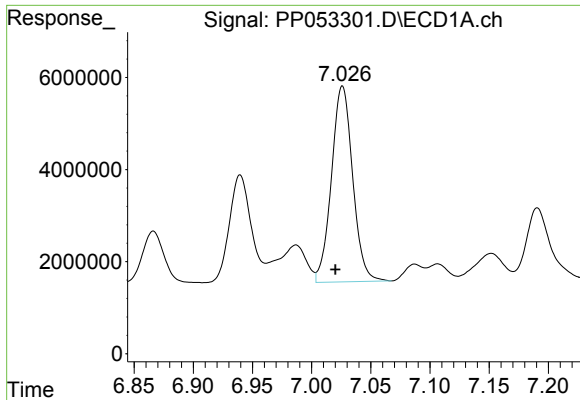
#27 AR-1254-2

R.T.: 6.658 min
 Delta R.T.: 0.005 min
 Response: 55506207
 Conc: 528.38 ng/ml



#27 AR-1254-2

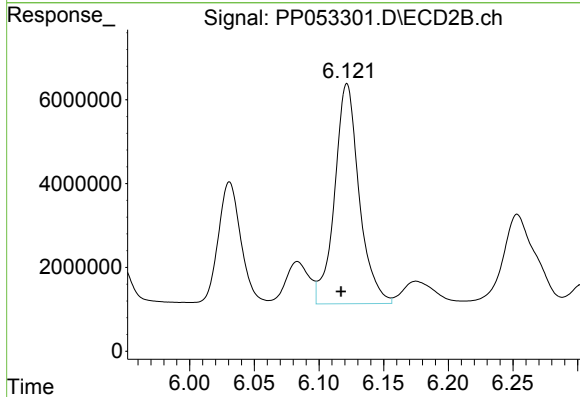
R.T.: 5.712 min
 Delta R.T.: 0.004 min
 Response: 44824590
 Conc: 552.06 ng/ml



#28 AR-1254-3

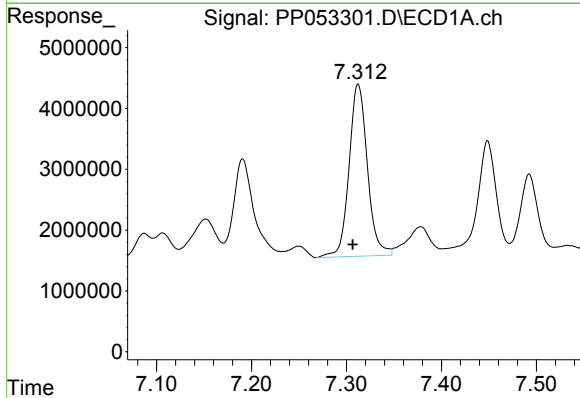
R.T.: 7.026 min
Delta R.T.: 0.006 min
Response: 53179060
Conc: 518.45 ng/ml

Instrument :
ECD_P
ClientSampleId :
AR1254CCC500



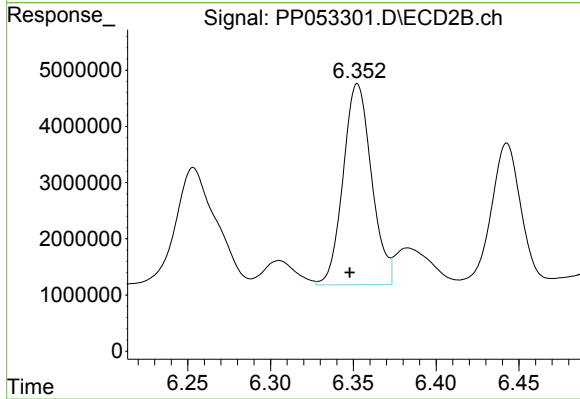
#28 AR-1254-3

R.T.: 6.122 min
Delta R.T.: 0.004 min
Response: 69333499
Conc: 545.44 ng/ml



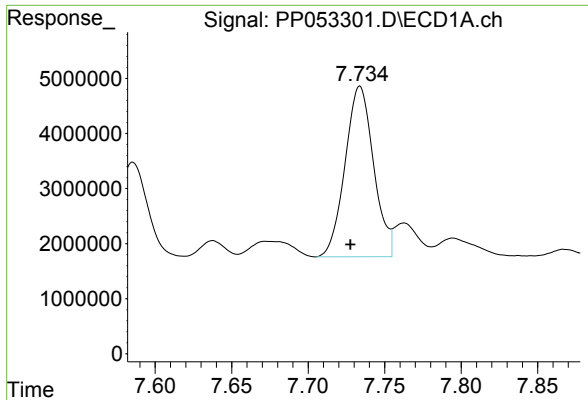
#29 AR-1254-4

R.T.: 7.312 min
Delta R.T.: 0.006 min
Response: 38072496
Conc: 547.27 ng/ml



#29 AR-1254-4

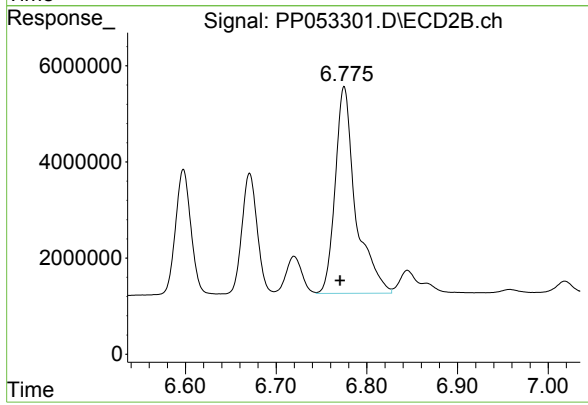
R.T.: 6.353 min
Delta R.T.: 0.005 min
Response: 42736273
Conc: 541.97 ng/ml



#30 AR-1254-5

R.T.: 7.734 min
Delta R.T.: 0.006 min
Response: 40241641
Conc: 508.06 ng/ml

Instrument :
ECD_P
ClientSampleId :
AR1254CCC500



#30 AR-1254-5

R.T.: 6.775 min
Delta R.T.: 0.005 min
Response: 67269006
Conc: 532.57 ng/ml