

Data Path : Z:\pestpcbsrv\HPCHEM1\ECD_P\Data\PP111124\
 Data File : PP068437.D
 Signal(s) : Signal #1: ECD1A.ch Signal #2: ECD2B.ch
 Acq On : 11 Nov 2024 22:12
 Operator : YP\AJ
 Sample : P4792-04
 Misc :
 ALS Vial : 34 Sample Multiplier: 1

Instrument :
 ECD_P
 ClientSampleId :

Integration File signal 1: autoint1.e
 Integration File signal 2: autoint2.e
 Quant Time: Nov 12 02:14:05 2024
 Quant Method : Z:\pestpcbsrv\HPCHEM1\ECD_P\methods\PP110724.M
 Quant Title : GC EXTRACTABLES
 QLast Update : Fri Nov 08 11:04:08 2024
 Response via : Initial Calibration
 Integrator: ChemStation

Volume Inj. : 2 µl
 Signal #1 Phase : ZB-MR1 Signal #2 Phase: ZB-MR2
 Signal #1 Info : 30Mx0.32mmx 0.50µ Signal #2 Info : 30M x 0.32mm x 0.25µm

Compound	RT#1	RT#2	Resp#1	Resp#2	ng/ml	ng/ml
System Monitoring Compounds						
1) SA Tetrachlo...	4.761	4.052	7258173	7157942	7.478	7.392
2) SA Decachlor...	10.679	9.211	10630319	5254550	8.494	4.645 #
Target Compounds						
3) L1 AR-1016-1	5.853f	5.177	12403269	5021913	345.148	151.962 #
4) L1 AR-1016-2	0.000	5.177	0	5021913	N.D.	107.438 #
5) L1 AR-1016-3	0.000	5.372	0	791895	N.D.	29.286 #
6) L1 AR-1016-4	6.154f	5.407	283305	2186920	10.779	92.686 #
7) L1 AR-1016-5	6.412	5.614	1006070	283752	35.666	9.573 #
8) L2 AR-1221-1	0.000	4.265	0	564578	N.D.	44.771 #
9) L2 AR-1221-2	5.074	4.369	1095455	551867	108.616	56.469 #
10) L2 AR-1221-3	5.148	4.447	670359	285128	22.153	9.351 #
11) L3 AR-1232-1	5.148	4.447	670359	285128	28.747	12.081 #
12) L3 AR-1232-2	5.671	5.177	12427272	5021913	830.993	230.520 #
13) L3 AR-1232-3	0.000	5.372	0	791895	N.D.	70.638 #
14) L3 AR-1232-4	6.154f	5.457	283305	995639	22.887	90.872 #
15) L3 AR-1232-5	6.154f	5.614	283305	283752	28.488	23.032
16) L4 AR-1242-1	0.000	5.177	0	5021913	N.D.	180.711 #
17) L4 AR-1242-2	0.000	5.177	0	5021913	N.D.	130.017 #
18) L4 AR-1242-3	0.000	5.372	0	791895	N.D.	37.213 #
19) L4 AR-1242-4	6.154f	5.457	283305	995639	12.948	43.680 #
20) L4 AR-1242-5	6.857	5.974	1602399	901310	65.996	32.833 #
21) L5 AR-1248-1	5.853f	5.177	12403269	5021913	549.682	229.863 #
22) L5 AR-1248-2	6.154f	5.407	283305	2186920	8.429	68.407 #
23) L5 AR-1248-3	6.412	5.457	1006070	995639	27.552	29.713
24) L5 AR-1248-4	6.807	5.614	802081	283752	18.746	7.308 #
25) L5 AR-1248-5	6.857	6.030	1602399	1016989	38.576	27.436 #
26) L6 AR-1254-1	6.777	5.974	700717	901310	13.505	14.863
27) L6 AR-1254-2	7.000	6.121	3772884	723410	55.290	13.718 #
28) L6 AR-1254-3	7.364	6.531	4983673	3300554	69.743	39.641 #
29) L6 AR-1254-4	7.650	6.739	8804240	2086384	163.604	42.905 #
30) L6 AR-1254-5	8.067	7.170	2676379	9027034	42.708	120.951 #
31) L7 AR-1260-1	7.524	6.662	7407609	4446390	136.914	79.901 #
32) L7 AR-1260-2	7.785	6.847	5894359	4503103	92.663	67.986 #
33) L7 AR-1260-3	8.143	6.994	41823	1556051	0.777	25.142 #
34) L7 AR-1260-4	8.383	7.502	417093	52549001	6.703	996.435 #
35) L7 AR-1260-5	8.719	7.714	2501952	590726	22.105	4.961 #
36) L8 AR-1262-1	8.383	7.170f	417093	9027034	5.626	116.333 #
37) L8 AR-1262-2	8.719	7.502	2501952	52549001	19.395	743.324 #
38) L8 AR-1262-3	9.059	8.008	4312299	-1905856	45.070	N.D. #
39) L8 AR-1262-4	9.150	8.053	99208	295024	1.299	2.848 #
40) L8 AR-1262-5	9.779f	8.598	2113376	476033	39.515	9.391 #
41) L9 AR-1268-1	9.059	8.008	4312299	-1905856	27.949	N.D. #

Data Path : Z:\pestpcbsrv\HPCHEM1\ECD_P\Data\PP111124\
 Data File : PP068437.D
 Signal(s) : Signal #1: ECD1A.ch Signal #2: ECD2B.ch
 Acq On : 11 Nov 2024 22:12
 Operator : YP\AJ
 Sample : P4792-04
 Misc :
 ALS Vial : 34 Sample Multiplier: 1

Instrument :
 ECD_P
 ClientSampleId :

Integration File signal 1: autoint1.e
 Integration File signal 2: autoint2.e
 Quant Time: Nov 12 02:14:05 2024
 Quant Method : Z:\pestpcbsrv\HPCHEM1\ECD_P\methods\PP110724.M
 Quant Title : GC EXTRACTABLES
 QLast Update : Fri Nov 08 11:04:08 2024
 Response via : Initial Calibration
 Integrator: ChemStation

Volume Inj. : 2 µl
 Signal #1 Phase : ZB-MR1 Signal #2 Phase: ZB-MR2
 Signal #1 Info : 30Mx0.32mmx 0.50µ Signal #2 Info : 30M x 0.32mm x 0.25µm

	Compound	RT#1	RT#2	Resp#1	Resp#2	ng/ml	ng/ml
42)	L9 AR-1268-2	9.150	8.053	99208	295024	0.709	2.084 #
43)	L9 AR-1268-3	0.000	8.311	0	2259071	N.D.	18.143 #
44)	L9 AR-1268-4	9.779f	8.598	2113376	476033	39.549	8.718 #

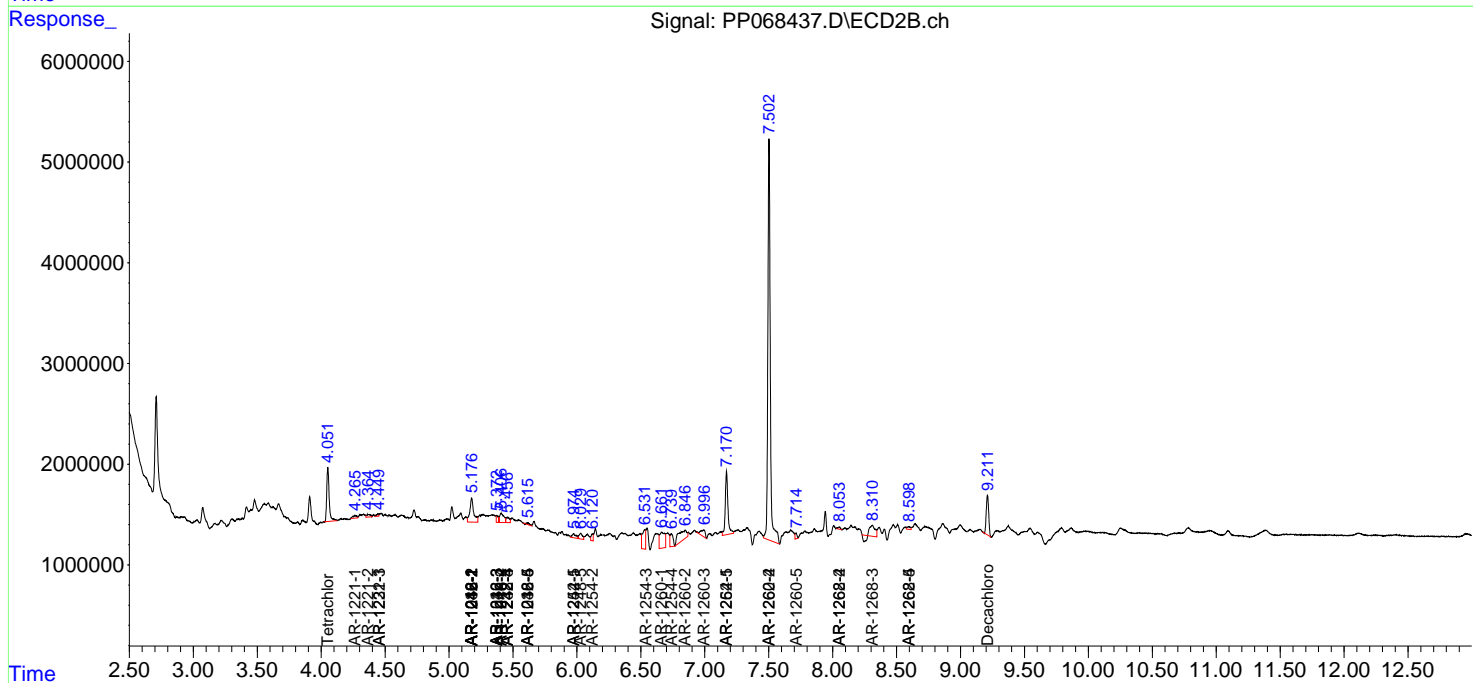
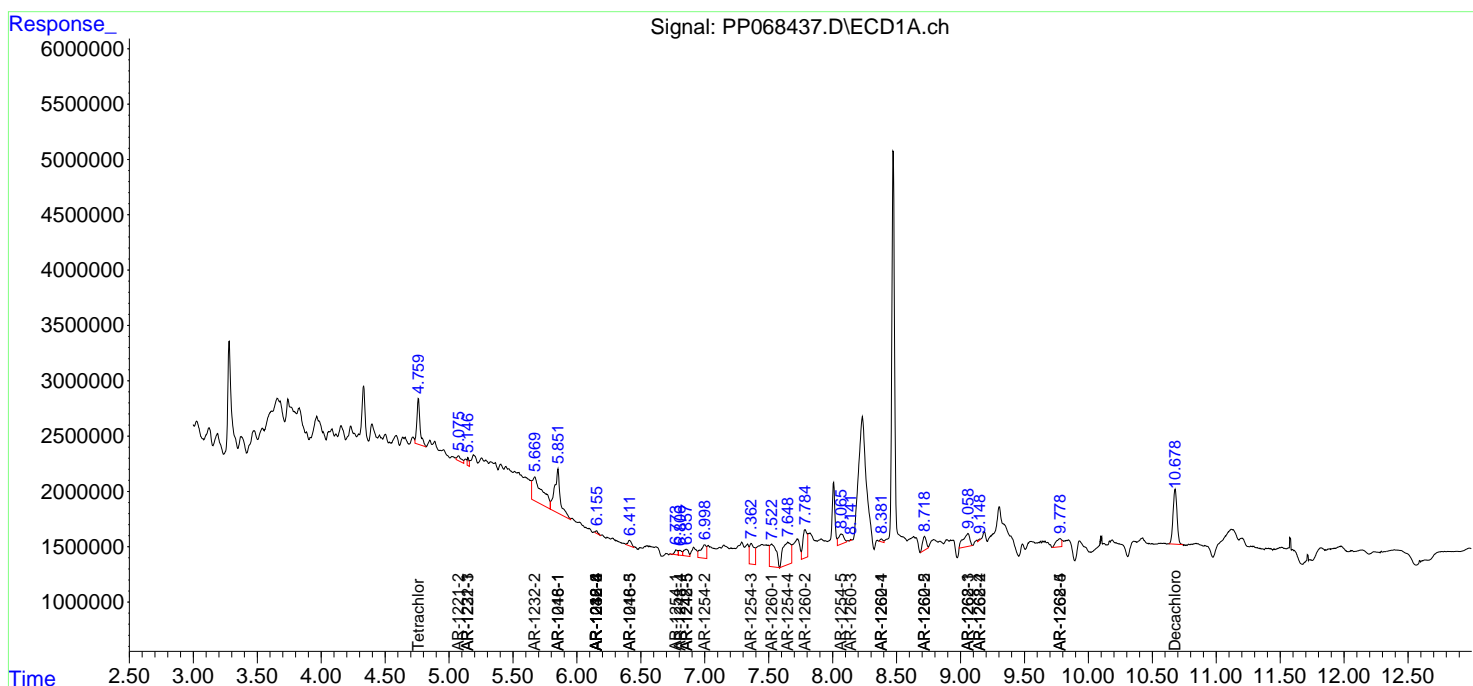
(f)=RT Delta > 1/2 Window (#)=Amounts differ by > 25% (m)=manual int.

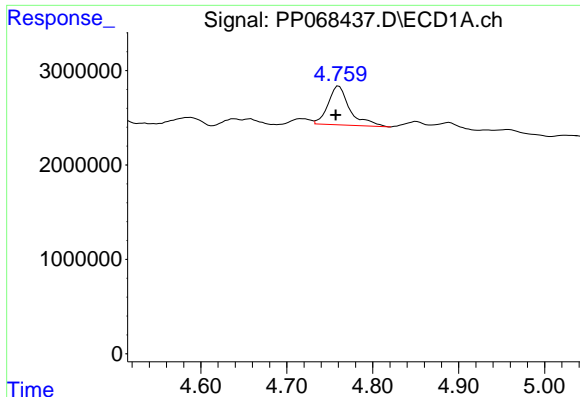
Data Path : Z:\pestpcbsrv\HPCHEM1\ECD_P\Data\PP111124\
 Data File : PP068437.D
 Signal(s) : Signal #1: ECD1A.ch Signal #2: ECD2B.ch
 Acq On : 11 Nov 2024 22:12
 Operator : YP\AJ
 Sample : P4792-04
 Misc :
 ALS Vial : 34 Sample Multiplier: 1

Instrument :
 ECD_P
 ClientSampleId :

Integration File signal 1: autoint1.e
 Integration File signal 2: autoint2.e
 Quant Time: Nov 12 02:14:05 2024
 Quant Method : Z:\pestpcbsrv\HPCHEM1\ECD_P\methods\PP110724.M
 Quant Title : GC EXTRACTABLES
 QLast Update : Fri Nov 08 11:04:08 2024
 Response via : Initial Calibration
 Integrator: ChemStation

Volume Inj. : 2 µl
 Signal #1 Phase : ZB-MR1 Signal #2 Phase: ZB-MR2
 Signal #1 Info : 30Mx0.32mmx 0.50µ Signal #2 Info : 30M x 0.32mm x 0.25µm

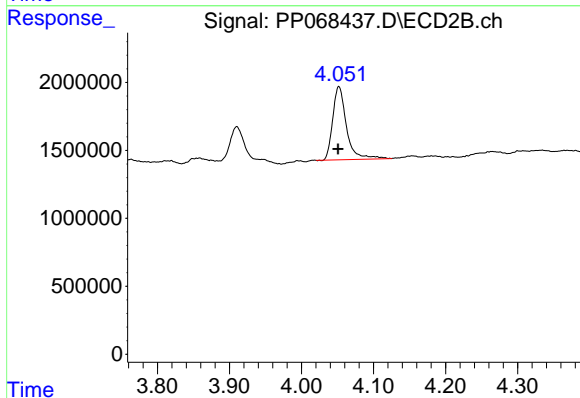




#1 Tetrachloro-m-xylene

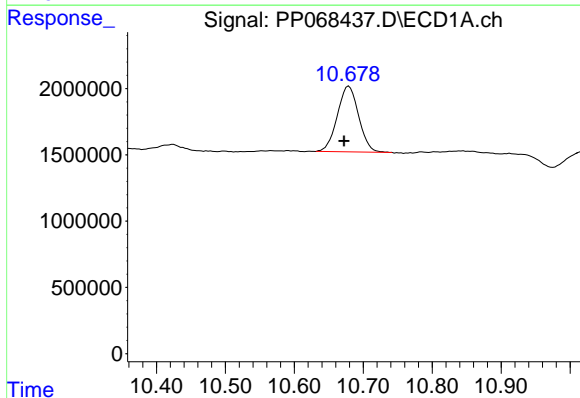
R.T.: 4.761 min
 Delta R.T.: 0.004 min
 Response: 7258173
 Conc: 7.48 ng/ml

Instrument :
 ECD_P
 ClientSampleId :



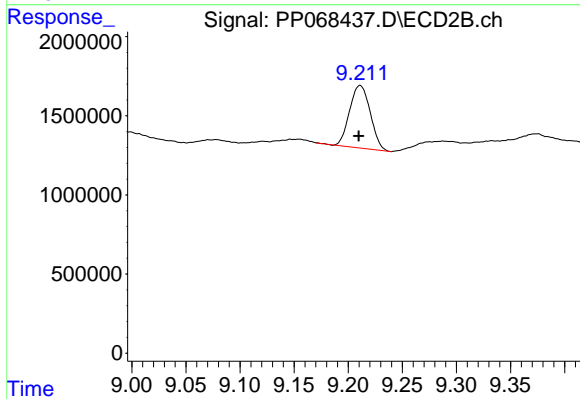
#1 Tetrachloro-m-xylene

R.T.: 4.052 min
 Delta R.T.: 0.001 min
 Response: 7157942
 Conc: 7.39 ng/ml



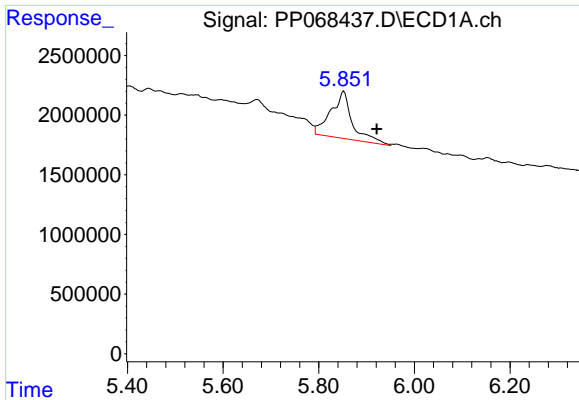
#2 Decachlorobiphenyl

R.T.: 10.679 min
 Delta R.T.: 0.007 min
 Response: 10630319
 Conc: 8.49 ng/ml



#2 Decachlorobiphenyl

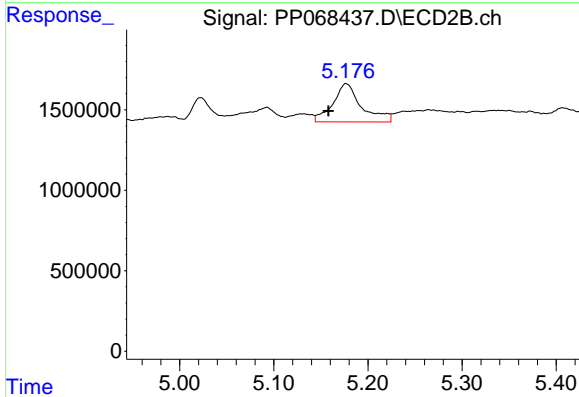
R.T.: 9.211 min
 Delta R.T.: 0.001 min
 Response: 5254550
 Conc: 4.65 ng/ml



#3 AR-1016-1

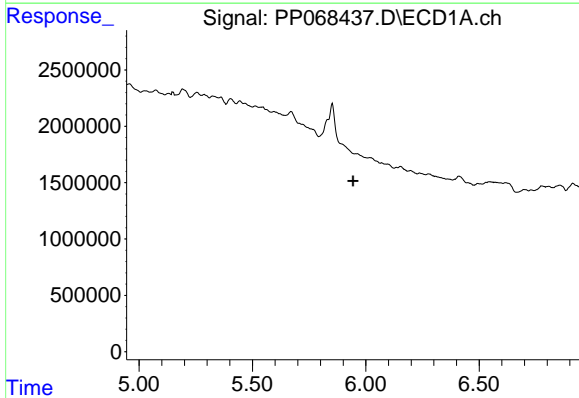
R.T.: 5.853 min
 Delta R.T.: -0.069 min
 Response: 12403269
 Conc: 345.15 ng/ml

Instrument :
 ECD_P
 ClientSampleId :



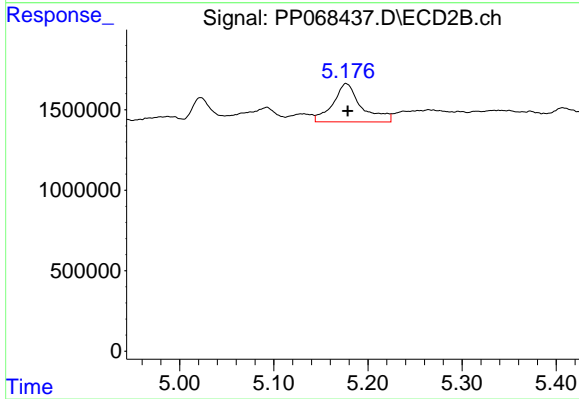
#3 AR-1016-1

R.T.: 5.177 min
 Delta R.T.: 0.019 min
 Response: 5021913
 Conc: 151.96 ng/ml



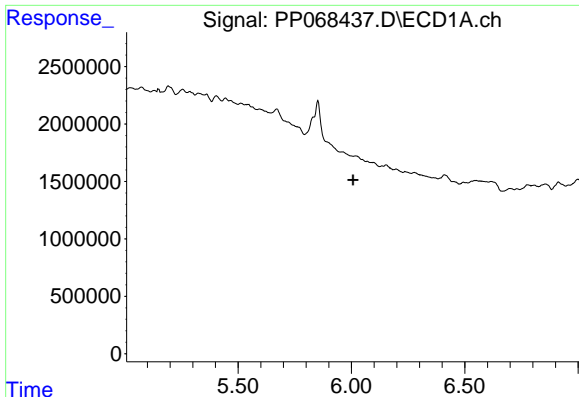
#4 AR-1016-2

R.T.: 0.000 min
 Exp R.T. : 5.944 min
 Response: 0
 Conc: N.D.



#4 AR-1016-2

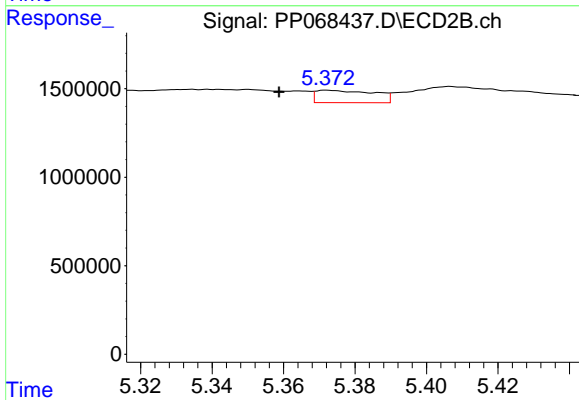
R.T.: 5.177 min
 Delta R.T.: -0.002 min
 Response: 5021913
 Conc: 107.44 ng/ml



#5 AR-1016-3

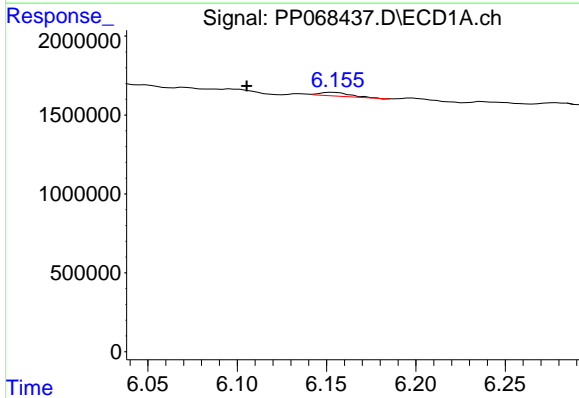
R.T.: 0.000 min
 Exp R.T.: 6.008 min
 Response: 0
 Conc: N.D.

Instrument :
 ECD_P
 ClientSampleId :



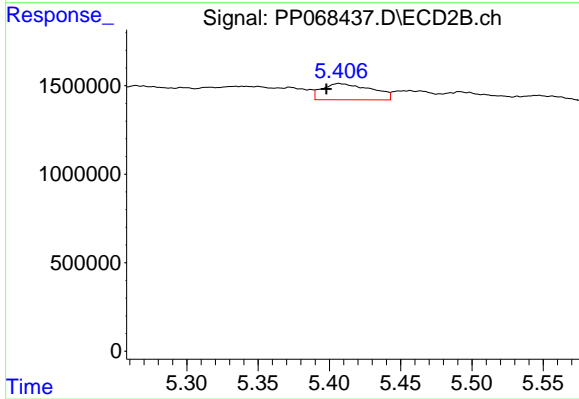
#5 AR-1016-3

R.T.: 5.372 min
 Delta R.T.: 0.014 min
 Response: 791895
 Conc: 29.29 ng/ml



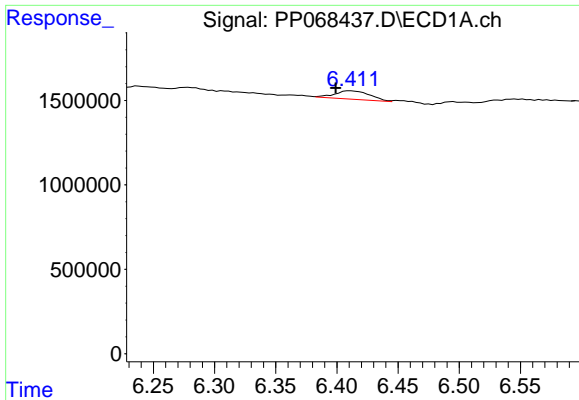
#6 AR-1016-4

R.T.: 6.154 min
 Delta R.T.: 0.048 min
 Response: 283305
 Conc: 10.78 ng/ml



#6 AR-1016-4

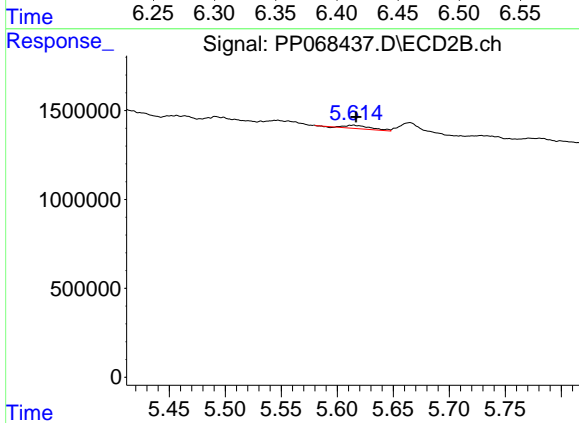
R.T.: 5.407 min
 Delta R.T.: 0.009 min
 Response: 2186920
 Conc: 92.69 ng/ml



#7 AR-1016-5

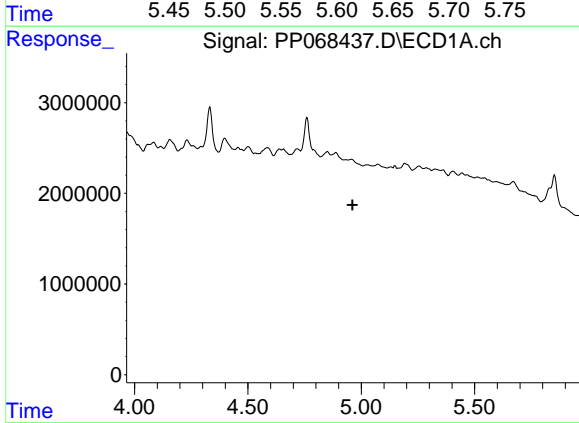
R.T.: 6.412 min
 Delta R.T.: 0.013 min
 Response: 1006070
 Conc: 35.67 ng/ml

Instrument :
 ECD_P
 ClientSampleId :



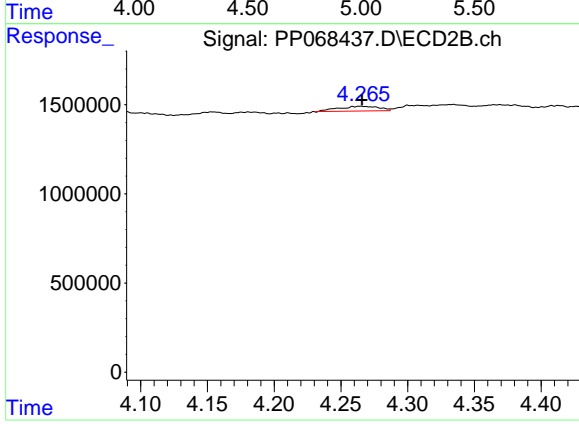
#7 AR-1016-5

R.T.: 5.614 min
 Delta R.T.: -0.003 min
 Response: 283752
 Conc: 9.57 ng/ml



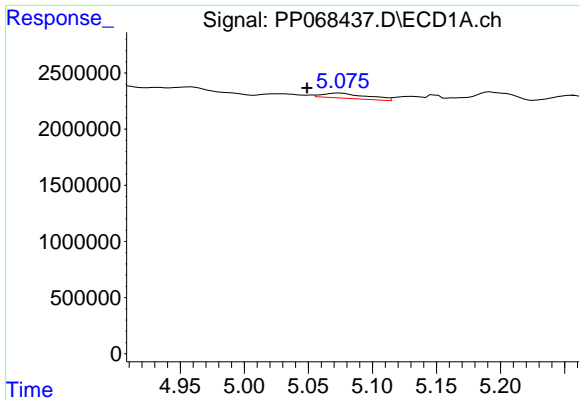
#8 AR-1221-1

R.T.: 0.000 min
 Exp R.T. : 4.962 min
 Response: 0
 Conc: N.D.



#8 AR-1221-1

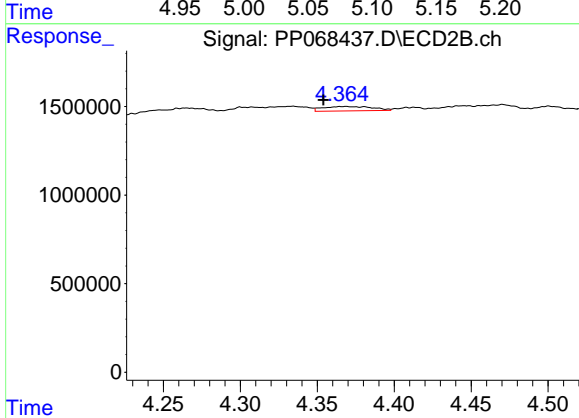
R.T.: 4.265 min
 Delta R.T.: -0.001 min
 Response: 564578
 Conc: 44.77 ng/ml



#9 AR-1221-2

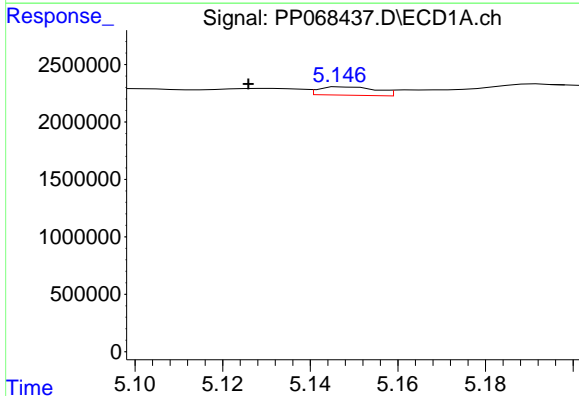
R.T.: 5.074 min
 Delta R.T.: 0.025 min
 Response: 1095455
 Conc: 108.62 ng/ml

Instrument :
 ECD_P
 ClientSampleId :



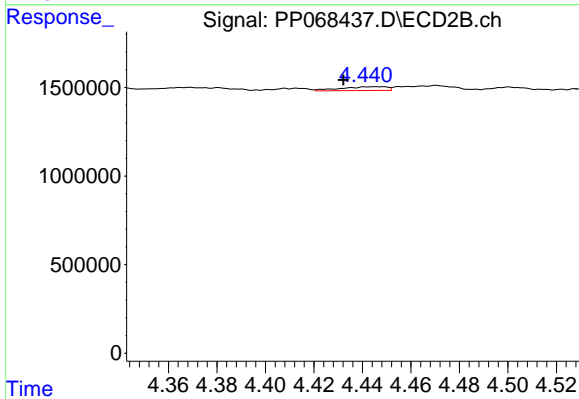
#9 AR-1221-2

R.T.: 4.369 min
 Delta R.T.: 0.015 min
 Response: 551867
 Conc: 56.47 ng/ml



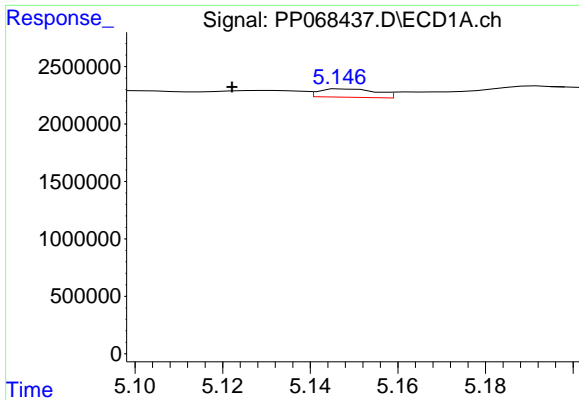
#10 AR-1221-3

R.T.: 5.148 min
 Delta R.T.: 0.022 min
 Response: 670359
 Conc: 22.15 ng/ml



#10 AR-1221-3

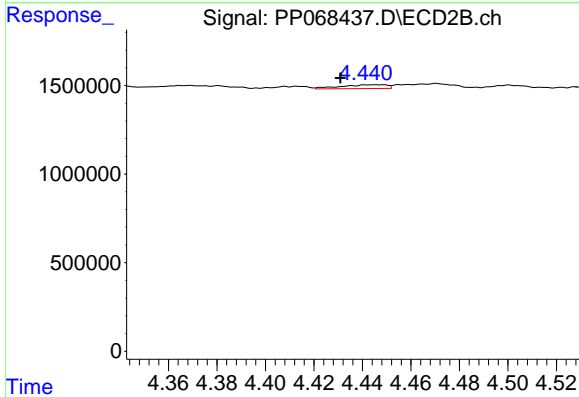
R.T.: 4.447 min
 Delta R.T.: 0.015 min
 Response: 285128
 Conc: 9.35 ng/ml



#11 AR-1232-1

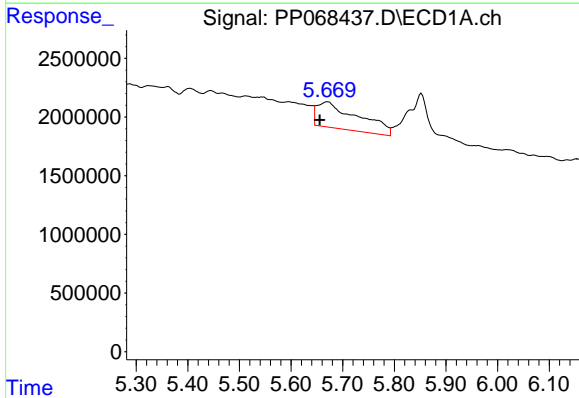
R.T.: 5.148 min
 Delta R.T.: 0.026 min
 Response: 670359
 Conc: 28.75 ng/ml

Instrument :
 ECD_P
 ClientSampleId :



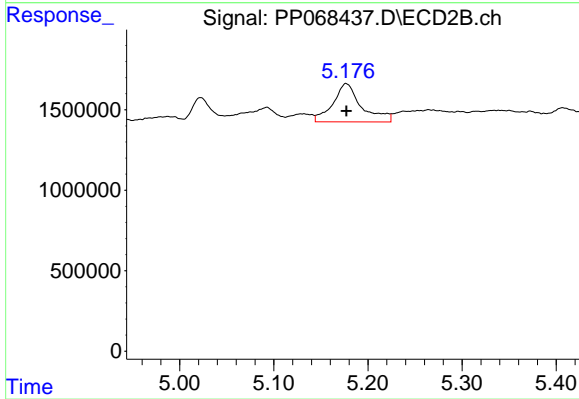
#11 AR-1232-1

R.T.: 4.447 min
 Delta R.T.: 0.016 min
 Response: 285128
 Conc: 12.08 ng/ml



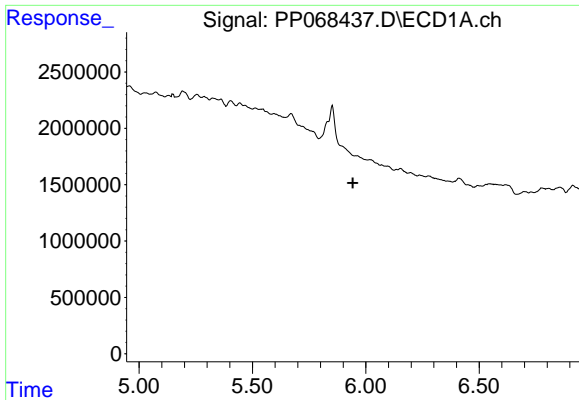
#12 AR-1232-2

R.T.: 5.671 min
 Delta R.T.: 0.015 min
 Response: 12427272
 Conc: 830.99 ng/ml



#12 AR-1232-2

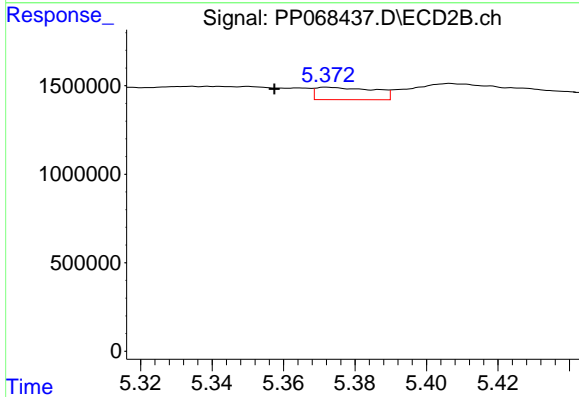
R.T.: 5.177 min
 Delta R.T.: 0.000 min
 Response: 5021913
 Conc: 230.52 ng/ml



#13 AR-1232-3

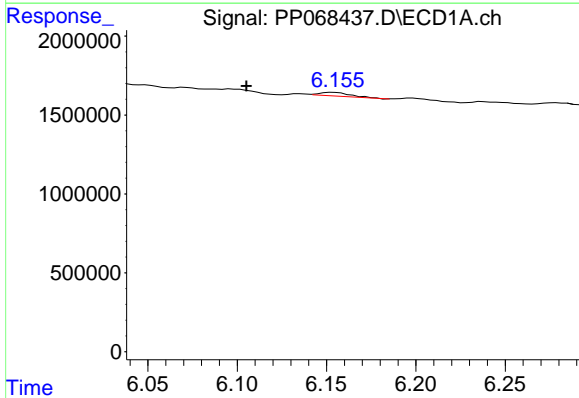
R.T.: 0.000 min
 Exp R.T.: 5.943 min
 Response: 0
 Conc: N.D.

Instrument :
 ECD_P
 ClientSampleId :



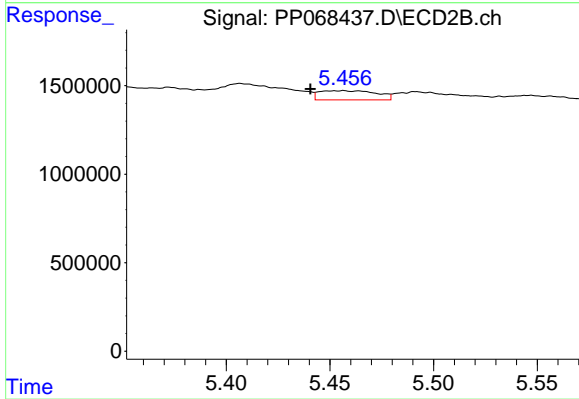
#13 AR-1232-3

R.T.: 5.372 min
 Delta R.T.: 0.015 min
 Response: 791895
 Conc: 70.64 ng/ml



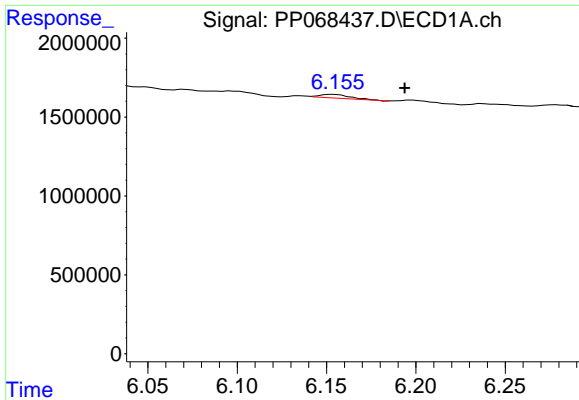
#14 AR-1232-4

R.T.: 6.154 min
 Delta R.T.: 0.048 min
 Response: 283305
 Conc: 22.89 ng/ml



#14 AR-1232-4

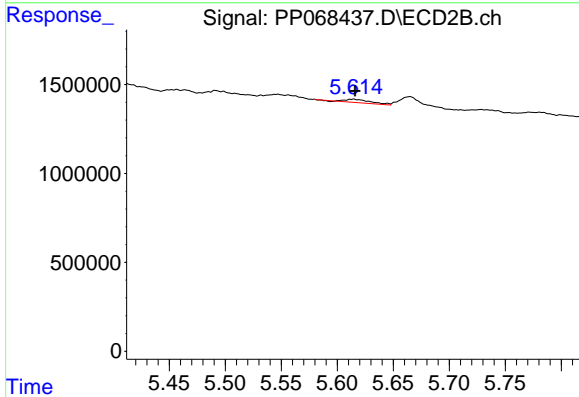
R.T.: 5.457 min
 Delta R.T.: 0.016 min
 Response: 995639
 Conc: 90.87 ng/ml



#15 AR-1232-5

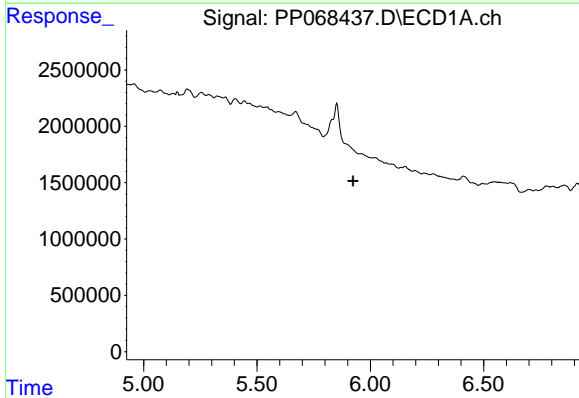
R.T.: 6.154 min
 Delta R.T.: -0.040 min
 Response: 283305
 Conc: 28.49 ng/ml

Instrument :
 ECD_P
 ClientSampleId :



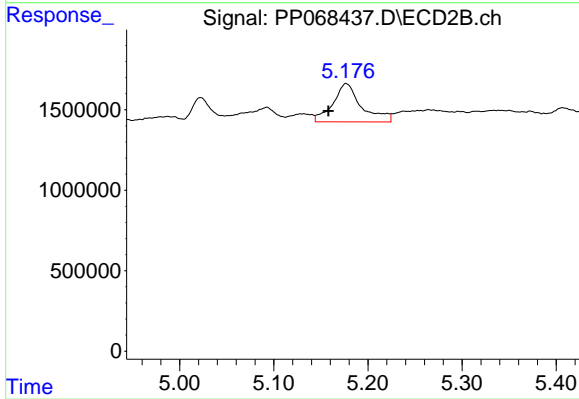
#15 AR-1232-5

R.T.: 5.614 min
 Delta R.T.: -0.002 min
 Response: 283752
 Conc: 23.03 ng/ml



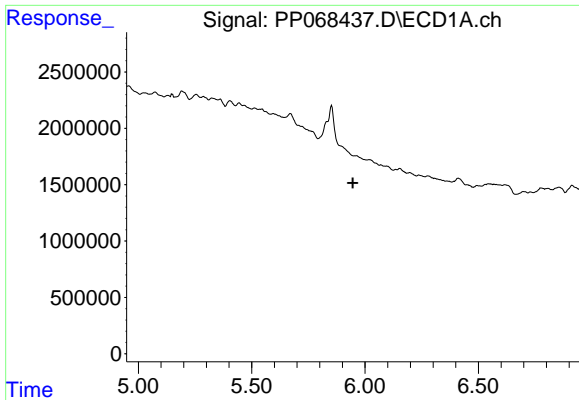
#16 AR-1242-1

R.T.: 0.000 min
 Exp R.T. : 5.925 min
 Response: 0
 Conc: N.D.



#16 AR-1242-1

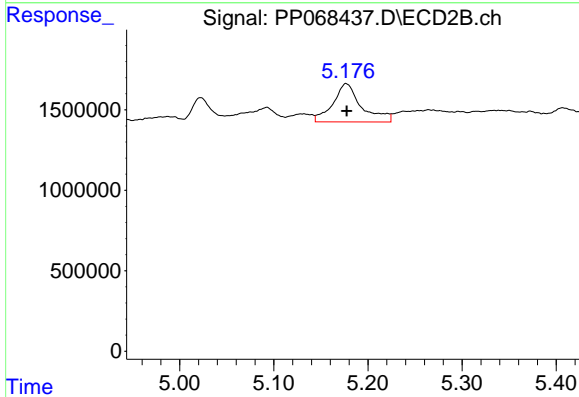
R.T.: 5.177 min
 Delta R.T.: 0.019 min
 Response: 5021913
 Conc: 180.71 ng/ml



#17 AR-1242-2

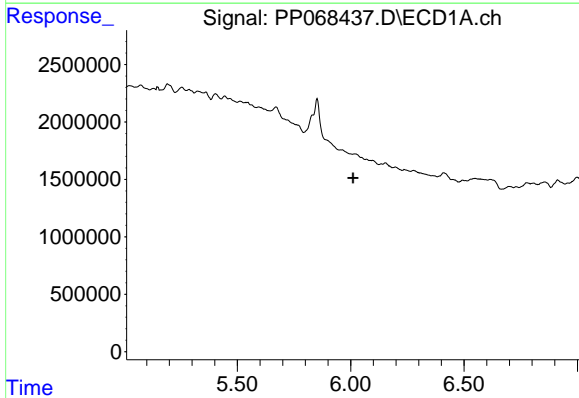
R.T.: 0.000 min
 Exp R.T. : 5.947 min
 Response: 0
 Conc: N.D.

Instrument :
 ECD_P
 ClientSampleId :



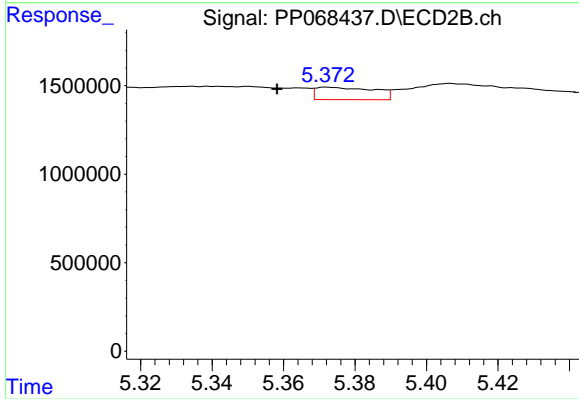
#17 AR-1242-2

R.T.: 5.177 min
 Delta R.T.: 0.000 min
 Response: 5021913
 Conc: 130.02 ng/ml



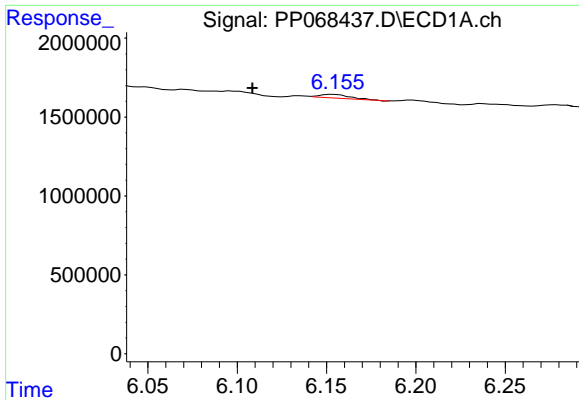
#18 AR-1242-3

R.T.: 0.000 min
 Exp R.T. : 6.010 min
 Response: 0
 Conc: N.D.



#18 AR-1242-3

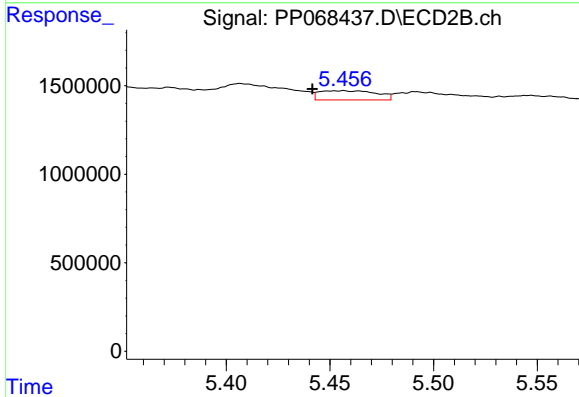
R.T.: 5.372 min
 Delta R.T.: 0.014 min
 Response: 791895
 Conc: 37.21 ng/ml



#19 AR-1242-4

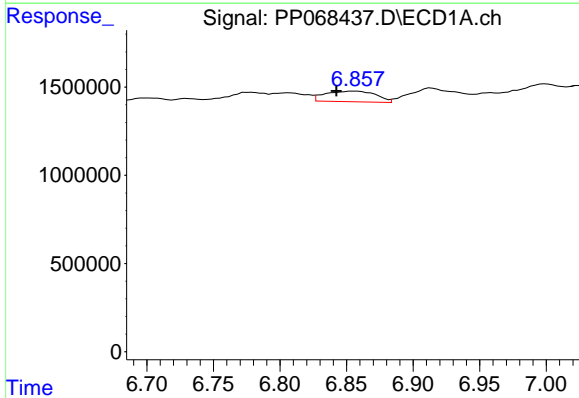
R.T.: 6.154 min
 Delta R.T.: 0.045 min
 Response: 283305
 Conc: 12.95 ng/ml

Instrument :
 ECD_P
 ClientSampleId :



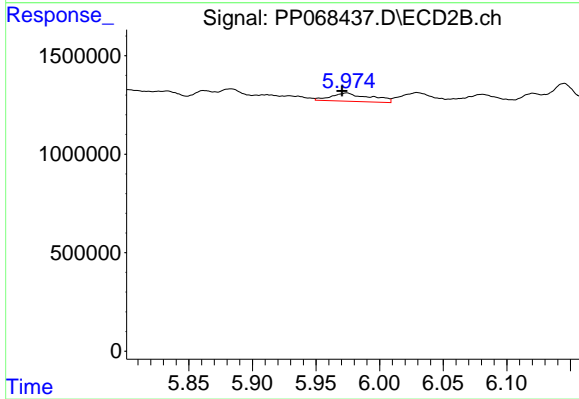
#19 AR-1242-4

R.T.: 5.457 min
 Delta R.T.: 0.015 min
 Response: 995639
 Conc: 43.68 ng/ml



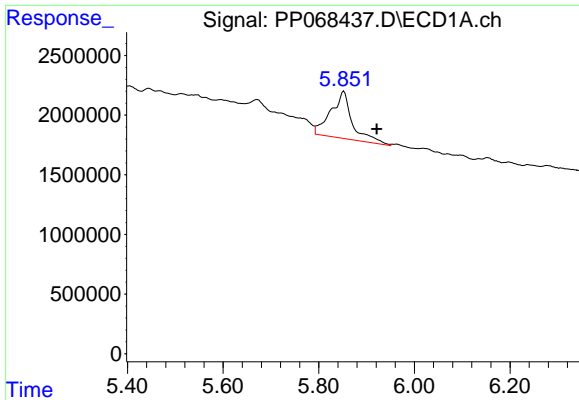
#20 AR-1242-5

R.T.: 6.857 min
 Delta R.T.: 0.015 min
 Response: 1602399
 Conc: 66.00 ng/ml



#20 AR-1242-5

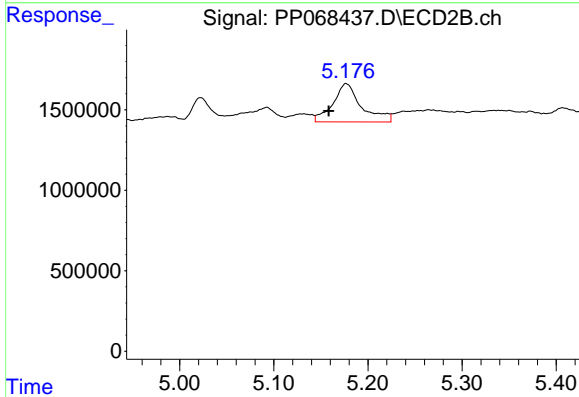
R.T.: 5.974 min
 Delta R.T.: 0.004 min
 Response: 901310
 Conc: 32.83 ng/ml



#21 AR-1248-1

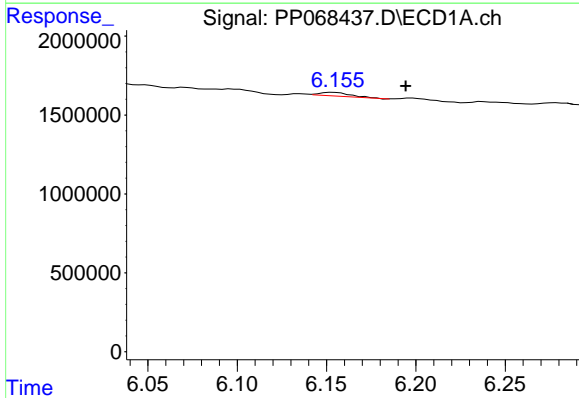
R.T.: 5.853 min
 Delta R.T.: -0.069 min
 Response: 12403269
 Conc: 549.68 ng/ml

Instrument :
 ECD_P
 ClientSampleId :



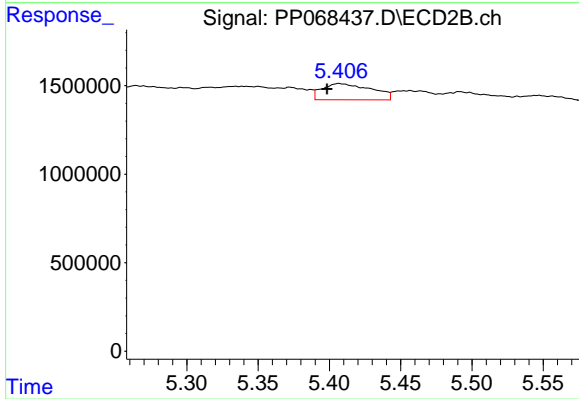
#21 AR-1248-1

R.T.: 5.177 min
 Delta R.T.: 0.019 min
 Response: 5021913
 Conc: 229.86 ng/ml



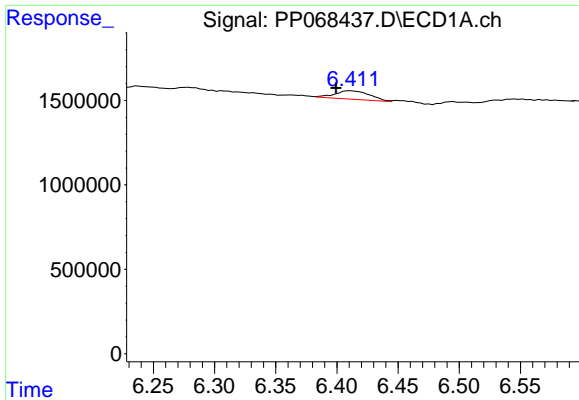
#22 AR-1248-2

R.T.: 6.154 min
 Delta R.T.: -0.041 min
 Response: 283305
 Conc: 8.43 ng/ml



#22 AR-1248-2

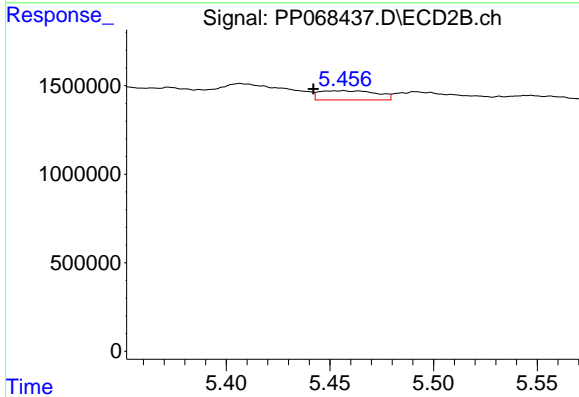
R.T.: 5.407 min
 Delta R.T.: 0.008 min
 Response: 2186920
 Conc: 68.41 ng/ml



#23 AR-1248-3

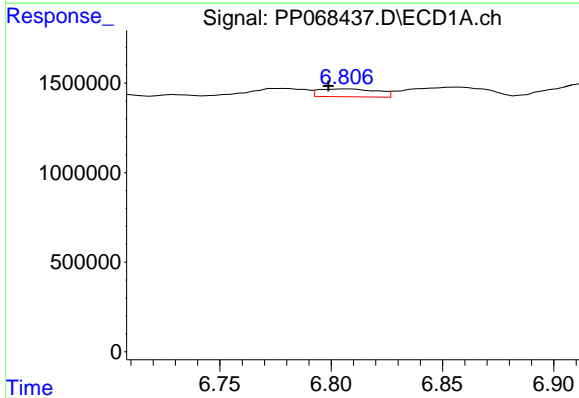
R.T.: 6.412 min
 Delta R.T.: 0.012 min
 Response: 1006070
 Conc: 27.55 ng/ml

Instrument :
 ECD_P
 ClientSampleId :



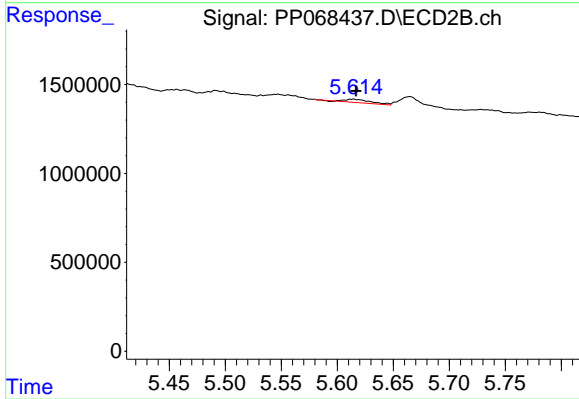
#23 AR-1248-3

R.T.: 5.457 min
 Delta R.T.: 0.014 min
 Response: 995639
 Conc: 29.71 ng/ml



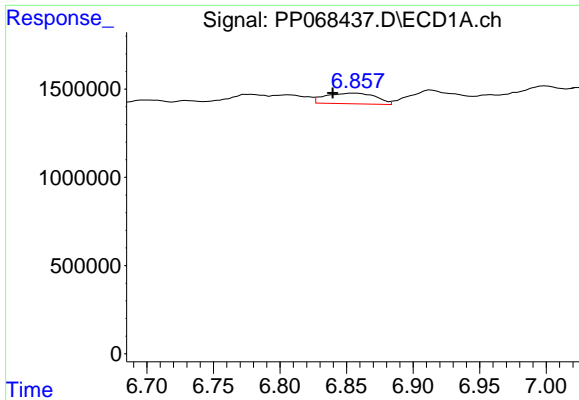
#24 AR-1248-4

R.T.: 6.807 min
 Delta R.T.: 0.008 min
 Response: 802081
 Conc: 18.75 ng/ml



#24 AR-1248-4

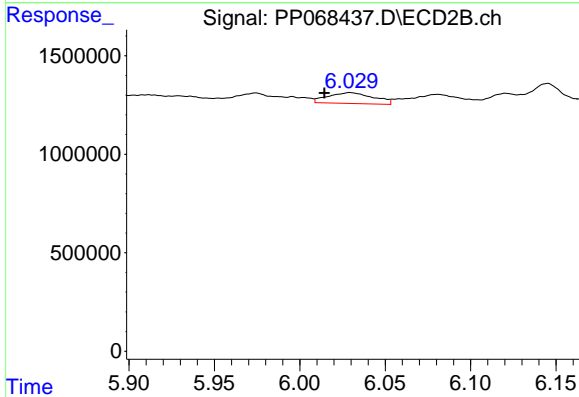
R.T.: 5.614 min
 Delta R.T.: -0.003 min
 Response: 283752
 Conc: 7.31 ng/ml



#25 AR-1248-5

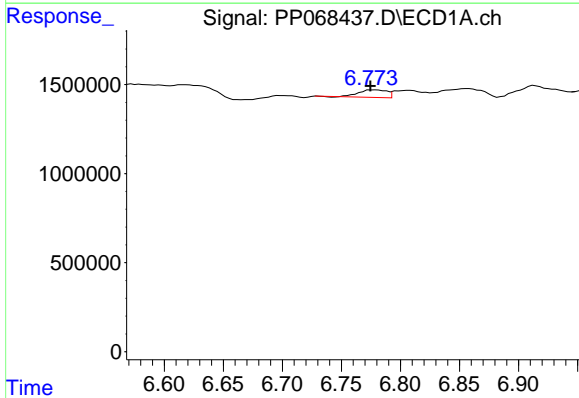
R.T.: 6.857 min
 Delta R.T.: 0.018 min
 Response: 1602399
 Conc: 38.58 ng/ml

Instrument :
 ECD_P
 ClientSampleId :



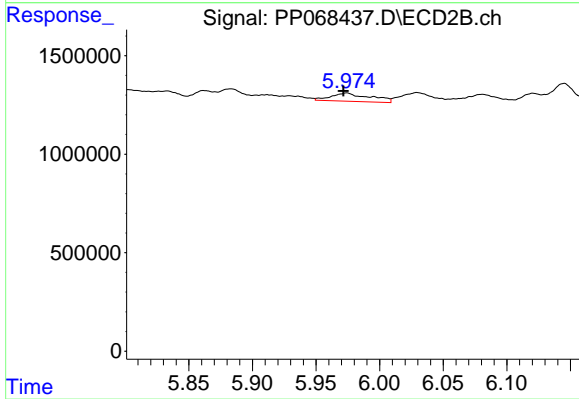
#25 AR-1248-5

R.T.: 6.030 min
 Delta R.T.: 0.015 min
 Response: 1016989
 Conc: 27.44 ng/ml



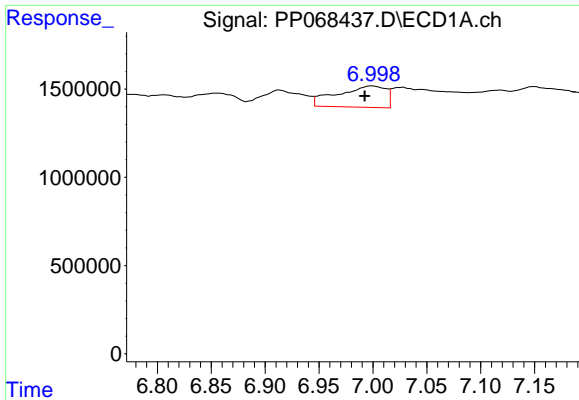
#26 AR-1254-1

R.T.: 6.777 min
 Delta R.T.: 0.002 min
 Response: 700717
 Conc: 13.50 ng/ml



#26 AR-1254-1

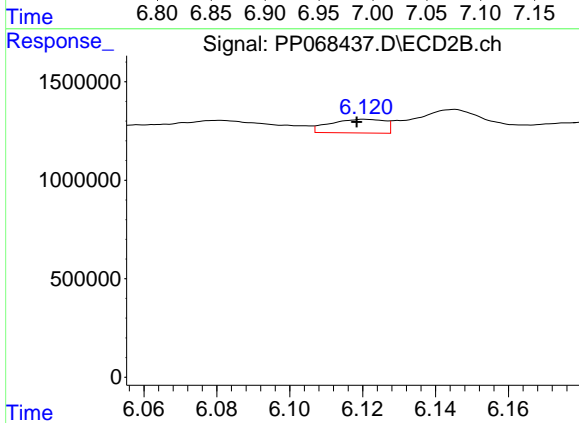
R.T.: 5.974 min
 Delta R.T.: 0.003 min
 Response: 901310
 Conc: 14.86 ng/ml



#27 AR-1254-2

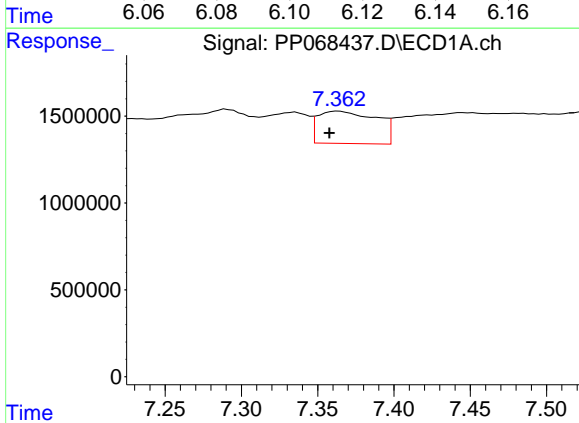
R.T.: 7.000 min
 Delta R.T.: 0.007 min
 Response: 3772884
 Conc: 55.29 ng/ml

Instrument :
 ECD_P
 ClientSampleId :



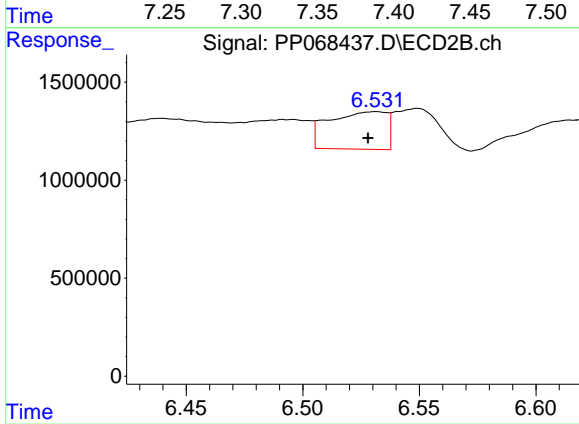
#27 AR-1254-2

R.T.: 6.121 min
 Delta R.T.: 0.002 min
 Response: 723410
 Conc: 13.72 ng/ml



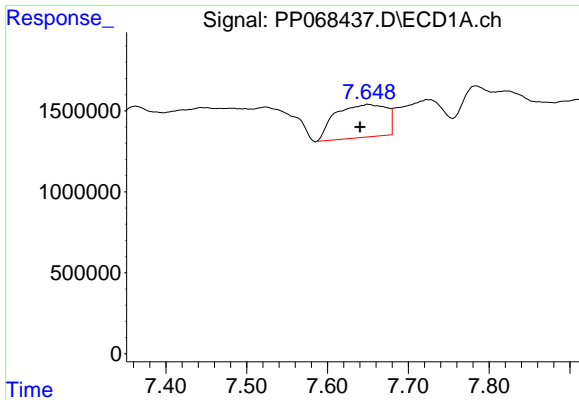
#28 AR-1254-3

R.T.: 7.364 min
 Delta R.T.: 0.006 min
 Response: 4983673
 Conc: 69.74 ng/ml



#28 AR-1254-3

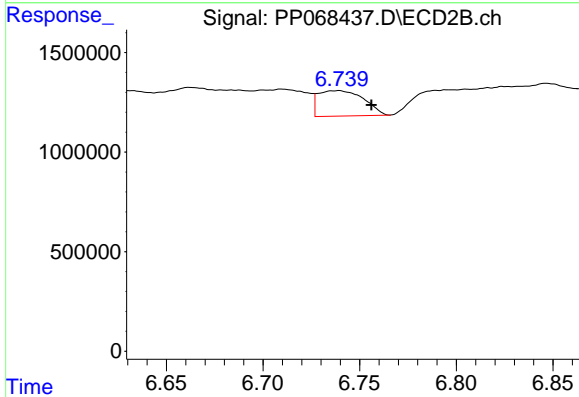
R.T.: 6.531 min
 Delta R.T.: 0.003 min
 Response: 3300554
 Conc: 39.64 ng/ml



#29 AR-1254-4

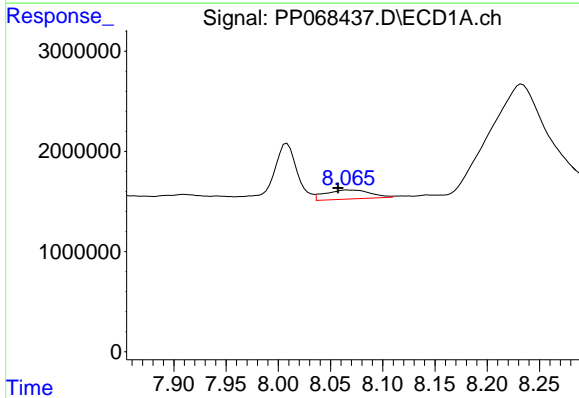
R.T.: 7.650 min
 Delta R.T.: 0.010 min
 Response: 8804240
 Conc: 163.60 ng/ml

Instrument :
 ECD_P
 ClientSampleId :



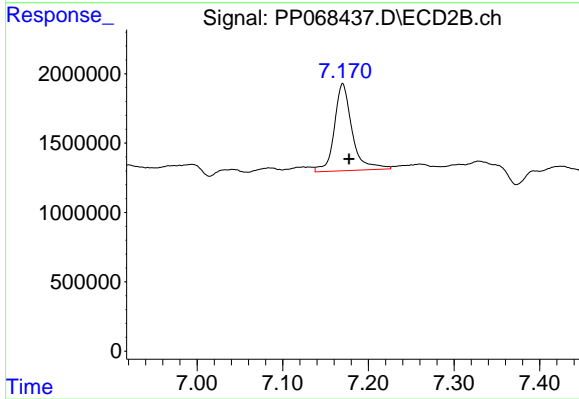
#29 AR-1254-4

R.T.: 6.739 min
 Delta R.T.: -0.017 min
 Response: 2086384
 Conc: 42.91 ng/ml



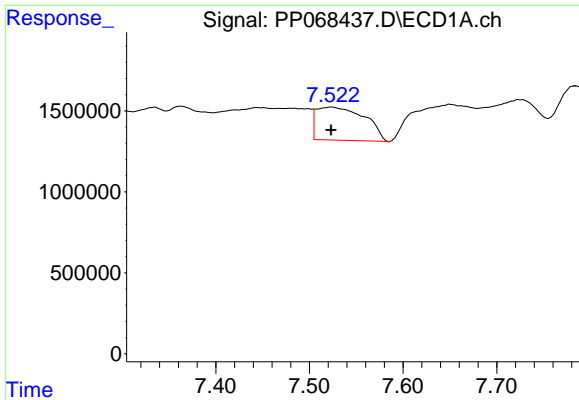
#30 AR-1254-5

R.T.: 8.067 min
 Delta R.T.: 0.009 min
 Response: 2676379
 Conc: 42.71 ng/ml



#30 AR-1254-5

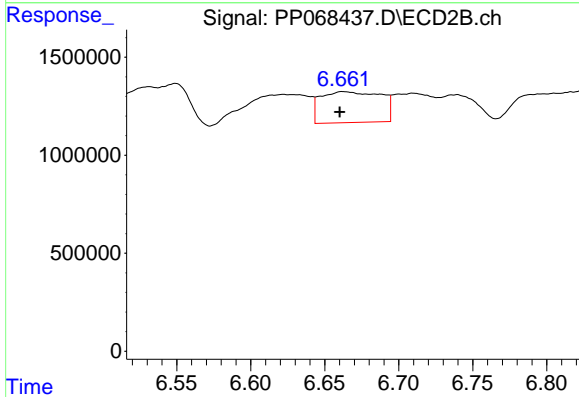
R.T.: 7.170 min
 Delta R.T.: -0.007 min
 Response: 9027034
 Conc: 120.95 ng/ml



#31 AR-1260-1

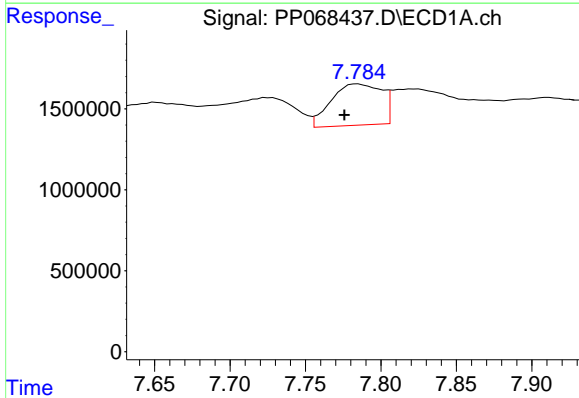
R.T.: 7.524 min
 Delta R.T.: 0.001 min
 Response: 7407609
 Conc: 136.91 ng/ml

Instrument :
 ECD_P
 ClientSampleId :



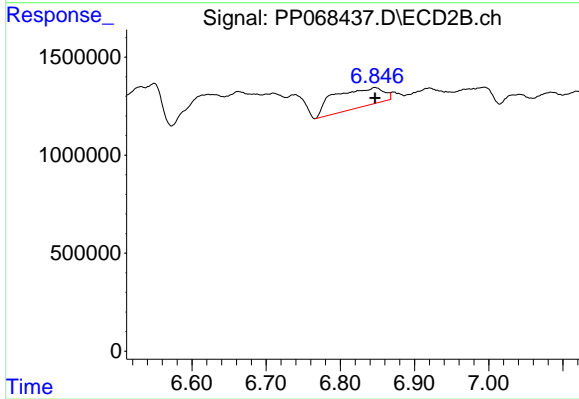
#31 AR-1260-1

R.T.: 6.662 min
 Delta R.T.: 0.002 min
 Response: 4446390
 Conc: 79.90 ng/ml



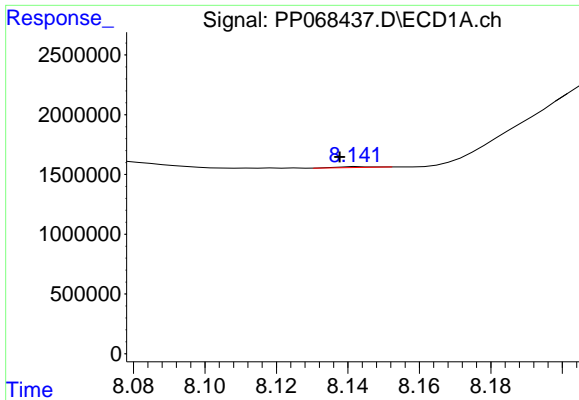
#32 AR-1260-2

R.T.: 7.785 min
 Delta R.T.: 0.009 min
 Response: 5894359
 Conc: 92.66 ng/ml



#32 AR-1260-2

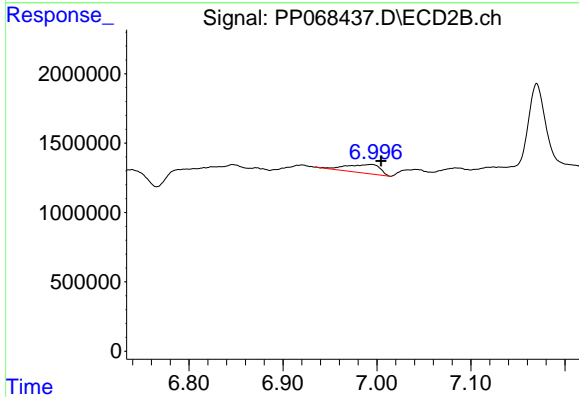
R.T.: 6.847 min
 Delta R.T.: 0.000 min
 Response: 4503103
 Conc: 67.99 ng/ml



#33 AR-1260-3

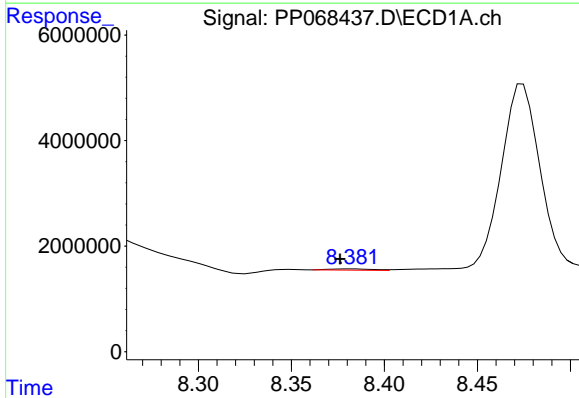
R.T.: 8.143 min
 Delta R.T.: 0.005 min
 Response: 41823
 Conc: 0.78 ng/ml

Instrument :
 ECD_P
 ClientSampleId :



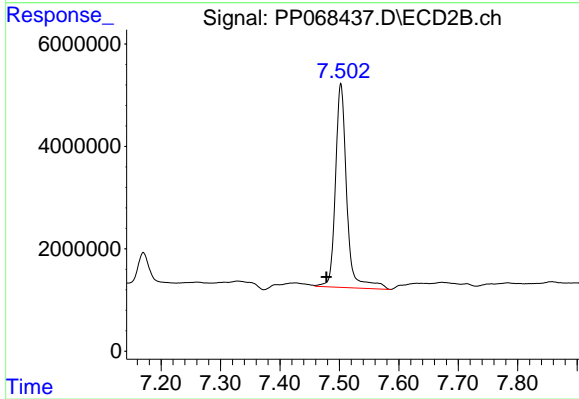
#33 AR-1260-3

R.T.: 6.994 min
 Delta R.T.: -0.011 min
 Response: 1556051
 Conc: 25.14 ng/ml



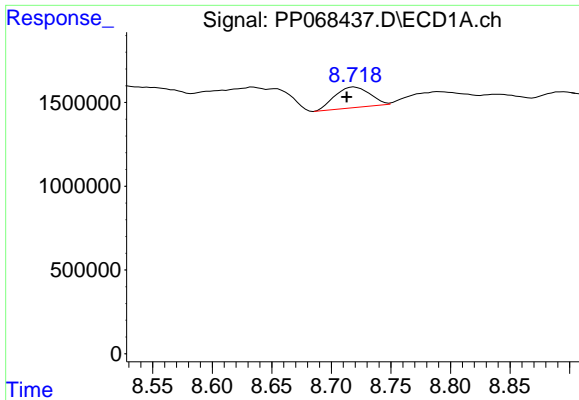
#34 AR-1260-4

R.T.: 8.383 min
 Delta R.T.: 0.006 min
 Response: 417093
 Conc: 6.70 ng/ml



#34 AR-1260-4

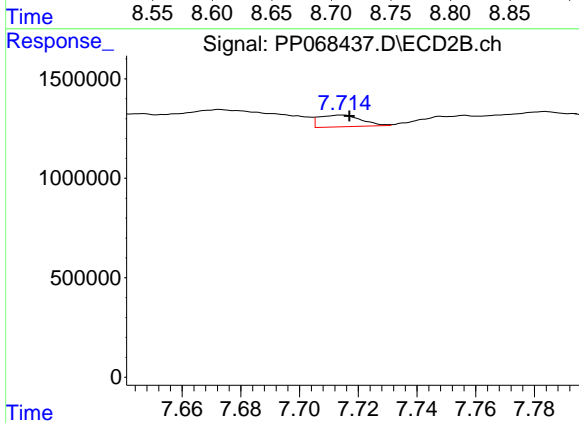
R.T.: 7.502 min
 Delta R.T.: 0.024 min
 Response: 52549001
 Conc: 996.44 ng/ml



#35 AR-1260-5

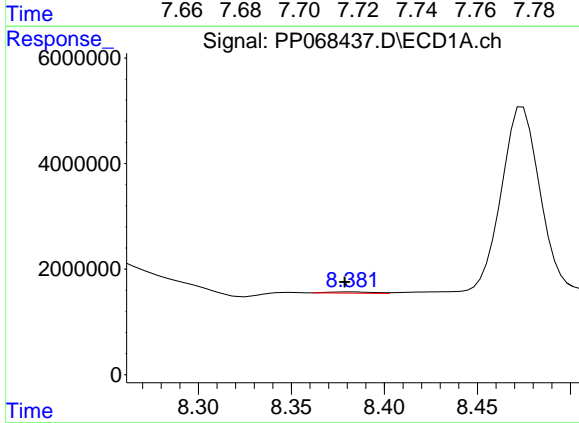
R.T.: 8.719 min
 Delta R.T.: 0.006 min
 Response: 2501952
 Conc: 22.11 ng/ml

Instrument :
 ECD_P
 ClientSampleId :



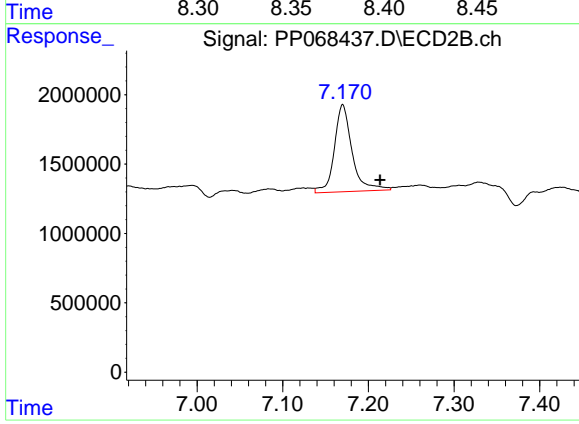
#35 AR-1260-5

R.T.: 7.714 min
 Delta R.T.: -0.003 min
 Response: 590726
 Conc: 4.96 ng/ml



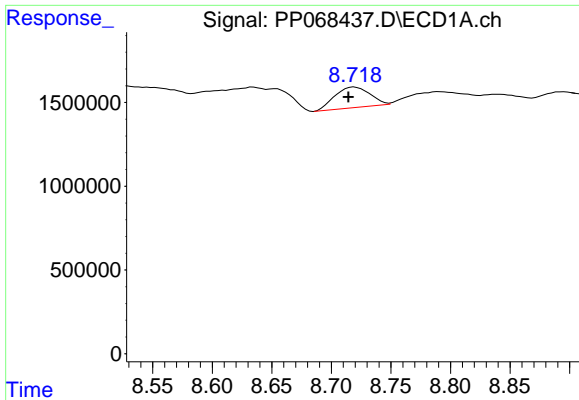
#36 AR-1262-1

R.T.: 8.383 min
 Delta R.T.: 0.004 min
 Response: 417093
 Conc: 5.63 ng/ml



#36 AR-1262-1

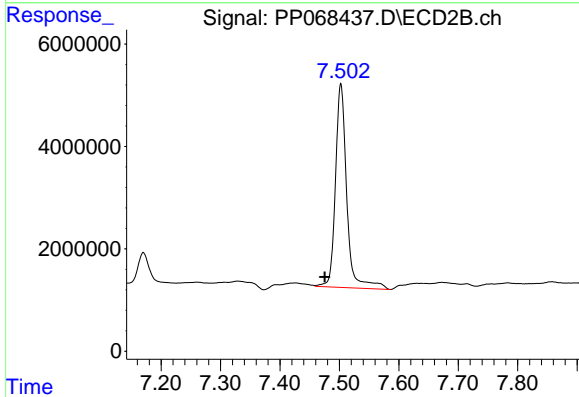
R.T.: 7.170 min
 Delta R.T.: -0.044 min
 Response: 9027034
 Conc: 116.33 ng/ml



#37 AR-1262-2

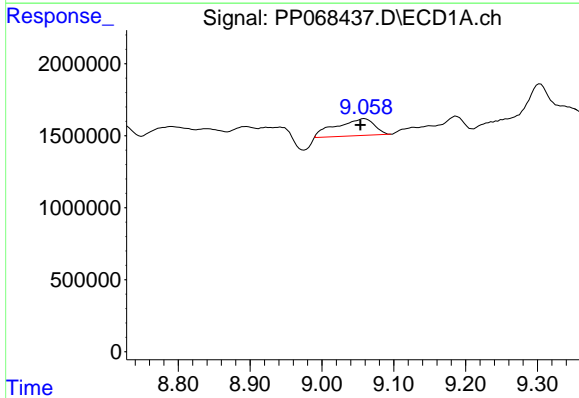
R.T.: 8.719 min
 Delta R.T.: 0.005 min
 Response: 2501952
 Conc: 19.40 ng/ml

Instrument :
 ECD_P
 ClientSampleId :



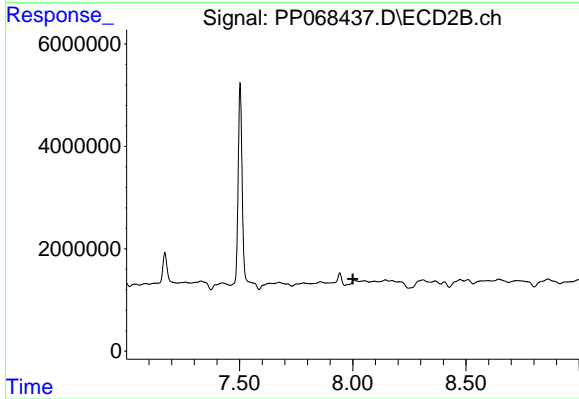
#37 AR-1262-2

R.T.: 7.502 min
 Delta R.T.: 0.027 min
 Response: 52549001
 Conc: 743.32 ng/ml



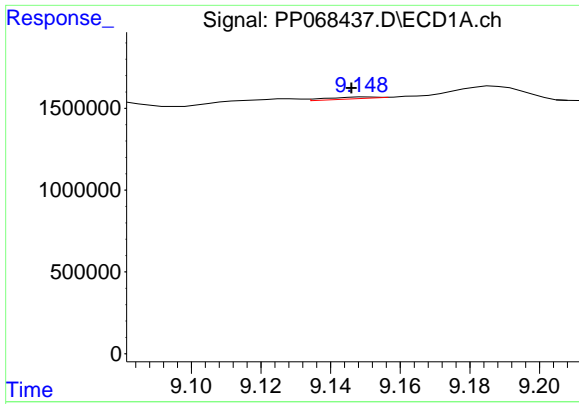
#38 AR-1262-3

R.T.: 9.059 min
 Delta R.T.: 0.006 min
 Response: 4312299
 Conc: 45.07 ng/ml



#38 AR-1262-3

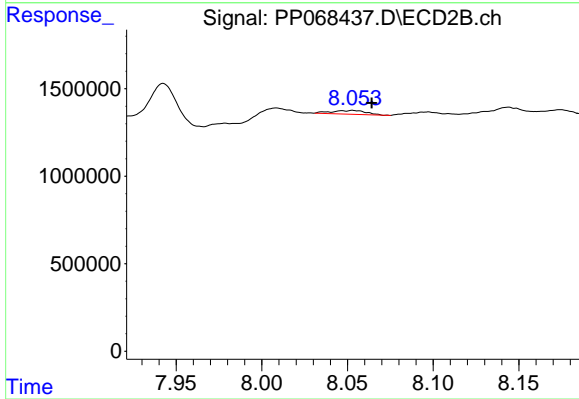
R.T.: 8.008 min
 Delta R.T.: 0.008 min
 Response: -1905856
 Conc: N.D.



#39 AR-1262-4

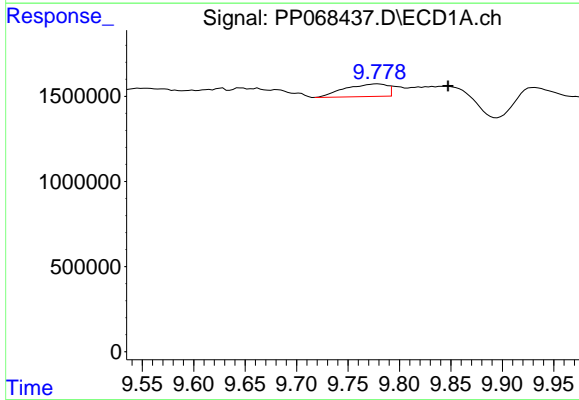
R.T.: 9.150 min
 Delta R.T.: 0.004 min
 Response: 99208
 Conc: 1.30 ng/ml

Instrument :
 ECD_P
 ClientSampleId :



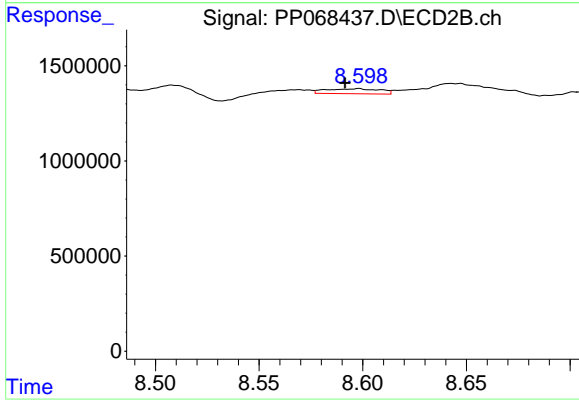
#39 AR-1262-4

R.T.: 8.053 min
 Delta R.T.: -0.011 min
 Response: 295024
 Conc: 2.85 ng/ml



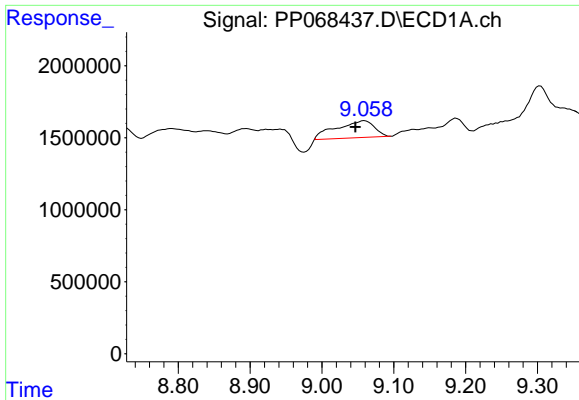
#40 AR-1262-5

R.T.: 9.779 min
 Delta R.T.: -0.068 min
 Response: 2113376
 Conc: 39.52 ng/ml



#40 AR-1262-5

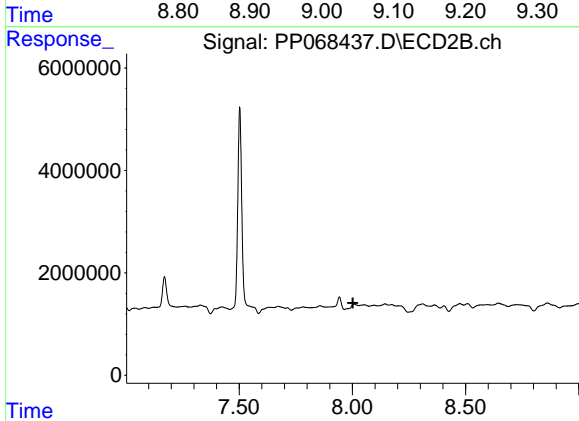
R.T.: 8.598 min
 Delta R.T.: 0.007 min
 Response: 476033
 Conc: 9.39 ng/ml



#41 AR-1268-1

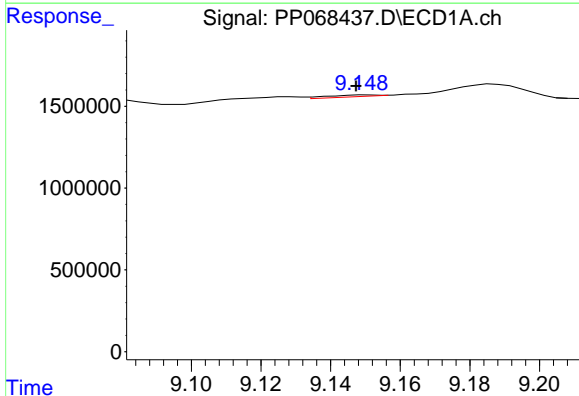
R.T.: 9.059 min
 Delta R.T.: 0.012 min
 Response: 4312299
 Conc: 27.95 ng/ml

Instrument :
 ECD_P
 ClientSampleId :



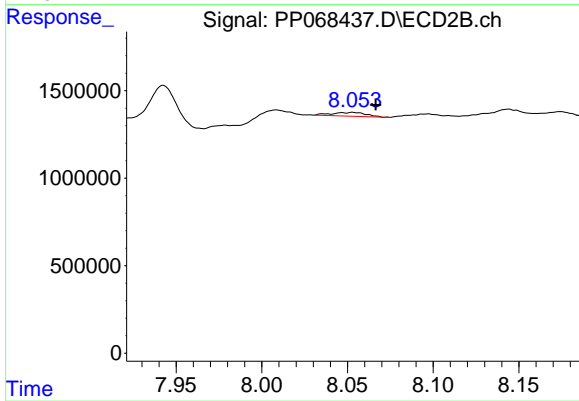
#41 AR-1268-1

R.T.: 8.008 min
 Delta R.T.: 0.006 min
 Response: -1905856
 Conc: N.D.



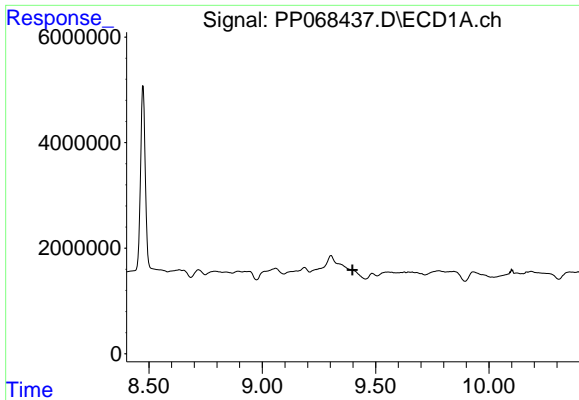
#42 AR-1268-2

R.T.: 9.150 min
 Delta R.T.: 0.003 min
 Response: 99208
 Conc: 0.71 ng/ml



#42 AR-1268-2

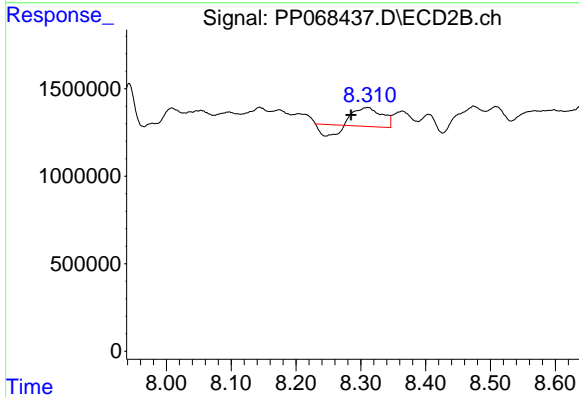
R.T.: 8.053 min
 Delta R.T.: -0.013 min
 Response: 295024
 Conc: 2.08 ng/ml



#43 AR-1268-3

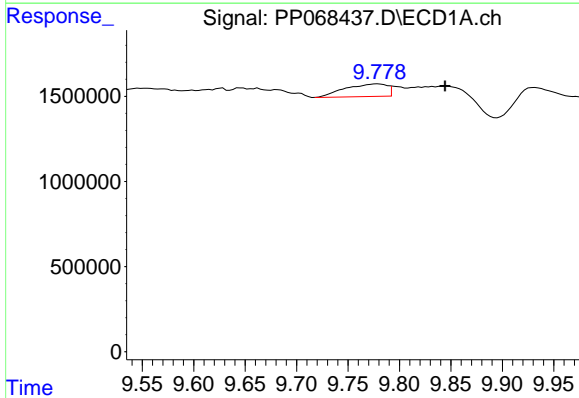
R.T.: 0.000 min
 Exp R.T.: 9.398 min
 Response: 0
 Conc: N.D.

Instrument :
 ECD_P
 ClientSampleId :



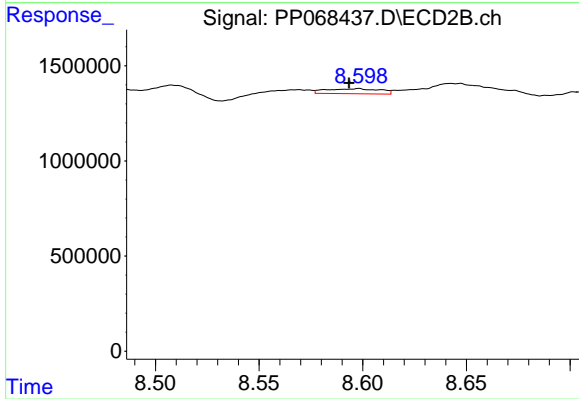
#43 AR-1268-3

R.T.: 8.311 min
 Delta R.T.: 0.026 min
 Response: 2259071
 Conc: 18.14 ng/ml



#44 AR-1268-4

R.T.: 9.779 min
 Delta R.T.: -0.065 min
 Response: 2113376
 Conc: 39.55 ng/ml



#44 AR-1268-4

R.T.: 8.598 min
 Delta R.T.: 0.005 min
 Response: 476033
 Conc: 8.72 ng/ml