

Data Path : Z:\pestpcbsrv\HPCHEM1\ECD_P\Data\PP111323\
 Data File : PP061639.D
 Signal(s) : Signal #1: ECD1A.ch Signal #2: ECD2B.ch
 Acq On : 13 Nov 2023 13:46
 Operator : YP\AJ
 Sample : AR1242CCC500
 Misc :
 ALS Vial : 4 Sample Multiplier: 1

Instrument :
 ECD_P
ClientSampleId :
 AR1242CCC500

Integration File signal 1: autoint1.e
 Integration File signal 2: autoint2.e
 Quant Time: Nov 13 14:15:52 2023
 Quant Method : Z:\pestpcbsrv\HPCHEM1\ECD_P\methods\PP111123.M
 Quant Title : GC EXTRACTABLES
 QLast Update : Mon Nov 13 03:41:25 2023
 Response via : Initial Calibration
 Integrator: ChemStation

Volume Inj. : 2 µl
 Signal #1 Phase : ZB-MR1 Signal #2 Phase: ZB-MR2
 Signal #1 Info : 30Mx0.32mmx 0.50µ Signal #2 Info : 30M x 0.32mm x 0.25µm

Compound	RT#1	RT#2	Resp#1	Resp#2	ng/ml	ng/ml

System Monitoring Compounds						
1) SA Tetrachlo...	4.510	3.777	66043245	108.0E6	53.660	52.257
2) SA Decachlor...	10.351	8.930	52231417	86889592	60.929	47.773
Target Compounds						
16) L4 AR-1242-1	5.691	4.897	15271393	31731119	540.453	515.289
17) L4 AR-1242-2	5.714	4.917	22227806	41551131	523.373	512.854
18) L4 AR-1242-3	5.777	5.097	14832007	23311942	534.042	514.051
19) L4 AR-1242-4	5.875	5.183	11696473	24490895	542.434	509.888
20) L4 AR-1242-5	6.616	5.717	11051584	28618006	494.834	493.129

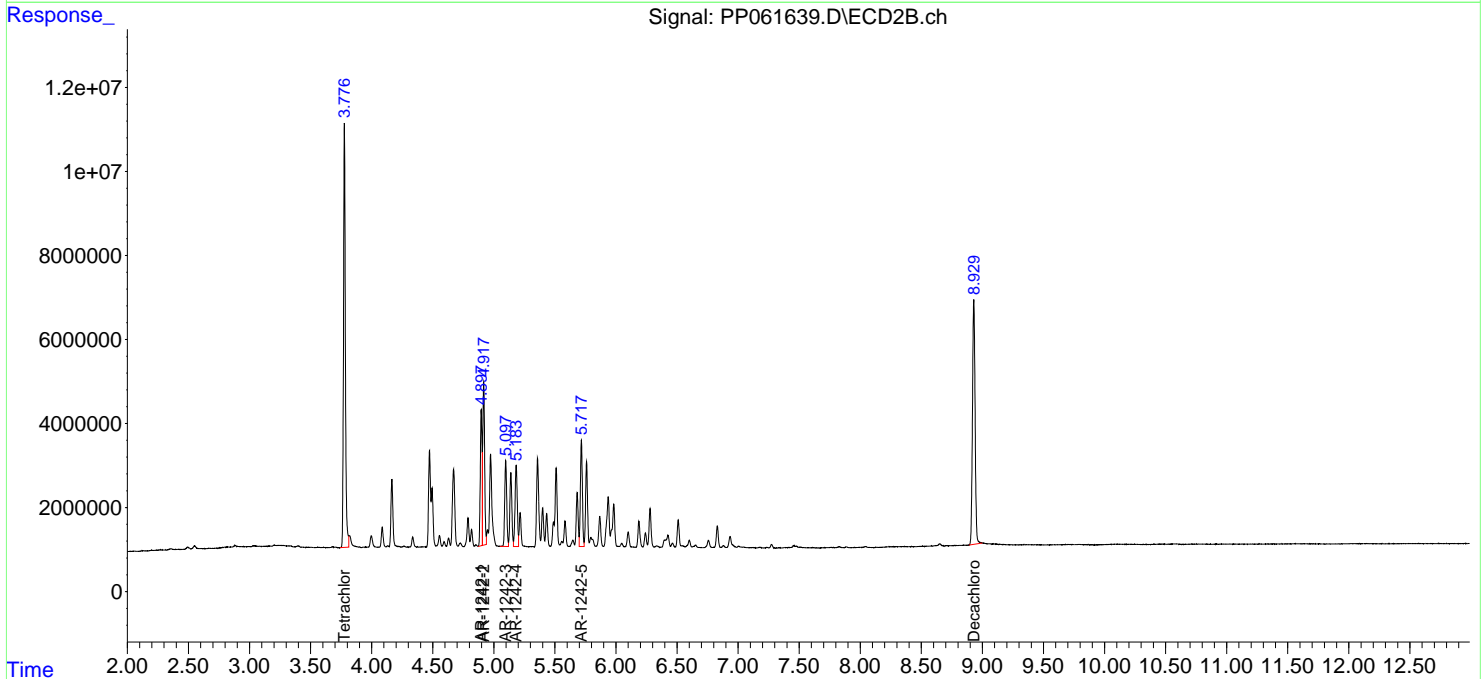
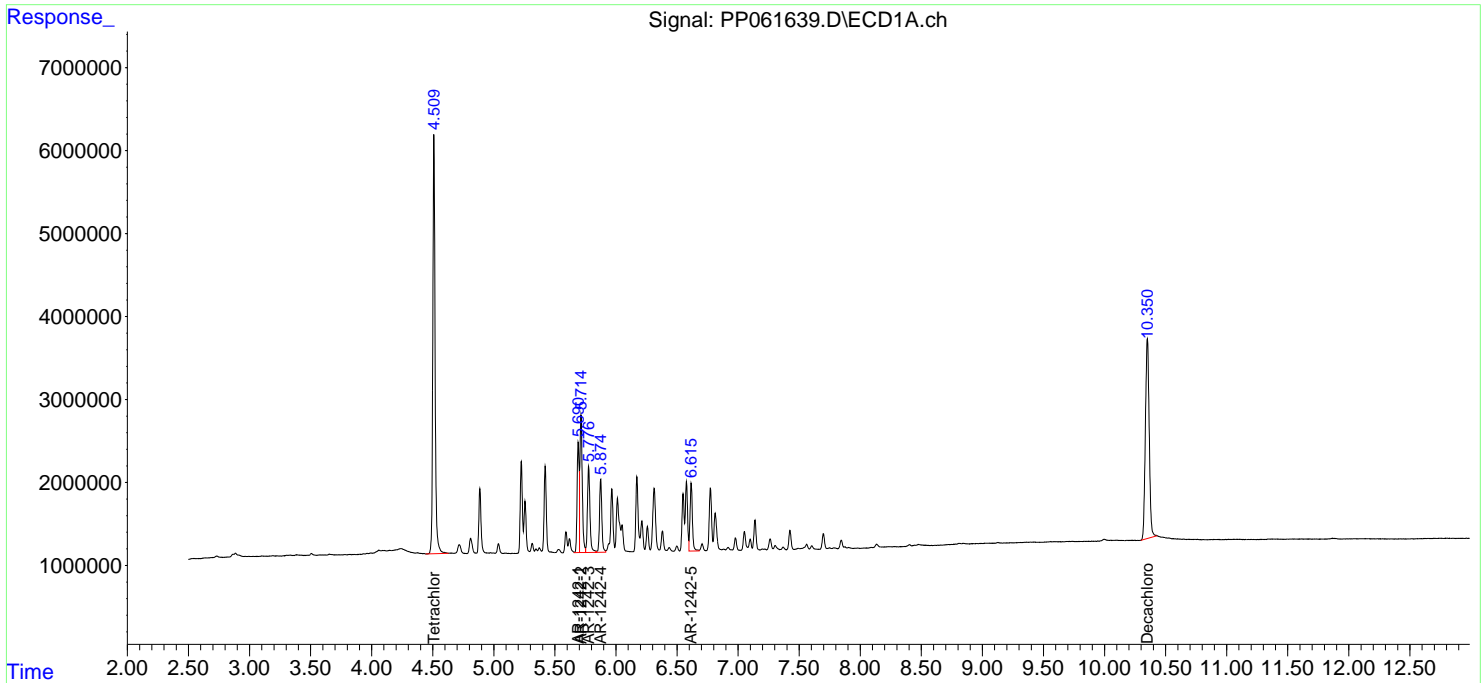
(f)=RT Delta > 1/2 Window (#)=Amounts differ by > 25% (m)=manual int.

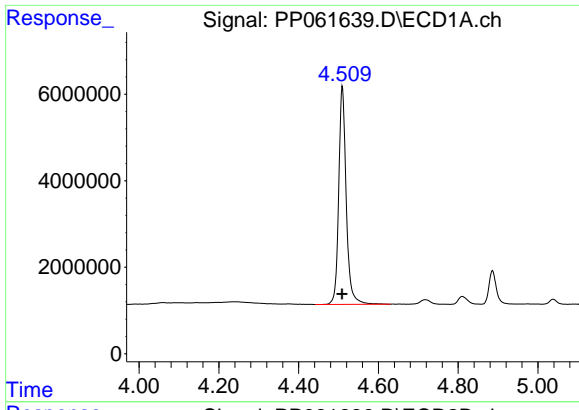
Data Path : Z:\pestpcbsrv\HPCHEM1\ECD_P\Data\PP111323\
 Data File : PP061639.D
 Signal(s) : Signal #1: ECD1A.ch Signal #2: ECD2B.ch
 Acq On : 13 Nov 2023 13:46
 Operator : YP\AJ
 Sample : AR1242CCC500
 Misc :
 ALS Vial : 4 Sample Multiplier: 1

Instrument :
 ECD_P
 ClientSampleId :
 AR1242CCC500

Integration File signal 1: autoint1.e
 Integration File signal 2: autoint2.e
 Quant Time: Nov 13 14:15:52 2023
 Quant Method : Z:\pestpcbsrv\HPCHEM1\ECD_P\methods\PP111123.M
 Quant Title : GC EXTRACTABLES
 QLast Update : Mon Nov 13 03:41:25 2023
 Response via : Initial Calibration
 Integrator: ChemStation

Volume Inj. : 2 µl
 Signal #1 Phase : ZB-MR1 Signal #2 Phase: ZB-MR2
 Signal #1 Info : 30Mx0.32mmx 0.50µ Signal #2 Info : 30M x 0.32mm x 0.25µm

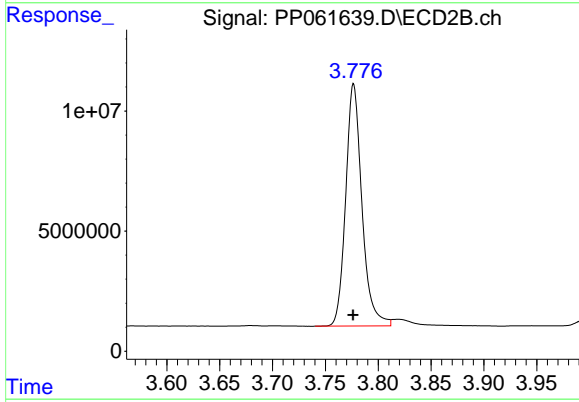




#1 Tetrachloro-m-xylene

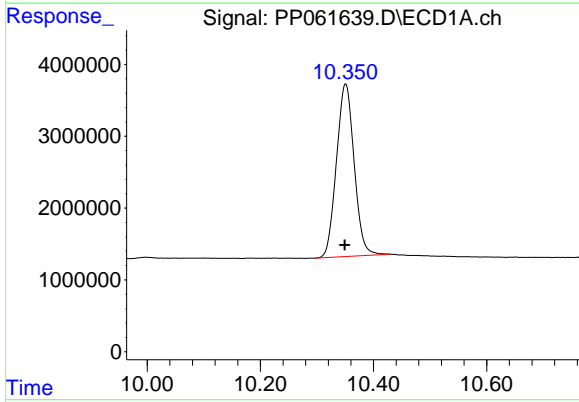
R.T.: 4.510 min
 Delta R.T.: 0.000 min
 Response: 66043245
 Conc: 53.66 ng/ml

Instrument :
 ECD_P
 ClientSampleId :
 AR1242CCC500



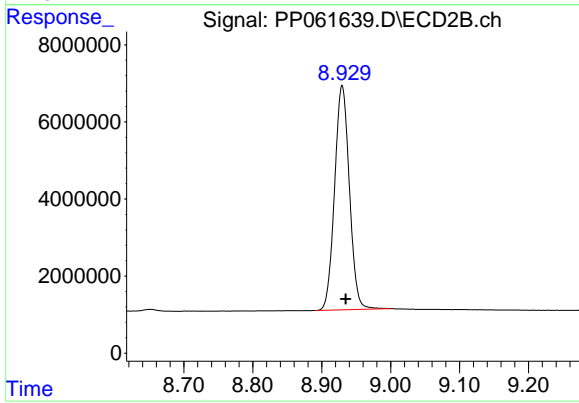
#1 Tetrachloro-m-xylene

R.T.: 3.777 min
 Delta R.T.: 0.000 min
 Response: 107966472
 Conc: 52.26 ng/ml



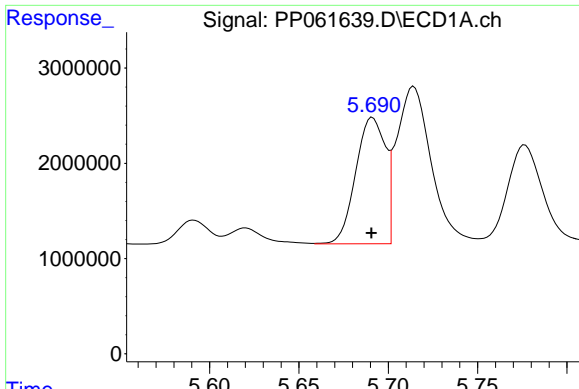
#2 Decachlorobiphenyl

R.T.: 10.351 min
 Delta R.T.: 0.002 min
 Response: 52231417
 Conc: 60.93 ng/ml



#2 Decachlorobiphenyl

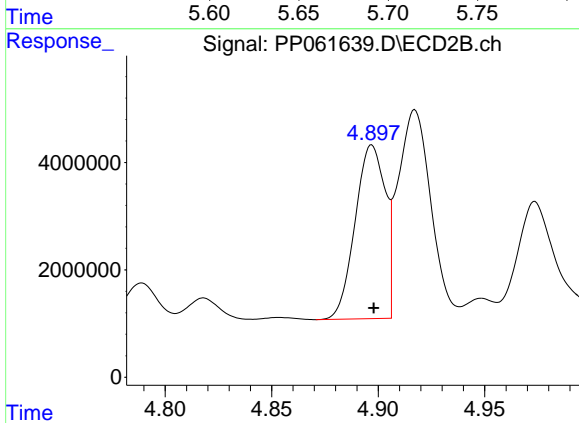
R.T.: 8.930 min
 Delta R.T.: -0.005 min
 Response: 86889592
 Conc: 47.77 ng/ml



#16 AR-1242-1

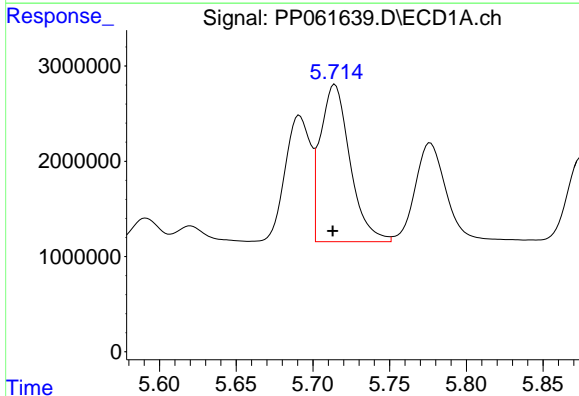
R.T.: 5.691 min
 Delta R.T.: 0.000 min
 Response: 15271393
 Conc: 540.45 ng/ml

Instrument :
 ECD_P
 ClientSampleId :
 AR1242CCC500



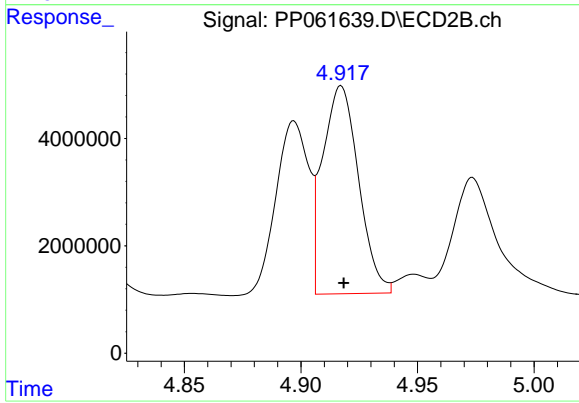
#16 AR-1242-1

R.T.: 4.897 min
 Delta R.T.: 0.000 min
 Response: 31731119
 Conc: 515.29 ng/ml



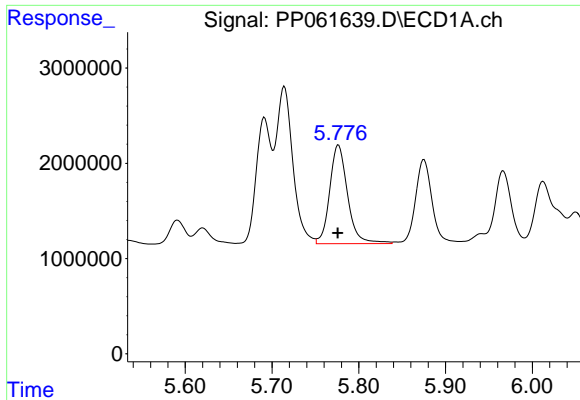
#17 AR-1242-2

R.T.: 5.714 min
 Delta R.T.: 0.001 min
 Response: 22227806
 Conc: 523.37 ng/ml



#17 AR-1242-2

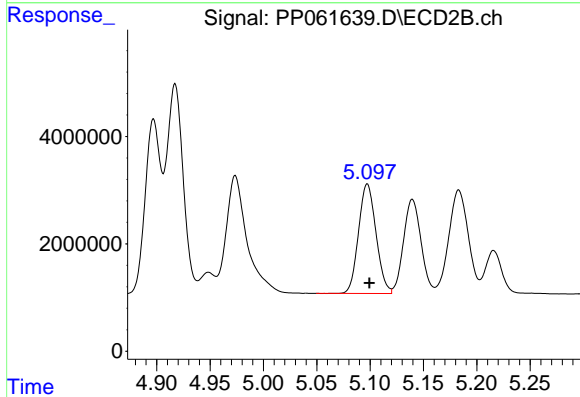
R.T.: 4.917 min
 Delta R.T.: -0.001 min
 Response: 41551131
 Conc: 512.85 ng/ml



#18 AR-1242-3

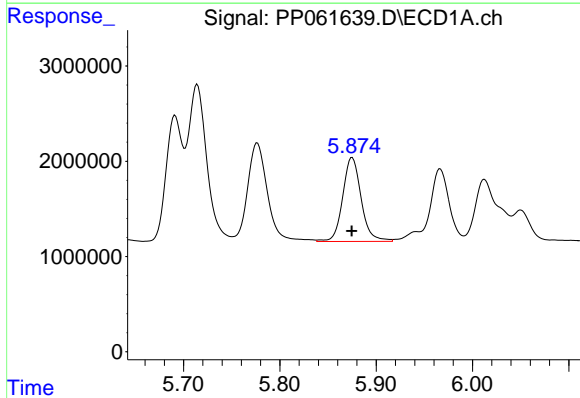
R.T.: 5.777 min
 Delta R.T.: 0.000 min
 Response: 14832007
 Conc: 534.04 ng/ml

Instrument :
 ECD_P
 ClientSampleId :
 AR1242CCC500



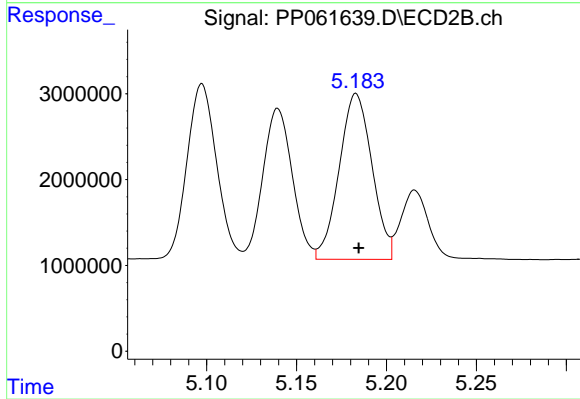
#18 AR-1242-3

R.T.: 5.097 min
 Delta R.T.: -0.002 min
 Response: 23311942
 Conc: 514.05 ng/ml



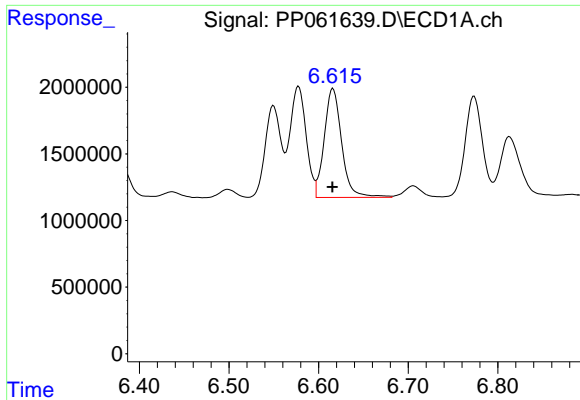
#19 AR-1242-4

R.T.: 5.875 min
 Delta R.T.: 0.000 min
 Response: 11696473
 Conc: 542.43 ng/ml



#19 AR-1242-4

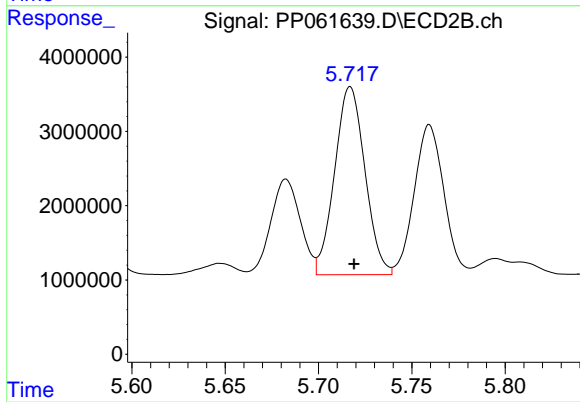
R.T.: 5.183 min
 Delta R.T.: -0.002 min
 Response: 24490895
 Conc: 509.89 ng/ml



#20 AR-1242-5

R.T.: 6.616 min
Delta R.T.: 0.000 min
Response: 11051584
Conc: 494.83 ng/ml

Instrument :
ECD_P
ClientSampleId :
AR1242CCC500



#20 AR-1242-5

R.T.: 5.717 min
Delta R.T.: -0.002 min
Response: 28618006
Conc: 493.13 ng/ml