

Data Path : Z:\pestpcbsrv\HPCHEM1\ECD_P\Data\PP111522\
 Data File : PP053326.D
 Signal(s) : Signal #1: ECD1A.ch Signal #2: ECD2B.ch
 Acq On : 15 Nov 2022 16:30
 Operator : YP\AJ
 Sample : AR1242CCC500
 Misc :
 ALS Vial : 4 Sample Multiplier: 1

Instrument :
 ECD_P
 ClientSampleId :

Integration File signal 1: autoint1.e
 Integration File signal 2: autoint2.e
 Quant Time: Nov 15 17:08:32 2022
 Quant Method : Z:\pestpcbsrv\HPCHEM1\ECD_P\methods\PP110822.M
 Quant Title : GC EXTRACTABLES
 QLast Update : Wed Nov 09 05:50:05 2022
 Response via : Initial Calibration
 Integrator: ChemStation

Volume Inj. : 2 µl
 Signal #1 Phase : ZB-MR1 Signal #2 Phase: ZB-MR2
 Signal #1 Info : 30Mx0.32mmx 0.50µ Signal #2 Info : 30M x 0.32mm x 0.25µm

Compound	RT#1	RT#2	Resp#1	Resp#2	ng/ml	ng/ml
System Monitoring Compounds						
1) SA Tetrachlo...	4.399	3.645	98905730	85367312	51.451	56.751
2) SA Decachlor...	10.198	8.724	71361941	84300369	52.629	44.976
Target Compounds						
3) L1 AR-1016-1	5.572	4.745	23120479	22875688	371.653	407.867
4) L1 AR-1016-2	5.595	4.763	32882039	31829224	355.762	410.075
5) L1 AR-1016-3	5.658	4.942	20720882	17277431	366.116	411.470
6) L1 AR-1016-4	5.756	4.984	16636664	14424739	365.737	412.718
7) L1 AR-1016-5	6.053	5.201	16729020	19290239	369.581	424.707
8) L2 AR-1221-1	4.604	3.860	2695829	2586455	119.945	135.462
9) L2 AR-1221-2	4.695	3.948	3943763	3943740	237.345	269.233
10) L2 AR-1221-3	4.771	4.024	13817341	13705751	274.353	305.159
11) L3 AR-1232-1	4.771	4.024	13817341	13705751	360.331	405.576
12) L3 AR-1232-2	5.303	4.763	17735913	31829224	787.991	914.475
13) L3 AR-1232-3	5.595	4.942	32882039	17277431	810.148	926.055
14) L3 AR-1232-4	5.756	5.027	16636664	17926343	824.325	1018.328
15) L3 AR-1232-5	5.848	5.201	14705160	19290239	886.868	969.254
16) L4 AR-1242-1	5.572	4.745	23120479	22875688	474.425	518.853
17) L4 AR-1242-2	5.595	4.763	32882039	31829224	456.095	514.652
18) L4 AR-1242-3	5.658	4.942	20720882	17277431	462.696	520.228
19) L4 AR-1242-4	5.756	5.027	16636664	17926343	462.599	512.759
20) L4 AR-1242-5	6.497	5.558	17331549	22075793	474.713	504.119
21) L5 AR-1248-1	5.572	4.745	23120479	22875688	619.896	667.201
22) L5 AR-1248-2	5.848	4.984	14705160	14424739	268.771	300.376
23) L5 AR-1248-3	6.053	5.027	16729020	17926343	280.742	361.765 #
24) L5 AR-1248-4	6.458	5.201	16396170	19290239	265.757	326.628
25) L5 AR-1248-5	6.497	5.599	17331549	17297557	287.318	314.421
26) L6 AR-1254-1	6.430	5.558	13186638	22075793	186.525	243.526 #
27) L6 AR-1254-2	6.654	5.708	15887839	6701290	151.241	82.533 #
28) L6 AR-1254-3	7.019	6.116	7587124	8897577	73.968	69.997
29) L6 AR-1254-4	7.306	6.347	4893572	5954545	70.342	75.514
30) L6 AR-1254-5	7.727	6.769	2380961	3610397	30.060	28.584
31) L7 AR-1260-1	7.185	6.262	585940	5121231	7.165	55.866 #
32) L7 AR-1260-2	7.440	6.437	2178849	2128433	23.528	18.496
33) L7 AR-1260-3	7.803	6.592	209178	1874972	3.354	17.473 #
34) L7 AR-1260-4	8.017f	7.070	2018358	173218	26.943	2.094 #
35) L7 AR-1260-5	8.353	7.314	683907	279126	5.404	1.474 #
36) L8 AR-1262-1	7.803	6.862	209178	136964	2.177	2.601
37) L8 AR-1262-2	8.353	7.070	683907	173218	4.518	1.494 #
38) L8 AR-1262-3	8.680	7.600	367380	-57647	3.546	N.D. #
39) L8 AR-1262-4	8.764	7.662	62249	388907	0.770	2.371 #
40) L8 AR-1262-5	9.422	8.179	27823	255849	0.547	3.368 #
41) L9 AR-1268-1	8.680	7.600	367380	-57647	1.939	N.D. #

Data Path : Z:\pestpcbsrv\HPCHEM1\ECD_P\Data\PP111522\
 Data File : PP053326.D
 Signal(s) : Signal #1: ECD1A.ch Signal #2: ECD2B.ch
 Acq On : 15 Nov 2022 16:30
 Operator : YP\AJ
 Sample : AR1242CCC500
 Misc :
 ALS Vial : 4 Sample Multiplier: 1

Instrument :
 ECD_P
 ClientSampleId :

Integration File signal 1: autoint1.e
 Integration File signal 2: autoint2.e
 Quant Time: Nov 15 17:08:32 2022
 Quant Method : Z:\pestpcbsrv\HPCHEM1\ECD_P\methods\PP110822.M
 Quant Title : GC EXTRACTABLES
 QLast Update : Wed Nov 09 05:50:05 2022
 Response via : Initial Calibration
 Integrator: ChemStation

Volume Inj. : 2 µl
 Signal #1 Phase : ZB-MR1 Signal #2 Phase: ZB-MR2
 Signal #1 Info : 30Mx0.32mmx 0.50µ Signal #2 Info : 30M x 0.32mm x 0.25µm

	Compound	RT#1	RT#2	Resp#1	Resp#2	ng/ml	ng/ml
42)	L9 AR-1268-2	8.764	7.662	62249	388907	0.367	1.629 #
43)	L9 AR-1268-3	9.001	7.872	87884	190900	0.587	0.928 #
44)	L9 AR-1268-4	9.422	8.179	27823	255849	0.497	3.108 #
45)	L9 AR-1268-5	9.858	8.462	423517	753846	0.919	1.136

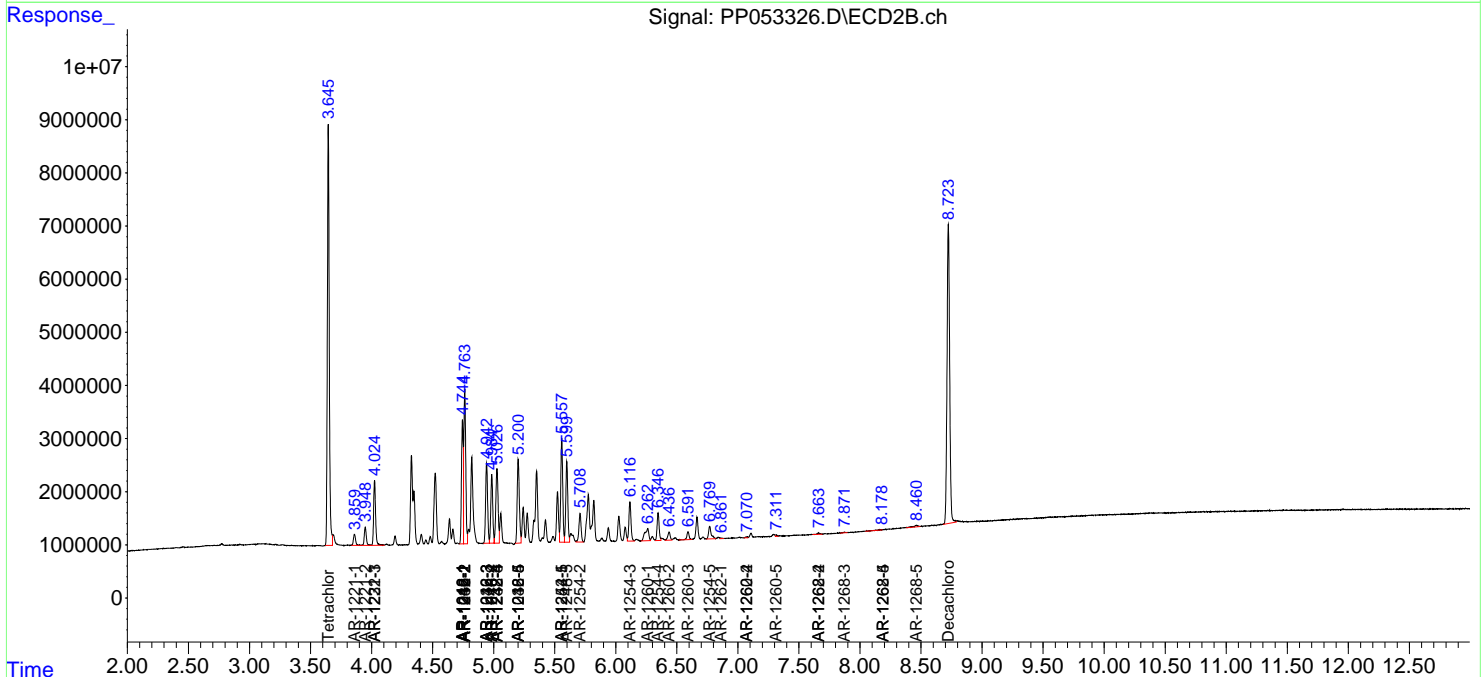
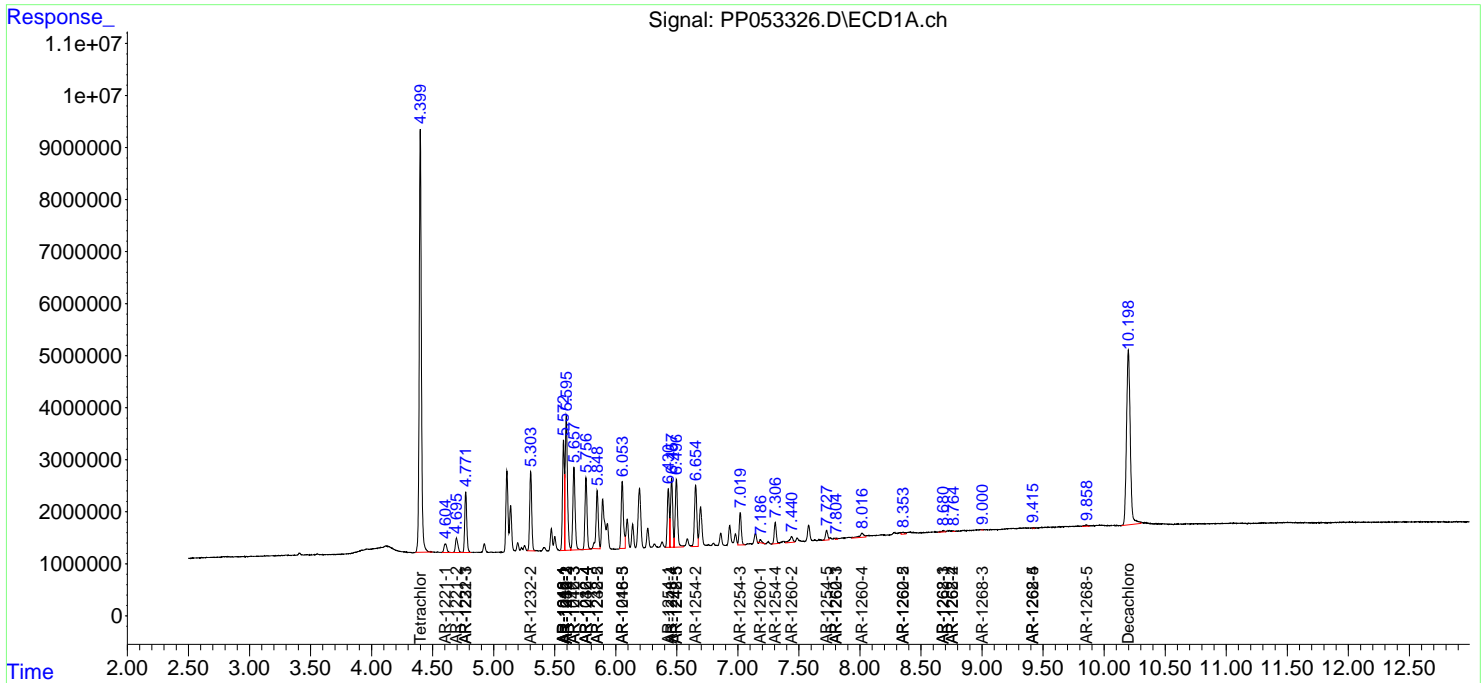
(f)=RT Delta > 1/2 Window (#)=Amounts differ by > 25% (m)=manual int.

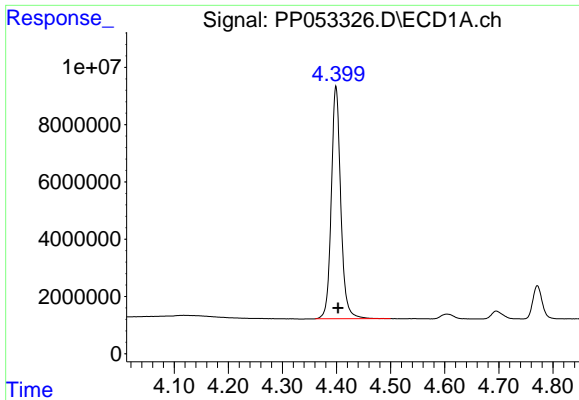
Data Path : Z:\pestpcbsrv\HPCHEM1\ECD_P\Data\PP111522\
 Data File : PP053326.D
 Signal(s) : Signal #1: ECD1A.ch Signal #2: ECD2B.ch
 Acq On : 15 Nov 2022 16:30
 Operator : YP\AJ
 Sample : AR1242CCC500
 Misc :
 ALS Vial : 4 Sample Multiplier: 1

Instrument :
 ECD_P
 ClientSampleId :

Integration File signal 1: autoint1.e
 Integration File signal 2: autoint2.e
 Quant Time: Nov 15 17:08:32 2022
 Quant Method : Z:\pestpcbsrv\HPCHEM1\ECD_P\methods\PP110822.M
 Quant Title : GC EXTRACTABLES
 QLast Update : Wed Nov 09 05:50:05 2022
 Response via : Initial Calibration
 Integrator: ChemStation

Volume Inj. : 2 µl
 Signal #1 Phase : ZB-MR1 Signal #2 Phase: ZB-MR2
 Signal #1 Info : 30Mx0.32mmx 0.50µ Signal #2 Info : 30M x 0.32mm x 0.25µm

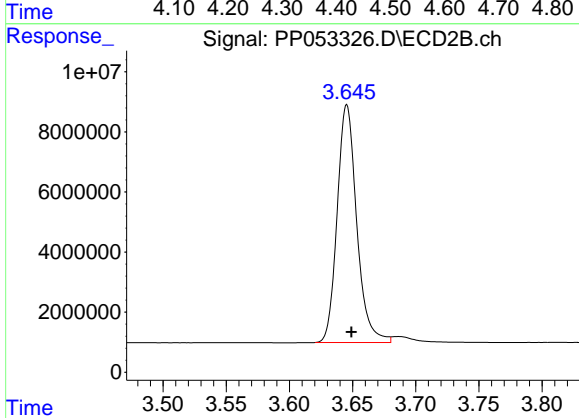




#1 Tetrachloro-m-xylene

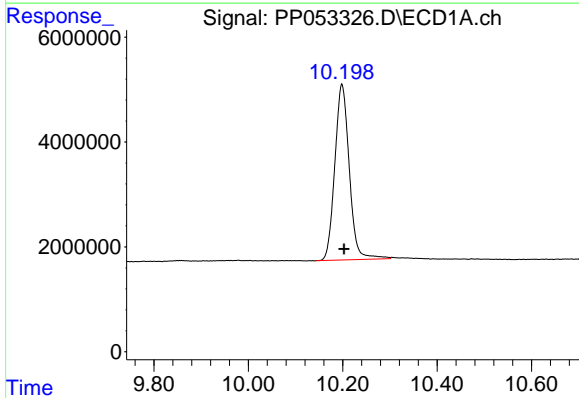
R.T.: 4.399 min
Delta R.T.: -0.004 min
Response: 98905730
Conc: 51.45 ng/ml

Instrument :
ECD_P
ClientSampleId :



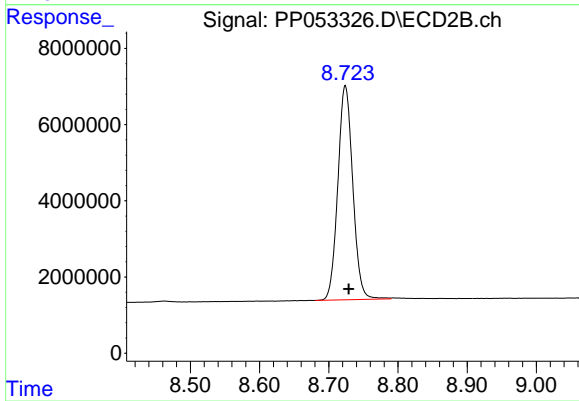
#1 Tetrachloro-m-xylene

R.T.: 3.645 min
Delta R.T.: -0.003 min
Response: 85367312
Conc: 56.75 ng/ml



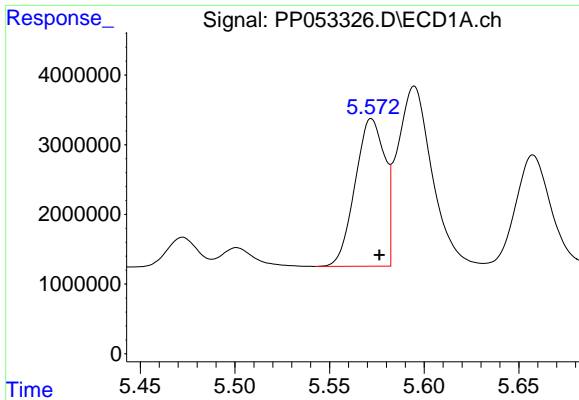
#2 Decachlorobiphenyl

R.T.: 10.198 min
Delta R.T.: -0.005 min
Response: 71361941
Conc: 52.63 ng/ml



#2 Decachlorobiphenyl

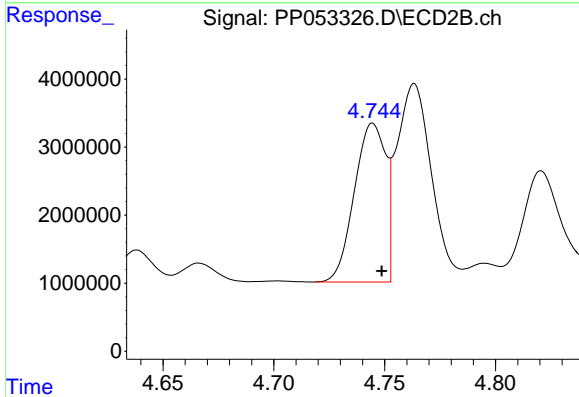
R.T.: 8.724 min
Delta R.T.: -0.005 min
Response: 84300369
Conc: 44.98 ng/ml



#3 AR-1016-1

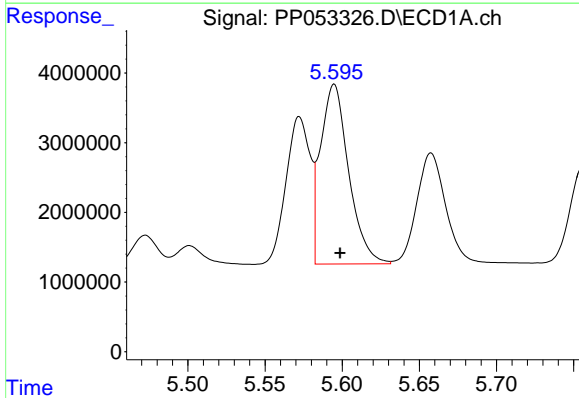
R.T.: 5.572 min
 Delta R.T.: -0.004 min
 Response: 23120479
 Conc: 371.65 ng/ml

Instrument :
 ECD_P
 ClientSampleId :



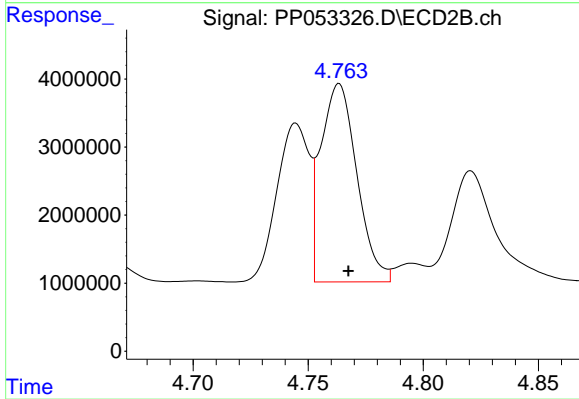
#3 AR-1016-1

R.T.: 4.745 min
 Delta R.T.: -0.004 min
 Response: 22875688
 Conc: 407.87 ng/ml



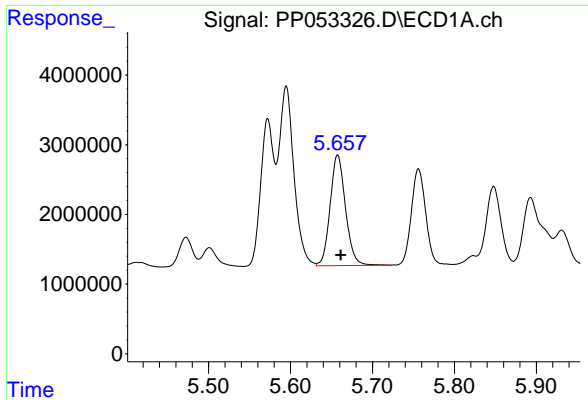
#4 AR-1016-2

R.T.: 5.595 min
 Delta R.T.: -0.004 min
 Response: 32882039
 Conc: 355.76 ng/ml



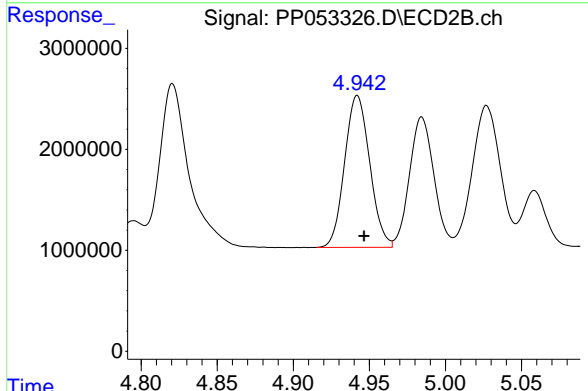
#4 AR-1016-2

R.T.: 4.763 min
 Delta R.T.: -0.004 min
 Response: 31829224
 Conc: 410.08 ng/ml

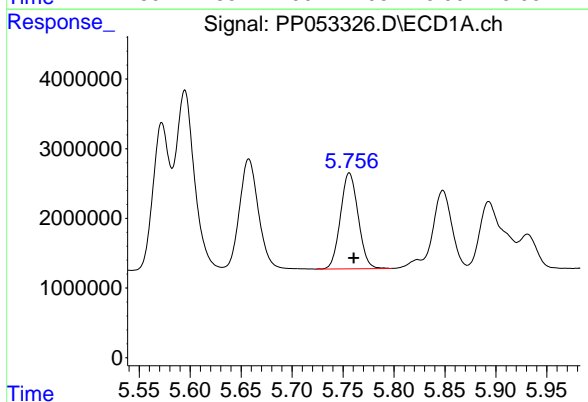


#5 AR-1016-3
 R.T.: 5.658 min
 Delta R.T.: -0.004 min
 Response: 20720882
 Conc: 366.12 ng/ml

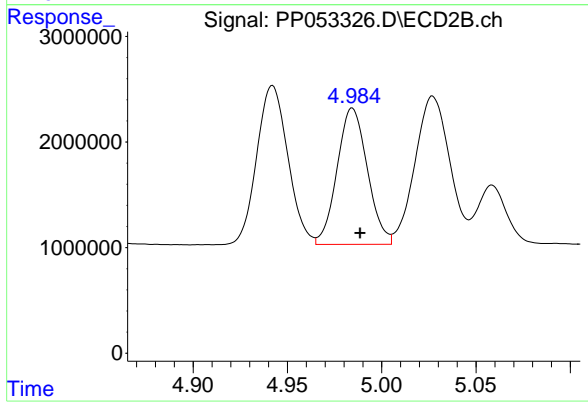
Instrument :
 ECD_P
 ClientSampleId :



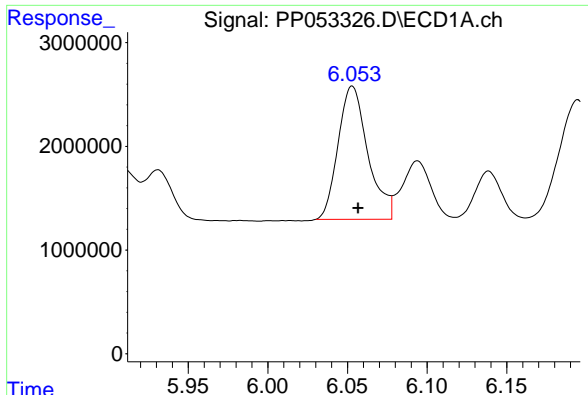
#5 AR-1016-3
 R.T.: 4.942 min
 Delta R.T.: -0.004 min
 Response: 17277431
 Conc: 411.47 ng/ml



#6 AR-1016-4
 R.T.: 5.756 min
 Delta R.T.: -0.004 min
 Response: 16636664
 Conc: 365.74 ng/ml



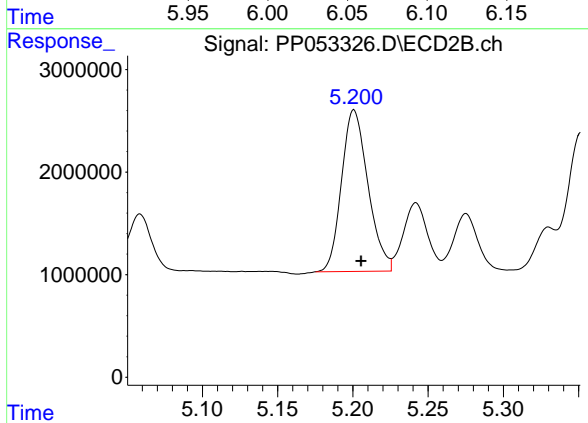
#6 AR-1016-4
 R.T.: 4.984 min
 Delta R.T.: -0.004 min
 Response: 14424739
 Conc: 412.72 ng/ml



#7 AR-1016-5

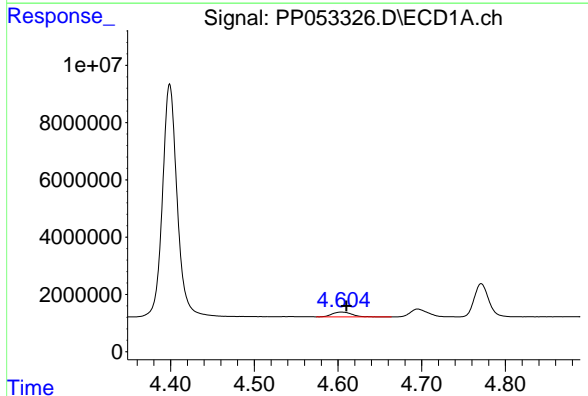
R.T.: 6.053 min
 Delta R.T.: -0.004 min
 Response: 16729020
 Conc: 369.58 ng/ml

Instrument :
 ECD_P
 ClientSampleId :



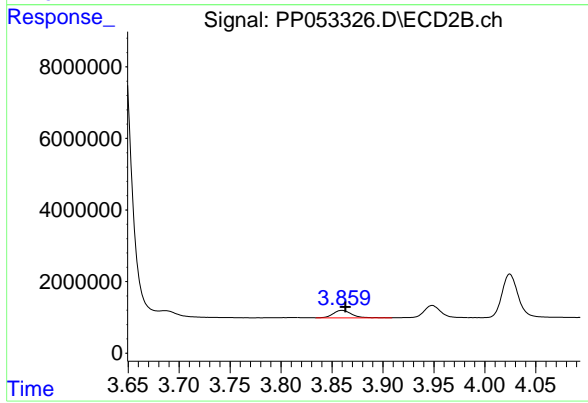
#7 AR-1016-5

R.T.: 5.201 min
 Delta R.T.: -0.005 min
 Response: 19290239
 Conc: 424.71 ng/ml



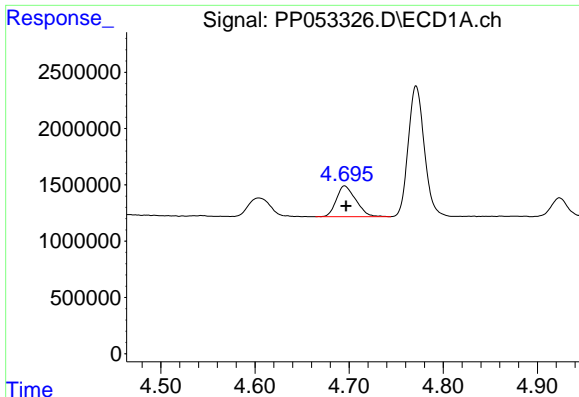
#8 AR-1221-1

R.T.: 4.604 min
 Delta R.T.: -0.006 min
 Response: 2695829
 Conc: 119.94 ng/ml



#8 AR-1221-1

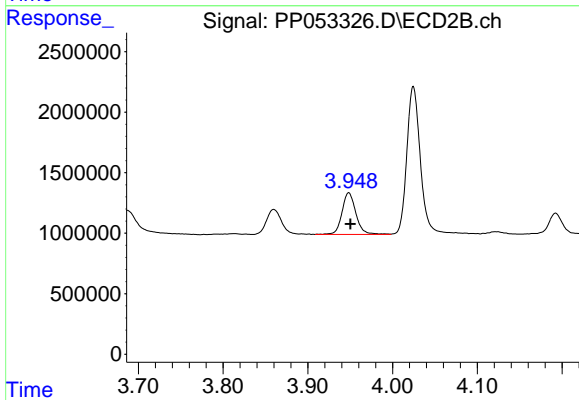
R.T.: 3.860 min
 Delta R.T.: -0.004 min
 Response: 2586455
 Conc: 135.46 ng/ml



#9 AR-1221-2

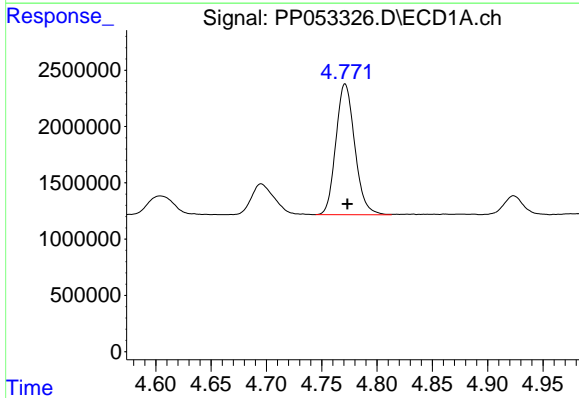
R.T.: 4.695 min
 Delta R.T.: -0.002 min
 Response: 3943763
 Conc: 237.35 ng/ml

Instrument :
 ECD_P
 ClientSampleId :



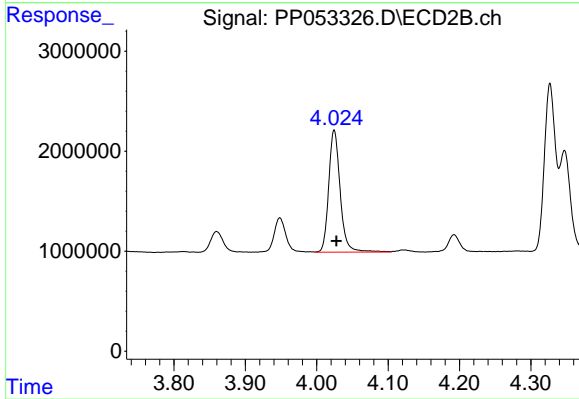
#9 AR-1221-2

R.T.: 3.948 min
 Delta R.T.: -0.002 min
 Response: 3943740
 Conc: 269.23 ng/ml



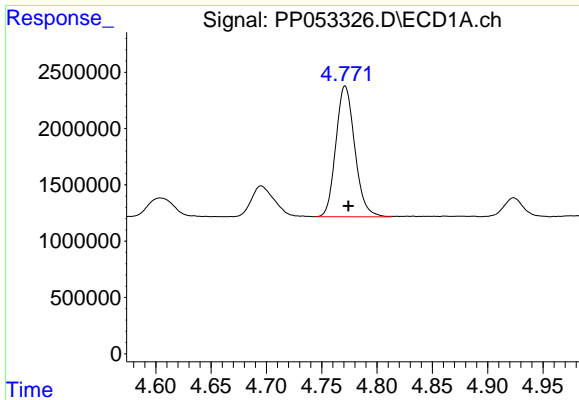
#10 AR-1221-3

R.T.: 4.771 min
 Delta R.T.: -0.002 min
 Response: 13817341
 Conc: 274.35 ng/ml



#10 AR-1221-3

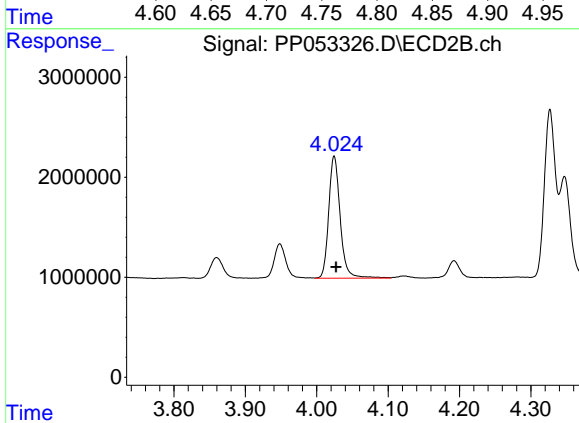
R.T.: 4.024 min
 Delta R.T.: -0.003 min
 Response: 13705751
 Conc: 305.16 ng/ml



#11 AR-1232-1

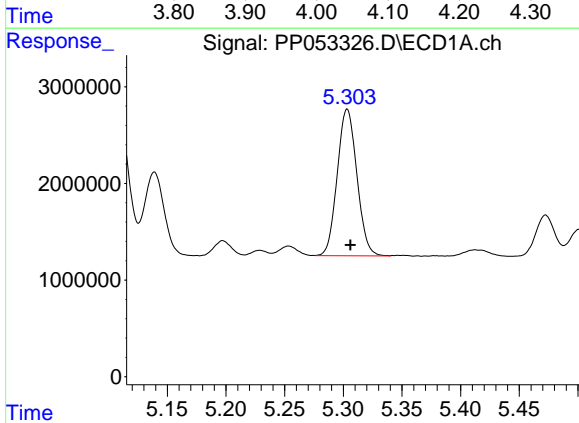
R.T.: 4.771 min
 Delta R.T.: -0.003 min
 Response: 13817341
 Conc: 360.33 ng/ml

Instrument :
 ECD_P
 ClientSampleId :



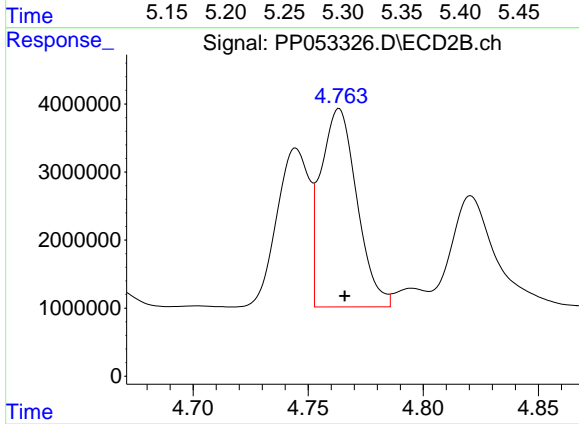
#11 AR-1232-1

R.T.: 4.024 min
 Delta R.T.: -0.003 min
 Response: 13705751
 Conc: 405.58 ng/ml



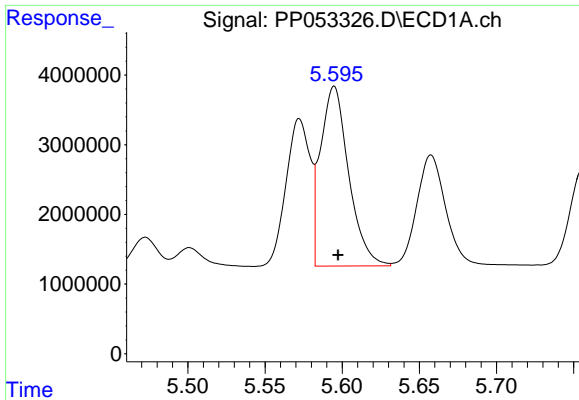
#12 AR-1232-2

R.T.: 5.303 min
 Delta R.T.: -0.003 min
 Response: 17735913
 Conc: 787.99 ng/ml



#12 AR-1232-2

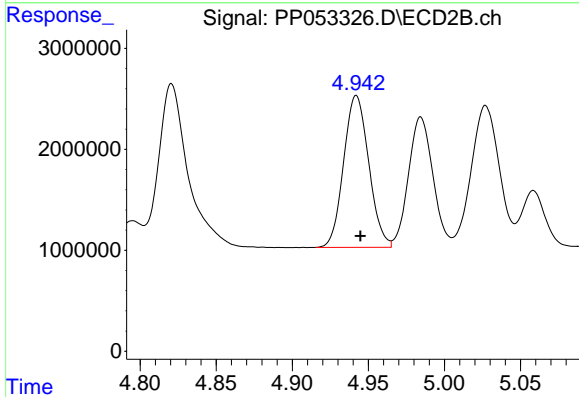
R.T.: 4.763 min
 Delta R.T.: -0.003 min
 Response: 31829224
 Conc: 914.48 ng/ml



#13 AR-1232-3

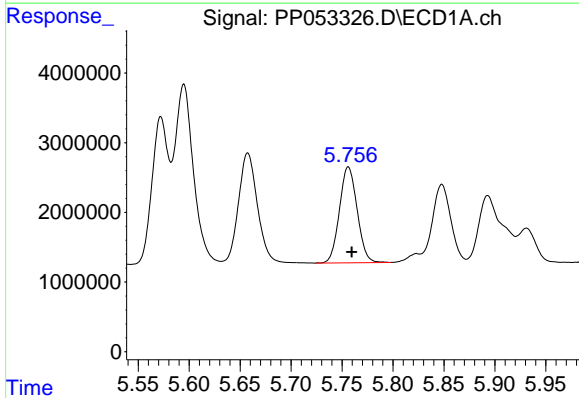
R.T.: 5.595 min
 Delta R.T.: -0.002 min
 Response: 32882039
 Conc: 810.15 ng/ml

Instrument :
 ECD_P
 ClientSampleId :



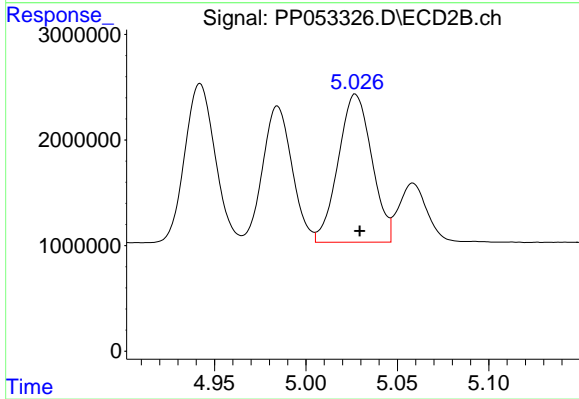
#13 AR-1232-3

R.T.: 4.942 min
 Delta R.T.: -0.003 min
 Response: 17277431
 Conc: 926.05 ng/ml



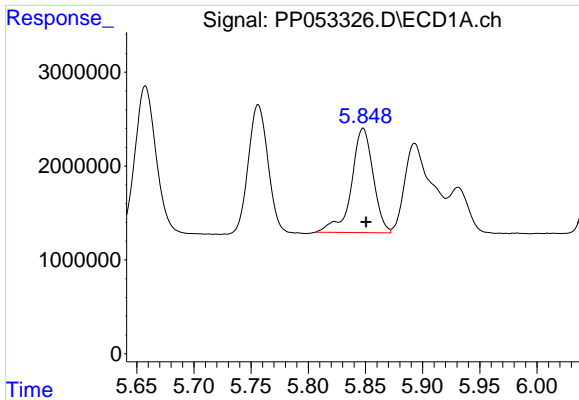
#14 AR-1232-4

R.T.: 5.756 min
 Delta R.T.: -0.003 min
 Response: 16636664
 Conc: 824.33 ng/ml



#14 AR-1232-4

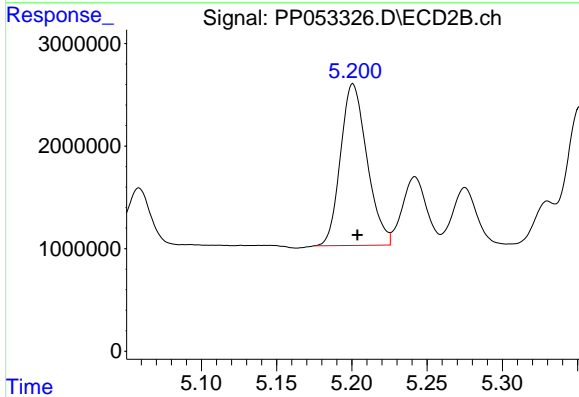
R.T.: 5.027 min
 Delta R.T.: -0.002 min
 Response: 17926343
 Conc: 1018.33 ng/ml



#15 AR-1232-5

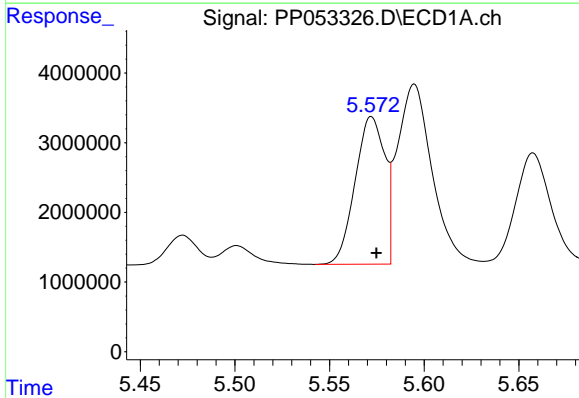
R.T.: 5.848 min
 Delta R.T.: -0.003 min
 Response: 14705160
 Conc: 886.87 ng/ml

Instrument :
 ECD_P
 ClientSampleId :



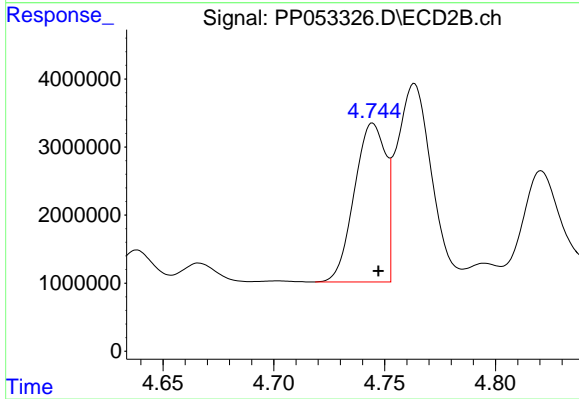
#15 AR-1232-5

R.T.: 5.201 min
 Delta R.T.: -0.003 min
 Response: 19290239
 Conc: 969.25 ng/ml



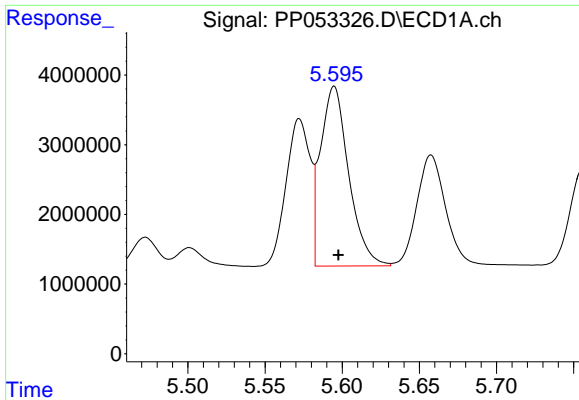
#16 AR-1242-1

R.T.: 5.572 min
 Delta R.T.: -0.003 min
 Response: 23120479
 Conc: 474.43 ng/ml



#16 AR-1242-1

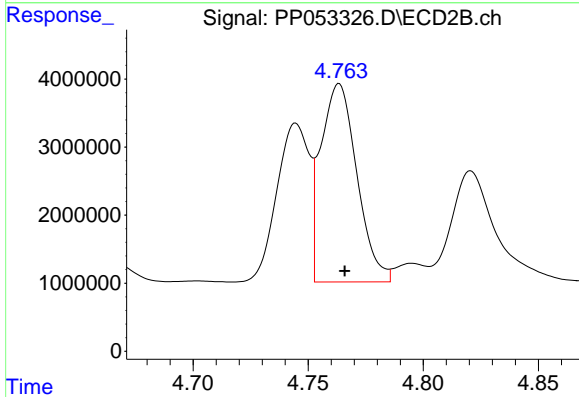
R.T.: 4.745 min
 Delta R.T.: -0.002 min
 Response: 22875688
 Conc: 518.85 ng/ml



#17 AR-1242-2

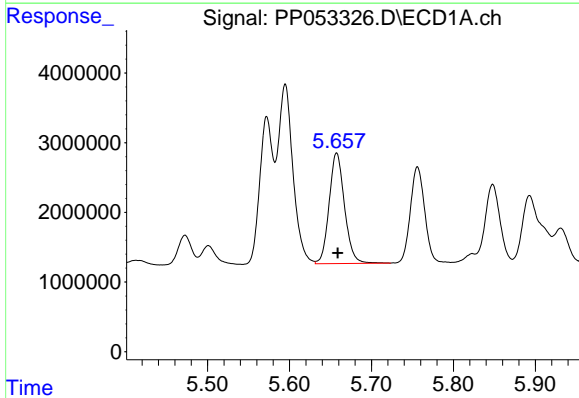
R.T.: 5.595 min
 Delta R.T.: -0.003 min
 Response: 32882039
 Conc: 456.09 ng/ml

Instrument :
 ECD_P
 ClientSampleId :



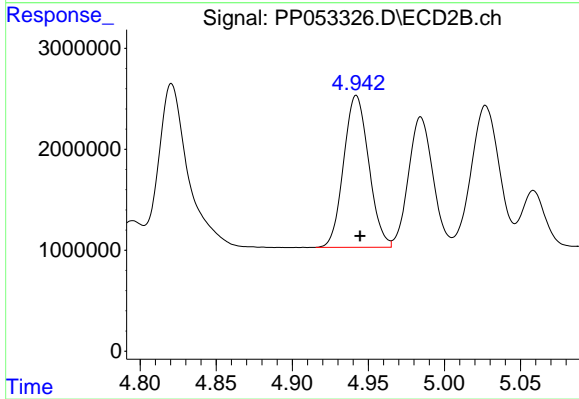
#17 AR-1242-2

R.T.: 4.763 min
 Delta R.T.: -0.003 min
 Response: 31829224
 Conc: 514.65 ng/ml



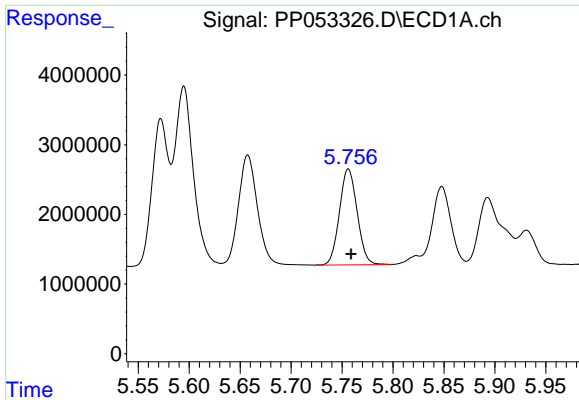
#18 AR-1242-3

R.T.: 5.658 min
 Delta R.T.: -0.001 min
 Response: 20720882
 Conc: 462.70 ng/ml



#18 AR-1242-3

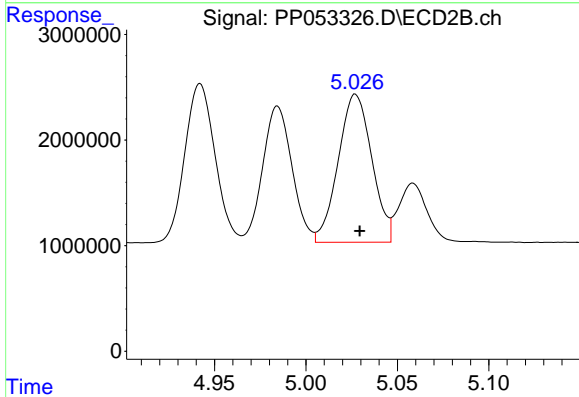
R.T.: 4.942 min
 Delta R.T.: -0.003 min
 Response: 17277431
 Conc: 520.23 ng/ml



#19 AR-1242-4

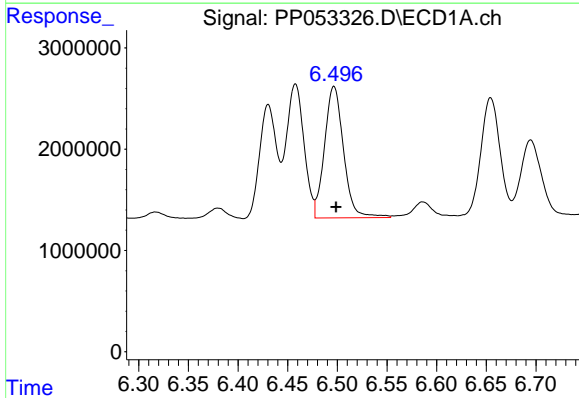
R.T.: 5.756 min
 Delta R.T.: -0.003 min
 Response: 16636664
 Conc: 462.60 ng/ml

Instrument :
 ECD_P
 ClientSampleId :



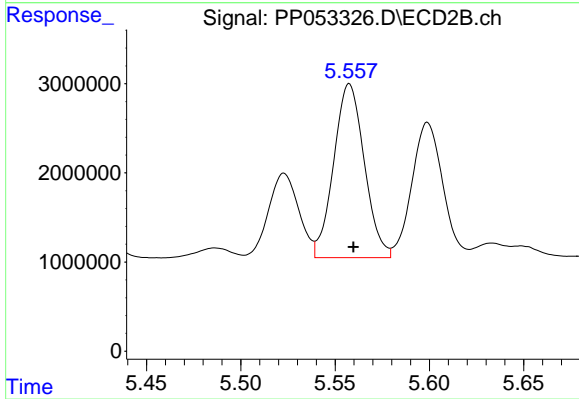
#19 AR-1242-4

R.T.: 5.027 min
 Delta R.T.: -0.002 min
 Response: 17926343
 Conc: 512.76 ng/ml



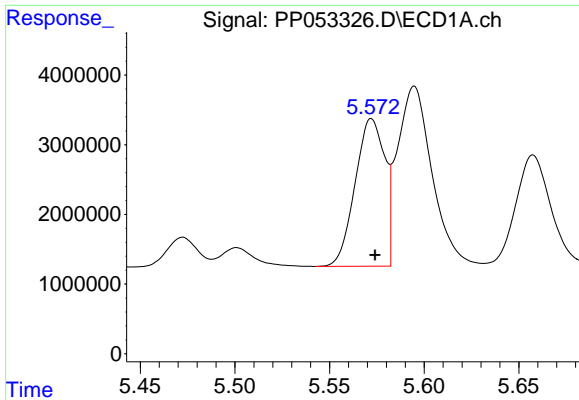
#20 AR-1242-5

R.T.: 6.497 min
 Delta R.T.: -0.002 min
 Response: 17331549
 Conc: 474.71 ng/ml



#20 AR-1242-5

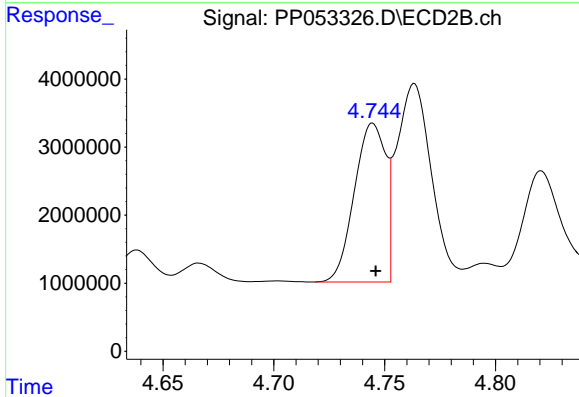
R.T.: 5.558 min
 Delta R.T.: -0.002 min
 Response: 22075793
 Conc: 504.12 ng/ml



#21 AR-1248-1

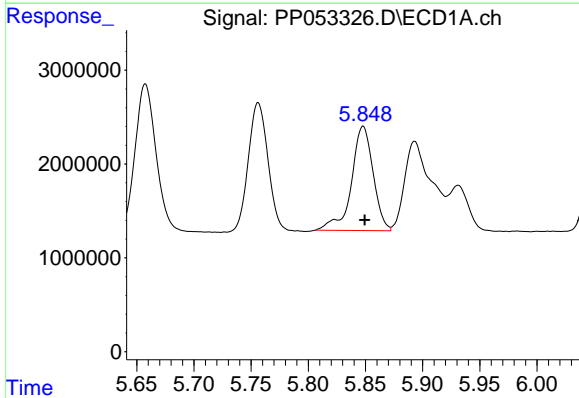
R.T.: 5.572 min
 Delta R.T.: -0.002 min
 Response: 23120479
 Conc: 619.90 ng/ml

Instrument :
 ECD_P
 ClientSampleId :



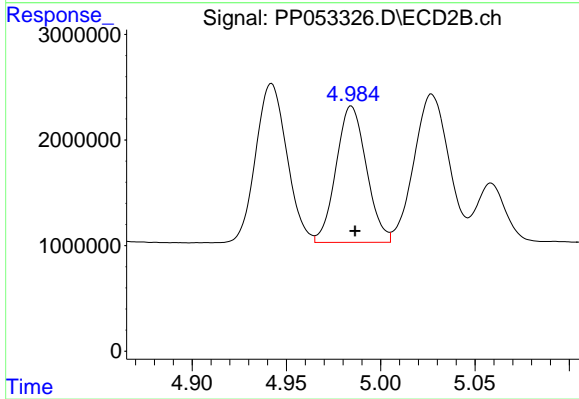
#21 AR-1248-1

R.T.: 4.745 min
 Delta R.T.: -0.001 min
 Response: 22875688
 Conc: 667.20 ng/ml



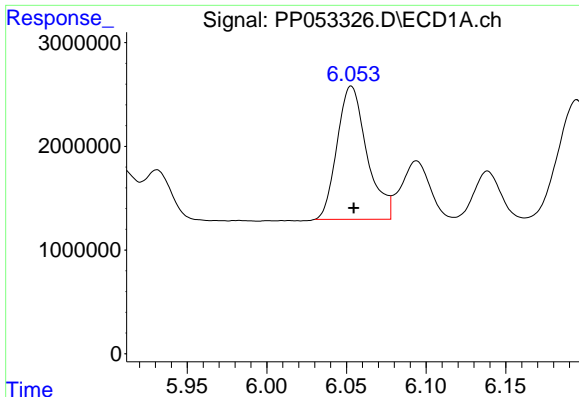
#22 AR-1248-2

R.T.: 5.848 min
 Delta R.T.: -0.001 min
 Response: 14705160
 Conc: 268.77 ng/ml



#22 AR-1248-2

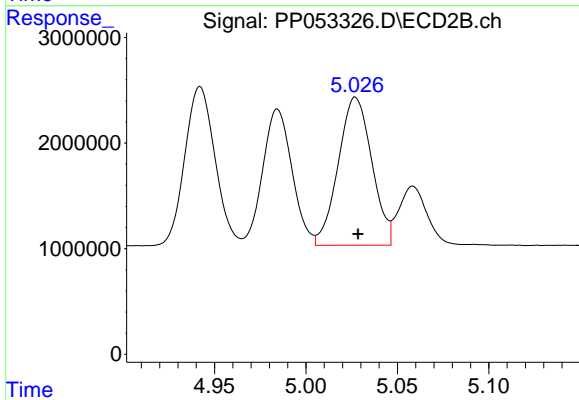
R.T.: 4.984 min
 Delta R.T.: -0.002 min
 Response: 14424739
 Conc: 300.38 ng/ml



#23 AR-1248-3

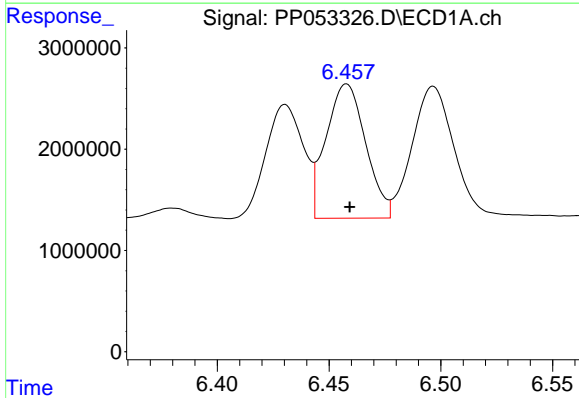
R.T.: 6.053 min
 Delta R.T.: -0.002 min
 Response: 16729020
 Conc: 280.74 ng/ml

Instrument :
 ECD_P
 ClientSampleId :



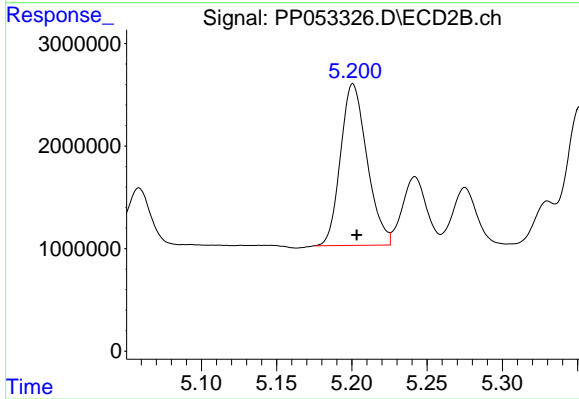
#23 AR-1248-3

R.T.: 5.027 min
 Delta R.T.: -0.001 min
 Response: 17926343
 Conc: 361.76 ng/ml



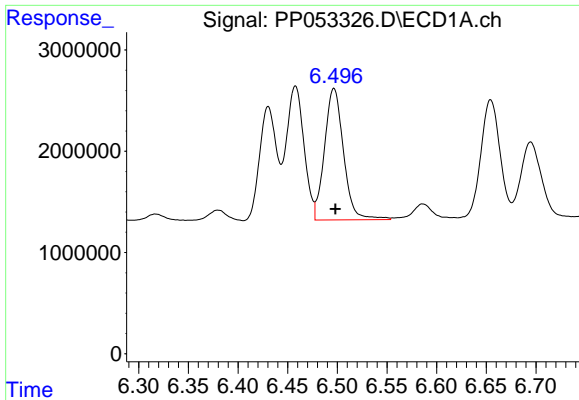
#24 AR-1248-4

R.T.: 6.458 min
 Delta R.T.: -0.002 min
 Response: 16396170
 Conc: 265.76 ng/ml



#24 AR-1248-4

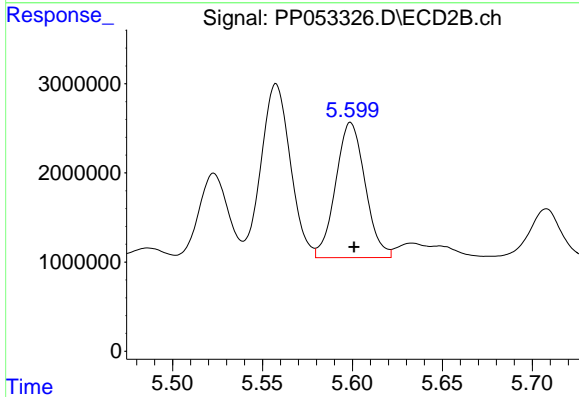
R.T.: 5.201 min
 Delta R.T.: -0.002 min
 Response: 19290239
 Conc: 326.63 ng/ml



#25 AR-1248-5

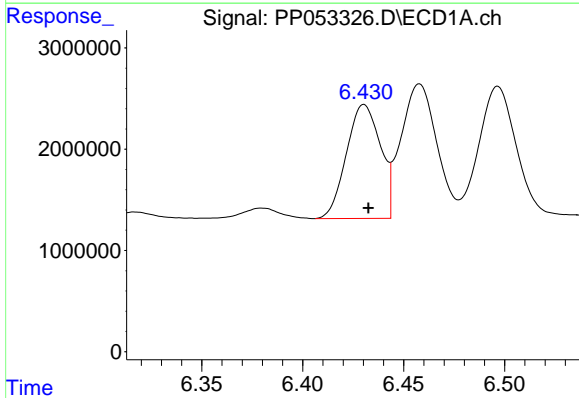
R.T.: 6.497 min
 Delta R.T.: -0.002 min
 Response: 17331549
 Conc: 287.32 ng/ml

Instrument :
 ECD_P
 ClientSampleId :



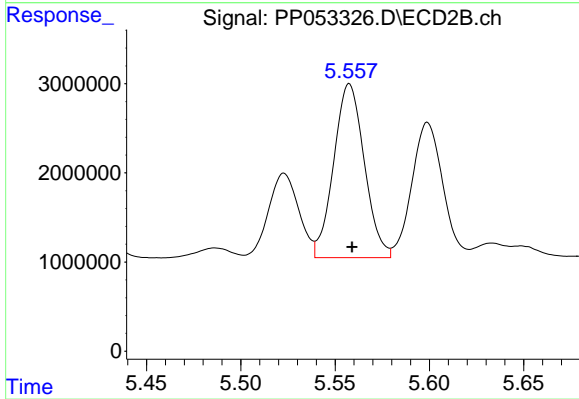
#25 AR-1248-5

R.T.: 5.599 min
 Delta R.T.: -0.002 min
 Response: 17297557
 Conc: 314.42 ng/ml



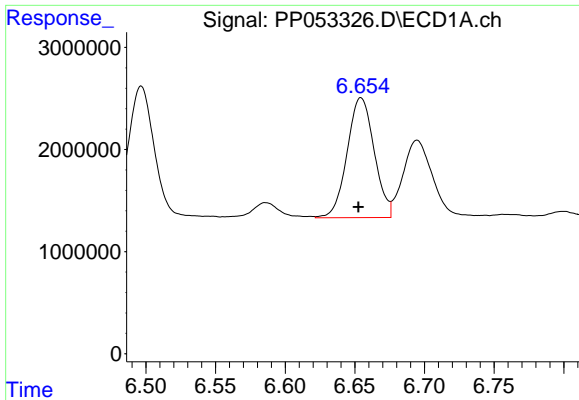
#26 AR-1254-1

R.T.: 6.430 min
 Delta R.T.: -0.002 min
 Response: 13186638
 Conc: 186.52 ng/ml



#26 AR-1254-1

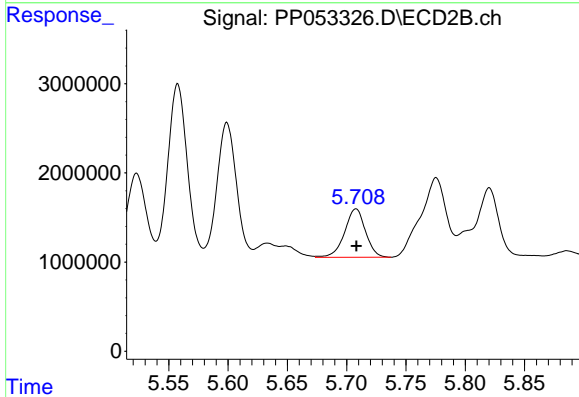
R.T.: 5.558 min
 Delta R.T.: -0.002 min
 Response: 22075793
 Conc: 243.53 ng/ml



#27 AR-1254-2

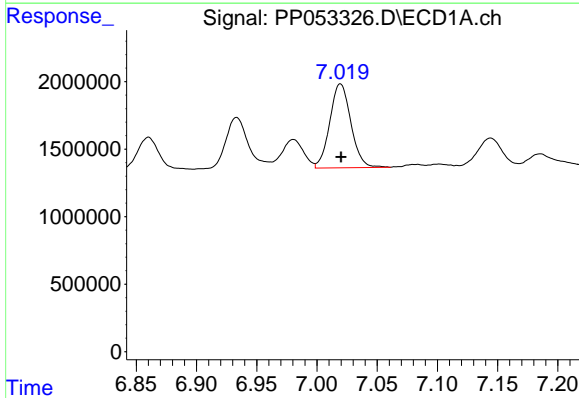
R.T.: 6.654 min
 Delta R.T.: 0.002 min
 Response: 15887839
 Conc: 151.24 ng/ml

Instrument :
 ECD_P
 ClientSampleId :



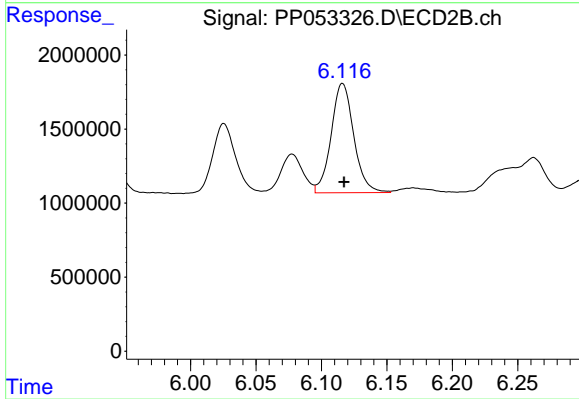
#27 AR-1254-2

R.T.: 5.708 min
 Delta R.T.: 0.000 min
 Response: 6701290
 Conc: 82.53 ng/ml



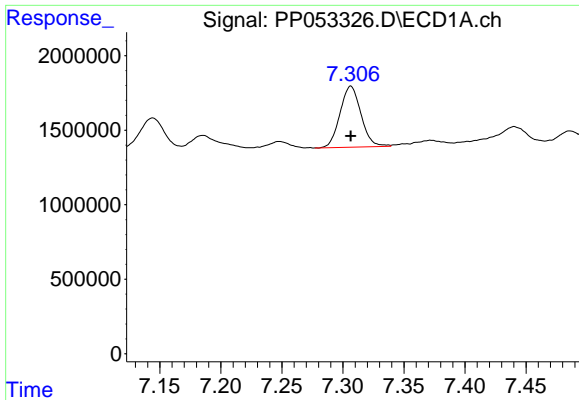
#28 AR-1254-3

R.T.: 7.019 min
 Delta R.T.: 0.000 min
 Response: 7587124
 Conc: 73.97 ng/ml



#28 AR-1254-3

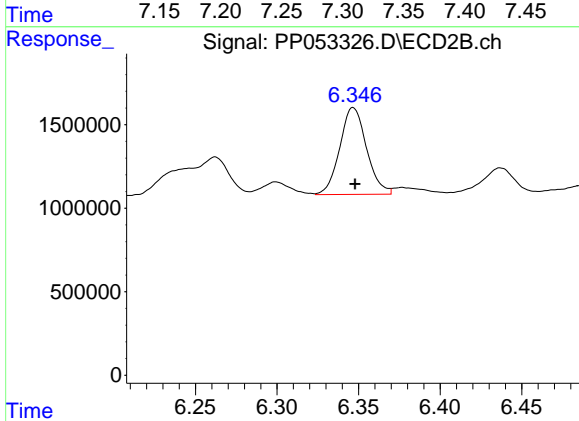
R.T.: 6.116 min
 Delta R.T.: -0.001 min
 Response: 8897577
 Conc: 70.00 ng/ml



#29 AR-1254-4

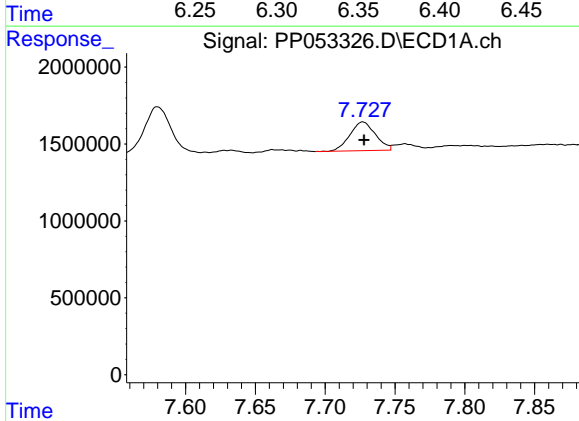
R.T.: 7.306 min
 Delta R.T.: 0.000 min
 Response: 4893572
 Conc: 70.34 ng/ml

Instrument :
 ECD_P
 ClientSampleId :



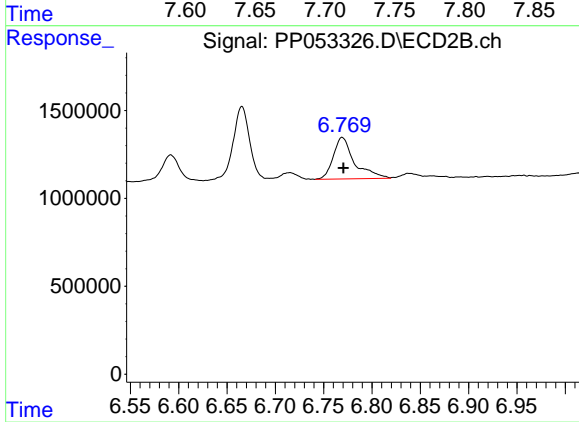
#29 AR-1254-4

R.T.: 6.347 min
 Delta R.T.: -0.001 min
 Response: 5954545
 Conc: 75.51 ng/ml



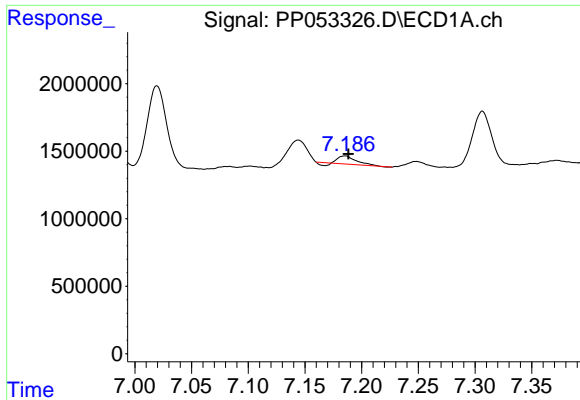
#30 AR-1254-5

R.T.: 7.727 min
 Delta R.T.: 0.000 min
 Response: 2380961
 Conc: 30.06 ng/ml



#30 AR-1254-5

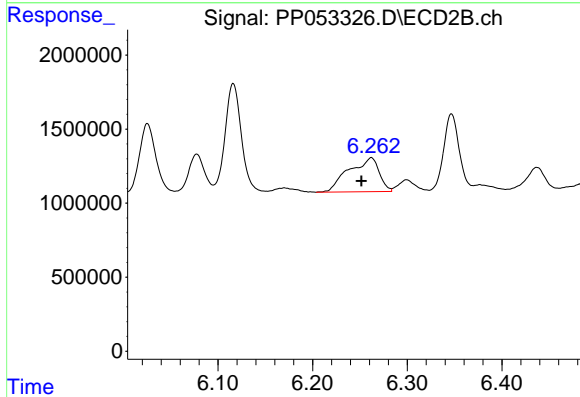
R.T.: 6.769 min
 Delta R.T.: -0.001 min
 Response: 3610397
 Conc: 28.58 ng/ml



#31 AR-1260-1

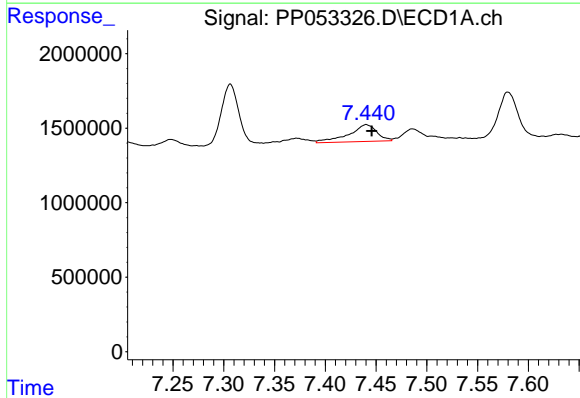
R.T.: 7.185 min
 Delta R.T.: -0.003 min
 Response: 585940
 Conc: 7.17 ng/ml

Instrument :
 ECD_P
 ClientSampleId :



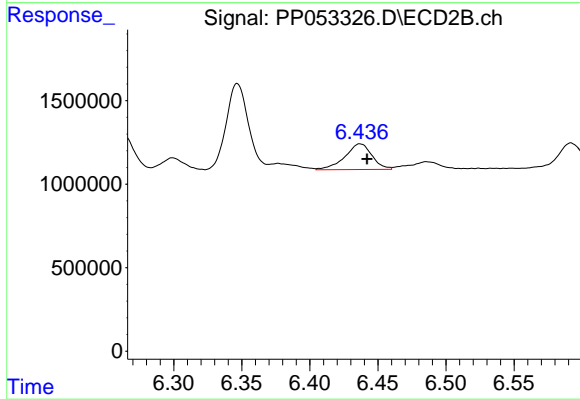
#31 AR-1260-1

R.T.: 6.262 min
 Delta R.T.: 0.010 min
 Response: 5121231
 Conc: 55.87 ng/ml



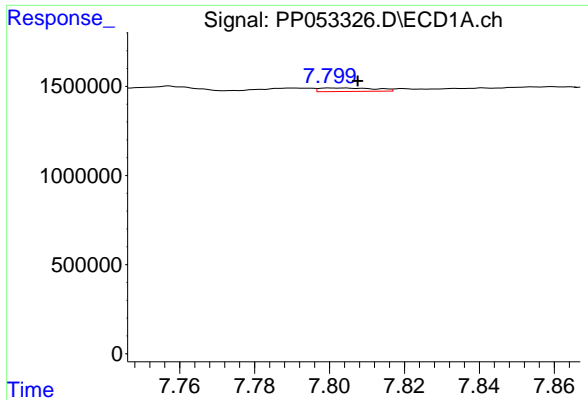
#32 AR-1260-2

R.T.: 7.440 min
 Delta R.T.: -0.005 min
 Response: 2178849
 Conc: 23.53 ng/ml



#32 AR-1260-2

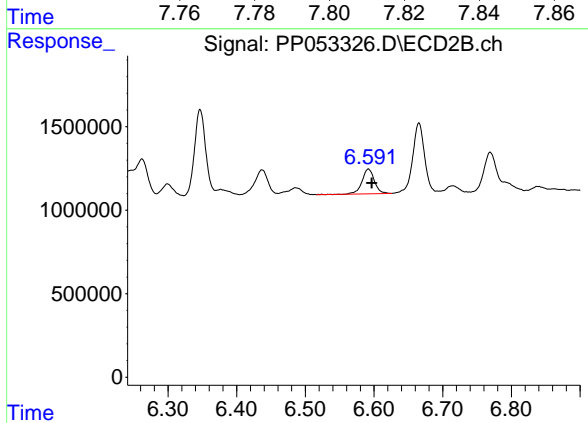
R.T.: 6.437 min
 Delta R.T.: -0.005 min
 Response: 2128433
 Conc: 18.50 ng/ml



#33 AR-1260-3

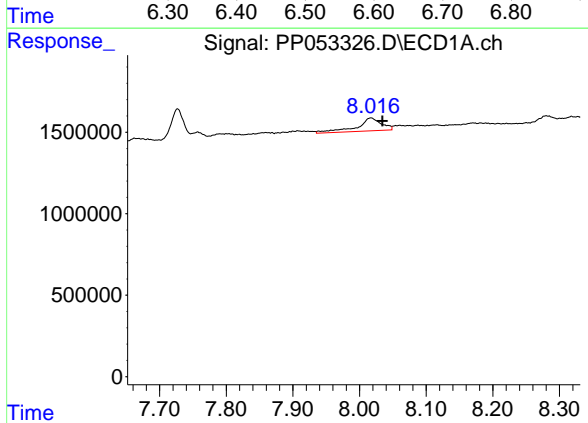
R.T.: 7.803 min
 Delta R.T.: -0.004 min
 Response: 209178
 Conc: 3.35 ng/ml

Instrument :
 ECD_P
 ClientSampleId :



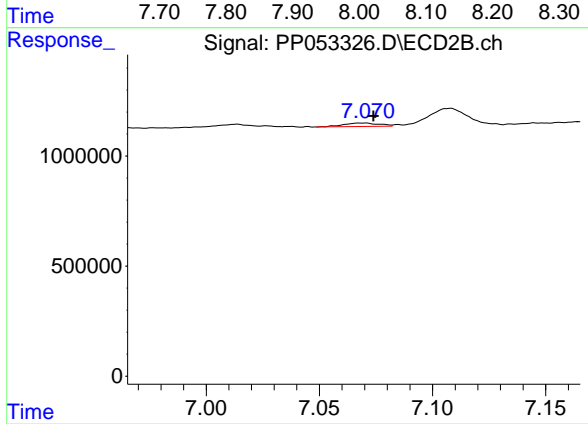
#33 AR-1260-3

R.T.: 6.592 min
 Delta R.T.: -0.005 min
 Response: 1874972
 Conc: 17.47 ng/ml



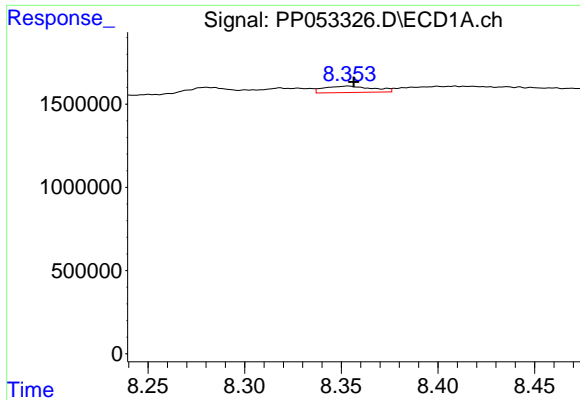
#34 AR-1260-4

R.T.: 8.017 min
 Delta R.T.: -0.017 min
 Response: 2018358
 Conc: 26.94 ng/ml



#34 AR-1260-4

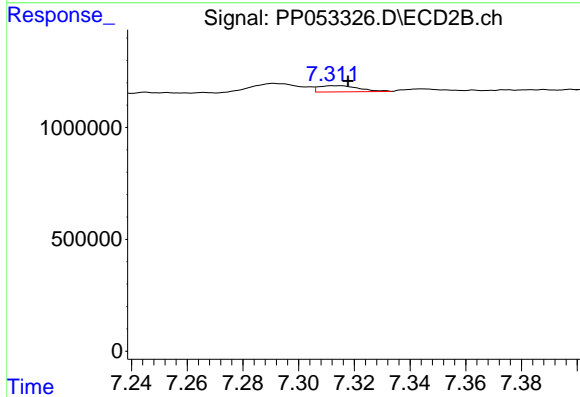
R.T.: 7.070 min
 Delta R.T.: -0.004 min
 Response: 173218
 Conc: 2.09 ng/ml



#35 AR-1260-5

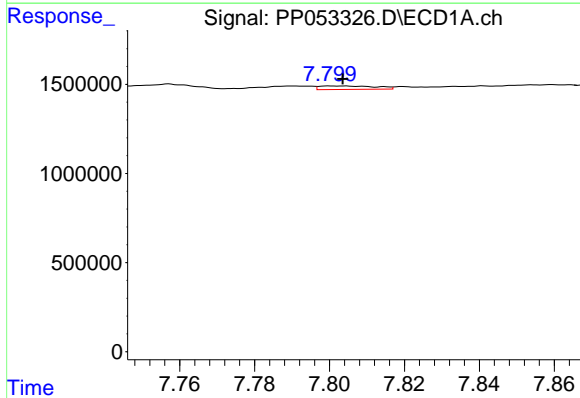
R.T.: 8.353 min
 Delta R.T.: -0.003 min
 Response: 683907
 Conc: 5.40 ng/ml

Instrument :
 ECD_P
 ClientSampleId :



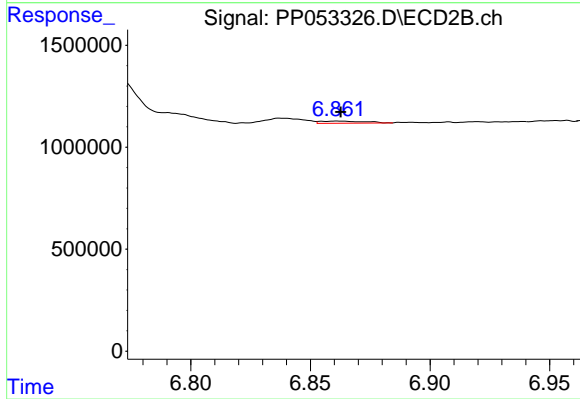
#35 AR-1260-5

R.T.: 7.314 min
 Delta R.T.: -0.004 min
 Response: 279126
 Conc: 1.47 ng/ml



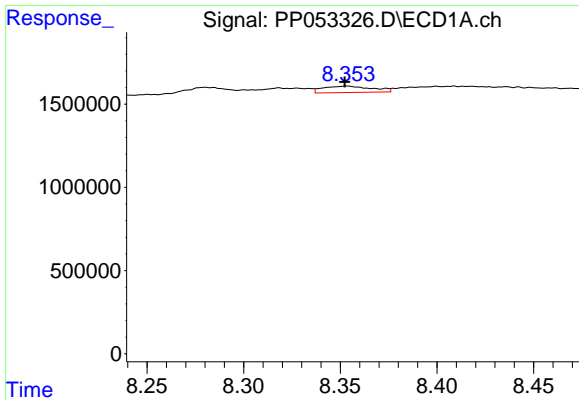
#36 AR-1262-1

R.T.: 7.803 min
 Delta R.T.: 0.000 min
 Response: 209178
 Conc: 2.18 ng/ml



#36 AR-1262-1

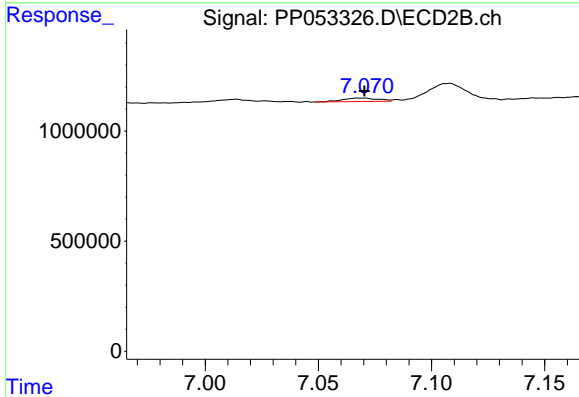
R.T.: 6.862 min
 Delta R.T.: 0.000 min
 Response: 136964
 Conc: 2.60 ng/ml



#37 AR-1262-2

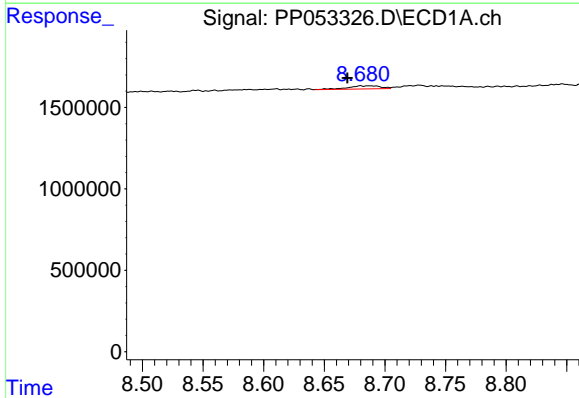
R.T.: 8.353 min
 Delta R.T.: 0.001 min
 Response: 683907
 Conc: 4.52 ng/ml

Instrument :
 ECD_P
 ClientSampleId :



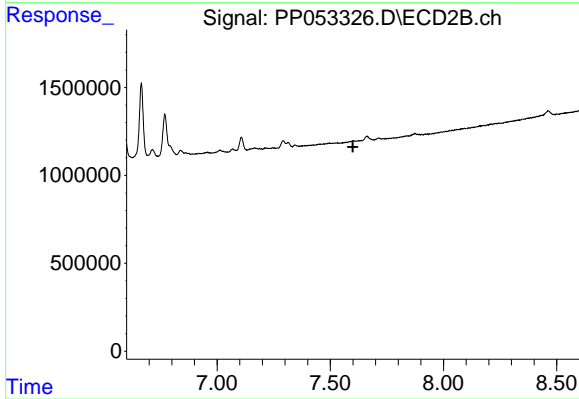
#37 AR-1262-2

R.T.: 7.070 min
 Delta R.T.: 0.000 min
 Response: 173218
 Conc: 1.49 ng/ml



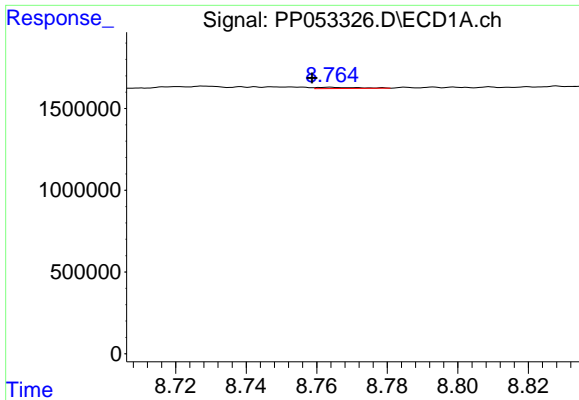
#38 AR-1262-3

R.T.: 8.680 min
 Delta R.T.: 0.011 min
 Response: 367380
 Conc: 3.55 ng/ml



#38 AR-1262-3

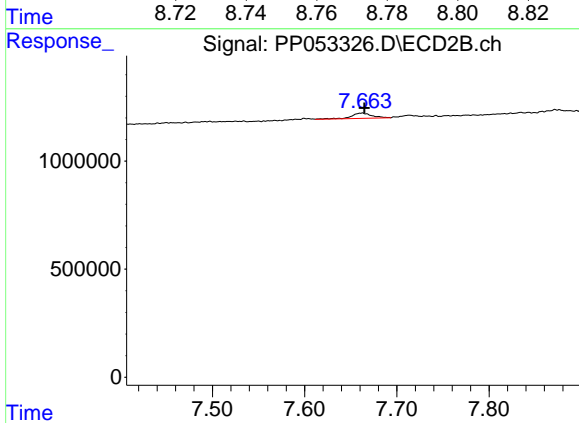
R.T.: 7.600 min
 Delta R.T.: 0.000 min
 Response: -57647
 Conc: N.D.



#39 AR-1262-4

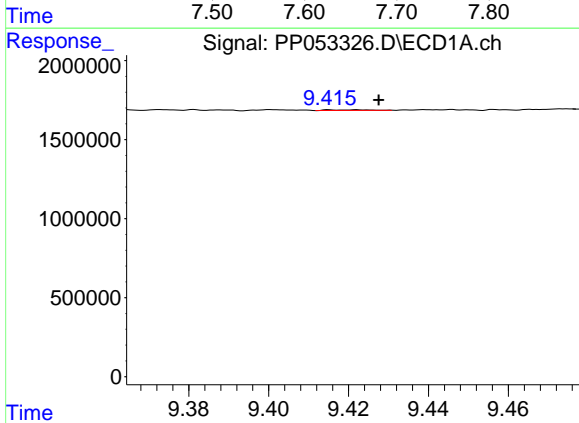
R.T.: 8.764 min
 Delta R.T.: 0.005 min
 Response: 62249
 Conc: 0.77 ng/ml

Instrument :
 ECD_P
 ClientSampleId :



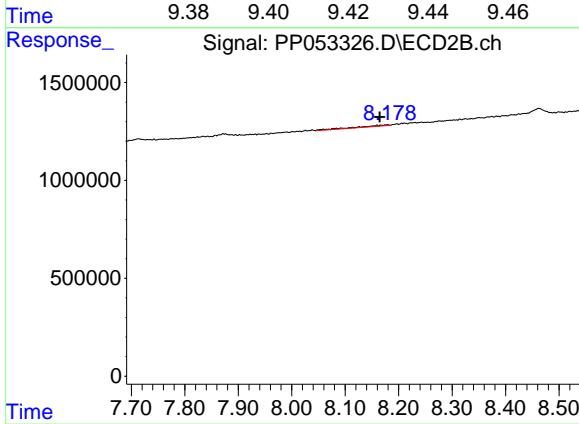
#39 AR-1262-4

R.T.: 7.662 min
 Delta R.T.: -0.003 min
 Response: 388907
 Conc: 2.37 ng/ml



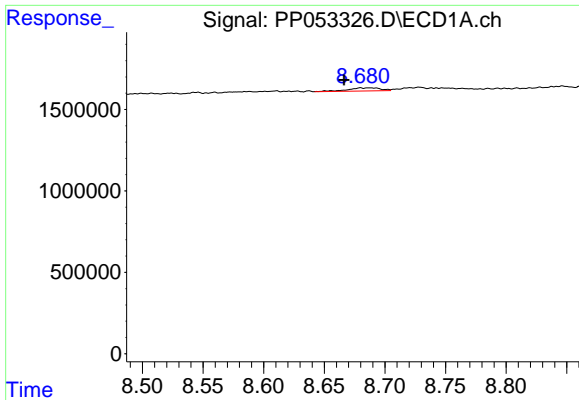
#40 AR-1262-5

R.T.: 9.422 min
 Delta R.T.: -0.005 min
 Response: 27823
 Conc: 0.55 ng/ml



#40 AR-1262-5

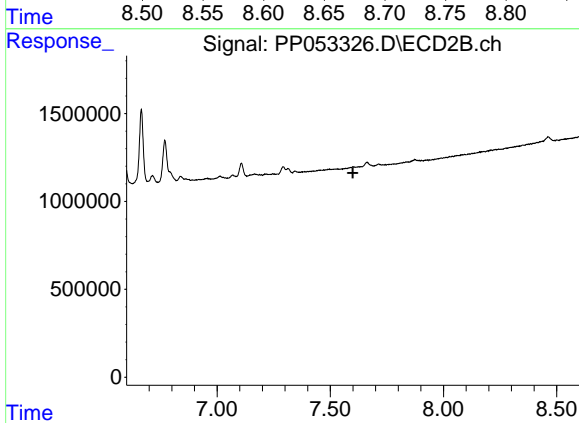
R.T.: 8.179 min
 Delta R.T.: 0.014 min
 Response: 255849
 Conc: 3.37 ng/ml



#41 AR-1268-1

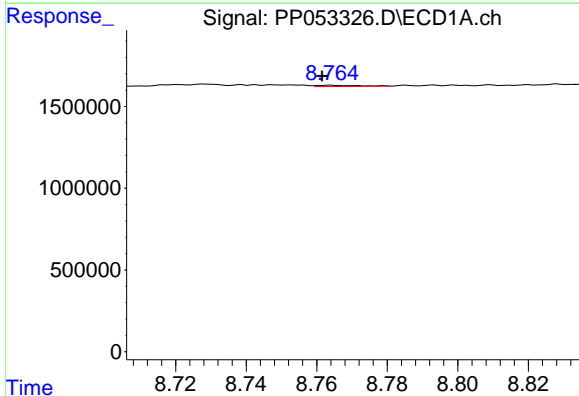
R.T.: 8.680 min
 Delta R.T.: 0.014 min
 Response: 367380
 Conc: 1.94 ng/ml

Instrument :
 ECD_P
 ClientSampleId :



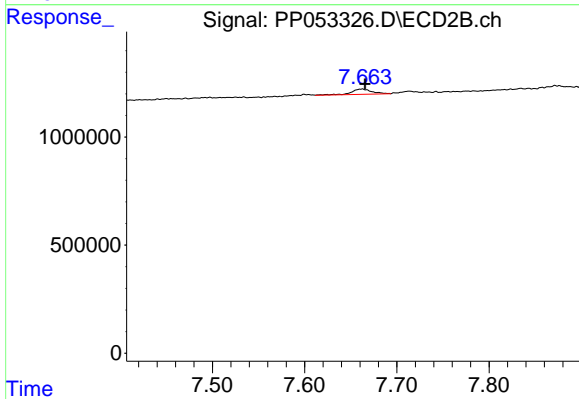
#41 AR-1268-1

R.T.: 7.600 min
 Delta R.T.: 0.000 min
 Response: -57647
 Conc: N.D.



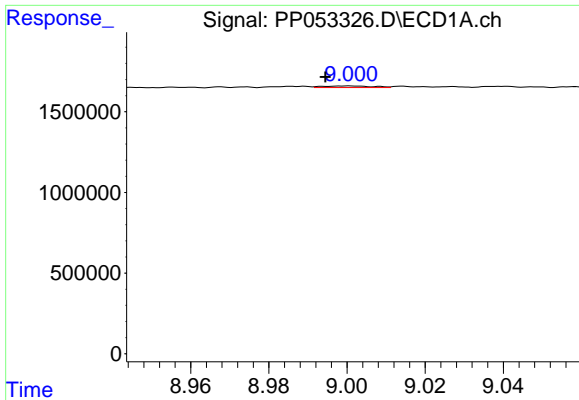
#42 AR-1268-2

R.T.: 8.764 min
 Delta R.T.: 0.002 min
 Response: 62249
 Conc: 0.37 ng/ml



#42 AR-1268-2

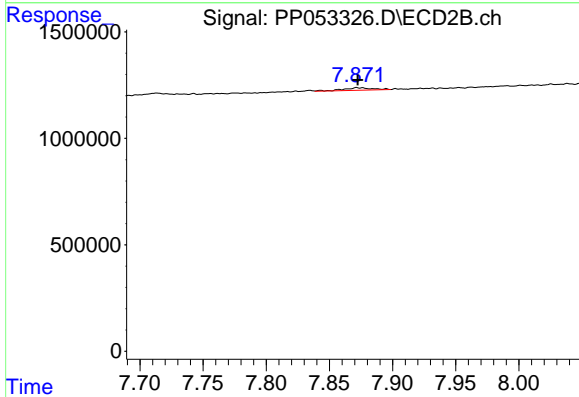
R.T.: 7.662 min
 Delta R.T.: -0.003 min
 Response: 388907
 Conc: 1.63 ng/ml



#43 AR-1268-3

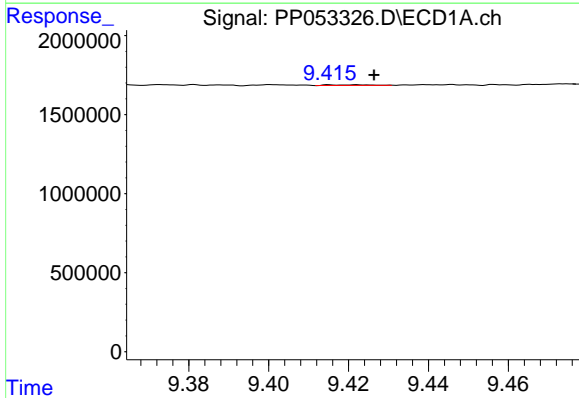
R.T.: 9.001 min
 Delta R.T.: 0.006 min
 Response: 87884
 Conc: 0.59 ng/ml

Instrument :
 ECD_P
 ClientSampleId :



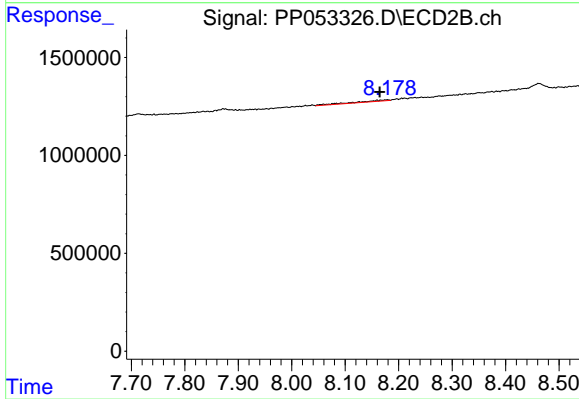
#43 AR-1268-3

R.T.: 7.872 min
 Delta R.T.: 0.000 min
 Response: 190900
 Conc: 0.93 ng/ml



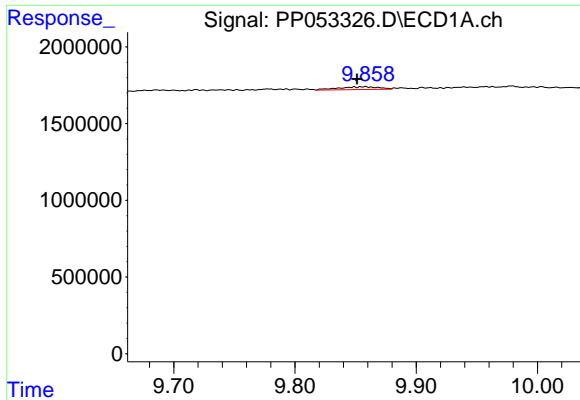
#44 AR-1268-4

R.T.: 9.422 min
 Delta R.T.: -0.004 min
 Response: 27823
 Conc: 0.50 ng/ml



#44 AR-1268-4

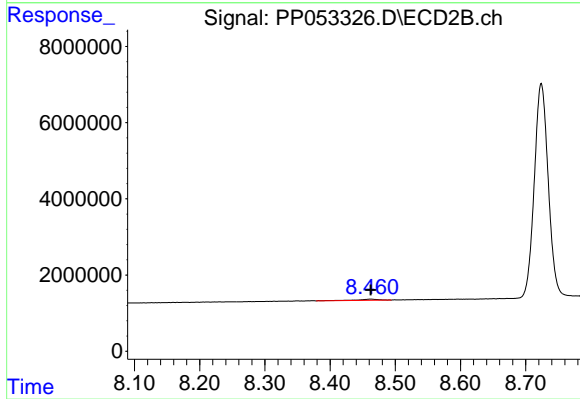
R.T.: 8.179 min
 Delta R.T.: 0.014 min
 Response: 255849
 Conc: 3.11 ng/ml



#45 AR-1268-5

R.T.: 9.858 min
Delta R.T.: 0.007 min
Response: 423517
Conc: 0.92 ng/ml

Instrument :
ECD_P
ClientSampleId :



#45 AR-1268-5

R.T.: 8.462 min
Delta R.T.: 0.000 min
Response: 753846
Conc: 1.14 ng/ml