

Data Path : Z:\pestpcbsrv\HPCHEM1\ECD_P\Data\PP111523\
 Data File : PP061666.D
 Signal(s) : Signal #1: ECD1A.ch Signal #2: ECD2B.ch
 Acq On : 15 Nov 2023 10:30
 Operator : YP\AJ
 Sample : I.BLK
 Misc :
 ALS Vial : 2 Sample Multiplier: 1

Instrument :
 ECD_P
 ClientSampleId :
 I.BLK

Integration File signal 1: autoint1.e
 Integration File signal 2: autoint2.e
 Quant Time: Nov 16 04:04:57 2023
 Quant Method : Z:\pestpcbsrv\HPCHEM1\ECD_P\methods\PP111523.M
 Quant Title : GC EXTRACTABLES
 QLast Update : Thu Nov 16 04:03:35 2023
 Response via : Initial Calibration
 Integrator: ChemStation

Volume Inj. : 2 µl
 Signal #1 Phase : ZB-MR1 Signal #2 Phase: ZB-MR2
 Signal #1 Info : 30Mx0.32mmx 0.50µ Signal #2 Info : 30M x 0.32mm x 0.25µm

Compound	RT#1	RT#2	Resp#1	Resp#2	ng/ml	ng/ml

System Monitoring Compounds						
1) SA Tetrachlo...	4.450	3.728	27034290	44471001	20.515	21.138
2) SA Decachlor...	10.237	8.860	23327821	37236122	23.107	22.814

Target Compounds

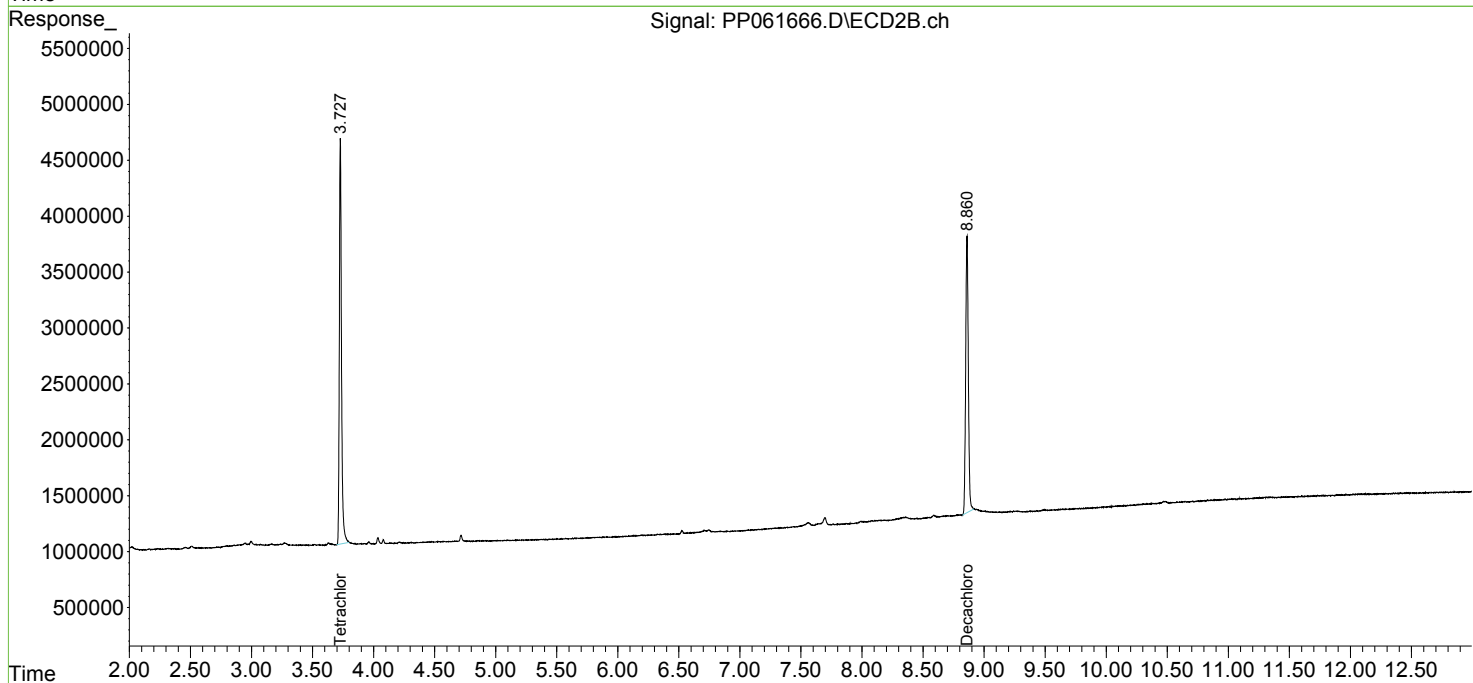
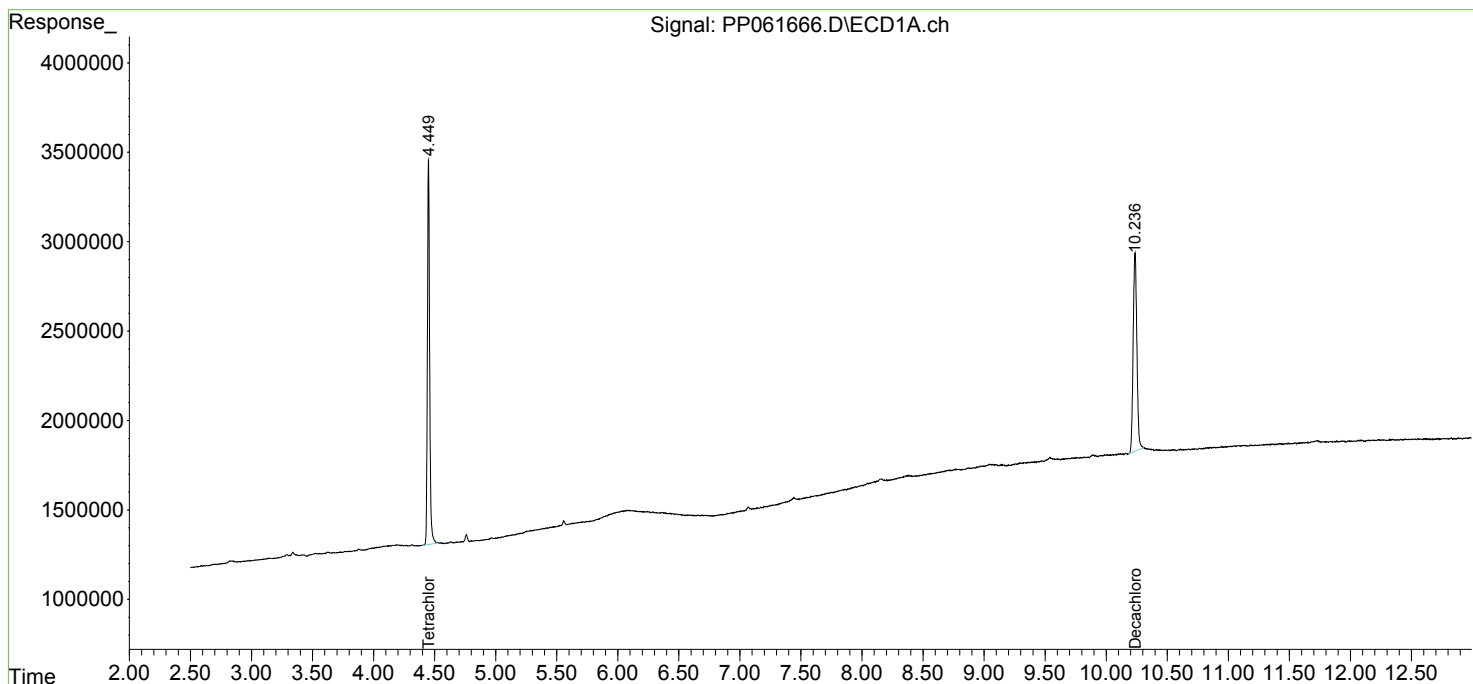
 (f)=RT Delta > 1/2 Window (#)=Amounts differ by > 25% (m)=manual int.

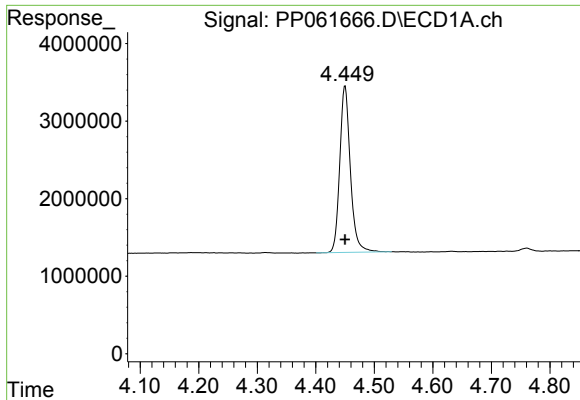
Data Path : Z:\pestpcbsrv\HPCHEM1\ECD_P\Data\PP111523\
 Data File : PP061666.D
 Signal(s) : Signal #1: ECD1A.ch Signal #2: ECD2B.ch
 Acq On : 15 Nov 2023 10:30
 Operator : YP\AJ
 Sample : I.BLK
 Misc :
 ALS Vial : 2 Sample Multiplier: 1

Instrument :
 ECD_P
 ClientSampleId :
 I.BLK

Integration File signal 1: autoint1.e
 Integration File signal 2: autoint2.e
 Quant Time: Nov 16 04:04:57 2023
 Quant Method : Z:\pestpcbsrv\HPCHEM1\ECD_P\methods\PP111523.M
 Quant Title : GC EXTRACTABLES
 QLast Update : Thu Nov 16 04:03:35 2023
 Response via : Initial Calibration
 Integrator: ChemStation

Volume Inj. : 2 µl
 Signal #1 Phase : ZB-MR1 Signal #2 Phase: ZB-MR2
 Signal #1 Info : 30Mx0.32mmx 0.50µ Signal #2 Info : 30M x 0.32mm x 0.25µm

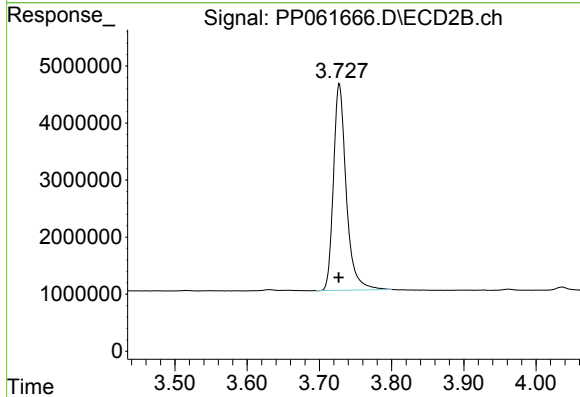




#1 Tetrachloro-m-xylene

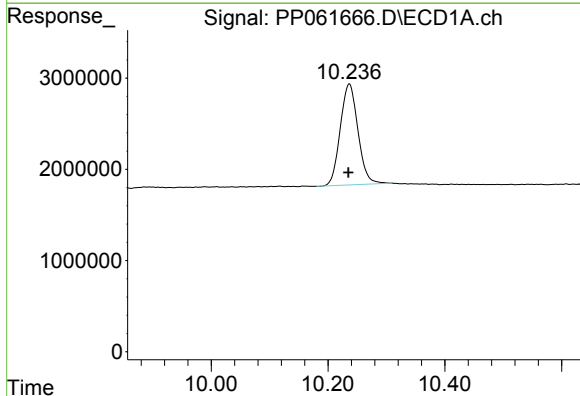
R.T.: 4.450 min
 Delta R.T.: 0.000 min
 Response: 27034290
 Conc: 20.51 ng/ml

Instrument :
 ECD_P
 ClientSampleId :
 I.BLK



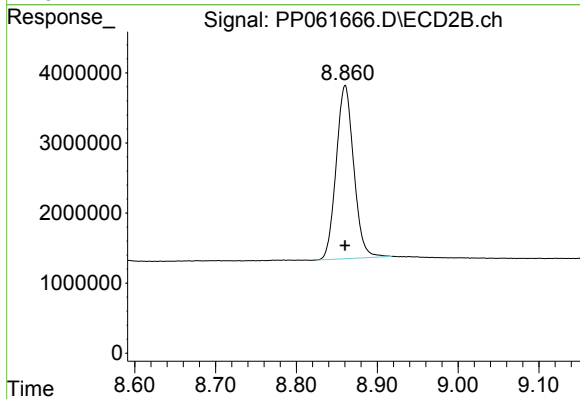
#1 Tetrachloro-m-xylene

R.T.: 3.728 min
 Delta R.T.: 0.000 min
 Response: 44471001
 Conc: 21.14 ng/ml



#2 Decachlorobiphenyl

R.T.: 10.237 min
 Delta R.T.: 0.002 min
 Response: 23327821
 Conc: 23.11 ng/ml



#2 Decachlorobiphenyl

R.T.: 8.860 min
 Delta R.T.: 0.000 min
 Response: 37236122
 Conc: 22.81 ng/ml