

Data Path : Z:\pestpcbsrv\HPCHEM1\ECD_P\Data\PP111722\
 Data File : PP053349.D
 Signal(s) : Signal #1: ECD1A.ch Signal #2: ECD2B.ch
 Acq On : 17 Nov 2022 10:09
 Operator : YP\AJ
 Sample : AR1248CCC500
 Misc :
 ALS Vial : 5 Sample Multiplier: 1

Instrument :
 ECD_P
 ClientSampleId :
 AR1248CCC500

Integration File signal 1: autoint1.e
 Integration File signal 2: autoint2.e
 Quant Time: Nov 17 14:39:17 2022
 Quant Method : Z:\pestpcbsrv\HPCHEM1\ECD_P\methods\PP110822.M
 Quant Title : GC EXTRACTABLES
 QLast Update : Wed Nov 09 05:50:05 2022
 Response via : Initial Calibration
 Integrator: ChemStation

Volume Inj. : 2 µl
 Signal #1 Phase : ZB-MR1 Signal #2 Phase: ZB-MR2
 Signal #1 Info : 30Mx0.32mmx 0.50µ Signal #2 Info : 30M x 0.32mm x 0.25µm

Compound	RT#1	RT#2	Resp#1	Resp#2	ng/ml	ng/ml

System Monitoring Compounds						
1) SA Tetrachlo...	4.401	3.646	98173528	86421640	51.070	57.452
2) SA Decachlor...	10.209	8.729	75201862	91930182	55.461	49.046
Target Compounds						
21) L5 AR-1248-1	5.575	4.745	18701472	18337939	501.416	534.851
22) L5 AR-1248-2	5.851	4.985	26954429	25152525	492.654	523.768
23) L5 AR-1248-3	6.056	5.028	29573514	26027651	496.294	525.254
24) L5 AR-1248-4	6.462	5.202	30913346	31085110	501.059	526.341
25) L5 AR-1248-5	6.501	5.600	30361990	28965278	503.333	526.507

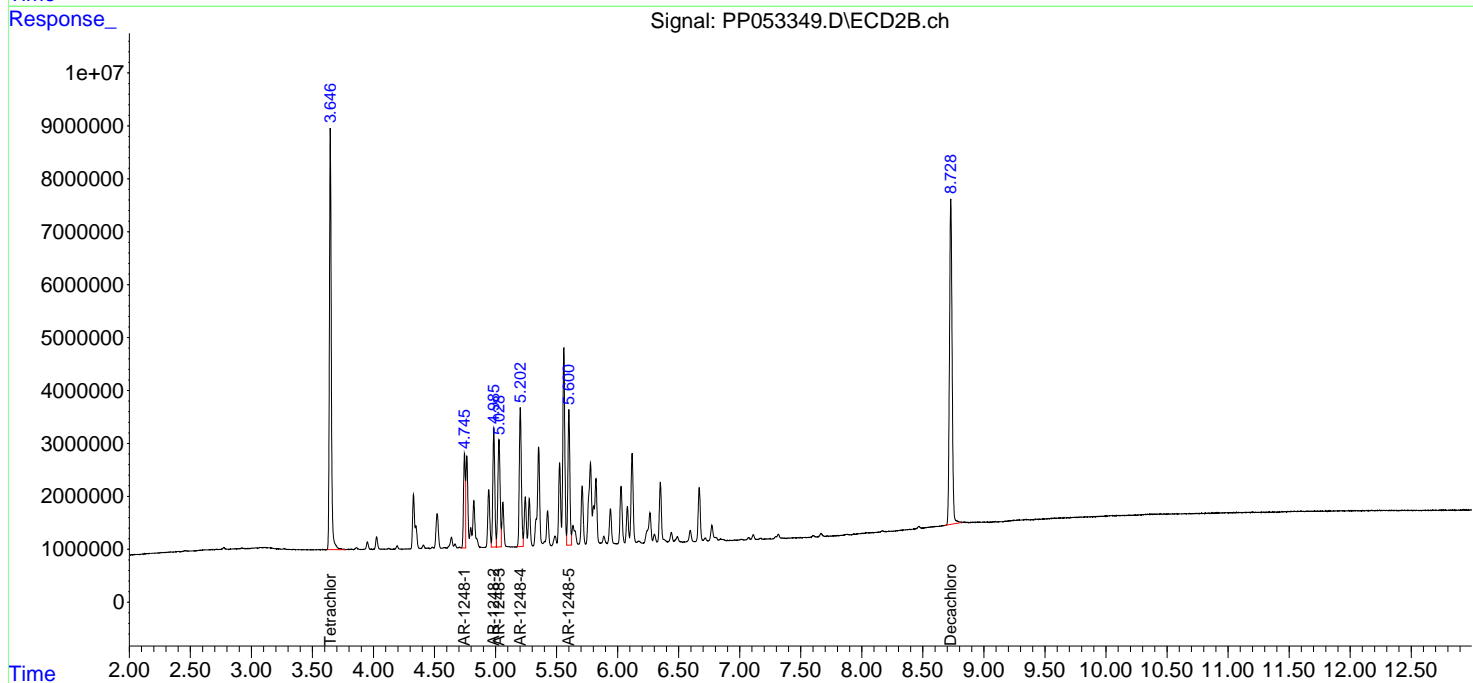
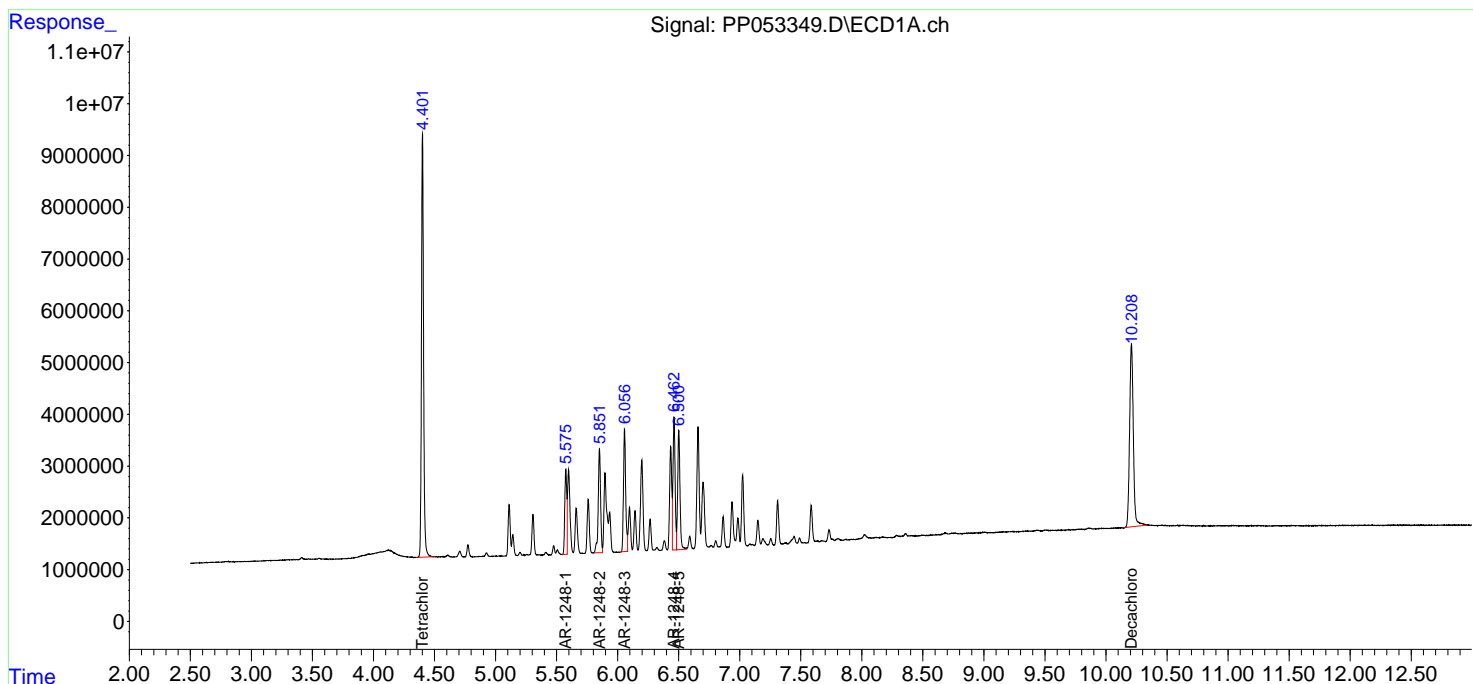
(f)=RT Delta > 1/2 Window (#)=Amounts differ by > 25% (m)=manual int.

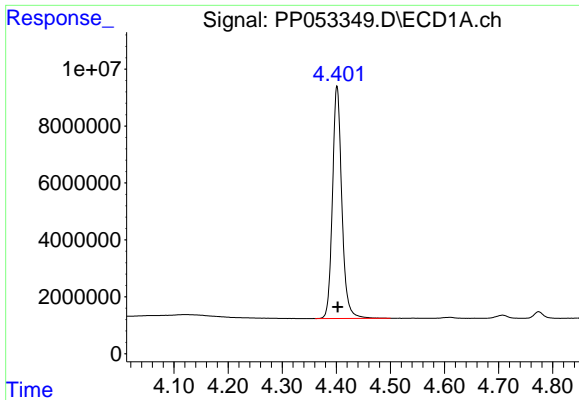
Data Path : Z:\pestpcbsrv\HPCHEM1\ECD_P\Data\PP111722\
Data File : PP053349.D
Signal(s) : Signal #1: ECD1A.ch Signal #2: ECD2B.ch
Acq On : 17 Nov 2022 10:09
Operator : YP\AJ
Sample : AR1248CCC500
Misc :
ALS Vial : 5 Sample Multiplier: 1

Instrument :
ECD_P
ClientSampleId :
AR1248CCC500

Integration File signal 1: autoint1.e
Integration File signal 2: autoint2.e
Quant Time: Nov 17 14:39:17 2022
Quant Method : Z:\pestpcbsrv\HPCHEM1\ECD_P\methods\PP110822.M
Quant Title : GC EXTRACTABLES
QLast Update : Wed Nov 09 05:50:05 2022
Response via : Initial Calibration
Integrator: ChemStation

Volume Inj. : 2 µl
Signal #1 Phase : ZB-MR1 Signal #2 Phase: ZB-MR2
Signal #1 Info : 30Mx0.32mmx 0.50µ Signal #2 Info : 30M x 0.32mm x 0.25µm

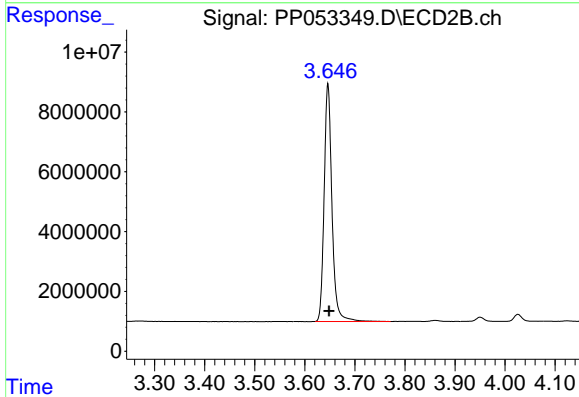




#1 Tetrachloro-m-xylene

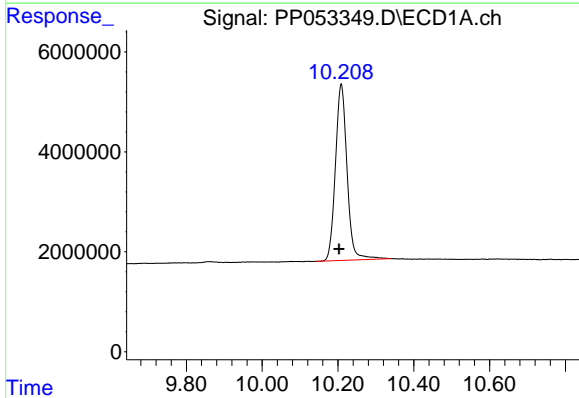
R.T.: 4.401 min
 Delta R.T.: -0.002 min
 Response: 98173528
 Conc: 51.07 ng/ml

Instrument :
 ECD_P
 ClientSampleId :
 AR1248CCC500



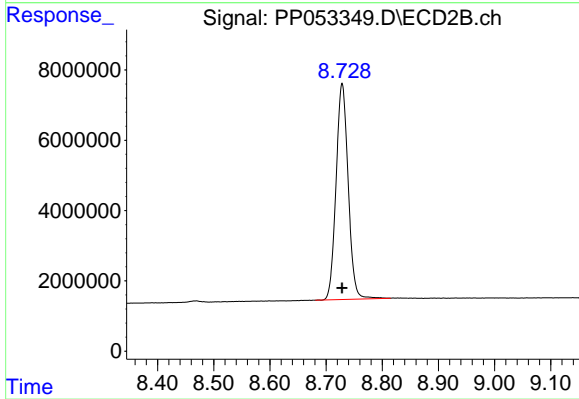
#1 Tetrachloro-m-xylene

R.T.: 3.646 min
 Delta R.T.: -0.003 min
 Response: 86421640
 Conc: 57.45 ng/ml



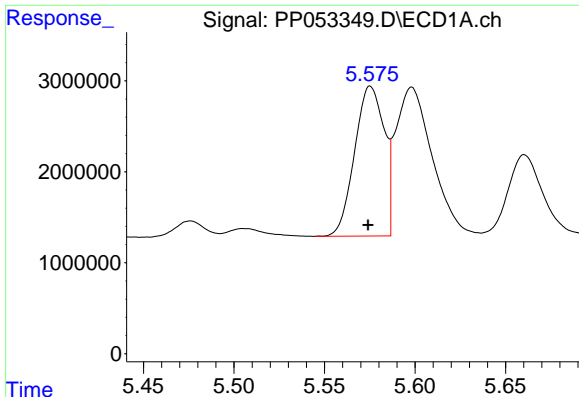
#2 Decachlorobiphenyl

R.T.: 10.209 min
 Delta R.T.: 0.006 min
 Response: 75201862
 Conc: 55.46 ng/ml



#2 Decachlorobiphenyl

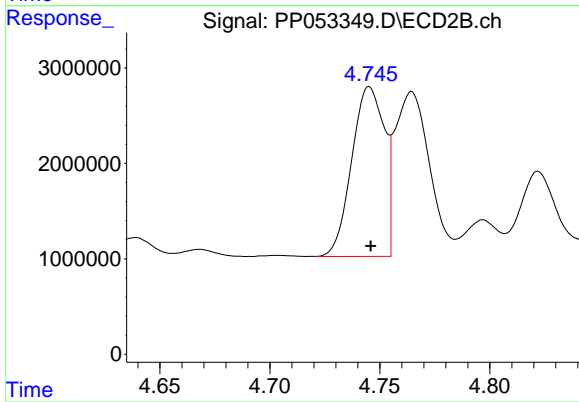
R.T.: 8.729 min
 Delta R.T.: 0.000 min
 Response: 91930182
 Conc: 49.05 ng/ml



#21 AR-1248-1

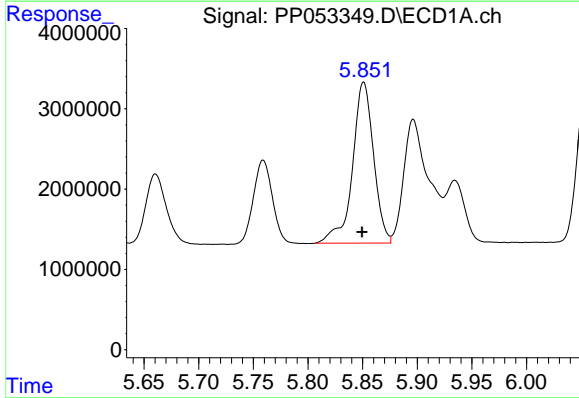
R.T.: 5.575 min
 Delta R.T.: 0.001 min
 Response: 18701472
 Conc: 501.42 ng/ml

Instrument :
 ECD_P
 ClientSampleId :
 AR1248CCC500



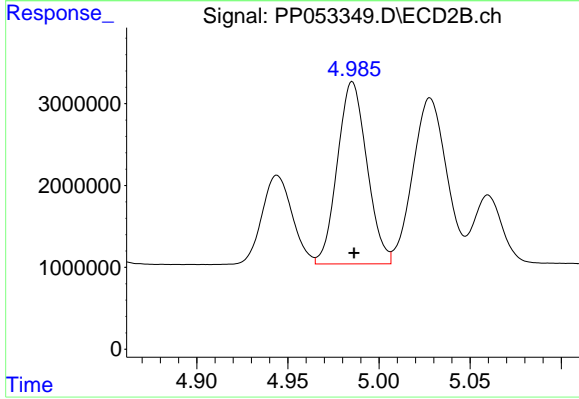
#21 AR-1248-1

R.T.: 4.745 min
 Delta R.T.: 0.000 min
 Response: 18337939
 Conc: 534.85 ng/ml



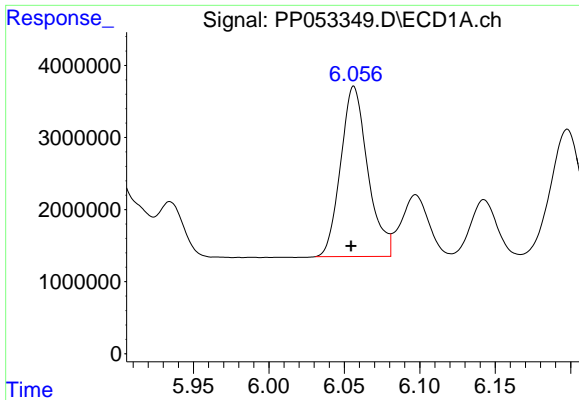
#22 AR-1248-2

R.T.: 5.851 min
 Delta R.T.: 0.002 min
 Response: 26954429
 Conc: 492.65 ng/ml



#22 AR-1248-2

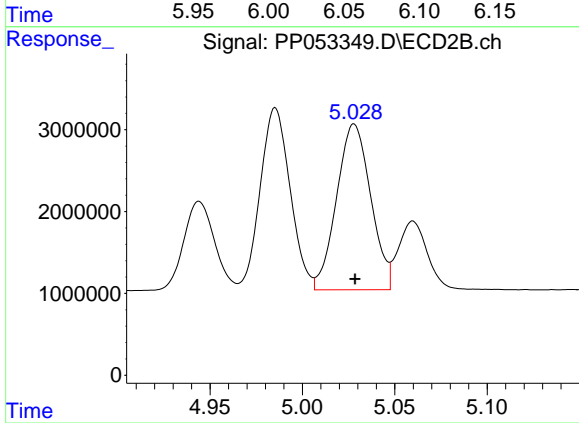
R.T.: 4.985 min
 Delta R.T.: 0.000 min
 Response: 25152525
 Conc: 523.77 ng/ml



#23 AR-1248-3

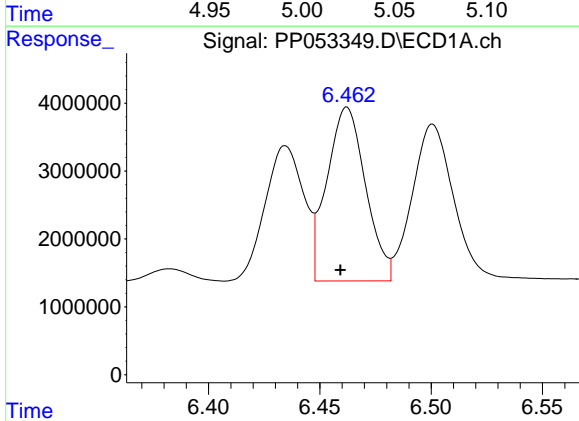
R.T.: 6.056 min
Delta R.T.: 0.002 min
Response: 29573514
Conc: 496.29 ng/ml

Instrument :
ECD_P
ClientSampleId :
AR1248CCC500



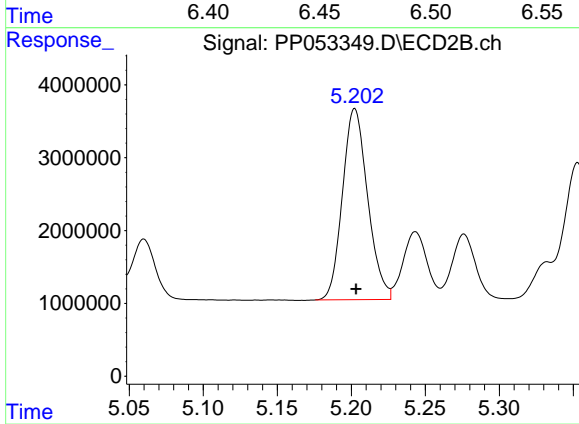
#23 AR-1248-3

R.T.: 5.028 min
Delta R.T.: 0.000 min
Response: 26027651
Conc: 525.25 ng/ml



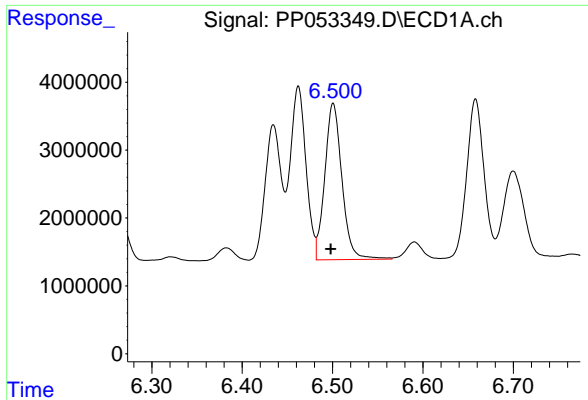
#24 AR-1248-4

R.T.: 6.462 min
Delta R.T.: 0.003 min
Response: 30913346
Conc: 501.06 ng/ml



#24 AR-1248-4

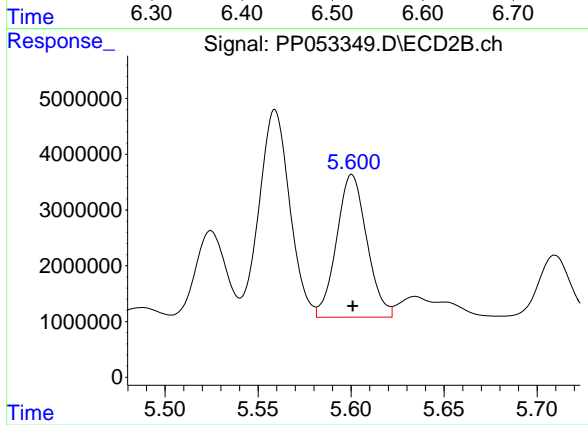
R.T.: 5.202 min
Delta R.T.: 0.000 min
Response: 31085110
Conc: 526.34 ng/ml



#25 AR-1248-5

R.T.: 6.501 min
Delta R.T.: 0.003 min
Response: 30361990
Conc: 503.33 ng/ml

Instrument :
ECD_P
ClientSampleId :
AR1248CCC500



#25 AR-1248-5

R.T.: 5.600 min
Delta R.T.: 0.000 min
Response: 28965278
Conc: 526.51 ng/ml