

Data Path : Z:\pestpcbsrv\HPCHEM1\ECD_P\Data\PP111824\
 Data File : PP068578.D
 Signal(s) : Signal #1: ECD1A.ch Signal #2: ECD2B.ch
 Acq On : 19 Nov 2024 04:08
 Operator : YP\AJ
 Sample : P4865-05 10X
 Misc :
 ALS Vial : 41 Sample Multiplier: 1

Instrument :
 ECD_P
 ClientSampleId :
 D3690

Integration File signal 1: autoint1.e
 Integration File signal 2: autoint2.e
 Quant Time: Nov 19 06:11:00 2024
 Quant Method : Z:\pestpcbsrv\HPCHEM1\ECD_P\methods\PP110724.M
 Quant Title : GC EXTRACTABLES
 QLast Update : Fri Nov 08 11:04:08 2024
 Response via : Initial Calibration
 Integrator: ChemStation

Volume Inj. : 2 µl
 Signal #1 Phase : ZB-MR1 Signal #2 Phase: ZB-MR2
 Signal #1 Info : 30Mx0.32mmx 0.50µ Signal #2 Info : 30M x 0.32mm x 0.25µm

Compound	RT#1	RT#2	Resp#1	Resp#2	ng/ml	ng/ml
System Monitoring Compounds						
1) SA Tetrachlo...	4.757	4.049	569904	601003	0.587	0.621
2) SA Decachlor...	10.673	9.207	729243	378060	0.583	0.334 #
Target Compounds						
3) L1 AR-1016-1	5.852f	5.181	2102717	448708	58.513	13.578 #
4) L1 AR-1016-2	0.000	5.181	0	448708	N.D.	9.600 #
5) L1 AR-1016-3	0.000	5.355	0	400278	N.D.	14.803 #
6) L1 AR-1016-4	0.000	5.396	0	512764	N.D.	21.732 #
7) L1 AR-1016-5	0.000	5.678f	0	253787	N.D.	8.562 #
8) L2 AR-1221-1	5.019f	4.254	249438	116820	18.392	9.264 #
9) L2 AR-1221-2	5.019	4.352	249438	171424	24.732	17.541 #
10) L2 AR-1221-3	5.097	4.480f	1084368	647616	35.835	21.240 #
11) L3 AR-1232-1	5.097	4.480f	1084368	647616	46.500	27.439 #
12) L3 AR-1232-2	0.000	5.181	0	448708	N.D.	20.597 #
13) L3 AR-1232-3	0.000	5.355	0	400278	N.D.	35.705 #
14) L3 AR-1232-4	0.000	5.434	0	103653	N.D.	9.460 #
15) L3 AR-1232-5	6.199	5.678f	338642	253787	34.052	20.600 #
16) L4 AR-1242-1	0.000	5.181	0	448708	N.D.	16.147 #
17) L4 AR-1242-2	0.000	5.181	0	448708	N.D.	11.617 #
18) L4 AR-1242-3	0.000	5.355	0	400278	N.D.	18.810 #
19) L4 AR-1242-4	0.000	5.434	0	103653	N.D.	4.547 #
20) L4 AR-1242-5	6.781f	5.971	797280	864398	32.836	31.488
21) L5 AR-1248-1	5.852f	5.181	2102717	448708	93.187	20.538 #
22) L5 AR-1248-2	6.199	5.396	338642	512764	10.075	16.039 #
23) L5 AR-1248-3	0.000	5.434	0	103653	N.D.	3.093 #
24) L5 AR-1248-4	6.781	5.678f	797280	253787	18.634	6.536 #
25) L5 AR-1248-5	6.781f	6.007	797280	137452	19.193	3.708 #
26) L6 AR-1254-1	6.781	5.971	797280	864398	15.366	14.254
27) L6 AR-1254-2	6.996	6.117	1174082	1068992	17.206	20.271
28) L6 AR-1254-3	7.361	6.541	834343	2269635	11.676	27.259 #
29) L6 AR-1254-4	7.648	6.755	1622297	215273	30.146	4.427 #
30) L6 AR-1254-5	8.061	7.176	3724020	3005917	59.426	40.276 #
31) L7 AR-1260-1	7.526	6.657	2301712	2418640	42.542	43.462
32) L7 AR-1260-2	7.780	6.844	3196928	3562111	50.258	53.779
33) L7 AR-1260-3	8.142	7.001	1787334	2528888	33.227	40.860
34) L7 AR-1260-4	8.379	7.476	2647209	1897515	42.540	35.981
35) L7 AR-1260-5	8.717	7.714	4424165	4491969	39.088	37.724
36) L8 AR-1262-1	8.379	7.214	2647209	2125088	35.709	27.386
37) L8 AR-1262-2	8.717	7.476	4424165	1897515	34.296	26.841
38) L8 AR-1262-3	9.064	8.001	3040359	716771	31.776	12.180 #
39) L8 AR-1262-4	9.133	8.064	1704399	3078343	22.313	29.713 #
40) L8 AR-1262-5	9.851	8.592	1051945	1035544	19.669	20.428
41) L9 AR-1268-1	9.064	8.001	3040359	716771	19.705	4.603 #

Data Path : Z:\pestpcbsrv\HPCHEM1\ECD_P\Data\PP111824\
 Data File : PP068578.D
 Signal(s) : Signal #1: ECD1A.ch Signal #2: ECD2B.ch
 Acq On : 19 Nov 2024 04:08
 Operator : YP\AJ
 Sample : P4865-05 10X
 Misc :
 ALS Vial : 41 Sample Multiplier: 1

Instrument :
 ECD_P
 ClientSampleId :
 D3690

Integration File signal 1: autoint1.e
 Integration File signal 2: autoint2.e
 Quant Time: Nov 19 06:11:00 2024
 Quant Method : Z:\pestpcbsrv\HPCHEM1\ECD_P\methods\PP110724.M
 Quant Title : GC EXTRACTABLES
 QLast Update : Fri Nov 08 11:04:08 2024
 Response via : Initial Calibration
 Integrator: ChemStation

Volume Inj. : 2 µl
 Signal #1 Phase : ZB-MR1 Signal #2 Phase: ZB-MR2
 Signal #1 Info : 30Mx0.32mmx 0.50µ Signal #2 Info : 30M x 0.32mm x 0.25µm

	Compound	RT#1	RT#2	Resp#1	Resp#2	ng/ml	ng/ml
42)	L9 AR-1268-2	9.133	8.064	1704399	3078343	12.175	21.746 #
43)	L9 AR-1268-3	0.000	8.322f	0	224114	N.D.	1.800 #
44)	L9 AR-1268-4	9.851	8.592	1051945	1035544	19.686	18.964
45)	L9 AR-1268-5	10.304	8.917	180792	235352	0.455	0.625 #

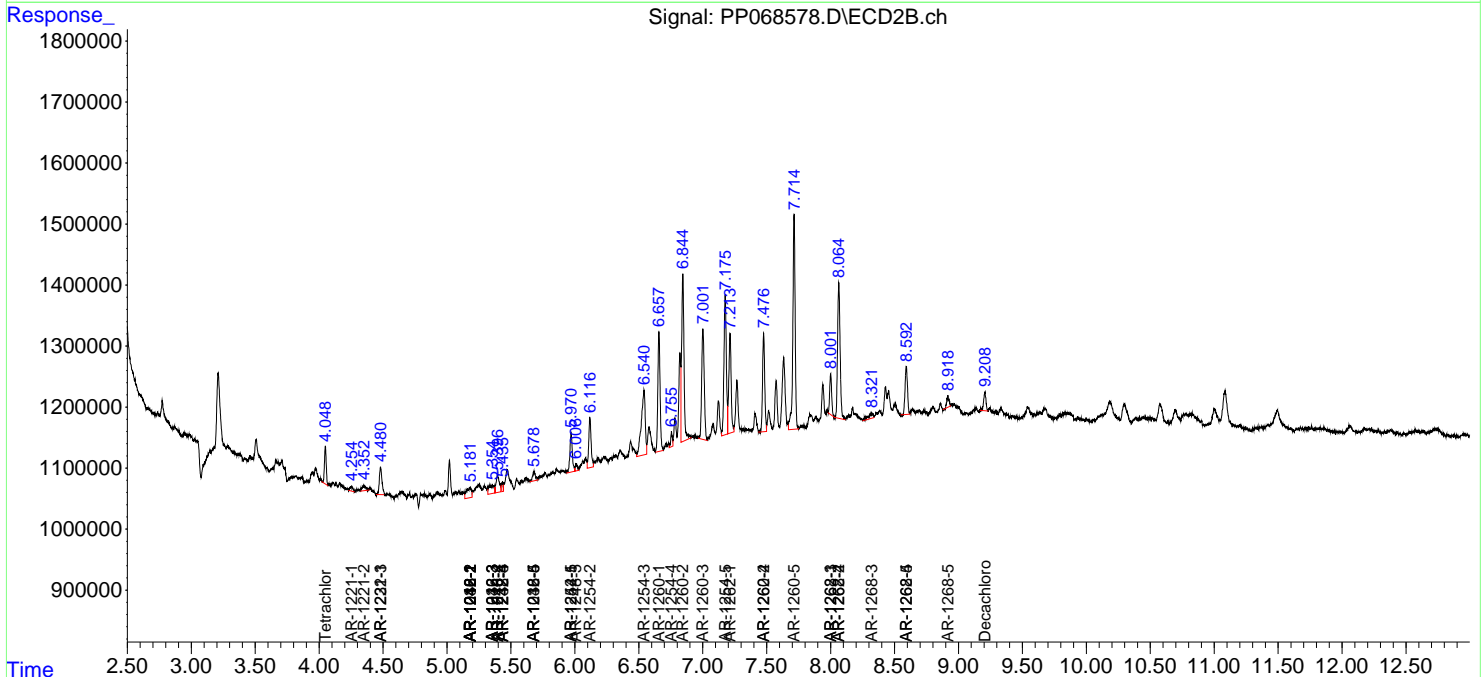
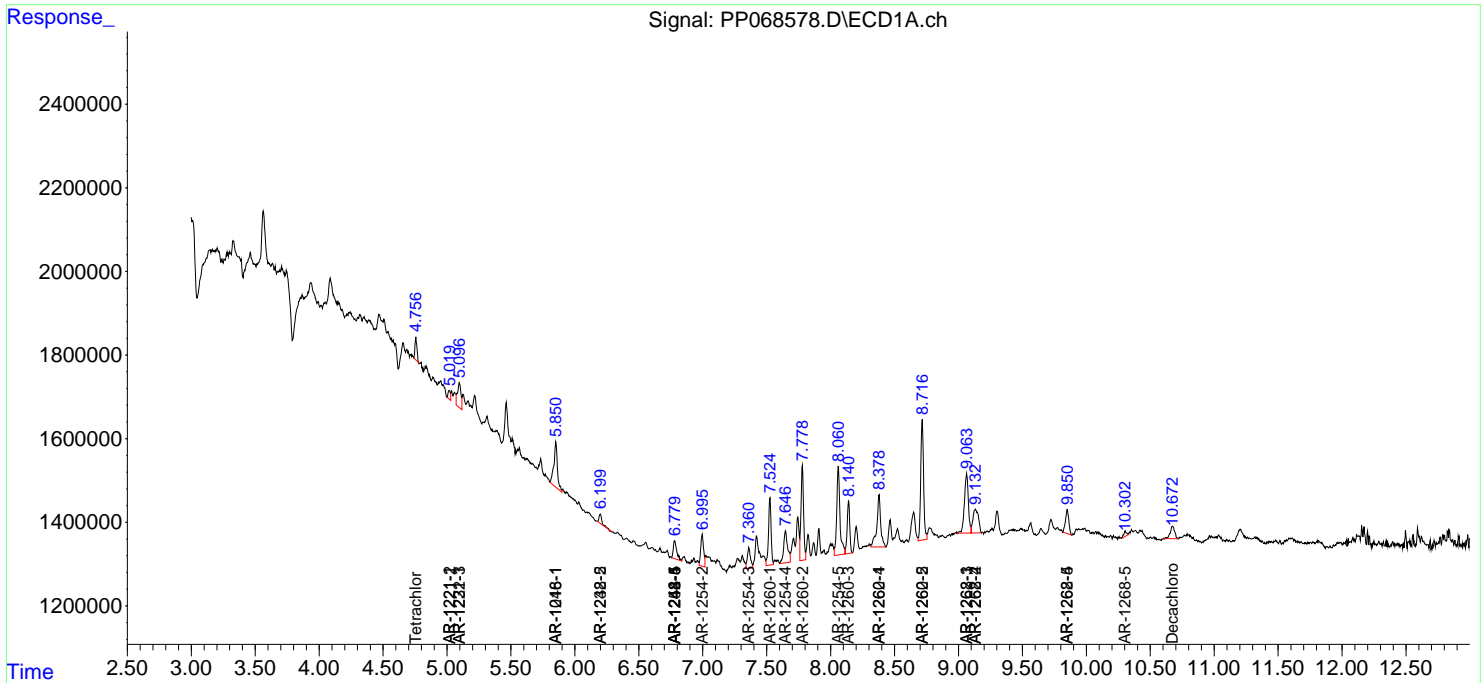
(f)=RT Delta > 1/2 Window (#)=Amounts differ by > 25% (m)=manual int.

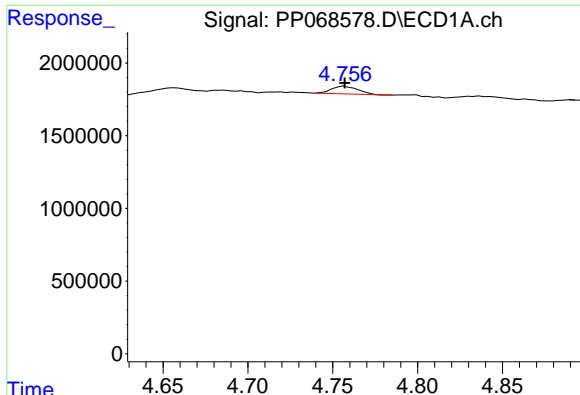
Data Path : Z:\pestpcbsrv\HPCHEM1\ECD_P\Data\PP111824\
 Data File : PP068578.D
 Signal(s) : Signal #1: ECD1A.ch Signal #2: ECD2B.ch
 Acq On : 19 Nov 2024 04:08
 Operator : YP\AJ
 Sample : P4865-05 10X
 Misc :
 ALS Vial : 41 Sample Multiplier: 1

Instrument :
 ECD_P
ClientSampleId :
 D3690

Integration File signal 1: autoint1.e
 Integration File signal 2: autoint2.e
 Quant Time: Nov 19 06:11:08 2024
 Quant Method : Z:\pestpcbsrv\HPCHEM1\ECD_P\methods\PP110724.M
 Quant Title : GC EXTRACTABLES
 QLast Update : Fri Nov 08 11:04:08 2024
 Response via : Initial Calibration
 Integrator: ChemStation

Volume Inj. : 2 µl
 Signal #1 Phase : ZB-MR1 Signal #2 Phase: ZB-MR2
 Signal #1 Info : 30Mx0.32mmx 0.50µ Signal #2 Info : 30M x 0.32mm x 0.25µm

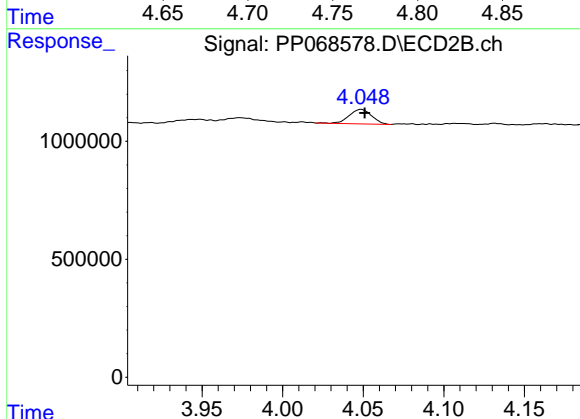




#1 Tetrachloro-m-xylene

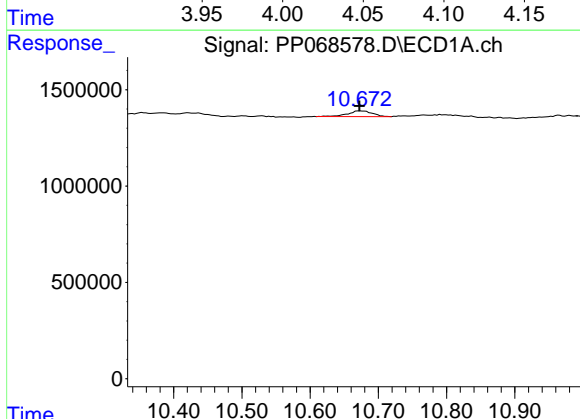
R.T.: 4.757 min
 Delta R.T.: 0.000 min
 Response: 569904
 Conc: 0.59 ng/ml

Instrument :
 ECD_P
 ClientSampleId :
 D3690



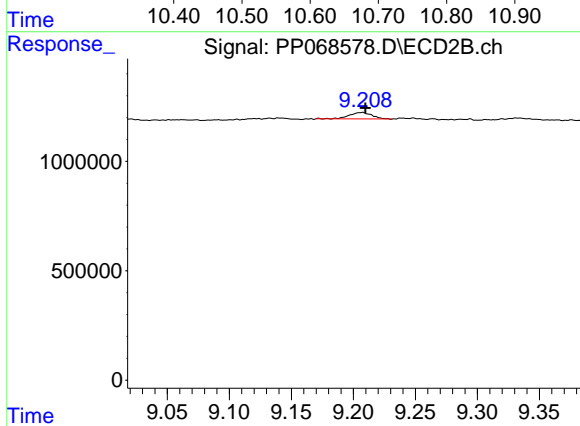
#1 Tetrachloro-m-xylene

R.T.: 4.049 min
 Delta R.T.: -0.002 min
 Response: 601003
 Conc: 0.62 ng/ml



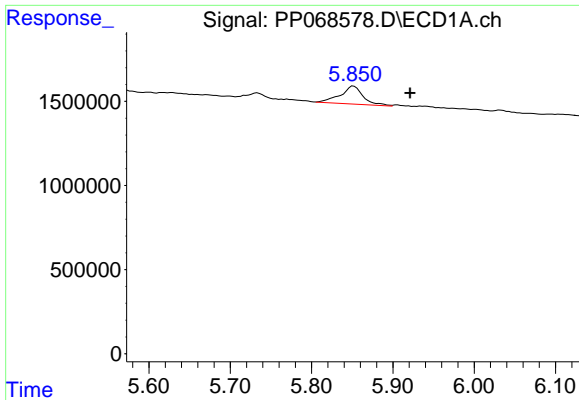
#2 Decachlorobiphenyl

R.T.: 10.673 min
 Delta R.T.: 0.001 min
 Response: 729243
 Conc: 0.58 ng/ml



#2 Decachlorobiphenyl

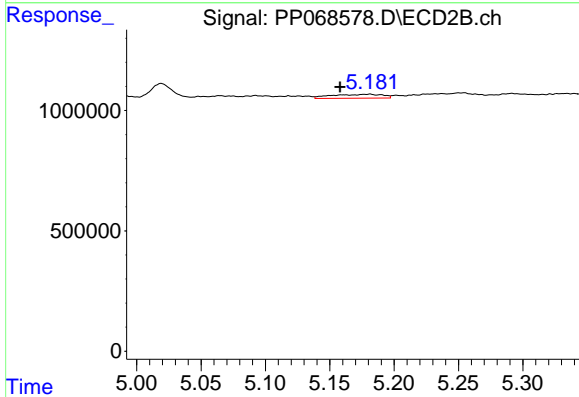
R.T.: 9.207 min
 Delta R.T.: -0.003 min
 Response: 378060
 Conc: 0.33 ng/ml



#3 AR-1016-1

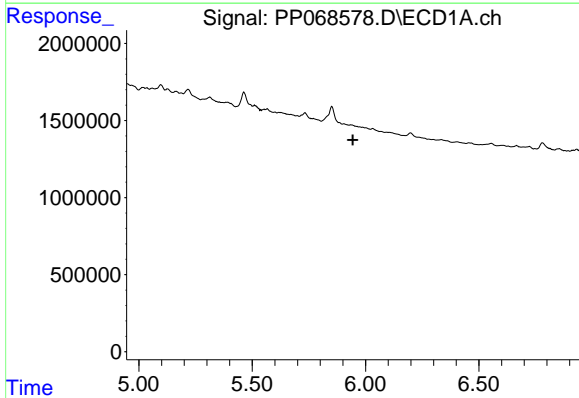
R.T.: 5.852 min
 Delta R.T.: -0.070 min
 Response: 2102717
 Conc: 58.51 ng/ml

Instrument :
 ECD_P
 ClientSampleId :
 D3690



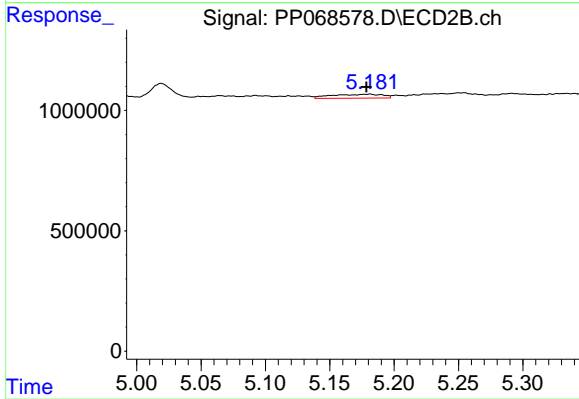
#3 AR-1016-1

R.T.: 5.181 min
 Delta R.T.: 0.023 min
 Response: 448708
 Conc: 13.58 ng/ml



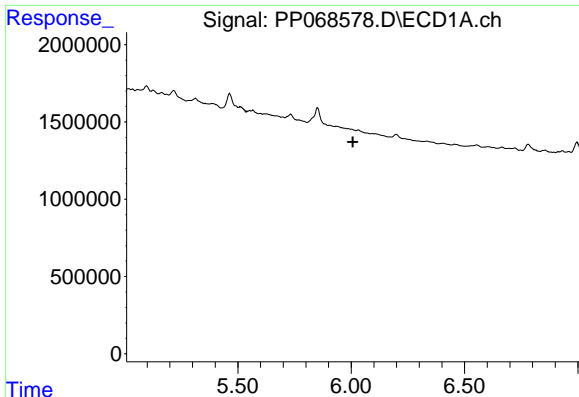
#4 AR-1016-2

R.T.: 0.000 min
 Exp R.T. : 5.944 min
 Response: 0
 Conc: N.D.



#4 AR-1016-2

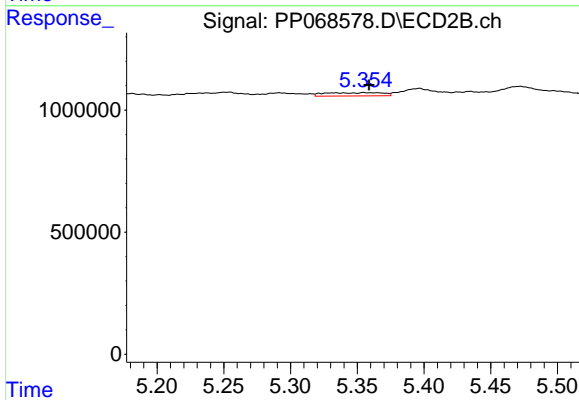
R.T.: 5.181 min
 Delta R.T.: 0.003 min
 Response: 448708
 Conc: 9.60 ng/ml



#5 AR-1016-3

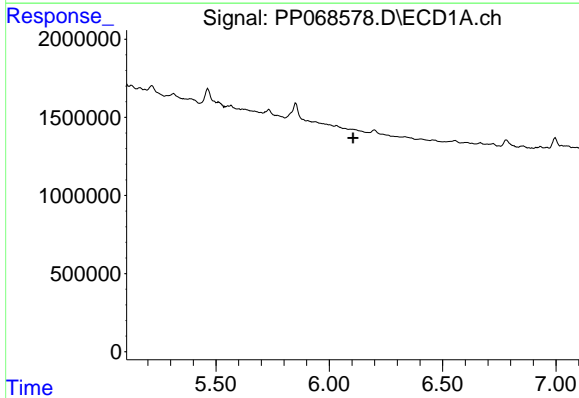
R.T.: 0.000 min
 Exp R.T.: 6.008 min
 Response: 0
 Conc: N.D.

Instrument :
 ECD_P
 ClientSampleId :
 D3690



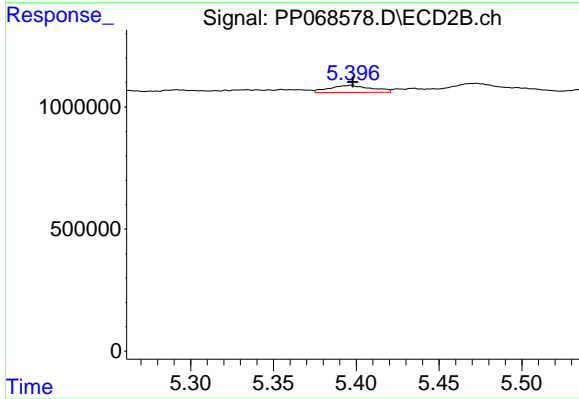
#5 AR-1016-3

R.T.: 5.355 min
 Delta R.T.: -0.004 min
 Response: 400278
 Conc: 14.80 ng/ml



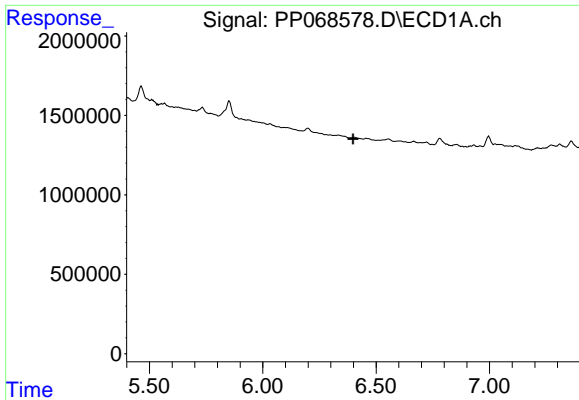
#6 AR-1016-4

R.T.: 0.000 min
 Exp R.T.: 6.105 min
 Response: 0
 Conc: N.D.



#6 AR-1016-4

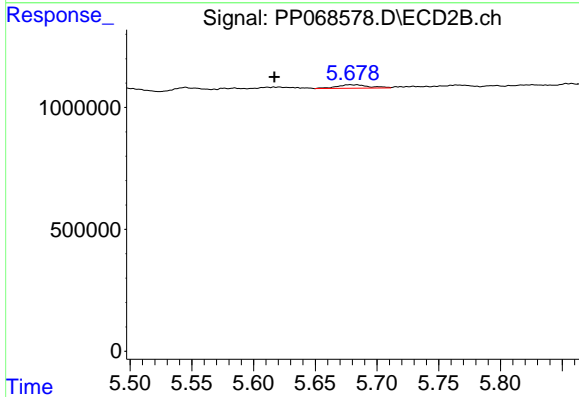
R.T.: 5.396 min
 Delta R.T.: -0.002 min
 Response: 512764
 Conc: 21.73 ng/ml



#7 AR-1016-5

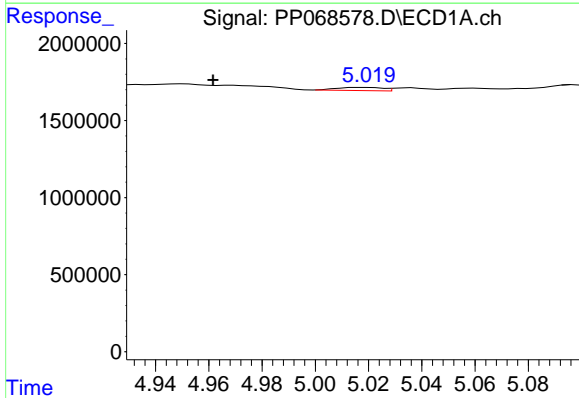
R.T.: 0.000 min
 Exp R.T.: 6.399 min
 Response: 0
 Conc: N.D.

Instrument :
 ECD_P
 ClientSampleId :
 D3690



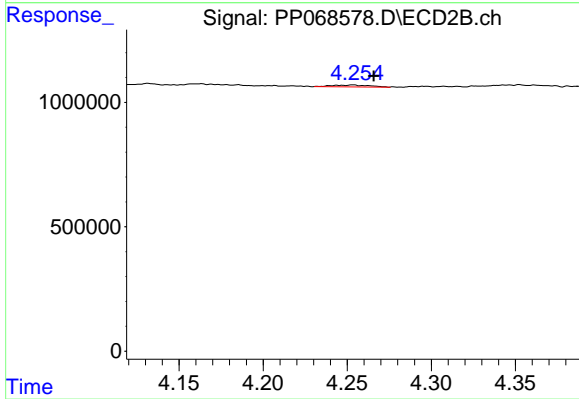
#7 AR-1016-5

R.T.: 5.678 min
 Delta R.T.: 0.061 min
 Response: 253787
 Conc: 8.56 ng/ml



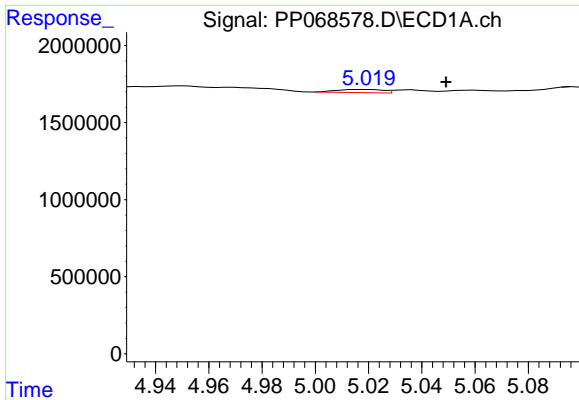
#8 AR-1221-1

R.T.: 5.019 min
 Delta R.T.: 0.057 min
 Response: 249438
 Conc: 18.39 ng/ml



#8 AR-1221-1

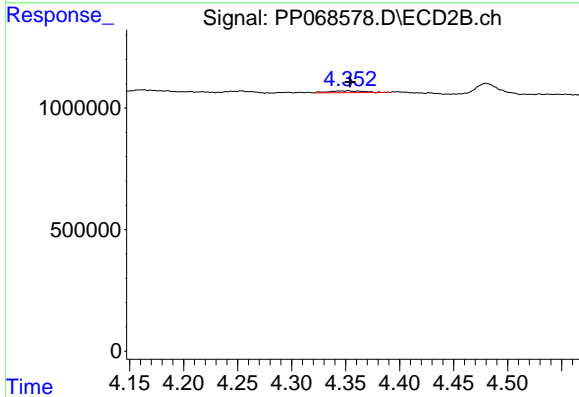
R.T.: 4.254 min
 Delta R.T.: -0.012 min
 Response: 116820
 Conc: 9.26 ng/ml



#9 AR-1221-2

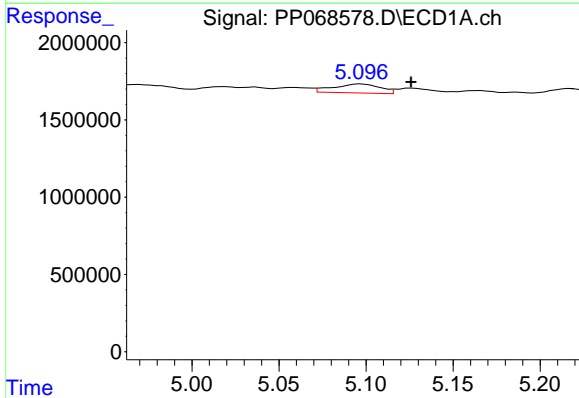
R.T.: 5.019 min
 Delta R.T.: -0.030 min
 Response: 249438
 Conc: 24.73 ng/ml

Instrument :
 ECD_P
 ClientSampleId :
 D3690



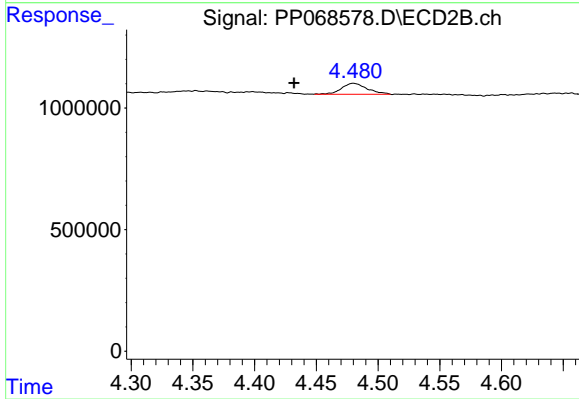
#9 AR-1221-2

R.T.: 4.352 min
 Delta R.T.: -0.002 min
 Response: 171424
 Conc: 17.54 ng/ml



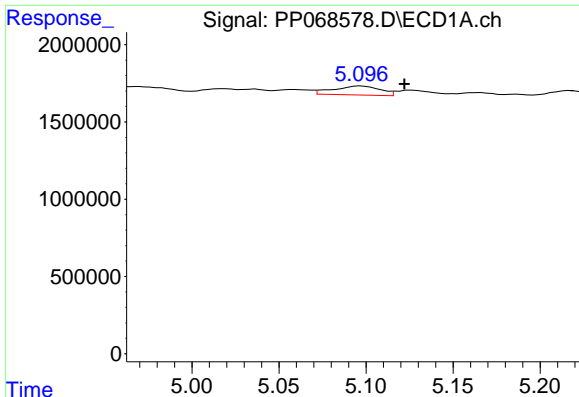
#10 AR-1221-3

R.T.: 5.097 min
 Delta R.T.: -0.029 min
 Response: 1084368
 Conc: 35.84 ng/ml



#10 AR-1221-3

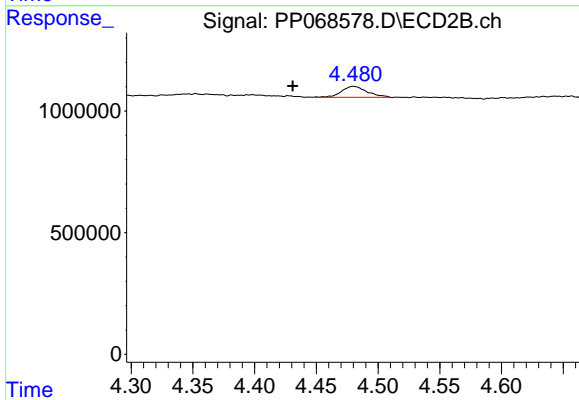
R.T.: 4.480 min
 Delta R.T.: 0.048 min
 Response: 647616
 Conc: 21.24 ng/ml



#11 AR-1232-1

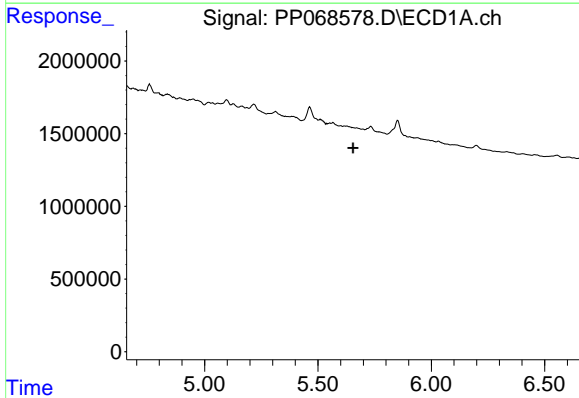
R.T.: 5.097 min
 Delta R.T.: -0.025 min
 Response: 1084368
 Conc: 46.50 ng/ml

Instrument :
 ECD_P
 ClientSampleId :
 D3690



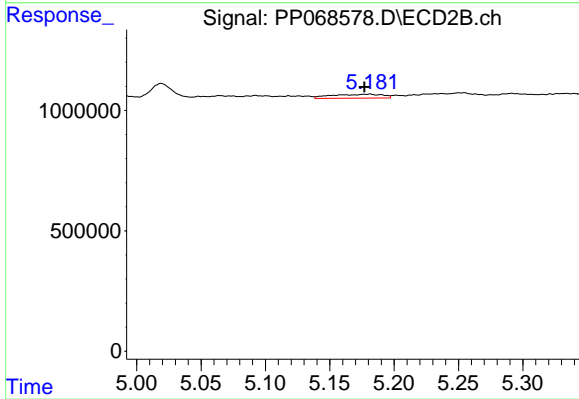
#11 AR-1232-1

R.T.: 4.480 min
 Delta R.T.: 0.049 min
 Response: 647616
 Conc: 27.44 ng/ml



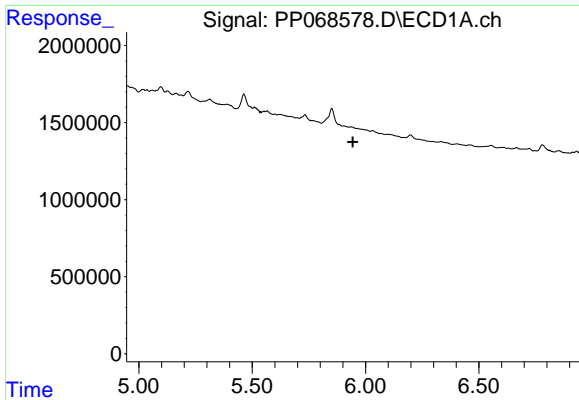
#12 AR-1232-2

R.T.: 0.000 min
 Exp R.T. : 5.656 min
 Response: 0
 Conc: N.D.



#12 AR-1232-2

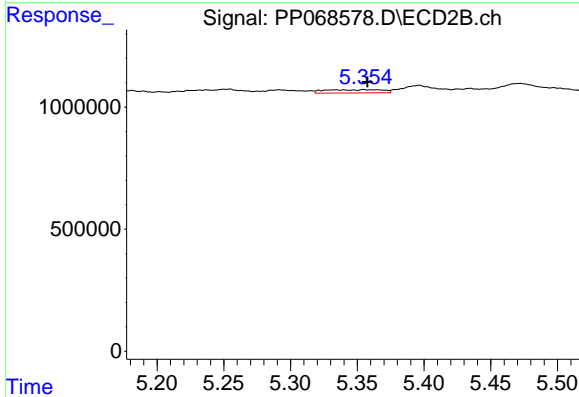
R.T.: 5.181 min
 Delta R.T.: 0.004 min
 Response: 448708
 Conc: 20.60 ng/ml



#13 AR-1232-3

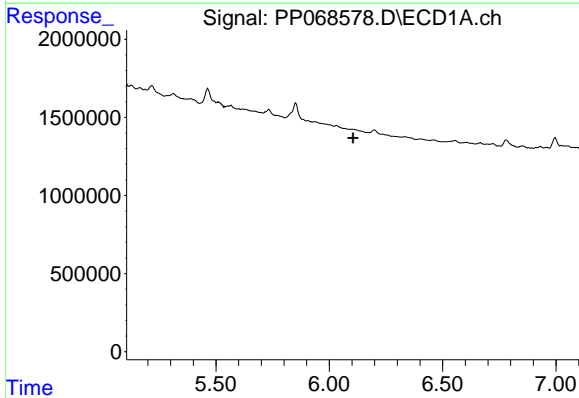
R.T.: 0.000 min
 Exp R.T.: 5.943 min
 Response: 0
 Conc: N.D.

Instrument :
 ECD_P
 ClientSampleId :
 D3690



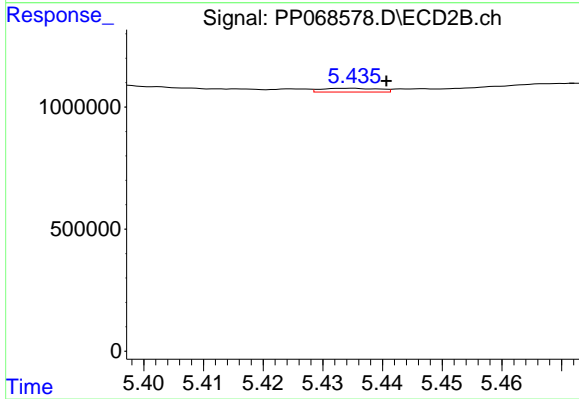
#13 AR-1232-3

R.T.: 5.355 min
 Delta R.T.: -0.003 min
 Response: 400278
 Conc: 35.71 ng/ml



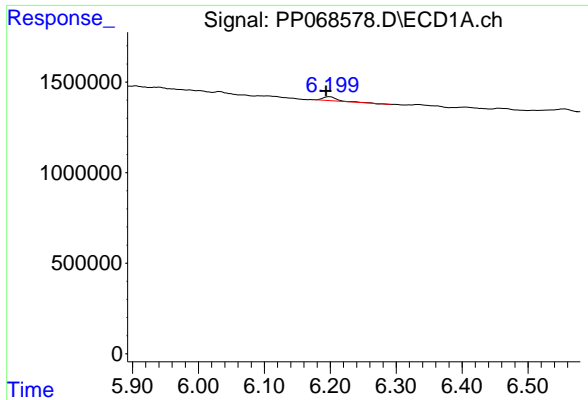
#14 AR-1232-4

R.T.: 0.000 min
 Exp R.T.: 6.105 min
 Response: 0
 Conc: N.D.



#14 AR-1232-4

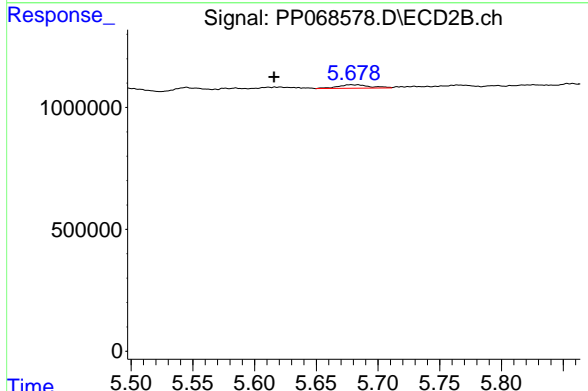
R.T.: 5.434 min
 Delta R.T.: -0.006 min
 Response: 103653
 Conc: 9.46 ng/ml



#15 AR-1232-5

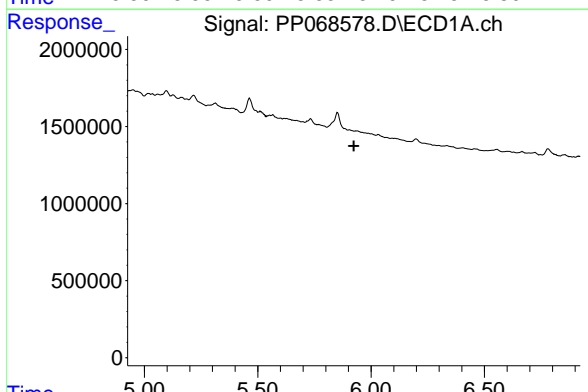
R.T.: 6.199 min
 Delta R.T.: 0.005 min
 Response: 338642
 Conc: 34.05 ng/ml

Instrument :
 ECD_P
 ClientSampleId :
 D3690



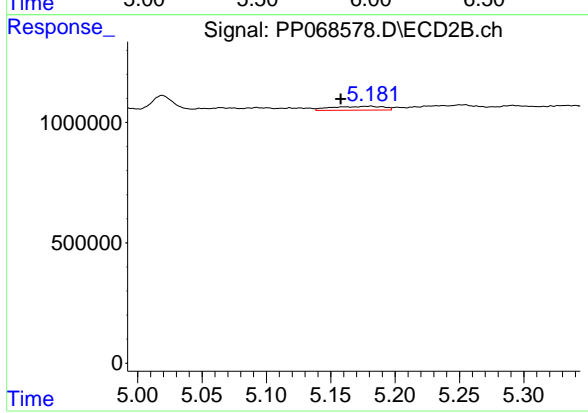
#15 AR-1232-5

R.T.: 5.678 min
 Delta R.T.: 0.062 min
 Response: 253787
 Conc: 20.60 ng/ml



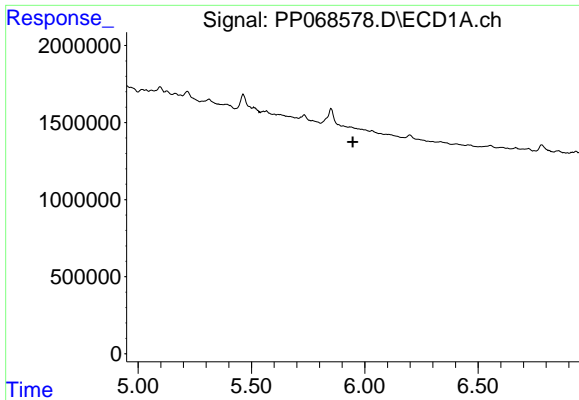
#16 AR-1242-1

R.T.: 0.000 min
 Exp R.T. : 5.925 min
 Response: 0
 Conc: N.D.



#16 AR-1242-1

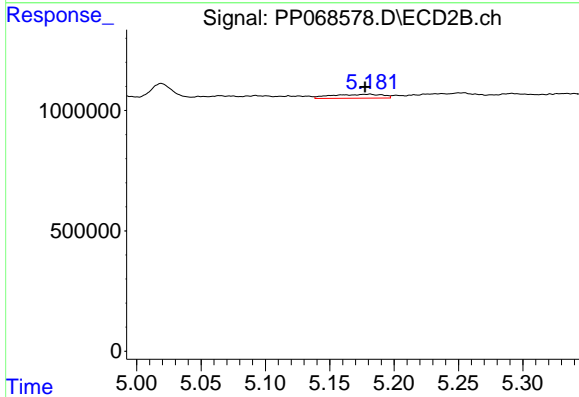
R.T.: 5.181 min
 Delta R.T.: 0.023 min
 Response: 448708
 Conc: 16.15 ng/ml



#17 AR-1242-2

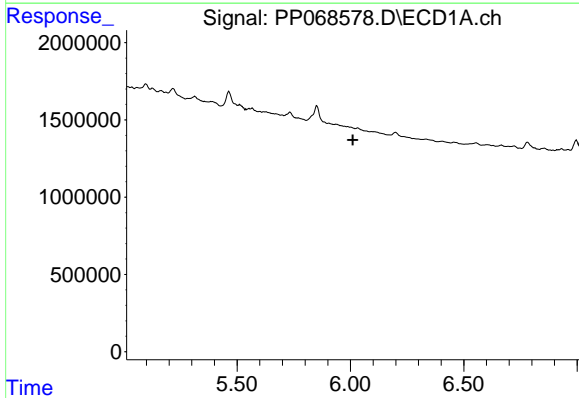
R.T.: 0.000 min
 Exp R.T.: 5.947 min
 Response: 0
 Conc: N.D.

Instrument :
 ECD_P
 ClientSampleId :
 D3690



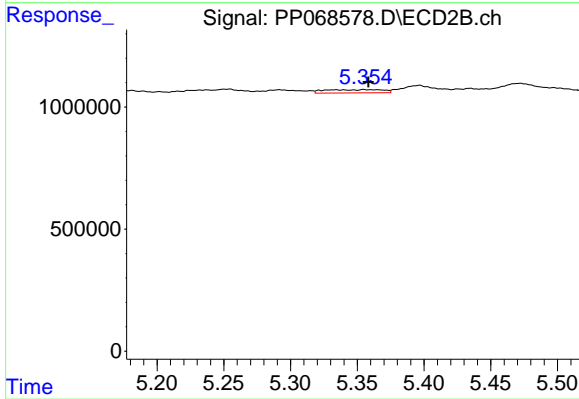
#17 AR-1242-2

R.T.: 5.181 min
 Delta R.T.: 0.004 min
 Response: 448708
 Conc: 11.62 ng/ml



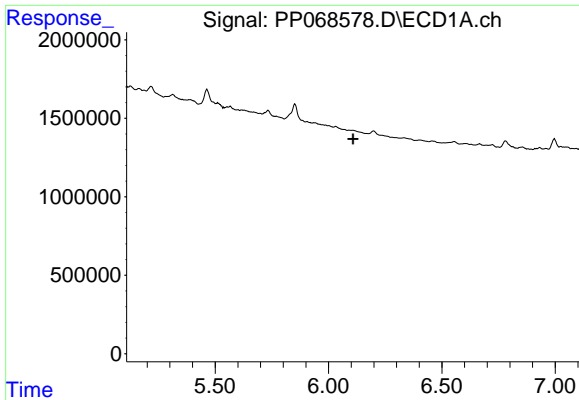
#18 AR-1242-3

R.T.: 0.000 min
 Exp R.T.: 6.010 min
 Response: 0
 Conc: N.D.



#18 AR-1242-3

R.T.: 5.355 min
 Delta R.T.: -0.003 min
 Response: 400278
 Conc: 18.81 ng/ml

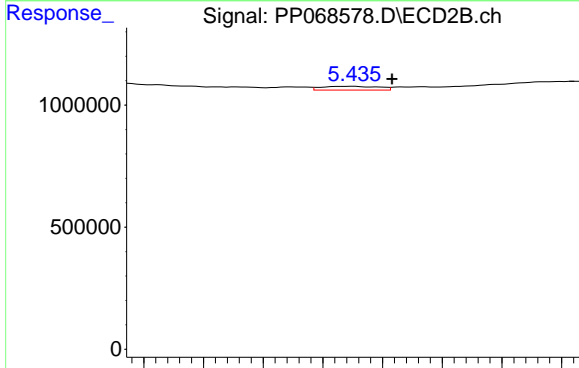


#19 AR-1242-4

R.T.: 0.000 min
 Exp R.T.: 6.109 min
 Response: 0
 Conc: N.D.

Instrument :
 ECD_P
 ClientSampleId :
 D3690

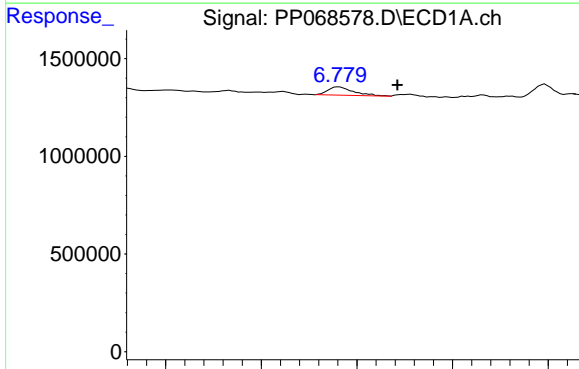
Time



#19 AR-1242-4

R.T.: 5.434 min
 Delta R.T.: -0.007 min
 Response: 103653
 Conc: 4.55 ng/ml

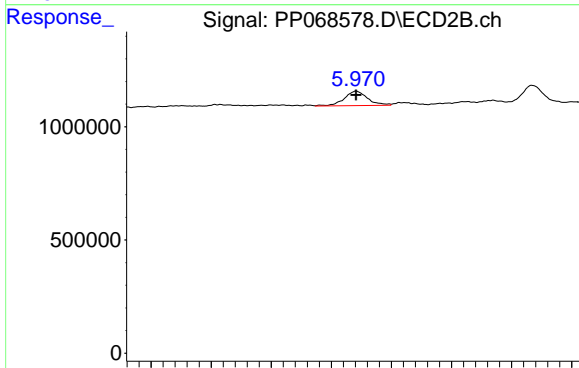
Time



#20 AR-1242-5

R.T.: 6.781 min
 Delta R.T.: -0.062 min
 Response: 797280
 Conc: 32.84 ng/ml

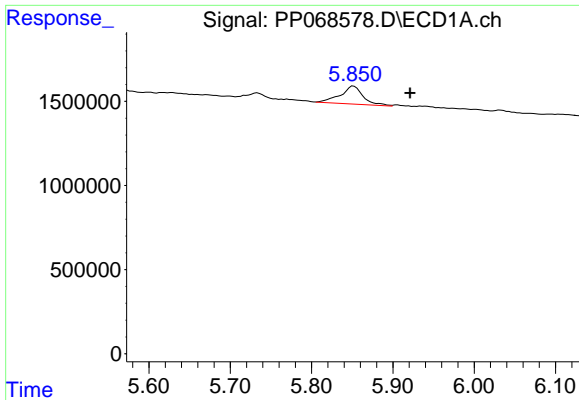
Time



#20 AR-1242-5

R.T.: 5.971 min
 Delta R.T.: 0.000 min
 Response: 864398
 Conc: 31.49 ng/ml

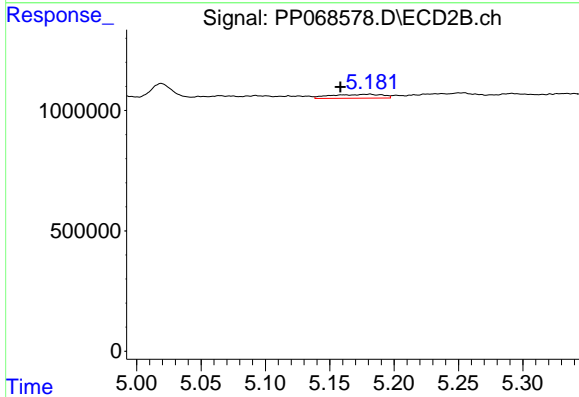
Time



#21 AR-1248-1

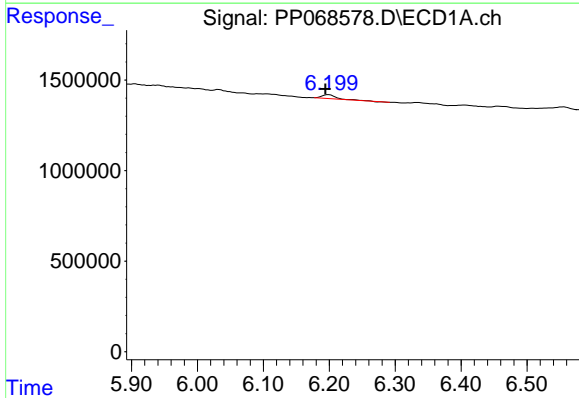
R.T.: 5.852 min
 Delta R.T.: -0.069 min
 Response: 2102717
 Conc: 93.19 ng/ml

Instrument :
 ECD_P
 ClientSampleId :
 D3690



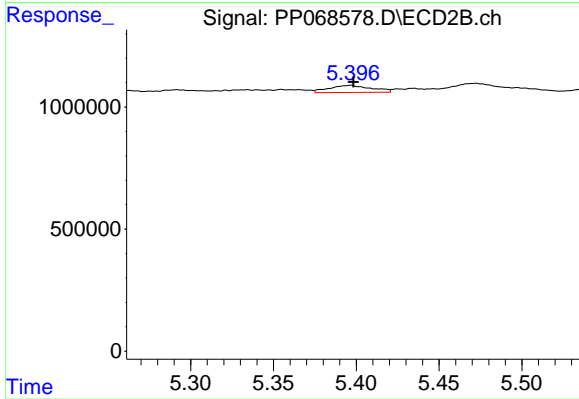
#21 AR-1248-1

R.T.: 5.181 min
 Delta R.T.: 0.023 min
 Response: 448708
 Conc: 20.54 ng/ml



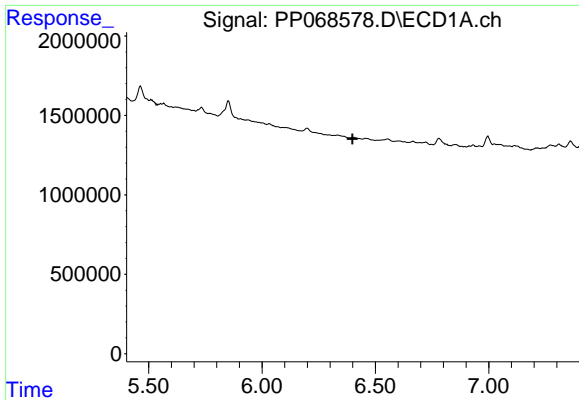
#22 AR-1248-2

R.T.: 6.199 min
 Delta R.T.: 0.005 min
 Response: 338642
 Conc: 10.08 ng/ml



#22 AR-1248-2

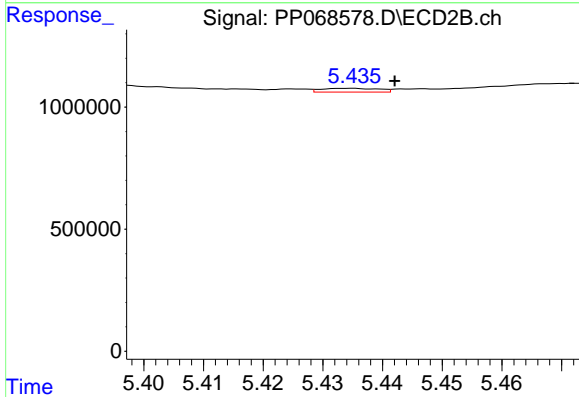
R.T.: 5.396 min
 Delta R.T.: -0.002 min
 Response: 512764
 Conc: 16.04 ng/ml



#23 AR-1248-3

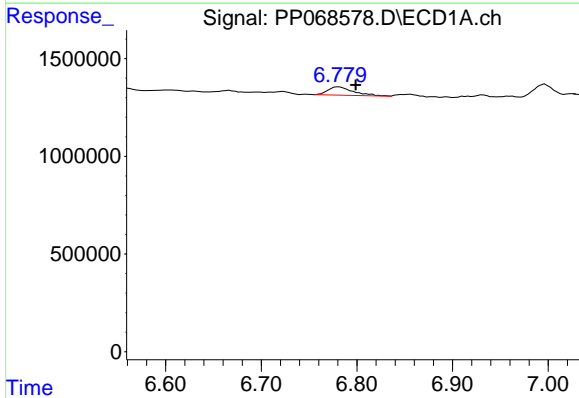
R.T.: 0.000 min
 Exp R.T.: 6.399 min
 Response: 0
 Conc: N.D.

Instrument :
 ECD_P
 ClientSampleId :
 D3690



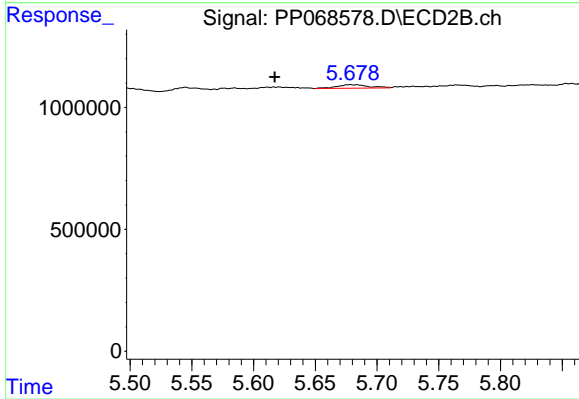
#23 AR-1248-3

R.T.: 5.434 min
 Delta R.T.: -0.008 min
 Response: 103653
 Conc: 3.09 ng/ml



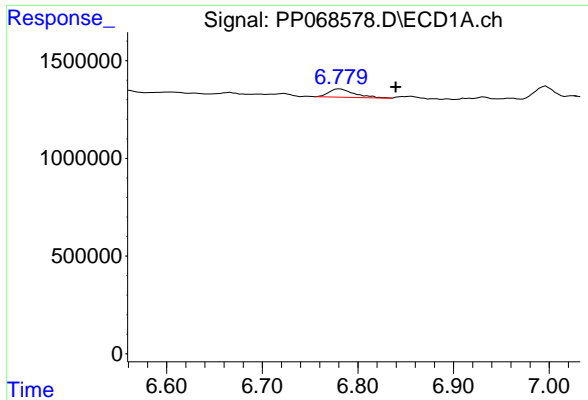
#24 AR-1248-4

R.T.: 6.781 min
 Delta R.T.: -0.018 min
 Response: 797280
 Conc: 18.63 ng/ml



#24 AR-1248-4

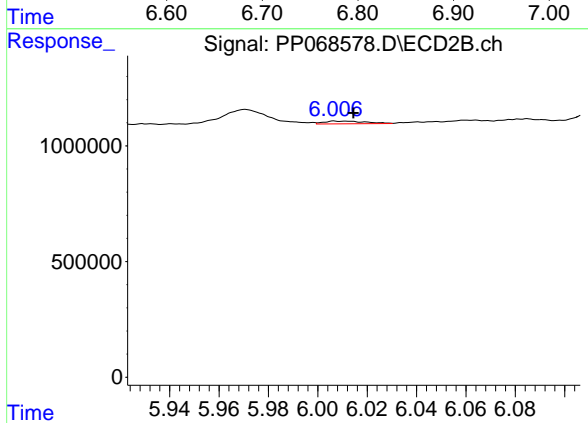
R.T.: 5.678 min
 Delta R.T.: 0.061 min
 Response: 253787
 Conc: 6.54 ng/ml



#25 AR-1248-5

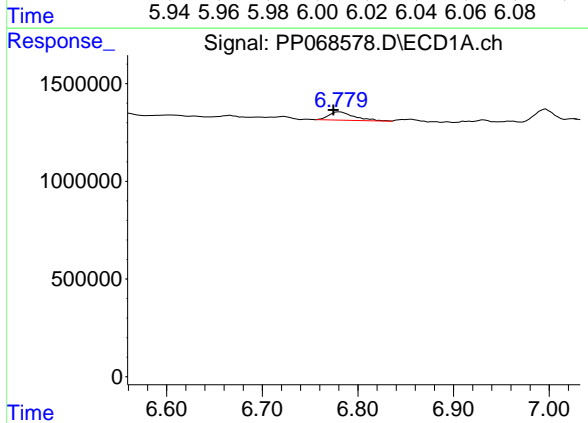
R.T.: 6.781 min
 Delta R.T.: -0.059 min
 Response: 797280
 Conc: 19.19 ng/ml

Instrument :
 ECD_P
 ClientSampleId :
 D3690



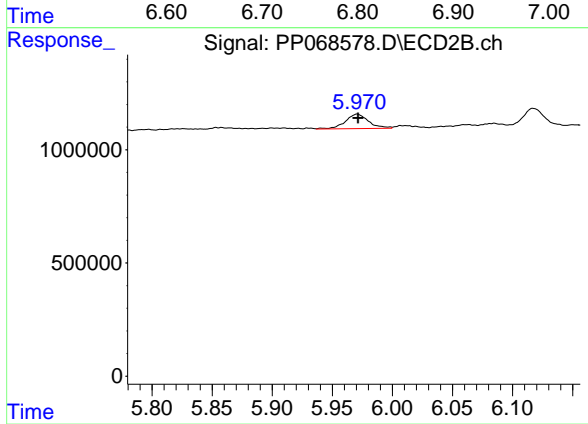
#25 AR-1248-5

R.T.: 6.007 min
 Delta R.T.: -0.007 min
 Response: 137452
 Conc: 3.71 ng/ml



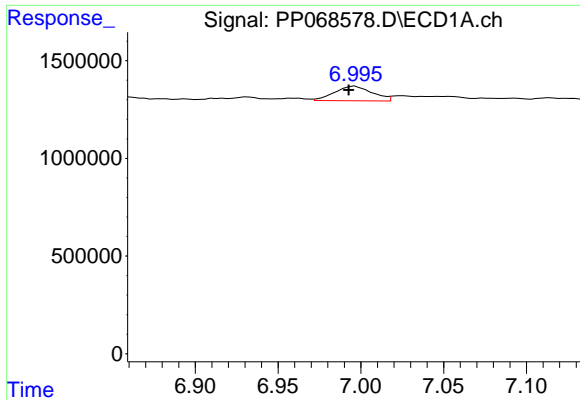
#26 AR-1254-1

R.T.: 6.781 min
 Delta R.T.: 0.006 min
 Response: 797280
 Conc: 15.37 ng/ml



#26 AR-1254-1

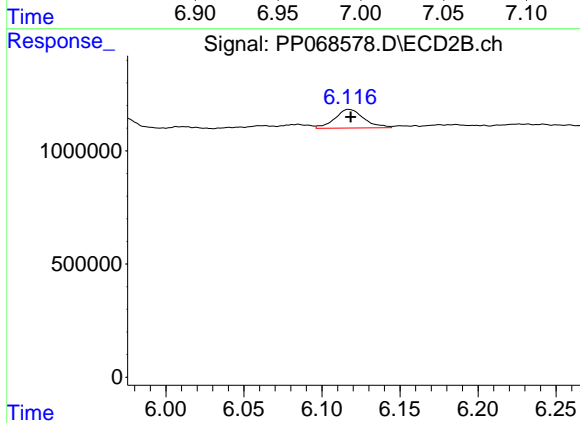
R.T.: 5.971 min
 Delta R.T.: 0.000 min
 Response: 864398
 Conc: 14.25 ng/ml



#27 AR-1254-2

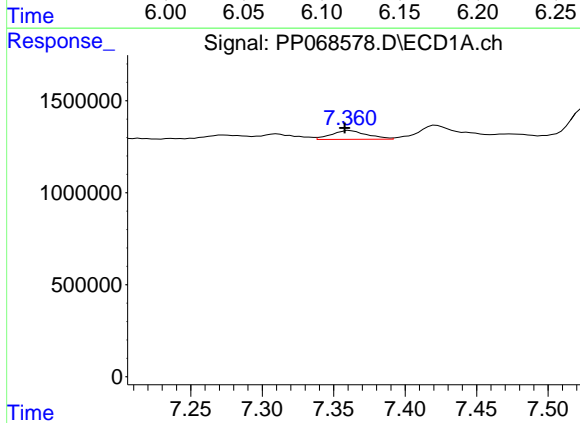
R.T.: 6.996 min
 Delta R.T.: 0.004 min
 Response: 1174082
 Conc: 17.21 ng/ml

Instrument :
 ECD_P
 ClientSampleId :
 D3690



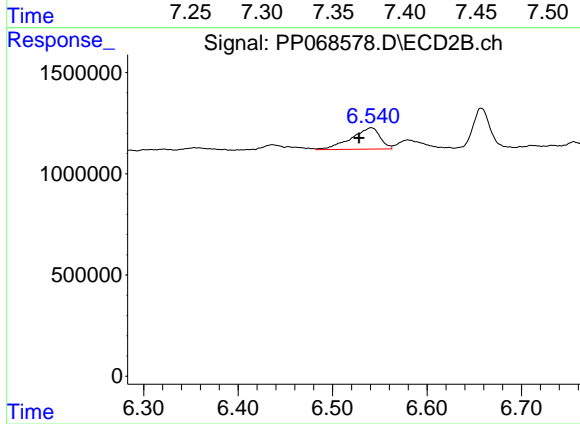
#27 AR-1254-2

R.T.: 6.117 min
 Delta R.T.: -0.001 min
 Response: 1068992
 Conc: 20.27 ng/ml



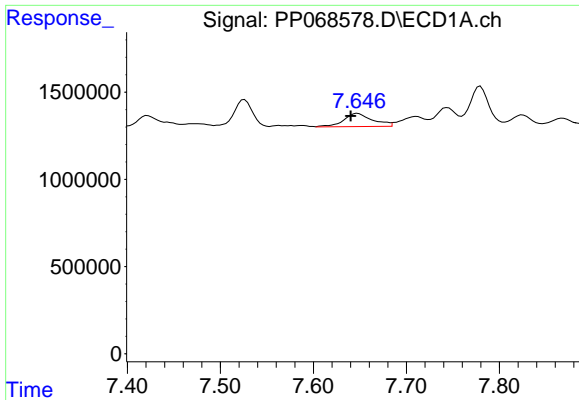
#28 AR-1254-3

R.T.: 7.361 min
 Delta R.T.: 0.004 min
 Response: 834343
 Conc: 11.68 ng/ml



#28 AR-1254-3

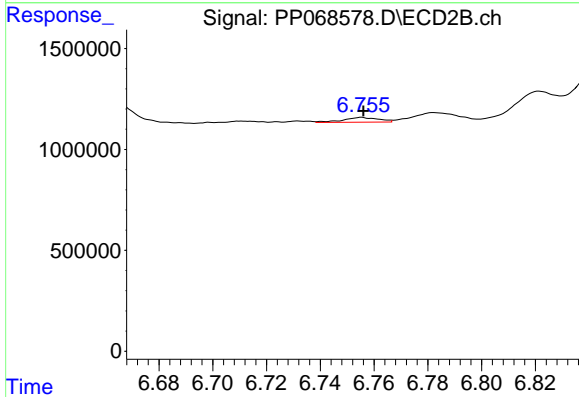
R.T.: 6.541 min
 Delta R.T.: 0.013 min
 Response: 2269635
 Conc: 27.26 ng/ml



#29 AR-1254-4

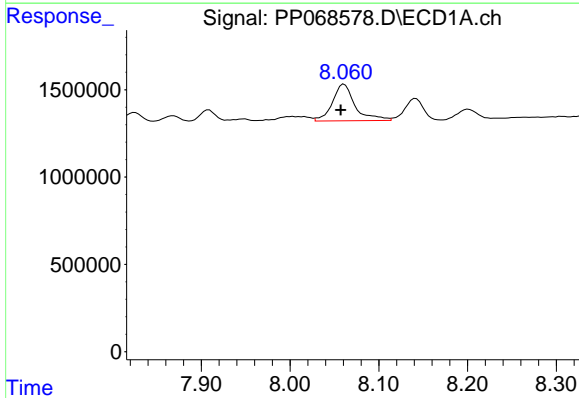
R.T.: 7.648 min
 Delta R.T.: 0.007 min
 Response: 1622297
 Conc: 30.15 ng/ml

Instrument :
 ECD_P
 ClientSampleId :
 D3690



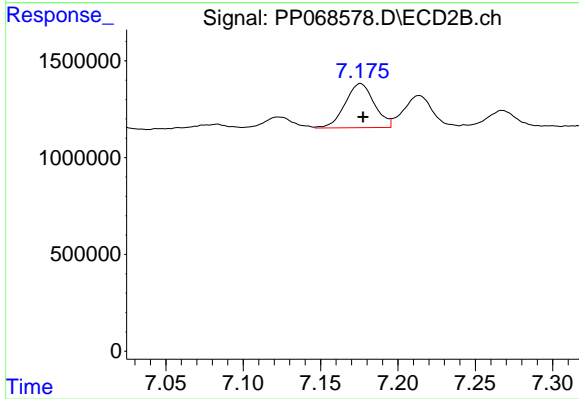
#29 AR-1254-4

R.T.: 6.755 min
 Delta R.T.: 0.000 min
 Response: 215273
 Conc: 4.43 ng/ml



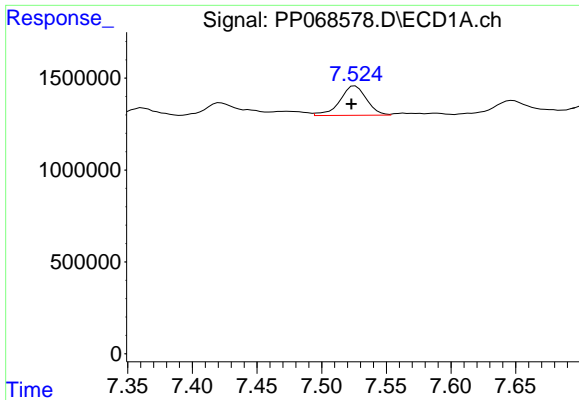
#30 AR-1254-5

R.T.: 8.061 min
 Delta R.T.: 0.004 min
 Response: 3724020
 Conc: 59.43 ng/ml



#30 AR-1254-5

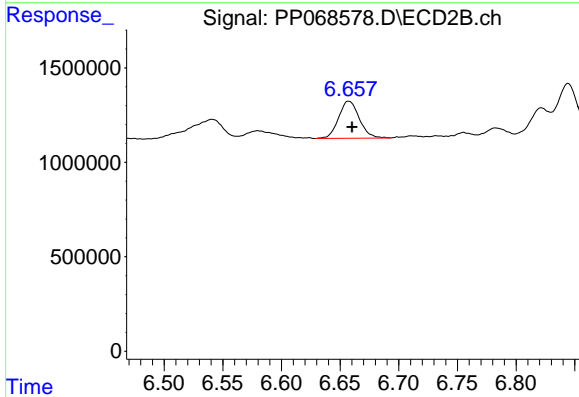
R.T.: 7.176 min
 Delta R.T.: -0.002 min
 Response: 3005917
 Conc: 40.28 ng/ml



#31 AR-1260-1

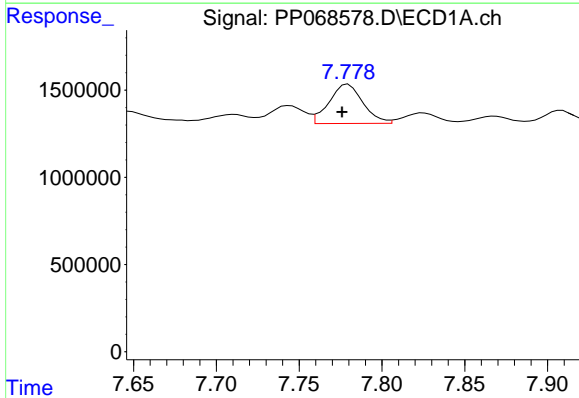
R.T.: 7.526 min
 Delta R.T.: 0.003 min
 Response: 2301712
 Conc: 42.54 ng/ml

Instrument :
 ECD_P
 ClientSampleId :
 D3690



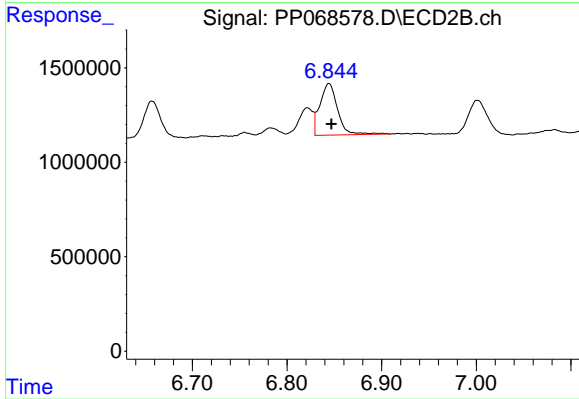
#31 AR-1260-1

R.T.: 6.657 min
 Delta R.T.: -0.003 min
 Response: 2418640
 Conc: 43.46 ng/ml



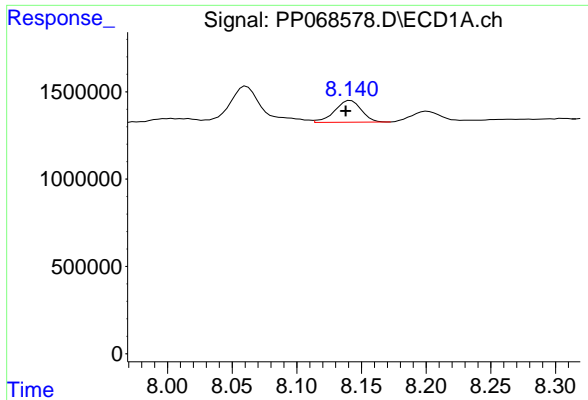
#32 AR-1260-2

R.T.: 7.780 min
 Delta R.T.: 0.004 min
 Response: 3196928
 Conc: 50.26 ng/ml



#32 AR-1260-2

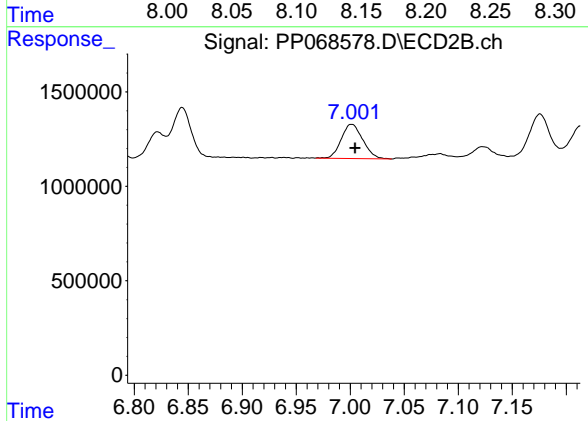
R.T.: 6.844 min
 Delta R.T.: -0.003 min
 Response: 3562111
 Conc: 53.78 ng/ml



#33 AR-1260-3

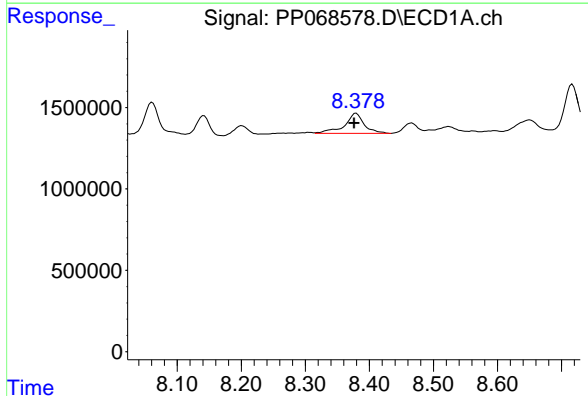
R.T.: 8.142 min
 Delta R.T.: 0.004 min
 Response: 1787334
 Conc: 33.23 ng/ml

Instrument :
 ECD_P
 ClientSampleId :
 D3690



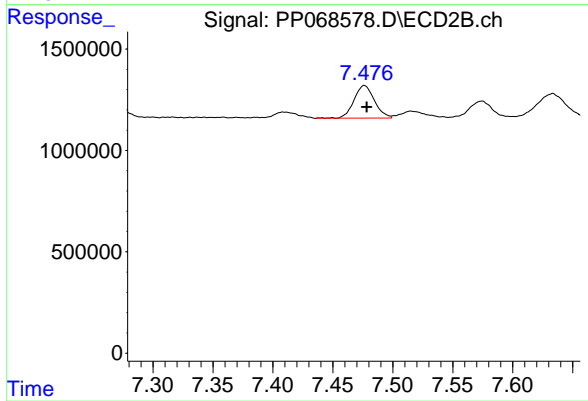
#33 AR-1260-3

R.T.: 7.001 min
 Delta R.T.: -0.003 min
 Response: 2528888
 Conc: 40.86 ng/ml



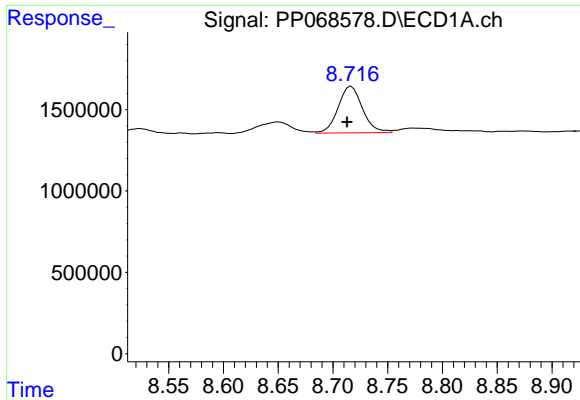
#34 AR-1260-4

R.T.: 8.379 min
 Delta R.T.: 0.003 min
 Response: 2647209
 Conc: 42.54 ng/ml



#34 AR-1260-4

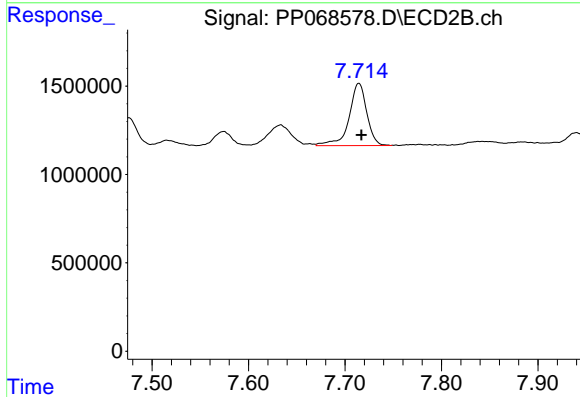
R.T.: 7.476 min
 Delta R.T.: -0.002 min
 Response: 1897515
 Conc: 35.98 ng/ml



#35 AR-1260-5

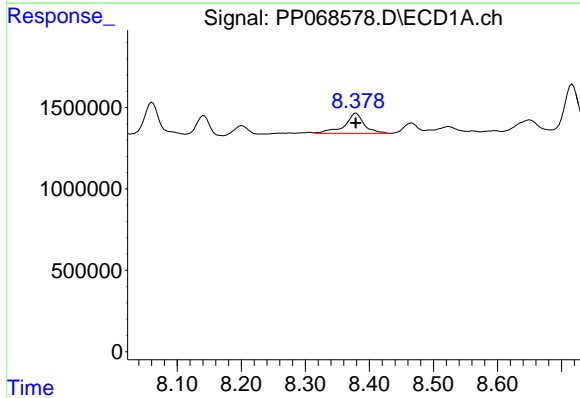
R.T.: 8.717 min
 Delta R.T.: 0.004 min
 Response: 4424165
 Conc: 39.09 ng/ml

Instrument :
 ECD_P
 ClientSampleId :
 D3690



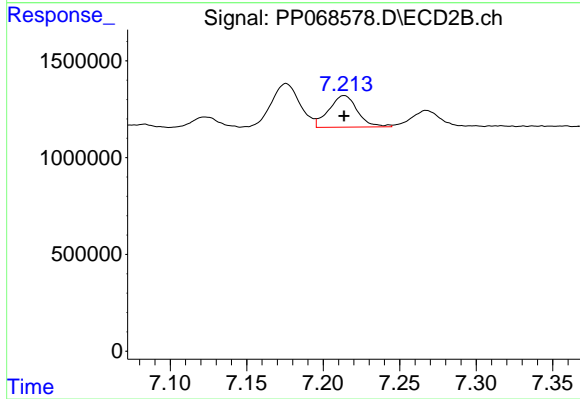
#35 AR-1260-5

R.T.: 7.714 min
 Delta R.T.: -0.003 min
 Response: 4491969
 Conc: 37.72 ng/ml



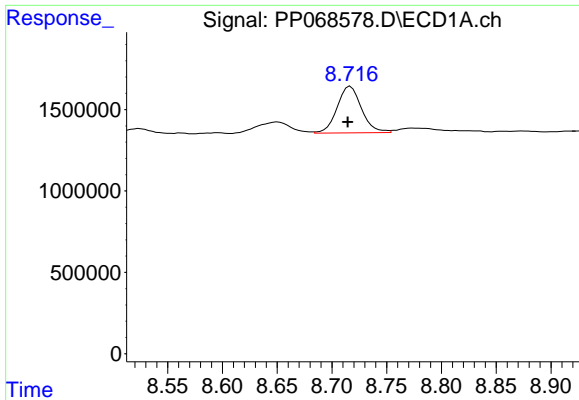
#36 AR-1262-1

R.T.: 8.379 min
 Delta R.T.: 0.000 min
 Response: 2647209
 Conc: 35.71 ng/ml



#36 AR-1262-1

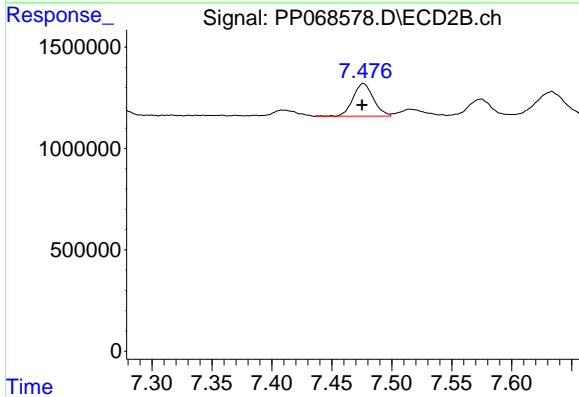
R.T.: 7.214 min
 Delta R.T.: 0.000 min
 Response: 2125088
 Conc: 27.39 ng/ml



#37 AR-1262-2

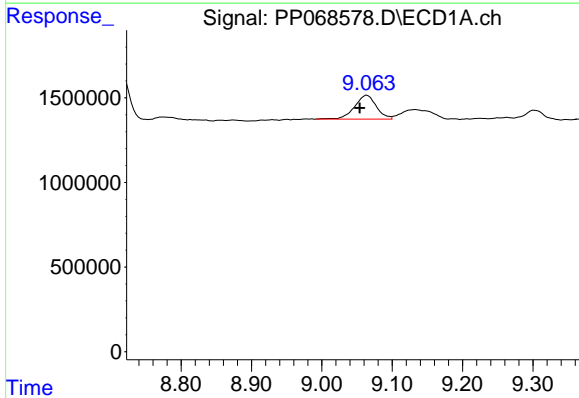
R.T.: 8.717 min
 Delta R.T.: 0.002 min
 Response: 4424165
 Conc: 34.30 ng/ml

Instrument :
 ECD_P
 ClientSampleId :
 D3690



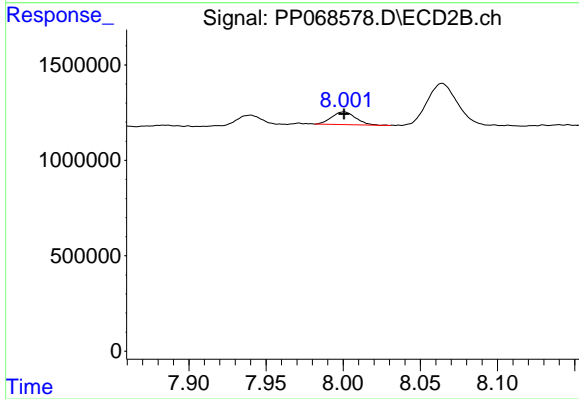
#37 AR-1262-2

R.T.: 7.476 min
 Delta R.T.: 0.001 min
 Response: 1897515
 Conc: 26.84 ng/ml



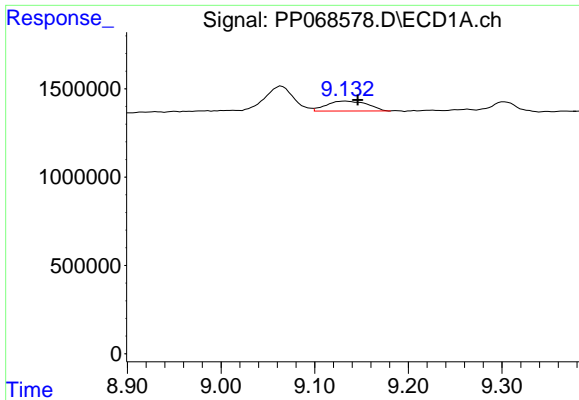
#38 AR-1262-3

R.T.: 9.064 min
 Delta R.T.: 0.011 min
 Response: 3040359
 Conc: 31.78 ng/ml



#38 AR-1262-3

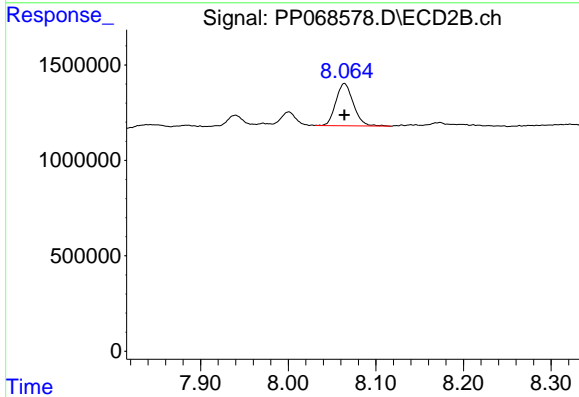
R.T.: 8.001 min
 Delta R.T.: 0.000 min
 Response: 716771
 Conc: 12.18 ng/ml



#39 AR-1262-4

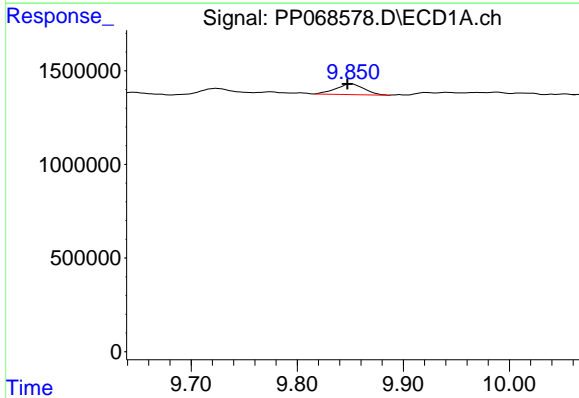
R.T.: 9.133 min
 Delta R.T.: -0.013 min
 Response: 1704399
 Conc: 22.31 ng/ml

Instrument :
 ECD_P
 ClientSampleId :
 D3690



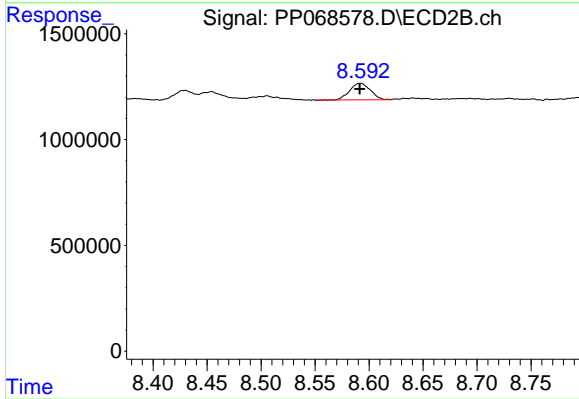
#39 AR-1262-4

R.T.: 8.064 min
 Delta R.T.: 0.000 min
 Response: 3078343
 Conc: 29.71 ng/ml



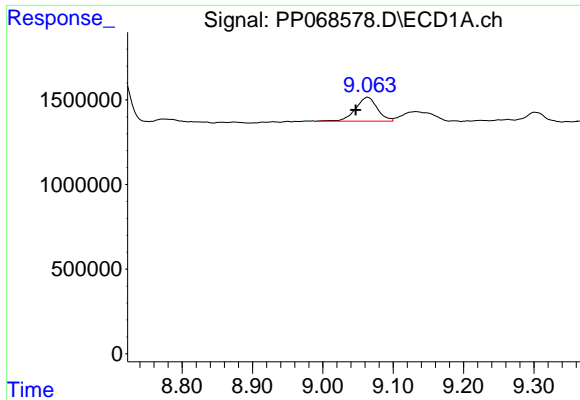
#40 AR-1262-5

R.T.: 9.851 min
 Delta R.T.: 0.004 min
 Response: 1051945
 Conc: 19.67 ng/ml



#40 AR-1262-5

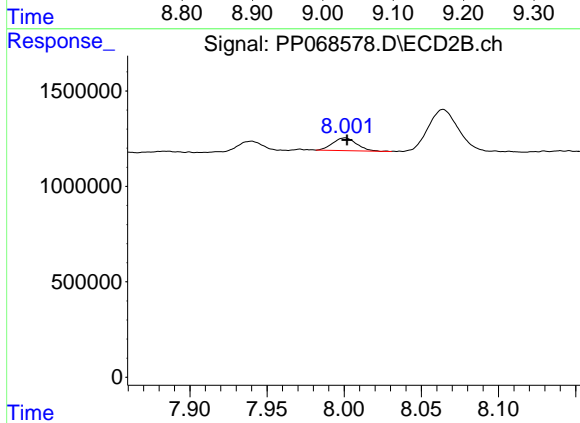
R.T.: 8.592 min
 Delta R.T.: 0.000 min
 Response: 1035544
 Conc: 20.43 ng/ml



#41 AR-1268-1

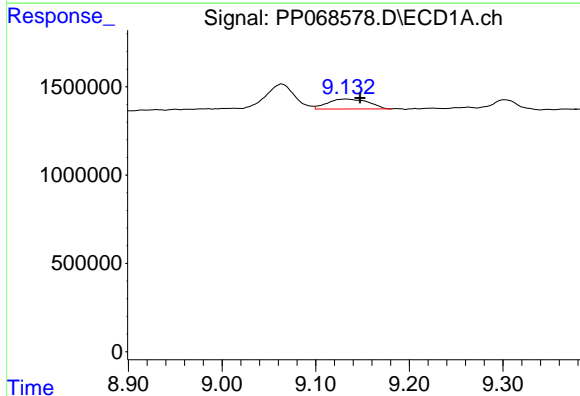
R.T.: 9.064 min
 Delta R.T.: 0.018 min
 Response: 3040359
 Conc: 19.70 ng/ml

Instrument :
 ECD_P
 ClientSampleId :
 D3690



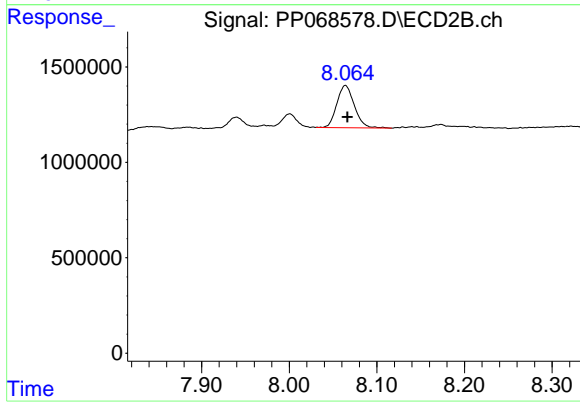
#41 AR-1268-1

R.T.: 8.001 min
 Delta R.T.: -0.001 min
 Response: 716771
 Conc: 4.60 ng/ml



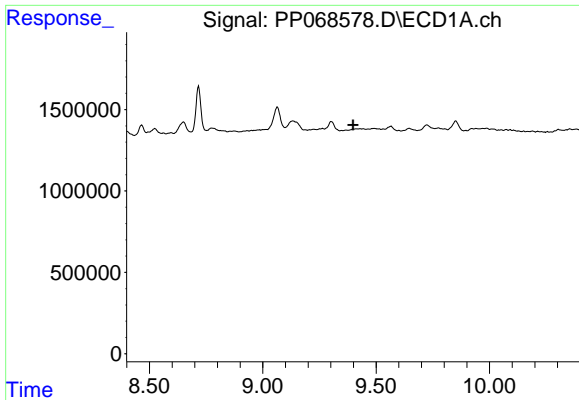
#42 AR-1268-2

R.T.: 9.133 min
 Delta R.T.: -0.014 min
 Response: 1704399
 Conc: 12.18 ng/ml



#42 AR-1268-2

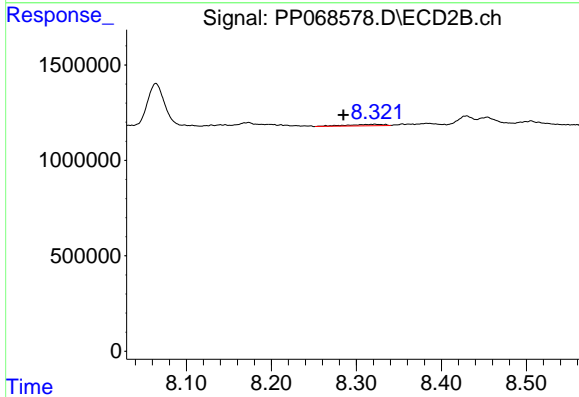
R.T.: 8.064 min
 Delta R.T.: -0.002 min
 Response: 3078343
 Conc: 21.75 ng/ml



#43 AR-1268-3

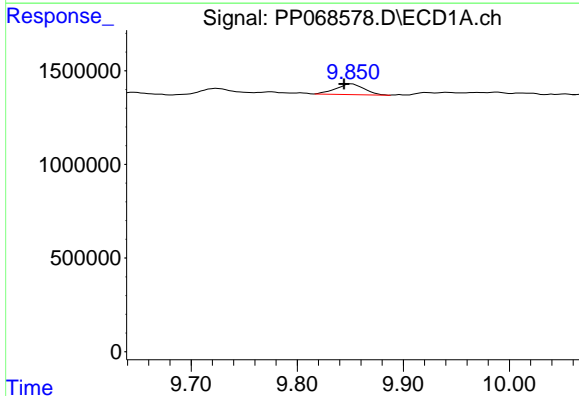
R.T.: 0.000 min
 Exp R.T.: 9.398 min
 Response: 0
 Conc: N.D.

Instrument :
 ECD_P
 ClientSampleId :
 D3690



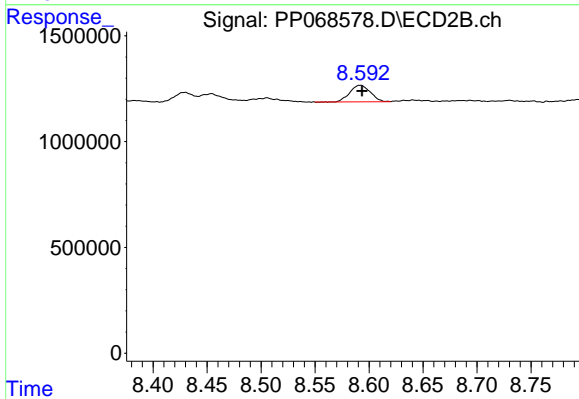
#43 AR-1268-3

R.T.: 8.322 min
 Delta R.T.: 0.037 min
 Response: 224114
 Conc: 1.80 ng/ml



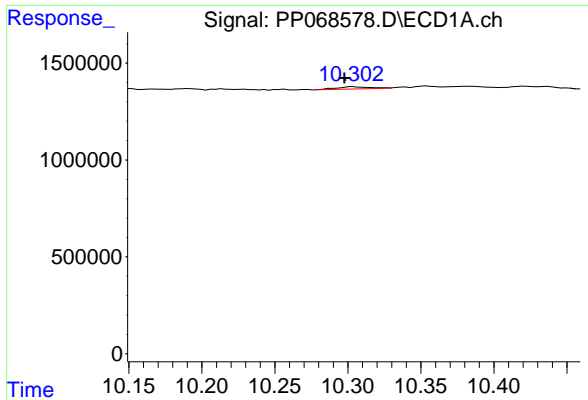
#44 AR-1268-4

R.T.: 9.851 min
 Delta R.T.: 0.007 min
 Response: 1051945
 Conc: 19.69 ng/ml



#44 AR-1268-4

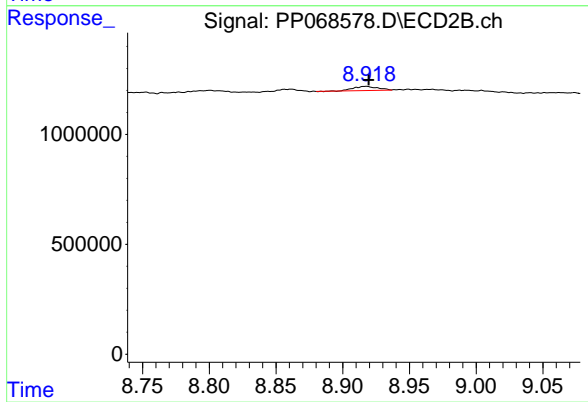
R.T.: 8.592 min
 Delta R.T.: -0.002 min
 Response: 1035544
 Conc: 18.96 ng/ml



#45 AR-1268-5

R.T.: 10.304 min
Delta R.T.: 0.006 min
Response: 180792
Conc: 0.46 ng/ml

Instrument :
ECD_P
ClientSampleId :
D3690



#45 AR-1268-5

R.T.: 8.917 min
Delta R.T.: -0.002 min
Response: 235352
Conc: 0.62 ng/ml