

Data Path : Z:\pestpcbsrv\HPCHEM1\ECD\_P\Data\PP111824\  
 Data File : PP068580.D  
 Signal(s) : Signal #1: ECD1A.ch Signal #2: ECD2B.ch  
 Acq On : 19 Nov 2024 04:41  
 Operator : YP\AJ  
 Sample : P165038BS  
 Misc :  
 ALS Vial : 43 Sample Multiplier: 1

Instrument :  
 ECD\_P  
 ClientSampleId :  
 PB165038BS

Integration File signal 1: autoint1.e  
 Integration File signal 2: autoint2.e  
 Quant Time: Nov 19 06:11:33 2024  
 Quant Method : Z:\pestpcbsrv\HPCHEM1\ECD\_P\methods\PP110724.M  
 Quant Title : GC EXTRACTABLES  
 QLast Update : Fri Nov 08 11:04:08 2024  
 Response via : Initial Calibration  
 Integrator: ChemStation

Volume Inj. : 2 µl  
 Signal #1 Phase : ZB-MR1 Signal #2 Phase: ZB-MR2  
 Signal #1 Info : 30Mx0.32mmx 0.50µ Signal #2 Info : 30M x 0.32mm x 0.25µm

Compound	RT#1	RT#2	Resp#1	Resp#2	ng/ml	ng/ml
System Monitoring Compounds						
1) SA Tetrachlo...	4.758	4.051	18924677	19529251	19.498	20.169
2) SA Decachlor...	10.674	9.207	22924014	21479955	18.318	18.989
Target Compounds						
3) L1 AR-1016-1	5.922	5.157	14576955	14254432	405.635	431.336
4) L1 AR-1016-2	5.944	5.176	21593542	19934726	407.808	426.479
5) L1 AR-1016-3	6.008	5.357	13332904	10999006	402.703	406.765
6) L1 AR-1016-4	6.106	5.396	10787075	9558933	410.435	405.126
7) L1 AR-1016-5	6.401	5.615	10466591	11541092	371.051	389.347
8) L2 AR-1221-1	4.956	4.264	1494667	1482350	110.208	117.550
9) L2 AR-1221-2	5.046	4.353	2160412	1928286	214.208	197.309
10) L2 AR-1221-3	5.124	4.431	8155767	8206127	269.524	269.134
11) L3 AR-1232-1	5.124	4.431	8155767	8206127	349.739	347.693
12) L3 AR-1232-2	5.656	5.176	11181068	19934726	747.661	915.060
13) L3 AR-1232-3	5.944	5.357	21593542	10999006	861.877	981.122
14) L3 AR-1232-4	6.106	5.440	10787075	11560138	871.460	1055.093
15) L3 AR-1232-5	6.196	5.615	9654317	11541092	970.790	936.774
16) L4 AR-1242-1	5.922	5.157	14576955	14254432	487.956	512.938
17) L4 AR-1242-2	5.944	5.176	21593542	19934726	489.626	516.108
18) L4 AR-1242-3	6.008	5.357	13332904	10999006	478.595	516.869
19) L4 AR-1242-4	6.106	5.440	10787075	11560138	493.011	507.164
20) L4 AR-1242-5	6.841	5.971	1152418	9258106	47.463	337.255 #
21) L5 AR-1248-1	5.922	5.157	14576955	14254432	646.014	652.453
22) L5 AR-1248-2	6.196	5.396	9654317	9558933	287.240	299.006
23) L5 AR-1248-3	6.401	5.440	10466591	11560138	286.633	344.994
24) L5 AR-1248-4	6.778	5.615	9320234	11541092	217.835	297.230 #
25) L5 AR-1248-5	6.841	6.012	1152418	1431659	27.743	38.622 #
26) L6 AR-1254-1	6.778	5.971	9320234	9258106	179.628	152.668
27) L6 AR-1254-2	6.993	6.118	9097527	9145493	133.322	173.423 #
28) L6 AR-1254-3	7.359	6.541	4375946	19038195	61.238	228.656 #
29) L6 AR-1254-4	7.644	6.756	3196713	1218292	59.403	25.054 #
30) L6 AR-1254-5	8.060	7.176	30819930	28760242	491.807	385.352
31) L7 AR-1260-1	7.524	6.658	19598911	21795923	362.244	391.668
32) L7 AR-1260-2	7.777	6.845	23188729	25640565	364.540	387.111
33) L7 AR-1260-3	8.139	7.002	16074225	23990862	298.822	387.628 #
34) L7 AR-1260-4	8.377	7.476	22090704	18109731	354.996	343.397
35) L7 AR-1260-5	8.715	7.715	34603562	39631207	305.727	332.823
36) L8 AR-1262-1	8.377	7.213	22090704	19256984	297.988	248.168
37) L8 AR-1262-2	8.715	7.476	34603562	18109731	268.247	256.169
38) L8 AR-1262-3	9.062	8.001	24793567	8849656	259.127	150.383 #
39) L8 AR-1262-4	9.133	8.065	14994980	29398280	196.303	283.763 #
40) L8 AR-1262-5	9.849	8.592	10540849	10123382	197.088	199.706
41) L9 AR-1268-1	9.062	8.001	24793567	8849656	160.691	56.827 #

Data Path : Z:\pestpcbsrv\HPCHEM1\ECD\_P\Data\PP111824\  
 Data File : PP068580.D  
 Signal(s) : Signal #1: ECD1A.ch Signal #2: ECD2B.ch  
 Acq On : 19 Nov 2024 04:41  
 Operator : YP\AJ  
 Sample : P165038BS  
 Misc :  
 ALS Vial : 43 Sample Multiplier: 1

Instrument :  
 ECD\_P  
 ClientSampleId :  
 PB165038BS

Integration File signal 1: autoint1.e  
 Integration File signal 2: autoint2.e  
 Quant Time: Nov 19 06:11:33 2024  
 Quant Method : Z:\pestpcbsrv\HPCHEM1\ECD\_P\methods\PP110724.M  
 Quant Title : GC EXTRACTABLES  
 QLast Update : Fri Nov 08 11:04:08 2024  
 Response via : Initial Calibration  
 Integrator: ChemStation

Volume Inj. : 2 µl  
 Signal #1 Phase : ZB-MR1 Signal #2 Phase: ZB-MR2  
 Signal #1 Info : 30Mx0.32mmx 0.50µ Signal #2 Info : 30M x 0.32mm x 0.25µm

	Compound	RT#1	RT#2	Resp#1	Resp#2	ng/ml	ng/ml
42)	L9 AR-1268-2	9.133	8.065	14994980	29398280	107.117	207.675 #
43)	L9 AR-1268-3	9.401	8.284	917838	787263	7.305	6.323
44)	L9 AR-1268-4	9.849	8.592	10540849	10123382	197.259	185.395
45)	L9 AR-1268-5	10.301	8.918	3398278	3401520	8.561	9.033

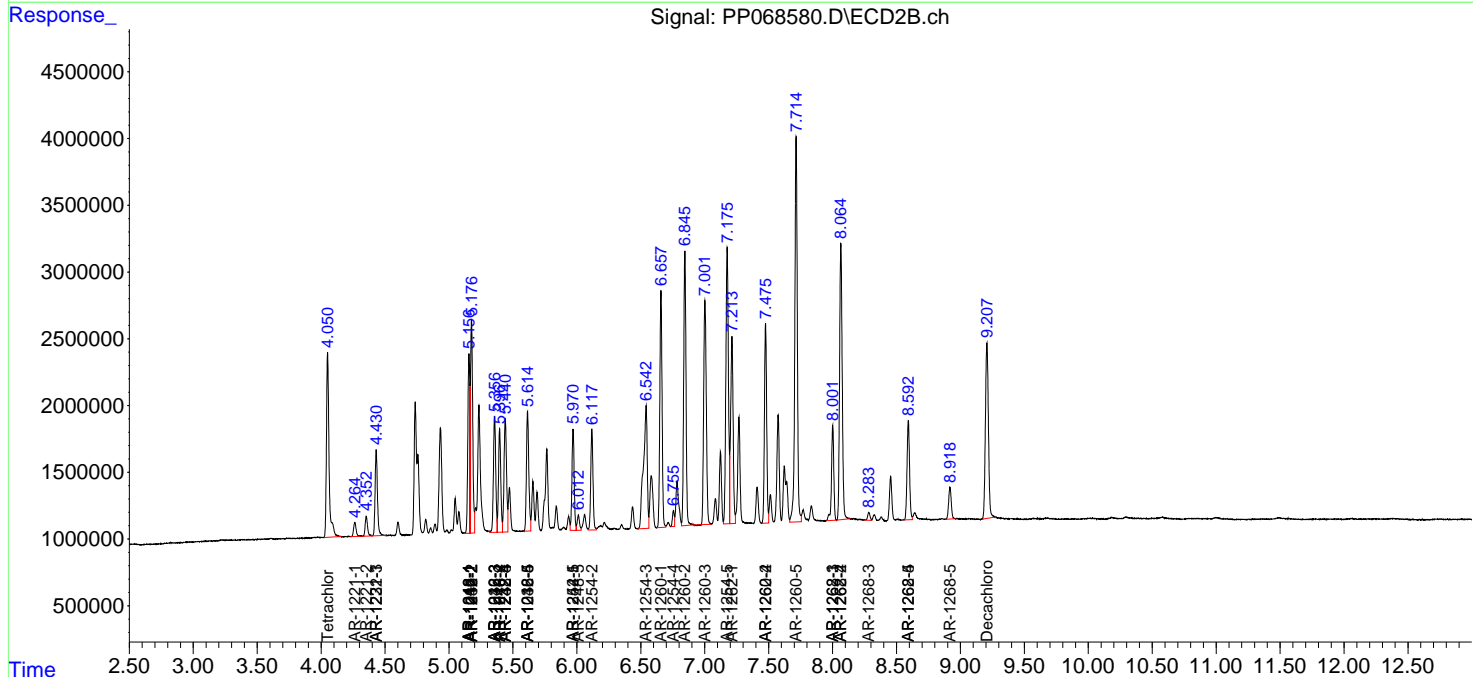
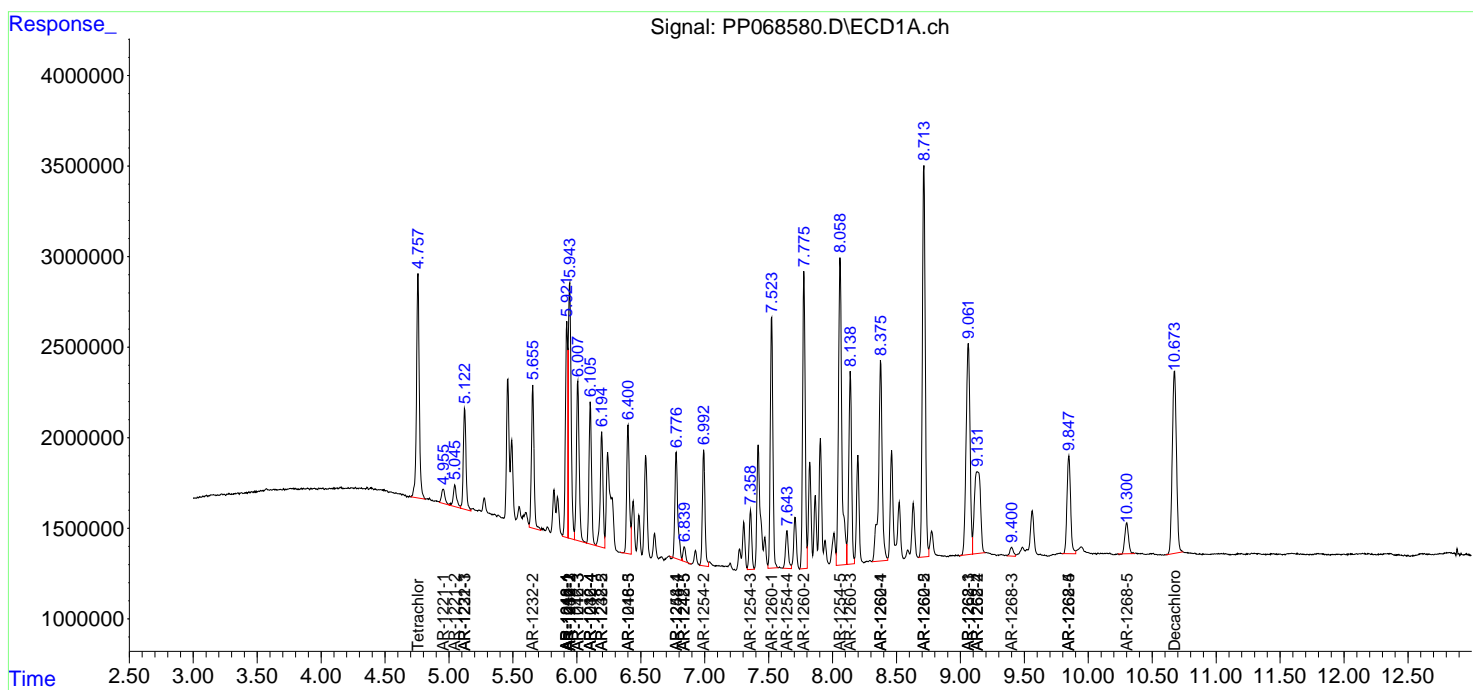
(f)=RT Delta > 1/2 Window (#)=Amounts differ by > 25% (m)=manual int.

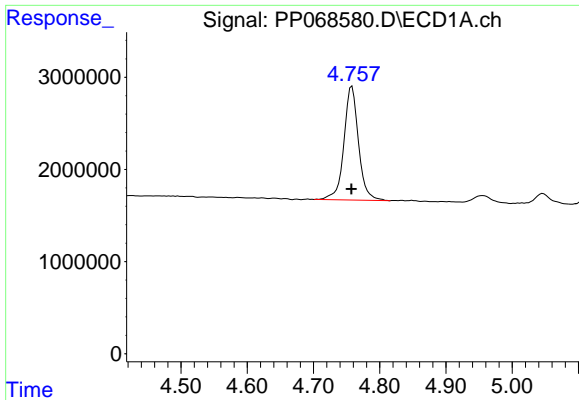
Data Path : Z:\pestpcbsrv\HPCHEM1\ECD\_P\Data\PP111824\  
 Data File : PP068580.D  
 Signal(s) : Signal #1: ECD1A.ch Signal #2: ECD2B.ch  
 Acq On : 19 Nov 2024 04:41  
 Operator : YP\AJ  
 Sample : P165038BS  
 Misc :  
 ALS Vial : 43 Sample Multiplier: 1

Instrument :  
 ECD\_P  
 ClientSampleId :  
 PB165038BS

Integration File signal 1: autoint1.e  
 Integration File signal 2: autoint2.e  
 Quant Time: Nov 19 06:11:33 2024  
 Quant Method : Z:\pestpcbsrv\HPCHEM1\ECD\_P\methods\PP110724.M  
 Quant Title : GC EXTRACTABLES  
 QLast Update : Fri Nov 08 11:04:08 2024  
 Response via : Initial Calibration  
 Integrator: ChemStation

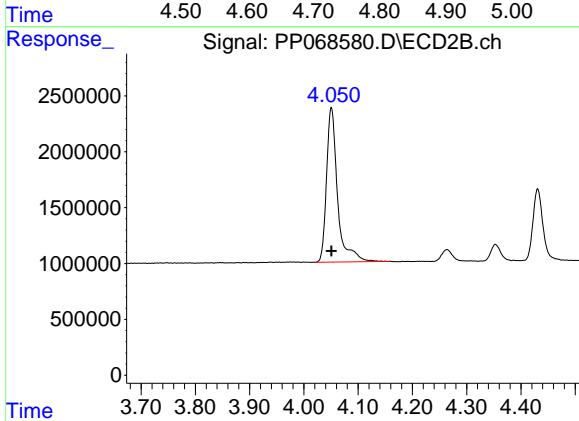
Volume Inj. : 2 µl  
 Signal #1 Phase : ZB-MR1 Signal #2 Phase: ZB-MR2  
 Signal #1 Info : 30Mx0.32mmx 0.50µ Signal #2 Info : 30M x 0.32mm x 0.25µm



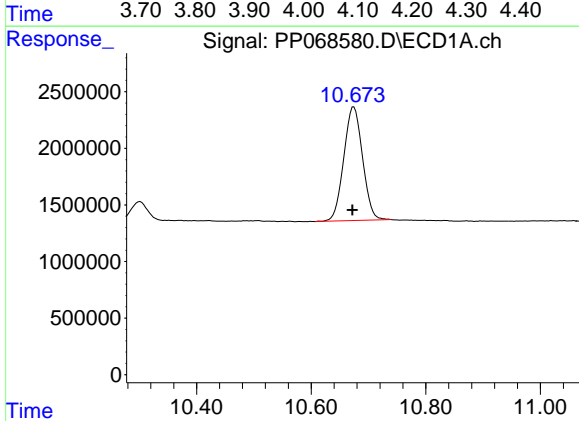


#1 Tetrachloro-m-xylene  
 R.T.: 4.758 min  
 Delta R.T.: 0.001 min  
 Response: 18924677  
 Conc: 19.50 ng/ml

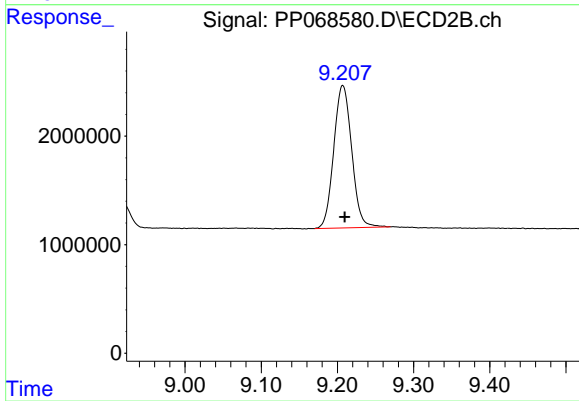
Instrument :  
 ECD\_P  
 ClientSampleId :  
 PB165038BS



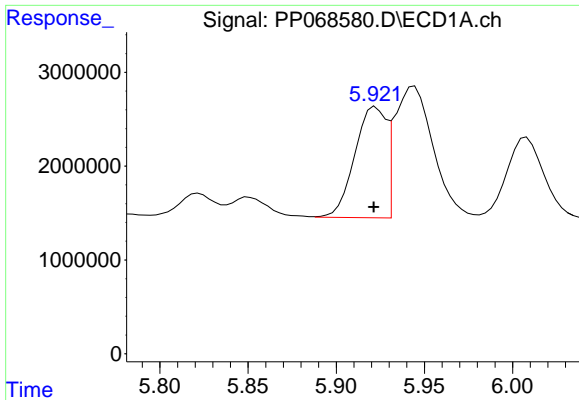
#1 Tetrachloro-m-xylene  
 R.T.: 4.051 min  
 Delta R.T.: 0.000 min  
 Response: 19529251  
 Conc: 20.17 ng/ml



#2 Decachlorobiphenyl  
 R.T.: 10.674 min  
 Delta R.T.: 0.002 min  
 Response: 22924014  
 Conc: 18.32 ng/ml



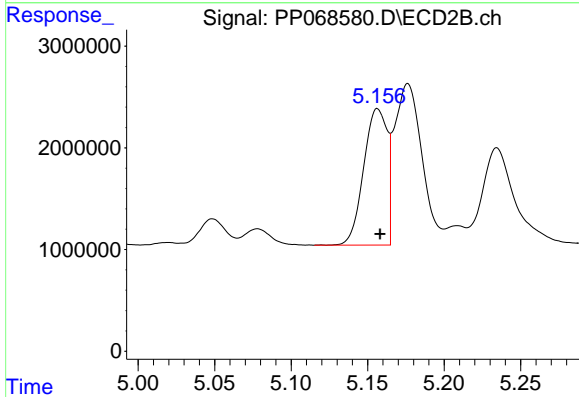
#2 Decachlorobiphenyl  
 R.T.: 9.207 min  
 Delta R.T.: -0.003 min  
 Response: 21479955  
 Conc: 18.99 ng/ml



#3 AR-1016-1

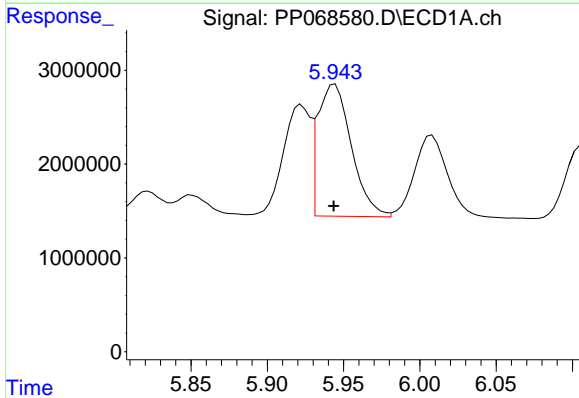
R.T.: 5.922 min  
 Delta R.T.: 0.001 min  
 Response: 14576955  
 Conc: 405.64 ng/ml

Instrument :  
 ECD\_P  
 ClientSampleId :  
 PB165038BS



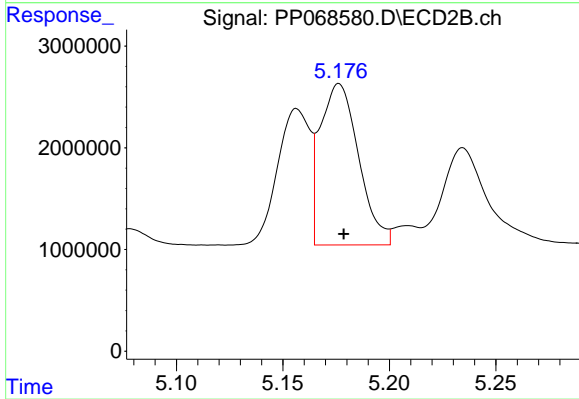
#3 AR-1016-1

R.T.: 5.157 min  
 Delta R.T.: -0.001 min  
 Response: 14254432  
 Conc: 431.34 ng/ml



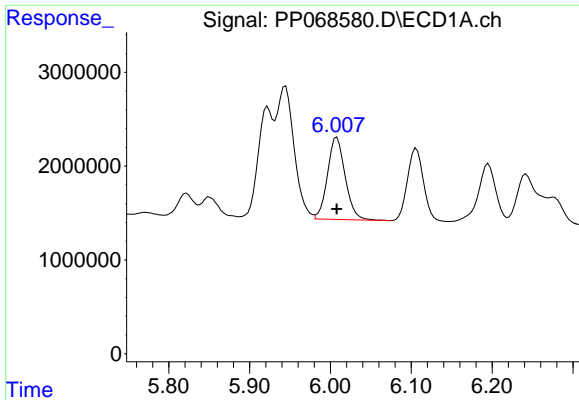
#4 AR-1016-2

R.T.: 5.944 min  
 Delta R.T.: 0.000 min  
 Response: 21593542  
 Conc: 407.81 ng/ml



#4 AR-1016-2

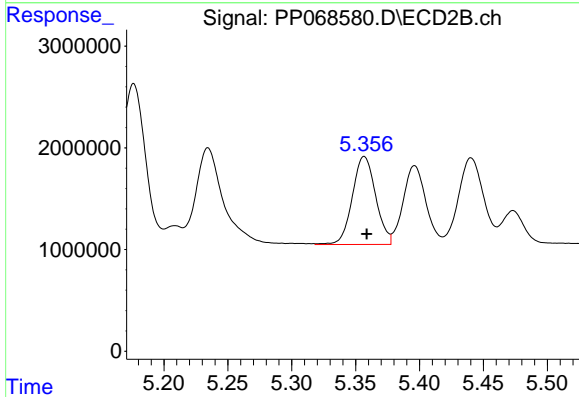
R.T.: 5.176 min  
 Delta R.T.: -0.002 min  
 Response: 19934726  
 Conc: 426.48 ng/ml



#5 AR-1016-3

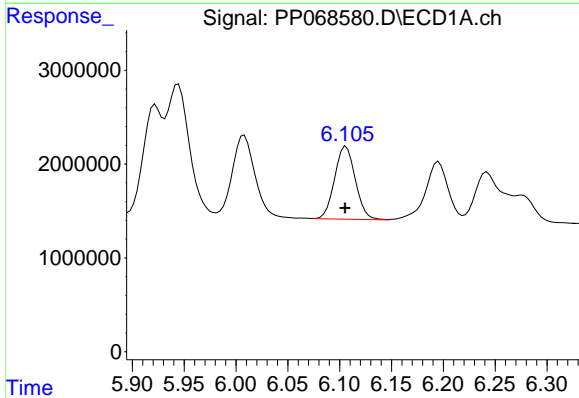
R.T.: 6.008 min  
 Delta R.T.: 0.000 min  
 Response: 13332904  
 Conc: 402.70 ng/ml

Instrument :  
 ECD\_P  
 ClientSampleId :  
 PB165038BS



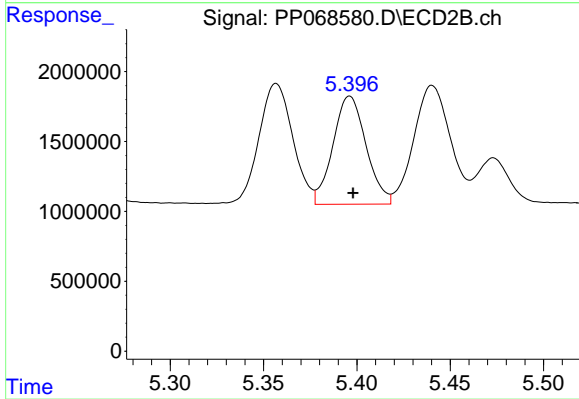
#5 AR-1016-3

R.T.: 5.357 min  
 Delta R.T.: -0.002 min  
 Response: 10999006  
 Conc: 406.76 ng/ml



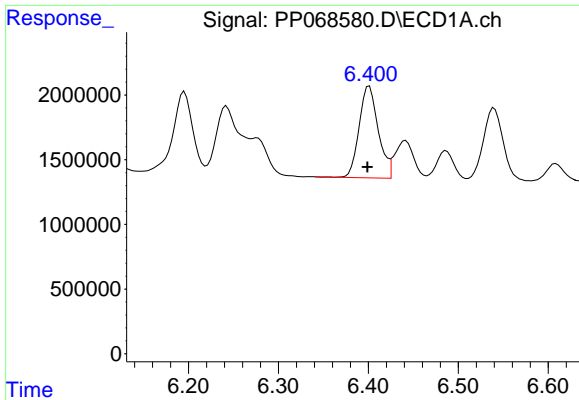
#6 AR-1016-4

R.T.: 6.106 min  
 Delta R.T.: 0.000 min  
 Response: 10787075  
 Conc: 410.43 ng/ml



#6 AR-1016-4

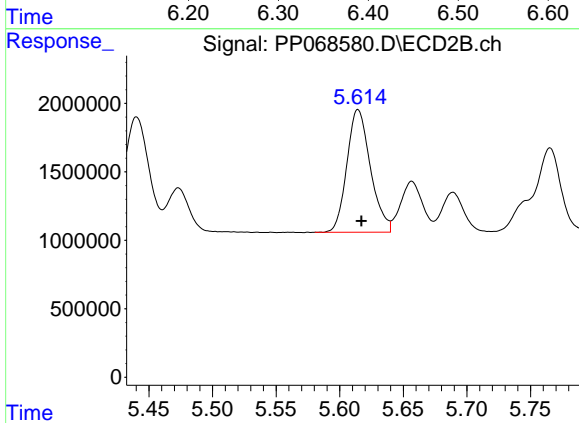
R.T.: 5.396 min  
 Delta R.T.: -0.002 min  
 Response: 9558933  
 Conc: 405.13 ng/ml



#7 AR-1016-5

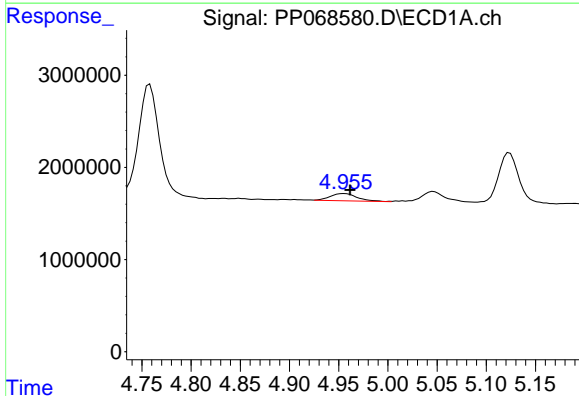
R.T.: 6.401 min  
 Delta R.T.: 0.002 min  
 Response: 10466591  
 Conc: 371.05 ng/ml

Instrument :  
 ECD\_P  
 ClientSampleId :  
 PB165038BS



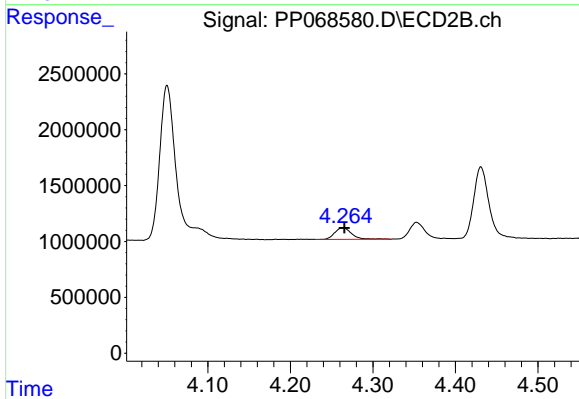
#7 AR-1016-5

R.T.: 5.615 min  
 Delta R.T.: -0.002 min  
 Response: 11541092  
 Conc: 389.35 ng/ml



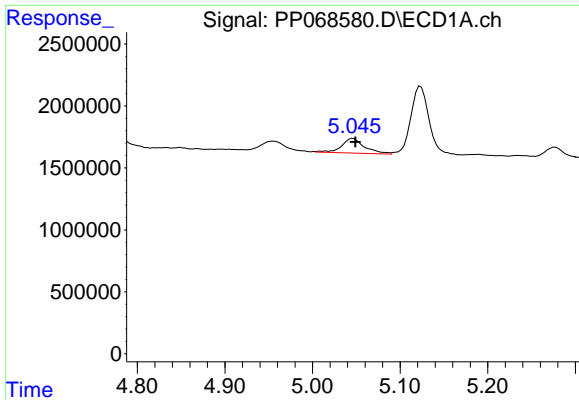
#8 AR-1221-1

R.T.: 4.956 min  
 Delta R.T.: -0.006 min  
 Response: 1494667  
 Conc: 110.21 ng/ml



#8 AR-1221-1

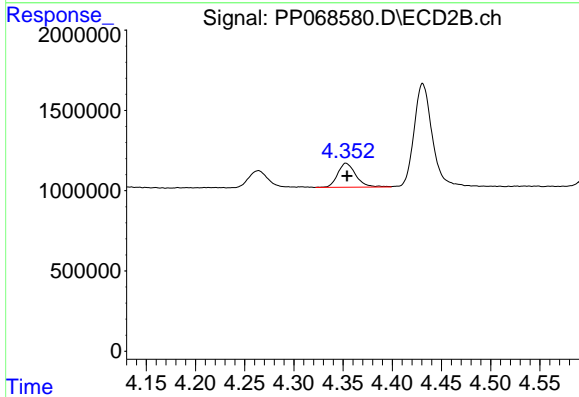
R.T.: 4.264 min  
 Delta R.T.: -0.002 min  
 Response: 1482350  
 Conc: 117.55 ng/ml



#9 AR-1221-2

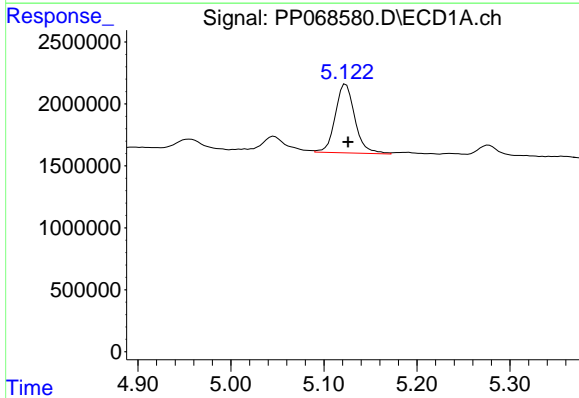
R.T.: 5.046 min  
 Delta R.T.: -0.003 min  
 Response: 2160412  
 Conc: 214.21 ng/ml

Instrument :  
 ECD\_P  
 ClientSampleId :  
 PB165038BS



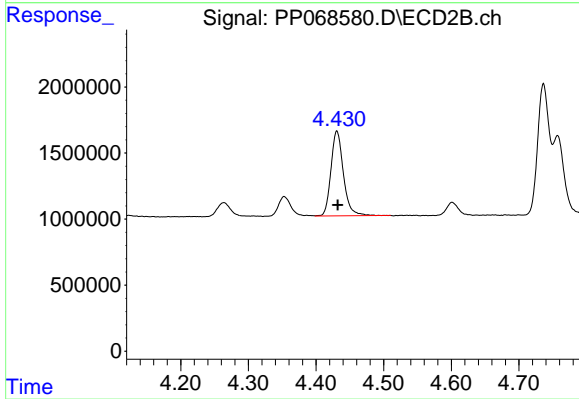
#9 AR-1221-2

R.T.: 4.353 min  
 Delta R.T.: 0.000 min  
 Response: 1928286  
 Conc: 197.31 ng/ml



#10 AR-1221-3

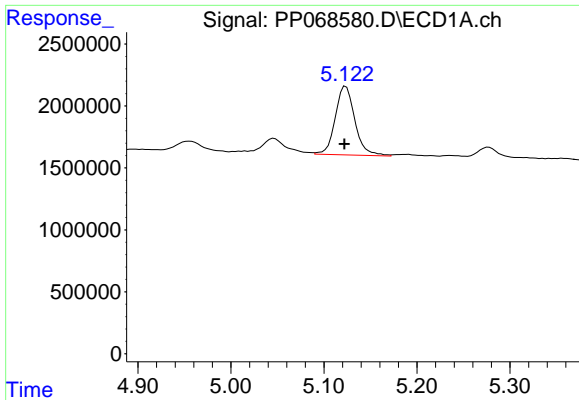
R.T.: 5.124 min  
 Delta R.T.: -0.002 min  
 Response: 8155767  
 Conc: 269.52 ng/ml



#10 AR-1221-3

R.T.: 4.431 min  
 Delta R.T.: -0.001 min  
 Response: 8206127  
 Conc: 269.13 ng/ml

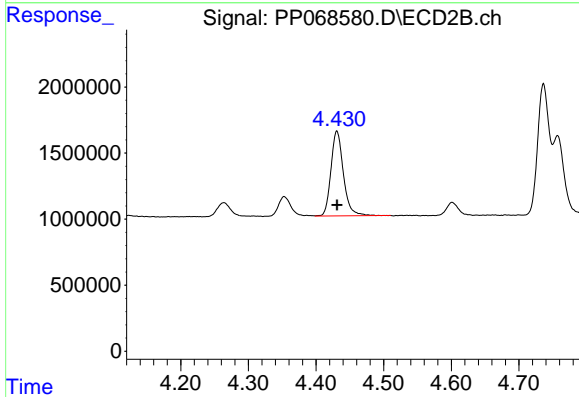




#11 AR-1232-1

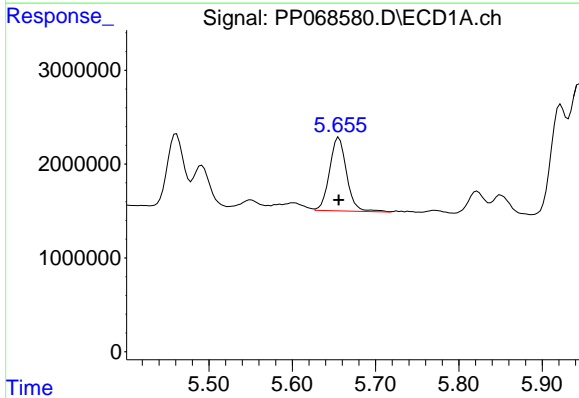
R.T.: 5.124 min  
 Delta R.T.: 0.001 min  
 Response: 8155767  
 Conc: 349.74 ng/ml

Instrument :  
 ECD\_P  
 ClientSampleId :  
 PB165038BS



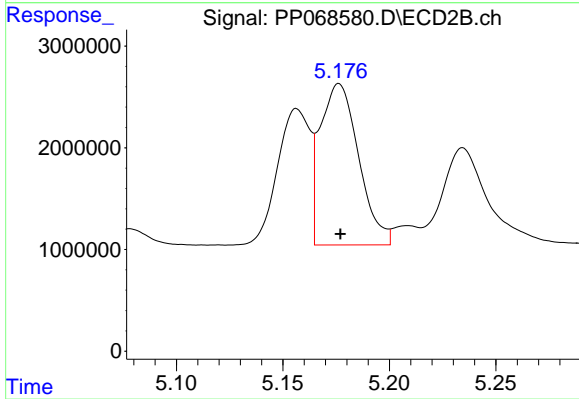
#11 AR-1232-1

R.T.: 4.431 min  
 Delta R.T.: 0.000 min  
 Response: 8206127  
 Conc: 347.69 ng/ml



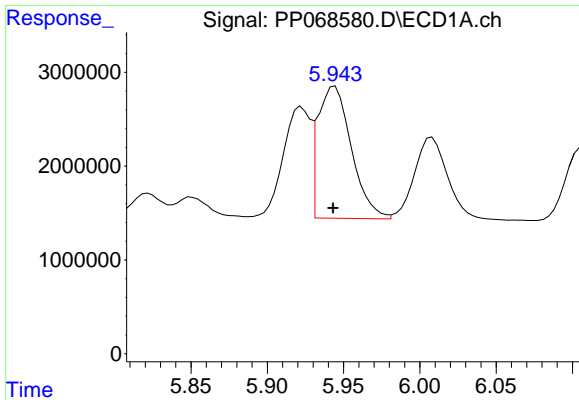
#12 AR-1232-2

R.T.: 5.656 min  
 Delta R.T.: 0.000 min  
 Response: 11181068  
 Conc: 747.66 ng/ml



#12 AR-1232-2

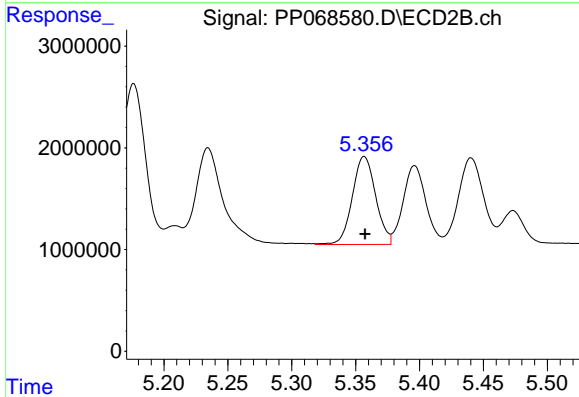
R.T.: 5.176 min  
 Delta R.T.: 0.000 min  
 Response: 19934726  
 Conc: 915.06 ng/ml



#13 AR-1232-3

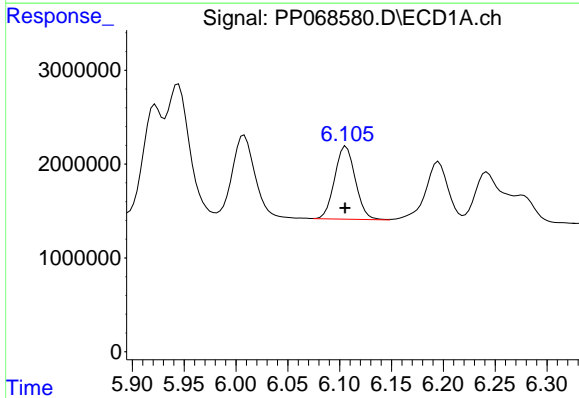
R.T.: 5.944 min  
 Delta R.T.: 0.001 min  
 Response: 21593542  
 Conc: 861.88 ng/ml

Instrument :  
 ECD\_P  
 ClientSampleId :  
 PB165038BS



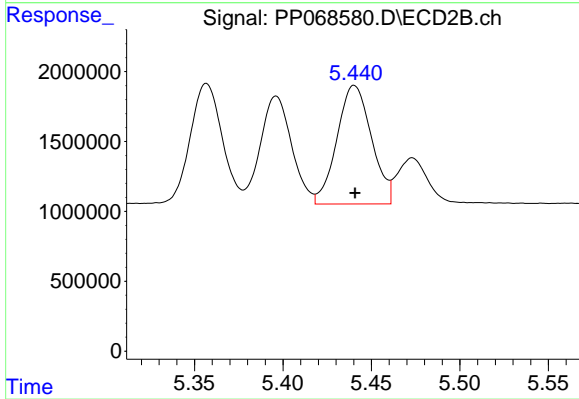
#13 AR-1232-3

R.T.: 5.357 min  
 Delta R.T.: 0.000 min  
 Response: 10999006  
 Conc: 981.12 ng/ml



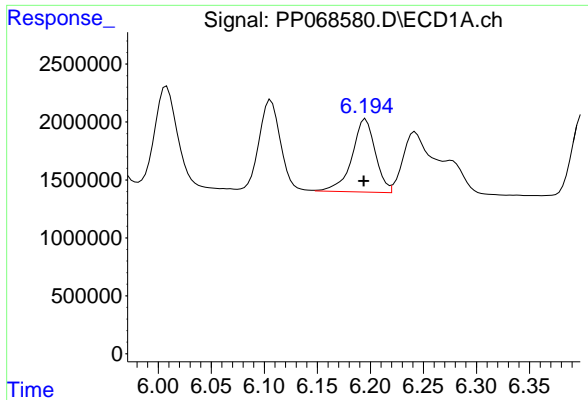
#14 AR-1232-4

R.T.: 6.106 min  
 Delta R.T.: 0.001 min  
 Response: 10787075  
 Conc: 871.46 ng/ml



#14 AR-1232-4

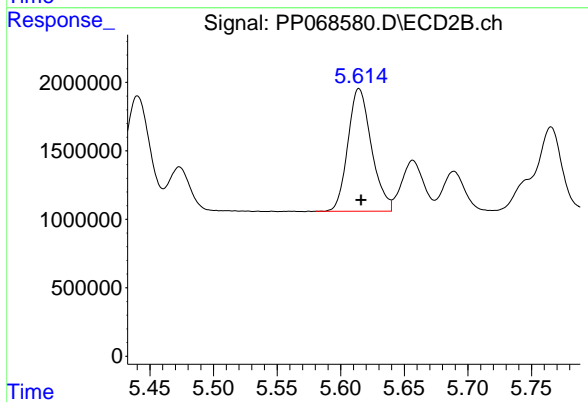
R.T.: 5.440 min  
 Delta R.T.: 0.000 min  
 Response: 11560138  
 Conc: 1055.09 ng/ml



#15 AR-1232-5

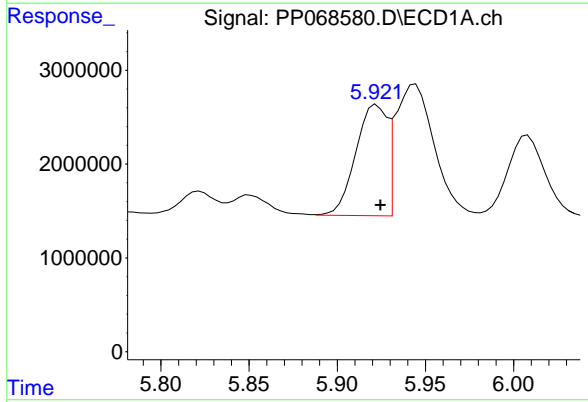
R.T.: 6.196 min  
 Delta R.T.: 0.002 min  
 Response: 9654317  
 Conc: 970.79 ng/ml

Instrument :  
 ECD\_P  
 ClientSampleId :  
 PB165038BS



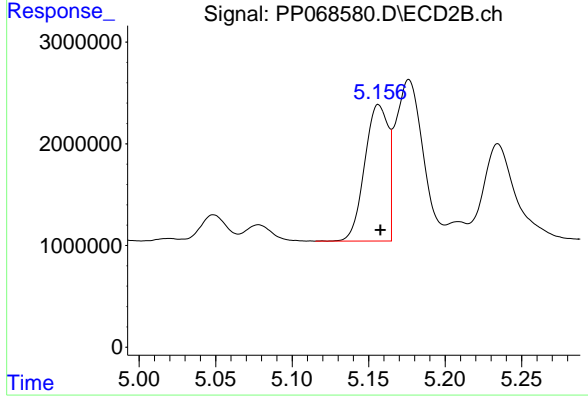
#15 AR-1232-5

R.T.: 5.615 min  
 Delta R.T.: -0.001 min  
 Response: 11541092  
 Conc: 936.77 ng/ml



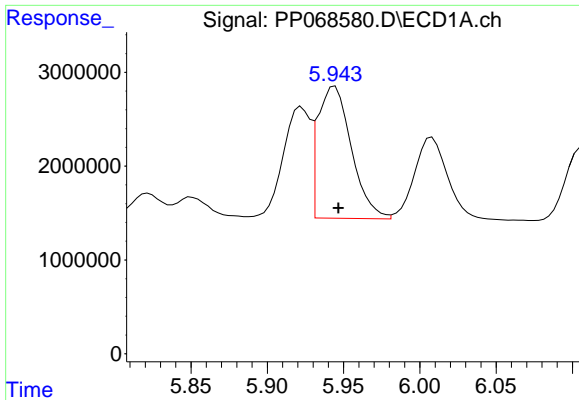
#16 AR-1242-1

R.T.: 5.922 min  
 Delta R.T.: -0.002 min  
 Response: 14576955  
 Conc: 487.96 ng/ml



#16 AR-1242-1

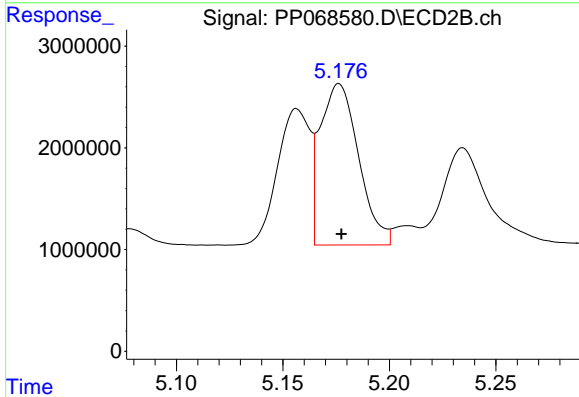
R.T.: 5.157 min  
 Delta R.T.: 0.000 min  
 Response: 14254432  
 Conc: 512.94 ng/ml



#17 AR-1242-2

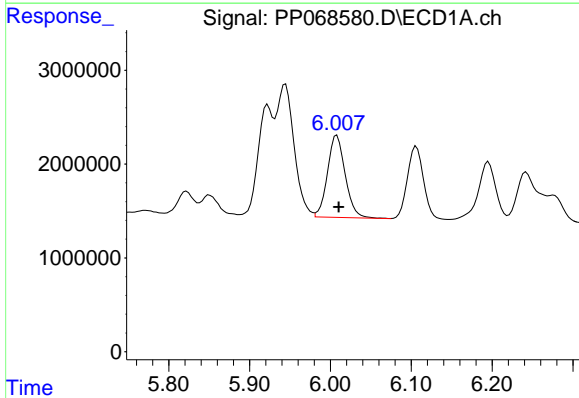
R.T.: 5.944 min  
 Delta R.T.: -0.002 min  
 Response: 21593542  
 Conc: 489.63 ng/ml

Instrument :  
 ECD\_P  
 ClientSampleId :  
 PB165038BS



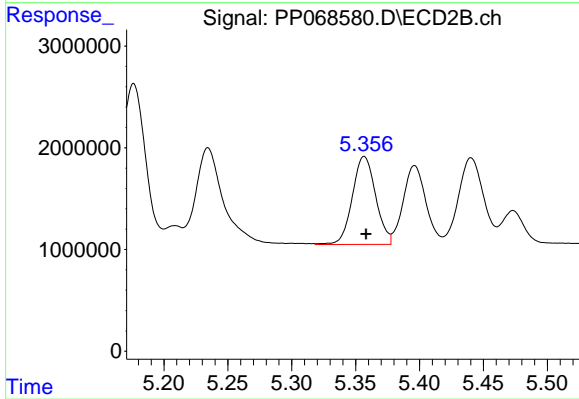
#17 AR-1242-2

R.T.: 5.176 min  
 Delta R.T.: -0.001 min  
 Response: 19934726  
 Conc: 516.11 ng/ml



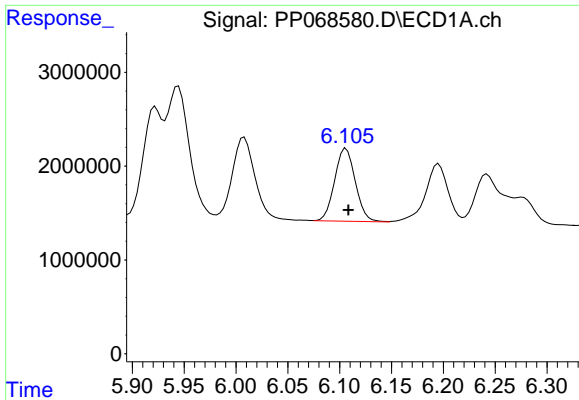
#18 AR-1242-3

R.T.: 6.008 min  
 Delta R.T.: -0.002 min  
 Response: 13332904  
 Conc: 478.59 ng/ml



#18 AR-1242-3

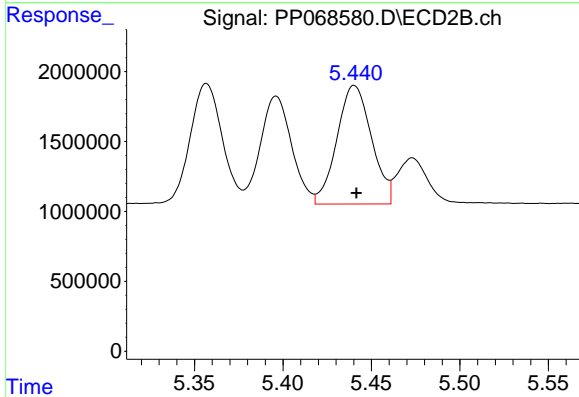
R.T.: 5.357 min  
 Delta R.T.: -0.001 min  
 Response: 10999006  
 Conc: 516.87 ng/ml



#19 AR-1242-4

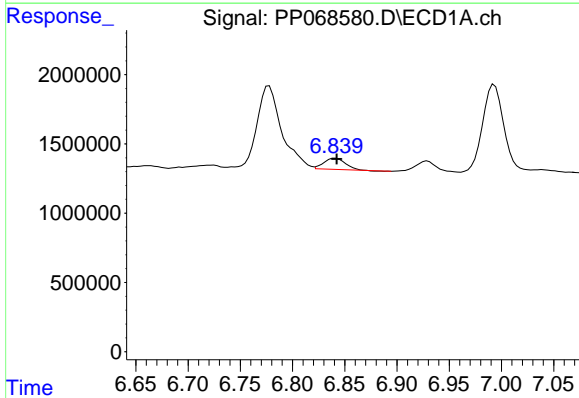
R.T.: 6.106 min  
 Delta R.T.: -0.002 min  
 Response: 10787075  
 Conc: 493.01 ng/ml

Instrument :  
 ECD\_P  
 ClientSampleId :  
 PB165038BS



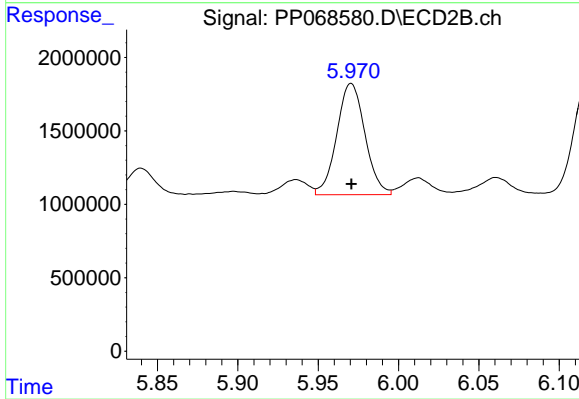
#19 AR-1242-4

R.T.: 5.440 min  
 Delta R.T.: -0.001 min  
 Response: 11560138  
 Conc: 507.16 ng/ml



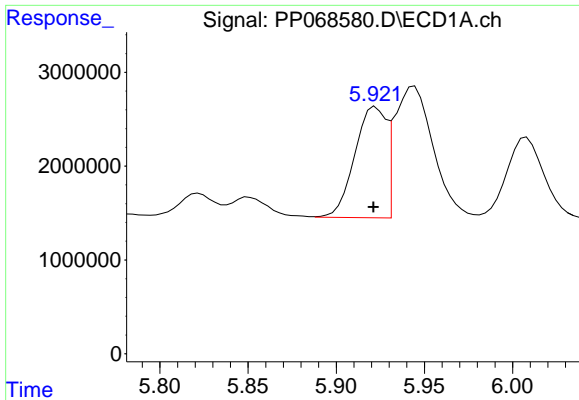
#20 AR-1242-5

R.T.: 6.841 min  
 Delta R.T.: -0.001 min  
 Response: 1152418  
 Conc: 47.46 ng/ml



#20 AR-1242-5

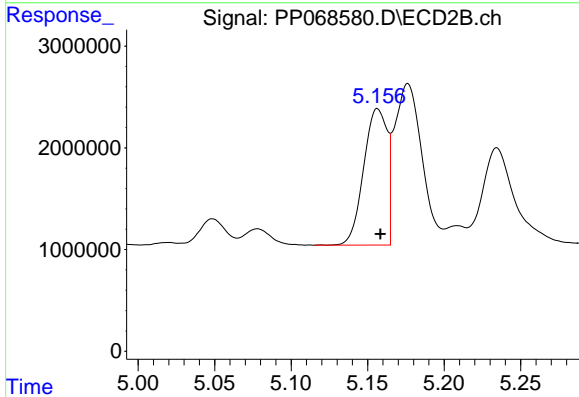
R.T.: 5.971 min  
 Delta R.T.: 0.000 min  
 Response: 9258106  
 Conc: 337.26 ng/ml



#21 AR-1248-1

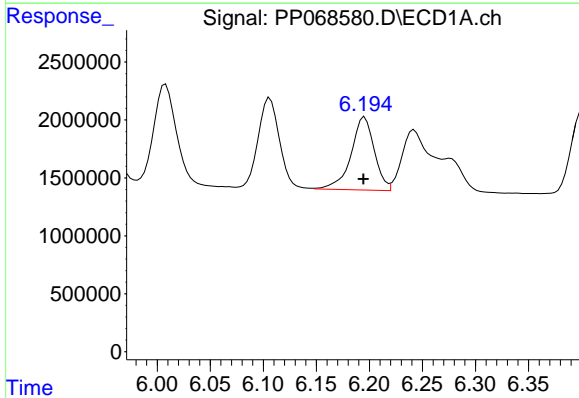
R.T.: 5.922 min  
 Delta R.T.: 0.001 min  
 Response: 14576955  
 Conc: 646.01 ng/ml

Instrument :  
 ECD\_P  
 ClientSampleId :  
 PB165038BS



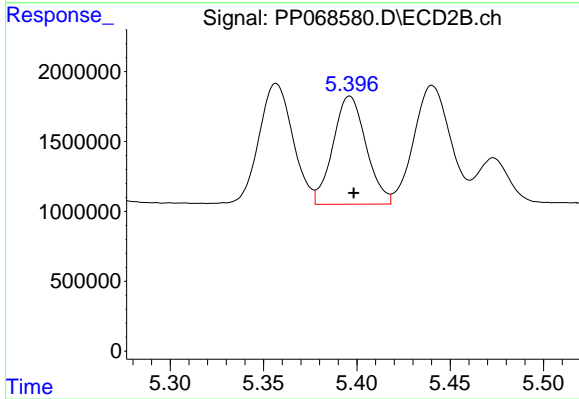
#21 AR-1248-1

R.T.: 5.157 min  
 Delta R.T.: -0.001 min  
 Response: 14254432  
 Conc: 652.45 ng/ml



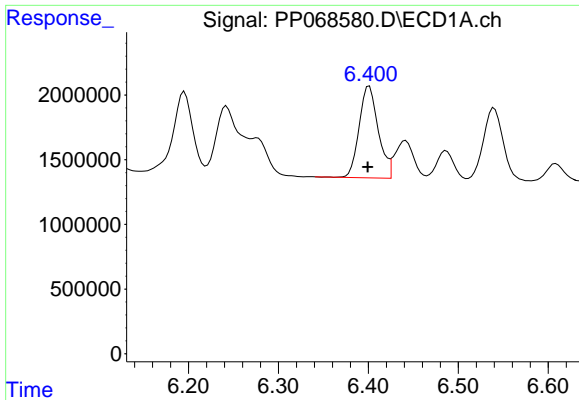
#22 AR-1248-2

R.T.: 6.196 min  
 Delta R.T.: 0.001 min  
 Response: 9654317  
 Conc: 287.24 ng/ml



#22 AR-1248-2

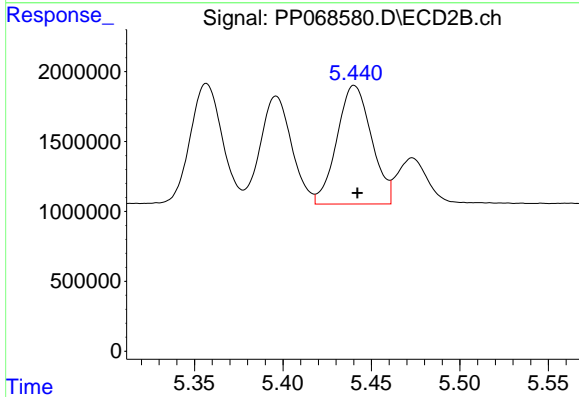
R.T.: 5.396 min  
 Delta R.T.: -0.002 min  
 Response: 9558933  
 Conc: 299.01 ng/ml



#23 AR-1248-3

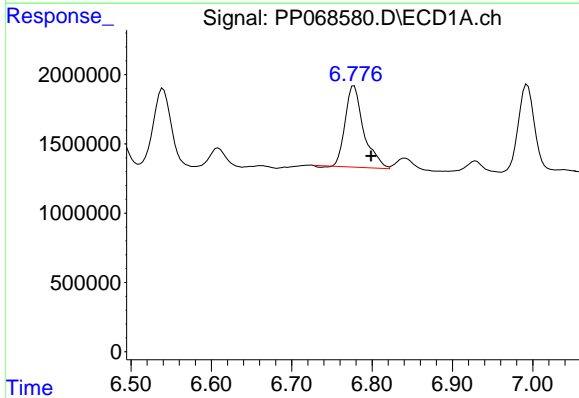
R.T.: 6.401 min  
 Delta R.T.: 0.002 min  
 Response: 10466591  
 Conc: 286.63 ng/ml

Instrument :  
 ECD\_P  
 ClientSampleId :  
 PB165038BS



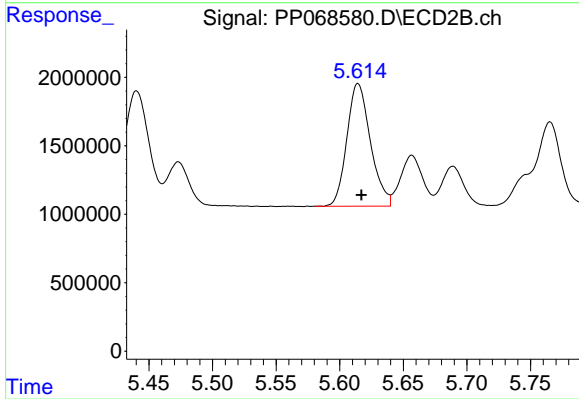
#23 AR-1248-3

R.T.: 5.440 min  
 Delta R.T.: -0.002 min  
 Response: 11560138  
 Conc: 344.99 ng/ml



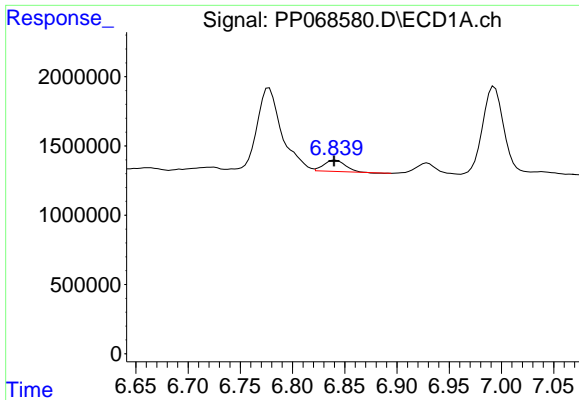
#24 AR-1248-4

R.T.: 6.778 min  
 Delta R.T.: -0.021 min  
 Response: 9320234  
 Conc: 217.84 ng/ml



#24 AR-1248-4

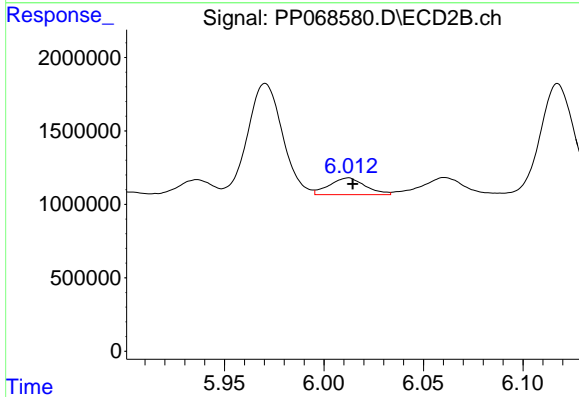
R.T.: 5.615 min  
 Delta R.T.: -0.002 min  
 Response: 11541092  
 Conc: 297.23 ng/ml



#25 AR-1248-5

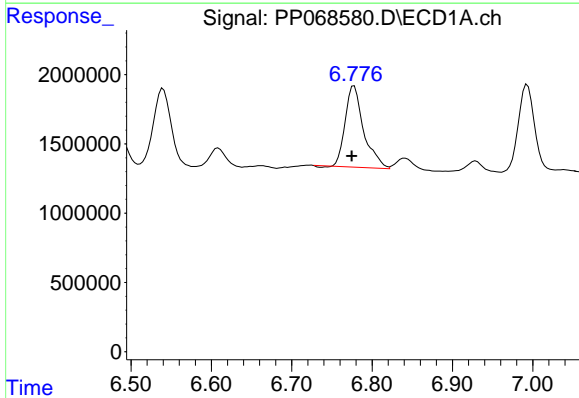
R.T.: 6.841 min  
 Delta R.T.: 0.001 min  
 Response: 1152418  
 Conc: 27.74 ng/ml

Instrument :  
 ECD\_P  
 ClientSampleId :  
 PB165038BS



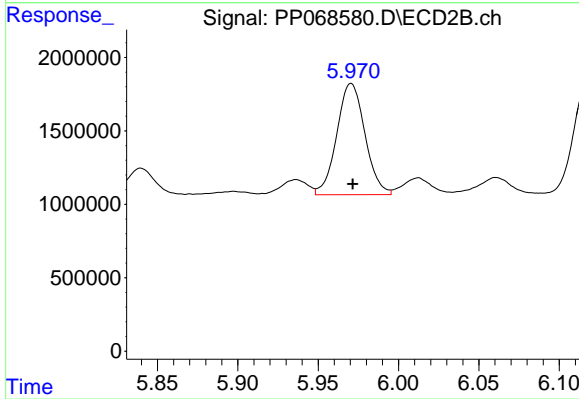
#25 AR-1248-5

R.T.: 6.012 min  
 Delta R.T.: -0.003 min  
 Response: 1431659  
 Conc: 38.62 ng/ml



#26 AR-1254-1

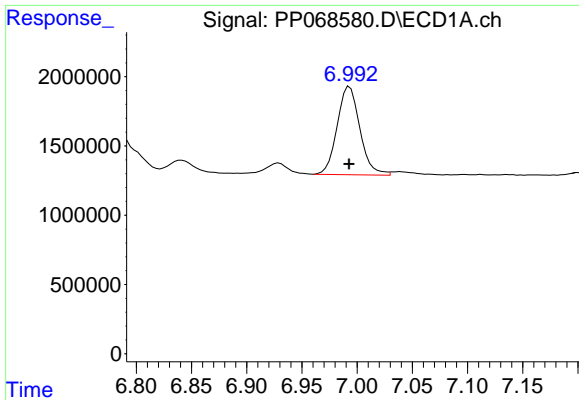
R.T.: 6.778 min  
 Delta R.T.: 0.003 min  
 Response: 9320234  
 Conc: 179.63 ng/ml



#26 AR-1254-1

R.T.: 5.971 min  
 Delta R.T.: 0.000 min  
 Response: 9258106  
 Conc: 152.67 ng/ml

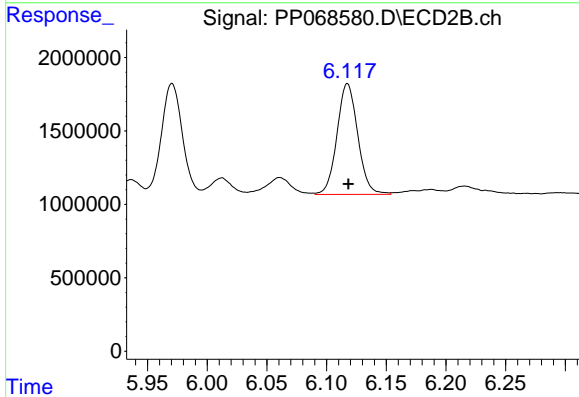




#27 AR-1254-2

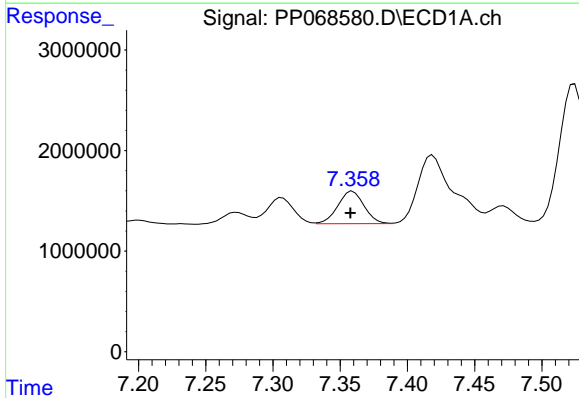
R.T.: 6.993 min  
 Delta R.T.: 0.000 min  
 Response: 9097527  
 Conc: 133.32 ng/ml

Instrument :  
 ECD\_P  
 ClientSampleId :  
 PB165038BS



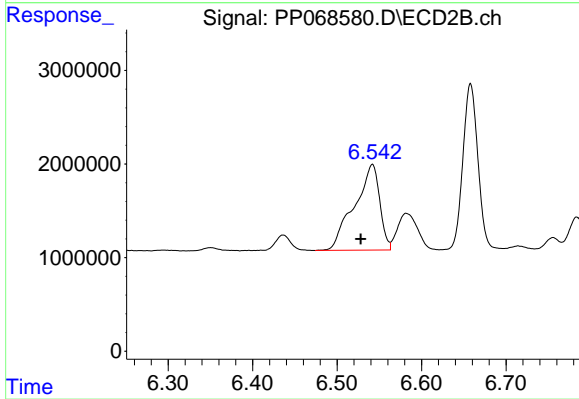
#27 AR-1254-2

R.T.: 6.118 min  
 Delta R.T.: 0.000 min  
 Response: 9145493  
 Conc: 173.42 ng/ml



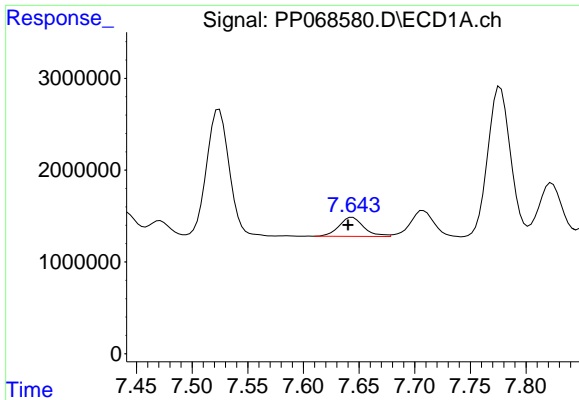
#28 AR-1254-3

R.T.: 7.359 min  
 Delta R.T.: 0.002 min  
 Response: 4375946  
 Conc: 61.24 ng/ml



#28 AR-1254-3

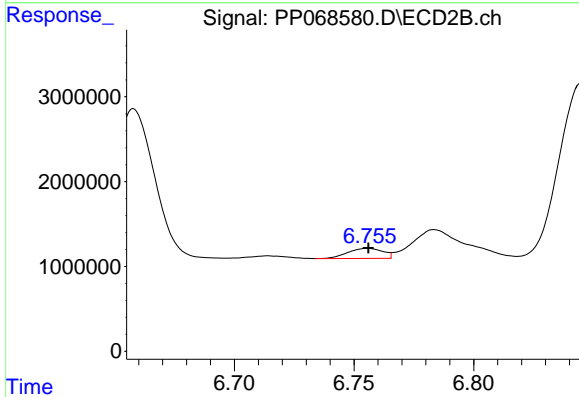
R.T.: 6.541 min  
 Delta R.T.: 0.013 min  
 Response: 19038195  
 Conc: 228.66 ng/ml



#29 AR-1254-4

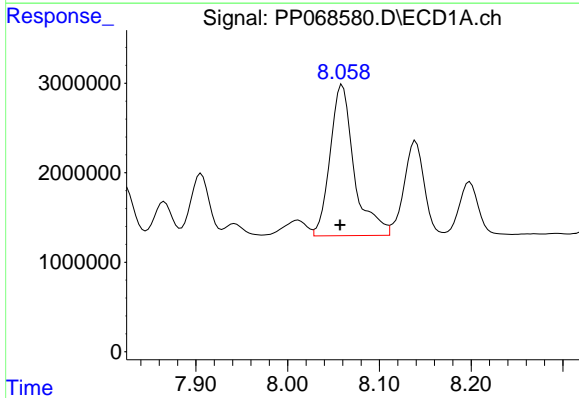
R.T.: 7.644 min  
 Delta R.T.: 0.004 min  
 Response: 3196713  
 Conc: 59.40 ng/ml

Instrument :  
 ECD\_P  
 ClientSampleId :  
 PB165038BS



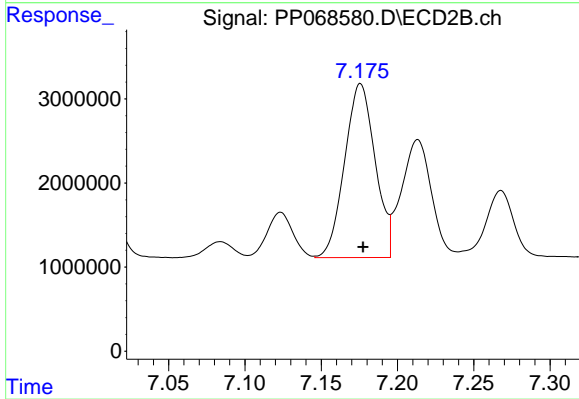
#29 AR-1254-4

R.T.: 6.756 min  
 Delta R.T.: 0.000 min  
 Response: 1218292  
 Conc: 25.05 ng/ml



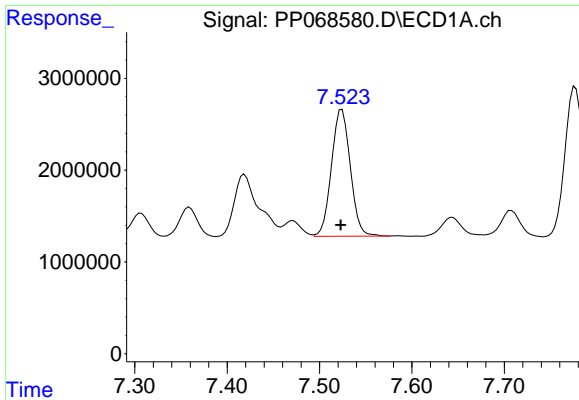
#30 AR-1254-5

R.T.: 8.060 min  
 Delta R.T.: 0.002 min  
 Response: 30819930  
 Conc: 491.81 ng/ml



#30 AR-1254-5

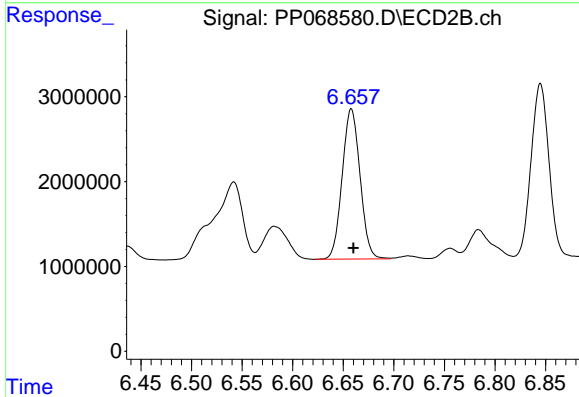
R.T.: 7.176 min  
 Delta R.T.: -0.002 min  
 Response: 28760242  
 Conc: 385.35 ng/ml



#31 AR-1260-1

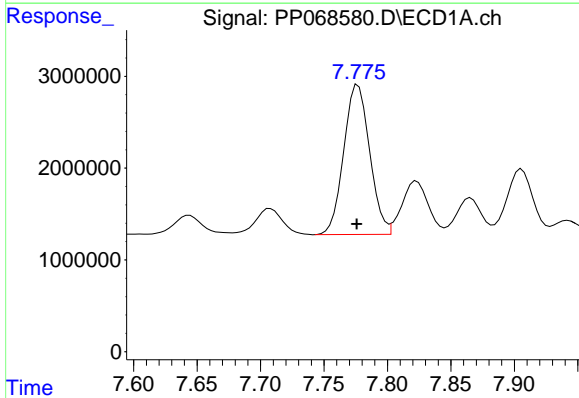
R.T.: 7.524 min  
 Delta R.T.: 0.001 min  
 Response: 19598911  
 Conc: 362.24 ng/ml

Instrument :  
 ECD\_P  
 ClientSampleId :  
 PB165038BS



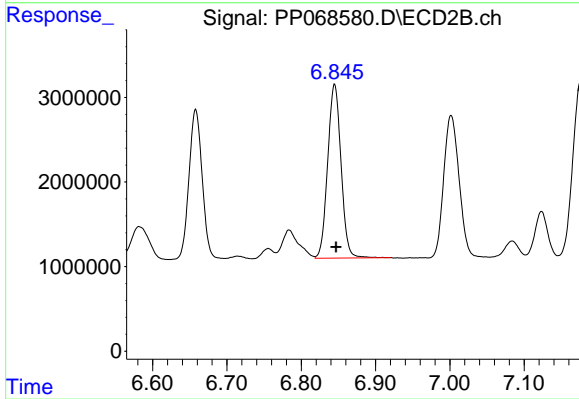
#31 AR-1260-1

R.T.: 6.658 min  
 Delta R.T.: -0.002 min  
 Response: 21795923  
 Conc: 391.67 ng/ml



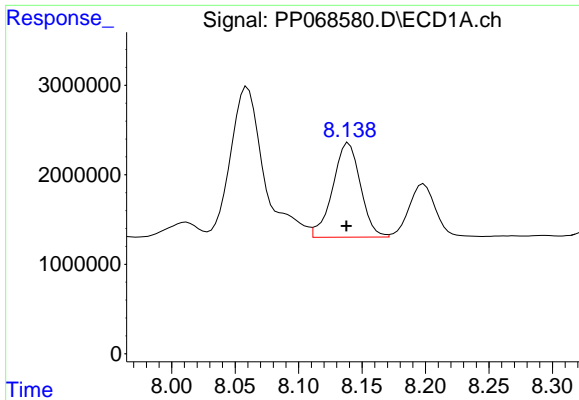
#32 AR-1260-2

R.T.: 7.777 min  
 Delta R.T.: 0.001 min  
 Response: 23188729  
 Conc: 364.54 ng/ml



#32 AR-1260-2

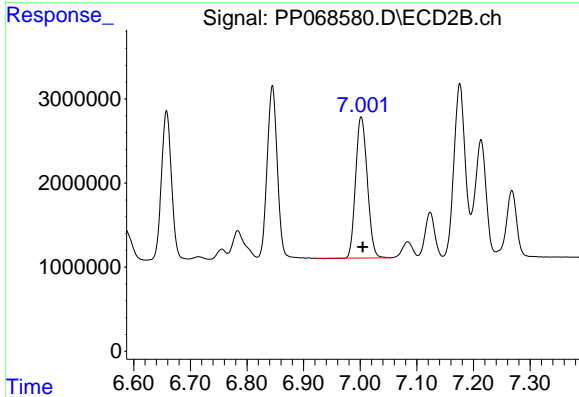
R.T.: 6.845 min  
 Delta R.T.: -0.002 min  
 Response: 25640565  
 Conc: 387.11 ng/ml



#33 AR-1260-3

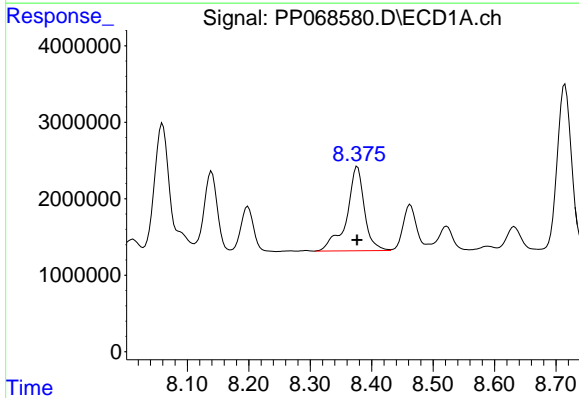
R.T.: 8.139 min  
 Delta R.T.: 0.002 min  
 Response: 16074225  
 Conc: 298.82 ng/ml

Instrument :  
 ECD\_P  
 ClientSampleId :  
 PB165038BS



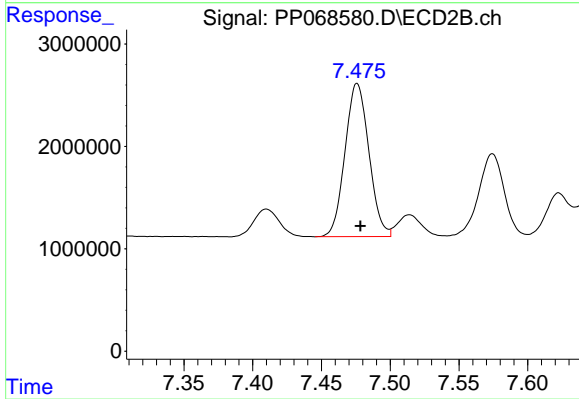
#33 AR-1260-3

R.T.: 7.002 min  
 Delta R.T.: -0.003 min  
 Response: 23990862  
 Conc: 387.63 ng/ml



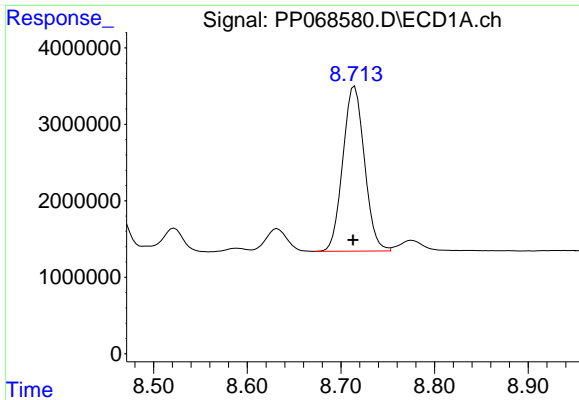
#34 AR-1260-4

R.T.: 8.377 min  
 Delta R.T.: 0.000 min  
 Response: 22090704  
 Conc: 355.00 ng/ml



#34 AR-1260-4

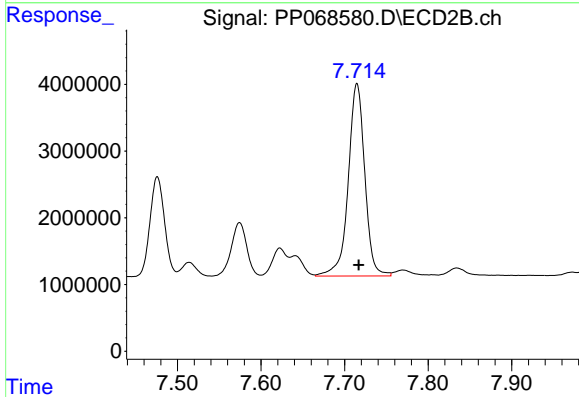
R.T.: 7.476 min  
 Delta R.T.: -0.002 min  
 Response: 18109731  
 Conc: 343.40 ng/ml



#35 AR-1260-5

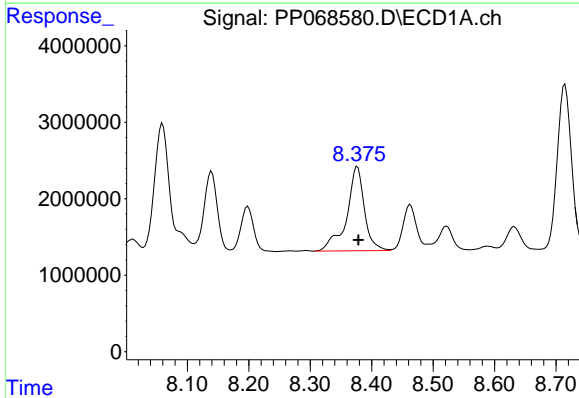
R.T.: 8.715 min  
 Delta R.T.: 0.002 min  
 Response: 34603562  
 Conc: 305.73 ng/ml

Instrument :  
 ECD\_P  
 ClientSampleId :  
 PB165038BS



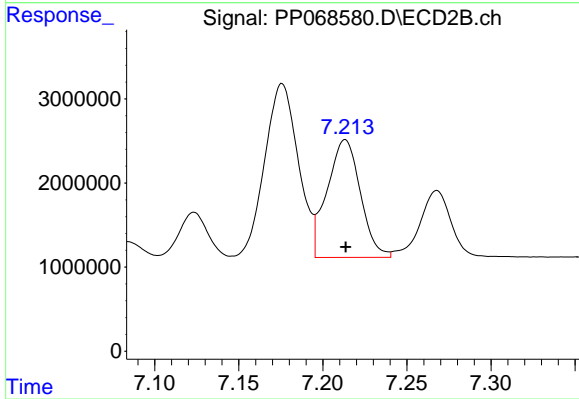
#35 AR-1260-5

R.T.: 7.715 min  
 Delta R.T.: -0.002 min  
 Response: 39631207  
 Conc: 332.82 ng/ml



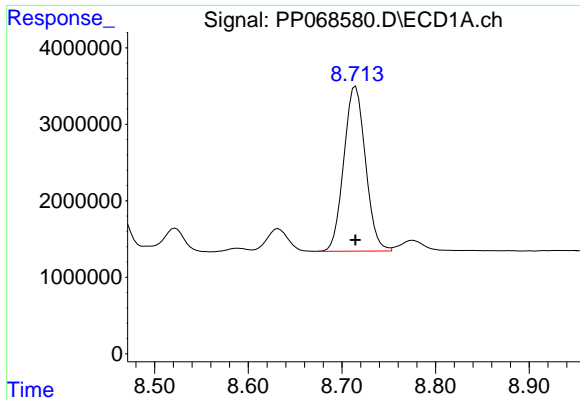
#36 AR-1262-1

R.T.: 8.377 min  
 Delta R.T.: -0.002 min  
 Response: 22090704  
 Conc: 297.99 ng/ml



#36 AR-1262-1

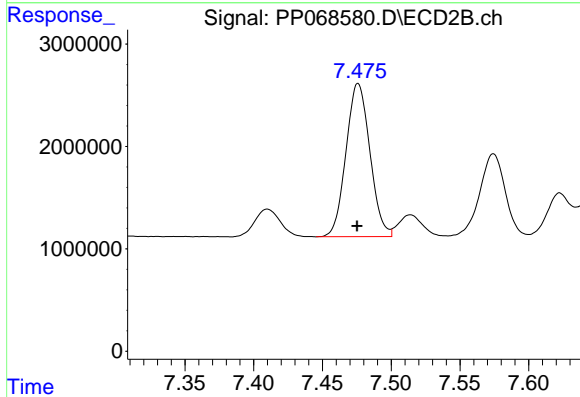
R.T.: 7.213 min  
 Delta R.T.: 0.000 min  
 Response: 19256984  
 Conc: 248.17 ng/ml



#37 AR-1262-2

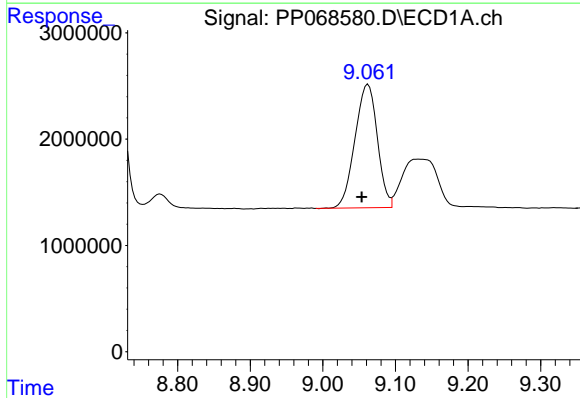
R.T.: 8.715 min  
 Delta R.T.: 0.000 min  
 Response: 34603562  
 Conc: 268.25 ng/ml

Instrument :  
 ECD\_P  
 ClientSampleId :  
 PB165038BS



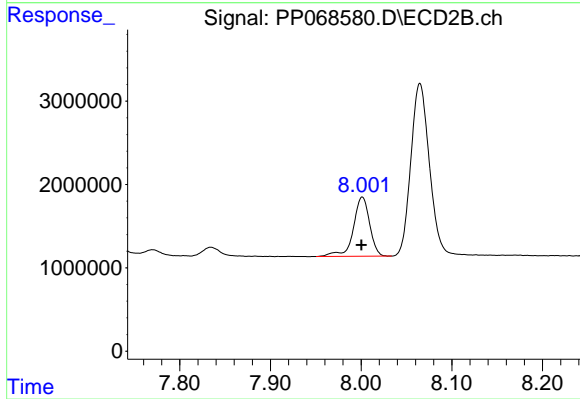
#37 AR-1262-2

R.T.: 7.476 min  
 Delta R.T.: 0.000 min  
 Response: 18109731  
 Conc: 256.17 ng/ml



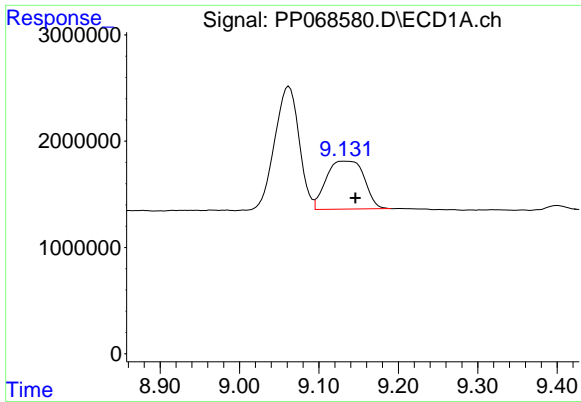
#38 AR-1262-3

R.T.: 9.062 min  
 Delta R.T.: 0.009 min  
 Response: 24793567  
 Conc: 259.13 ng/ml



#38 AR-1262-3

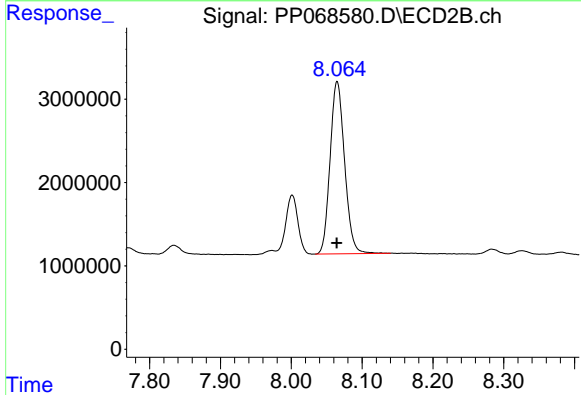
R.T.: 8.001 min  
 Delta R.T.: 0.000 min  
 Response: 8849656  
 Conc: 150.38 ng/ml



#39 AR-1262-4

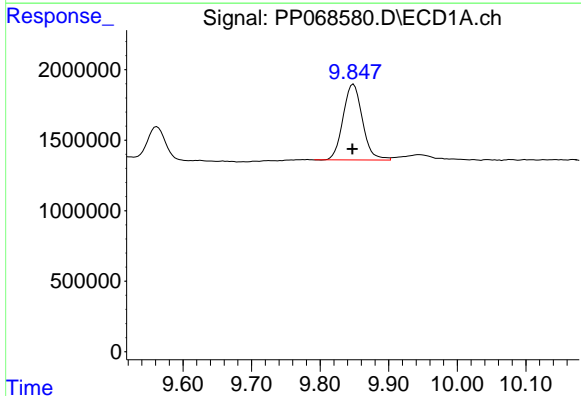
R.T.: 9.133 min  
 Delta R.T.: -0.013 min  
 Response: 14994980  
 Conc: 196.30 ng/ml

Instrument :  
 ECD\_P  
 ClientSampleId :  
 PB165038BS



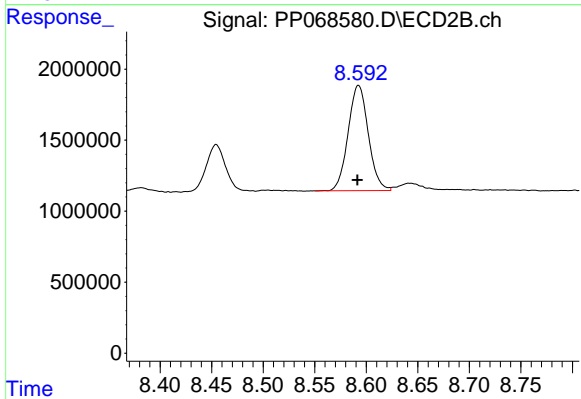
#39 AR-1262-4

R.T.: 8.065 min  
 Delta R.T.: 0.000 min  
 Response: 29398280  
 Conc: 283.76 ng/ml



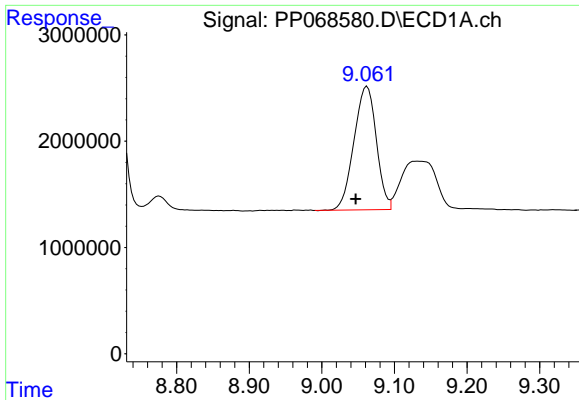
#40 AR-1262-5

R.T.: 9.849 min  
 Delta R.T.: 0.002 min  
 Response: 10540849  
 Conc: 197.09 ng/ml



#40 AR-1262-5

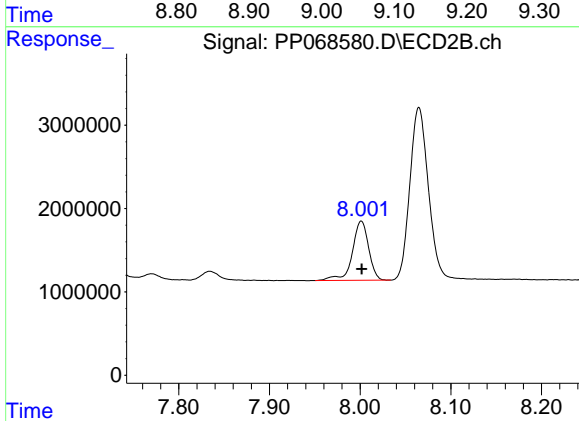
R.T.: 8.592 min  
 Delta R.T.: 0.001 min  
 Response: 10123382  
 Conc: 199.71 ng/ml



#41 AR-1268-1

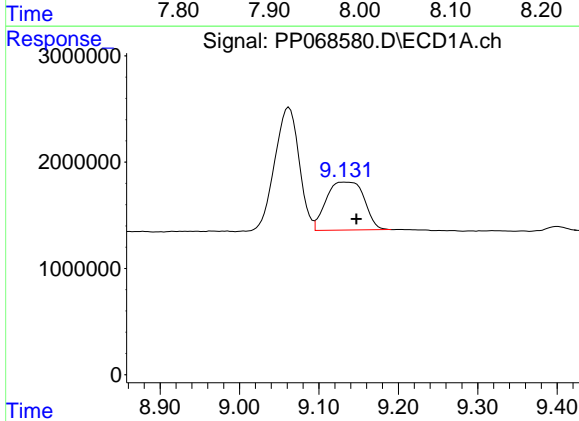
R.T.: 9.062 min  
 Delta R.T.: 0.016 min  
 Response: 24793567  
 Conc: 160.69 ng/ml

Instrument :  
 ECD\_P  
 ClientSampleId :  
 PB165038BS



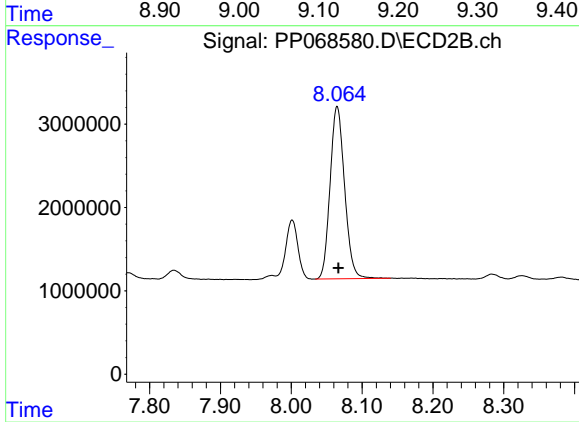
#41 AR-1268-1

R.T.: 8.001 min  
 Delta R.T.: 0.000 min  
 Response: 8849656  
 Conc: 56.83 ng/ml



#42 AR-1268-2

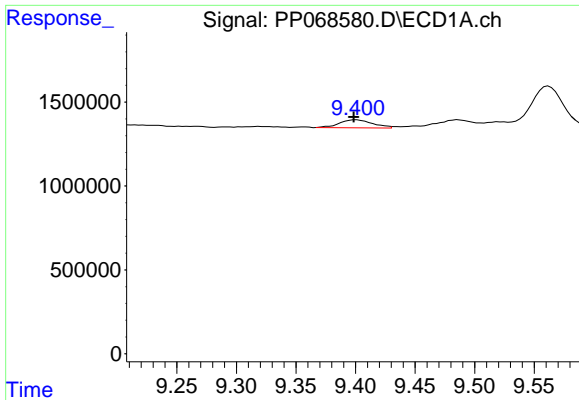
R.T.: 9.133 min  
 Delta R.T.: -0.015 min  
 Response: 14994980  
 Conc: 107.12 ng/ml



#42 AR-1268-2

R.T.: 8.065 min  
 Delta R.T.: -0.002 min  
 Response: 29398280  
 Conc: 207.68 ng/ml

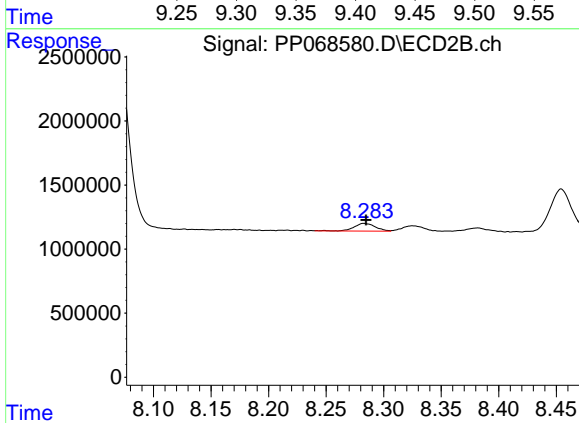




#43 AR-1268-3

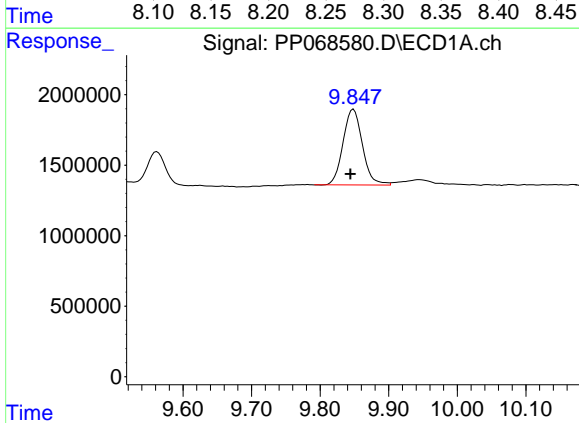
R.T.: 9.401 min  
 Delta R.T.: 0.002 min  
 Response: 917838  
 Conc: 7.30 ng/ml

Instrument :  
 ECD\_P  
 ClientSampleId :  
 PB165038BS



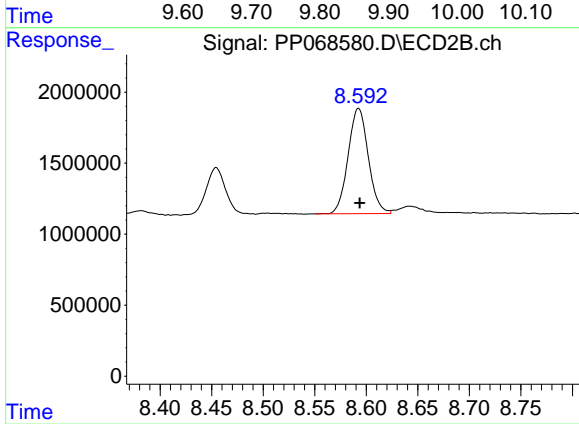
#43 AR-1268-3

R.T.: 8.284 min  
 Delta R.T.: -0.001 min  
 Response: 787263  
 Conc: 6.32 ng/ml



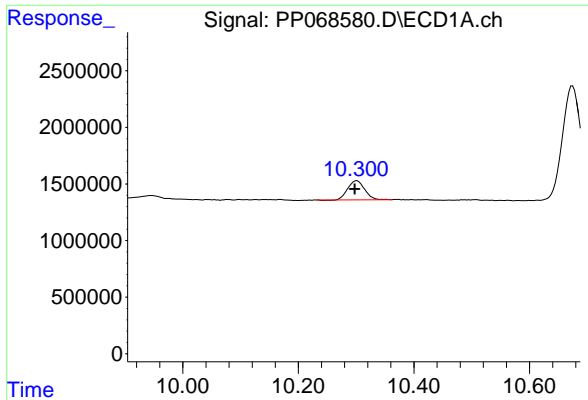
#44 AR-1268-4

R.T.: 9.849 min  
 Delta R.T.: 0.004 min  
 Response: 10540849  
 Conc: 197.26 ng/ml



#44 AR-1268-4

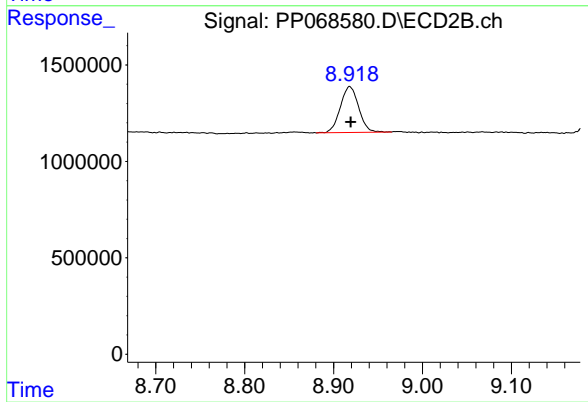
R.T.: 8.592 min  
 Delta R.T.: 0.000 min  
 Response: 10123382  
 Conc: 185.40 ng/ml



#45 AR-1268-5

R.T.: 10.301 min  
Delta R.T.: 0.004 min  
Response: 3398278  
Conc: 8.56 ng/ml

Instrument :  
ECD\_P  
ClientSampleId :  
PB165038BS



#45 AR-1268-5

R.T.: 8.918 min  
Delta R.T.: -0.001 min  
Response: 3401520  
Conc: 9.03 ng/ml