

Data Path : Z:\pestpcbsrv\HPCHEM1\ECD_P\Data\PP111921\
 Data File : PP041130.D
 Signal(s) : Signal #1: ECD1A.CH Signal #2: ECD2B.CH
 Acq On : 19 Nov 2021 20:18
 Operator : AJ\MA
 Sample : M4758-03
 Misc :
 ALS Vial : 30 Sample Multiplier: 1

Instrument :
 ECD_P
 ClientSampleId :
 TP2

Integration File signal 1: autoint1.e
 Integration File signal 2: autoint2.e
 Quant Time: Nov 22 01:24:49 2021
 Quant Method : Z:\pestpcbsrv\HPCHEM1\ECD_P\methods\PP111521.M
 Quant Title : GC EXTRACTABLES
 QLast Update : Tue Nov 16 04:45:00 2021
 Response via : Initial Calibration
 Integrator: ChemStation 6890 Scale Mode: Small noise peaks clipped

Volume Inj. : 2 µl
 Signal #1 Phase : ZB-MR1 Signal #2 Phase: ZB-MR2
 Signal #1 Info : 30Mx0.32mmx 0.50µ Signal #2 Info : 30M x 0.32mm x 0.25µm

Compound	RT#1	RT#2	Resp#1	Resp#2	ng/ml	ng/ml

System Monitoring Compounds						
1) SA Tetrachlo...	4.754	3.757	498497	707042	23.638	25.442
2) SA Decachlor...	10.649	9.017	482846	323147	22.104	22.542
Target Compounds						
8) L2 AR-1221-1	5.006	0.000	31374	0	138.489	N.D. #
9) L2 AR-1221-2	0.000	4.103	0	20980	N.D.	82.740 #

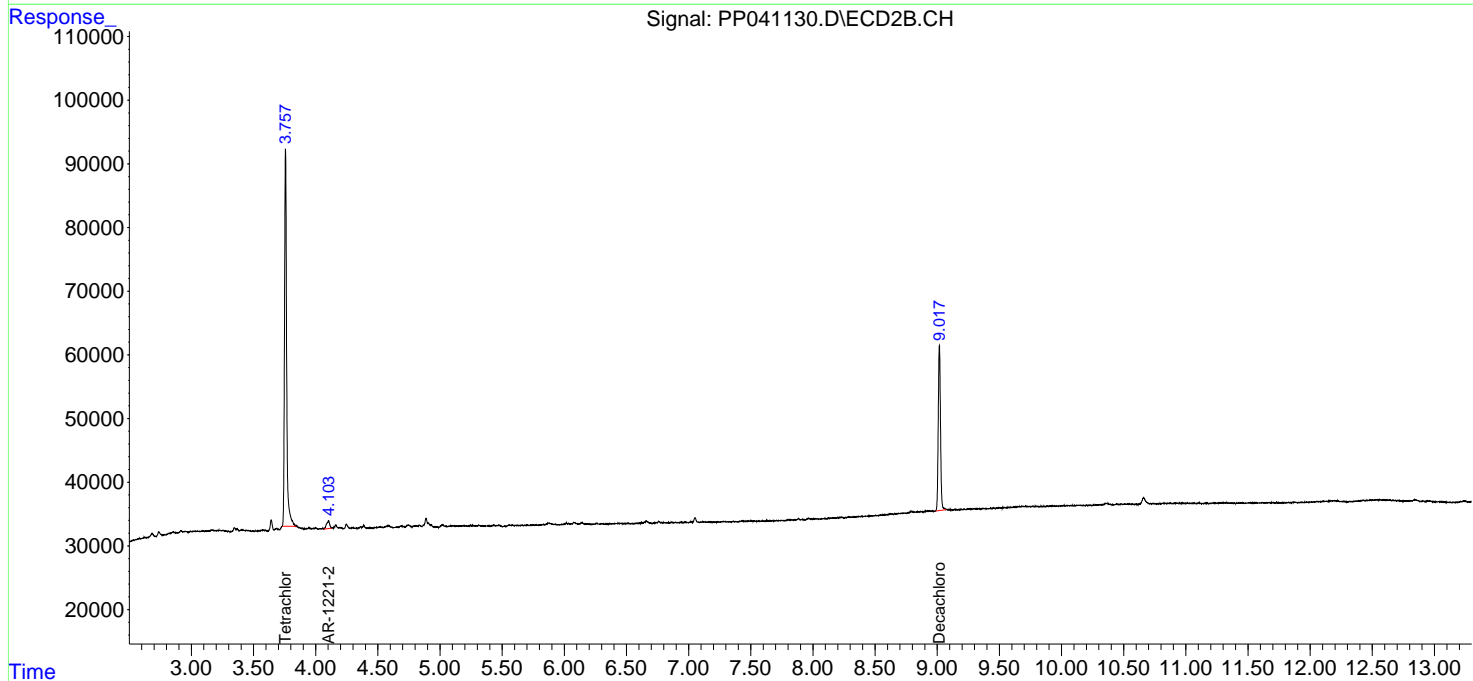
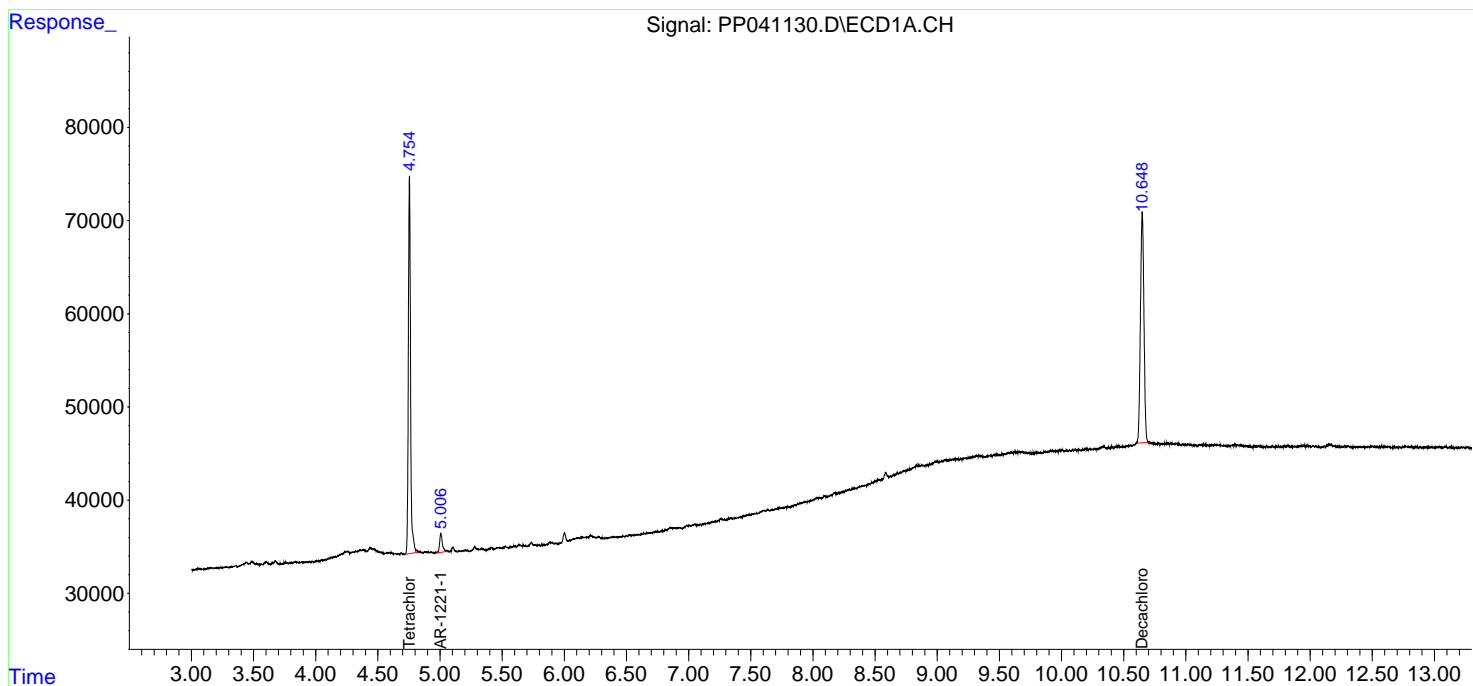
(f)=RT Delta > 1/2 Window (#)=Amounts differ by > 25% (m)=manual int.

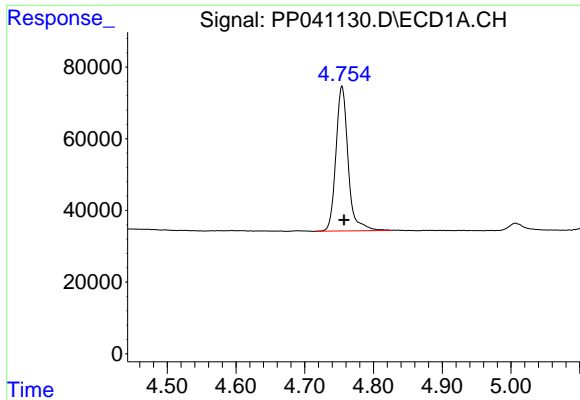
Data Path : Z:\pestpcbsrv\HPCHEM1\ECD_P\Data\PP111921\
 Data File : PP041130.D
 Signal(s) : Signal #1: ECD1A.CH Signal #2: ECD2B.CH
 Acq On : 19 Nov 2021 20:18
 Operator : AJ\MA
 Sample : M4758-03
 Misc :
 ALS Vial : 30 Sample Multiplier: 1

Instrument :
 ECD_P
 ClientSampleId :
 TP2

Integration File signal 1: autoint1.e
 Integration File signal 2: autoint2.e
 Quant Time: Nov 22 01:24:49 2021
 Quant Method : Z:\pestpcbsrv\HPCHEM1\ECD_P\methods\PP111521.M
 Quant Title : GC EXTRACTABLES
 QLast Update : Tue Nov 16 04:45:00 2021
 Response via : Initial Calibration
 Integrator: ChemStation 6890 Scale Mode: Small noise peaks clipped

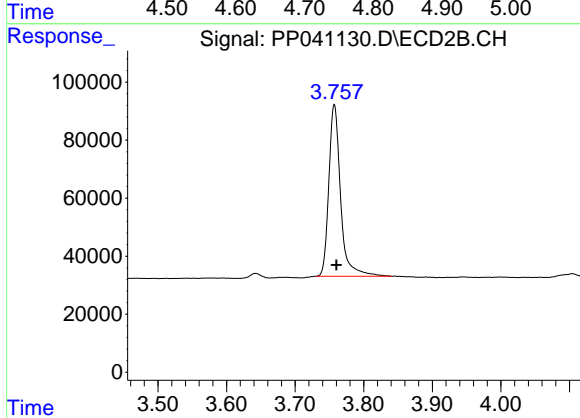
Volume Inj. : 2 µl
 Signal #1 Phase : ZB-MR1 Signal #2 Phase: ZB-MR2
 Signal #1 Info : 30Mx0.32mmx 0.50µ Signal #2 Info : 30M x 0.32mm x 0.25µm



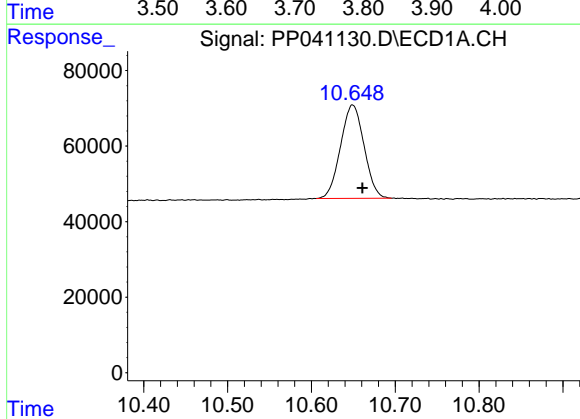


#1 Tetrachloro-m-xylene
 R.T.: 4.754 min
 Delta R.T.: -0.003 min
 Response: 498497
 Conc: 23.64 ng/ml

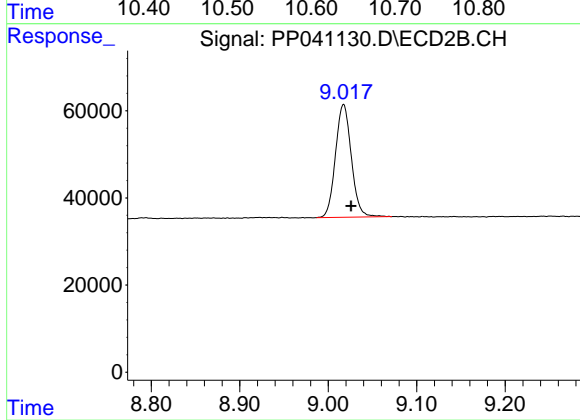
Instrument :
 ECD_P
 ClientSampleId :
 TP2



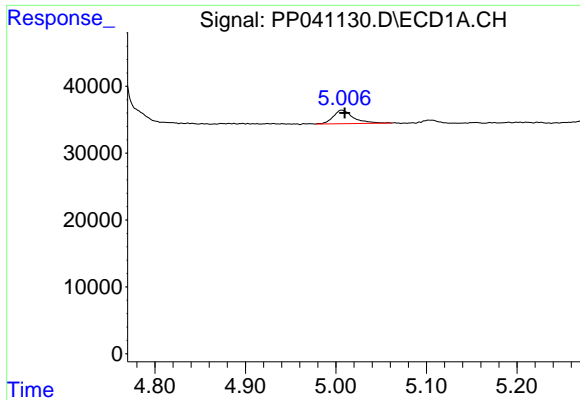
#1 Tetrachloro-m-xylene
 R.T.: 3.757 min
 Delta R.T.: -0.003 min
 Response: 707042
 Conc: 25.44 ng/ml



#2 Decachlorobiphenyl
 R.T.: 10.649 min
 Delta R.T.: -0.012 min
 Response: 482846
 Conc: 22.10 ng/ml



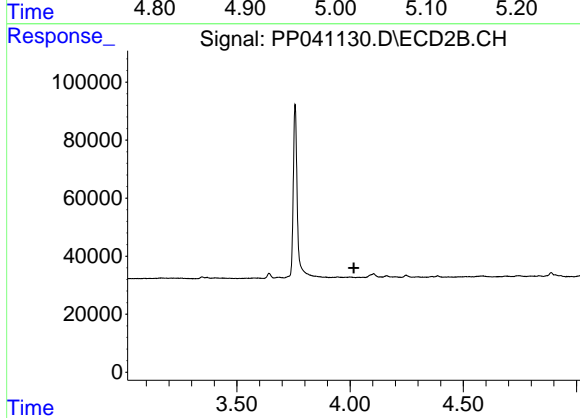
#2 Decachlorobiphenyl
 R.T.: 9.017 min
 Delta R.T.: -0.008 min
 Response: 323147
 Conc: 22.54 ng/ml



#8 AR-1221-1

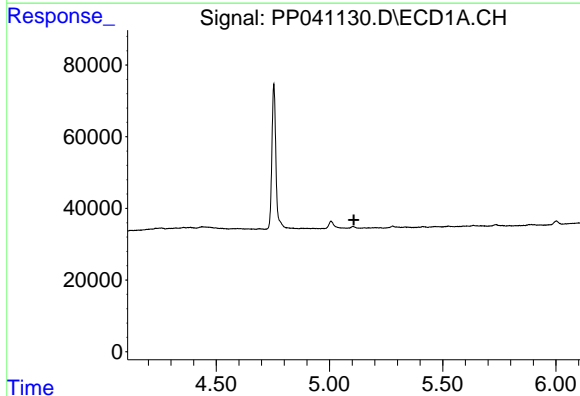
R.T.: 5.006 min
 Delta R.T.: -0.003 min
 Response: 31374
 Conc: 138.49 ng/ml

Instrument :
 ECD_P
 ClientSampleId :
 TP2



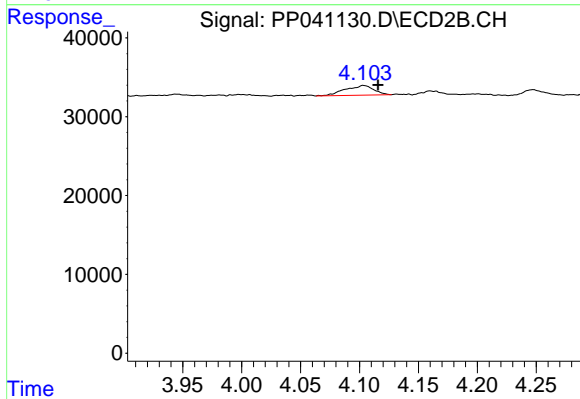
#8 AR-1221-1

R.T.: 0.000 min
 Exp R.T. : 4.017 min
 Response: 0
 Conc: N.D.



#9 AR-1221-2

R.T.: 0.000 min
 Exp R.T. : 5.108 min
 Response: 0
 Conc: N.D.



#9 AR-1221-2

R.T.: 4.103 min
 Delta R.T.: -0.013 min
 Response: 20980
 Conc: 82.74 ng/ml