

Data Path : Z:\pestpcbsrv\HPCHEM1\ECD_P\Data\PP111921\
 Data File : PP041162.D
 Signal(s) : Signal #1: ECD1A.CH Signal #2: ECD2B.CH
 Acq On : 20 Nov 2021 6:12
 Operator : AJ\MA
 Sample : M4756-01
 Misc :
 ALS Vial : 52 Sample Multiplier: 1

Instrument :
 ECD_P
ClientSampleId :
 DRUM-3

Manual Integrations
APPROVED

Reviewed By :Ankita Jodhani 11/22/2021
 Supervised By :Sohil Jodhani 11/22/2021

Integration File signal 1: autoint1.e
 Integration File signal 2: autoint2.e
 Quant Time: Nov 22 01:33:49 2021
 Quant Method : Z:\pestpcbsrv\HPCHEM1\ECD_P\methods\PP111521.M
 Quant Title : GC EXTRACTABLES
 QLast Update : Tue Nov 16 04:45:00 2021
 Response via : Initial Calibration
 Integrator: ChemStation 6890 Scale Mode: Small noise peaks clipped

Volume Inj. : 2 µl
 Signal #1 Phase : ZB-MR1 Signal #2 Phase: ZB-MR2
 Signal #1 Info : 30Mx0.32mmx 0.50µ Signal #2 Info : 30M x 0.32mm x 0.25µm

Compound	RT#1	RT#2	Resp#1	Resp#2	ng/ml	ng/ml

System Monitoring Compounds						
1) SA Tetrachlo...	4.770	3.780f	364812	553184	17.299m	19.905
2) SA Decachlor...	10.650	9.017	554558	357053	25.387	24.907

Target Compounds

(f)=RT Delta > 1/2 Window (#)=Amounts differ by > 25% (m)=manual int.

Data Path : Z:\pestpcbsrv\HPCHEM1\ECD_P\Data\PP111921\
 Data File : PP041162.D
 Signal(s) : Signal #1: ECD1A.CH Signal #2: ECD2B.CH
 Acq On : 20 Nov 2021 6:12
 Operator : AJ\MA
 Sample : M4756-01
 Misc :
 ALS Vial : 52 Sample Multiplier: 1

Instrument :

ECD_P

ClientSampleId :

DRUM-3

Manual Integrations

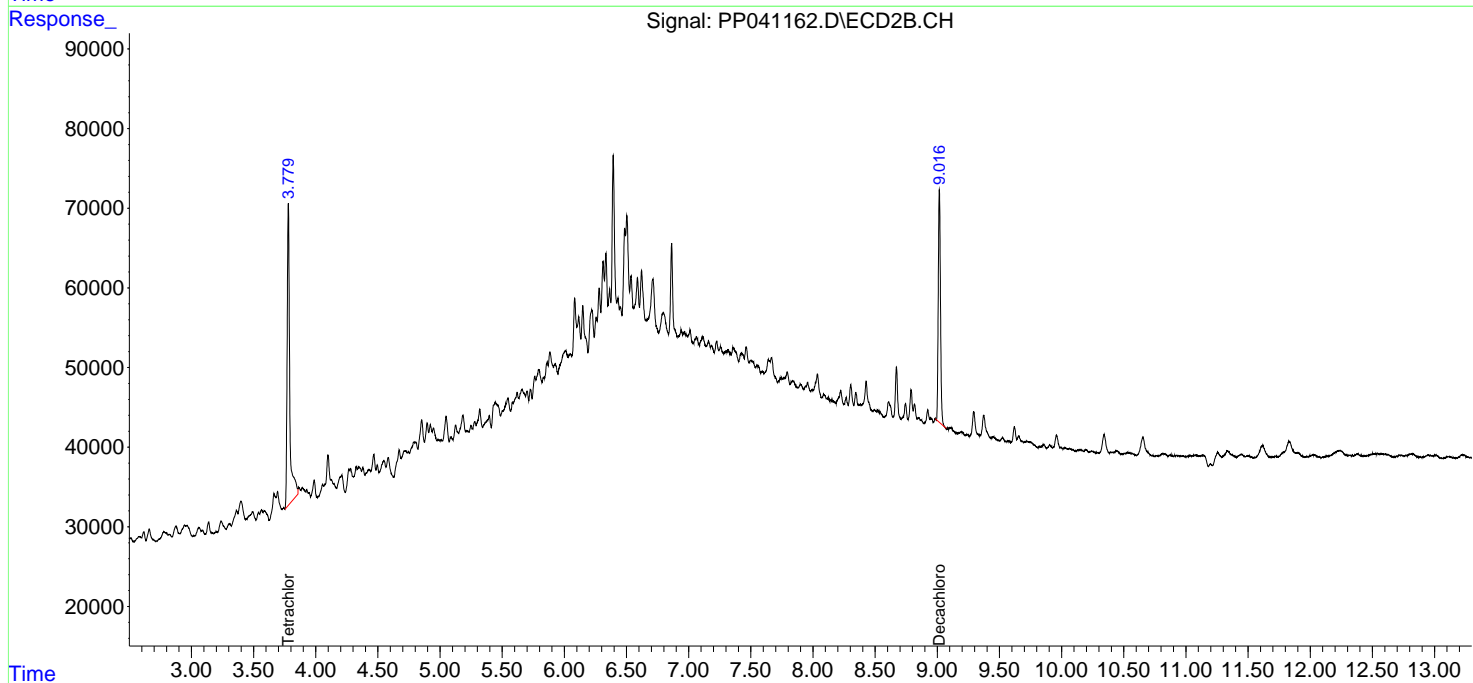
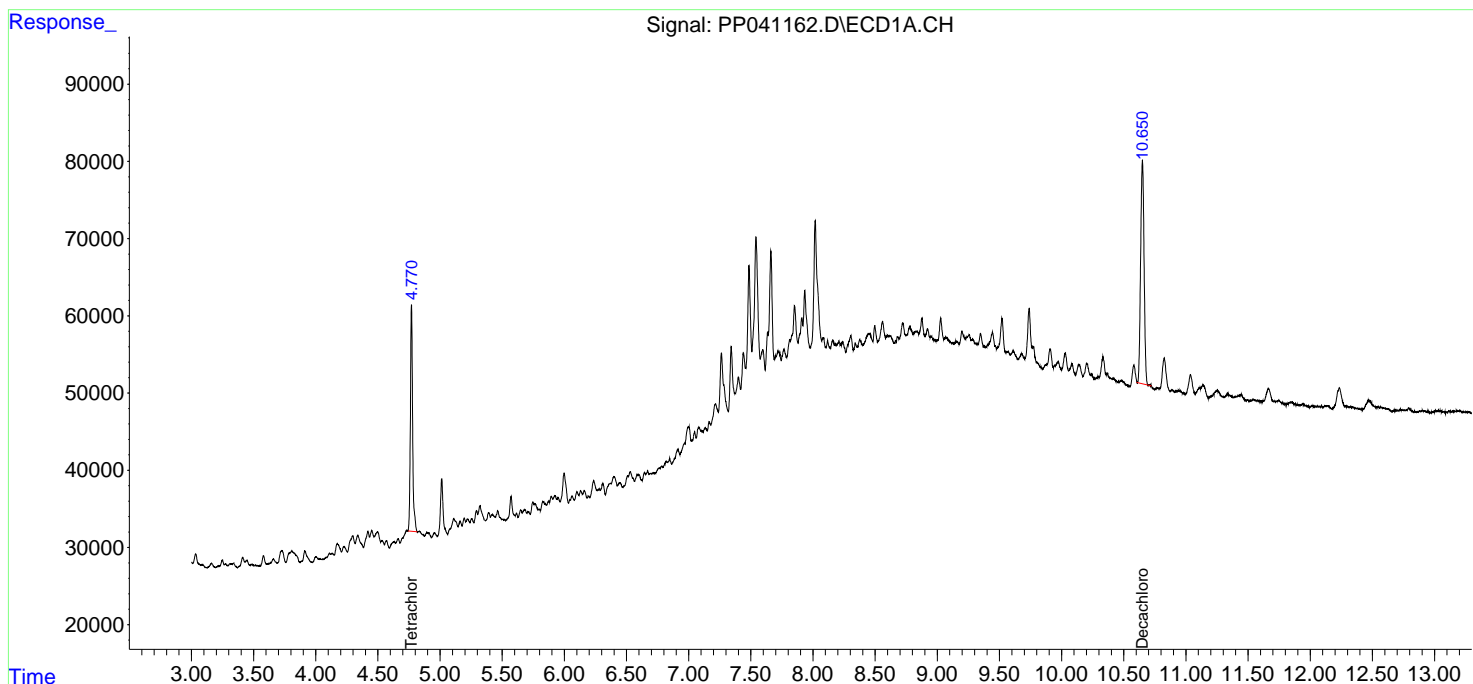
APPROVED

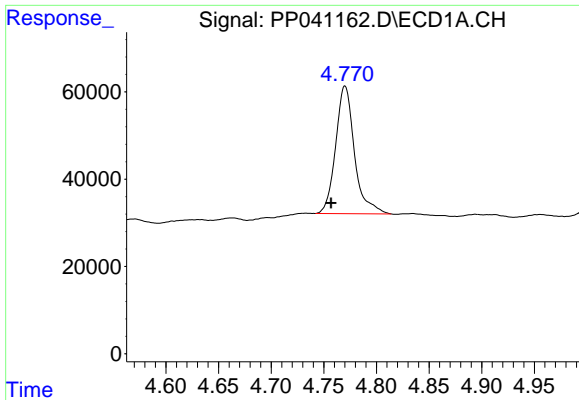
Reviewed By :Ankita Jodhani 11/22/2021

Supervised By :Sohil Jodhani 11/22/2021

Integration File signal 1: autoint1.e
 Integration File signal 2: autoint2.e
 Quant Time: Nov 22 01:33:49 2021
 Quant Method : Z:\pestpcbsrv\HPCHEM1\ECD_P\methods\PP111521.M
 Quant Title : GC EXTRACTABLES
 QLast Update : Tue Nov 16 04:45:00 2021
 Response via : Initial Calibration
 Integrator: ChemStation 6890 Scale Mode: Small noise peaks clipped

Volume Inj. : 2 µl
 Signal #1 Phase : ZB-MR1 Signal #2 Phase: ZB-MR2
 Signal #1 Info : 30Mx0.32mmx 0.50µ Signal #2 Info : 30M x 0.32mm x 0.25µm



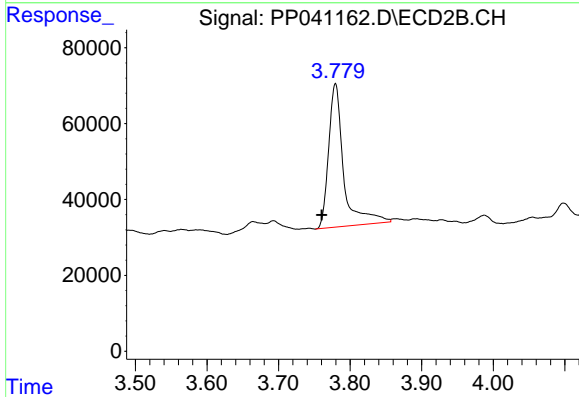


#1 Tetrachloro-m-xylene
 R.T.: 4.770 min
 Delta R.T.: 0.013 min
 Response: 364812
 Conc: 17.30 ng/ml

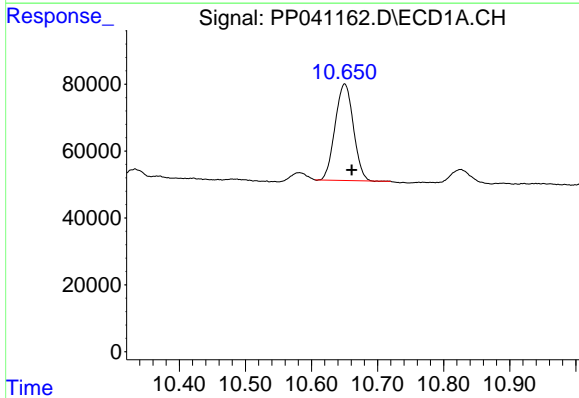
Instrument :
 ECD_P
 ClientSampleId :
 DRUM-3

Manual Integrations
 APPROVED

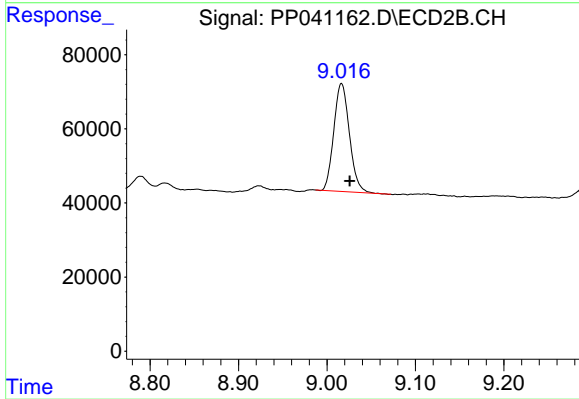
Reviewed By :Ankita Jodhani 11/22/2021
 Supervised By :Sohil Jodhani 11/22/2021



#1 Tetrachloro-m-xylene
 R.T.: 3.780 min
 Delta R.T.: 0.019 min
 Response: 553184
 Conc: 19.91 ng/ml



#2 Decachlorobiphenyl
 R.T.: 10.650 min
 Delta R.T.: -0.011 min
 Response: 554558
 Conc: 25.39 ng/ml



#2 Decachlorobiphenyl
 R.T.: 9.017 min
 Delta R.T.: -0.009 min
 Response: 357053
 Conc: 24.91 ng/ml