

Data Path : Z:\pestpcbsrv\HPCHEM1\ECD_P\Data\PP111924\
 Data File : PP068609.D
 Signal(s) : Signal #1: ECD1A.ch Signal #2: ECD2B.ch
 Acq On : 19 Nov 2024 13:44
 Operator : YP\AJ
 Sample : PB165084BL
 Misc :
 ALS Vial : 9 Sample Multiplier: 1

Instrument :
 ECD_P
 ClientSampleId :
 PB165084BL

Integration File signal 1: autoint1.e
 Integration File signal 2: autoint2.e
 Quant Time: Nov 20 03:54:57 2024
 Quant Method : Z:\pestpcbsrv\HPCHEM1\ECD_P\methods\PP110724.M
 Quant Title : GC EXTRACTABLES
 QLast Update : Fri Nov 08 11:04:08 2024
 Response via : Initial Calibration
 Integrator: ChemStation

Volume Inj. : 2 µl
 Signal #1 Phase : ZB-MR1 Signal #2 Phase: ZB-MR2
 Signal #1 Info : 30Mx0.32mmx 0.50µ Signal #2 Info : 30M x 0.32mm x 0.25µm

Compound	RT#1	RT#2	Resp#1	Resp#2	ng/ml	ng/ml
System Monitoring Compounds						
1) SA Tetrachlo...	4.758	4.049	19875867	19540388	20.478	20.180
2) SA Decachlor...	10.674	9.205	25961192	23730728	20.744	20.979
Target Compounds						
3) L1 AR-1016-1	0.000	5.193	0	199884	N.D.	6.048 #
4) L1 AR-1016-2	0.000	5.193	0	199884	N.D.	4.276 #
5) L1 AR-1016-3	0.000	5.350	0	71745	N.D.	2.653 #
6) L1 AR-1016-4	6.124	5.407	334589	124820	12.731	5.290 #
7) L1 AR-1016-5	0.000	5.652	0	8264	N.D.	0.279 #
9) L2 AR-1221-2	5.068	4.356	858280	510463	85.100	52.232 #
10) L2 AR-1221-3	5.068f	0.000	858280	0	28.364	N.D. #
11) L3 AR-1232-1	5.068f	0.000	858280	0	36.805	N.D. #
12) L3 AR-1232-2	5.643	5.193	1786057	199884	119.431	9.175 #
13) L3 AR-1232-3	0.000	5.350	0	71745	N.D.	6.400 #
14) L3 AR-1232-4	6.124	5.468	334589	40642	27.031	3.709 #
15) L3 AR-1232-5	6.124f	5.652f	334589	8264	33.645	0.671 #
16) L4 AR-1242-1	0.000	5.193f	0	199884	N.D.	7.193 #
17) L4 AR-1242-2	0.000	5.193	0	199884	N.D.	5.175 #
18) L4 AR-1242-3	0.000	5.350	0	71745	N.D.	3.371 #
19) L4 AR-1242-4	6.124	5.468	334589	40642	15.292	1.783 #
20) L4 AR-1242-5	0.000	6.036f	0	231702	N.D.	8.440 #
21) L5 AR-1248-1	0.000	5.193	0	199884	N.D.	9.149 #
22) L5 AR-1248-2	0.000	5.407	0	124820	N.D.	3.904 #
23) L5 AR-1248-3	0.000	5.468	0	40642	N.D.	1.213 #
24) L5 AR-1248-4	0.000	5.652	0	8264	N.D.	0.213 #
25) L5 AR-1248-5	0.000	6.036	0	231702	N.D.	6.251 #
26) L6 AR-1254-1	0.000	6.036f	0	231702	N.D.	3.821 #
27) L6 AR-1254-2	0.000	6.105	0	197719	N.D.	3.749 #
28) L6 AR-1254-3	7.359	6.530	115457	245855	1.616	2.953 #
29) L6 AR-1254-4	0.000	6.702f	0	226158	N.D.	4.651 #
30) L6 AR-1254-5	8.056	7.178	56144	69519	0.896	0.931
31) L7 AR-1260-1	0.000	6.702f	0	226158	N.D.	4.064 #
32) L7 AR-1260-2	0.000	6.823	0	325713	N.D.	4.917 #
33) L7 AR-1260-3	0.000	7.045f	0	70758	N.D.	1.143 #
34) L7 AR-1260-4	0.000	7.512	0	324168	N.D.	6.147 #
35) L7 AR-1260-5	0.000	7.716	0	80920	N.D.	0.680 #
36) L8 AR-1262-1	0.000	7.247	0	144414	N.D.	1.861 #
37) L8 AR-1262-2	0.000	7.512f	0	324168	N.D.	4.585 #
38) L8 AR-1262-3	0.000	8.043f	0	186746	N.D.	3.173 #
39) L8 AR-1262-4	0.000	8.068	0	112790	N.D.	1.089 #
41) L9 AR-1268-1	0.000	8.043f	0	186746	N.D.	1.199 #
42) L9 AR-1268-2	0.000	8.068	0	112790	N.D.	0.797 #
45) L9 AR-1268-5	0.000	8.916	0	170543	N.D.	0.453 #

Data Path : Z:\pestpcbsrv\HPCHEM1\ECD_P\Data\PP111924\
 Data File : PP068609.D
 Signal(s) : Signal #1: ECD1A.ch Signal #2: ECD2B.ch
 Acq On : 19 Nov 2024 13:44
 Operator : YP\AJ
 Sample : PB165084BL
 Misc :
 ALS Vial : 9 Sample Multiplier: 1

Instrument :
 ECD_P
ClientSampleId :
 PB165084BL

Integration File signal 1: autoint1.e
 Integration File signal 2: autoint2.e
 Quant Time: Nov 20 03:54:57 2024
 Quant Method : Z:\pestpcbsrv\HPCHEM1\ECD_P\methods\PP110724.M
 Quant Title : GC EXTRACTABLES
 QLast Update : Fri Nov 08 11:04:08 2024
 Response via : Initial Calibration
 Integrator: ChemStation

Volume Inj. : 2 µl
 Signal #1 Phase : ZB-MR1 Signal #2 Phase: ZB-MR2
 Signal #1 Info : 30Mx0.32mmx 0.50µ Signal #2 Info : 30M x 0.32mm x 0.25µm

Compound	RT#1	RT#2	Resp#1	Resp#2	ng/ml	ng/ml

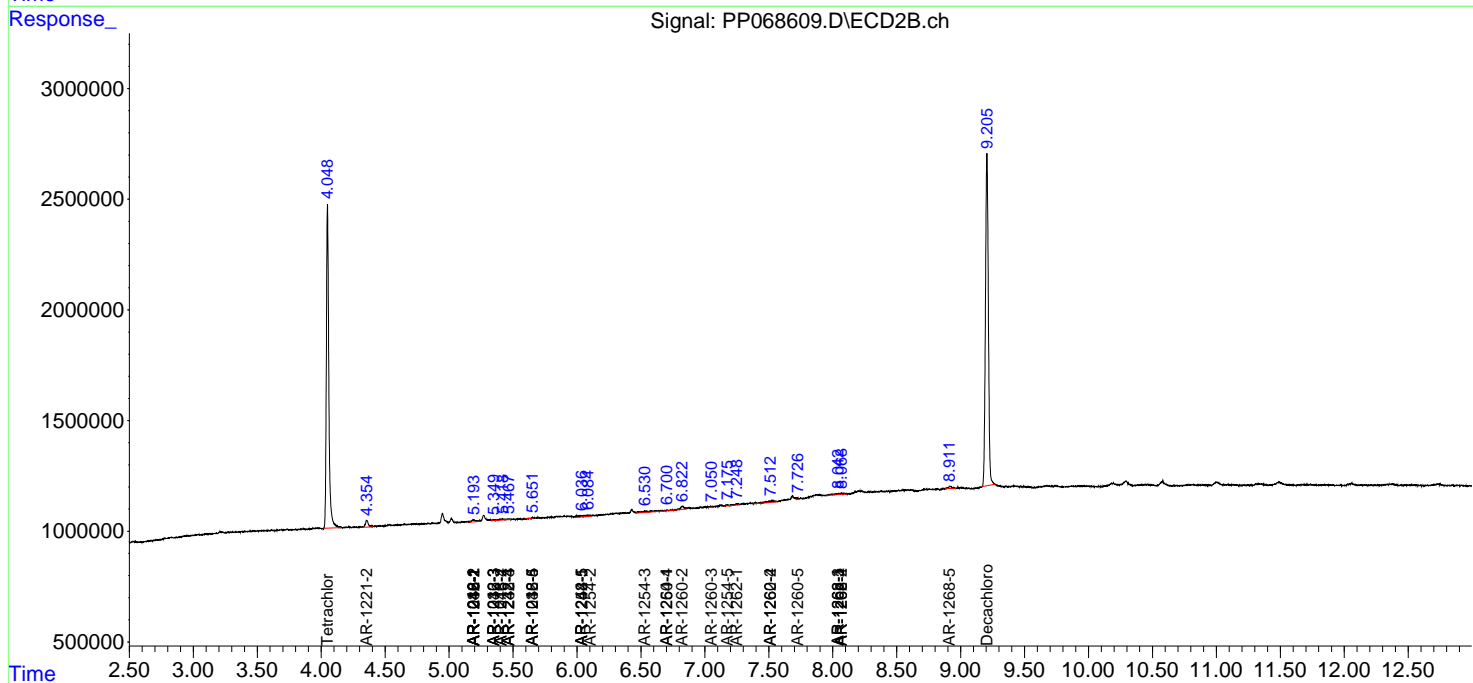
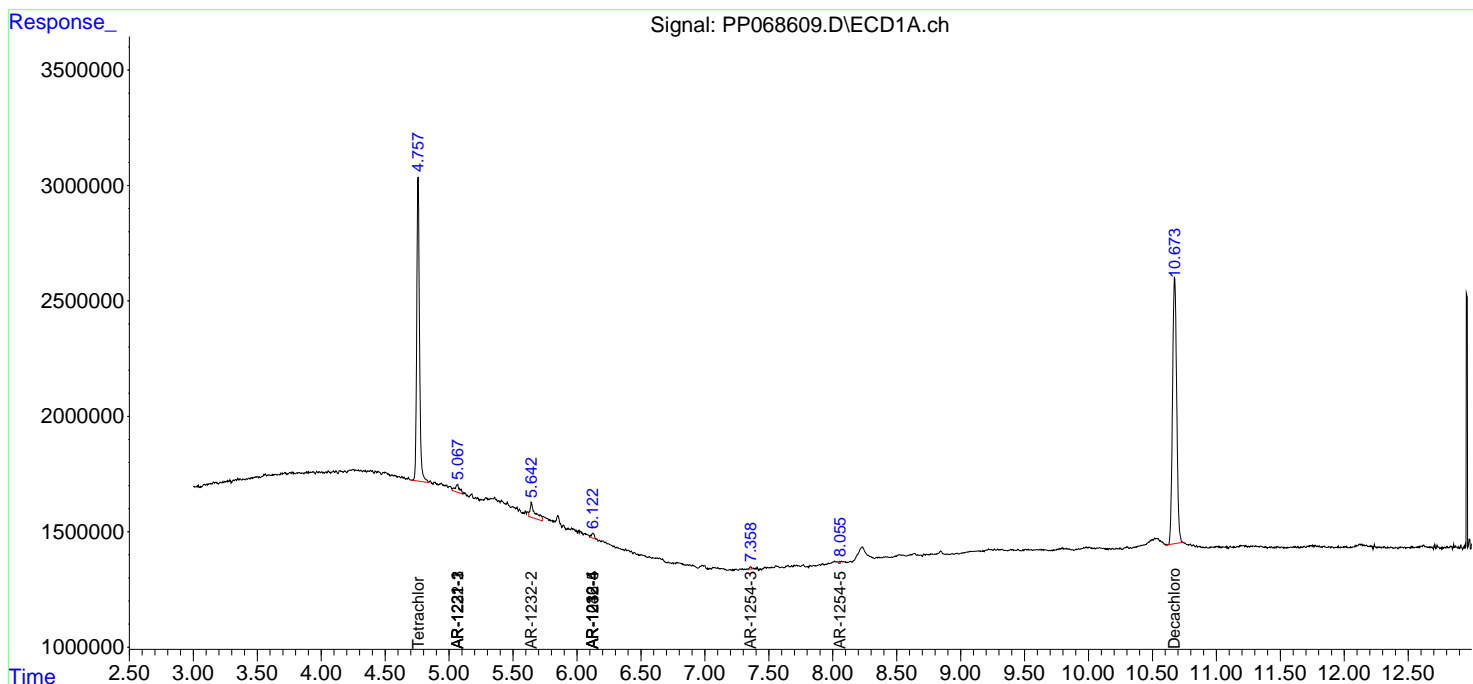
(f)=RT Delta > 1/2 Window (#)=Amounts differ by > 25% (m)=manual int.

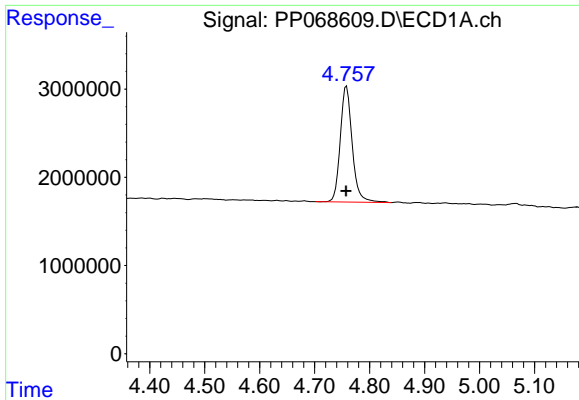
Data Path : Z:\pestpcbsrv\HPCHEM1\ECD_P\Data\PP111924\
 Data File : PP068609.D
 Signal(s) : Signal #1: ECD1A.ch Signal #2: ECD2B.ch
 Acq On : 19 Nov 2024 13:44
 Operator : YP\AJ
 Sample : PB165084BL
 Misc :
 ALS Vial : 9 Sample Multiplier: 1

Instrument :
 ECD_P
 ClientSampleId :
 PB165084BL

Integration File signal 1: autoint1.e
 Integration File signal 2: autoint2.e
 Quant Time: Nov 20 03:54:57 2024
 Quant Method : Z:\pestpcbsrv\HPCHEM1\ECD_P\methods\PP110724.M
 Quant Title : GC EXTRACTABLES
 QLast Update : Fri Nov 08 11:04:08 2024
 Response via : Initial Calibration
 Integrator: ChemStation

Volume Inj. : 2 µl
 Signal #1 Phase : ZB-MR1 Signal #2 Phase: ZB-MR2
 Signal #1 Info : 30Mx0.32mmx 0.50µ Signal #2 Info : 30M x 0.32mm x 0.25µm

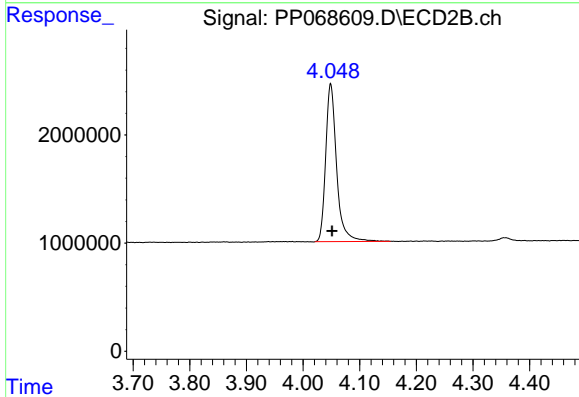




#1 Tetrachloro-m-xylene

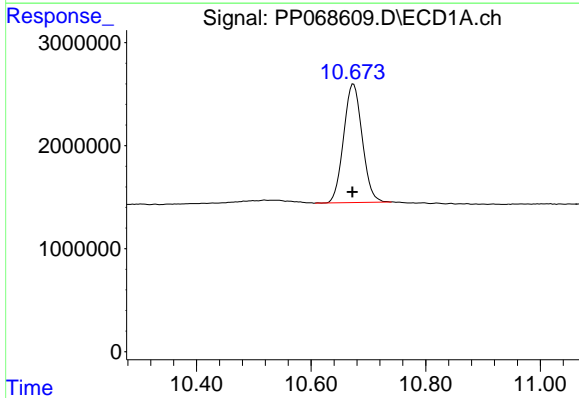
R.T.: 4.758 min
 Delta R.T.: 0.001 min
 Response: 19875867
 Conc: 20.48 ng/ml

Instrument :
 ECD_P
 ClientSampleId :
 PB165084BL



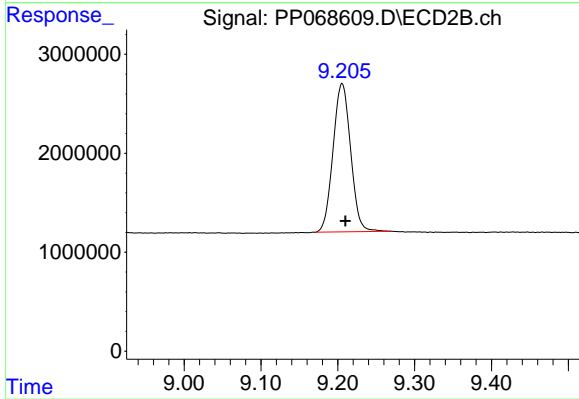
#1 Tetrachloro-m-xylene

R.T.: 4.049 min
 Delta R.T.: -0.002 min
 Response: 19540388
 Conc: 20.18 ng/ml



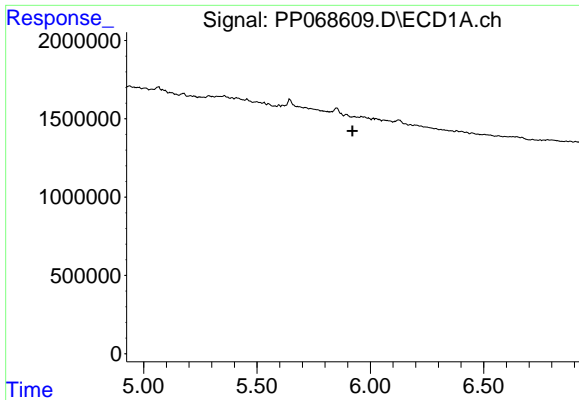
#2 Decachlorobiphenyl

R.T.: 10.674 min
 Delta R.T.: 0.002 min
 Response: 25961192
 Conc: 20.74 ng/ml



#2 Decachlorobiphenyl

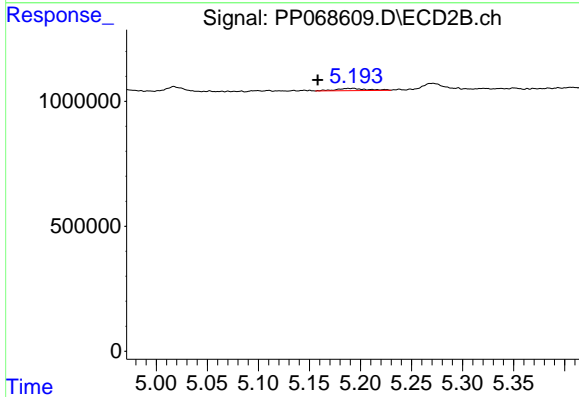
R.T.: 9.205 min
 Delta R.T.: -0.004 min
 Response: 23730728
 Conc: 20.98 ng/ml



#3 AR-1016-1

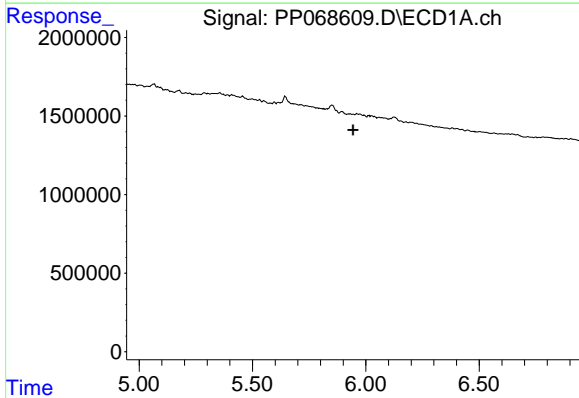
R.T.: 0.000 min
 Exp R.T.: 5.921 min
 Response: 0
 Conc: N.D.

Instrument :
 ECD_P
 ClientSampleId :
 PB165084BL



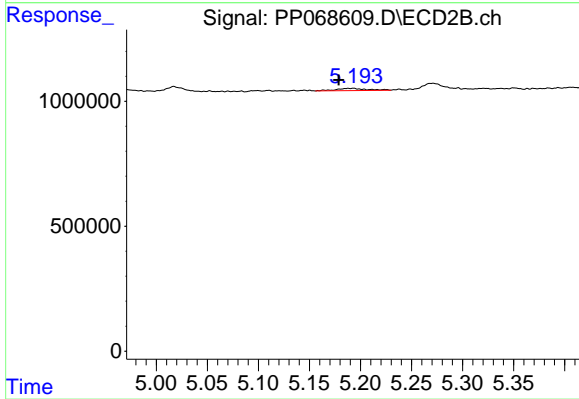
#3 AR-1016-1

R.T.: 5.193 min
 Delta R.T.: 0.035 min
 Response: 199884
 Conc: 6.05 ng/ml



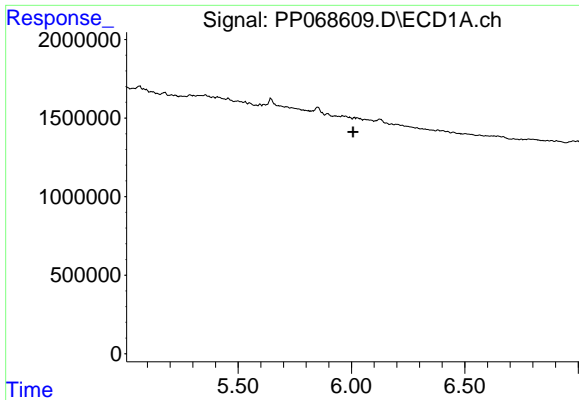
#4 AR-1016-2

R.T.: 0.000 min
 Exp R.T.: 5.944 min
 Response: 0
 Conc: N.D.



#4 AR-1016-2

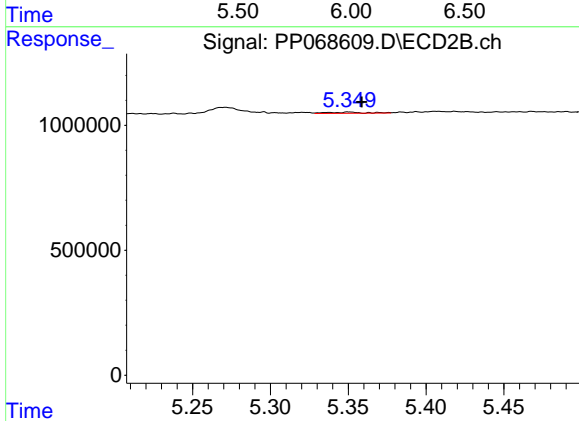
R.T.: 5.193 min
 Delta R.T.: 0.014 min
 Response: 199884
 Conc: 4.28 ng/ml



#5 AR-1016-3

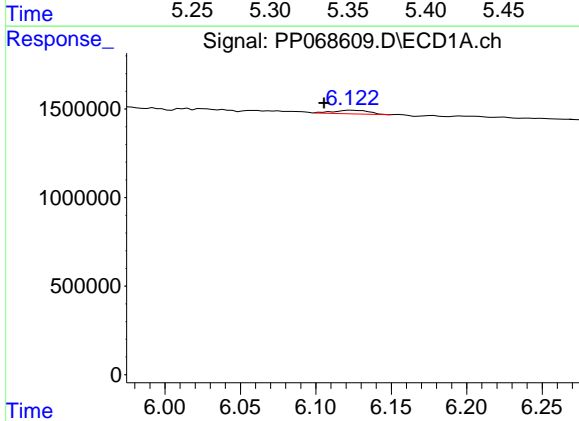
R.T.: 0.000 min
 Exp R.T.: 6.008 min
 Response: 0
 Conc: N.D.

Instrument : ECD_P
 ClientSampleId : PB165084BL



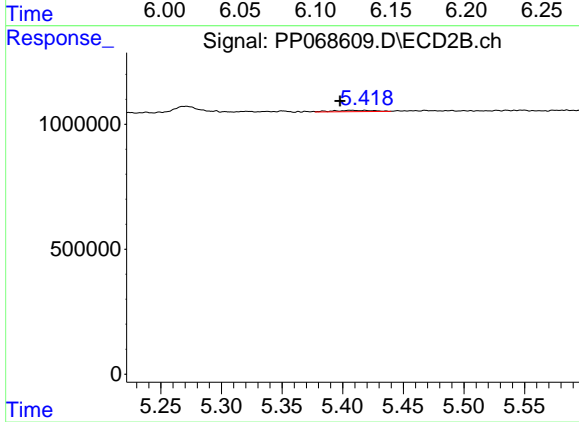
#5 AR-1016-3

R.T.: 5.350 min
 Delta R.T.: -0.008 min
 Response: 71745
 Conc: 2.65 ng/ml



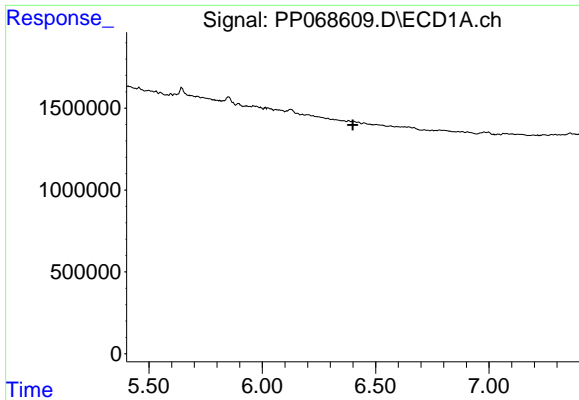
#6 AR-1016-4

R.T.: 6.124 min
 Delta R.T.: 0.019 min
 Response: 334589
 Conc: 12.73 ng/ml



#6 AR-1016-4

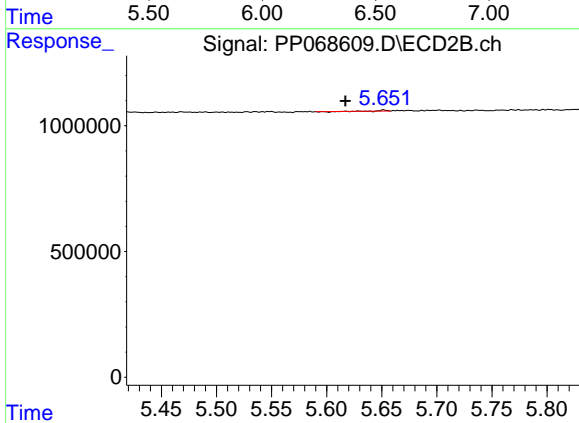
R.T.: 5.407 min
 Delta R.T.: 0.009 min
 Response: 124820
 Conc: 5.29 ng/ml



#7 AR-1016-5

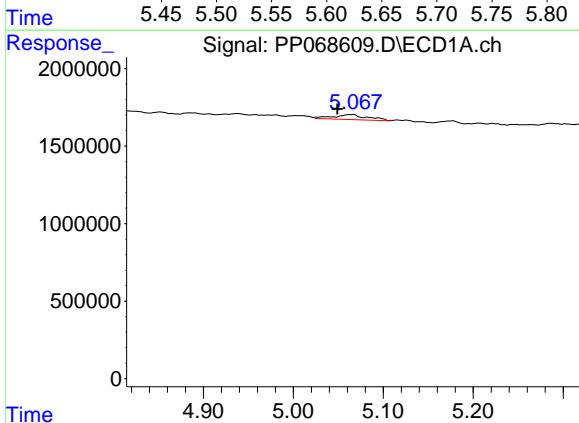
R.T.: 0.000 min
 Exp R.T.: 6.399 min
 Response: 0
 Conc: N.D.

Instrument :
 ECD_P
 ClientSampleId :
 PB165084BL



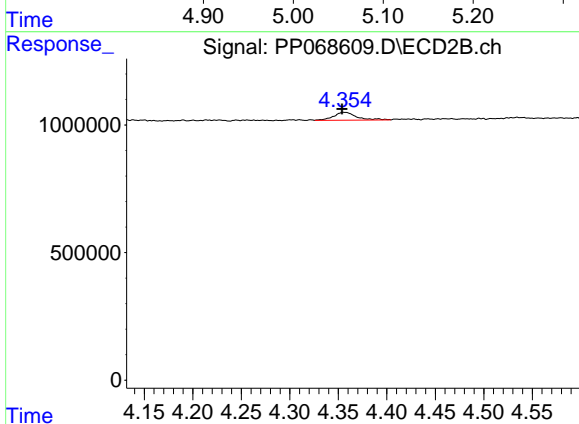
#7 AR-1016-5

R.T.: 5.652 min
 Delta R.T.: 0.035 min
 Response: 8264
 Conc: 0.28 ng/ml



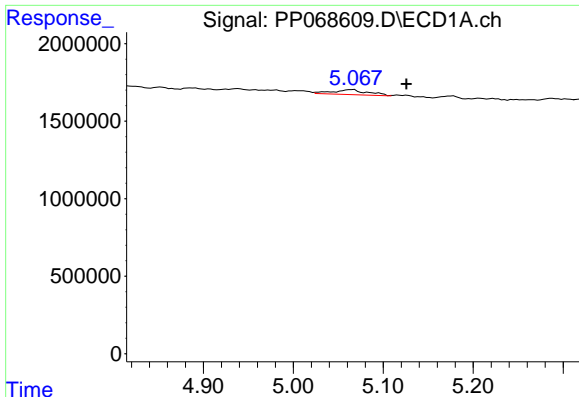
#9 AR-1221-2

R.T.: 5.068 min
 Delta R.T.: 0.018 min
 Response: 858280
 Conc: 85.10 ng/ml



#9 AR-1221-2

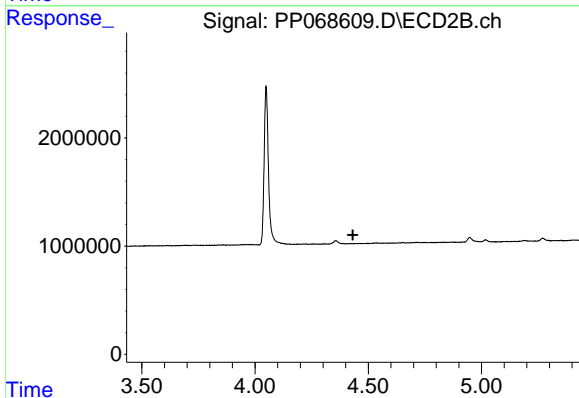
R.T.: 4.356 min
 Delta R.T.: 0.002 min
 Response: 510463
 Conc: 52.23 ng/ml



#10 AR-1221-3

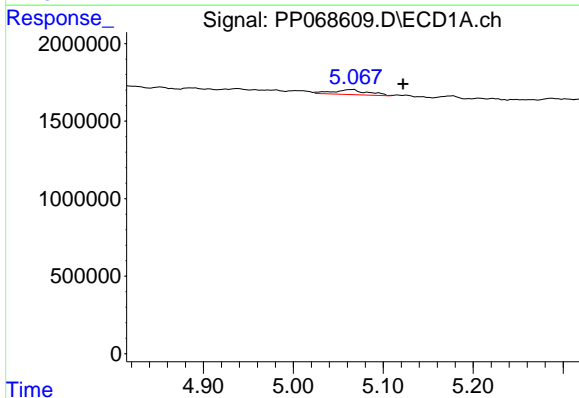
R.T.: 5.068 min
 Delta R.T.: -0.058 min
 Response: 858280
 Conc: 28.36 ng/ml

Instrument :
 ECD_P
 ClientSampleId :
 PB165084BL



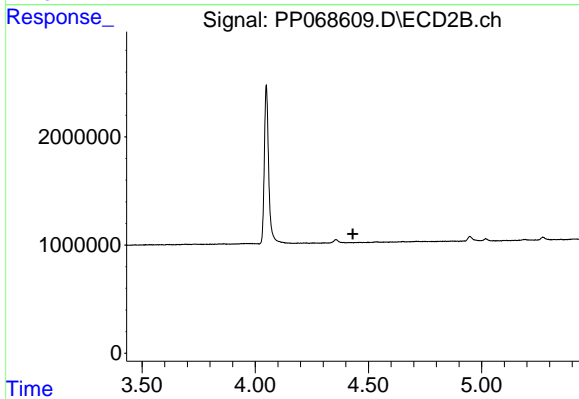
#10 AR-1221-3

R.T.: 0.000 min
 Exp R.T. : 4.432 min
 Response: 0
 Conc: N.D.



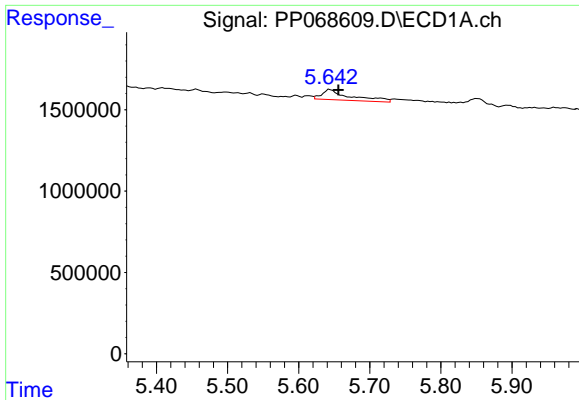
#11 AR-1232-1

R.T.: 5.068 min
 Delta R.T.: -0.055 min
 Response: 858280
 Conc: 36.81 ng/ml



#11 AR-1232-1

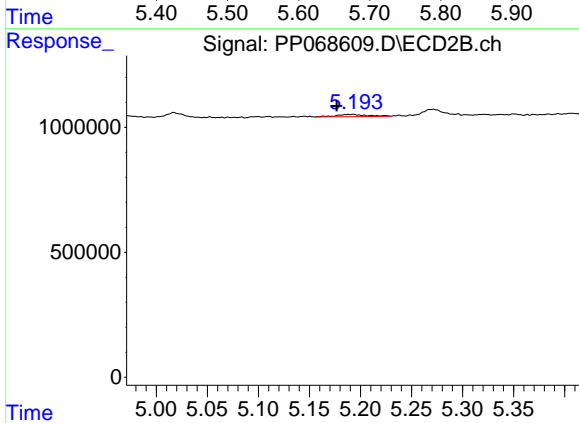
R.T.: 0.000 min
 Exp R.T. : 4.431 min
 Response: 0
 Conc: N.D.



#12 AR-1232-2

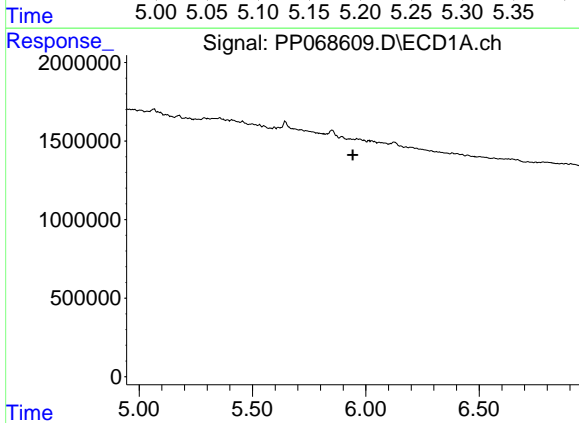
R.T.: 5.643 min
 Delta R.T.: -0.012 min
 Response: 1786057
 Conc: 119.43 ng/ml

Instrument :
 ECD_P
 ClientSampleId :
 PB165084BL



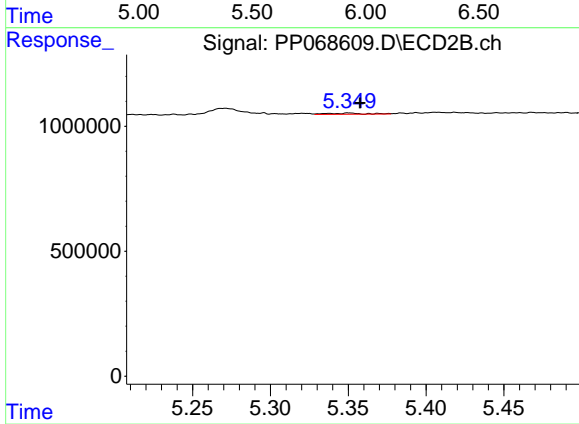
#12 AR-1232-2

R.T.: 5.193 min
 Delta R.T.: 0.016 min
 Response: 199884
 Conc: 9.18 ng/ml



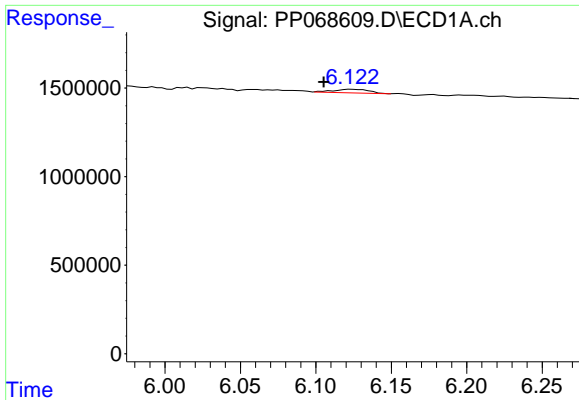
#13 AR-1232-3

R.T.: 0.000 min
 Exp R.T. : 5.943 min
 Response: 0
 Conc: N.D.



#13 AR-1232-3

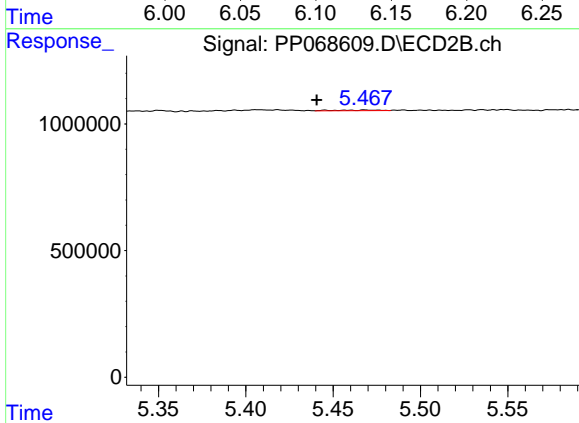
R.T.: 5.350 min
 Delta R.T.: -0.007 min
 Response: 71745
 Conc: 6.40 ng/ml



#14 AR-1232-4

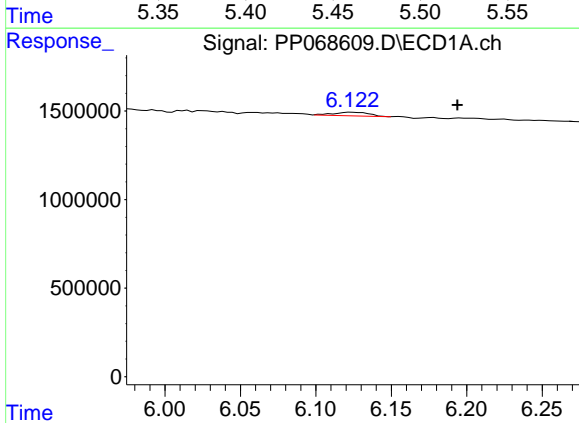
R.T.: 6.124 min
 Delta R.T.: 0.019 min
 Response: 334589
 Conc: 27.03 ng/ml

Instrument :
 ECD_P
 ClientSampleId :
 PB165084BL



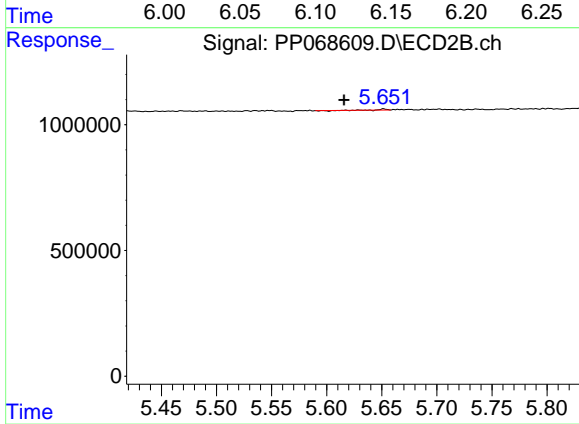
#14 AR-1232-4

R.T.: 5.468 min
 Delta R.T.: 0.027 min
 Response: 40642
 Conc: 3.71 ng/ml



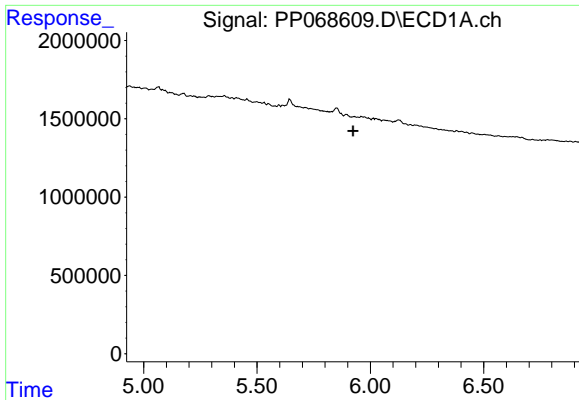
#15 AR-1232-5

R.T.: 6.124 min
 Delta R.T.: -0.070 min
 Response: 334589
 Conc: 33.64 ng/ml



#15 AR-1232-5

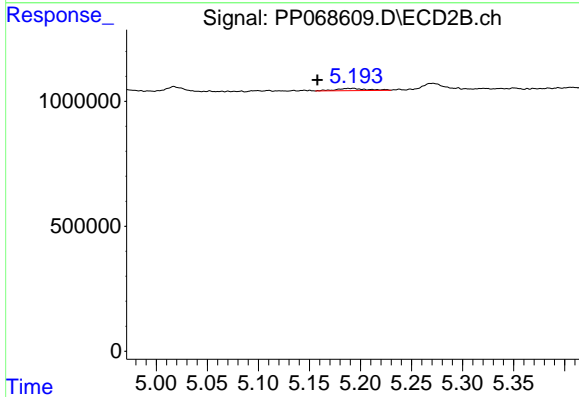
R.T.: 5.652 min
 Delta R.T.: 0.036 min
 Response: 8264
 Conc: 0.67 ng/ml



#16 AR-1242-1

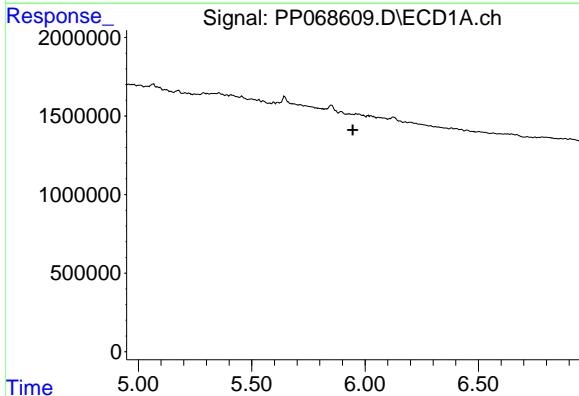
R.T.: 0.000 min
 Exp R.T.: 5.925 min
 Response: 0
 Conc: N.D.

Instrument : ECD_P
 ClientSampleId : PB165084BL



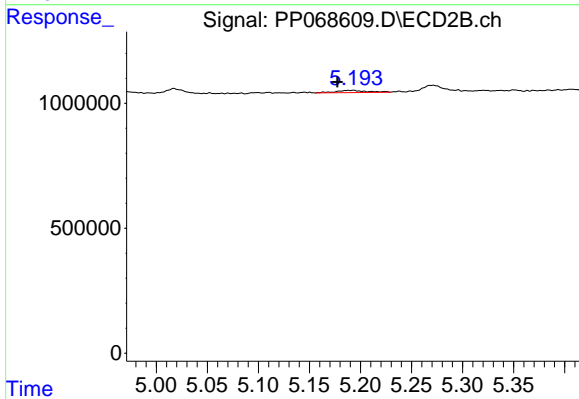
#16 AR-1242-1

R.T.: 5.193 min
 Delta R.T.: 0.035 min
 Response: 199884
 Conc: 7.19 ng/ml



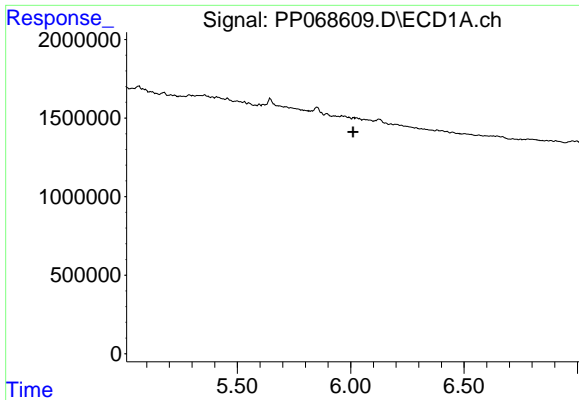
#17 AR-1242-2

R.T.: 0.000 min
 Exp R.T.: 5.947 min
 Response: 0
 Conc: N.D.



#17 AR-1242-2

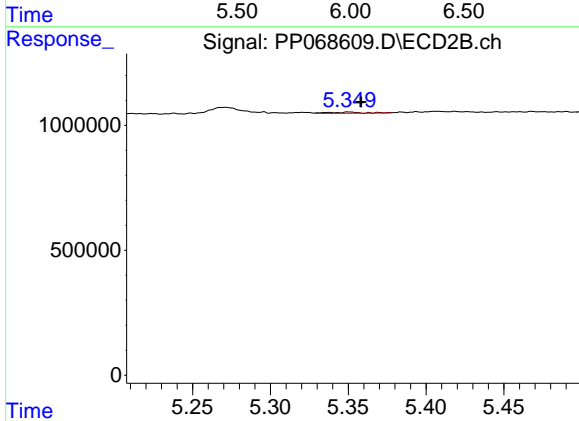
R.T.: 5.193 min
 Delta R.T.: 0.015 min
 Response: 199884
 Conc: 5.17 ng/ml



#18 AR-1242-3

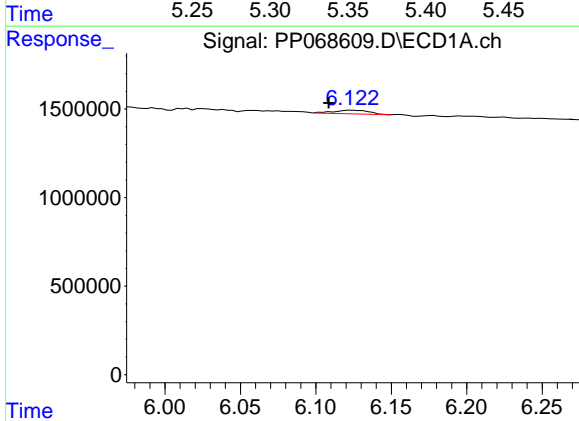
R.T.: 0.000 min
 Exp R.T.: 6.010 min
 Response: 0
 Conc: N.D.

Instrument :
 ECD_P
 ClientSampleId :
 PB165084BL



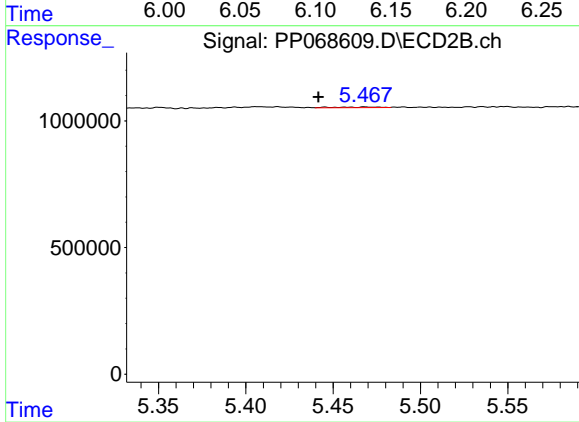
#18 AR-1242-3

R.T.: 5.350 min
 Delta R.T.: -0.008 min
 Response: 71745
 Conc: 3.37 ng/ml



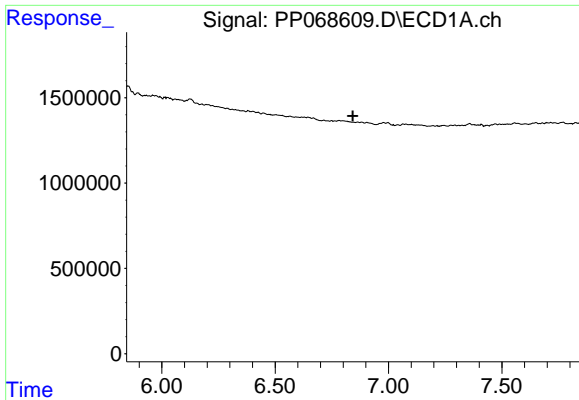
#19 AR-1242-4

R.T.: 6.124 min
 Delta R.T.: 0.015 min
 Response: 334589
 Conc: 15.29 ng/ml



#19 AR-1242-4

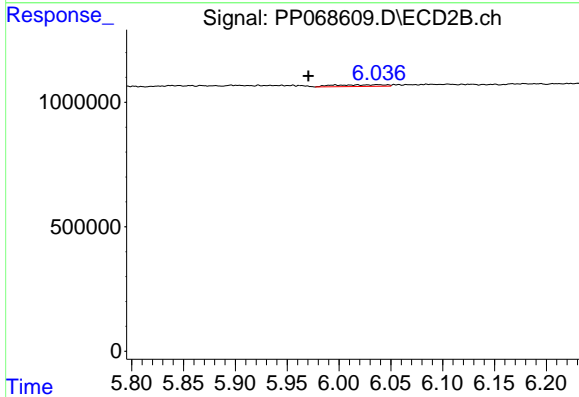
R.T.: 5.468 min
 Delta R.T.: 0.027 min
 Response: 40642
 Conc: 1.78 ng/ml



#20 AR-1242-5

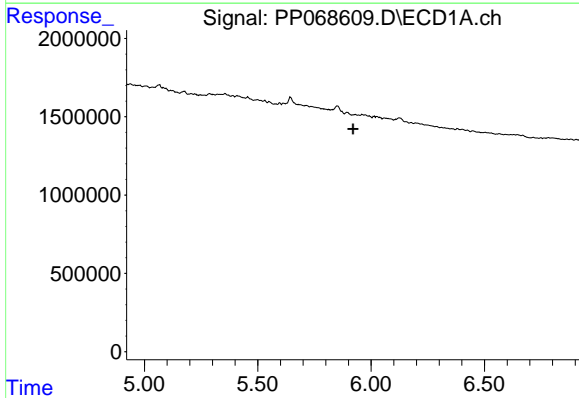
R.T.: 0.000 min
 Exp R.T. : 6.842 min
 Response: 0
 Conc: N.D.

Instrument :
 ECD_P
 ClientSampleId :
 PB165084BL



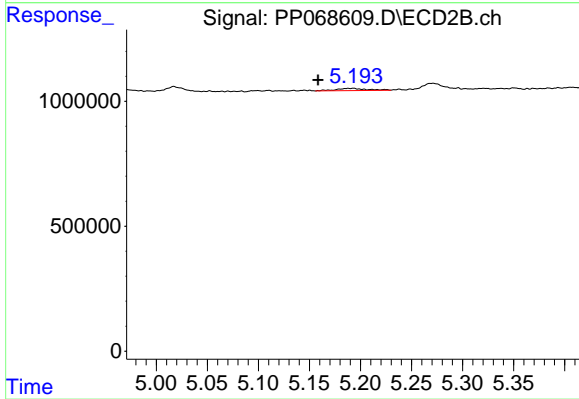
#20 AR-1242-5

R.T.: 6.036 min
 Delta R.T.: 0.066 min
 Response: 231702
 Conc: 8.44 ng/ml



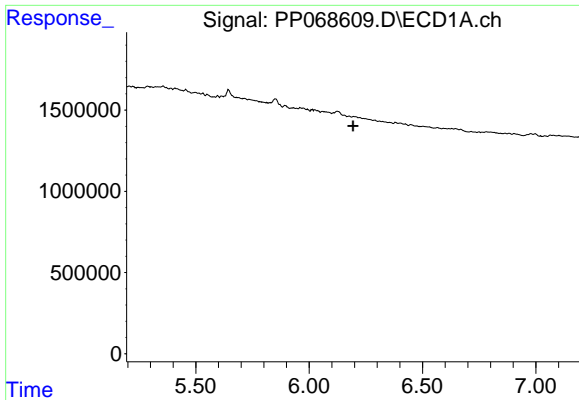
#21 AR-1248-1

R.T.: 0.000 min
 Exp R.T. : 5.921 min
 Response: 0
 Conc: N.D.



#21 AR-1248-1

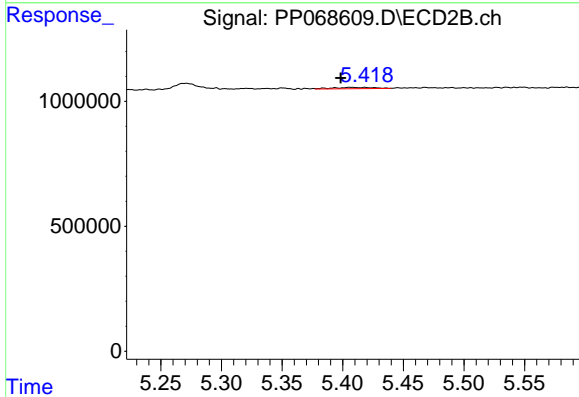
R.T.: 5.193 min
 Delta R.T.: 0.035 min
 Response: 199884
 Conc: 9.15 ng/ml



#22 AR-1248-2

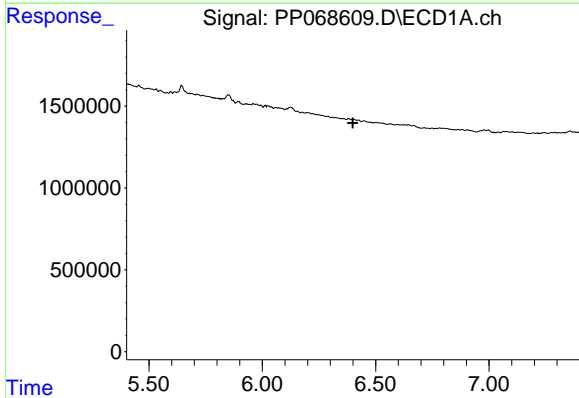
R.T.: 0.000 min
 Exp R.T. : 6.194 min
 Response: 0
 Conc: N.D.

Instrument :
 ECD_P
 ClientSampleId :
 PB165084BL



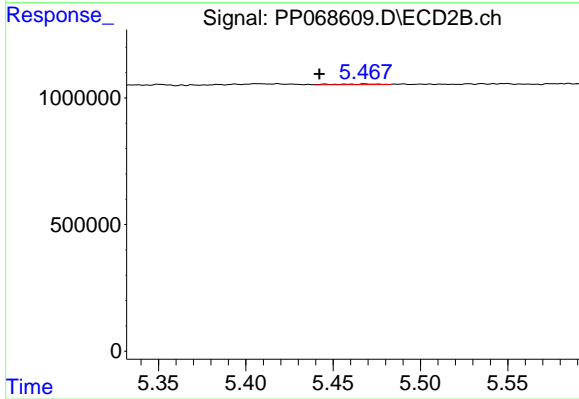
#22 AR-1248-2

R.T.: 5.407 min
 Delta R.T.: 0.008 min
 Response: 124820
 Conc: 3.90 ng/ml



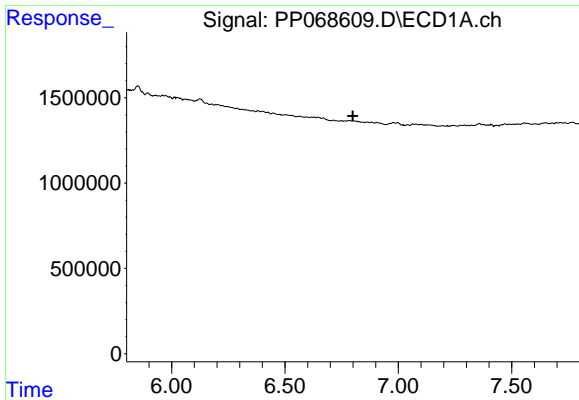
#23 AR-1248-3

R.T.: 0.000 min
 Exp R.T. : 6.399 min
 Response: 0
 Conc: N.D.



#23 AR-1248-3

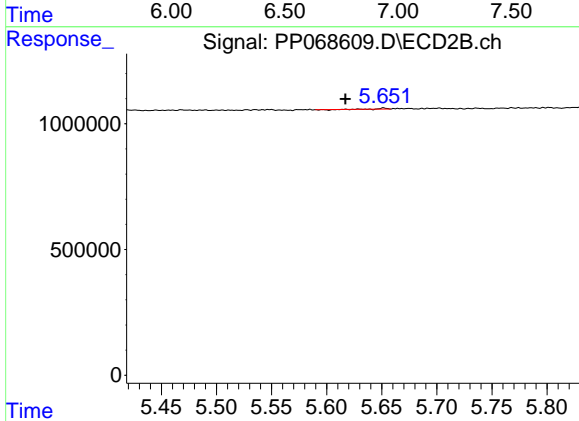
R.T.: 5.468 min
 Delta R.T.: 0.026 min
 Response: 40642
 Conc: 1.21 ng/ml



#24 AR-1248-4

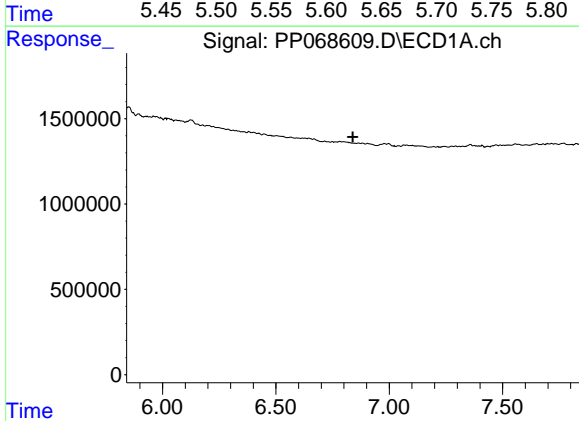
R.T.: 0.000 min
 Exp R.T. : 6.799 min
 Response: 0
 Conc: N.D.

Instrument :
 ECD_P
 ClientSampleId :
 PB165084BL



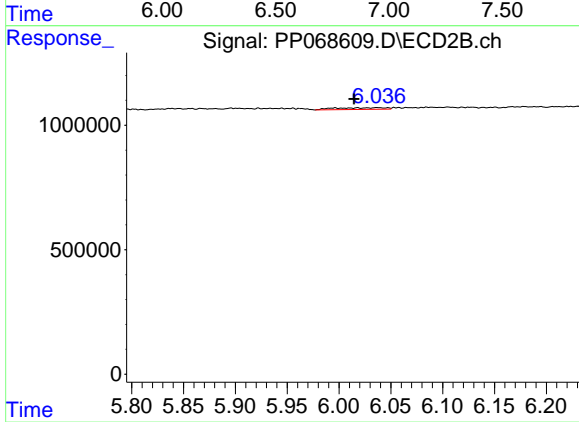
#24 AR-1248-4

R.T.: 5.652 min
 Delta R.T.: 0.035 min
 Response: 8264
 Conc: 0.21 ng/ml



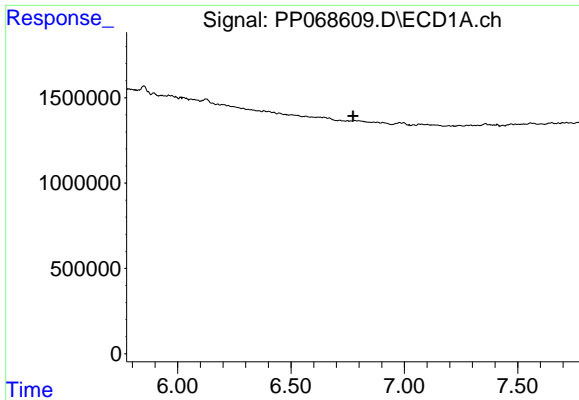
#25 AR-1248-5

R.T.: 0.000 min
 Exp R.T. : 6.840 min
 Response: 0
 Conc: N.D.



#25 AR-1248-5

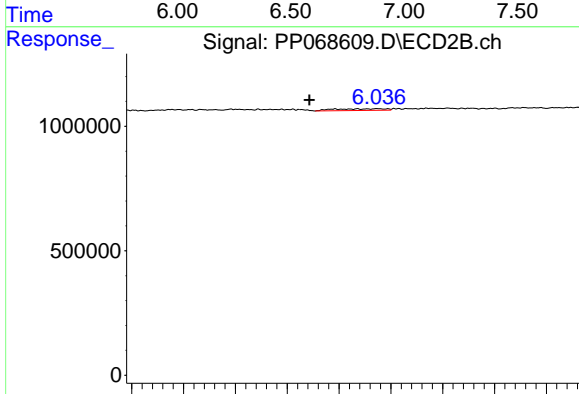
R.T.: 6.036 min
 Delta R.T.: 0.022 min
 Response: 231702
 Conc: 6.25 ng/ml



#26 AR-1254-1

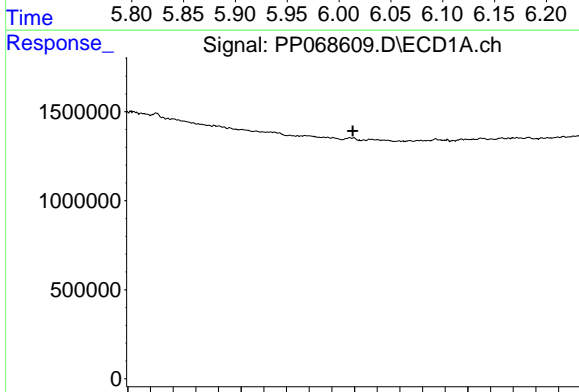
R.T.: 0.000 min
 Exp R.T. : 6.774 min
 Response: 0
 Conc: N.D.

Instrument :
 ECD_P
 ClientSampleId :
 PB165084BL



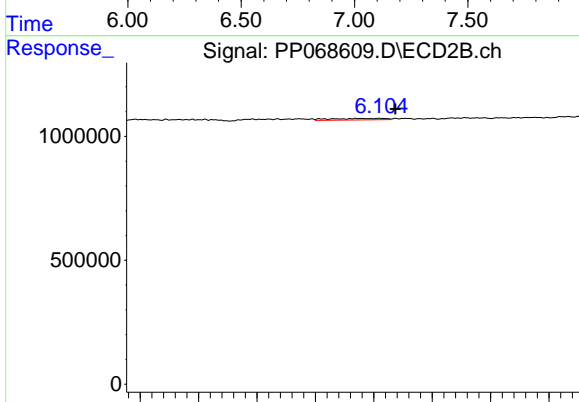
#26 AR-1254-1

R.T.: 6.036 min
 Delta R.T.: 0.065 min
 Response: 231702
 Conc: 3.82 ng/ml



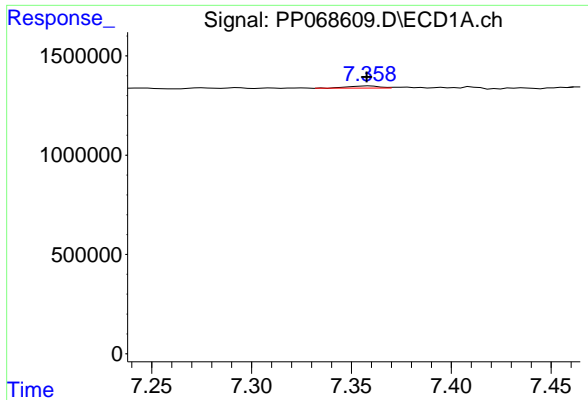
#27 AR-1254-2

R.T.: 0.000 min
 Exp R.T. : 6.993 min
 Response: 0
 Conc: N.D.



#27 AR-1254-2

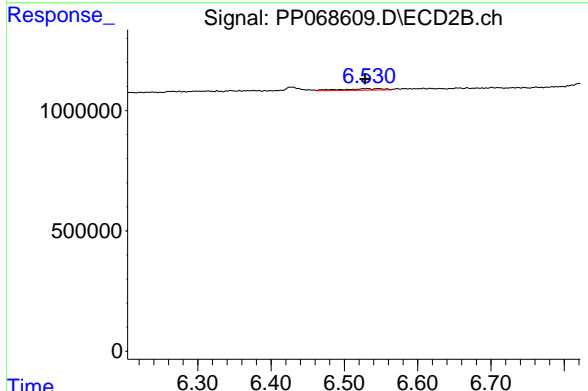
R.T.: 6.105 min
 Delta R.T.: -0.013 min
 Response: 197719
 Conc: 3.75 ng/ml



#28 AR-1254-3

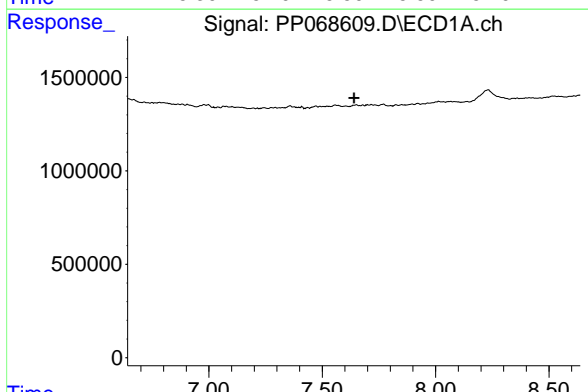
R.T.: 7.359 min
 Delta R.T.: 0.001 min
 Response: 115457
 Conc: 1.62 ng/ml

Instrument :
 ECD_P
 ClientSampleId :
 PB165084BL



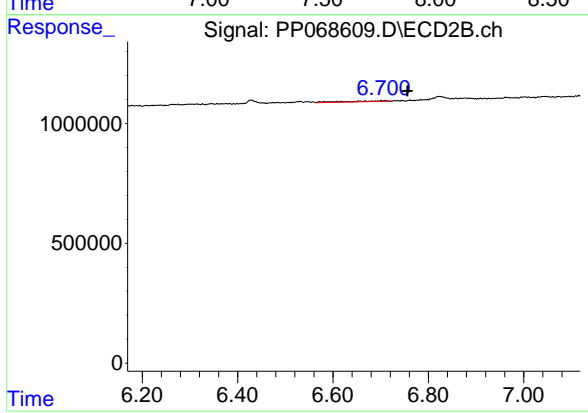
#28 AR-1254-3

R.T.: 6.530 min
 Delta R.T.: 0.002 min
 Response: 245855
 Conc: 2.95 ng/ml



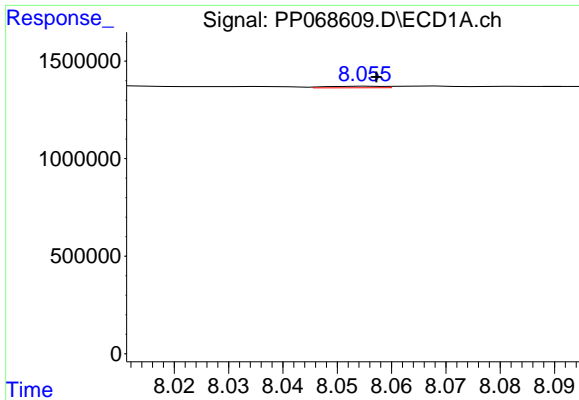
#29 AR-1254-4

R.T.: 0.000 min
 Exp R.T. : 7.640 min
 Response: 0
 Conc: N.D.



#29 AR-1254-4

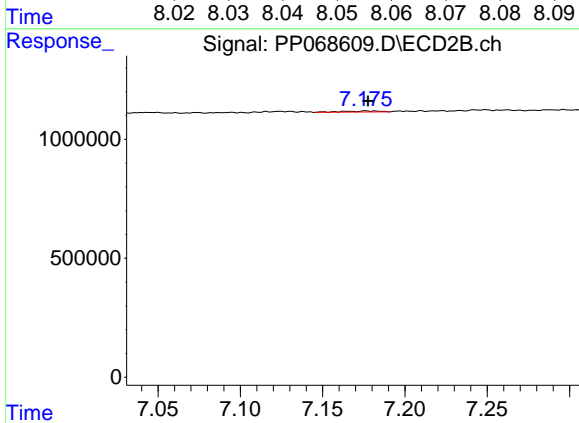
R.T.: 6.702 min
 Delta R.T.: -0.054 min
 Response: 226158
 Conc: 4.65 ng/ml



#30 AR-1254-5

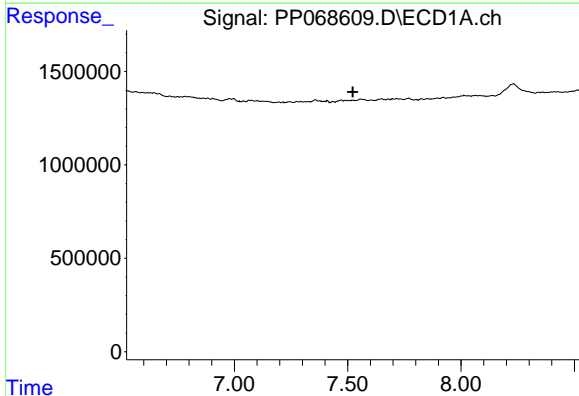
R.T.: 8.056 min
Delta R.T.: -0.002 min
Response: 56144
Conc: 0.90 ng/ml

Instrument :
ECD_P
ClientSampleId :
PB165084BL



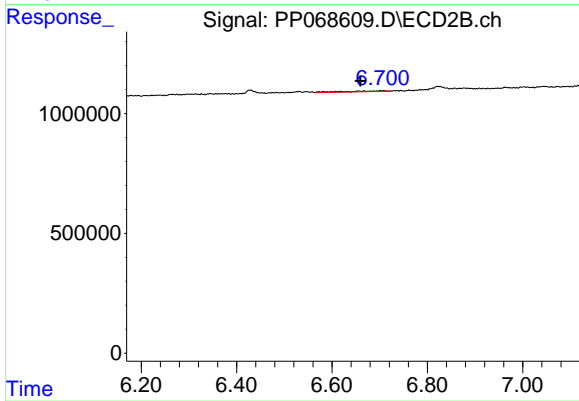
#30 AR-1254-5

R.T.: 7.178 min
Delta R.T.: 0.000 min
Response: 69519
Conc: 0.93 ng/ml



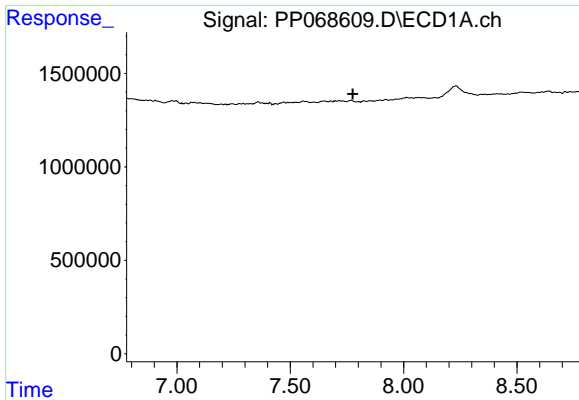
#31 AR-1260-1

R.T.: 0.000 min
Exp R.T. : 7.523 min
Response: 0
Conc: N.D.



#31 AR-1260-1

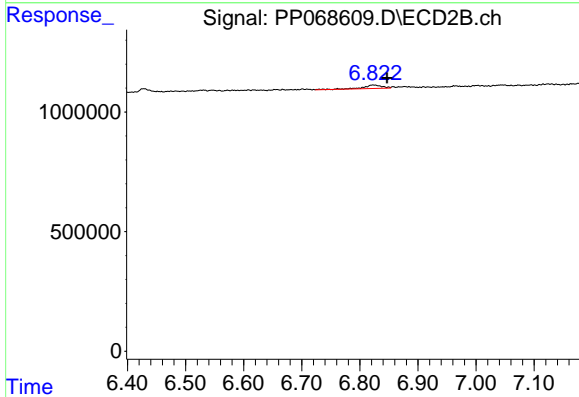
R.T.: 6.702 min
Delta R.T.: 0.042 min
Response: 226158
Conc: 4.06 ng/ml



#32 AR-1260-2

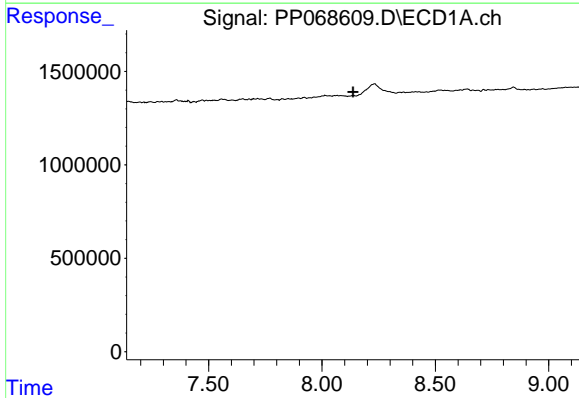
R.T.: 0.000 min
 Exp R.T. : 7.776 min
 Response: 0
 Conc: N.D.

Instrument :
 ECD_P
 ClientSampleId :
 PB165084BL



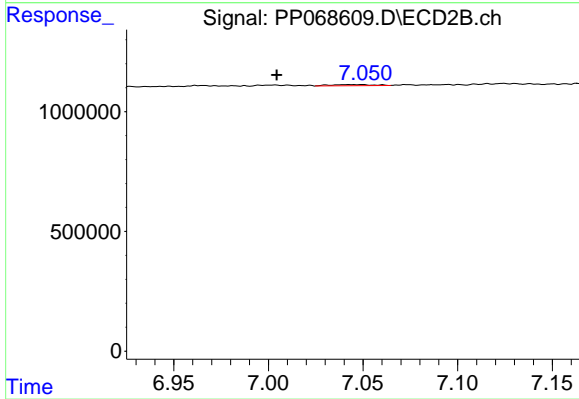
#32 AR-1260-2

R.T.: 6.823 min
 Delta R.T.: -0.024 min
 Response: 325713
 Conc: 4.92 ng/ml



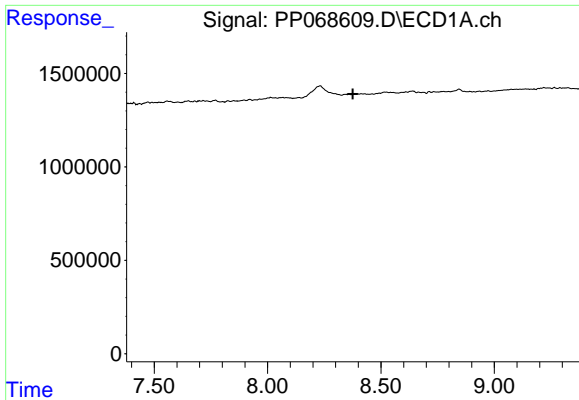
#33 AR-1260-3

R.T.: 0.000 min
 Exp R.T. : 8.138 min
 Response: 0
 Conc: N.D.



#33 AR-1260-3

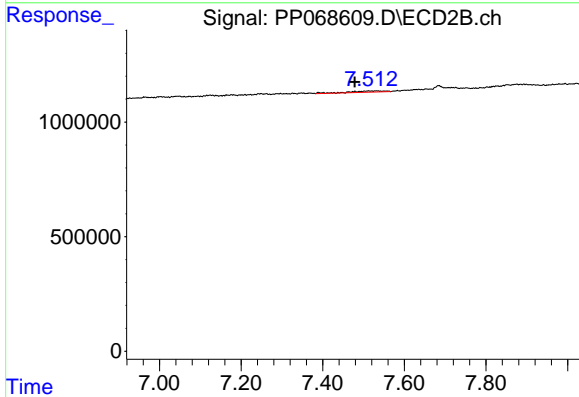
R.T.: 7.045 min
 Delta R.T.: 0.041 min
 Response: 70758
 Conc: 1.14 ng/ml



#34 AR-1260-4

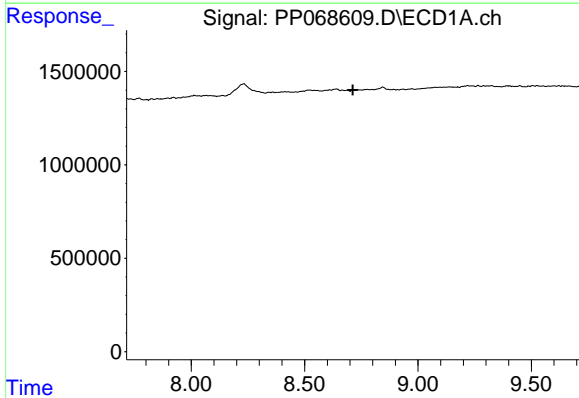
R.T.: 0.000 min
 Exp R.T. : 8.376 min
 Response: 0
 Conc: N.D.

Instrument :
 ECD_P
 ClientSampleId :
 PB165084BL



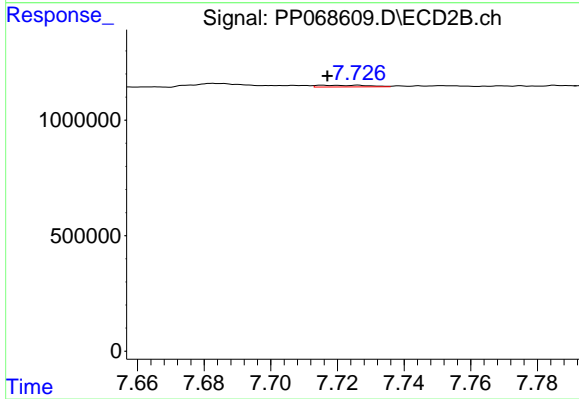
#34 AR-1260-4

R.T.: 7.512 min
 Delta R.T.: 0.034 min
 Response: 324168
 Conc: 6.15 ng/ml



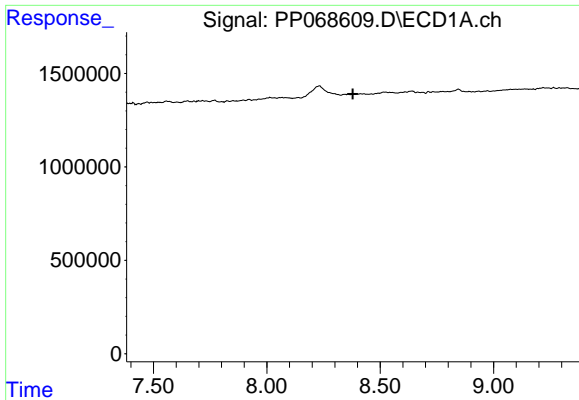
#35 AR-1260-5

R.T.: 0.000 min
 Exp R.T. : 8.713 min
 Response: 0
 Conc: N.D.



#35 AR-1260-5

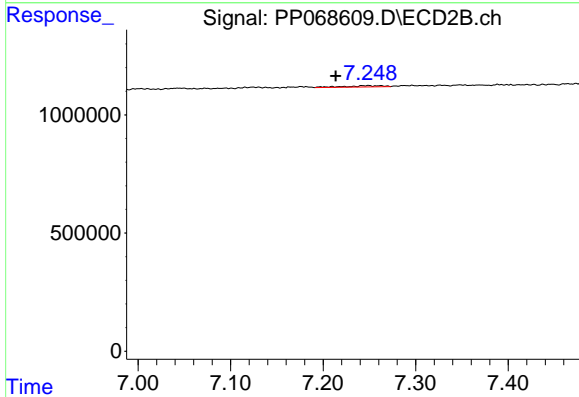
R.T.: 7.716 min
 Delta R.T.: 0.000 min
 Response: 80920
 Conc: 0.68 ng/ml



#36 AR-1262-1

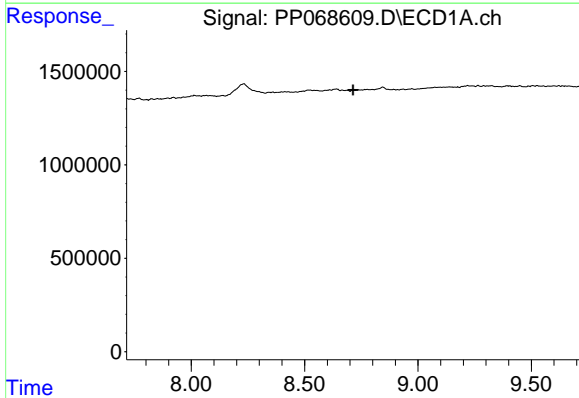
R.T.: 0.000 min
 Exp R.T. : 8.379 min
 Response: 0
 Conc: N.D.

Instrument :
 ECD_P
 ClientSampleId :
 PB165084BL



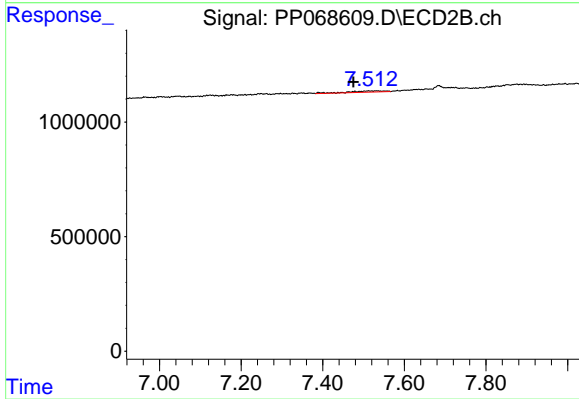
#36 AR-1262-1

R.T.: 7.247 min
 Delta R.T.: 0.034 min
 Response: 144414
 Conc: 1.86 ng/ml



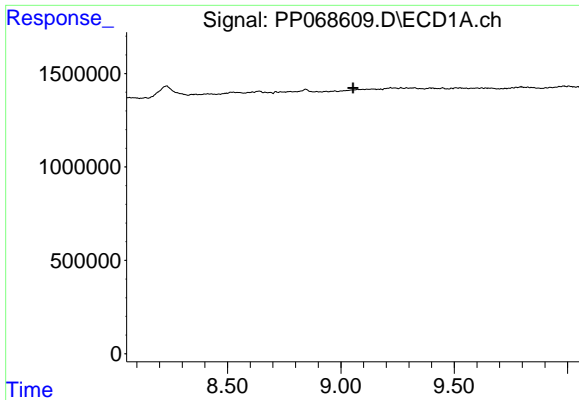
#37 AR-1262-2

R.T.: 0.000 min
 Exp R.T. : 8.714 min
 Response: 0
 Conc: N.D.



#37 AR-1262-2

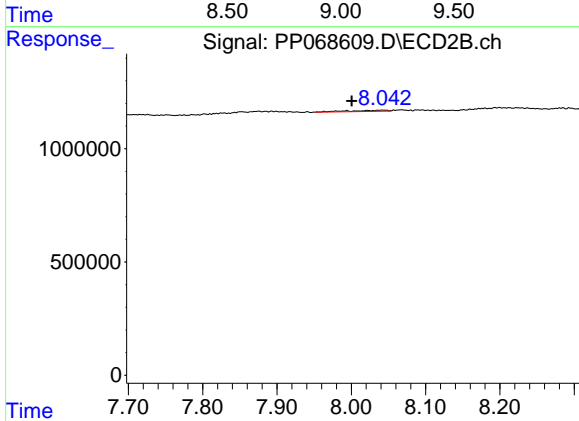
R.T.: 7.512 min
 Delta R.T.: 0.037 min
 Response: 324168
 Conc: 4.59 ng/ml



#38 AR-1262-3

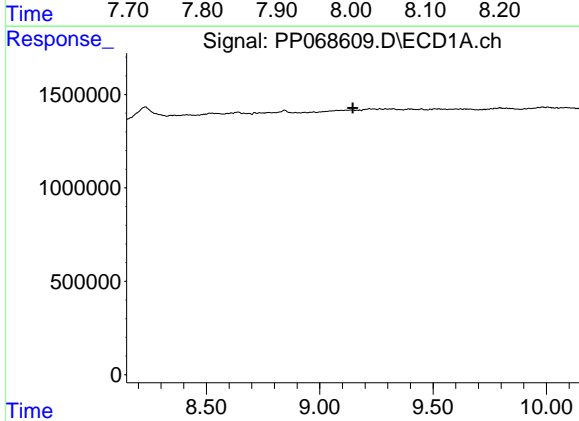
R.T.: 0.000 min
 Exp R.T.: 9.054 min
 Response: 0
 Conc: N.D.

Instrument :
 ECD_P
 ClientSampleId :
 PB165084BL



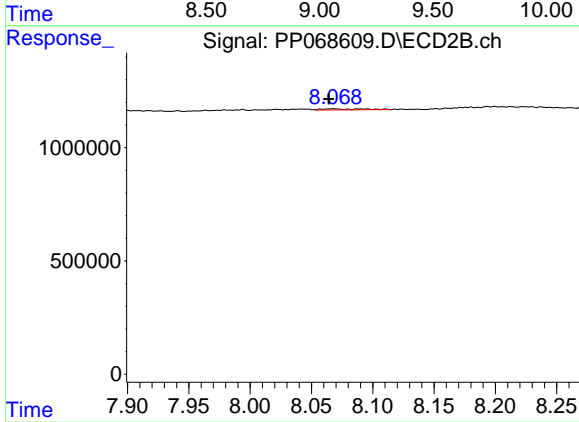
#38 AR-1262-3

R.T.: 8.043 min
 Delta R.T.: 0.043 min
 Response: 186746
 Conc: 3.17 ng/ml



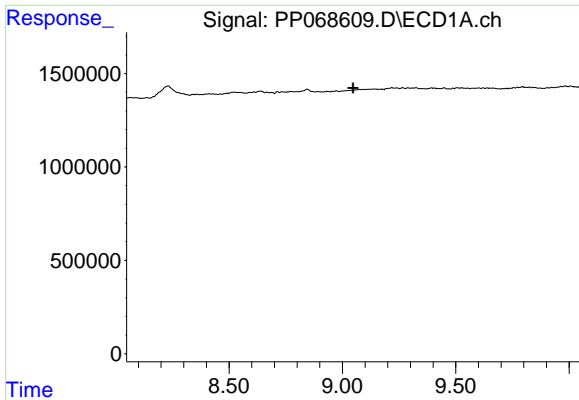
#39 AR-1262-4

R.T.: 0.000 min
 Exp R.T.: 9.146 min
 Response: 0
 Conc: N.D.



#39 AR-1262-4

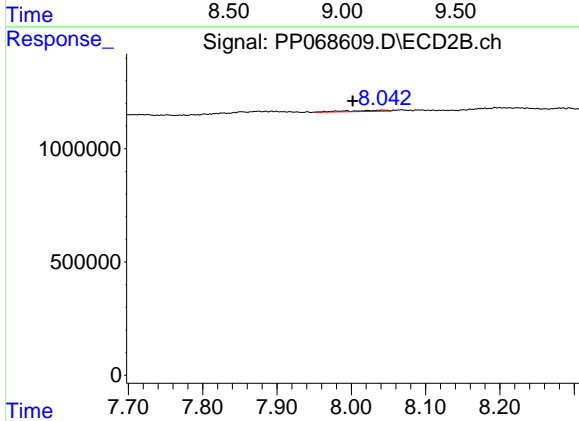
R.T.: 8.068 min
 Delta R.T.: 0.003 min
 Response: 112790
 Conc: 1.09 ng/ml



#41 AR-1268-1

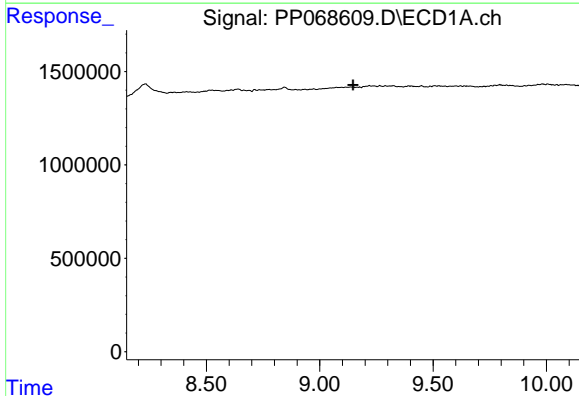
R.T.: 0.000 min
 Exp R.T.: 9.047 min
 Response: 0
 Conc: N.D.

Instrument :
 ECD_P
 ClientSampleId :
 PB165084BL



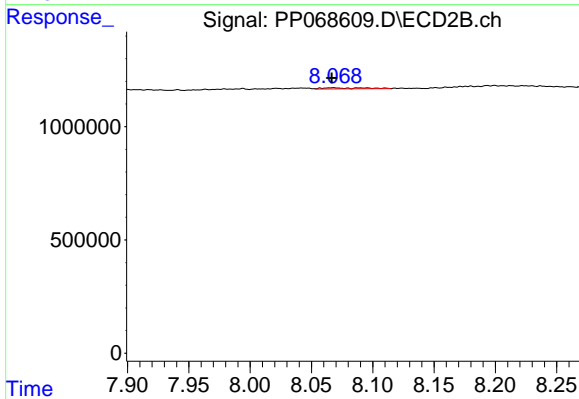
#41 AR-1268-1

R.T.: 8.043 min
 Delta R.T.: 0.041 min
 Response: 186746
 Conc: 1.20 ng/ml



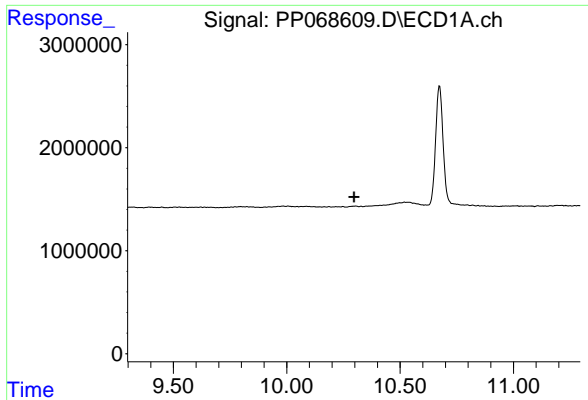
#42 AR-1268-2

R.T.: 0.000 min
 Exp R.T.: 9.147 min
 Response: 0
 Conc: N.D.



#42 AR-1268-2

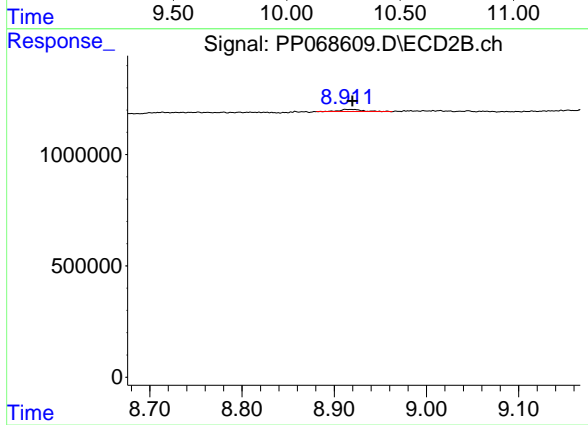
R.T.: 8.068 min
 Delta R.T.: 0.001 min
 Response: 112790
 Conc: 0.80 ng/ml



#45 AR-1268-5

R.T.: 0.000 min
 Exp R.T.: 10.297 min
 Response: 0
 Conc: N.D.

Instrument :
 ECD_P
 ClientSampleId :
 PB165084BL



#45 AR-1268-5

R.T.: 8.916 min
 Delta R.T.: -0.003 min
 Response: 170543
 Conc: 0.45 ng/ml