

Data Path : Z:\pestpcbsrv\HPCHEM1\ECD\_P\Data\PP112023\  
 Data File : PP061753.D  
 Signal(s) : Signal #1: ECD1A.ch Signal #2: ECD2B.ch  
 Acq On : 20 Nov 2023 10:27  
 Operator : YP\AJ  
 Sample : 05462-04DL2 40X  
 Misc :  
 ALS Vial : 9 Sample Multiplier: 1

Instrument :  
 ECD\_P  
 ClientSampleId :

Integration File signal 1: autoint1.e  
 Integration File signal 2: autoint2.e  
 Quant Time: Nov 21 00:16:52 2023  
 Quant Method : Z:\pestpcbsrv\HPCHEM1\ECD\_P\methods\PP111523.M  
 Quant Title : GC EXTRACTABLES  
 QLast Update : Thu Nov 16 04:03:35 2023  
 Response via : Initial Calibration  
 Integrator: ChemStation

Volume Inj. : 2 µl  
 Signal #1 Phase : ZB-MR2 Signal #2 Phase: ZB-MR2  
 Signal #1 Info : 30Mx0.32mmx 0.50µ Signal #2 Info : 30M x 0.32mm x 0.25µm

Compound	RT#1	RT#2	Resp#1	Resp#2	ng/ml	ng/ml
-----						
System Monitoring Compounds						
1) SA Tetrachlo...	4.452	3.729	893981	1612127	0.678	0.766
2) SA Decachlor...	10.241	8.857	918542	1403552	0.910	0.860
Target Compounds						
3) L1 AR-1016-1	5.628	4.841	22209297	27985986	474.691	408.701
4) L1 AR-1016-2	5.650	4.861	31710363	37047920	444.815	391.596
5) L1 AR-1016-3	5.713	5.041	22702688	21851236	502.376	445.946
6) L1 AR-1016-4	5.811	5.083	18855196	17491229	516.744	403.252
7) L1 AR-1016-5	6.108	5.302	20674891	25960834	602.665	490.114
8) L2 AR-1221-1	4.659	3.948	1181632	2030173	73.391	74.861
9) L2 AR-1221-2	4.749	4.035	2156581	2266682	177.550	114.709 #
10) L2 AR-1221-3	4.826	4.114	9022631	11983850	241.991	204.849
11) L3 AR-1232-1	4.826	4.114	9022631	11983850	297.839	253.703
12) L3 AR-1232-2	5.359	4.861	14612046	37047920	844.301	890.229
13) L3 AR-1232-3	5.650	5.041	31710363	21851236	1074.128	1017.598
14) L3 AR-1232-4	5.811	5.127	18855196	20567544	1313.301	968.384 #
15) L3 AR-1232-5	5.903	5.302	15996268	25960834	1224.458	1158.080
16) L4 AR-1242-1	5.628	4.841	22209297	27985986	572.427	492.689
17) L4 AR-1242-2	5.650	4.861	31710363	37047920	542.974	478.150
18) L4 AR-1242-3	5.713	5.041	22702688	21851236	588.305	539.593
19) L4 AR-1242-4	5.811	5.127	18855196	20567544	616.497	467.374
20) L4 AR-1242-5	6.552	5.659	20526613	32442088	665.277	686.424
21) L5 AR-1248-1	5.628	4.841	22209297	27985986	818.754	687.704
22) L5 AR-1248-2	5.903	5.083	15996268	17491229	363.433	289.939
23) L5 AR-1248-3	6.108	5.127	20674891	20567544	425.333	329.800
24) L5 AR-1248-4	6.513	5.302	20758783	25960834	405.605	366.171
25) L5 AR-1248-5	6.552	5.659	20526613	32442088	394.792	361.647
26) L6 AR-1254-1	6.485	5.659	15849317	32442088	273.813	323.121
27) L6 AR-1254-2	6.709	5.810	18667952	9450597	215.953	103.783 #
28) L6 AR-1254-3	7.073	6.222	6093997	13807215	71.647	99.666 #
29) L6 AR-1254-4	7.359	6.452	3338910	4139542	63.784	61.542
30) L6 AR-1254-5	7.780	6.875	6359648	9201497	101.331	78.285
31) L7 AR-1260-1	7.238	6.354	6260466	11234059	90.240	111.673
32) L7 AR-1260-2	7.497	6.543	6045609	8337089	80.708	72.030
33) L7 AR-1260-3	7.857	6.700	3253213	8651216	63.633	78.934
34) L7 AR-1260-4	8.083	7.178	3958606	4806101	66.485	58.632
35) L7 AR-1260-5	8.406	7.421	4385777	7103411	44.378	41.164
36) L8 AR-1262-1	7.916	6.968	1496751	2935690	44.877	55.022
37) L8 AR-1262-2	8.406	7.178	4385777	4806101	37.695	42.296
38) L8 AR-1262-3	8.733	7.709	2400912	1398336	28.680	16.062 #
39) L8 AR-1262-4	8.794f	7.773	1398066	4438920	20.306	29.657 #
40) L8 AR-1262-5	9.476	8.278	761063	1045140	19.224	17.709
41) L9 AR-1268-1	8.733	7.709	2400912	1398336	15.511	5.726 #

Data Path : Z:\pestpcbsrv\HPCHEM1\ECD\_P\Data\PP112023\  
 Data File : PP061753.D  
 Signal(s) : Signal #1: ECD1A.ch Signal #2: ECD2B.ch  
 Acq On : 20 Nov 2023 10:27  
 Operator : YP\AJ  
 Sample : 05462-04DL2 40X  
 Misc :  
 ALS Vial : 9 Sample Multiplier: 1

Instrument :  
 ECD\_P  
 ClientSampleId :

Integration File signal 1: autoint1.e  
 Integration File signal 2: autoint2.e  
 Quant Time: Nov 21 00:16:52 2023  
 Quant Method : Z:\pestpcbsrv\HPCHEM1\ECD\_P\methods\PP111523.M  
 Quant Title : GC EXTRACTABLES  
 QLast Update : Thu Nov 16 04:03:35 2023  
 Response via : Initial Calibration  
 Integrator: ChemStation

Volume Inj. : 2 µl  
 Signal #1 Phase : ZB-MR1 Signal #2 Phase: ZB-MR2  
 Signal #1 Info : 30Mx0.32mmx 0.50µ Signal #2 Info : 30M x 0.32mm x 0.25µm

	Compound	RT#1	RT#2	Resp#1	Resp#2	ng/ml	ng/ml
42)	L9 AR-1268-2	8.794f	7.773	1398066	4438920	9.632	20.265 #
44)	L9 AR-1268-4	9.476	8.278	761063	1045140	17.137	15.219
45)	L9 AR-1268-5	0.000	8.585	0	290292	N.D.	0.502 #

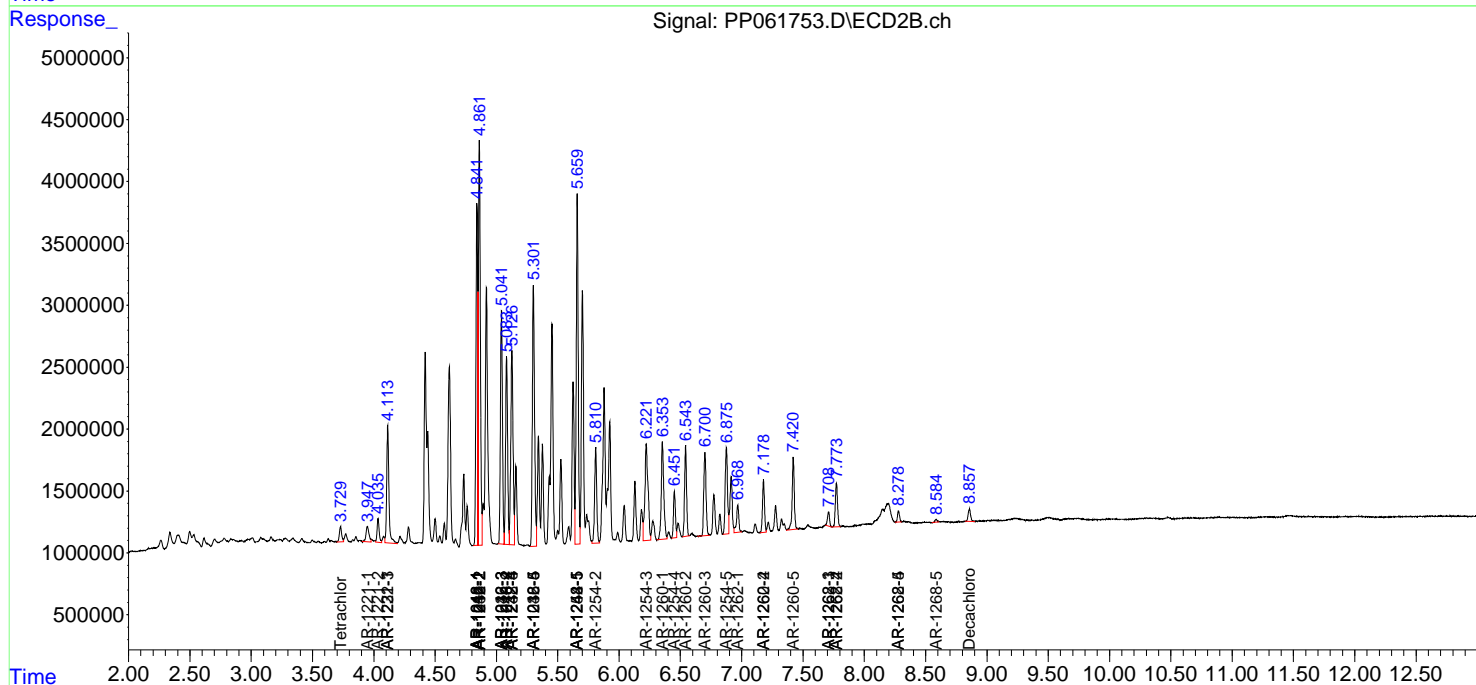
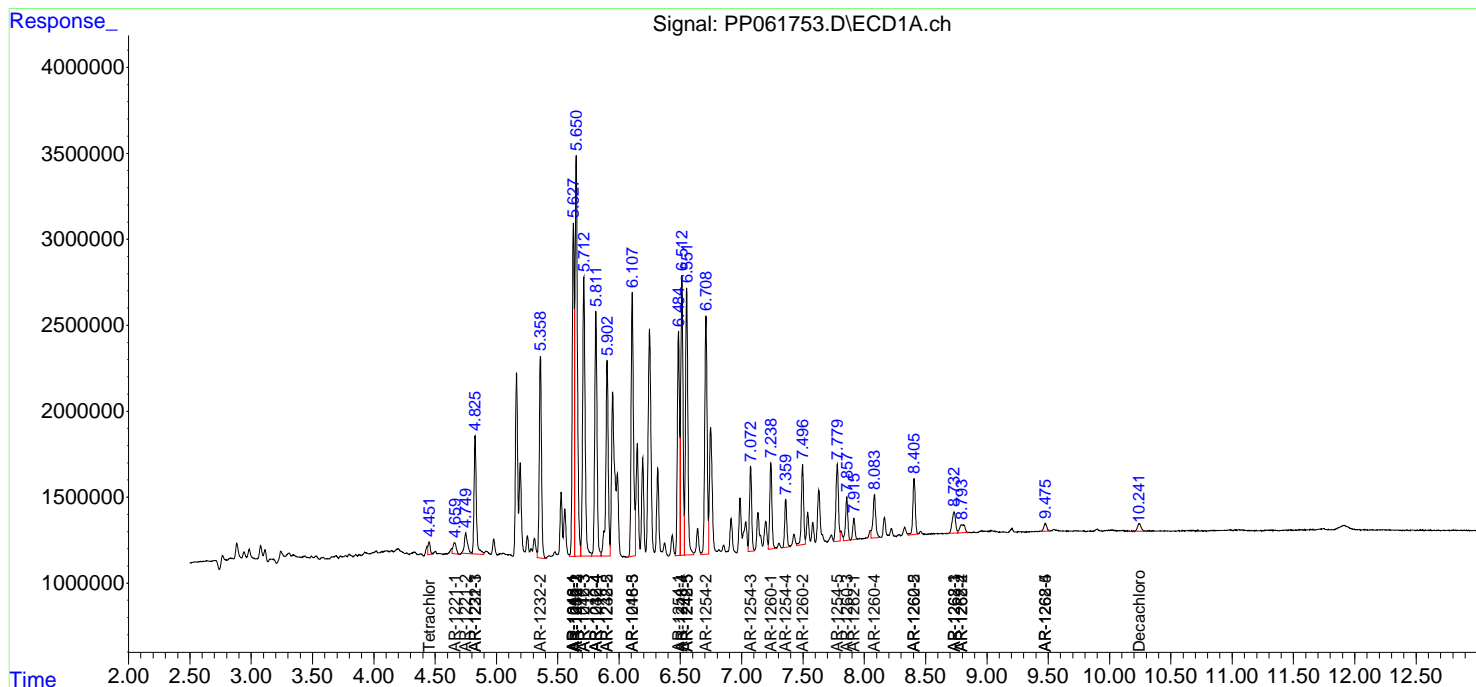
(f)=RT Delta > 1/2 Window (#)=Amounts differ by > 25% (m)=manual int.

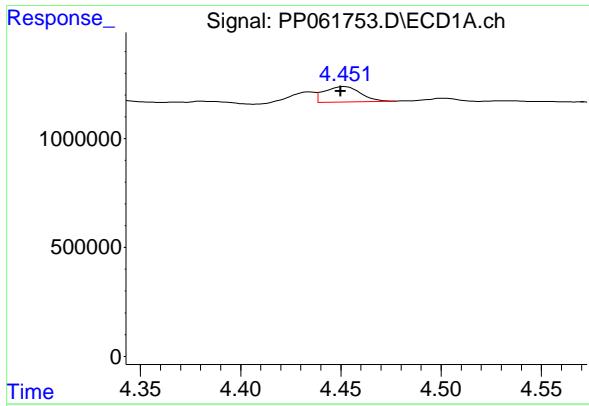
Data Path : Z:\pestpcbsrv\HPCHEM1\ECD\_P\Data\PP112023\  
 Data File : PP061753.D  
 Signal(s) : Signal #1: ECD1A.ch Signal #2: ECD2B.ch  
 Acq On : 20 Nov 2023 10:27  
 Operator : YP\AJ  
 Sample : 05462-04DL2 40X  
 Misc :  
 ALS Vial : 9 Sample Multiplier: 1

Instrument :  
 ECD\_P  
 ClientSampleId :

Integration File signal 1: autoint1.e  
 Integration File signal 2: autoint2.e  
 Quant Time: Nov 21 00:16:52 2023  
 Quant Method : Z:\pestpcbsrv\HPCHEM1\ECD\_P\methods\PP111523.M  
 Quant Title : GC EXTRACTABLES  
 QLast Update : Thu Nov 16 04:03:35 2023  
 Response via : Initial Calibration  
 Integrator: ChemStation

Volume Inj. : 2 µl  
 Signal #1 Phase : ZB-MR1 Signal #2 Phase: ZB-MR2  
 Signal #1 Info : 30Mx0.32mmx 0.50µ Signal #2 Info : 30M x 0.32mm x 0.25µm

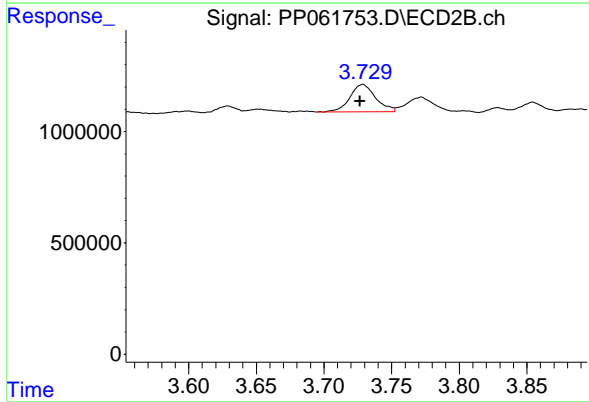




#1 Tetrachloro-m-xylene

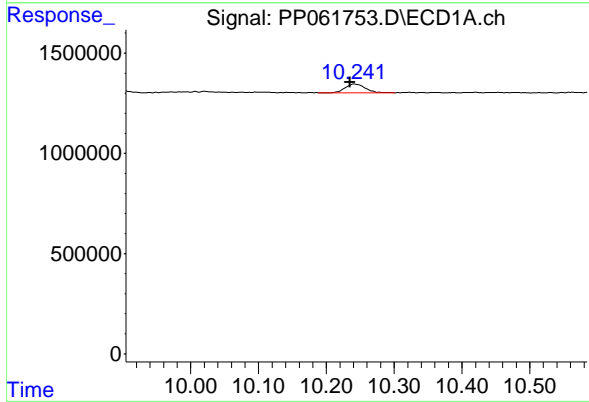
R.T.: 4.452 min  
 Delta R.T.: 0.002 min  
 Response: 893981  
 Conc: 0.68 ng/ml

Instrument :  
 ECD\_P  
 ClientSampleId :



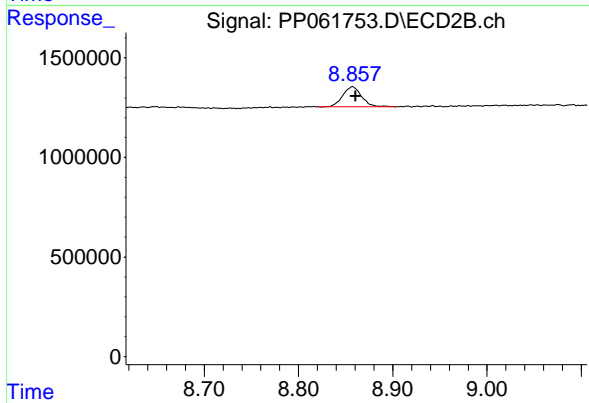
#1 Tetrachloro-m-xylene

R.T.: 3.729 min  
 Delta R.T.: 0.002 min  
 Response: 1612127  
 Conc: 0.77 ng/ml



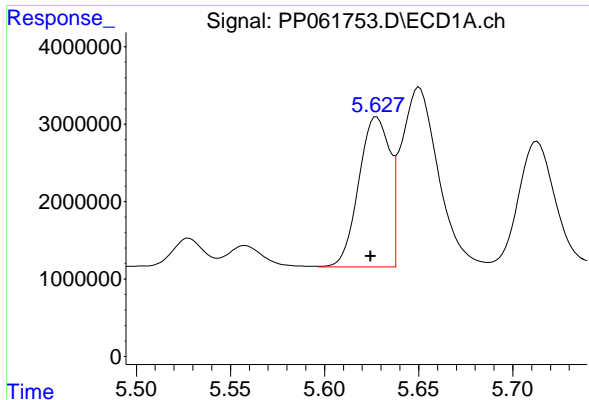
#2 Decachlorobiphenyl

R.T.: 10.241 min  
 Delta R.T.: 0.006 min  
 Response: 918542  
 Conc: 0.91 ng/ml



#2 Decachlorobiphenyl

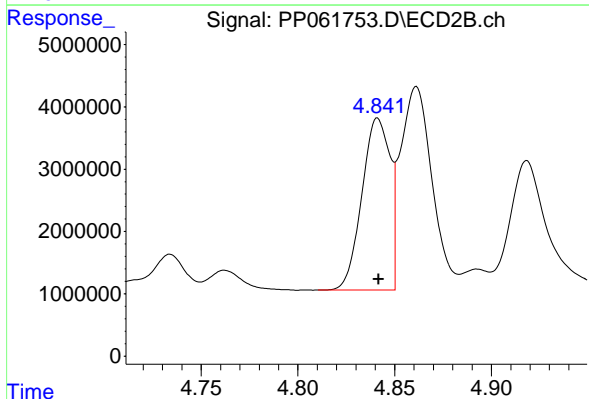
R.T.: 8.857 min  
 Delta R.T.: -0.003 min  
 Response: 1403552  
 Conc: 0.86 ng/ml



#3 AR-1016-1

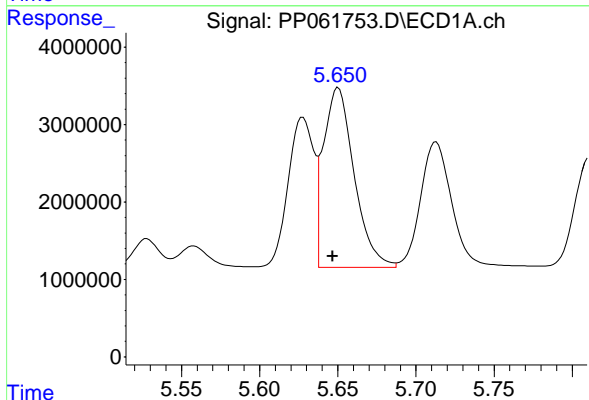
R.T.: 5.628 min  
 Delta R.T.: 0.003 min  
 Response: 22209297  
 Conc: 474.69 ng/ml

Instrument :  
 ECD\_P  
 ClientSampleId :



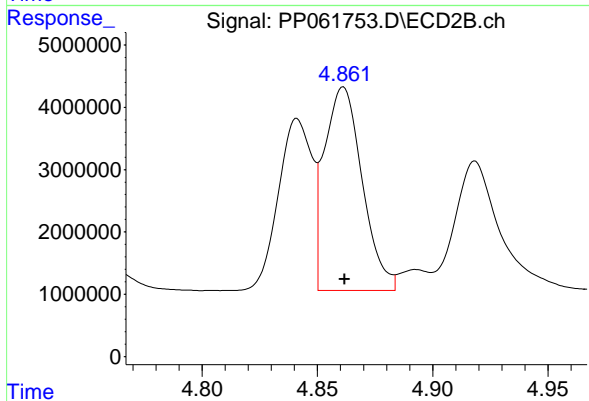
#3 AR-1016-1

R.T.: 4.841 min  
 Delta R.T.: 0.000 min  
 Response: 27985986  
 Conc: 408.70 ng/ml



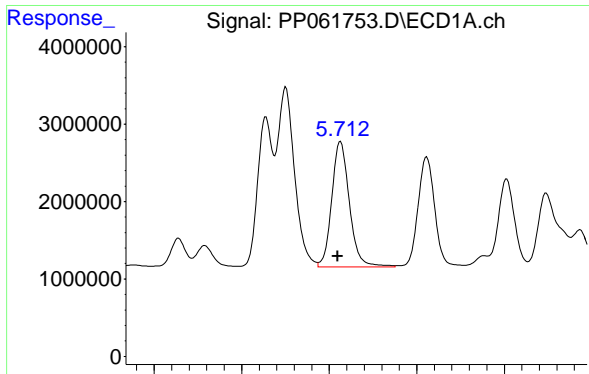
#4 AR-1016-2

R.T.: 5.650 min  
 Delta R.T.: 0.004 min  
 Response: 31710363  
 Conc: 444.82 ng/ml



#4 AR-1016-2

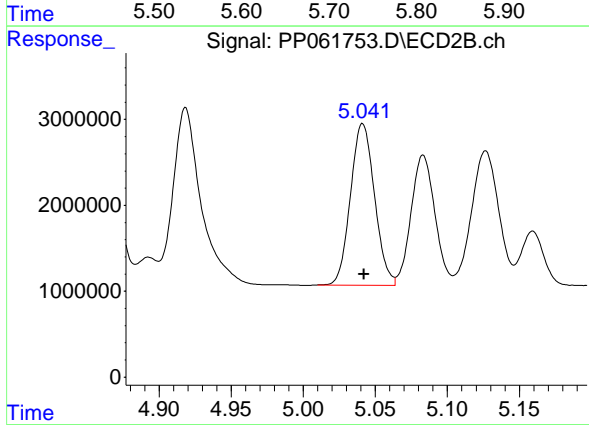
R.T.: 4.861 min  
 Delta R.T.: 0.000 min  
 Response: 37047920  
 Conc: 391.60 ng/ml



#5 AR-1016-3

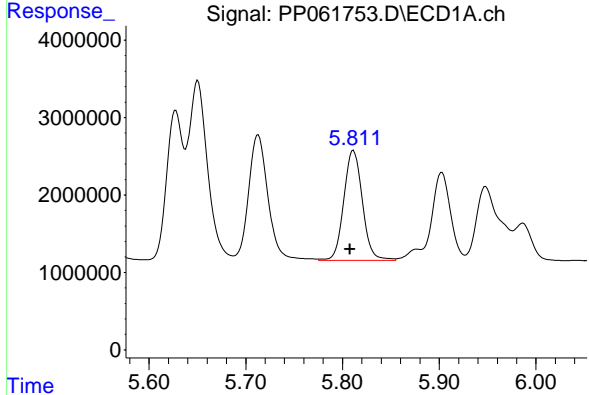
R.T.: 5.713 min  
 Delta R.T.: 0.003 min  
 Response: 22702688  
 Conc: 502.38 ng/ml

Instrument :  
 ECD\_P  
 ClientSampleId :



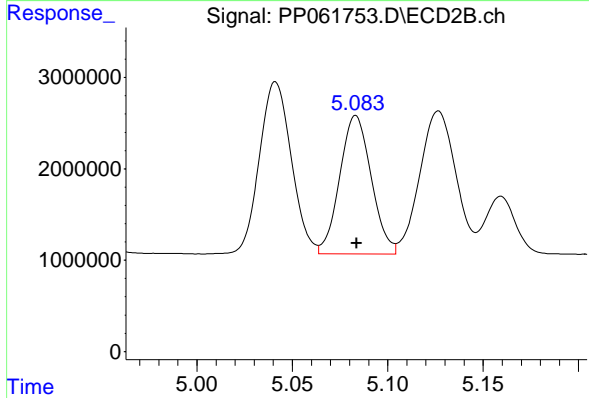
#5 AR-1016-3

R.T.: 5.041 min  
 Delta R.T.: 0.000 min  
 Response: 21851236  
 Conc: 445.95 ng/ml



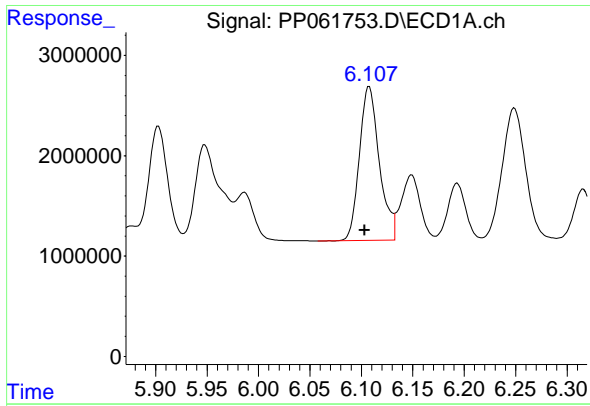
#6 AR-1016-4

R.T.: 5.811 min  
 Delta R.T.: 0.003 min  
 Response: 18855196  
 Conc: 516.74 ng/ml



#6 AR-1016-4

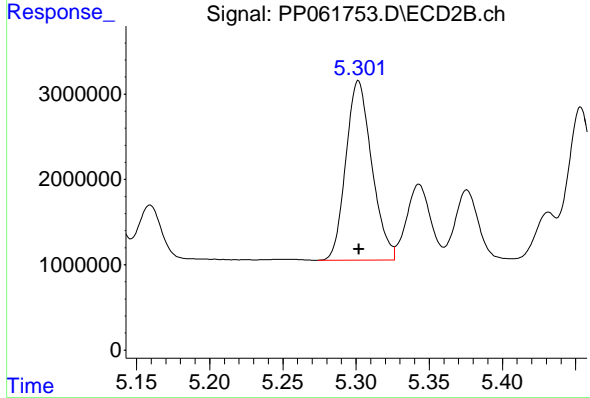
R.T.: 5.083 min  
 Delta R.T.: 0.000 min  
 Response: 17491229  
 Conc: 403.25 ng/ml



#7 AR-1016-5

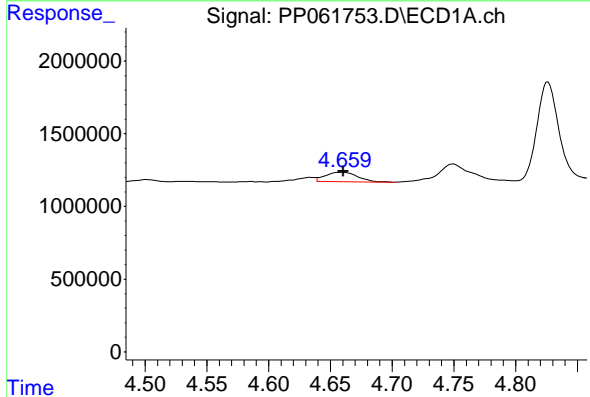
R.T.: 6.108 min  
 Delta R.T.: 0.004 min  
 Response: 20674891  
 Conc: 602.67 ng/ml

Instrument :  
 ECD\_P  
 ClientSampleId :



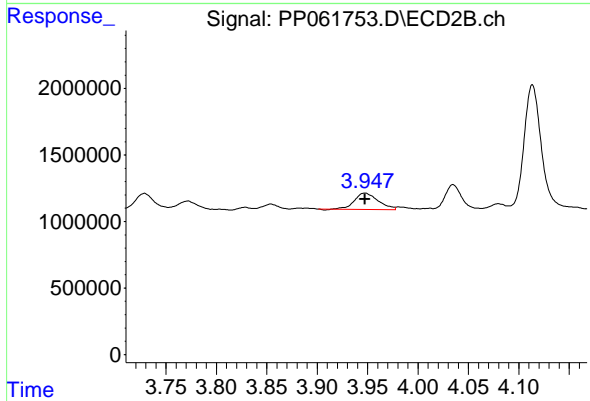
#7 AR-1016-5

R.T.: 5.302 min  
 Delta R.T.: 0.000 min  
 Response: 25960834  
 Conc: 490.11 ng/ml



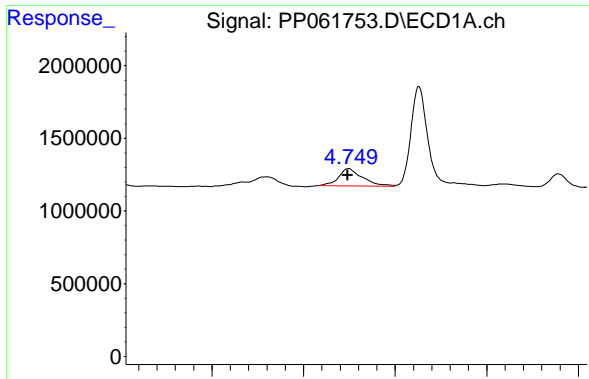
#8 AR-1221-1

R.T.: 4.659 min  
 Delta R.T.: -0.001 min  
 Response: 1181632  
 Conc: 73.39 ng/ml



#8 AR-1221-1

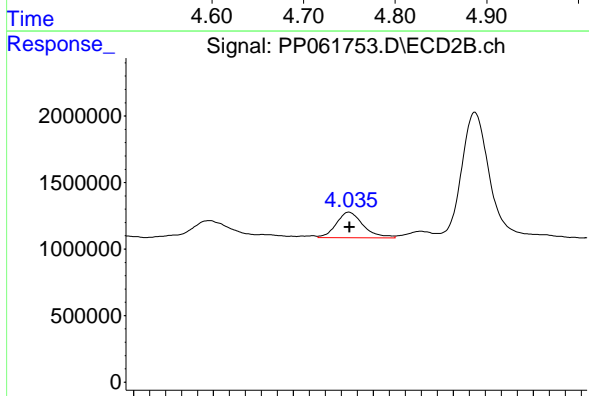
R.T.: 3.948 min  
 Delta R.T.: 0.000 min  
 Response: 2030173  
 Conc: 74.86 ng/ml



#9 AR-1221-2

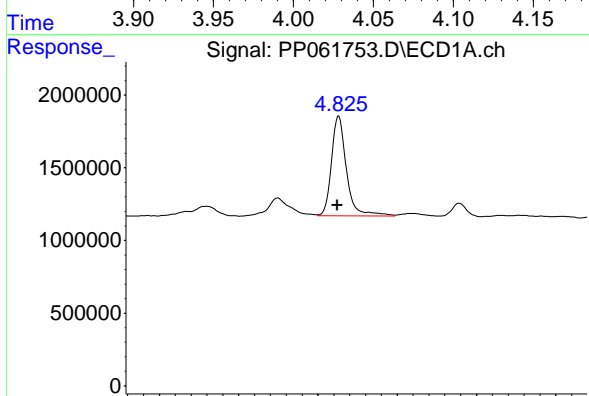
R.T.: 4.749 min  
 Delta R.T.: 0.001 min  
 Response: 2156581  
 Conc: 177.55 ng/ml

Instrument :  
 ECD\_P  
 ClientSampleId :



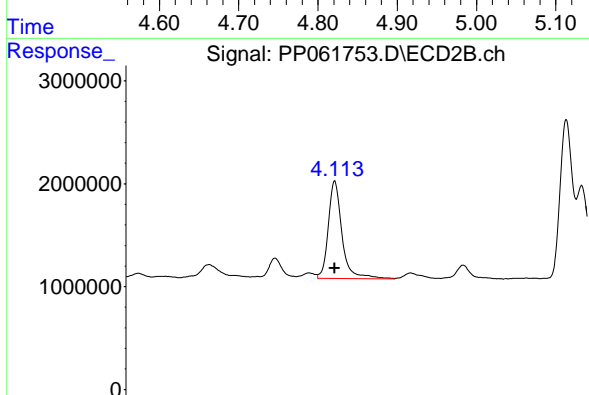
#9 AR-1221-2

R.T.: 4.035 min  
 Delta R.T.: 0.000 min  
 Response: 2266682  
 Conc: 114.71 ng/ml



#10 AR-1221-3

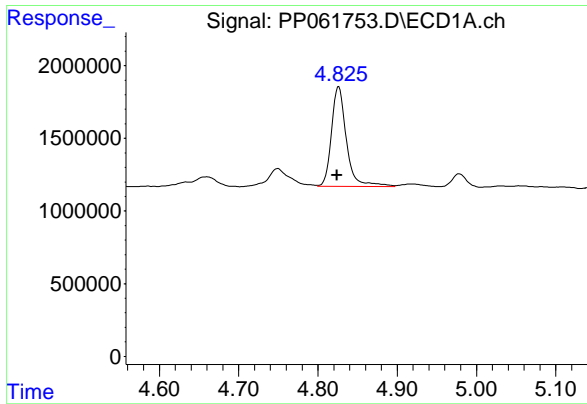
R.T.: 4.826 min  
 Delta R.T.: 0.002 min  
 Response: 9022631  
 Conc: 241.99 ng/ml



#10 AR-1221-3

R.T.: 4.114 min  
 Delta R.T.: 0.000 min  
 Response: 11983850  
 Conc: 204.85 ng/ml

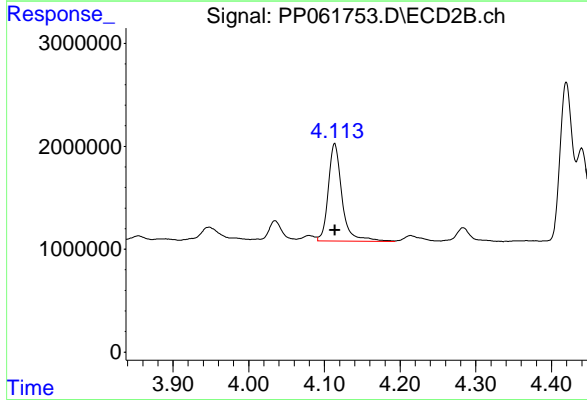




#11 AR-1232-1

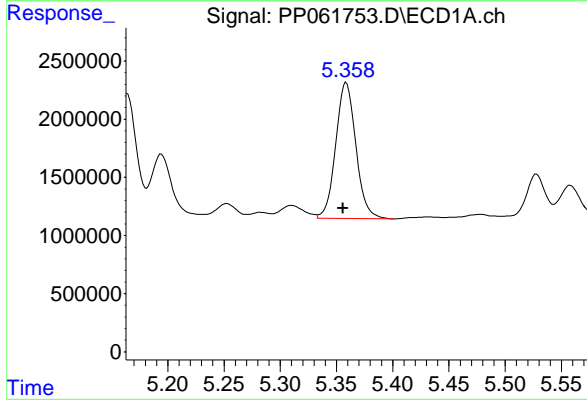
R.T.: 4.826 min  
 Delta R.T.: 0.002 min  
 Response: 9022631  
 Conc: 297.84 ng/ml

Instrument :  
 ECD\_P  
 ClientSampleId :



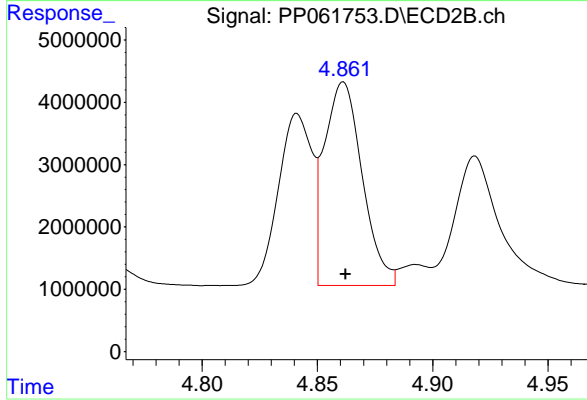
#11 AR-1232-1

R.T.: 4.114 min  
 Delta R.T.: 0.000 min  
 Response: 11983850  
 Conc: 253.70 ng/ml



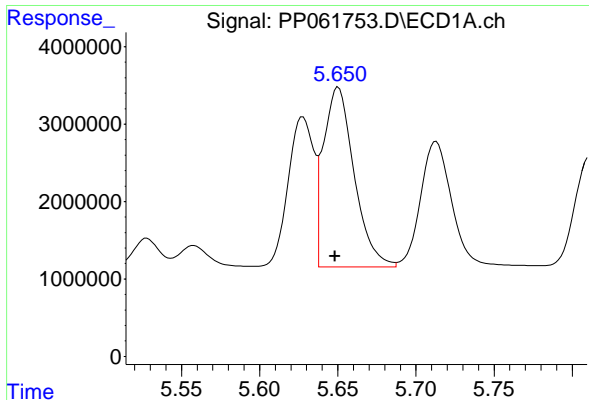
#12 AR-1232-2

R.T.: 5.359 min  
 Delta R.T.: 0.003 min  
 Response: 14612046  
 Conc: 844.30 ng/ml



#12 AR-1232-2

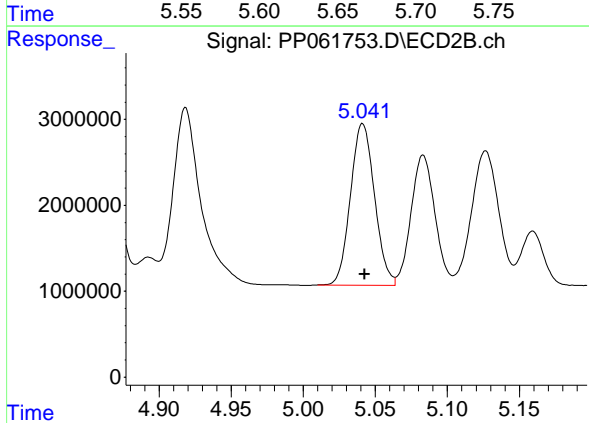
R.T.: 4.861 min  
 Delta R.T.: -0.001 min  
 Response: 37047920  
 Conc: 890.23 ng/ml



#13 AR-1232-3

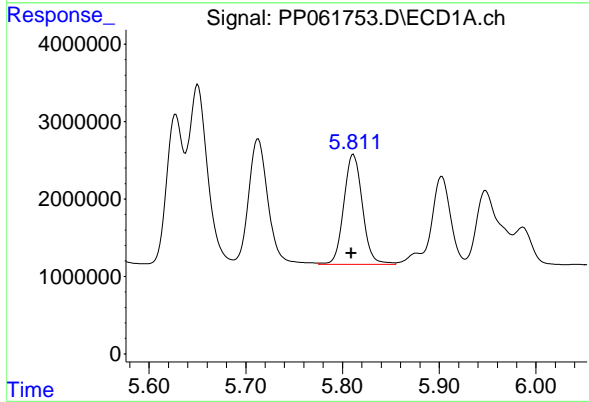
R.T.: 5.650 min  
 Delta R.T.: 0.002 min  
 Response: 31710363  
 Conc: 1074.13 ng/ml

Instrument :  
 ECD\_P  
 ClientSampleId :



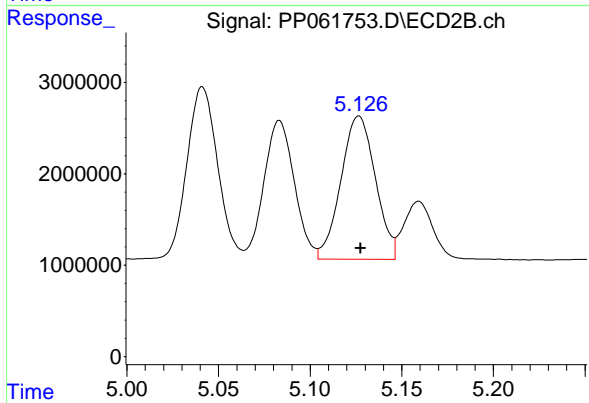
#13 AR-1232-3

R.T.: 5.041 min  
 Delta R.T.: -0.001 min  
 Response: 21851236  
 Conc: 1017.60 ng/ml



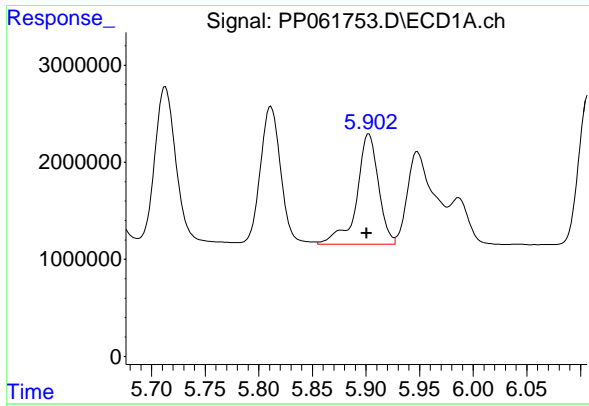
#14 AR-1232-4

R.T.: 5.811 min  
 Delta R.T.: 0.002 min  
 Response: 18855196  
 Conc: 1313.30 ng/ml



#14 AR-1232-4

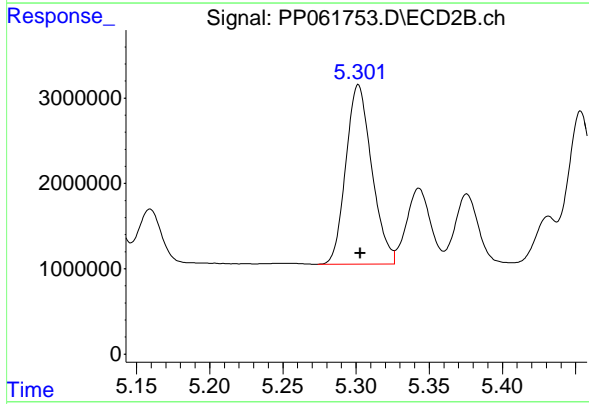
R.T.: 5.127 min  
 Delta R.T.: 0.000 min  
 Response: 20567544  
 Conc: 968.38 ng/ml



#15 AR-1232-5

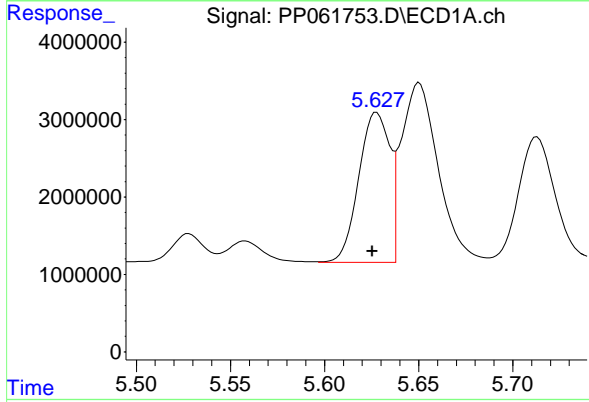
R.T.: 5.903 min  
 Delta R.T.: 0.002 min  
 Response: 15996268  
 Conc: 1224.46 ng/ml

Instrument :  
 ECD\_P  
 ClientSampleId :



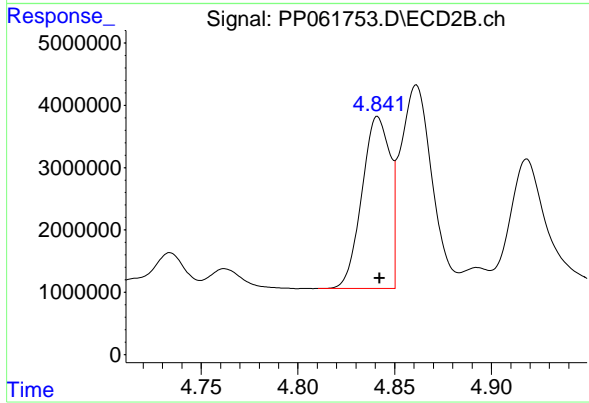
#15 AR-1232-5

R.T.: 5.302 min  
 Delta R.T.: -0.001 min  
 Response: 25960834  
 Conc: 1158.08 ng/ml



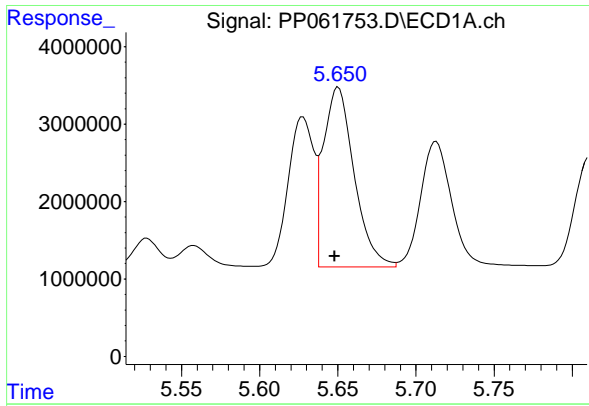
#16 AR-1242-1

R.T.: 5.628 min  
 Delta R.T.: 0.002 min  
 Response: 22209297  
 Conc: 572.43 ng/ml



#16 AR-1242-1

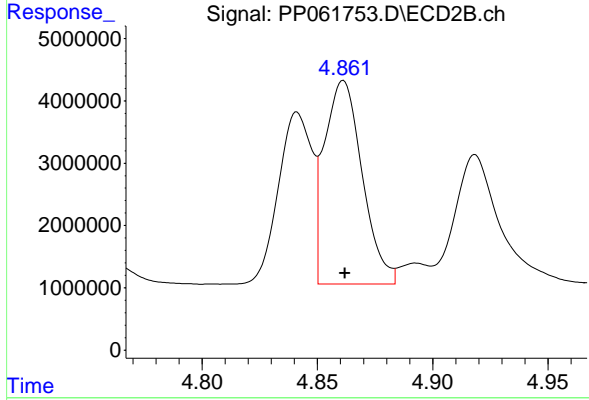
R.T.: 4.841 min  
 Delta R.T.: 0.000 min  
 Response: 27985986  
 Conc: 492.69 ng/ml



#17 AR-1242-2

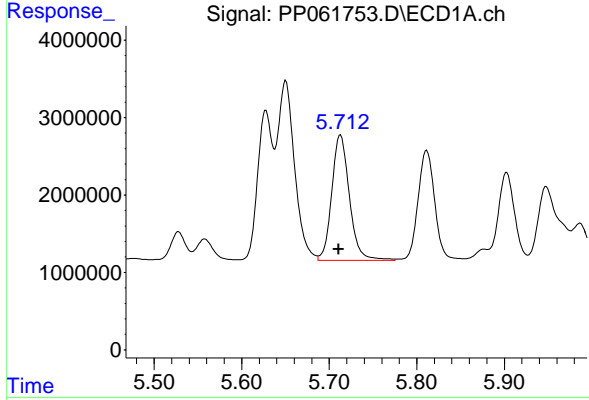
R.T.: 5.650 min  
 Delta R.T.: 0.002 min  
 Response: 31710363  
 Conc: 542.97 ng/ml

Instrument :  
 ECD\_P  
 ClientSampleId :



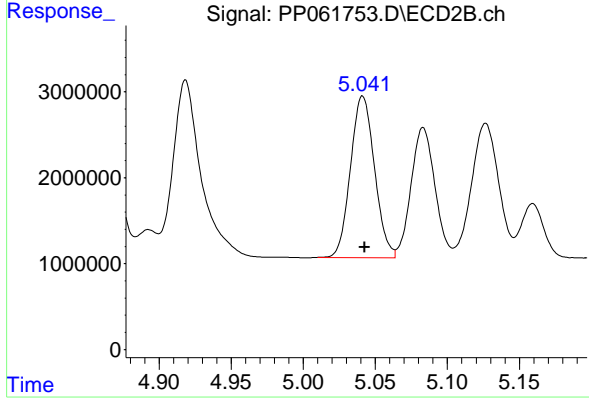
#17 AR-1242-2

R.T.: 4.861 min  
 Delta R.T.: 0.000 min  
 Response: 37047920  
 Conc: 478.15 ng/ml



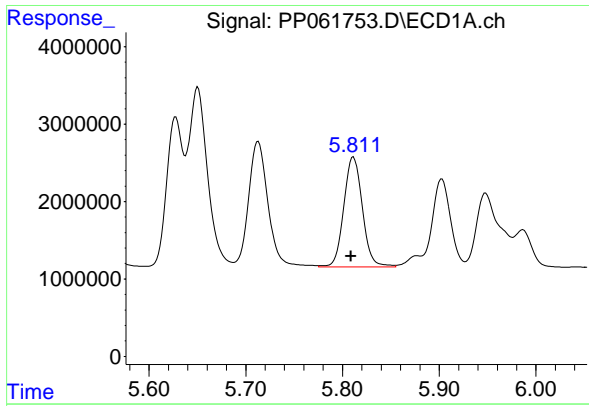
#18 AR-1242-3

R.T.: 5.713 min  
 Delta R.T.: 0.002 min  
 Response: 22702688  
 Conc: 588.31 ng/ml



#18 AR-1242-3

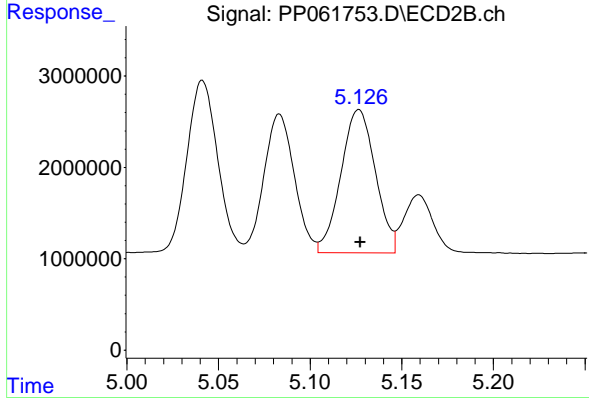
R.T.: 5.041 min  
 Delta R.T.: -0.001 min  
 Response: 21851236  
 Conc: 539.59 ng/ml



#19 AR-1242-4

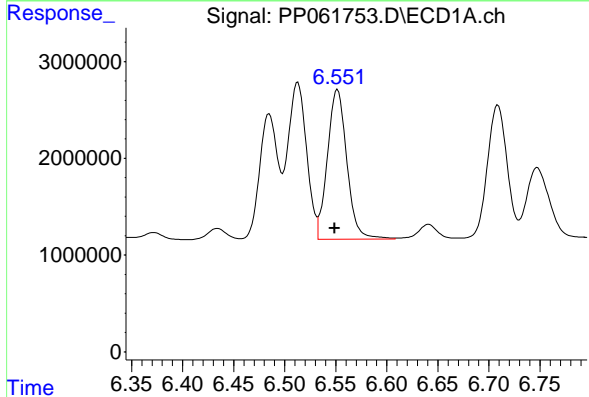
R.T.: 5.811 min  
 Delta R.T.: 0.003 min  
 Response: 18855196  
 Conc: 616.50 ng/ml

Instrument :  
 ECD\_P  
 ClientSampleId :



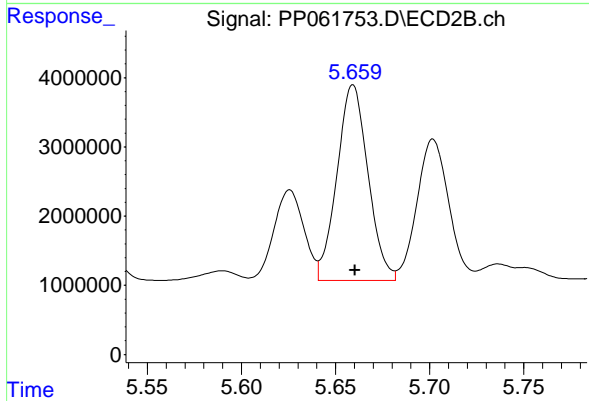
#19 AR-1242-4

R.T.: 5.127 min  
 Delta R.T.: 0.000 min  
 Response: 20567544  
 Conc: 467.37 ng/ml



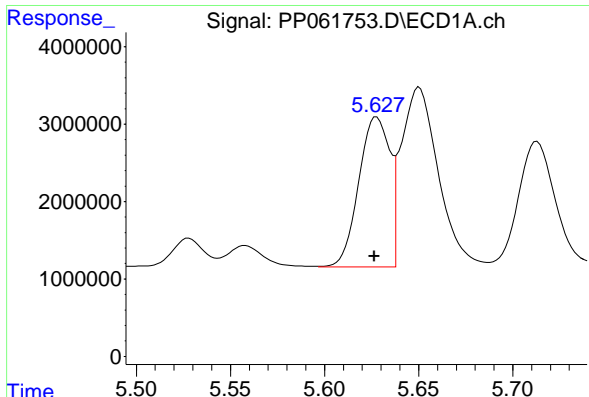
#20 AR-1242-5

R.T.: 6.552 min  
 Delta R.T.: 0.003 min  
 Response: 20526613  
 Conc: 665.28 ng/ml



#20 AR-1242-5

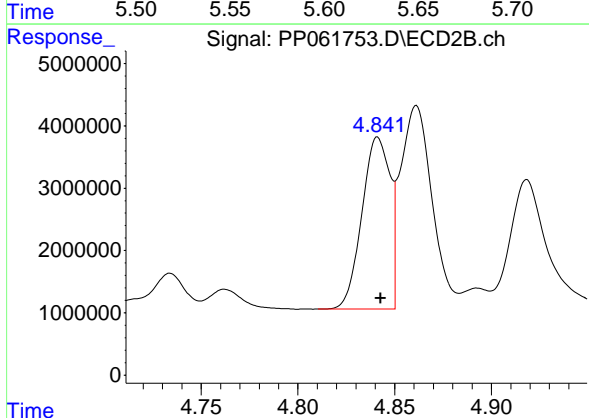
R.T.: 5.659 min  
 Delta R.T.: -0.001 min  
 Response: 32442088  
 Conc: 686.42 ng/ml



#21 AR-1248-1

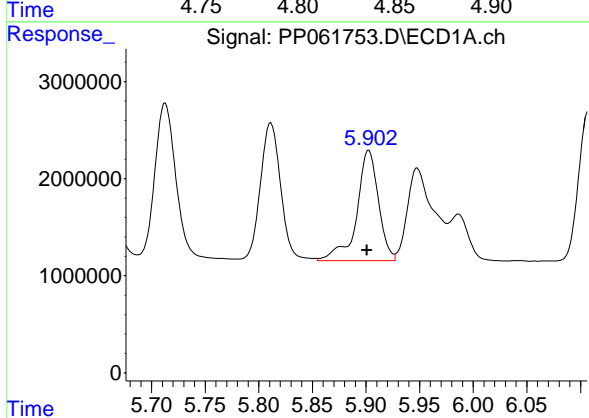
R.T.: 5.628 min  
 Delta R.T.: 0.001 min  
 Response: 22209297  
 Conc: 818.75 ng/ml

Instrument :  
 ECD\_P  
 ClientSampleId :



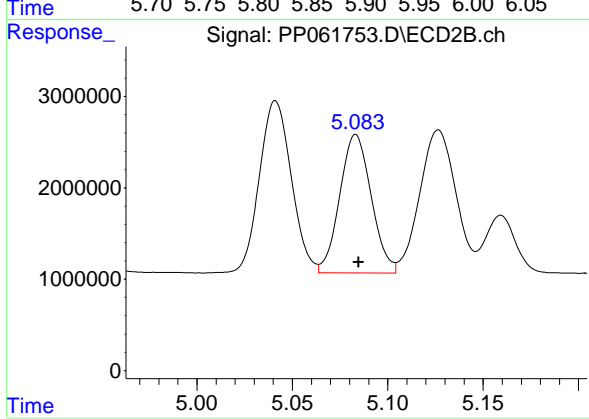
#21 AR-1248-1

R.T.: 4.841 min  
 Delta R.T.: -0.002 min  
 Response: 27985986  
 Conc: 687.70 ng/ml



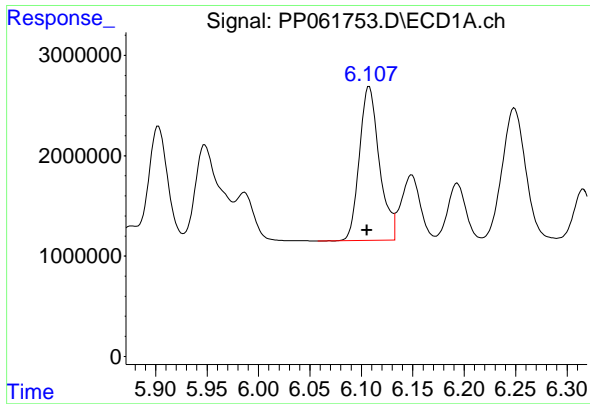
#22 AR-1248-2

R.T.: 5.903 min  
 Delta R.T.: 0.002 min  
 Response: 15996268  
 Conc: 363.43 ng/ml



#22 AR-1248-2

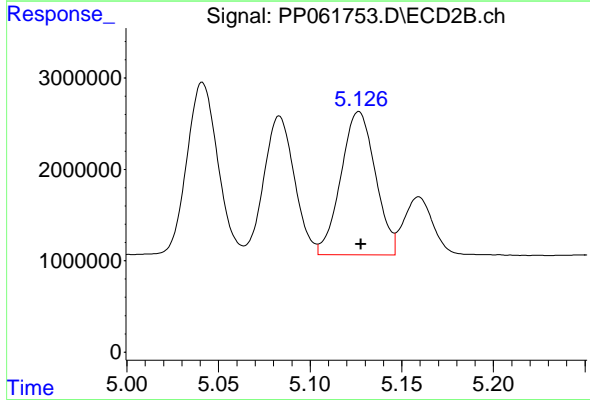
R.T.: 5.083 min  
 Delta R.T.: -0.002 min  
 Response: 17491229  
 Conc: 289.94 ng/ml



#23 AR-1248-3

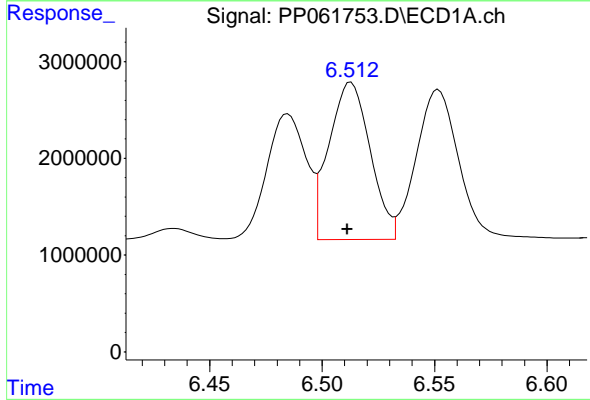
R.T.: 6.108 min  
 Delta R.T.: 0.002 min  
 Response: 20674891  
 Conc: 425.33 ng/ml

Instrument :  
 ECD\_P  
 ClientSampleId :



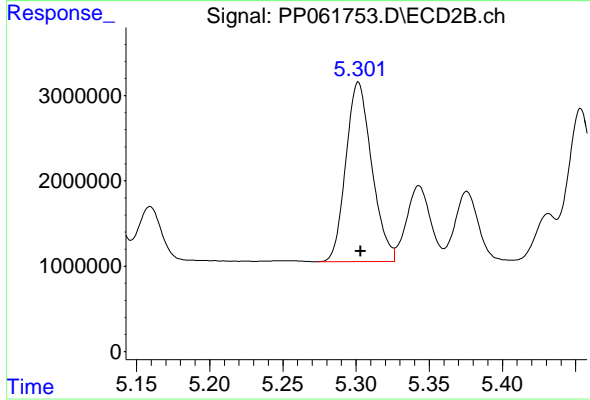
#23 AR-1248-3

R.T.: 5.127 min  
 Delta R.T.: -0.001 min  
 Response: 20567544  
 Conc: 329.80 ng/ml



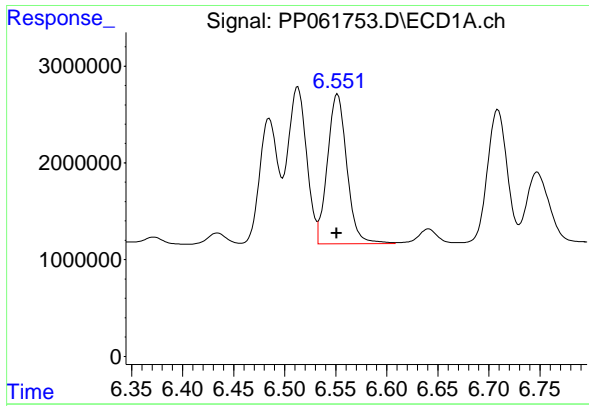
#24 AR-1248-4

R.T.: 6.513 min  
 Delta R.T.: 0.002 min  
 Response: 20758783  
 Conc: 405.61 ng/ml



#24 AR-1248-4

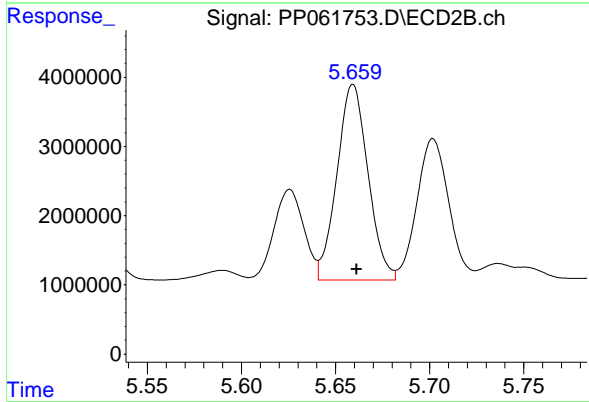
R.T.: 5.302 min  
 Delta R.T.: -0.002 min  
 Response: 25960834  
 Conc: 366.17 ng/ml



#25 AR-1248-5

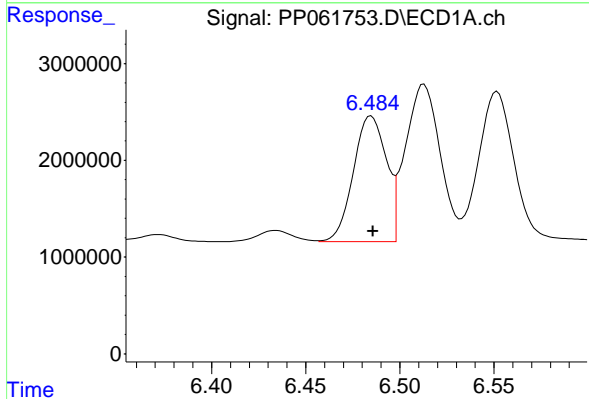
R.T.: 6.552 min  
 Delta R.T.: 0.000 min  
 Response: 20526613  
 Conc: 394.79 ng/ml

Instrument :  
 ECD\_P  
 ClientSampleId :



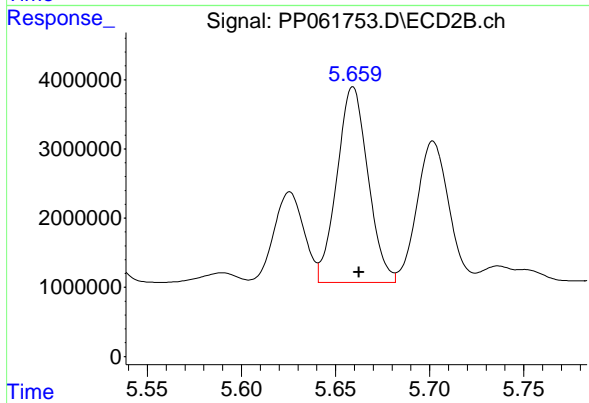
#25 AR-1248-5

R.T.: 5.659 min  
 Delta R.T.: -0.002 min  
 Response: 32442088  
 Conc: 361.65 ng/ml



#26 AR-1254-1

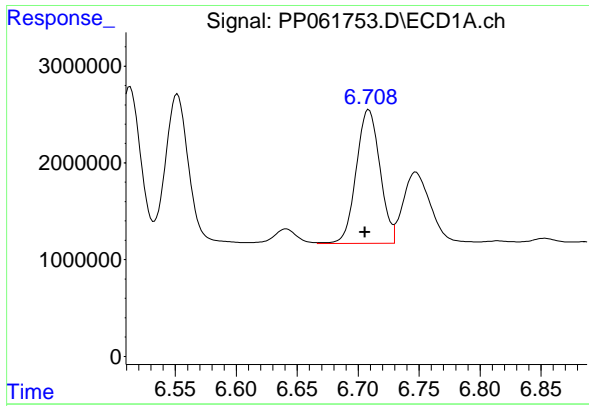
R.T.: 6.485 min  
 Delta R.T.: 0.000 min  
 Response: 15849317  
 Conc: 273.81 ng/ml



#26 AR-1254-1

R.T.: 5.659 min  
 Delta R.T.: -0.003 min  
 Response: 32442088  
 Conc: 323.12 ng/ml

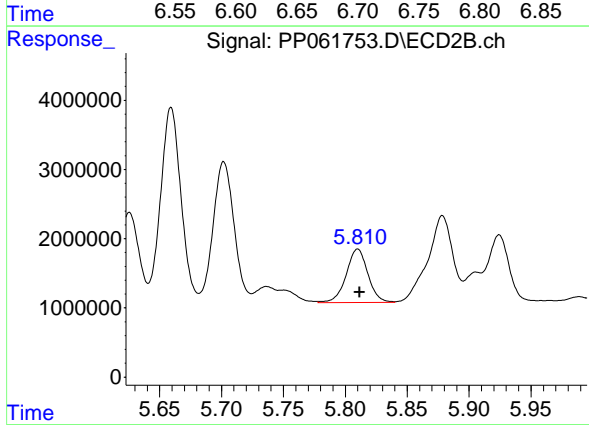




#27 AR-1254-2

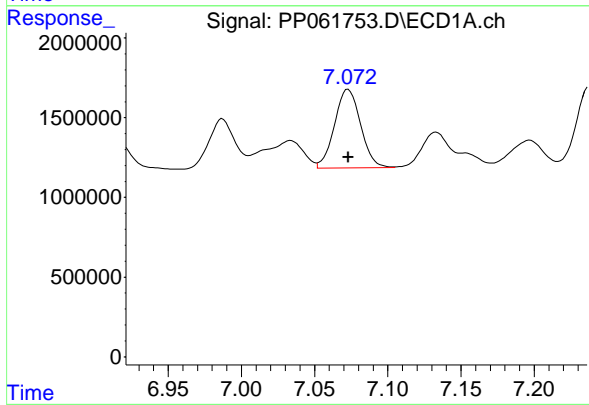
R.T.: 6.709 min  
 Delta R.T.: 0.003 min  
 Response: 18667952  
 Conc: 215.95 ng/ml

Instrument :  
 ECD\_P  
 ClientSampleId :



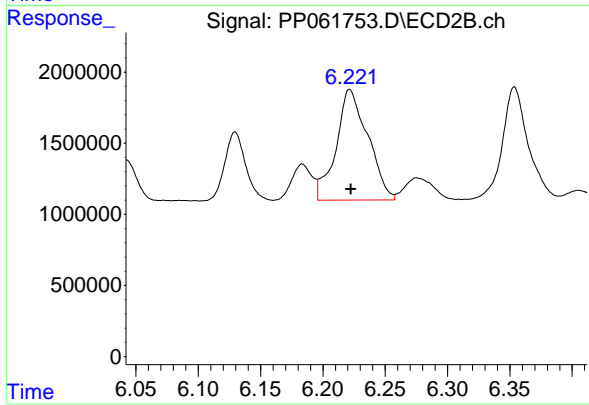
#27 AR-1254-2

R.T.: 5.810 min  
 Delta R.T.: -0.002 min  
 Response: 9450597  
 Conc: 103.78 ng/ml



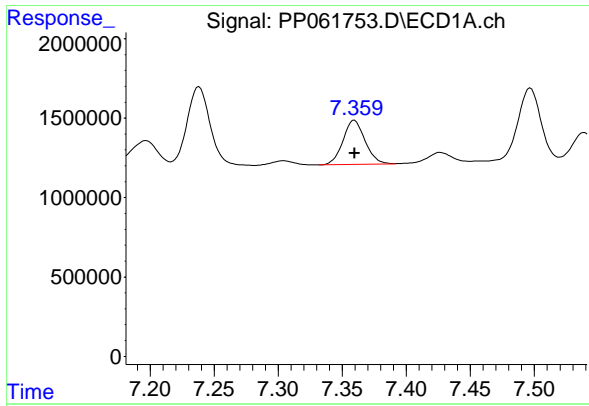
#28 AR-1254-3

R.T.: 7.073 min  
 Delta R.T.: 0.000 min  
 Response: 6093997  
 Conc: 71.65 ng/ml



#28 AR-1254-3

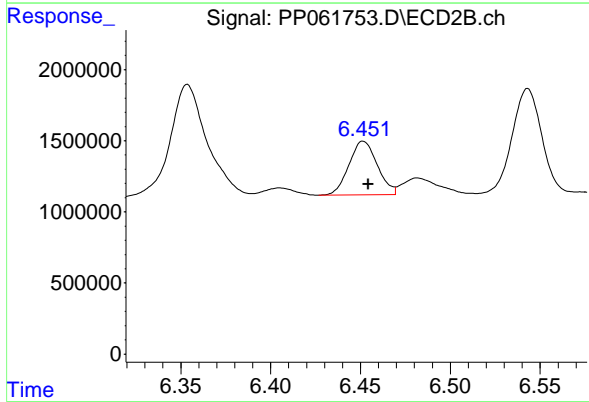
R.T.: 6.222 min  
 Delta R.T.: 0.000 min  
 Response: 13807215  
 Conc: 99.67 ng/ml



#29 AR-1254-4

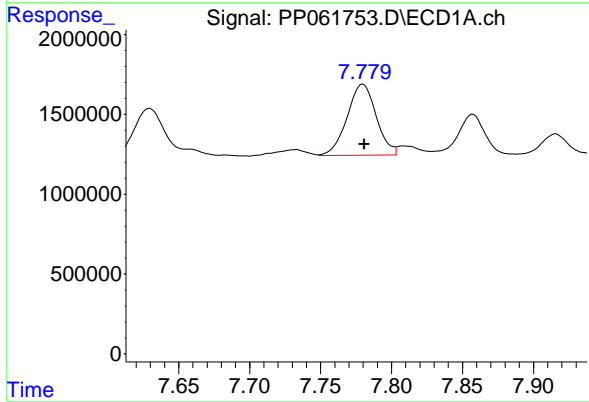
R.T.: 7.359 min  
 Delta R.T.: 0.000 min  
 Response: 3338910  
 Conc: 63.78 ng/ml

Instrument :  
 ECD\_P  
 ClientSampleId :



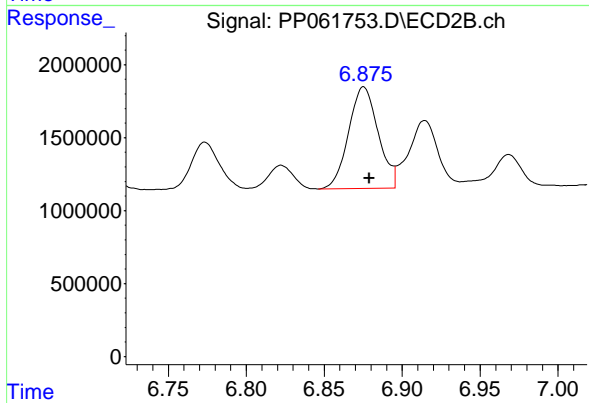
#29 AR-1254-4

R.T.: 6.452 min  
 Delta R.T.: -0.003 min  
 Response: 4139542  
 Conc: 61.54 ng/ml



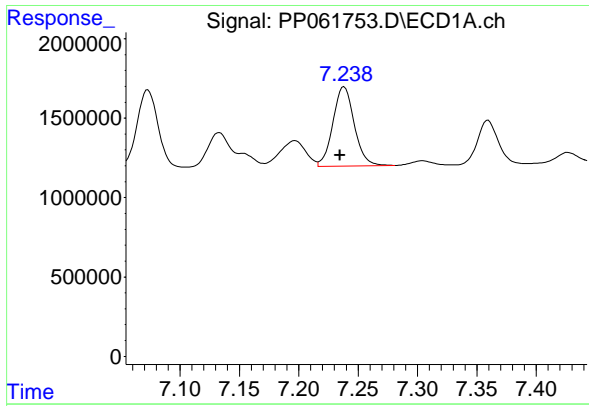
#30 AR-1254-5

R.T.: 7.780 min  
 Delta R.T.: 0.000 min  
 Response: 6359648  
 Conc: 101.33 ng/ml



#30 AR-1254-5

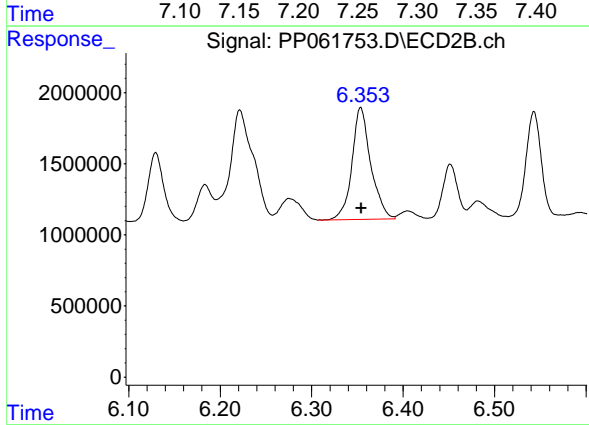
R.T.: 6.875 min  
 Delta R.T.: -0.004 min  
 Response: 9201497  
 Conc: 78.28 ng/ml



#31 AR-1260-1

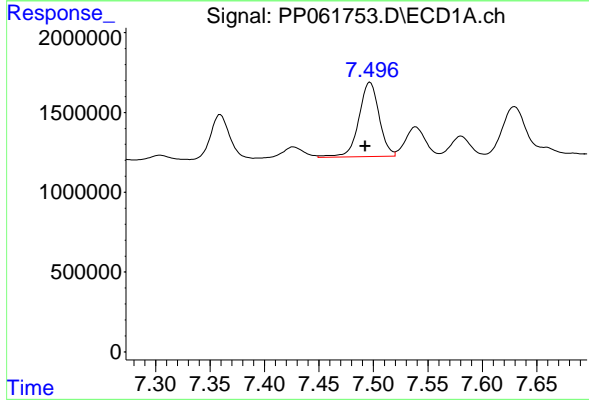
R.T.: 7.238 min  
 Delta R.T.: 0.004 min  
 Response: 6260466  
 Conc: 90.24 ng/ml

Instrument :  
 ECD\_P  
 ClientSampleId :



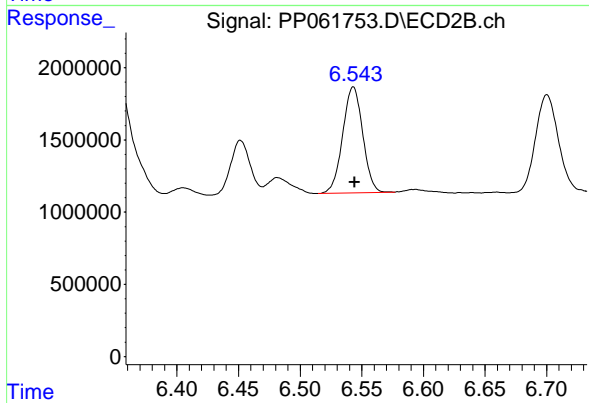
#31 AR-1260-1

R.T.: 6.354 min  
 Delta R.T.: 0.000 min  
 Response: 11234059  
 Conc: 111.67 ng/ml



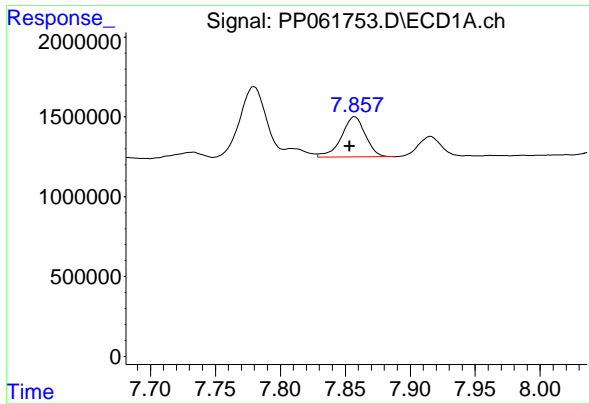
#32 AR-1260-2

R.T.: 7.497 min  
 Delta R.T.: 0.004 min  
 Response: 6045609  
 Conc: 80.71 ng/ml



#32 AR-1260-2

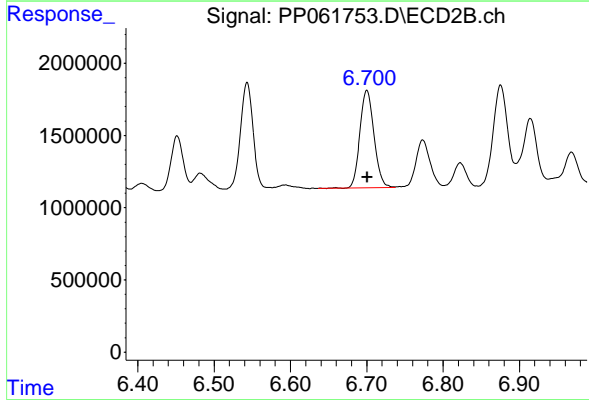
R.T.: 6.543 min  
 Delta R.T.: 0.000 min  
 Response: 8337089  
 Conc: 72.03 ng/ml



#33 AR-1260-3

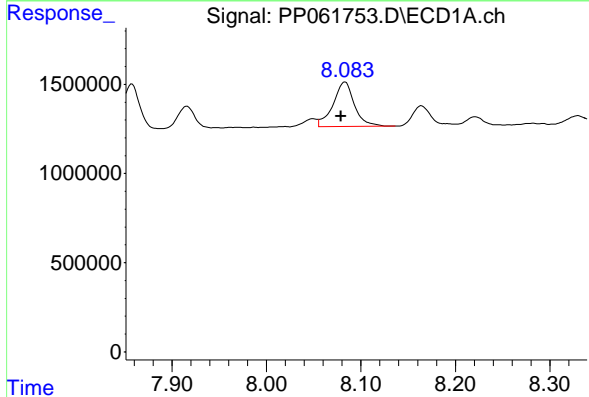
R.T.: 7.857 min  
 Delta R.T.: 0.004 min  
 Response: 3253213  
 Conc: 63.63 ng/ml

Instrument :  
 ECD\_P  
 ClientSampleId :



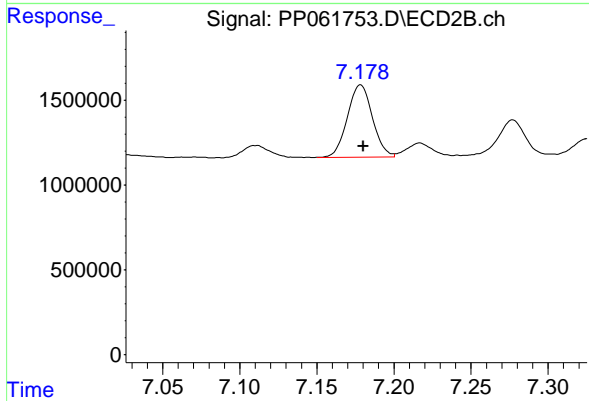
#33 AR-1260-3

R.T.: 6.700 min  
 Delta R.T.: 0.000 min  
 Response: 8651216  
 Conc: 78.93 ng/ml



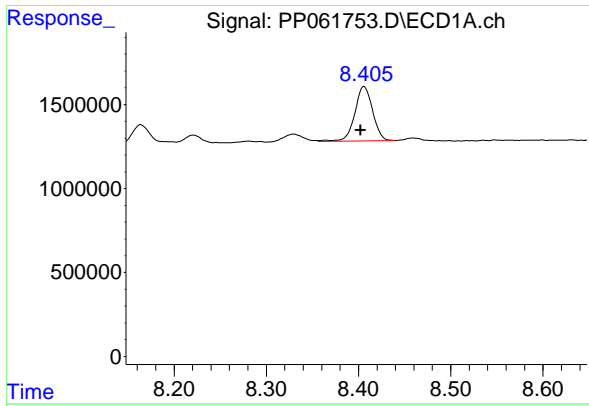
#34 AR-1260-4

R.T.: 8.083 min  
 Delta R.T.: 0.004 min  
 Response: 3958606  
 Conc: 66.49 ng/ml



#34 AR-1260-4

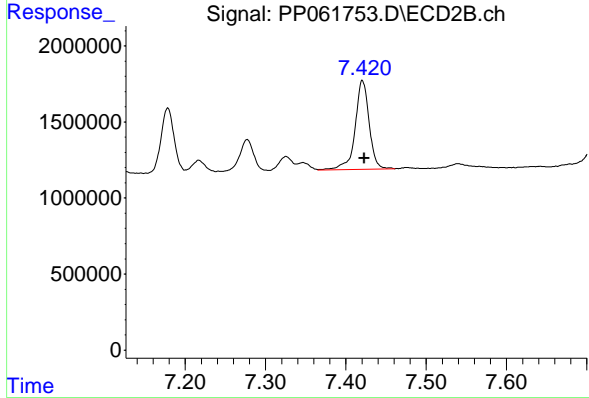
R.T.: 7.178 min  
 Delta R.T.: -0.002 min  
 Response: 4806101  
 Conc: 58.63 ng/ml



#35 AR-1260-5

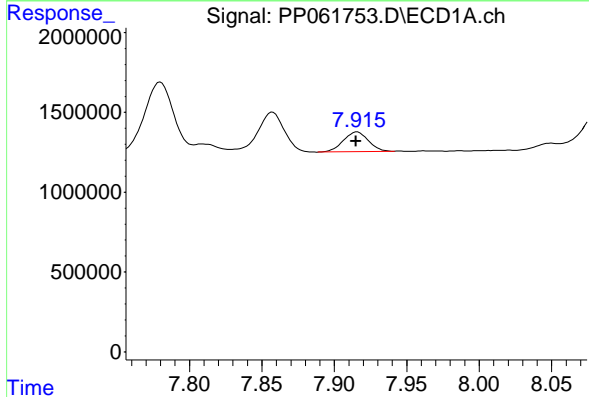
R.T.: 8.406 min  
 Delta R.T.: 0.004 min  
 Response: 4385777  
 Conc: 44.38 ng/ml

Instrument :  
 ECD\_P  
 ClientSampleId :



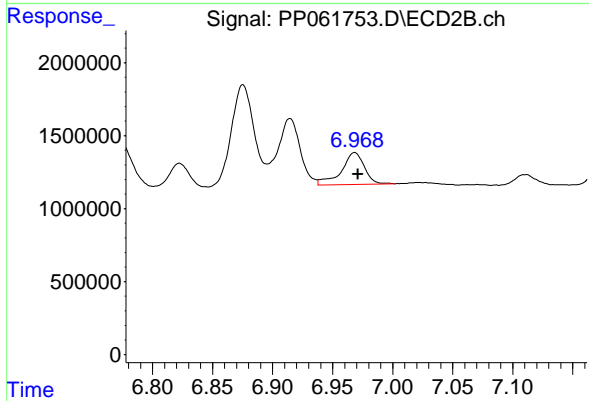
#35 AR-1260-5

R.T.: 7.421 min  
 Delta R.T.: -0.002 min  
 Response: 7103411  
 Conc: 41.16 ng/ml



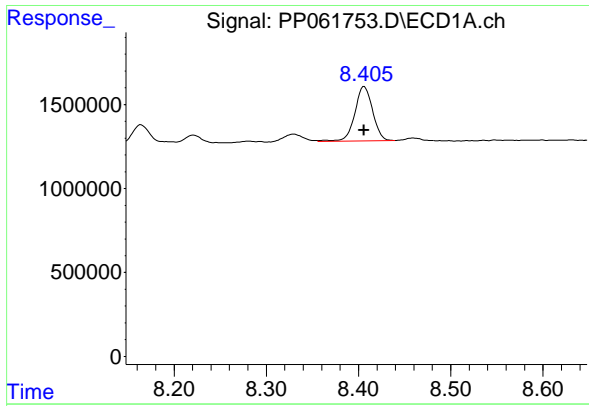
#36 AR-1262-1

R.T.: 7.916 min  
 Delta R.T.: 0.000 min  
 Response: 1496751  
 Conc: 44.88 ng/ml



#36 AR-1262-1

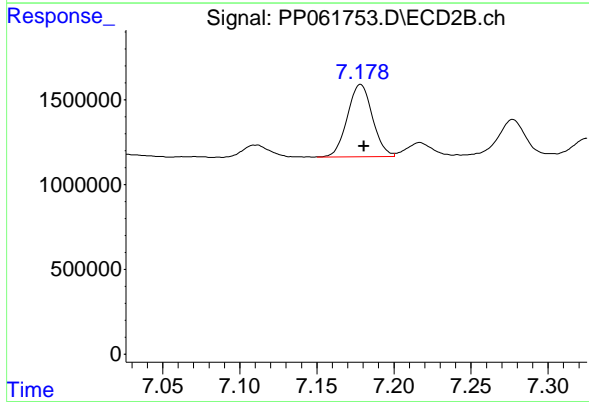
R.T.: 6.968 min  
 Delta R.T.: -0.003 min  
 Response: 2935690  
 Conc: 55.02 ng/ml



#37 AR-1262-2

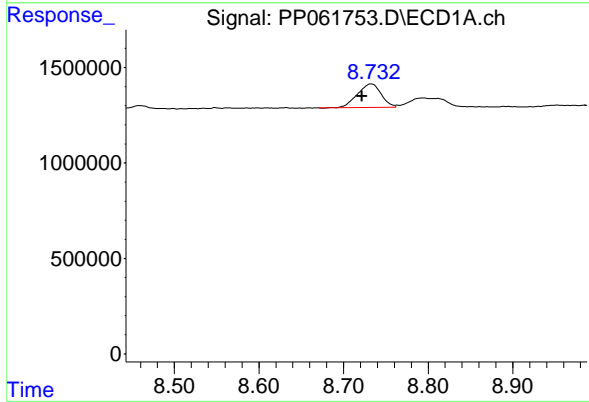
R.T.: 8.406 min  
 Delta R.T.: 0.000 min  
 Response: 4385777  
 Conc: 37.69 ng/ml

Instrument :  
 ECD\_P  
 ClientSampleId :



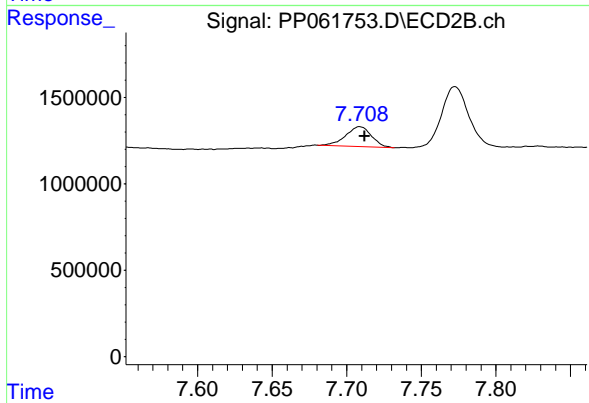
#37 AR-1262-2

R.T.: 7.178 min  
 Delta R.T.: -0.002 min  
 Response: 4806101  
 Conc: 42.30 ng/ml



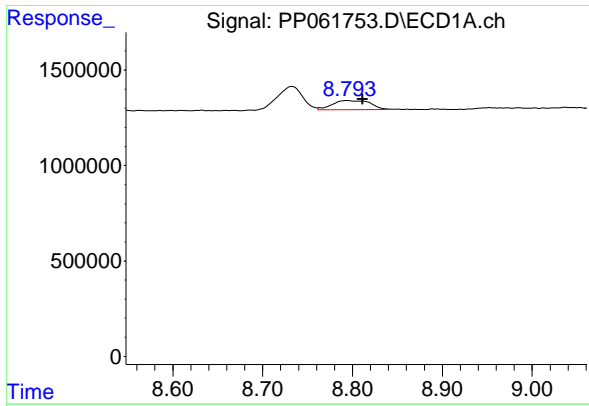
#38 AR-1262-3

R.T.: 8.733 min  
 Delta R.T.: 0.011 min  
 Response: 2400912  
 Conc: 28.68 ng/ml



#38 AR-1262-3

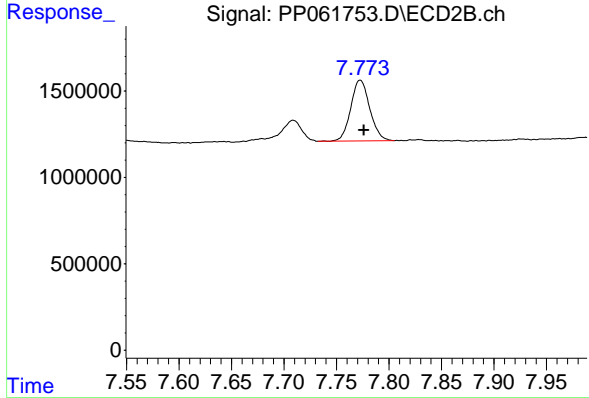
R.T.: 7.709 min  
 Delta R.T.: -0.003 min  
 Response: 1398336  
 Conc: 16.06 ng/ml



#39 AR-1262-4

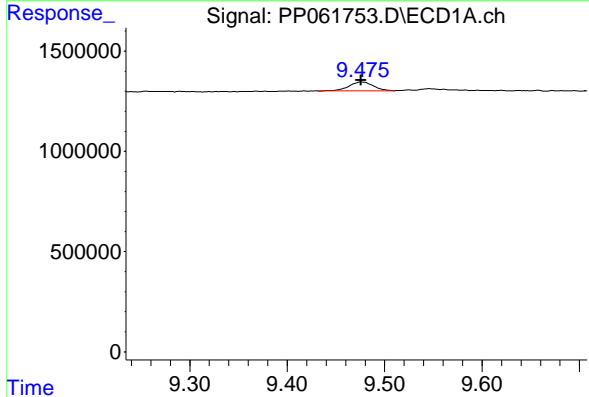
R.T.: 8.794 min  
 Delta R.T.: -0.017 min  
 Response: 1398066  
 Conc: 20.31 ng/ml

Instrument :  
 ECD\_P  
 ClientSampleId :



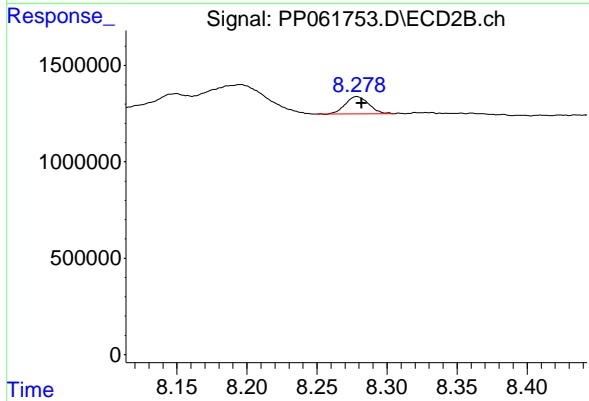
#39 AR-1262-4

R.T.: 7.773 min  
 Delta R.T.: -0.004 min  
 Response: 4438920  
 Conc: 29.66 ng/ml



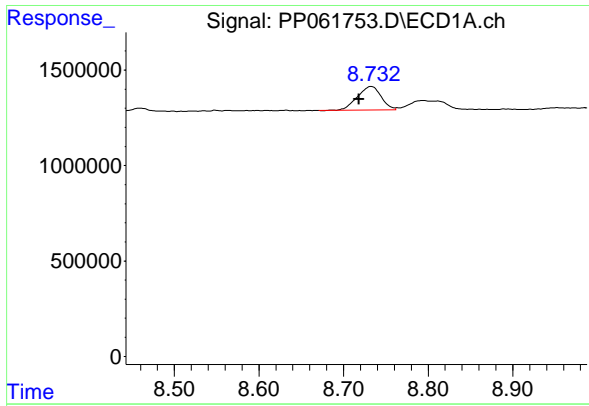
#40 AR-1262-5

R.T.: 9.476 min  
 Delta R.T.: 0.000 min  
 Response: 761063  
 Conc: 19.22 ng/ml



#40 AR-1262-5

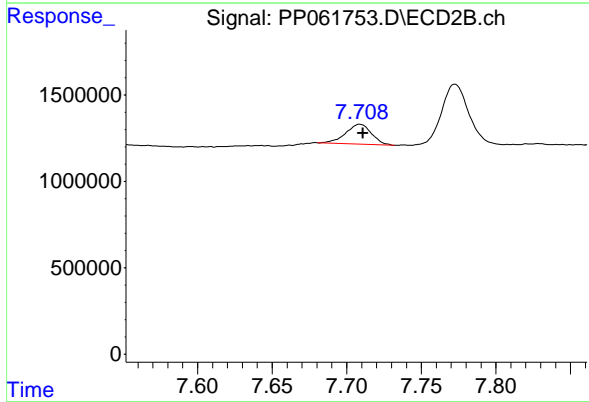
R.T.: 8.278 min  
 Delta R.T.: -0.003 min  
 Response: 1045140  
 Conc: 17.71 ng/ml



#41 AR-1268-1

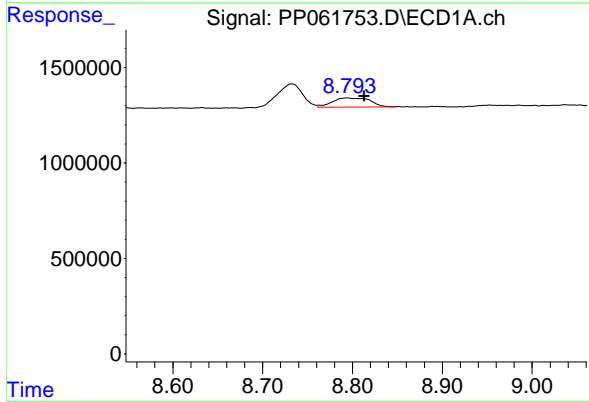
R.T.: 8.733 min  
 Delta R.T.: 0.015 min  
 Response: 2400912  
 Conc: 15.51 ng/ml

Instrument :  
 ECD\_P  
 ClientSampleId :



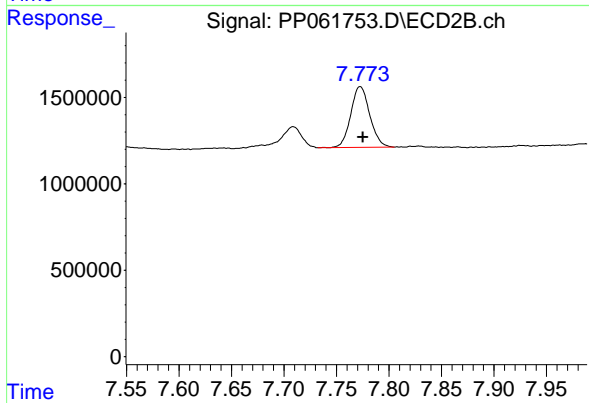
#41 AR-1268-1

R.T.: 7.709 min  
 Delta R.T.: -0.002 min  
 Response: 1398336  
 Conc: 5.73 ng/ml



#42 AR-1268-2

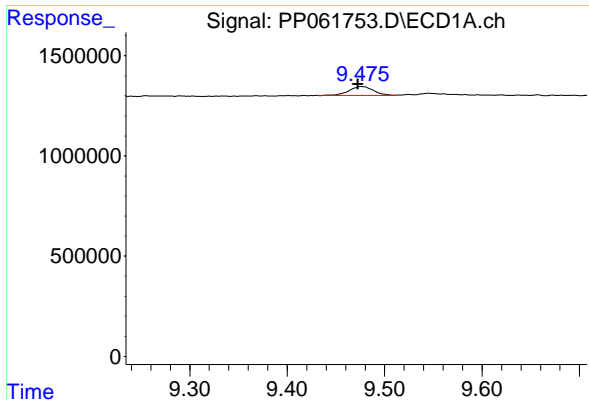
R.T.: 8.794 min  
 Delta R.T.: -0.019 min  
 Response: 1398066  
 Conc: 9.63 ng/ml



#42 AR-1268-2

R.T.: 7.773 min  
 Delta R.T.: -0.002 min  
 Response: 4438920  
 Conc: 20.27 ng/ml

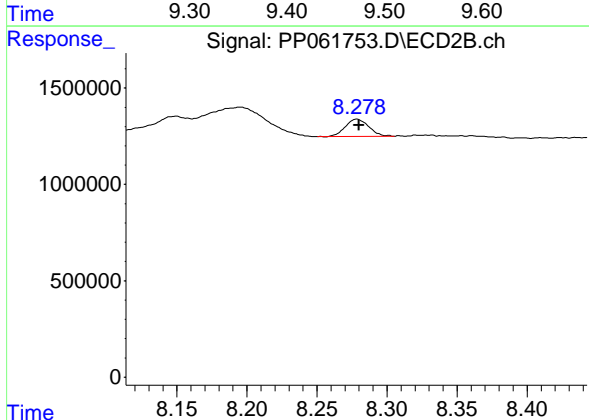




#44 AR-1268-4

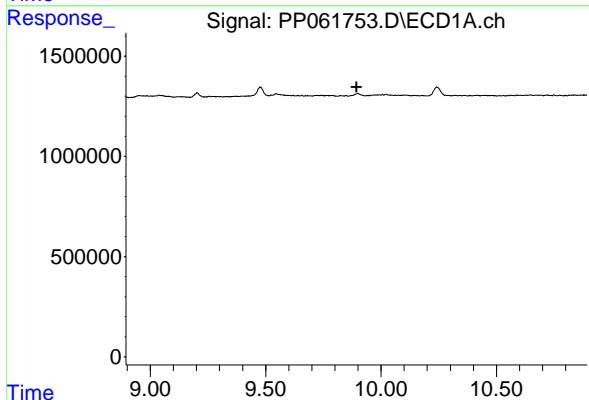
R.T.: 9.476 min  
 Delta R.T.: 0.003 min  
 Response: 761063  
 Conc: 17.14 ng/ml

Instrument :  
 ECD\_P  
 ClientSampleId :



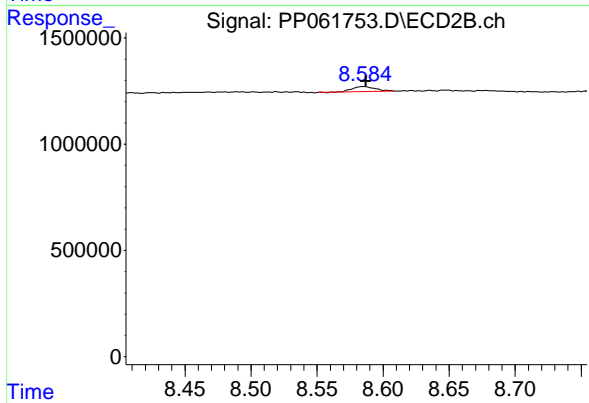
#44 AR-1268-4

R.T.: 8.278 min  
 Delta R.T.: -0.002 min  
 Response: 1045140  
 Conc: 15.22 ng/ml



#45 AR-1268-5

R.T.: 0.000 min  
 Exp R.T. : 9.894 min  
 Response: 0  
 Conc: N.D.



#45 AR-1268-5

R.T.: 8.585 min  
 Delta R.T.: -0.002 min  
 Response: 290292  
 Conc: 0.50 ng/ml