

Data Path : Z:\pestpcbsrv\HPCHEM1\ECD_P\Data\PP112024\
 Data File : PP068632.D
 Signal(s) : Signal #1: ECD1A.ch Signal #2: ECD2B.ch
 Acq On : 20 Nov 2024 16:20
 Operator : YP\AJ
 Sample : AR1660CCC500
 Misc :
 ALS Vial : 3 Sample Multiplier: 1

Instrument :
 ECD_P
 ClientSampleId :

Integration File signal 1: autoint1.e
 Integration File signal 2: autoint2.e
 Quant Time: Nov 21 02:47:55 2024
 Quant Method : Z:\pestpcbsrv\HPCHEM1\ECD_P\methods\PP110724.M
 Quant Title : GC EXTRACTABLES
 QLast Update : Fri Nov 08 11:04:08 2024
 Response via : Initial Calibration
 Integrator: ChemStation

Volume Inj. : 2 µl
 Signal #1 Phase : ZB-MR1 Signal #2 Phase: ZB-MR2
 Signal #1 Info : 30Mx0.32mmx 0.50µ Signal #2 Info : 30M x 0.32mm x 0.25µm

Compound	RT#1	RT#2	Resp#1	Resp#2	ng/ml	ng/ml
System Monitoring Compounds						
1) SA Tetrachlo...	4.759	4.051	47266121	47694205	48.697	49.256
2) SA Decachlor...	10.677	9.208	56786126	52382597	45.375	46.308
Target Compounds						
3) L1 AR-1016-1	5.924	5.157	17218130	16016795	479.132	484.665
4) L1 AR-1016-2	5.946	5.177	25619912	22166401	483.848	474.223
5) L1 AR-1016-3	6.009	5.358	16511444	12576625	498.707	465.108
6) L1 AR-1016-4	6.108	5.397	13383033	11182813	509.208	473.949
7) L1 AR-1016-5	6.402	5.616	13423781	13994135	475.886	472.102
8) L2 AR-1221-1	4.955	4.264	1804653	1807180	133.065	143.309
9) L2 AR-1221-2	5.048	4.354	2657471	2692966	263.493	275.553
10) L2 AR-1221-3	5.124	4.431	9587007	9747574	316.822	319.688
11) L3 AR-1232-1	5.124	4.431	9587007	9747574	411.114	413.004
12) L3 AR-1232-2	5.657	5.177	13261049	22166401	886.746	1017.500
13) L3 AR-1232-3	5.946	5.358	25619912	12576625	1022.584	1121.847
14) L3 AR-1232-4	6.108	5.441	13383033	13114575	1081.180	1196.966
15) L3 AR-1232-5	6.197	5.616	12373691	13994135	1244.237	1135.884
16) L4 AR-1242-1	5.924	5.157	17218130	16016795	576.368	576.356
17) L4 AR-1242-2	5.946	5.177	25619912	22166401	580.923	573.886
18) L4 AR-1242-3	6.009	5.358	16511444	12576625	592.691	591.005
19) L4 AR-1242-4	6.108	5.441	13383033	13114575	611.657	575.360
20) L4 AR-1242-5	6.843	5.971	3762118	13754491	154.945	501.050 #
21) L5 AR-1248-1	5.924	5.157	17218130	16016795	763.065	733.120
22) L5 AR-1248-2	6.197	5.397	12373691	11182813	368.148	349.801
23) L5 AR-1248-3	6.402	5.441	13423781	13114575	367.617	391.384
24) L5 AR-1248-4	6.778	5.616	15935442	13994135	372.448	360.406
25) L5 AR-1248-5	6.843	6.013	3762118	3296038	90.568	88.918
26) L6 AR-1254-1	6.778	5.971	15935442	13754491	307.122	226.815 #
27) L6 AR-1254-2	6.995	6.119	11356712	10155683	166.429	192.578
28) L6 AR-1254-3	7.361	6.543	6170462	23278407	86.351	279.583 #
29) L6 AR-1254-4	7.645	6.756	5047251	2251647	93.790	46.304 #
30) L6 AR-1254-5	8.061	7.176	37454719	32209920	597.681	431.574 #
31) L7 AR-1260-1	7.526	6.659	24724363	25488614	456.977	458.025
32) L7 AR-1260-2	7.779	6.845	28880141	29902623	454.013	451.457
33) L7 AR-1260-3	8.141	7.003	23959279	28459467	445.406	459.829
34) L7 AR-1260-4	8.379	7.477	27110339	24959504	435.661	473.283
35) L7 AR-1260-5	8.717	7.716	49174844	54841287	434.466	460.557
36) L8 AR-1262-1	8.379	7.215	27110339	26413325	365.699	340.393
37) L8 AR-1262-2	8.717	7.477	49174844	24959504	381.204	353.061
38) L8 AR-1262-3	9.063	8.002	34009565	14355076	355.447	243.937 #
39) L8 AR-1262-4	9.146	8.066	23575116	41952511	308.628	404.941 #
40) L8 AR-1262-5	9.851	8.593	17746871	17151078	331.824	338.343
41) L9 AR-1268-1	9.063	8.002	34009565	14355076	220.421	92.179 #

Data Path : Z:\pestpcbsrv\HPCHEM1\ECD_P\Data\PP112024\
 Data File : PP068632.D
 Signal(s) : Signal #1: ECD1A.ch Signal #2: ECD2B.ch
 Acq On : 20 Nov 2024 16:20
 Operator : YP\AJ
 Sample : AR1660CCC500
 Misc :
 ALS Vial : 3 Sample Multiplier: 1

Instrument :
 ECD_P
 ClientSampleId :

Integration File signal 1: autoint1.e
 Integration File signal 2: autoint2.e
 Quant Time: Nov 21 02:47:55 2024
 Quant Method : Z:\pestpcbsrv\HPCHEM1\ECD_P\methods\PP110724.M
 Quant Title : GC EXTRACTABLES
 QLast Update : Fri Nov 08 11:04:08 2024
 Response via : Initial Calibration
 Integrator: ChemStation

Volume Inj. : 2 µl
 Signal #1 Phase : ZB-MR1 Signal #2 Phase: ZB-MR2
 Signal #1 Info : 30Mx0.32mmx 0.50µ Signal #2 Info : 30M x 0.32mm x 0.25µm

	Compound	RT#1	RT#2	Resp#1	Resp#2	ng/ml	ng/ml
42)	L9 AR-1268-2	9.146	8.066	23575116	41952511	168.409	296.361 #
43)	L9 AR-1268-3	9.401	8.286	711024	900428	5.659	7.231 #
44)	L9 AR-1268-4	9.851	8.593	17746871	17151078	332.111	314.097
45)	L9 AR-1268-5	10.303	8.919	5392969	5175361	13.585	13.743

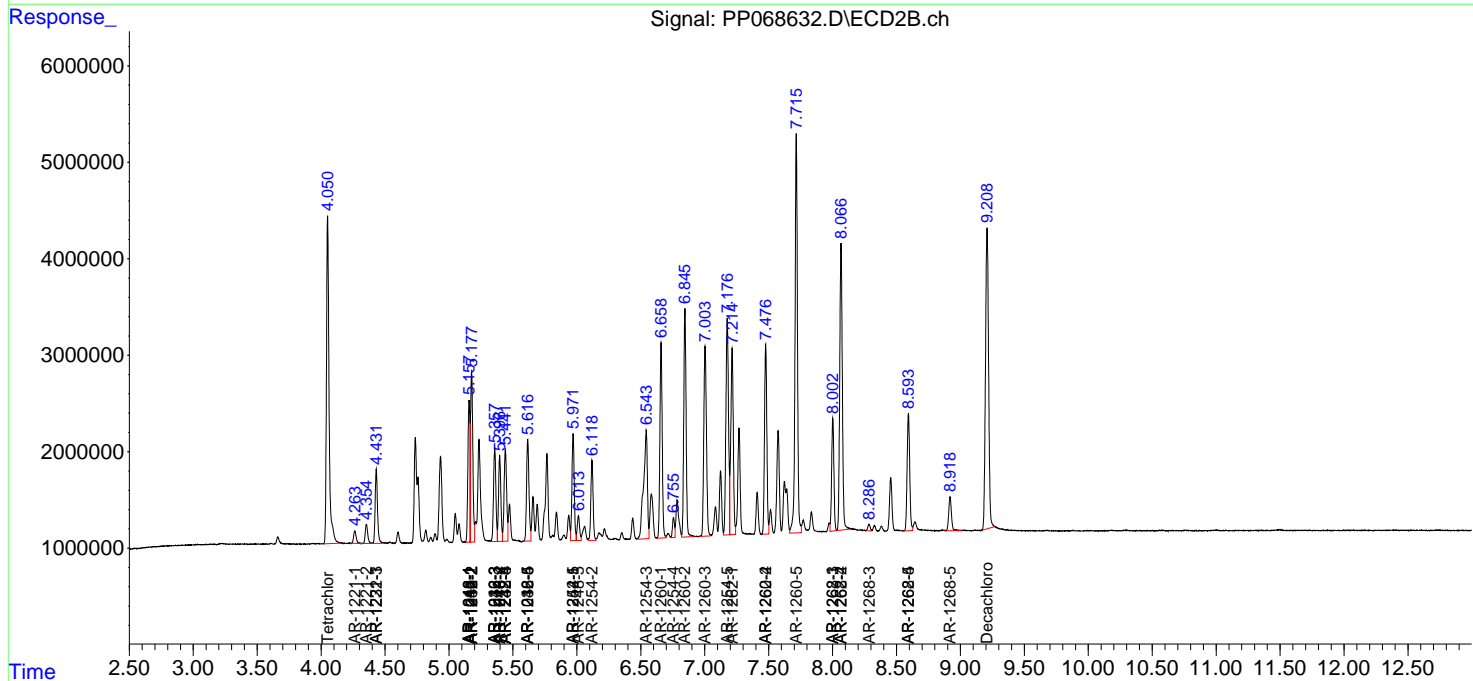
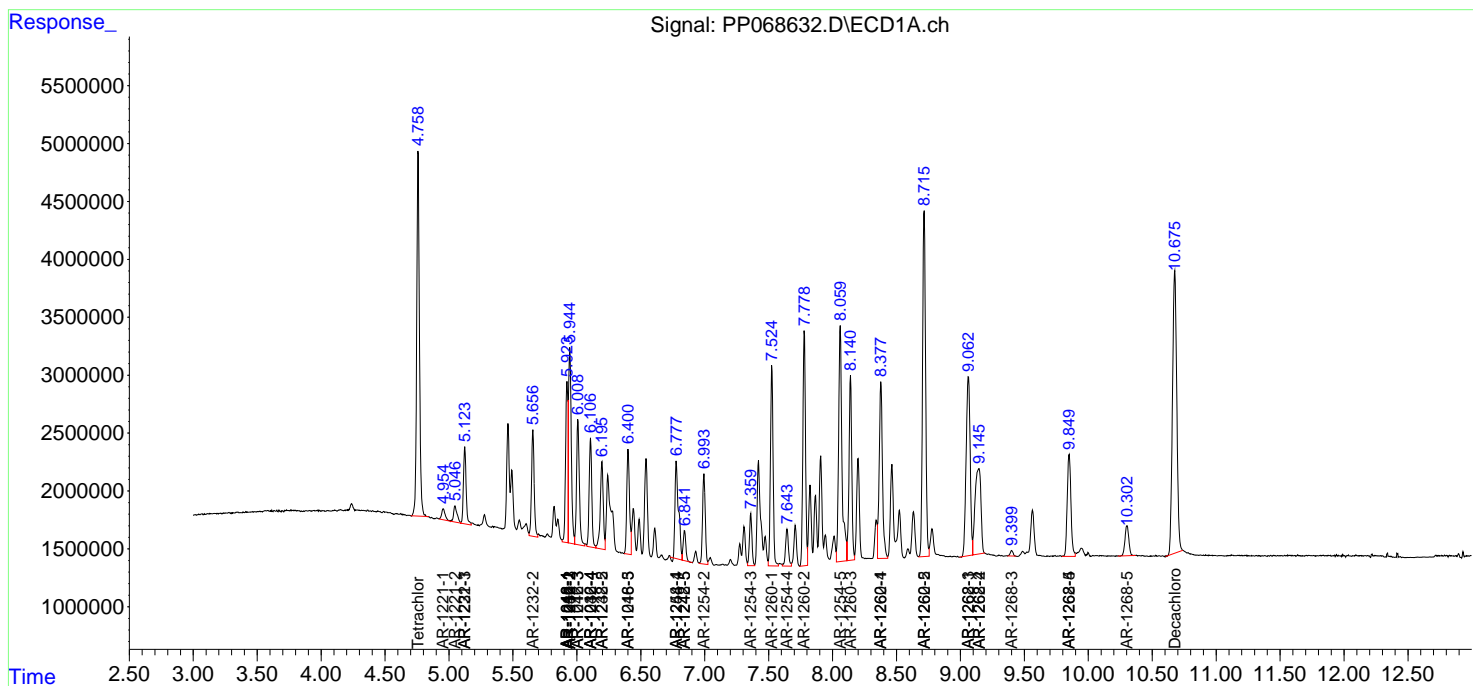
(f)=RT Delta > 1/2 Window (#)=Amounts differ by > 25% (m)=manual int.

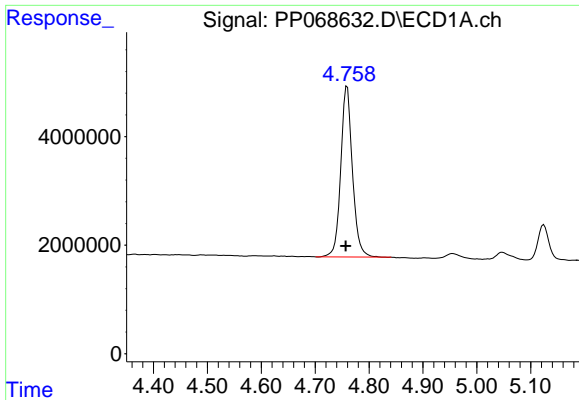
Data Path : Z:\pestpcbsrv\HPCHEM1\ECD_P\Data\PP112024\
 Data File : PP068632.D
 Signal(s) : Signal #1: ECD1A.ch Signal #2: ECD2B.ch
 Acq On : 20 Nov 2024 16:20
 Operator : YP\AJ
 Sample : AR1660CCC500
 Misc :
 ALS Vial : 3 Sample Multiplier: 1

Instrument :
 ECD_P
 ClientSampleId :

Integration File signal 1: autoint1.e
 Integration File signal 2: autoint2.e
 Quant Time: Nov 21 02:47:55 2024
 Quant Method : Z:\pestpcbsrv\HPCHEM1\ECD_P\methods\PP110724.M
 Quant Title : GC EXTRACTABLES
 QLast Update : Fri Nov 08 11:04:08 2024
 Response via : Initial Calibration
 Integrator: ChemStation

Volume Inj. : 2 µl
 Signal #1 Phase : ZB-MR1 Signal #2 Phase: ZB-MR2
 Signal #1 Info : 30Mx0.32mmx 0.50µ Signal #2 Info : 30M x 0.32mm x 0.25µm

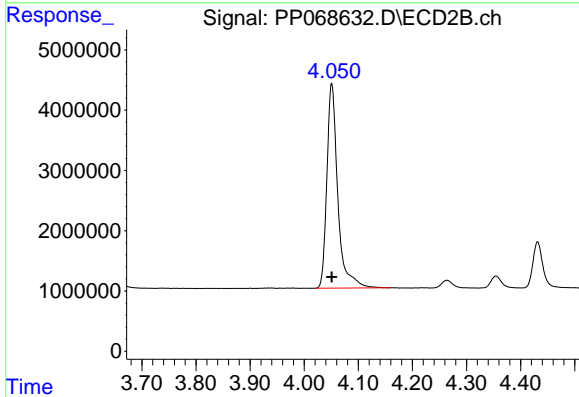




#1 Tetrachloro-m-xylene

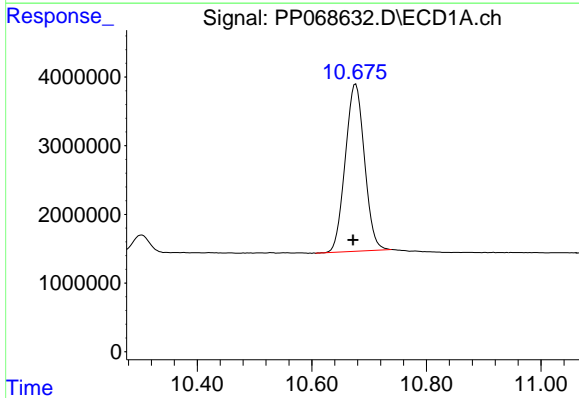
R.T.: 4.759 min
Delta R.T.: 0.002 min
Response: 47266121
Conc: 48.70 ng/ml

Instrument :
ECD_P
ClientSampleId :



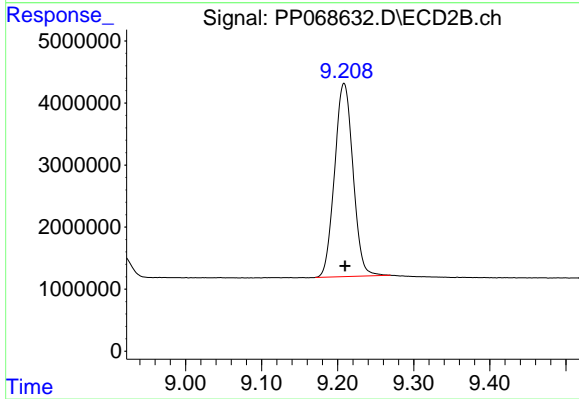
#1 Tetrachloro-m-xylene

R.T.: 4.051 min
Delta R.T.: 0.000 min
Response: 47694205
Conc: 49.26 ng/ml



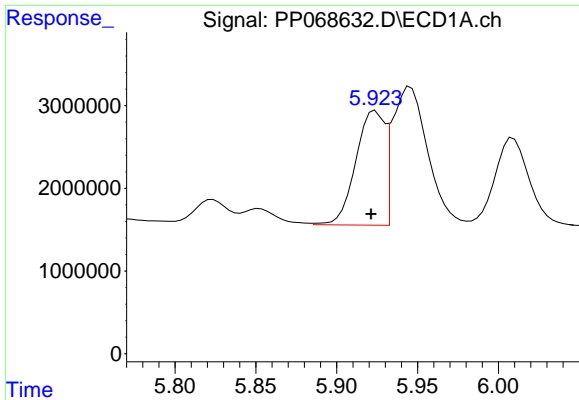
#2 Decachlorobiphenyl

R.T.: 10.677 min
Delta R.T.: 0.005 min
Response: 56786126
Conc: 45.38 ng/ml



#2 Decachlorobiphenyl

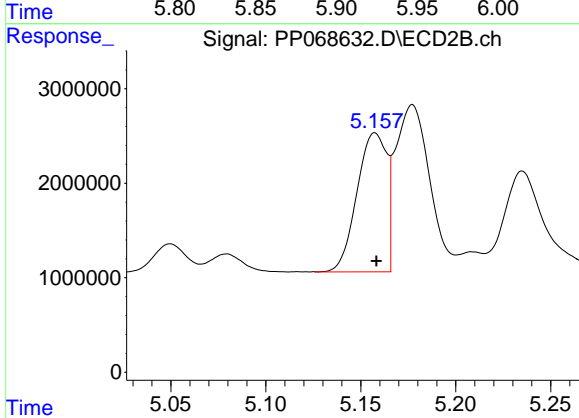
R.T.: 9.208 min
Delta R.T.: -0.001 min
Response: 52382597
Conc: 46.31 ng/ml



#3 AR-1016-1

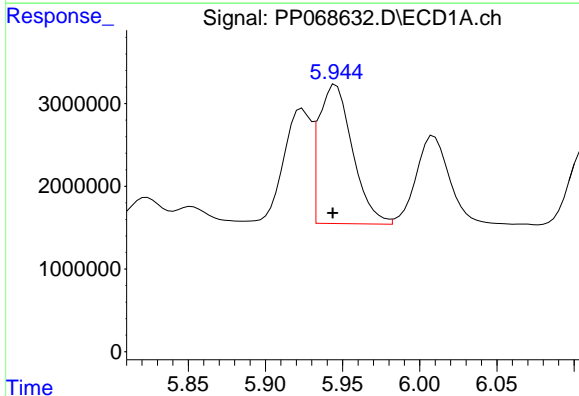
R.T.: 5.924 min
 Delta R.T.: 0.003 min
 Response: 17218130
 Conc: 479.13 ng/ml

Instrument :
 ECD_P
 ClientSampleId :



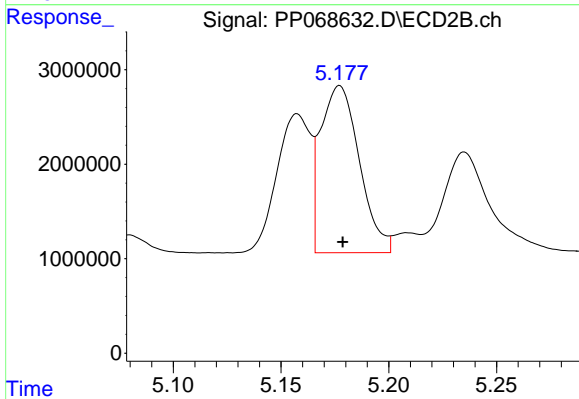
#3 AR-1016-1

R.T.: 5.157 min
 Delta R.T.: 0.000 min
 Response: 16016795
 Conc: 484.67 ng/ml



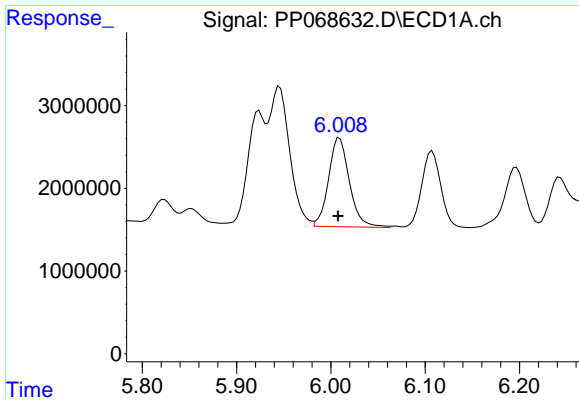
#4 AR-1016-2

R.T.: 5.946 min
 Delta R.T.: 0.002 min
 Response: 25619912
 Conc: 483.85 ng/ml



#4 AR-1016-2

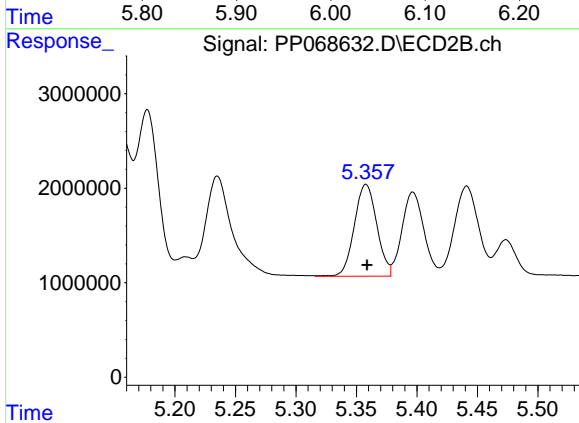
R.T.: 5.177 min
 Delta R.T.: -0.001 min
 Response: 22166401
 Conc: 474.22 ng/ml



#5 AR-1016-3

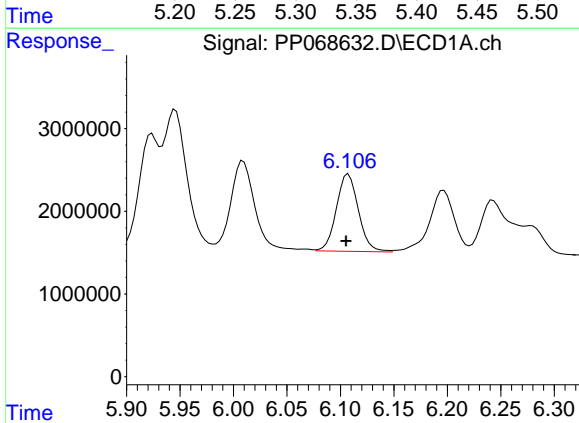
R.T.: 6.009 min
 Delta R.T.: 0.001 min
 Response: 16511444
 Conc: 498.71 ng/ml

Instrument :
 ECD_P
 ClientSampleId :



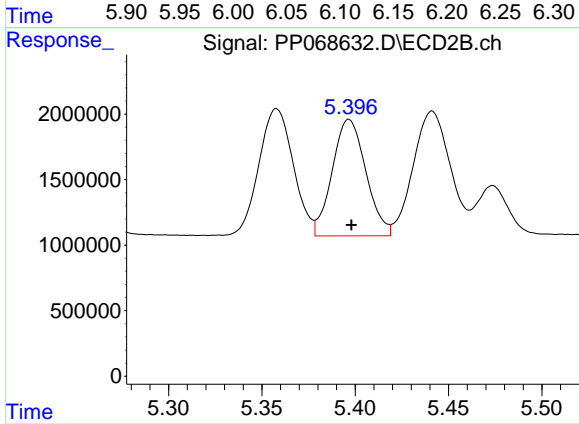
#5 AR-1016-3

R.T.: 5.358 min
 Delta R.T.: 0.000 min
 Response: 12576625
 Conc: 465.11 ng/ml



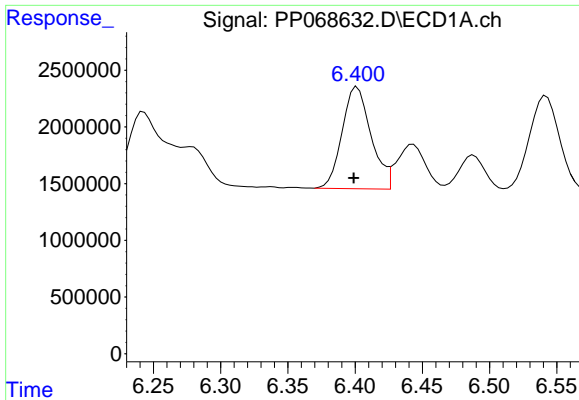
#6 AR-1016-4

R.T.: 6.108 min
 Delta R.T.: 0.002 min
 Response: 13383033
 Conc: 509.21 ng/ml



#6 AR-1016-4

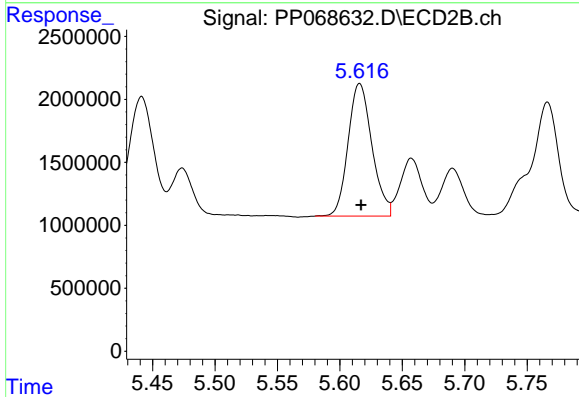
R.T.: 5.397 min
 Delta R.T.: -0.001 min
 Response: 11182813
 Conc: 473.95 ng/ml



#7 AR-1016-5

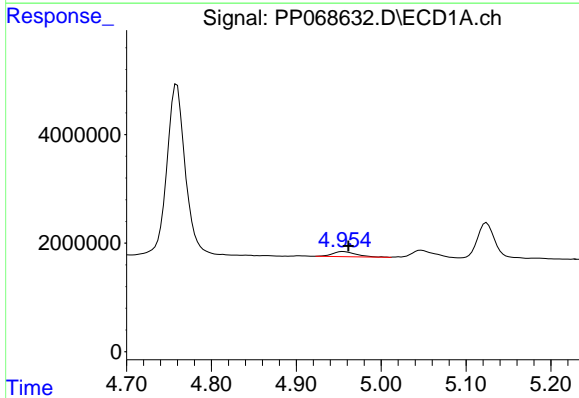
R.T.: 6.402 min
 Delta R.T.: 0.003 min
 Response: 13423781
 Conc: 475.89 ng/ml

Instrument :
 ECD_P
 ClientSampleId :



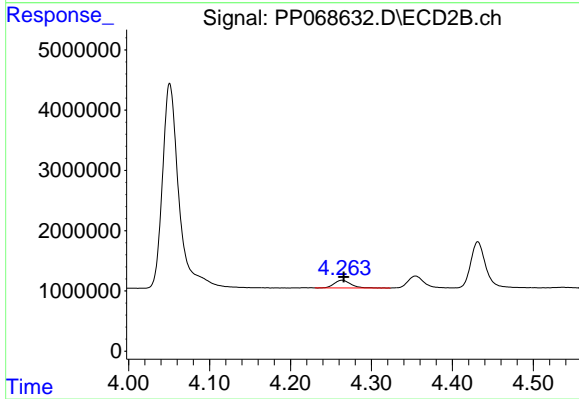
#7 AR-1016-5

R.T.: 5.616 min
 Delta R.T.: -0.001 min
 Response: 13994135
 Conc: 472.10 ng/ml



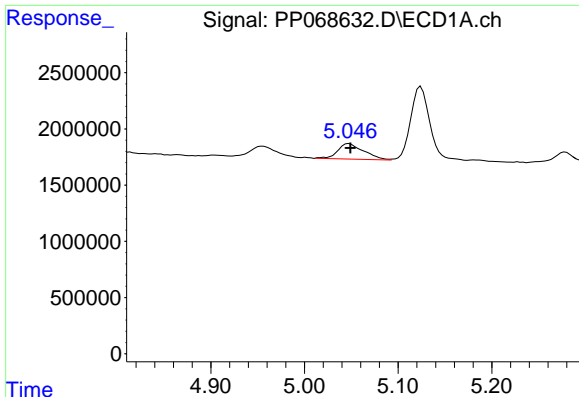
#8 AR-1221-1

R.T.: 4.955 min
 Delta R.T.: -0.006 min
 Response: 1804653
 Conc: 133.07 ng/ml



#8 AR-1221-1

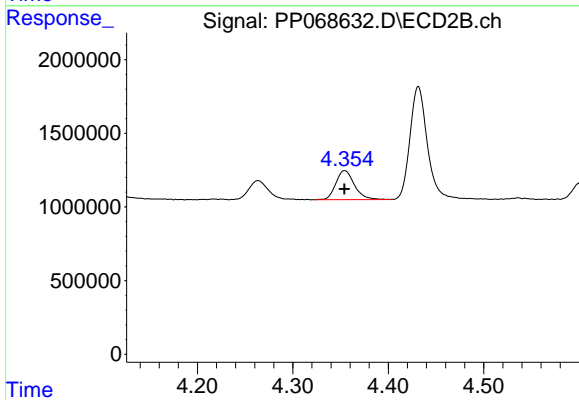
R.T.: 4.264 min
 Delta R.T.: -0.002 min
 Response: 1807180
 Conc: 143.31 ng/ml



#9 AR-1221-2

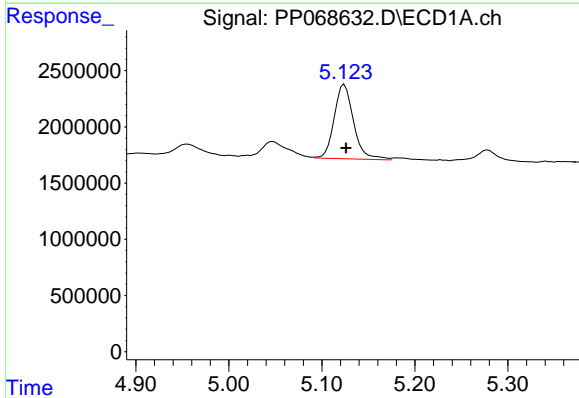
R.T.: 5.048 min
 Delta R.T.: -0.002 min
 Response: 2657471
 Conc: 263.49 ng/ml

Instrument :
 ECD_P
 ClientSampleId :



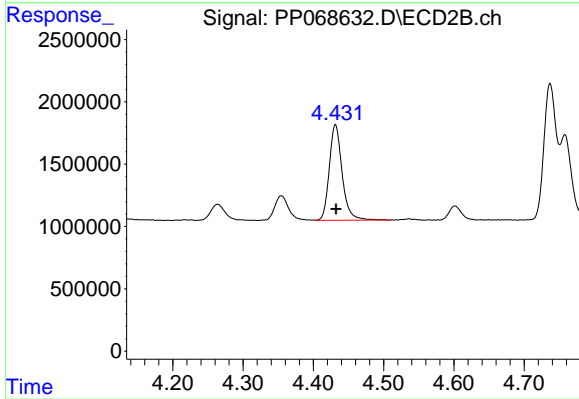
#9 AR-1221-2

R.T.: 4.354 min
 Delta R.T.: 0.000 min
 Response: 2692966
 Conc: 275.55 ng/ml



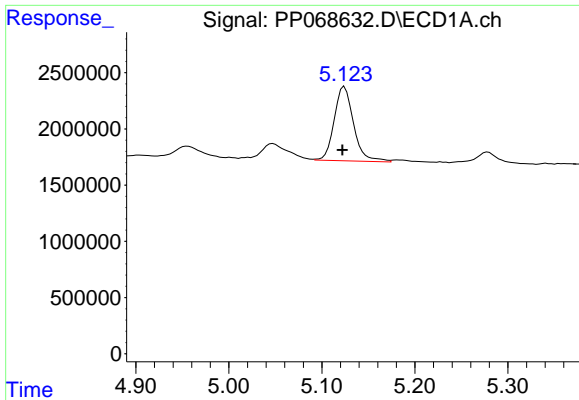
#10 AR-1221-3

R.T.: 5.124 min
 Delta R.T.: -0.002 min
 Response: 9587007
 Conc: 316.82 ng/ml



#10 AR-1221-3

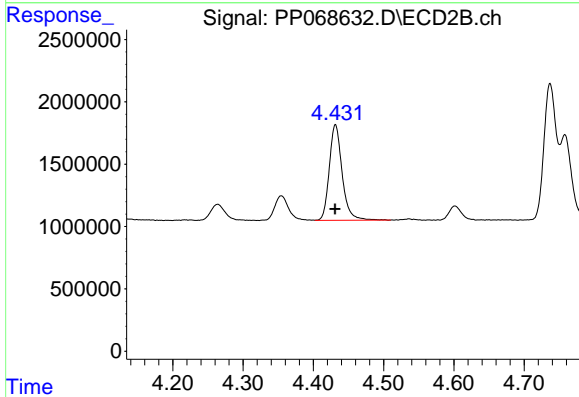
R.T.: 4.431 min
 Delta R.T.: 0.000 min
 Response: 9747574
 Conc: 319.69 ng/ml



#11 AR-1232-1

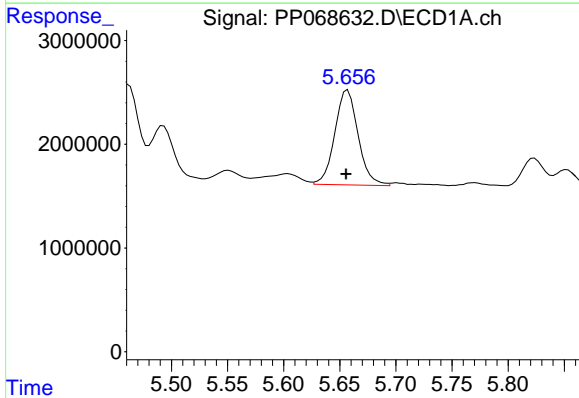
R.T.: 5.124 min
 Delta R.T.: 0.002 min
 Response: 9587007
 Conc: 411.11 ng/ml

Instrument :
 ECD_P
 ClientSampleId :



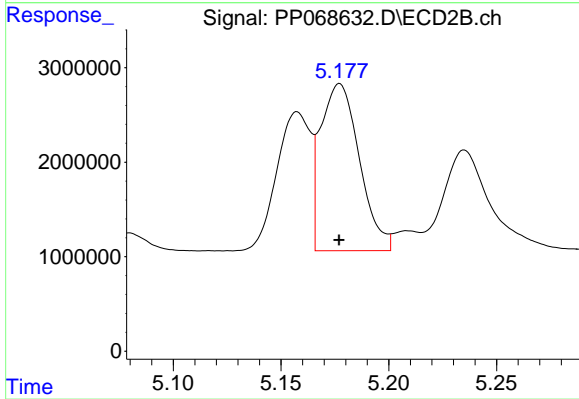
#11 AR-1232-1

R.T.: 4.431 min
 Delta R.T.: 0.000 min
 Response: 9747574
 Conc: 413.00 ng/ml



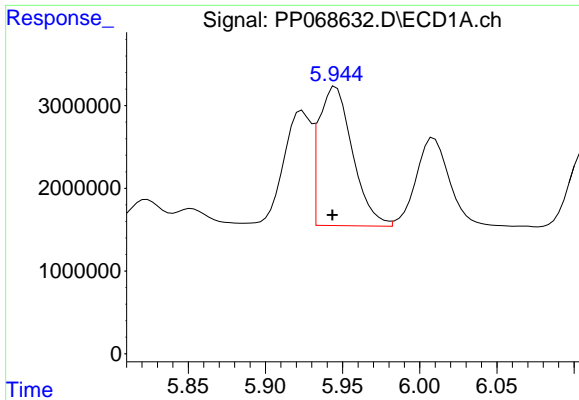
#12 AR-1232-2

R.T.: 5.657 min
 Delta R.T.: 0.001 min
 Response: 13261049
 Conc: 886.75 ng/ml



#12 AR-1232-2

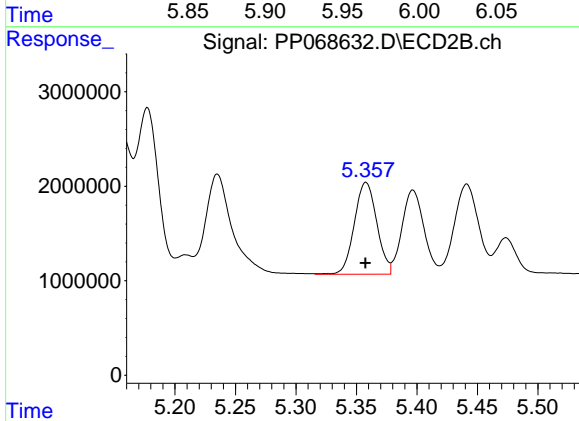
R.T.: 5.177 min
 Delta R.T.: 0.000 min
 Response: 22166401
 Conc: 1017.50 ng/ml



#13 AR-1232-3

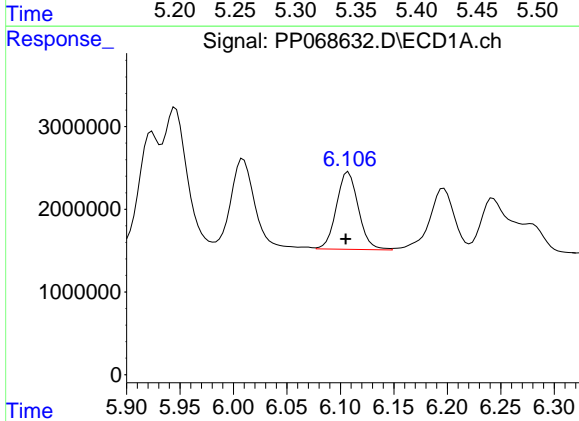
R.T.: 5.946 min
 Delta R.T.: 0.002 min
 Response: 25619912
 Conc: 1022.58 ng/ml

Instrument :
 ECD_P
 ClientSampleId :



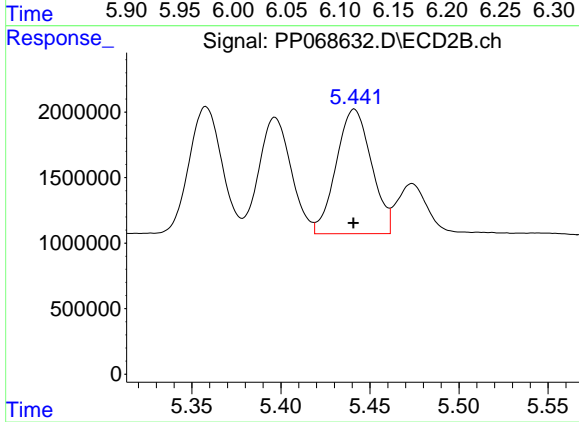
#13 AR-1232-3

R.T.: 5.358 min
 Delta R.T.: 0.000 min
 Response: 12576625
 Conc: 1121.85 ng/ml



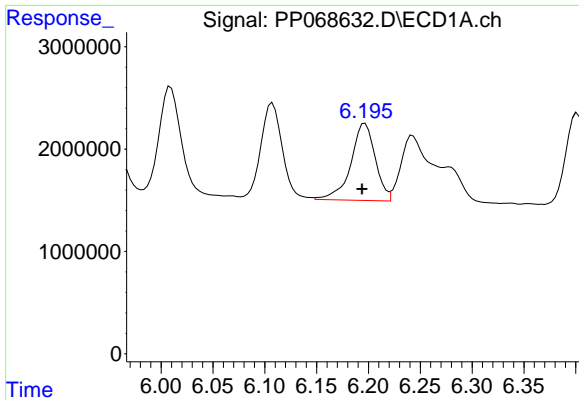
#14 AR-1232-4

R.T.: 6.108 min
 Delta R.T.: 0.002 min
 Response: 13383033
 Conc: 1081.18 ng/ml



#14 AR-1232-4

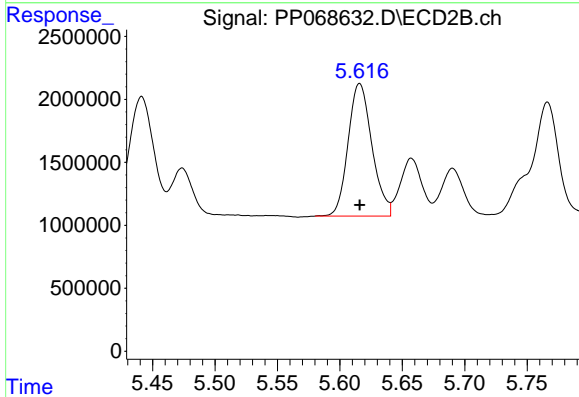
R.T.: 5.441 min
 Delta R.T.: 0.000 min
 Response: 13114575
 Conc: 1196.97 ng/ml



#15 AR-1232-5

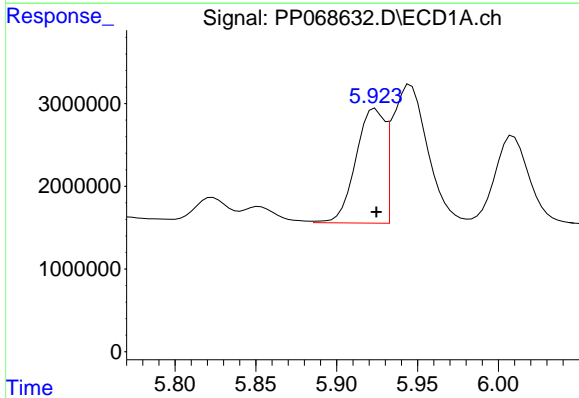
R.T.: 6.197 min
 Delta R.T.: 0.003 min
 Response: 12373691
 Conc: 1244.24 ng/ml

Instrument :
 ECD_P
 ClientSampleId :



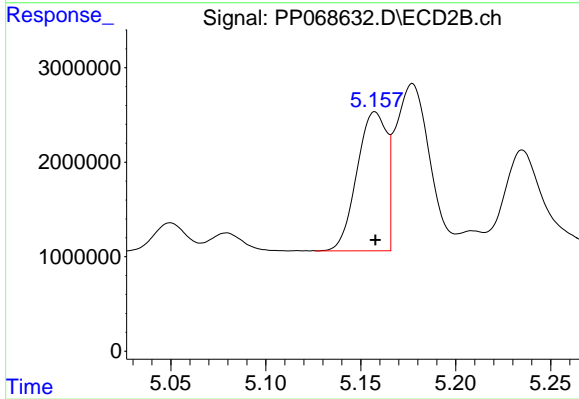
#15 AR-1232-5

R.T.: 5.616 min
 Delta R.T.: 0.000 min
 Response: 13994135
 Conc: 1135.88 ng/ml



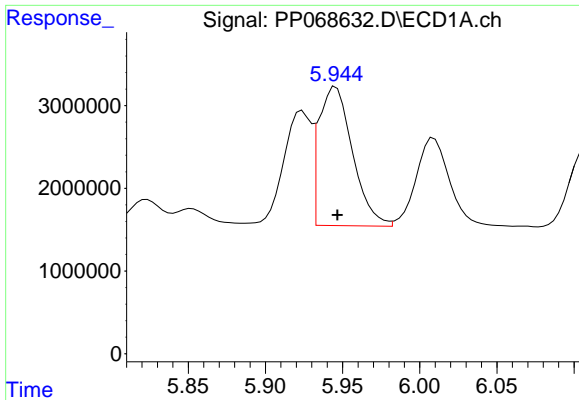
#16 AR-1242-1

R.T.: 5.924 min
 Delta R.T.: 0.000 min
 Response: 17218130
 Conc: 576.37 ng/ml



#16 AR-1242-1

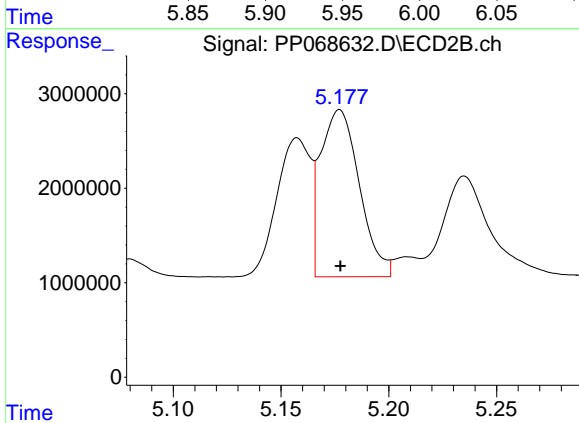
R.T.: 5.157 min
 Delta R.T.: 0.000 min
 Response: 16016795
 Conc: 576.36 ng/ml



#17 AR-1242-2

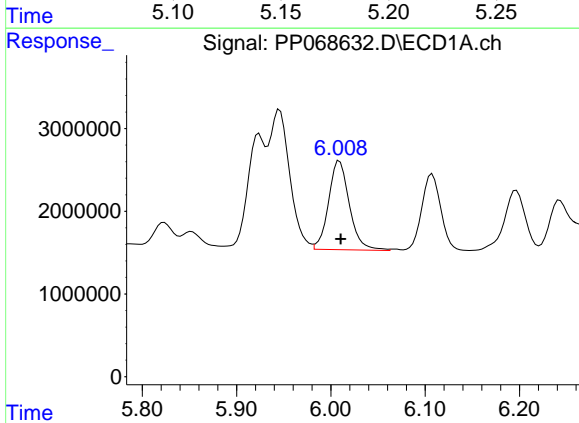
R.T.: 5.946 min
 Delta R.T.: 0.000 min
 Response: 25619912
 Conc: 580.92 ng/ml

Instrument :
 ECD_P
 ClientSampleId :



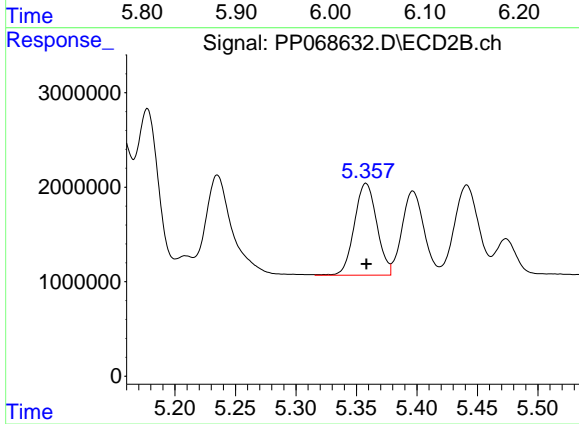
#17 AR-1242-2

R.T.: 5.177 min
 Delta R.T.: 0.000 min
 Response: 22166401
 Conc: 573.89 ng/ml



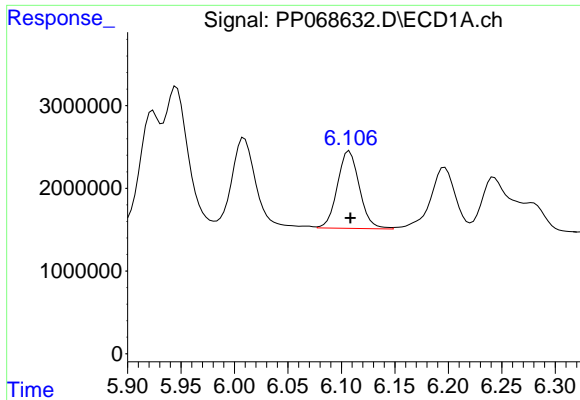
#18 AR-1242-3

R.T.: 6.009 min
 Delta R.T.: -0.001 min
 Response: 16511444
 Conc: 592.69 ng/ml



#18 AR-1242-3

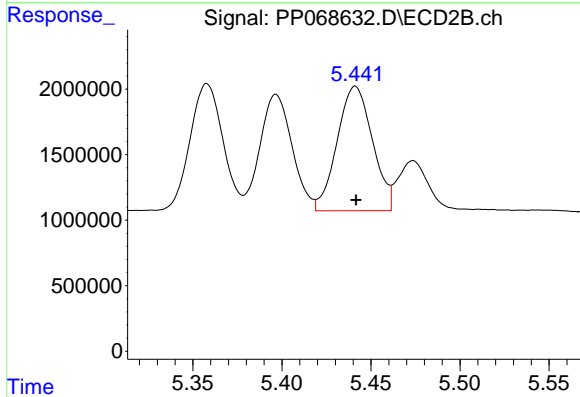
R.T.: 5.358 min
 Delta R.T.: 0.000 min
 Response: 12576625
 Conc: 591.01 ng/ml



#19 AR-1242-4

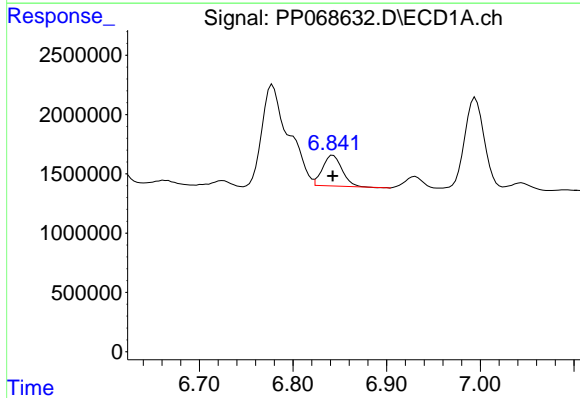
R.T.: 6.108 min
 Delta R.T.: -0.001 min
 Response: 13383033
 Conc: 611.66 ng/ml

Instrument :
 ECD_P
 ClientSampleId :



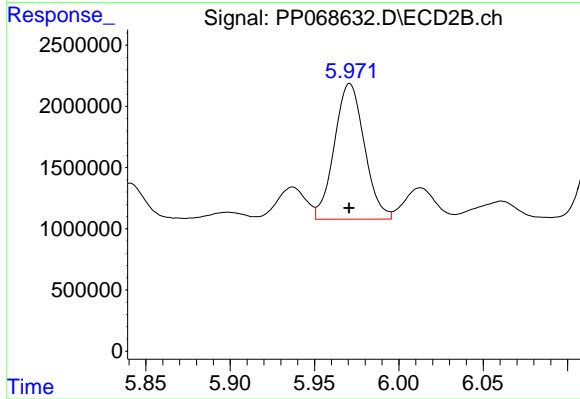
#19 AR-1242-4

R.T.: 5.441 min
 Delta R.T.: 0.000 min
 Response: 13114575
 Conc: 575.36 ng/ml



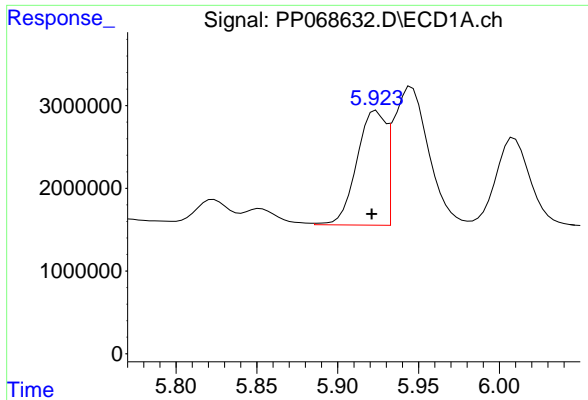
#20 AR-1242-5

R.T.: 6.843 min
 Delta R.T.: 0.000 min
 Response: 3762118
 Conc: 154.94 ng/ml



#20 AR-1242-5

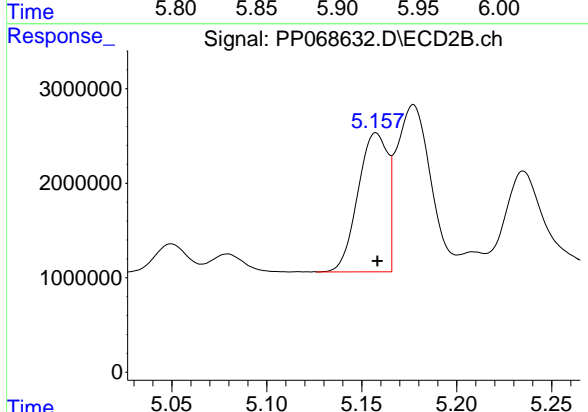
R.T.: 5.971 min
 Delta R.T.: 0.000 min
 Response: 13754491
 Conc: 501.05 ng/ml



#21 AR-1248-1

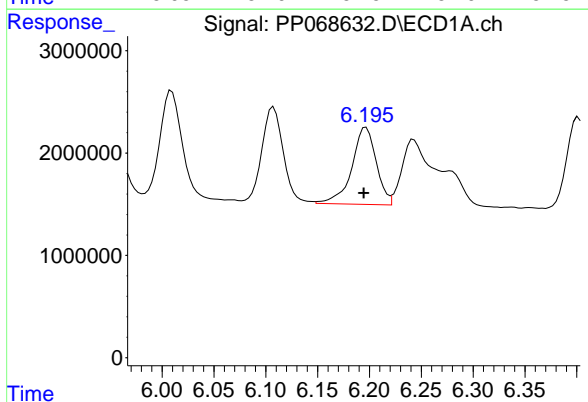
R.T.: 5.924 min
 Delta R.T.: 0.003 min
 Response: 17218130
 Conc: 763.06 ng/ml

Instrument :
 ECD_P
 ClientSampleId :



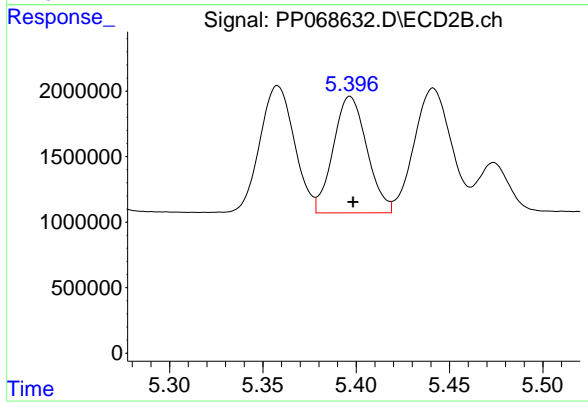
#21 AR-1248-1

R.T.: 5.157 min
 Delta R.T.: 0.000 min
 Response: 16016795
 Conc: 733.12 ng/ml



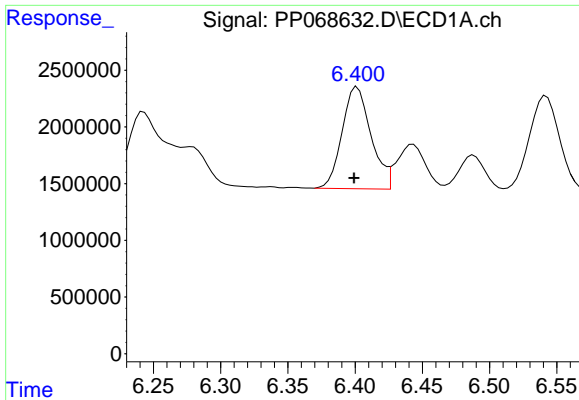
#22 AR-1248-2

R.T.: 6.197 min
 Delta R.T.: 0.002 min
 Response: 12373691
 Conc: 368.15 ng/ml



#22 AR-1248-2

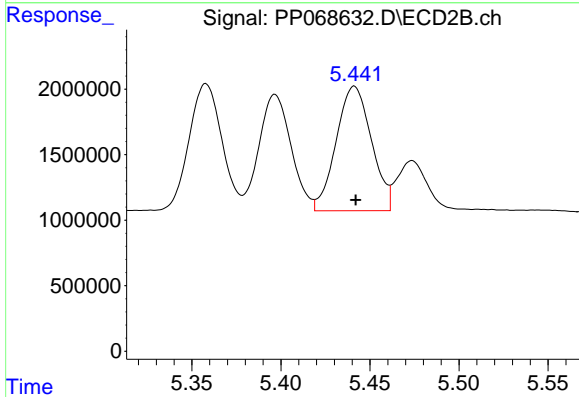
R.T.: 5.397 min
 Delta R.T.: -0.002 min
 Response: 11182813
 Conc: 349.80 ng/ml



#23 AR-1248-3

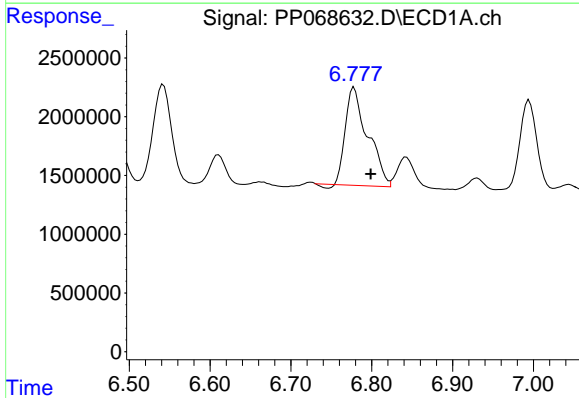
R.T.: 6.402 min
 Delta R.T.: 0.002 min
 Response: 13423781
 Conc: 367.62 ng/ml

Instrument :
 ECD_P
 ClientSampleId :



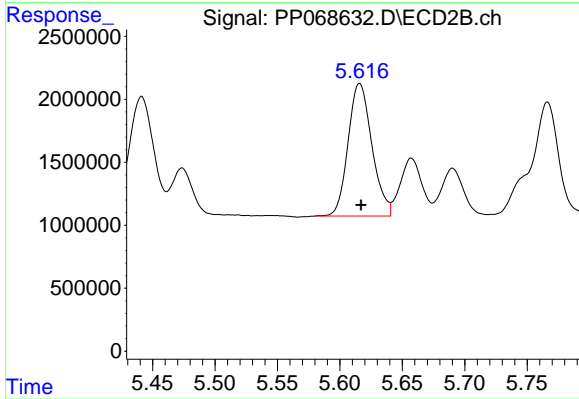
#23 AR-1248-3

R.T.: 5.441 min
 Delta R.T.: 0.000 min
 Response: 13114575
 Conc: 391.38 ng/ml



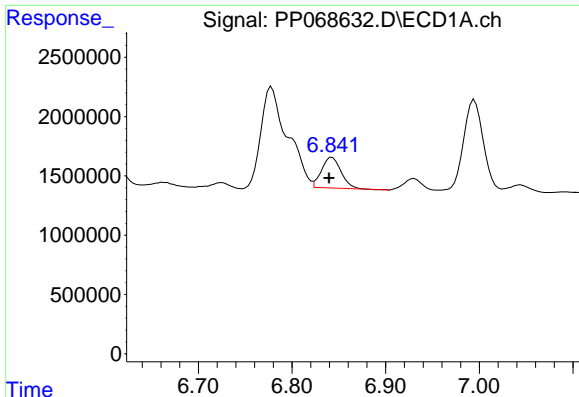
#24 AR-1248-4

R.T.: 6.778 min
 Delta R.T.: -0.021 min
 Response: 15935442
 Conc: 372.45 ng/ml



#24 AR-1248-4

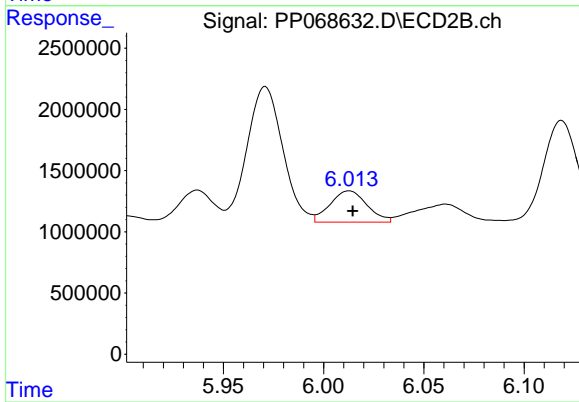
R.T.: 5.616 min
 Delta R.T.: -0.001 min
 Response: 13994135
 Conc: 360.41 ng/ml



#25 AR-1248-5

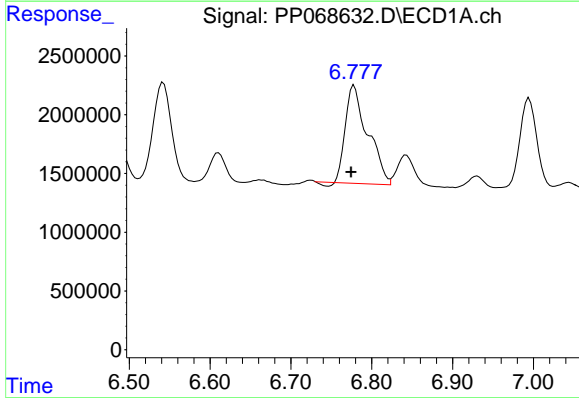
R.T.: 6.843 min
 Delta R.T.: 0.003 min
 Response: 3762118
 Conc: 90.57 ng/ml

Instrument :
 ECD_P
 ClientSampleId :



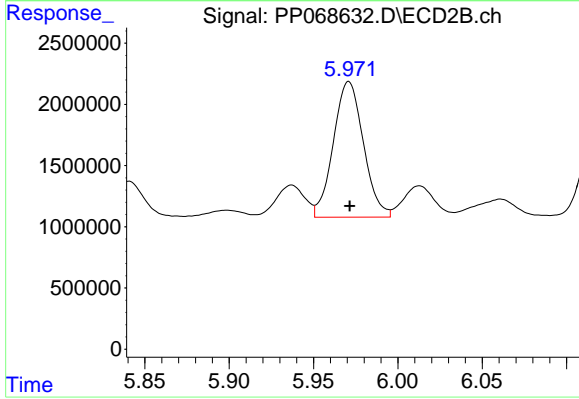
#25 AR-1248-5

R.T.: 6.013 min
 Delta R.T.: -0.002 min
 Response: 3296038
 Conc: 88.92 ng/ml



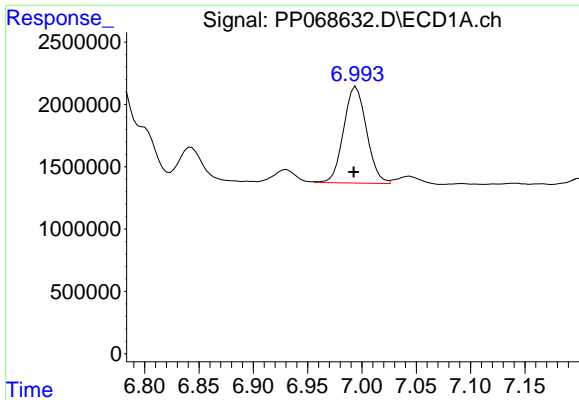
#26 AR-1254-1

R.T.: 6.778 min
 Delta R.T.: 0.004 min
 Response: 15935442
 Conc: 307.12 ng/ml



#26 AR-1254-1

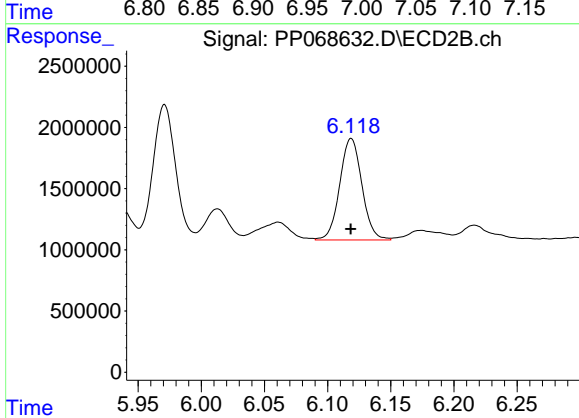
R.T.: 5.971 min
 Delta R.T.: 0.000 min
 Response: 13754491
 Conc: 226.81 ng/ml



#27 AR-1254-2

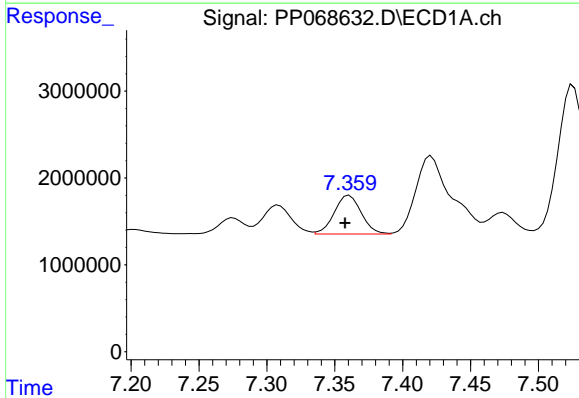
R.T.: 6.995 min
 Delta R.T.: 0.002 min
 Response: 11356712
 Conc: 166.43 ng/ml

Instrument :
 ECD_P
 ClientSampleId :



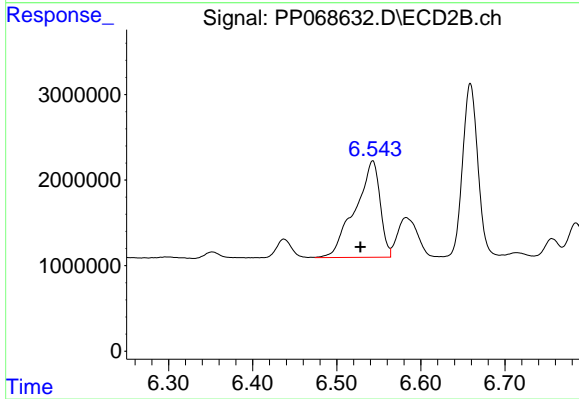
#27 AR-1254-2

R.T.: 6.119 min
 Delta R.T.: 0.000 min
 Response: 10155683
 Conc: 192.58 ng/ml



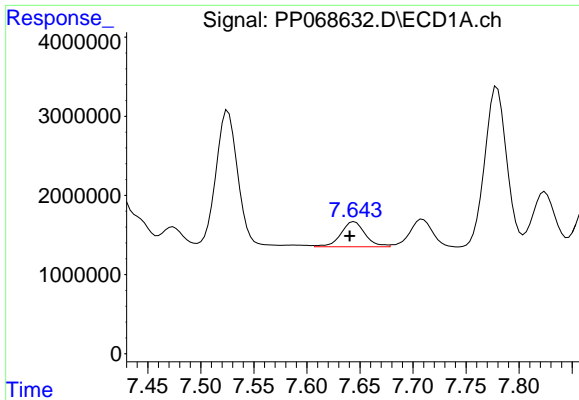
#28 AR-1254-3

R.T.: 7.361 min
 Delta R.T.: 0.003 min
 Response: 6170462
 Conc: 86.35 ng/ml



#28 AR-1254-3

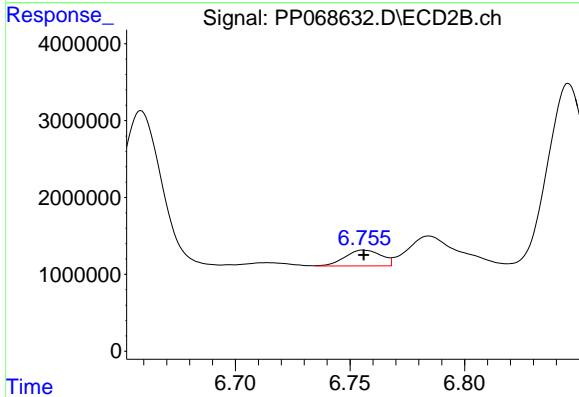
R.T.: 6.543 min
 Delta R.T.: 0.015 min
 Response: 23278407
 Conc: 279.58 ng/ml



#29 AR-1254-4

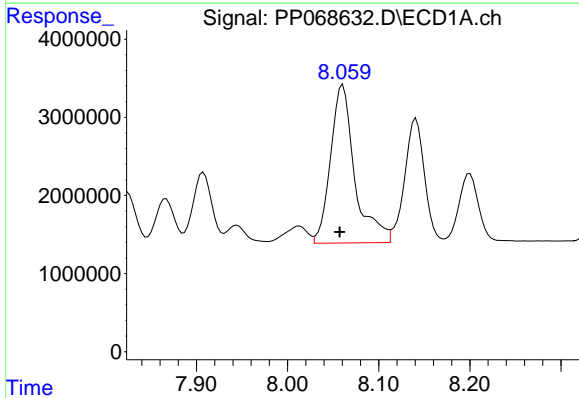
R.T.: 7.645 min
 Delta R.T.: 0.004 min
 Response: 5047251
 Conc: 93.79 ng/ml

Instrument :
 ECD_P
 ClientSampleId :



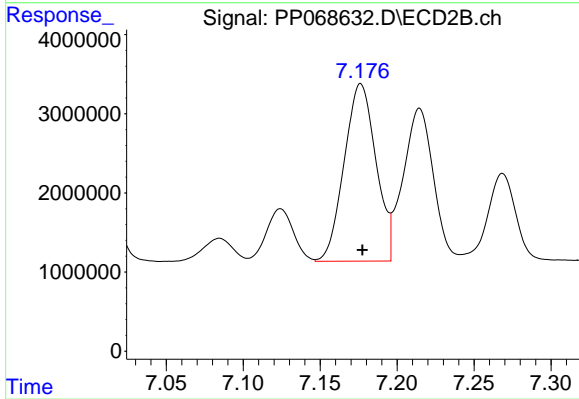
#29 AR-1254-4

R.T.: 6.756 min
 Delta R.T.: 0.000 min
 Response: 2251647
 Conc: 46.30 ng/ml



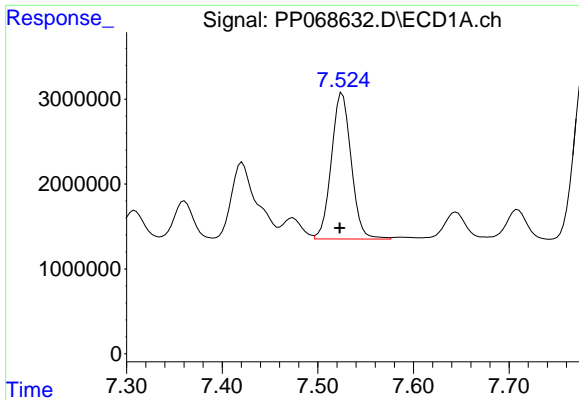
#30 AR-1254-5

R.T.: 8.061 min
 Delta R.T.: 0.003 min
 Response: 37454719
 Conc: 597.68 ng/ml



#30 AR-1254-5

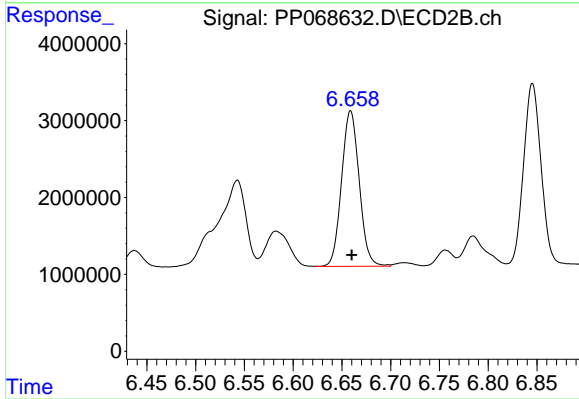
R.T.: 7.176 min
 Delta R.T.: -0.001 min
 Response: 32209920
 Conc: 431.57 ng/ml



#31 AR-1260-1

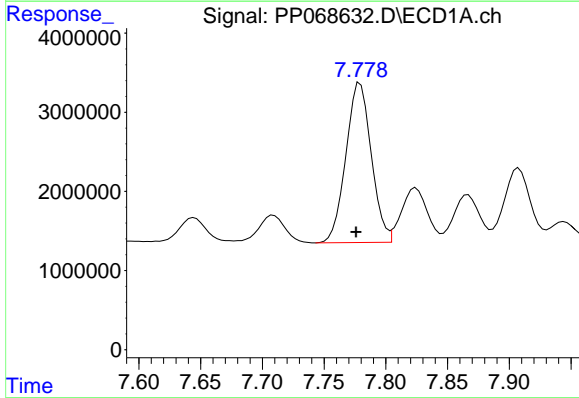
R.T.: 7.526 min
 Delta R.T.: 0.003 min
 Response: 24724363
 Conc: 456.98 ng/ml

Instrument :
 ECD_P
 ClientSampleId :



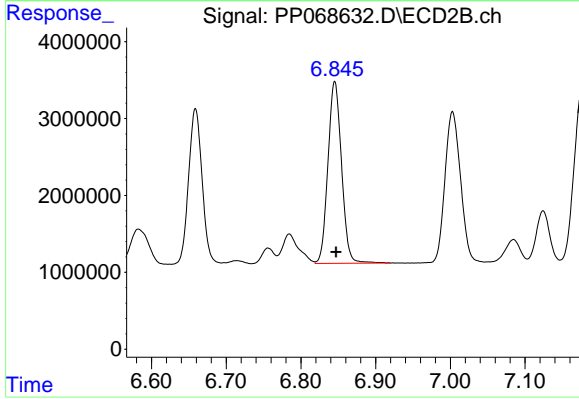
#31 AR-1260-1

R.T.: 6.659 min
 Delta R.T.: -0.001 min
 Response: 25488614
 Conc: 458.03 ng/ml



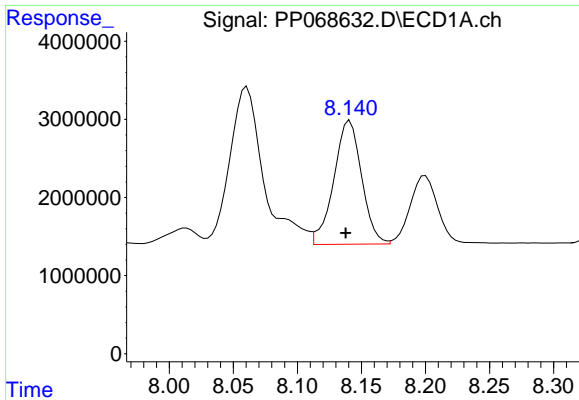
#32 AR-1260-2

R.T.: 7.779 min
 Delta R.T.: 0.003 min
 Response: 28880141
 Conc: 454.01 ng/ml



#32 AR-1260-2

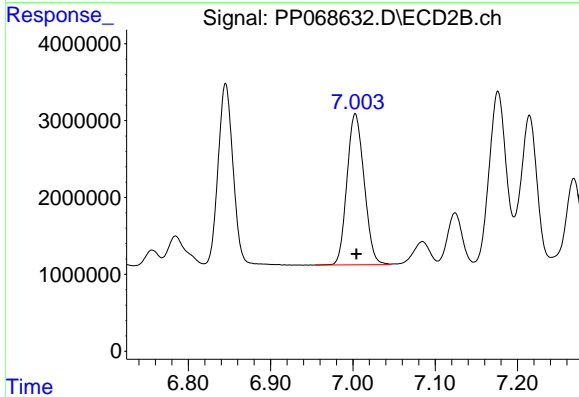
R.T.: 6.845 min
 Delta R.T.: -0.002 min
 Response: 29902623
 Conc: 451.46 ng/ml



#33 AR-1260-3

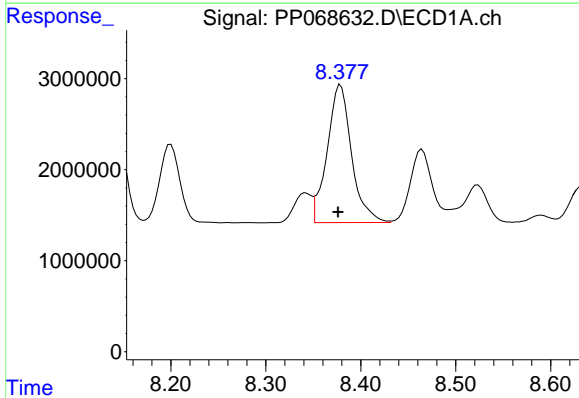
R.T.: 8.141 min
 Delta R.T.: 0.003 min
 Response: 23959279
 Conc: 445.41 ng/ml

Instrument :
 ECD_P
 ClientSampleId :



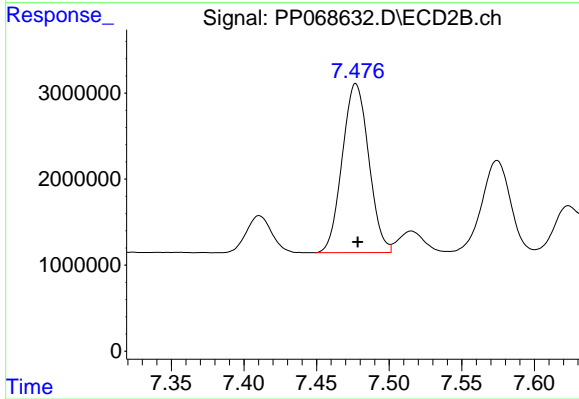
#33 AR-1260-3

R.T.: 7.003 min
 Delta R.T.: -0.002 min
 Response: 28459467
 Conc: 459.83 ng/ml



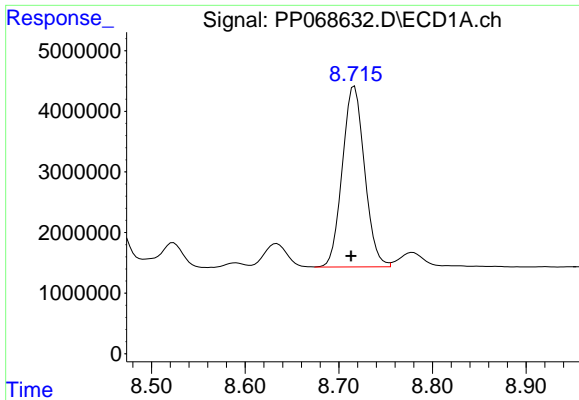
#34 AR-1260-4

R.T.: 8.379 min
 Delta R.T.: 0.002 min
 Response: 27110339
 Conc: 435.66 ng/ml



#34 AR-1260-4

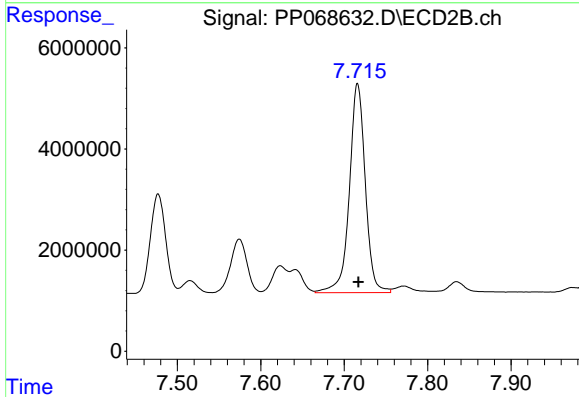
R.T.: 7.477 min
 Delta R.T.: -0.001 min
 Response: 24959504
 Conc: 473.28 ng/ml



#35 AR-1260-5

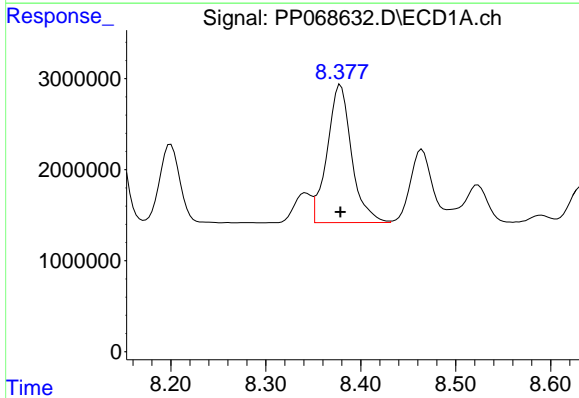
R.T.: 8.717 min
 Delta R.T.: 0.004 min
 Response: 49174844
 Conc: 434.47 ng/ml

Instrument :
 ECD_P
 ClientSampleId :



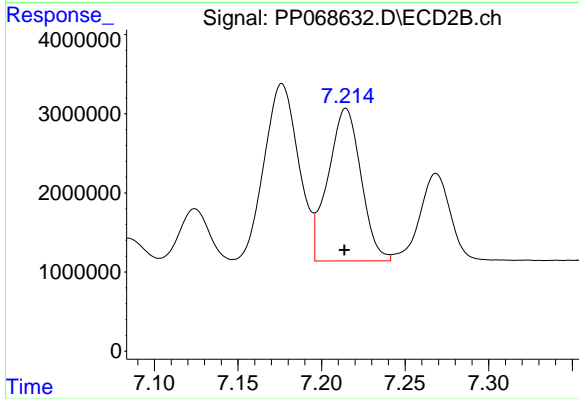
#35 AR-1260-5

R.T.: 7.716 min
 Delta R.T.: 0.000 min
 Response: 54841287
 Conc: 460.56 ng/ml



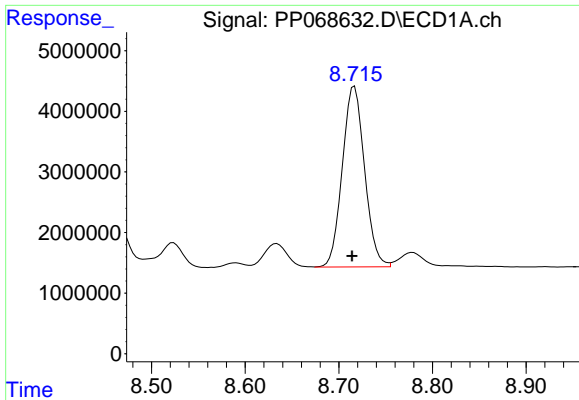
#36 AR-1262-1

R.T.: 8.379 min
 Delta R.T.: 0.000 min
 Response: 27110339
 Conc: 365.70 ng/ml



#36 AR-1262-1

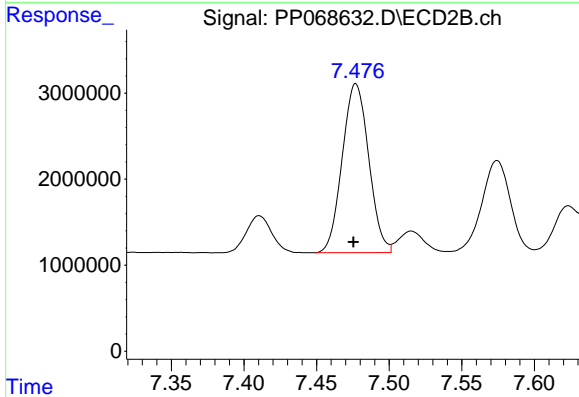
R.T.: 7.215 min
 Delta R.T.: 0.000 min
 Response: 26413325
 Conc: 340.39 ng/ml



#37 AR-1262-2

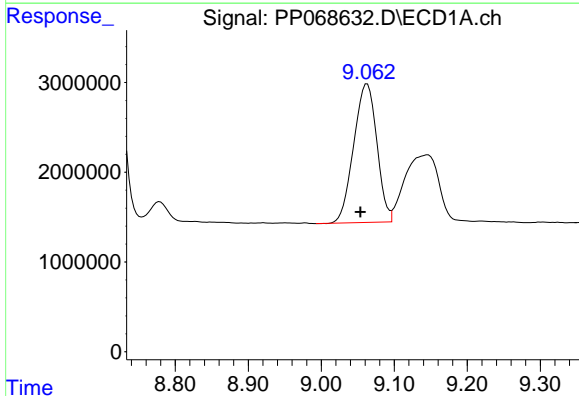
R.T.: 8.717 min
 Delta R.T.: 0.002 min
 Response: 49174844
 Conc: 381.20 ng/ml

Instrument :
 ECD_P
 ClientSampleId :



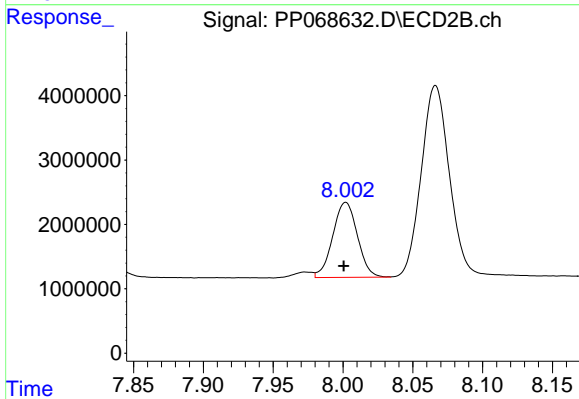
#37 AR-1262-2

R.T.: 7.477 min
 Delta R.T.: 0.002 min
 Response: 24959504
 Conc: 353.06 ng/ml



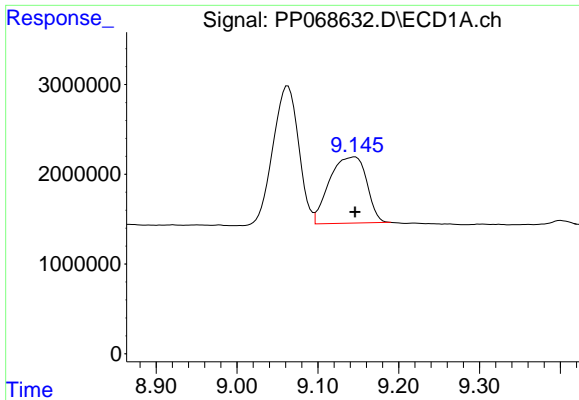
#38 AR-1262-3

R.T.: 9.063 min
 Delta R.T.: 0.009 min
 Response: 34009565
 Conc: 355.45 ng/ml



#38 AR-1262-3

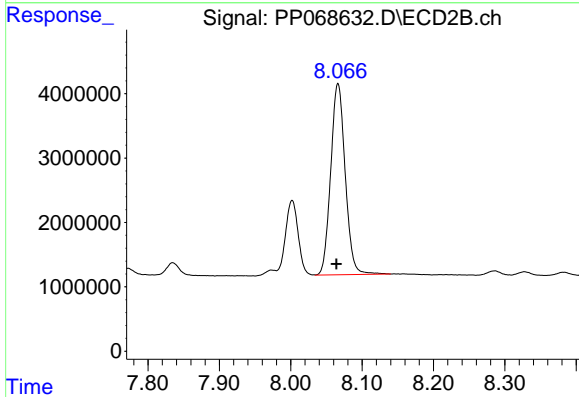
R.T.: 8.002 min
 Delta R.T.: 0.002 min
 Response: 14355076
 Conc: 243.94 ng/ml



#39 AR-1262-4

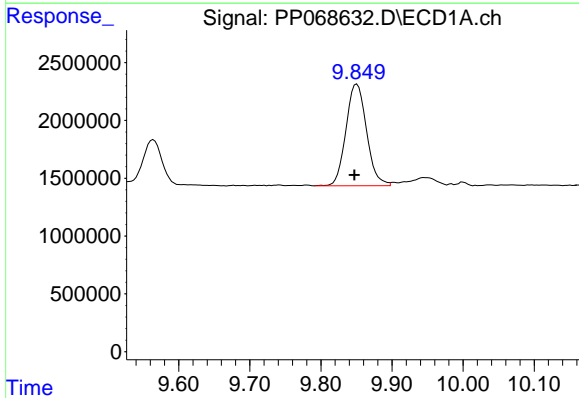
R.T.: 9.146 min
 Delta R.T.: 0.000 min
 Response: 23575116
 Conc: 308.63 ng/ml

Instrument :
 ECD_P
 ClientSampleId :



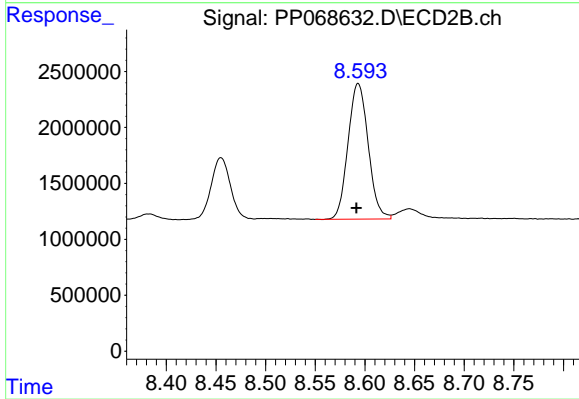
#39 AR-1262-4

R.T.: 8.066 min
 Delta R.T.: 0.002 min
 Response: 41952511
 Conc: 404.94 ng/ml



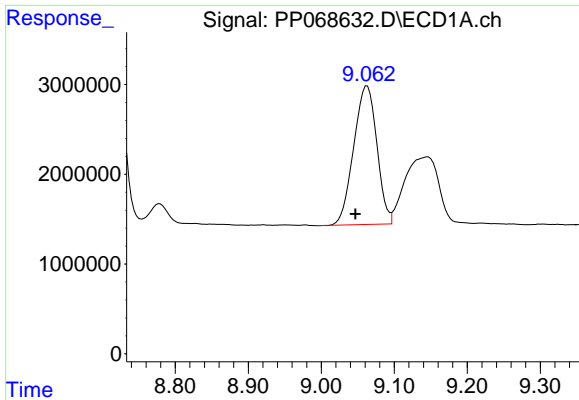
#40 AR-1262-5

R.T.: 9.851 min
 Delta R.T.: 0.004 min
 Response: 17746871
 Conc: 331.82 ng/ml



#40 AR-1262-5

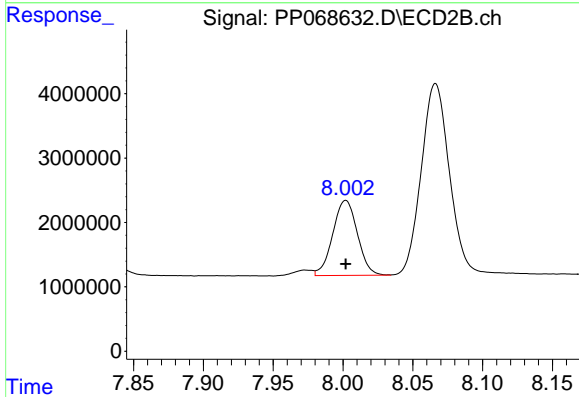
R.T.: 8.593 min
 Delta R.T.: 0.002 min
 Response: 17151078
 Conc: 338.34 ng/ml



#41 AR-1268-1

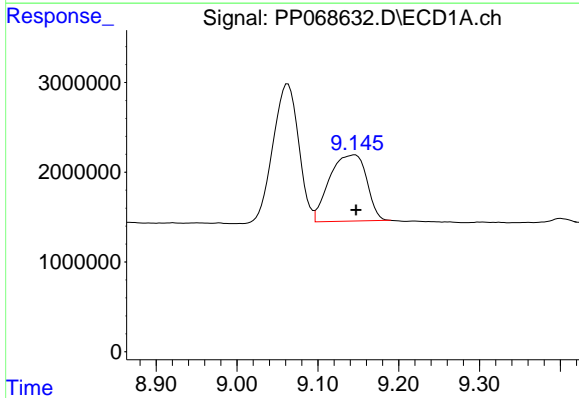
R.T.: 9.063 min
 Delta R.T.: 0.016 min
 Response: 34009565
 Conc: 220.42 ng/ml

Instrument :
 ECD_P
 ClientSampleId :



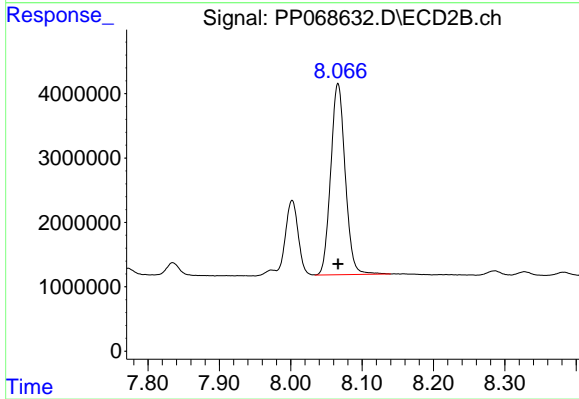
#41 AR-1268-1

R.T.: 8.002 min
 Delta R.T.: 0.000 min
 Response: 14355076
 Conc: 92.18 ng/ml



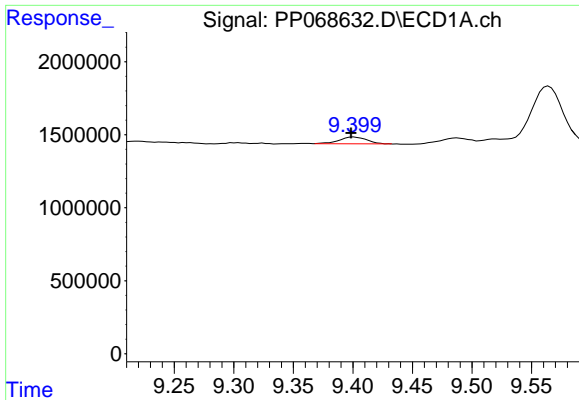
#42 AR-1268-2

R.T.: 9.146 min
 Delta R.T.: -0.001 min
 Response: 23575116
 Conc: 168.41 ng/ml



#42 AR-1268-2

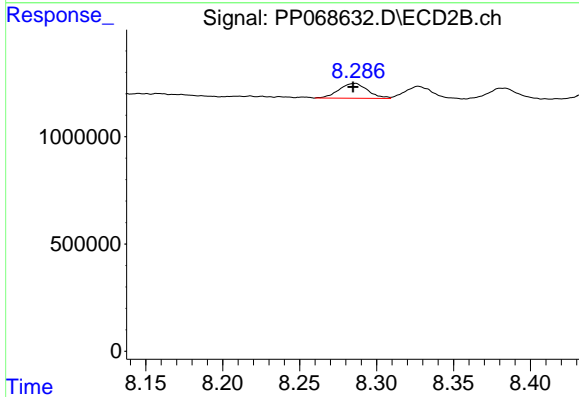
R.T.: 8.066 min
 Delta R.T.: 0.000 min
 Response: 41952511
 Conc: 296.36 ng/ml



#43 AR-1268-3

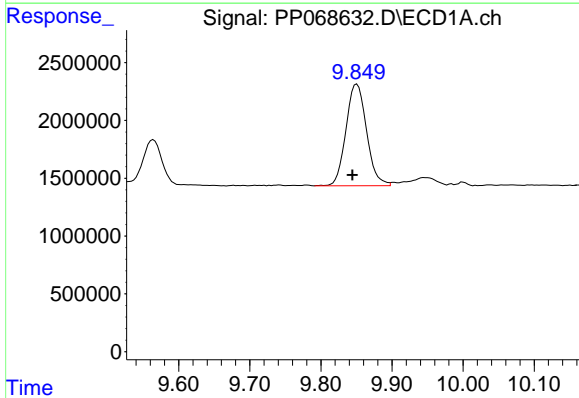
R.T.: 9.401 min
 Delta R.T.: 0.002 min
 Response: 711024
 Conc: 5.66 ng/ml

Instrument :
 ECD_P
 ClientSampleId :



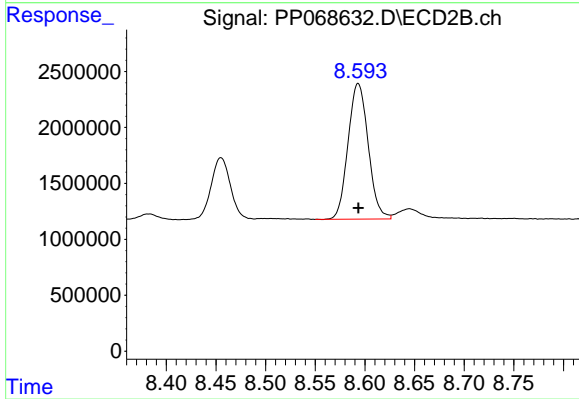
#43 AR-1268-3

R.T.: 8.286 min
 Delta R.T.: 0.001 min
 Response: 900428
 Conc: 7.23 ng/ml



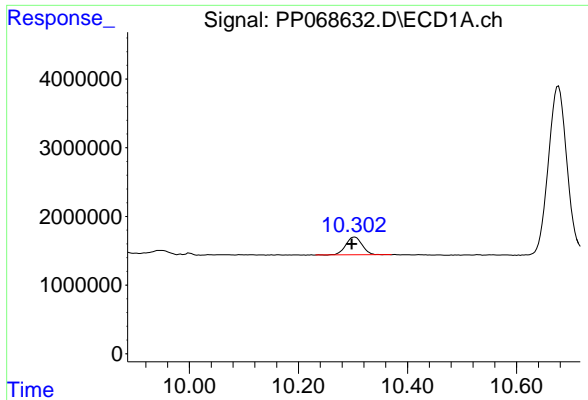
#44 AR-1268-4

R.T.: 9.851 min
 Delta R.T.: 0.006 min
 Response: 17746871
 Conc: 332.11 ng/ml



#44 AR-1268-4

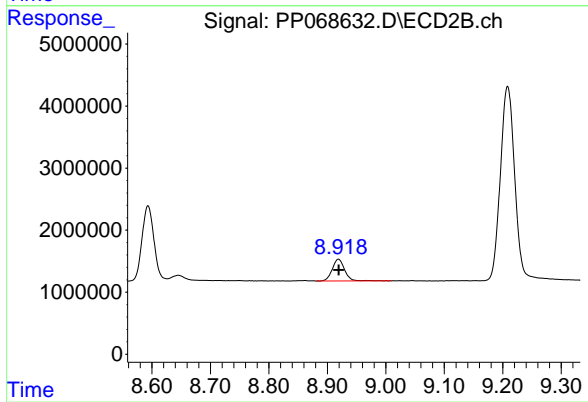
R.T.: 8.593 min
 Delta R.T.: 0.000 min
 Response: 17151078
 Conc: 314.10 ng/ml



#45 AR-1268-5

R.T.: 10.303 min
Delta R.T.: 0.006 min
Response: 5392969
Conc: 13.59 ng/ml

Instrument :
ECD_P
ClientSampleId :



#45 AR-1268-5

R.T.: 8.919 min
Delta R.T.: 0.000 min
Response: 5175361
Conc: 13.74 ng/ml