

Data Path : Z:\pestpcbsrv\HPCHEM1\ECD_P\Data\PP112024\
 Data File : PP068649.D
 Signal(s) : Signal #1: ECD1A.ch Signal #2: ECD2B.ch
 Acq On : 21 Nov 2024 01:40
 Operator : YP\AJ
 Sample : AR1248CCC500
 Misc :
 ALS Vial : 5 Sample Multiplier: 1

Instrument :
 ECD_P
 ClientSampleId :

Integration File signal 1: autoint1.e
 Integration File signal 2: autoint2.e
 Quant Time: Nov 21 02:52:44 2024
 Quant Method : Z:\pestpcbsrv\HPCHEM1\ECD_P\methods\PP110724.M
 Quant Title : GC EXTRACTABLES
 QLast Update : Fri Nov 08 11:04:08 2024
 Response via : Initial Calibration
 Integrator: ChemStation

Volume Inj. : 2 µl
 Signal #1 Phase : ZB-MR1 Signal #2 Phase: ZB-MR2
 Signal #1 Info : 30Mx0.32mmx 0.50µ Signal #2 Info : 30M x 0.32mm x 0.25µm

Compound	RT#1	RT#2	Resp#1	Resp#2	ng/ml	ng/ml
System Monitoring Compounds						
1) SA Tetrachlo...	4.758	4.051	49985549	49712791	51.499	51.341
2) SA Decachlor...	10.678	9.208	59208368	56647122	47.311	50.078
Target Compounds						
3) L1 AR-1016-1	5.923	5.156	11796819	11102448	328.272	335.958
4) L1 AR-1016-2	5.946	5.176	14004063	11151865	264.476	238.580
5) L1 AR-1016-3	6.009	5.358	7050898	7470079	212.963	276.258 #
6) L1 AR-1016-4	6.107	5.396	7873045	15920662	299.560	674.748 #
7) L1 AR-1016-5	6.401	5.615	18978343	19306488	672.800	651.319
8) L2 AR-1221-1	4.959	4.266	298662	74949	22.022	5.943 #
9) L2 AR-1221-2	5.065	4.358	1027206	888485	101.849	90.913
10) L2 AR-1221-3	5.124	4.430	1023195	1043517	33.814	34.224
11) L3 AR-1232-1	5.124	4.430	1023195	1043517	43.877	44.214
12) L3 AR-1232-2	5.656	5.176	4912995	11151865	328.525	511.902 #
13) L3 AR-1232-3	5.946	5.358	14004063	7470079	558.953	666.338
14) L3 AR-1232-4	6.107	5.440	7873045	16810462	636.043	1534.289 #
15) L3 AR-1232-5	6.196	5.615	17474609	19306488	1757.160	1567.080
16) L4 AR-1242-1	5.923	5.156	11796819	11102448	394.892	399.516
17) L4 AR-1242-2	5.946	5.176	14004063	11151865	317.538	288.721
18) L4 AR-1242-3	6.009	5.358	7050898	7470079	253.097	351.037 #
19) L4 AR-1242-4	6.107	5.440	7873045	16810462	359.829	737.505 #
20) L4 AR-1242-5	6.841	5.969	19318174	25725554	795.628	937.132
21) L5 AR-1248-1	5.923	5.156	11796819	11102448	522.806	508.181
22) L5 AR-1248-2	6.196	5.396	17474609	15920662	519.913	498.002
23) L5 AR-1248-3	6.401	5.440	18978343	16810462	519.731	501.682
24) L5 AR-1248-4	6.802	5.615	20132326	19306488	470.539	497.221
25) L5 AR-1248-5	6.841	6.012	19318174	18240402	465.059	492.076
26) L6 AR-1254-1	6.777	5.969	13967287	25725554	269.190	424.221 #
27) L6 AR-1254-2	6.998	6.118	20716346	8763846	303.592	166.186 #
28) L6 AR-1254-3	7.360	6.527	11720451	13097142	164.019	157.302
29) L6 AR-1254-4	7.642	6.756	8271166	8322546	153.698	171.149
30) L6 AR-1254-5	8.062	7.177	1837701	2766362	29.325	37.066 #
31) L7 AR-1260-1	7.527	6.675	1516448	6526368	28.028	117.277 #
32) L7 AR-1260-2	7.775	6.844	1677472	1395581	26.371	21.070
33) L7 AR-1260-3	8.092f	7.002	133672	1494087	2.485	24.140 #
34) L7 AR-1260-4	8.362	7.475	984897	233963	15.827	4.436 #
35) L7 AR-1260-5	8.717	7.715	472946	495979	4.179	4.165
36) L8 AR-1262-1	8.362	7.249f	984897	402816	13.286	5.191 #
37) L8 AR-1262-2	8.717	7.475	472946	233963	3.666	3.309
38) L8 AR-1262-3	9.068	8.004	306753	150729	3.206	2.561
39) L8 AR-1262-4	0.000	8.063	0	565050	N.D.	5.454 #
40) L8 AR-1262-5	0.000	8.598	0	126288	N.D.	2.491 #
41) L9 AR-1268-1	9.068	8.004	306753	150729	1.988	0.968 #

Data Path : Z:\pestpcbsrv\HPCHEM1\ECD_P\Data\PP112024\
 Data File : PP068649.D
 Signal(s) : Signal #1: ECD1A.ch Signal #2: ECD2B.ch
 Acq On : 21 Nov 2024 01:40
 Operator : YP\AJ
 Sample : AR1248CCC500
 Misc :
 ALS Vial : 5 Sample Multiplier: 1

Instrument :
 ECD_P
 ClientSampleId :

Integration File signal 1: autoint1.e
 Integration File signal 2: autoint2.e
 Quant Time: Nov 21 02:52:44 2024
 Quant Method : Z:\pestpcbsrv\HPCHEM1\ECD_P\methods\PP110724.M
 Quant Title : GC EXTRACTABLES
 QLast Update : Fri Nov 08 11:04:08 2024
 Response via : Initial Calibration
 Integrator: ChemStation

Volume Inj. : 2 µl
 Signal #1 Phase : ZB-MR1 Signal #2 Phase: ZB-MR2
 Signal #1 Info : 30Mx0.32mmx 0.50µ Signal #2 Info : 30M x 0.32mm x 0.25µm

	Compound	RT#1	RT#2	Resp#1	Resp#2	ng/ml	ng/ml
42)	L9 AR-1268-2	0.000	8.063	0	565050	N.D.	3.992 #
43)	L9 AR-1268-3	0.000	8.287	0	273185	N.D.	2.194 #
44)	L9 AR-1268-4	0.000	8.598	0	126288	N.D.	2.313 #
45)	L9 AR-1268-5	10.308	8.919	466397	446020	1.175	1.184

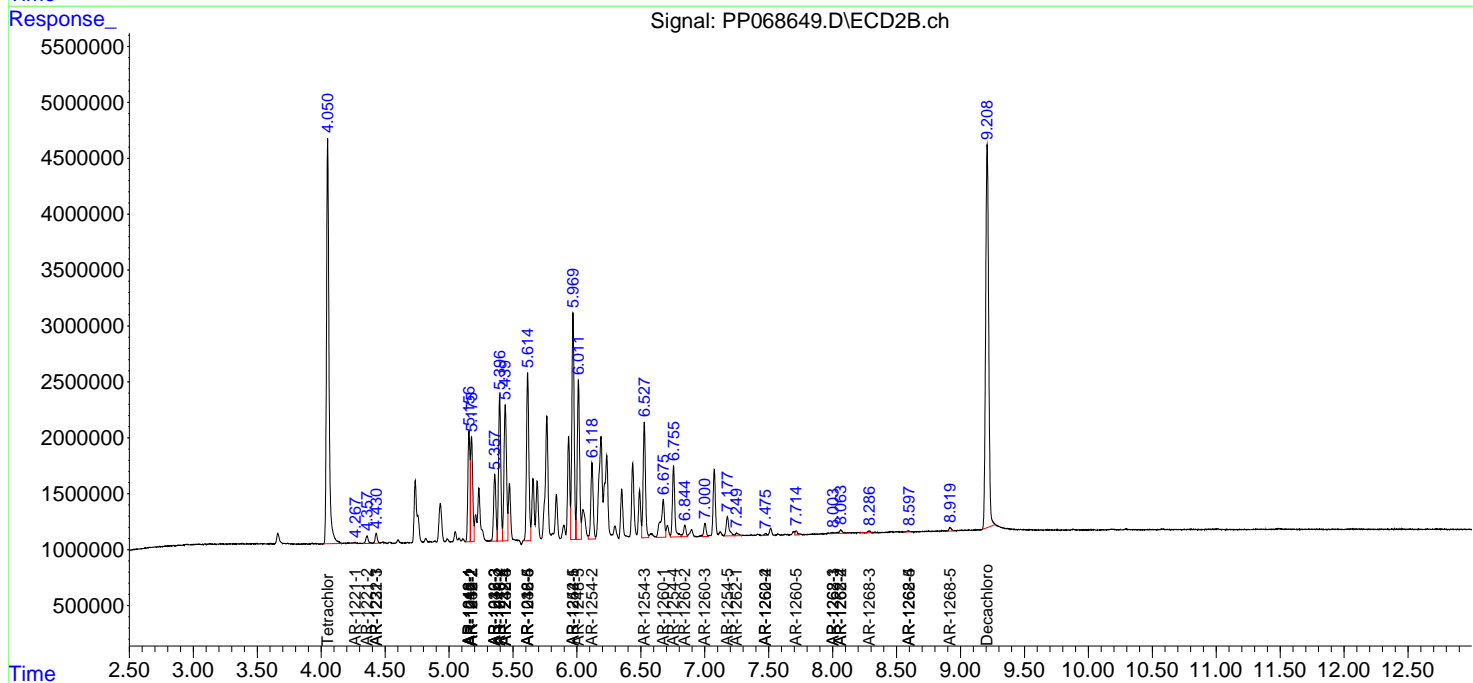
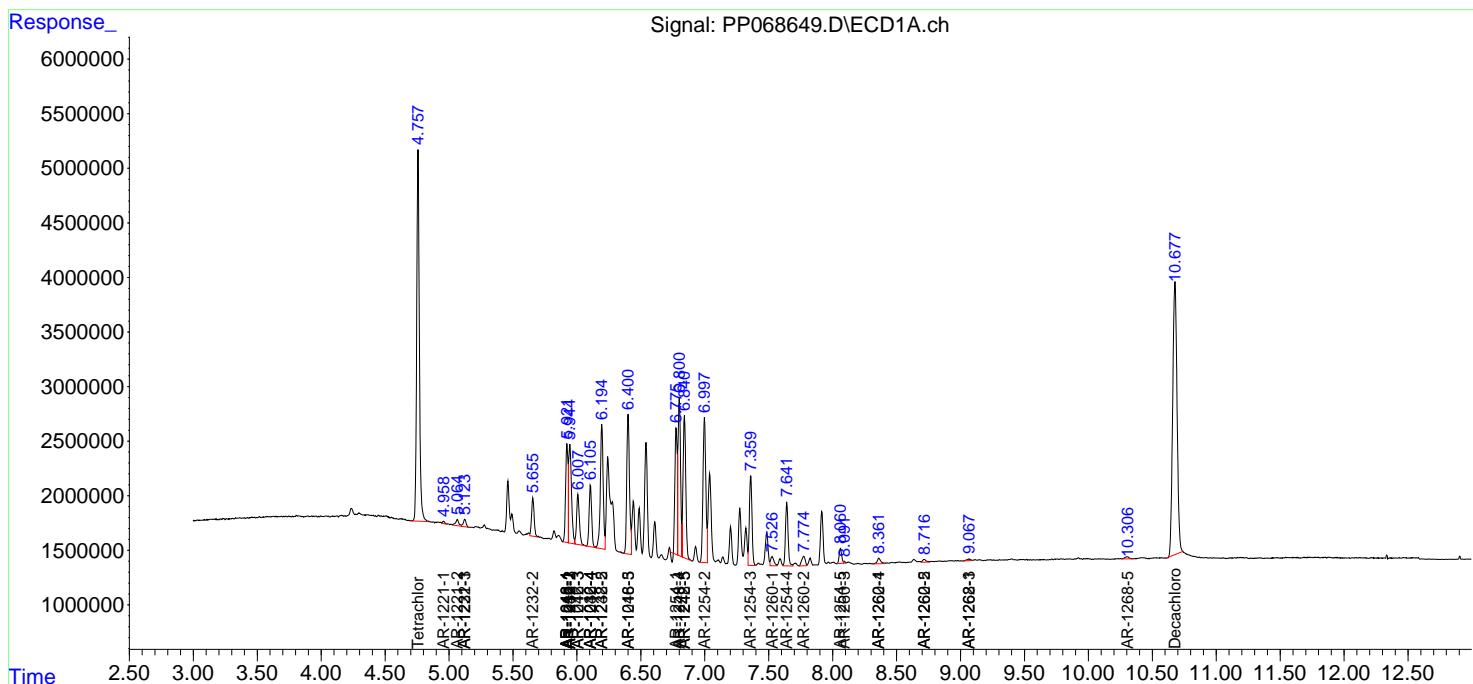
(f)=RT Delta > 1/2 Window (#)=Amounts differ by > 25% (m)=manual int.

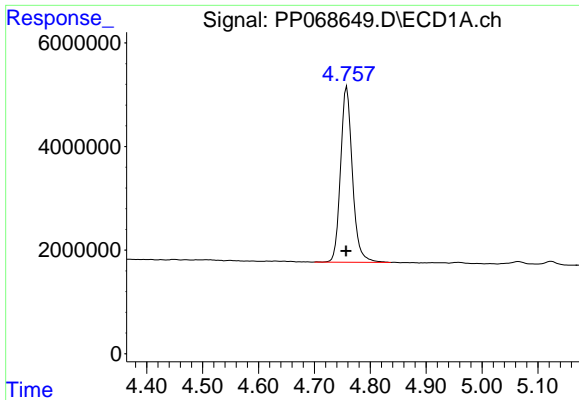
Data Path : Z:\pestpcbsrv\HPCHEM1\ECD_P\Data\PP112024\
 Data File : PP068649.D
 Signal(s) : Signal #1: ECD1A.ch Signal #2: ECD2B.ch
 Acq On : 21 Nov 2024 01:40
 Operator : YP\AJ
 Sample : AR1248CCC500
 Misc :
 ALS Vial : 5 Sample Multiplier: 1

Instrument :
 ECD_P
 ClientSampleId :

Integration File signal 1: autoint1.e
 Integration File signal 2: autoint2.e
 Quant Time: Nov 21 02:52:44 2024
 Quant Method : Z:\pestpcbsrv\HPCHEM1\ECD_P\methods\PP110724.M
 Quant Title : GC EXTRACTABLES
 QLast Update : Fri Nov 08 11:04:08 2024
 Response via : Initial Calibration
 Integrator: ChemStation

Volume Inj. : 2 µl
 Signal #1 Phase : ZB-MR1 Signal #2 Phase: ZB-MR2
 Signal #1 Info : 30Mx0.32mmx 0.50µ Signal #2 Info : 30M x 0.32mm x 0.25µm

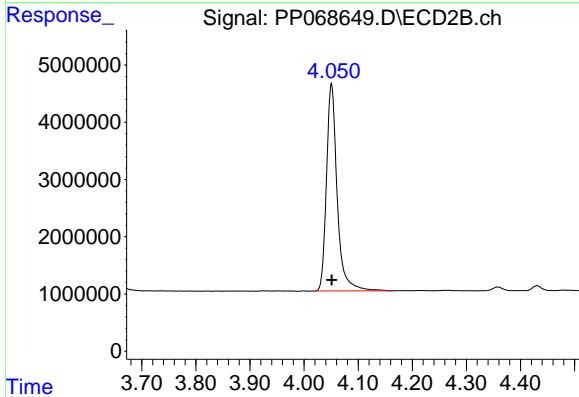




#1 Tetrachloro-m-xylene

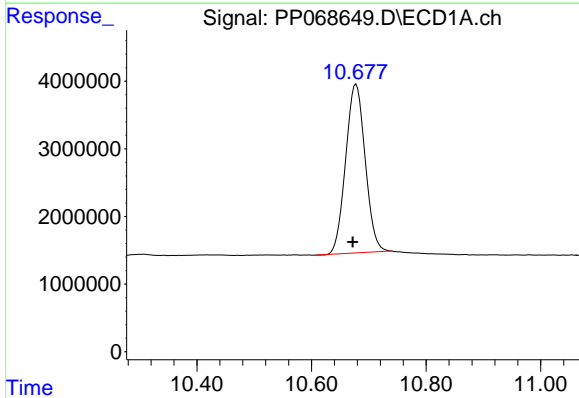
R.T.: 4.758 min
 Delta R.T.: 0.001 min
 Response: 49985549
 Conc: 51.50 ng/ml

Instrument :
 ECD_P
 ClientSampleId :



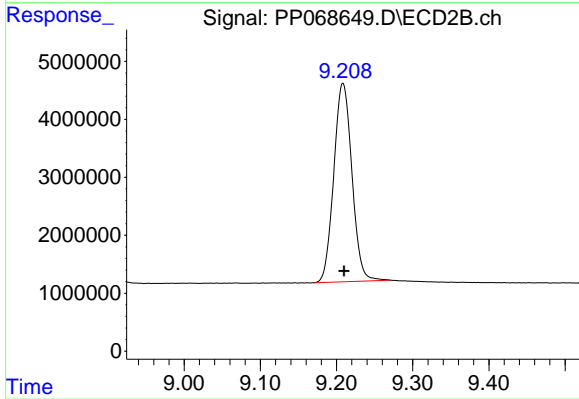
#1 Tetrachloro-m-xylene

R.T.: 4.051 min
 Delta R.T.: 0.000 min
 Response: 49712791
 Conc: 51.34 ng/ml



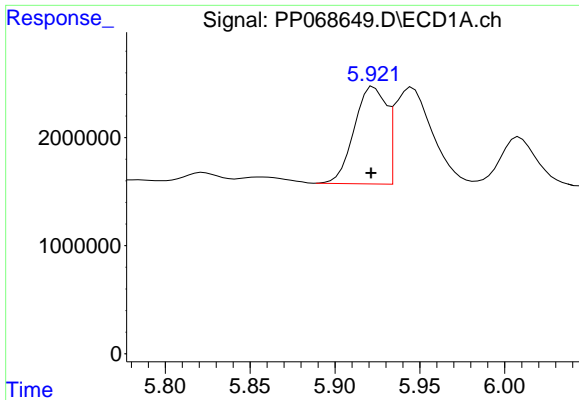
#2 Decachlorobiphenyl

R.T.: 10.678 min
 Delta R.T.: 0.006 min
 Response: 59208368
 Conc: 47.31 ng/ml



#2 Decachlorobiphenyl

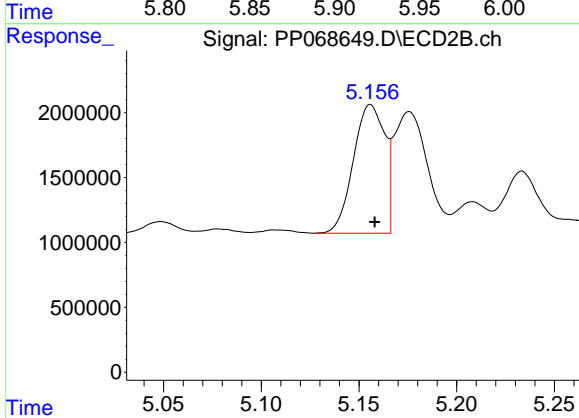
R.T.: 9.208 min
 Delta R.T.: -0.001 min
 Response: 56647122
 Conc: 50.08 ng/ml



#3 AR-1016-1

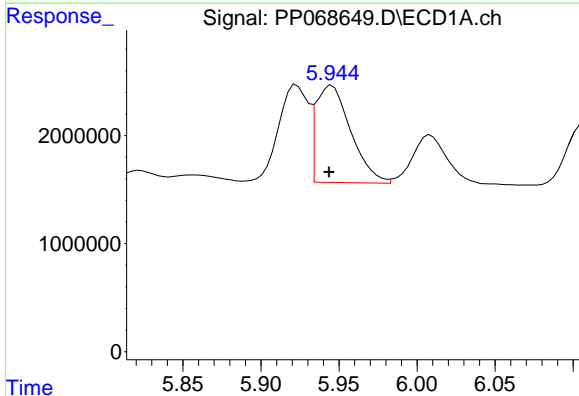
R.T.: 5.923 min
 Delta R.T.: 0.002 min
 Response: 11796819
 Conc: 328.27 ng/ml

Instrument :
 ECD_P
 ClientSampleId :



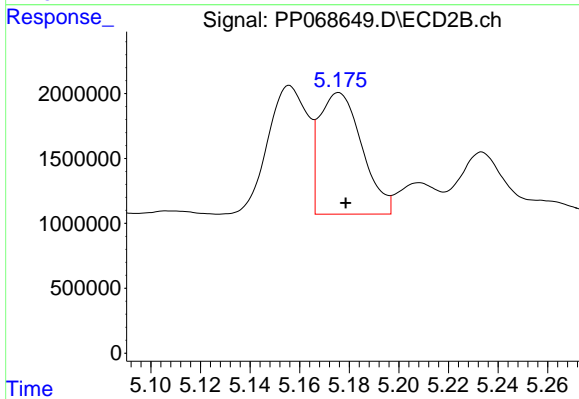
#3 AR-1016-1

R.T.: 5.156 min
 Delta R.T.: -0.002 min
 Response: 11102448
 Conc: 335.96 ng/ml



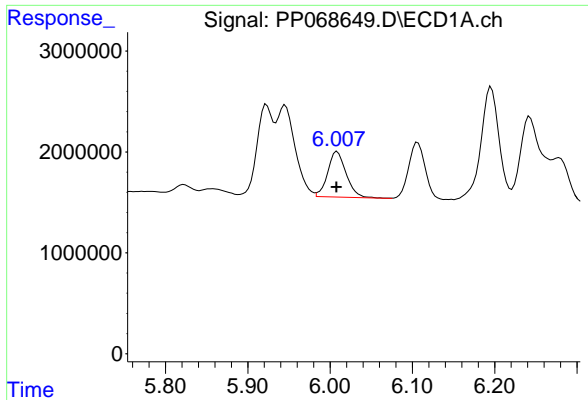
#4 AR-1016-2

R.T.: 5.946 min
 Delta R.T.: 0.002 min
 Response: 14004063
 Conc: 264.48 ng/ml



#4 AR-1016-2

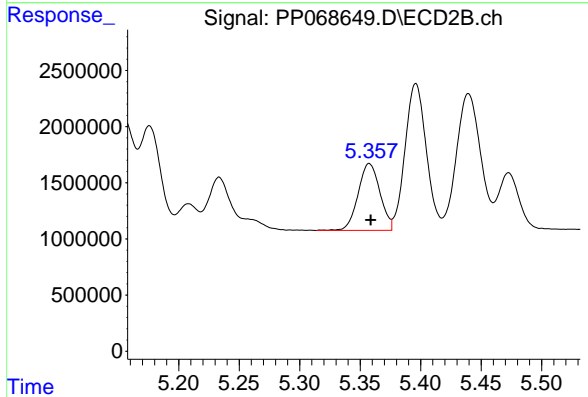
R.T.: 5.176 min
 Delta R.T.: -0.003 min
 Response: 11151865
 Conc: 238.58 ng/ml



#5 AR-1016-3

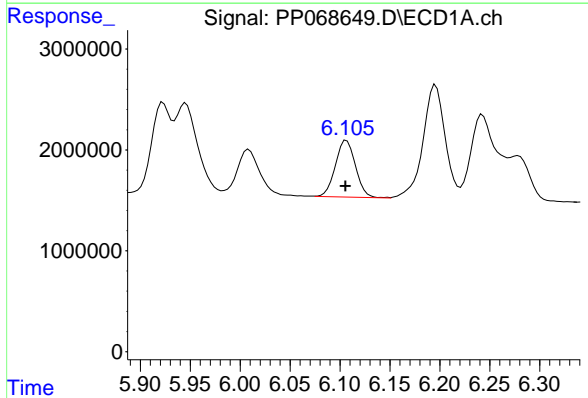
R.T.: 6.009 min
 Delta R.T.: 0.000 min
 Response: 7050898
 Conc: 212.96 ng/ml

Instrument :
 ECD_P
 ClientSampleId :



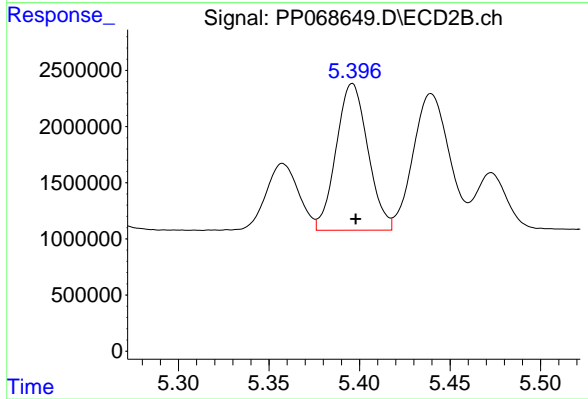
#5 AR-1016-3

R.T.: 5.358 min
 Delta R.T.: -0.001 min
 Response: 7470079
 Conc: 276.26 ng/ml



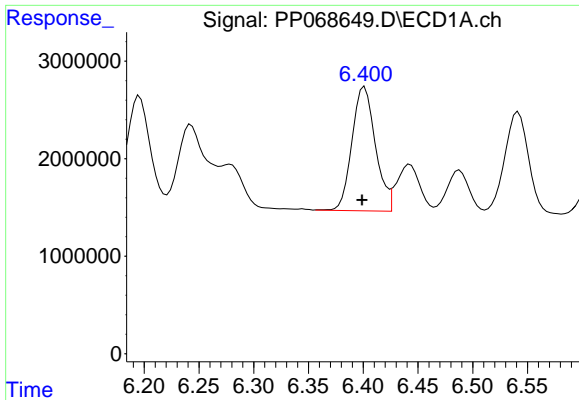
#6 AR-1016-4

R.T.: 6.107 min
 Delta R.T.: 0.001 min
 Response: 7873045
 Conc: 299.56 ng/ml



#6 AR-1016-4

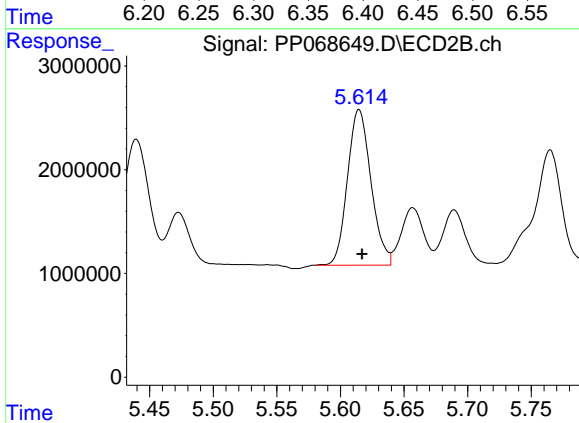
R.T.: 5.396 min
 Delta R.T.: -0.002 min
 Response: 15920662
 Conc: 674.75 ng/ml



#7 AR-1016-5

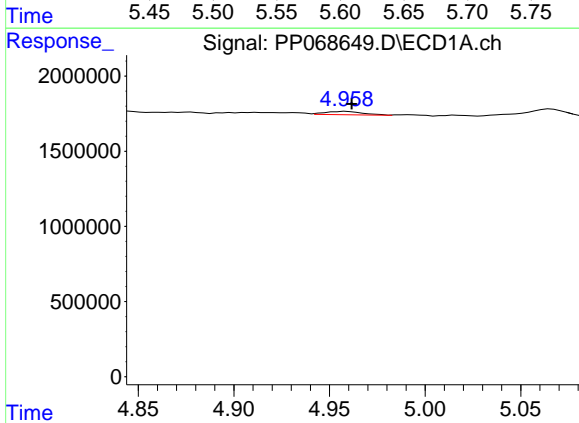
R.T.: 6.401 min
 Delta R.T.: 0.002 min
 Response: 18978343
 Conc: 672.80 ng/ml

Instrument :
 ECD_P
 ClientSampleId :



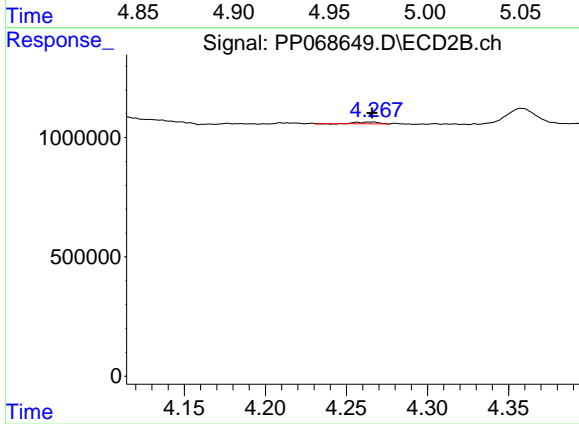
#7 AR-1016-5

R.T.: 5.615 min
 Delta R.T.: -0.002 min
 Response: 19306488
 Conc: 651.32 ng/ml



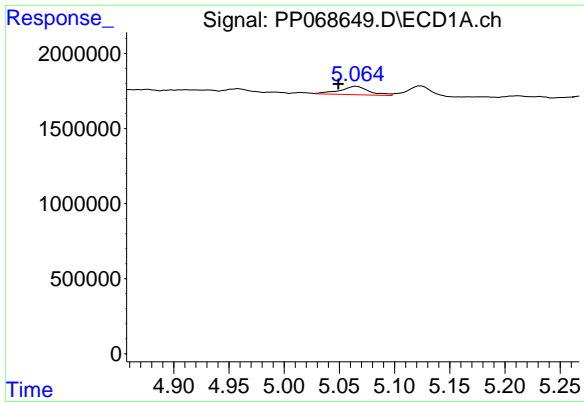
#8 AR-1221-1

R.T.: 4.959 min
 Delta R.T.: -0.002 min
 Response: 298662
 Conc: 22.02 ng/ml



#8 AR-1221-1

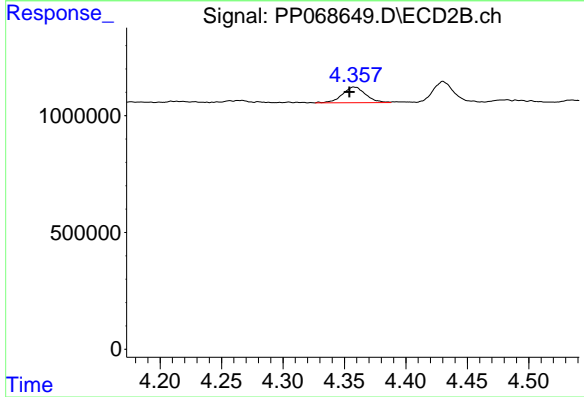
R.T.: 4.266 min
 Delta R.T.: 0.000 min
 Response: 74949
 Conc: 5.94 ng/ml



#9 AR-1221-2

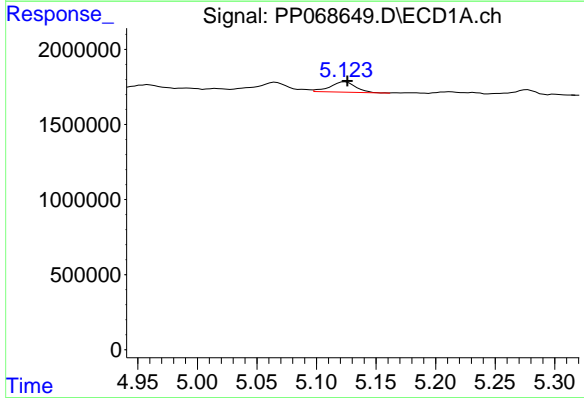
R.T.: 5.065 min
 Delta R.T.: 0.016 min
 Response: 1027206
 Conc: 101.85 ng/ml

Instrument :
 ECD_P
 ClientSampleId :



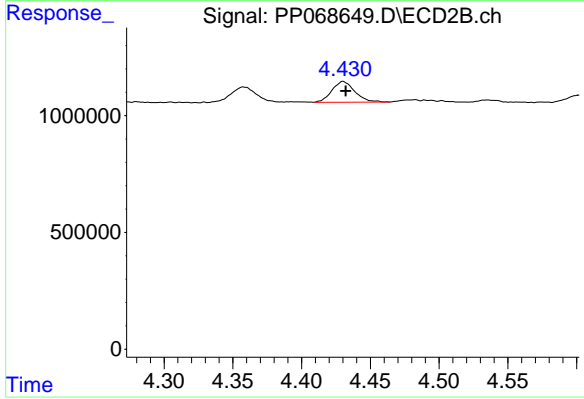
#9 AR-1221-2

R.T.: 4.358 min
 Delta R.T.: 0.004 min
 Response: 888485
 Conc: 90.91 ng/ml



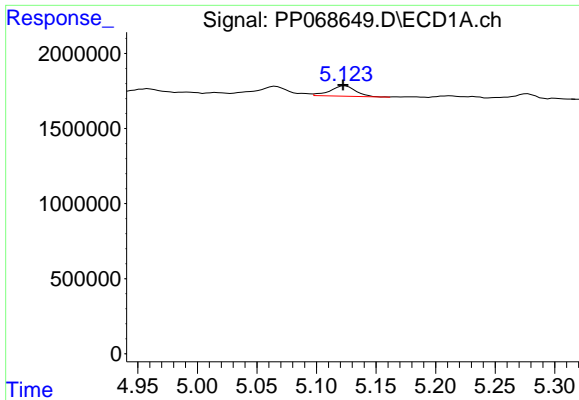
#10 AR-1221-3

R.T.: 5.124 min
 Delta R.T.: -0.002 min
 Response: 1023195
 Conc: 33.81 ng/ml



#10 AR-1221-3

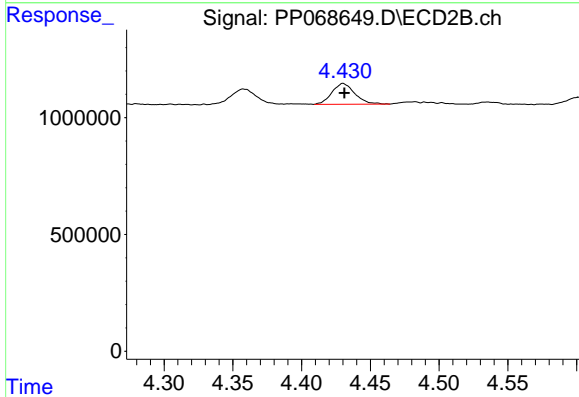
R.T.: 4.430 min
 Delta R.T.: -0.002 min
 Response: 1043517
 Conc: 34.22 ng/ml



#11 AR-1232-1

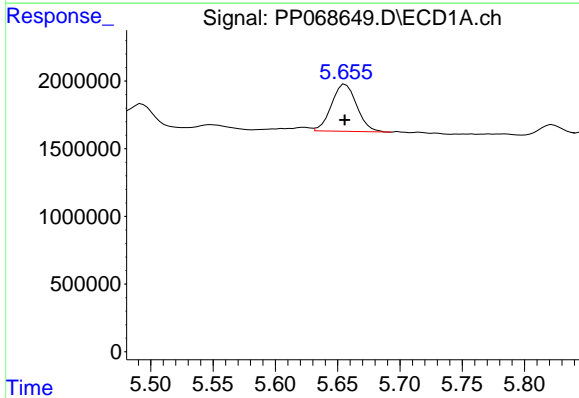
R.T.: 5.124 min
 Delta R.T.: 0.002 min
 Response: 1023195
 Conc: 43.88 ng/ml

Instrument :
 ECD_P
 ClientSampleId :



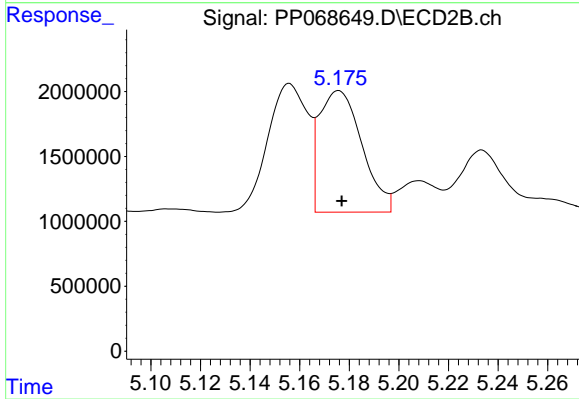
#11 AR-1232-1

R.T.: 4.430 min
 Delta R.T.: 0.000 min
 Response: 1043517
 Conc: 44.21 ng/ml



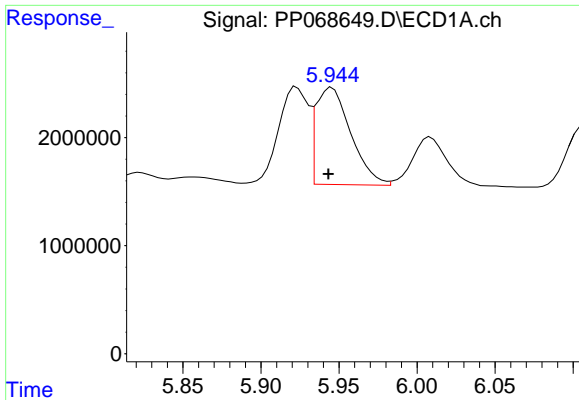
#12 AR-1232-2

R.T.: 5.656 min
 Delta R.T.: 0.000 min
 Response: 4912995
 Conc: 328.52 ng/ml



#12 AR-1232-2

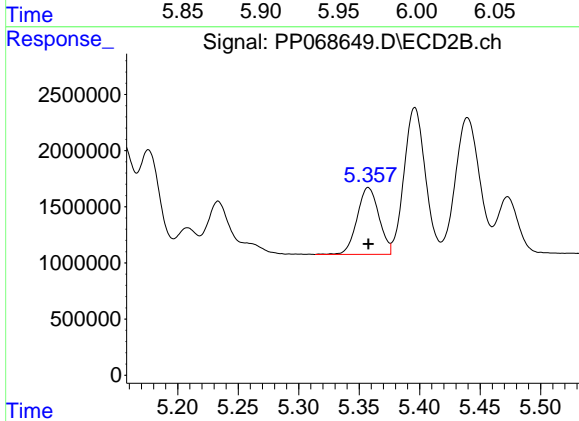
R.T.: 5.176 min
 Delta R.T.: -0.001 min
 Response: 11151865
 Conc: 511.90 ng/ml



#13 AR-1232-3

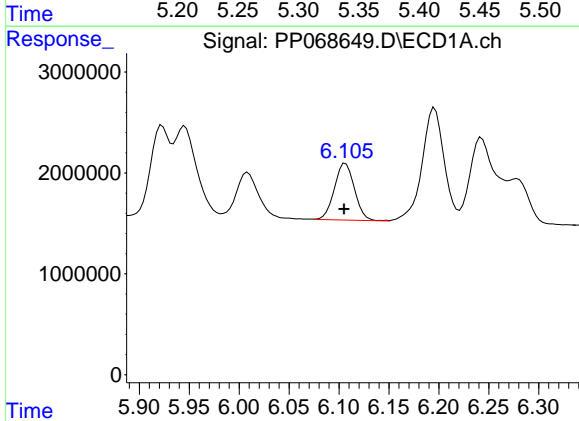
R.T.: 5.946 min
 Delta R.T.: 0.002 min
 Response: 14004063
 Conc: 558.95 ng/ml

Instrument :
 ECD_P
 ClientSampleId :



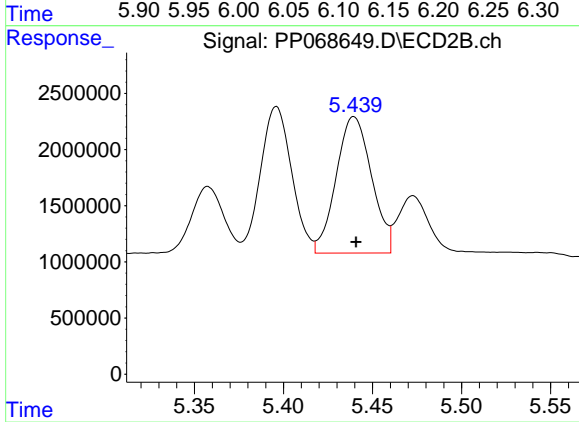
#13 AR-1232-3

R.T.: 5.358 min
 Delta R.T.: 0.000 min
 Response: 7470079
 Conc: 666.34 ng/ml



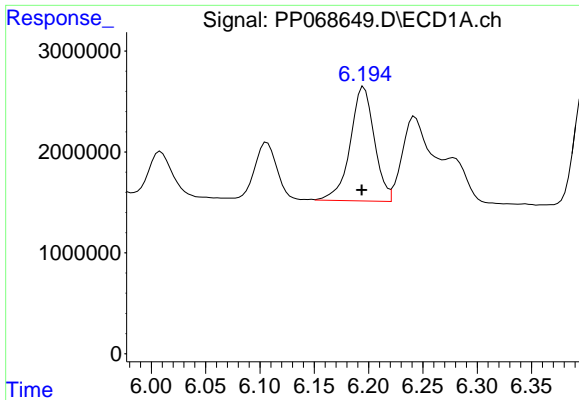
#14 AR-1232-4

R.T.: 6.107 min
 Delta R.T.: 0.001 min
 Response: 7873045
 Conc: 636.04 ng/ml



#14 AR-1232-4

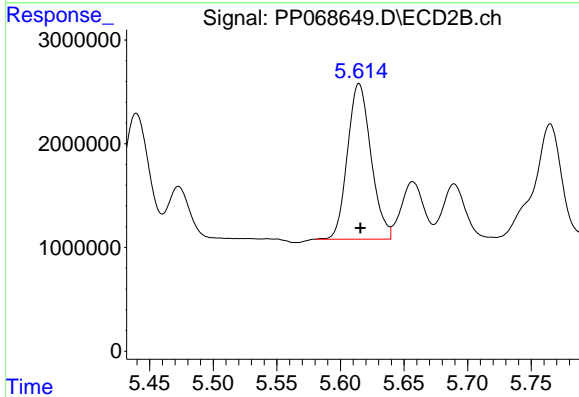
R.T.: 5.440 min
 Delta R.T.: -0.001 min
 Response: 16810462
 Conc: 1534.29 ng/ml



#15 AR-1232-5

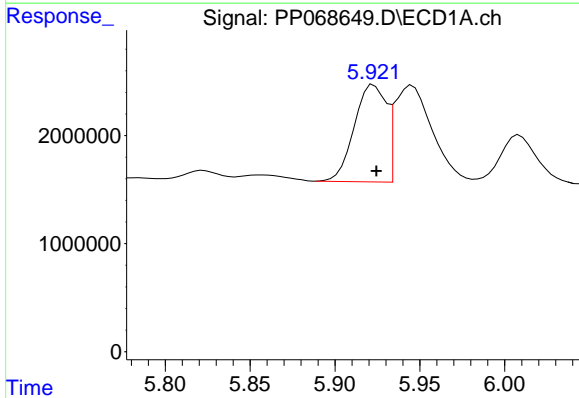
R.T.: 6.196 min
 Delta R.T.: 0.002 min
 Response: 17474609
 Conc: 1757.16 ng/ml

Instrument :
 ECD_P
 ClientSampleId :



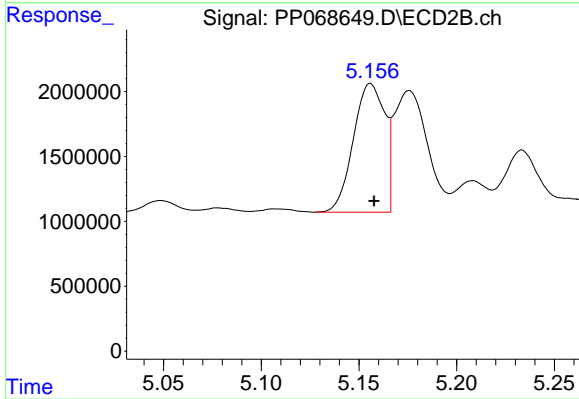
#15 AR-1232-5

R.T.: 5.615 min
 Delta R.T.: -0.001 min
 Response: 19306488
 Conc: 1567.08 ng/ml



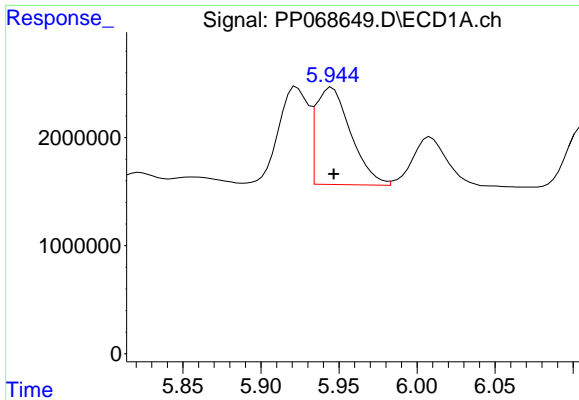
#16 AR-1242-1

R.T.: 5.923 min
 Delta R.T.: -0.002 min
 Response: 11796819
 Conc: 394.89 ng/ml



#16 AR-1242-1

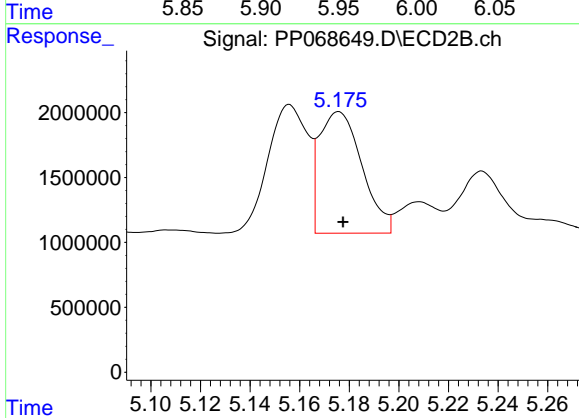
R.T.: 5.156 min
 Delta R.T.: -0.002 min
 Response: 11102448
 Conc: 399.52 ng/ml



#17 AR-1242-2

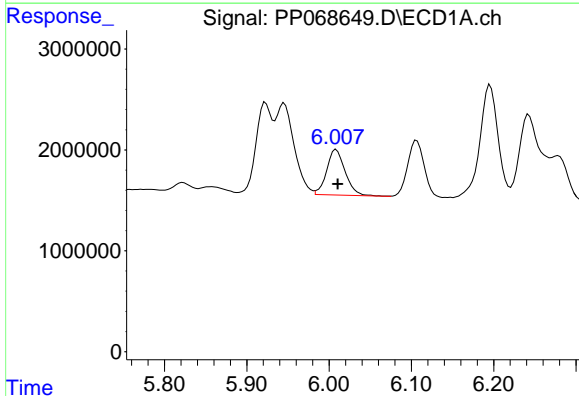
R.T.: 5.946 min
 Delta R.T.: -0.001 min
 Response: 14004063
 Conc: 317.54 ng/ml

Instrument :
 ECD_P
 ClientSampleId :



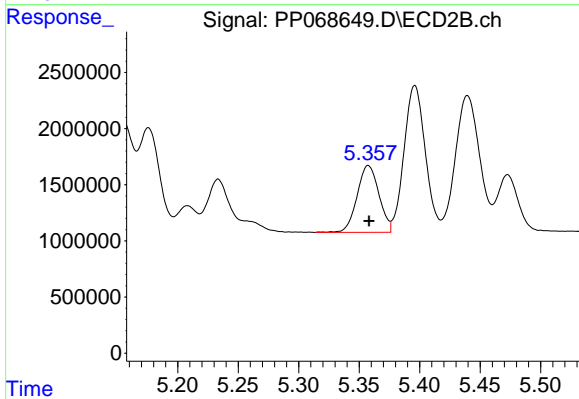
#17 AR-1242-2

R.T.: 5.176 min
 Delta R.T.: -0.002 min
 Response: 11151865
 Conc: 288.72 ng/ml



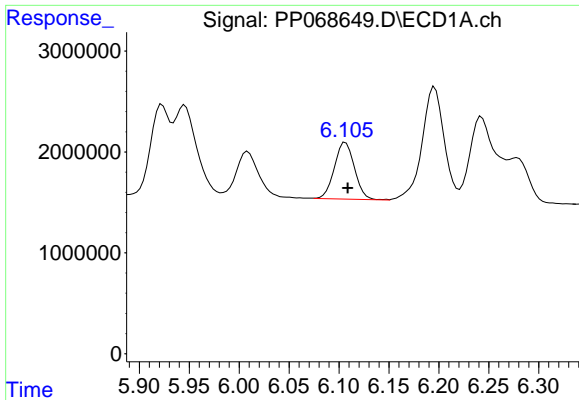
#18 AR-1242-3

R.T.: 6.009 min
 Delta R.T.: -0.002 min
 Response: 7050898
 Conc: 253.10 ng/ml



#18 AR-1242-3

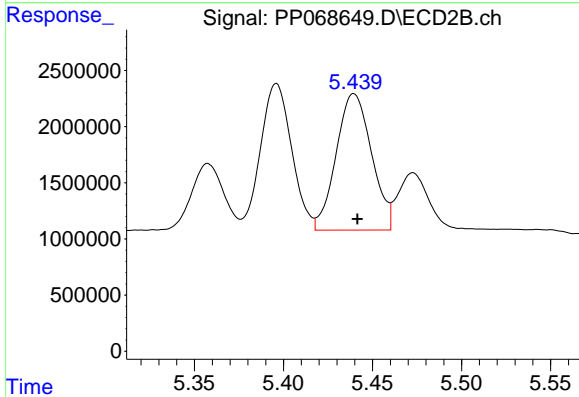
R.T.: 5.358 min
 Delta R.T.: 0.000 min
 Response: 7470079
 Conc: 351.04 ng/ml



#19 AR-1242-4

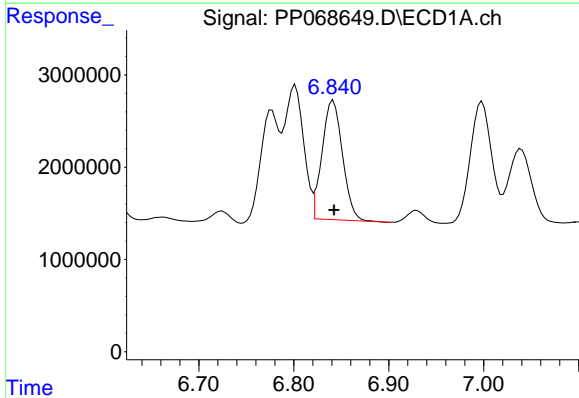
R.T.: 6.107 min
 Delta R.T.: -0.002 min
 Response: 7873045
 Conc: 359.83 ng/ml

Instrument :
 ECD_P
 ClientSampleId :



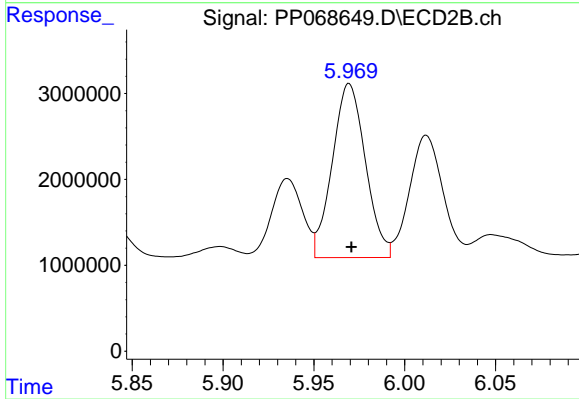
#19 AR-1242-4

R.T.: 5.440 min
 Delta R.T.: -0.002 min
 Response: 16810462
 Conc: 737.51 ng/ml



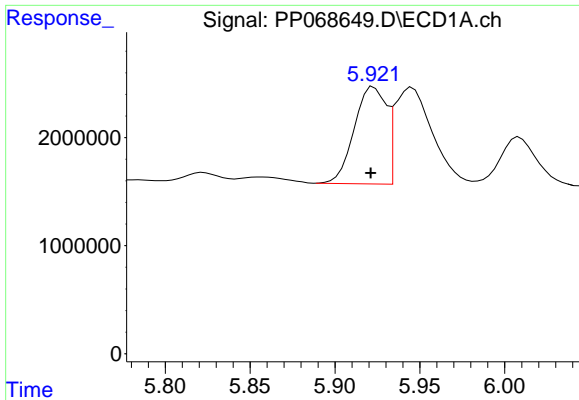
#20 AR-1242-5

R.T.: 6.841 min
 Delta R.T.: 0.000 min
 Response: 19318174
 Conc: 795.63 ng/ml



#20 AR-1242-5

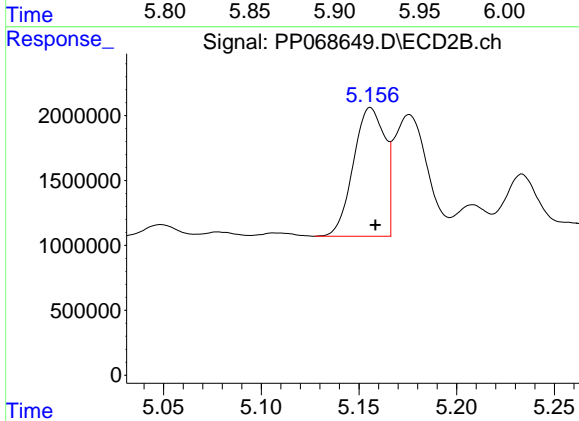
R.T.: 5.969 min
 Delta R.T.: -0.001 min
 Response: 25725554
 Conc: 937.13 ng/ml



#21 AR-1248-1

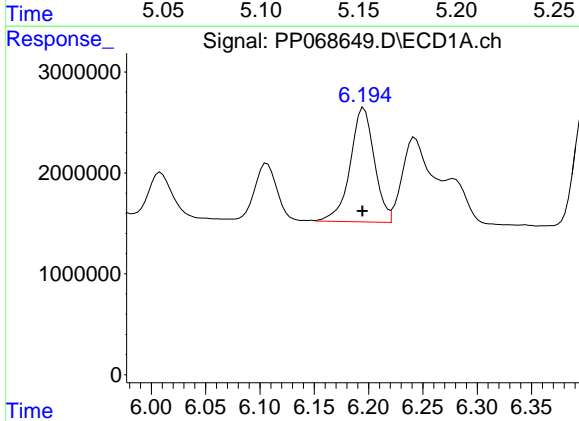
R.T.: 5.923 min
 Delta R.T.: 0.002 min
 Response: 11796819
 Conc: 522.81 ng/ml

Instrument :
 ECD_P
 ClientSampleId :



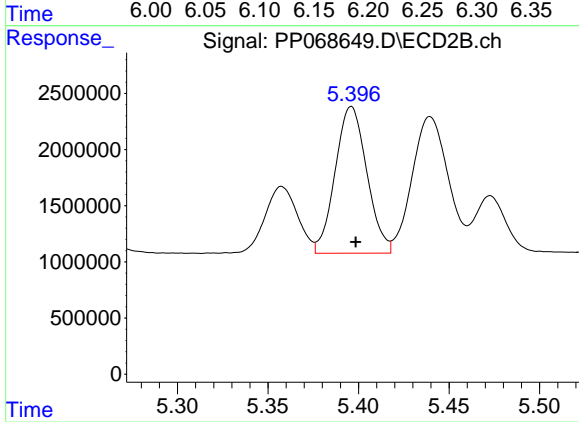
#21 AR-1248-1

R.T.: 5.156 min
 Delta R.T.: -0.002 min
 Response: 11102448
 Conc: 508.18 ng/ml



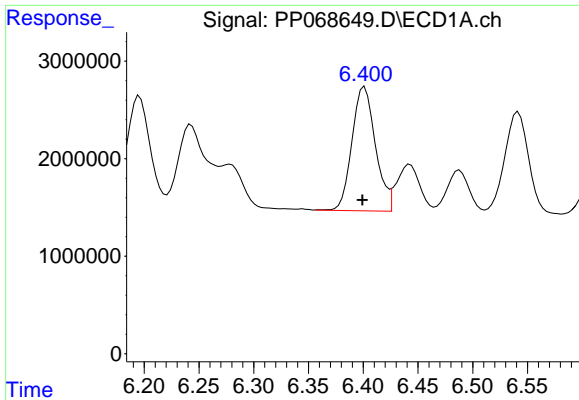
#22 AR-1248-2

R.T.: 6.196 min
 Delta R.T.: 0.001 min
 Response: 17474609
 Conc: 519.91 ng/ml



#22 AR-1248-2

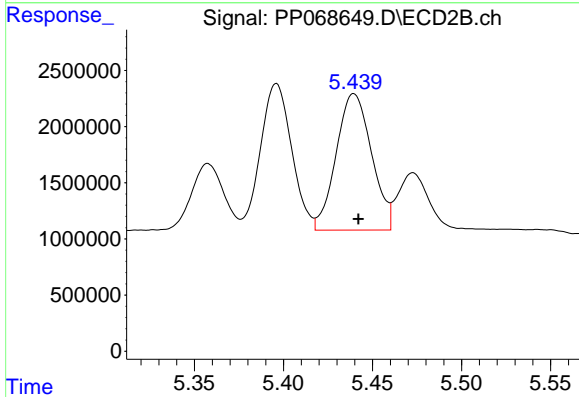
R.T.: 5.396 min
 Delta R.T.: -0.002 min
 Response: 15920662
 Conc: 498.00 ng/ml



#23 AR-1248-3

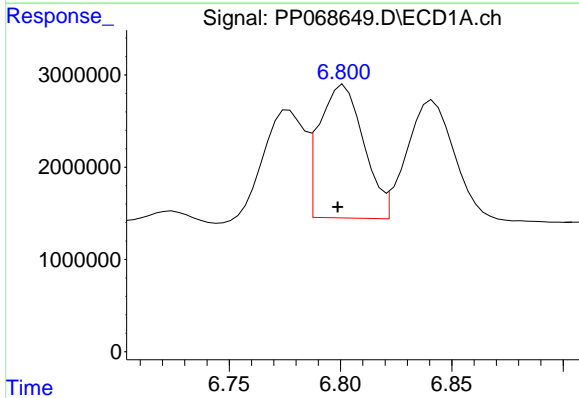
R.T.: 6.401 min
 Delta R.T.: 0.002 min
 Response: 18978343
 Conc: 519.73 ng/ml

Instrument :
 ECD_P
 ClientSampleId :



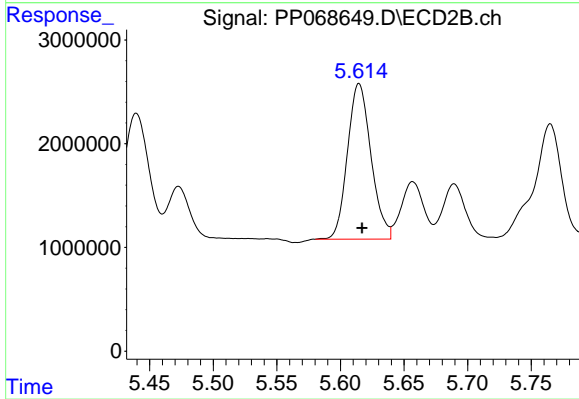
#23 AR-1248-3

R.T.: 5.440 min
 Delta R.T.: -0.003 min
 Response: 16810462
 Conc: 501.68 ng/ml



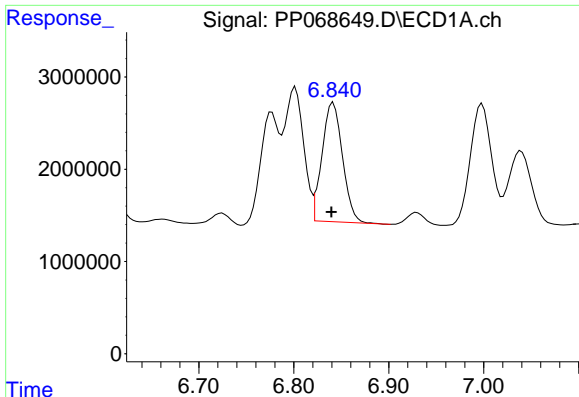
#24 AR-1248-4

R.T.: 6.802 min
 Delta R.T.: 0.003 min
 Response: 20132326
 Conc: 470.54 ng/ml



#24 AR-1248-4

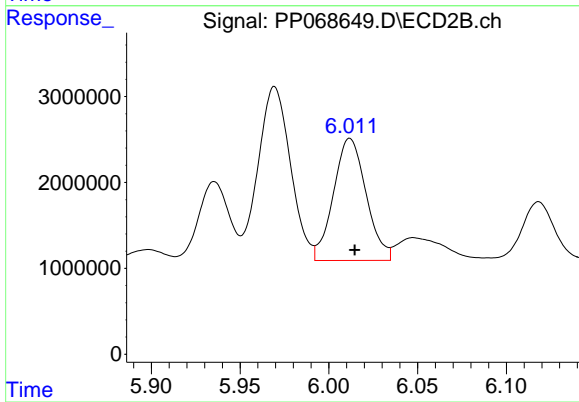
R.T.: 5.615 min
 Delta R.T.: -0.002 min
 Response: 19306488
 Conc: 497.22 ng/ml



#25 AR-1248-5

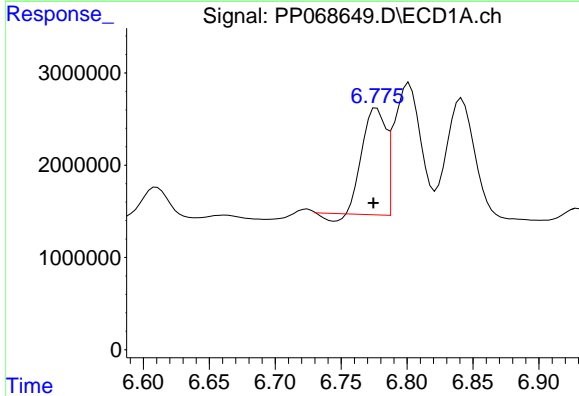
R.T.: 6.841 min
Delta R.T.: 0.002 min
Response: 19318174
Conc: 465.06 ng/ml

Instrument :
ECD_P
ClientSampleId :



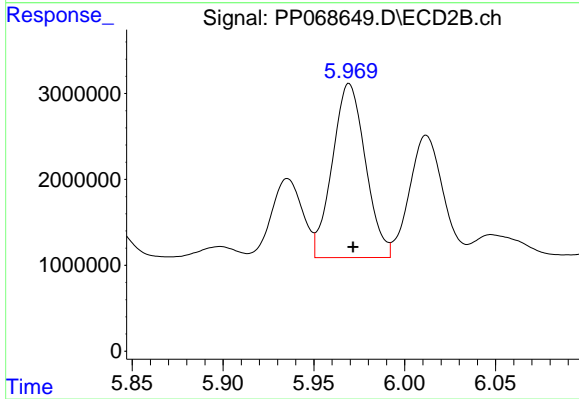
#25 AR-1248-5

R.T.: 6.012 min
Delta R.T.: -0.003 min
Response: 18240402
Conc: 492.08 ng/ml



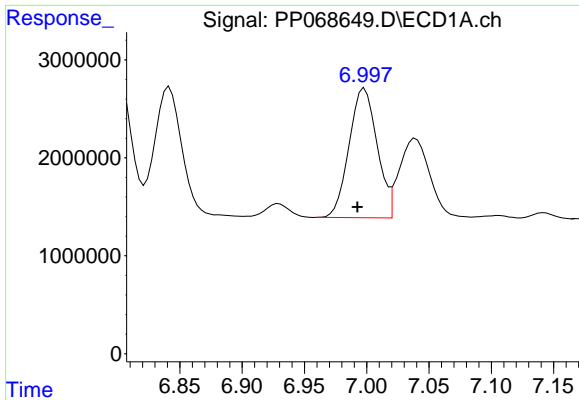
#26 AR-1254-1

R.T.: 6.777 min
Delta R.T.: 0.002 min
Response: 13967287
Conc: 269.19 ng/ml



#26 AR-1254-1

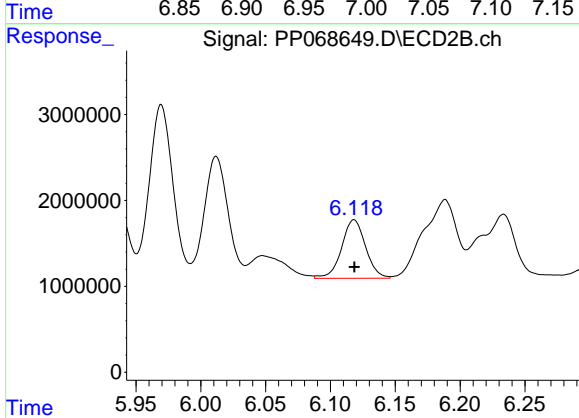
R.T.: 5.969 min
Delta R.T.: -0.002 min
Response: 25725554
Conc: 424.22 ng/ml



#27 AR-1254-2

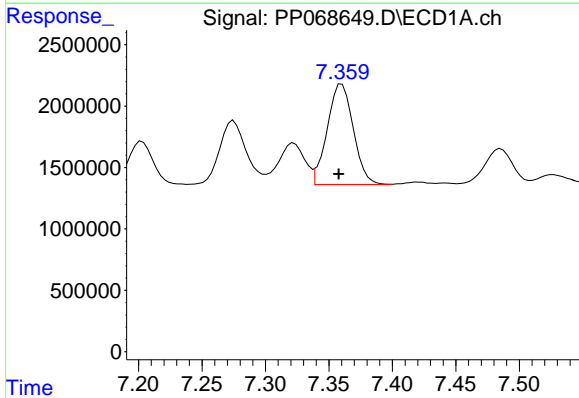
R.T.: 6.998 min
Delta R.T.: 0.006 min
Response: 20716346
Conc: 303.59 ng/ml

Instrument :
ECD_P
ClientSampleId :



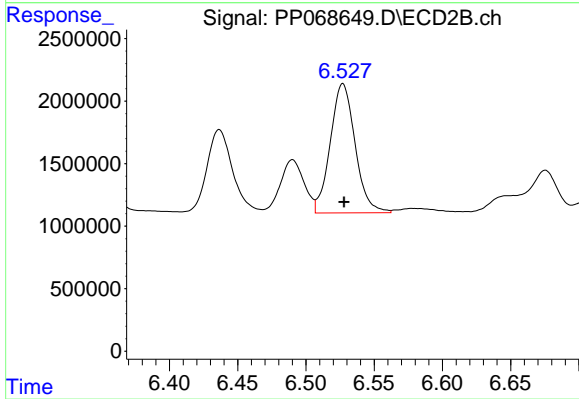
#27 AR-1254-2

R.T.: 6.118 min
Delta R.T.: 0.000 min
Response: 8763846
Conc: 166.19 ng/ml



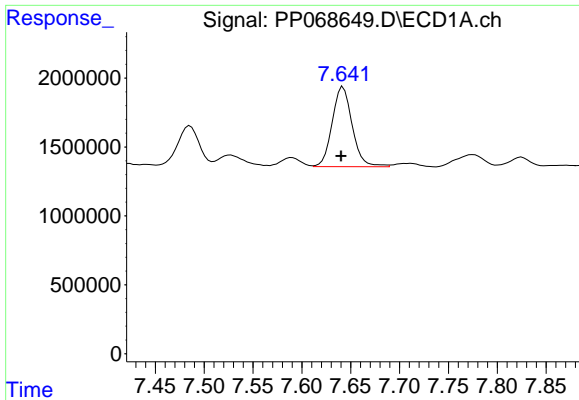
#28 AR-1254-3

R.T.: 7.360 min
Delta R.T.: 0.003 min
Response: 11720451
Conc: 164.02 ng/ml



#28 AR-1254-3

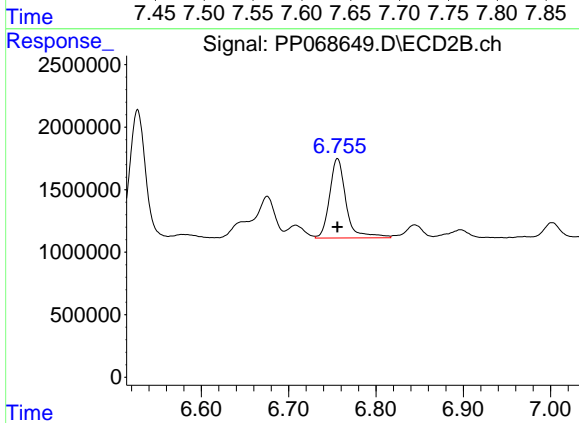
R.T.: 6.527 min
Delta R.T.: 0.000 min
Response: 13097142
Conc: 157.30 ng/ml



#29 AR-1254-4

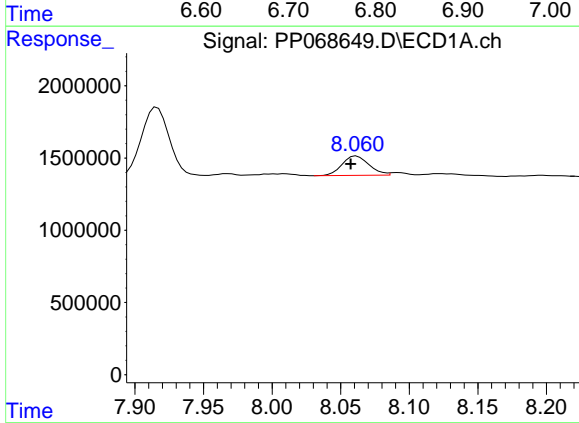
R.T.: 7.642 min
 Delta R.T.: 0.002 min
 Response: 8271166
 Conc: 153.70 ng/ml

Instrument :
 ECD_P
 ClientSampleId :



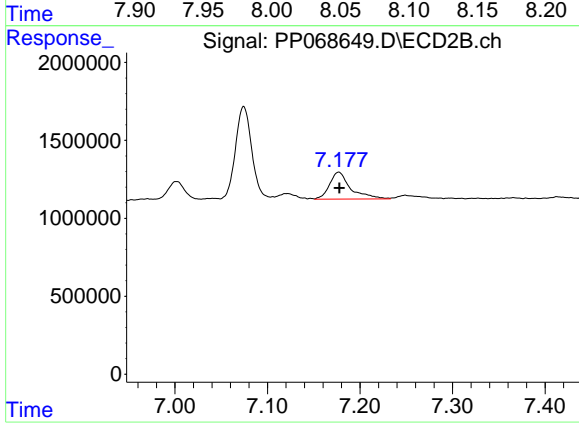
#29 AR-1254-4

R.T.: 6.756 min
 Delta R.T.: 0.000 min
 Response: 8322546
 Conc: 171.15 ng/ml



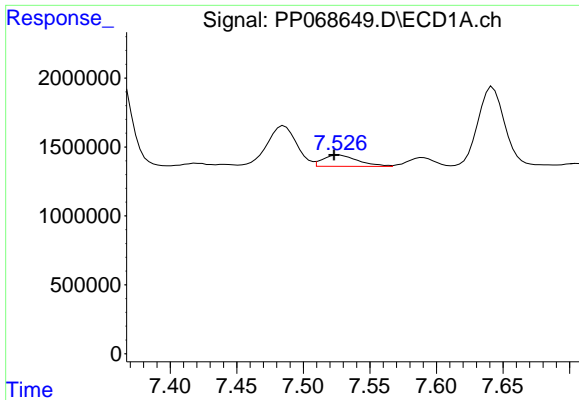
#30 AR-1254-5

R.T.: 8.062 min
 Delta R.T.: 0.004 min
 Response: 1837701
 Conc: 29.32 ng/ml



#30 AR-1254-5

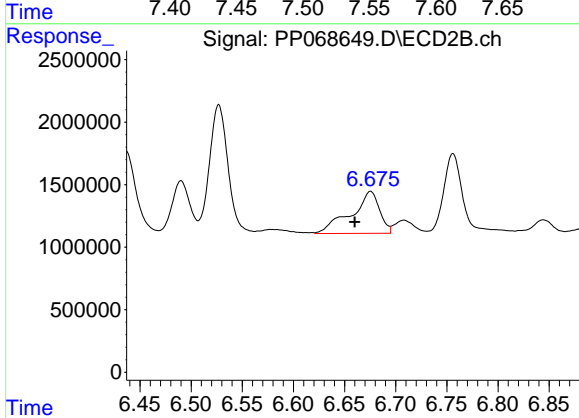
R.T.: 7.177 min
 Delta R.T.: 0.000 min
 Response: 2766362
 Conc: 37.07 ng/ml



#31 AR-1260-1

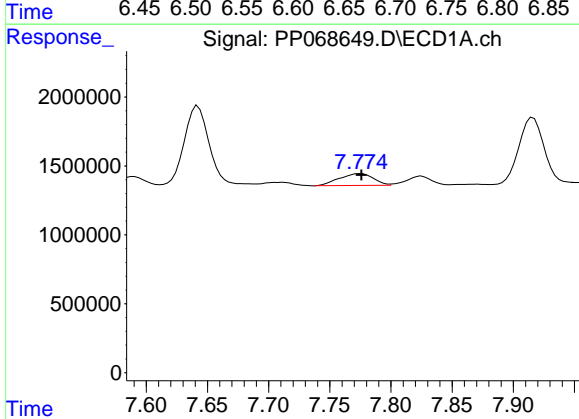
R.T.: 7.527 min
 Delta R.T.: 0.004 min
 Response: 1516448
 Conc: 28.03 ng/ml

Instrument :
 ECD_P
 ClientSampleId :



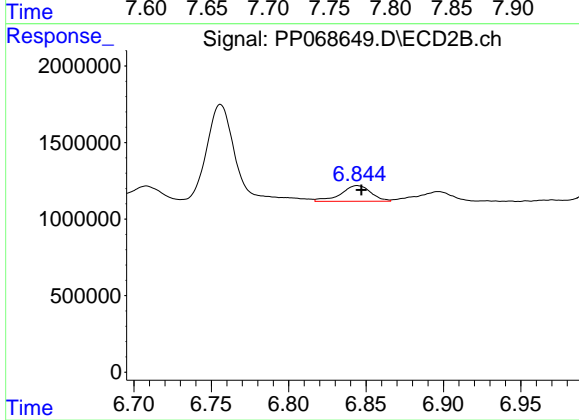
#31 AR-1260-1

R.T.: 6.675 min
 Delta R.T.: 0.016 min
 Response: 6526368
 Conc: 117.28 ng/ml



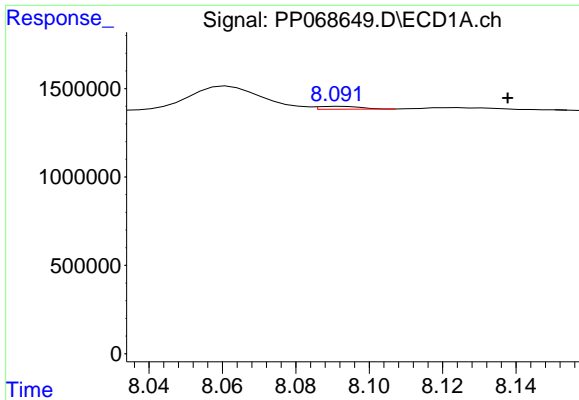
#32 AR-1260-2

R.T.: 7.775 min
 Delta R.T.: 0.000 min
 Response: 1677472
 Conc: 26.37 ng/ml



#32 AR-1260-2

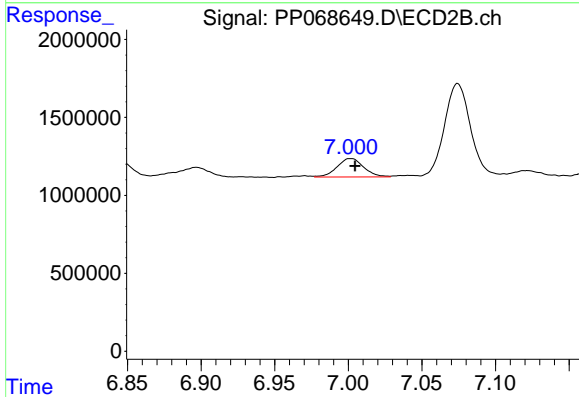
R.T.: 6.844 min
 Delta R.T.: -0.003 min
 Response: 1395581
 Conc: 21.07 ng/ml



#33 AR-1260-3

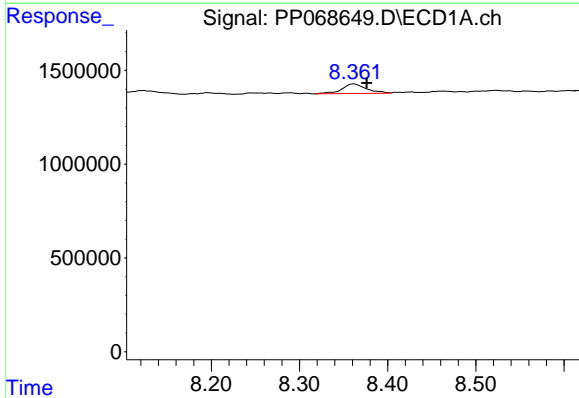
R.T.: 8.092 min
 Delta R.T.: -0.046 min
 Response: 133672
 Conc: 2.48 ng/ml

Instrument :
 ECD_P
 ClientSampleId :



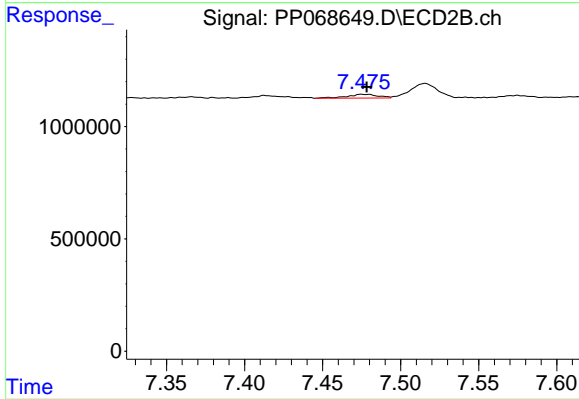
#33 AR-1260-3

R.T.: 7.002 min
 Delta R.T.: -0.003 min
 Response: 1494087
 Conc: 24.14 ng/ml



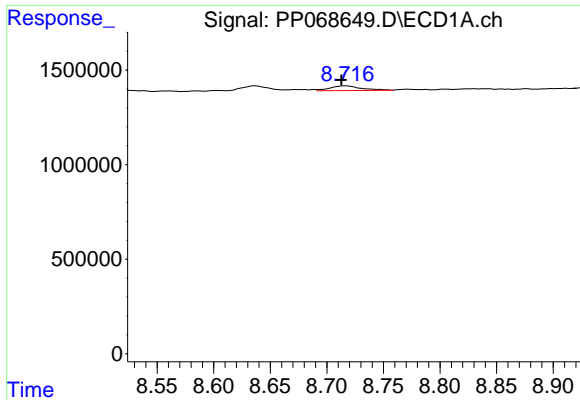
#34 AR-1260-4

R.T.: 8.362 min
 Delta R.T.: -0.014 min
 Response: 984897
 Conc: 15.83 ng/ml



#34 AR-1260-4

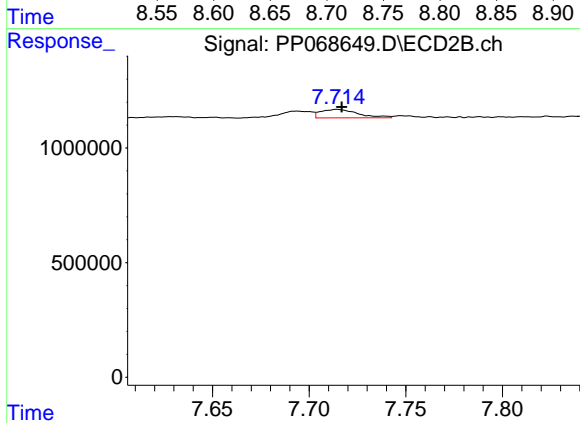
R.T.: 7.475 min
 Delta R.T.: -0.003 min
 Response: 233963
 Conc: 4.44 ng/ml



#35 AR-1260-5

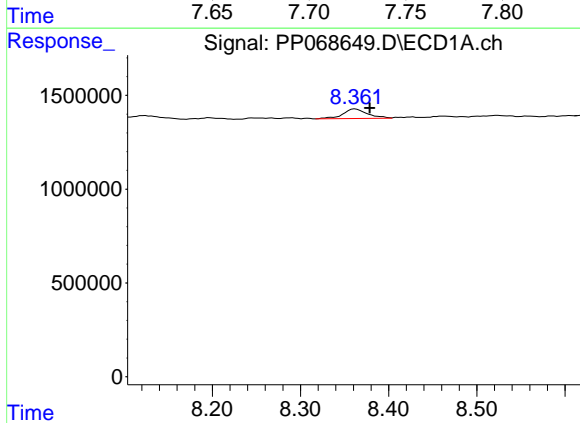
R.T.: 8.717 min
 Delta R.T.: 0.004 min
 Response: 472946
 Conc: 4.18 ng/ml

Instrument :
 ECD_P
 ClientSampleId :



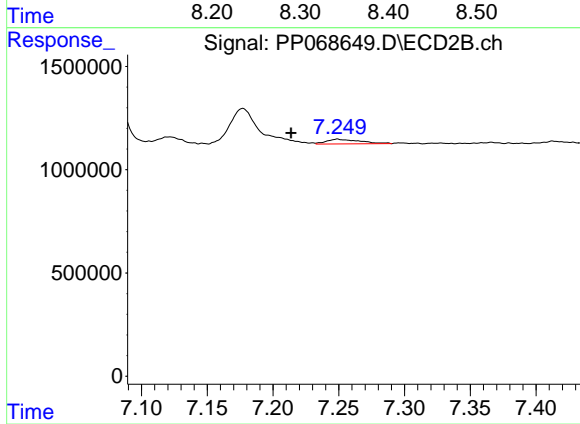
#35 AR-1260-5

R.T.: 7.715 min
 Delta R.T.: -0.002 min
 Response: 495979
 Conc: 4.17 ng/ml



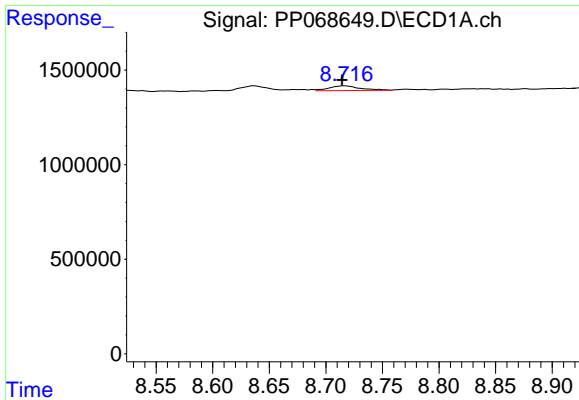
#36 AR-1262-1

R.T.: 8.362 min
 Delta R.T.: -0.017 min
 Response: 984897
 Conc: 13.29 ng/ml



#36 AR-1262-1

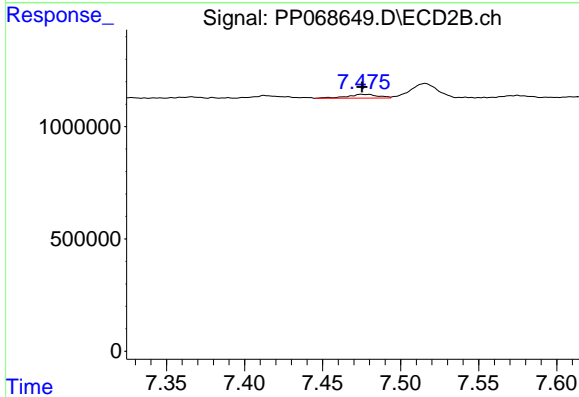
R.T.: 7.249 min
 Delta R.T.: 0.035 min
 Response: 402816
 Conc: 5.19 ng/ml



#37 AR-1262-2

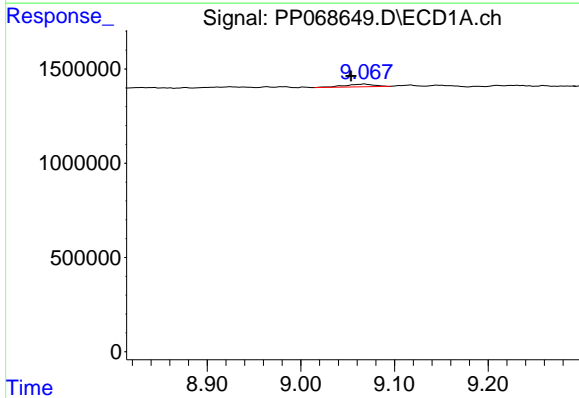
R.T.: 8.717 min
 Delta R.T.: 0.003 min
 Response: 472946
 Conc: 3.67 ng/ml

Instrument :
 ECD_P
 ClientSampleId :



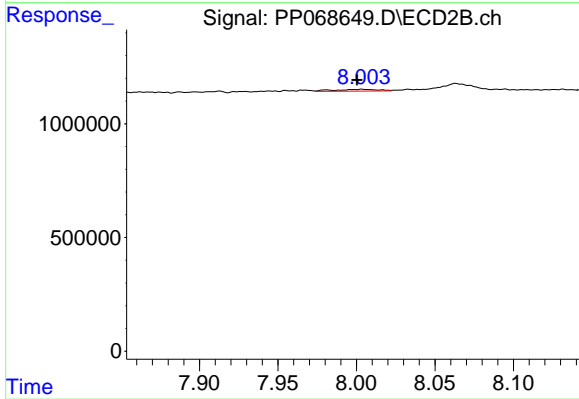
#37 AR-1262-2

R.T.: 7.475 min
 Delta R.T.: 0.000 min
 Response: 233963
 Conc: 3.31 ng/ml



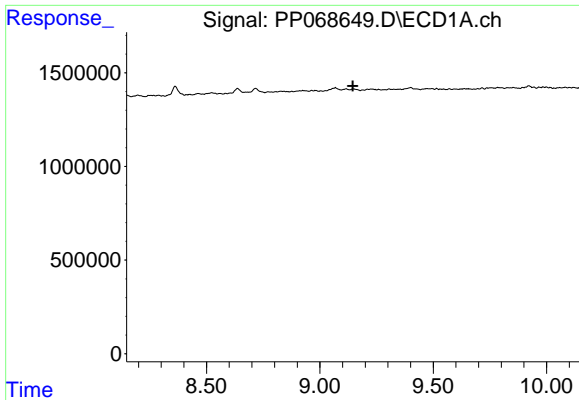
#38 AR-1262-3

R.T.: 9.068 min
 Delta R.T.: 0.015 min
 Response: 306753
 Conc: 3.21 ng/ml



#38 AR-1262-3

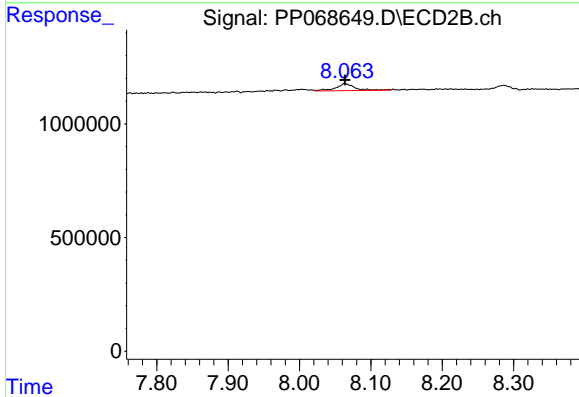
R.T.: 8.004 min
 Delta R.T.: 0.003 min
 Response: 150729
 Conc: 2.56 ng/ml



#39 AR-1262-4

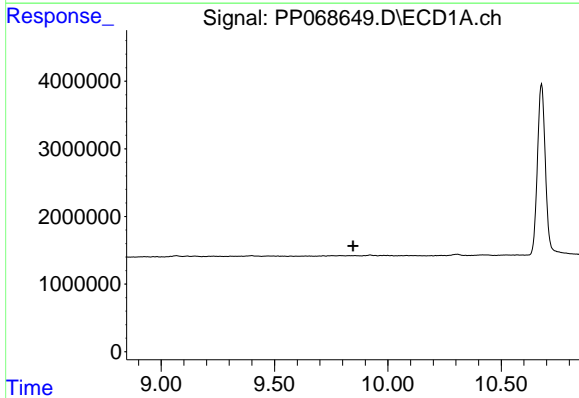
R.T.: 0.000 min
 Exp R.T.: 9.146 min
 Response: 0
 Conc: N.D.

Instrument :
 ECD_P
 ClientSampleId :



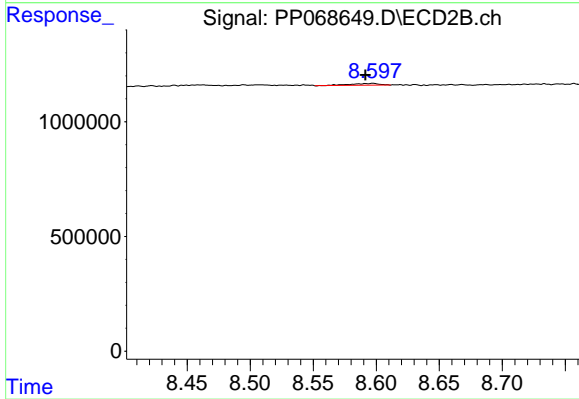
#39 AR-1262-4

R.T.: 8.063 min
 Delta R.T.: 0.000 min
 Response: 565050
 Conc: 5.45 ng/ml



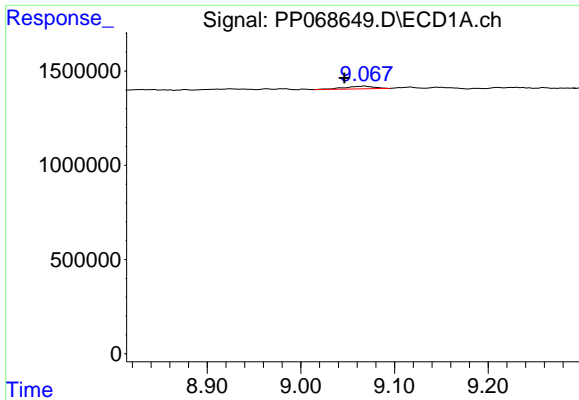
#40 AR-1262-5

R.T.: 0.000 min
 Exp R.T.: 9.847 min
 Response: 0
 Conc: N.D.



#40 AR-1262-5

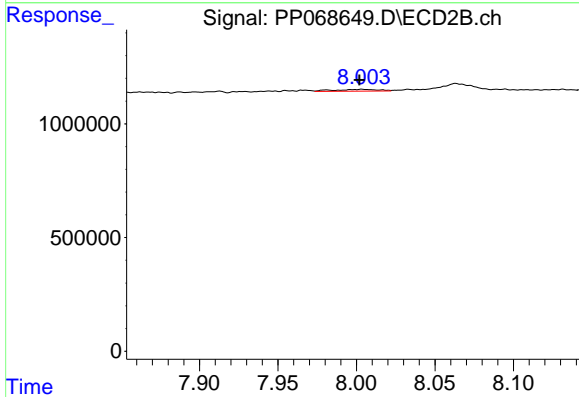
R.T.: 8.598 min
 Delta R.T.: 0.006 min
 Response: 126288
 Conc: 2.49 ng/ml



#41 AR-1268-1

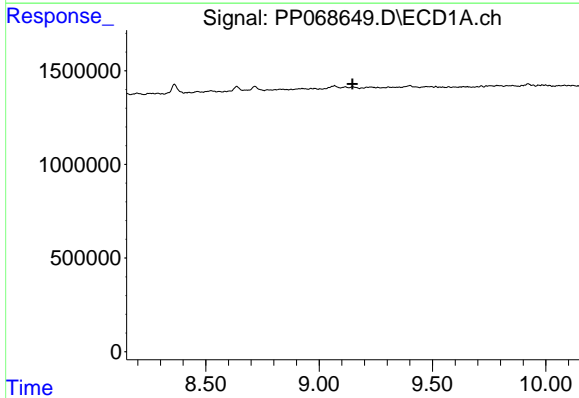
R.T.: 9.068 min
 Delta R.T.: 0.022 min
 Response: 306753
 Conc: 1.99 ng/ml

Instrument :
 ECD_P
 ClientSampleId :



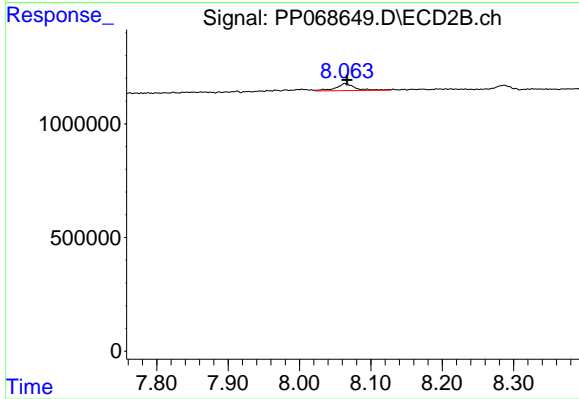
#41 AR-1268-1

R.T.: 8.004 min
 Delta R.T.: 0.002 min
 Response: 150729
 Conc: 0.97 ng/ml



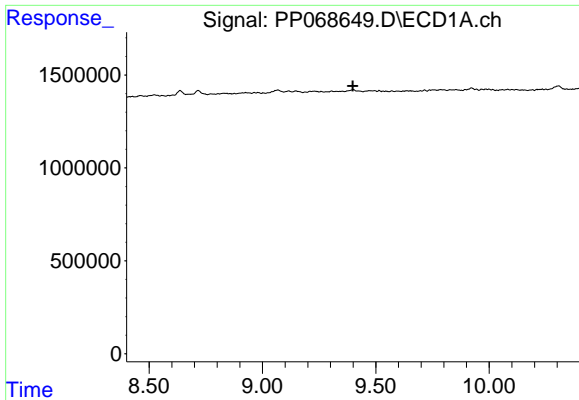
#42 AR-1268-2

R.T.: 0.000 min
 Exp R.T. : 9.147 min
 Response: 0
 Conc: N.D.



#42 AR-1268-2

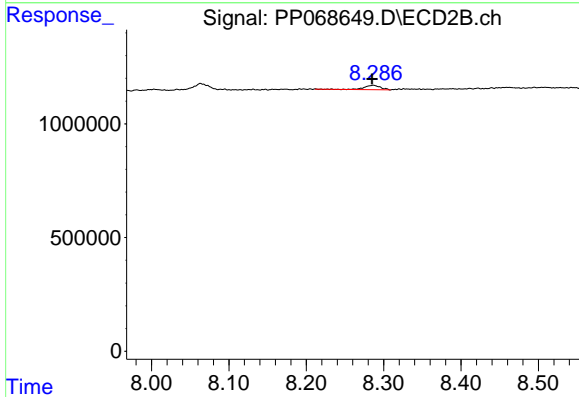
R.T.: 8.063 min
 Delta R.T.: -0.003 min
 Response: 565050
 Conc: 3.99 ng/ml



#43 AR-1268-3

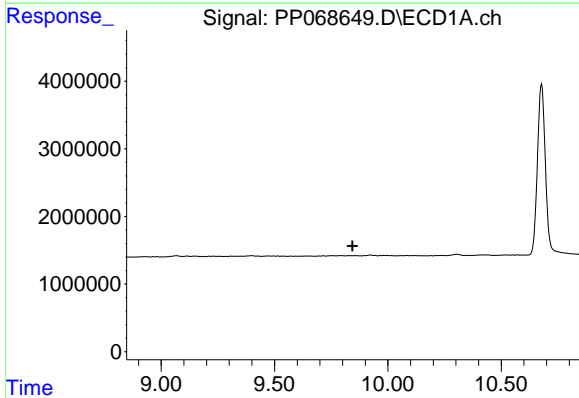
R.T.: 0.000 min
 Exp R.T.: 9.398 min
 Response: 0
 Conc: N.D.

Instrument :
 ECD_P
 ClientSampleId :



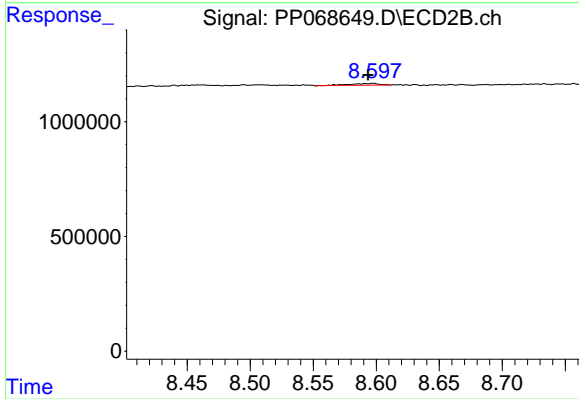
#43 AR-1268-3

R.T.: 8.287 min
 Delta R.T.: 0.002 min
 Response: 273185
 Conc: 2.19 ng/ml



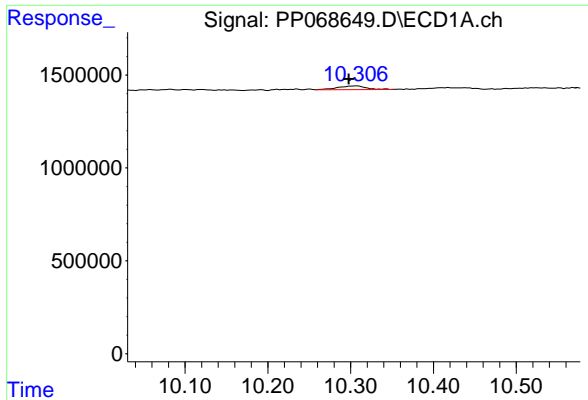
#44 AR-1268-4

R.T.: 0.000 min
 Exp R.T.: 9.844 min
 Response: 0
 Conc: N.D.



#44 AR-1268-4

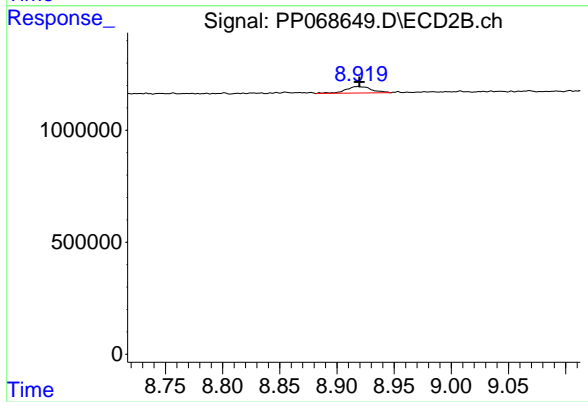
R.T.: 8.598 min
 Delta R.T.: 0.004 min
 Response: 126288
 Conc: 2.31 ng/ml



#45 AR-1268-5

R.T.: 10.308 min
 Delta R.T.: 0.010 min
 Response: 466397
 Conc: 1.17 ng/ml

Instrument :
 ECD_P
 ClientSampleId :



#45 AR-1268-5

R.T.: 8.919 min
 Delta R.T.: 0.000 min
 Response: 446020
 Conc: 1.18 ng/ml