

Data Path : Z:\pestpcbsrv\HPCHEM1\ECD_P\Data\PP112118\
 Data File : PP028140.D
 Signal(s) : Signal #1: ECD1A.CH Signal #2: ECD2B.CH
 Acq On : 21 Nov 2018 19:28
 Operator : EI\MA
 Sample : J5765-04MSD
 Misc :
 ALS Vial : 10 Sample Multiplier: 1

Instrument :
 ECD_P
 ClientSampleId :

Integration File signal 1: autoint1.e
 Integration File signal 2: autoint2.e
 Quant Time: Nov 22 03:31:29 2018
 Quant Method : Z:\pestpcbsrv\HPCHEM1\ECD_P\methods\PP110918.M
 Quant Title : 8080.M
 QLast Update : Fri Nov 09 17:06:51 2018
 Response via : Initial Calibration
 Integrator: ChemStation 6890 Scale Mode: Large solvent peaks clipped

Volume Inj. : 2 µl
 Signal #1 Phase : ZB-CLPesticides-1 Signal #2 Phase: ZB-CLPesticides-2
 Signal #1 Info : 30M x 0.32mm x0.5 Signal #2 Info : 30M x 0.32mm x 0.25µm

	Compound	RT#1	RT#2	Resp#1	Resp#2	ng/ml	ng/ml

System Monitoring Compounds							
4) S	2,4-DCAA	12.093	12.206	126.2E6	175.4E6	484.888	413.328
Target Compounds							
1) T	Dalapon	3.338	3.009	337.1E6	309.3E6	537.031	528.972
2) T	3,5-DICHL...	10.505	10.296	303.1E6	243.8E6	565.383	471.201
5) T	DICAMBA	12.414	12.516	729.4E6	666.8E6	440.810	397.056
6) T	MCPD	12.771	12.707	6732624	45284193	17.732	54.549 #
7) T	MCPA	12.998	13.094	31589806	48010542	44.765	37.140
8) T	DICHLORPROP	13.611	13.631	257.2E6	231.2E6	601.176	561.205
9) T	2,4-D	13.961	14.116	216.5E6	289.3E6	563.809	598.327
10) T	Pentachlo...	14.382	14.730	4002.9E6	3251.8E6	477.956	504.423
11) T	2,4,5-TP ...	15.243	15.299	1528.8E6	1379.6E6	507.771	561.991
12) T	2,4,5-T	15.632	15.939	1324.2E6	1065.7E6	477.452	490.368
13) T	2,4-DB	16.395	16.540	152.5E6	149.4E6	672.234	569.758
14) T	DINOSEB	17.885	16.934	874.3E6	751.9E6	385.218	418.283
15) T	Picloram	17.647	18.312	2010.6E6	1689.5E6	419.004	461.398
16) T	DCPA	18.249	18.195	1523.4E6	1252.2E6	336.924	389.575

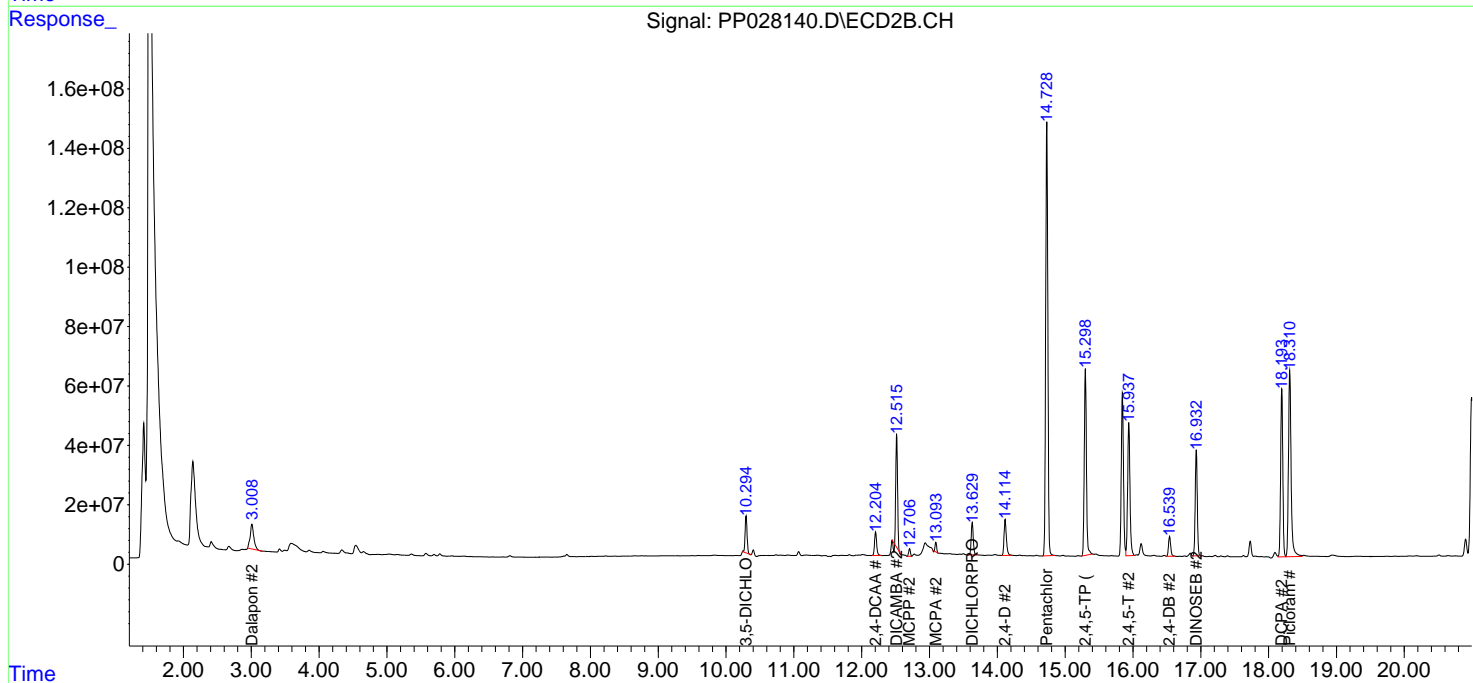
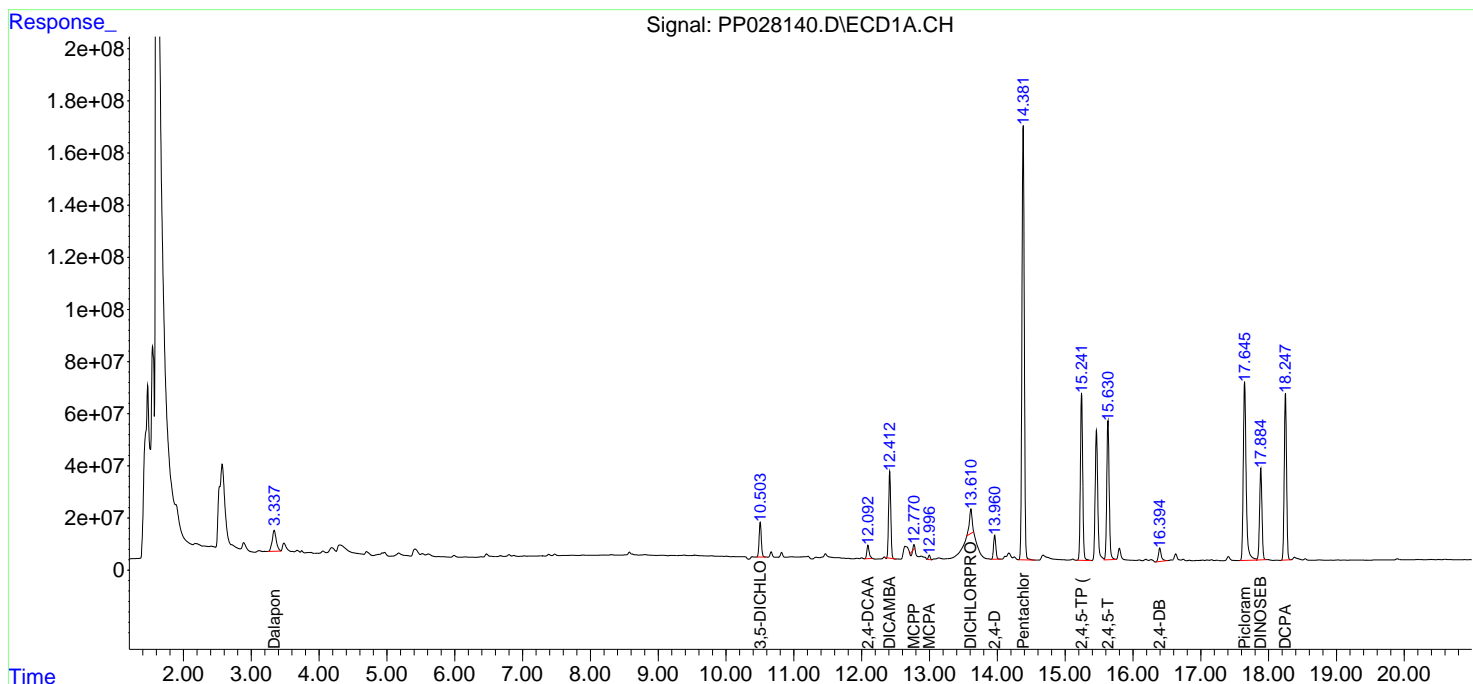
(f)=RT Delta > 1/2 Window (#)=Amounts differ by > 25% (m)=manual int.

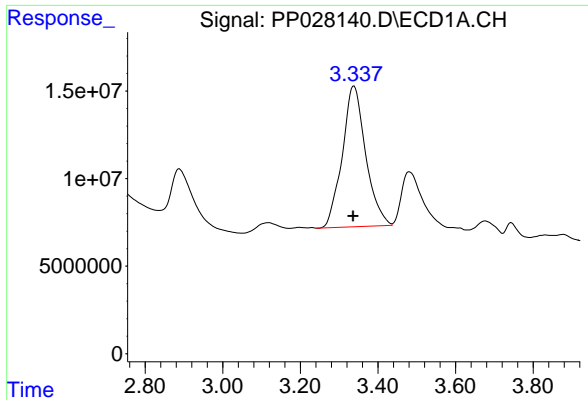
Data Path : Z:\pestpcbsrv\HPCHEM1\ECD_P\Data\PP112118\
 Data File : PP028140.D
 Signal(s) : Signal #1: ECD1A.CH Signal #2: ECD2B.CH
 Acq On : 21 Nov 2018 19:28
 Operator : EI\MA
 Sample : J5765-04MSD
 Misc :
 ALS Vial : 10 Sample Multiplier: 1

Instrument :
 ECD_P
 ClientSampled :

Integration File signal 1: autoint1.e
 Integration File signal 2: autoint2.e
 Quant Time: Nov 22 03:31:29 2018
 Quant Method : Z:\pestpcbsrv\HPCHEM1\ECD_P\methods\PP110918.M
 Quant Title : 8080.M
 QLast Update : Fri Nov 09 17:06:51 2018
 Response via : Initial Calibration
 Integrator: ChemStation 6890 Scale Mode: Large solvent peaks clipped

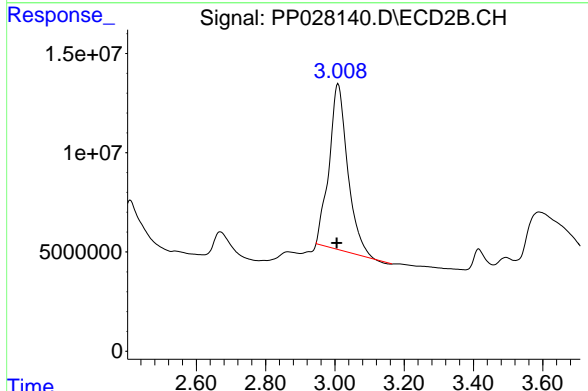
Volume Inj. : 2 µl
 Signal #1 Phase : ZB-CLPesticides-1 Signal #2 Phase: ZB-CLPesticides-2
 Signal #1 Info : 30M x 0.32mm x0.5 Signal #2 Info : 30M x 0.32mm x 0.25µm



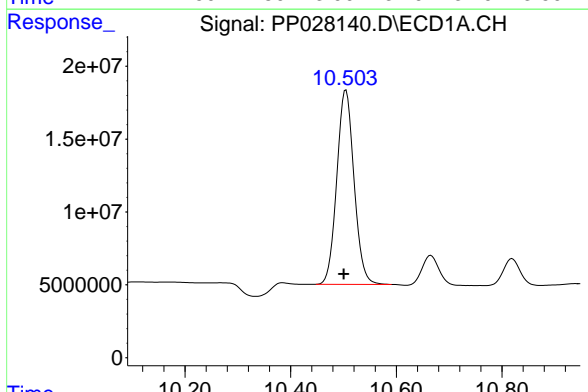


#1 Dalapon
 R.T.: 3.338 min
 Delta R.T.: 0.002 min
 Response: 337085126
 Conc: 537.03 ng/ml

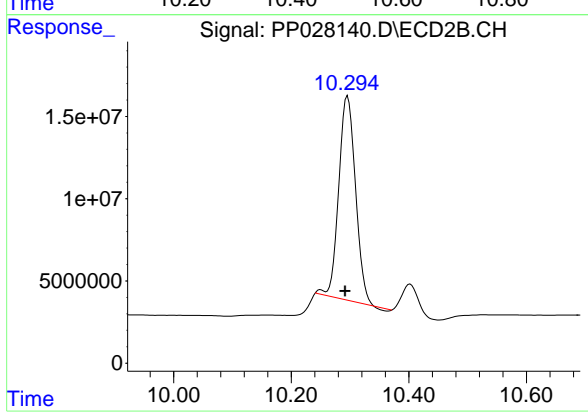
Instrument :
 ECD_P
 ClientSampled :



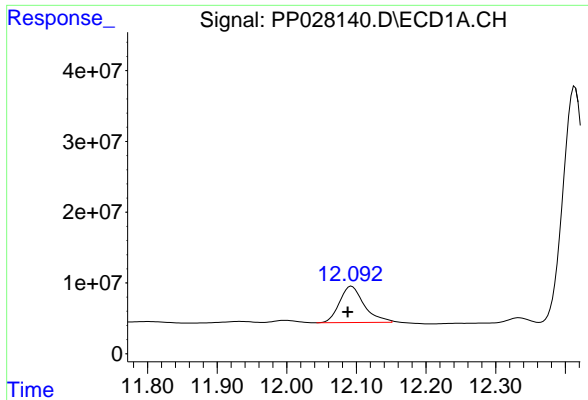
#1 Dalapon
 R.T.: 3.009 min
 Delta R.T.: 0.004 min
 Response: 309286067
 Conc: 528.97 ng/ml



#2 3,5-DICHLOROBENZOIC ACID
 R.T.: 10.505 min
 Delta R.T.: 0.004 min
 Response: 303129965
 Conc: 565.38 ng/ml

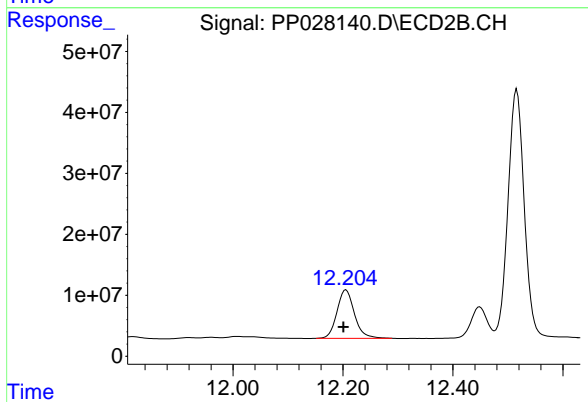


#2 3,5-DICHLOROBENZOIC ACID
 R.T.: 10.296 min
 Delta R.T.: 0.004 min
 Response: 243791009
 Conc: 471.20 ng/ml

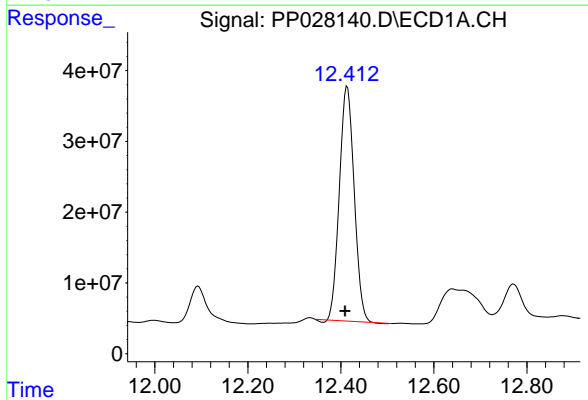


#4 2,4-DCAA
R.T.: 12.093 min
Delta R.T.: 0.005 min
Response: 126220035
Conc: 484.89 ng/ml

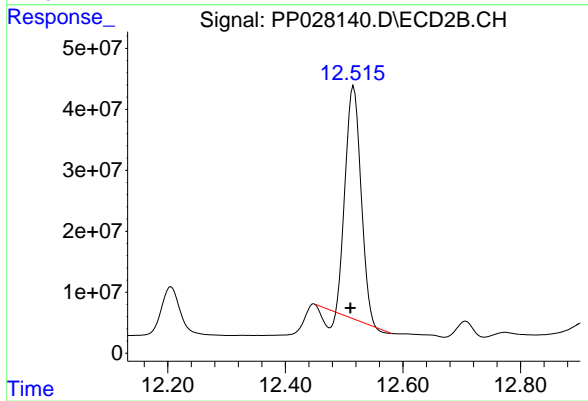
Instrument :
ECD_P
ClientSampleId :



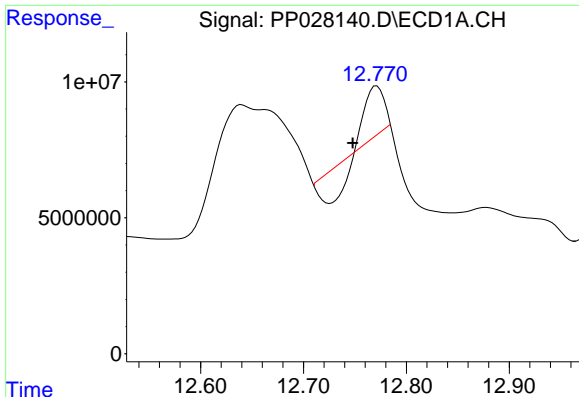
#4 2,4-DCAA
R.T.: 12.206 min
Delta R.T.: 0.005 min
Response: 175427697
Conc: 413.33 ng/ml



#5 DICAMBA
R.T.: 12.414 min
Delta R.T.: 0.005 min
Response: 729359299
Conc: 440.81 ng/ml



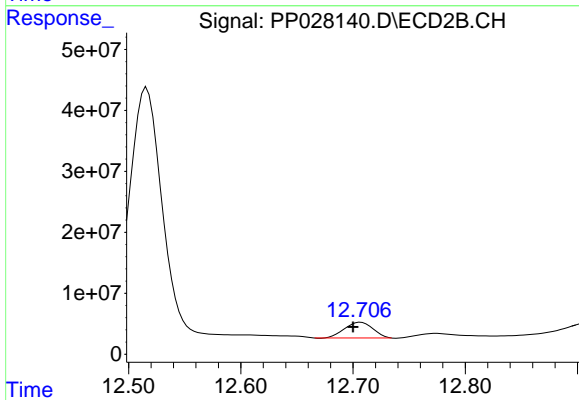
#5 DICAMBA
R.T.: 12.516 min
Delta R.T.: 0.005 min
Response: 666792026
Conc: 397.06 ng/ml



#6 MCPP

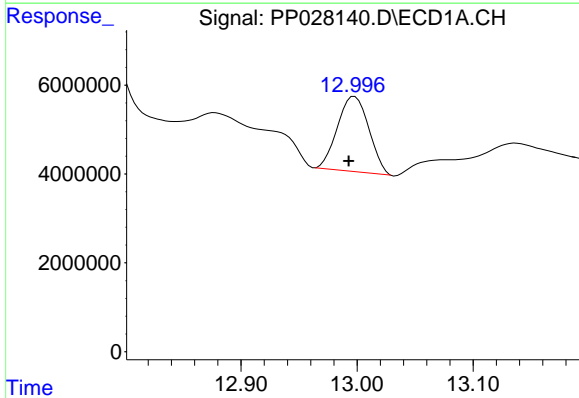
R.T.: 12.771 min
 Delta R.T.: 0.023 min
 Response: 6732624
 Conc: 17.73 ug/ml

Instrument :
 ECD_P
 ClientSampled :



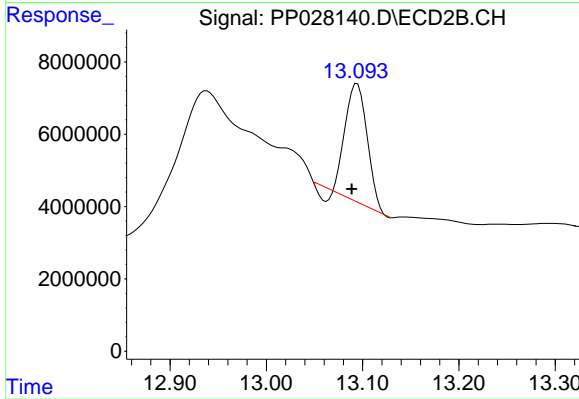
#6 MCPP

R.T.: 12.707 min
 Delta R.T.: 0.007 min
 Response: 45284193
 Conc: 54.55 ug/ml



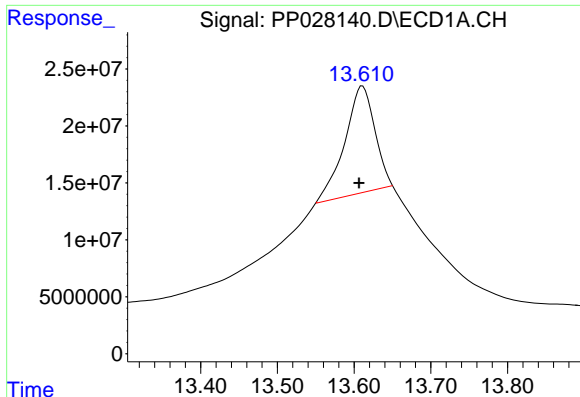
#7 MCPA

R.T.: 12.998 min
 Delta R.T.: 0.005 min
 Response: 31589806
 Conc: 44.77 ug/ml



#7 MCPA

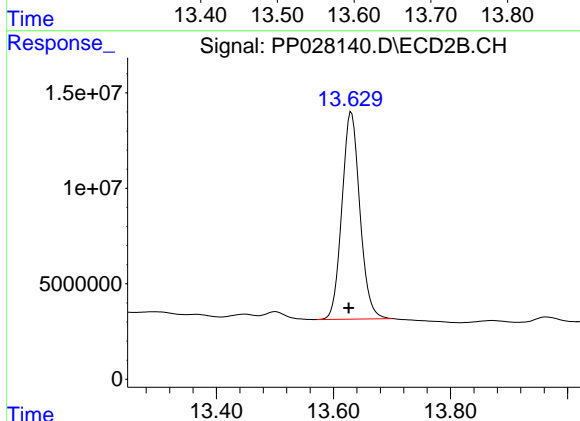
R.T.: 13.094 min
 Delta R.T.: 0.005 min
 Response: 48010542
 Conc: 37.14 ug/ml



#8 DICHLORPROP

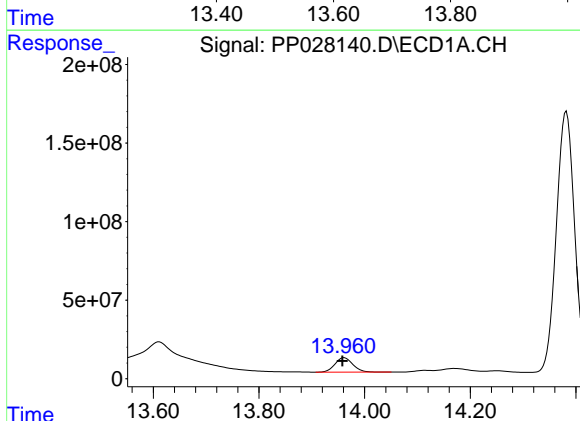
R.T.: 13.611 min
 Delta R.T.: 0.004 min
 Response: 257237637
 Conc: 601.18 ng/ml

Instrument :
 ECD_P
 ClientSampled :



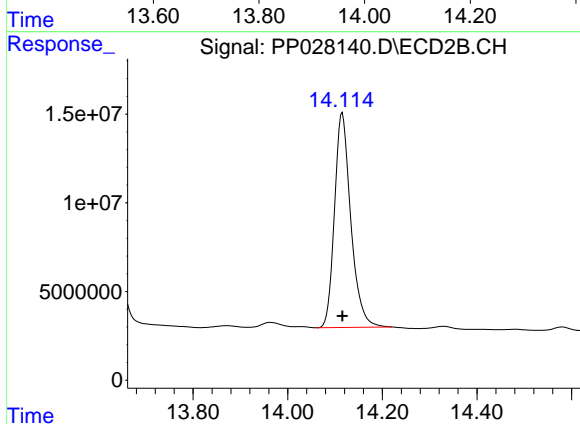
#8 DICHLORPROP

R.T.: 13.631 min
 Delta R.T.: 0.005 min
 Response: 231167300
 Conc: 561.20 ng/ml



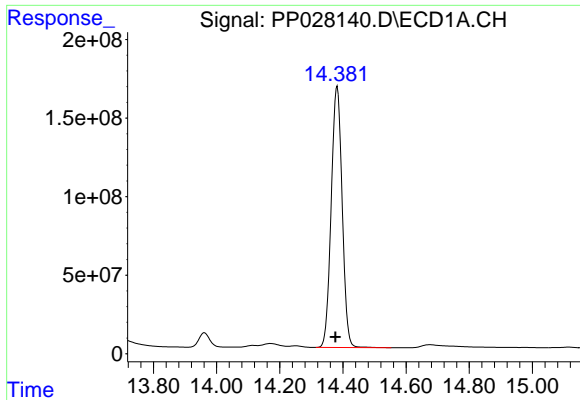
#9 2,4-D

R.T.: 13.961 min
 Delta R.T.: 0.003 min
 Response: 216487877
 Conc: 563.81 ng/ml



#9 2,4-D

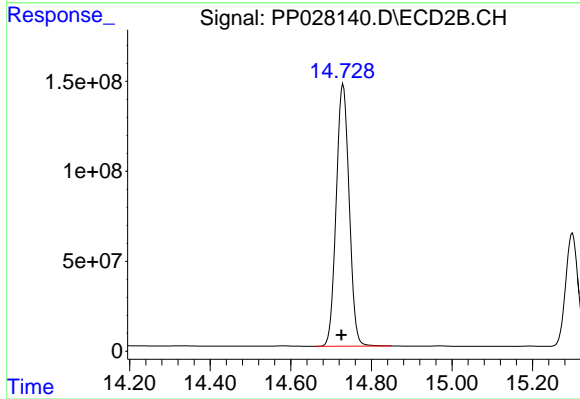
R.T.: 14.116 min
 Delta R.T.: 0.000 min
 Response: 289311364
 Conc: 598.33 ng/ml



#10 Pentachlorophenol

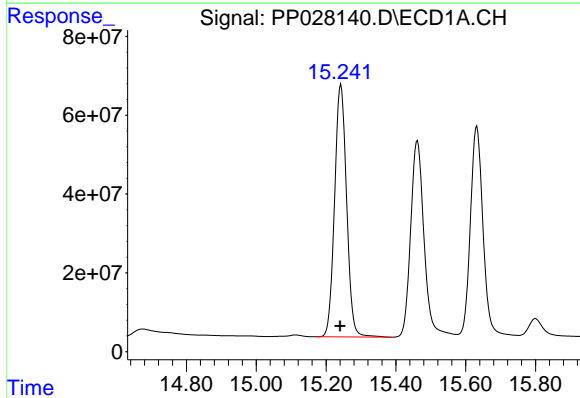
R.T.: 14.382 min
 Delta R.T.: 0.006 min
 Response: 4002945327
 Conc: 477.96 ng/ml

Instrument :
 ECD_P
 ClientSampled :



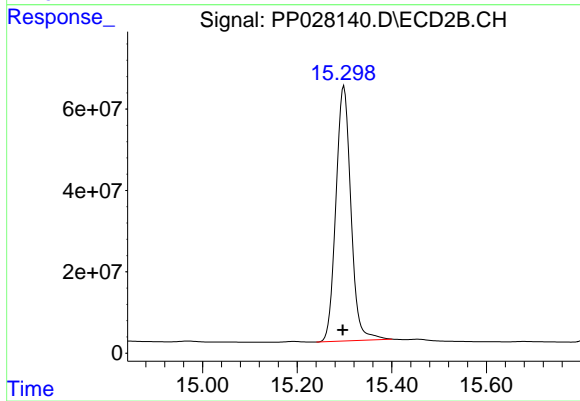
#10 Pentachlorophenol

R.T.: 14.730 min
 Delta R.T.: 0.004 min
 Response: 3251822575
 Conc: 504.42 ng/ml



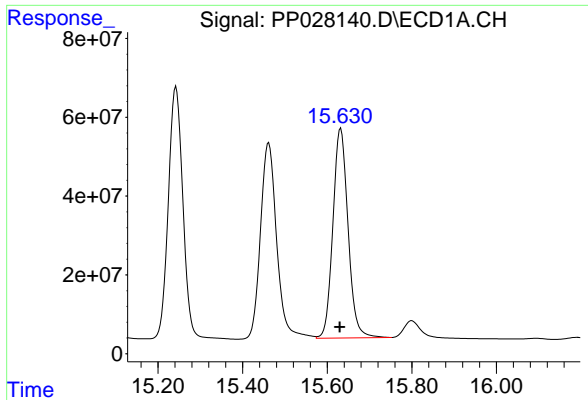
#11 2,4,5-TP (SILVEX)

R.T.: 15.243 min
 Delta R.T.: 0.002 min
 Response: 1528803196
 Conc: 507.77 ng/ml



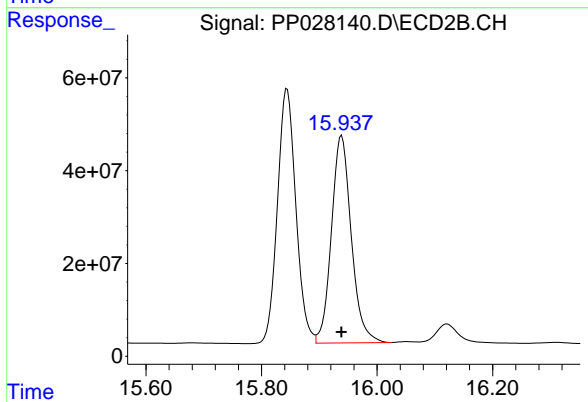
#11 2,4,5-TP (SILVEX)

R.T.: 15.299 min
 Delta R.T.: 0.002 min
 Response: 1379630764
 Conc: 561.99 ng/ml

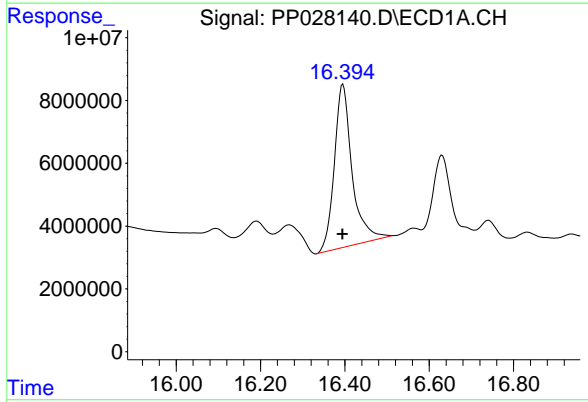


#12 2,4,5-T
 R.T.: 15.632 min
 Delta R.T.: 0.002 min
 Response: 1324169986
 Conc: 477.45 ng/ml

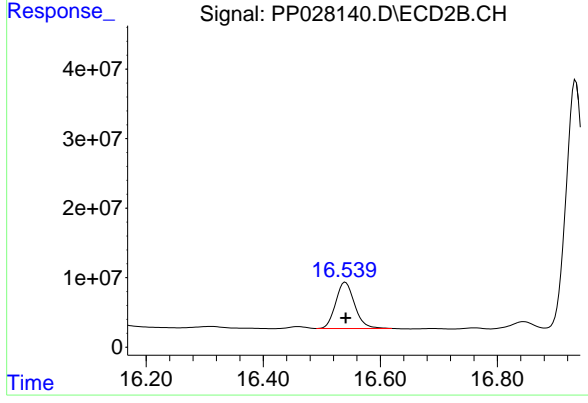
Instrument :
 ECD_P
 ClientSampled :



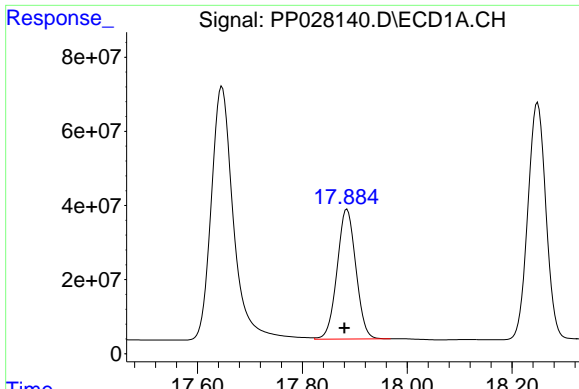
#12 2,4,5-T
 R.T.: 15.939 min
 Delta R.T.: 0.000 min
 Response: 1065707972
 Conc: 490.37 ng/ml



#13 2,4-DB
 R.T.: 16.395 min
 Delta R.T.: 0.001 min
 Response: 152524307
 Conc: 672.23 ng/ml

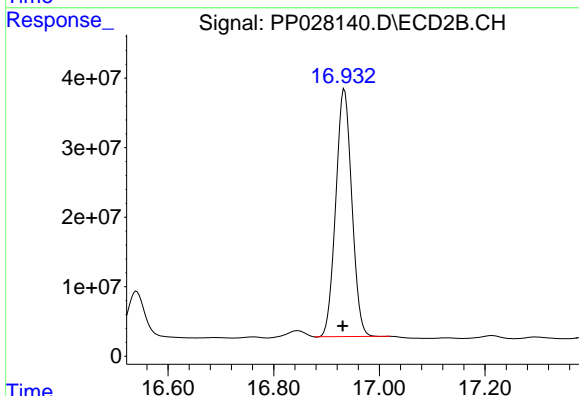


#13 2,4-DB
 R.T.: 16.540 min
 Delta R.T.: 0.000 min
 Response: 149384483
 Conc: 569.76 ng/ml

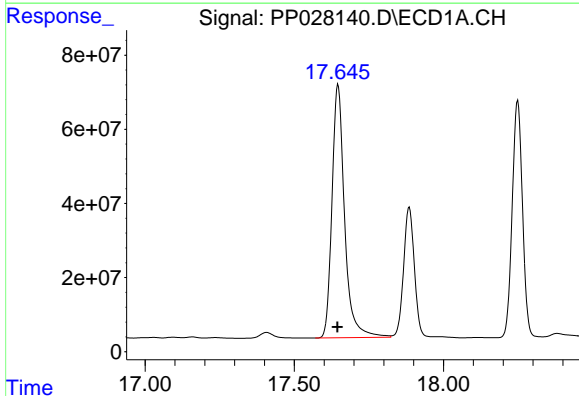


#14 DINOSEB
 R.T.: 17.885 min
 Delta R.T.: 0.005 min
 Response: 874258442
 Conc: 385.22 ng/ml

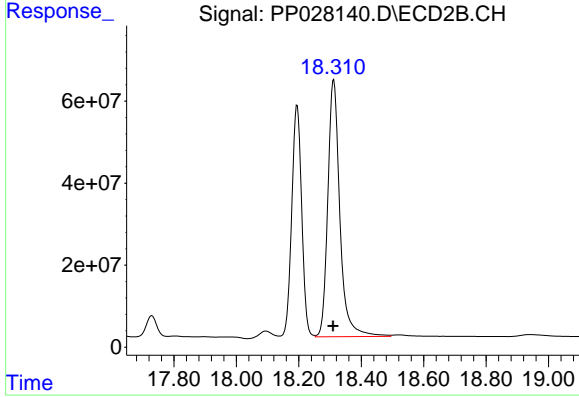
Instrument :
 ECD_P
 ClientSampled :



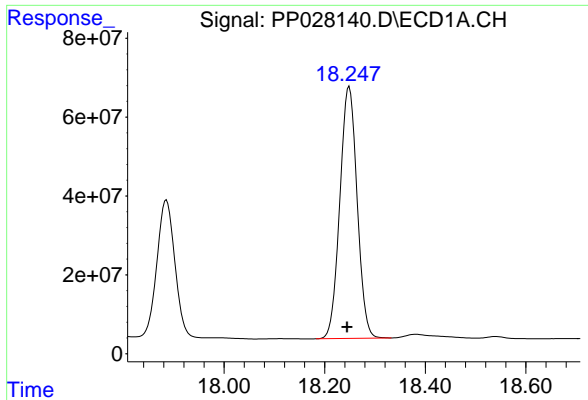
#14 DINOSEB
 R.T.: 16.934 min
 Delta R.T.: 0.003 min
 Response: 751949374
 Conc: 418.28 ng/ml



#15 Picloram
 R.T.: 17.647 min
 Delta R.T.: 0.002 min
 Response: 2010649532
 Conc: 419.00 ng/ml



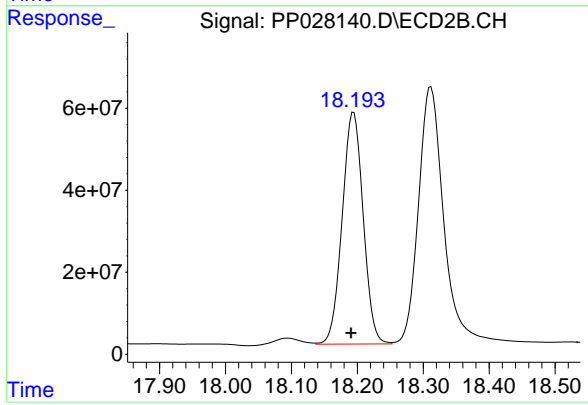
#15 Picloram
 R.T.: 18.312 min
 Delta R.T.: 0.002 min
 Response: 1689512573
 Conc: 461.40 ng/ml



#16 DCPA

R.T.: 18.249 min
Delta R.T.: 0.004 min
Response: 1523371855
Conc: 336.92 ng/ml

Instrument :
ECD_P
ClientSampleId :



#16 DCPA

R.T.: 18.195 min
Delta R.T.: 0.004 min
Response: 1252226142
Conc: 389.58 ng/ml