

Data Path : Z:\pestpcbsrv\HPCHEM1\ECD_P\Data\PP112118\
 Data File : PP028142.D
 Signal(s) : Signal #1: ECD1A.CH Signal #2: ECD2B.CH
 Acq On : 21 Nov 2018 20:19
 Operator : EI\MA
 Sample : HSTDCCC750
 Misc :
 ALS Vial : 3 Sample Multiplier: 1

Instrument :
 ECD_P
 ClientSampleId :

Integration File signal 1: autoint1.e
 Integration File signal 2: autoint2.e
 Quant Time: Nov 22 03:31:59 2018
 Quant Method : Z:\pestpcbsrv\HPCHEM1\ECD_P\methods\PP110918.M
 Quant Title : 8080.M
 QLast Update : Fri Nov 09 17:06:51 2018
 Response via : Initial Calibration
 Integrator: ChemStation 6890 Scale Mode: Large solvent peaks clipped

Volume Inj. : 2 µl
 Signal #1 Phase : ZB-CLPesticides-1 Signal #2 Phase: ZB-CLPesticides-2
 Signal #1 Info : 30M x 0.32mm x0.5 Signal #2 Info : 30M x 0.32mm x 0.25µm

	Compound	RT#1	RT#2	Resp#1	Resp#2	ng/ml	ng/ml

System Monitoring Compounds							
4) S	2,4-DCAA	12.093	12.206	201.5E6	342.9E6	773.918	807.825
Target Compounds							
1) T	Dalapon	3.342	3.011	413.1E6	387.5E6	658.201	662.692
2) T	3,5-DICHL...	10.506	10.297	366.8E6	388.1E6	684.228	750.037
3) T	4-Nitroph...	11.669	11.349	345.5E6	164.8E6	656.454	724.340
5) T	DICAMBA	12.414	12.516	1197.6E6	1271.8E6	723.793	757.310
6) T	MCP P	12.758	12.708	32312151	63380714	69.763	76.348
7) T	MCPA	13.001	13.097	51890091	95021451	71.405	73.507
8) T	DICHLORPROP	13.611	13.630	241.7E6	309.5E6	564.968	751.389 #
9) T	2,4-D	13.962	14.118	281.0E6	368.1E6	731.871	761.190
10) T	Pentachlo...	14.381	14.730	6035.0E6	4831.1E6	720.584	749.408
11) T	2,4,5-TP ...	15.243	15.299	2186.1E6	1868.4E6	726.097	761.106
12) T	2,4,5-T	15.633	15.940	1984.2E6	1620.7E6	715.454	745.750
13) T	2,4-DB	16.397	16.543	169.2E6	203.9E6	745.807	770.598
14) T	DINOSEB	17.886	16.935	1578.2E6	1314.9E6	695.395	731.409
15) T	Picloram	17.648	18.314	3272.0E6	2706.7E6	692.116	764.970
16) T	DCPA	18.250	18.195	3251.0E6	2430.5E6	719.028	756.128

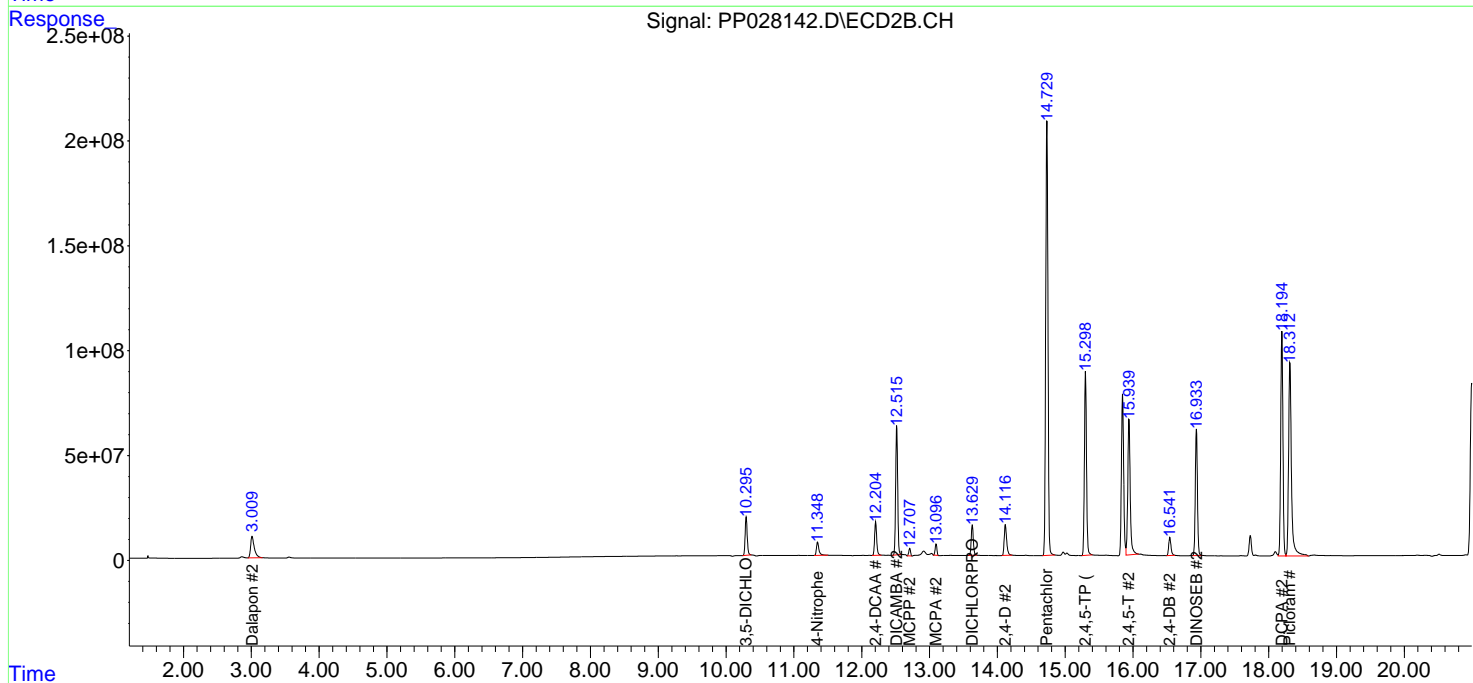
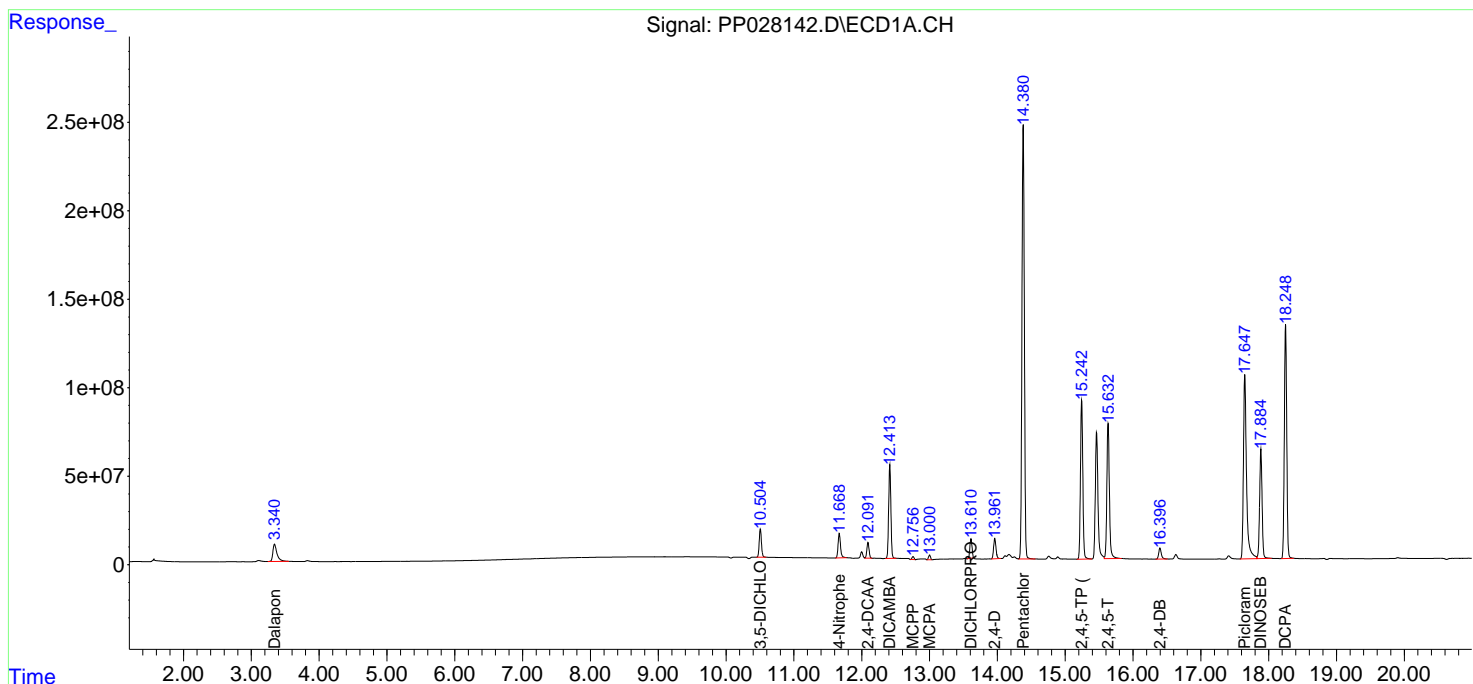
(f)=RT Delta > 1/2 Window (#)=Amounts differ by > 25% (m)=manual int.

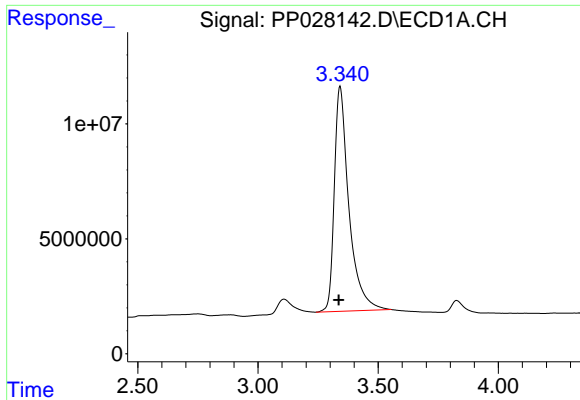
Data Path : Z:\pestpcbsrv\HPCHEM1\ECD_P\Data\PP112118\
 Data File : PP028142.D
 Signal(s) : Signal #1: ECD1A.CH Signal #2: ECD2B.CH
 Acq On : 21 Nov 2018 20:19
 Operator : EI\MA
 Sample : HSTDCCC750
 Misc :
 ALS Vial : 3 Sample Multiplier: 1

Instrument :
 ECD_P
 ClientSampled :

Integration File signal 1: autoint1.e
 Integration File signal 2: autoint2.e
 Quant Time: Nov 22 03:31:59 2018
 Quant Method : Z:\pestpcbsrv\HPCHEM1\ECD_P\methods\PP110918.M
 Quant Title : 8080.M
 QLast Update : Fri Nov 09 17:06:51 2018
 Response via : Initial Calibration
 Integrator: ChemStation 6890 Scale Mode: Large solvent peaks clipped

Volume Inj. : 2 µl
 Signal #1 Phase : ZB-CLPesticides-1 Signal #2 Phase: ZB-CLPesticides-2
 Signal #1 Info : 30M x 0.32mm x0.5 Signal #2 Info : 30M x 0.32mm x 0.25µm

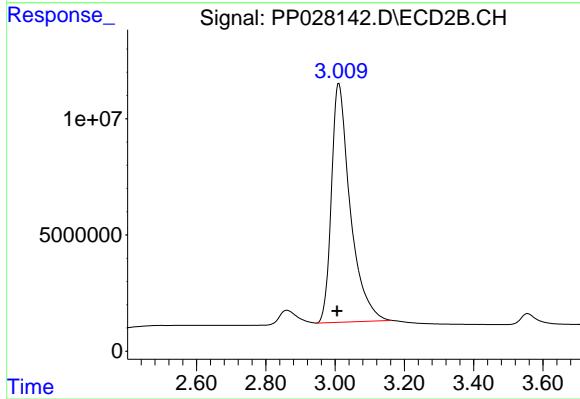




#1 Dalapon

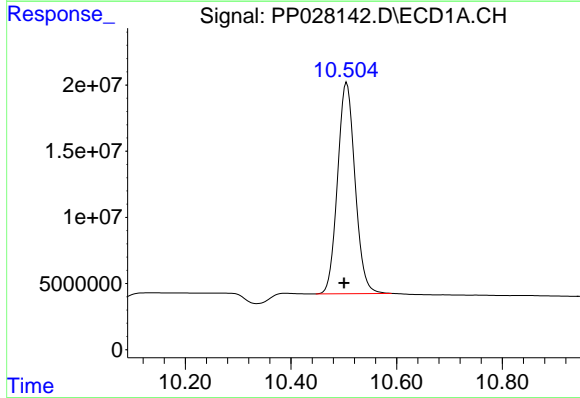
R.T.: 3.342 min
 Delta R.T.: 0.006 min
 Response: 413141183
 Conc: 658.20 ng/ml

Instrument :
 ECD_P
 ClientSampleId :



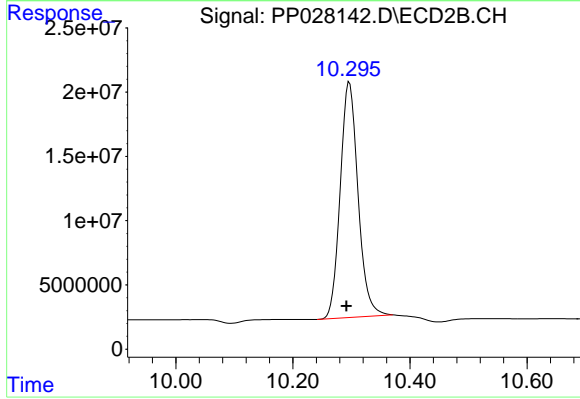
#1 Dalapon

R.T.: 3.011 min
 Delta R.T.: 0.005 min
 Response: 387471104
 Conc: 662.69 ng/ml



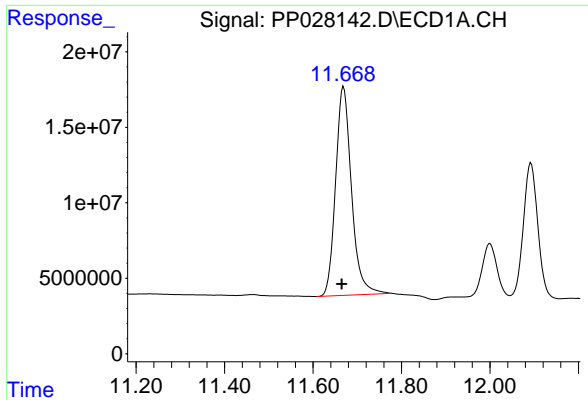
#2 3,5-DICHLOROBENZOIC ACID

R.T.: 10.506 min
 Delta R.T.: 0.005 min
 Response: 366848393
 Conc: 684.23 ng/ml



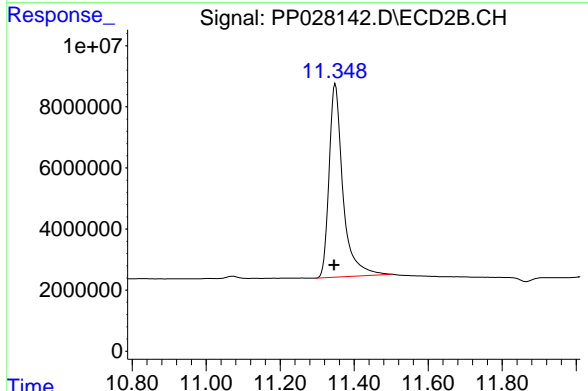
#2 3,5-DICHLOROBENZOIC ACID

R.T.: 10.297 min
 Delta R.T.: 0.005 min
 Response: 388055274
 Conc: 750.04 ng/ml

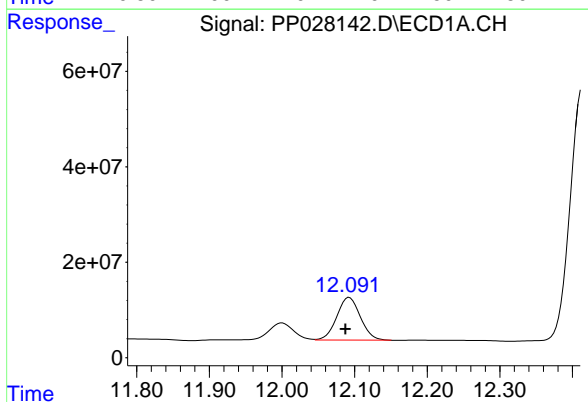


#3 4-Nitrophenol
 R.T.: 11.669 min
 Delta R.T.: 0.004 min
 Response: 345525017
 Conc: 656.45 ng/ml

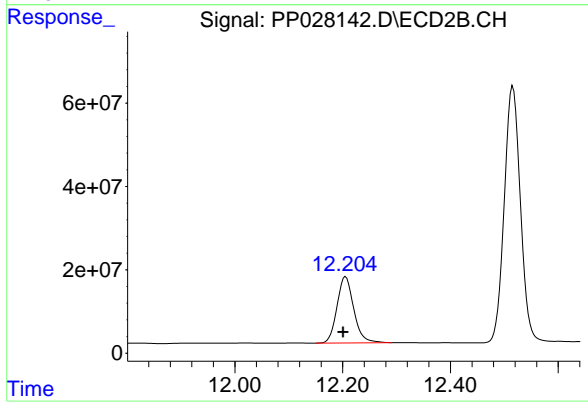
Instrument :
 ECD_P
 ClientSampleId :



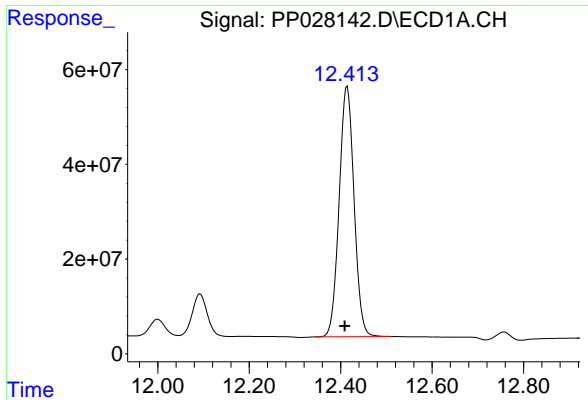
#3 4-Nitrophenol
 R.T.: 11.349 min
 Delta R.T.: 0.003 min
 Response: 164750103
 Conc: 724.34 ng/ml



#4 2,4-DCAA
 R.T.: 12.093 min
 Delta R.T.: 0.005 min
 Response: 201456613
 Conc: 773.92 ng/ml

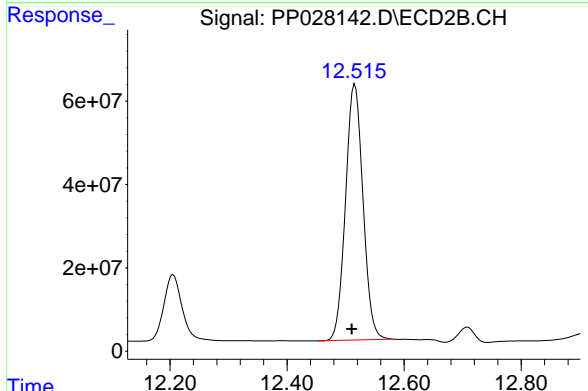


#4 2,4-DCAA
 R.T.: 12.206 min
 Delta R.T.: 0.005 min
 Response: 342862717
 Conc: 807.82 ng/ml

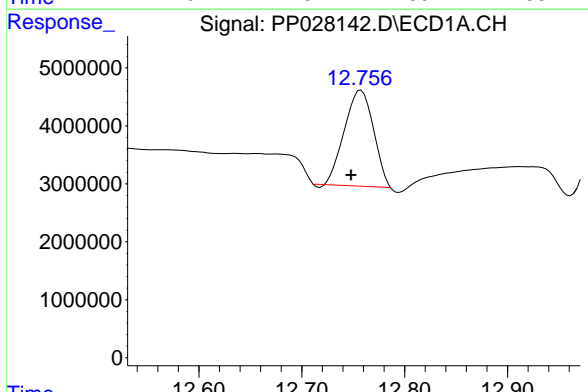


#5 DICAMBA
 R.T.: 12.414 min
 Delta R.T.: 0.005 min
 Response: 1197579954
 Conc: 723.79 ng/ml

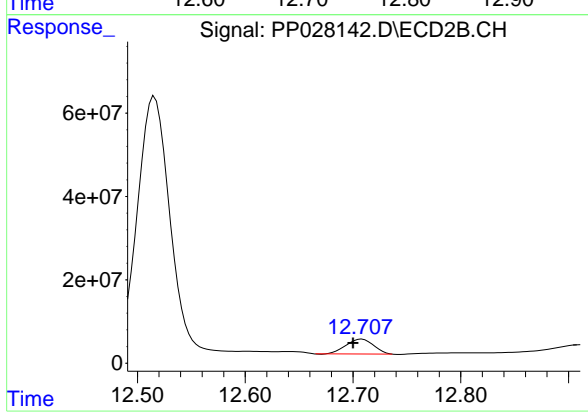
Instrument :
 ECD_P
 ClientSampled :



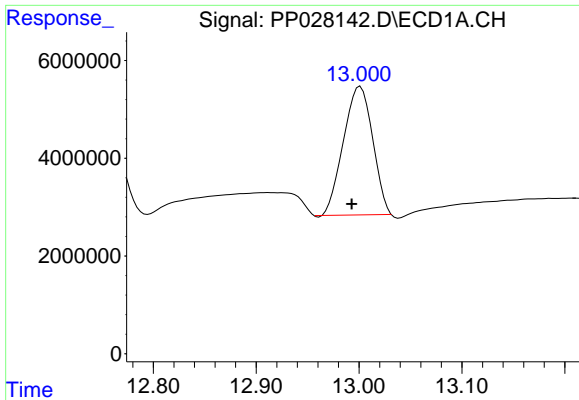
#5 DICAMBA
 R.T.: 12.516 min
 Delta R.T.: 0.005 min
 Response: 1271781218
 Conc: 757.31 ng/ml



#6 MCP
 R.T.: 12.758 min
 Delta R.T.: 0.010 min
 Response: 32312151
 Conc: 69.76 ug/ml

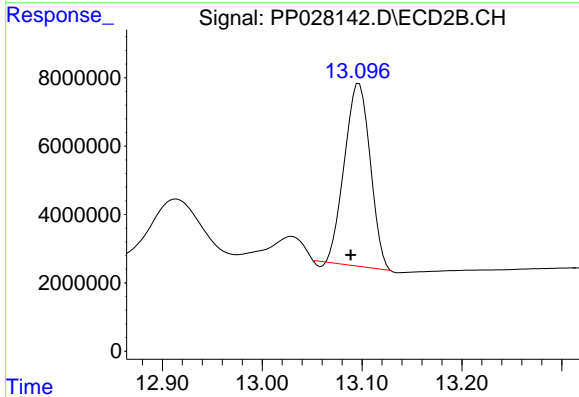


#6 MCP
 R.T.: 12.708 min
 Delta R.T.: 0.008 min
 Response: 63380714
 Conc: 76.35 ug/ml

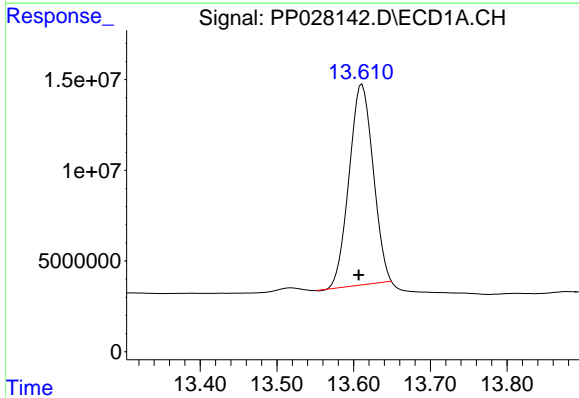


#7 MCPA
 R.T.: 13.001 min
 Delta R.T.: 0.008 min
 Response: 51890091
 Conc: 71.40 ug/ml

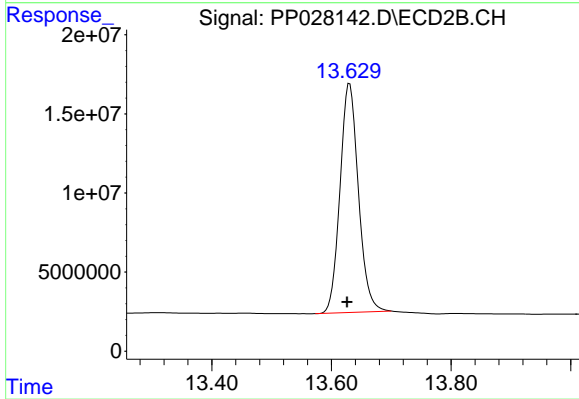
Instrument :
 ECD_P
 ClientSampleId :



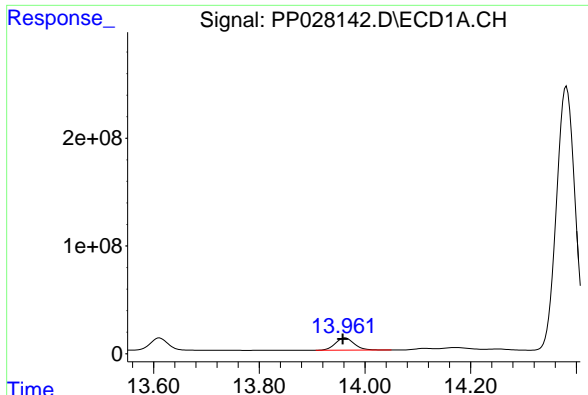
#7 MCPA
 R.T.: 13.097 min
 Delta R.T.: 0.008 min
 Response: 95021451
 Conc: 73.51 ug/ml



#8 DICHLORPROP
 R.T.: 13.611 min
 Delta R.T.: 0.004 min
 Response: 241744706
 Conc: 564.97 ng/ml



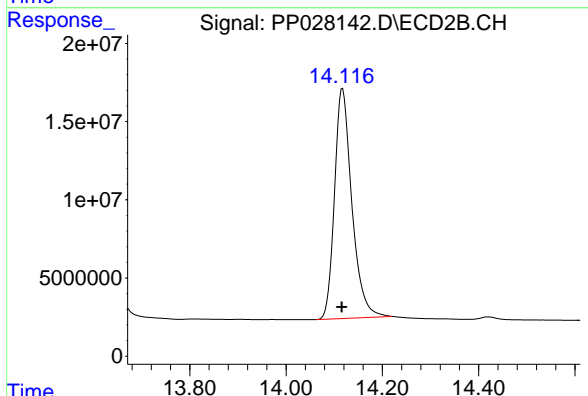
#8 DICHLORPROP
 R.T.: 13.630 min
 Delta R.T.: 0.004 min
 Response: 309506450
 Conc: 751.39 ng/ml



#9 2,4-D

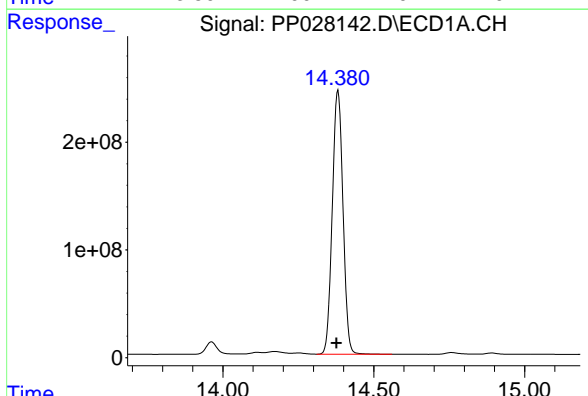
R.T.: 13.962 min
 Delta R.T.: 0.004 min
 Response: 281019232
 Conc: 731.87 ng/ml

Instrument :
 ECD_P
 ClientSampled :



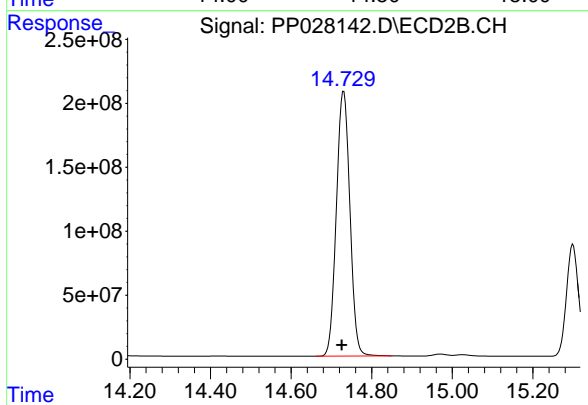
#9 2,4-D

R.T.: 14.118 min
 Delta R.T.: 0.002 min
 Response: 368060952
 Conc: 761.19 ng/ml



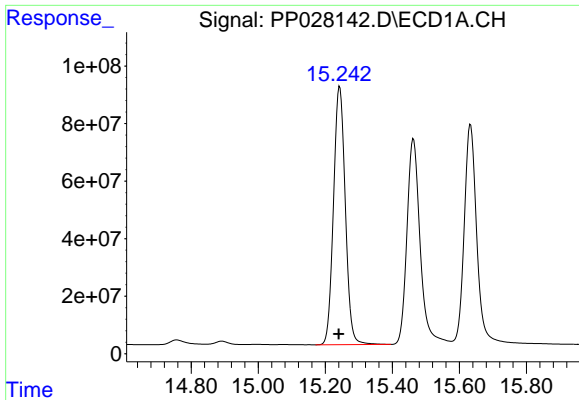
#10 Pentachlorophenol

R.T.: 14.381 min
 Delta R.T.: 0.005 min
 Response: 6034986858
 Conc: 720.58 ng/ml



#10 Pentachlorophenol

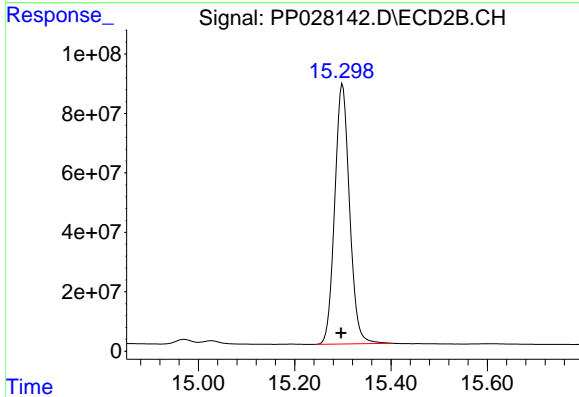
R.T.: 14.730 min
 Delta R.T.: 0.005 min
 Response: 4831149318
 Conc: 749.41 ng/ml



#11 2,4,5-TP (SILVEX)

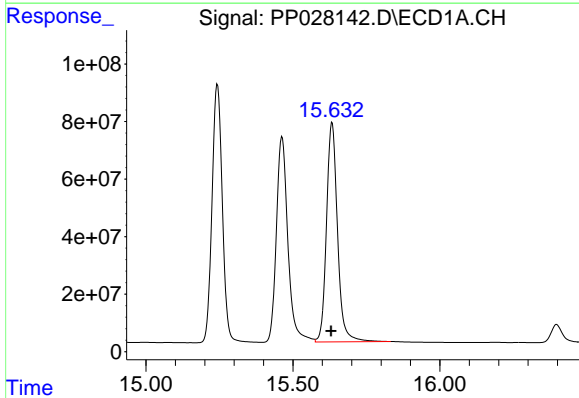
R.T.: 15.243 min
 Delta R.T.: 0.003 min
 Response: 2186141501
 Conc: 726.10 ng/ml

Instrument :
 ECD_P
 ClientSampleId :



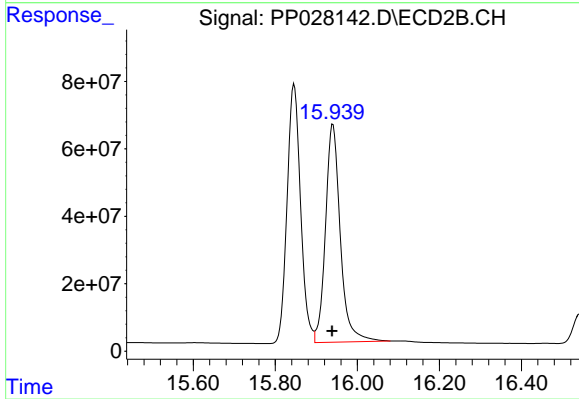
#11 2,4,5-TP (SILVEX)

R.T.: 15.299 min
 Delta R.T.: 0.003 min
 Response: 1868440118
 Conc: 761.11 ng/ml



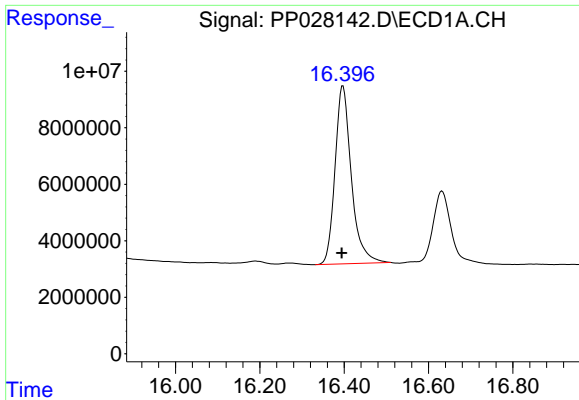
#12 2,4,5-T

R.T.: 15.633 min
 Delta R.T.: 0.003 min
 Response: 1984245424
 Conc: 715.45 ng/ml



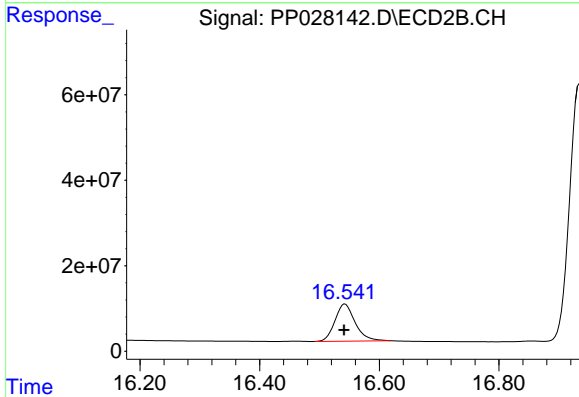
#12 2,4,5-T

R.T.: 15.940 min
 Delta R.T.: 0.002 min
 Response: 1620722721
 Conc: 745.75 ng/ml

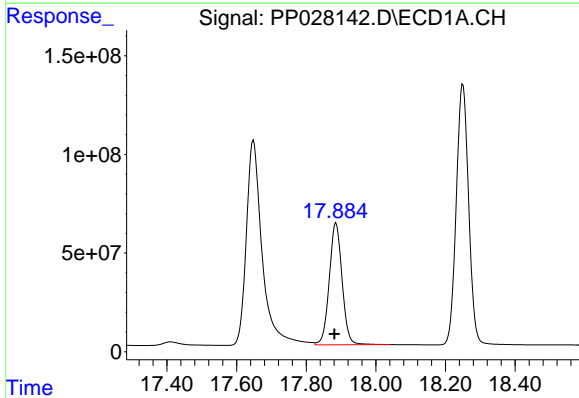


#13 2,4-DB
 R.T.: 16.397 min
 Delta R.T.: 0.003 min
 Response: 169242562
 Conc: 745.81 ng/ml

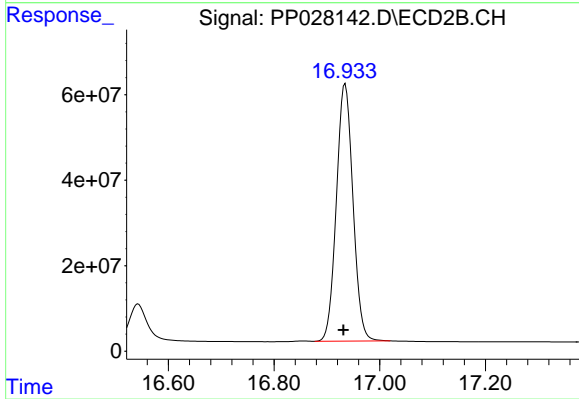
Instrument :
 ECD_P
 ClientSampled :



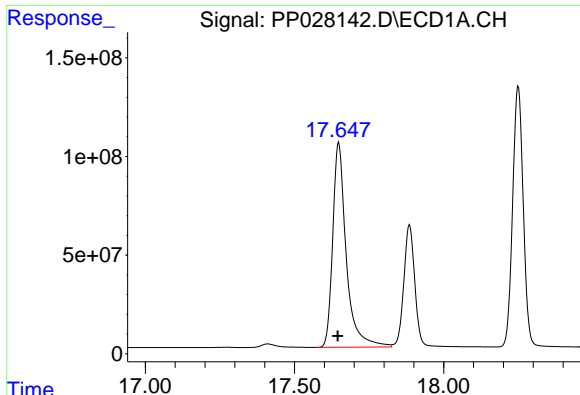
#13 2,4-DB
 R.T.: 16.543 min
 Delta R.T.: 0.002 min
 Response: 203922805
 Conc: 770.60 ng/ml



#14 DINOSEB
 R.T.: 17.886 min
 Delta R.T.: 0.005 min
 Response: 1578210317
 Conc: 695.40 ng/ml



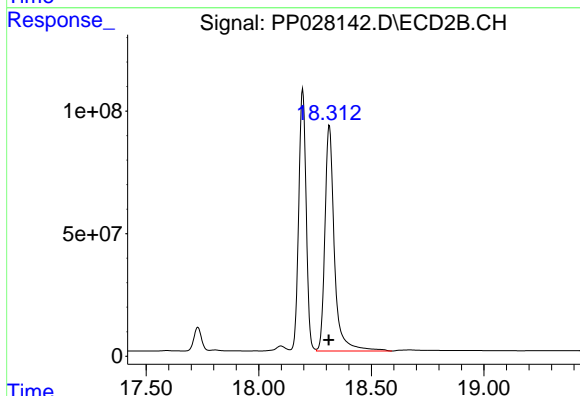
#14 DINOSEB
 R.T.: 16.935 min
 Delta R.T.: 0.004 min
 Response: 1314857510
 Conc: 731.41 ng/ml



#15 Picloram

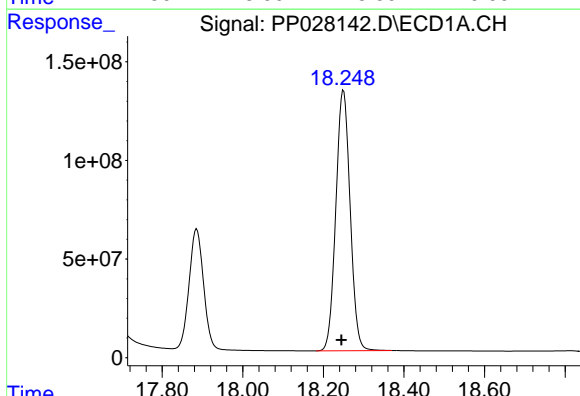
R.T.: 17.648 min
 Delta R.T.: 0.003 min
 Response: 3272036667
 Conc: 692.12 ng/ml

Instrument :
 ECD_P
 ClientSampleId :



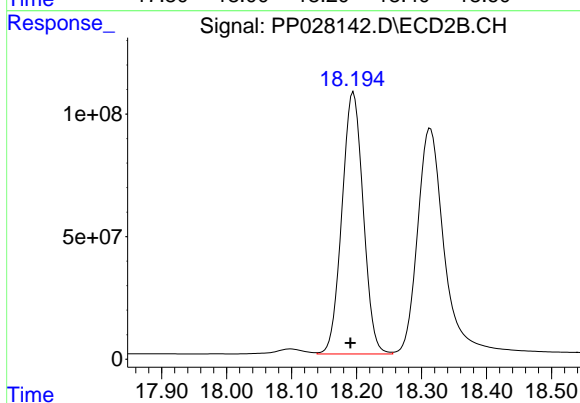
#15 Picloram

R.T.: 18.314 min
 Delta R.T.: 0.003 min
 Response: 2706669790
 Conc: 764.97 ng/ml



#16 DCPA

R.T.: 18.250 min
 Delta R.T.: 0.005 min
 Response: 3251016300
 Conc: 719.03 ng/ml



#16 DCPA

R.T.: 18.195 min
 Delta R.T.: 0.004 min
 Response: 2430451876
 Conc: 756.13 ng/ml