

Data Path : Z:\pestpcbsrv\HPCHEM1\ECD_P\Data\PP112118\
 Data File : PP028150.D
 Signal(s) : Signal #1: ECD1A.CH Signal #2: ECD2B.CH
 Acq On : 21 Nov 2018 23:43
 Operator : EI\MA
 Sample : HSTDCCC750
 Misc :
 ALS Vial : 3 Sample Multiplier: 1

Instrument :
 ECD_P
 ClientSampleId :

Integration File signal 1: autoint1.e
 Integration File signal 2: autoint2.e
 Quant Time: Nov 22 03:33:16 2018
 Quant Method : Z:\pestpcbsrv\HPCHEM1\ECD_P\methods\PP110918.M
 Quant Title : 8080.M
 QLast Update : Fri Nov 09 17:06:51 2018
 Response via : Initial Calibration
 Integrator: ChemStation 6890 Scale Mode: Large solvent peaks clipped

Volume Inj. : 2 µl
 Signal #1 Phase : ZB-CLPesticides-1 Signal #2 Phase: ZB-CLPesticides-2
 Signal #1 Info : 30M x 0.32mm x0.5 Signal #2 Info : 30M x 0.32mm x 0.25µm

	Compound	RT#1	RT#2	Resp#1	Resp#2	ng/ml	ng/ml

System Monitoring Compounds							
4) S	2,4-DCAA	12.093	12.207	204.6E6	346.0E6	785.941	815.189
Target Compounds							
1) T	Dalapon	3.341	3.012	409.8E6	383.4E6	652.932	655.808
2) T	3,5-DICHL...	10.507	10.298	368.0E6	389.6E6	686.293	753.076
3) T	4-Nitroph...	11.670	11.350	341.0E6	167.1E6	647.841	734.582
5) T	DICAMBA	12.415	12.517	1199.4E6	1275.2E6	724.908	759.371
6) T	MCP P	12.758	12.709	30623085	62777803	66.327	75.621
7) T	MCPA	13.002	13.099	50287017	94746852	69.301	73.295
8) T	DICHLORPROP	13.613	13.632	244.1E6	313.0E6	570.491	759.832 #
9) T	2,4-D	13.964	14.119	285.4E6	372.4E6	743.221	770.133
10) T	Pentachlo...	14.382	14.732	6047.2E6	4876.5E6	722.042	756.447
11) T	2,4,5-TP ...	15.244	15.301	2195.7E6	1883.8E6	729.274	767.381
12) T	2,4,5-T	15.634	15.941	1997.5E6	1635.6E6	720.237	752.587
13) T	2,4-DB	16.397	16.543	170.5E6	207.4E6	751.375	783.486
14) T	DINOSEB	17.887	16.935	1584.8E6	1322.7E6	698.319	735.787
15) T	Picloram	17.649	18.315	3279.7E6	2728.8E6	693.765	771.586
16) T	DCPA	18.251	18.196	3261.5E6	2441.8E6	721.356	759.657

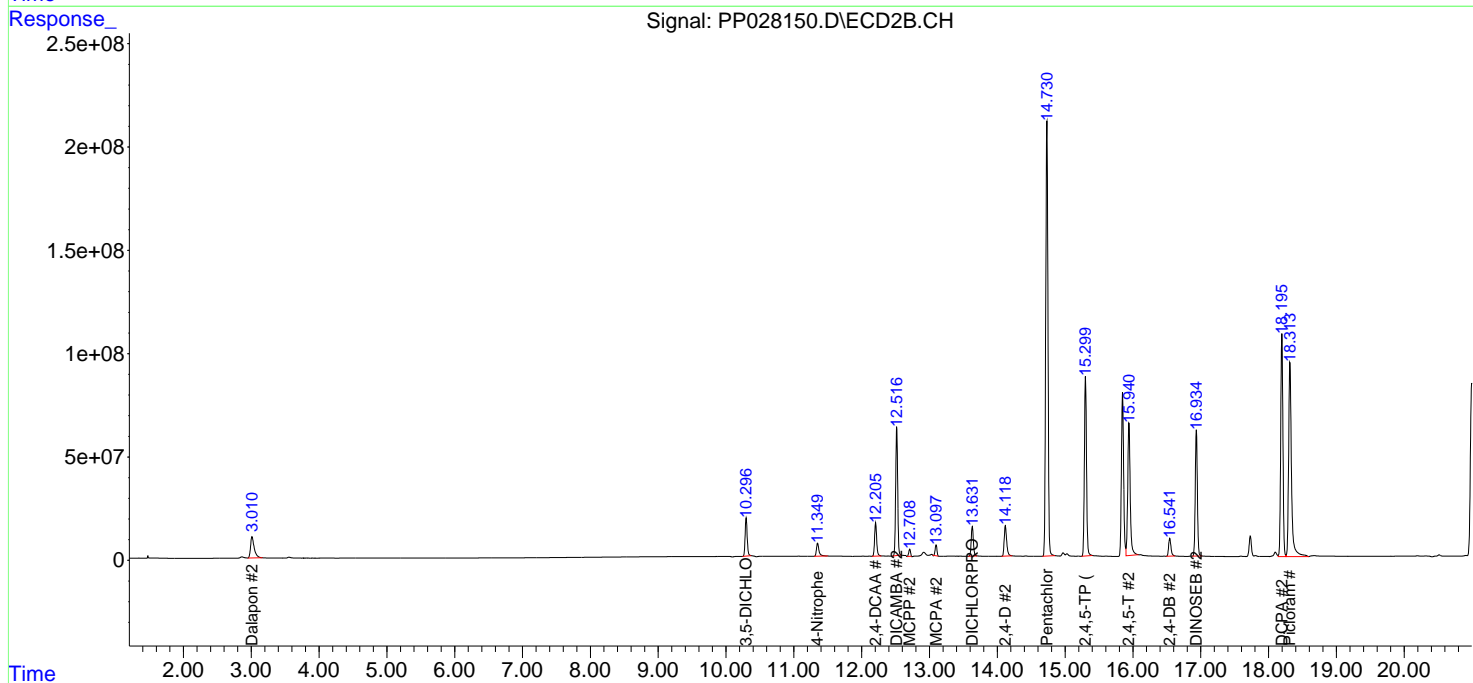
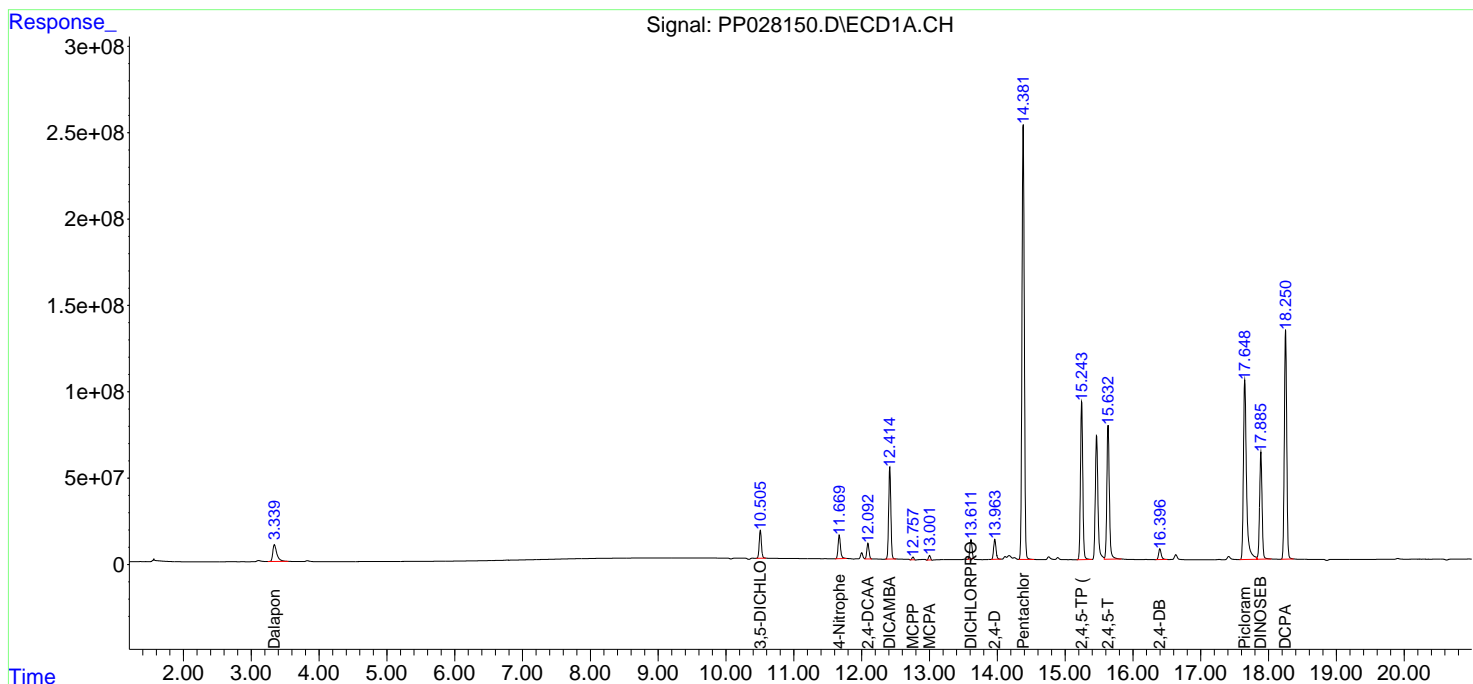
(f)=RT Delta > 1/2 Window (#)=Amounts differ by > 25% (m)=manual int.

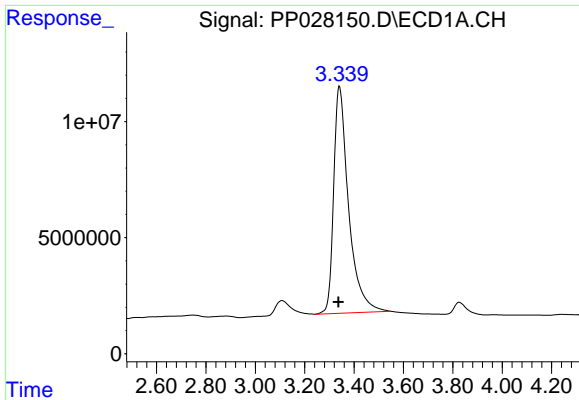
Data Path : Z:\pestpcbsrv\HPCHEM1\ECD_P\Data\PP112118\
 Data File : PP028150.D
 Signal(s) : Signal #1: ECD1A.CH Signal #2: ECD2B.CH
 Acq On : 21 Nov 2018 23:43
 Operator : EI\MA
 Sample : HSTDCCC750
 Misc :
 ALS Vial : 3 Sample Multiplier: 1

Instrument :
 ECD_P
 ClientSampled :

Integration File signal 1: autoint1.e
 Integration File signal 2: autoint2.e
 Quant Time: Nov 22 03:33:16 2018
 Quant Method : Z:\pestpcbsrv\HPCHEM1\ECD_P\methods\PP110918.M
 Quant Title : 8080.M
 QLast Update : Fri Nov 09 17:06:51 2018
 Response via : Initial Calibration
 Integrator: ChemStation 6890 Scale Mode: Large solvent peaks clipped

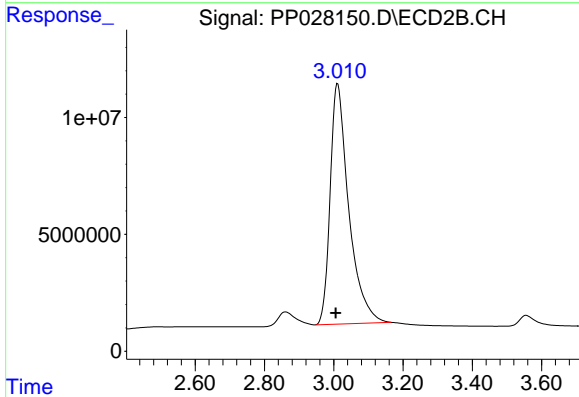
Volume Inj. : 2 µl
 Signal #1 Phase : ZB-CLPesticides-1 Signal #2 Phase: ZB-CLPesticides-2
 Signal #1 Info : 30M x 0.32mm x0.5 Signal #2 Info : 30M x 0.32mm x 0.25µm



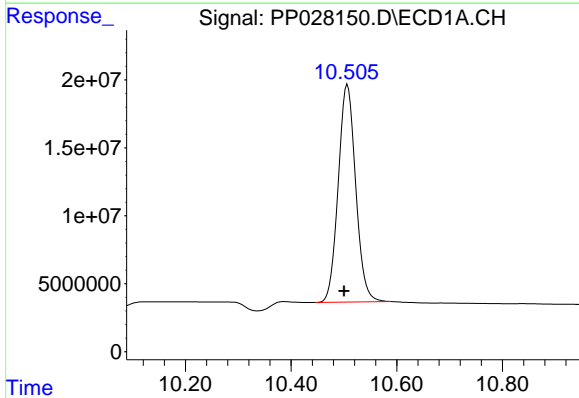


#1 Dalapon
 R.T.: 3.341 min
 Delta R.T.: 0.005 min
 Response: 409833916
 Conc: 652.93 ng/ml

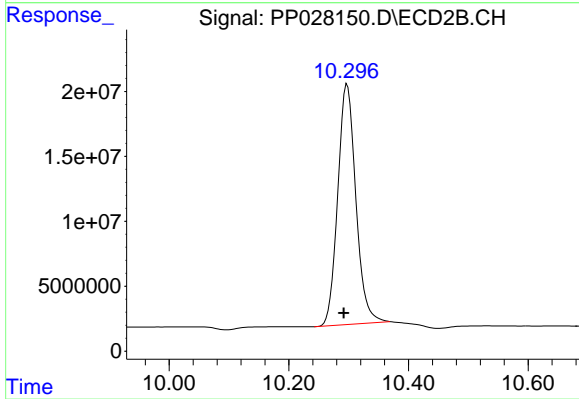
Instrument :
 ECD_P
 ClientSampleId :



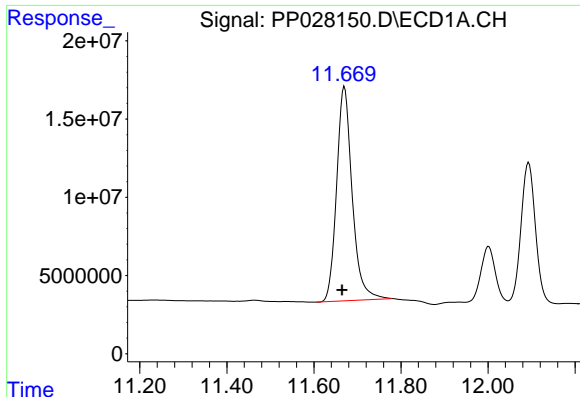
#1 Dalapon
 R.T.: 3.012 min
 Delta R.T.: 0.006 min
 Response: 383446211
 Conc: 655.81 ng/ml



#2 3,5-DICHLOROBENZOIC ACID
 R.T.: 10.507 min
 Delta R.T.: 0.006 min
 Response: 367955803
 Conc: 686.29 ng/ml



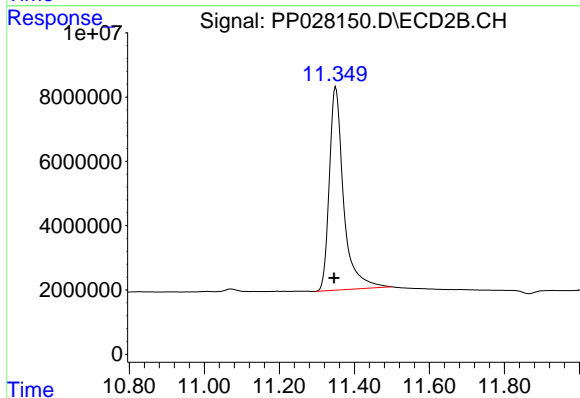
#2 3,5-DICHLOROBENZOIC ACID
 R.T.: 10.298 min
 Delta R.T.: 0.006 min
 Response: 389627785
 Conc: 753.08 ng/ml



#3 4-Nitrophenol

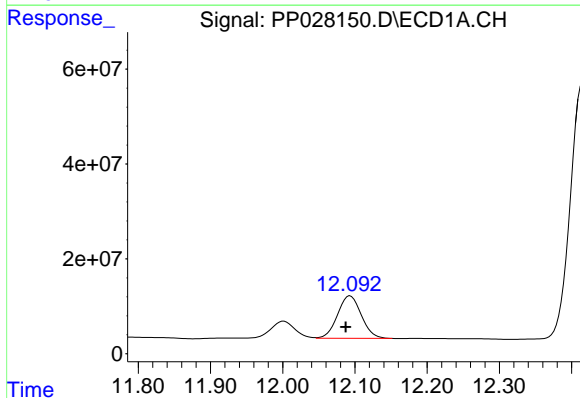
R.T.: 11.670 min
 Delta R.T.: 0.005 min
 Response: 340991309
 Conc: 647.84 ng/ml

Instrument :
 ECD_P
 ClientSampled :



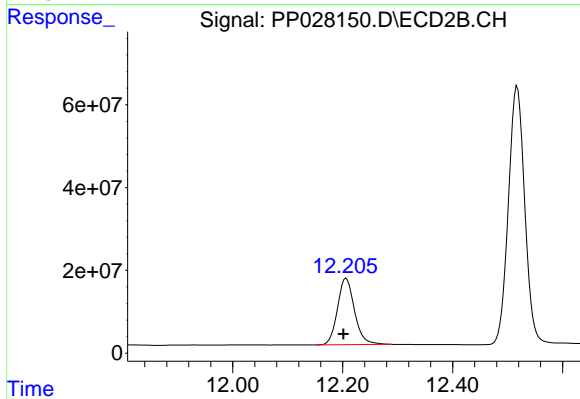
#3 4-Nitrophenol

R.T.: 11.350 min
 Delta R.T.: 0.004 min
 Response: 167079561
 Conc: 734.58 ng/ml



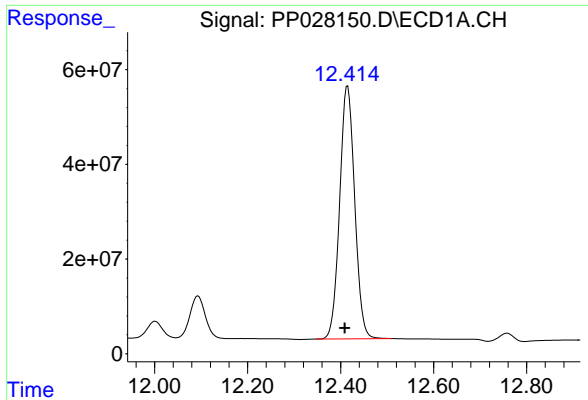
#4 2,4-DCAA

R.T.: 12.093 min
 Delta R.T.: 0.006 min
 Response: 204586221
 Conc: 785.94 ng/ml



#4 2,4-DCAA

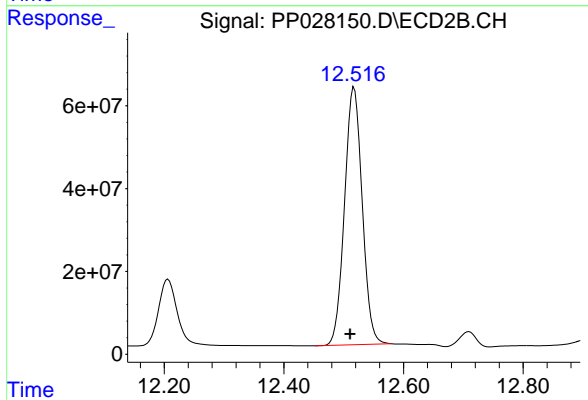
R.T.: 12.207 min
 Delta R.T.: 0.005 min
 Response: 345988491
 Conc: 815.19 ng/ml



#5 DICAMBA

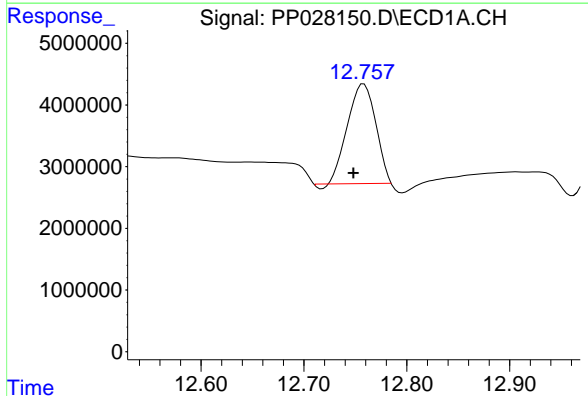
R.T.: 12.415 min
 Delta R.T.: 0.006 min
 Response: 1199425385
 Conc: 724.91 ng/ml

Instrument :
 ECD_P
 ClientSampleId :



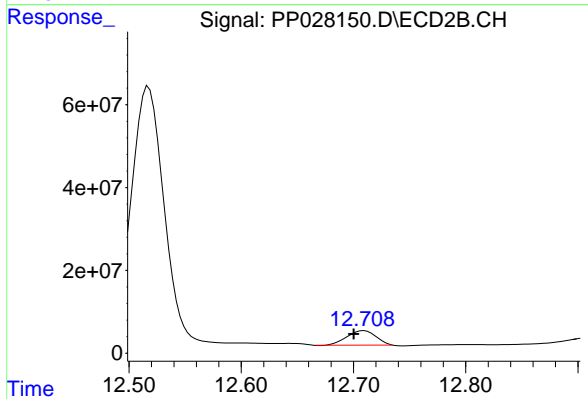
#5 DICAMBA

R.T.: 12.517 min
 Delta R.T.: 0.007 min
 Response: 1275242702
 Conc: 759.37 ng/ml



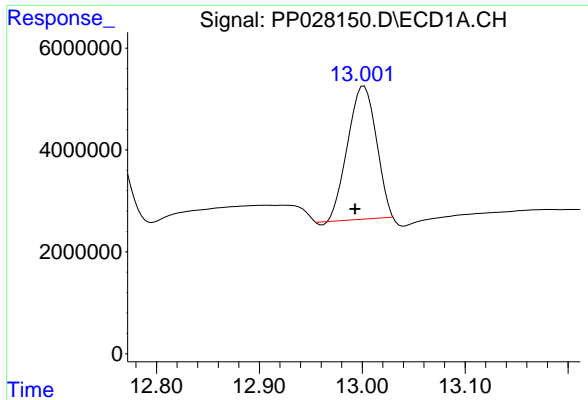
#6 MCPP

R.T.: 12.758 min
 Delta R.T.: 0.010 min
 Response: 30623085
 Conc: 66.33 ug/ml



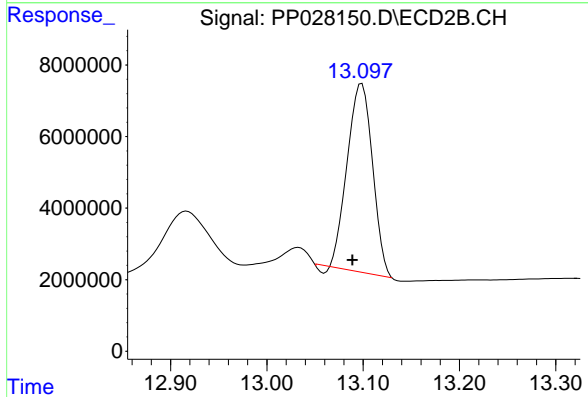
#6 MCPP

R.T.: 12.709 min
 Delta R.T.: 0.009 min
 Response: 62777803
 Conc: 75.62 ug/ml

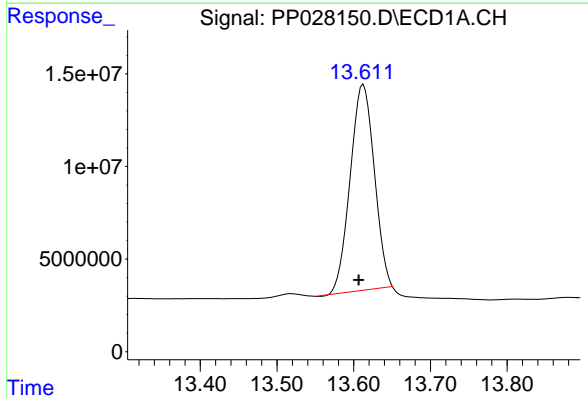


#7 MCPA
 R.T.: 13.002 min
 Delta R.T.: 0.009 min
 Response: 50287017
 Conc: 69.30 ug/ml

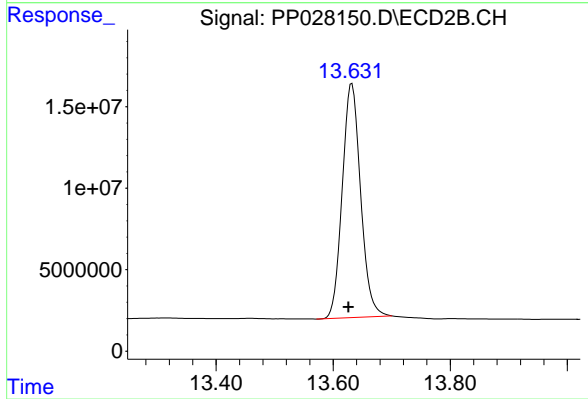
Instrument :
 ECD_P
 ClientSampled :



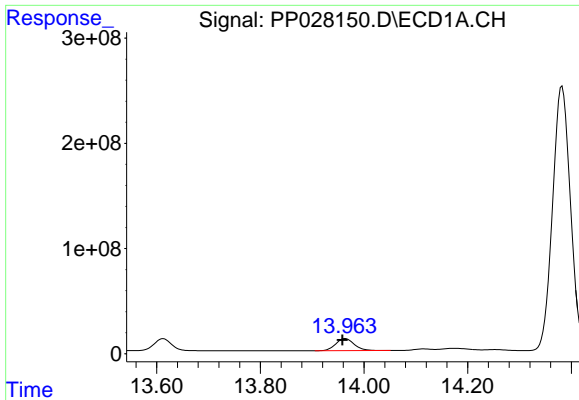
#7 MCPA
 R.T.: 13.099 min
 Delta R.T.: 0.010 min
 Response: 94746852
 Conc: 73.30 ug/ml



#8 DICHLORPROP
 R.T.: 13.613 min
 Delta R.T.: 0.006 min
 Response: 244107729
 Conc: 570.49 ng/ml

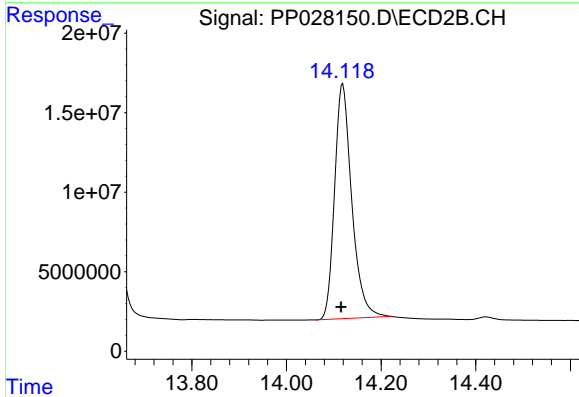


#8 DICHLORPROP
 R.T.: 13.632 min
 Delta R.T.: 0.006 min
 Response: 312984477
 Conc: 759.83 ng/ml

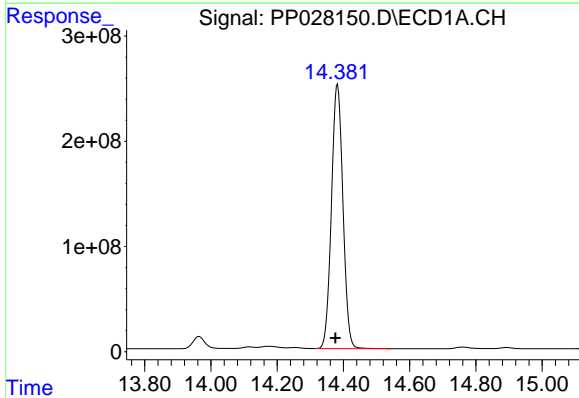


#9 2,4-D
 R.T.: 13.964 min
 Delta R.T.: 0.006 min
 Response: 285377141
 Conc: 743.22 ng/ml

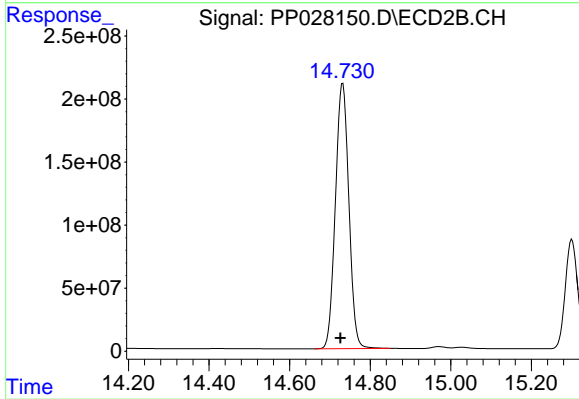
Instrument :
 ECD_P
 ClientSampled :



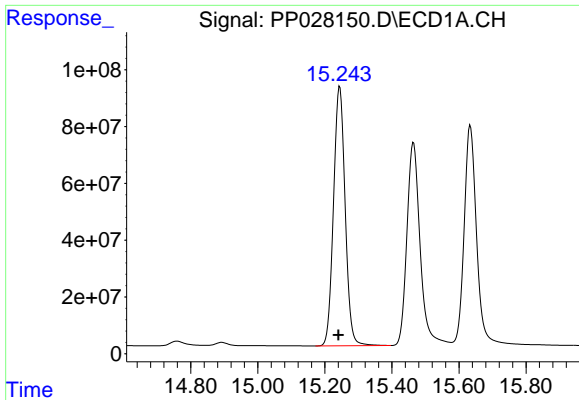
#9 2,4-D
 R.T.: 14.119 min
 Delta R.T.: 0.003 min
 Response: 372385641
 Conc: 770.13 ng/ml



#10 Pentachlorophenol
 R.T.: 14.382 min
 Delta R.T.: 0.006 min
 Response: 6047197344
 Conc: 722.04 ng/ml

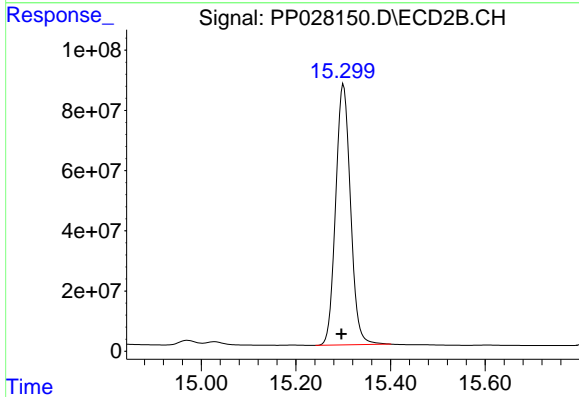


#10 Pentachlorophenol
 R.T.: 14.732 min
 Delta R.T.: 0.006 min
 Response: 4876523690
 Conc: 756.45 ng/ml

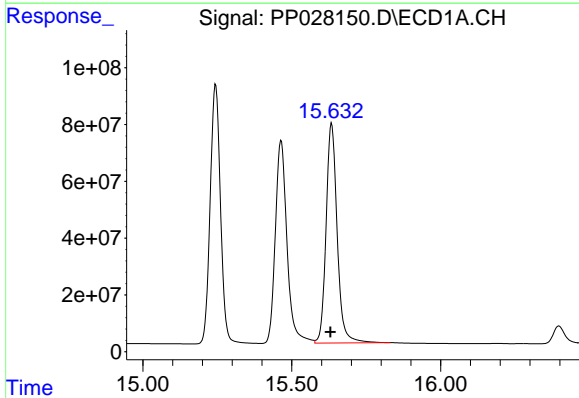


#11 2,4,5-TP (SILVEX)
 R.T.: 15.244 min
 Delta R.T.: 0.004 min
 Response: 2195707795
 Conc: 729.27 ng/ml

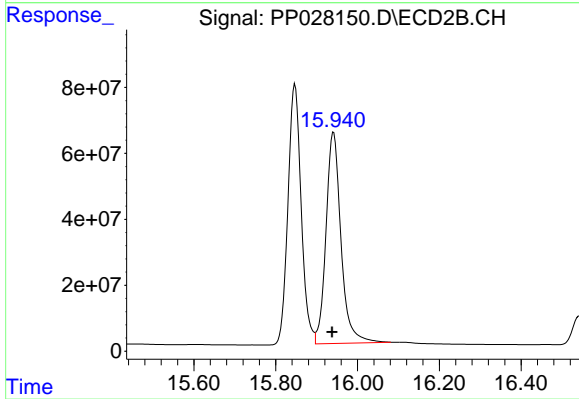
Instrument :
 ECD_P
 ClientSampleId :



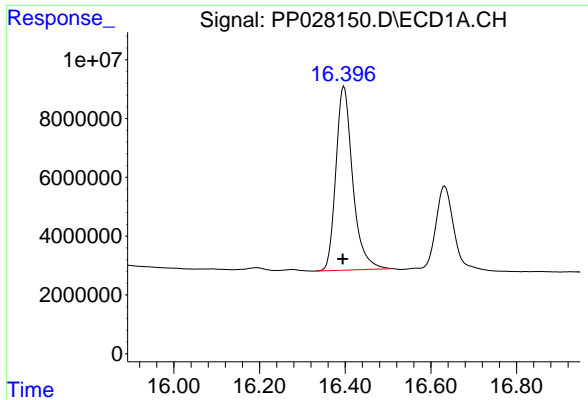
#11 2,4,5-TP (SILVEX)
 R.T.: 15.301 min
 Delta R.T.: 0.004 min
 Response: 1883843265
 Conc: 767.38 ng/ml



#12 2,4,5-T
 R.T.: 15.634 min
 Delta R.T.: 0.004 min
 Response: 1997510763
 Conc: 720.24 ng/ml

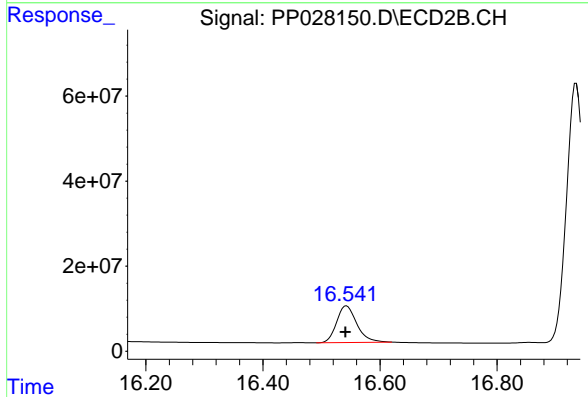


#12 2,4,5-T
 R.T.: 15.941 min
 Delta R.T.: 0.004 min
 Response: 1635581965
 Conc: 752.59 ng/ml

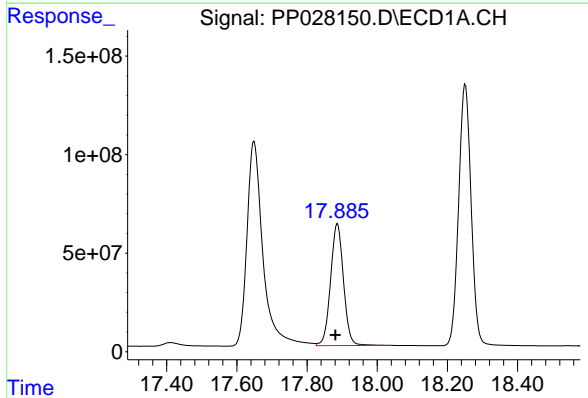


#13 2,4-DB
 R.T.: 16.397 min
 Delta R.T.: 0.003 min
 Response: 170507955
 Conc: 751.38 ng/ml

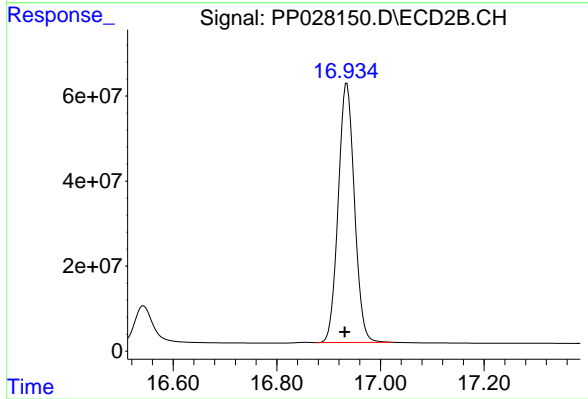
Instrument :
 ECD_P
 ClientSampled :



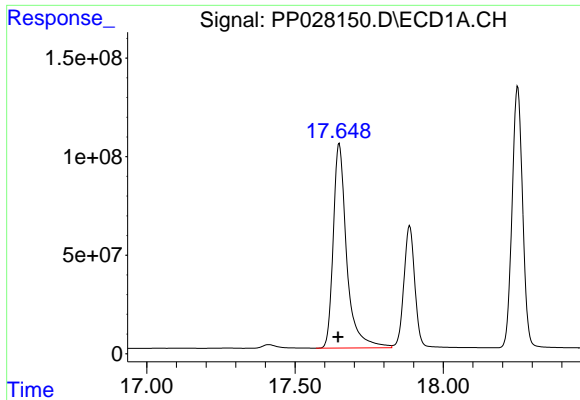
#13 2,4-DB
 R.T.: 16.543 min
 Delta R.T.: 0.002 min
 Response: 207422516
 Conc: 783.49 ng/ml



#14 DINOSEB
 R.T.: 17.887 min
 Delta R.T.: 0.006 min
 Response: 1584846607
 Conc: 698.32 ng/ml

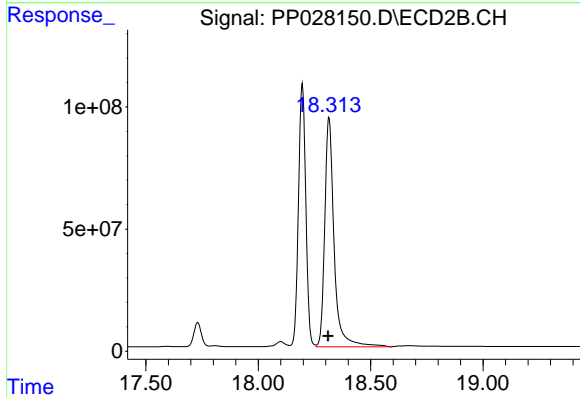


#14 DINOSEB
 R.T.: 16.935 min
 Delta R.T.: 0.004 min
 Response: 1322728962
 Conc: 735.79 ng/ml

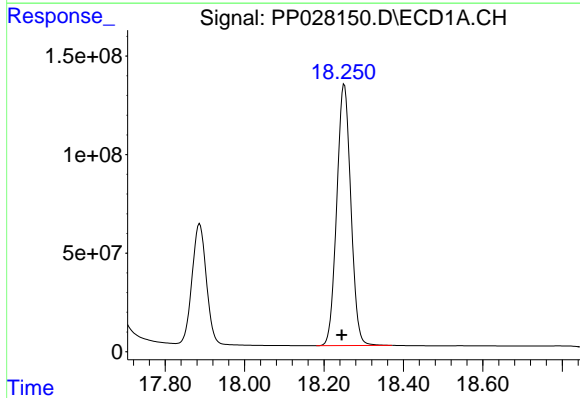


#15 Picloram
 R.T.: 17.649 min
 Delta R.T.: 0.004 min
 Response: 3279653007
 Conc: 693.77 ng/ml

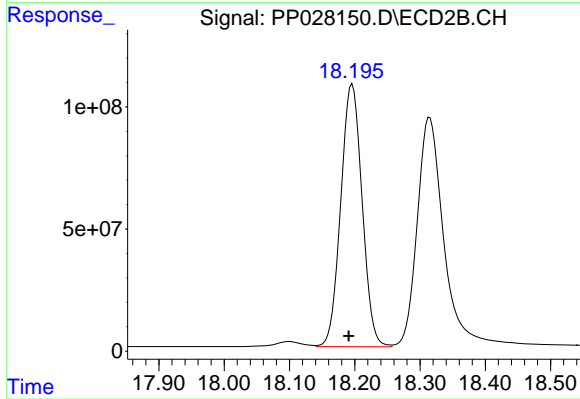
Instrument :
 ECD_P
 ClientSampleId :



#15 Picloram
 R.T.: 18.315 min
 Delta R.T.: 0.005 min
 Response: 2728835707
 Conc: 771.59 ng/ml



#16 DCPA
 R.T.: 18.251 min
 Delta R.T.: 0.006 min
 Response: 3261541133
 Conc: 721.36 ng/ml



#16 DCPA
 R.T.: 18.196 min
 Delta R.T.: 0.005 min
 Response: 2441793943
 Conc: 759.66 ng/ml