

Data Path : Z:\pestpcbsrv\HPCHEM1\ECD_P\Data\PP112120\
 Data File : PP031495.D
 Signal(s) : Signal #1: ECD1A.CH Signal #2: ECD2B.CH
 Acq On : 21 Nov 2020 7:59
 Operator : DD\AJ
 Sample : AR1660CCC500
 Misc :
 ALS Vial : 3 Sample Multiplier: 1

Instrument :
 ECD_P
 Client Sampled :
 AR1660CCC500

Integration File signal 1: autoint1.e
 Integration File signal 2: autoint2.e
 Quant Time: Nov 23 00:47:38 2020
 Quant Method : Z:\pestpcbsrv\HPCHEM1\ECD_P\methods\PP111720.M
 Quant Title : GC EXTRACTABLES
 QLast Update : Wed Nov 18 01:50:50 2020
 Response via : Initial Calibration
 Integrator: ChemStation 6890 Scale Mode: Small noise peaks clipped

Volume Inj. : 2 µl
 Signal #1 Phase : ZB-MR1 Signal #2 Phase: ZB-MR2
 Signal #1 Info : 30Mx0.32mmx 0.50µ Signal #2 Info : 30M x 0.32mm x 0.25µm

Compound	RT#1	RT#2	Resp#1	Resp#2	ng/ml	ng/ml

System Monitoring Compounds						
1) SA Tetrachlo...	4.794	4.066	2253517	2162773	55.316	51.731
2) SA Decachlor...	10.668	9.371	1608093	1825804	52.357	54.526
Target Compounds						
3) L1 AR-1016-1	6.097	5.320	688302	643419	547.052	505.161
4) L1 AR-1016-2	6.121	5.341	1014615	956376	539.527	510.254
5) L1 AR-1016-3	6.186	5.532	626418	523447	547.263	523.878
6) L1 AR-1016-4	6.291	5.583	526056	397159	546.942	539.311
7) L1 AR-1016-5	6.606	5.811	498351	489066	568.586	503.134
8) L2 AR-1221-1	5.035	4.322	72518	60216	154.471	131.742
9) L2 AR-1221-2	5.137	4.421	104744	93482	301.234	264.726
10) L2 AR-1221-3	5.222	4.509	388388	362453	364.313	334.803
11) L3 AR-1232-1	5.222	4.509	388388	362453	449.004	421.517
12) L3 AR-1232-2	5.804	5.341	527106	956376	1205.482	1162.434
13) L3 AR-1232-3	6.121	5.532	1014615	523447	1220.285	1207.850
14) L3 AR-1232-4	6.291	5.628	526056	485205	1251.304	1370.659
15) L3 AR-1232-5	6.391	5.811	384369	489066	1517.954	1228.845
16) L4 AR-1242-1	6.097	5.320	688302	643419	718.165	672.493
17) L4 AR-1242-2	6.121	5.341	1014615	956376	714.058	679.743
18) L4 AR-1242-3	6.186	5.532	626418	523447	705.524	676.844
19) L4 AR-1242-4	6.291	5.628	526056	485205	706.726	687.664
20) L4 AR-1242-5	7.070	6.191	75084	399931	101.805	452.518 #
21) L5 AR-1248-1	6.097	5.320	688302	643419	925.190	856.676
22) L5 AR-1248-2	6.391	5.583	384369	397159	408.879	394.843
23) L5 AR-1248-3	6.606	5.628	498351	485205	425.363	453.520
24) L5 AR-1248-4	7.032	5.811	87954	489066	69.653	382.362 #
25) L5 AR-1248-5	7.070	6.235	75084	84572	59.772	67.331
26) L6 AR-1254-1	7.003	6.191	288996	399931	224.988	210.155
27) L6 AR-1254-2	7.230	6.350	335621	389158	173.849	237.745 #
28) L6 AR-1254-3	7.609	6.789	240284	687091	110.843	251.669 #
29) L6 AR-1254-4	7.902	7.010	167237	93086	110.762	59.901 #
30) L6 AR-1254-5	8.330	7.438	1089503	1236820	666.459	511.551
31) L7 AR-1260-1	7.777	6.907	780412	881784	558.789	527.728
32) L7 AR-1260-2	8.042	7.104	921340	1094612	553.674	537.880
33) L7 AR-1260-3	8.408	7.259	723261	1029320	566.157	533.489
34) L7 AR-1260-4	8.636	7.741	829742	877061	542.762	543.852
35) L7 AR-1260-5	8.950	7.988	1683602	2120434	534.209	536.715
36) L8 AR-1262-1	8.408	7.479	723261	987068	400.544	433.117
37) L8 AR-1262-2	8.950	7.988	1683602	2120434	498.881	515.559
38) L8 AR-1262-3	9.264	8.275	1065336	453657	455.796	284.627 #
39) L8 AR-1262-4	9.335	8.338	332100	1588669	176.491	507.434 #
40) L8 AR-1262-5	9.963	8.836	527240	617874	413.834	437.836
41) L9 AR-1268-1	9.264	8.275	1065336	453657	252.432	92.170 #
42) L9 AR-1268-2	9.335	8.338	332100	1588669	80.409	326.732 #

Data Path : Z:\pestpcbsrv\HPCHEM1\ECD_P\Data\PP112120\
 Data File : PP031495.D
 Signal(s) : Signal #1: ECD1A.CH Signal #2: ECD2B.CH
 Acq On : 21 Nov 2020 7:59
 Operator : DD\AJ
 Sample : AR1660CCC500
 Misc :
 ALS Vial : 3 Sample Multiplier: 1

Instrument :
 ECD_P
ClientSampleId :
 AR1660CCC500

Integration File signal 1: autoint1.e
 Integration File signal 2: autoint2.e
 Quant Time: Nov 23 00:47:38 2020
 Quant Method : Z:\pestpcbsrv\HPCHEM1\ECD_P\methods\PP111720.M
 Quant Title : GC EXTRACTABLES
 QLast Update : Wed Nov 18 01:50:50 2020
 Response via : Initial Calibration
 Integrator: ChemStation 6890 Scale Mode: Small noise peaks clipped

Volume Inj. : 2 µl
 Signal #1 Phase : ZB-MR1 Signal #2 Phase: ZB-MR2
 Signal #1 Info : 30Mx0.32mmx 0.50µ Signal #2 Info : 30M x 0.32mm x 0.25µm

	Compound	RT#1	RT#2	Resp#1	Resp#2	ng/ml	ng/ml
43)	L9 AR-1268-3	0.000	8.548	0	26223	N.D.	6.296 #
44)	L9 AR-1268-4	9.963	8.836	527240	617874	364.847	370.739
45)	L9 AR-1268-5	10.352	9.122	228710	160309	20.298	12.284 #

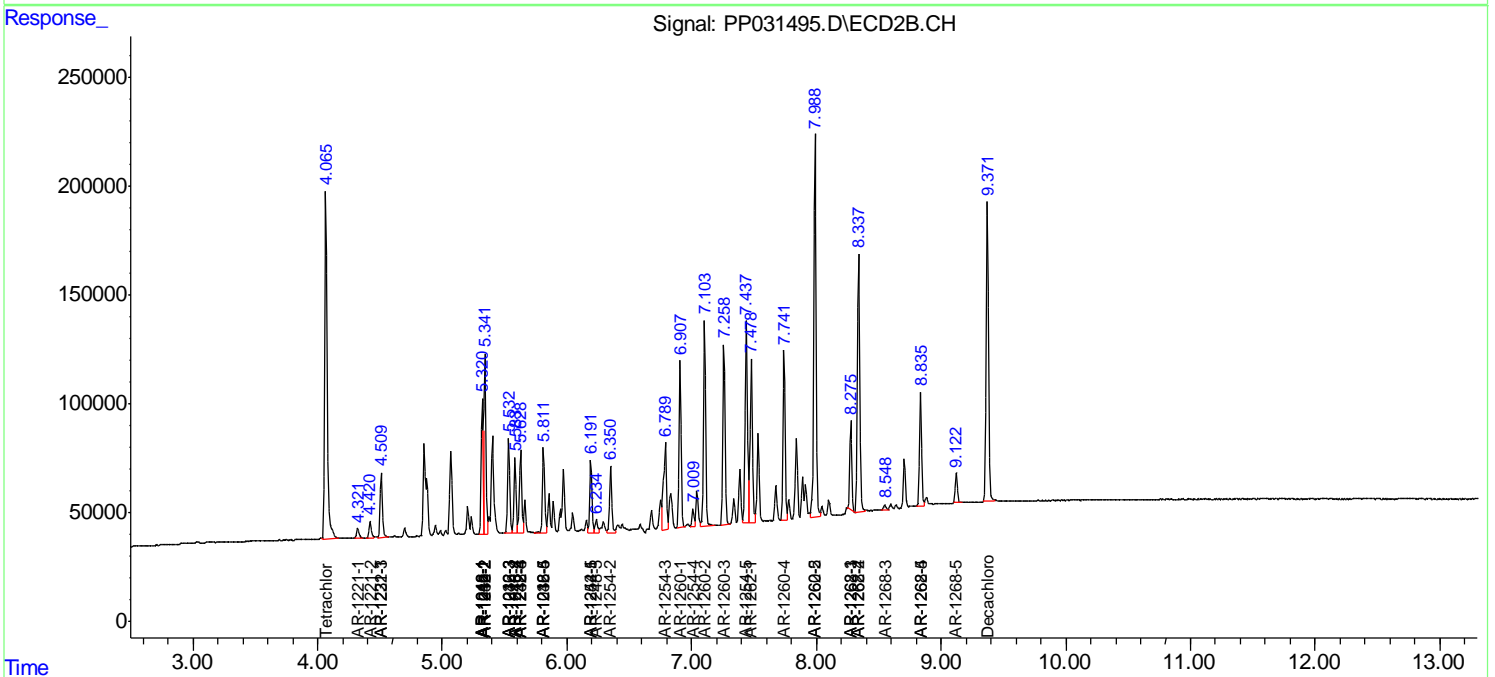
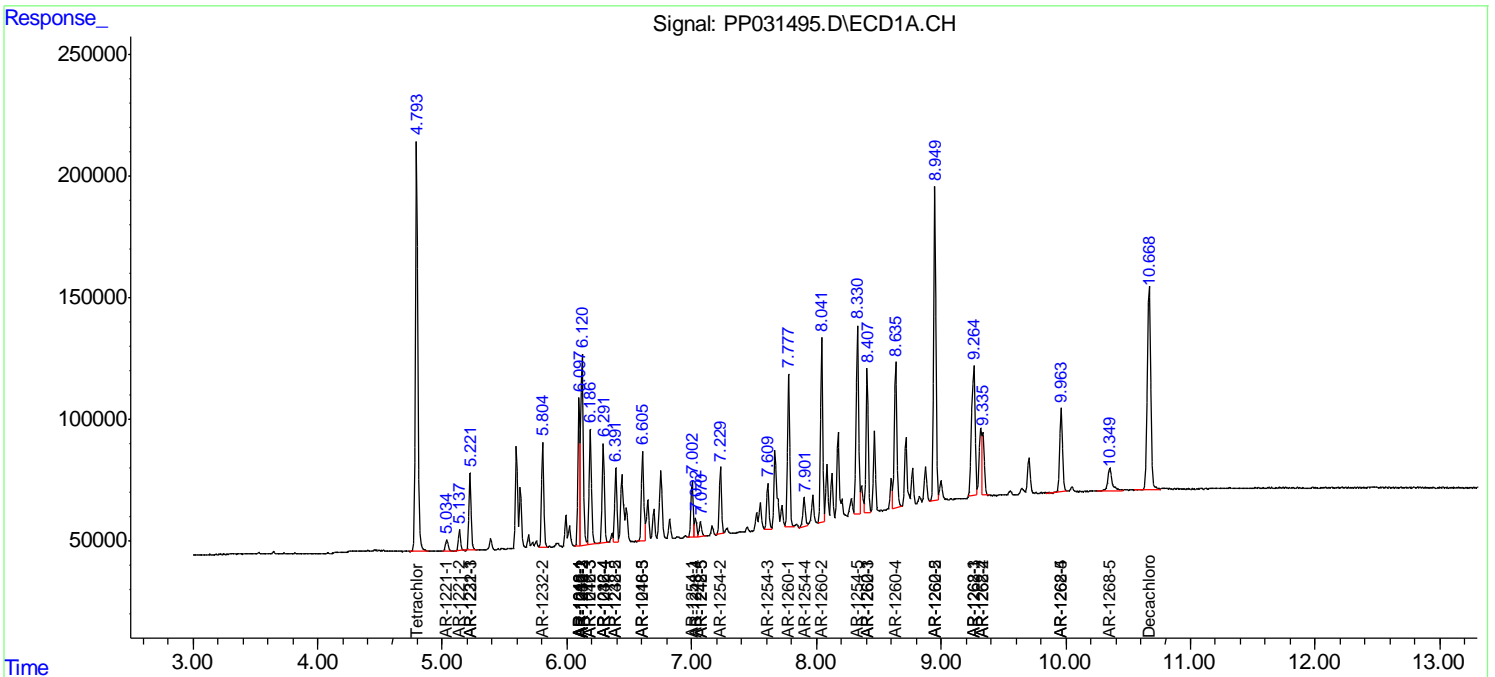
(f)=RT Delta > 1/2 Window (#)=Amounts differ by > 25% (m)=manual int.

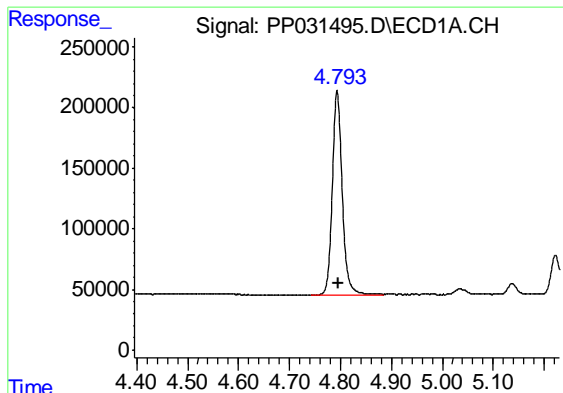
Data Path : Z:\pestpcbsrv\HPCHEM1\ECD_P\Data\PP112120\
 Data File : PP031495.D
 Signal(s) : Signal #1: ECD1A.CH Signal #2: ECD2B.CH
 Acq On : 21 Nov 2020 7:59
 Operator : DD\AJ
 Sample : AR1660CCC500
 Misc :
 ALS Vial : 3 Sample Multiplier: 1

Instrument :
 ECD_P
Client Sampled :
 AR1660CCC500

Integration File signal 1: autoint1.e
 Integration File signal 2: autoint2.e
 Quant Time: Nov 23 00:47:38 2020
 Quant Method : Z:\pestpcbsrv\HPCHEM1\ECD_P\methods\PP111720.M
 Quant Title : GC EXTRACTABLES
 QLast Update : Wed Nov 18 01:50:50 2020
 Response via : Initial Calibration
 Integrator: ChemStation 6890 Scale Mode: Small noise peaks clipped

Volume Inj. : 2 µl
 Signal #1 Phase : ZB-MR1 Signal #2 Phase: ZB-MR2
 Signal #1 Info : 30Mx0.32mmx 0.50µ Signal #2 Info : 30M x 0.32mm x 0.25µm

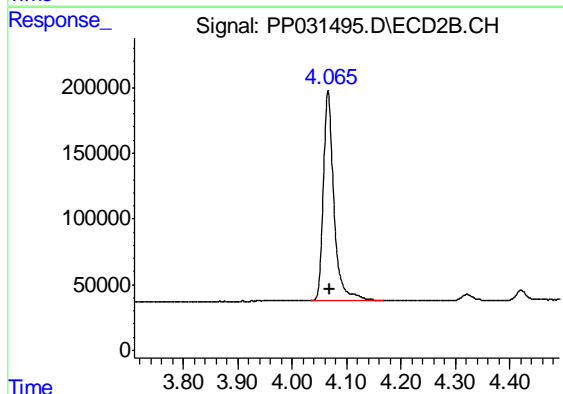




#1 Tetrachloro-m-xylene

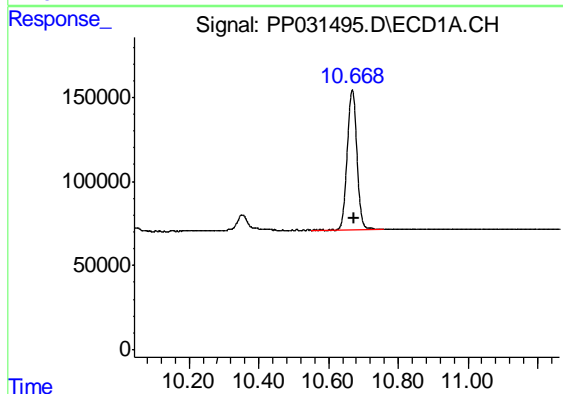
R.T.: 4.794 min
Delta R.T.: -0.002 min
Response: 2253517
Conc: 55.32 ng/ml

Instrument :
ECD_P
ClientSampleId :
AR1660CCC500



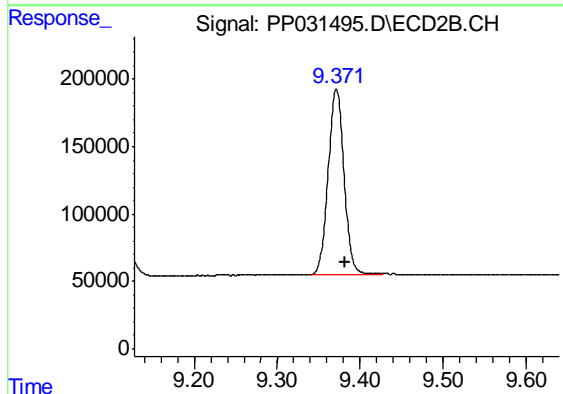
#1 Tetrachloro-m-xylene

R.T.: 4.066 min
Delta R.T.: -0.004 min
Response: 2162773
Conc: 51.73 ng/ml



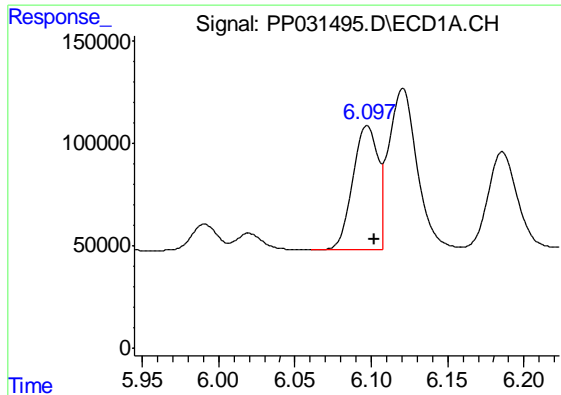
#2 Decachlorobiphenyl

R.T.: 10.668 min
Delta R.T.: -0.004 min
Response: 1608093
Conc: 52.36 ng/ml



#2 Decachlorobiphenyl

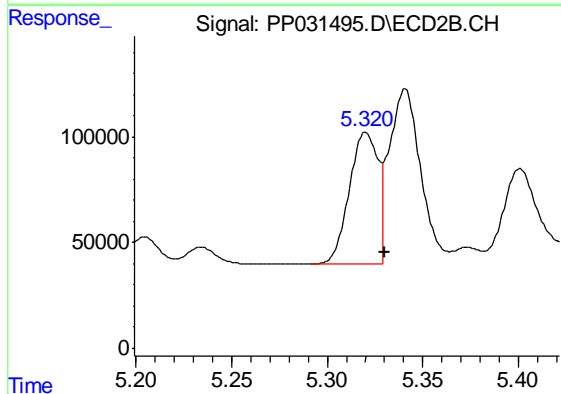
R.T.: 9.371 min
Delta R.T.: -0.011 min
Response: 1825804
Conc: 54.53 ng/ml



#3 AR-1016-1

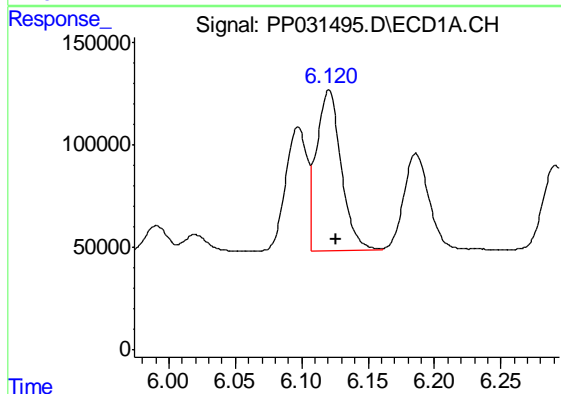
R.T.: 6.097 min
 Delta R.T.: -0.005 min
 Response: 688302
 Conc: 547.05 ng/ml

Instrument :
 ECD_P
 ClientSampleId :
 AR1660CCC500



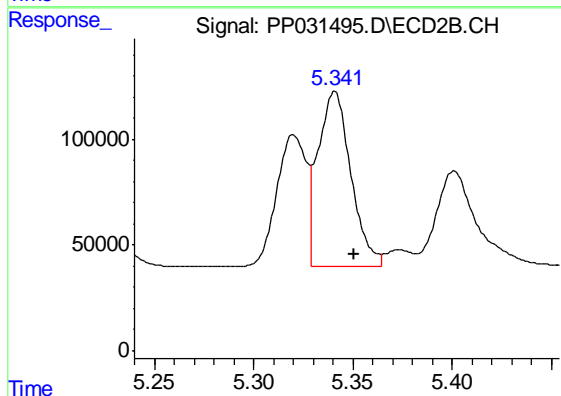
#3 AR-1016-1

R.T.: 5.320 min
 Delta R.T.: -0.010 min
 Response: 643419
 Conc: 505.16 ng/ml



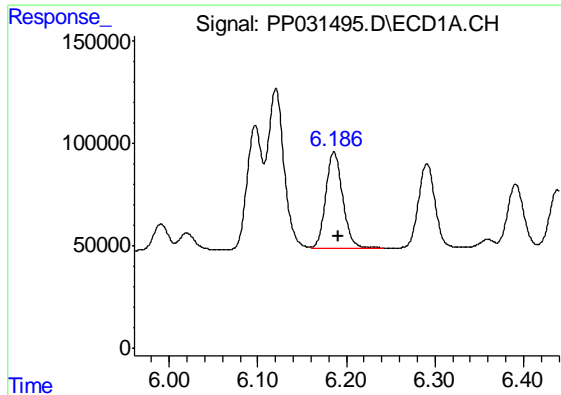
#4 AR-1016-2

R.T.: 6.121 min
 Delta R.T.: -0.005 min
 Response: 1014615
 Conc: 539.53 ng/ml



#4 AR-1016-2

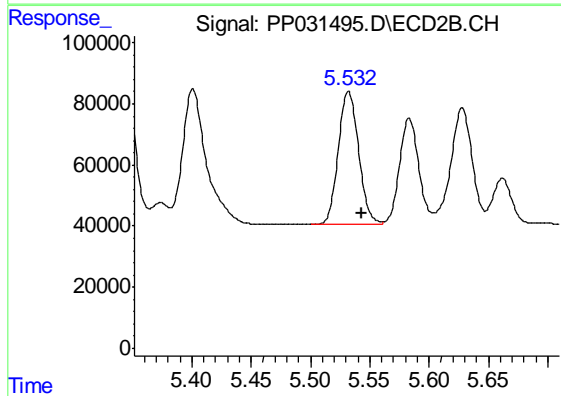
R.T.: 5.341 min
 Delta R.T.: -0.010 min
 Response: 956376
 Conc: 510.25 ng/ml



#5 AR-1016-3

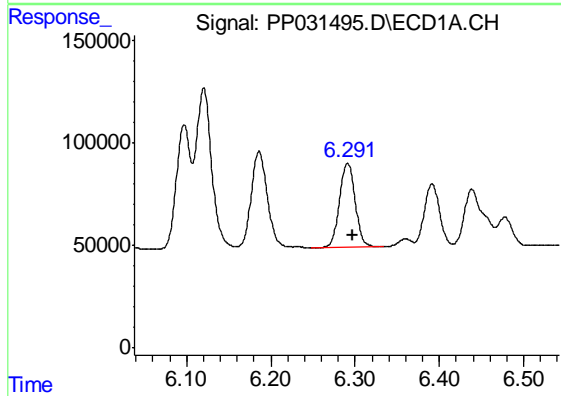
R.T.: 6.186 min
 Delta R.T.: -0.005 min
 Response: 626418
 Conc: 547.26 ng/ml

Instrument :
 ECD_P
 ClientSampleId :
 AR1660CCC500



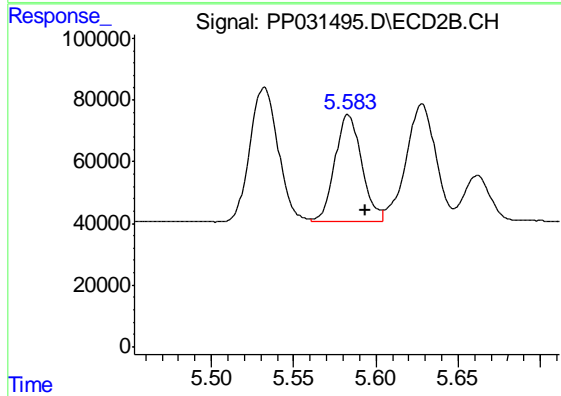
#5 AR-1016-3

R.T.: 5.532 min
 Delta R.T.: -0.011 min
 Response: 523447
 Conc: 523.88 ng/ml



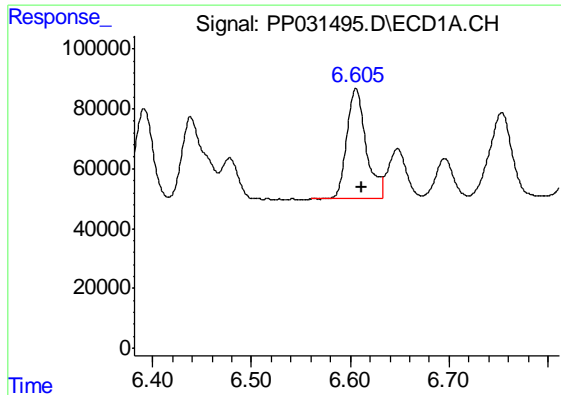
#6 AR-1016-4

R.T.: 6.291 min
 Delta R.T.: -0.005 min
 Response: 526056
 Conc: 546.94 ng/ml



#6 AR-1016-4

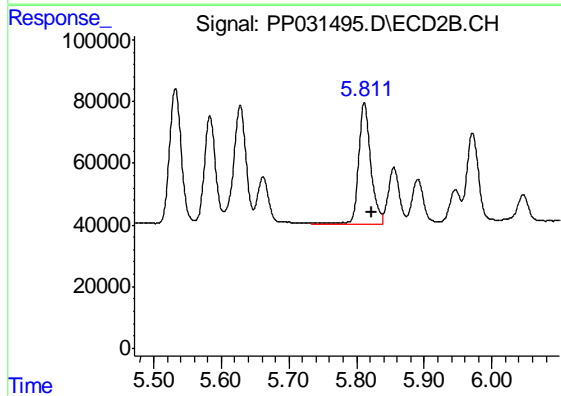
R.T.: 5.583 min
 Delta R.T.: -0.011 min
 Response: 397159
 Conc: 539.31 ng/ml



#7 AR-1016-5

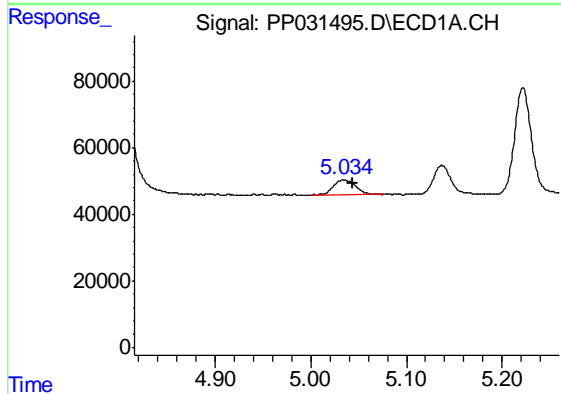
R.T.: 6.606 min
 Delta R.T.: -0.006 min
 Response: 498351
 Conc: 568.59 ng/ml

Instrument :
 ECD_P
 ClientSampleId :
 AR1660CCC500



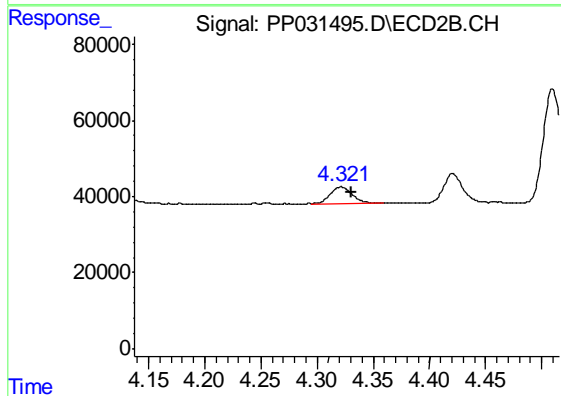
#7 AR-1016-5

R.T.: 5.811 min
 Delta R.T.: -0.011 min
 Response: 489066
 Conc: 503.13 ng/ml



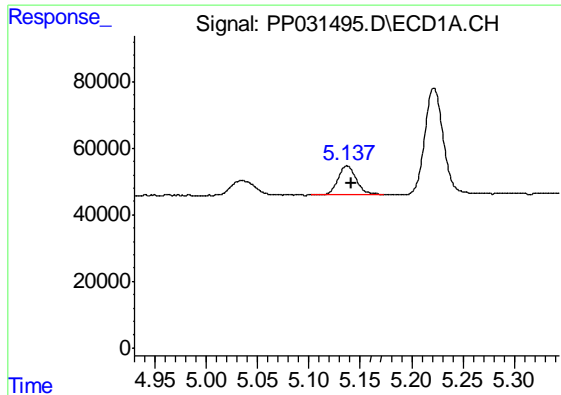
#8 AR-1221-1

R.T.: 5.035 min
 Delta R.T.: -0.009 min
 Response: 72518
 Conc: 154.47 ng/ml



#8 AR-1221-1

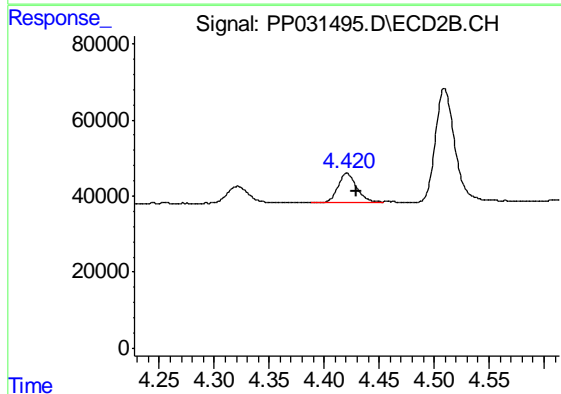
R.T.: 4.322 min
 Delta R.T.: -0.009 min
 Response: 60216
 Conc: 131.74 ng/ml



#9 AR-1221-2

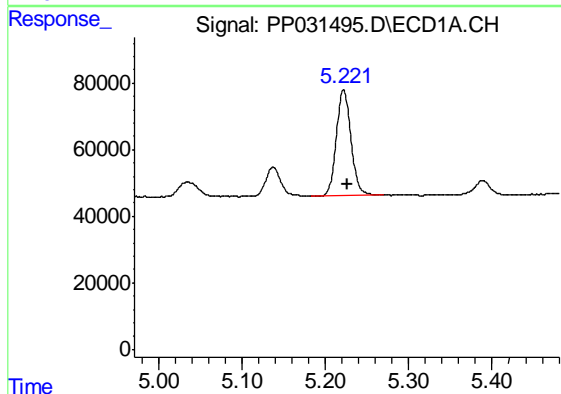
R.T.: 5.137 min
Delta R.T.: -0.004 min
Response: 104744
Conc: 301.23 ng/ml

Instrument :
ECD_P
ClientSampleId :
AR1660CCC500



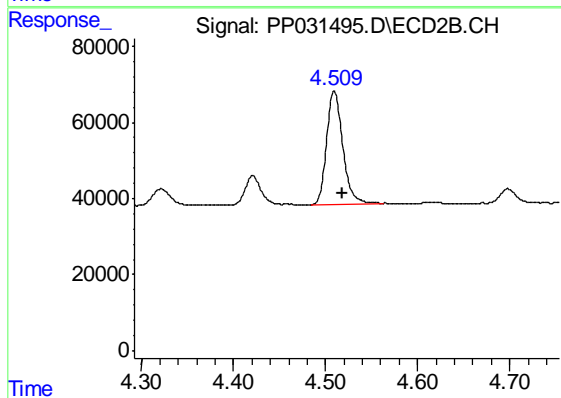
#9 AR-1221-2

R.T.: 4.421 min
Delta R.T.: -0.009 min
Response: 93482
Conc: 264.73 ng/ml



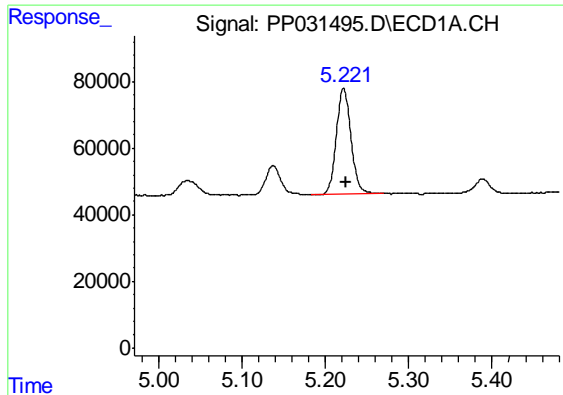
#10 AR-1221-3

R.T.: 5.222 min
Delta R.T.: -0.004 min
Response: 388388
Conc: 364.31 ng/ml



#10 AR-1221-3

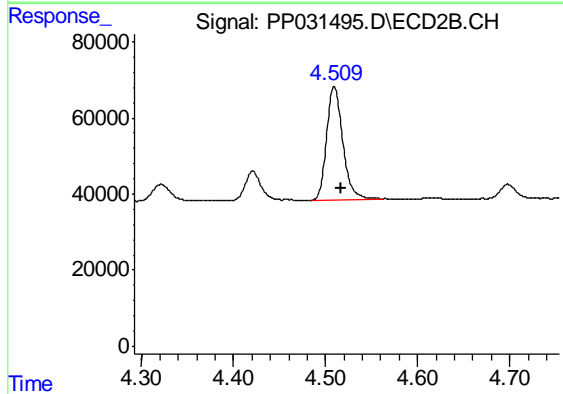
R.T.: 4.509 min
Delta R.T.: -0.009 min
Response: 362453
Conc: 334.80 ng/ml



#11 AR-1232-1

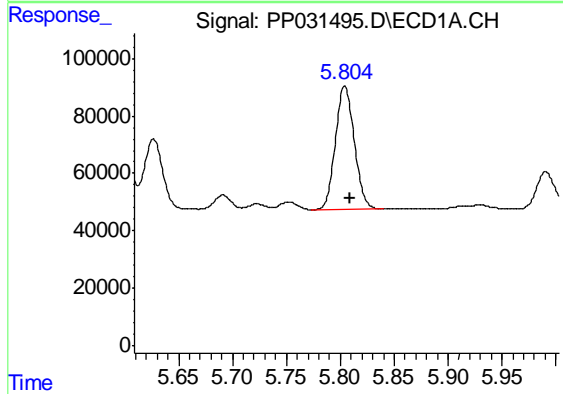
R.T.: 5.222 min
 Delta R.T.: -0.004 min
 Response: 388388
 Conc: 449.00 ng/ml

Instrument :
 ECD_P
 ClientSampleId :
 AR1660CCC500



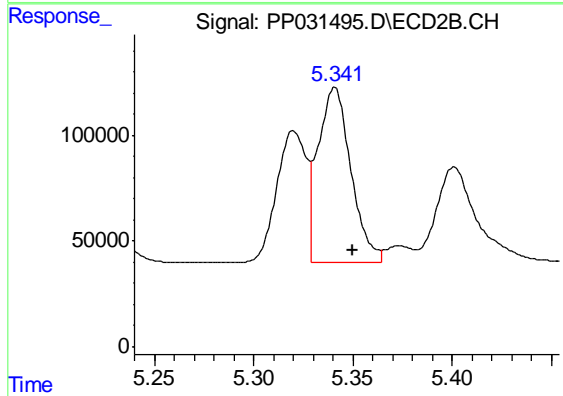
#11 AR-1232-1

R.T.: 4.509 min
 Delta R.T.: -0.008 min
 Response: 362453
 Conc: 421.52 ng/ml



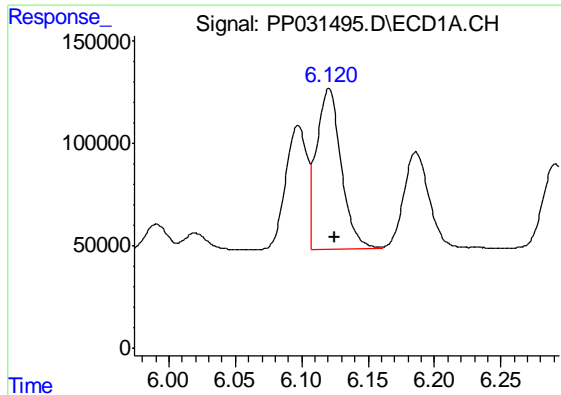
#12 AR-1232-2

R.T.: 5.804 min
 Delta R.T.: -0.005 min
 Response: 527106
 Conc: 1205.48 ng/ml



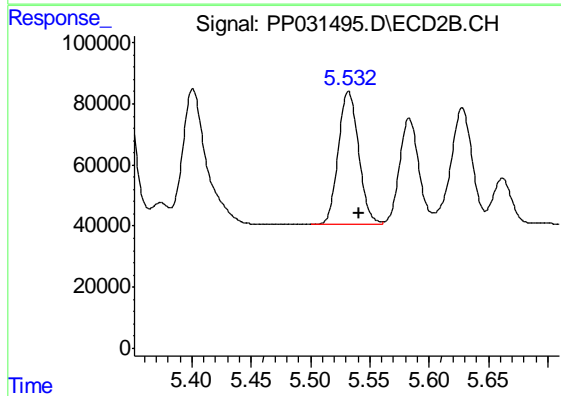
#12 AR-1232-2

R.T.: 5.341 min
 Delta R.T.: -0.009 min
 Response: 956376
 Conc: 1162.43 ng/ml

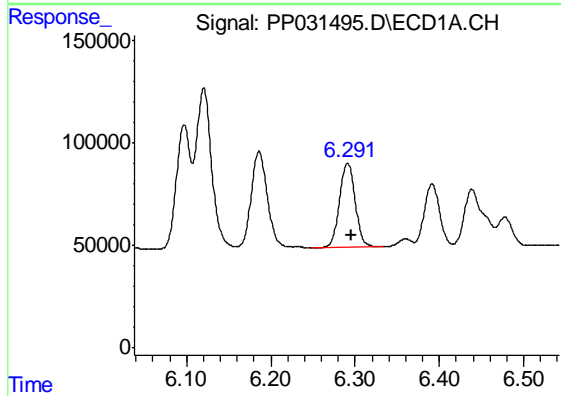


#13 AR-1232-3
 R.T.: 6.121 min
 Delta R.T.: -0.004 min
 Response: 1014615
 Conc: 1220.29 ng/ml

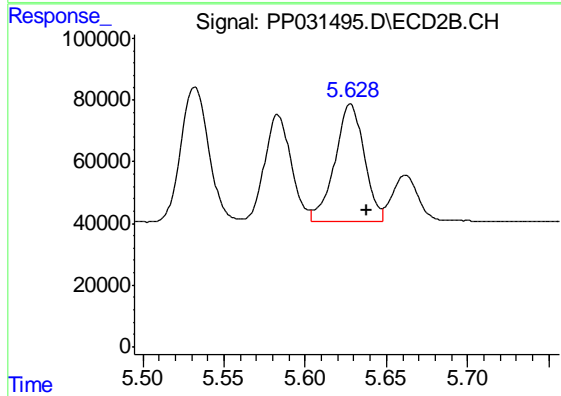
Instrument :
 ECD_P
 ClientSampleId :
 AR1660CCC500



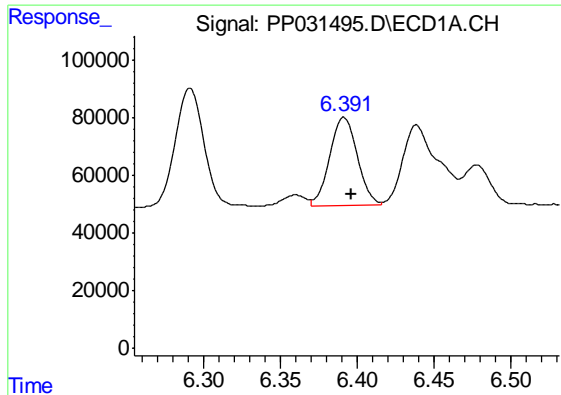
#13 AR-1232-3
 R.T.: 5.532 min
 Delta R.T.: -0.009 min
 Response: 523447
 Conc: 1207.85 ng/ml



#14 AR-1232-4
 R.T.: 6.291 min
 Delta R.T.: -0.005 min
 Response: 526056
 Conc: 1251.30 ng/ml

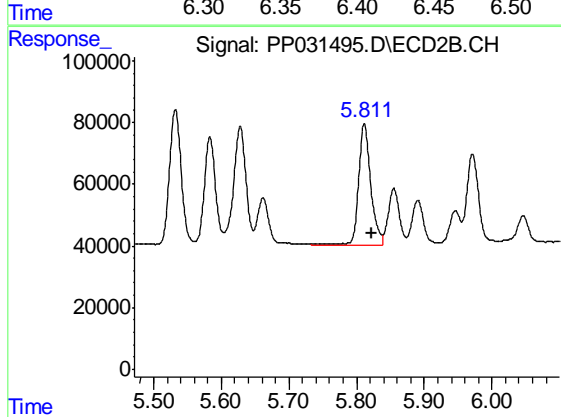


#14 AR-1232-4
 R.T.: 5.628 min
 Delta R.T.: -0.010 min
 Response: 485205
 Conc: 1370.66 ng/ml

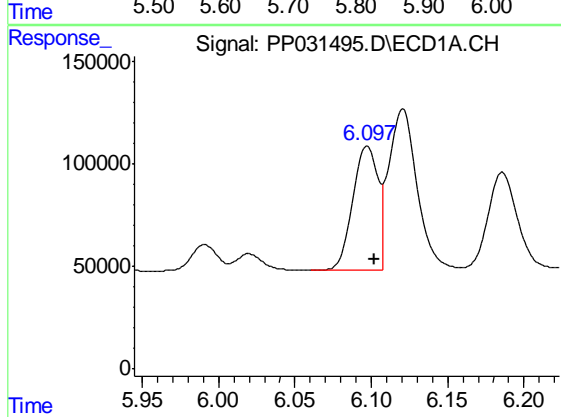


#15 AR-1232-5
 R.T.: 6.391 min
 Delta R.T.: -0.005 min
 Response: 384369
 Conc: 1517.95 ng/ml

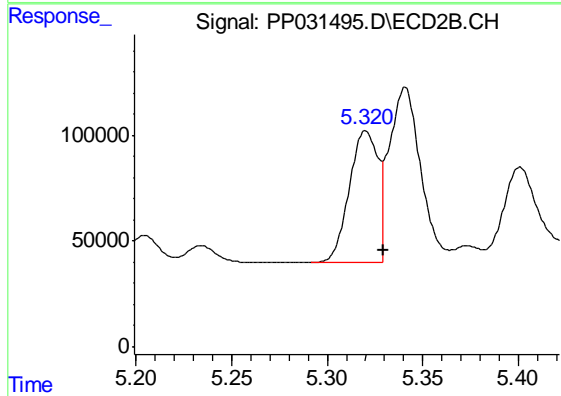
Instrument :
 ECD_P
 ClientSampleId :
 AR1660CCC500



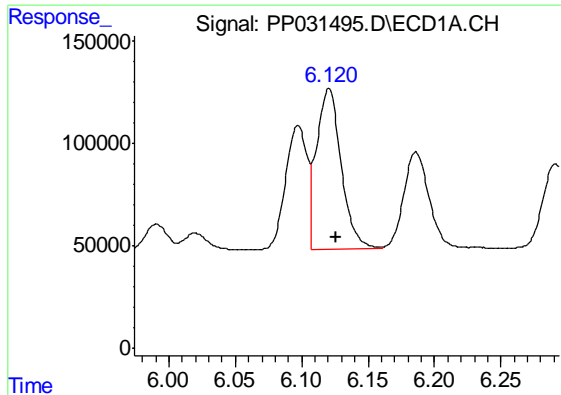
#15 AR-1232-5
 R.T.: 5.811 min
 Delta R.T.: -0.011 min
 Response: 489066
 Conc: 1228.85 ng/ml



#16 AR-1242-1
 R.T.: 6.097 min
 Delta R.T.: -0.005 min
 Response: 688302
 Conc: 718.17 ng/ml



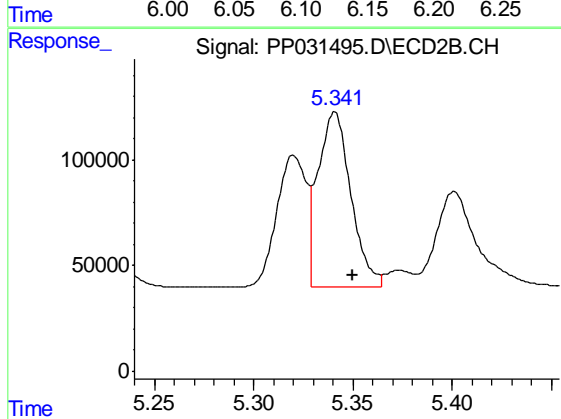
#16 AR-1242-1
 R.T.: 5.320 min
 Delta R.T.: -0.009 min
 Response: 643419
 Conc: 672.49 ng/ml



#17 AR-1242-2

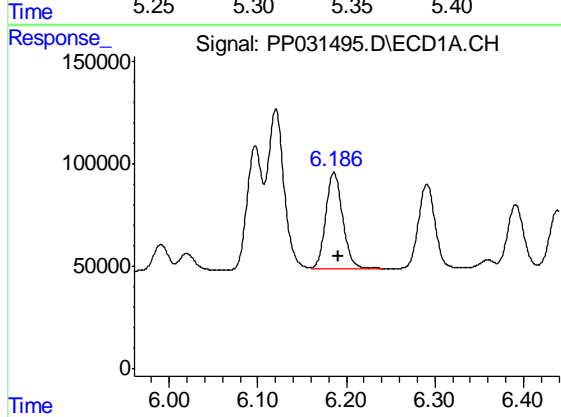
R.T.: 6.121 min
Delta R.T.: -0.005 min
Response: 1014615
Conc: 714.06 ng/ml

Instrument :
ECD_P
ClientSampleId :
AR1660CCC500



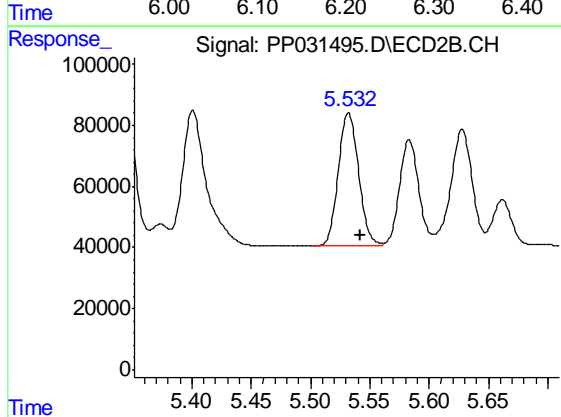
#17 AR-1242-2

R.T.: 5.341 min
Delta R.T.: -0.009 min
Response: 956376
Conc: 679.74 ng/ml



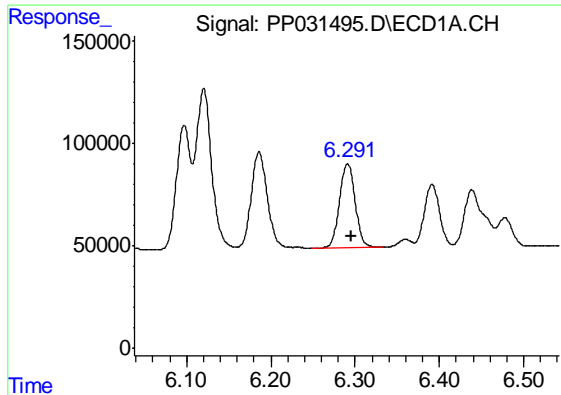
#18 AR-1242-3

R.T.: 6.186 min
Delta R.T.: -0.005 min
Response: 626418
Conc: 705.52 ng/ml



#18 AR-1242-3

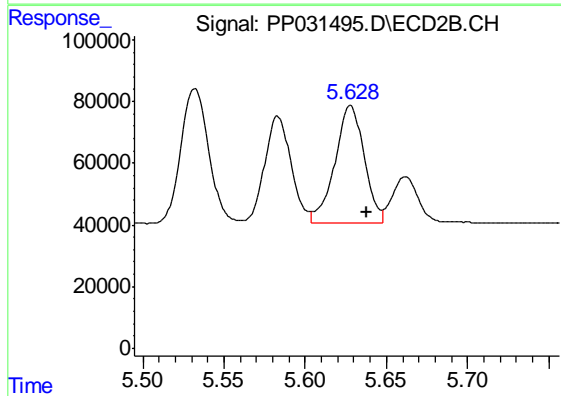
R.T.: 5.532 min
Delta R.T.: -0.010 min
Response: 523447
Conc: 676.84 ng/ml



#19 AR-1242-4

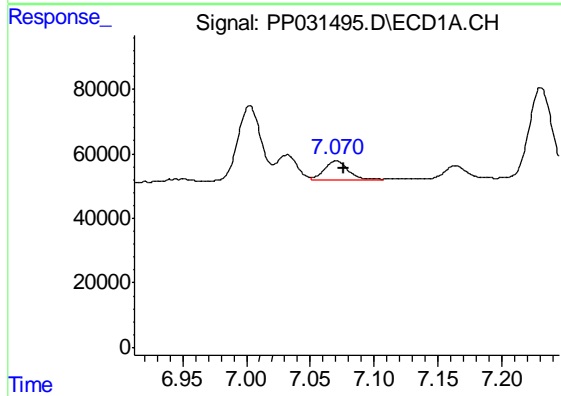
R.T.: 6.291 min
 Delta R.T.: -0.005 min
 Response: 526056
 Conc: 706.73 ng/ml

Instrument :
 ECD_P
 ClientSampleId :
 AR1660CCC500



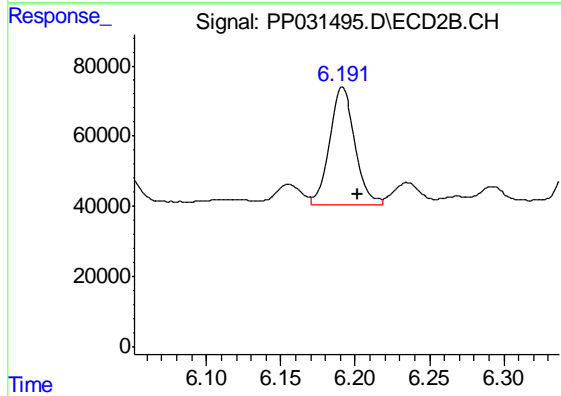
#19 AR-1242-4

R.T.: 5.628 min
 Delta R.T.: -0.010 min
 Response: 485205
 Conc: 687.66 ng/ml



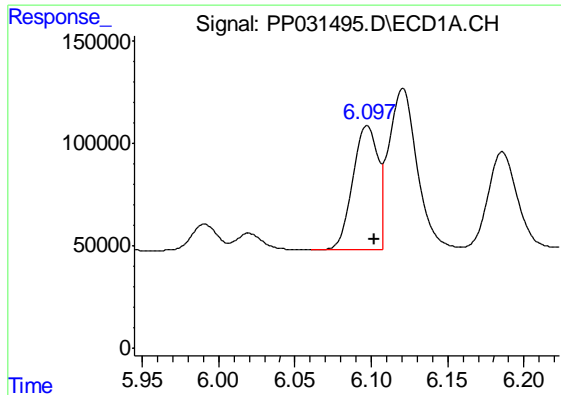
#20 AR-1242-5

R.T.: 7.070 min
 Delta R.T.: -0.006 min
 Response: 75084
 Conc: 101.81 ng/ml



#20 AR-1242-5

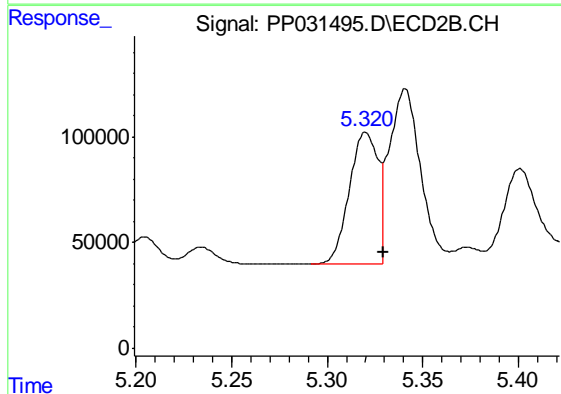
R.T.: 6.191 min
 Delta R.T.: -0.011 min
 Response: 399931
 Conc: 452.52 ng/ml



#21 AR-1248-1

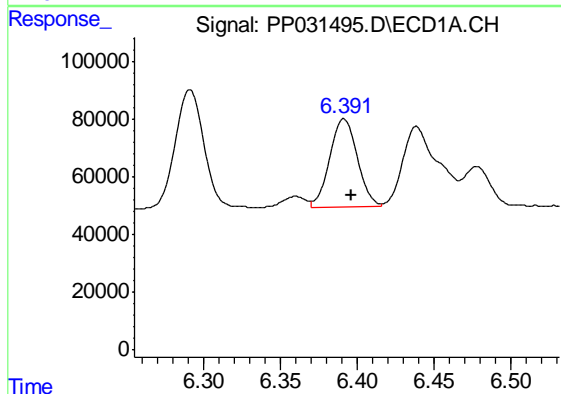
R.T.: 6.097 min
 Delta R.T.: -0.004 min
 Response: 688302
 Conc: 925.19 ng/ml

Instrument :
 ECD_P
 ClientSampleId :
 AR1660CCC500



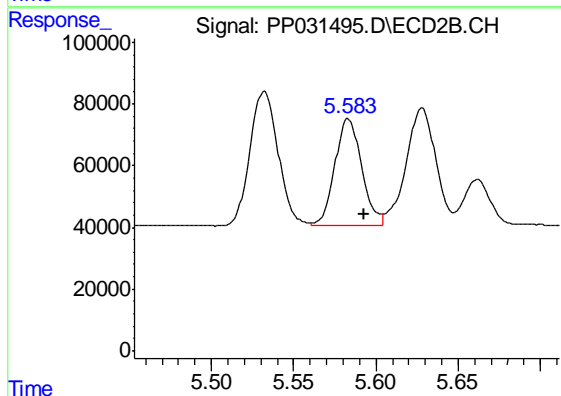
#21 AR-1248-1

R.T.: 5.320 min
 Delta R.T.: -0.009 min
 Response: 643419
 Conc: 856.68 ng/ml



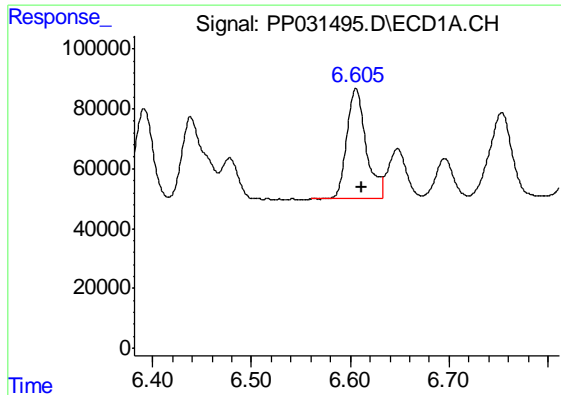
#22 AR-1248-2

R.T.: 6.391 min
 Delta R.T.: -0.005 min
 Response: 384369
 Conc: 408.88 ng/ml



#22 AR-1248-2

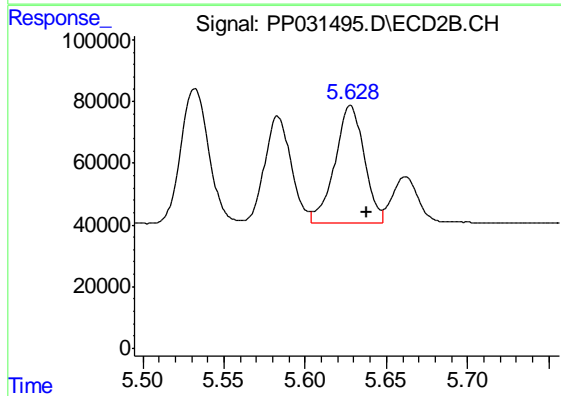
R.T.: 5.583 min
 Delta R.T.: -0.010 min
 Response: 397159
 Conc: 394.84 ng/ml



#23 AR-1248-3

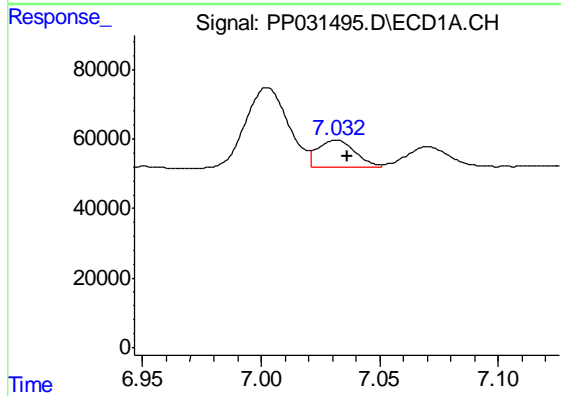
R.T.: 6.606 min
 Delta R.T.: -0.005 min
 Response: 498351
 Conc: 425.36 ng/ml

Instrument :
 ECD_P
 ClientSampleId :
 AR1660CCC500



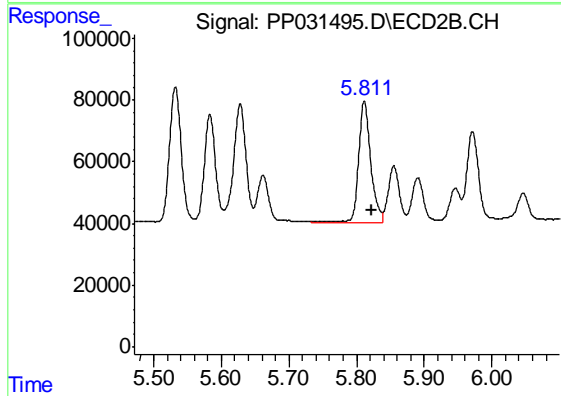
#23 AR-1248-3

R.T.: 5.628 min
 Delta R.T.: -0.010 min
 Response: 485205
 Conc: 453.52 ng/ml



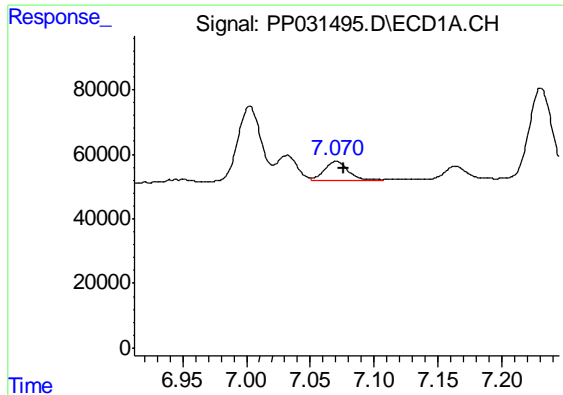
#24 AR-1248-4

R.T.: 7.032 min
 Delta R.T.: -0.005 min
 Response: 87954
 Conc: 69.65 ng/ml



#24 AR-1248-4

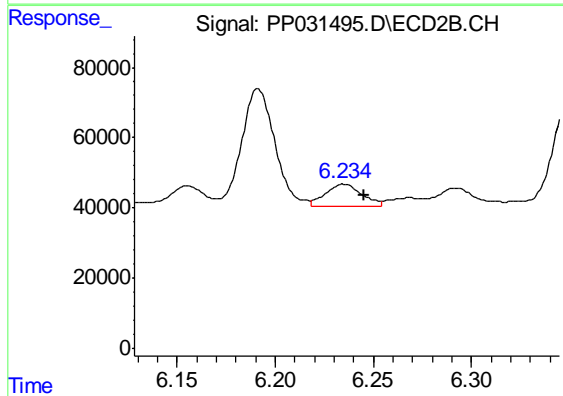
R.T.: 5.811 min
 Delta R.T.: -0.011 min
 Response: 489066
 Conc: 382.36 ng/ml



#25 AR-1248-5

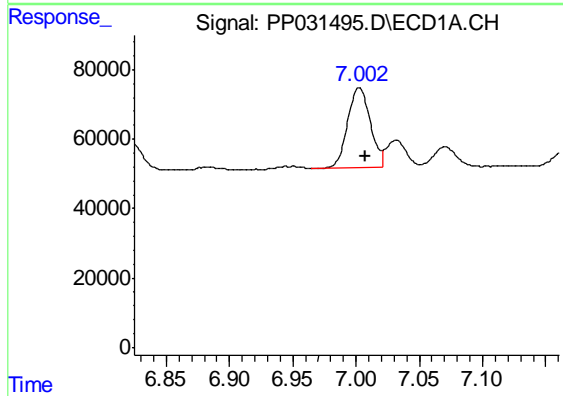
R.T.: 7.070 min
 Delta R.T.: -0.006 min
 Response: 75084
 Conc: 59.77 ng/ml

Instrument :
 ECD_P
 ClientSampleId :
 AR1660CCC500



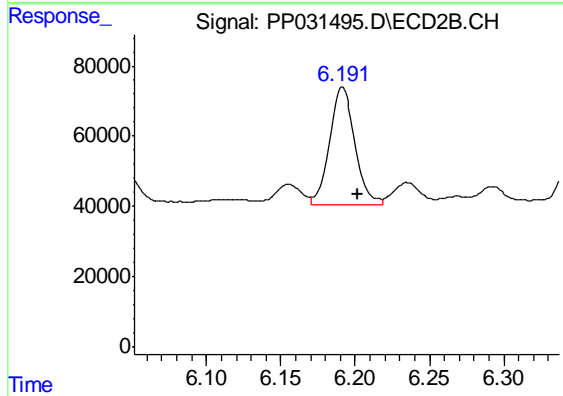
#25 AR-1248-5

R.T.: 6.235 min
 Delta R.T.: -0.010 min
 Response: 84572
 Conc: 67.33 ng/ml



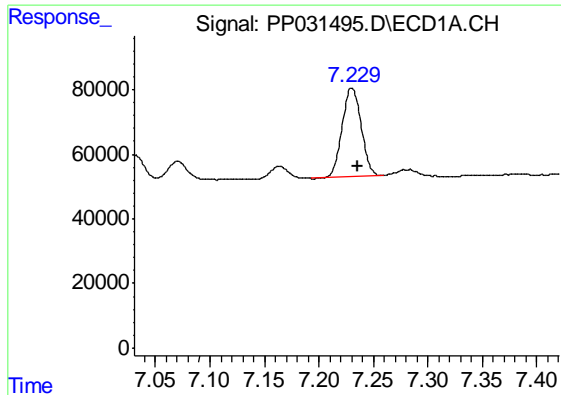
#26 AR-1254-1

R.T.: 7.003 min
 Delta R.T.: -0.005 min
 Response: 288996
 Conc: 224.99 ng/ml



#26 AR-1254-1

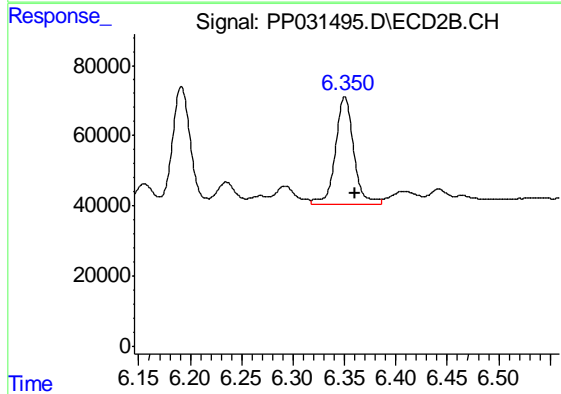
R.T.: 6.191 min
 Delta R.T.: -0.010 min
 Response: 399931
 Conc: 210.16 ng/ml



#27 AR-1254-2

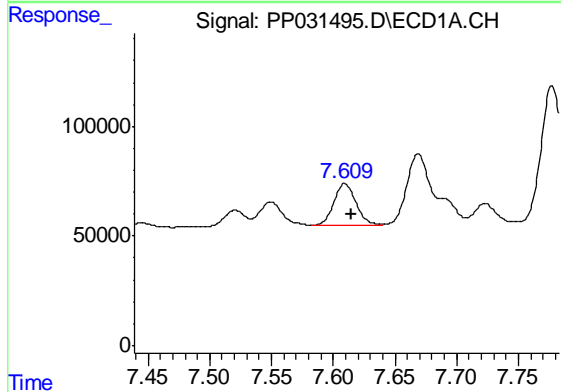
R.T.: 7.230 min
 Delta R.T.: -0.006 min
 Response: 335621
 Conc: 173.85 ng/ml

Instrument :
 ECD_P
 ClientSampleId :
 AR1660CCC500



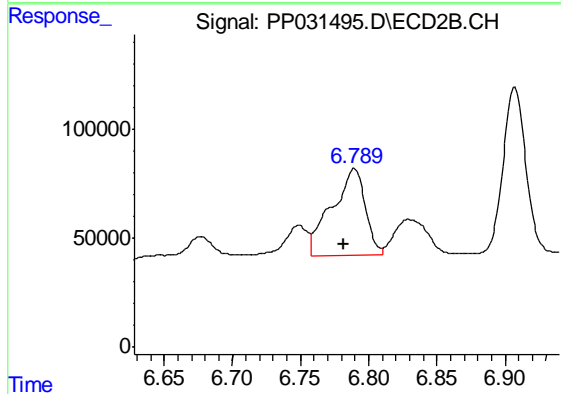
#27 AR-1254-2

R.T.: 6.350 min
 Delta R.T.: -0.011 min
 Response: 389158
 Conc: 237.74 ng/ml



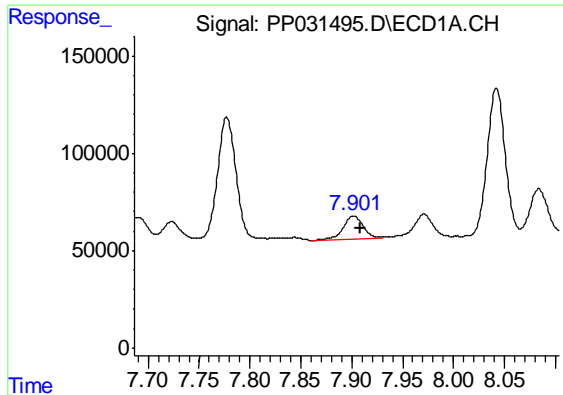
#28 AR-1254-3

R.T.: 7.609 min
 Delta R.T.: -0.005 min
 Response: 240284
 Conc: 110.84 ng/ml



#28 AR-1254-3

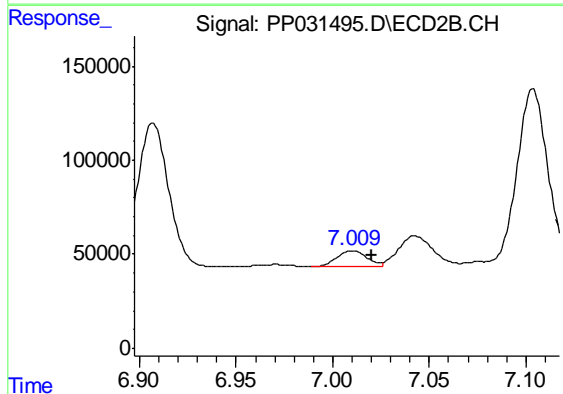
R.T.: 6.789 min
 Delta R.T.: 0.008 min
 Response: 687091
 Conc: 251.67 ng/ml



#29 AR-1254-4

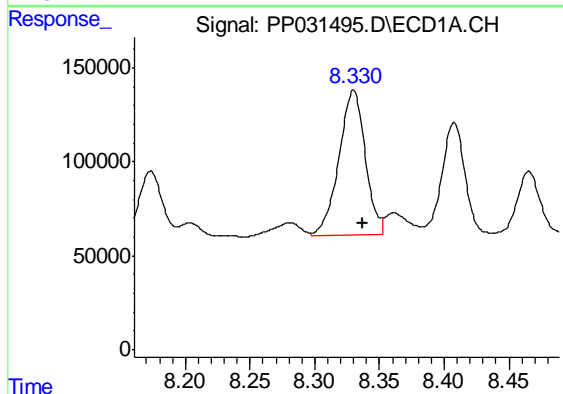
R.T.: 7.902 min
 Delta R.T.: -0.007 min
 Response: 167237
 Conc: 110.76 ng/ml

Instrument :
 ECD_P
 ClientSampleId :
 AR1660CCC500



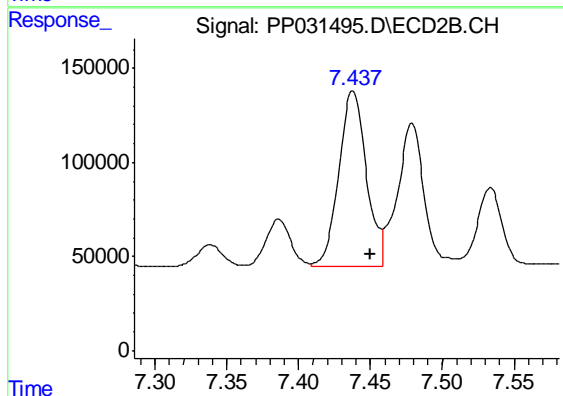
#29 AR-1254-4

R.T.: 7.010 min
 Delta R.T.: -0.011 min
 Response: 93086
 Conc: 59.90 ng/ml



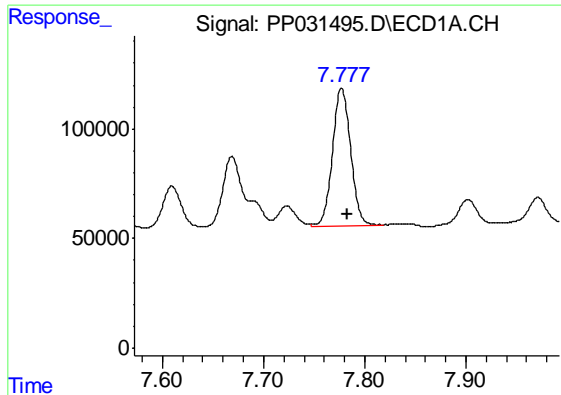
#30 AR-1254-5

R.T.: 8.330 min
 Delta R.T.: -0.007 min
 Response: 1089503
 Conc: 666.46 ng/ml



#30 AR-1254-5

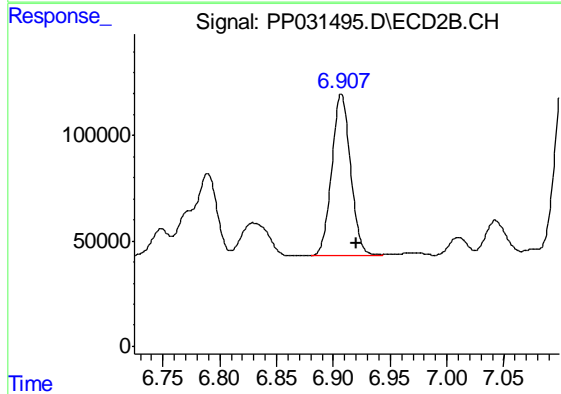
R.T.: 7.438 min
 Delta R.T.: -0.012 min
 Response: 1236820
 Conc: 511.55 ng/ml



#31 AR-1260-1

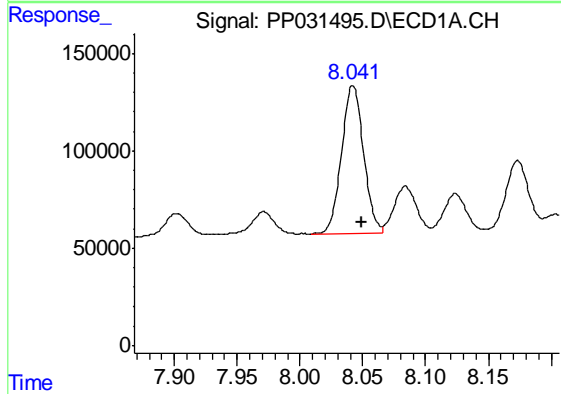
R.T.: 7.777 min
 Delta R.T.: -0.006 min
 Response: 780412
 Conc: 558.79 ng/ml

Instrument :
 ECD_P
 ClientSampleId :
 AR1660CCC500



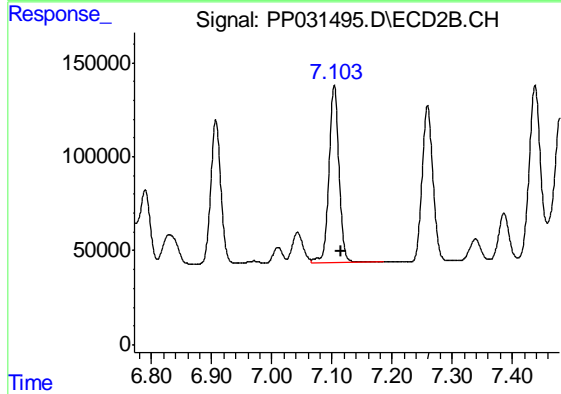
#31 AR-1260-1

R.T.: 6.907 min
 Delta R.T.: -0.013 min
 Response: 881784
 Conc: 527.73 ng/ml



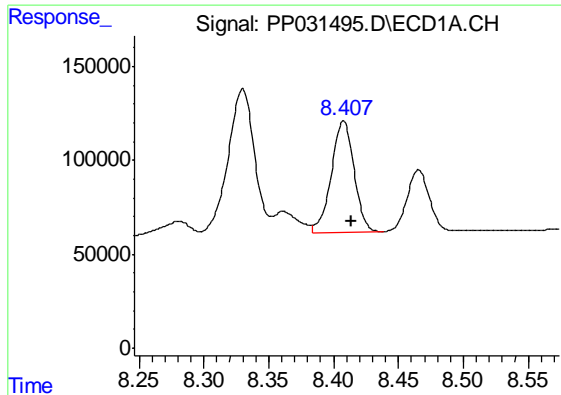
#32 AR-1260-2

R.T.: 8.042 min
 Delta R.T.: -0.007 min
 Response: 921340
 Conc: 553.67 ng/ml



#32 AR-1260-2

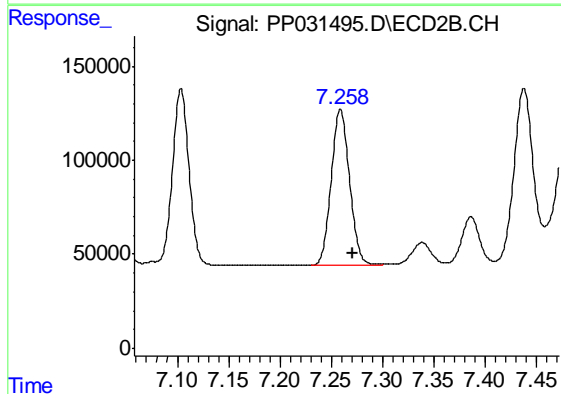
R.T.: 7.104 min
 Delta R.T.: -0.013 min
 Response: 1094612
 Conc: 537.88 ng/ml



#33 AR-1260-3

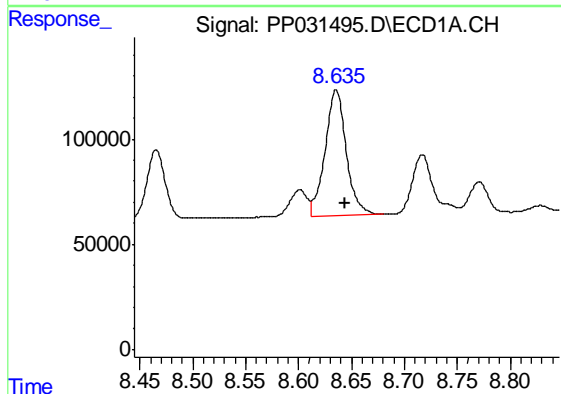
R.T.: 8.408 min
 Delta R.T.: -0.006 min
 Response: 723261
 Conc: 566.16 ng/ml

Instrument :
 ECD_P
 ClientSampleId :
 AR1660CCC500



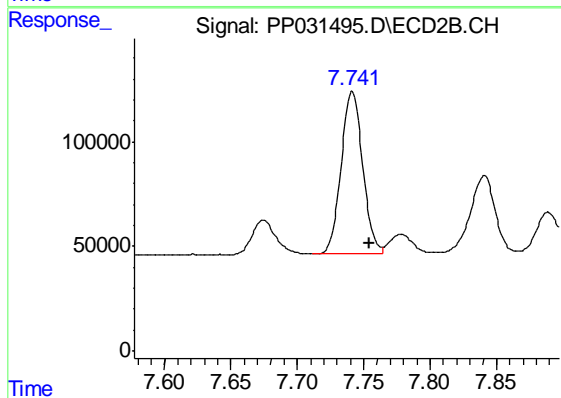
#33 AR-1260-3

R.T.: 7.259 min
 Delta R.T.: -0.012 min
 Response: 1029320
 Conc: 533.49 ng/ml



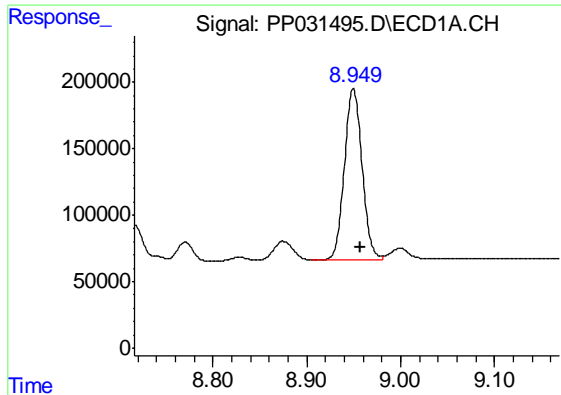
#34 AR-1260-4

R.T.: 8.636 min
 Delta R.T.: -0.008 min
 Response: 829742
 Conc: 542.76 ng/ml



#34 AR-1260-4

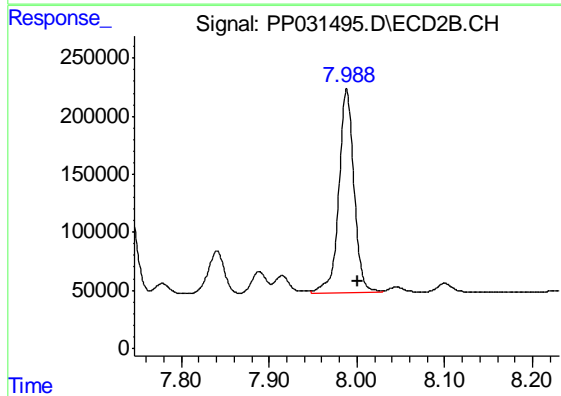
R.T.: 7.741 min
 Delta R.T.: -0.013 min
 Response: 877061
 Conc: 543.85 ng/ml



#35 AR-1260-5

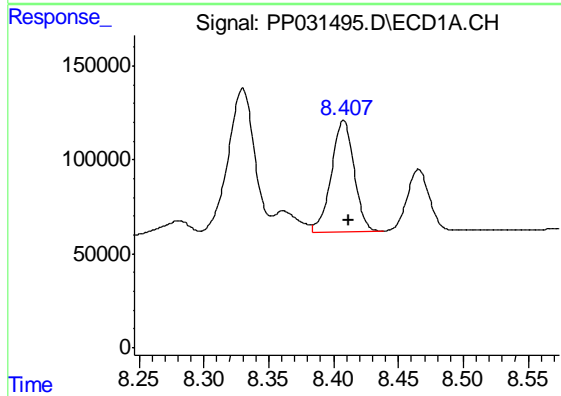
R.T.: 8.950 min
 Delta R.T.: -0.007 min
 Response: 1683602
 Conc: 534.21 ng/ml

Instrument :
 ECD_P
 ClientSampleId :
 AR1660CCC500



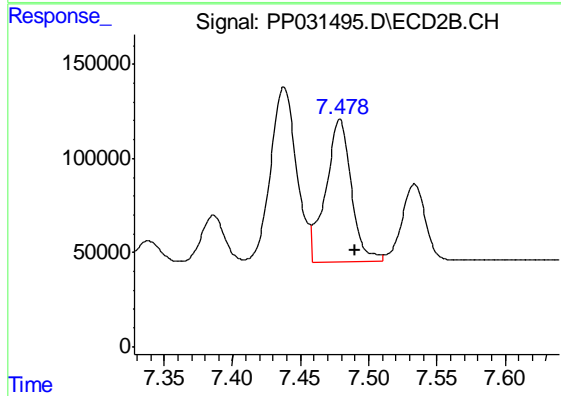
#35 AR-1260-5

R.T.: 7.988 min
 Delta R.T.: -0.013 min
 Response: 2120434
 Conc: 536.72 ng/ml



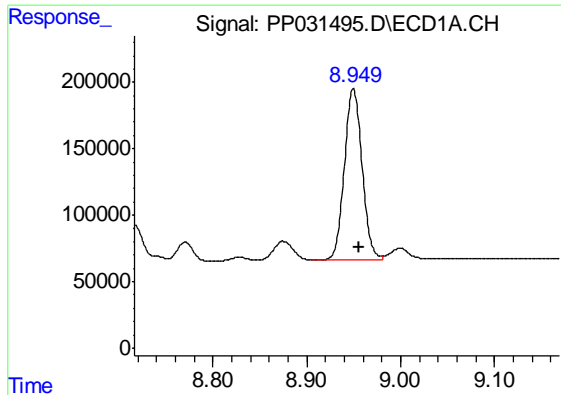
#36 AR-1262-1

R.T.: 8.408 min
 Delta R.T.: -0.004 min
 Response: 723261
 Conc: 400.54 ng/ml



#36 AR-1262-1

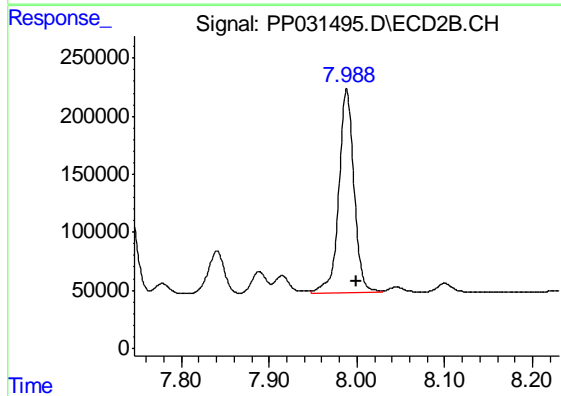
R.T.: 7.479 min
 Delta R.T.: -0.011 min
 Response: 987068
 Conc: 433.12 ng/ml



#37 AR-1262-2

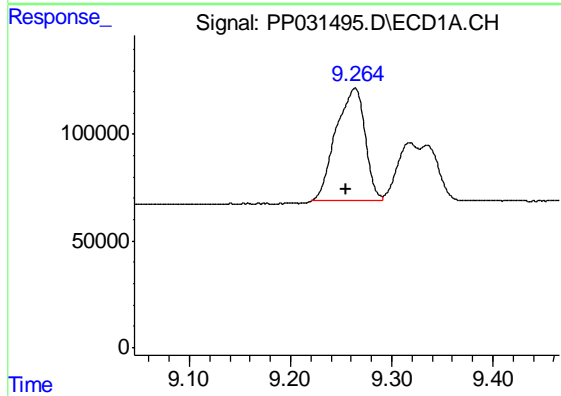
R.T.: 8.950 min
 Delta R.T.: -0.006 min
 Response: 1683602
 Conc: 498.88 ng/ml

Instrument :
 ECD_P
 ClientSampleId :
 AR1660CCC500



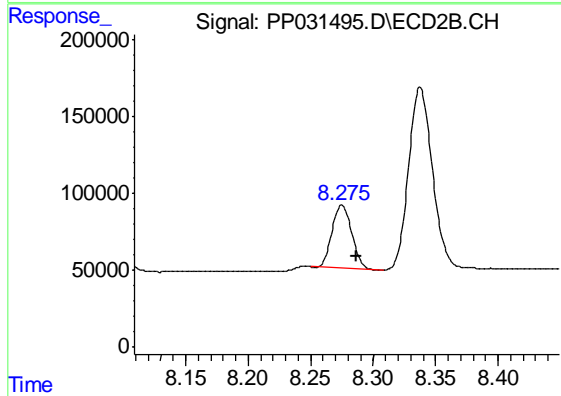
#37 AR-1262-2

R.T.: 7.988 min
 Delta R.T.: -0.011 min
 Response: 2120434
 Conc: 515.56 ng/ml



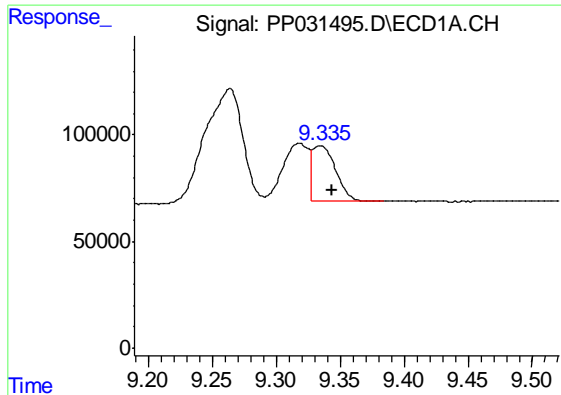
#38 AR-1262-3

R.T.: 9.264 min
 Delta R.T.: 0.008 min
 Response: 1065336
 Conc: 455.80 ng/ml



#38 AR-1262-3

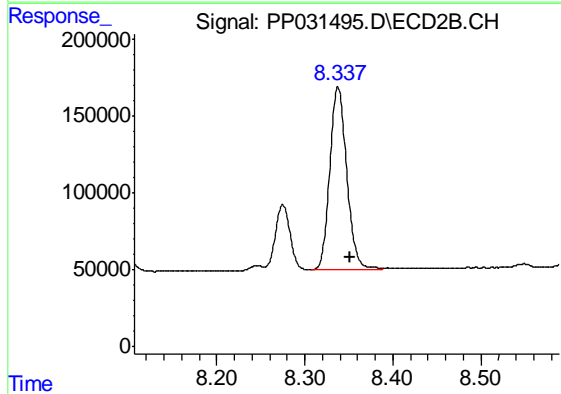
R.T.: 8.275 min
 Delta R.T.: -0.012 min
 Response: 453657
 Conc: 284.63 ng/ml



#39 AR-1262-4

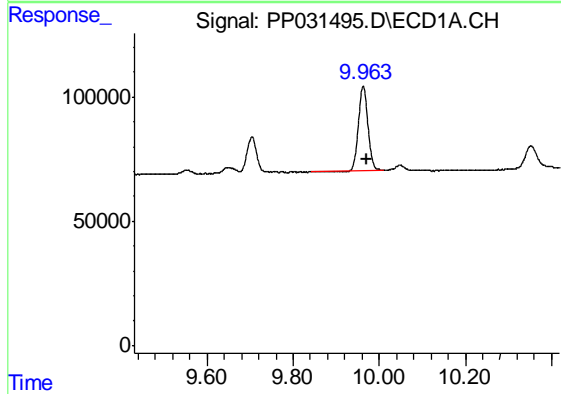
R.T.: 9.335 min
 Delta R.T.: -0.008 min
 Response: 332100
 Conc: 176.49 ng/ml

Instrument :
 ECD_P
 ClientSampleId :
 AR1660CCC500



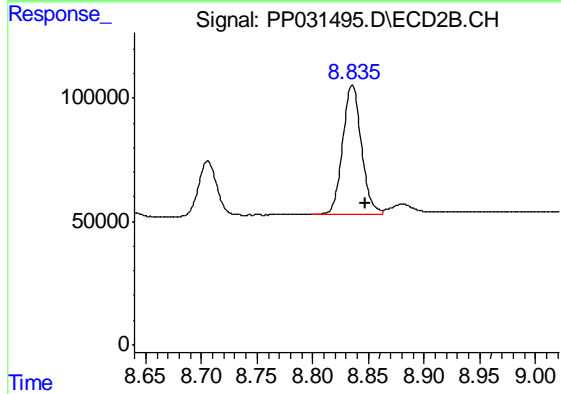
#39 AR-1262-4

R.T.: 8.338 min
 Delta R.T.: -0.013 min
 Response: 1588669
 Conc: 507.43 ng/ml



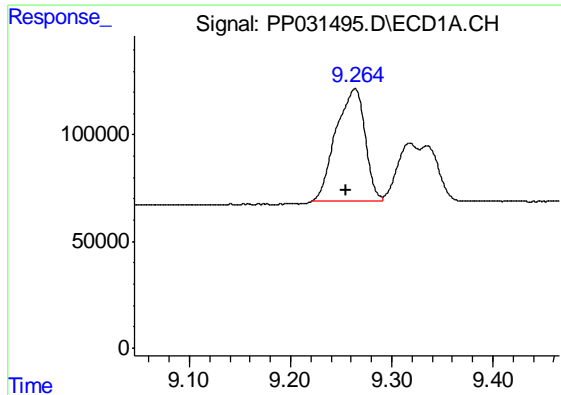
#40 AR-1262-5

R.T.: 9.963 min
 Delta R.T.: -0.008 min
 Response: 527240
 Conc: 413.83 ng/ml



#40 AR-1262-5

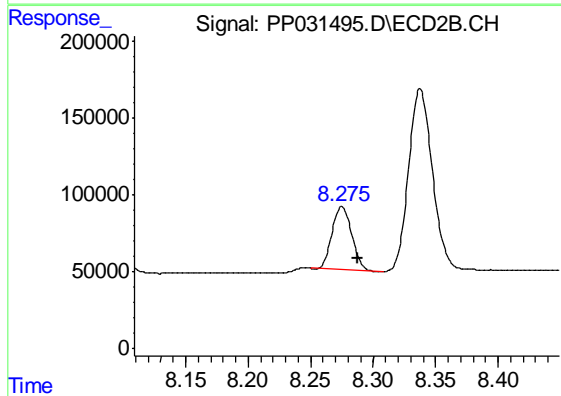
R.T.: 8.836 min
 Delta R.T.: -0.012 min
 Response: 617874
 Conc: 437.84 ng/ml



#41 AR-1268-1

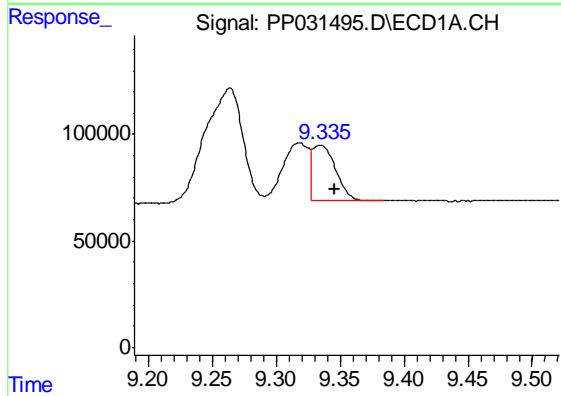
R.T.: 9.264 min
 Delta R.T.: 0.009 min
 Response: 1065336
 Conc: 252.43 ng/ml

Instrument :
 ECD_P
 ClientSampleId :
 AR1660CCC500



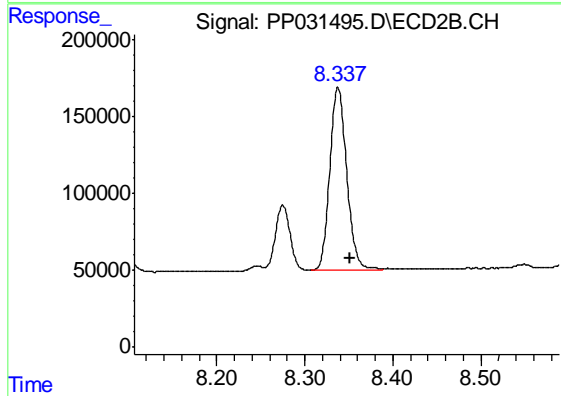
#41 AR-1268-1

R.T.: 8.275 min
 Delta R.T.: -0.012 min
 Response: 453657
 Conc: 92.17 ng/ml



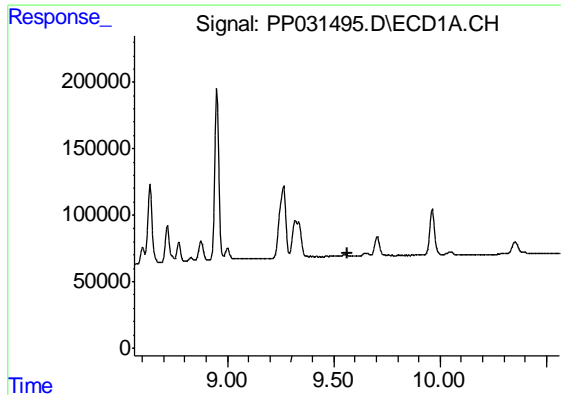
#42 AR-1268-2

R.T.: 9.335 min
 Delta R.T.: -0.011 min
 Response: 332100
 Conc: 80.41 ng/ml



#42 AR-1268-2

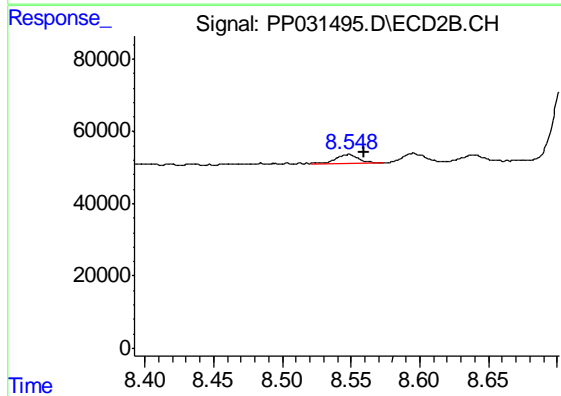
R.T.: 8.338 min
 Delta R.T.: -0.014 min
 Response: 1588669
 Conc: 326.73 ng/ml



#43 AR-1268-3

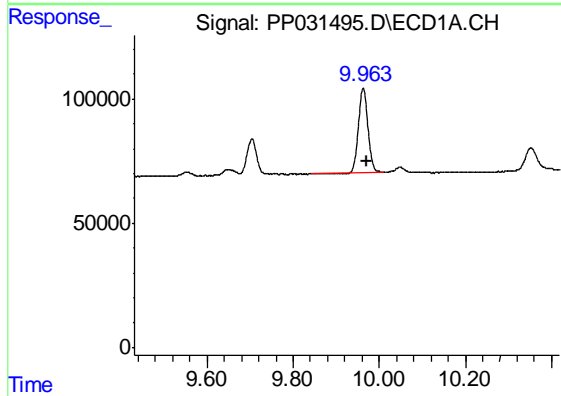
R.T.: 0.000 min
 Exp R.T. : 9.562 min
 Response: 0
 Conc: N.D.

Instrument :
 ECD_P
 ClientSampleId :
 AR1660CCC500



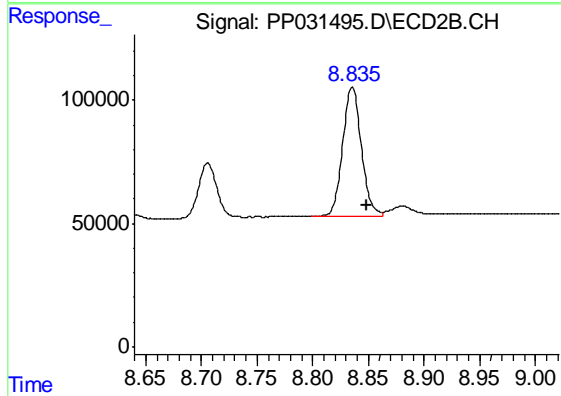
#43 AR-1268-3

R.T.: 8.548 min
 Delta R.T.: -0.011 min
 Response: 26223
 Conc: 6.30 ng/ml



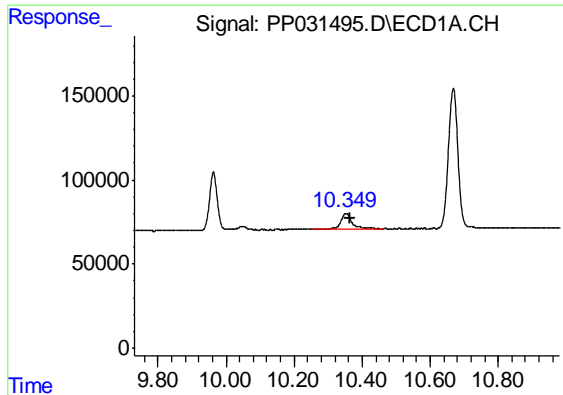
#44 AR-1268-4

R.T.: 9.963 min
 Delta R.T.: -0.009 min
 Response: 527240
 Conc: 364.85 ng/ml



#44 AR-1268-4

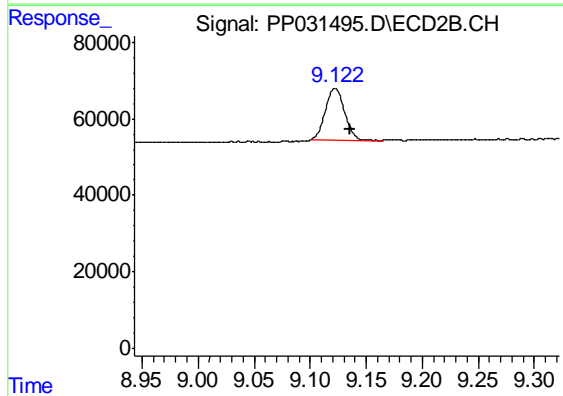
R.T.: 8.836 min
 Delta R.T.: -0.013 min
 Response: 617874
 Conc: 370.74 ng/ml



#45 AR-1268-5

R.T.: 10.352 min
Delta R.T.: -0.011 min
Response: 228710
Conc: 20.30 ng/ml

Instrument :
ECD_P
ClientSampleId :
AR1660CCC500



#45 AR-1268-5

R.T.: 9.122 min
Delta R.T.: -0.014 min
Response: 160309
Conc: 12.28 ng/ml