

Data Path : Z:\pestpcbsrv\HPCHEM1\ECD\_P\Data\PP112221\  
 Data File : PP041209.D  
 Signal(s) : Signal #1: ECD1A.CH Signal #2: ECD2B.CH  
 Acq On : 22 Nov 2021 16:56  
 Operator : AJ\MA  
 Sample : M4763-08 10X  
 Misc :  
 ALS Vial : 16 Sample Multiplier: 1

Instrument :  
 ECD\_P  
 ClientSampleId :  
 NEB-8013-1-1

Integration File signal 1: autoint1.e  
 Integration File signal 2: autoint2.e  
 Quant Time: Nov 23 03:37:39 2021  
 Quant Method : Z:\pestpcbsrv\HPCHEM1\ECD\_P\methods\PP111521.M  
 Quant Title : GC EXTRACTABLES  
 QLast Update : Tue Nov 16 04:45:00 2021  
 Response via : Initial Calibration  
 Integrator: ChemStation 6890 Scale Mode: Small noise peaks clipped

Volume Inj. : 2 µl  
 Signal #1 Phase : ZB-MR1 Signal #2 Phase: ZB-MR2  
 Signal #1 Info : 30Mx0.32mmx 0.50µ Signal #2 Info : 30M x 0.32mm x 0.25µm

Compound	RT#1	RT#2	Resp#1	Resp#2	ng/ml	ng/ml
-----						
System Monitoring Compounds						
1) SA Tetrachlo...	4.754	3.758	30508	49361	1.447	1.776
2) SA Decachlor...	10.656	9.019	38648	32975	1.769	2.300 #
Target Compounds						
26) L6 AR-1254-1	6.978	5.874	267529	449948	346.420	395.136
27) L6 AR-1254-2	7.207	6.034	387975	374509	313.885	381.943
28) L6 AR-1254-3	7.587	6.453	339073	454225	253.221	314.023
29) L6 AR-1254-4	7.883	6.693	230664	230032	241.702	277.315
30) L6 AR-1254-5	8.310	7.121	245368	308091	230.844	264.307
-----						

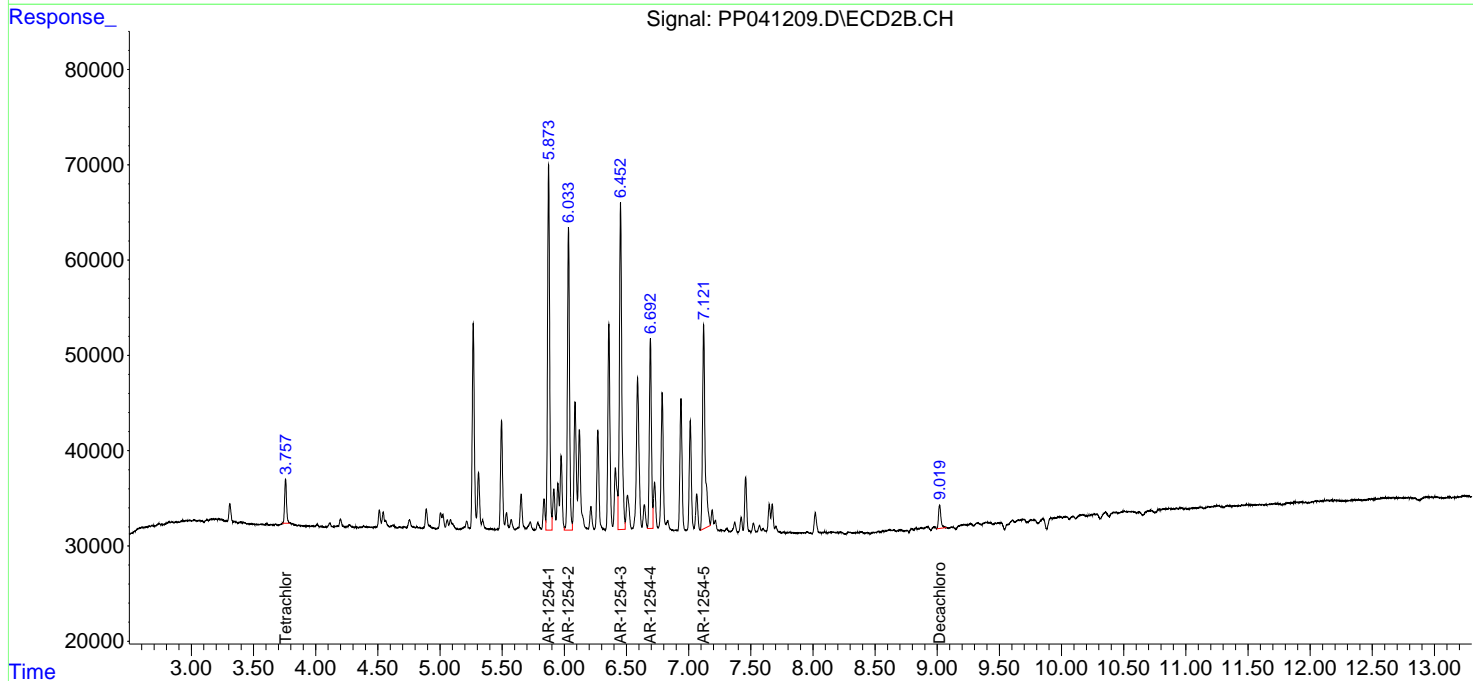
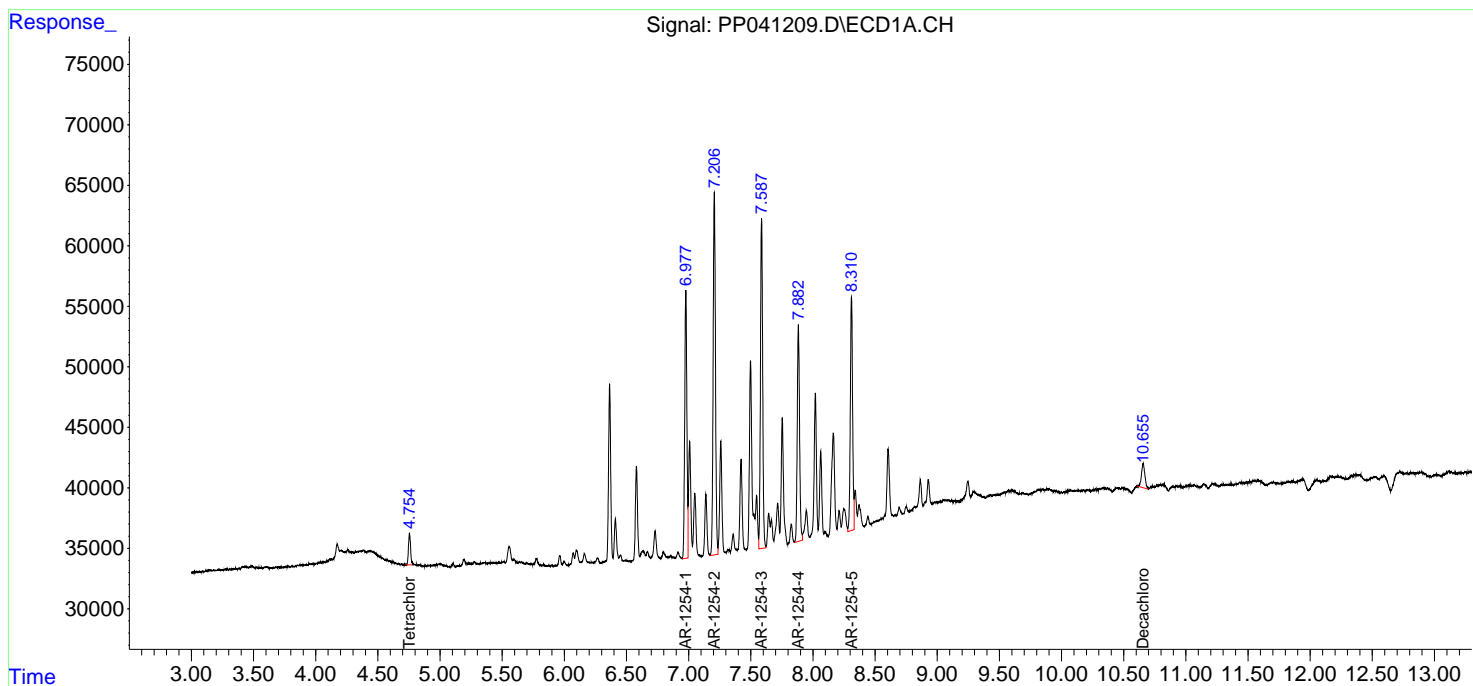
(f)=RT Delta > 1/2 Window (#)=Amounts differ by > 25% (m)=manual int.

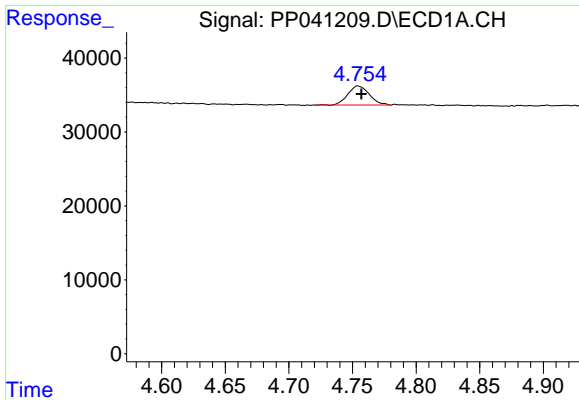
Data Path : Z:\pestpcbsrv\HPCHEM1\ECD\_P\Data\PP112221\  
 Data File : PP041209.D  
 Signal(s) : Signal #1: ECD1A.CH Signal #2: ECD2B.CH  
 Acq On : 22 Nov 2021 16:56  
 Operator : AJ\MA  
 Sample : M4763-08 10X  
 Misc :  
 ALS Vial : 16 Sample Multiplier: 1

Instrument :  
 ECD\_P  
 ClientSampleId :  
 NEB-8013-1-1

Integration File signal 1: autoint1.e  
 Integration File signal 2: autoint2.e  
 Quant Time: Nov 23 03:37:39 2021  
 Quant Method : Z:\pestpcbsrv\HPCHEM1\ECD\_P\methods\PP111521.M  
 Quant Title : GC EXTRACTABLES  
 QLast Update : Tue Nov 16 04:45:00 2021  
 Response via : Initial Calibration  
 Integrator: ChemStation 6890 Scale Mode: Small noise peaks clipped

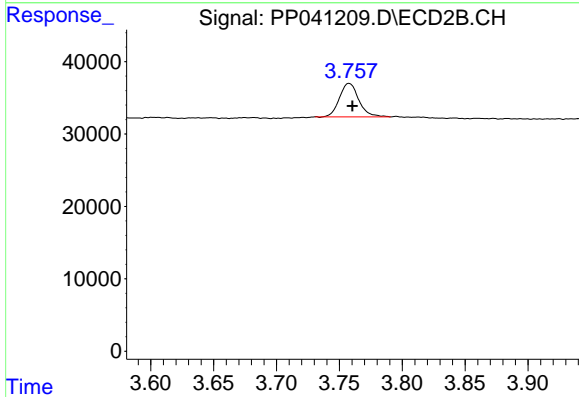
Volume Inj. : 2 µl  
 Signal #1 Phase : ZB-MR1 Signal #2 Phase: ZB-MR2  
 Signal #1 Info : 30Mx0.32mmx 0.50µm Signal #2 Info : 30M x 0.32mm x 0.25µm



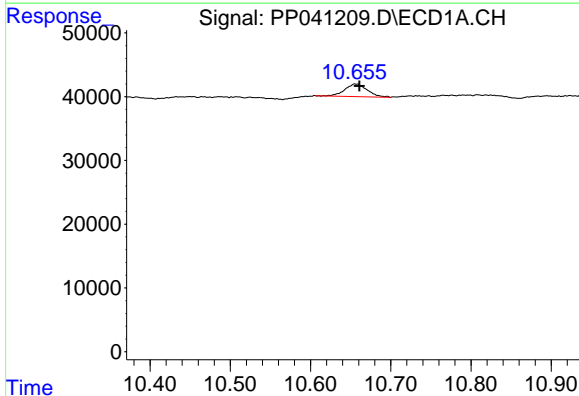


#1 Tetrachloro-m-xylene  
 R.T.: 4.754 min  
 Delta R.T.: -0.003 min  
 Response: 30508  
 Conc: 1.45 ng/ml

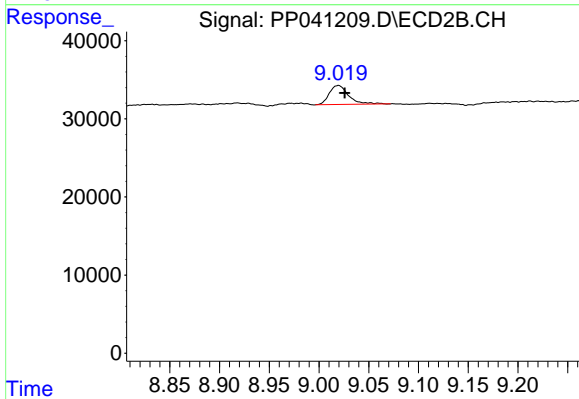
Instrument :  
 ECD\_P  
 ClientSampleId :  
 NEB-8013-1-1



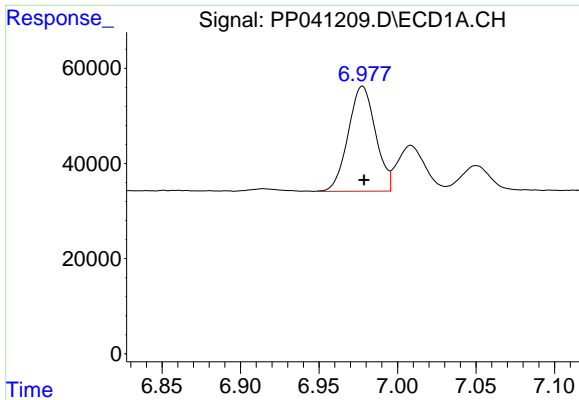
#1 Tetrachloro-m-xylene  
 R.T.: 3.758 min  
 Delta R.T.: -0.003 min  
 Response: 49361  
 Conc: 1.78 ng/ml



#2 Decachlorobiphenyl  
 R.T.: 10.656 min  
 Delta R.T.: -0.005 min  
 Response: 38648  
 Conc: 1.77 ng/ml



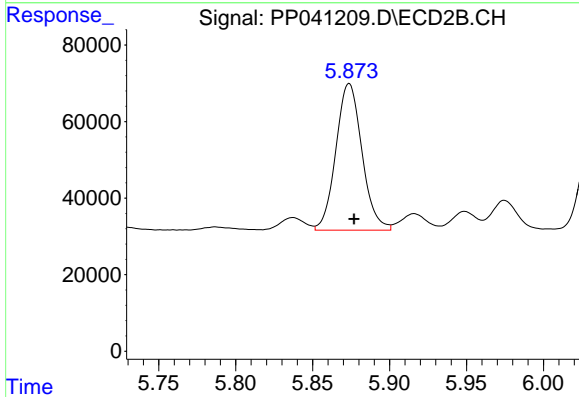
#2 Decachlorobiphenyl  
 R.T.: 9.019 min  
 Delta R.T.: -0.007 min  
 Response: 32975  
 Conc: 2.30 ng/ml



#26 AR-1254-1

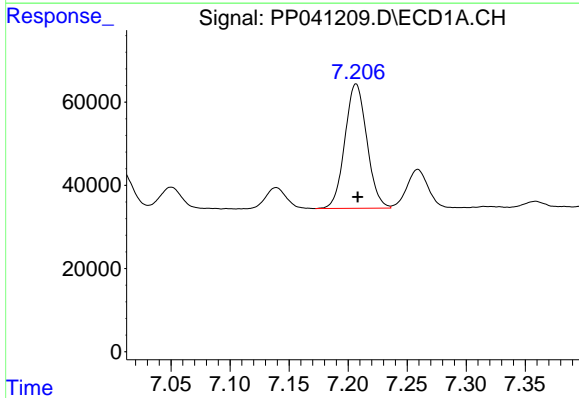
R.T.: 6.978 min  
 Delta R.T.: 0.000 min  
 Response: 267529  
 Conc: 346.42 ng/ml

Instrument :  
 ECD\_P  
 ClientSampleId :  
 NEB-8013-1-1



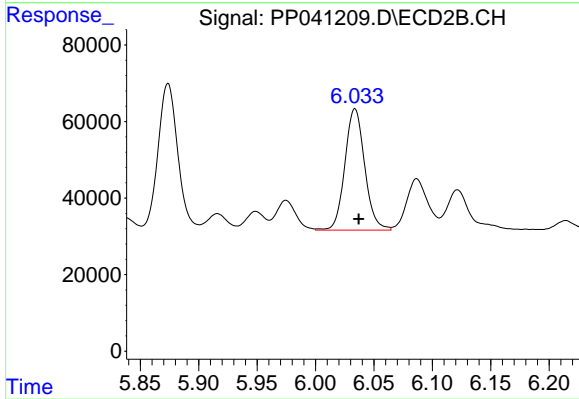
#26 AR-1254-1

R.T.: 5.874 min  
 Delta R.T.: -0.003 min  
 Response: 449948  
 Conc: 395.14 ng/ml



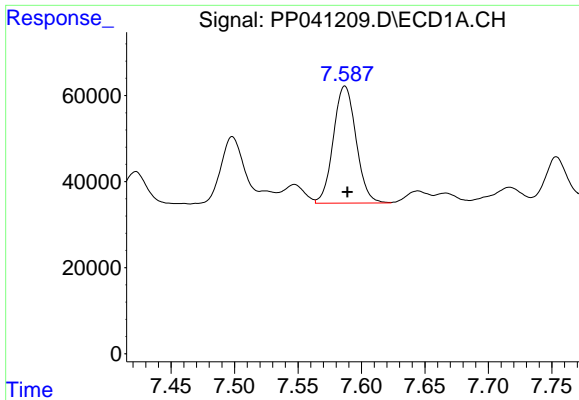
#27 AR-1254-2

R.T.: 7.207 min  
 Delta R.T.: -0.001 min  
 Response: 387975  
 Conc: 313.89 ng/ml



#27 AR-1254-2

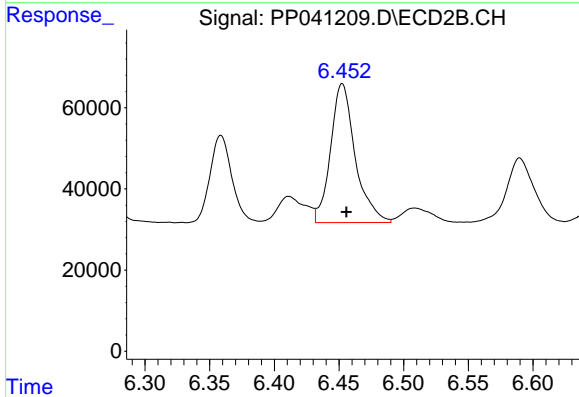
R.T.: 6.034 min  
 Delta R.T.: -0.003 min  
 Response: 374509  
 Conc: 381.94 ng/ml



#28 AR-1254-3

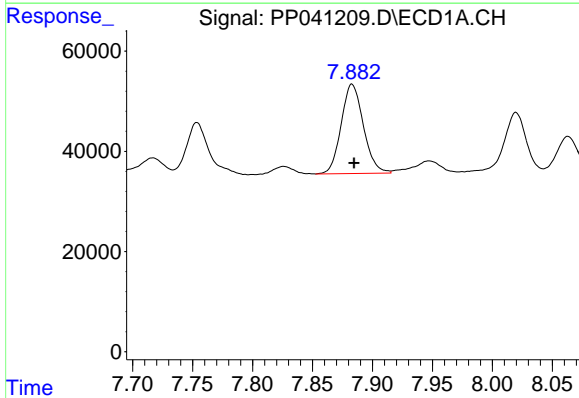
R.T.: 7.587 min  
 Delta R.T.: -0.002 min  
 Response: 339073  
 Conc: 253.22 ng/ml

Instrument :  
 ECD\_P  
 ClientSampleId :  
 NEB-8013-1-1



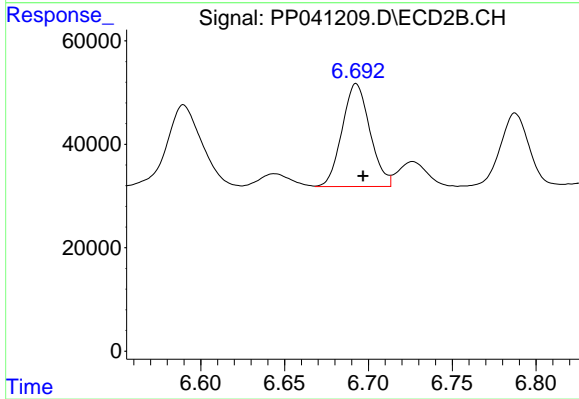
#28 AR-1254-3

R.T.: 6.453 min  
 Delta R.T.: -0.003 min  
 Response: 454225  
 Conc: 314.02 ng/ml



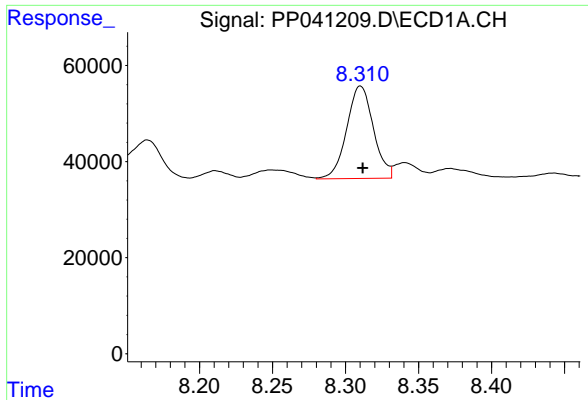
#29 AR-1254-4

R.T.: 7.883 min  
 Delta R.T.: -0.002 min  
 Response: 230664  
 Conc: 241.70 ng/ml



#29 AR-1254-4

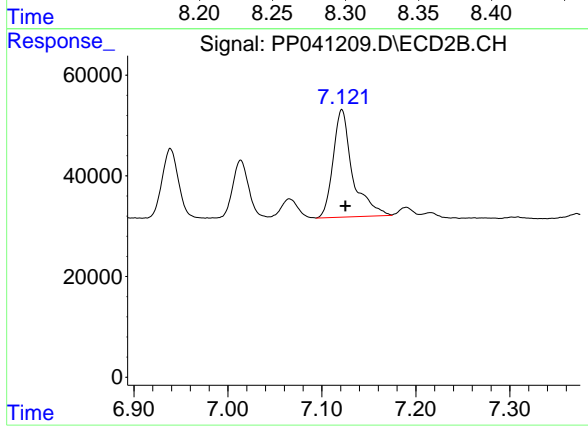
R.T.: 6.693 min  
 Delta R.T.: -0.004 min  
 Response: 230032  
 Conc: 277.31 ng/ml



#30 AR-1254-5

R.T.: 8.310 min  
Delta R.T.: -0.002 min  
Response: 245368  
Conc: 230.84 ng/ml

Instrument :  
ECD\_P  
ClientSampleId :  
NEB-8013-1-1



#30 AR-1254-5

R.T.: 7.121 min  
Delta R.T.: -0.004 min  
Response: 308091  
Conc: 264.31 ng/ml