

Data Path : Z:\pestpcbsrv\HPCHEM1\ECD_P\Data\PP112221\
 Data File : PP041216.D
 Signal(s) : Signal #1: ECD1A.CH Signal #2: ECD2B.CH
 Acq On : 22 Nov 2021 19:20
 Operator : AJ\MA
 Sample : M4763-10 10X
 Misc :
 ALS Vial : 18 Sample Multiplier: 1

Instrument :
 ECD_P
 ClientSampleId :
 IRV-2021-23B

Integration File signal 1: autoint1.e
 Integration File signal 2: autoint2.e
 Quant Time: Nov 23 03:38:19 2021
 Quant Method : Z:\pestpcbsrv\HPCHEM1\ECD_P\methods\PP111521.M
 Quant Title : GC EXTRACTABLES
 QLast Update : Tue Nov 16 04:45:00 2021
 Response via : Initial Calibration
 Integrator: ChemStation 6890 Scale Mode: Small noise peaks clipped

Volume Inj. : 2 µl
 Signal #1 Phase : ZB-MR1 Signal #2 Phase: ZB-MR2
 Signal #1 Info : 30Mx0.32mmx 0.50µ Signal #2 Info : 30M x 0.32mm x 0.25µm

Compound	RT#1	RT#2	Resp#1	Resp#2	ng/ml	ng/ml

System Monitoring Compounds						
1) SA Tetrachlo...	4.755	3.758	29613	47530	1.404	1.710
2) SA Decachlor...	10.658	9.021	37854	30273	1.733	2.112
Target Compounds						
26) L6 AR-1254-1	6.977	5.874	1748759	2997769	2264.445	2632.585
27) L6 AR-1254-2	7.207	6.034	3814801	3336897	3086.305	3403.129
28) L6 AR-1254-3	7.588	6.454	5816597	6558909	4343.856	4534.421
29) L6 AR-1254-4	7.884	6.694	5931538	5044444	6215.368	6081.319
30) L6 AR-1254-5	8.311	7.122	7437170	7777480	6996.944	6672.201
31) L7 AR-1260-1	7.754	6.591	2545235	3424559	2582.267	3577.172 #
32) L7 AR-1260-2	8.019	6.788	3658977	3377374	3096.133	3112.776
33) L7 AR-1260-3	8.372	6.940	955184	3117078	1052.186	3106.587 #
34) L7 AR-1260-4	8.606	7.424	2887107	430357	2671.999	524.708 #
35) L7 AR-1260-5	8.929	7.674	1223951	1009331	587.304	578.321

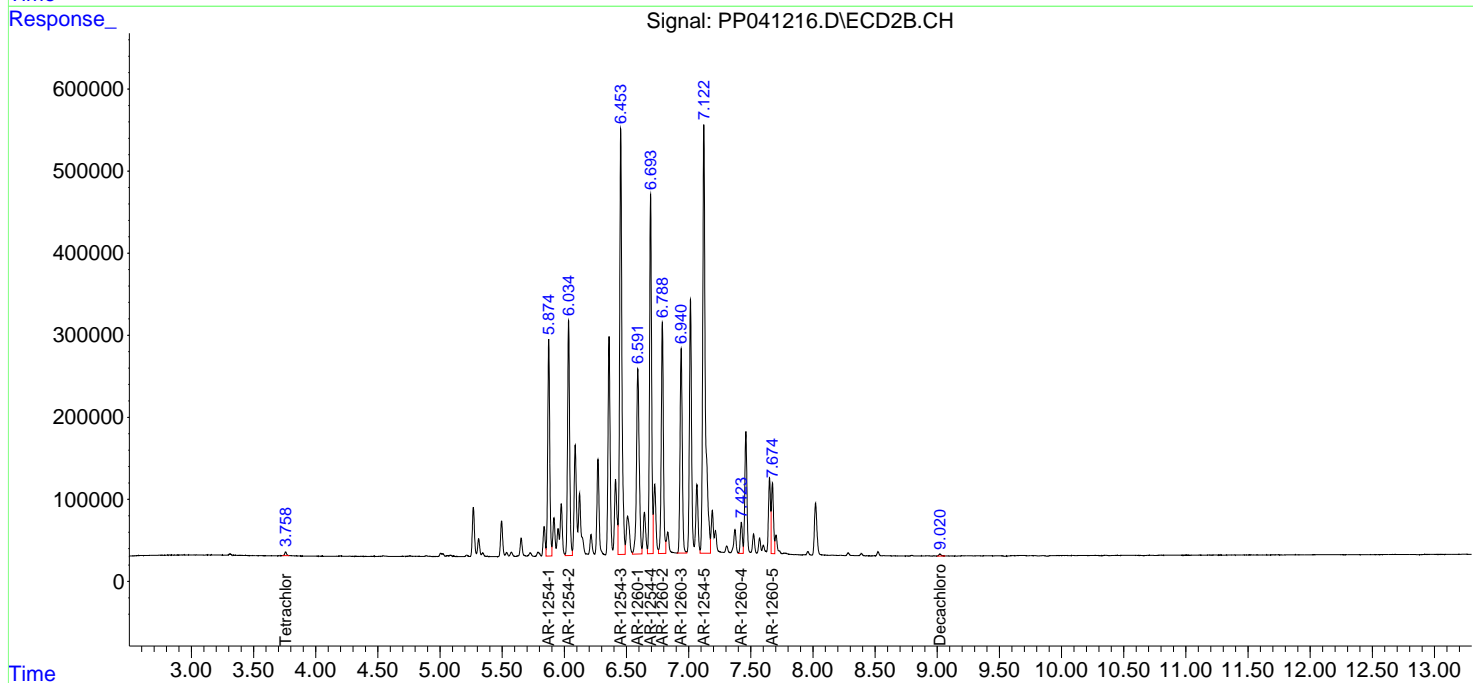
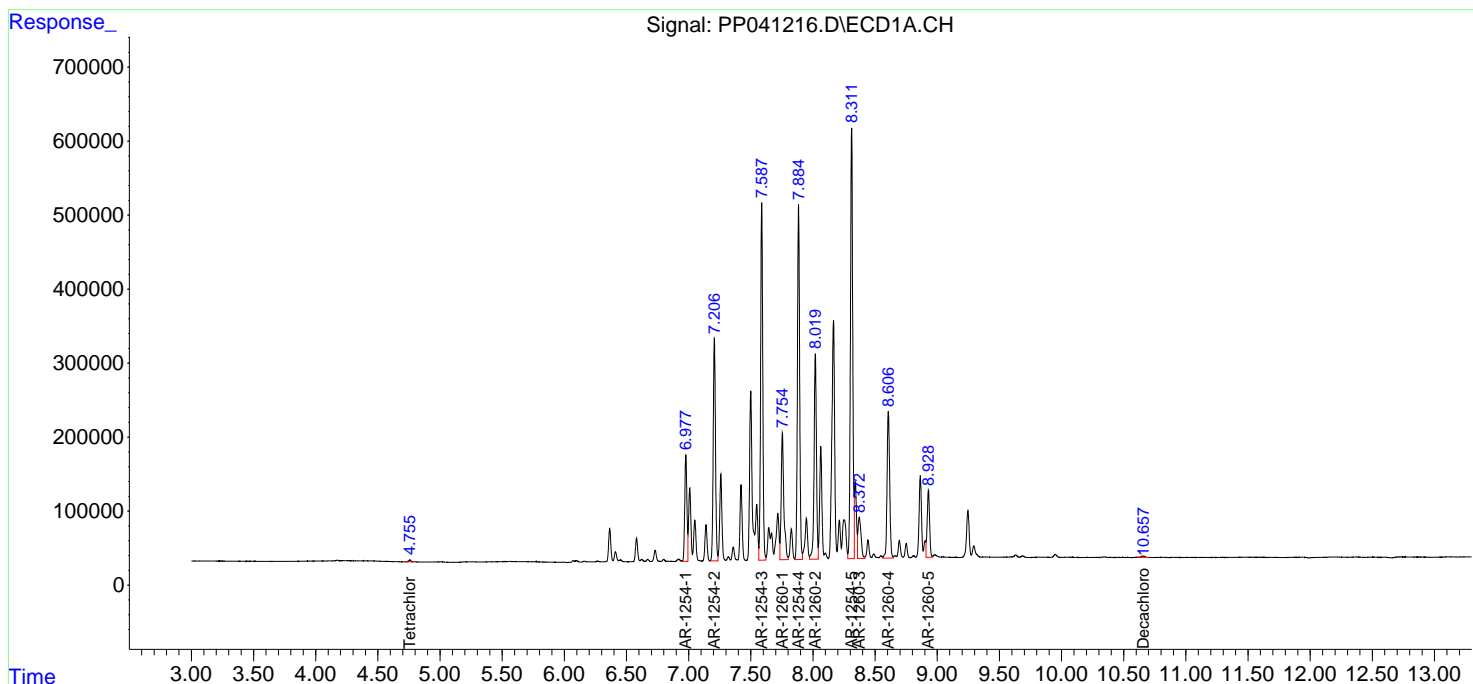
(f)=RT Delta > 1/2 Window (#)=Amounts differ by > 25% (m)=manual int.

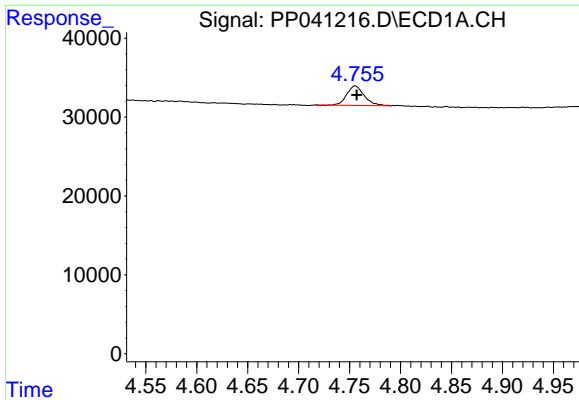
Data Path : Z:\pestpcbsrv\HPCHEM1\ECD_P\Data\PP112221\
 Data File : PP041216.D
 Signal(s) : Signal #1: ECD1A.CH Signal #2: ECD2B.CH
 Acq On : 22 Nov 2021 19:20
 Operator : AJ\MA
 Sample : M4763-10 10X
 Misc :
 ALS Vial : 18 Sample Multiplier: 1

Instrument :
 ECD_P
 ClientSampleId :
 IRV-2021-23B

Integration File signal 1: autoint1.e
 Integration File signal 2: autoint2.e
 Quant Time: Nov 23 03:38:19 2021
 Quant Method : Z:\pestpcbsrv\HPCHEM1\ECD_P\methods\PP111521.M
 Quant Title : GC EXTRACTABLES
 QLast Update : Tue Nov 16 04:45:00 2021
 Response via : Initial Calibration
 Integrator: ChemStation 6890 Scale Mode: Small noise peaks clipped

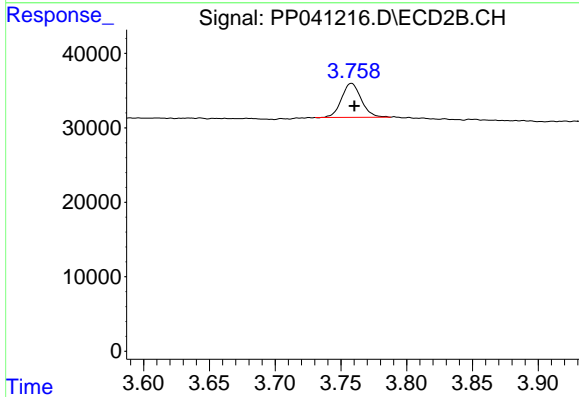
Volume Inj. : 2 µl
 Signal #1 Phase : ZB-MR1 Signal #2 Phase: ZB-MR2
 Signal #1 Info : 30Mx0.32mmx 0.50µ Signal #2 Info : 30M x 0.32mm x 0.25µm



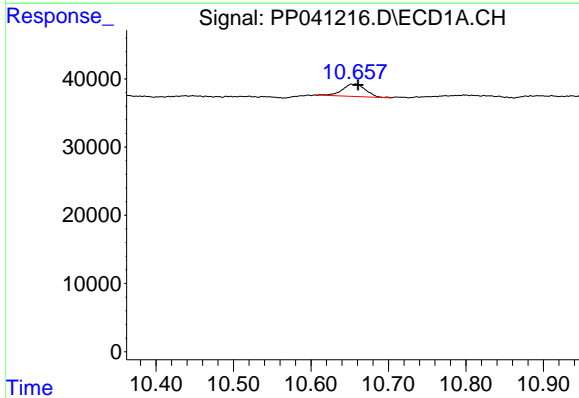


#1 Tetrachloro-m-xylene
 R.T.: 4.755 min
 Delta R.T.: -0.002 min
 Response: 29613
 Conc: 1.40 ng/ml

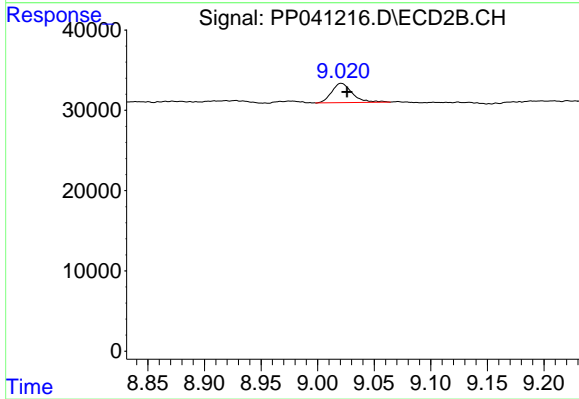
Instrument :
 ECD_P
 ClientSampleId :
 IRV-2021-23B



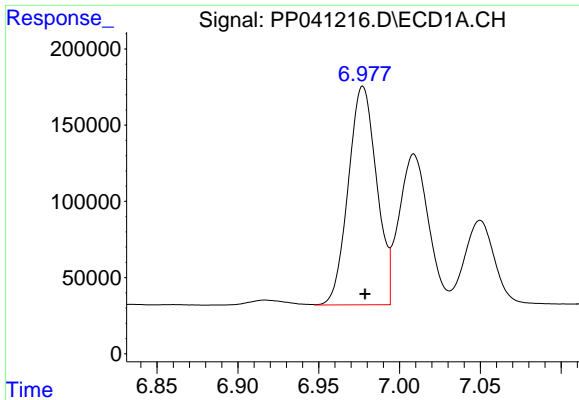
#1 Tetrachloro-m-xylene
 R.T.: 3.758 min
 Delta R.T.: -0.002 min
 Response: 47530
 Conc: 1.71 ng/ml



#2 Decachlorobiphenyl
 R.T.: 10.658 min
 Delta R.T.: -0.003 min
 Response: 37854
 Conc: 1.73 ng/ml



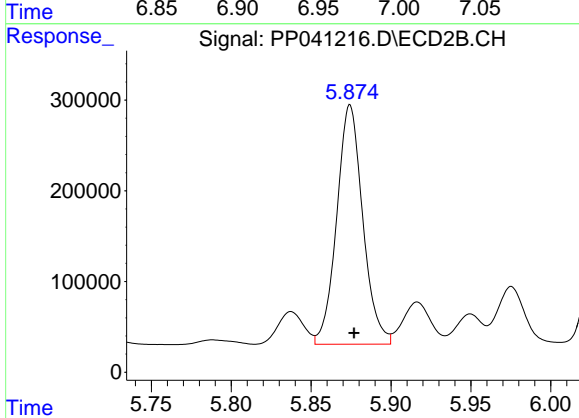
#2 Decachlorobiphenyl
 R.T.: 9.021 min
 Delta R.T.: -0.005 min
 Response: 30273
 Conc: 2.11 ng/ml



#26 AR-1254-1

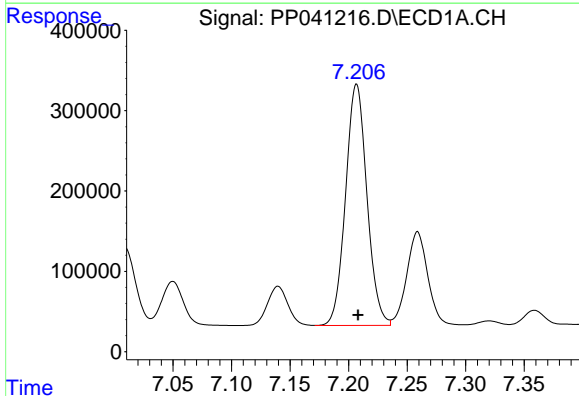
R.T.: 6.977 min
 Delta R.T.: -0.001 min
 Response: 1748759
 Conc: 2264.45 ng/ml

Instrument :
 ECD_P
 ClientSampleId :
 IRV-2021-23B



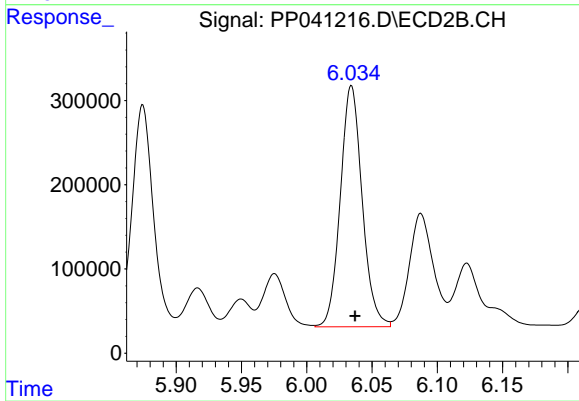
#26 AR-1254-1

R.T.: 5.874 min
 Delta R.T.: -0.003 min
 Response: 2997769
 Conc: 2632.59 ng/ml



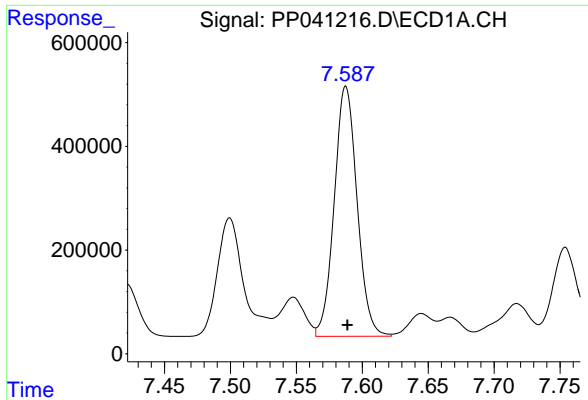
#27 AR-1254-2

R.T.: 7.207 min
 Delta R.T.: -0.001 min
 Response: 3814801
 Conc: 3086.30 ng/ml



#27 AR-1254-2

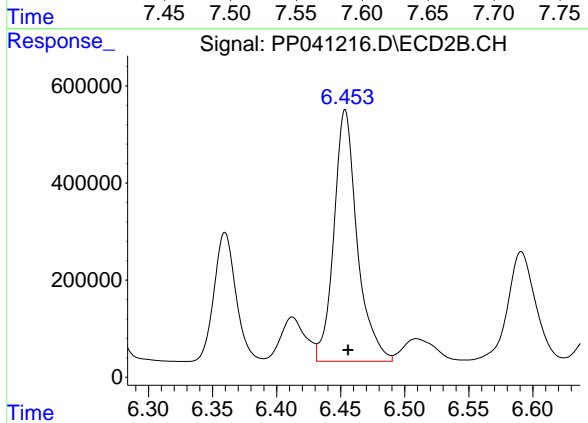
R.T.: 6.034 min
 Delta R.T.: -0.003 min
 Response: 3336897
 Conc: 3403.13 ng/ml



#28 AR-1254-3

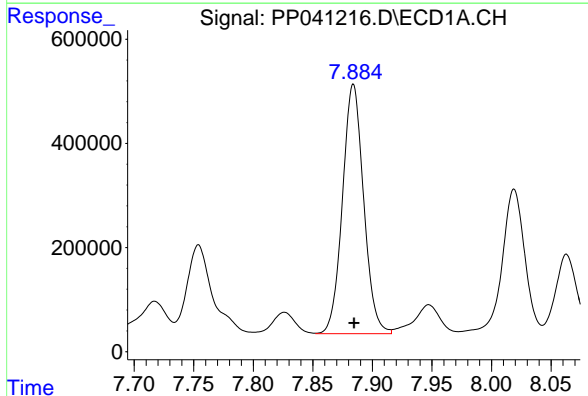
R.T.: 7.588 min
 Delta R.T.: -0.001 min
 Response: 5816597
 Conc: 4343.86 ng/ml

Instrument :
 ECD_P
 ClientSampleId :
 IRV-2021-23B



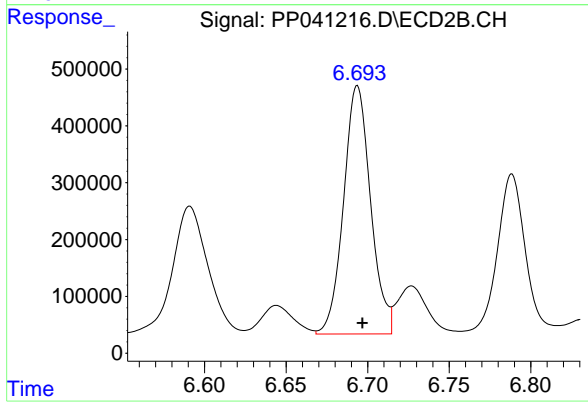
#28 AR-1254-3

R.T.: 6.454 min
 Delta R.T.: -0.002 min
 Response: 6558909
 Conc: 4534.42 ng/ml



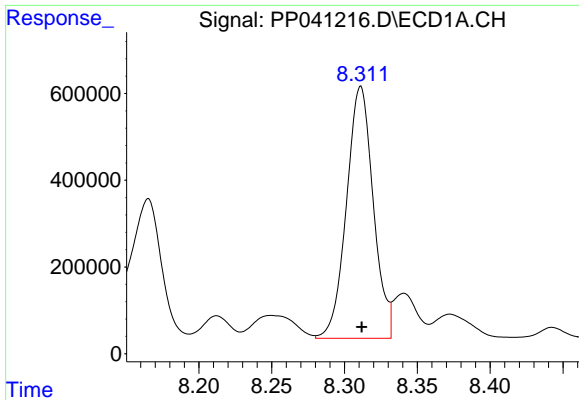
#29 AR-1254-4

R.T.: 7.884 min
 Delta R.T.: 0.000 min
 Response: 5931538
 Conc: 6215.37 ng/ml



#29 AR-1254-4

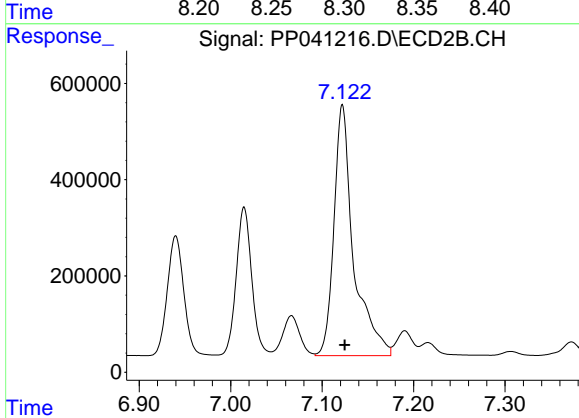
R.T.: 6.694 min
 Delta R.T.: -0.003 min
 Response: 5044444
 Conc: 6081.32 ng/ml



#30 AR-1254-5

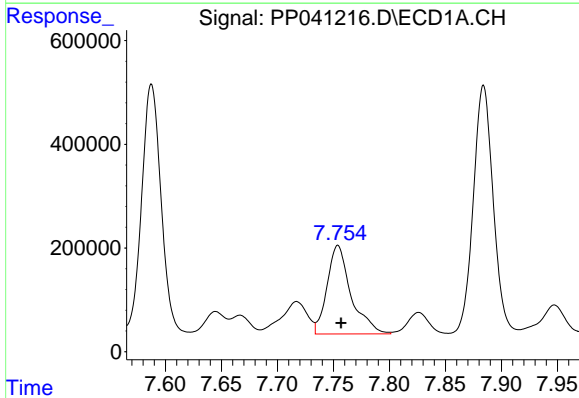
R.T.: 8.311 min
 Delta R.T.: 0.000 min
 Response: 7437170
 Conc: 6996.94 ng/ml

Instrument :
 ECD_P
 ClientSampleId :
 IRV-2021-23B



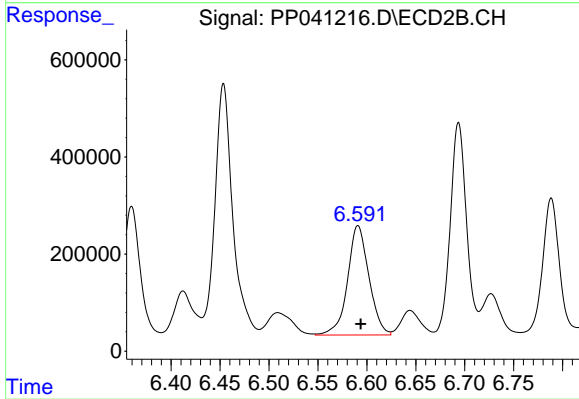
#30 AR-1254-5

R.T.: 7.122 min
 Delta R.T.: -0.003 min
 Response: 7777480
 Conc: 6672.20 ng/ml



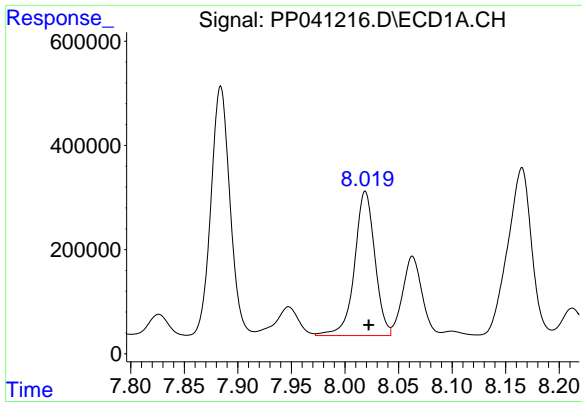
#31 AR-1260-1

R.T.: 7.754 min
 Delta R.T.: -0.003 min
 Response: 2545235
 Conc: 2582.27 ng/ml



#31 AR-1260-1

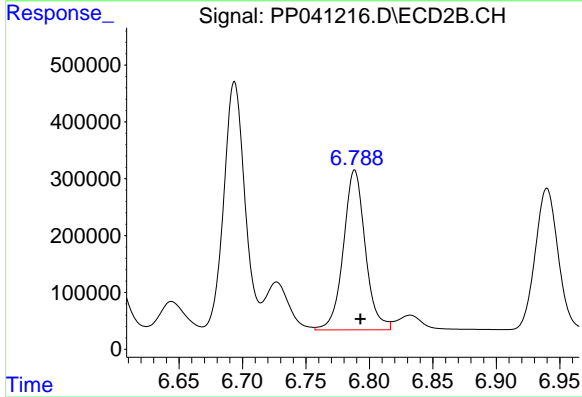
R.T.: 6.591 min
 Delta R.T.: -0.003 min
 Response: 3424559
 Conc: 3577.17 ng/ml



#32 AR-1260-2

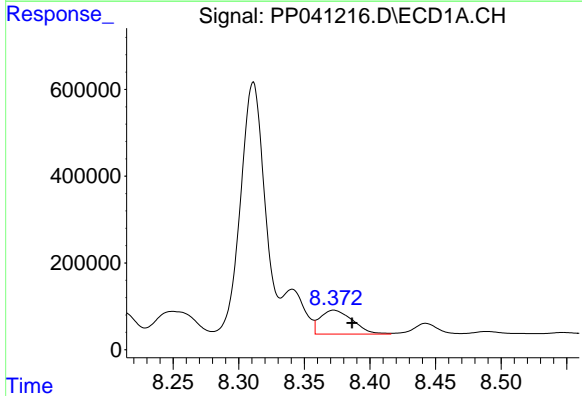
R.T.: 8.019 min
 Delta R.T.: -0.003 min
 Response: 3658977
 Conc: 3096.13 ng/ml

Instrument :
 ECD_P
 ClientSampleId :
 IRV-2021-23B



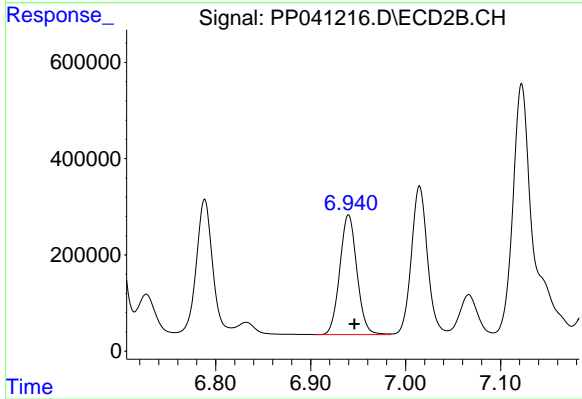
#32 AR-1260-2

R.T.: 6.788 min
 Delta R.T.: -0.004 min
 Response: 3377374
 Conc: 3112.78 ng/ml



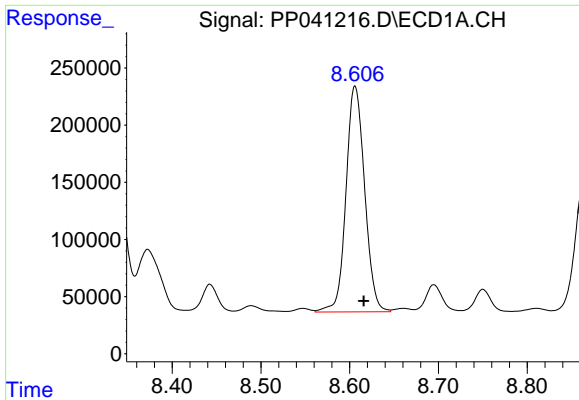
#33 AR-1260-3

R.T.: 8.372 min
 Delta R.T.: -0.014 min
 Response: 955184
 Conc: 1052.19 ng/ml



#33 AR-1260-3

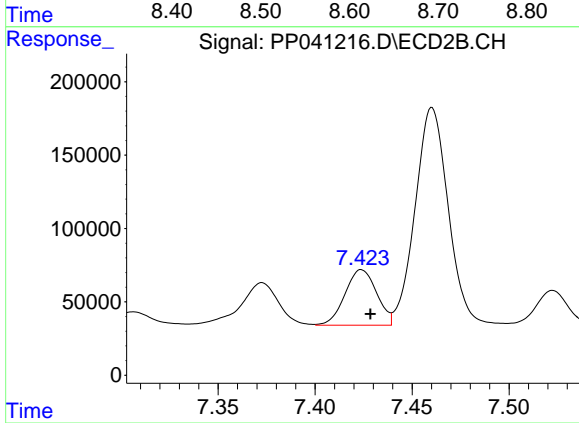
R.T.: 6.940 min
 Delta R.T.: -0.006 min
 Response: 3117078
 Conc: 3106.59 ng/ml



#34 AR-1260-4

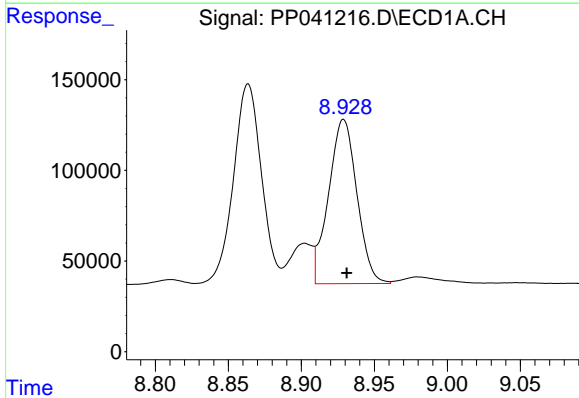
R.T.: 8.606 min
 Delta R.T.: -0.010 min
 Response: 2887107
 Conc: 2672.00 ng/ml

Instrument :
 ECD_P
 ClientSampleId :
 IRV-2021-23B



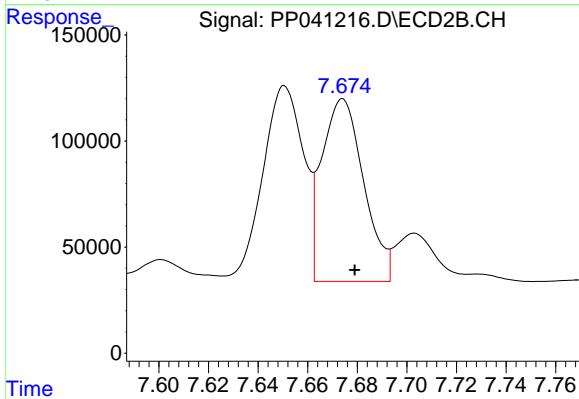
#34 AR-1260-4

R.T.: 7.424 min
 Delta R.T.: -0.005 min
 Response: 430357
 Conc: 524.71 ng/ml



#35 AR-1260-5

R.T.: 8.929 min
 Delta R.T.: -0.002 min
 Response: 1223951
 Conc: 587.30 ng/ml



#35 AR-1260-5

R.T.: 7.674 min
 Delta R.T.: -0.005 min
 Response: 1009331
 Conc: 578.32 ng/ml