

Data Path : Z:\pestpcbsrv\HPCHEM1\ECD\_P\Data\PP112222\  
 Data File : PP053422.D  
 Signal(s) : Signal #1: ECD1A.ch Signal #2: ECD2B.ch  
 Acq On : 22 Nov 2022 14:11  
 Operator : YP\AJ  
 Sample : N5749-01MS  
 Misc :  
 ALS Vial : 11 Sample Multiplier: 1

Instrument :  
 ECD\_P  
 ClientSampleId :  
 MH-82MS

Integration File signal 1: autoint1.e  
 Integration File signal 2: autoint2.e  
 Quant Time: Nov 22 20:46:40 2022  
 Quant Method : Z:\pestpcbsrv\HPCHEM1\ECD\_P\methods\PP110822.M  
 Quant Title : GC EXTRACTABLES  
 QLast Update : Wed Nov 09 05:50:05 2022  
 Response via : Initial Calibration  
 Integrator: ChemStation

Volume Inj. : 2 µl  
 Signal #1 Phase : ZB-MR1 Signal #2 Phase: ZB-MR2  
 Signal #1 Info : 30Mx0.32mmx 0.50µ Signal #2 Info : 30M x 0.32mm x 0.25µm

Compound	RT#1	RT#2	Resp#1	Resp#2	ng/ml	ng/ml
-----						
System Monitoring Compounds						
1) SA Tetrachlo...	4.400	3.645	41136632	33232248	21.399	22.092
2) SA Decachlor...	10.201	8.723	27095144	35634754	19.982	19.012
Target Compounds						
3) L1 AR-1016-1	5.573	4.744	33056314	32520539	531.368	579.832
4) L1 AR-1016-2	5.595	4.763	47708395	42965175	516.173	553.547
5) L1 AR-1016-3	5.658	4.942	29343104	23256481	518.461	553.863
6) L1 AR-1016-4	5.757	4.984	23081575	19413378	507.421	555.452
7) L1 AR-1016-5	6.053	5.200	22572580	22657045	498.678	498.833
31) L7 AR-1260-1	7.184	6.248	40335704	50105387	493.268	546.588
32) L7 AR-1260-2	7.442	6.438	46157909	61086944	498.422	530.856
33) L7 AR-1260-3	7.803	6.592	31120623	54621968	498.981	509.020
34) L7 AR-1260-4	8.030	7.069	38295471	40161712	511.198	485.432
35) L7 AR-1260-5	8.353	7.313	67100101	91392179	530.158	482.651
-----						

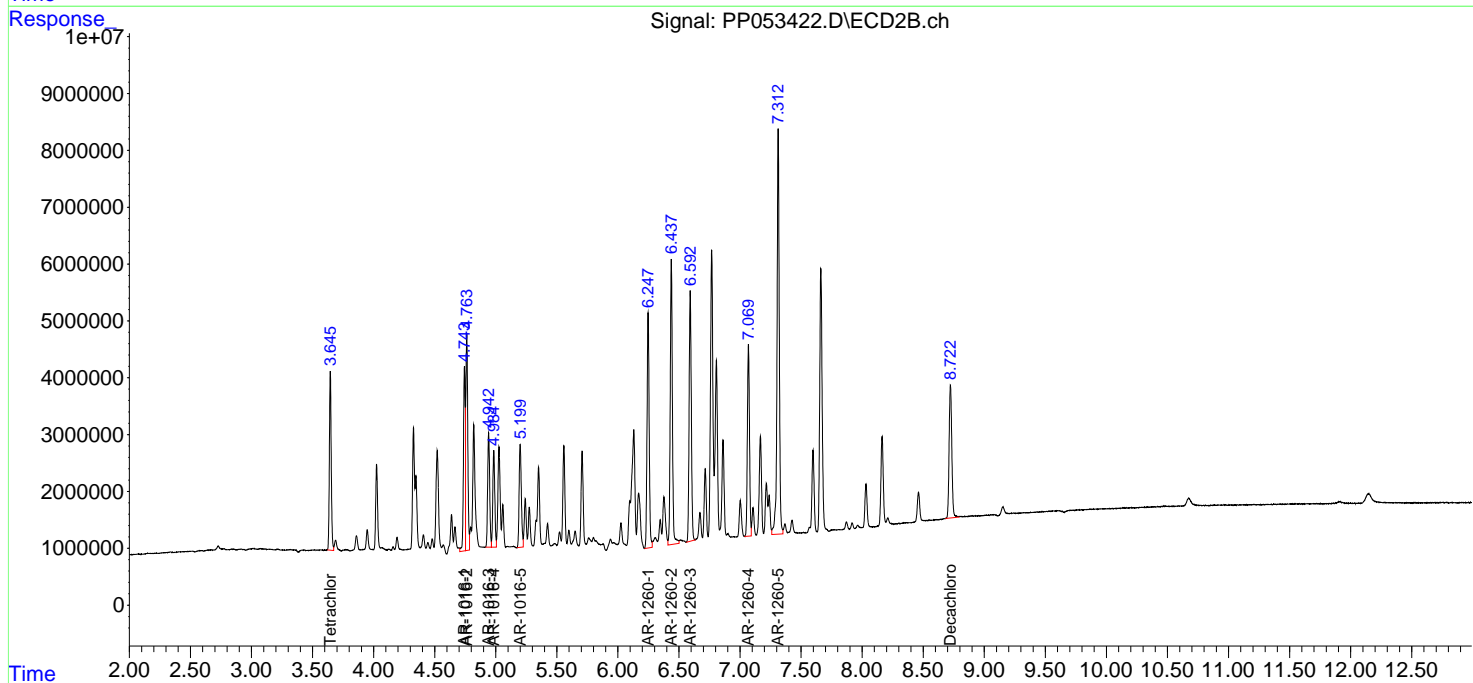
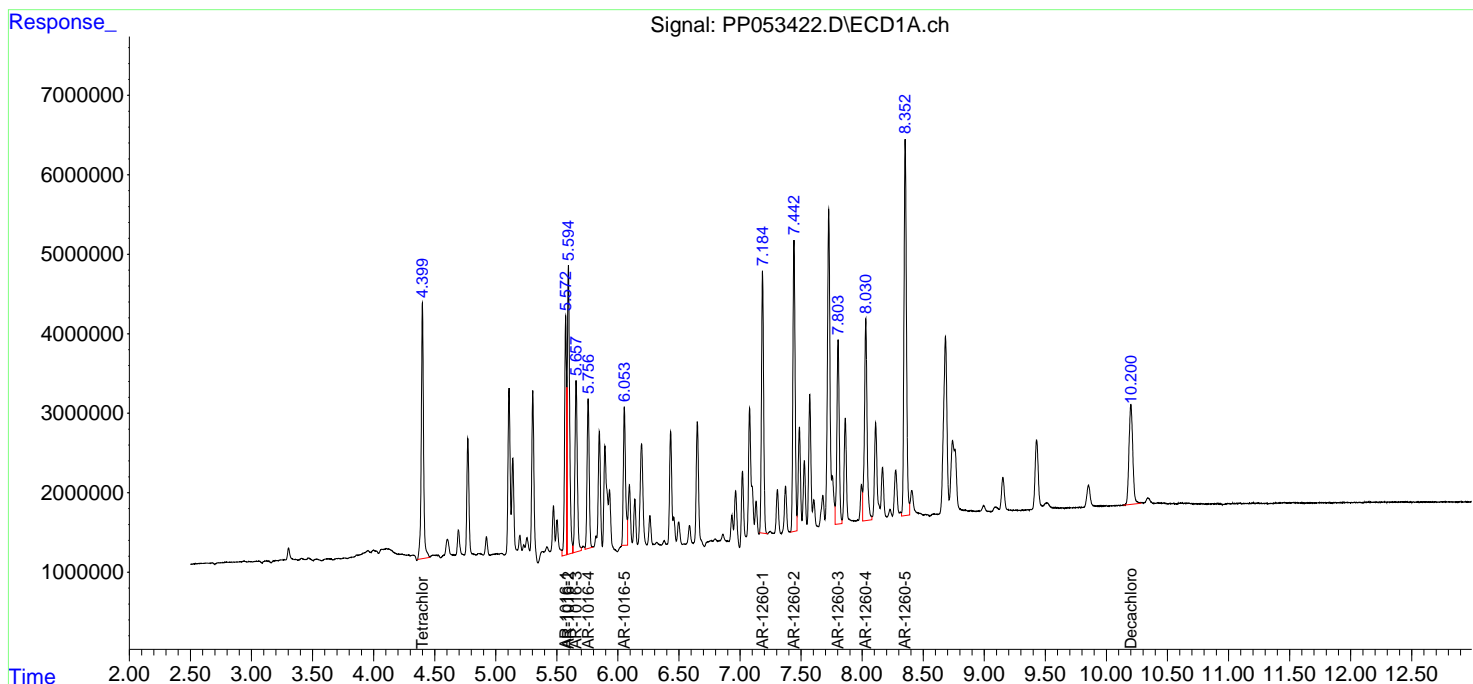
(f)=RT Delta > 1/2 Window (#)=Amounts differ by > 25% (m)=manual int.

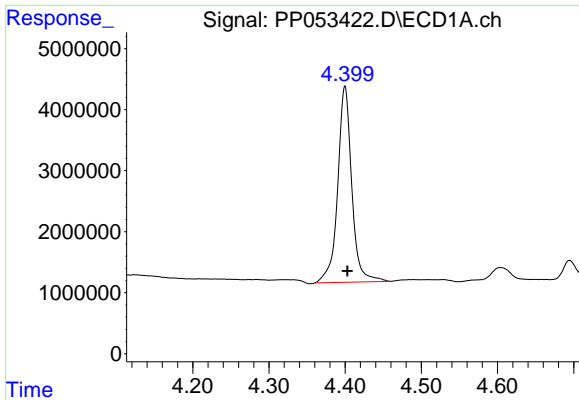
Data Path : Z:\pestpcbsrv\HPCHEM1\ECD\_P\Data\PP112222\  
 Data File : PP053422.D  
 Signal(s) : Signal #1: ECD1A.ch Signal #2: ECD2B.ch  
 Acq On : 22 Nov 2022 14:11  
 Operator : YP\AJ  
 Sample : N5749-01MS  
 Misc :  
 ALS Vial : 11 Sample Multiplier: 1

Instrument :  
 ECD\_P  
 ClientSampleId :  
 MH-82MS

Integration File signal 1: autoint1.e  
 Integration File signal 2: autoint2.e  
 Quant Time: Nov 22 20:46:40 2022  
 Quant Method : Z:\pestpcbsrv\HPCHEM1\ECD\_P\methods\PP110822.M  
 Quant Title : GC EXTRACTABLES  
 QLast Update : Wed Nov 09 05:50:05 2022  
 Response via : Initial Calibration  
 Integrator: ChemStation

Volume Inj. : 2 µl  
 Signal #1 Phase : ZB-MR1 Signal #2 Phase: ZB-MR2  
 Signal #1 Info : 30Mx0.32mmx 0.50µ Signal #2 Info : 30M x 0.32mm x 0.25µm

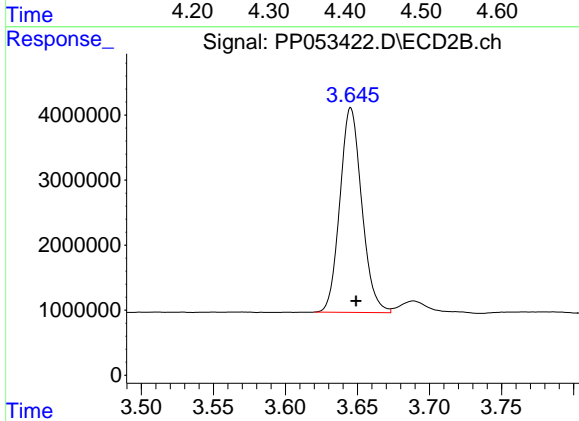




#1 Tetrachloro-m-xylene

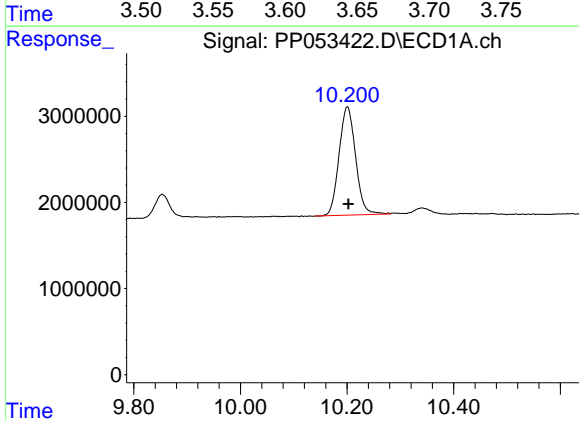
R.T.: 4.400 min  
 Delta R.T.: -0.003 min  
 Response: 41136632  
 Conc: 21.40 ng/ml

Instrument :  
 ECD\_P  
 ClientSampleId :  
 MH-82MS



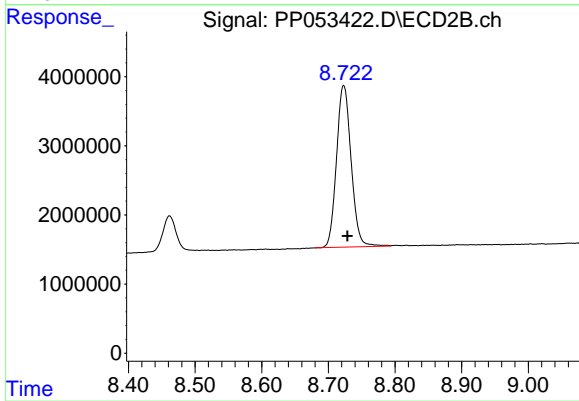
#1 Tetrachloro-m-xylene

R.T.: 3.645 min  
 Delta R.T.: -0.004 min  
 Response: 33232248  
 Conc: 22.09 ng/ml



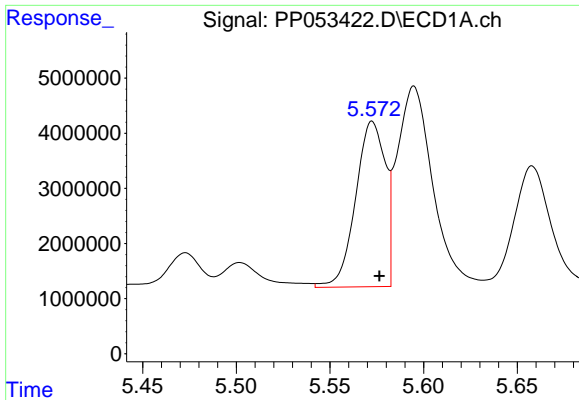
#2 Decachlorobiphenyl

R.T.: 10.201 min  
 Delta R.T.: -0.002 min  
 Response: 27095144  
 Conc: 19.98 ng/ml



#2 Decachlorobiphenyl

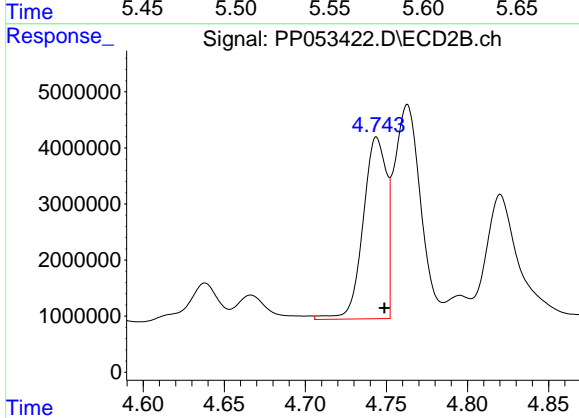
R.T.: 8.723 min  
 Delta R.T.: -0.006 min  
 Response: 35634754  
 Conc: 19.01 ng/ml



#3 AR-1016-1

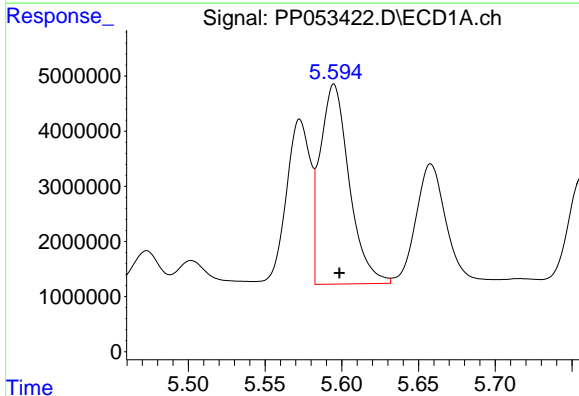
R.T.: 5.573 min  
 Delta R.T.: -0.004 min  
 Response: 33056314  
 Conc: 531.37 ng/ml

Instrument :  
 ECD\_P  
 ClientSampleId :  
 MH-82MS



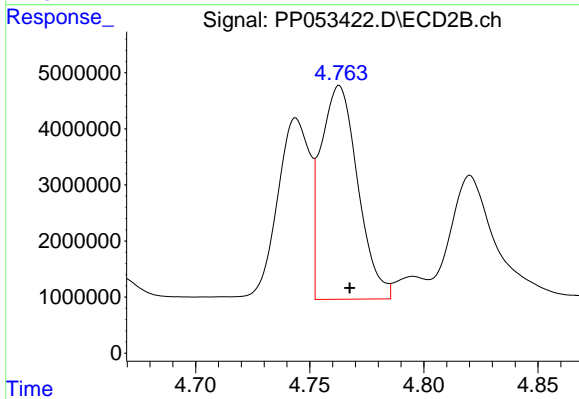
#3 AR-1016-1

R.T.: 4.744 min  
 Delta R.T.: -0.005 min  
 Response: 32520539  
 Conc: 579.83 ng/ml



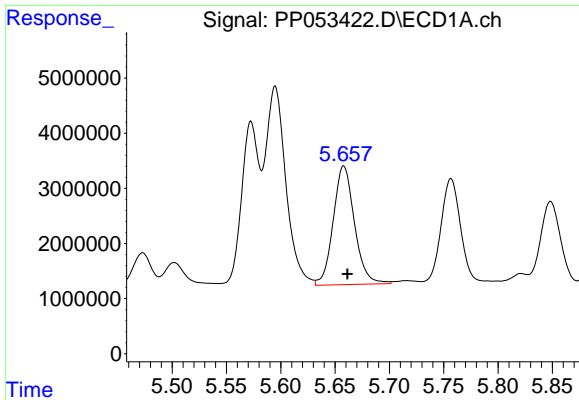
#4 AR-1016-2

R.T.: 5.595 min  
 Delta R.T.: -0.004 min  
 Response: 47708395  
 Conc: 516.17 ng/ml



#4 AR-1016-2

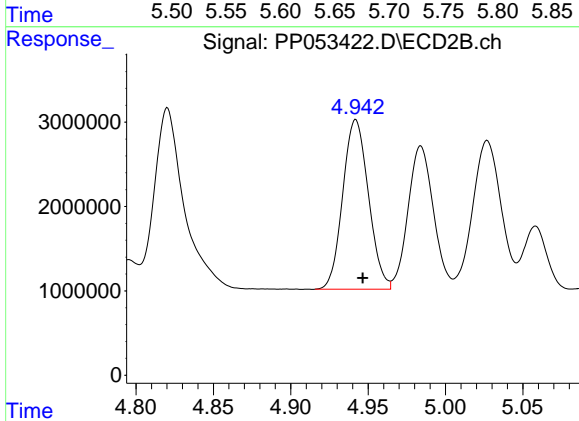
R.T.: 4.763 min  
 Delta R.T.: -0.005 min  
 Response: 42965175  
 Conc: 553.55 ng/ml



#5 AR-1016-3

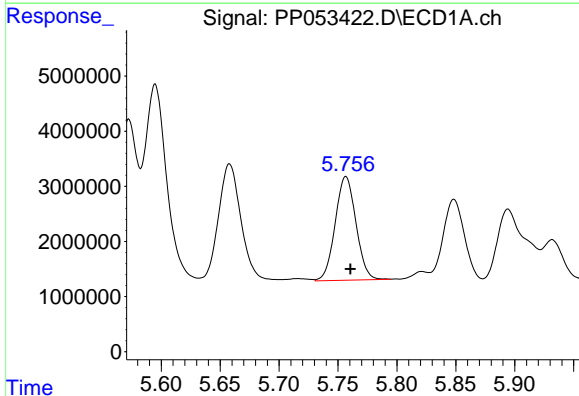
R.T.: 5.658 min  
 Delta R.T.: -0.003 min  
 Response: 29343104  
 Conc: 518.46 ng/ml

Instrument :  
 ECD\_P  
 ClientSampleId :  
 MH-82MS



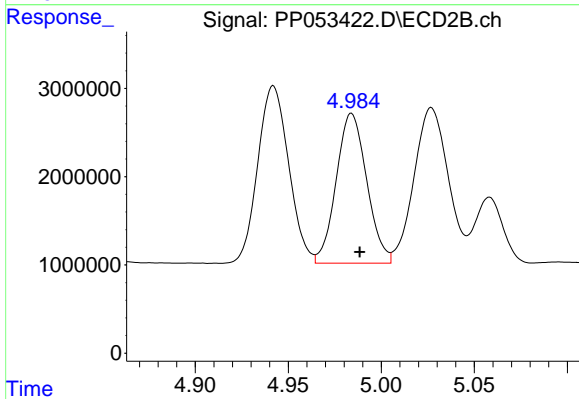
#5 AR-1016-3

R.T.: 4.942 min  
 Delta R.T.: -0.005 min  
 Response: 23256481  
 Conc: 553.86 ng/ml



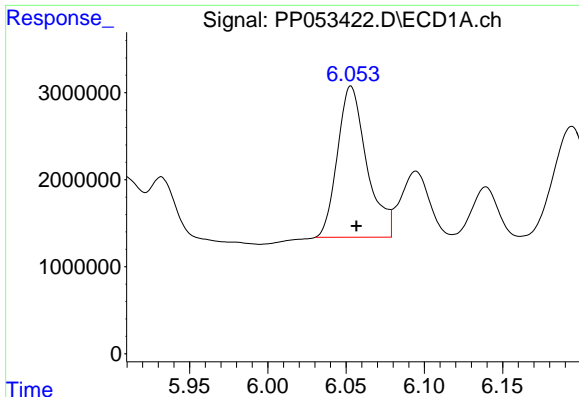
#6 AR-1016-4

R.T.: 5.757 min  
 Delta R.T.: -0.004 min  
 Response: 23081575  
 Conc: 507.42 ng/ml



#6 AR-1016-4

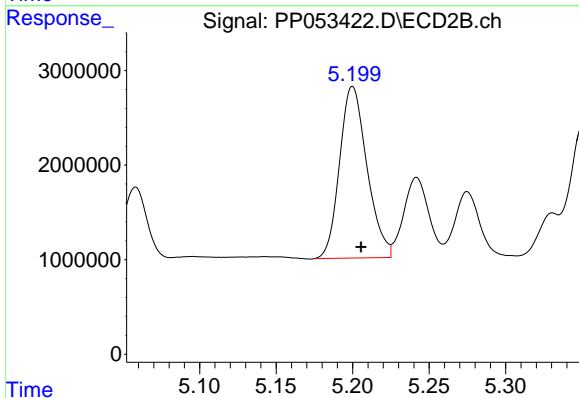
R.T.: 4.984 min  
 Delta R.T.: -0.004 min  
 Response: 19413378  
 Conc: 555.45 ng/ml



#7 AR-1016-5

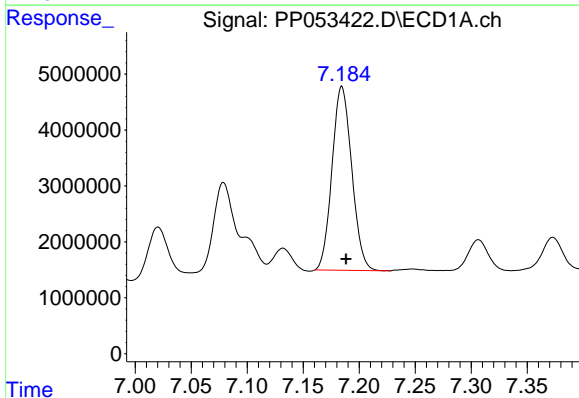
R.T.: 6.053 min  
 Delta R.T.: -0.004 min  
 Response: 22572580  
 Conc: 498.68 ng/ml

Instrument :  
 ECD\_P  
 ClientSampleId :  
 MH-82MS



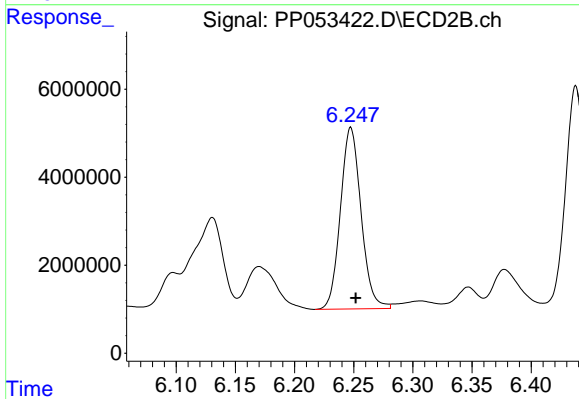
#7 AR-1016-5

R.T.: 5.200 min  
 Delta R.T.: -0.006 min  
 Response: 22657045  
 Conc: 498.83 ng/ml



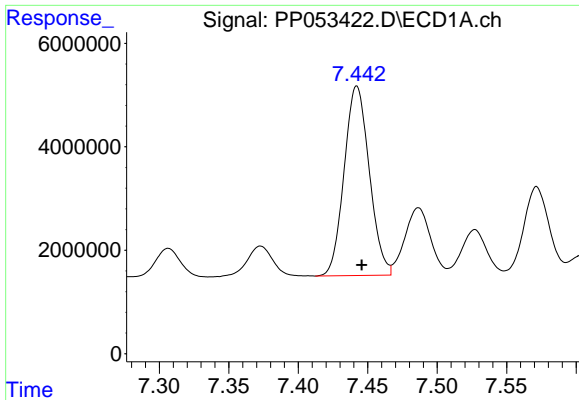
#31 AR-1260-1

R.T.: 7.184 min  
 Delta R.T.: -0.004 min  
 Response: 40335704  
 Conc: 493.27 ng/ml



#31 AR-1260-1

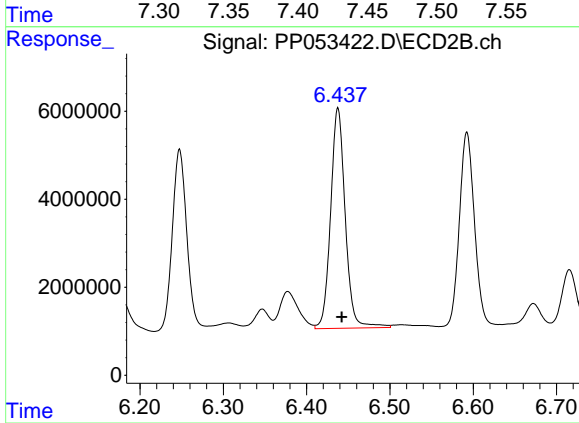
R.T.: 6.248 min  
 Delta R.T.: -0.004 min  
 Response: 50105387  
 Conc: 546.59 ng/ml



#32 AR-1260-2

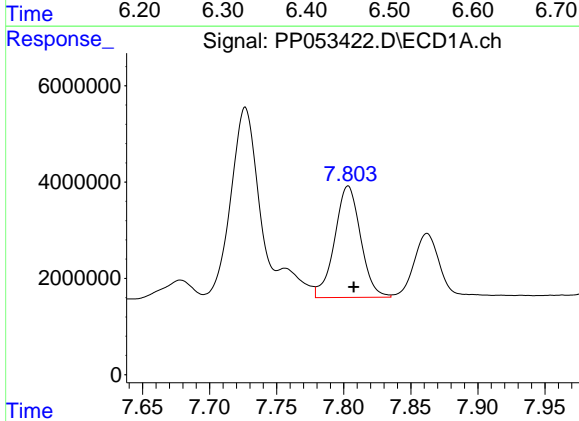
R.T.: 7.442 min  
Delta R.T.: -0.004 min  
Response: 46157909  
Conc: 498.42 ng/ml

Instrument :  
ECD\_P  
ClientSampleId :  
MH-82MS



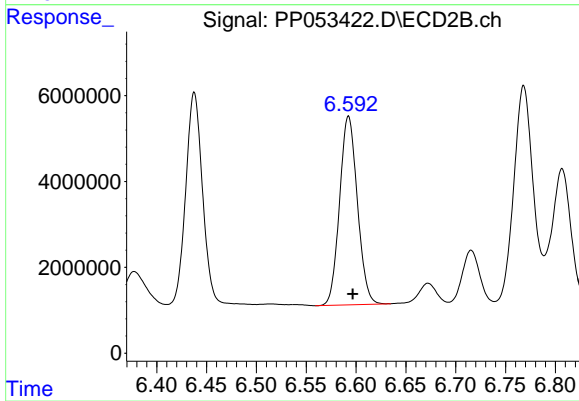
#32 AR-1260-2

R.T.: 6.438 min  
Delta R.T.: -0.004 min  
Response: 61086944  
Conc: 530.86 ng/ml



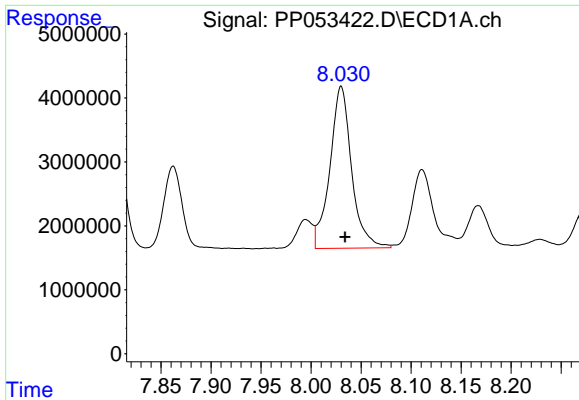
#33 AR-1260-3

R.T.: 7.803 min  
Delta R.T.: -0.004 min  
Response: 31120623  
Conc: 498.98 ng/ml



#33 AR-1260-3

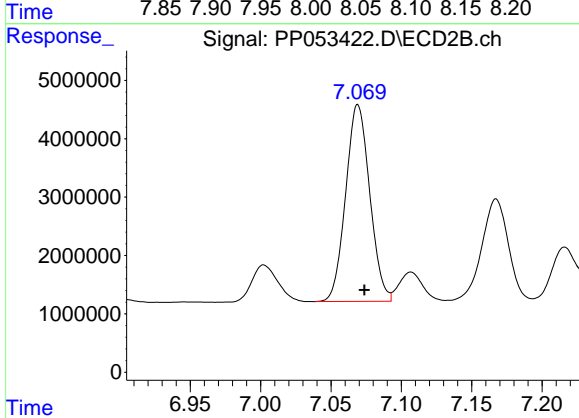
R.T.: 6.592 min  
Delta R.T.: -0.004 min  
Response: 54621968  
Conc: 509.02 ng/ml



#34 AR-1260-4

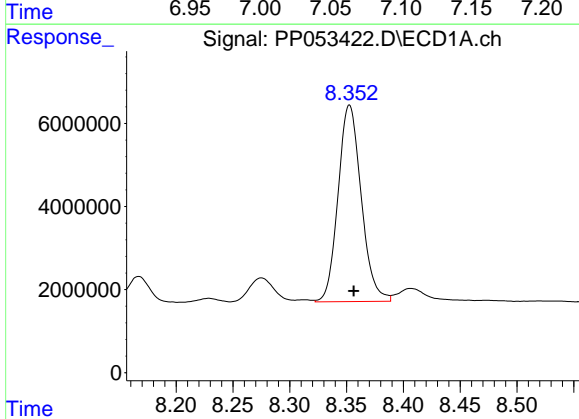
R.T.: 8.030 min  
 Delta R.T.: -0.004 min  
 Response: 38295471  
 Conc: 511.20 ng/ml

Instrument :  
 ECD\_P  
 ClientSampleId :  
 MH-82MS



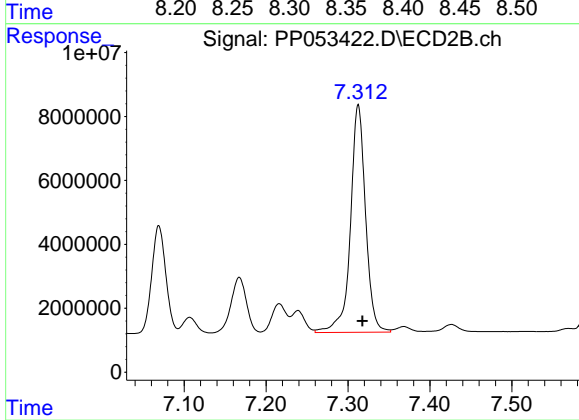
#34 AR-1260-4

R.T.: 7.069 min  
 Delta R.T.: -0.005 min  
 Response: 40161712  
 Conc: 485.43 ng/ml



#35 AR-1260-5

R.T.: 8.353 min  
 Delta R.T.: -0.004 min  
 Response: 67100101  
 Conc: 530.16 ng/ml



#35 AR-1260-5

R.T.: 7.313 min  
 Delta R.T.: -0.005 min  
 Response: 91392179  
 Conc: 482.65 ng/ml