

Data Path : Z:\pestpcbsrv\HPCHEM1\ECD\_P\Data\PP112222\  
 Data File : PP053445.D  
 Signal(s) : Signal #1: ECD1A.ch Signal #2: ECD2B.ch  
 Acq On : 22 Nov 2022 21:11  
 Operator : YP\AJ  
 Sample : I.BLK  
 Misc :  
 ALS Vial : 2 Sample Multiplier: 1

Instrument :  
 ECD\_P  
 ClientSampleId :  
 I.BLK

Integration File signal 1: autoint1.e  
 Integration File signal 2: autoint2.e  
 Quant Time: Nov 23 04:41:09 2022  
 Quant Method : Z:\pestpcbsrv\HPCHEM1\ECD\_P\methods\PP110822.M  
 Quant Title : GC EXTRACTABLES  
 QLast Update : Wed Nov 09 05:50:05 2022  
 Response via : Initial Calibration  
 Integrator: ChemStation

Volume Inj. : 2 µl  
 Signal #1 Phase : ZB-MR1 Signal #2 Phase: ZB-MR2  
 Signal #1 Info : 30Mx0.32mmx 0.50µ Signal #2 Info : 30M x 0.32mm x 0.25µm

Compound	RT#1	RT#2	Resp#1	Resp#2	ng/ml	ng/ml
-----						
System Monitoring Compounds						
1) SA Tetrachlo...	4.400	3.646	39783063	35895447	20.695	23.863
2) SA Decachlor...	10.201	8.723	30211002	36611840	22.280	19.533

Target Compounds

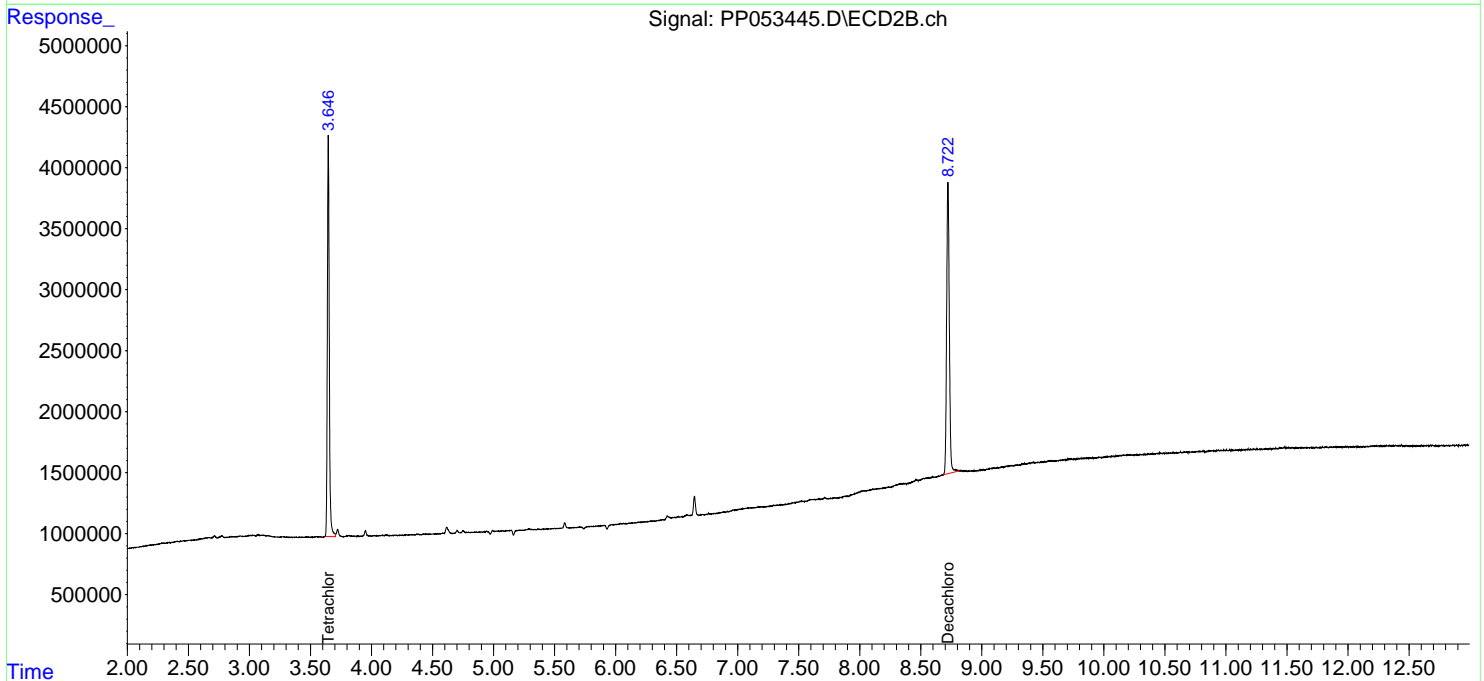
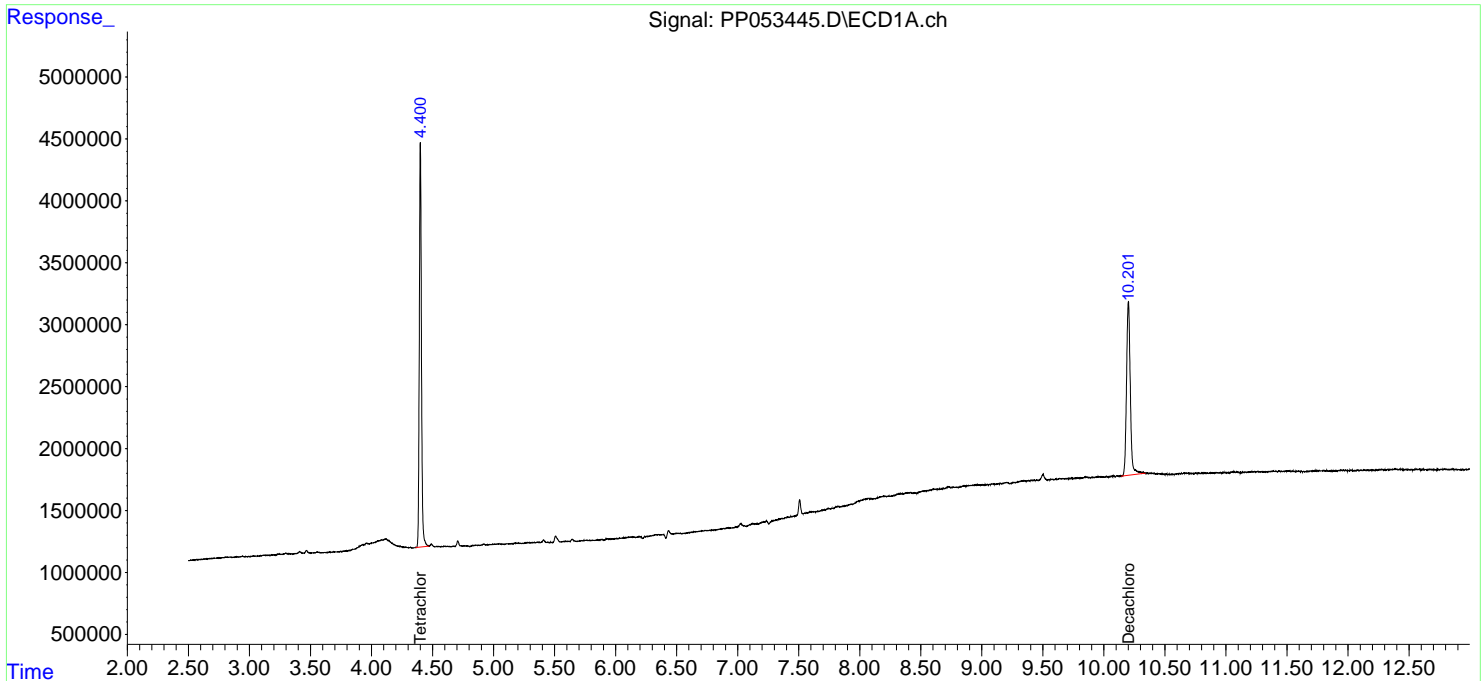
(f)=RT Delta > 1/2 Window (#)=Amounts differ by > 25% (m)=manual int.

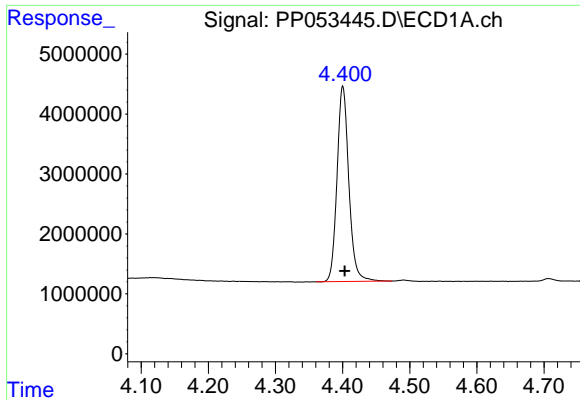
Data Path : Z:\pestpcbsrv\HPCHEM1\ECD\_P\Data\PP112222\  
 Data File : PP053445.D  
 Signal(s) : Signal #1: ECD1A.ch Signal #2: ECD2B.ch  
 Acq On : 22 Nov 2022 21:11  
 Operator : YP\AJ  
 Sample : I.BLK  
 Misc :  
 ALS Vial : 2 Sample Multiplier: 1

Instrument :  
 ECD\_P  
 ClientSampleId :  
 I.BLK

Integration File signal 1: autoint1.e  
 Integration File signal 2: autoint2.e  
 Quant Time: Nov 23 04:41:09 2022  
 Quant Method : Z:\pestpcbsrv\HPCHEM1\ECD\_P\methods\PP110822.M  
 Quant Title : GC EXTRACTABLES  
 QLast Update : Wed Nov 09 05:50:05 2022  
 Response via : Initial Calibration  
 Integrator: ChemStation

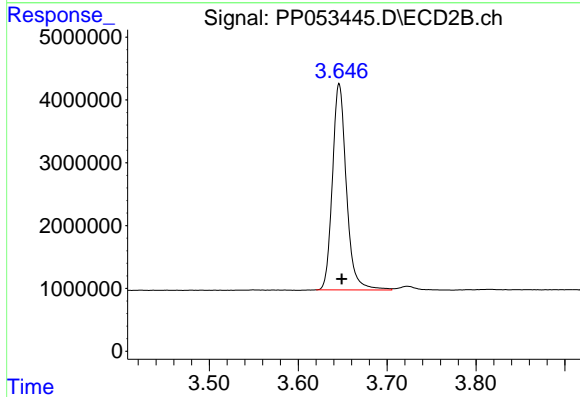
Volume Inj. : 2 µl  
 Signal #1 Phase : ZB-MR1 Signal #2 Phase: ZB-MR2  
 Signal #1 Info : 30Mx0.32mmx 0.50µ Signal #2 Info : 30M x 0.32mm x 0.25µm



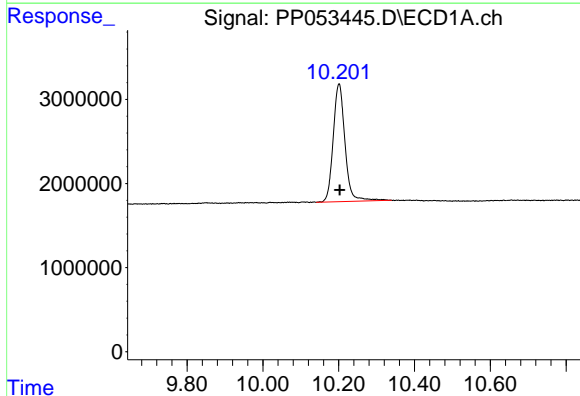


#1 Tetrachloro-m-xylene  
R.T.: 4.400 min  
Delta R.T.: -0.003 min  
Response: 39783063  
Conc: 20.70 ng/ml

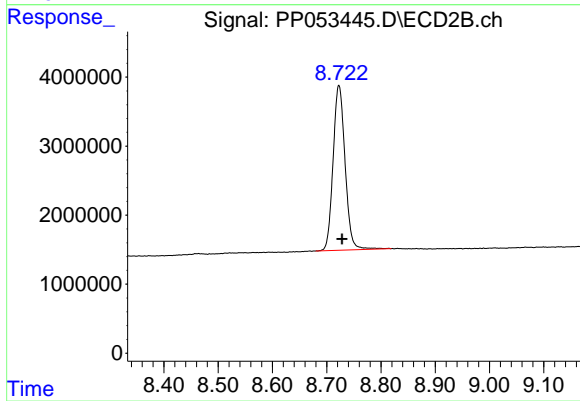
Instrument :  
ECD\_P  
ClientSampleId :  
I.BLK



#1 Tetrachloro-m-xylene  
R.T.: 3.646 min  
Delta R.T.: -0.003 min  
Response: 35895447  
Conc: 23.86 ng/ml



#2 Decachlorobiphenyl  
R.T.: 10.201 min  
Delta R.T.: -0.002 min  
Response: 30211002  
Conc: 22.28 ng/ml



#2 Decachlorobiphenyl  
R.T.: 8.723 min  
Delta R.T.: -0.006 min  
Response: 36611840  
Conc: 19.53 ng/ml