

Data Path : Z:\pestpcbsrv\HPCHEM1\ECD_P\Data\PP112420\
 Data File : PP031668.D
 Signal(s) : Signal #1: ECD1A.CH Signal #2: ECD2B.CH
 Acq On : 25 Nov 2020 10:19
 Operator : DD\AJ
 Sample : L4822-09DL 10X
 Misc :
 ALS Vial : 33 Sample Multiplier: 1

Instrument :
 ECD_P
Client Sampled :
 FD-02DL

Manual Integrations
APPROVED
 Ankita
 12/2/2020 2:28:50 PM

Integration File signal 1: autoint1.e
 Integration File signal 2: autoint2.e
 Quant Time: Nov 30 12:01:24 2020
 Quant Method : Z:\pestpcbsrv\HPCHEM1\ECD_P\methods\PP112220.M
 Quant Title : GC EXTRACTABLES
 QLast Update : Tue Nov 24 12:23:58 2020
 Response via : Initial Calibration
 Integrator: ChemStation 6890 Scale Mode: Small noise peaks clipped

Volume Inj. : 2 µl
 Signal #1 Phase : ZB-MR1 Signal #2 Phase: ZB-MR2
 Signal #1 Info : 30Mx0.32mmx 0.50µ Signal #2 Info : 30M x 0.32mm x 0.25µm

Compound	RT#1	RT#2	Resp#1	Resp#2	ng/ml	ng/ml

System Monitoring Compounds						
1) SA Tetrachlo...	4.788	4.061	90734	77972	1.874	1.627
2) SA Decachlor...	10.658	9.366	86102	140937	2.535	3.806m#
Target Compounds						
36) L8 AR-1262-1	8.403	7.474	408903	482058	179.970	173.450
37) L8 AR-1262-2	8.945	7.984	738767	872356	185.919	179.595
38) L8 AR-1262-3	9.243	8.269	599033	538155	215.382	273.606 #
39) L8 AR-1262-4	9.333	8.335	717927	963947	327.502	265.903
40) L8 AR-1262-5	9.957	8.830	473044	445026	323.998	274.168

(f)=RT Delta > 1/2 Window (#)=Amounts differ by > 25% (m)=manual int.

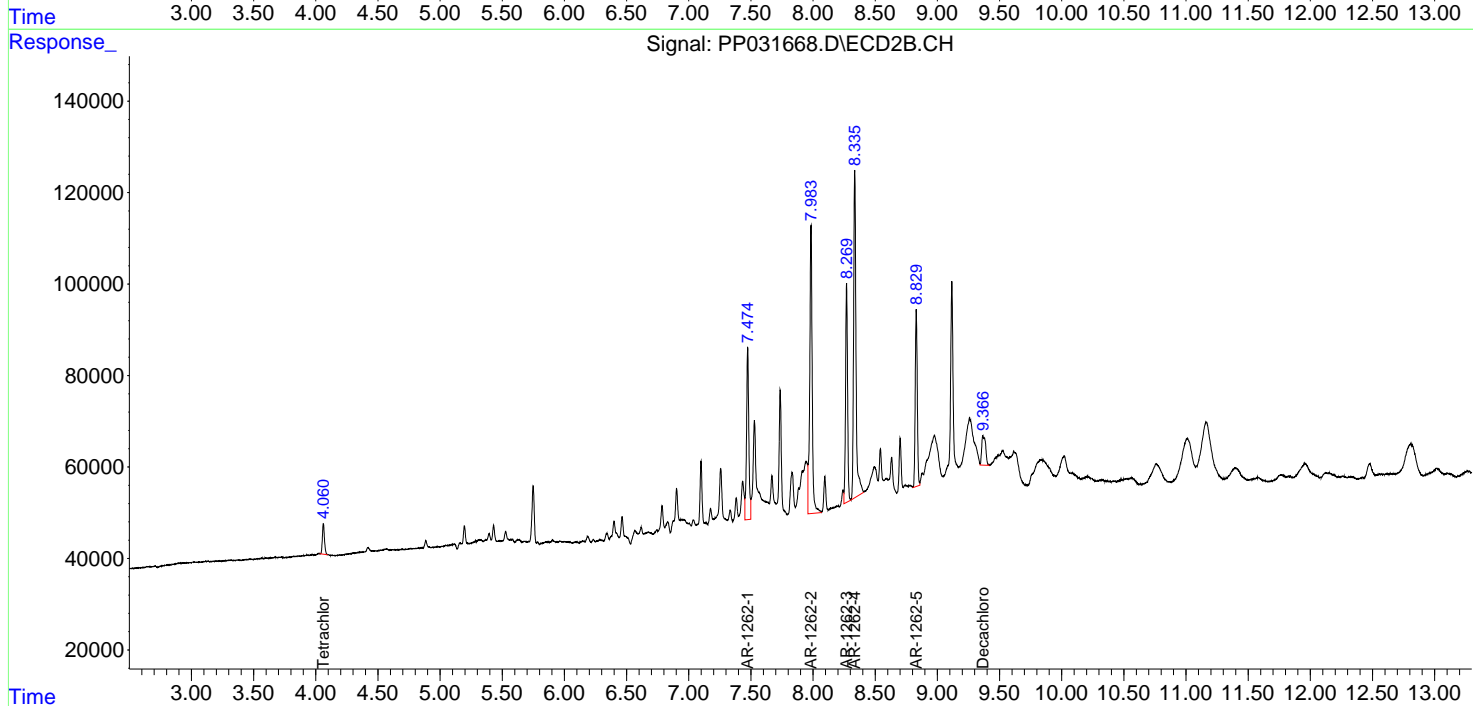
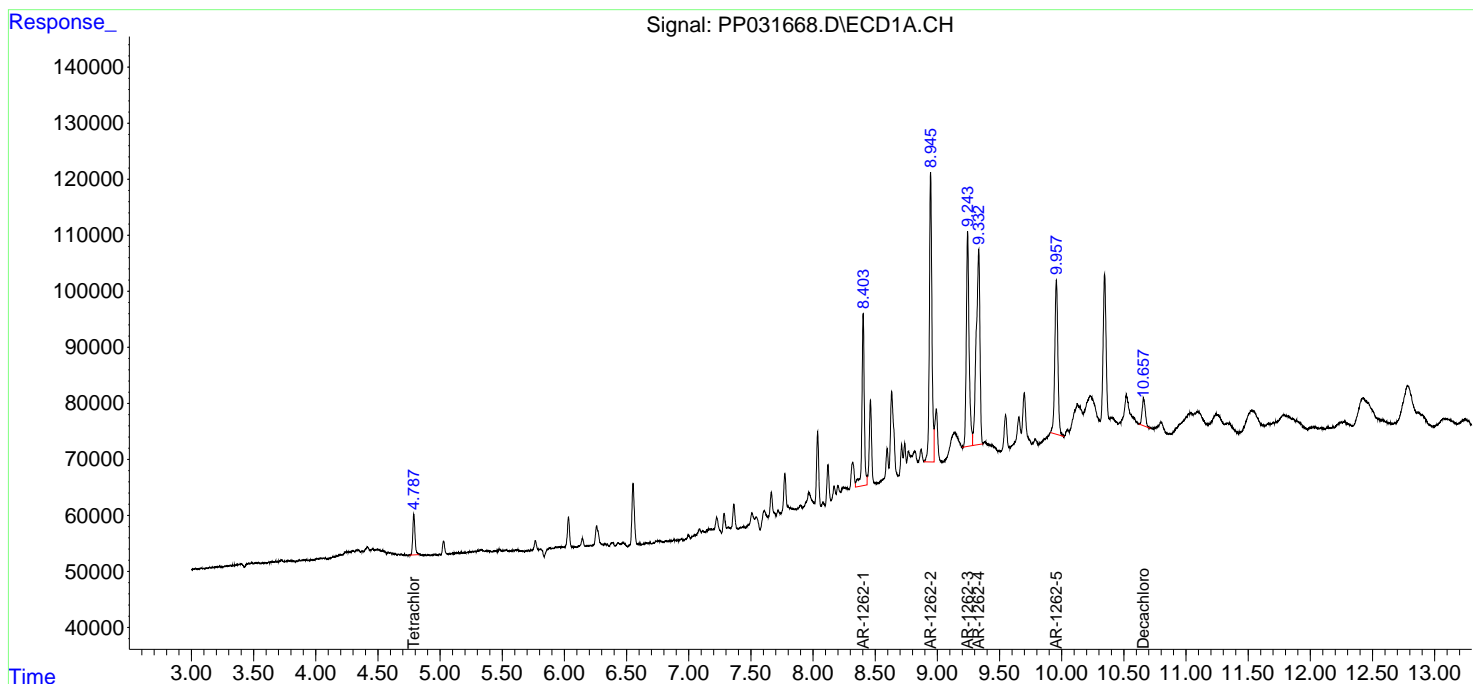
Data Path : Z:\pestpcbsrv\HPCHEM1\ECD_P\Data\PP112420\
 Data File : PP031668.D
 Signal(s) : Signal #1: ECD1A.CH Signal #2: ECD2B.CH
 Acq On : 25 Nov 2020 10:19
 Operator : DD\AJ
 Sample : L4822-09DL 10X
 Misc :
 ALS Vial : 33 Sample Multiplier: 1

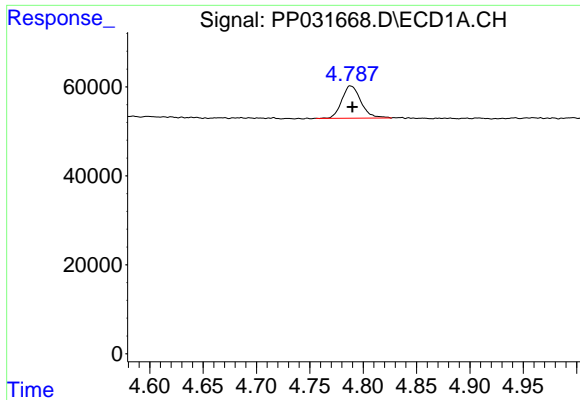
Instrument :
 ECD_P
Client Sampled :
 FD-02DL

Manual Integrations
APPROVED
 Ankita
 12/2/2020 2:28:50 PM

Integration File signal 1: autoint1.e
 Integration File signal 2: autoint2.e
 Quant Time: Nov 30 12:01:24 2020
 Quant Method : Z:\pestpcbsrv\HPCHEM1\ECD_P\methods\PP112220.M
 Quant Title : GC EXTRACTABLES
 QLast Update : Tue Nov 24 12:23:58 2020
 Response via : Initial Calibration
 Integrator: ChemStation 6890 Scale Mode: Small noise peaks clipped

Volume Inj. : 2 µl
 Signal #1 Phase : ZB-MR1 Signal #2 Phase: ZB-MR2
 Signal #1 Info : 30Mx0.32mmx 0.50µ Signal #2 Info : 30M x 0.32mm x 0.25µm

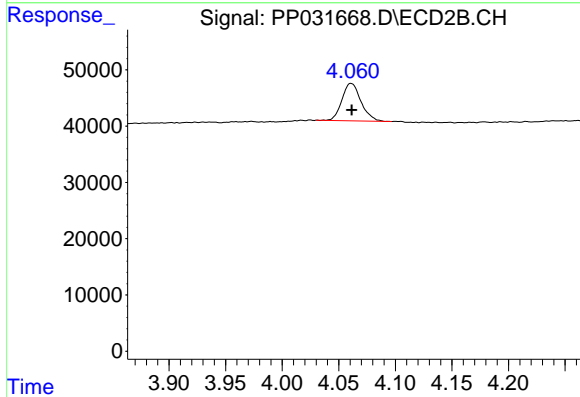




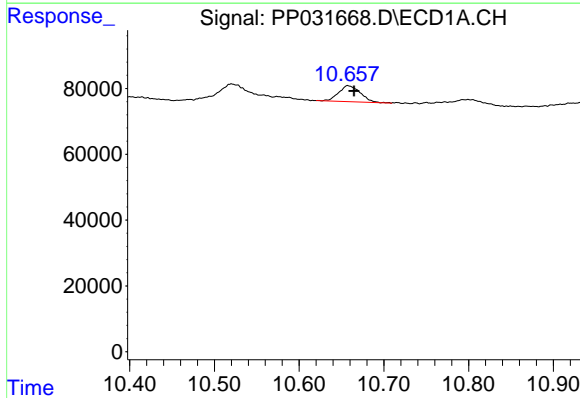
#1 Tetrachloro-m-xylene
 R.T.: 4.788 min
 Delta R.T.: -0.002 min
 Response: 90734
 Conc: 1.87 ng/ml

Instrument :
 ECD_P
 ClientSampled :
 FD-02DL

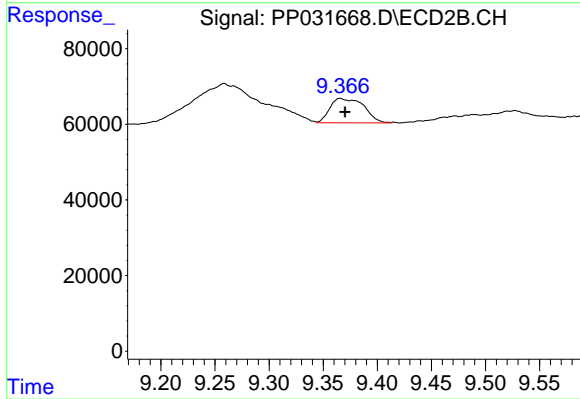
Manual Integrations
APPROVED
 Ankita
 12/2/2020 2:28:50 PM



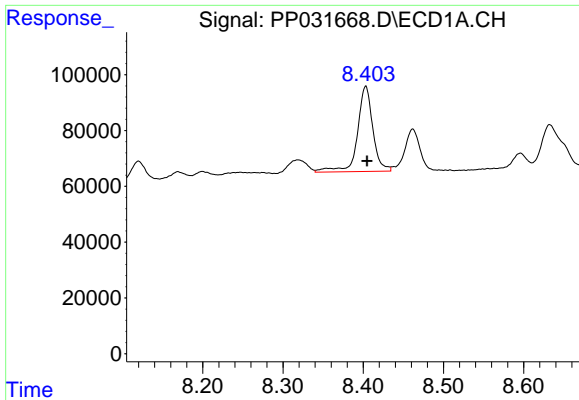
#1 Tetrachloro-m-xylene
 R.T.: 4.061 min
 Delta R.T.: 0.000 min
 Response: 77972
 Conc: 1.63 ng/ml



#2 Decachlorobiphenyl
 R.T.: 10.658 min
 Delta R.T.: -0.007 min
 Response: 86102
 Conc: 2.54 ng/ml



#2 Decachlorobiphenyl
 R.T.: 9.366 min
 Delta R.T.: -0.005 min
 Response: 140937
 Conc: 3.81 ng/ml m

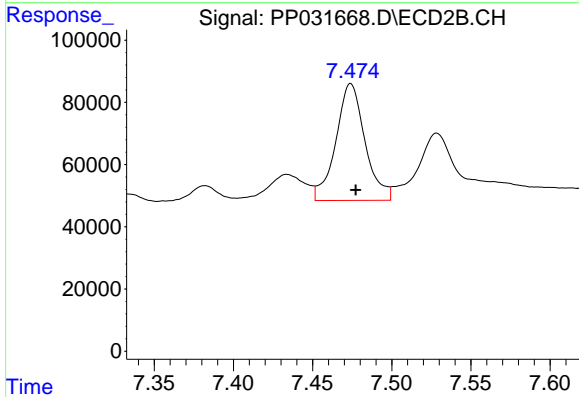


#36 AR-1262-1

R.T.: 8.403 min
 Delta R.T.: -0.002 min
 Response: 408903
 Conc: 179.97 ng/ml

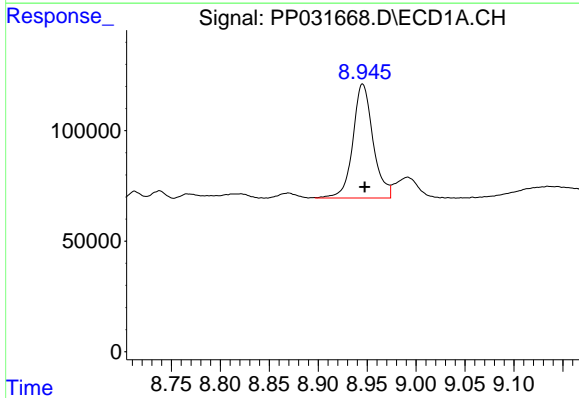
Instrument :
 ECD_P
ClientSampled :
 FD-02DL

Manual Integrations
APPROVED
 Ankita
 12/2/2020 2:28:50 PM



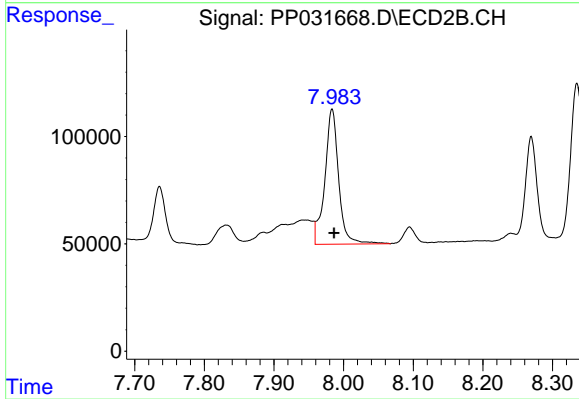
#36 AR-1262-1

R.T.: 7.474 min
 Delta R.T.: -0.003 min
 Response: 482058
 Conc: 173.45 ng/ml



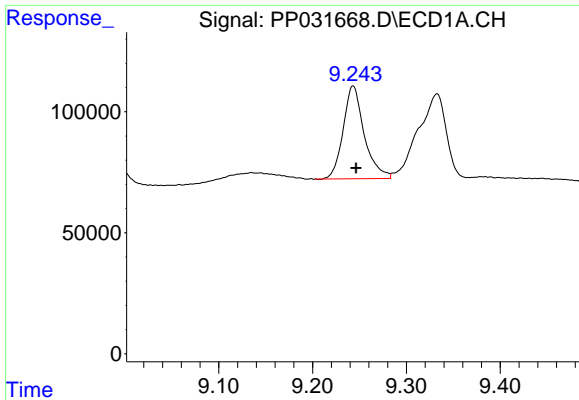
#37 AR-1262-2

R.T.: 8.945 min
 Delta R.T.: -0.002 min
 Response: 738767
 Conc: 185.92 ng/ml



#37 AR-1262-2

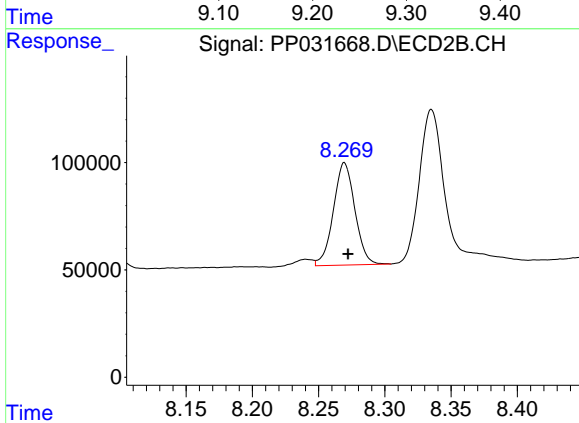
R.T.: 7.984 min
 Delta R.T.: -0.003 min
 Response: 872356
 Conc: 179.60 ng/ml



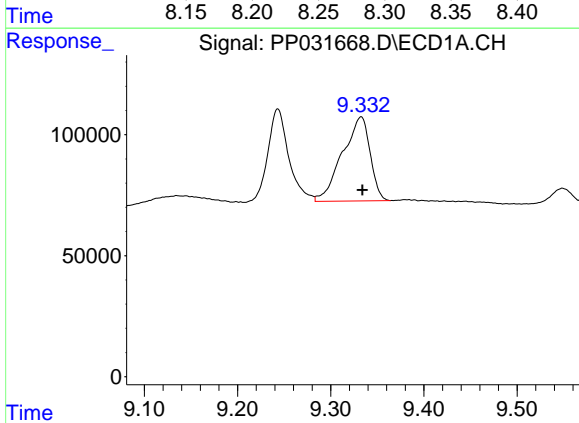
#38 AR-1262-3
 R.T.: 9.243 min
 Delta R.T.: -0.003 min
 Response: 599033
 Conc: 215.38 ng/ml

Instrument :
 ECD_P
 ClientSampled :
 FD-02DL

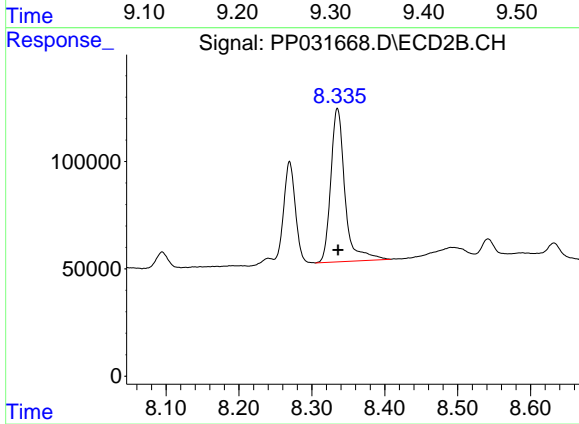
Manual Integrations
 APPROVED
 Ankita
 12/2/2020 2:28:50 PM



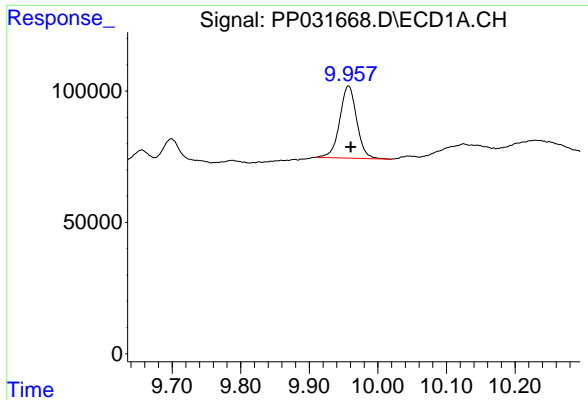
#38 AR-1262-3
 R.T.: 8.269 min
 Delta R.T.: -0.003 min
 Response: 538155
 Conc: 273.61 ng/ml



#39 AR-1262-4
 R.T.: 9.333 min
 Delta R.T.: -0.001 min
 Response: 717927
 Conc: 327.50 ng/ml



#39 AR-1262-4
 R.T.: 8.335 min
 Delta R.T.: 0.000 min
 Response: 963947
 Conc: 265.90 ng/ml



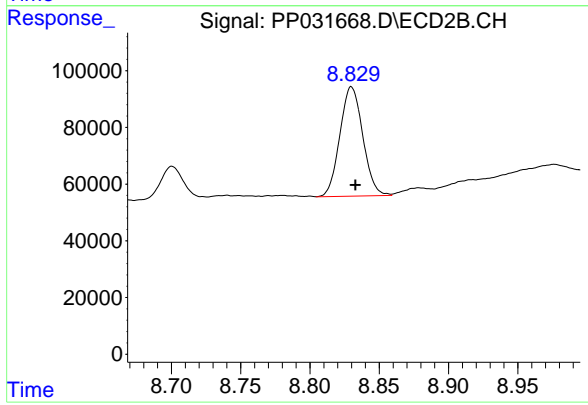
#40 AR-1262-5

R.T.: 9.957 min
Delta R.T.: -0.003 min
Response: 473044
Conc: 324.00 ng/ml

Instrument :
ECD_P
ClientSampled :
FD-02DL

Manual Integrations
APPROVED

Ankita
12/2/2020 2:28:50 PM



#40 AR-1262-5

R.T.: 8.830 min
Delta R.T.: -0.003 min
Response: 445026
Conc: 274.17 ng/ml