

Data Path : Z:\pestpcbsrv\HPCHEM1\ECD_P\Data\PP112421\
 Data File : PP041308.D
 Signal(s) : Signal #1: ECD1A.CH Signal #2: ECD2B.CH
 Acq On : 24 Nov 2021 15:56
 Operator : AJ\MA
 Sample : PB141004BL
 Misc :
 ALS Vial : 19 Sample Multiplier: 1

Instrument :
 ECD_P
 ClientSampleId :
 PB141004BL

Integration File signal 1: autoint1.e
 Integration File signal 2: autoint2.e
 Quant Time: Nov 25 02:29:17 2021
 Quant Method : Z:\pestpcbsrv\HPCHEM1\ECD_P\methods\PP111521.M
 Quant Title : GC EXTRACTABLES
 QLast Update : Tue Nov 16 04:45:00 2021
 Response via : Initial Calibration
 Integrator: ChemStation 6890 Scale Mode: Small noise peaks clipped

Volume Inj. : 2 µl
 Signal #1 Phase : ZB-MR1 Signal #2 Phase: ZB-MR2
 Signal #1 Info : 30Mx0.32mmx 0.50µ Signal #2 Info : 30M x 0.32mm x 0.25µm

Compound	RT#1	RT#2	Resp#1	Resp#2	ng/ml	ng/ml

System Monitoring Compounds						
1) SA Tetrachlo...	4.753	3.756	433609	646355	20.561	23.258
2) SA Decachlor...	10.649	9.014	472815	307283	21.645	21.435

Target Compounds

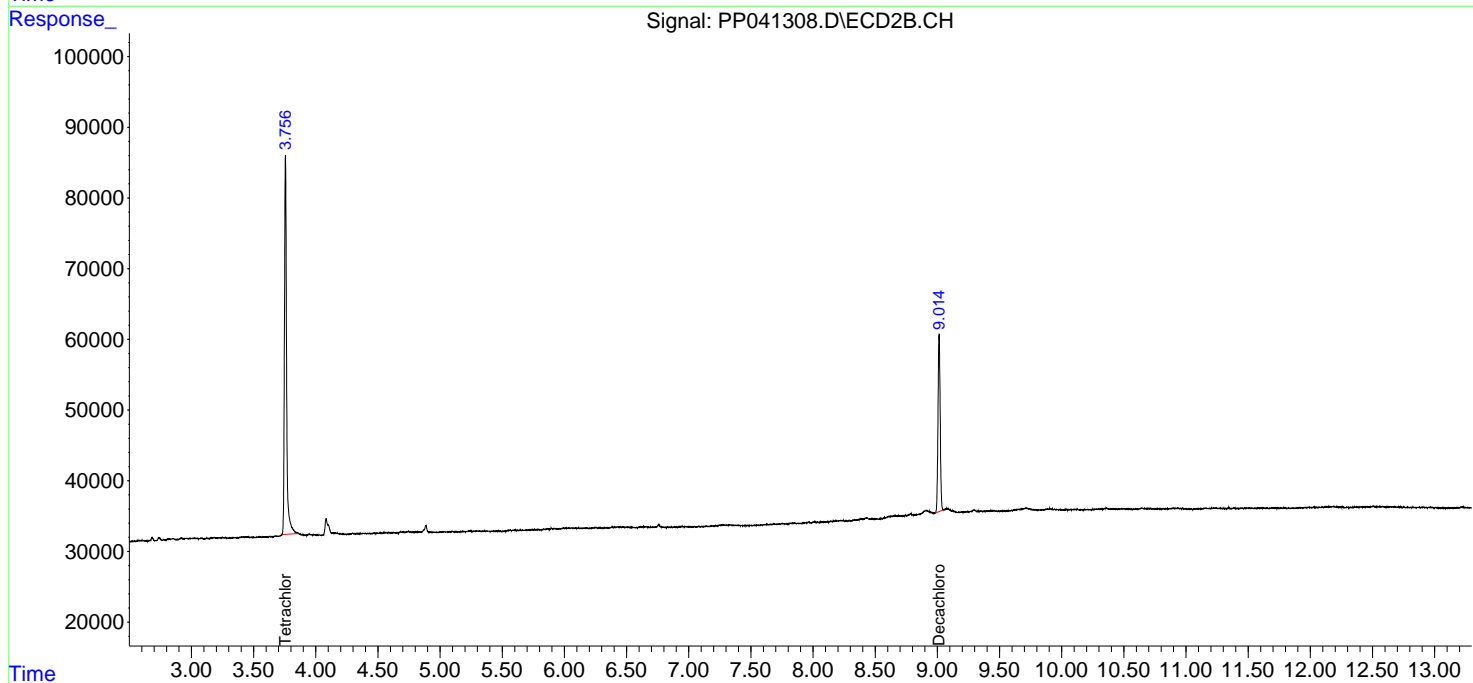
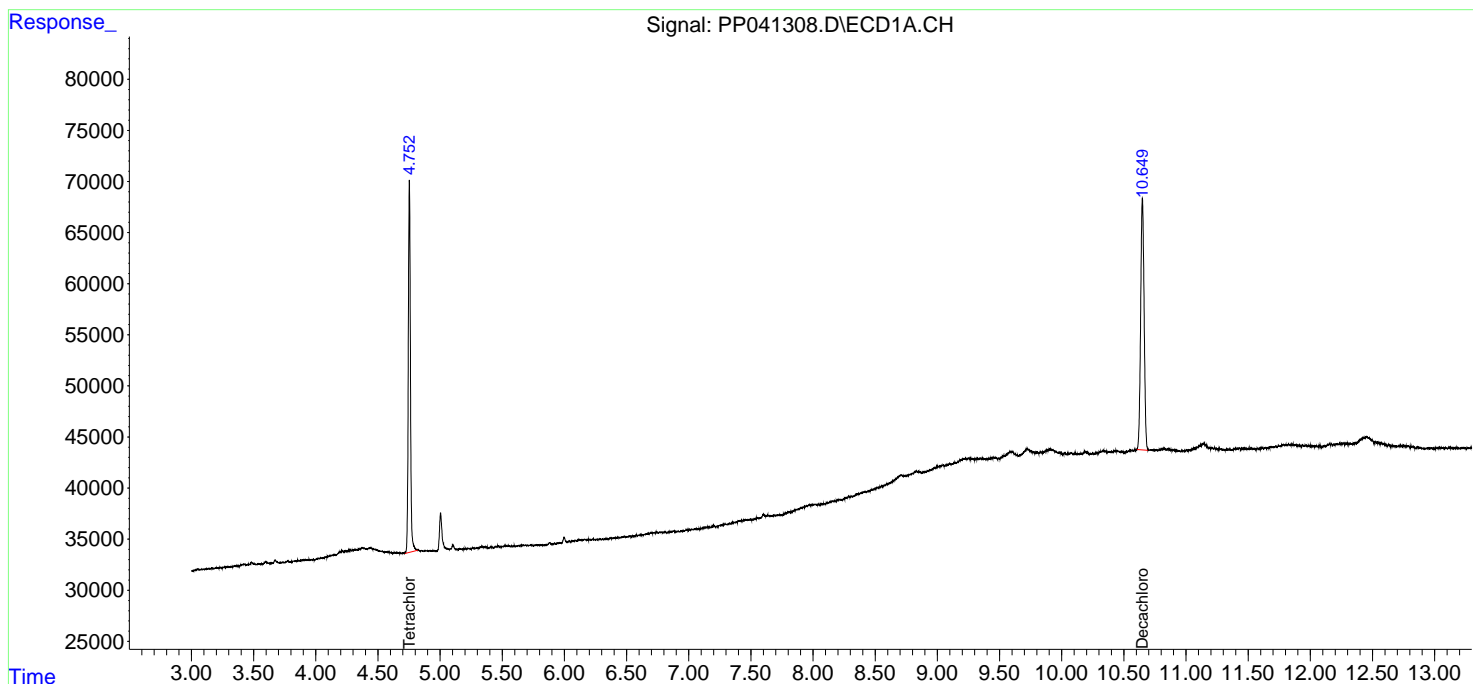
(f)=RT Delta > 1/2 Window (#)=Amounts differ by > 25% (m)=manual int.

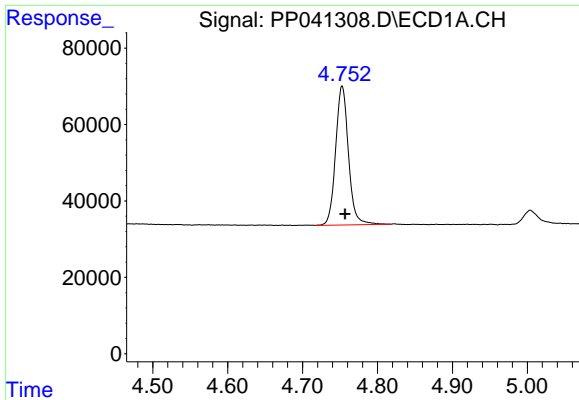
Data Path : Z:\pestpcbsrv\HPCHEM1\ECD_P\Data\PP112421\
 Data File : PP041308.D
 Signal(s) : Signal #1: ECD1A.CH Signal #2: ECD2B.CH
 Acq On : 24 Nov 2021 15:56
 Operator : AJ\MA
 Sample : PB141004BL
 Misc :
 ALS Vial : 19 Sample Multiplier: 1

Instrument :
 ECD_P
 ClientSampleId :
 PB141004BL

Integration File signal 1: autoint1.e
 Integration File signal 2: autoint2.e
 Quant Time: Nov 25 02:29:17 2021
 Quant Method : Z:\pestpcbsrv\HPCHEM1\ECD_P\methods\PP111521.M
 Quant Title : GC EXTRACTABLES
 QLast Update : Tue Nov 16 04:45:00 2021
 Response via : Initial Calibration
 Integrator: ChemStation 6890 Scale Mode: Small noise peaks clipped

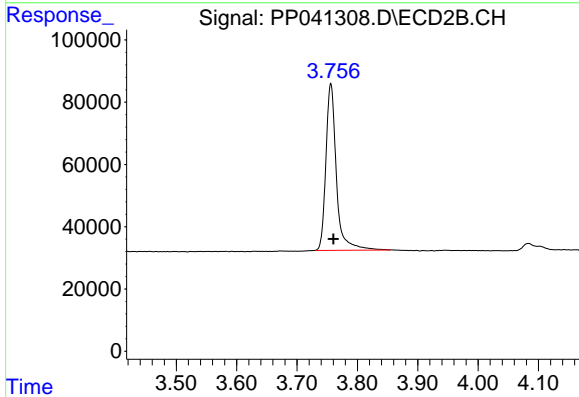
Volume Inj. : 2 µl
 Signal #1 Phase : ZB-MR1 Signal #2 Phase: ZB-MR2
 Signal #1 Info : 30Mx0.32mmx 0.50µ Signal #2 Info : 30M x 0.32mm x 0.25µm



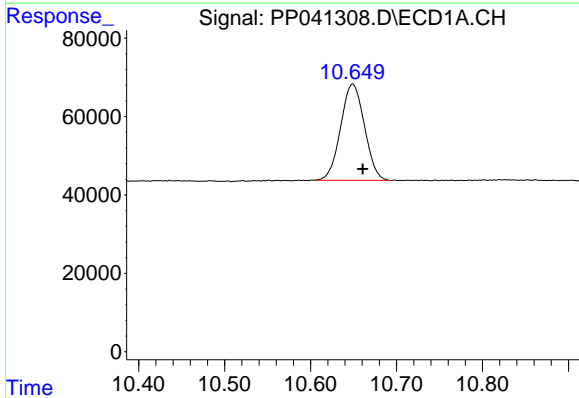


#1 Tetrachloro-m-xylene
 R.T.: 4.753 min
 Delta R.T.: -0.004 min
 Response: 433609
 Conc: 20.56 ng/ml

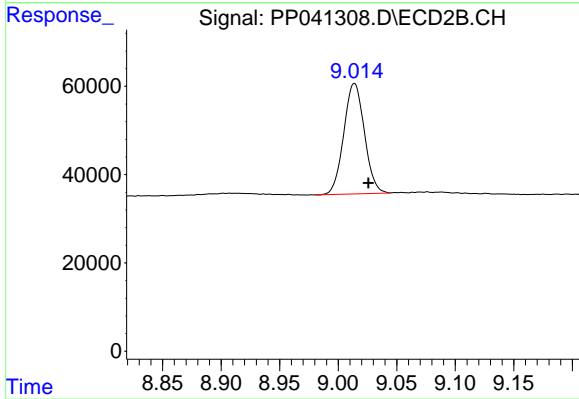
Instrument :
 ECD_P
 ClientSampleId :
 PB141004BL



#1 Tetrachloro-m-xylene
 R.T.: 3.756 min
 Delta R.T.: -0.004 min
 Response: 646355
 Conc: 23.26 ng/ml



#2 Decachlorobiphenyl
 R.T.: 10.649 min
 Delta R.T.: -0.012 min
 Response: 472815
 Conc: 21.65 ng/ml



#2 Decachlorobiphenyl
 R.T.: 9.014 min
 Delta R.T.: -0.012 min
 Response: 307283
 Conc: 21.44 ng/ml