

Data Path : Z:\pestpcbsrv\HPCHEM1\ECD_P\Data\PP112520\
 Data File : PP031685.D
 Signal(s) : Signal #1: ECD1A.CH Signal #2: ECD2B.CH
 Acq On : 25 Nov 2020 15:01
 Operator : DD\AJ
 Sample : L4850-15
 Misc :
 ALS Vial : 13 Sample Multiplier: 1

Instrument :
 ECD_P
 ClientSampleId :
 WOOSPK-036-0204

Integration File signal 1: autoint1.e
 Integration File signal 2: autoint2.e
 Quant Time: Nov 27 00:38:07 2020
 Quant Method : Z:\pestpcbsrv\HPCHEM1\ECD_P\methods\PP112220.M
 Quant Title : GC EXTRACTABLES
 QLast Update : Tue Nov 24 12:23:58 2020
 Response via : Initial Calibration
 Integrator: ChemStation 6890 Scale Mode: Small noise peaks clipped

Volume Inj. : 2 µl
 Signal #1 Phase : ZB-MR1 Signal #2 Phase: ZB-MR2
 Signal #1 Info : 30Mx0.32mmx 0.50µ Signal #2 Info : 30M x 0.32mm x 0.25µm

Compound	RT#1	RT#2	Resp#1	Resp#2	ng/ml	ng/ml

System Monitoring Compounds						
1) SA Tetrachlo...	4.789	4.063	642159	767858	13.261	16.024
2) SA Decachlor...	10.661	9.365	1140771	996311	33.588	26.908
Target Compounds						
3) L1 AR-1016-1	6.093	5.317	86701	114993	57.198	77.817 #
4) L1 AR-1016-2	6.117	5.337	229982	142572	101.851	65.571 #
5) L1 AR-1016-3	6.183	5.528	146774	107082	106.240	91.620
6) L1 AR-1016-4	6.287	5.580	141307	107746	121.605	123.436
7) L1 AR-1016-5	6.601	5.809	-2522	124638	N.D.	109.581 #
8) L2 AR-1221-1	5.031	4.318	64719	57608	119.003	113.548
9) L2 AR-1221-2	5.135	4.417	59205	73291	142.745	189.995 #
10) L2 AR-1221-3	5.219	4.507	202179	98149	164.199	81.370 #
11) L3 AR-1232-1	5.219	4.507	202179	98149	193.799	94.474 #
12) L3 AR-1232-2	5.803	5.337	101459	142572	187.100	146.404
13) L3 AR-1232-3	6.117	5.528	229982	107082	227.728	203.045
14) L3 AR-1232-4	6.287	5.626	141307	95257	266.502	225.554
15) L3 AR-1232-5	6.387	5.809	99482	124638	309.688	430.102 #
16) L4 AR-1242-1	6.093	5.317	86701	114993	72.451	100.729 #
17) L4 AR-1242-2	6.117	5.337	229982	142572	129.256	84.777 #
18) L4 AR-1242-3	6.183	5.528	146774	107082	131.822	117.269
19) L4 AR-1242-4	6.287	5.626	141307	95257	152.896	113.401 #
20) L4 AR-1242-5	7.070	6.190	170290	340818	185.879	330.335 #
21) L5 AR-1248-1	6.093	5.317	86701	114993	93.891	133.509 #
22) L5 AR-1248-2	6.387	5.580	99482	107746	84.103	90.239
23) L5 AR-1248-3	6.601	5.626	-2522	95257	N.D.	75.259 #
24) L5 AR-1248-4	7.029	5.809	118781	124638	75.743	81.353
25) L5 AR-1248-5	7.070	6.231	170290	158137	107.271	108.386
26) L6 AR-1254-1	6.999	6.190	225988	340818	148.300	157.552
27) L6 AR-1254-2	7.228	6.348	555450	240124	239.167	128.892 #
28) L6 AR-1254-3	7.611	6.786f	554198	1236607	219.368	400.034 #
29) L6 AR-1254-4	7.900	7.007	376383	155169	221.819	91.335 #
30) L6 AR-1254-5	8.321	7.434	1856132	1594673	992.896	590.711 #
31) L7 AR-1260-1	7.774	6.904	2079383	1571668	1188.190	795.343 #
32) L7 AR-1260-2	8.038	7.100	3380899	2786663	1645.413	1144.305 #
33) L7 AR-1260-3	8.404	7.258	6661314	2307415	4084.103	1010.412 #
34) L7 AR-1260-4	8.634	7.737	5058871	5374655	2747.374	2828.590
35) L7 AR-1260-5	8.947	7.985	12424244	14181277	3369.549	3125.041
36) L8 AR-1262-1	8.404	7.475	6661314	7319969	2931.840	2633.815
37) L8 AR-1262-2	8.947	7.985	12424244	14181277	3126.699	2919.553
38) L8 AR-1262-3	9.244	8.271	11481243	10330832	4128.065	5252.346 #
39) L8 AR-1262-4	9.334	8.336	14703016	17819247	6707.180	4915.405 #
40) L8 AR-1262-5	9.958	8.831	8736757	9318474	5983.995	5740.847
41) L9 AR-1268-1	9.244	8.271	11481243	10330832	2389.157	1867.111
42) L9 AR-1268-2	9.334	8.336	14703016	17819247	3158.432	3295.773

Data Path : Z:\pestpcbsrv\HPCHEM1\ECD_P\Data\PP112520\
 Data File : PP031685.D
 Signal(s) : Signal #1: ECD1A.CH Signal #2: ECD2B.CH
 Acq On : 25 Nov 2020 15:01
 Operator : DD\AJ
 Sample : L4850-15
 Misc :
 ALS Vial : 13 Sample Multiplier: 1

Instrument :
 ECD_P
 ClientSampleId :
 WOOSPK-036-0204

Integration File signal 1: autoint1.e
 Integration File signal 2: autoint2.e
 Quant Time: Nov 27 00:38:07 2020
 Quant Method : Z:\pestpcbsrv\HPCHEM1\ECD_P\methods\PP112220.M
 Quant Title : GC EXTRACTABLES
 QLast Update : Tue Nov 24 12:23:58 2020
 Response via : Initial Calibration
 Integrator: ChemStation 6890 Scale Mode: Small noise peaks clipped

Volume Inj. : 2 µl
 Signal #1 Phase : ZB-MR1 Signal #2 Phase: ZB-MR2
 Signal #1 Info : 30Mx0.32mmx 0.50µ Signal #2 Info : 30M x 0.32mm x 0.25µm

	Compound	RT#1	RT#2	Resp#1	Resp#2	ng/ml	ng/ml
43)	L9 AR-1268-3	9.550	8.542	2269305	1870365	561.185	407.785 #
44)	L9 AR-1268-4	9.958	8.831	8736757	9318474	5624.695	5112.440
45)	L9 AR-1268-5	10.348	9.117	9930992	10732552	814.120	775.049

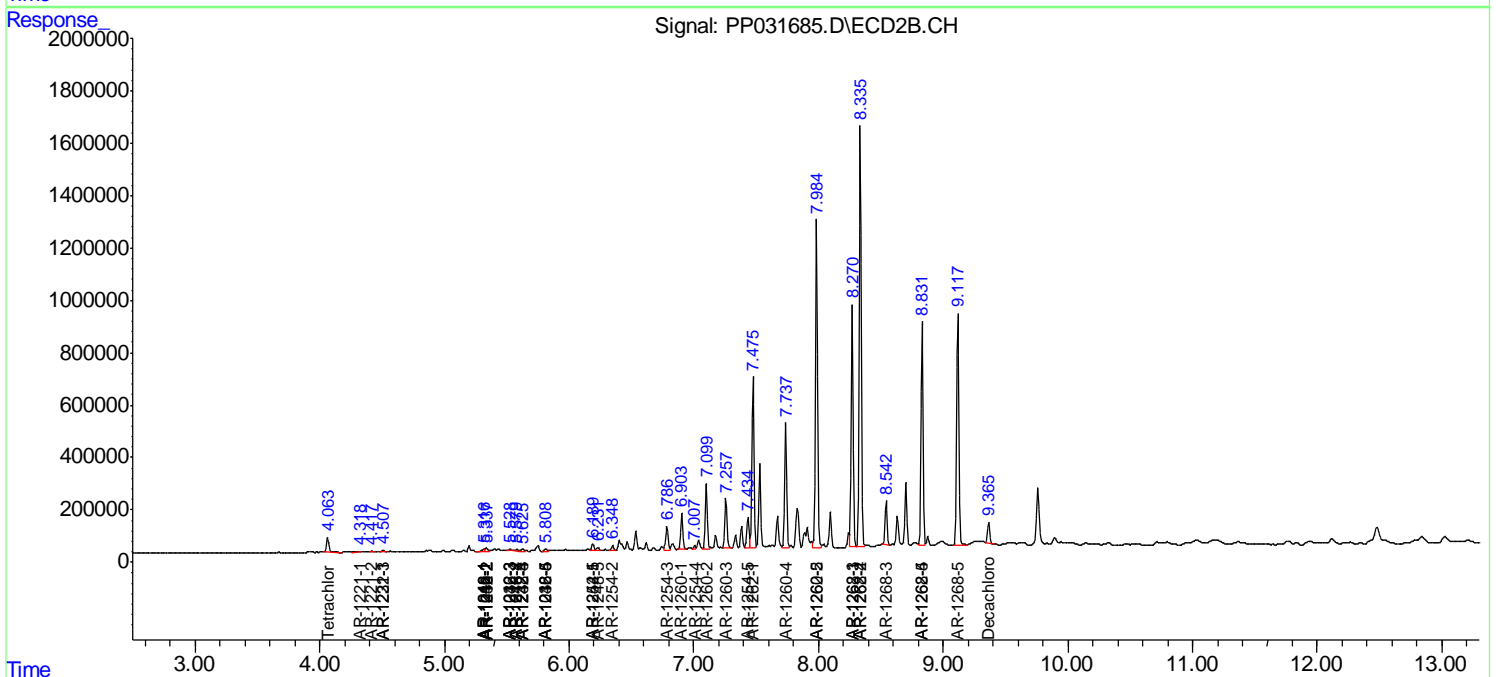
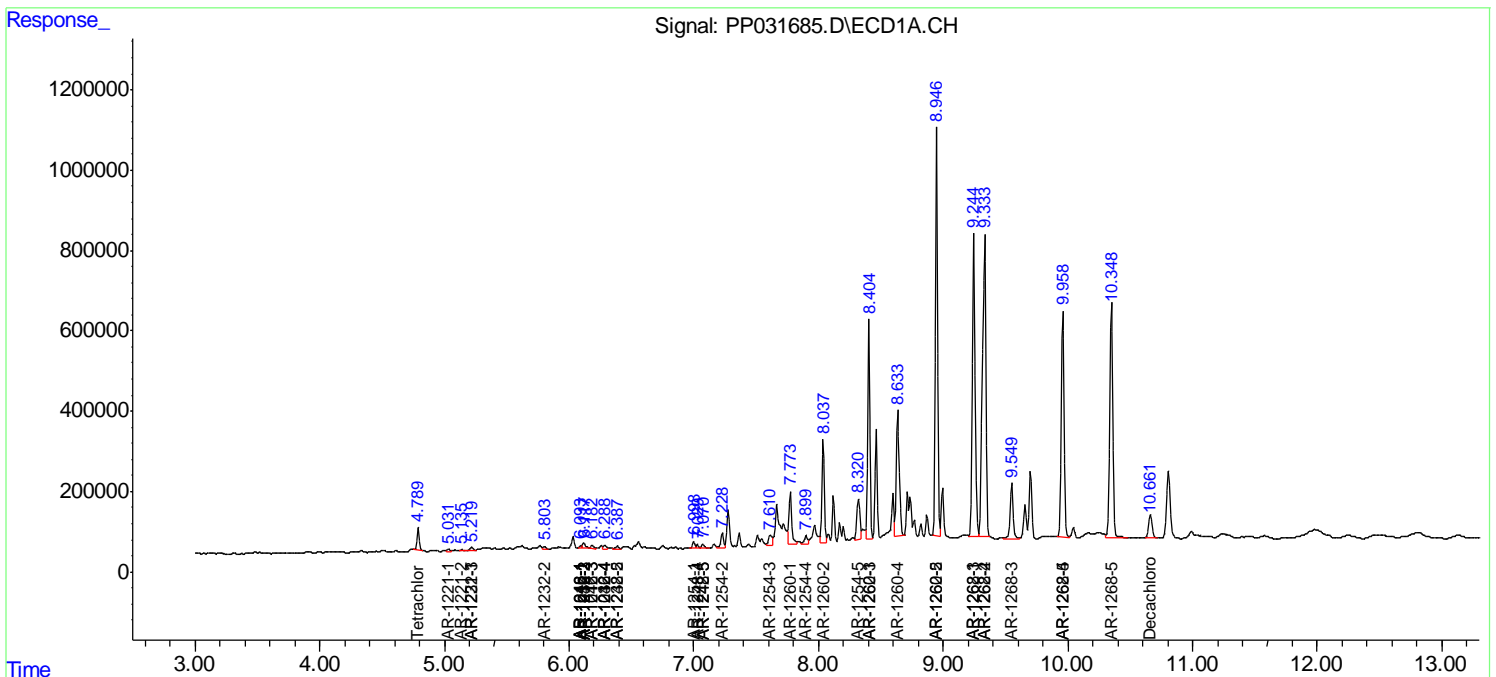
(f)=RT Delta > 1/2 Window (#)=Amounts differ by > 25% (m)=manual int.

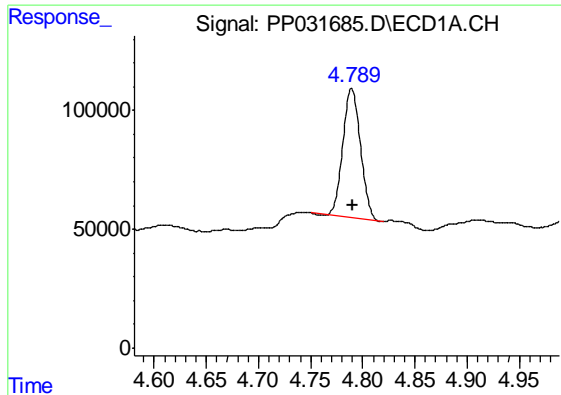
Data Path : Z:\pestpcbsrv\HPCHEM1\ECD_P\Data\PP112520\
 Data File : PP031685.D
 Signal(s) : Signal #1: ECD1A.CH Signal #2: ECD2B.CH
 Acq On : 25 Nov 2020 15:01
 Operator : DD\AJ
 Sample : L4850-15
 Misc :
 ALS Vial : 13 Sample Multiplier: 1

Instrument :
 ECD_P
Client Sampled :
 WOOSPK-036-0204

Integration File signal 1: autoint1.e
 Integration File signal 2: autoint2.e
 Quant Time: Nov 27 00:38:07 2020
 Quant Method : Z:\pestpcbsrv\HPCHEM1\ECD_P\methods\PP112220.M
 Quant Title : GC EXTRACTABLES
 QLast Update : Tue Nov 24 12:23:58 2020
 Response via : Initial Calibration
 Integrator: ChemStation 6890 Scale Mode: Small noise peaks clipped

Volume Inj. : 2 µl
 Signal #1 Phase : ZB-MR1 Signal #2 Phase: ZB-MR2
 Signal #1 Info : 30Mx0.32mmx 0.50µ Signal #2 Info : 30M x 0.32mm x 0.25µm

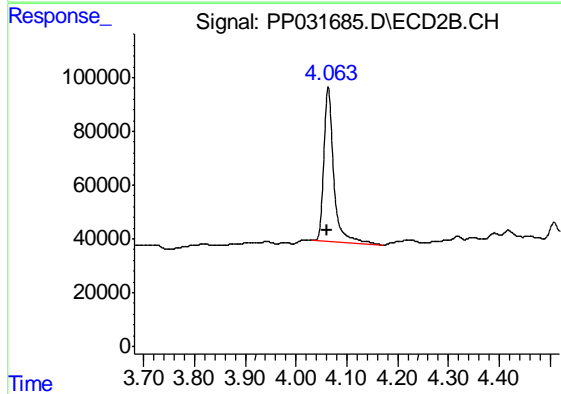




#1 Tetrachloro-m-xylene

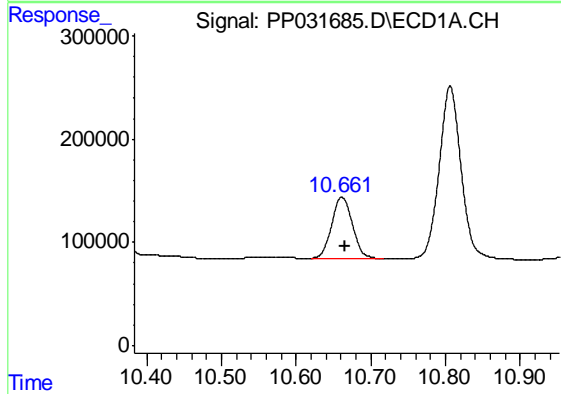
R.T.: 4.789 min
 Delta R.T.: 0.000 min
 Response: 642159
 Conc: 13.26 ng/ml

Instrument :
 ECD_P
 ClientSampleId :
 WOOSPK-036-0204



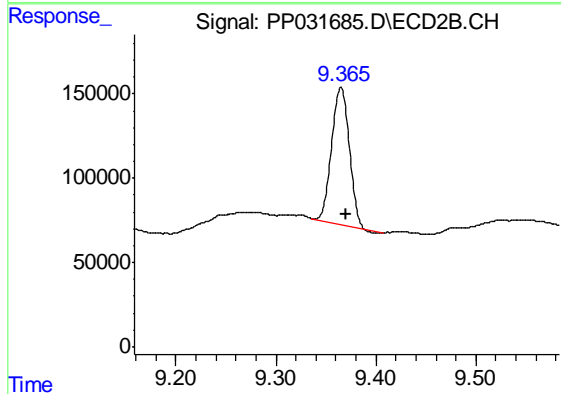
#1 Tetrachloro-m-xylene

R.T.: 4.063 min
 Delta R.T.: 0.002 min
 Response: 767858
 Conc: 16.02 ng/ml



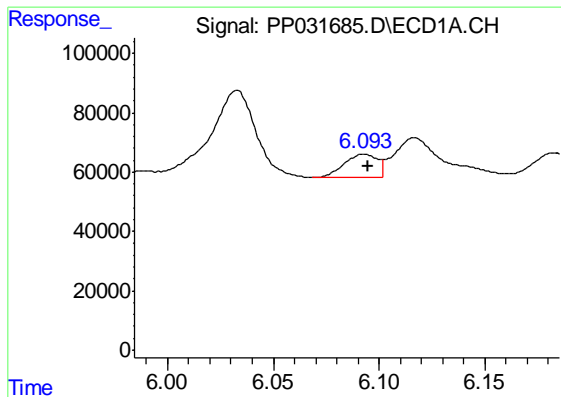
#2 Decachlorobiphenyl

R.T.: 10.661 min
 Delta R.T.: -0.004 min
 Response: 1140771
 Conc: 33.59 ng/ml



#2 Decachlorobiphenyl

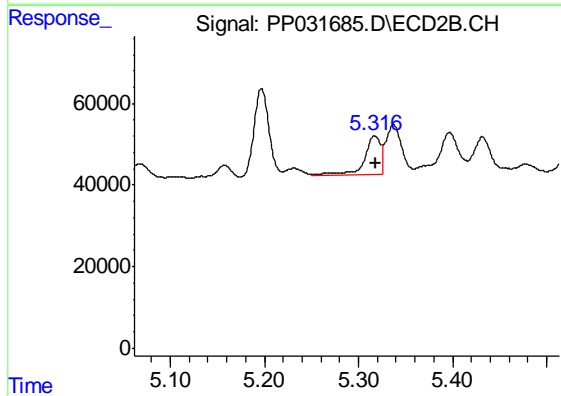
R.T.: 9.365 min
 Delta R.T.: -0.005 min
 Response: 996311
 Conc: 26.91 ng/ml



#3 AR-1016-1

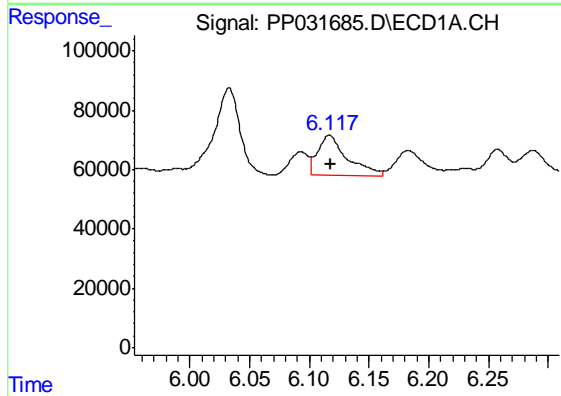
R.T.: 6.093 min
 Delta R.T.: -0.002 min
 Response: 86701
 Conc: 57.20 ng/ml

Instrument :
 ECD_P
 ClientSampleId :
 WOOSPK-036-0204



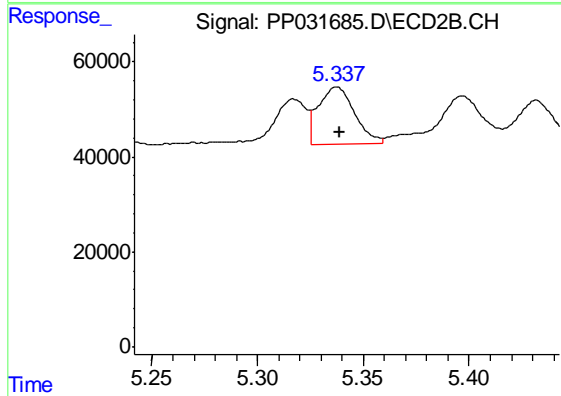
#3 AR-1016-1

R.T.: 5.317 min
 Delta R.T.: -0.001 min
 Response: 114993
 Conc: 77.82 ng/ml



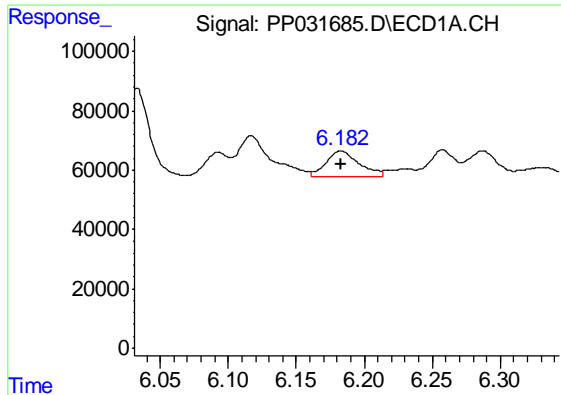
#4 AR-1016-2

R.T.: 6.117 min
 Delta R.T.: -0.001 min
 Response: 229982
 Conc: 101.85 ng/ml



#4 AR-1016-2

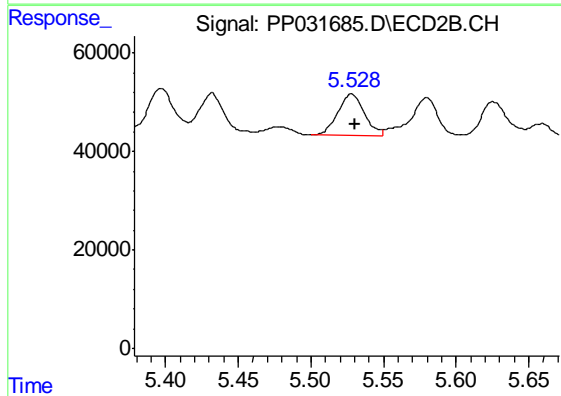
R.T.: 5.337 min
 Delta R.T.: -0.002 min
 Response: 142572
 Conc: 65.57 ng/ml



#5 AR-1016-3

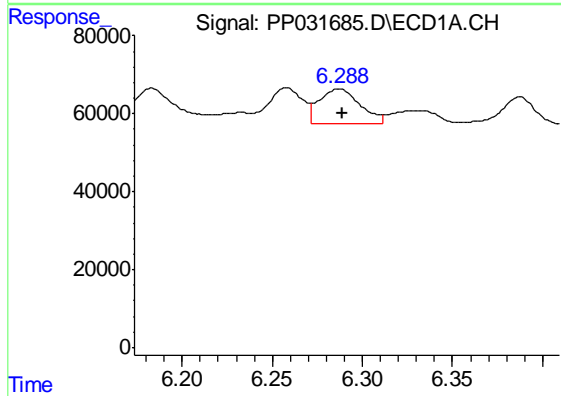
R.T.: 6.183 min
 Delta R.T.: 0.000 min
 Response: 146774
 Conc: 106.24 ng/ml

Instrument :
 ECD_P
 ClientSampleId :
 WOOSPK-036-0204



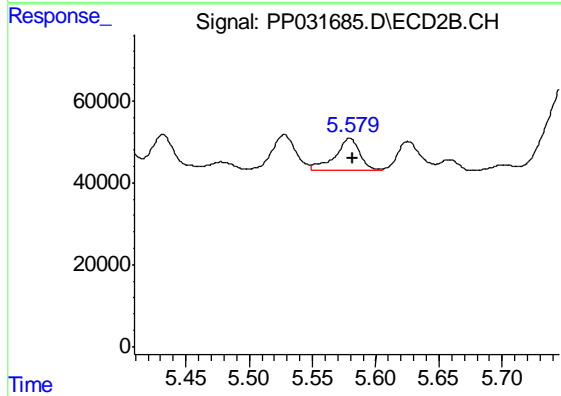
#5 AR-1016-3

R.T.: 5.528 min
 Delta R.T.: -0.003 min
 Response: 107082
 Conc: 91.62 ng/ml



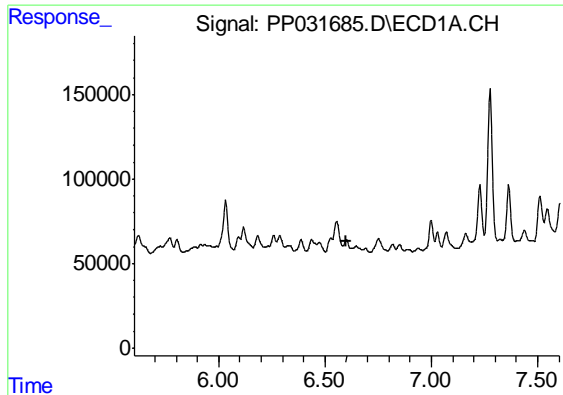
#6 AR-1016-4

R.T.: 6.287 min
 Delta R.T.: -0.002 min
 Response: 141307
 Conc: 121.60 ng/ml



#6 AR-1016-4

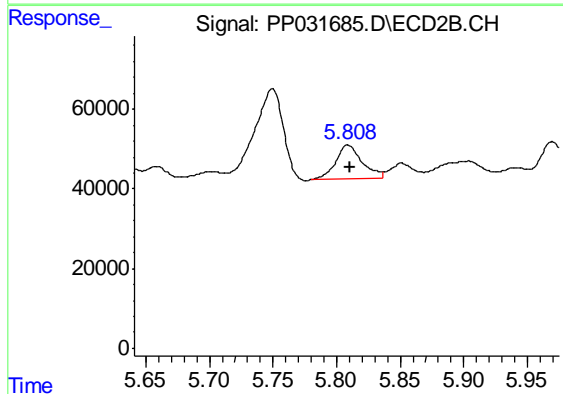
R.T.: 5.580 min
 Delta R.T.: -0.002 min
 Response: 107746
 Conc: 123.44 ng/ml



#7 AR-1016-5

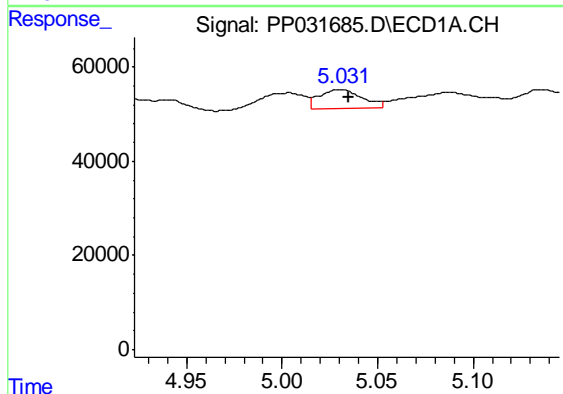
R.T.: 6.601 min
 Delta R.T.: -0.002 min
 Response: -2522
 Conc: N.D.

Instrument :
 ECD_P
 ClientSampleId :
 WOOSPK-036-0204



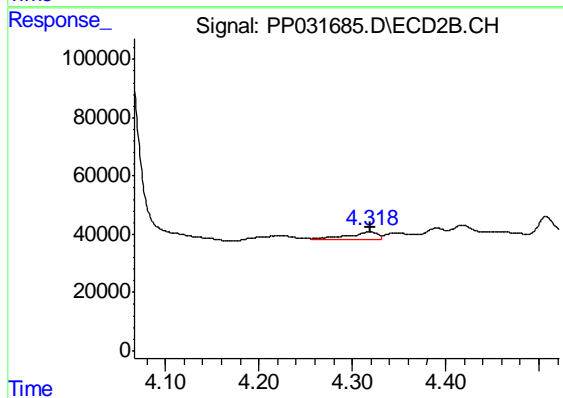
#7 AR-1016-5

R.T.: 5.809 min
 Delta R.T.: -0.002 min
 Response: 124638
 Conc: 109.58 ng/ml



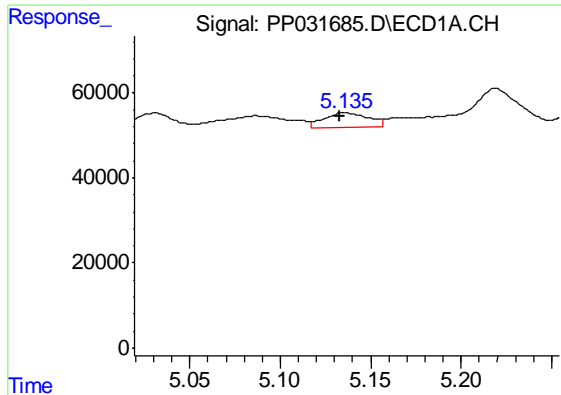
#8 AR-1221-1

R.T.: 5.031 min
 Delta R.T.: -0.004 min
 Response: 64719
 Conc: 119.00 ng/ml



#8 AR-1221-1

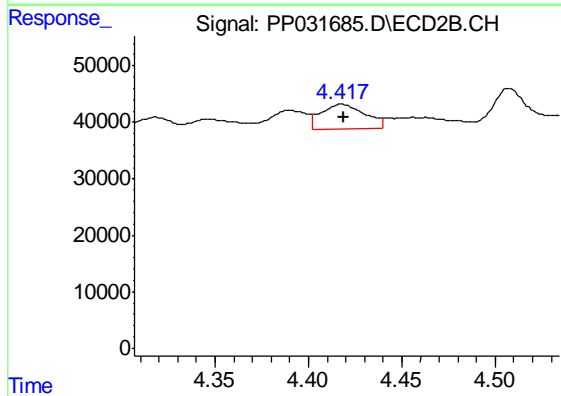
R.T.: 4.318 min
 Delta R.T.: 0.000 min
 Response: 57608
 Conc: 113.55 ng/ml



#9 AR-1221-2

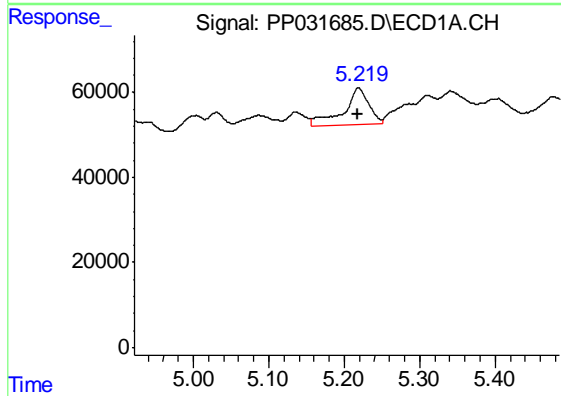
R.T.: 5.135 min
 Delta R.T.: 0.003 min
 Response: 59205
 Conc: 142.75 ng/ml

Instrument :
 ECD_P
 ClientSampleId :
 WOOSPK-036-0204



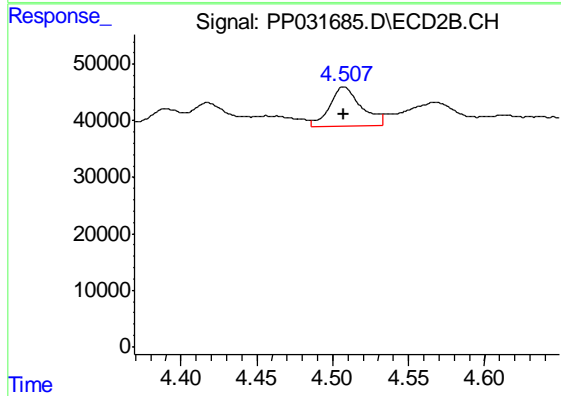
#9 AR-1221-2

R.T.: 4.417 min
 Delta R.T.: -0.001 min
 Response: 73291
 Conc: 190.00 ng/ml



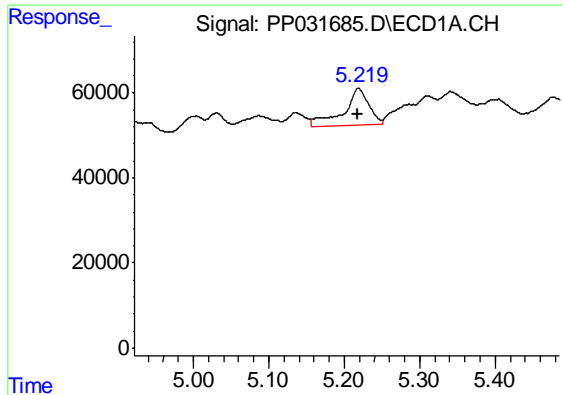
#10 AR-1221-3

R.T.: 5.219 min
 Delta R.T.: 0.001 min
 Response: 202179
 Conc: 164.20 ng/ml



#10 AR-1221-3

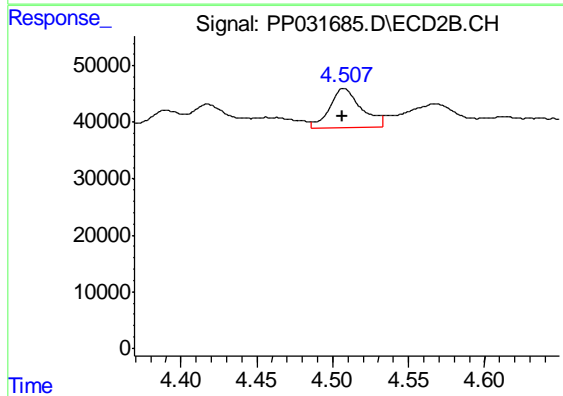
R.T.: 4.507 min
 Delta R.T.: 0.000 min
 Response: 98149
 Conc: 81.37 ng/ml



#11 AR-1232-1

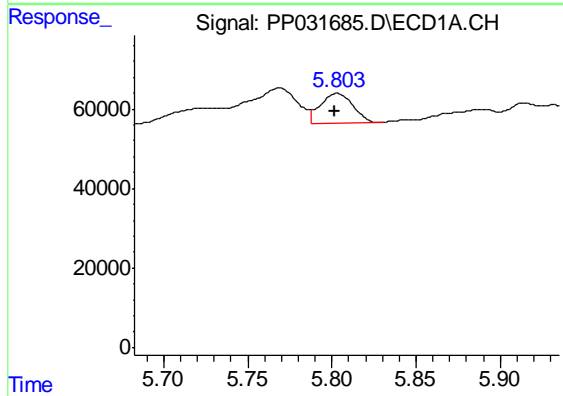
R.T.: 5.219 min
 Delta R.T.: 0.001 min
 Response: 202179
 Conc: 193.80 ng/ml

Instrument :
 ECD_P
 ClientSampleId :
 WOOSPK-036-0204



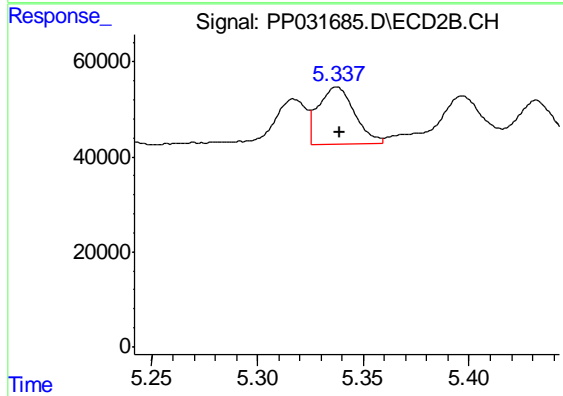
#11 AR-1232-1

R.T.: 4.507 min
 Delta R.T.: 0.000 min
 Response: 98149
 Conc: 94.47 ng/ml



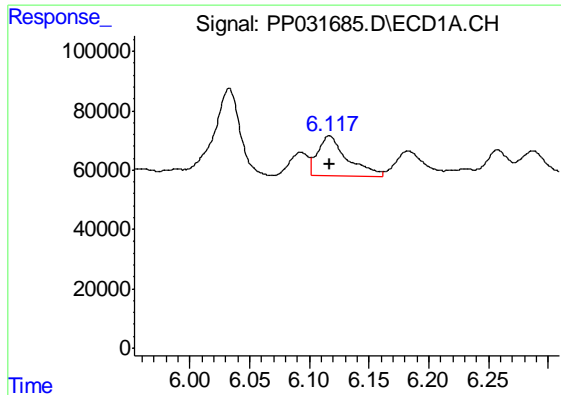
#12 AR-1232-2

R.T.: 5.803 min
 Delta R.T.: 0.002 min
 Response: 101459
 Conc: 187.10 ng/ml



#12 AR-1232-2

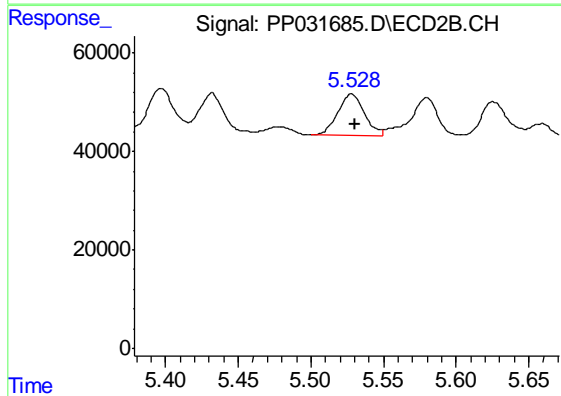
R.T.: 5.337 min
 Delta R.T.: -0.001 min
 Response: 142572
 Conc: 146.40 ng/ml



#13 AR-1232-3

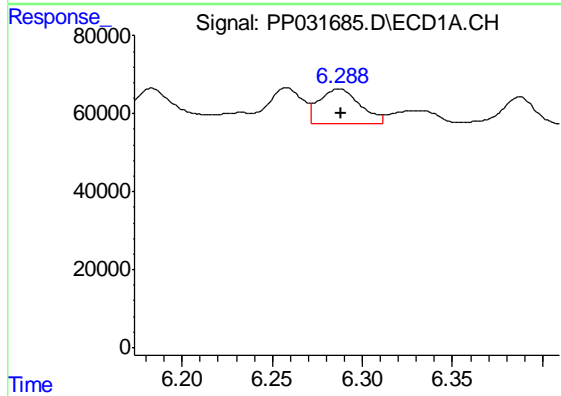
R.T.: 6.117 min
 Delta R.T.: 0.000 min
 Response: 229982
 Conc: 227.73 ng/ml

Instrument :
 ECD_P
 ClientSampleId :
 WOOSPK-036-0204



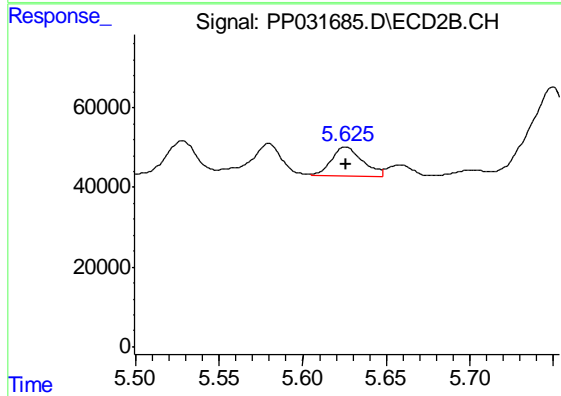
#13 AR-1232-3

R.T.: 5.528 min
 Delta R.T.: -0.002 min
 Response: 107082
 Conc: 203.05 ng/ml



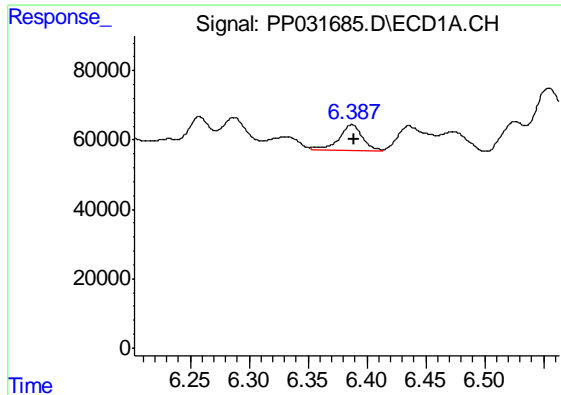
#14 AR-1232-4

R.T.: 6.287 min
 Delta R.T.: -0.001 min
 Response: 141307
 Conc: 266.50 ng/ml



#14 AR-1232-4

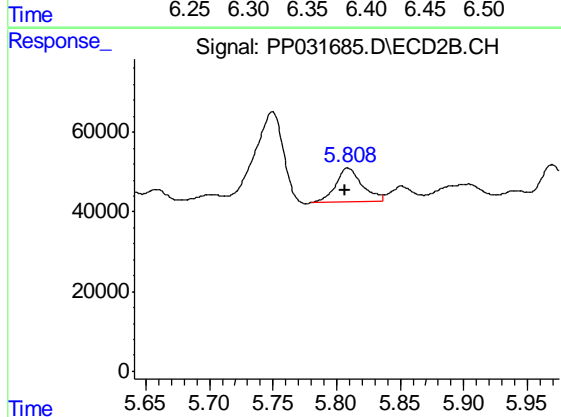
R.T.: 5.626 min
 Delta R.T.: 0.000 min
 Response: 95257
 Conc: 225.55 ng/ml



#15 AR-1232-5

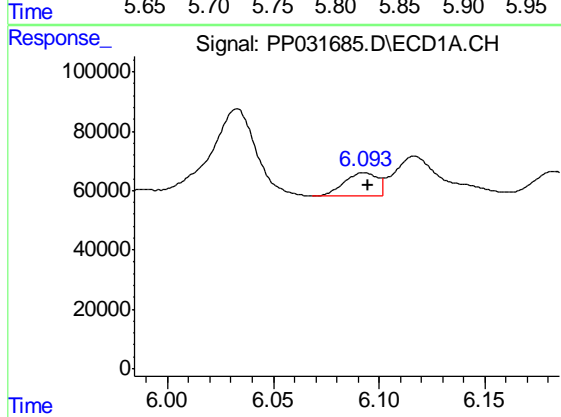
R.T.: 6.387 min
 Delta R.T.: -0.001 min
 Response: 99482
 Conc: 309.69 ng/ml

Instrument :
 ECD_P
 ClientSampleId :
 WOOSPK-036-0204



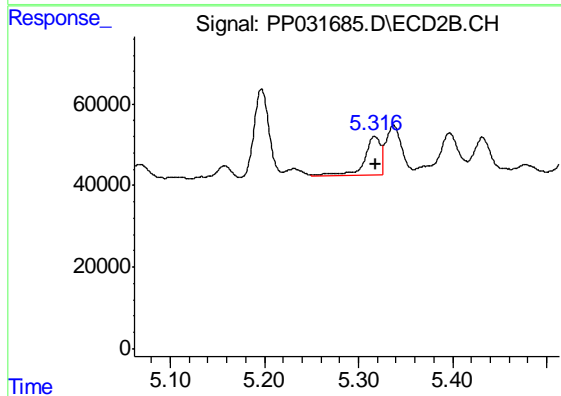
#15 AR-1232-5

R.T.: 5.809 min
 Delta R.T.: 0.002 min
 Response: 124638
 Conc: 430.10 ng/ml



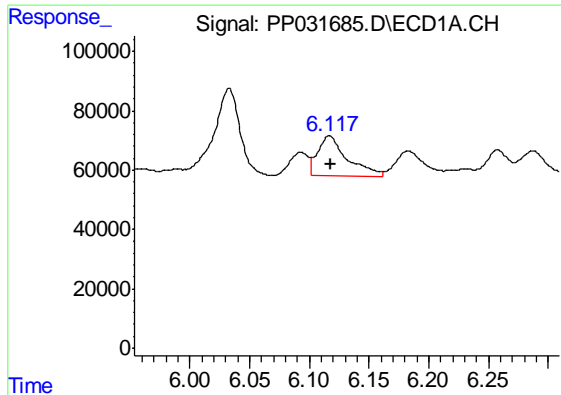
#16 AR-1242-1

R.T.: 6.093 min
 Delta R.T.: -0.002 min
 Response: 86701
 Conc: 72.45 ng/ml



#16 AR-1242-1

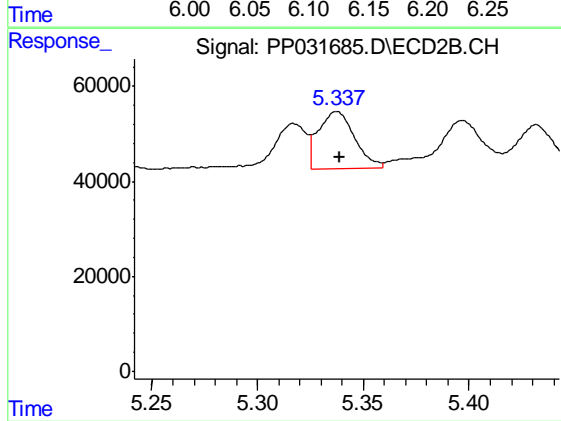
R.T.: 5.317 min
 Delta R.T.: 0.000 min
 Response: 114993
 Conc: 100.73 ng/ml



#17 AR-1242-2

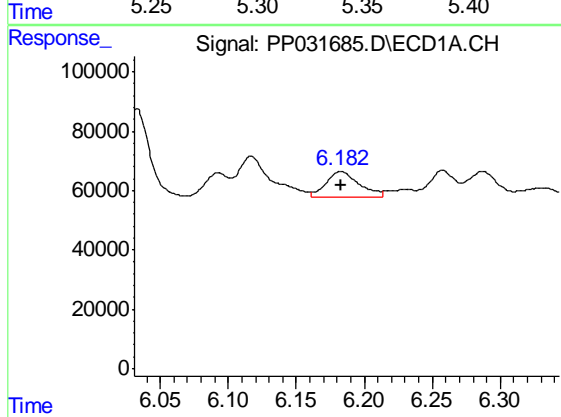
R.T.: 6.117 min
 Delta R.T.: -0.001 min
 Response: 229982
 Conc: 129.26 ng/ml

Instrument :
 ECD_P
 ClientSampleId :
 WOOSPK-036-0204



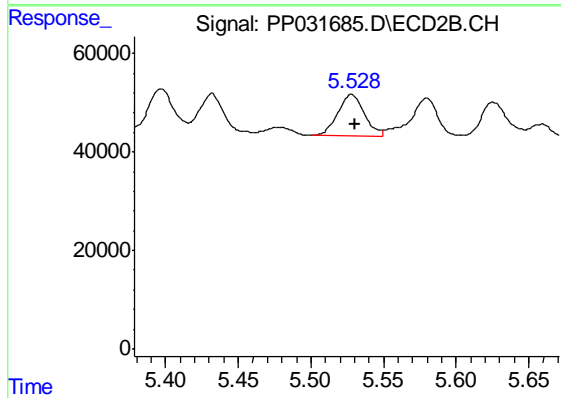
#17 AR-1242-2

R.T.: 5.337 min
 Delta R.T.: -0.002 min
 Response: 142572
 Conc: 84.78 ng/ml



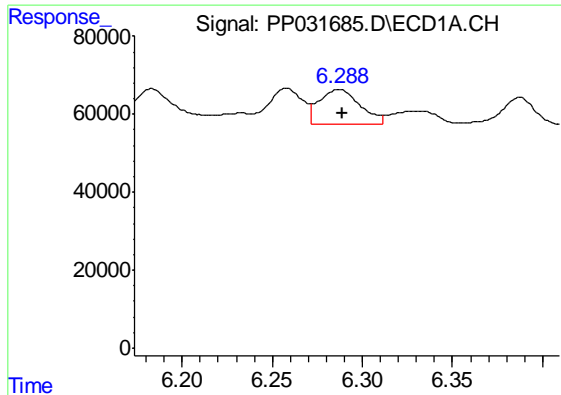
#18 AR-1242-3

R.T.: 6.183 min
 Delta R.T.: 0.000 min
 Response: 146774
 Conc: 131.82 ng/ml



#18 AR-1242-3

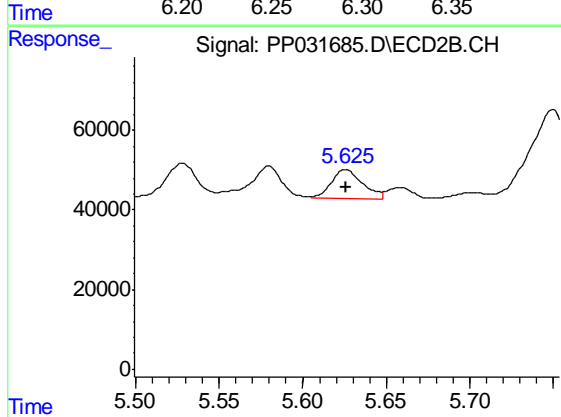
R.T.: 5.528 min
 Delta R.T.: -0.002 min
 Response: 107082
 Conc: 117.27 ng/ml



#19 AR-1242-4

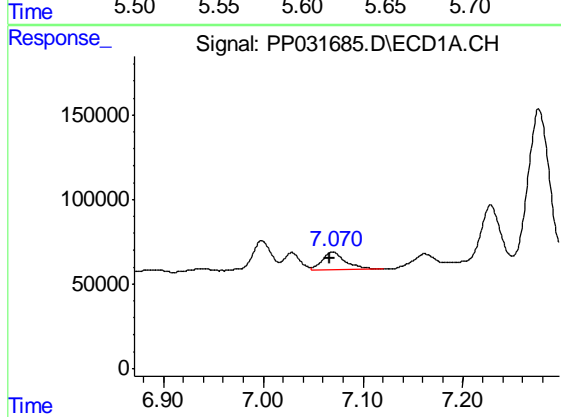
R.T.: 6.287 min
 Delta R.T.: -0.002 min
 Response: 141307
 Conc: 152.90 ng/ml

Instrument :
 ECD_P
ClientSampleId :
 WOOSPK-036-0204



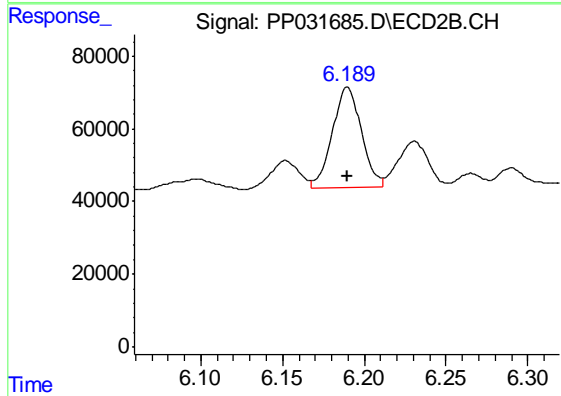
#19 AR-1242-4

R.T.: 5.626 min
 Delta R.T.: 0.000 min
 Response: 95257
 Conc: 113.40 ng/ml



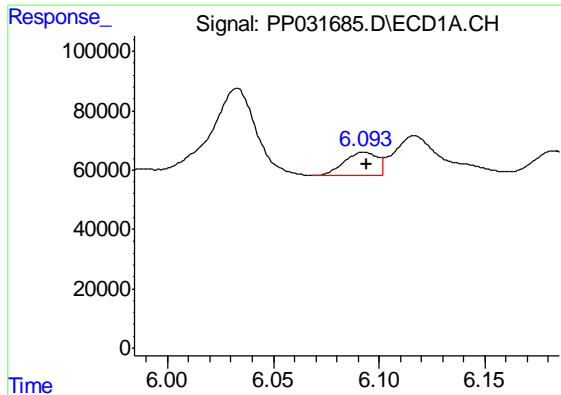
#20 AR-1242-5

R.T.: 7.070 min
 Delta R.T.: 0.003 min
 Response: 170290
 Conc: 185.88 ng/ml



#20 AR-1242-5

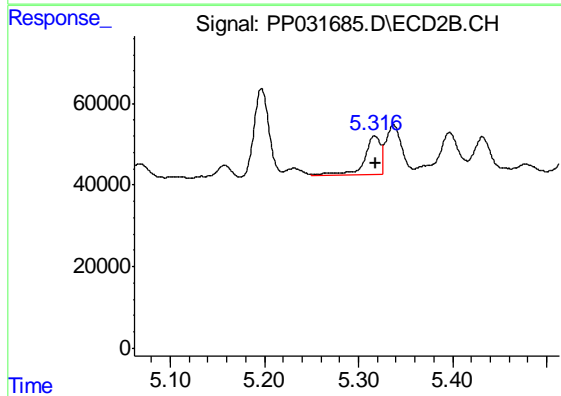
R.T.: 6.190 min
 Delta R.T.: 0.000 min
 Response: 340818
 Conc: 330.34 ng/ml



#21 AR-1248-1

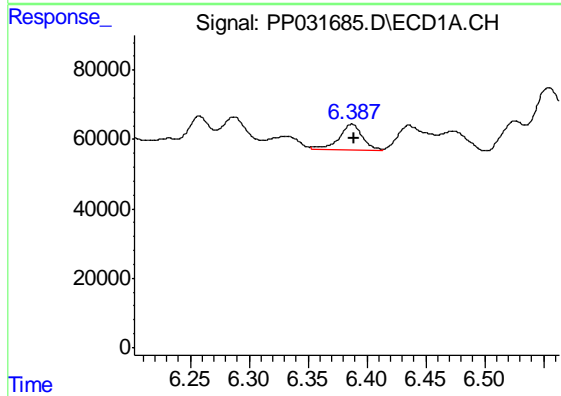
R.T.: 6.093 min
 Delta R.T.: -0.001 min
 Response: 86701
 Conc: 93.89 ng/ml

Instrument :
 ECD_P
 ClientSampleId :
 WOOSPK-036-0204



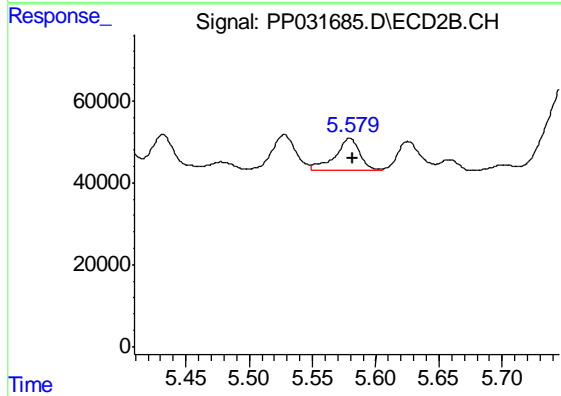
#21 AR-1248-1

R.T.: 5.317 min
 Delta R.T.: -0.001 min
 Response: 114993
 Conc: 133.51 ng/ml



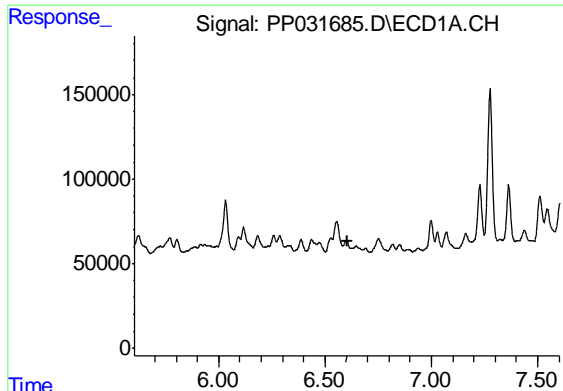
#22 AR-1248-2

R.T.: 6.387 min
 Delta R.T.: -0.002 min
 Response: 99482
 Conc: 84.10 ng/ml



#22 AR-1248-2

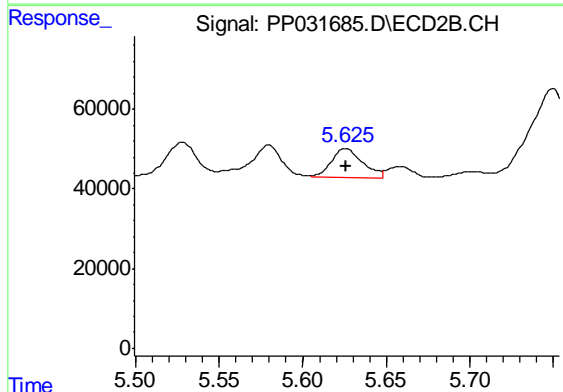
R.T.: 5.580 min
 Delta R.T.: -0.002 min
 Response: 107746
 Conc: 90.24 ng/ml



#23 AR-1248-3

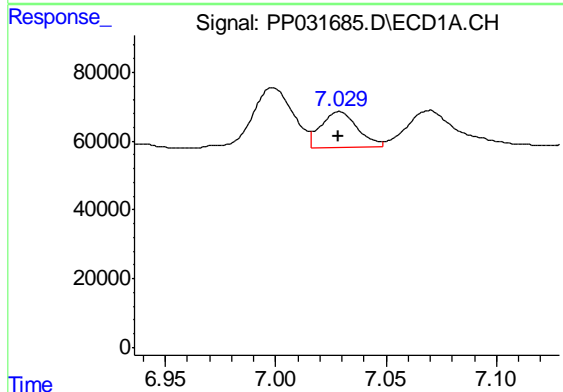
R.T.: 6.601 min
 Delta R.T.: -0.002 min
 Response: -2522
 Conc: N.D.

Instrument :
 ECD_P
 ClientSampleId :
 WOOSPK-036-0204



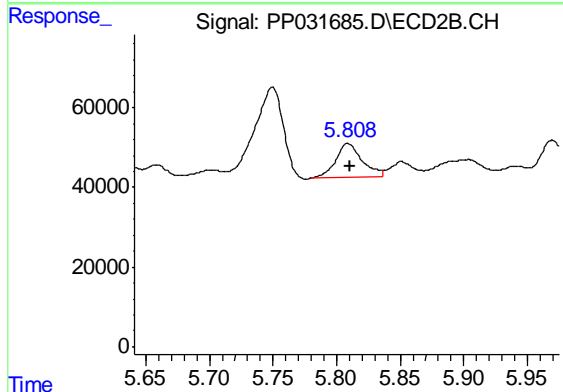
#23 AR-1248-3

R.T.: 5.626 min
 Delta R.T.: 0.000 min
 Response: 95257
 Conc: 75.26 ng/ml



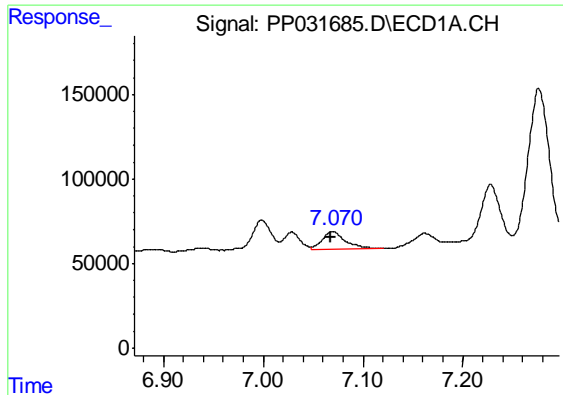
#24 AR-1248-4

R.T.: 7.029 min
 Delta R.T.: 0.000 min
 Response: 118781
 Conc: 75.74 ng/ml



#24 AR-1248-4

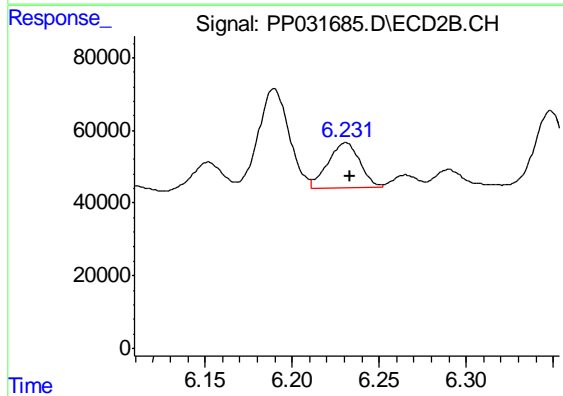
R.T.: 5.809 min
 Delta R.T.: -0.002 min
 Response: 124638
 Conc: 81.35 ng/ml



#25 AR-1248-5

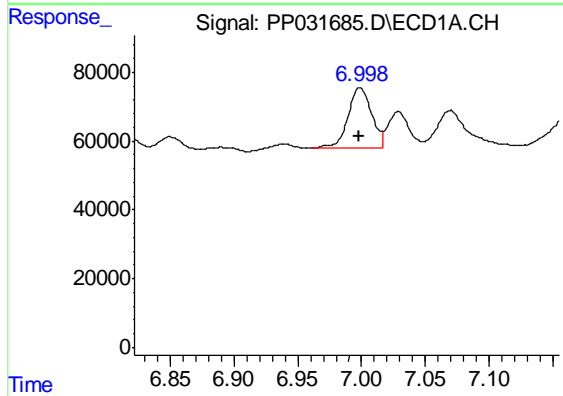
R.T.: 7.070 min
 Delta R.T.: 0.002 min
 Response: 170290
 Conc: 107.27 ng/ml

Instrument :
 ECD_P
 ClientSampleId :
 WOOSPK-036-0204



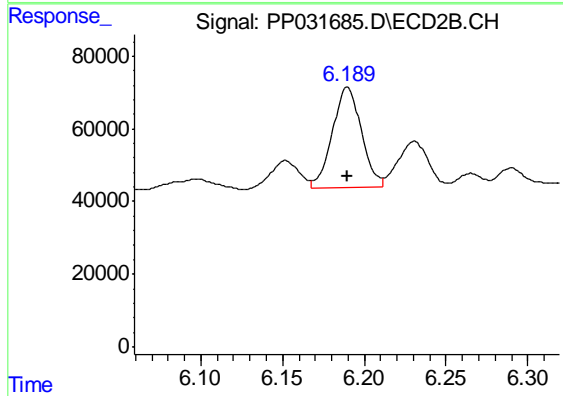
#25 AR-1248-5

R.T.: 6.231 min
 Delta R.T.: -0.003 min
 Response: 158137
 Conc: 108.39 ng/ml



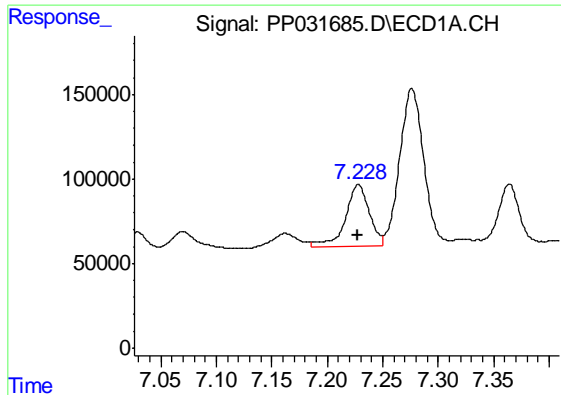
#26 AR-1254-1

R.T.: 6.999 min
 Delta R.T.: 0.000 min
 Response: 225988
 Conc: 148.30 ng/ml



#26 AR-1254-1

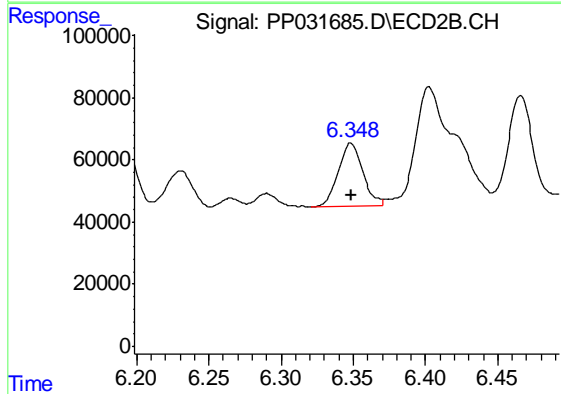
R.T.: 6.190 min
 Delta R.T.: 0.000 min
 Response: 340818
 Conc: 157.55 ng/ml



#27 AR-1254-2

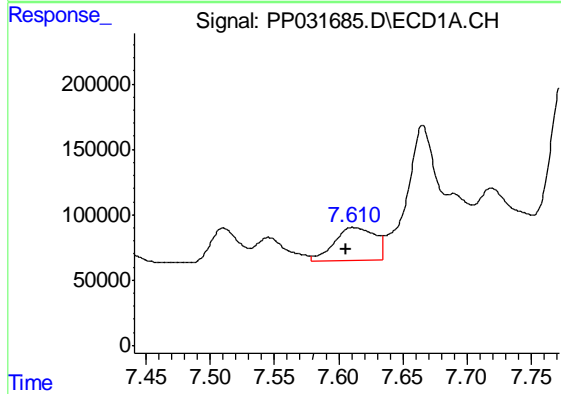
R.T.: 7.228 min
 Delta R.T.: 0.000 min
 Response: 555450
 Conc: 239.17 ng/ml

Instrument :
 ECD_P
 ClientSampleId :
 WOOSPK-036-0204



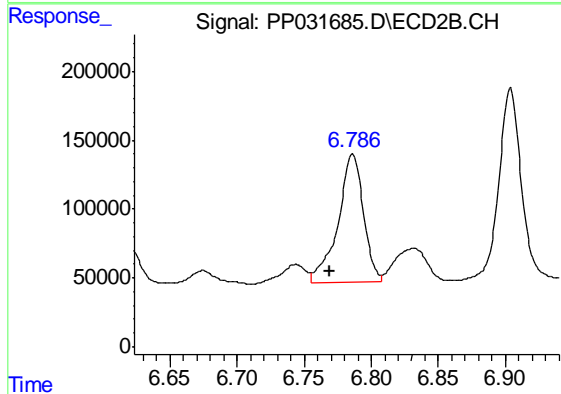
#27 AR-1254-2

R.T.: 6.348 min
 Delta R.T.: 0.000 min
 Response: 240124
 Conc: 128.89 ng/ml



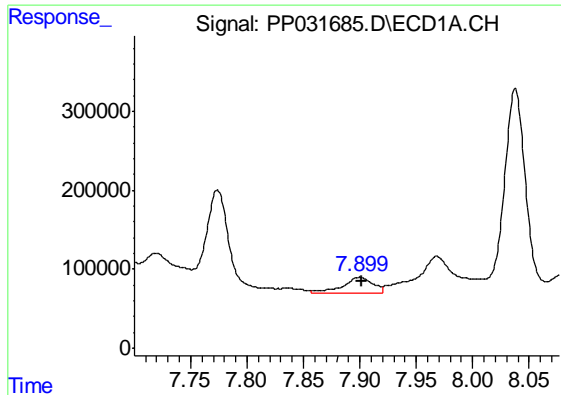
#28 AR-1254-3

R.T.: 7.611 min
 Delta R.T.: 0.005 min
 Response: 554198
 Conc: 219.37 ng/ml



#28 AR-1254-3

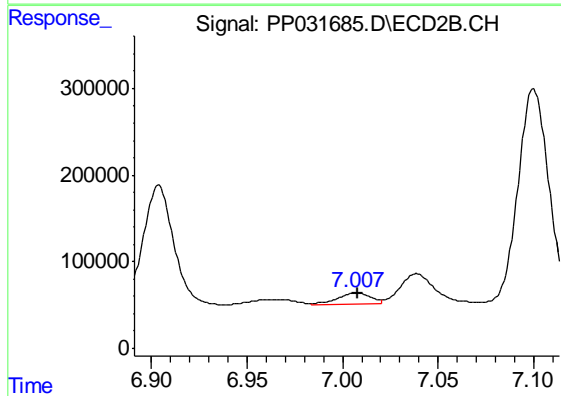
R.T.: 6.786 min
 Delta R.T.: 0.017 min
 Response: 1236607
 Conc: 400.03 ng/ml



#29 AR-1254-4

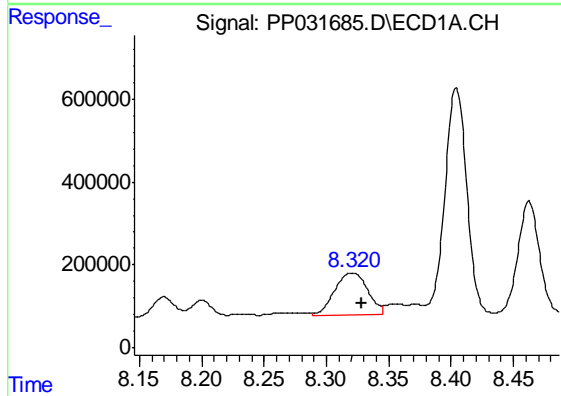
R.T.: 7.900 min
 Delta R.T.: -0.001 min
 Response: 376383
 Conc: 221.82 ng/ml

Instrument :
 ECD_P
 ClientSampleId :
 WOOSPK-036-0204



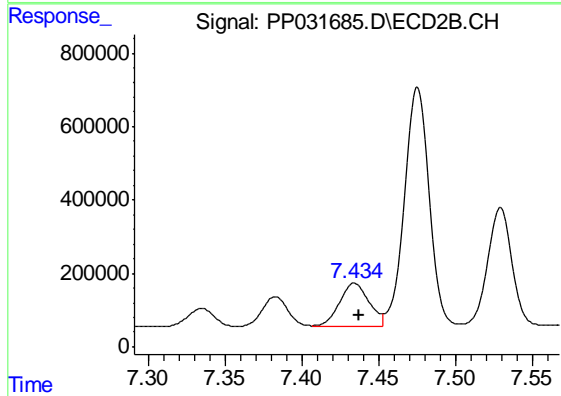
#29 AR-1254-4

R.T.: 7.007 min
 Delta R.T.: 0.000 min
 Response: 155169
 Conc: 91.34 ng/ml



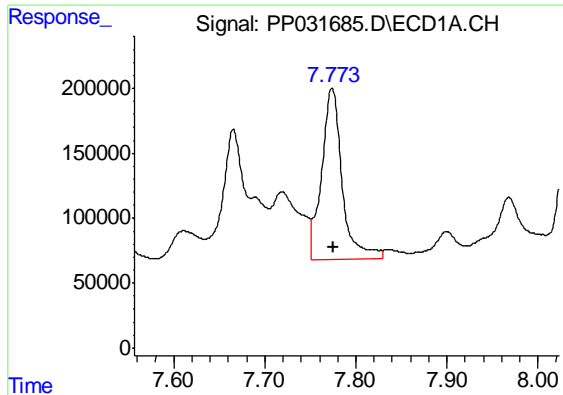
#30 AR-1254-5

R.T.: 8.321 min
 Delta R.T.: -0.007 min
 Response: 1856132
 Conc: 992.90 ng/ml



#30 AR-1254-5

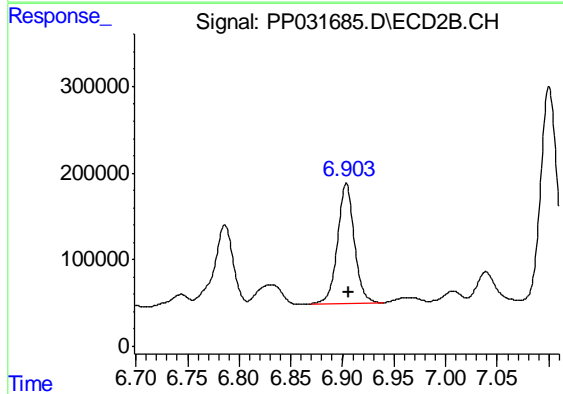
R.T.: 7.434 min
 Delta R.T.: -0.003 min
 Response: 1594673
 Conc: 590.71 ng/ml



#31 AR-1260-1

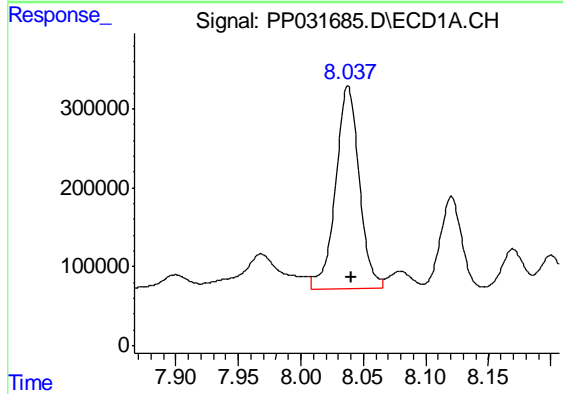
R.T.: 7.774 min
 Delta R.T.: -0.001 min
 Response: 2079383
 Conc: 1188.19 ng/ml

Instrument :
 ECD_P
 ClientSampleId :
 WOOSPK-036-0204



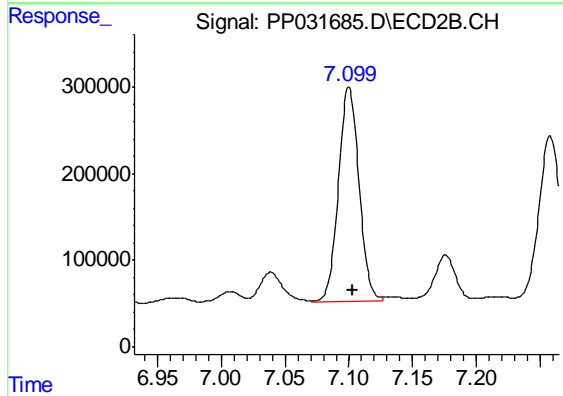
#31 AR-1260-1

R.T.: 6.904 min
 Delta R.T.: -0.003 min
 Response: 1571668
 Conc: 795.34 ng/ml



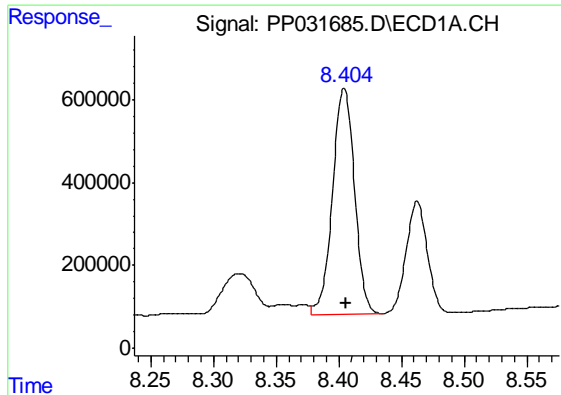
#32 AR-1260-2

R.T.: 8.038 min
 Delta R.T.: -0.002 min
 Response: 3380899
 Conc: 1645.41 ng/ml



#32 AR-1260-2

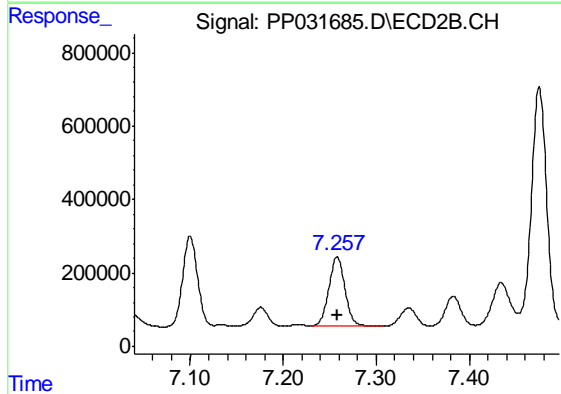
R.T.: 7.100 min
 Delta R.T.: -0.003 min
 Response: 2786663
 Conc: 1144.31 ng/ml



#33 AR-1260-3

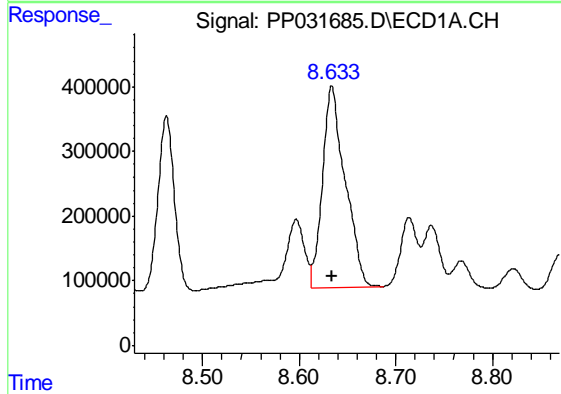
R.T.: 8.404 min
 Delta R.T.: -0.002 min
 Response: 6661314
 Conc: 4084.10 ng/ml

Instrument :
 ECD_P
 ClientSampleId :
 WOOSPK-036-0204



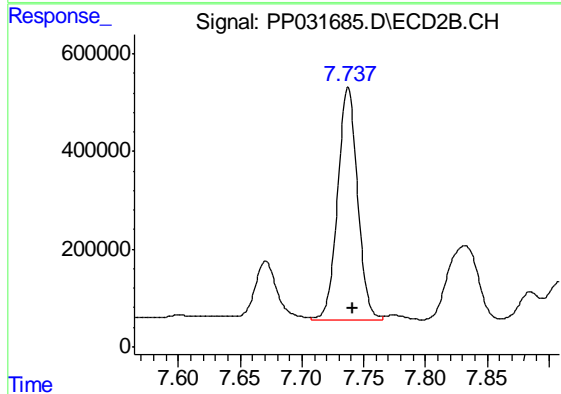
#33 AR-1260-3

R.T.: 7.258 min
 Delta R.T.: 0.000 min
 Response: 2307415
 Conc: 1010.41 ng/ml



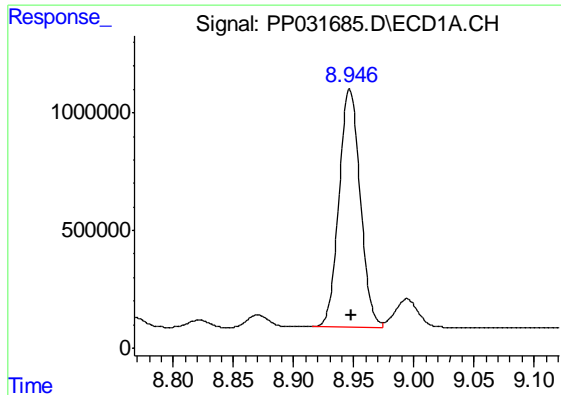
#34 AR-1260-4

R.T.: 8.634 min
 Delta R.T.: 0.000 min
 Response: 5058871
 Conc: 2747.37 ng/ml



#34 AR-1260-4

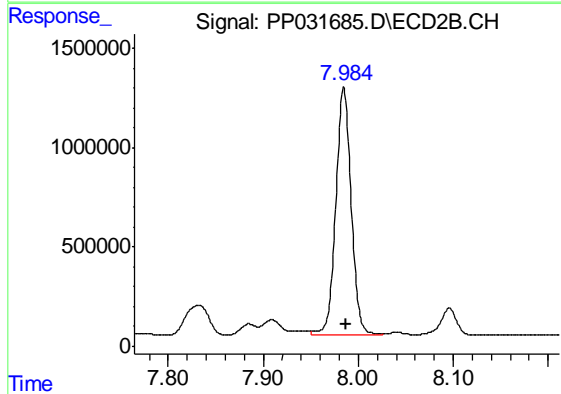
R.T.: 7.737 min
 Delta R.T.: -0.004 min
 Response: 5374655
 Conc: 2828.59 ng/ml



#35 AR-1260-5

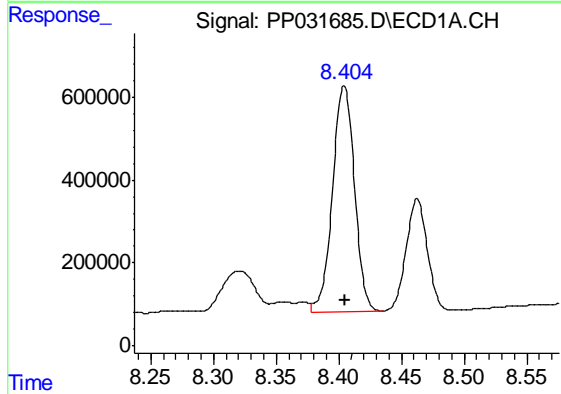
R.T.: 8.947 min
 Delta R.T.: -0.001 min
 Response: 12424244
 Conc: 3369.55 ng/ml

Instrument :
 ECD_P
 ClientSampleId :
 WOOSPK-036-0204



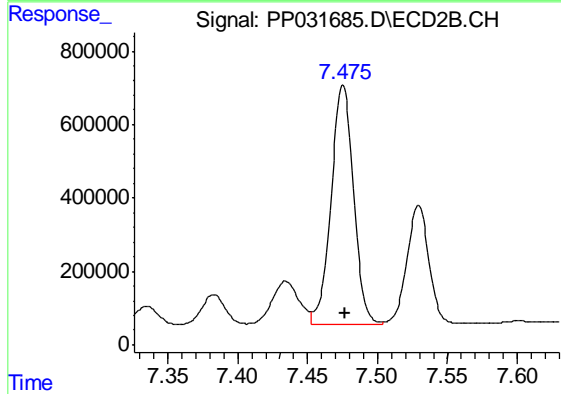
#35 AR-1260-5

R.T.: 7.985 min
 Delta R.T.: -0.003 min
 Response: 14181277
 Conc: 3125.04 ng/ml



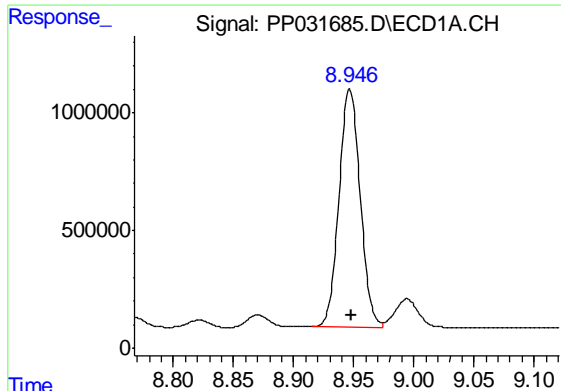
#36 AR-1262-1

R.T.: 8.404 min
 Delta R.T.: 0.000 min
 Response: 6661314
 Conc: 2931.84 ng/ml



#36 AR-1262-1

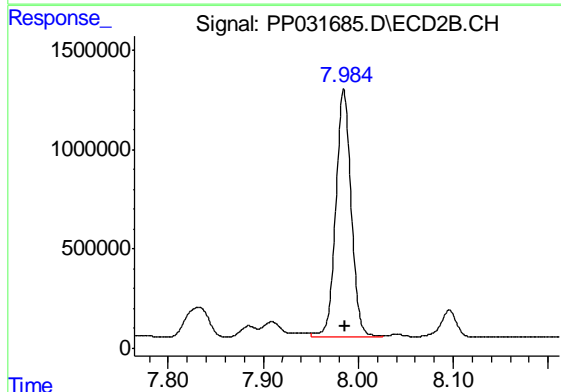
R.T.: 7.475 min
 Delta R.T.: -0.002 min
 Response: 7319969
 Conc: 2633.81 ng/ml



#37 AR-1262-2

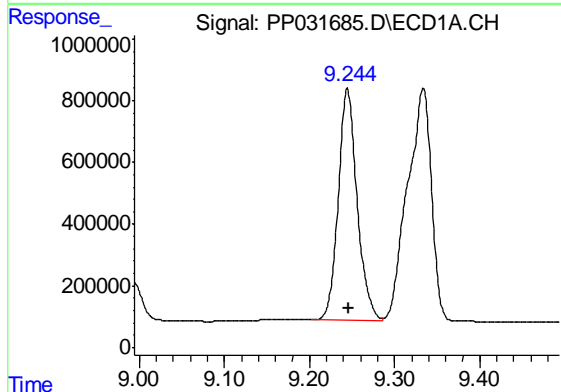
R.T.: 8.947 min
 Delta R.T.: 0.000 min
 Response: 12424244
 Conc: 3126.70 ng/ml

Instrument :
 ECD_P
 ClientSampleId :
 WOOSPK-036-0204



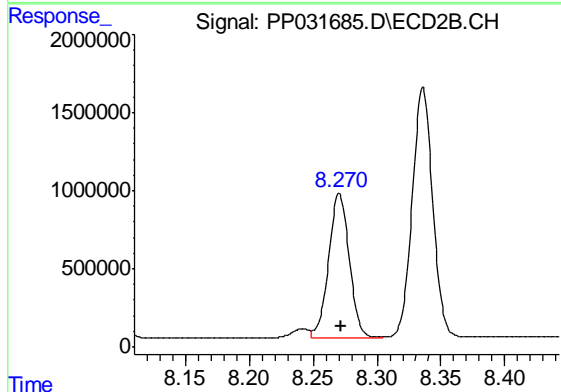
#37 AR-1262-2

R.T.: 7.985 min
 Delta R.T.: -0.002 min
 Response: 14181277
 Conc: 2919.55 ng/ml



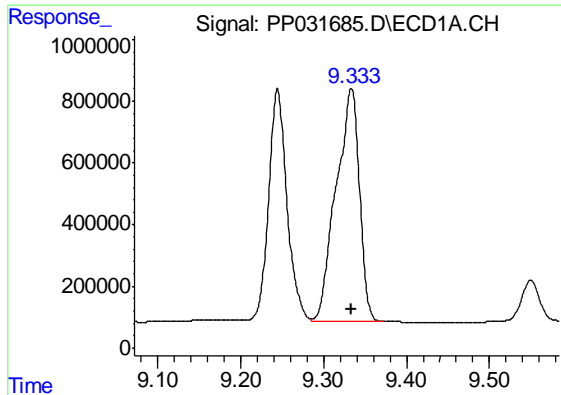
#38 AR-1262-3

R.T.: 9.244 min
 Delta R.T.: -0.002 min
 Response: 11481243
 Conc: 4128.07 ng/ml



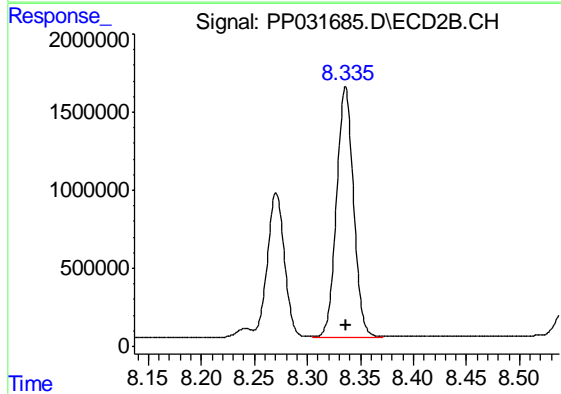
#38 AR-1262-3

R.T.: 8.271 min
 Delta R.T.: -0.002 min
 Response: 10330832
 Conc: 5252.35 ng/ml

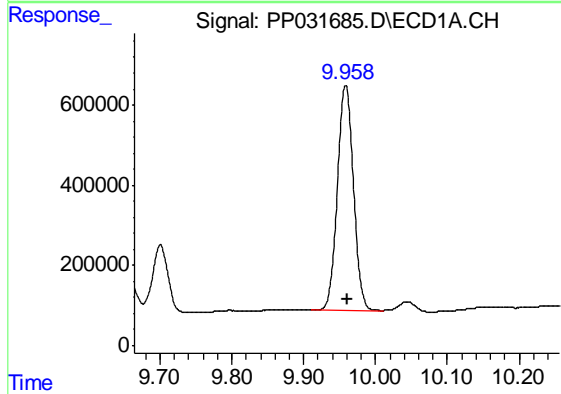


#39 AR-1262-4
 R.T.: 9.334 min
 Delta R.T.: 0.000 min
 Response: 14703016
 Conc: 6707.18 ng/ml

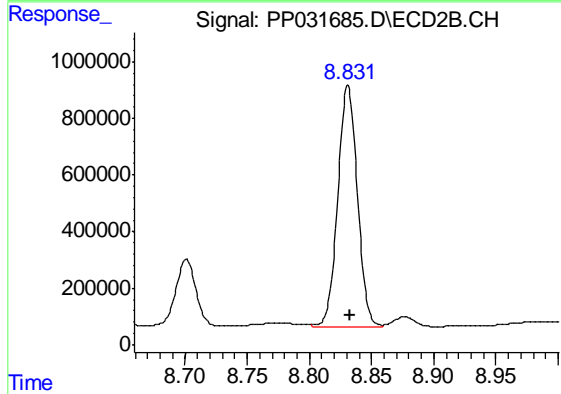
Instrument :
 ECD_P
ClientSampled :
 WOOSPK-036-0204



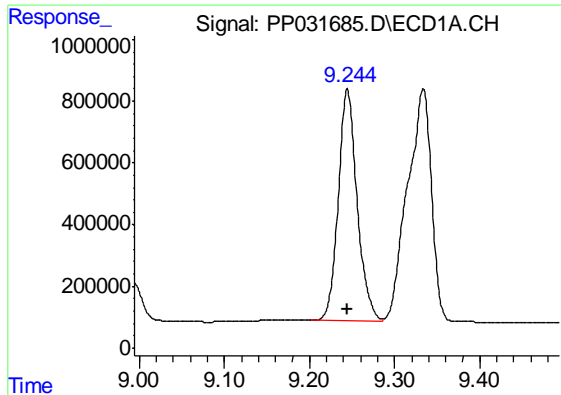
#39 AR-1262-4
 R.T.: 8.336 min
 Delta R.T.: 0.000 min
 Response: 17819247
 Conc: 4915.41 ng/ml



#40 AR-1262-5
 R.T.: 9.958 min
 Delta R.T.: -0.002 min
 Response: 8736757
 Conc: 5983.99 ng/ml

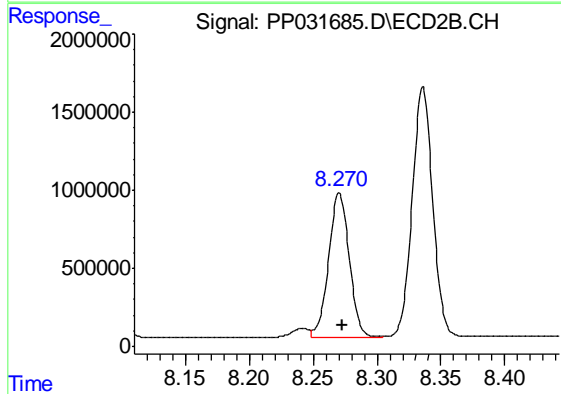


#40 AR-1262-5
 R.T.: 8.831 min
 Delta R.T.: -0.002 min
 Response: 9318474
 Conc: 5740.85 ng/ml

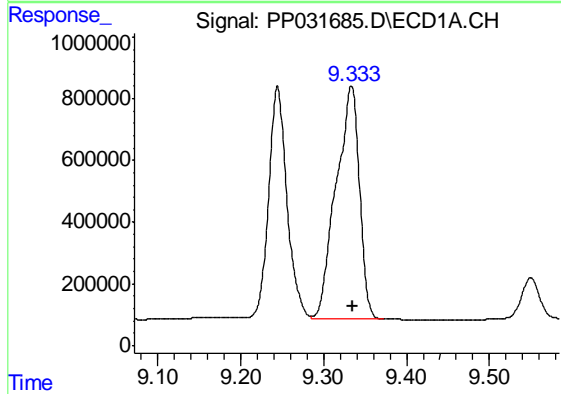


#41 AR-1268-1
 R.T.: 9.244 min
 Delta R.T.: 0.000 min
 Response: 11481243
 Conc: 2389.16 ng/ml

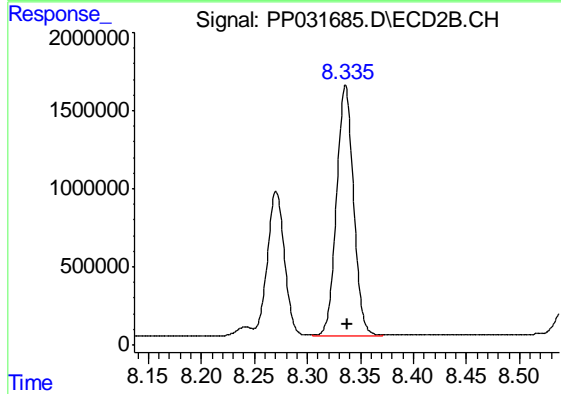
Instrument :
 ECD_P
ClientSampleId :
 WOOSPK-036-0204



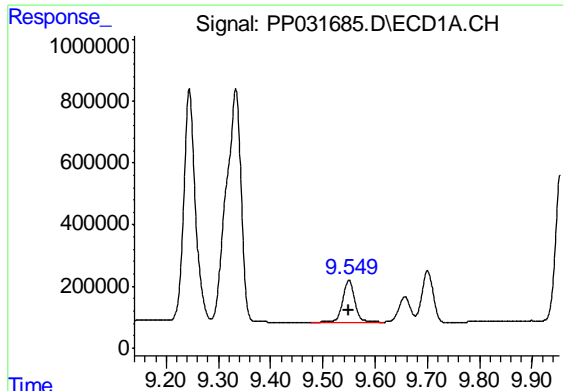
#41 AR-1268-1
 R.T.: 8.271 min
 Delta R.T.: -0.003 min
 Response: 10330832
 Conc: 1867.11 ng/ml



#42 AR-1268-2
 R.T.: 9.334 min
 Delta R.T.: -0.002 min
 Response: 14703016
 Conc: 3158.43 ng/ml



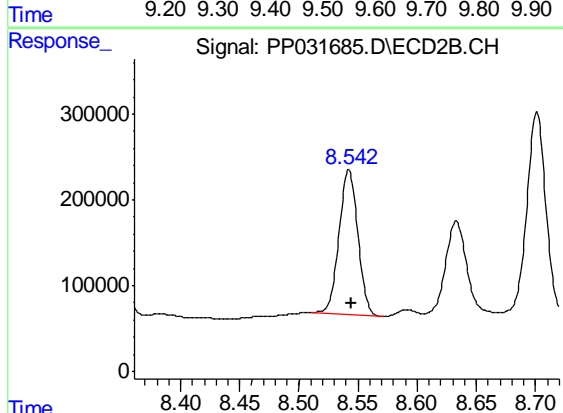
#42 AR-1268-2
 R.T.: 8.336 min
 Delta R.T.: -0.002 min
 Response: 17819247
 Conc: 3295.77 ng/ml



#43 AR-1268-3

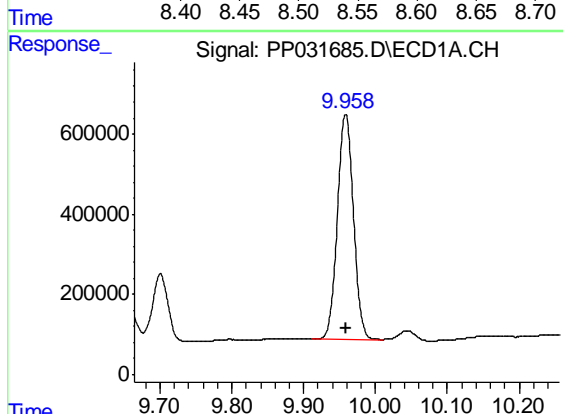
R.T.: 9.550 min
Delta R.T.: 0.000 min
Response: 2269305
Conc: 561.18 ng/ml

Instrument :
ECD_P
ClientSampleId :
WOOSPK-036-0204



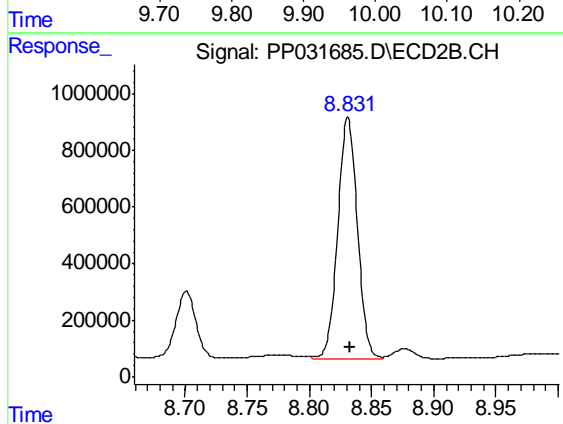
#43 AR-1268-3

R.T.: 8.542 min
Delta R.T.: -0.003 min
Response: 1870365
Conc: 407.78 ng/ml



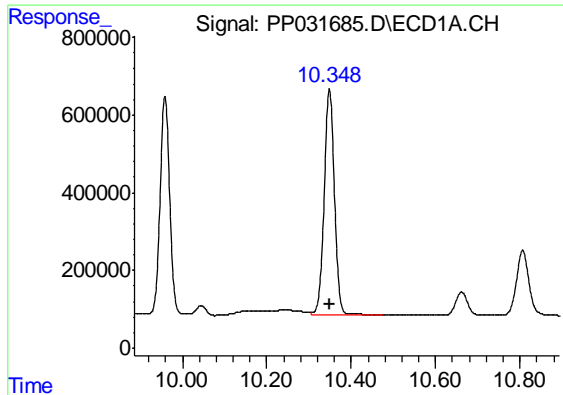
#44 AR-1268-4

R.T.: 9.958 min
Delta R.T.: -0.001 min
Response: 8736757
Conc: 5624.70 ng/ml



#44 AR-1268-4

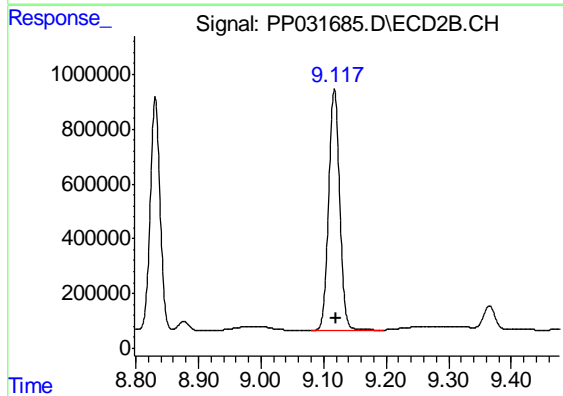
R.T.: 8.831 min
Delta R.T.: -0.002 min
Response: 9318474
Conc: 5112.44 ng/ml



#45 AR-1268-5

R.T.: 10.348 min
Delta R.T.: 0.000 min
Response: 9930992
Conc: 814.12 ng/ml

Instrument :
ECD_P
ClientSampleId :
WOOSPK-036-0204



#45 AR-1268-5

R.T.: 9.117 min
Delta R.T.: -0.002 min
Response: 10732552
Conc: 775.05 ng/ml