

Data Path : Z:\pestpcbsrv\HPCHEM1\ECD\_P\Data\PP112520\  
 Data File : PP031686.D  
 Signal(s) : Signal #1: ECD1A.CH Signal #2: ECD2B.CH  
 Acq On : 25 Nov 2020 15:18  
 Operator : DD\AJ  
 Sample : L4821-14DL 100X  
 Misc :  
 ALS Vial : 14 Sample Multiplier: 1

Instrument :  
 ECD\_P  
 ClientSampleId :  
 FD-03DL

Integration File signal 1: autoint1.e  
 Integration File signal 2: autoint2.e  
 Quant Time: Nov 27 00:38:57 2020  
 Quant Method : Z:\pestpcbsrv\HPCHEM1\ECD\_P\methods\PP112220.M  
 Quant Title : GC EXTRACTABLES  
 QLast Update : Tue Nov 24 12:23:58 2020  
 Response via : Initial Calibration  
 Integrator: ChemStation 6890 Scale Mode: Small noise peaks clipped

Volume Inj. : 2 µl  
 Signal #1 Phase : ZB-MR1 Signal #2 Phase: ZB-MR2  
 Signal #1 Info : 30Mx0.32mmx 0.50µ Signal #2 Info : 30M x 0.32mm x 0.25µm

Compound	RT#1	RT#2	Resp#1	Resp#2	ng/ml	ng/ml
-----						
System Monitoring Compounds						
1) SA Tetrachlo...	0.000	4.062	0	11005	N.D.	0.230 #
2) SA Decachlor...	10.662	9.362	100738	24885	2.966	0.672 #
Target Compounds						
3) L1 AR-1016-1	0.000	5.316	0	47057	N.D.	31.844 #
4) L1 AR-1016-2	0.000	5.332	0	23170	N.D.	10.656 #
5) L1 AR-1016-3	0.000	5.530	0	22157	N.D.	18.958 #
6) L1 AR-1016-4	0.000	5.580	0	12901	N.D.	14.780 #
7) L1 AR-1016-5	0.000	5.808	0	8206	N.D.	7.214 #
8) L2 AR-1221-1	0.000	4.319	0	5739	N.D.	11.312 #
9) L2 AR-1221-2	0.000	4.417	0	3993	N.D.	10.352 #
10) L2 AR-1221-3	0.000	4.506	0	19901	N.D.	16.499 #
11) L3 AR-1232-1	0.000	4.506	0	19901	N.D.	19.155 #
12) L3 AR-1232-2	0.000	5.332	0	23170	N.D.	23.793 #
13) L3 AR-1232-3	0.000	5.530	0	22157	N.D.	42.014 #
14) L3 AR-1232-4	0.000	5.624	0	11332	N.D.	26.833 #
15) L3 AR-1232-5	0.000	5.808	0	8206	N.D.	28.316 #
16) L4 AR-1242-1	0.000	5.316	0	47057	N.D.	41.220 #
17) L4 AR-1242-2	0.000	5.332	0	23170	N.D.	13.778 #
18) L4 AR-1242-3	0.000	5.530	0	22157	N.D.	24.265 #
19) L4 AR-1242-4	0.000	5.624	0	11332	N.D.	13.490 #
20) L4 AR-1242-5	0.000	6.188	0	37461	N.D.	36.309 #
21) L5 AR-1248-1	0.000	5.316	0	47057	N.D.	54.634 #
22) L5 AR-1248-2	0.000	5.580	0	12901	N.D.	10.805 #
23) L5 AR-1248-3	0.000	5.624	0	11332	N.D.	8.953 #
24) L5 AR-1248-4	0.000	5.808	0	8206	N.D.	5.356 #
25) L5 AR-1248-5	0.000	6.232	0	17211	N.D.	11.797 #
26) L6 AR-1254-1	0.000	6.188	0	37461	N.D.	17.317 #
27) L6 AR-1254-2	7.226	6.347	229962	44735	99.017	24.012 #
28) L6 AR-1254-3	0.000	6.786f	0	211901	N.D.	68.549 #
29) L6 AR-1254-4	0.000	7.004	0	29353	N.D.	17.277 #
30) L6 AR-1254-5	8.319	7.434	384765	324668	205.821	120.266 #
31) L7 AR-1260-1	7.773	6.904	449533	370463	256.870	187.473 #
32) L7 AR-1260-2	8.038	7.100	637656	565852	310.334	232.359 #
33) L7 AR-1260-3	8.403	7.258	1324158	507586	811.851	222.271 #
34) L7 AR-1260-4	8.633	7.737	980432	1207211	532.454	635.335
35) L7 AR-1260-5	8.947	7.984	2503667	3355305	679.013	739.388
36) L8 AR-1262-1	8.403	7.475	1324158	1522776	582.801	547.914
37) L8 AR-1262-2	8.947	7.984	2503667	3355305	630.076	690.769
38) L8 AR-1262-3	9.244	8.271	2053086	1799878	738.184	915.085
39) L8 AR-1262-4	9.333	8.336	2807457	3362943	1280.698	927.661 #
40) L8 AR-1262-5	9.959	8.831	1716073	1658295	1175.376	1021.628
41) L9 AR-1268-1	9.244	8.271	2053086	1799878	427.231	325.295
42) L9 AR-1268-2	9.333	8.336	2807457	3362943	603.085	621.996

Data Path : Z:\pestpcbsrv\HPCHEM1\ECD\_P\Data\PP112520\  
 Data File : PP031686.D  
 Signal(s) : Signal #1: ECD1A.CH Signal #2: ECD2B.CH  
 Acq On : 25 Nov 2020 15:18  
 Operator : DD\AJ  
 Sample : L4821-14DL 100X  
 Misc :  
 ALS Vial : 14 Sample Multiplier: 1

Instrument :  
 ECD\_P  
 ClientSampleId :  
 FD-03DL

Integration File signal 1: autoint1.e  
 Integration File signal 2: autoint2.e  
 Quant Time: Nov 27 00:38:57 2020  
 Quant Method : Z:\pestpcbsrv\HPCHEM1\ECD\_P\methods\PP112220.M  
 Quant Title : GC EXTRACTABLES  
 QLast Update : Tue Nov 24 12:23:58 2020  
 Response via : Initial Calibration  
 Integrator: ChemStation 6890 Scale Mode: Small noise peaks clipped

Volume Inj. : 2 µl  
 Signal #1 Phase : ZB-MR1 Signal #2 Phase: ZB-MR2  
 Signal #1 Info : 30Mx0.32mmx 0.50µ Signal #2 Info : 30M x 0.32mm x 0.25µm

	Compound	RT#1	RT#2	Resp#1	Resp#2	ng/ml	ng/ml
43)	L9 AR-1268-3	9.549	8.542	455103	233323	112.544	50.870 #
44)	L9 AR-1268-4	9.959	8.831	1716073	1658295	1104.802	909.798
45)	L9 AR-1268-5	10.346	9.117	1878540	1748636	153.998	126.277

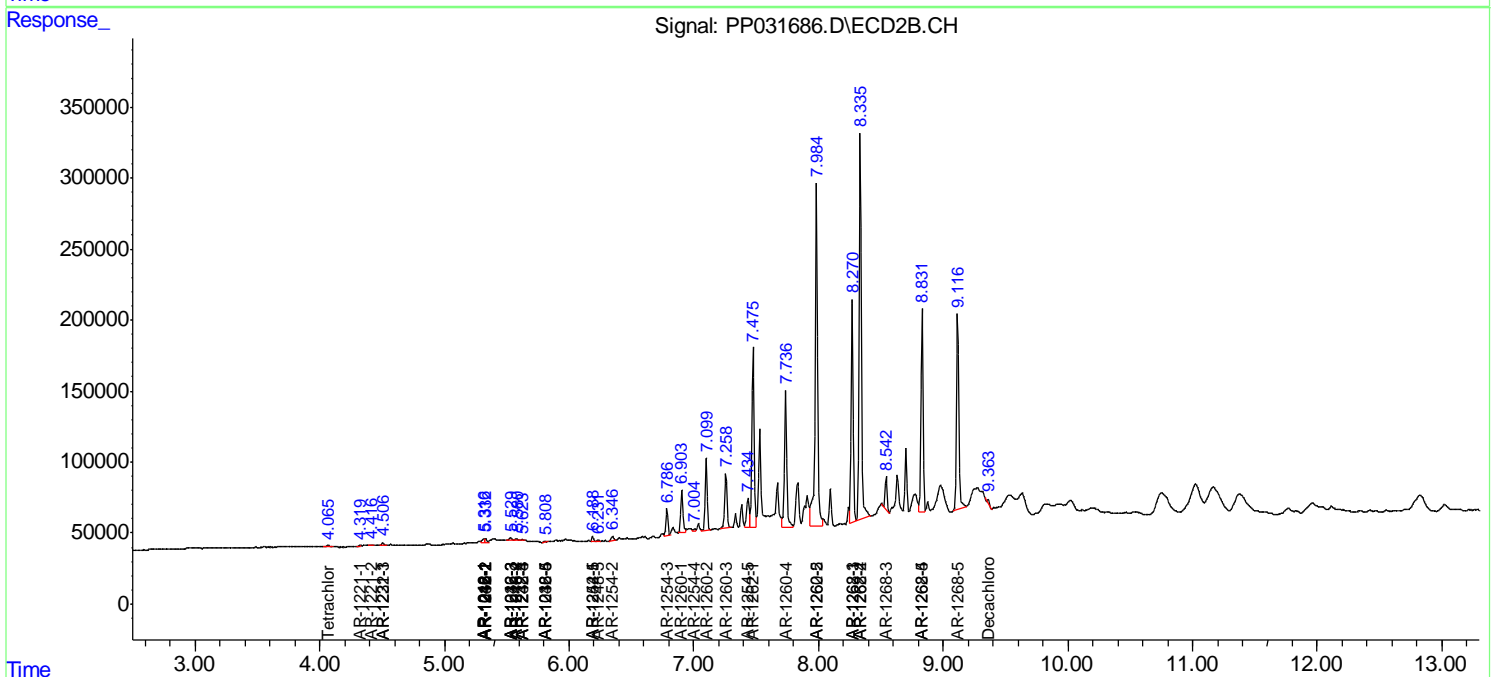
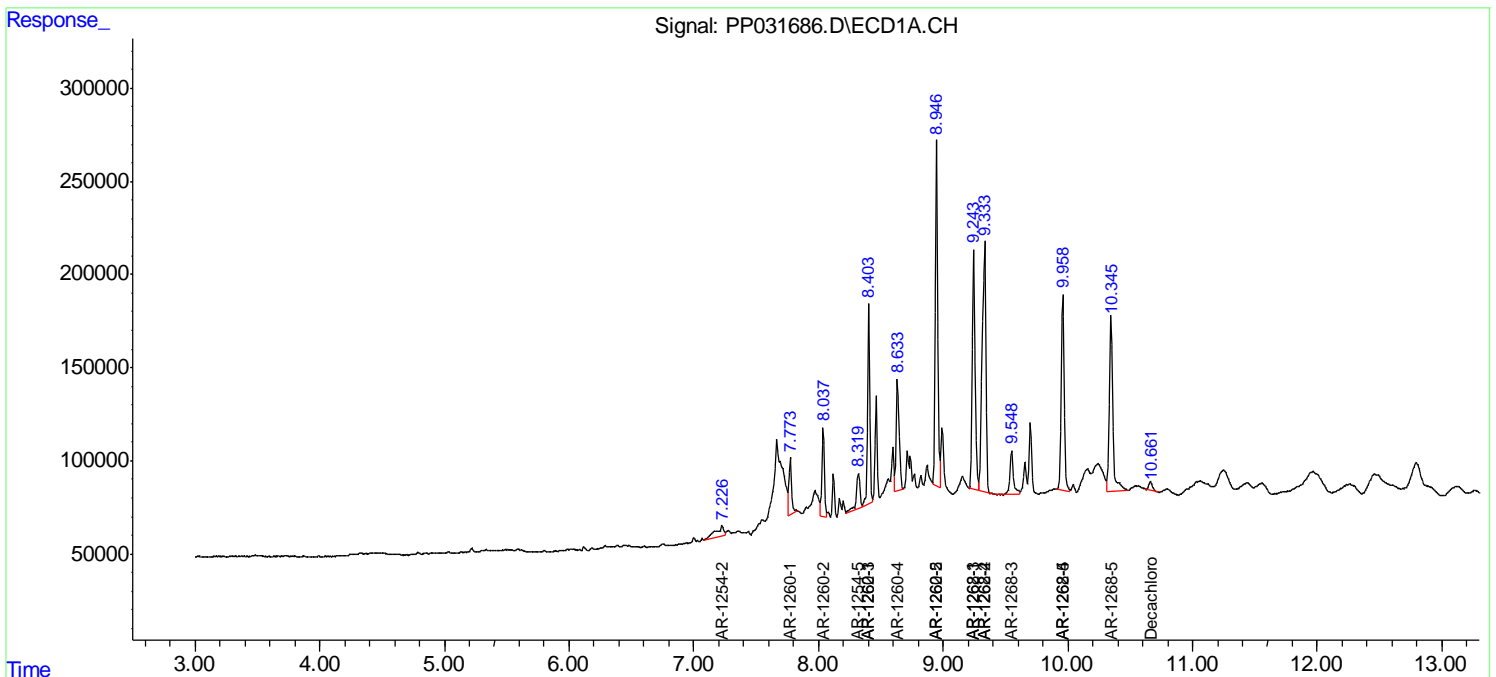
(f)=RT Delta > 1/2 Window (#)=Amounts differ by > 25% (m)=manual int.

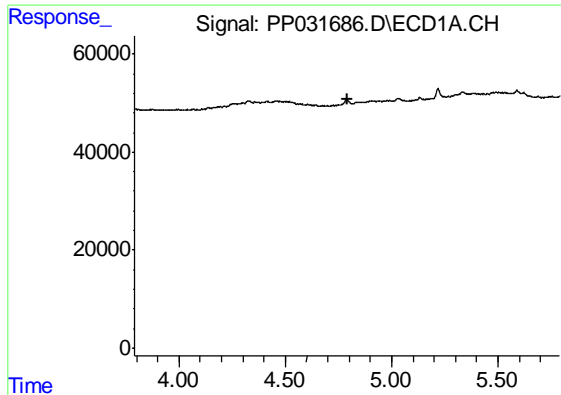
Data Path : Z:\pestpcbsrv\HPCHEM1\ECD\_P\Data\PP112520\  
 Data File : PP031686.D  
 Signal(s) : Signal #1: ECD1A.CH Signal #2: ECD2B.CH  
 Acq On : 25 Nov 2020 15:18  
 Operator : DD\AJ  
 Sample : L4821-14DL 100X  
 Misc :  
 ALS Vial : 14 Sample Multiplier: 1

Instrument :  
 ECD\_P  
 ClientSampled :  
 FD-03DL

Integration File signal 1: autoint1.e  
 Integration File signal 2: autoint2.e  
 Quant Time: Nov 27 00:38:57 2020  
 Quant Method : Z:\pestpcbsrv\HPCHEM1\ECD\_P\methods\PP112220.M  
 Quant Title : GC EXTRACTABLES  
 QLast Update : Tue Nov 24 12:23:58 2020  
 Response via : Initial Calibration  
 Integrator: ChemStation 6890 Scale Mode: Small noise peaks clipped

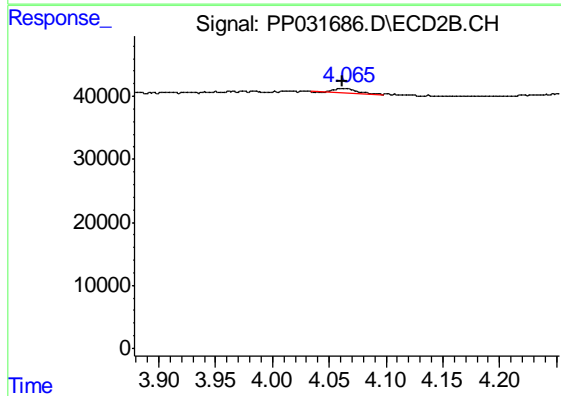
Volume Inj. : 2 µl  
 Signal #1 Phase : ZB-MR1 Signal #2 Phase: ZB-MR2  
 Signal #1 Info : 30Mx0.32mmx 0.50µ Signal #2 Info : 30M x 0.32mm x 0.25µm



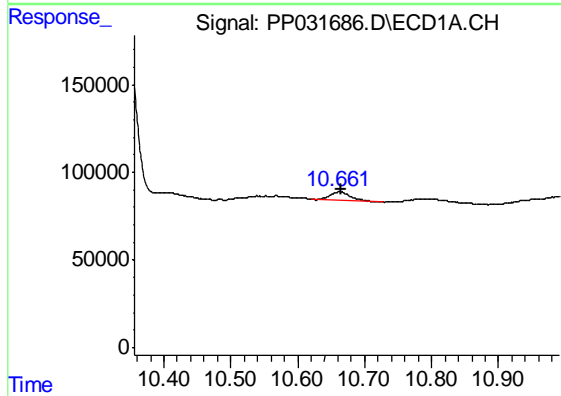


#1 Tetrachloro-m-xylene  
 R.T.: 0.000 min  
 Exp R.T. : 4.790 min  
 Response: 0  
 Conc: N.D.

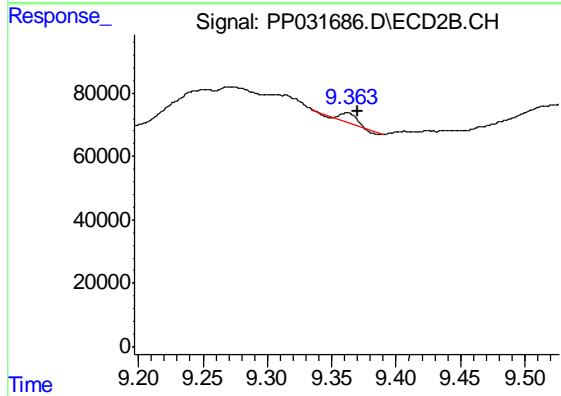
Instrument :  
 ECD\_P  
 ClientSampleId :  
 FD-03DL



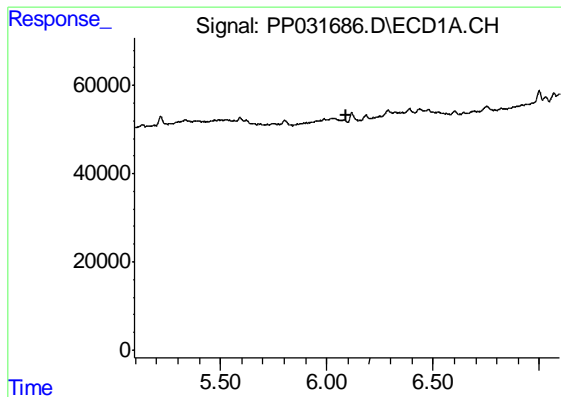
#1 Tetrachloro-m-xylene  
 R.T.: 4.062 min  
 Delta R.T.: 0.000 min  
 Response: 11005  
 Conc: 0.23 ng/ml



#2 Decachlorobiphenyl  
 R.T.: 10.662 min  
 Delta R.T.: -0.003 min  
 Response: 100738  
 Conc: 2.97 ng/ml



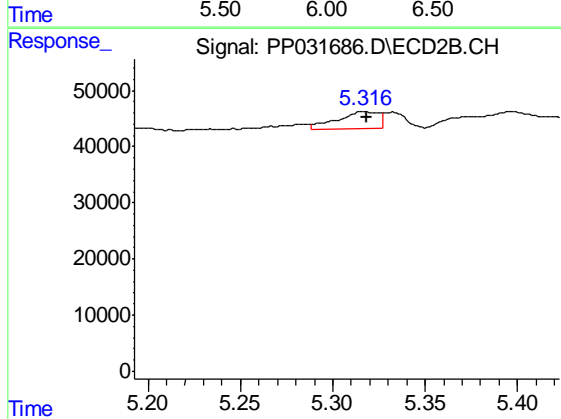
#2 Decachlorobiphenyl  
 R.T.: 9.362 min  
 Delta R.T.: -0.008 min  
 Response: 24885  
 Conc: 0.67 ng/ml



#3 AR-1016-1

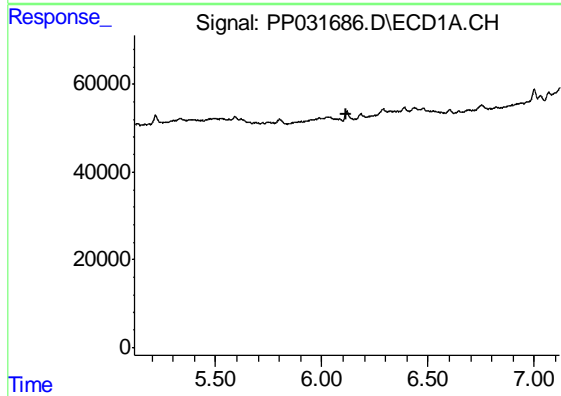
R.T.: 0.000 min  
 Exp R.T. : 6.095 min  
 Response: 0  
 Conc: N.D.

Instrument :  
 ECD\_P  
 ClientSampleId :  
 FD-03DL



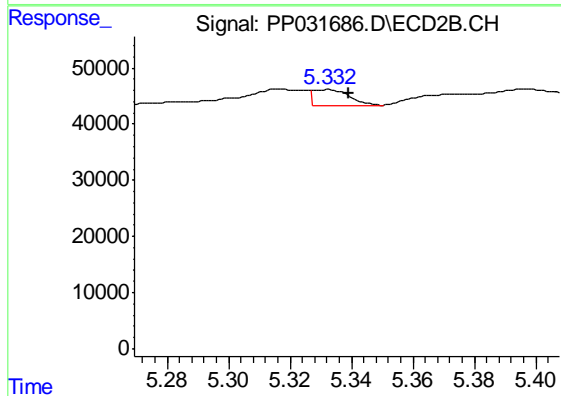
#3 AR-1016-1

R.T.: 5.316 min  
 Delta R.T.: -0.002 min  
 Response: 47057  
 Conc: 31.84 ng/ml



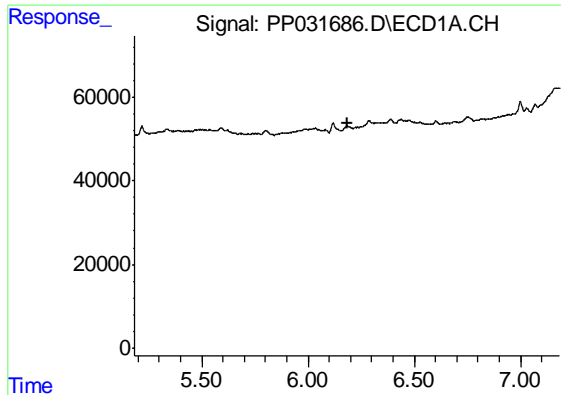
#4 AR-1016-2

R.T.: 0.000 min  
 Exp R.T. : 6.118 min  
 Response: 0  
 Conc: N.D.



#4 AR-1016-2

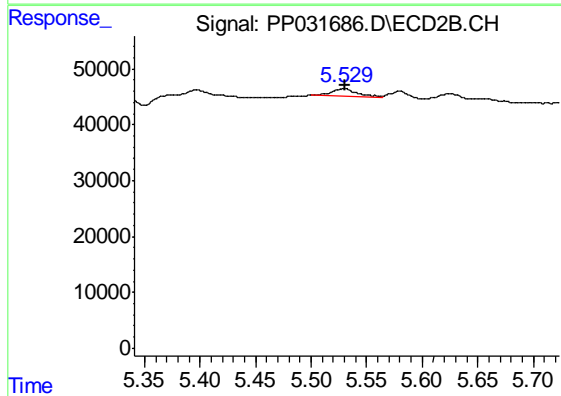
R.T.: 5.332 min  
 Delta R.T.: -0.007 min  
 Response: 23170  
 Conc: 10.66 ng/ml



#5 AR-1016-3

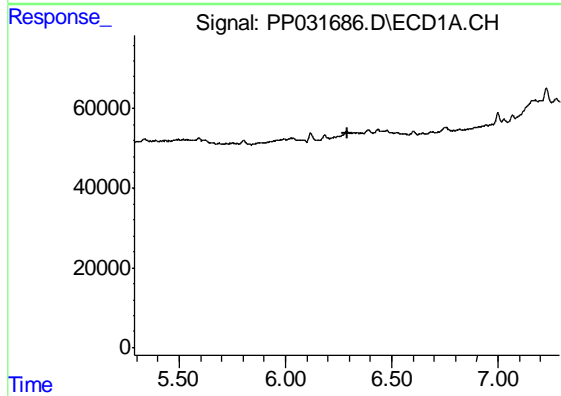
R.T.: 0.000 min  
 Exp R.T. : 6.183 min  
 Response: 0  
 Conc: N.D.

Instrument :  
 ECD\_P  
 ClientSampled :  
 FD-03DL



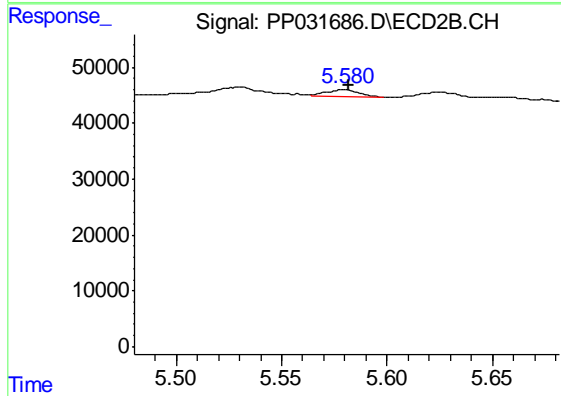
#5 AR-1016-3

R.T.: 5.530 min  
 Delta R.T.: 0.000 min  
 Response: 22157  
 Conc: 18.96 ng/ml



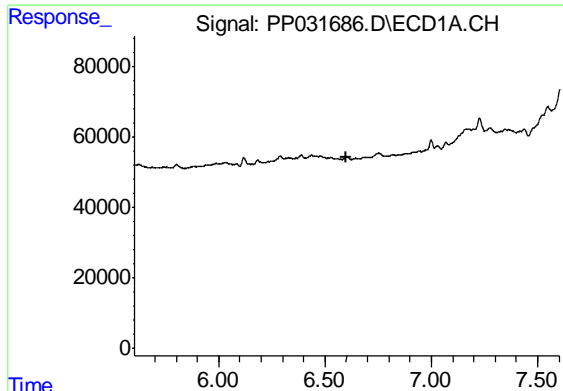
#6 AR-1016-4

R.T.: 0.000 min  
 Exp R.T. : 6.289 min  
 Response: 0  
 Conc: N.D.



#6 AR-1016-4

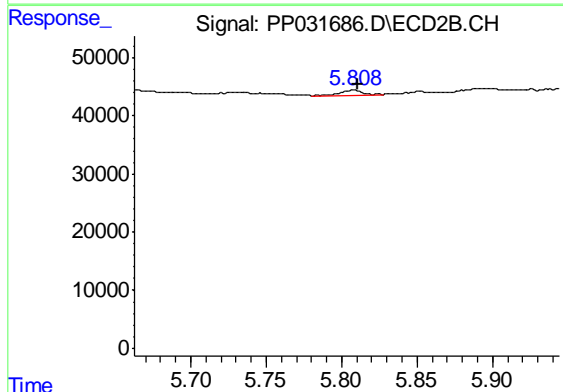
R.T.: 5.580 min  
 Delta R.T.: -0.002 min  
 Response: 12901  
 Conc: 14.78 ng/ml



#7 AR-1016-5

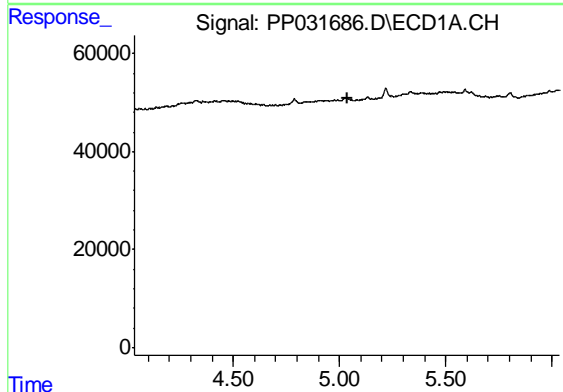
R.T.: 0.000 min  
 Exp R.T. : 6.603 min  
 Response: 0  
 Conc: N.D.

Instrument :  
 ECD\_P  
 ClientSampled :  
 FD-03DL



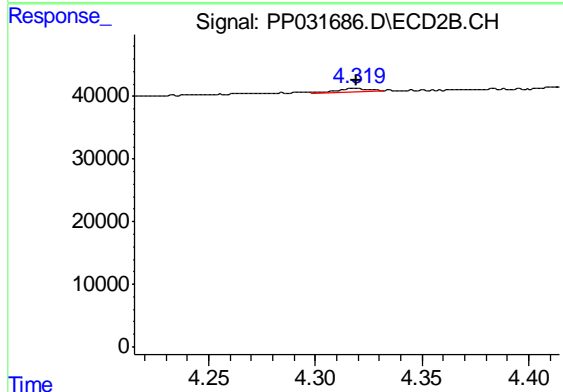
#7 AR-1016-5

R.T.: 5.808 min  
 Delta R.T.: -0.003 min  
 Response: 8206  
 Conc: 7.21 ng/ml



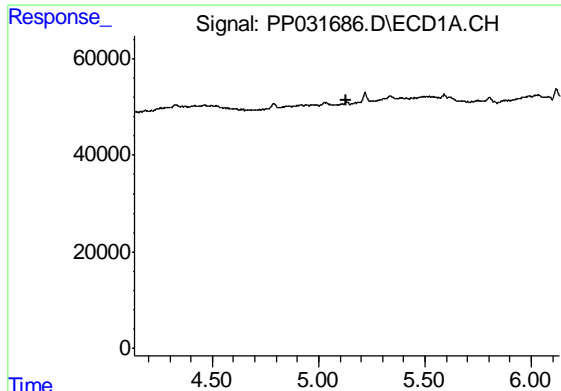
#8 AR-1221-1

R.T.: 0.000 min  
 Exp R.T. : 5.035 min  
 Response: 0  
 Conc: N.D.



#8 AR-1221-1

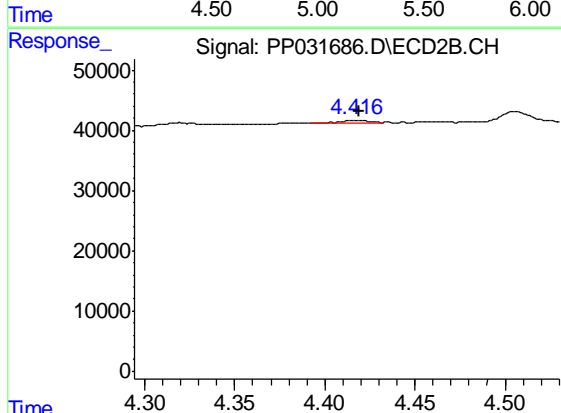
R.T.: 4.319 min  
 Delta R.T.: 0.000 min  
 Response: 5739  
 Conc: 11.31 ng/ml



#9 AR-1221-2

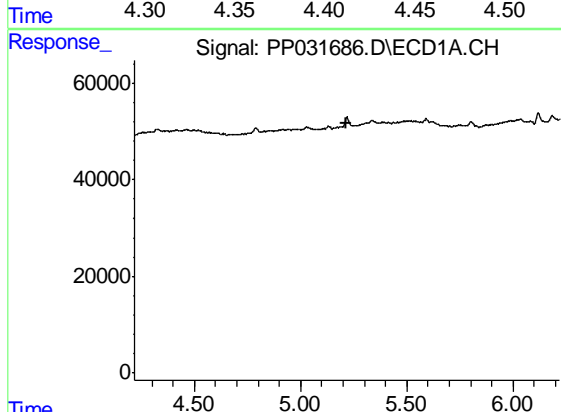
R.T.: 0.000 min  
 Exp R.T. : 5.133 min  
 Response: 0  
 Conc: N.D.

Instrument :  
 ECD\_P  
 ClientSampleId :  
 FD-03DL



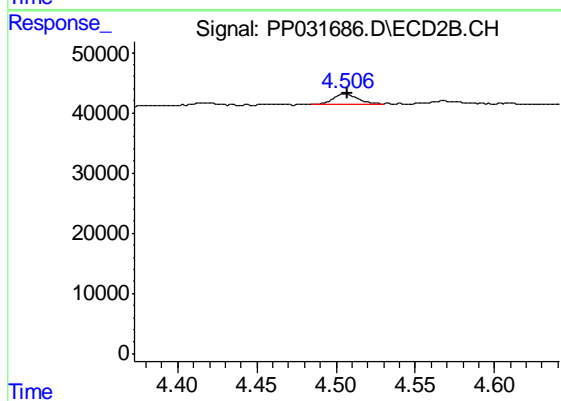
#9 AR-1221-2

R.T.: 4.417 min  
 Delta R.T.: -0.002 min  
 Response: 3993  
 Conc: 10.35 ng/ml



#10 AR-1221-3

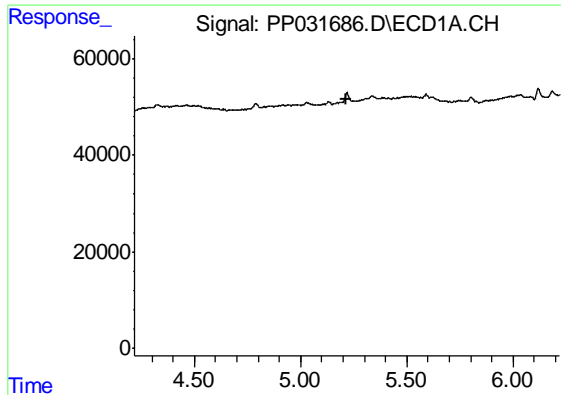
R.T.: 0.000 min  
 Exp R.T. : 5.218 min  
 Response: 0  
 Conc: N.D.



#10 AR-1221-3

R.T.: 4.506 min  
 Delta R.T.: -0.001 min  
 Response: 19901  
 Conc: 16.50 ng/ml

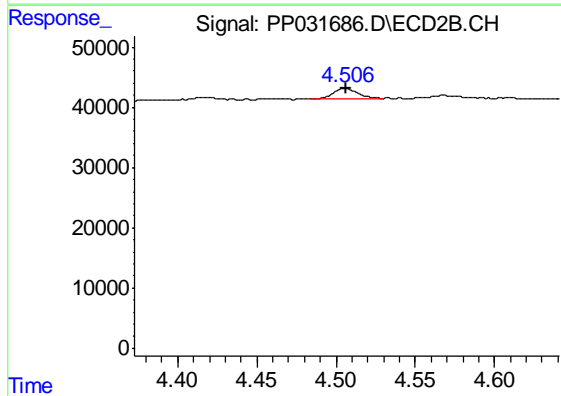




#11 AR-1232-1

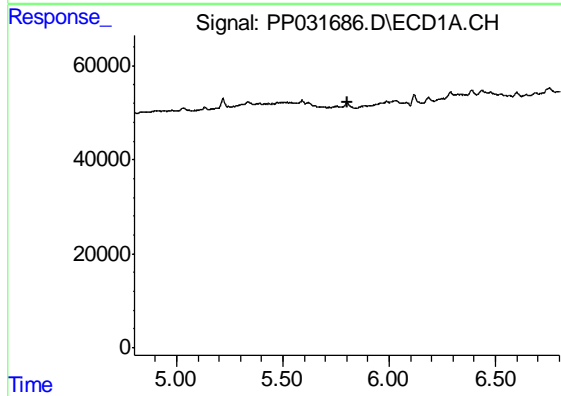
R.T.: 0.000 min  
 Exp R.T. : 5.218 min  
 Response: 0  
 Conc: N.D.

Instrument :  
 ECD\_P  
 ClientSampled :  
 FD-03DL



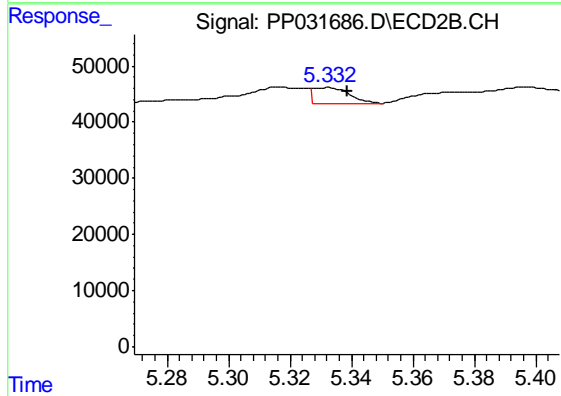
#11 AR-1232-1

R.T.: 4.506 min  
 Delta R.T.: 0.000 min  
 Response: 19901  
 Conc: 19.16 ng/ml



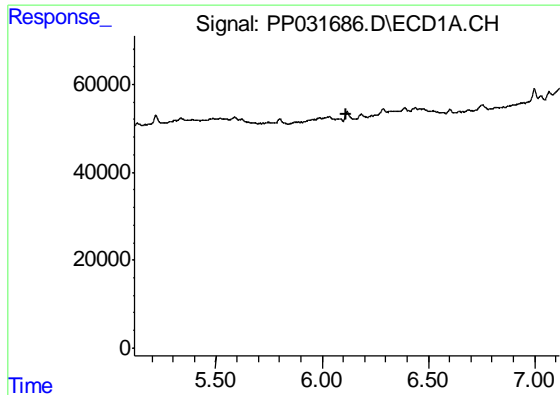
#12 AR-1232-2

R.T.: 0.000 min  
 Exp R.T. : 5.802 min  
 Response: 0  
 Conc: N.D.



#12 AR-1232-2

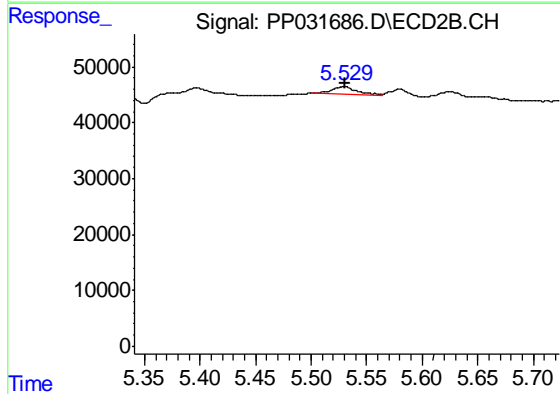
R.T.: 5.332 min  
 Delta R.T.: -0.007 min  
 Response: 23170  
 Conc: 23.79 ng/ml



#13 AR-1232-3

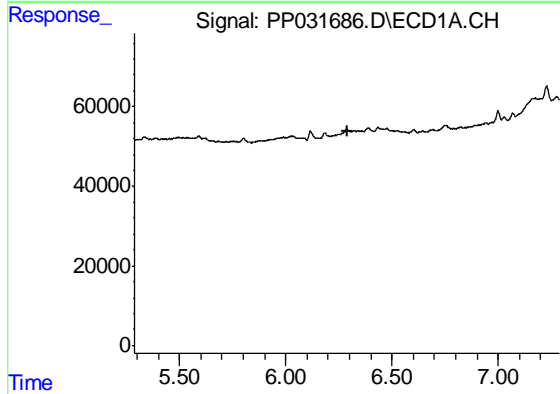
R.T.: 0.000 min  
 Exp R.T. : 6.117 min  
 Response: 0  
 Conc: N.D.

Instrument :  
 ECD\_P  
 ClientSampled :  
 FD-03DL



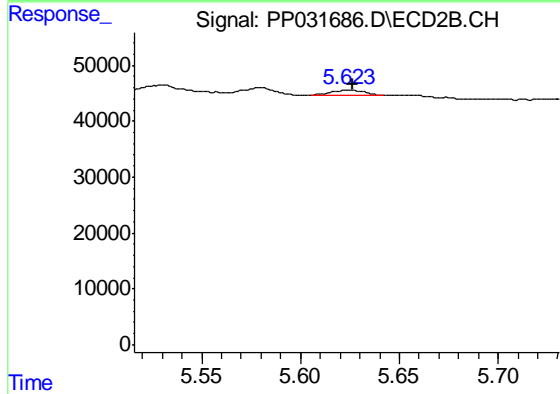
#13 AR-1232-3

R.T.: 5.530 min  
 Delta R.T.: 0.000 min  
 Response: 22157  
 Conc: 42.01 ng/ml



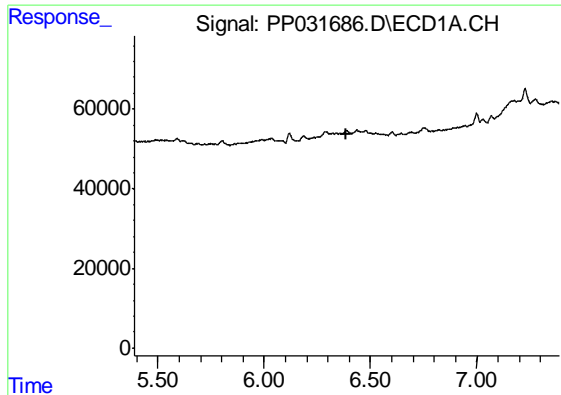
#14 AR-1232-4

R.T.: 0.000 min  
 Exp R.T. : 6.288 min  
 Response: 0  
 Conc: N.D.



#14 AR-1232-4

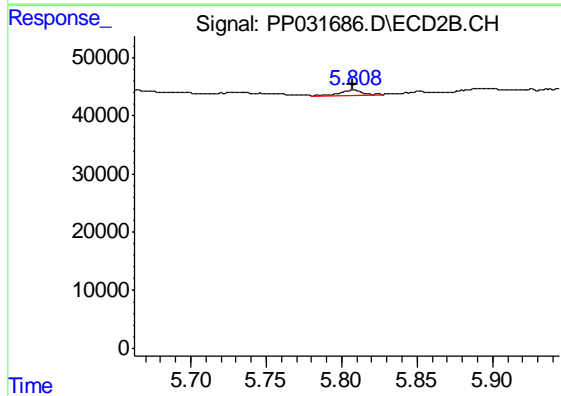
R.T.: 5.624 min  
 Delta R.T.: -0.002 min  
 Response: 11332  
 Conc: 26.83 ng/ml



#15 AR-1232-5

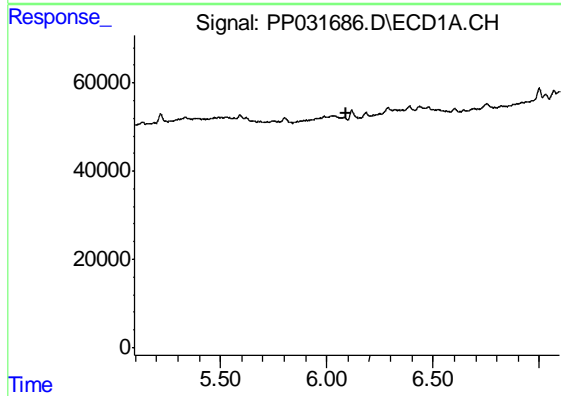
R.T.: 0.000 min  
 Exp R.T. : 6.389 min  
 Response: 0  
 Conc: N.D.

Instrument :  
 ECD\_P  
 ClientSampled :  
 FD-03DL



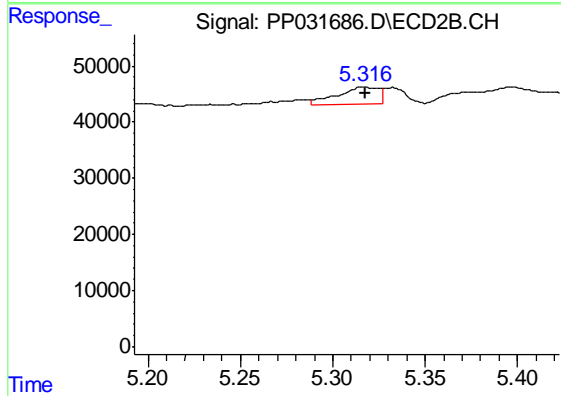
#15 AR-1232-5

R.T.: 5.808 min  
 Delta R.T.: 0.000 min  
 Response: 8206  
 Conc: 28.32 ng/ml



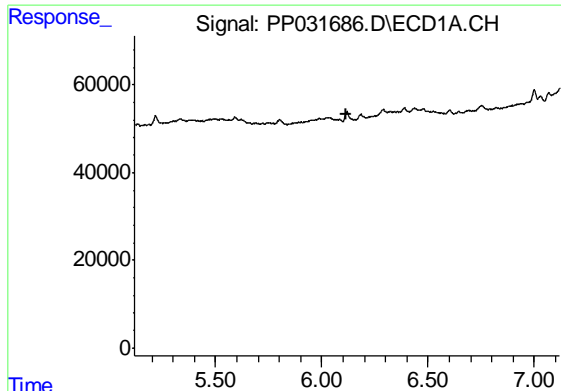
#16 AR-1242-1

R.T.: 0.000 min  
 Exp R.T. : 6.095 min  
 Response: 0  
 Conc: N.D.



#16 AR-1242-1

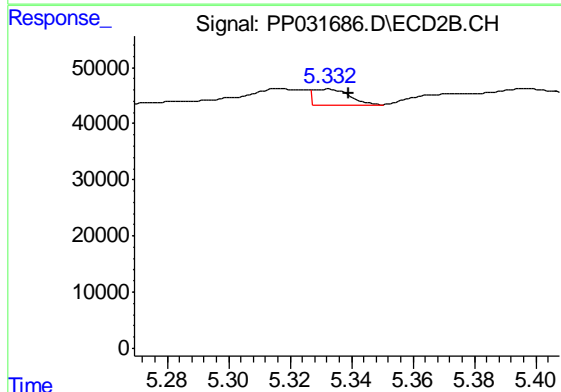
R.T.: 5.316 min  
 Delta R.T.: -0.002 min  
 Response: 47057  
 Conc: 41.22 ng/ml



#17 AR-1242-2

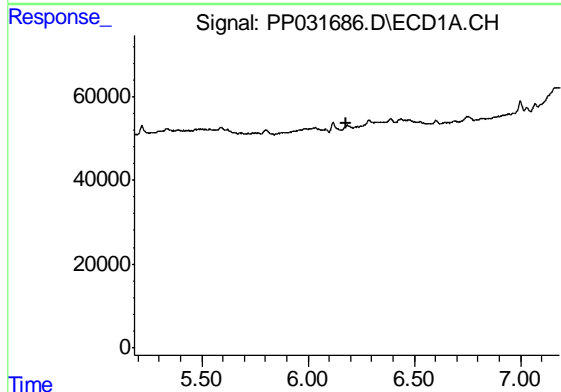
R.T.: 0.000 min  
 Exp R.T. : 6.118 min  
 Response: 0  
 Conc: N.D.

Instrument :  
 ECD\_P  
 ClientSampleId :  
 FD-03DL



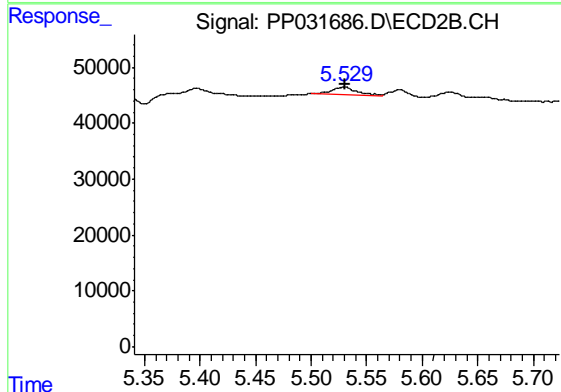
#17 AR-1242-2

R.T.: 5.332 min  
 Delta R.T.: -0.007 min  
 Response: 23170  
 Conc: 13.78 ng/ml



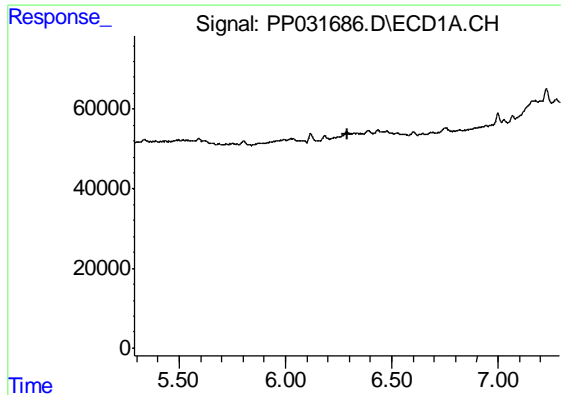
#18 AR-1242-3

R.T.: 0.000 min  
 Exp R.T. : 6.183 min  
 Response: 0  
 Conc: N.D.



#18 AR-1242-3

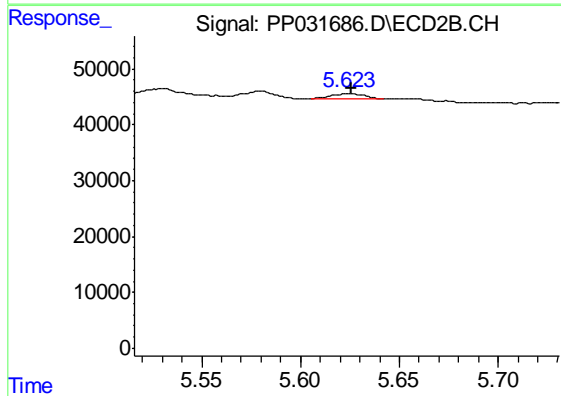
R.T.: 5.530 min  
 Delta R.T.: 0.000 min  
 Response: 22157  
 Conc: 24.27 ng/ml



#19 AR-1242-4

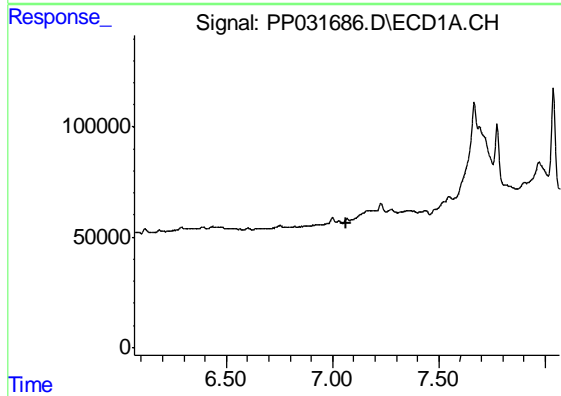
R.T.: 0.000 min  
 Exp R.T. : 6.289 min  
 Response: 0  
 Conc: N.D.

Instrument :  
 ECD\_P  
 ClientSampled :  
 FD-03DL



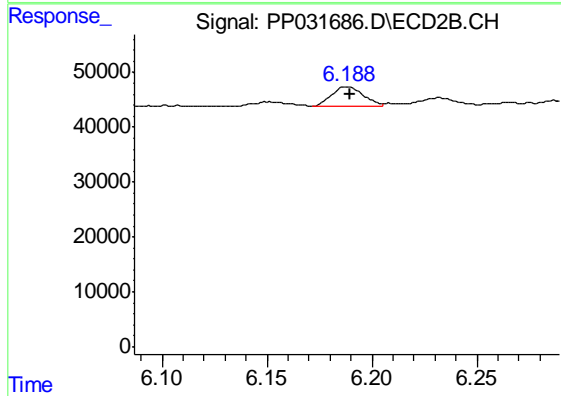
#19 AR-1242-4

R.T.: 5.624 min  
 Delta R.T.: -0.002 min  
 Response: 11332  
 Conc: 13.49 ng/ml



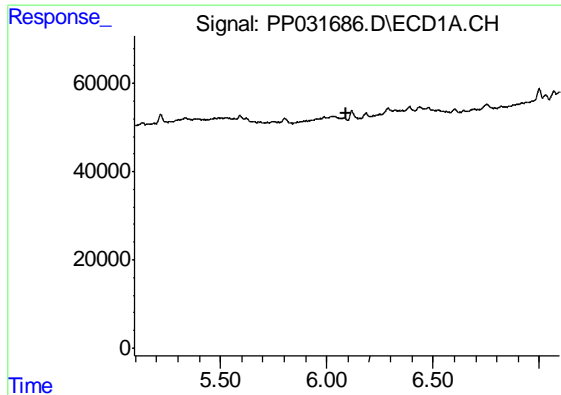
#20 AR-1242-5

R.T.: 0.000 min  
 Exp R.T. : 7.067 min  
 Response: 0  
 Conc: N.D.



#20 AR-1242-5

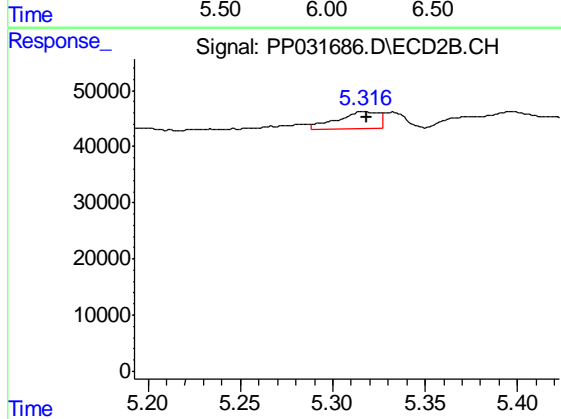
R.T.: 6.188 min  
 Delta R.T.: -0.002 min  
 Response: 37461  
 Conc: 36.31 ng/ml



#21 AR-1248-1

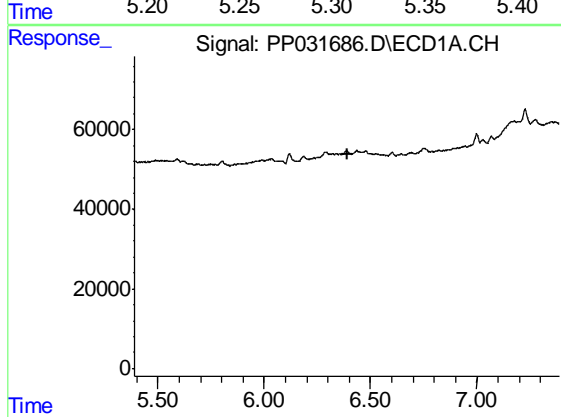
R.T.: 0.000 min  
 Exp R.T. : 6.094 min  
 Response: 0  
 Conc: N.D.

Instrument :  
 ECD\_P  
 ClientSampled :  
 FD-03DL



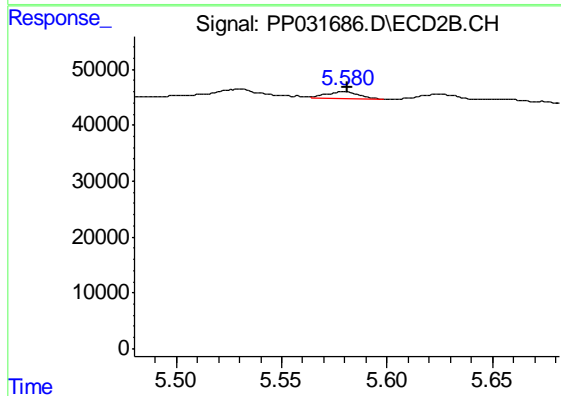
#21 AR-1248-1

R.T.: 5.316 min  
 Delta R.T.: -0.002 min  
 Response: 47057  
 Conc: 54.63 ng/ml



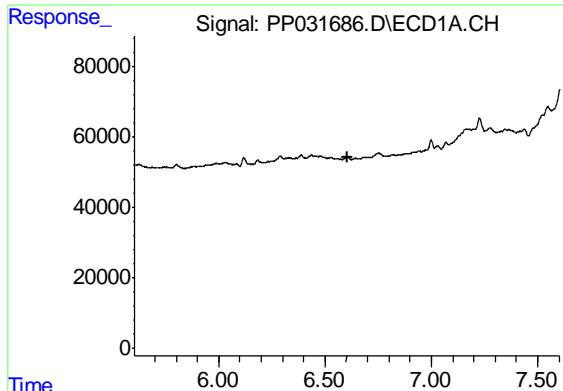
#22 AR-1248-2

R.T.: 0.000 min  
 Exp R.T. : 6.389 min  
 Response: 0  
 Conc: N.D.



#22 AR-1248-2

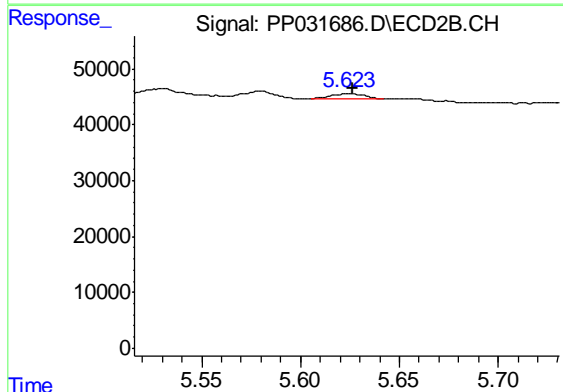
R.T.: 5.580 min  
 Delta R.T.: -0.002 min  
 Response: 12901  
 Conc: 10.81 ng/ml



#23 AR-1248-3

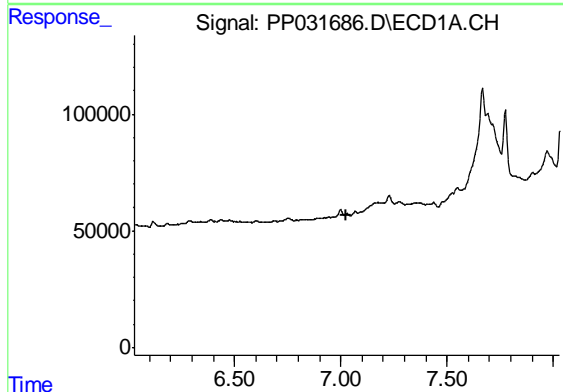
R.T.: 0.000 min  
 Exp R.T. : 6.603 min  
 Response: 0  
 Conc: N.D.

Instrument :  
 ECD\_P  
 ClientSampled :  
 FD-03DL



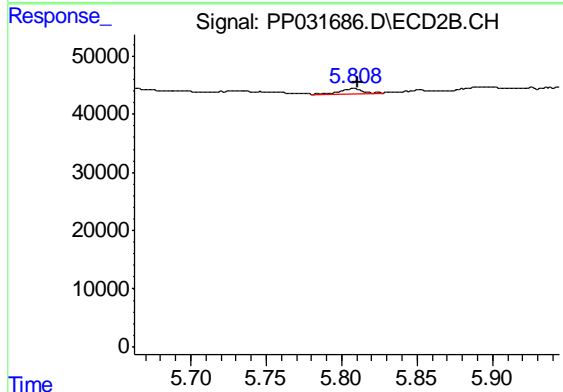
#23 AR-1248-3

R.T.: 5.624 min  
 Delta R.T.: -0.002 min  
 Response: 11332  
 Conc: 8.95 ng/ml



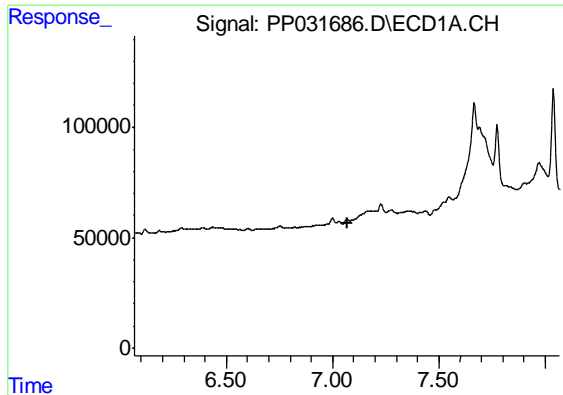
#24 AR-1248-4

R.T.: 0.000 min  
 Exp R.T. : 7.029 min  
 Response: 0  
 Conc: N.D.



#24 AR-1248-4

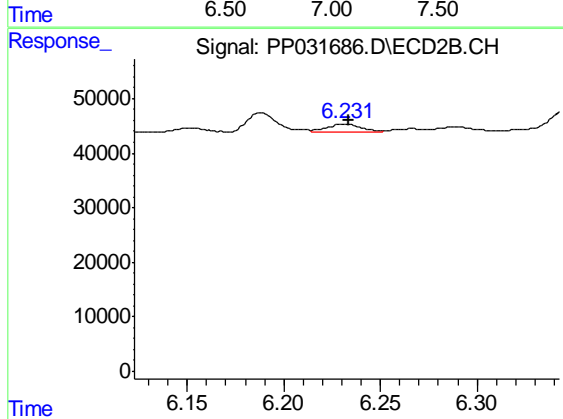
R.T.: 5.808 min  
 Delta R.T.: -0.003 min  
 Response: 8206  
 Conc: 5.36 ng/ml



#25 AR-1248-5

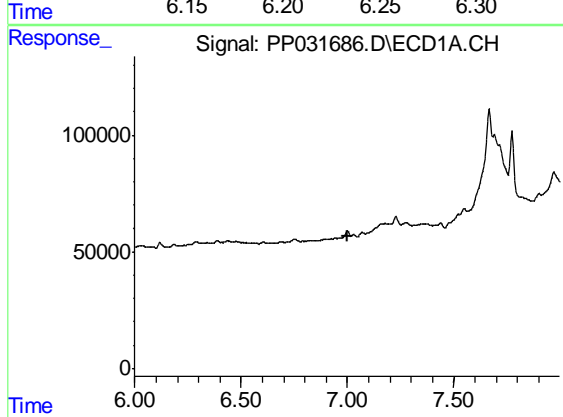
R.T.: 0.000 min  
 Exp R.T. : 7.068 min  
 Response: 0  
 Conc: N.D.

Instrument :  
 ECD\_P  
 ClientSampled :  
 FD-03DL



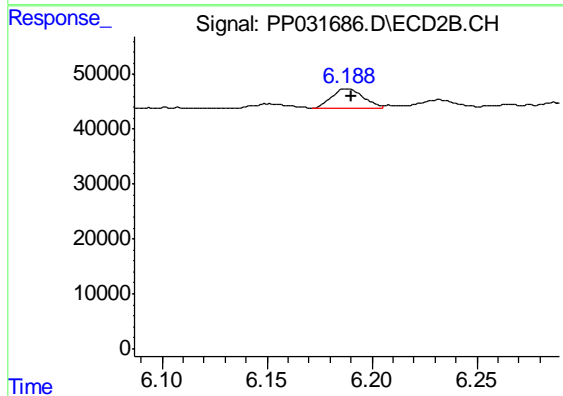
#25 AR-1248-5

R.T.: 6.232 min  
 Delta R.T.: -0.002 min  
 Response: 17211  
 Conc: 11.80 ng/ml



#26 AR-1254-1

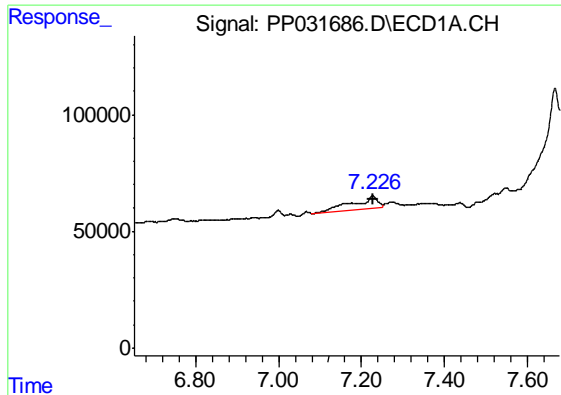
R.T.: 0.000 min  
 Exp R.T. : 6.998 min  
 Response: 0  
 Conc: N.D.



#26 AR-1254-1

R.T.: 6.188 min  
 Delta R.T.: -0.002 min  
 Response: 37461  
 Conc: 17.32 ng/ml

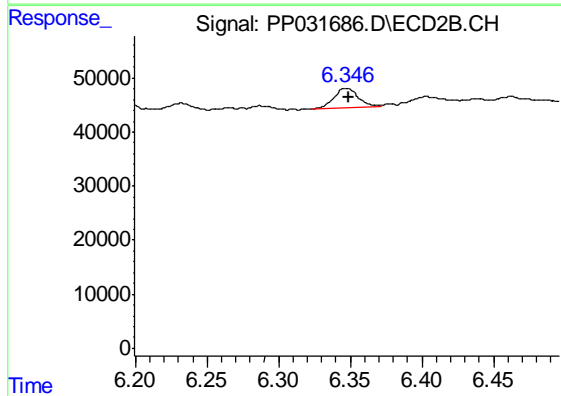




#27 AR-1254-2

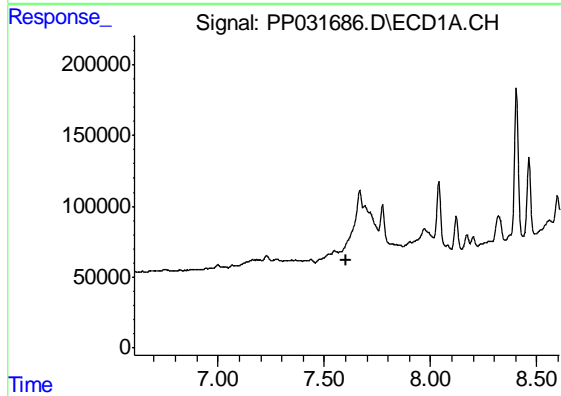
R.T.: 7.226 min  
 Delta R.T.: -0.001 min  
 Response: 229962  
 Conc: 99.02 ng/ml

Instrument :  
 ECD\_P  
 ClientSampleId :  
 FD-03DL



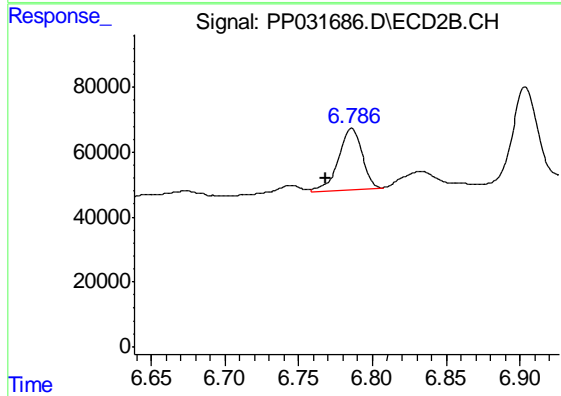
#27 AR-1254-2

R.T.: 6.347 min  
 Delta R.T.: -0.002 min  
 Response: 44735  
 Conc: 24.01 ng/ml



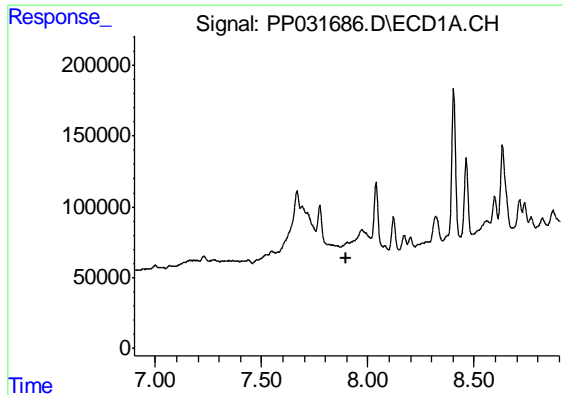
#28 AR-1254-3

R.T.: 0.000 min  
 Exp R.T. : 7.606 min  
 Response: 0  
 Conc: N.D.



#28 AR-1254-3

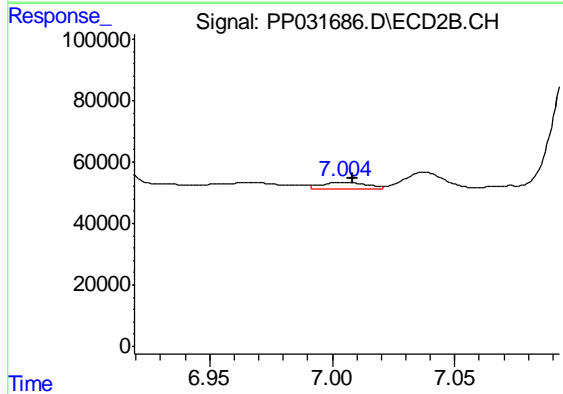
R.T.: 6.786 min  
 Delta R.T.: 0.017 min  
 Response: 211901  
 Conc: 68.55 ng/ml



#29 AR-1254-4

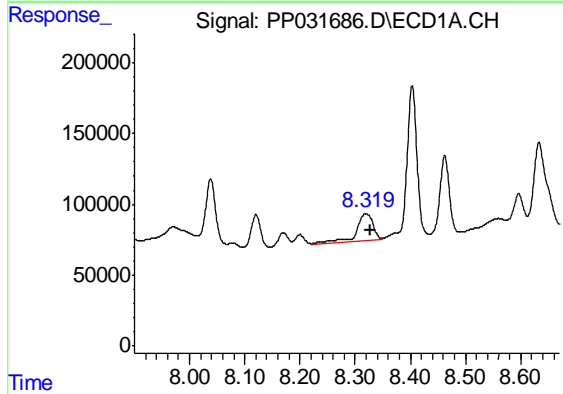
R.T.: 0.000 min  
 Exp R.T. : 7.901 min  
 Response: 0  
 Conc: N.D.

Instrument :  
 ECD\_P  
 ClientSampleId :  
 FD-03DL



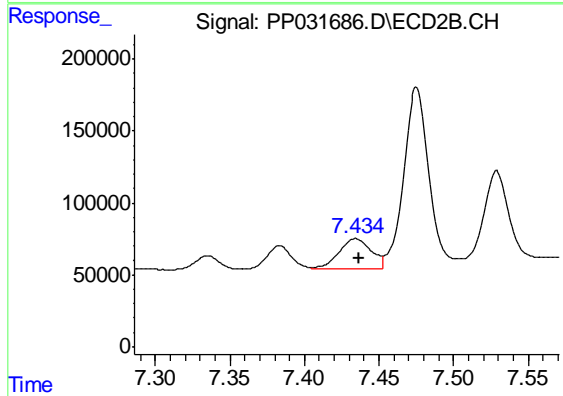
#29 AR-1254-4

R.T.: 7.004 min  
 Delta R.T.: -0.004 min  
 Response: 29353  
 Conc: 17.28 ng/ml



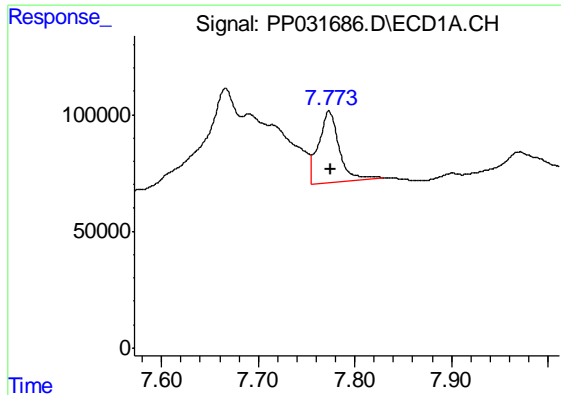
#30 AR-1254-5

R.T.: 8.319 min  
 Delta R.T.: -0.008 min  
 Response: 384765  
 Conc: 205.82 ng/ml



#30 AR-1254-5

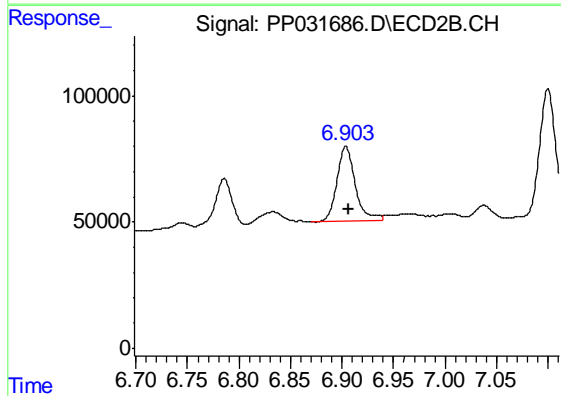
R.T.: 7.434 min  
 Delta R.T.: -0.003 min  
 Response: 324668  
 Conc: 120.27 ng/ml



#31 AR-1260-1

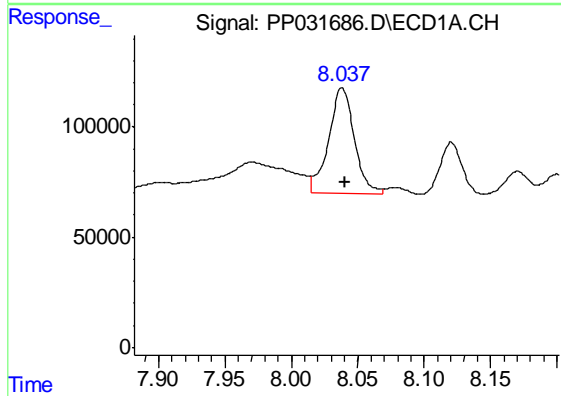
R.T.: 7.773 min  
Delta R.T.: -0.002 min  
Response: 449533  
Conc: 256.87 ng/ml

Instrument :  
ECD\_P  
ClientSampleId :  
FD-03DL



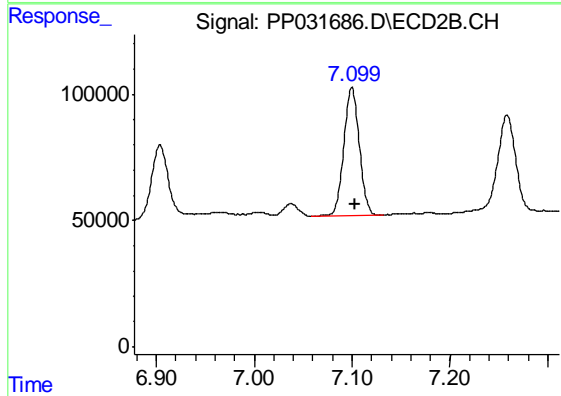
#31 AR-1260-1

R.T.: 6.904 min  
Delta R.T.: -0.003 min  
Response: 370463  
Conc: 187.47 ng/ml



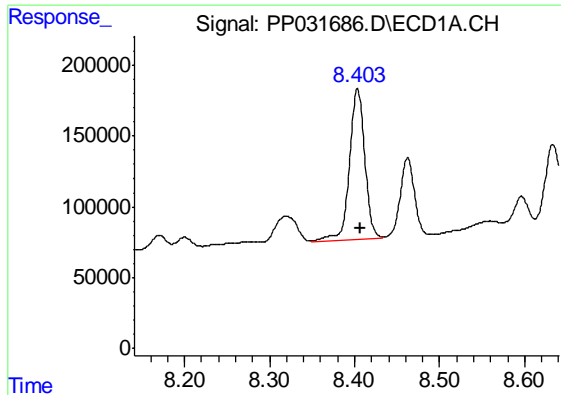
#32 AR-1260-2

R.T.: 8.038 min  
Delta R.T.: -0.002 min  
Response: 637656  
Conc: 310.33 ng/ml



#32 AR-1260-2

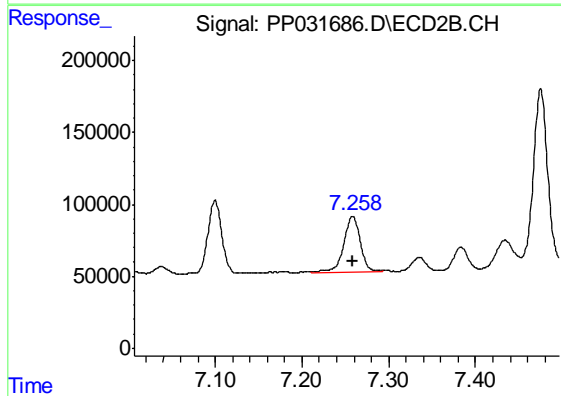
R.T.: 7.100 min  
Delta R.T.: -0.003 min  
Response: 565852  
Conc: 232.36 ng/ml



#33 AR-1260-3

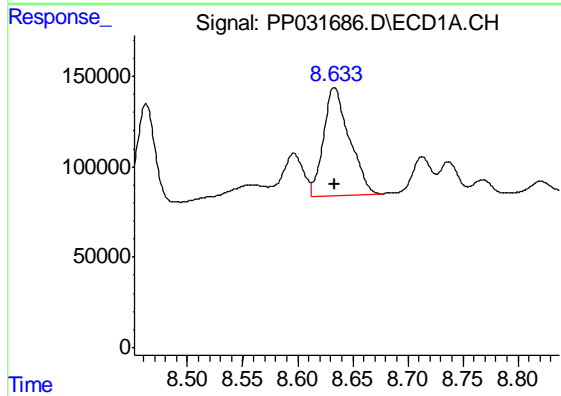
R.T.: 8.403 min  
 Delta R.T.: -0.003 min  
 Response: 1324158  
 Conc: 811.85 ng/ml

Instrument :  
 ECD\_P  
 ClientSampleId :  
 FD-03DL



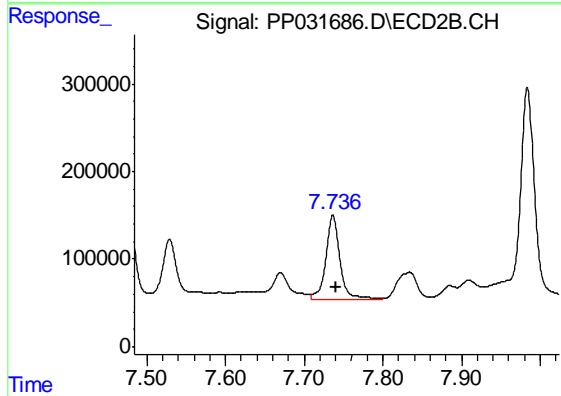
#33 AR-1260-3

R.T.: 7.258 min  
 Delta R.T.: 0.000 min  
 Response: 507586  
 Conc: 222.27 ng/ml



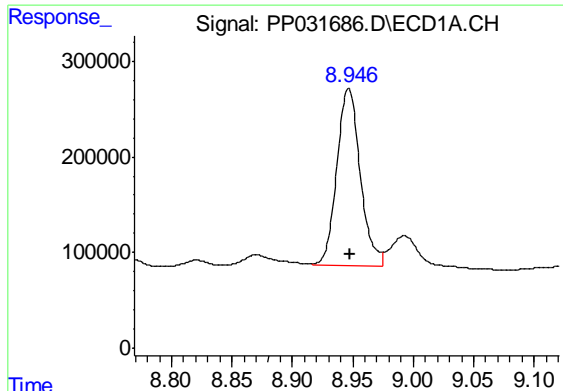
#34 AR-1260-4

R.T.: 8.633 min  
 Delta R.T.: 0.000 min  
 Response: 980432  
 Conc: 532.45 ng/ml



#34 AR-1260-4

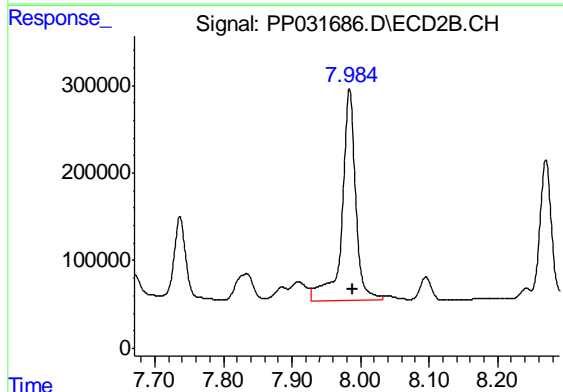
R.T.: 7.737 min  
 Delta R.T.: -0.005 min  
 Response: 1207211  
 Conc: 635.33 ng/ml



#35 AR-1260-5

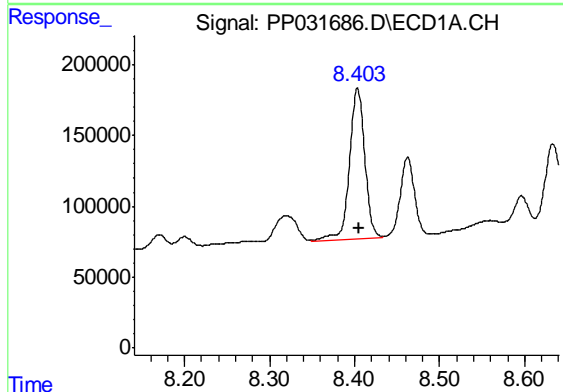
R.T.: 8.947 min  
 Delta R.T.: -0.001 min  
 Response: 2503667  
 Conc: 679.01 ng/ml

Instrument :  
 ECD\_P  
 ClientSampleId :  
 FD-03DL



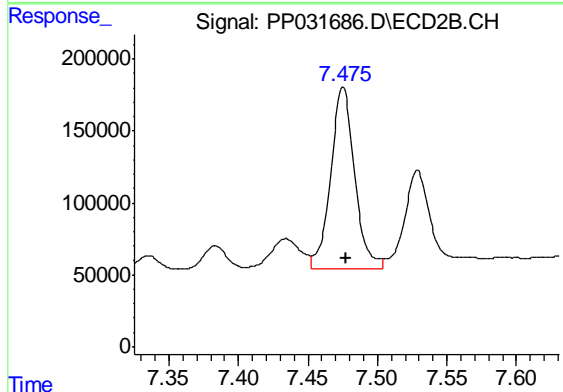
#35 AR-1260-5

R.T.: 7.984 min  
 Delta R.T.: -0.004 min  
 Response: 3355305  
 Conc: 739.39 ng/ml



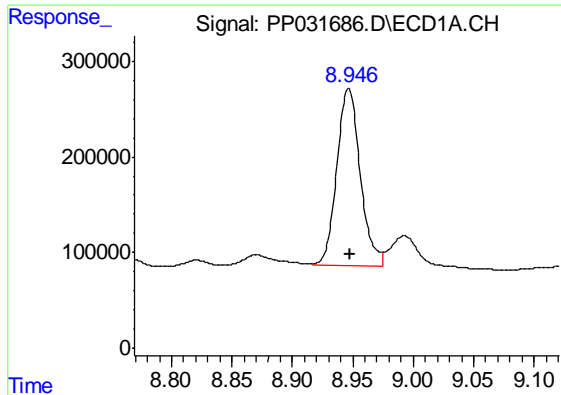
#36 AR-1262-1

R.T.: 8.403 min  
 Delta R.T.: -0.001 min  
 Response: 1324158  
 Conc: 582.80 ng/ml



#36 AR-1262-1

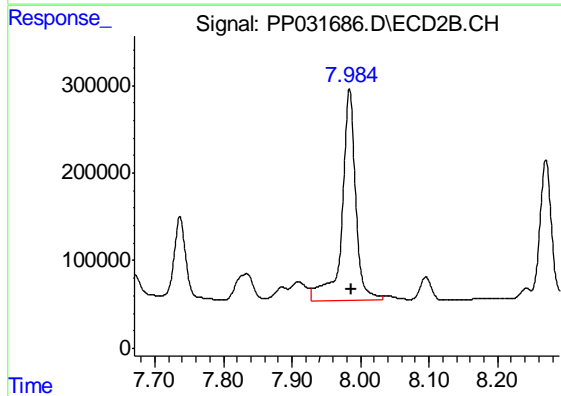
R.T.: 7.475 min  
 Delta R.T.: -0.002 min  
 Response: 1522776  
 Conc: 547.91 ng/ml



#37 AR-1262-2

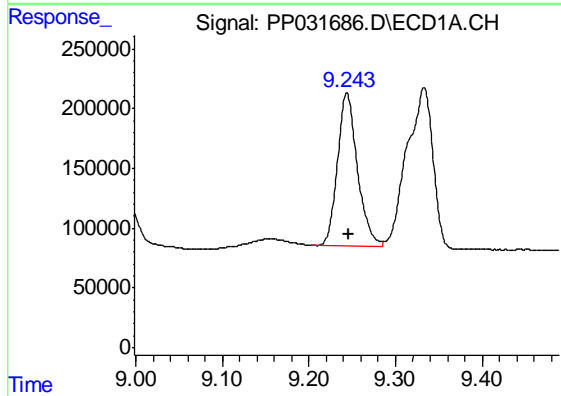
R.T.: 8.947 min  
 Delta R.T.: 0.000 min  
 Response: 2503667  
 Conc: 630.08 ng/ml

Instrument :  
 ECD\_P  
 ClientSampled :  
 FD-03DL



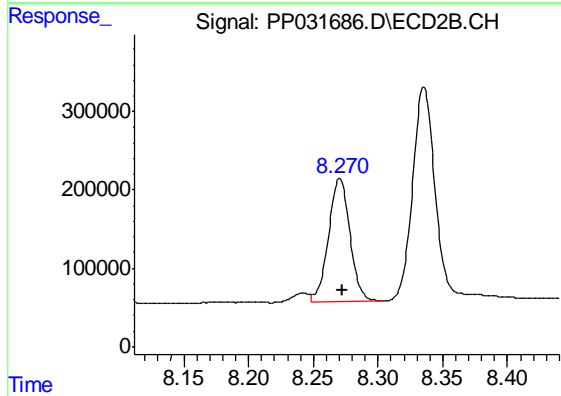
#37 AR-1262-2

R.T.: 7.984 min  
 Delta R.T.: -0.003 min  
 Response: 3355305  
 Conc: 690.77 ng/ml



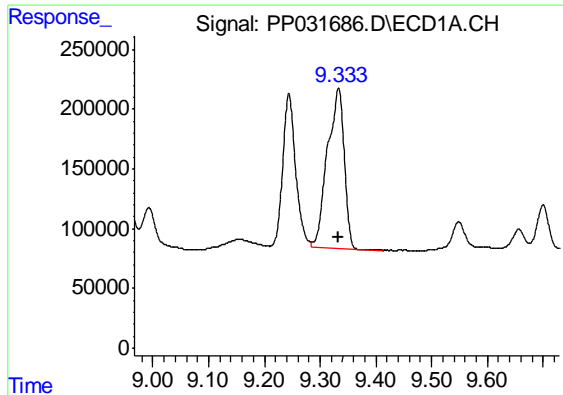
#38 AR-1262-3

R.T.: 9.244 min  
 Delta R.T.: -0.002 min  
 Response: 2053086  
 Conc: 738.18 ng/ml



#38 AR-1262-3

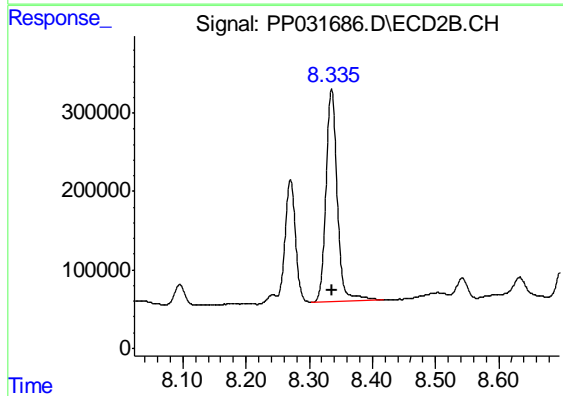
R.T.: 8.271 min  
 Delta R.T.: -0.002 min  
 Response: 1799878  
 Conc: 915.08 ng/ml



#39 AR-1262-4

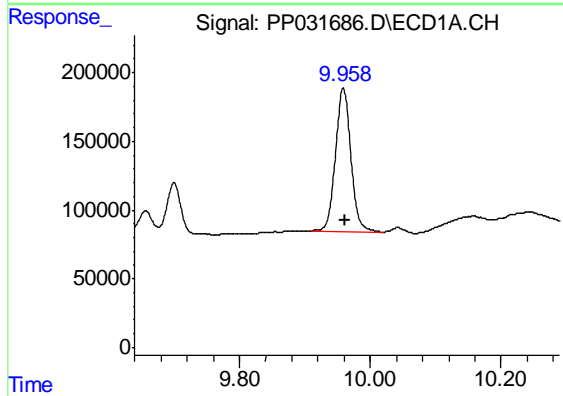
R.T.: 9.333 min  
Delta R.T.: 0.000 min  
Response: 2807457  
Conc: 1280.70 ng/ml

Instrument :  
ECD\_P  
ClientSampleId :  
FD-03DL



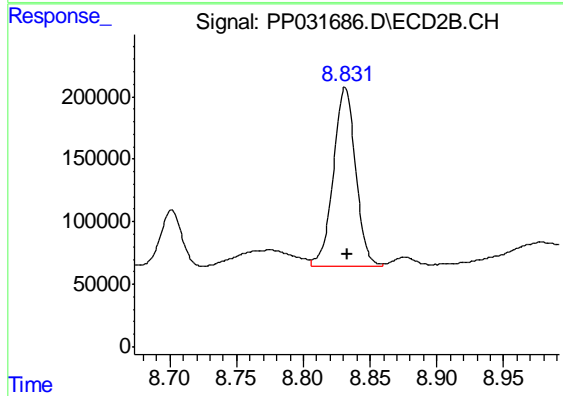
#39 AR-1262-4

R.T.: 8.336 min  
Delta R.T.: 0.000 min  
Response: 3362943  
Conc: 927.66 ng/ml



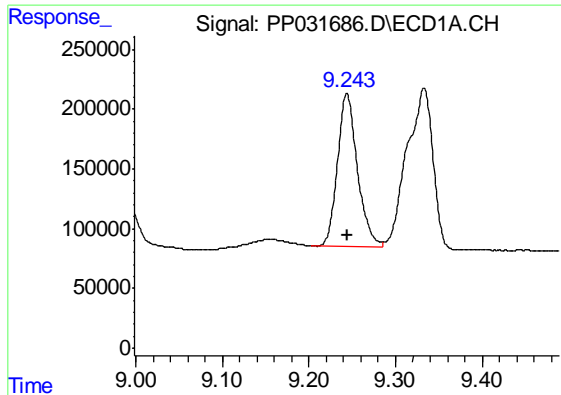
#40 AR-1262-5

R.T.: 9.959 min  
Delta R.T.: -0.002 min  
Response: 1716073  
Conc: 1175.38 ng/ml



#40 AR-1262-5

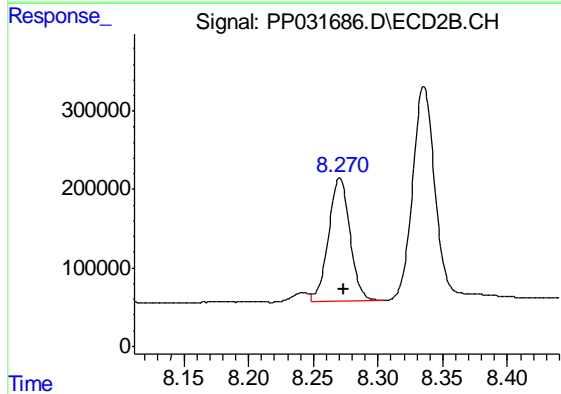
R.T.: 8.831 min  
Delta R.T.: -0.002 min  
Response: 1658295  
Conc: 1021.63 ng/ml



#41 AR-1268-1

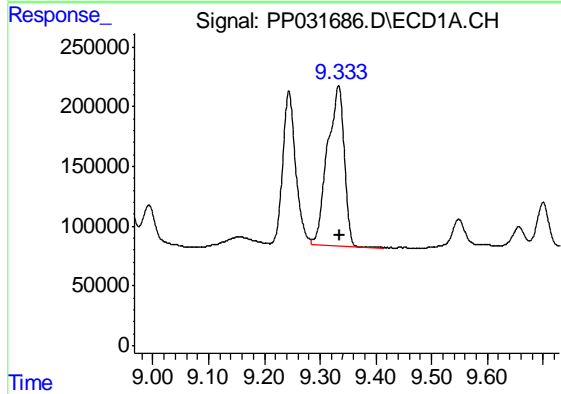
R.T.: 9.244 min  
 Delta R.T.: 0.000 min  
 Response: 2053086  
 Conc: 427.23 ng/ml

Instrument :  
 ECD\_P  
 ClientSampled :  
 FD-03DL



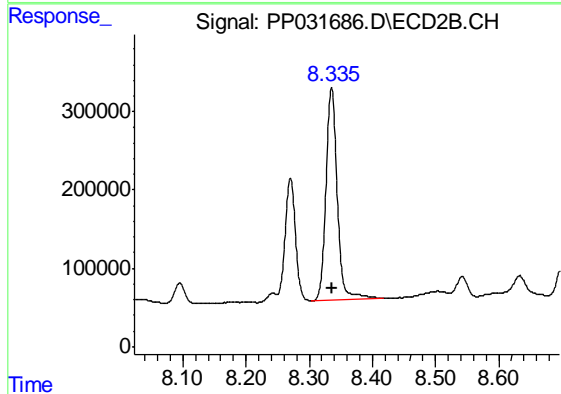
#41 AR-1268-1

R.T.: 8.271 min  
 Delta R.T.: -0.003 min  
 Response: 1799878  
 Conc: 325.30 ng/ml



#42 AR-1268-2

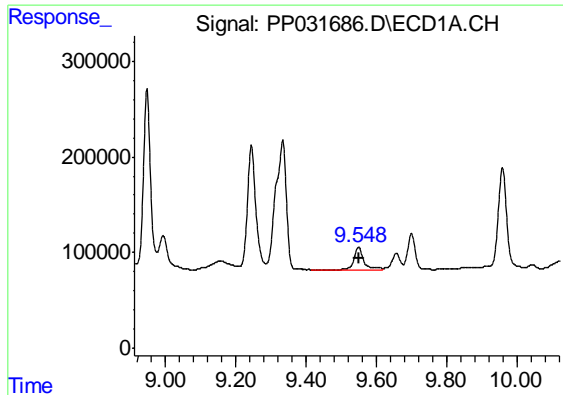
R.T.: 9.333 min  
 Delta R.T.: -0.002 min  
 Response: 2807457  
 Conc: 603.08 ng/ml



#42 AR-1268-2

R.T.: 8.336 min  
 Delta R.T.: -0.002 min  
 Response: 3362943  
 Conc: 622.00 ng/ml

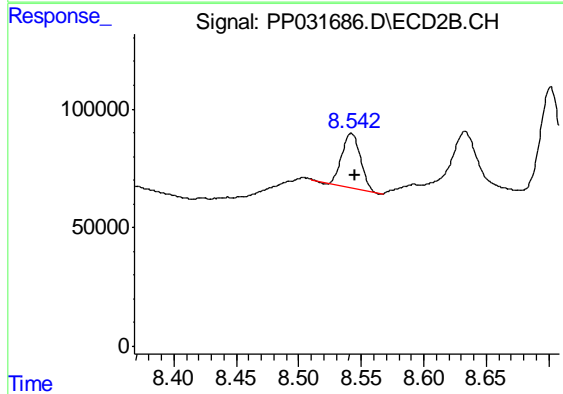




#43 AR-1268-3

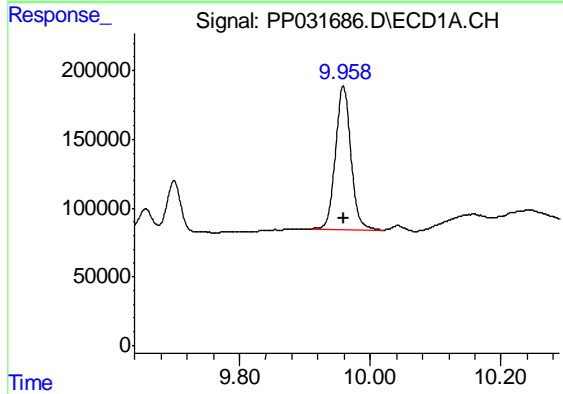
R.T.: 9.549 min  
 Delta R.T.: -0.001 min  
 Response: 455103  
 Conc: 112.54 ng/ml

Instrument :  
 ECD\_P  
 ClientSampleId :  
 FD-03DL



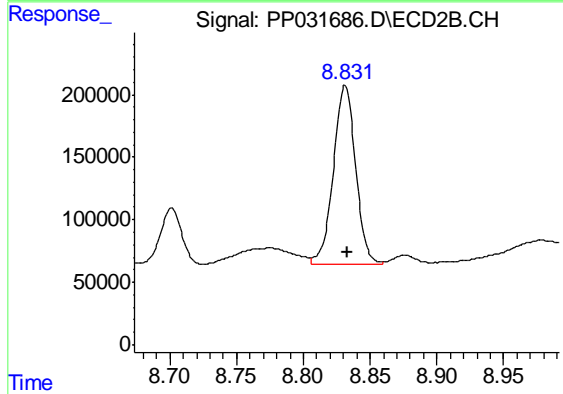
#43 AR-1268-3

R.T.: 8.542 min  
 Delta R.T.: -0.003 min  
 Response: 233323  
 Conc: 50.87 ng/ml



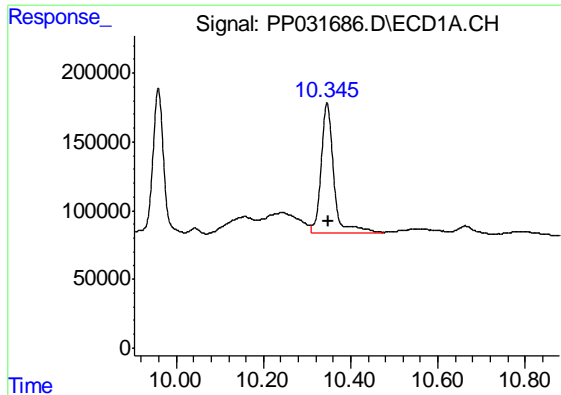
#44 AR-1268-4

R.T.: 9.959 min  
 Delta R.T.: 0.000 min  
 Response: 1716073  
 Conc: 1104.80 ng/ml



#44 AR-1268-4

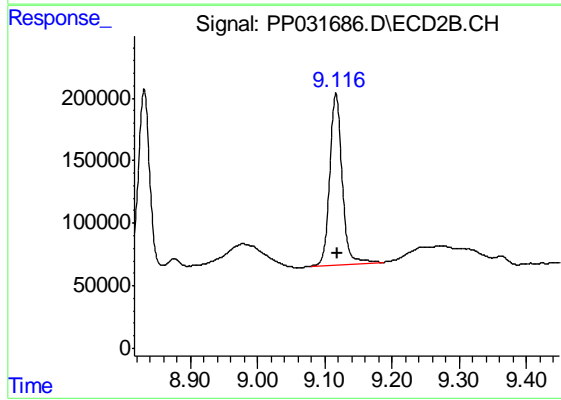
R.T.: 8.831 min  
 Delta R.T.: -0.002 min  
 Response: 1658295  
 Conc: 909.80 ng/ml



#45 AR-1268-5

R.T.: 10.346 min  
Delta R.T.: -0.002 min  
Response: 1878540  
Conc: 154.00 ng/ml

Instrument :  
ECD\_P  
ClientSampleId :  
FD-03DL



#45 AR-1268-5

R.T.: 9.117 min  
Delta R.T.: -0.003 min  
Response: 1748636  
Conc: 126.28 ng/ml