

Data Path : Z:\pestpcbsrv\HPCHEM1\ECD_P\Data\PP112520\
 Data File : PP031700.D
 Signal(s) : Signal #1: ECD1A.CH Signal #2: ECD2B.CH
 Acq On : 25 Nov 2020 19:12
 Operator : DD\AJ
 Sample : L4890-02
 Misc :
 ALS Vial : 25 Sample Multiplier: 1

Instrument :
 ECD_P
 ClientSampleId :
 K205-9B-2

Integration File signal 1: autoint1.e
 Integration File signal 2: autoint2.e
 Quant Time: Nov 27 00:49:00 2020
 Quant Method : Z:\pestpcbsrv\HPCHEM1\ECD_P\methods\PP112220.M
 Quant Title : GC EXTRACTABLES
 QLast Update : Tue Nov 24 12:23:58 2020
 Response via : Initial Calibration
 Integrator: ChemStation 6890 Scale Mode: Small noise peaks clipped

Volume Inj. : 2 µl
 Signal #1 Phase : ZB-MR2 Signal #2 Phase: ZB-MR2
 Signal #1 Info : 30Mx0.32mmx 0.50µ Signal #2 Info : 30M x 0.32mm x 0.25µm

Compound	RT#1	RT#2	Resp#1	Resp#2	ng/ml	ng/ml

System Monitoring Compounds						
1) SA Tetrachlo...	4.790	4.062	1101731	1038408	22.752	21.670
2) SA Decachlor...	10.660	9.362	660871	715029	19.458	19.311
Target Compounds						
31) L7 AR-1260-1	7.774	6.901	2164824	2457934	1237.012	1243.838
32) L7 AR-1260-2	8.038	7.099	3347189	3566691	1629.007	1464.614
33) L7 AR-1260-3	8.403	7.254	2523366	3046149	1547.095	1333.901
34) L7 AR-1260-4	8.632	7.736	3102446	3167670	1684.878	1667.091
35) L7 AR-1260-5	8.946	7.983	7001172	8717201	1898.771	1920.956

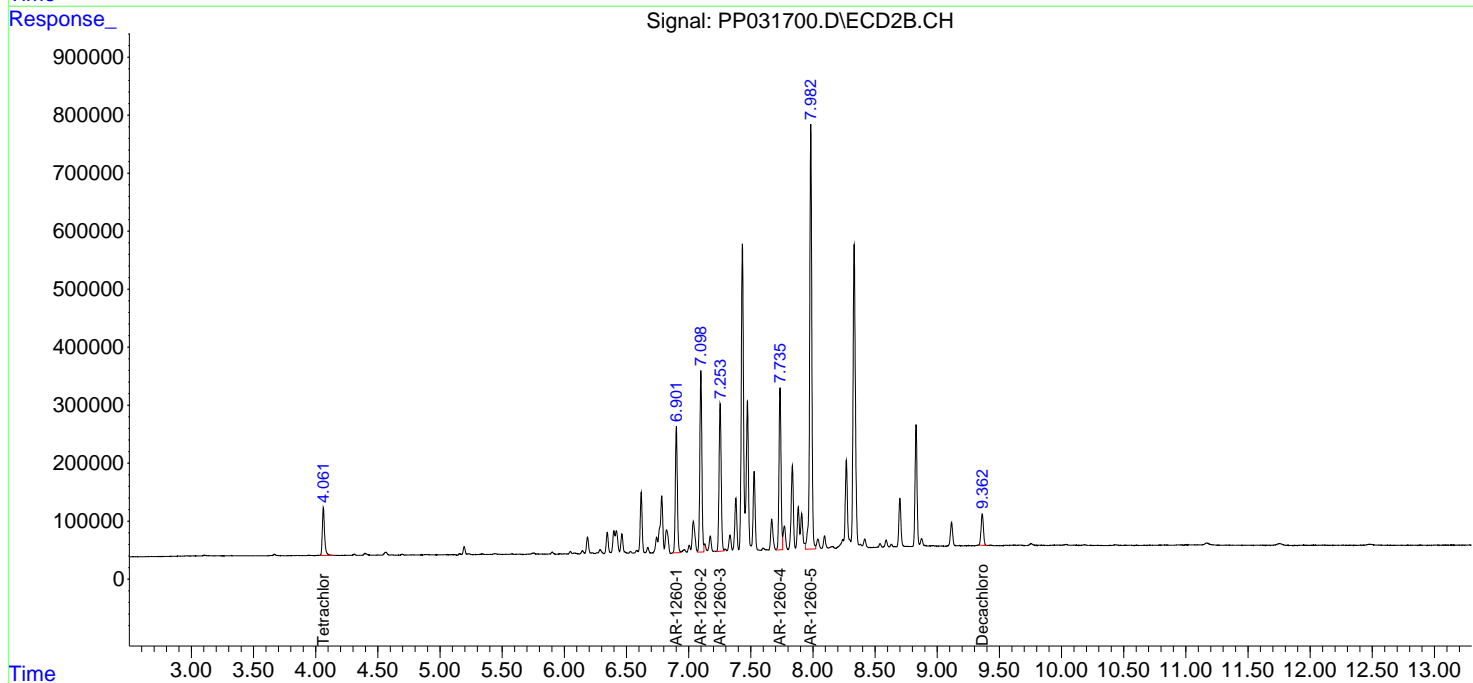
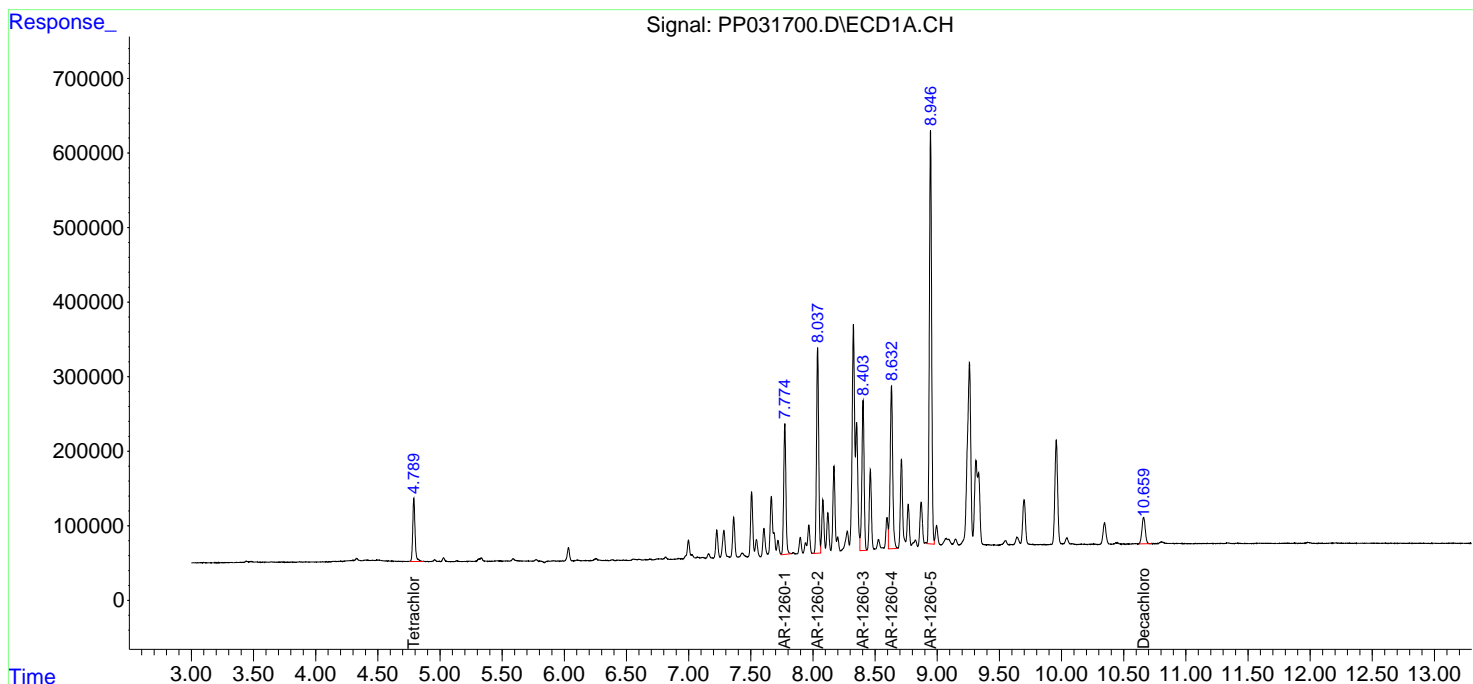
(f)=RT Delta > 1/2 Window (#)=Amounts differ by > 25% (m)=manual int.

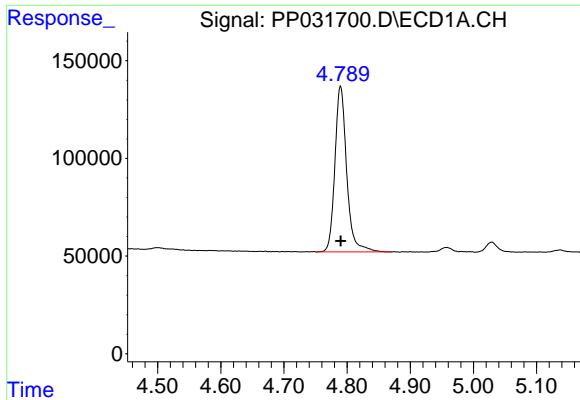
Data Path : Z:\pestpcbsrv\HPCHEM1\ECD_P\Data\PP112520\
 Data File : PP031700.D
 Signal(s) : Signal #1: ECD1A.CH Signal #2: ECD2B.CH
 Acq On : 25 Nov 2020 19:12
 Operator : DD\AJ
 Sample : L4890-02
 Misc :
 ALS Vial : 25 Sample Multiplier: 1

Instrument :
 ECD_P
 ClientSampled :
 K205-9B-2

Integration File signal 1: autoint1.e
 Integration File signal 2: autoint2.e
 Quant Time: Nov 27 00:49:00 2020
 Quant Method : Z:\pestpcbsrv\HPCHEM1\ECD_P\methods\PP112220.M
 Quant Title : GC EXTRACTABLES
 QLast Update : Tue Nov 24 12:23:58 2020
 Response via : Initial Calibration
 Integrator: ChemStation 6890 Scale Mode: Small noise peaks clipped

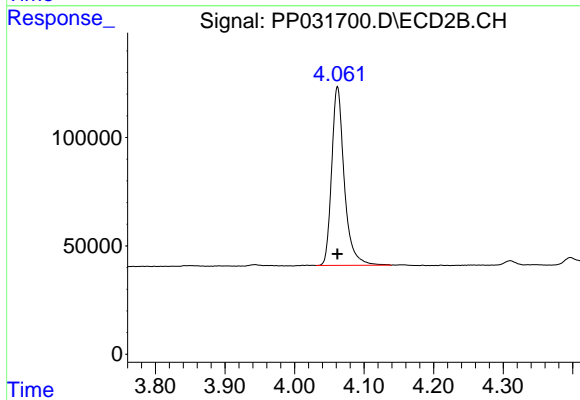
Volume Inj. : 2 µl
 Signal #1 Phase : ZB-MR1 Signal #2 Phase: ZB-MR2
 Signal #1 Info : 30Mx0.32mmx 0.50µ Signal #2 Info : 30M x 0.32mm x 0.25µm



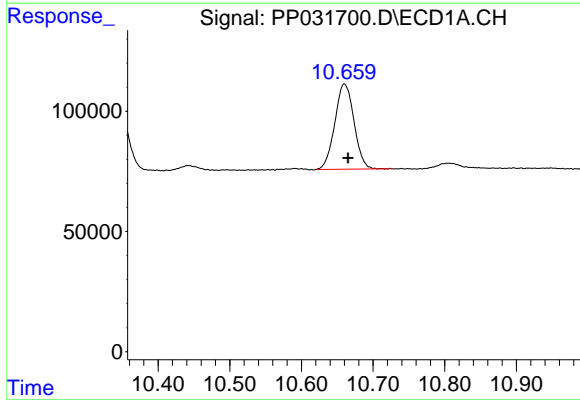


#1 Tetrachloro-m-xylene
 R.T.: 4.790 min
 Delta R.T.: 0.000 min
 Response: 1101731
 Conc: 22.75 ng/ml

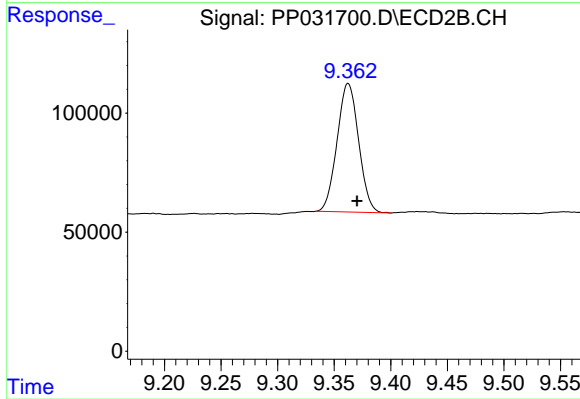
Instrument :
 ECD_P
 ClientSampleId :
 K205-9B-2



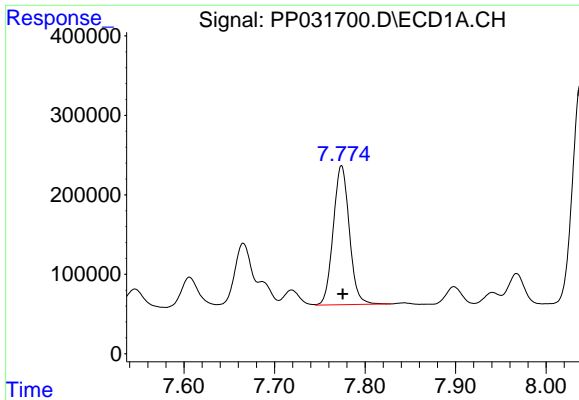
#1 Tetrachloro-m-xylene
 R.T.: 4.062 min
 Delta R.T.: 0.000 min
 Response: 1038408
 Conc: 21.67 ng/ml



#2 Decachlorobiphenyl
 R.T.: 10.660 min
 Delta R.T.: -0.005 min
 Response: 660871
 Conc: 19.46 ng/ml



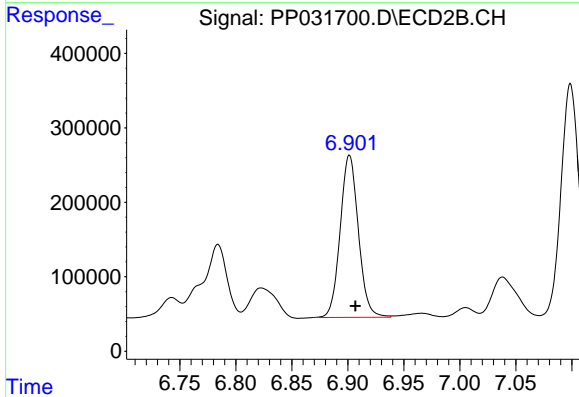
#2 Decachlorobiphenyl
 R.T.: 9.362 min
 Delta R.T.: -0.008 min
 Response: 715029
 Conc: 19.31 ng/ml



#31 AR-1260-1

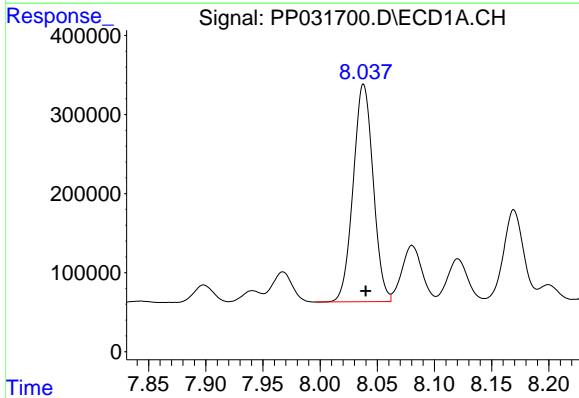
R.T.: 7.774 min
 Delta R.T.: -0.001 min
 Response: 2164824
 Conc: 1237.01 ng/ml

Instrument :
 ECD_P
 ClientSampleId :
 K205-9B-2



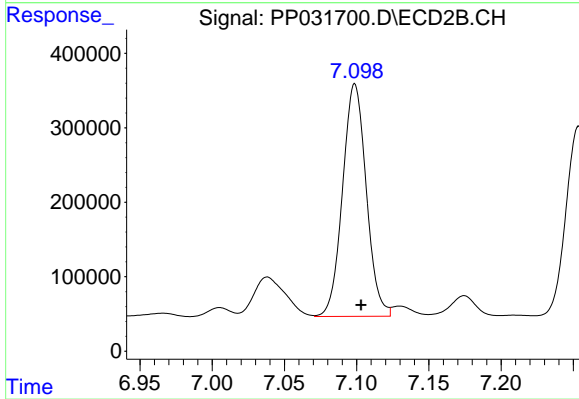
#31 AR-1260-1

R.T.: 6.901 min
 Delta R.T.: -0.005 min
 Response: 2457934
 Conc: 1243.84 ng/ml



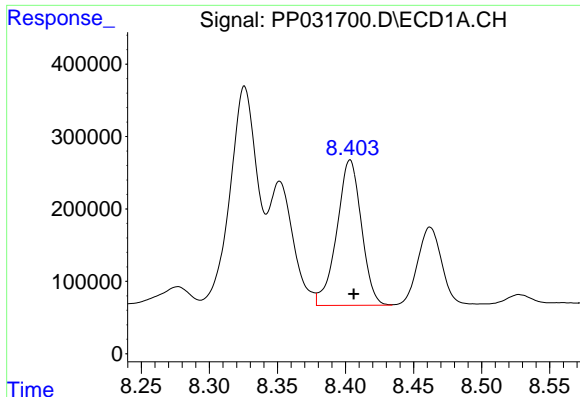
#32 AR-1260-2

R.T.: 8.038 min
 Delta R.T.: -0.002 min
 Response: 3347189
 Conc: 1629.01 ng/ml



#32 AR-1260-2

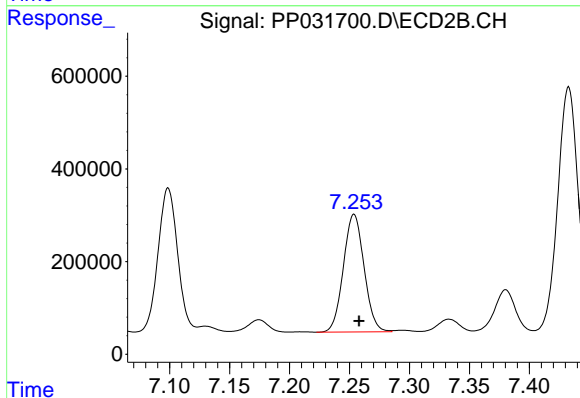
R.T.: 7.099 min
 Delta R.T.: -0.004 min
 Response: 3566691
 Conc: 1464.61 ng/ml



#33 AR-1260-3

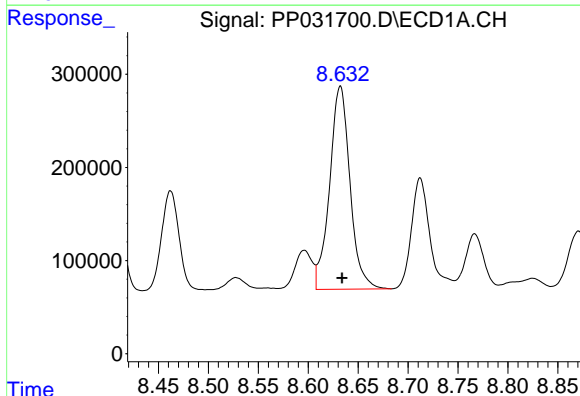
R.T.: 8.403 min
 Delta R.T.: -0.003 min
 Response: 2523366
 Conc: 1547.10 ng/ml

Instrument :
 ECD_P
 ClientSampleId :
 K205-9B-2



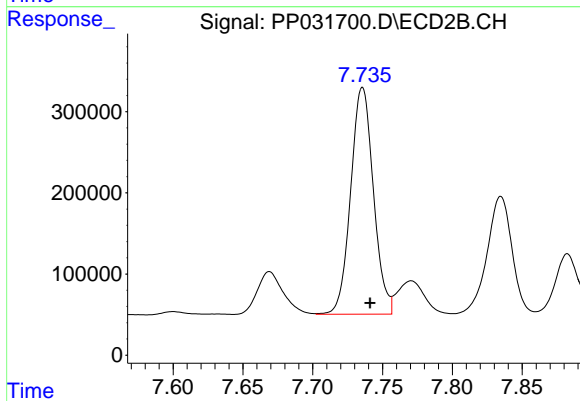
#33 AR-1260-3

R.T.: 7.254 min
 Delta R.T.: -0.004 min
 Response: 3046149
 Conc: 1333.90 ng/ml



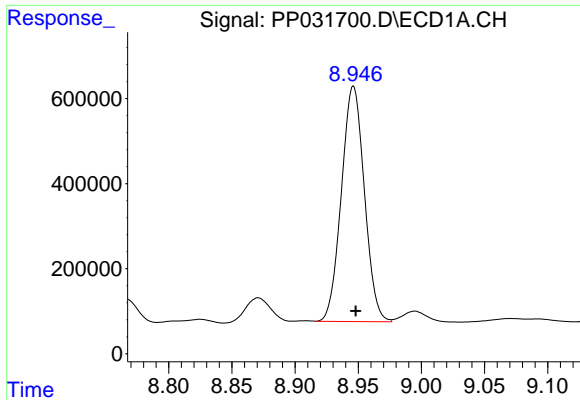
#34 AR-1260-4

R.T.: 8.632 min
 Delta R.T.: -0.002 min
 Response: 3102446
 Conc: 1684.88 ng/ml



#34 AR-1260-4

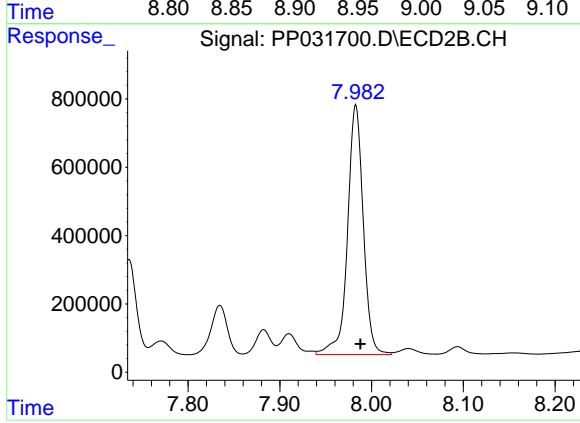
R.T.: 7.736 min
 Delta R.T.: -0.006 min
 Response: 3167670
 Conc: 1667.09 ng/ml



#35 AR-1260-5

R.T.: 8.946 min
Delta R.T.: -0.002 min
Response: 7001172
Conc: 1898.77 ng/ml

Instrument :
ECD_P
ClientSampleId :
K205-9B-2



#35 AR-1260-5

R.T.: 7.983 min
Delta R.T.: -0.005 min
Response: 8717201
Conc: 1920.96 ng/ml