

Data Path : Z:\pestpcbsrv\HPCHEM1\ECD_P\Data\PP112520\
 Data File : PP031703.D
 Signal(s) : Signal #1: ECD1A.CH Signal #2: ECD2B.CH
 Acq On : 25 Nov 2020 20:18
 Operator : DD\AJ
 Sample : L4891-03
 Misc :
 ALS Vial : 26 Sample Multiplier: 1

Instrument :
 ECD_P
 ClientSampleId :
 PAV-B3-112420-0-10

Integration File signal 1: autoint1.e
 Integration File signal 2: autoint2.e
 Quant Time: Nov 27 00:51:08 2020
 Quant Method : Z:\pestpcbsrv\HPCHEM1\ECD_P\methods\PP112220.M
 Quant Title : GC EXTRACTABLES
 QLast Update : Tue Nov 24 12:23:58 2020
 Response via : Initial Calibration
 Integrator: ChemStation 6890 Scale Mode: Small noise peaks clipped

Volume Inj. : 2 µl
 Signal #1 Phase : ZB-MR1 Signal #2 Phase: ZB-MR2
 Signal #1 Info : 30Mx0.32mmx 0.50µ Signal #2 Info : 30M x 0.32mm x 0.25µm

Compound	RT#1	RT#2	Resp#1	Resp#2	ng/ml	ng/ml

System Monitoring Compounds						
1) SA Tetrachlo...	4.791	4.062	1161424	1100441	23.985	22.965
2) SA Decachlor...	10.662	9.363	773003	840356	22.759	22.696

Target Compounds

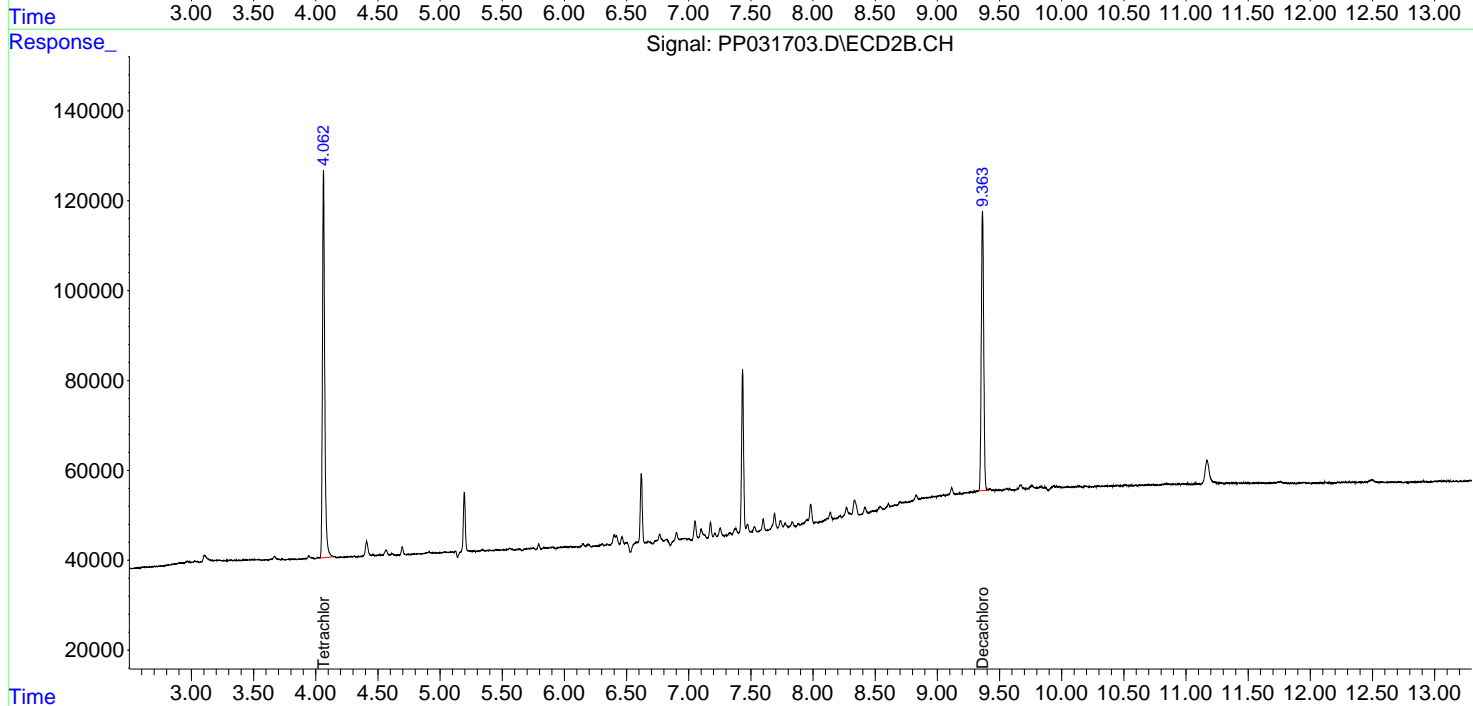
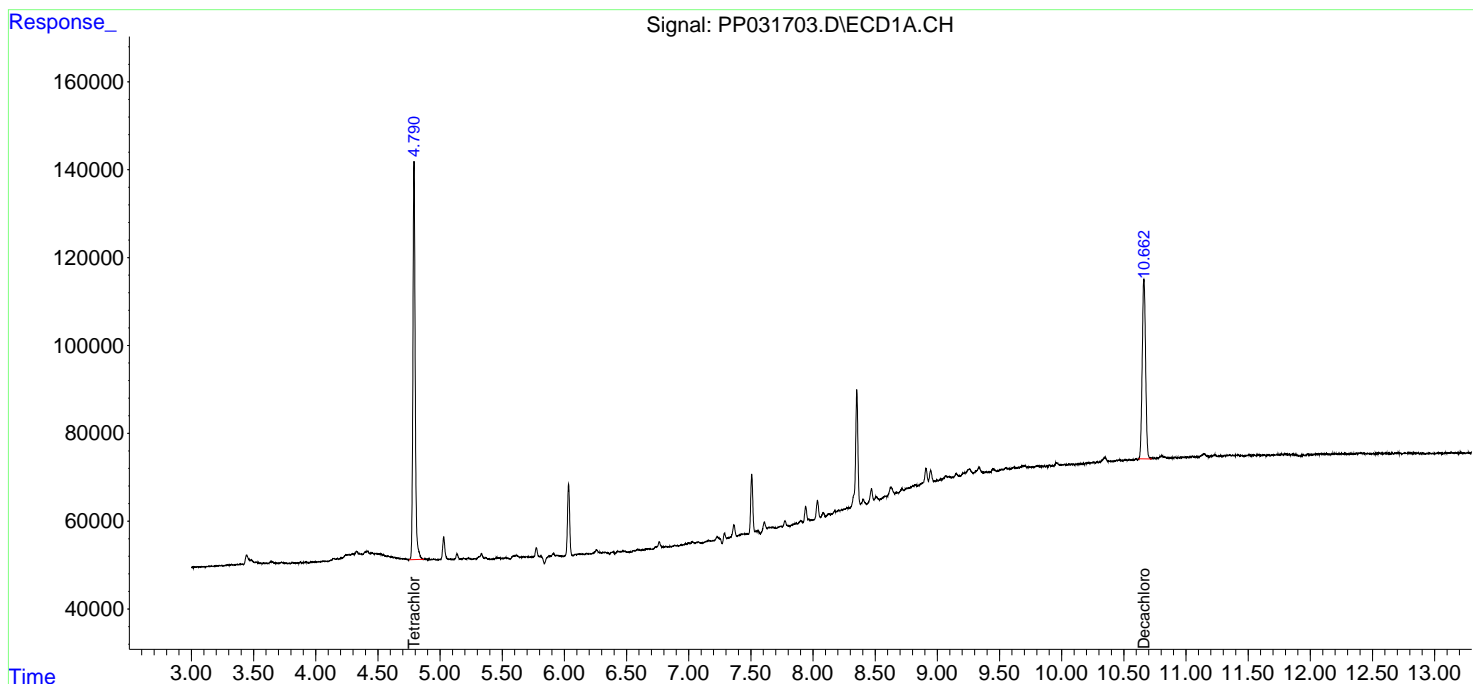
(f)=RT Delta > 1/2 Window (#)=Amounts differ by > 25% (m)=manual int.

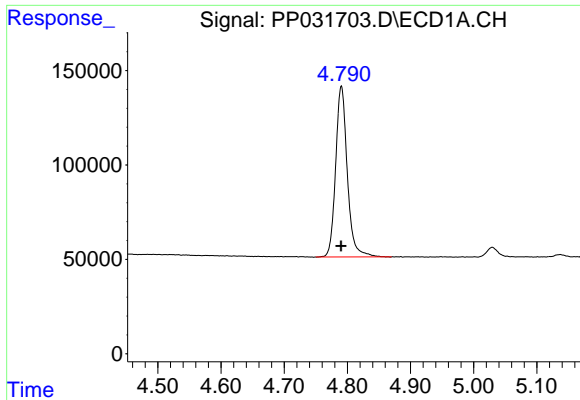
Data Path : Z:\pestpcbsrv\HPCHEM1\ECD_P\Data\PP112520\
 Data File : PP031703.D
 Signal(s) : Signal #1: ECD1A.CH Signal #2: ECD2B.CH
 Acq On : 25 Nov 2020 20:18
 Operator : DD\AJ
 Sample : L4891-03
 Misc :
 ALS Vial : 26 Sample Multiplier: 1

Instrument :
 ECD_P
 ClientSampleId :
 PAV-B3-112420-0-10

Integration File signal 1: autoint1.e
 Integration File signal 2: autoint2.e
 Quant Time: Nov 27 00:51:08 2020
 Quant Method : Z:\pestpcbsrv\HPCHEM1\ECD_P\methods\PP112220.M
 Quant Title : GC EXTRACTABLES
 QLast Update : Tue Nov 24 12:23:58 2020
 Response via : Initial Calibration
 Integrator: ChemStation 6890 Scale Mode: Small noise peaks clipped

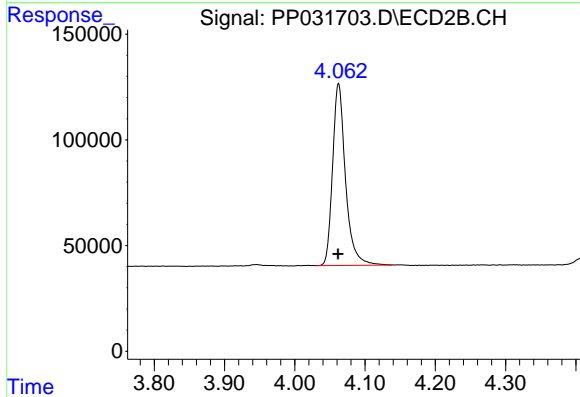
Volume Inj. : 2 µl
 Signal #1 Phase : ZB-MR1 Signal #2 Phase: ZB-MR2
 Signal #1 Info : 30Mx0.32mmx 0.50µ Signal #2 Info : 30M x 0.32mm x 0.25µm



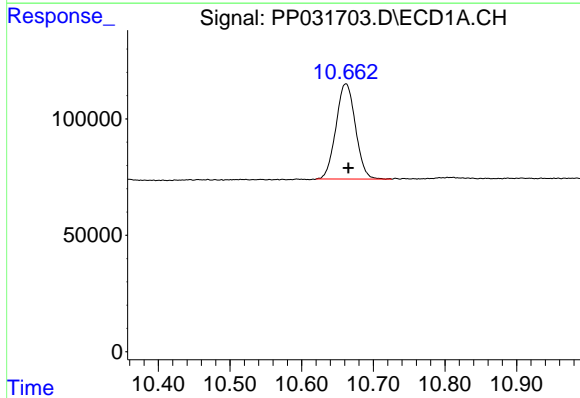


#1 Tetrachloro-m-xylene
 R.T.: 4.791 min
 Delta R.T.: 0.000 min
 Response: 1161424
 Conc: 23.98 ng/ml

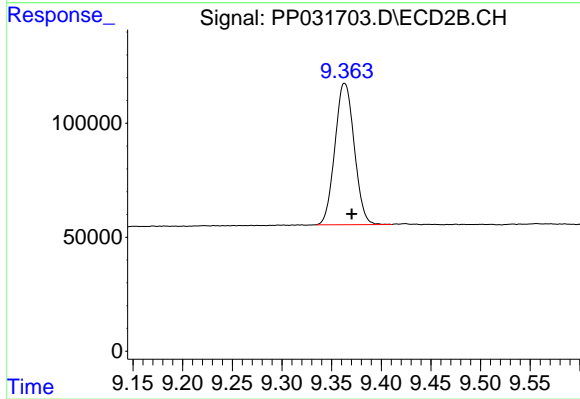
Instrument :
 ECD_P
 ClientSampleId :
 PAV-B3-112420-0-10



#1 Tetrachloro-m-xylene
 R.T.: 4.062 min
 Delta R.T.: 0.000 min
 Response: 1100441
 Conc: 22.96 ng/ml



#2 Decachlorobiphenyl
 R.T.: 10.662 min
 Delta R.T.: -0.003 min
 Response: 773003
 Conc: 22.76 ng/ml



#2 Decachlorobiphenyl
 R.T.: 9.363 min
 Delta R.T.: -0.007 min
 Response: 840356
 Conc: 22.70 ng/ml