

Data Path : Z:\pestpcbsrv\HPCHEM1\ECD\_P\Data\PP112520\  
 Data File : PP031710.D  
 Signal(s) : Signal #1: ECD1A.CH Signal #2: ECD2B.CH  
 Acq On : 25 Nov 2020 22:15  
 Operator : DD\AJ  
 Sample : I.BLK  
 Misc :  
 ALS Vial : 2 Sample Multiplier: 1

Instrument :  
 ECD\_P  
 ClientSampleId :  
 I.BLK

Integration File signal 1: autoint1.e  
 Integration File signal 2: autoint2.e  
 Quant Time: Nov 27 00:55:23 2020  
 Quant Method : Z:\pestpcbsrv\HPCHEM1\ECD\_P\methods\PP112220.M  
 Quant Title : GC EXTRACTABLES  
 QLast Update : Tue Nov 24 12:23:58 2020  
 Response via : Initial Calibration  
 Integrator: ChemStation 6890 Scale Mode: Small noise peaks clipped

Volume Inj. : 2 µl  
 Signal #1 Phase : ZB-MR1 Signal #2 Phase: ZB-MR2  
 Signal #1 Info : 30Mx0.32mmx 0.50µ Signal #2 Info : 30M x 0.32mm x 0.25µm

Compound	RT#1	RT#2	Resp#1	Resp#2	ng/ml	ng/ml
-----						
System Monitoring Compounds						
1) SA Tetrachlo...	4.790	4.062	1087817	1034025	22.465	21.579
2) SA Decachlor...	10.662	9.363	742871	811218	21.872	21.909

Target Compounds

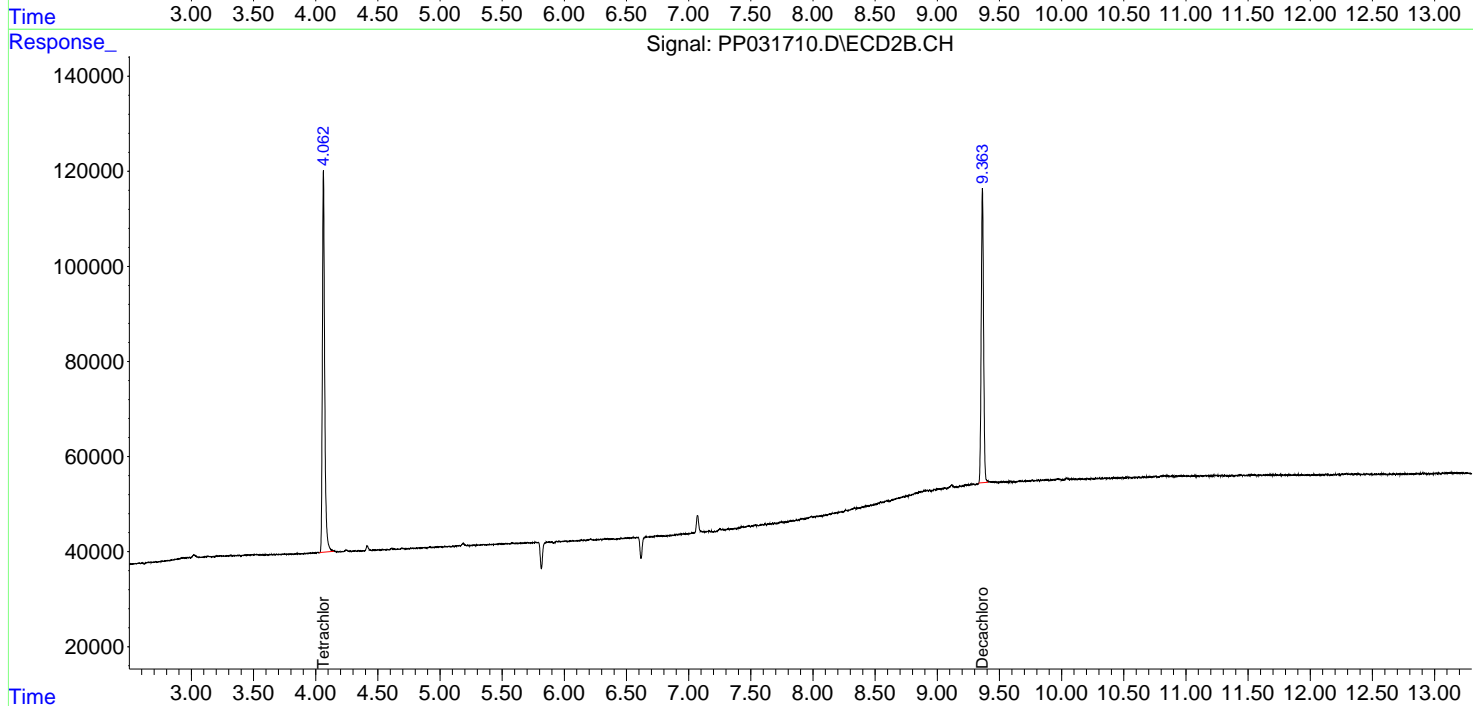
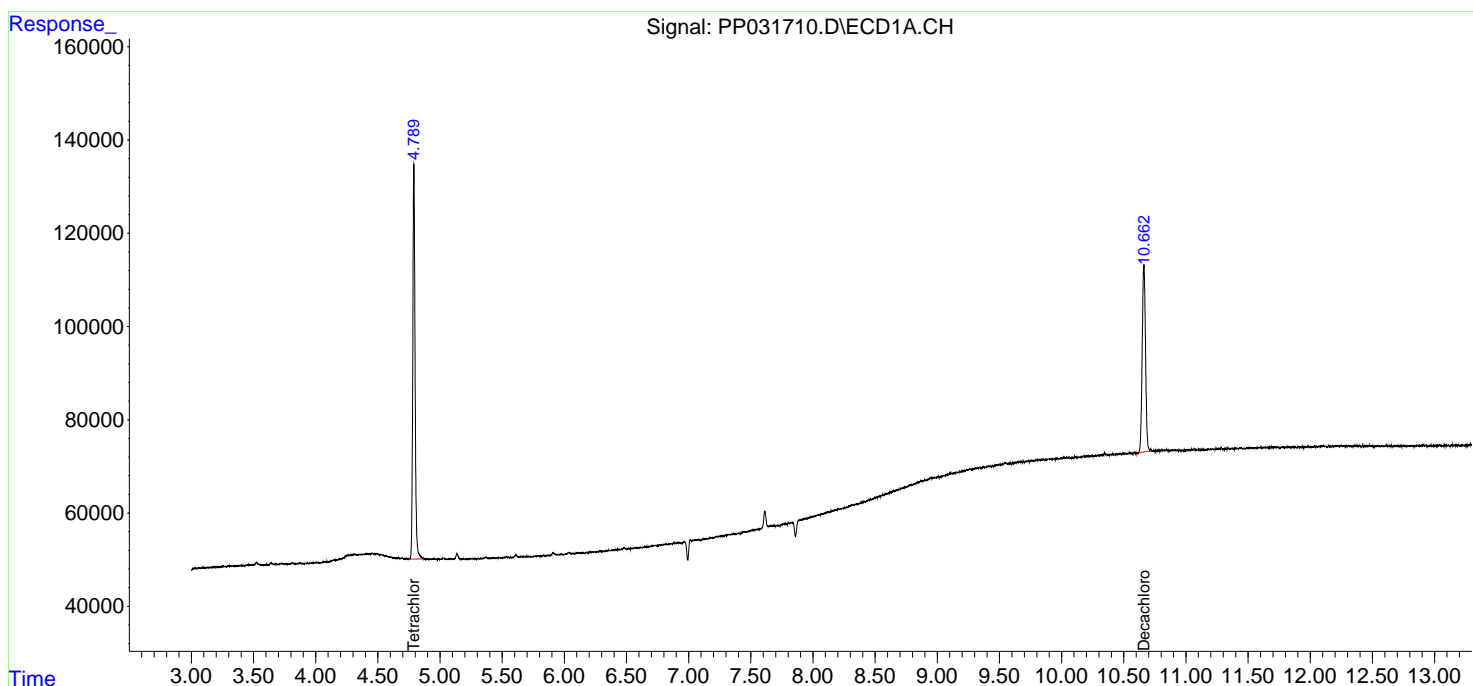
(f)=RT Delta > 1/2 Window (#)=Amounts differ by > 25% (m)=manual int.

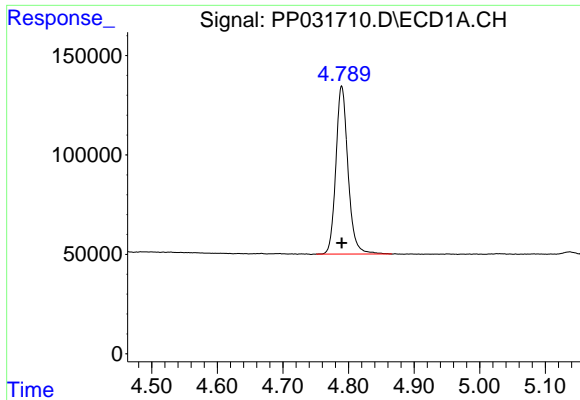
Data Path : Z:\pestpcbsrv\HPCHEM1\ECD\_P\Data\PP112520\  
 Data File : PP031710.D  
 Signal(s) : Signal #1: ECD1A.CH Signal #2: ECD2B.CH  
 Acq On : 25 Nov 2020 22:15  
 Operator : DD\AJ  
 Sample : I.BLK  
 Misc :  
 ALS Vial : 2 Sample Multiplier: 1

Instrument :  
 ECD\_P  
 ClientSampleId :  
 I.BLK

Integration File signal 1: autoint1.e  
 Integration File signal 2: autoint2.e  
 Quant Time: Nov 27 00:55:23 2020  
 Quant Method : Z:\pestpcbsrv\HPCHEM1\ECD\_P\methods\PP112220.M  
 Quant Title : GC EXTRACTABLES  
 QLast Update : Tue Nov 24 12:23:58 2020  
 Response via : Initial Calibration  
 Integrator: ChemStation 6890 Scale Mode: Small noise peaks clipped

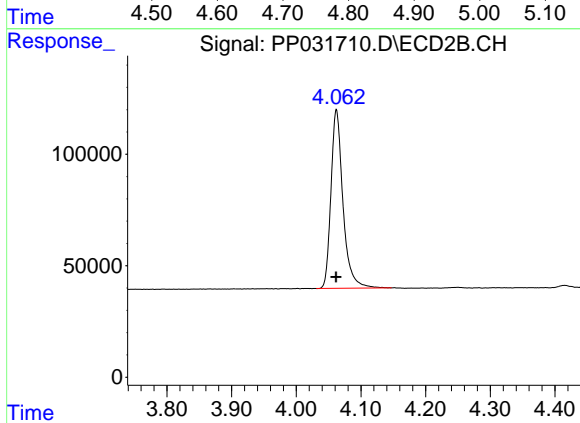
Volume Inj. : 2 µl  
 Signal #1 Phase : ZB-MR1 Signal #2 Phase: ZB-MR2  
 Signal #1 Info : 30Mx0.32mmx 0.50µ Signal #2 Info : 30M x 0.32mm x 0.25µm



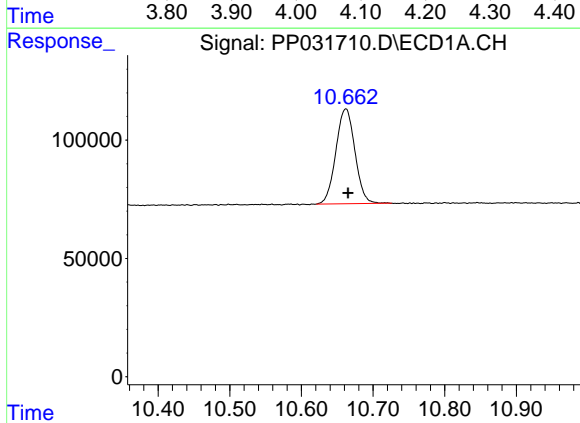


#1 Tetrachloro-m-xylene  
 R.T.: 4.790 min  
 Delta R.T.: 0.000 min  
 Response: 1087817  
 Conc: 22.46 ng/ml

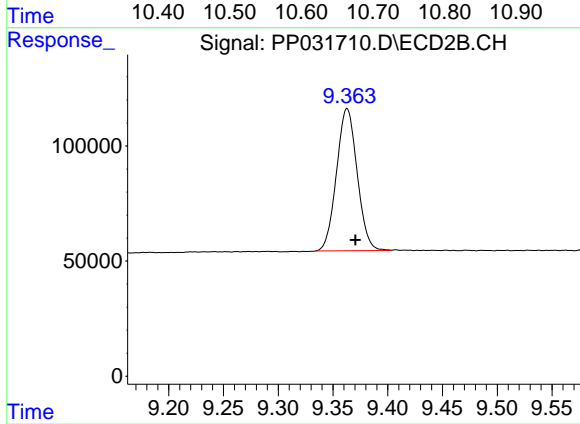
Instrument :  
 ECD\_P  
 ClientSampleId :  
 I.BLK



#1 Tetrachloro-m-xylene  
 R.T.: 4.062 min  
 Delta R.T.: 0.000 min  
 Response: 1034025  
 Conc: 21.58 ng/ml



#2 Decachlorobiphenyl  
 R.T.: 10.662 min  
 Delta R.T.: -0.003 min  
 Response: 742871  
 Conc: 21.87 ng/ml



#2 Decachlorobiphenyl  
 R.T.: 9.363 min  
 Delta R.T.: -0.007 min  
 Response: 811218  
 Conc: 21.91 ng/ml