

Data Path : Z:\pestpcbsrv\HPCHEM1\ECD_P\Data\PP112524\
 Data File : PP068724.D
 Signal(s) : Signal #1: ECD1A.ch Signal #2: ECD2B.ch
 Acq On : 26 Nov 2024 05:55
 Operator : YP\AJ
 Sample : P4998-02 10X
 Misc :
 ALS Vial : 37 Sample Multiplier: 1

Instrument :
 ECD_P
 ClientSampleId :
 FCA546C-1-2

Integration File signal 1: autoint1.e
 Integration File signal 2: autoint2.e
 Quant Time: Nov 26 10:18:00 2024
 Quant Method : Z:\pestpcbsrv\HPCHEM1\ECD_P\methods\PP110724.M
 Quant Title : GC EXTRACTABLES
 QLast Update : Fri Nov 08 11:04:08 2024
 Response via : Initial Calibration
 Integrator: ChemStation

Volume Inj. : 2 µl
 Signal #1 Phase : ZB-MR1 Signal #2 Phase: ZB-MR2
 Signal #1 Info : 30Mx0.32mmx 0.50µ Signal #2 Info : 30M x 0.32mm x 0.25µm

Compound	RT#1	RT#2	Resp#1	Resp#2	ng/ml	ng/ml

System Monitoring Compounds						
1) SA Tetrachlo...	4.759	4.049	2245087	1358608	2.313	1.403 #
2) SA Decachlor...	10.678	9.204	2282631	1790668	1.824	1.583
Target Compounds						
3) L1 AR-1016-1	5.933	5.161	1081193	2387198	30.087	72.236 #
4) L1 AR-1016-2	5.933	5.161	1081193	2387198	20.419	51.071 #
5) L1 AR-1016-3	6.014	5.370	1630753	731571	49.255	27.055 #
6) L1 AR-1016-4	6.158f	5.396	1033543	1314345	39.325	55.704 #
7) L1 AR-1016-5	6.434f	5.628	267057	1112703	9.467	37.538 #
8) L2 AR-1221-1	0.000	4.294	0	514210	N.D.	40.777 #
9) L2 AR-1221-2	5.086f	4.352	612470	810408	60.727	82.924 #
10) L2 AR-1221-3	5.112	4.426	592827	290057	19.591	9.513 #
11) L3 AR-1232-1	5.112	4.426	592827	290057	25.422	12.290 #
12) L3 AR-1232-2	5.670	5.161	502690	2387198	33.614	109.579 #
13) L3 AR-1232-3	5.933	5.370	1081193	731571	43.154	65.257 #
14) L3 AR-1232-4	6.158f	5.455	1033543	1221215	83.497	111.460 #
15) L3 AR-1232-5	6.213	5.628	2191999	1112703	220.417	90.316 #
16) L4 AR-1242-1	5.933	5.161	1081193	2387198	36.192	85.902 #
17) L4 AR-1242-2	5.933	5.161	1081193	2387198	24.516	61.804 #
18) L4 AR-1242-3	6.014	5.370	1630753	731571	58.537	34.378 #
19) L4 AR-1242-4	6.158f	5.455	1033543	1221215	47.237	53.577
20) L4 AR-1242-5	6.837	5.947	1499906	3492634	61.774	127.230 #
21) L5 AR-1248-1	5.933	5.161	1081193	2387198	47.916	109.267 #
22) L5 AR-1248-2	6.213	5.396	2191999	1314345	65.217	41.113 #
23) L5 AR-1248-3	6.434f	5.455	267057	1221215	7.313	36.445 #
24) L5 AR-1248-4	6.801	5.628	1032349	1112703	24.128	28.657
25) L5 AR-1248-5	6.837	6.011	1499906	4182701	36.108	112.838 #
26) L6 AR-1254-1	6.801	5.947	1032349	3492634	19.896	57.594 #
27) L6 AR-1254-2	6.980	6.085	3439754	3308797	50.409	62.743
28) L6 AR-1254-3	0.000	6.508	0	1034706	N.D.	12.427 #
29) L6 AR-1254-4	7.644	6.754	2709296	792705	50.345	16.302 #
30) L6 AR-1254-5	8.069	7.171	440720	139106	7.033	1.864 #
31) L7 AR-1260-1	7.548	6.656	2115283	473654	39.096	8.511 #
32) L7 AR-1260-2	7.741	6.855	728615	621535	11.454	9.384
33) L7 AR-1260-3	8.140	6.996	390353	109983	7.257	1.777 #
34) L7 AR-1260-4	8.390	7.477	515245	150158	8.280	2.847 #
35) L7 AR-1260-5	8.646f	7.714	193651	109541	1.711	0.920 #
36) L8 AR-1262-1	8.390	7.171f	515245	139106	6.950	1.793 #
37) L8 AR-1262-2	8.646f	7.477	193651	150158	1.501	2.124 #
38) L8 AR-1262-3	9.090f	8.001	912942	208097	9.542	3.536 #
39) L8 AR-1262-4	9.090f	8.059	912942	253443	11.952	2.446 #
41) L9 AR-1268-1	9.090f	8.001	912942	208097	5.917	1.336 #
42) L9 AR-1268-2	9.090f	8.059	912942	253443	6.522	1.790 #

Data Path : Z:\pestpcbsrv\HPCHEM1\ECD_P\Data\PP112524\
 Data File : PP068724.D
 Signal(s) : Signal #1: ECD1A.ch Signal #2: ECD2B.ch
 Acq On : 26 Nov 2024 05:55
 Operator : YP\AJ
 Sample : P4998-02 10X
 Misc :
 ALS Vial : 37 Sample Multiplier: 1

Instrument :
 ECD_P
ClientSampleId :
 FCA546C-1-2

Integration File signal 1: autoint1.e
 Integration File signal 2: autoint2.e
 Quant Time: Nov 26 10:18:00 2024
 Quant Method : Z:\pestpcbsrv\HPCHEM1\ECD_P\methods\PP110724.M
 Quant Title : GC EXTRACTABLES
 QLast Update : Fri Nov 08 11:04:08 2024
 Response via : Initial Calibration
 Integrator: ChemStation

Volume Inj. : 2 µl
 Signal #1 Phase : ZB-MR1 Signal #2 Phase: ZB-MR2
 Signal #1 Info : 30Mx0.32mmx 0.50µ Signal #2 Info : 30M x 0.32mm x 0.25µm

	Compound	RT#1	RT#2	Resp#1	Resp#2	ng/ml	ng/ml
45)	L9 AR-1268-5	10.343f	8.917	527543	183603	1.329	0.488 #

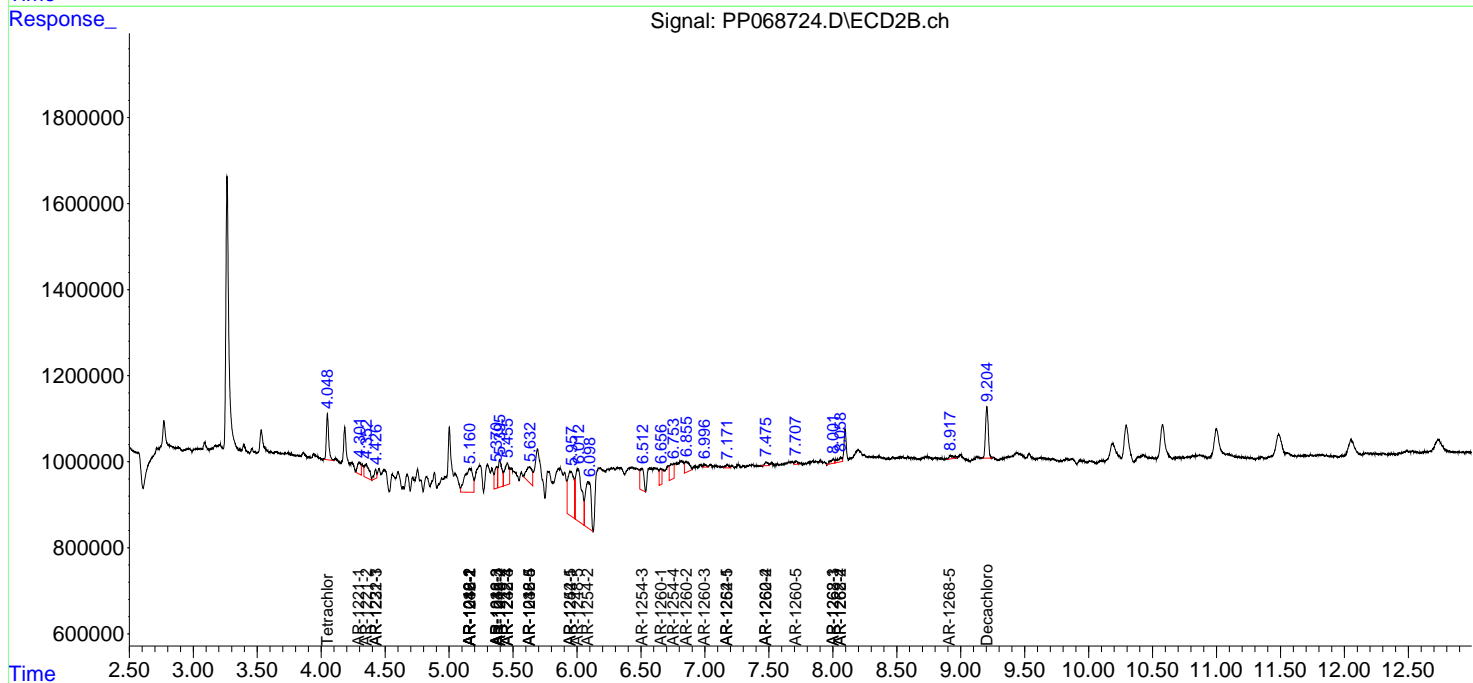
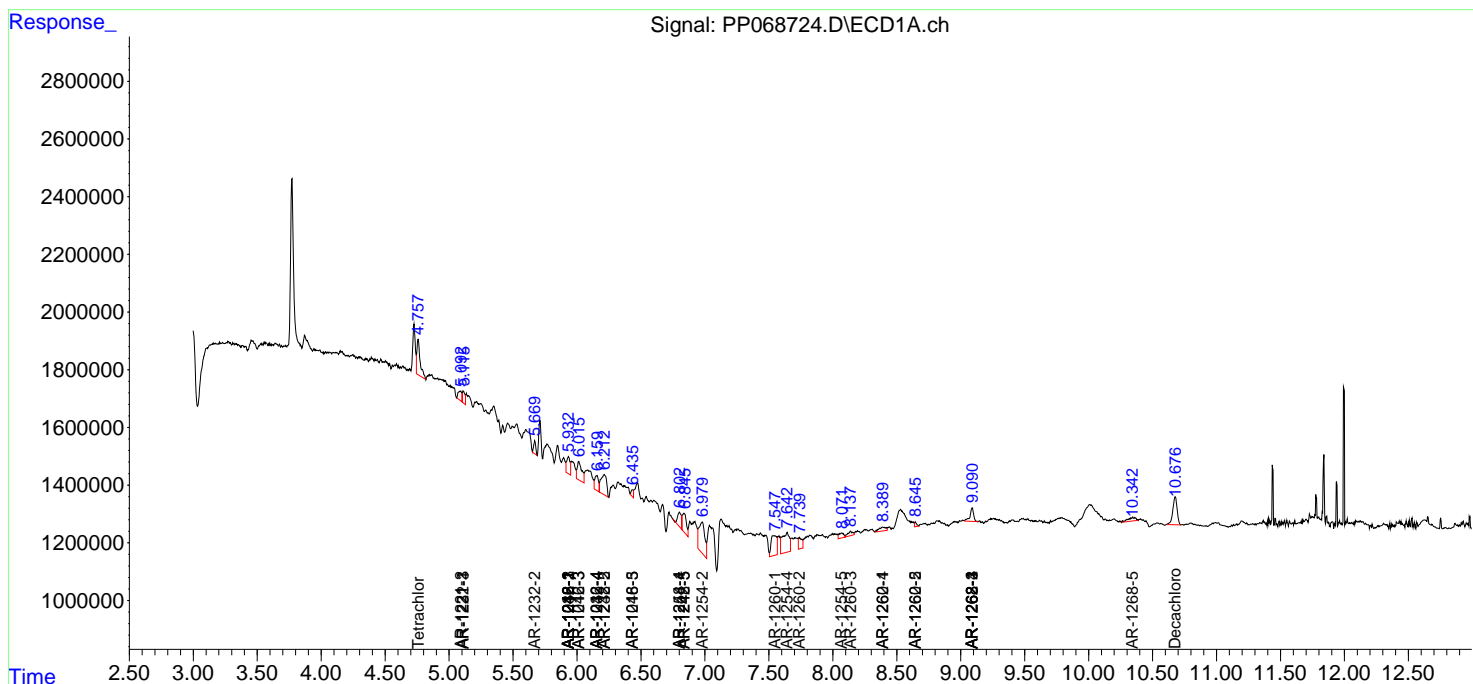
(f)=RT Delta > 1/2 Window (#)=Amounts differ by > 25% (m)=manual int.

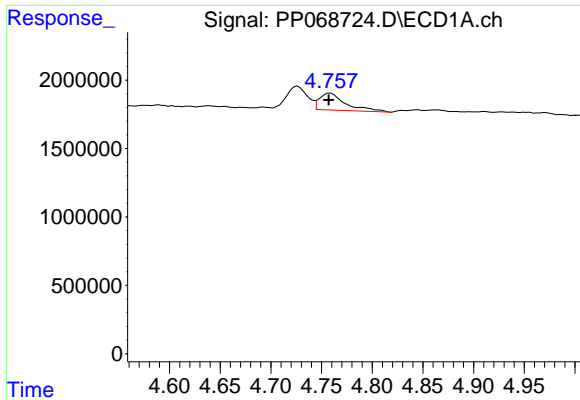
Data Path : Z:\pestpcbsrv\HPCHEM1\ECD_P\Data\PP112524\
 Data File : PP068724.D
 Signal(s) : Signal #1: ECD1A.ch Signal #2: ECD2B.ch
 Acq On : 26 Nov 2024 05:55
 Operator : YP\AJ
 Sample : P4998-02 10X
 Misc :
 ALS Vial : 37 Sample Multiplier: 1

Instrument :
 ECD_P
ClientSampleId :
 FCA546C-1-2

Integration File signal 1: autoint1.e
 Integration File signal 2: autoint2.e
 Quant Time: Nov 26 10:18:00 2024
 Quant Method : Z:\pestpcbsrv\HPCHEM1\ECD_P\methods\PP110724.M
 Quant Title : GC EXTRACTABLES
 QLast Update : Fri Nov 08 11:04:08 2024
 Response via : Initial Calibration
 Integrator: ChemStation

Volume Inj. : 2 µl
 Signal #1 Phase : ZB-MR1 Signal #2 Phase: ZB-MR2
 Signal #1 Info : 30Mx0.32mmx 0.50µ Signal #2 Info : 30M x 0.32mm x 0.25µm

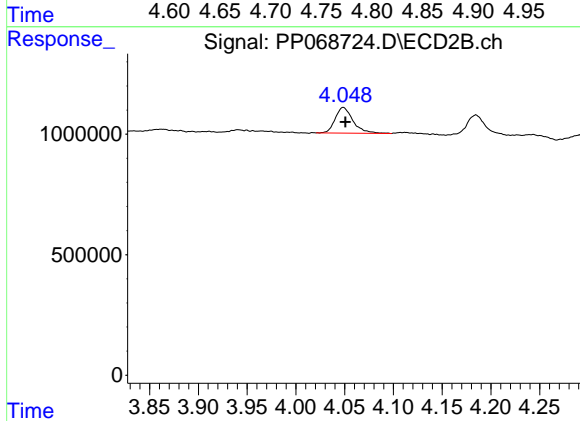




#1 Tetrachloro-m-xylene

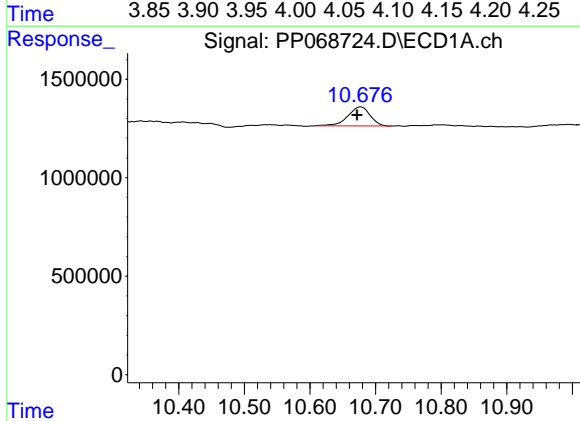
R.T.: 4.759 min
 Delta R.T.: 0.002 min
 Response: 2245087
 Conc: 2.31 ng/ml

Instrument :
 ECD_P
 ClientSampleId :
 FCA546C-1-2



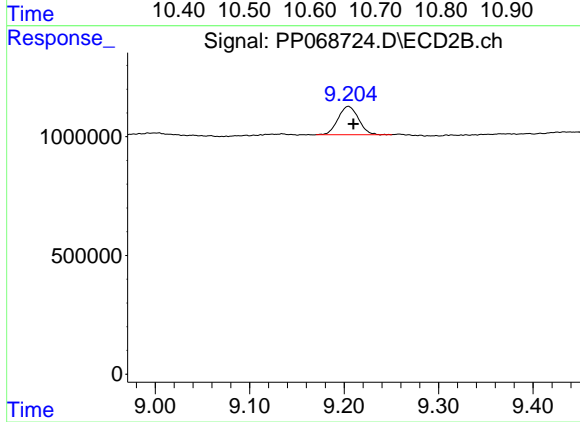
#1 Tetrachloro-m-xylene

R.T.: 4.049 min
 Delta R.T.: -0.002 min
 Response: 1358608
 Conc: 1.40 ng/ml



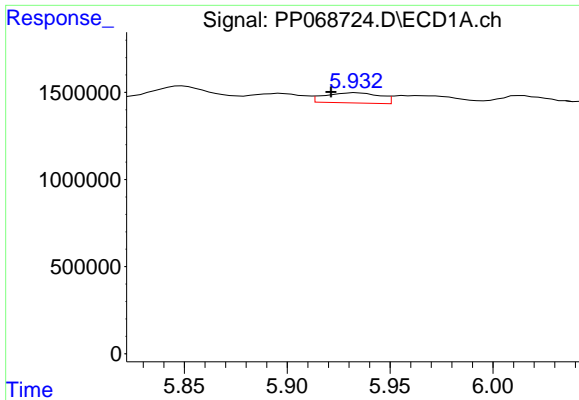
#2 Decachlorobiphenyl

R.T.: 10.678 min
 Delta R.T.: 0.006 min
 Response: 2282631
 Conc: 1.82 ng/ml



#2 Decachlorobiphenyl

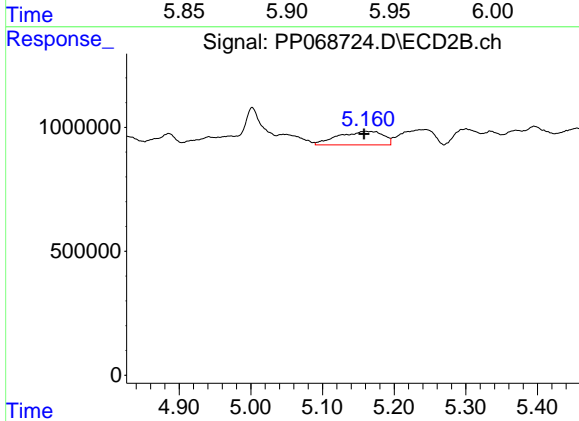
R.T.: 9.204 min
 Delta R.T.: -0.005 min
 Response: 1790668
 Conc: 1.58 ng/ml



#3 AR-1016-1

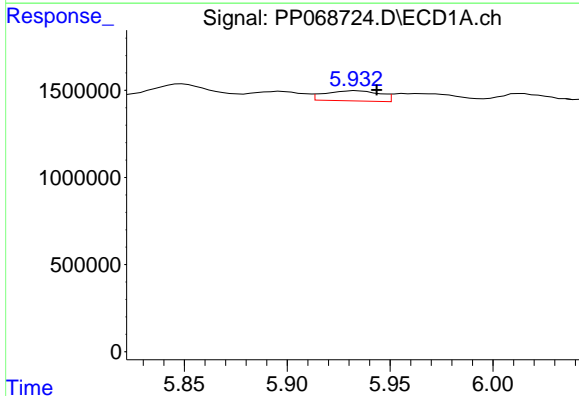
R.T.: 5.933 min
 Delta R.T.: 0.012 min
 Response: 1081193
 Conc: 30.09 ng/ml

Instrument :
 ECD_P
 ClientSampleId :
 FCA546C-1-2



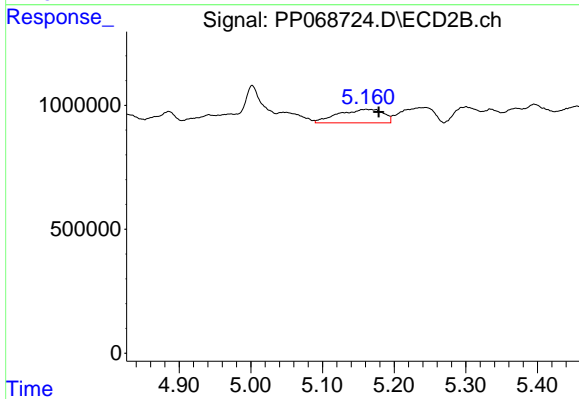
#3 AR-1016-1

R.T.: 5.161 min
 Delta R.T.: 0.003 min
 Response: 2387198
 Conc: 72.24 ng/ml



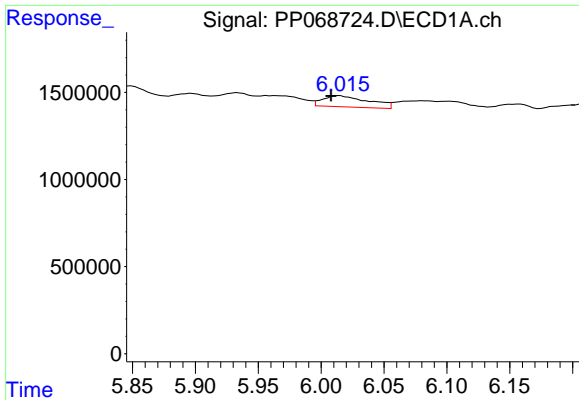
#4 AR-1016-2

R.T.: 5.933 min
 Delta R.T.: -0.010 min
 Response: 1081193
 Conc: 20.42 ng/ml



#4 AR-1016-2

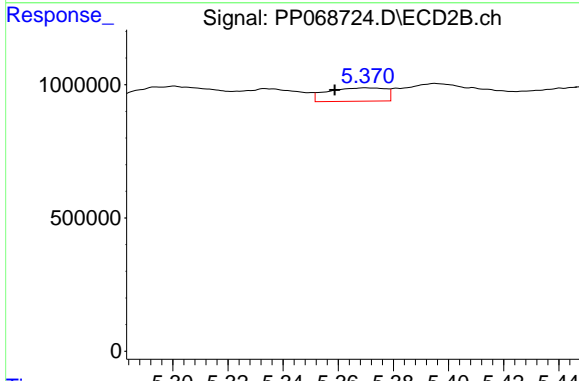
R.T.: 5.161 min
 Delta R.T.: -0.018 min
 Response: 2387198
 Conc: 51.07 ng/ml



#5 AR-1016-3

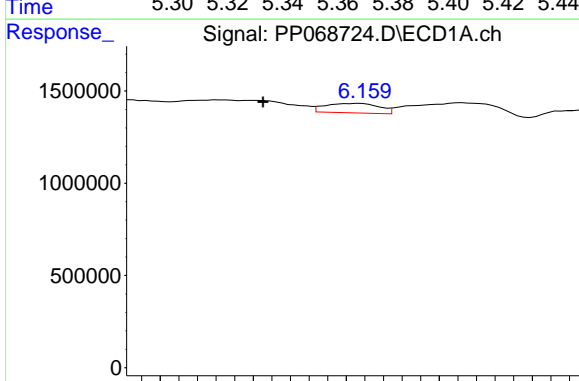
R.T.: 6.014 min
 Delta R.T.: 0.007 min
 Response: 1630753
 Conc: 49.25 ng/ml

Instrument :
 ECD_P
 ClientSampleId :
 FCA546C-1-2



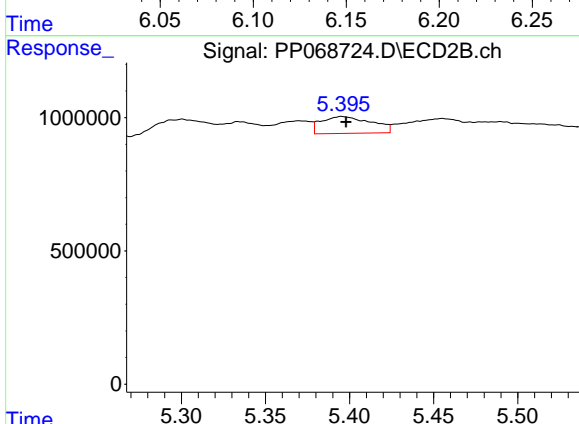
#5 AR-1016-3

R.T.: 5.370 min
 Delta R.T.: 0.011 min
 Response: 731571
 Conc: 27.05 ng/ml



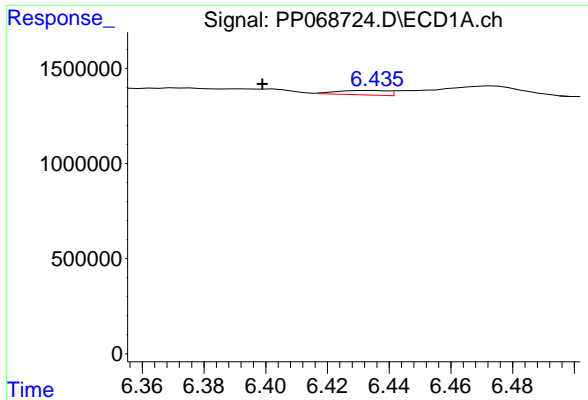
#6 AR-1016-4

R.T.: 6.158 min
 Delta R.T.: 0.052 min
 Response: 1033543
 Conc: 39.33 ng/ml



#6 AR-1016-4

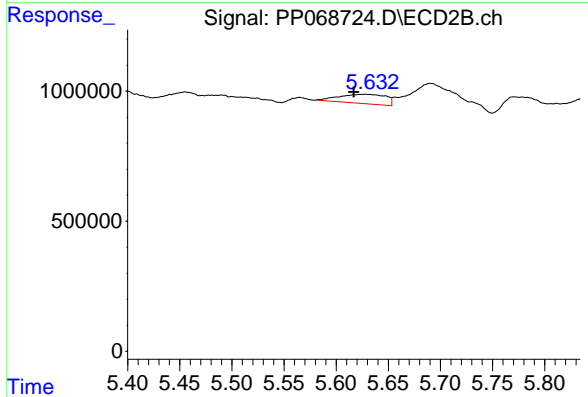
R.T.: 5.396 min
 Delta R.T.: -0.002 min
 Response: 1314345
 Conc: 55.70 ng/ml



#7 AR-1016-5

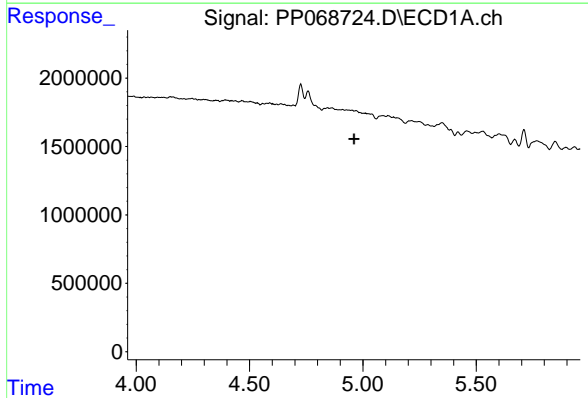
R.T.: 6.434 min
 Delta R.T.: 0.035 min
 Response: 267057
 Conc: 9.47 ng/ml

Instrument :
 ECD_P
 ClientSampleId :
 FCA546C-1-2



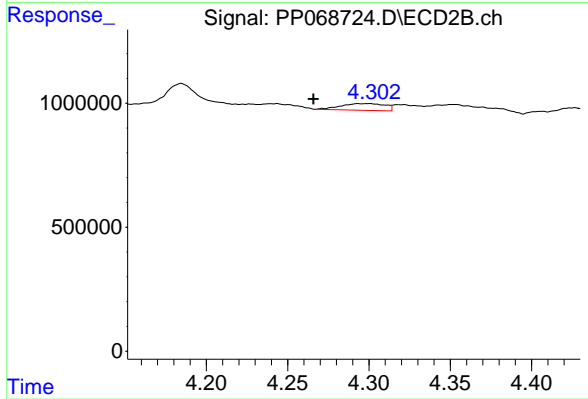
#7 AR-1016-5

R.T.: 5.628 min
 Delta R.T.: 0.011 min
 Response: 1112703
 Conc: 37.54 ng/ml



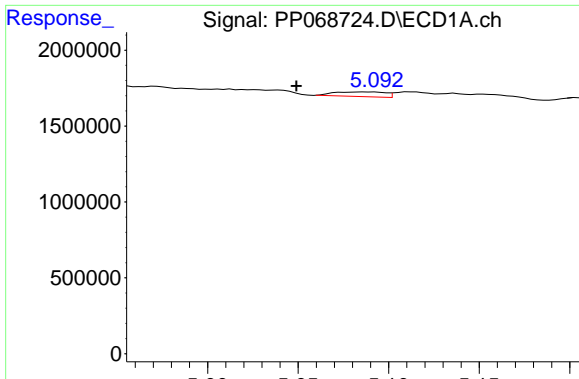
#8 AR-1221-1

R.T.: 0.000 min
 Exp R.T. : 4.962 min
 Response: 0
 Conc: N.D.



#8 AR-1221-1

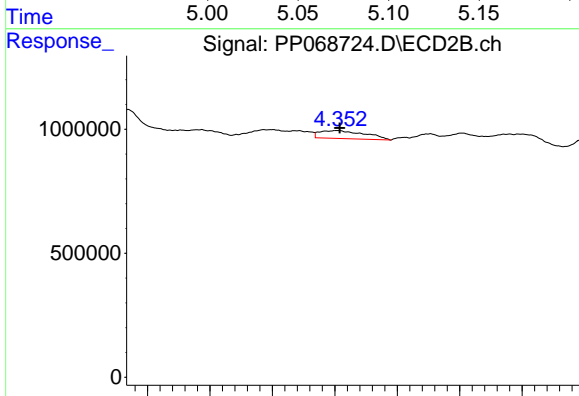
R.T.: 4.294 min
 Delta R.T.: 0.028 min
 Response: 514210
 Conc: 40.78 ng/ml



#9 AR-1221-2

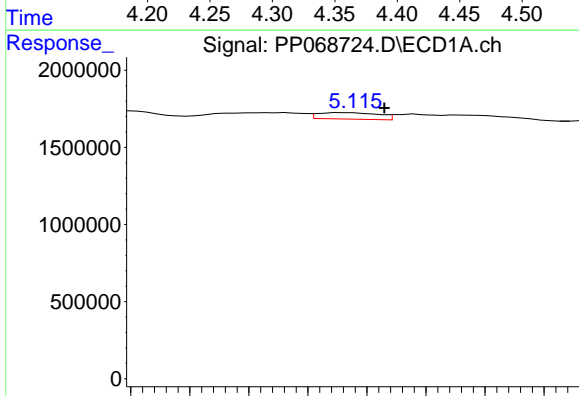
R.T.: 5.086 min
 Delta R.T.: 0.037 min
 Response: 612470
 Conc: 60.73 ng/ml

Instrument :
 ECD_P
 ClientSampleId :
 FCA546C-1-2



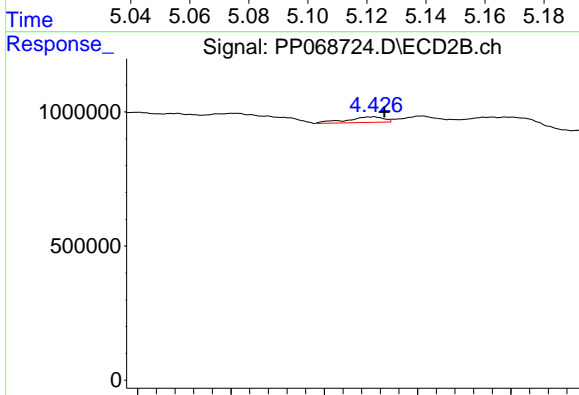
#9 AR-1221-2

R.T.: 4.352 min
 Delta R.T.: -0.002 min
 Response: 810408
 Conc: 82.92 ng/ml



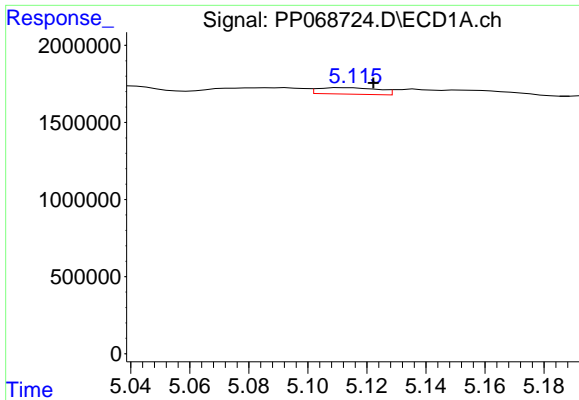
#10 AR-1221-3

R.T.: 5.112 min
 Delta R.T.: -0.014 min
 Response: 592827
 Conc: 19.59 ng/ml



#10 AR-1221-3

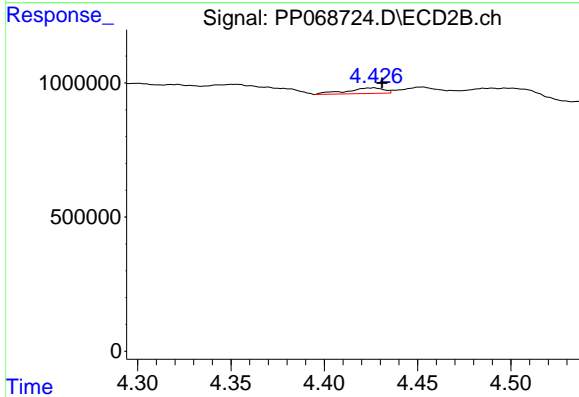
R.T.: 4.426 min
 Delta R.T.: -0.006 min
 Response: 290057
 Conc: 9.51 ng/ml



#11 AR-1232-1

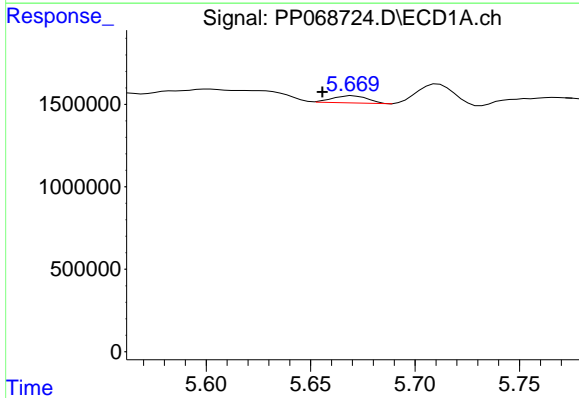
R.T.: 5.112 min
 Delta R.T.: -0.011 min
 Response: 592827
 Conc: 25.42 ng/ml

Instrument :
 ECD_P
 ClientSampleId :
 FCA546C-1-2



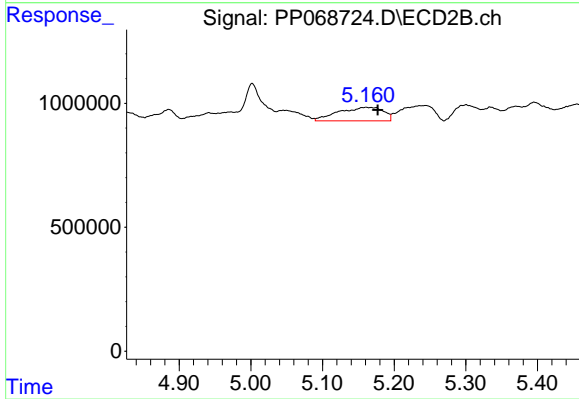
#11 AR-1232-1

R.T.: 4.426 min
 Delta R.T.: -0.005 min
 Response: 290057
 Conc: 12.29 ng/ml



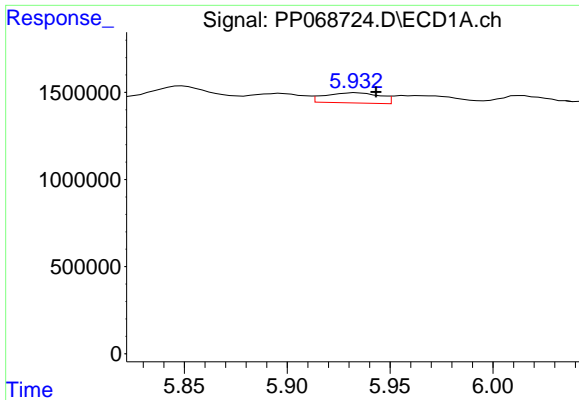
#12 AR-1232-2

R.T.: 5.670 min
 Delta R.T.: 0.015 min
 Response: 502690
 Conc: 33.61 ng/ml



#12 AR-1232-2

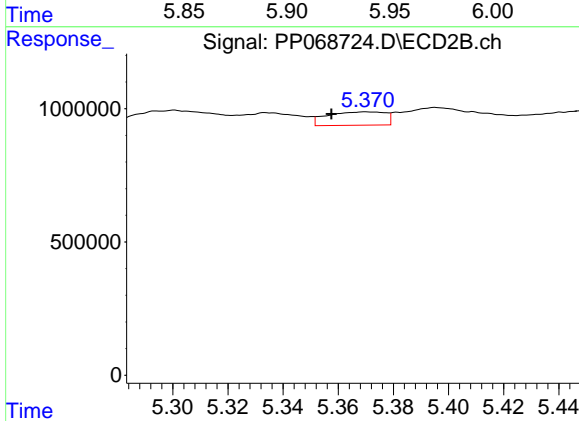
R.T.: 5.161 min
 Delta R.T.: -0.016 min
 Response: 2387198
 Conc: 109.58 ng/ml



#13 AR-1232-3

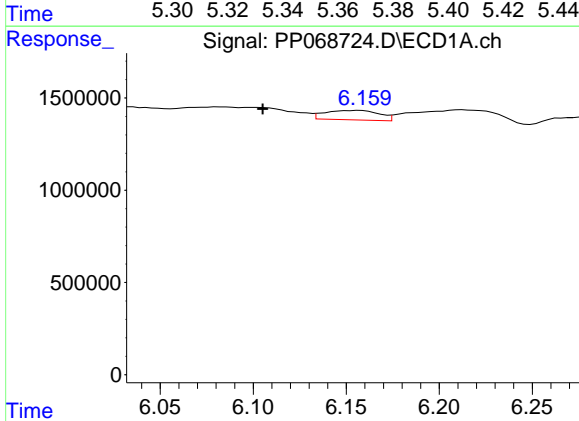
R.T.: 5.933 min
 Delta R.T.: -0.010 min
 Response: 1081193
 Conc: 43.15 ng/ml

Instrument :
 ECD_P
 ClientSampleId :
 FCA546C-1-2



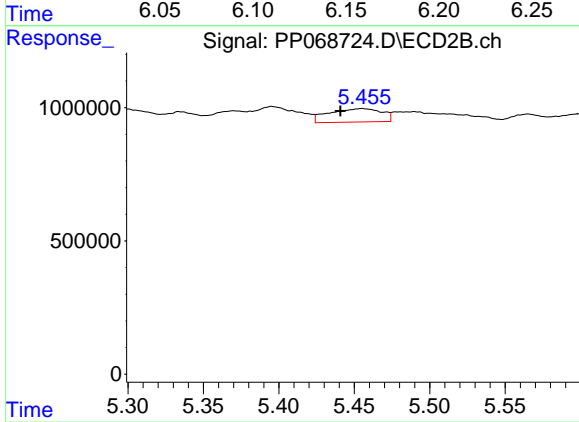
#13 AR-1232-3

R.T.: 5.370 min
 Delta R.T.: 0.013 min
 Response: 731571
 Conc: 65.26 ng/ml



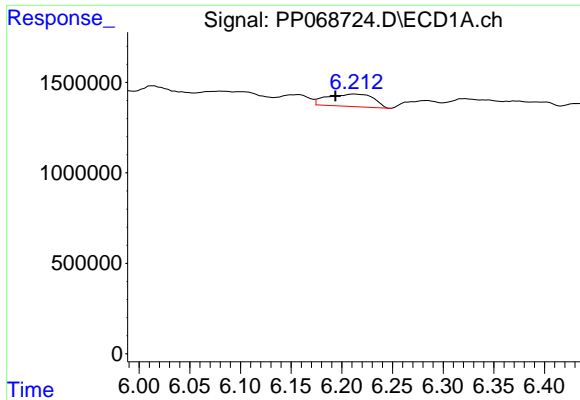
#14 AR-1232-4

R.T.: 6.158 min
 Delta R.T.: 0.052 min
 Response: 1033543
 Conc: 83.50 ng/ml



#14 AR-1232-4

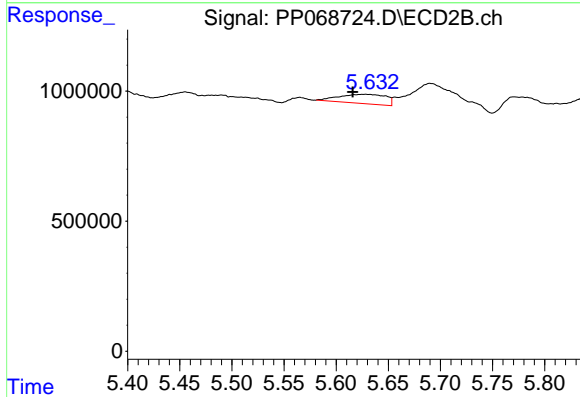
R.T.: 5.455 min
 Delta R.T.: 0.015 min
 Response: 1221215
 Conc: 111.46 ng/ml



#15 AR-1232-5

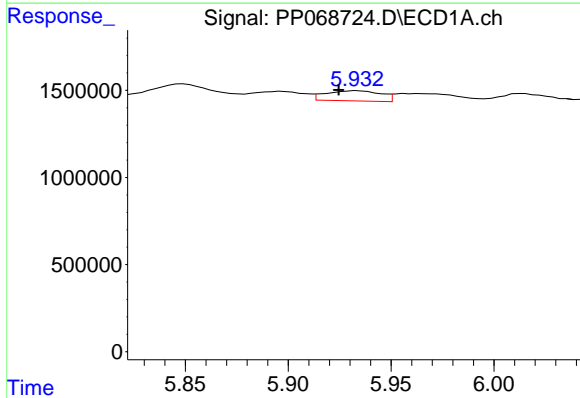
R.T.: 6.213 min
 Delta R.T.: 0.019 min
 Response: 2191999
 Conc: 220.42 ng/ml

Instrument :
 ECD_P
 ClientSampleId :
 FCA546C-1-2



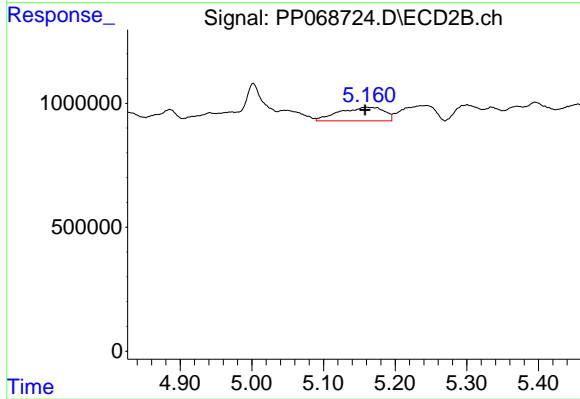
#15 AR-1232-5

R.T.: 5.628 min
 Delta R.T.: 0.013 min
 Response: 1112703
 Conc: 90.32 ng/ml



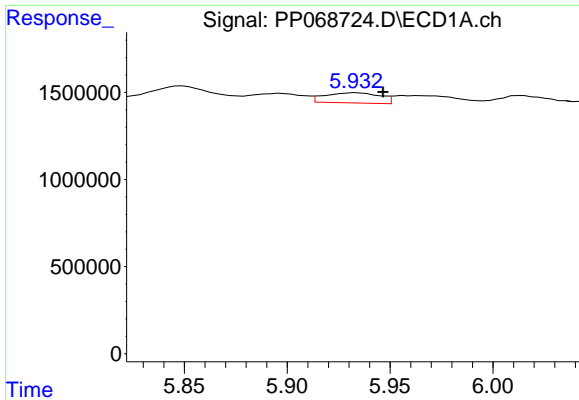
#16 AR-1242-1

R.T.: 5.933 min
 Delta R.T.: 0.009 min
 Response: 1081193
 Conc: 36.19 ng/ml



#16 AR-1242-1

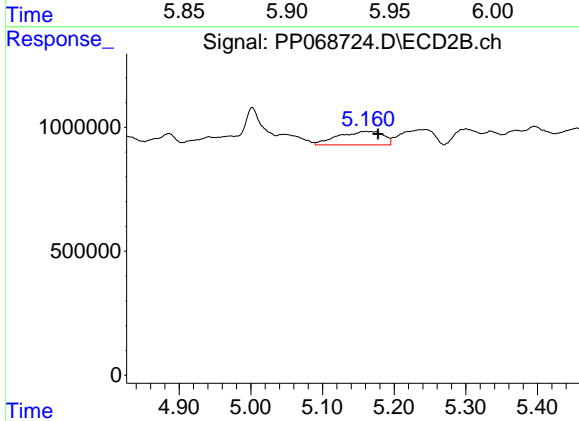
R.T.: 5.161 min
 Delta R.T.: 0.003 min
 Response: 2387198
 Conc: 85.90 ng/ml



#17 AR-1242-2

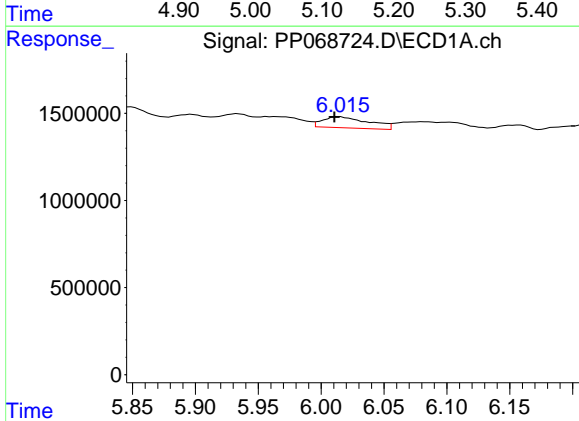
R.T.: 5.933 min
 Delta R.T.: -0.013 min
 Response: 1081193
 Conc: 24.52 ng/ml

Instrument :
 ECD_P
 ClientSampleId :
 FCA546C-1-2



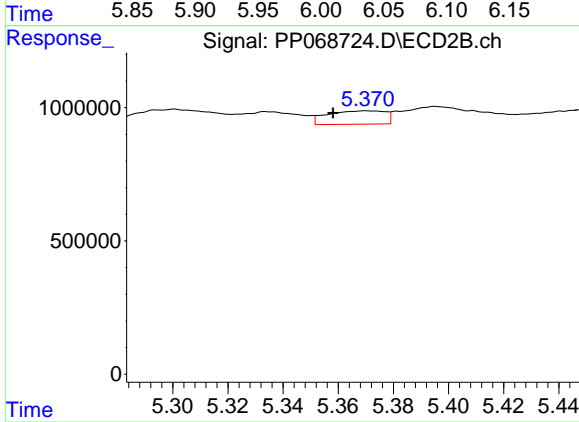
#17 AR-1242-2

R.T.: 5.161 min
 Delta R.T.: -0.016 min
 Response: 2387198
 Conc: 61.80 ng/ml



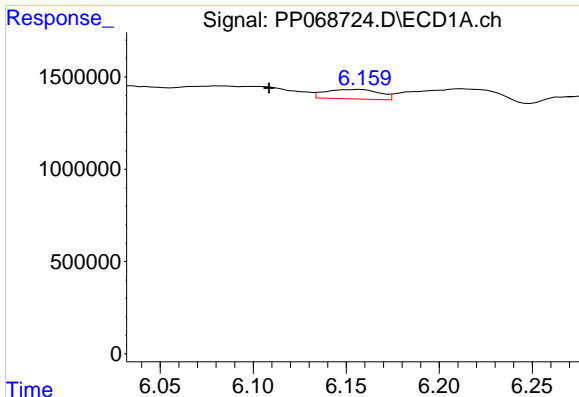
#18 AR-1242-3

R.T.: 6.014 min
 Delta R.T.: 0.004 min
 Response: 1630753
 Conc: 58.54 ng/ml



#18 AR-1242-3

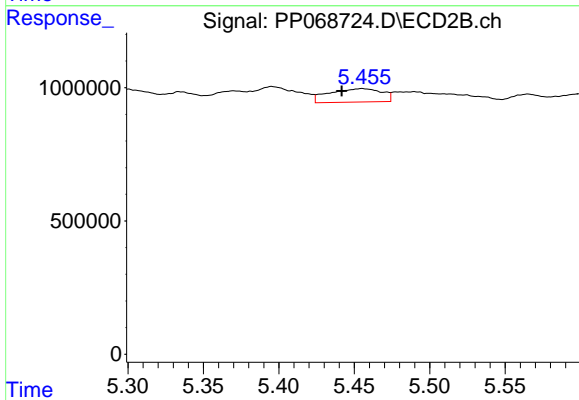
R.T.: 5.370 min
 Delta R.T.: 0.012 min
 Response: 731571
 Conc: 34.38 ng/ml



#19 AR-1242-4

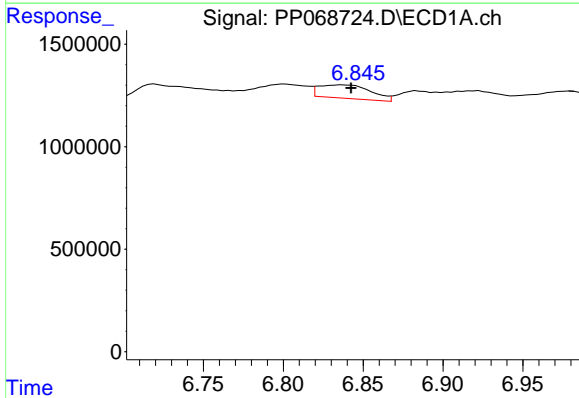
R.T.: 6.158 min
 Delta R.T.: 0.049 min
 Response: 1033543
 Conc: 47.24 ng/ml

Instrument :
 ECD_P
 ClientSampleId :
 FCA546C-1-2



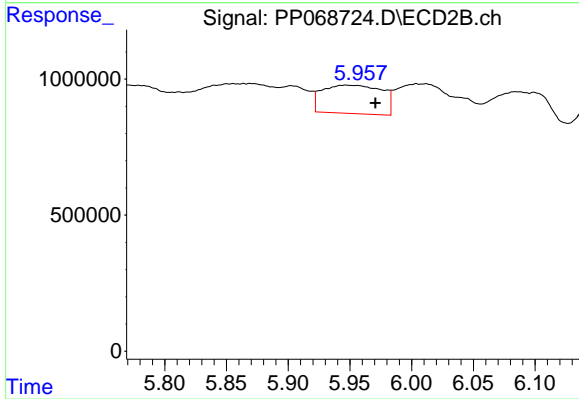
#19 AR-1242-4

R.T.: 5.455 min
 Delta R.T.: 0.014 min
 Response: 1221215
 Conc: 53.58 ng/ml



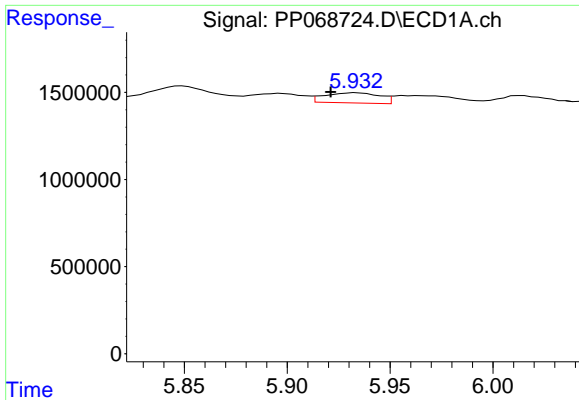
#20 AR-1242-5

R.T.: 6.837 min
 Delta R.T.: -0.005 min
 Response: 1499906
 Conc: 61.77 ng/ml



#20 AR-1242-5

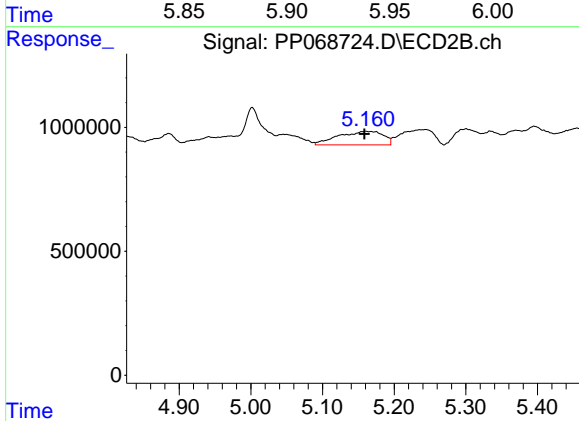
R.T.: 5.947 min
 Delta R.T.: -0.024 min
 Response: 3492634
 Conc: 127.23 ng/ml



#21 AR-1248-1

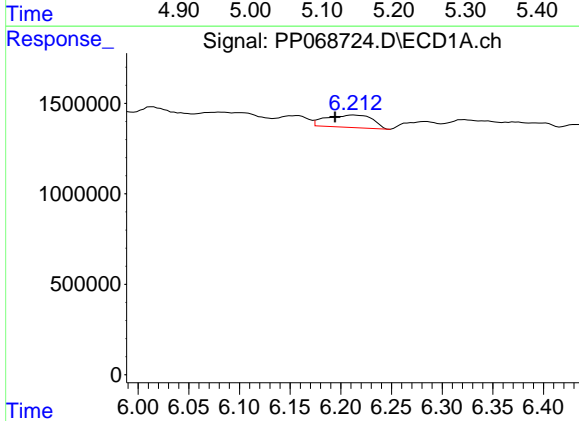
R.T.: 5.933 min
 Delta R.T.: 0.012 min
 Response: 1081193
 Conc: 47.92 ng/ml

Instrument :
 ECD_P
 ClientSampleId :
 FCA546C-1-2



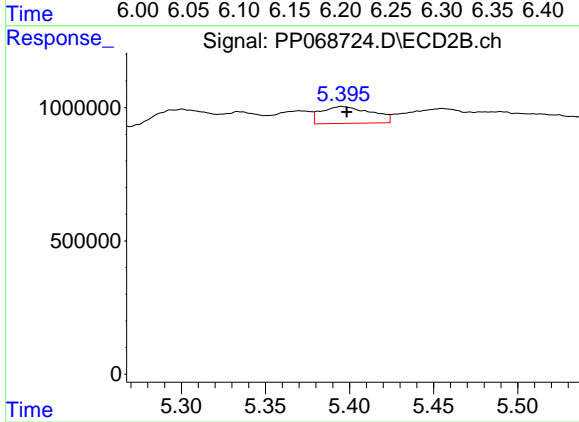
#21 AR-1248-1

R.T.: 5.161 min
 Delta R.T.: 0.003 min
 Response: 2387198
 Conc: 109.27 ng/ml



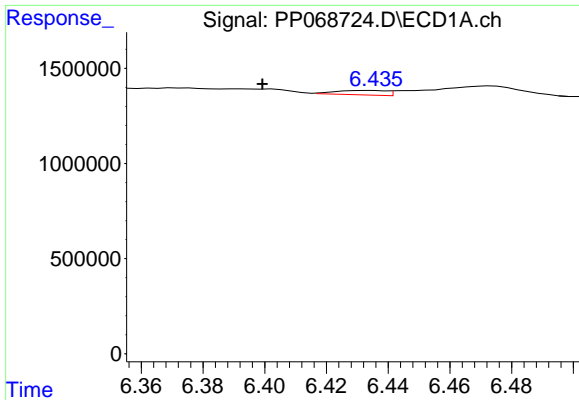
#22 AR-1248-2

R.T.: 6.213 min
 Delta R.T.: 0.018 min
 Response: 2191999
 Conc: 65.22 ng/ml



#22 AR-1248-2

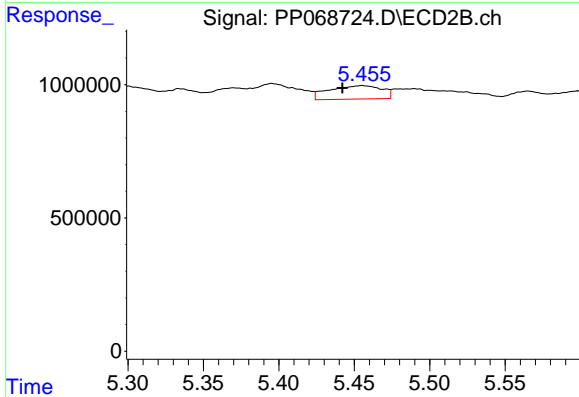
R.T.: 5.396 min
 Delta R.T.: -0.003 min
 Response: 1314345
 Conc: 41.11 ng/ml



#23 AR-1248-3

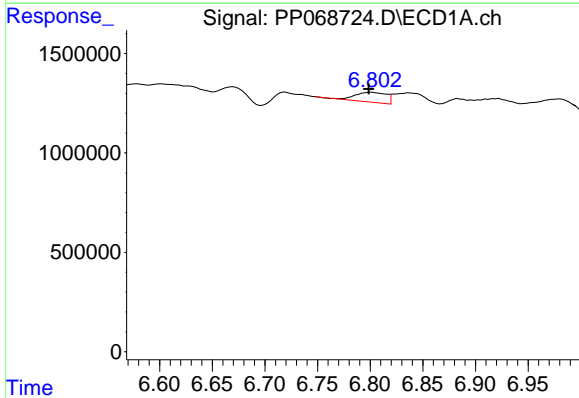
R.T.: 6.434 min
 Delta R.T.: 0.035 min
 Response: 267057
 Conc: 7.31 ng/ml

Instrument :
 ECD_P
 ClientSampleId :
 FCA546C-1-2



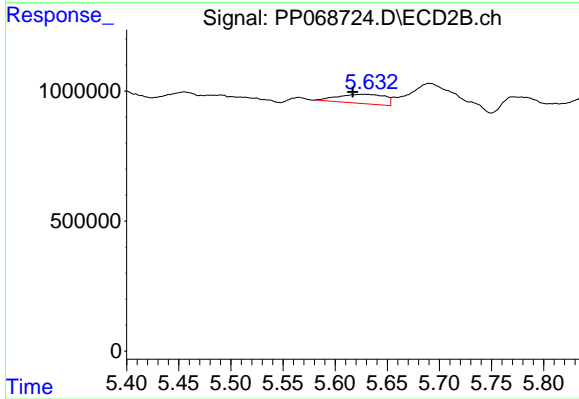
#23 AR-1248-3

R.T.: 5.455 min
 Delta R.T.: 0.013 min
 Response: 1221215
 Conc: 36.45 ng/ml



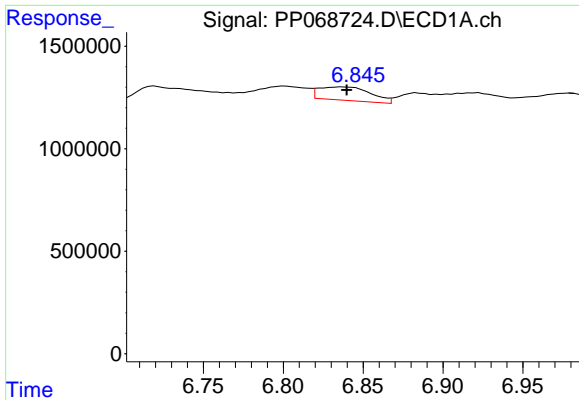
#24 AR-1248-4

R.T.: 6.801 min
 Delta R.T.: 0.002 min
 Response: 1032349
 Conc: 24.13 ng/ml



#24 AR-1248-4

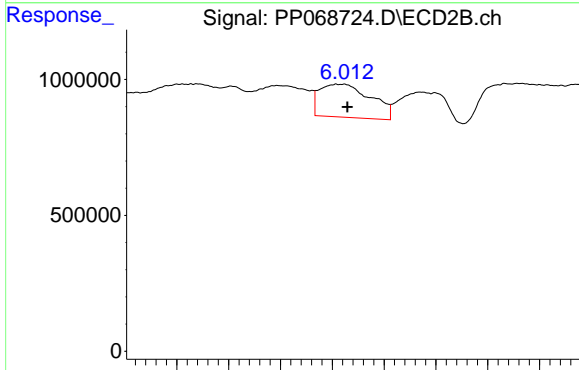
R.T.: 5.628 min
 Delta R.T.: 0.011 min
 Response: 1112703
 Conc: 28.66 ng/ml



#25 AR-1248-5

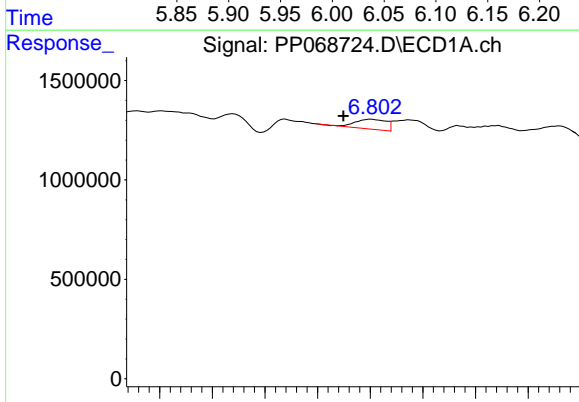
R.T.: 6.837 min
 Delta R.T.: -0.002 min
 Response: 1499906
 Conc: 36.11 ng/ml

Instrument :
 ECD_P
 ClientSampleId :
 FCA546C-1-2



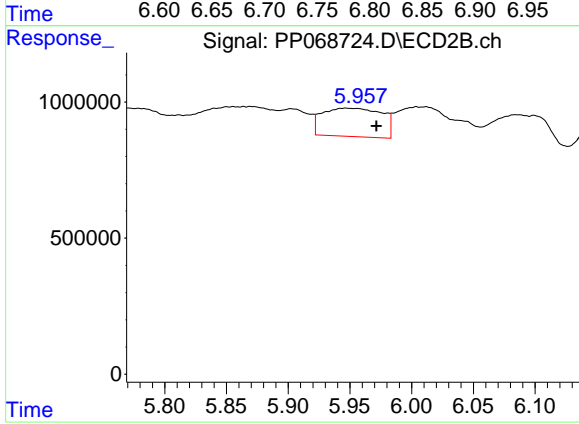
#25 AR-1248-5

R.T.: 6.011 min
 Delta R.T.: -0.003 min
 Response: 4182701
 Conc: 112.84 ng/ml



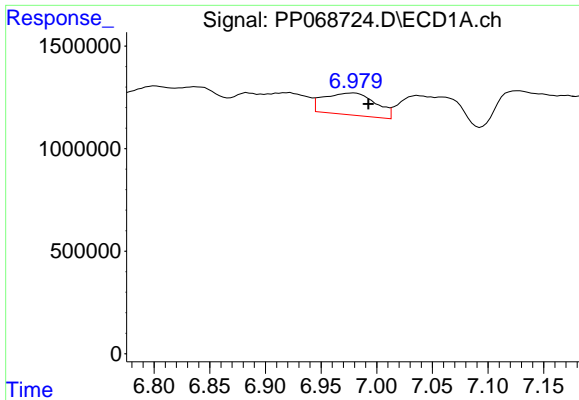
#26 AR-1254-1

R.T.: 6.801 min
 Delta R.T.: 0.027 min
 Response: 1032349
 Conc: 19.90 ng/ml



#26 AR-1254-1

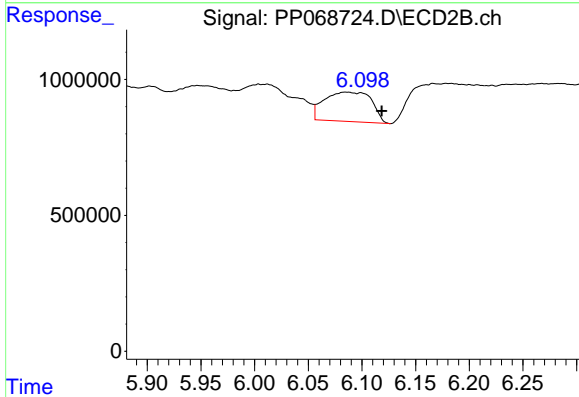
R.T.: 5.947 min
 Delta R.T.: -0.025 min
 Response: 3492634
 Conc: 57.59 ng/ml



#27 AR-1254-2

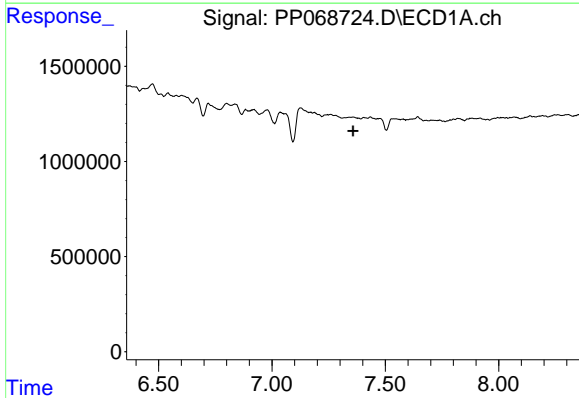
R.T.: 6.980 min
 Delta R.T.: -0.012 min
 Response: 3439754
 Conc: 50.41 ng/ml

Instrument :
 ECD_P
 ClientSampleId :
 FCA546C-1-2



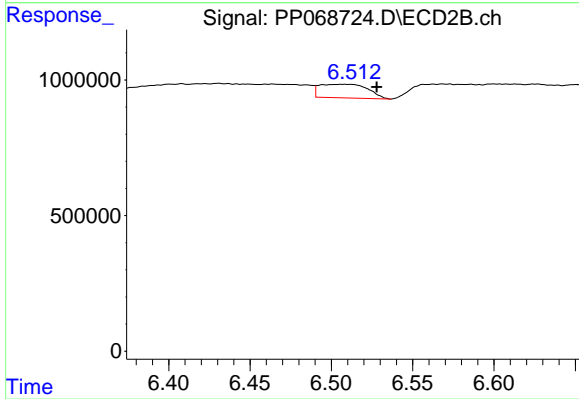
#27 AR-1254-2

R.T.: 6.085 min
 Delta R.T.: -0.034 min
 Response: 3308797
 Conc: 62.74 ng/ml



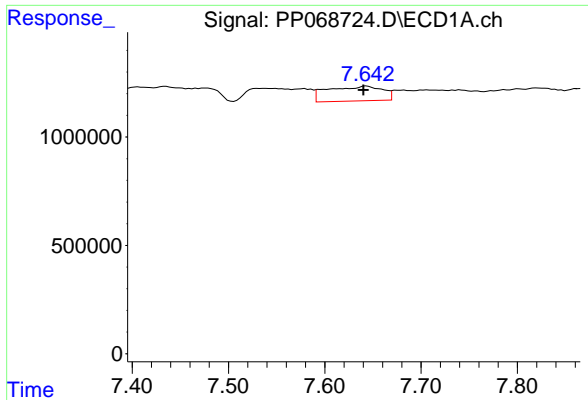
#28 AR-1254-3

R.T.: 0.000 min
 Exp R.T. : 7.358 min
 Response: 0
 Conc: N.D.



#28 AR-1254-3

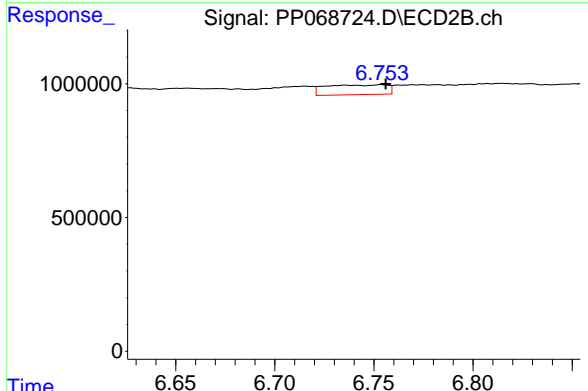
R.T.: 6.508 min
 Delta R.T.: -0.020 min
 Response: 1034706
 Conc: 12.43 ng/ml



#29 AR-1254-4

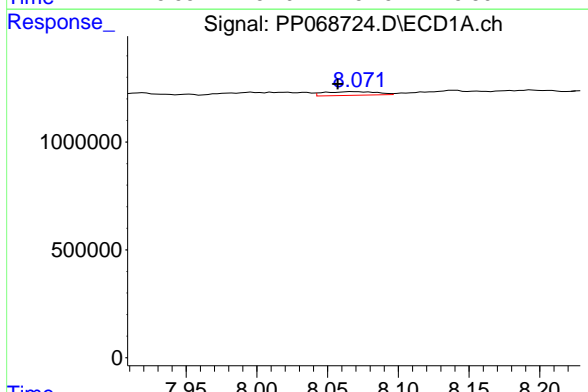
R.T.: 7.644 min
 Delta R.T.: 0.003 min
 Response: 2709296
 Conc: 50.35 ng/ml

Instrument :
 ECD_P
 ClientSampleId :
 FCA546C-1-2



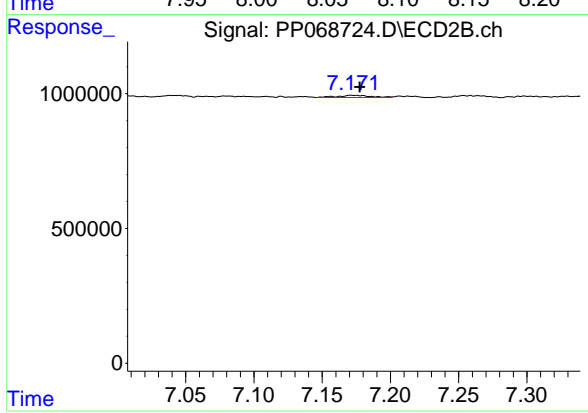
#29 AR-1254-4

R.T.: 6.754 min
 Delta R.T.: -0.002 min
 Response: 792705
 Conc: 16.30 ng/ml



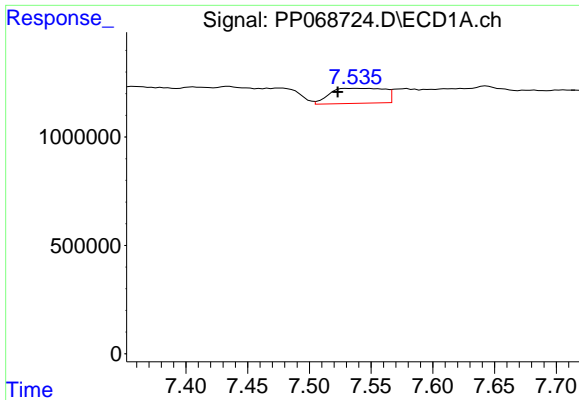
#30 AR-1254-5

R.T.: 8.069 min
 Delta R.T.: 0.012 min
 Response: 440720
 Conc: 7.03 ng/ml



#30 AR-1254-5

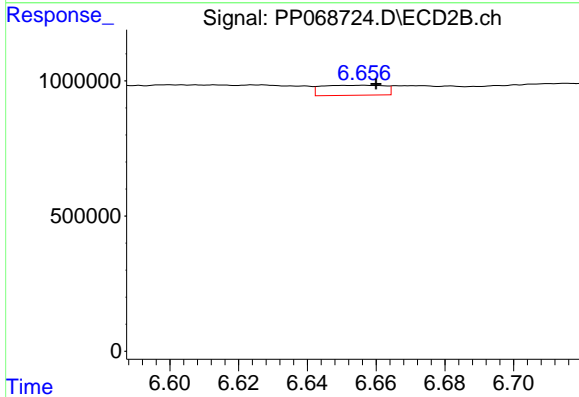
R.T.: 7.171 min
 Delta R.T.: -0.006 min
 Response: 139106
 Conc: 1.86 ng/ml



#31 AR-1260-1

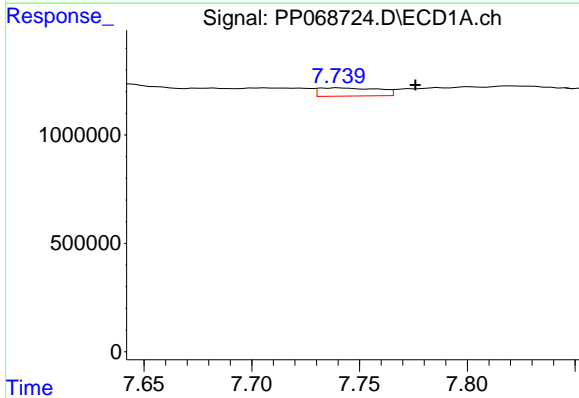
R.T.: 7.548 min
 Delta R.T.: 0.025 min
 Response: 2115283
 Conc: 39.10 ng/ml

Instrument :
 ECD_P
 ClientSampleId :
 FCA546C-1-2



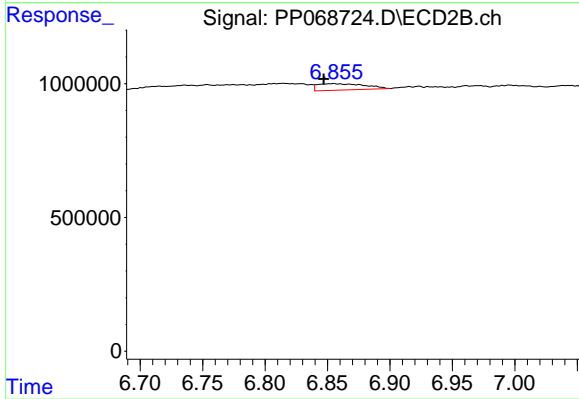
#31 AR-1260-1

R.T.: 6.656 min
 Delta R.T.: -0.004 min
 Response: 473654
 Conc: 8.51 ng/ml



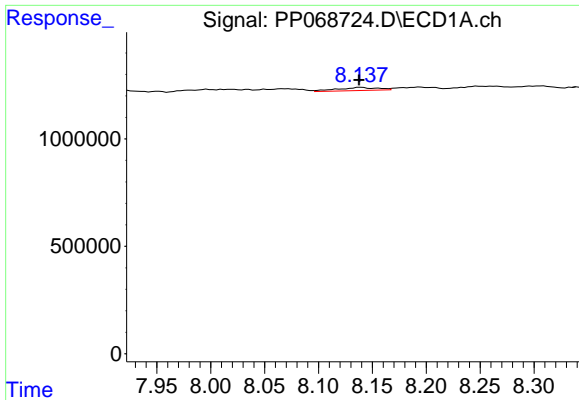
#32 AR-1260-2

R.T.: 7.741 min
 Delta R.T.: -0.035 min
 Response: 728615
 Conc: 11.45 ng/ml



#32 AR-1260-2

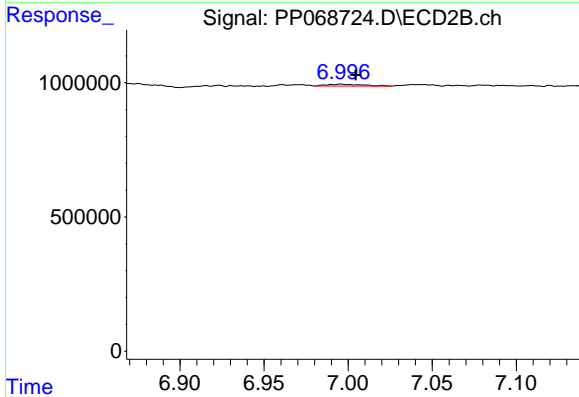
R.T.: 6.855 min
 Delta R.T.: 0.008 min
 Response: 621535
 Conc: 9.38 ng/ml



#33 AR-1260-3

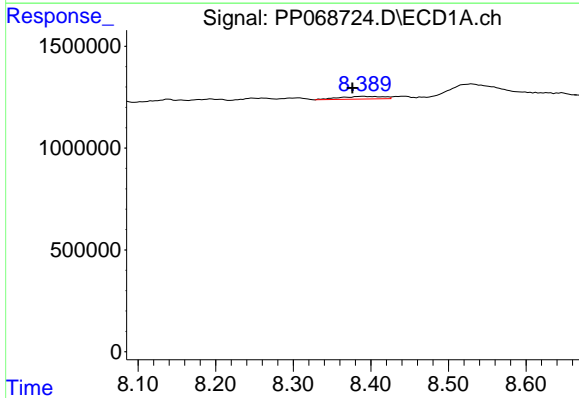
R.T.: 8.140 min
 Delta R.T.: 0.002 min
 Response: 390353
 Conc: 7.26 ng/ml

Instrument :
 ECD_P
 ClientSampleId :
 FCA546C-1-2



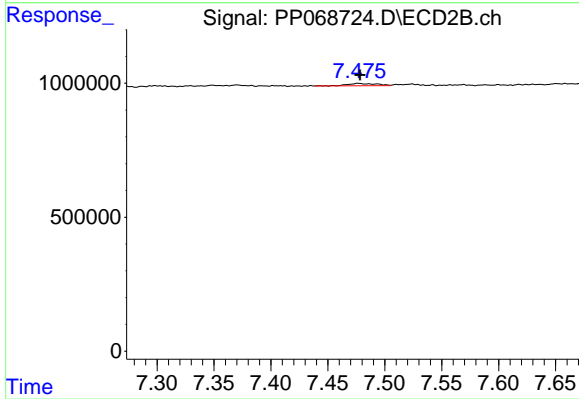
#33 AR-1260-3

R.T.: 6.996 min
 Delta R.T.: -0.009 min
 Response: 109983
 Conc: 1.78 ng/ml



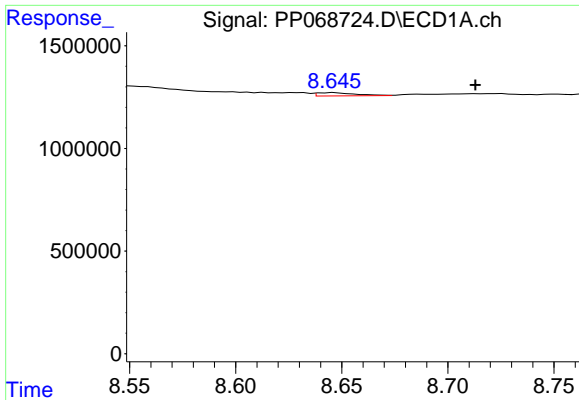
#34 AR-1260-4

R.T.: 8.390 min
 Delta R.T.: 0.014 min
 Response: 515245
 Conc: 8.28 ng/ml



#34 AR-1260-4

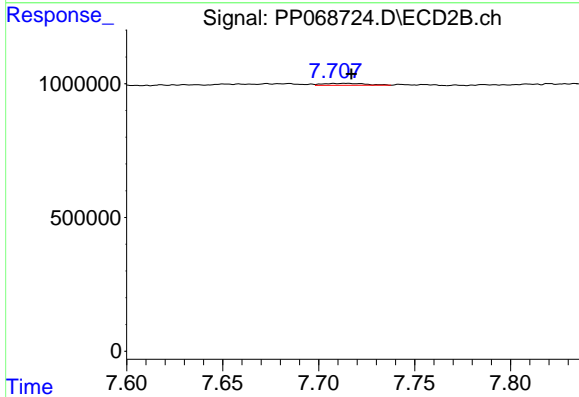
R.T.: 7.477 min
 Delta R.T.: -0.001 min
 Response: 150158
 Conc: 2.85 ng/ml



#35 AR-1260-5

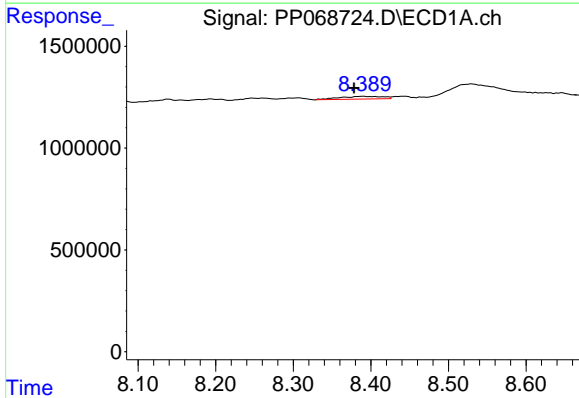
R.T.: 8.646 min
 Delta R.T.: -0.067 min
 Response: 193651
 Conc: 1.71 ng/ml

Instrument :
 ECD_P
 ClientSampleId :
 FCA546C-1-2



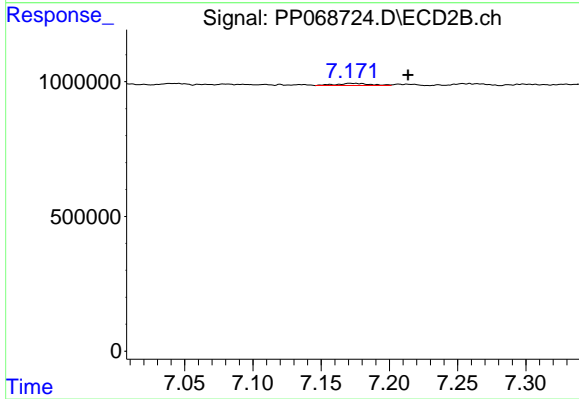
#35 AR-1260-5

R.T.: 7.714 min
 Delta R.T.: -0.003 min
 Response: 109541
 Conc: 0.92 ng/ml



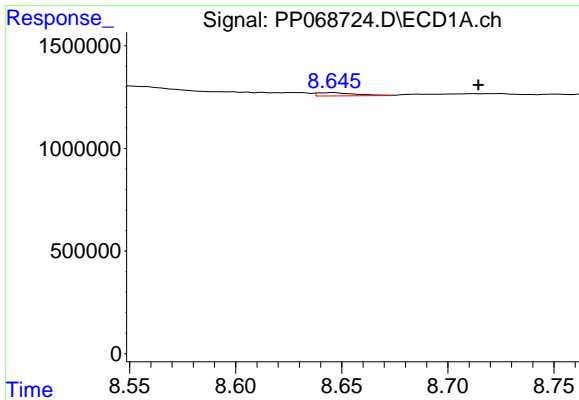
#36 AR-1262-1

R.T.: 8.390 min
 Delta R.T.: 0.011 min
 Response: 515245
 Conc: 6.95 ng/ml



#36 AR-1262-1

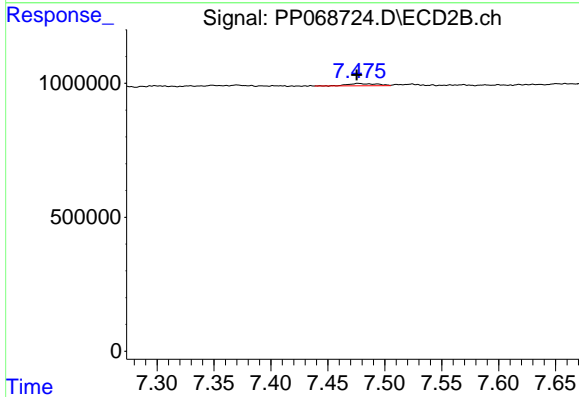
R.T.: 7.171 min
 Delta R.T.: -0.042 min
 Response: 139106
 Conc: 1.79 ng/ml



#37 AR-1262-2

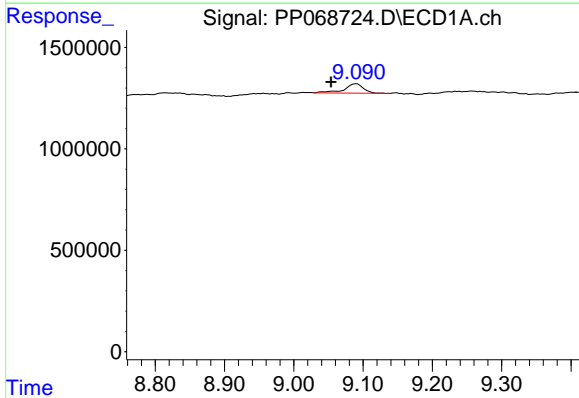
R.T.: 8.646 min
 Delta R.T.: -0.069 min
 Response: 193651
 Conc: 1.50 ng/ml

Instrument :
 ECD_P
 ClientSampleId :
 FCA546C-1-2



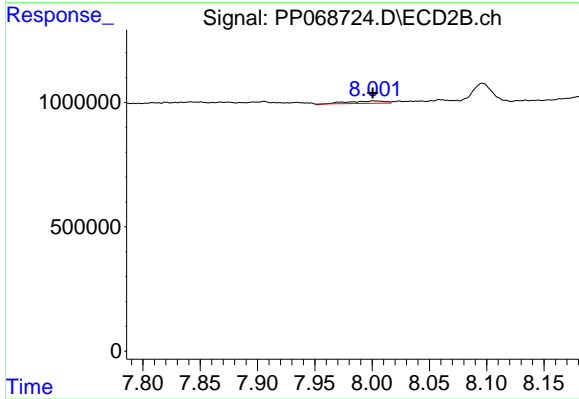
#37 AR-1262-2

R.T.: 7.477 min
 Delta R.T.: 0.002 min
 Response: 150158
 Conc: 2.12 ng/ml



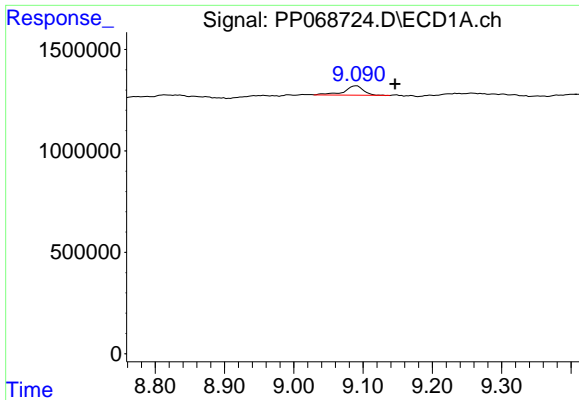
#38 AR-1262-3

R.T.: 9.090 min
 Delta R.T.: 0.037 min
 Response: 912942
 Conc: 9.54 ng/ml



#38 AR-1262-3

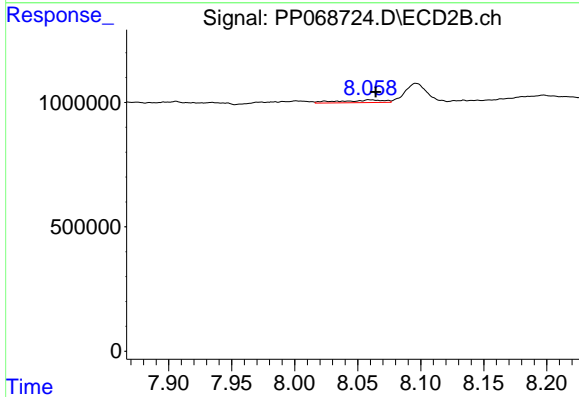
R.T.: 8.001 min
 Delta R.T.: 0.000 min
 Response: 208097
 Conc: 3.54 ng/ml



#39 AR-1262-4

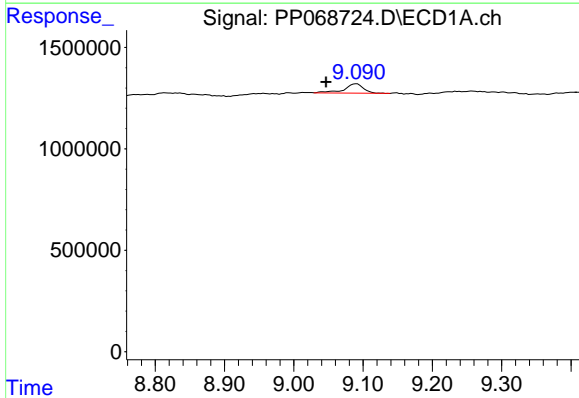
R.T.: 9.090 min
 Delta R.T.: -0.056 min
 Response: 912942
 Conc: 11.95 ng/ml

Instrument :
 ECD_P
 ClientSampleId :
 FCA546C-1-2



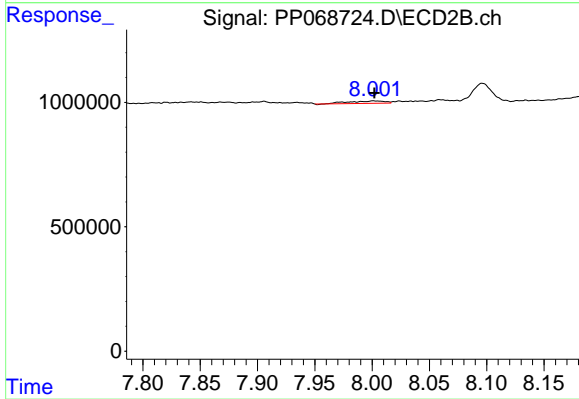
#39 AR-1262-4

R.T.: 8.059 min
 Delta R.T.: -0.005 min
 Response: 253443
 Conc: 2.45 ng/ml



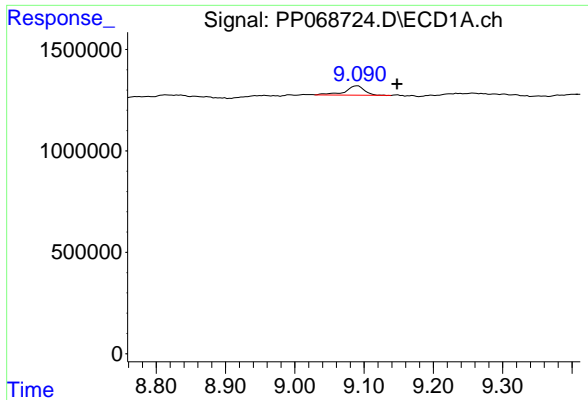
#41 AR-1268-1

R.T.: 9.090 min
 Delta R.T.: 0.043 min
 Response: 912942
 Conc: 5.92 ng/ml



#41 AR-1268-1

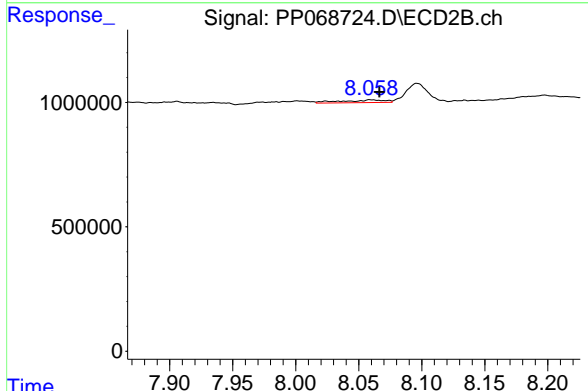
R.T.: 8.001 min
 Delta R.T.: 0.000 min
 Response: 208097
 Conc: 1.34 ng/ml



#42 AR-1268-2

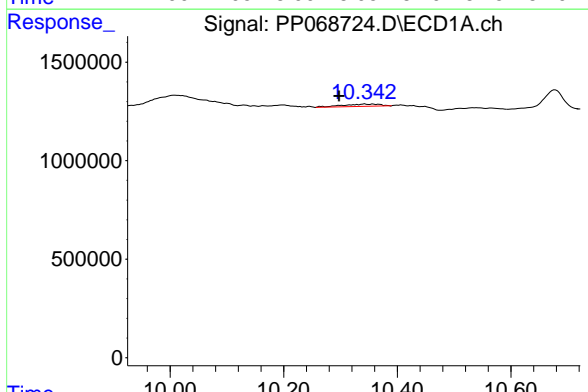
R.T.: 9.090 min
 Delta R.T.: -0.057 min
 Response: 912942
 Conc: 6.52 ng/ml

Instrument :
 ECD_P
 ClientSampleId :
 FCA546C-1-2



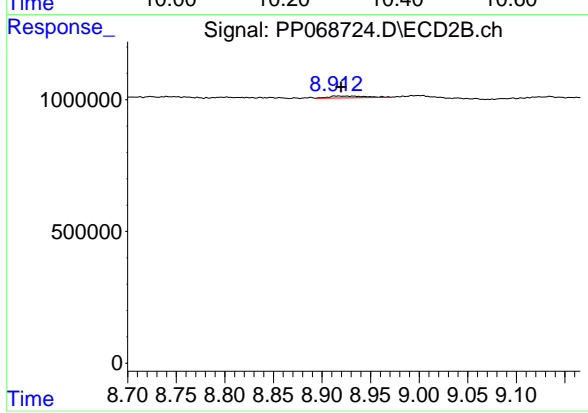
#42 AR-1268-2

R.T.: 8.059 min
 Delta R.T.: -0.007 min
 Response: 253443
 Conc: 1.79 ng/ml



#45 AR-1268-5

R.T.: 10.343 min
 Delta R.T.: 0.046 min
 Response: 527543
 Conc: 1.33 ng/ml



#45 AR-1268-5

R.T.: 8.917 min
 Delta R.T.: -0.002 min
 Response: 183603
 Conc: 0.49 ng/ml