

Data Path : Z:\pestpcbsrv\HPCHEM1\ECD_P\Data\PP112918\
 Data File : PP028229.D
 Signal(s) : Signal #1: ECD1A.CH Signal #2: ECD2B.CH
 Acq On : 30 Nov 2018 1:11
 Operator : EI\MA
 Sample : I.BLK
 Misc :
 ALS Vial : 2 Sample Multiplier: 1

Instrument :
 ECD_P
 ClientSampleId :

Integration File signal 1: autoint1.e
 Integration File signal 2: autoint2.e
 Quant Time: Nov 30 03:31:34 2018
 Quant Method : Z:\pestpcbsrv\HPCHEM1\ECD_P\methods\PP110918.M
 Quant Title : 8080.M
 QLast Update : Fri Nov 09 17:06:51 2018
 Response via : Initial Calibration
 Integrator: ChemStation 6890 Scale Mode: Large solvent peaks clipped

Volume Inj. : 2 µl
 Signal #1 Phase : ZB-CLPesticides-1 Signal #2 Phase: ZB-CLPesticides-2
 Signal #1 Info : 30M x 0.32mm x0.5 Signal #2 Info : 30M x 0.32mm x 0.25µm

Compound	RT#1	RT#2	Resp#1	Resp#2	ng/ml	ng/ml

System Monitoring Compounds						
4) S 2,4-DCAA	12.097	12.209	112.2E6	158.8E6	431.038	374.227
Target Compounds						
7) T MCPA	0.000	13.032	0	1408991	N.D.	1.090 #

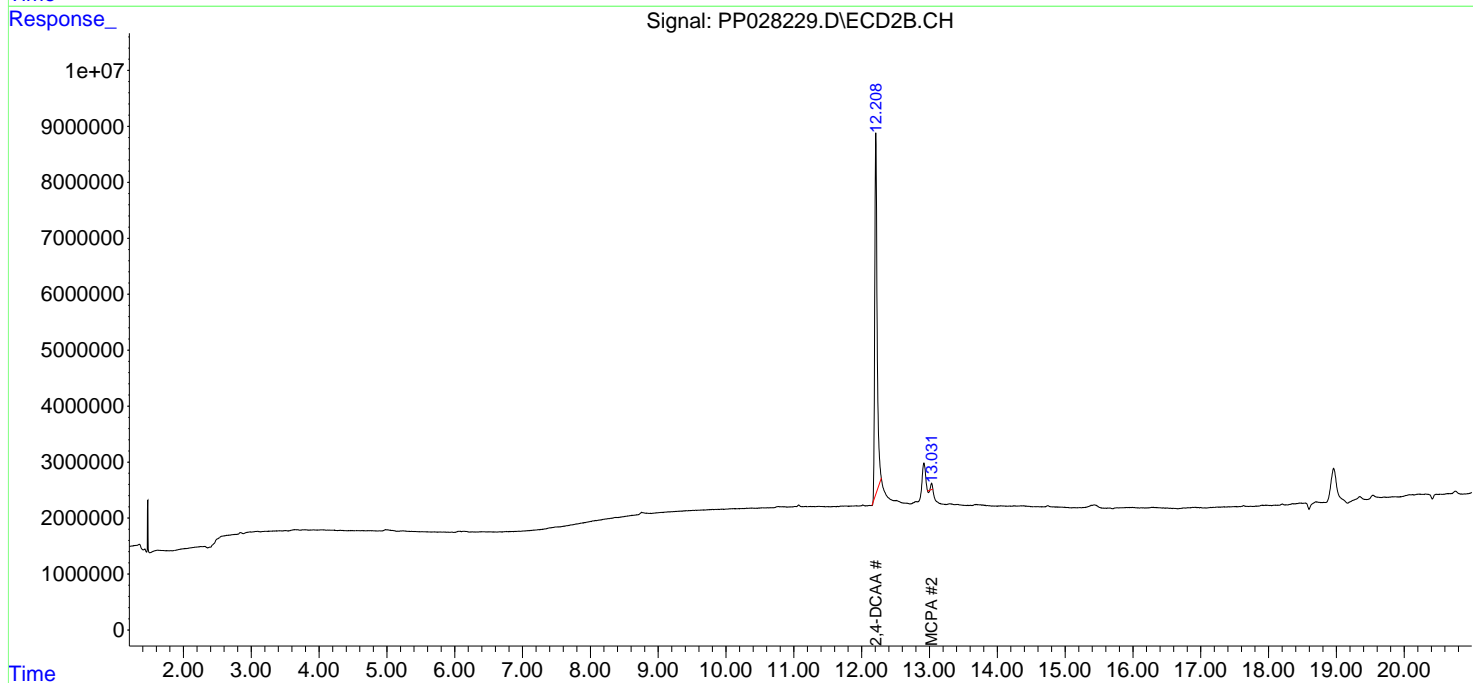
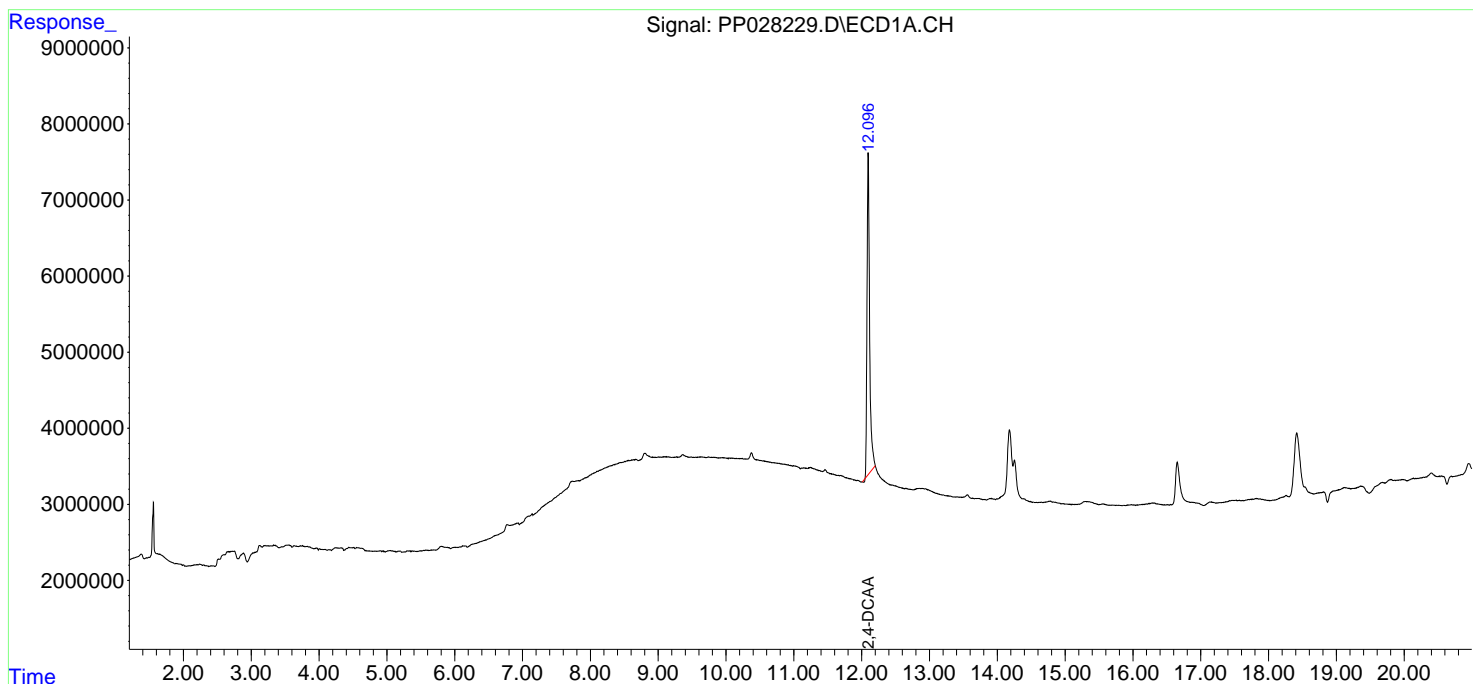
(f)=RT Delta > 1/2 Window (#)=Amounts differ by > 25% (m)=manual int.

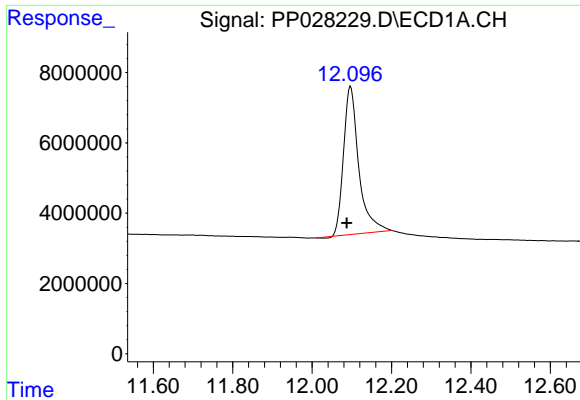
Data Path : Z:\pestpcbsrv\HPCHEM1\ECD_P\Data\PP112918\
 Data File : PP028229.D
 Signal(s) : Signal #1: ECD1A.CH Signal #2: ECD2B.CH
 Acq On : 30 Nov 2018 1:11
 Operator : EI\MA
 Sample : I.BLK
 Misc :
 ALS Vial : 2 Sample Multiplier: 1

Instrument :
 ECD_P
 ClientSampled :

Integration File signal 1: autoint1.e
 Integration File signal 2: autoint2.e
 Quant Time: Nov 30 03:31:34 2018
 Quant Method : Z:\pestpcbsrv\HPCHEM1\ECD_P\methods\PP110918.M
 Quant Title : 8080.M
 QLast Update : Fri Nov 09 17:06:51 2018
 Response via : Initial Calibration
 Integrator: ChemStation 6890 Scale Mode: Large solvent peaks clipped

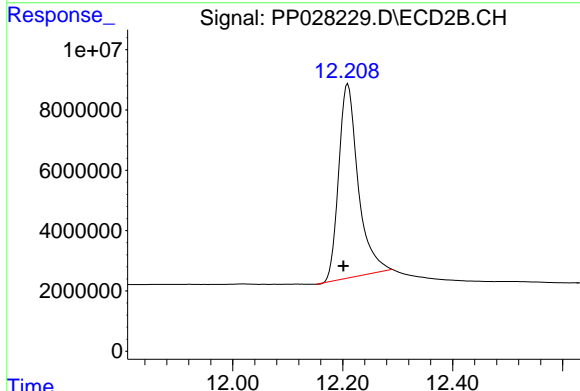
Volume Inj. : 2 µl
 Signal #1 Phase : ZB-CLPesticides-1 Signal #2 Phase: ZB-CLPesticides-2
 Signal #1 Info : 30M x 0.32mm x 0.5 Signal #2 Info : 30M x 0.32mm x 0.25µm



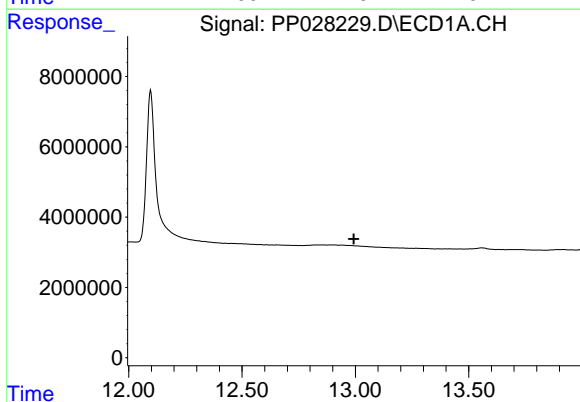


#4 2,4-DCAA
 R.T.: 12.097 min
 Delta R.T.: 0.009 min
 Response: 112202482
 Conc: 431.04 ng/ml

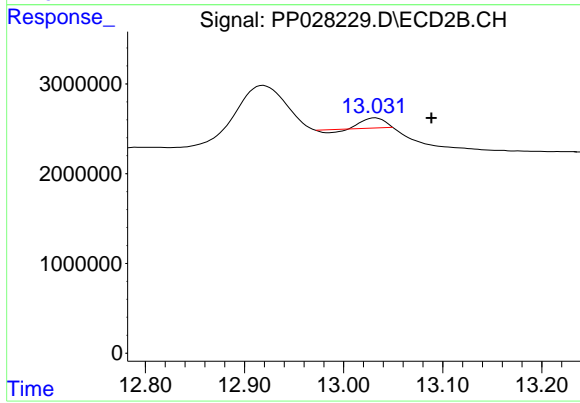
Instrument :
 ECD_P
 ClientSampled :



#4 2,4-DCAA
 R.T.: 12.209 min
 Delta R.T.: 0.008 min
 Response: 158832226
 Conc: 374.23 ng/ml



#7 MCPA
 R.T.: 0.000 min
 Exp R.T. : 12.993 min
 Response: 0
 Conc: N.D.



#7 MCPA
 R.T.: 13.032 min
 Delta R.T.: -0.056 min
 Response: 1408991
 Conc: 1.09 ug/ml