

Data Path : Z:\pestpcbsrv\HPCHEM1\ECD_P\Data\PP112923\
 Data File : PP061972.D
 Signal(s) : Signal #1: ECD1A.ch Signal #2: ECD2B.ch
 Acq On : 29 Nov 2023 14:26
 Operator : YP\AJ
 Sample : PB157453BS
 Misc :
 ALS Vial : 14 Sample Multiplier: 1

Instrument :
 ECD_P
 ClientSampleId :

Integration File signal 1: autoint1.e
 Integration File signal 2: autoint2.e
 Quant Time: Nov 29 15:16:01 2023
 Quant Method : Z:\pestpcbsrv\HPCHEM1\ECD_P\methods\PP112723.M
 Quant Title : GC EXTRACTABLES
 QLast Update : Tue Nov 28 04:28:00 2023
 Response via : Initial Calibration
 Integrator: ChemStation

Volume Inj. : 2 µl
 Signal #1 Phase : ZB-MR1 Signal #2 Phase: ZB-MR2
 Signal #1 Info : 30Mx0.32mmx 0.50µ Signal #2 Info : 30M x 0.32mm x 0.25µm

Compound	RT#1	RT#2	Resp#1	Resp#2	ng/ml	ng/ml

System Monitoring Compounds						
1) SA Tetrachlo...	4.452	3.725	28663003	36786011	21.773	20.444
2) SA Decachlor...	10.244	8.851	24314263	42018222	23.560	20.358
Target Compounds						
3) L1 AR-1016-1	5.627	4.838	23001193	30503530	464.181	460.460
4) L1 AR-1016-2	5.650	4.857	34204058	42428941	458.509	459.274
5) L1 AR-1016-3	5.712	5.037	22751564	23347731	462.307	460.240
6) L1 AR-1016-4	5.811	5.079	17837748	20884415	469.305	458.375
7) L1 AR-1016-5	6.107	5.297	18443676	26296743	479.599	454.874
8) L2 AR-1221-1	4.658	3.943	2170848	3072155	121.646	121.654
9) L2 AR-1221-2	4.749	4.032	2806504	3892080	210.439	204.617
10) L2 AR-1221-3	4.826	4.110	12423474	16945226	312.234	294.124
11) L3 AR-1232-1	4.826	4.110	12423474	16945226	373.248	359.882
12) L3 AR-1232-2	5.357	4.857	19709739	42428941	989.407	1030.846
13) L3 AR-1232-3	5.650	5.037	34204058	23347731	1007.506	1030.607
14) L3 AR-1232-4	5.811	5.122	17837748	25441711	1055.802	1114.088
15) L3 AR-1232-5	5.902	5.297	17143148	26296743	1137.521	1033.333
16) L4 AR-1242-1	5.627	4.838	23001193	30503530	578.752	575.692
17) L4 AR-1242-2	5.650	4.857	34204058	42428941	575.304	582.712
18) L4 AR-1242-3	5.712	5.037	22751564	23347731	581.842	576.133
19) L4 AR-1242-4	5.811	5.122	17837748	25441711	588.197	563.692
20) L4 AR-1242-5	6.552	5.656	2370221	21290520	79.054	406.850 #
21) L5 AR-1248-1	5.627	4.838	23001193	30503530	752.756	764.057
22) L5 AR-1248-2	5.902	5.079	17143148	20884415	350.421	330.646
23) L5 AR-1248-3	6.107	5.122	18443676	25441711	354.517	387.909
24) L5 AR-1248-4	6.511	5.297	2272499	26296743	44.835	341.622 #
25) L5 AR-1248-5	6.552	5.656	2370221	21290520	45.867	213.047 #
26) L6 AR-1254-1	6.485	5.656	14266577	21290520	254.293	195.534
27) L6 AR-1254-2	6.705	5.805	14927428	20667366	179.028	205.927
28) L6 AR-1254-3	7.073	6.231	7605998	36454303	91.938	233.344 #
29) L6 AR-1254-4	7.360	6.447	4507156	3182761	85.948	40.044 #
30) L6 AR-1254-5	7.780	6.870	41112926	65687370	645.414	465.448 #
31) L7 AR-1260-1	7.237	6.348	31676953	50510170	463.730	434.016
32) L7 AR-1260-2	7.496	6.538	34570638	58592776	458.976	430.030
33) L7 AR-1260-3	7.857	6.694	23818989	55840361	459.771	426.777
34) L7 AR-1260-4	8.083	7.173	27792688	41384858	455.415	419.650
35) L7 AR-1260-5	8.407	7.416	46730099	91281615	466.001	426.297
36) L8 AR-1262-1	7.915	6.964	13638353	23709117	385.406	373.216
37) L8 AR-1262-2	8.407	7.173	46730099	41384858	394.088	306.380
38) L8 AR-1262-3	8.734	7.704	32133768	19057602	366.874	182.152 #
39) L8 AR-1262-4	8.810	7.768	9671515	64887335	128.429	359.989 #
40) L8 AR-1262-5	9.478	8.274	12082948	19703512	280.959	257.926
41) L9 AR-1268-1	8.734	7.704	32133768	19057602	213.398	63.538 #

Data Path : Z:\pestpcbsrv\HPCHEM1\ECD_P\Data\PP112923\
 Data File : PP061972.D
 Signal(s) : Signal #1: ECD1A.ch Signal #2: ECD2B.ch
 Acq On : 29 Nov 2023 14:26
 Operator : YP\AJ
 Sample : PB157453BS
 Misc :
 ALS Vial : 14 Sample Multiplier: 1

Instrument :
 ECD_P
 ClientSampleId :

Integration File signal 1: autoint1.e
 Integration File signal 2: autoint2.e
 Quant Time: Nov 29 15:16:01 2023
 Quant Method : Z:\pestpcbsrv\HPCHEM1\ECD_P\methods\PP112723.M
 Quant Title : GC EXTRACTABLES
 QLast Update : Tue Nov 28 04:28:00 2023
 Response via : Initial Calibration
 Integrator: ChemStation

Volume Inj. : 2 µl
 Signal #1 Phase : ZB-MR1 Signal #2 Phase: ZB-MR2
 Signal #1 Info : 30Mx0.32mmx 0.50µ Signal #2 Info : 30M x 0.32mm x 0.25µm

	Compound	RT#1	RT#2	Resp#1	Resp#2	ng/ml	ng/ml
42)	L9 AR-1268-2	8.810	7.768	9671515	64887335	68.840	244.520 #
43)	L9 AR-1268-3	9.045	7.980	950952	1629156	8.015	6.707
44)	L9 AR-1268-4	9.478	8.274	12082948	19703512	267.640	228.215
45)	L9 AR-1268-5	9.898	8.580	4204533	7613876	12.828	11.012

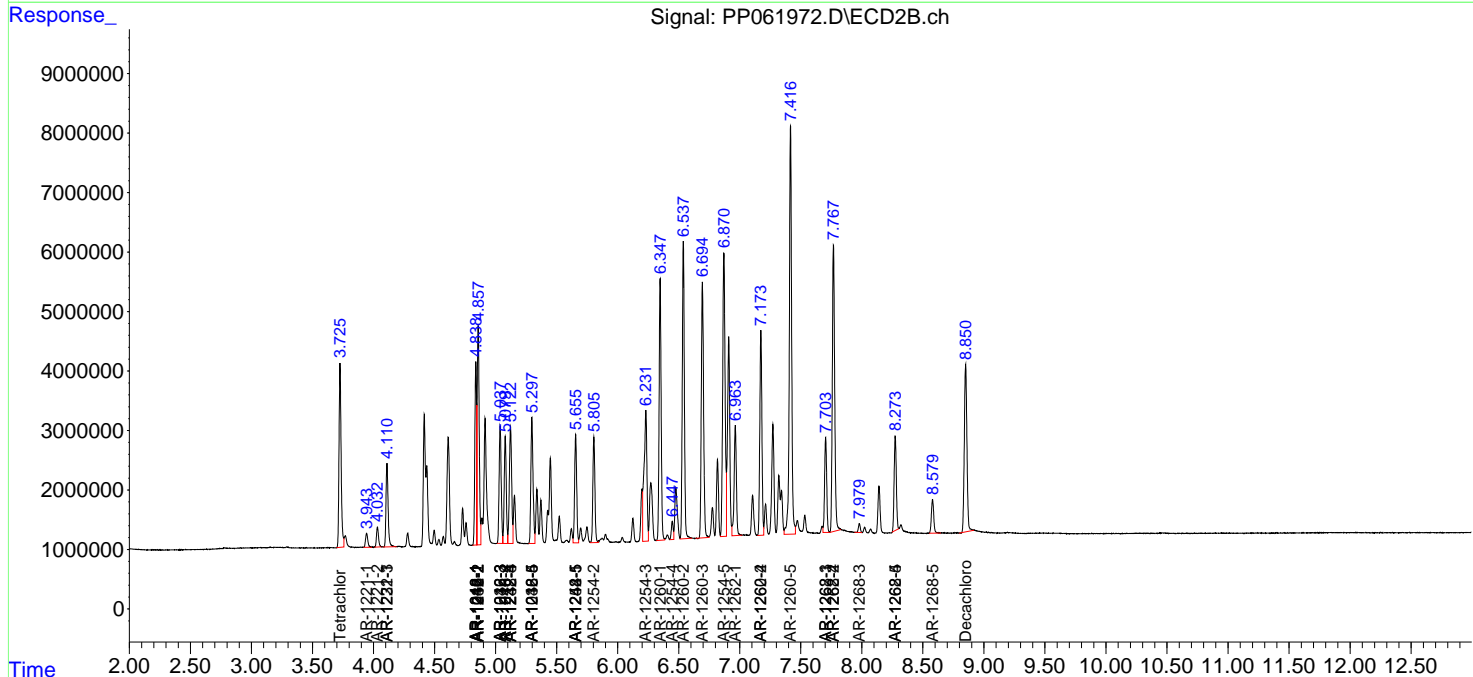
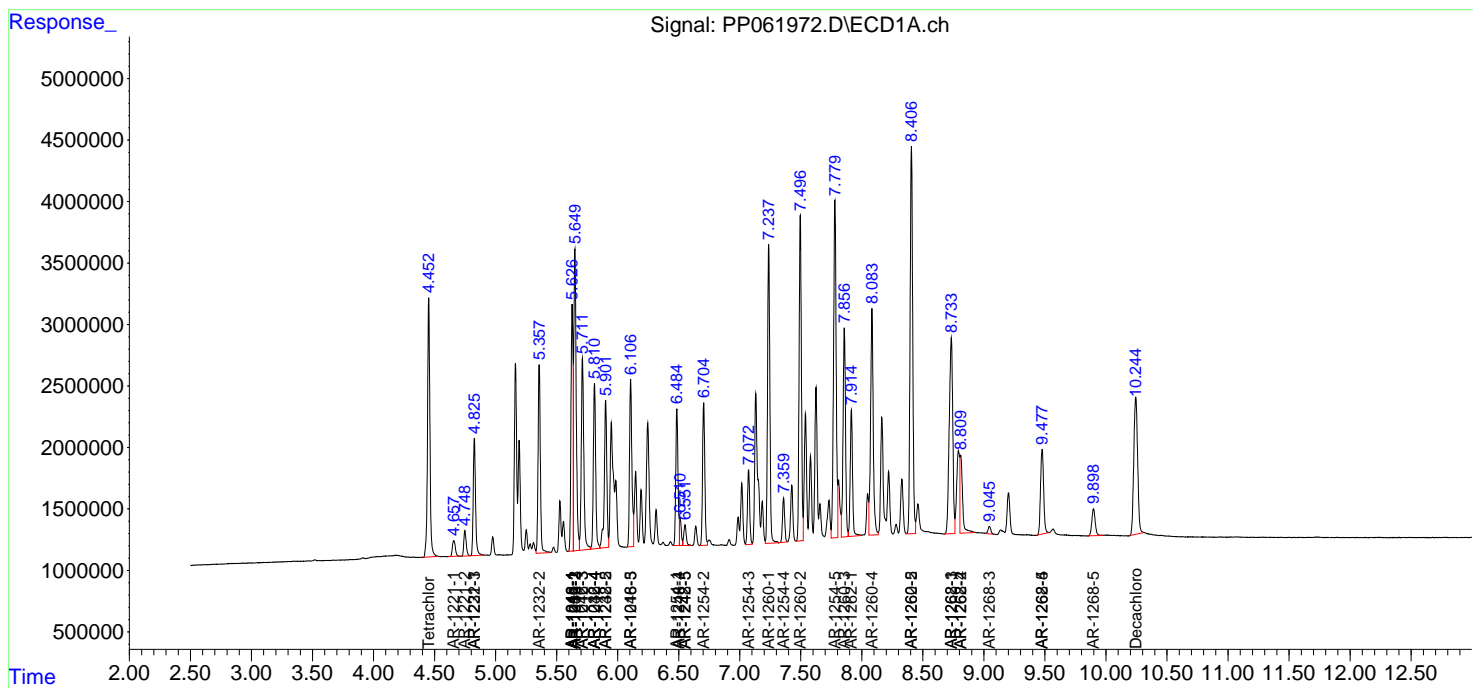
(f)=RT Delta > 1/2 Window (#)=Amounts differ by > 25% (m)=manual int.

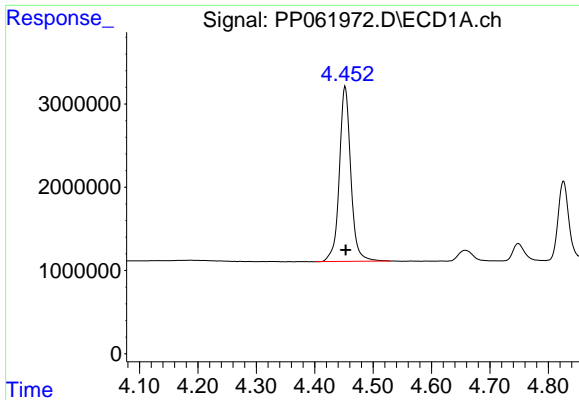
Data Path : Z:\pestpcbsrv\HPCHEM1\ECD_P\Data\PP112923\
 Data File : PP061972.D
 Signal(s) : Signal #1: ECD1A.ch Signal #2: ECD2B.ch
 Acq On : 29 Nov 2023 14:26
 Operator : YP\AJ
 Sample : PB157453BS
 Misc :
 ALS Vial : 14 Sample Multiplier: 1

Instrument :
 ECD_P
 ClientSampleId :

Integration File signal 1: autoint1.e
 Integration File signal 2: autoint2.e
 Quant Time: Nov 29 15:16:01 2023
 Quant Method : Z:\pestpcbsrv\HPCHEM1\ECD_P\methods\PP112723.M
 Quant Title : GC EXTRACTABLES
 QLast Update : Tue Nov 28 04:28:00 2023
 Response via : Initial Calibration
 Integrator: ChemStation

Volume Inj. : 2 µl
 Signal #1 Phase : ZB-MR1 Signal #2 Phase: ZB-MR2
 Signal #1 Info : 30Mx0.32mmx 0.50µ Signal #2 Info : 30M x 0.32mm x 0.25µm

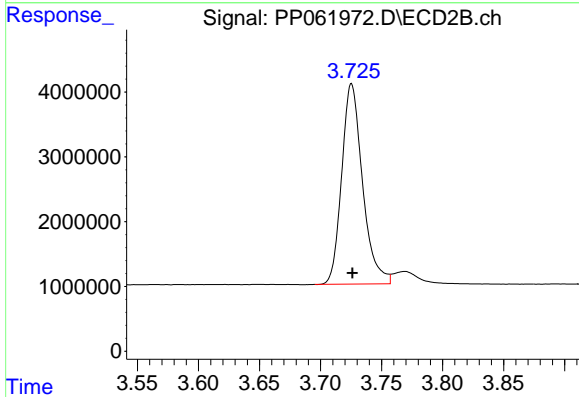




#1 Tetrachloro-m-xylene

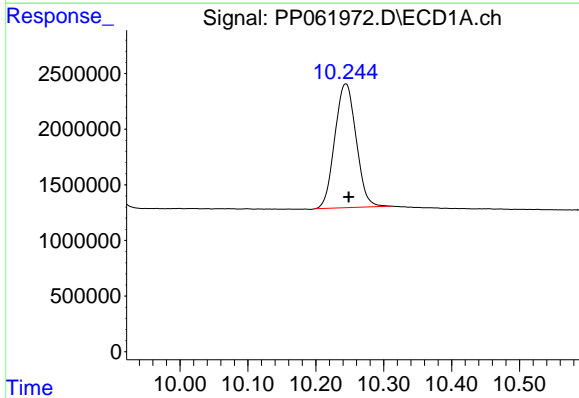
R.T.: 4.452 min
Delta R.T.: 0.000 min
Response: 28663003
Conc: 21.77 ng/ml

Instrument :
ECD_P
ClientSampleId :



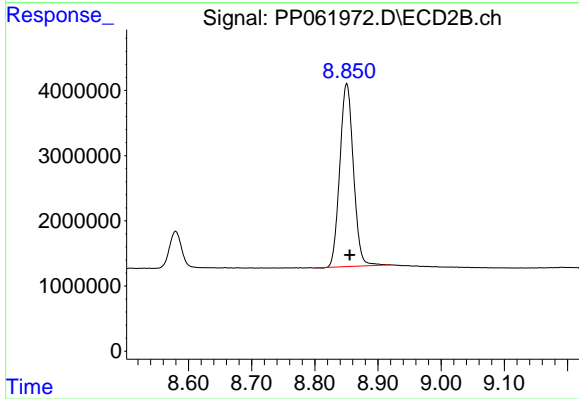
#1 Tetrachloro-m-xylene

R.T.: 3.725 min
Delta R.T.: 0.000 min
Response: 36786011
Conc: 20.44 ng/ml



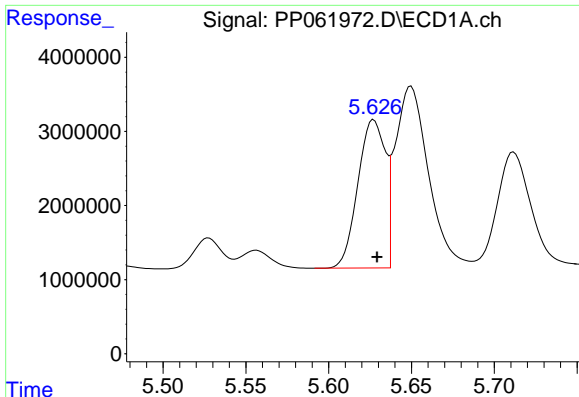
#2 Decachlorobiphenyl

R.T.: 10.244 min
Delta R.T.: -0.004 min
Response: 24314263
Conc: 23.56 ng/ml



#2 Decachlorobiphenyl

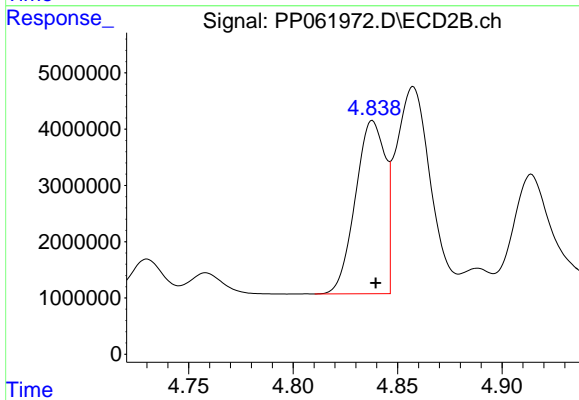
R.T.: 8.851 min
Delta R.T.: -0.005 min
Response: 42018222
Conc: 20.36 ng/ml



#3 AR-1016-1

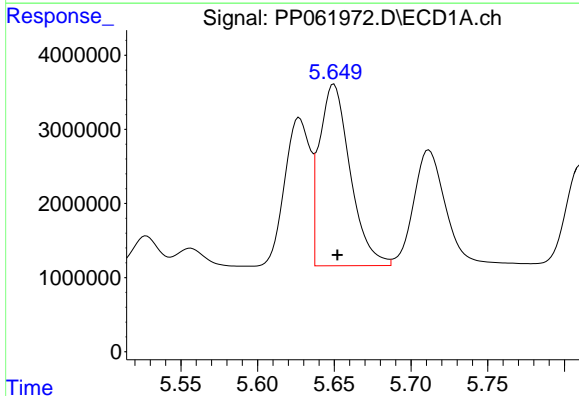
R.T.: 5.627 min
 Delta R.T.: -0.002 min
 Response: 23001193
 Conc: 464.18 ng/ml

Instrument :
 ECD_P
 ClientSampleId :



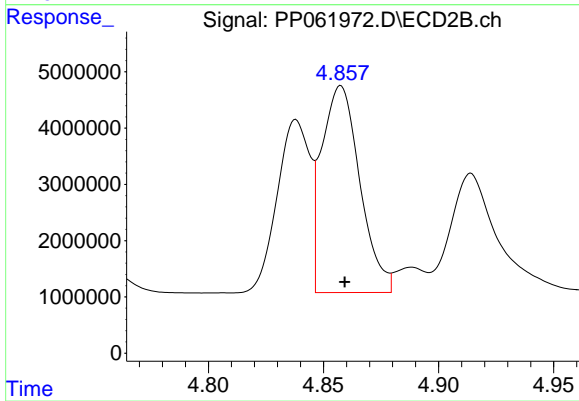
#3 AR-1016-1

R.T.: 4.838 min
 Delta R.T.: -0.002 min
 Response: 30503530
 Conc: 460.46 ng/ml



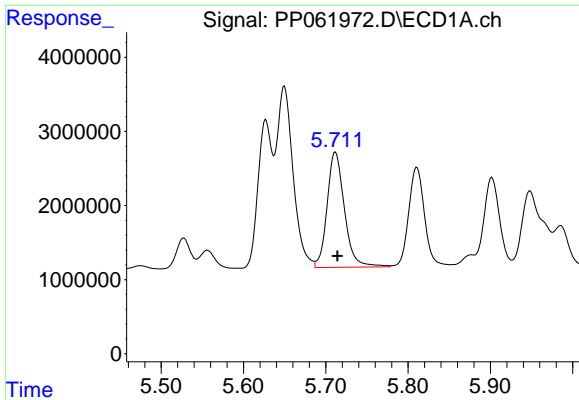
#4 AR-1016-2

R.T.: 5.650 min
 Delta R.T.: -0.002 min
 Response: 34204058
 Conc: 458.51 ng/ml



#4 AR-1016-2

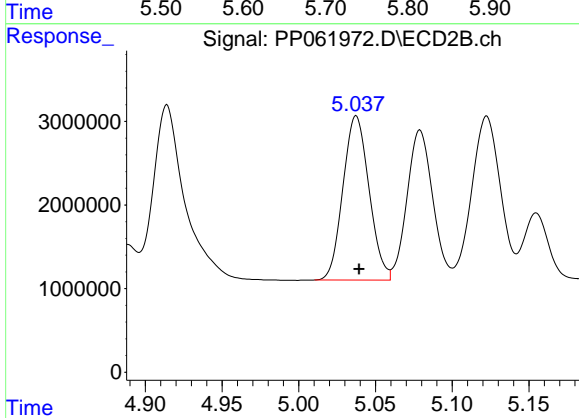
R.T.: 4.857 min
 Delta R.T.: -0.002 min
 Response: 42428941
 Conc: 459.27 ng/ml



#5 AR-1016-3

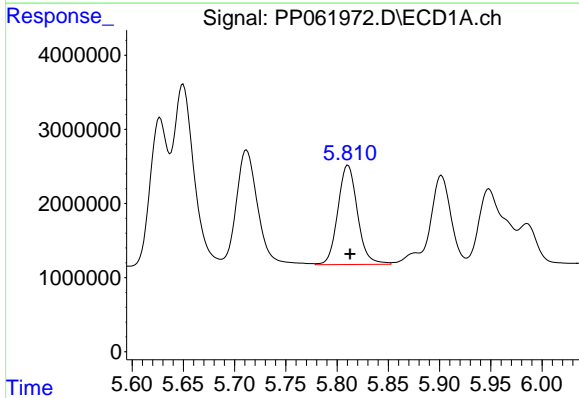
R.T.: 5.712 min
 Delta R.T.: -0.002 min
 Response: 22751564
 Conc: 462.31 ng/ml

Instrument :
 ECD_P
 ClientSampleId :



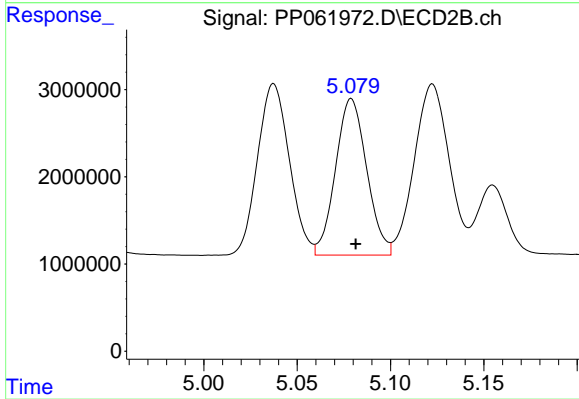
#5 AR-1016-3

R.T.: 5.037 min
 Delta R.T.: -0.002 min
 Response: 23347731
 Conc: 460.24 ng/ml



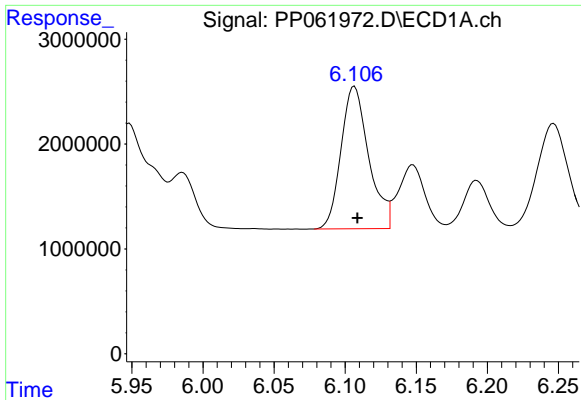
#6 AR-1016-4

R.T.: 5.811 min
 Delta R.T.: -0.002 min
 Response: 17837748
 Conc: 469.31 ng/ml



#6 AR-1016-4

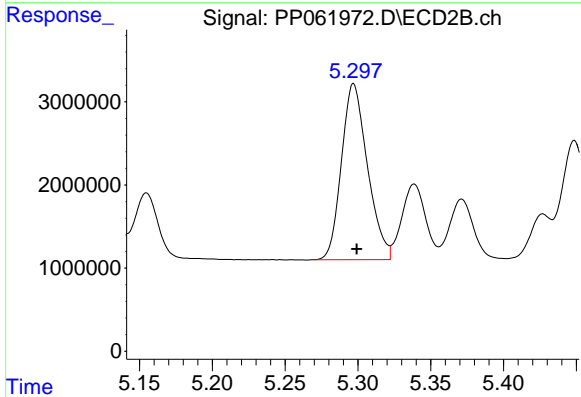
R.T.: 5.079 min
 Delta R.T.: -0.002 min
 Response: 20884415
 Conc: 458.38 ng/ml



#7 AR-1016-5

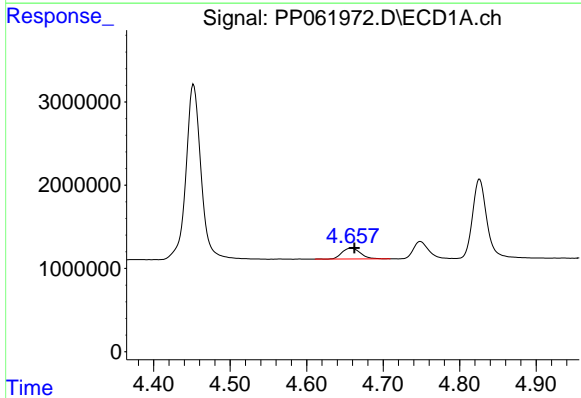
R.T.: 6.107 min
 Delta R.T.: -0.002 min
 Response: 18443676
 Conc: 479.60 ng/ml

Instrument :
 ECD_P
 ClientSampleId :



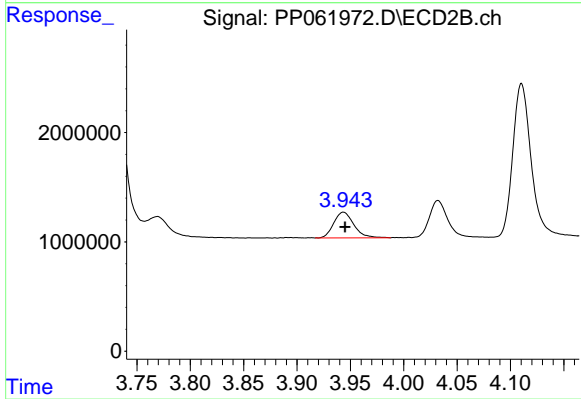
#7 AR-1016-5

R.T.: 5.297 min
 Delta R.T.: -0.002 min
 Response: 26296743
 Conc: 454.87 ng/ml



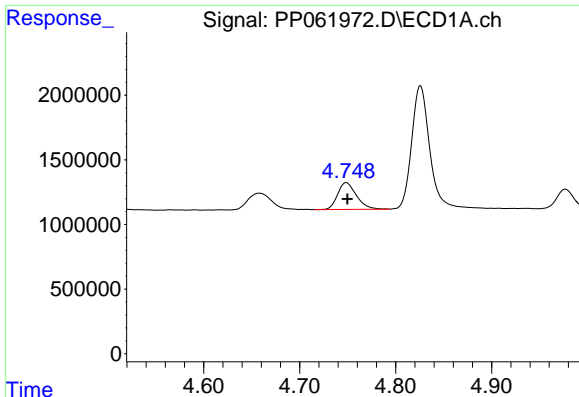
#8 AR-1221-1

R.T.: 4.658 min
 Delta R.T.: -0.004 min
 Response: 2170848
 Conc: 121.65 ng/ml



#8 AR-1221-1

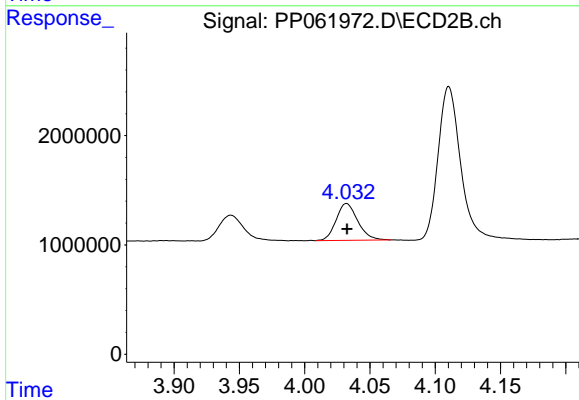
R.T.: 3.943 min
 Delta R.T.: -0.002 min
 Response: 3072155
 Conc: 121.65 ng/ml



#9 AR-1221-2

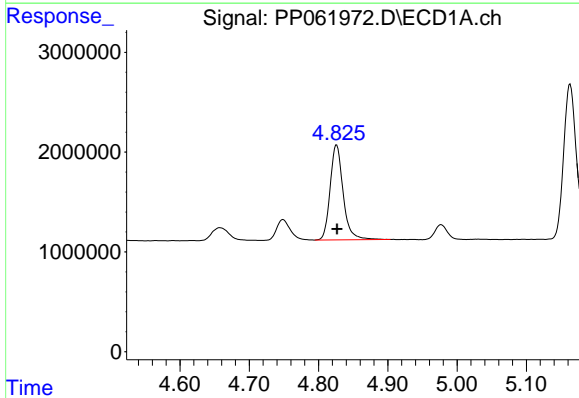
R.T.: 4.749 min
 Delta R.T.: 0.000 min
 Response: 2806504
 Conc: 210.44 ng/ml

Instrument :
 ECD_P
 ClientSampleId :



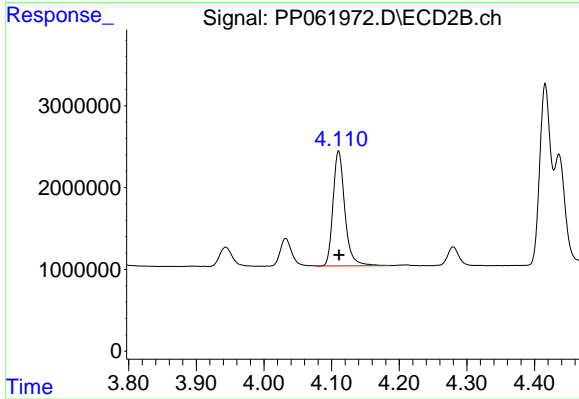
#9 AR-1221-2

R.T.: 4.032 min
 Delta R.T.: 0.000 min
 Response: 3892080
 Conc: 204.62 ng/ml



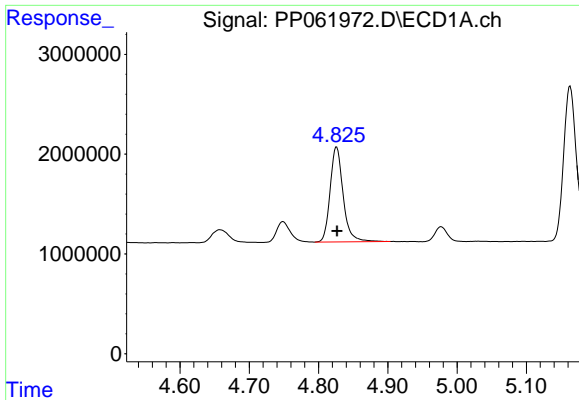
#10 AR-1221-3

R.T.: 4.826 min
 Delta R.T.: 0.000 min
 Response: 12423474
 Conc: 312.23 ng/ml



#10 AR-1221-3

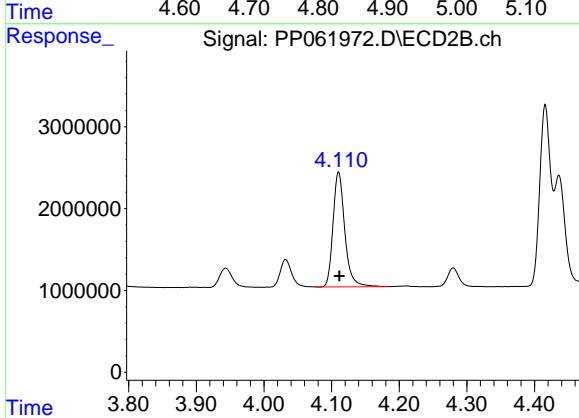
R.T.: 4.110 min
 Delta R.T.: 0.000 min
 Response: 16945226
 Conc: 294.12 ng/ml



#11 AR-1232-1

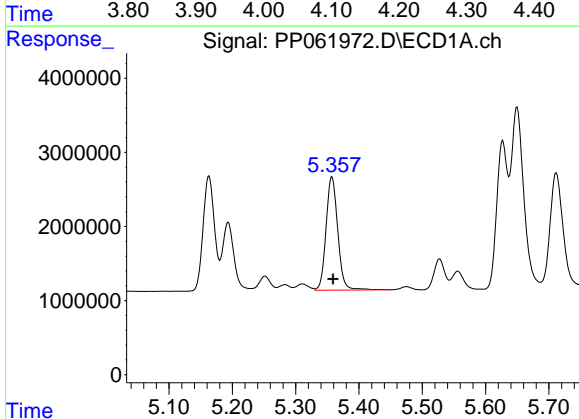
R.T.: 4.826 min
 Delta R.T.: 0.000 min
 Response: 12423474
 Conc: 373.25 ng/ml

Instrument :
 ECD_P
 ClientSampleId :



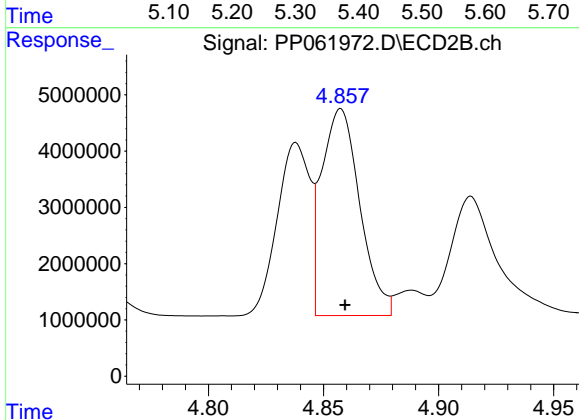
#11 AR-1232-1

R.T.: 4.110 min
 Delta R.T.: 0.000 min
 Response: 16945226
 Conc: 359.88 ng/ml



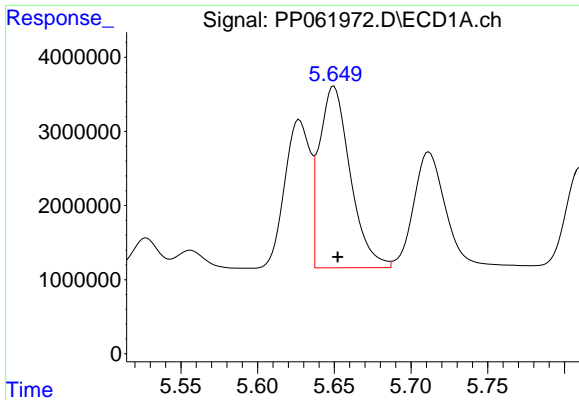
#12 AR-1232-2

R.T.: 5.357 min
 Delta R.T.: -0.002 min
 Response: 19709739
 Conc: 989.41 ng/ml



#12 AR-1232-2

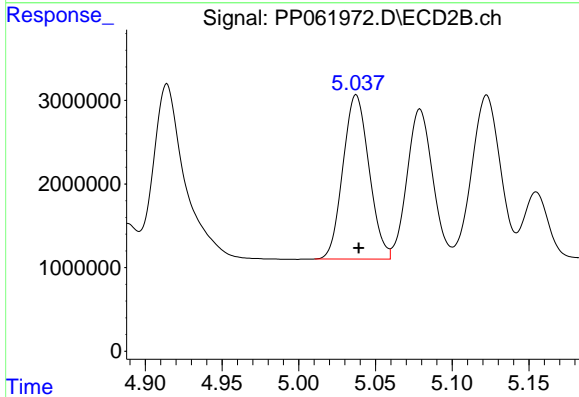
R.T.: 4.857 min
 Delta R.T.: -0.002 min
 Response: 42428941
 Conc: 1030.85 ng/ml



#13 AR-1232-3

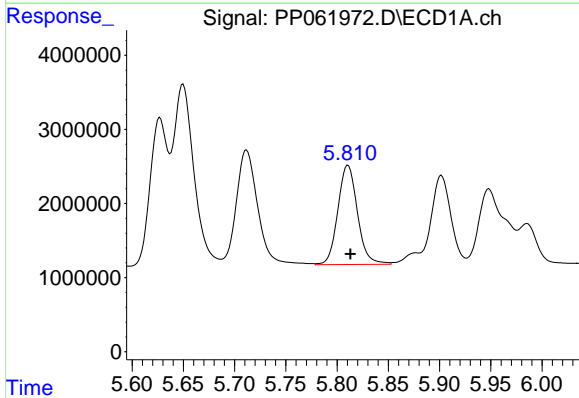
R.T.: 5.650 min
 Delta R.T.: -0.002 min
 Response: 34204058
 Conc: 1007.51 ng/ml

Instrument :
 ECD_P
 ClientSampleId :



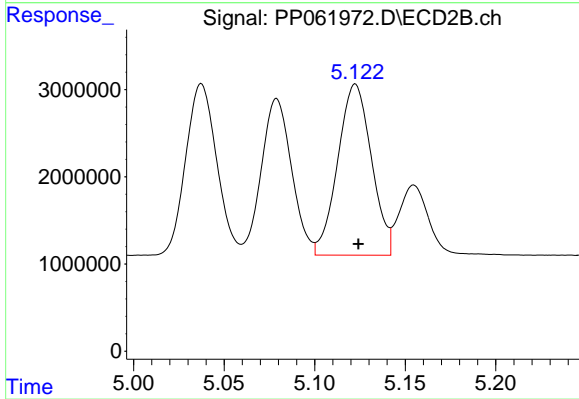
#13 AR-1232-3

R.T.: 5.037 min
 Delta R.T.: -0.002 min
 Response: 23347731
 Conc: 1030.61 ng/ml



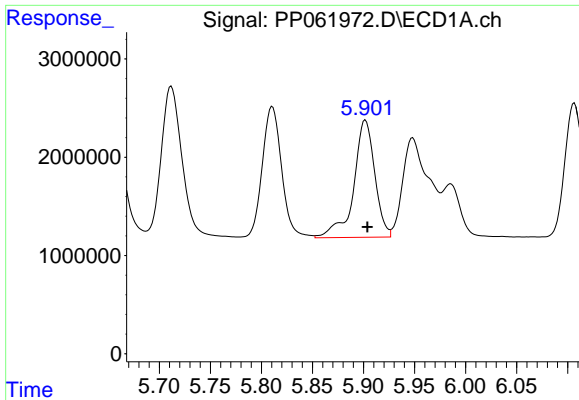
#14 AR-1232-4

R.T.: 5.811 min
 Delta R.T.: -0.002 min
 Response: 17837748
 Conc: 1055.80 ng/ml



#14 AR-1232-4

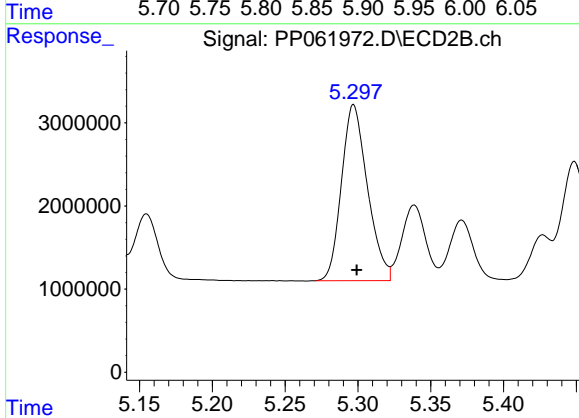
R.T.: 5.122 min
 Delta R.T.: -0.002 min
 Response: 25441711
 Conc: 1114.09 ng/ml



#15 AR-1232-5

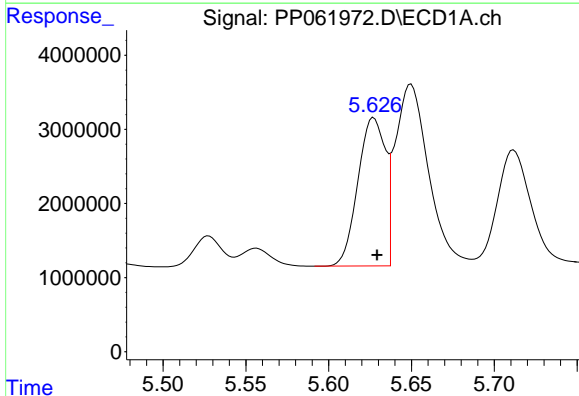
R.T.: 5.902 min
 Delta R.T.: -0.002 min
 Response: 17143148
 Conc: 1137.52 ng/ml

Instrument :
 ECD_P
 ClientSampleId :



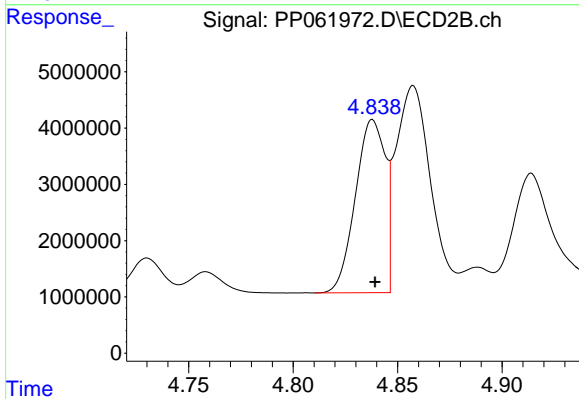
#15 AR-1232-5

R.T.: 5.297 min
 Delta R.T.: -0.002 min
 Response: 26296743
 Conc: 1033.33 ng/ml



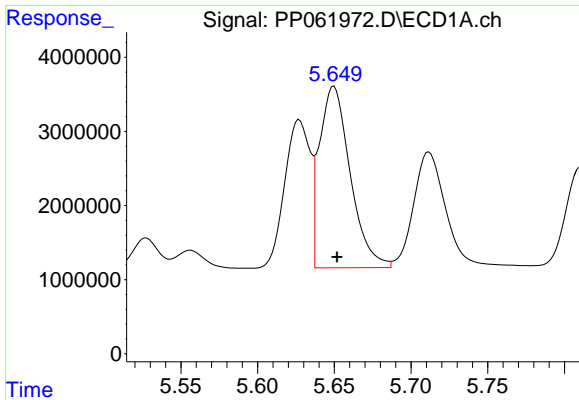
#16 AR-1242-1

R.T.: 5.627 min
 Delta R.T.: -0.002 min
 Response: 23001193
 Conc: 578.75 ng/ml



#16 AR-1242-1

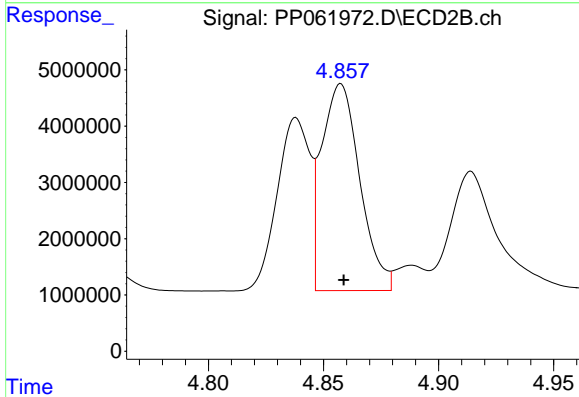
R.T.: 4.838 min
 Delta R.T.: -0.001 min
 Response: 30503530
 Conc: 575.69 ng/ml



#17 AR-1242-2

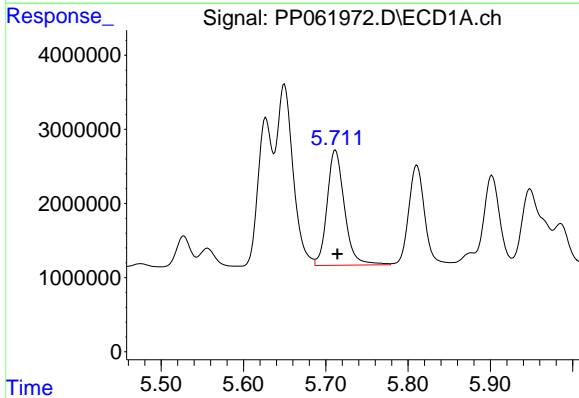
R.T.: 5.650 min
 Delta R.T.: -0.002 min
 Response: 34204058
 Conc: 575.30 ng/ml

Instrument :
 ECD_P
 ClientSampleId :



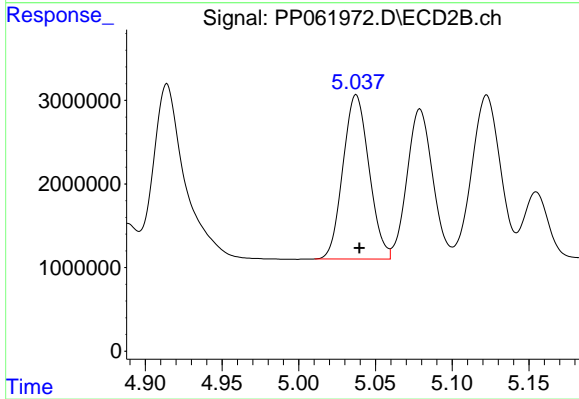
#17 AR-1242-2

R.T.: 4.857 min
 Delta R.T.: -0.001 min
 Response: 42428941
 Conc: 582.71 ng/ml



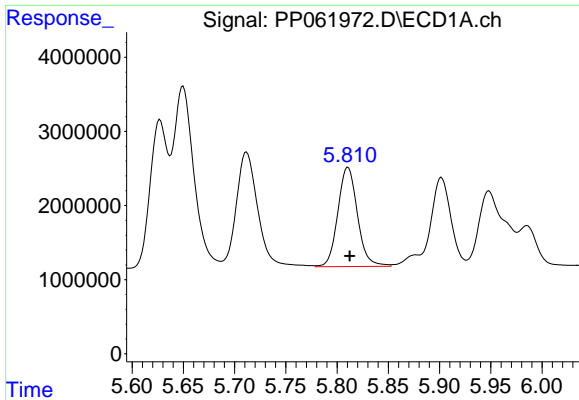
#18 AR-1242-3

R.T.: 5.712 min
 Delta R.T.: -0.002 min
 Response: 22751564
 Conc: 581.84 ng/ml



#18 AR-1242-3

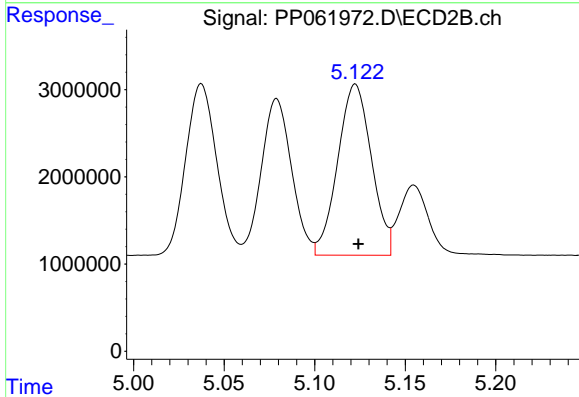
R.T.: 5.037 min
 Delta R.T.: -0.002 min
 Response: 23347731
 Conc: 576.13 ng/ml



#19 AR-1242-4

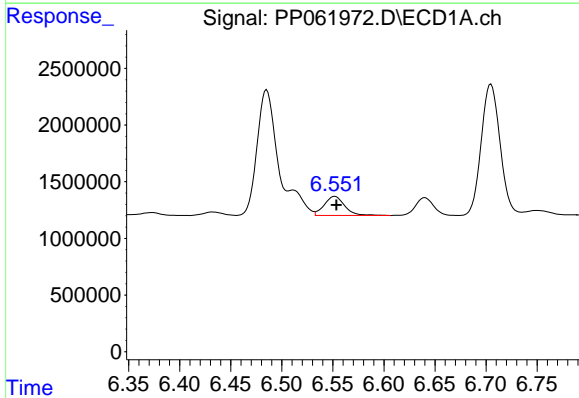
R.T.: 5.811 min
 Delta R.T.: -0.002 min
 Response: 17837748
 Conc: 588.20 ng/ml

Instrument :
 ECD_P
 ClientSampleId :



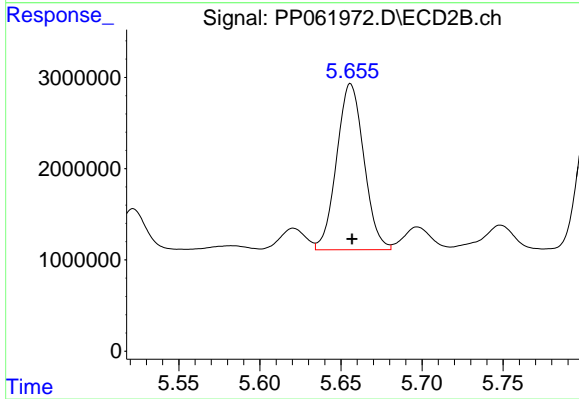
#19 AR-1242-4

R.T.: 5.122 min
 Delta R.T.: -0.002 min
 Response: 25441711
 Conc: 563.69 ng/ml



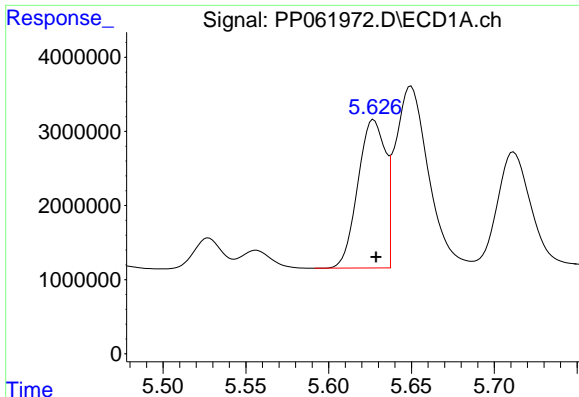
#20 AR-1242-5

R.T.: 6.552 min
 Delta R.T.: -0.001 min
 Response: 2370221
 Conc: 79.05 ng/ml



#20 AR-1242-5

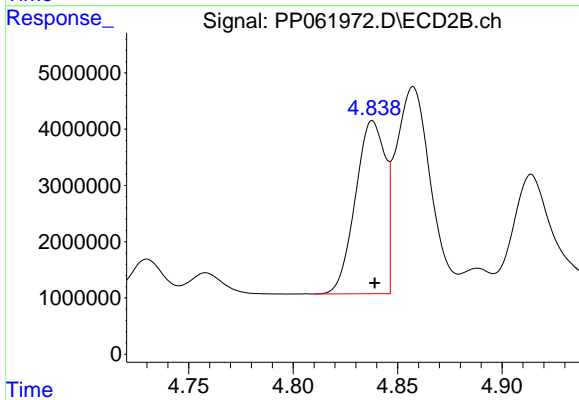
R.T.: 5.656 min
 Delta R.T.: -0.001 min
 Response: 21290520
 Conc: 406.85 ng/ml



#21 AR-1248-1

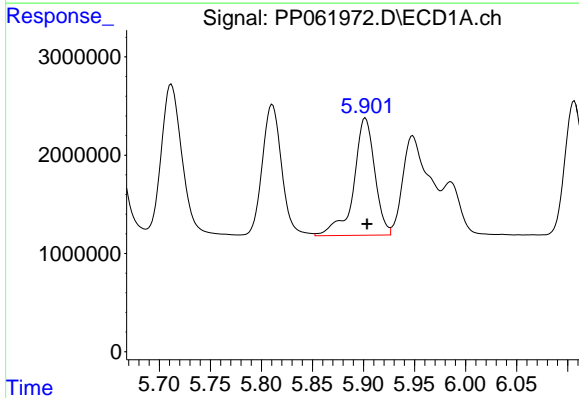
R.T.: 5.627 min
 Delta R.T.: -0.001 min
 Response: 23001193
 Conc: 752.76 ng/ml

Instrument :
 ECD_P
 ClientSampleId :



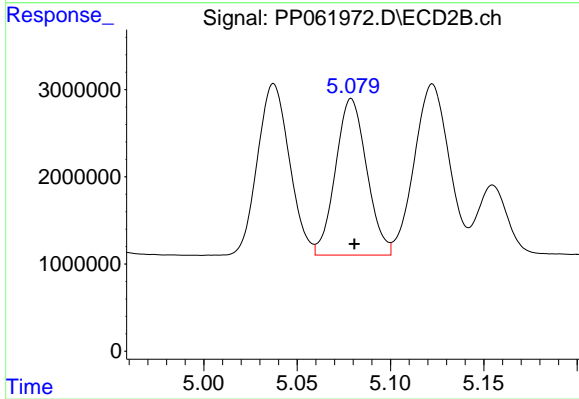
#21 AR-1248-1

R.T.: 4.838 min
 Delta R.T.: -0.001 min
 Response: 30503530
 Conc: 764.06 ng/ml



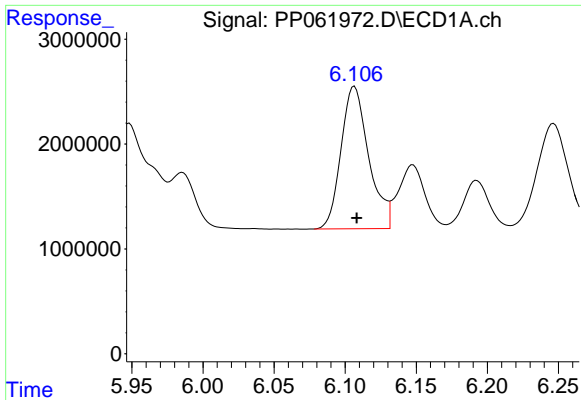
#22 AR-1248-2

R.T.: 5.902 min
 Delta R.T.: -0.002 min
 Response: 17143148
 Conc: 350.42 ng/ml



#22 AR-1248-2

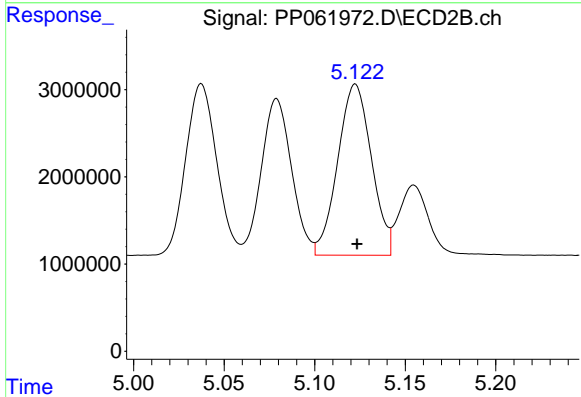
R.T.: 5.079 min
 Delta R.T.: -0.002 min
 Response: 20884415
 Conc: 330.65 ng/ml



#23 AR-1248-3

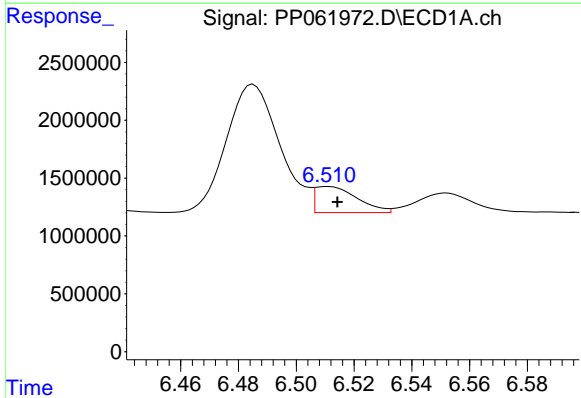
R.T.: 6.107 min
 Delta R.T.: -0.002 min
 Response: 18443676
 Conc: 354.52 ng/ml

Instrument :
 ECD_P
 ClientSampleId :



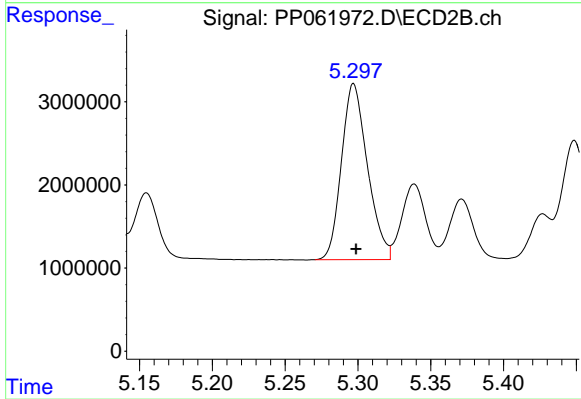
#23 AR-1248-3

R.T.: 5.122 min
 Delta R.T.: 0.000 min
 Response: 25441711
 Conc: 387.91 ng/ml



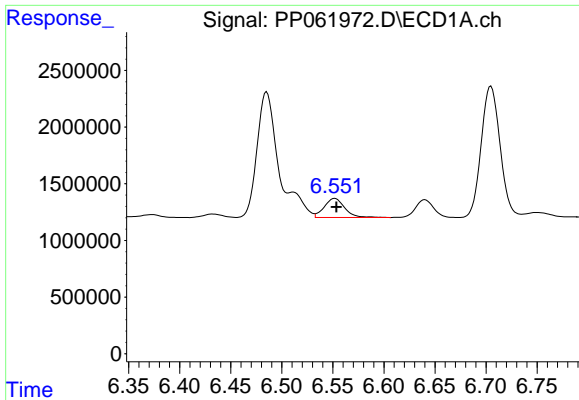
#24 AR-1248-4

R.T.: 6.511 min
 Delta R.T.: -0.003 min
 Response: 2272499
 Conc: 44.83 ng/ml



#24 AR-1248-4

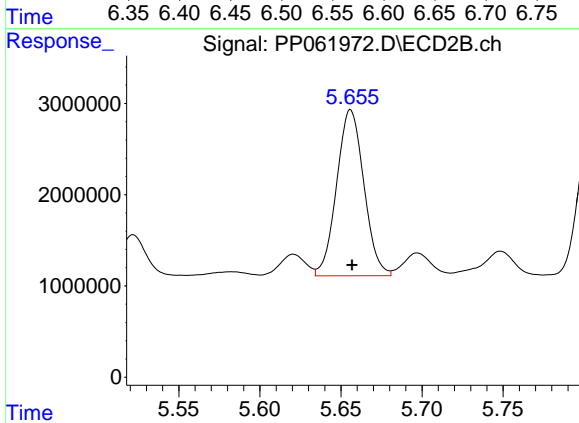
R.T.: 5.297 min
 Delta R.T.: -0.002 min
 Response: 26296743
 Conc: 341.62 ng/ml



#25 AR-1248-5

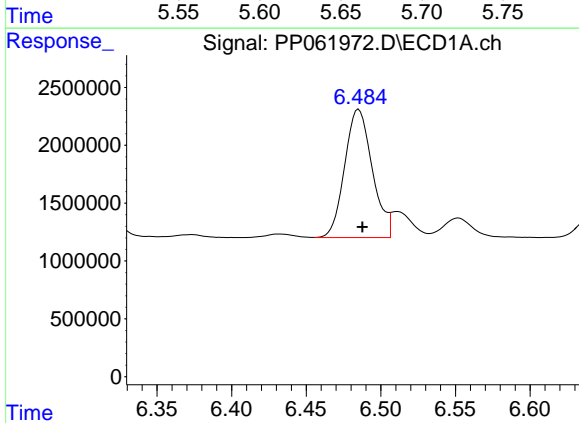
R.T.: 6.552 min
 Delta R.T.: -0.001 min
 Response: 2370221
 Conc: 45.87 ng/ml

Instrument :
 ECD_P
 ClientSampleId :



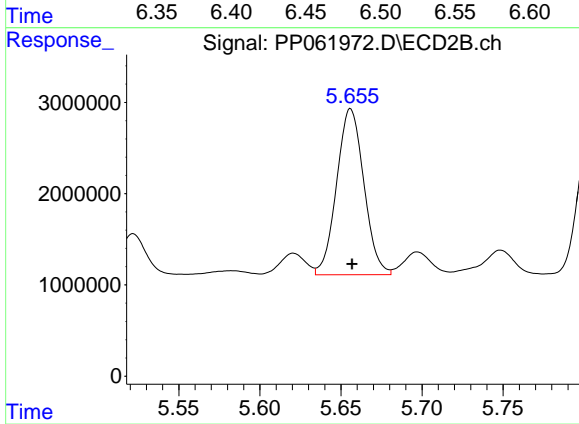
#25 AR-1248-5

R.T.: 5.656 min
 Delta R.T.: 0.000 min
 Response: 21290520
 Conc: 213.05 ng/ml



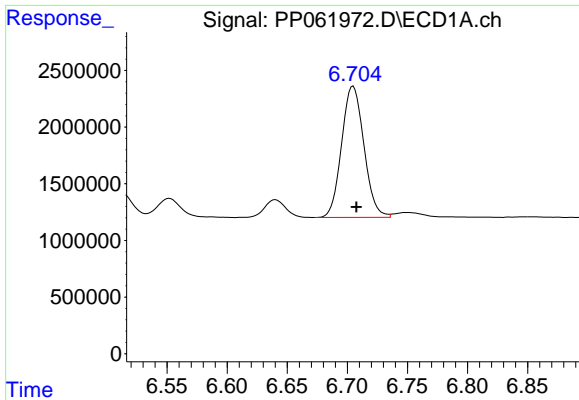
#26 AR-1254-1

R.T.: 6.485 min
 Delta R.T.: -0.003 min
 Response: 14266577
 Conc: 254.29 ng/ml



#26 AR-1254-1

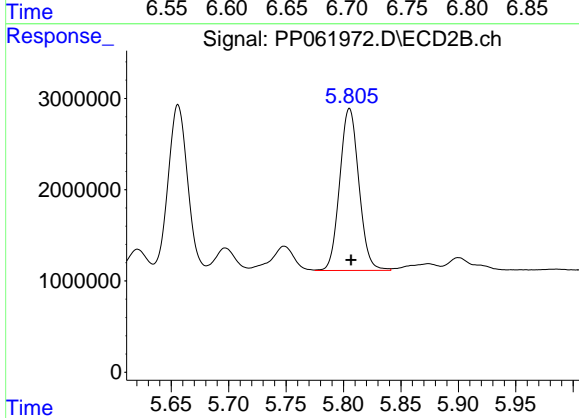
R.T.: 5.656 min
 Delta R.T.: -0.001 min
 Response: 21290520
 Conc: 195.53 ng/ml



#27 AR-1254-2

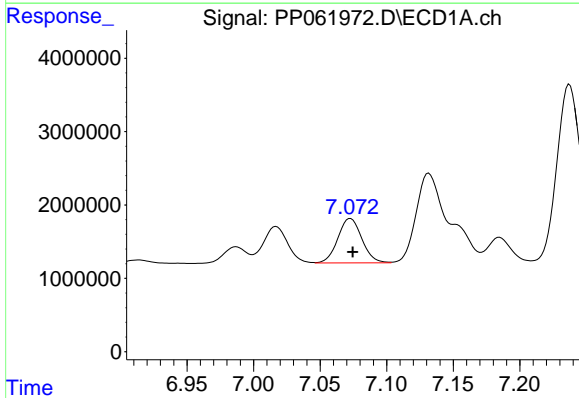
R.T.: 6.705 min
 Delta R.T.: -0.003 min
 Response: 14927428
 Conc: 179.03 ng/ml

Instrument :
 ECD_P
 ClientSampleId :



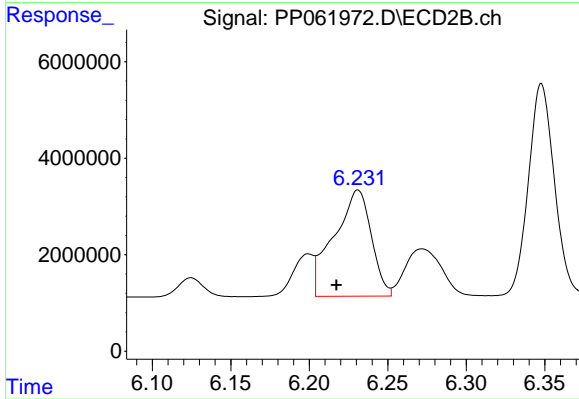
#27 AR-1254-2

R.T.: 5.805 min
 Delta R.T.: -0.001 min
 Response: 20667366
 Conc: 205.93 ng/ml



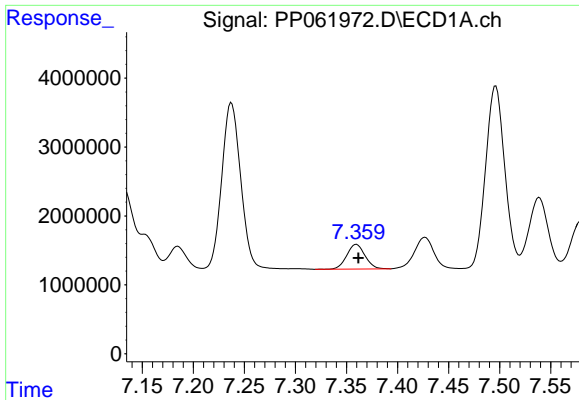
#28 AR-1254-3

R.T.: 7.073 min
 Delta R.T.: -0.002 min
 Response: 7605998
 Conc: 91.94 ng/ml



#28 AR-1254-3

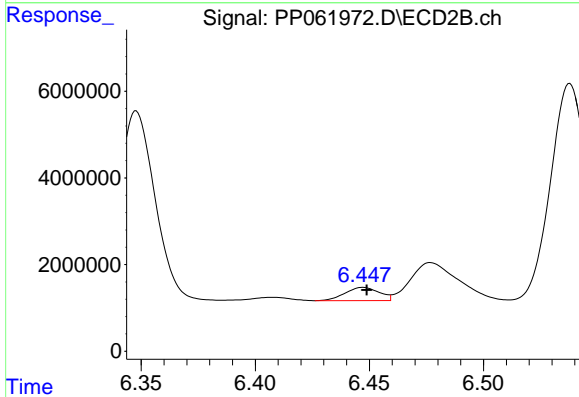
R.T.: 6.231 min
 Delta R.T.: 0.014 min
 Response: 36454303
 Conc: 233.34 ng/ml



#29 AR-1254-4

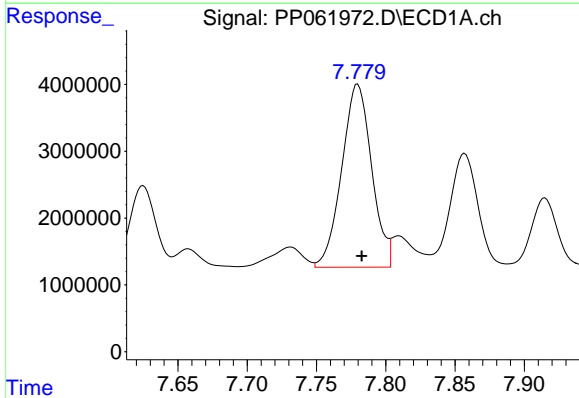
R.T.: 7.360 min
 Delta R.T.: -0.002 min
 Response: 4507156
 Conc: 85.95 ng/ml

Instrument :
 ECD_P
 ClientSampleId :



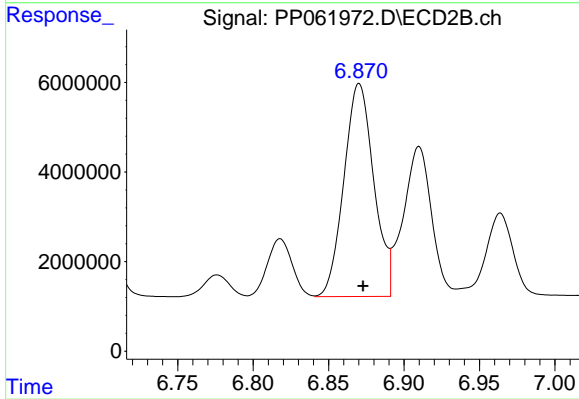
#29 AR-1254-4

R.T.: 6.447 min
 Delta R.T.: -0.002 min
 Response: 3182761
 Conc: 40.04 ng/ml



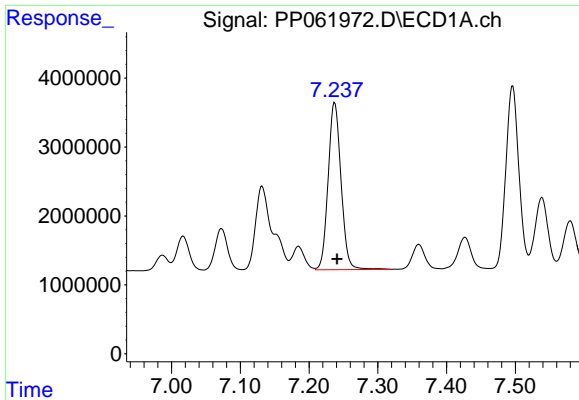
#30 AR-1254-5

R.T.: 7.780 min
 Delta R.T.: -0.003 min
 Response: 41112926
 Conc: 645.41 ng/ml



#30 AR-1254-5

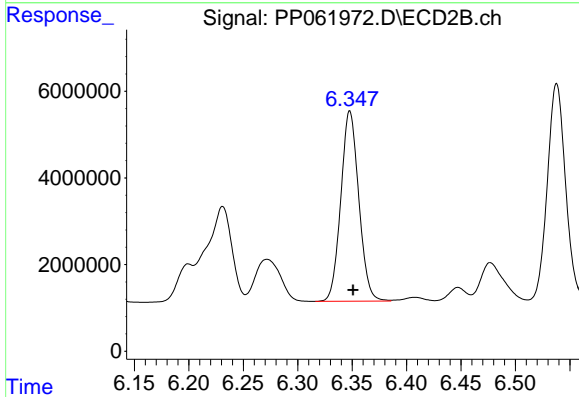
R.T.: 6.870 min
 Delta R.T.: -0.003 min
 Response: 65687370
 Conc: 465.45 ng/ml



#31 AR-1260-1

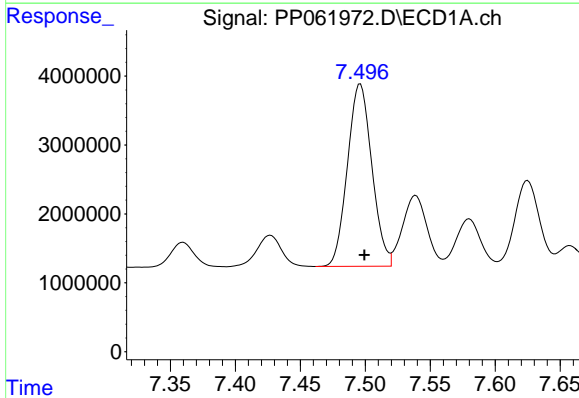
R.T.: 7.237 min
Delta R.T.: -0.004 min
Response: 31676953
Conc: 463.73 ng/ml

Instrument :
ECD_P
ClientSampleId :



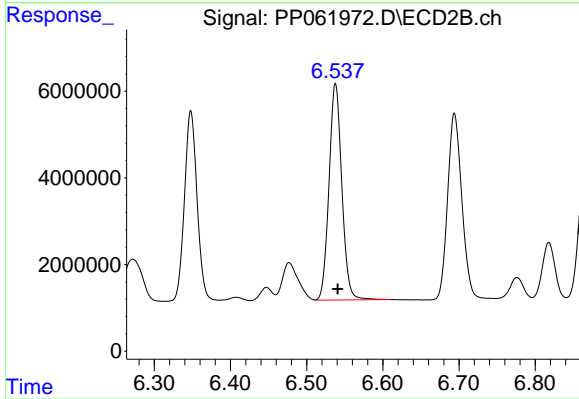
#31 AR-1260-1

R.T.: 6.348 min
Delta R.T.: -0.003 min
Response: 50510170
Conc: 434.02 ng/ml



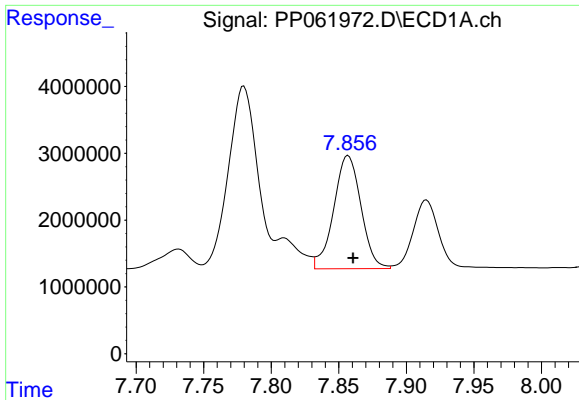
#32 AR-1260-2

R.T.: 7.496 min
Delta R.T.: -0.003 min
Response: 34570638
Conc: 458.98 ng/ml



#32 AR-1260-2

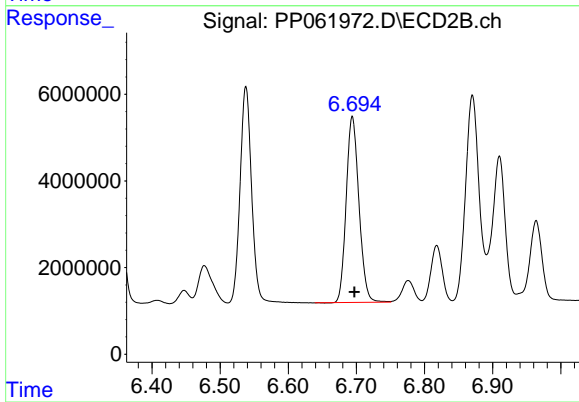
R.T.: 6.538 min
Delta R.T.: -0.003 min
Response: 58592776
Conc: 430.03 ng/ml



#33 AR-1260-3

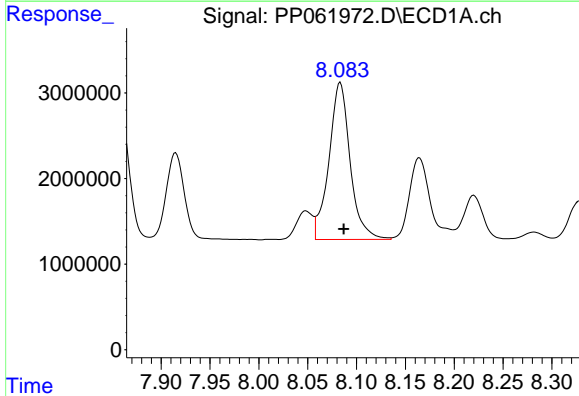
R.T.: 7.857 min
 Delta R.T.: -0.004 min
 Response: 23818989
 Conc: 459.77 ng/ml

Instrument :
 ECD_P
 ClientSampleId :



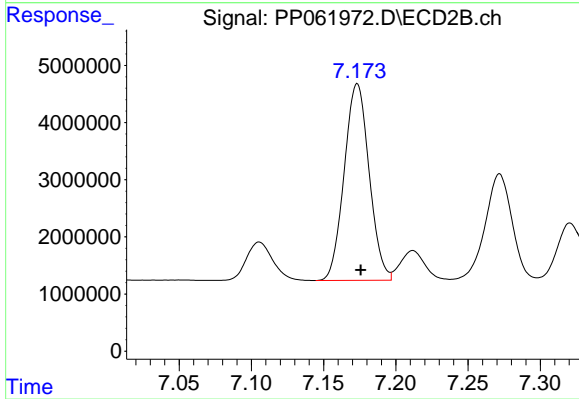
#33 AR-1260-3

R.T.: 6.694 min
 Delta R.T.: -0.003 min
 Response: 55840361
 Conc: 426.78 ng/ml



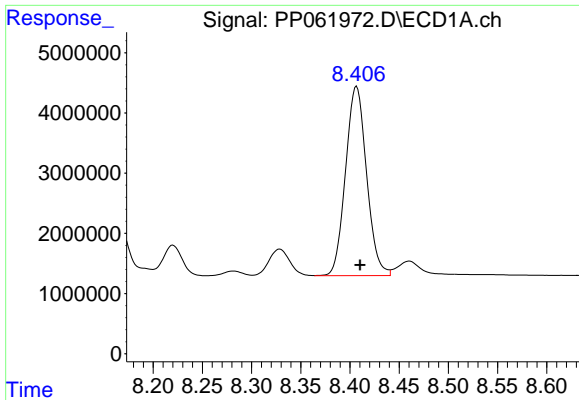
#34 AR-1260-4

R.T.: 8.083 min
 Delta R.T.: -0.003 min
 Response: 27792688
 Conc: 455.42 ng/ml



#34 AR-1260-4

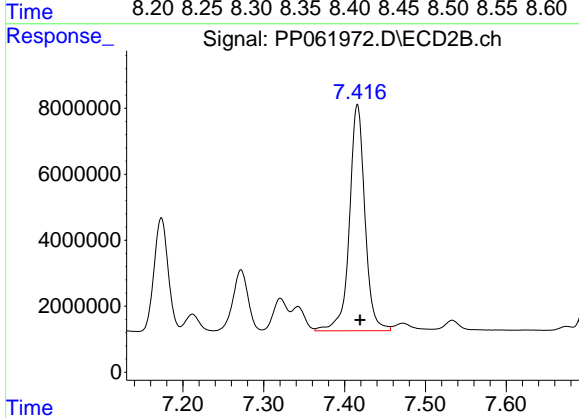
R.T.: 7.173 min
 Delta R.T.: -0.002 min
 Response: 41384858
 Conc: 419.65 ng/ml



#35 AR-1260-5

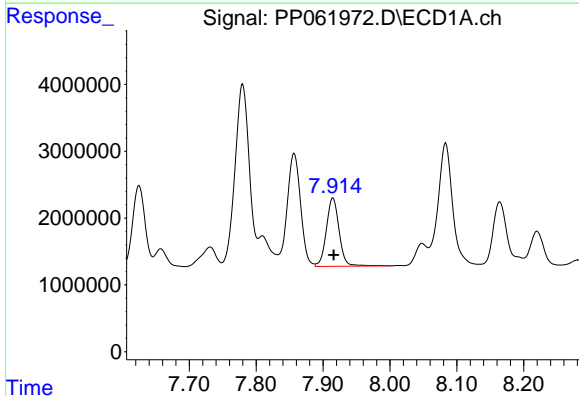
R.T.: 8.407 min
 Delta R.T.: -0.004 min
 Response: 46730099
 Conc: 466.00 ng/ml

Instrument :
 ECD_P
 ClientSampleId :



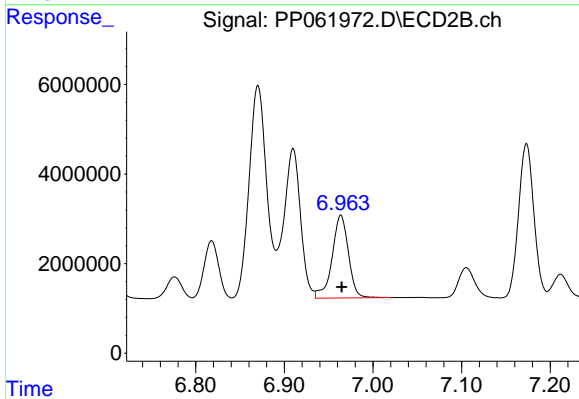
#35 AR-1260-5

R.T.: 7.416 min
 Delta R.T.: -0.003 min
 Response: 91281615
 Conc: 426.30 ng/ml



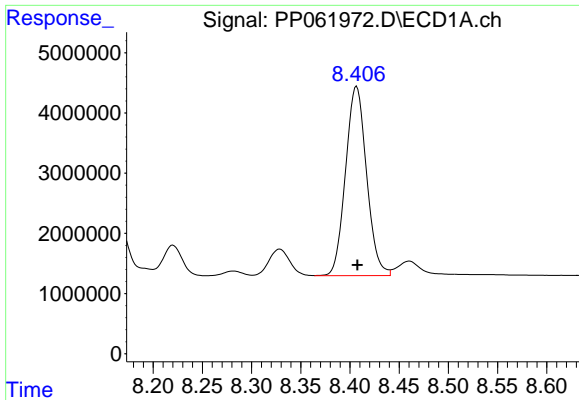
#36 AR-1262-1

R.T.: 7.915 min
 Delta R.T.: -0.001 min
 Response: 13638353
 Conc: 385.41 ng/ml



#36 AR-1262-1

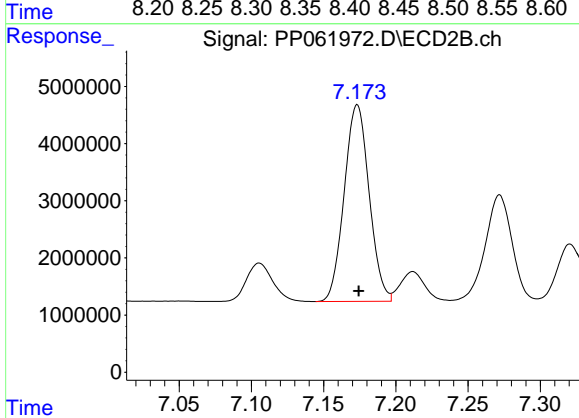
R.T.: 6.964 min
 Delta R.T.: 0.000 min
 Response: 23709117
 Conc: 373.22 ng/ml



#37 AR-1262-2

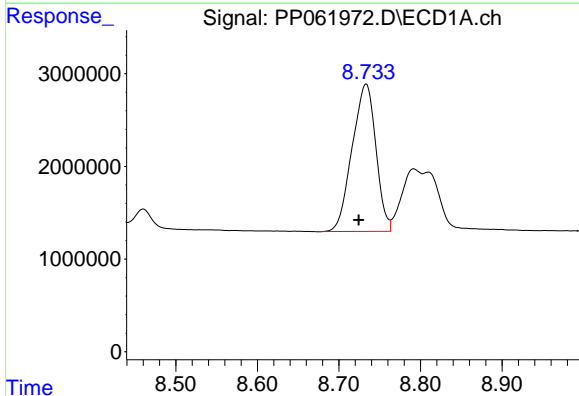
R.T.: 8.407 min
 Delta R.T.: 0.000 min
 Response: 46730099
 Conc: 394.09 ng/ml

Instrument :
 ECD_P
 ClientSampleId :



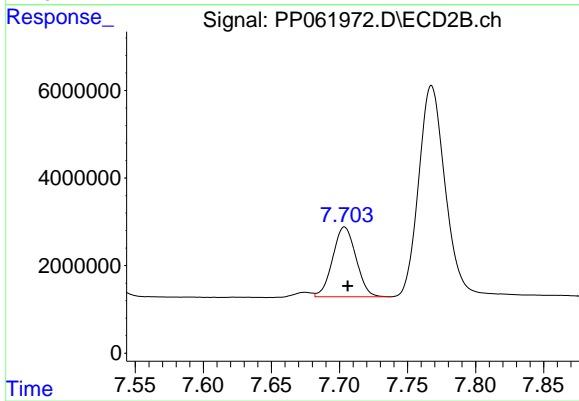
#37 AR-1262-2

R.T.: 7.173 min
 Delta R.T.: 0.000 min
 Response: 41384858
 Conc: 306.38 ng/ml



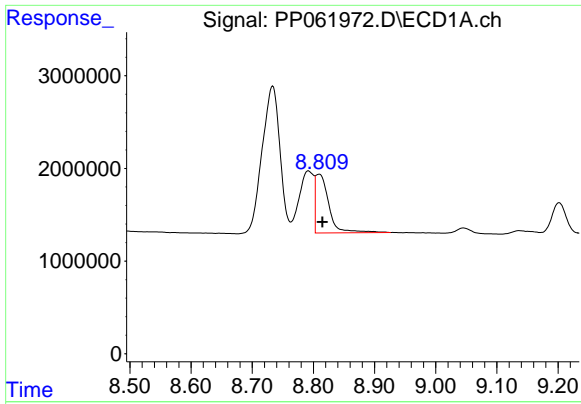
#38 AR-1262-3

R.T.: 8.734 min
 Delta R.T.: 0.009 min
 Response: 32133768
 Conc: 366.87 ng/ml



#38 AR-1262-3

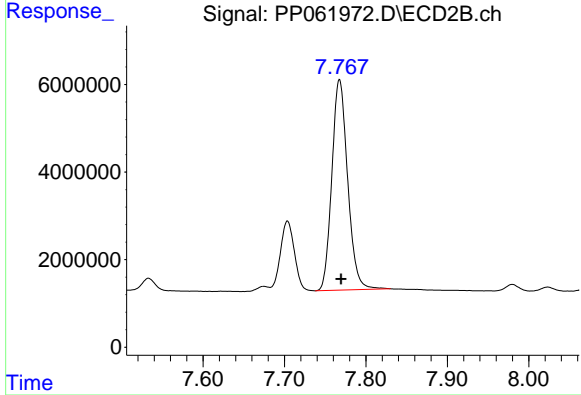
R.T.: 7.704 min
 Delta R.T.: -0.002 min
 Response: 19057602
 Conc: 182.15 ng/ml



#39 AR-1262-4

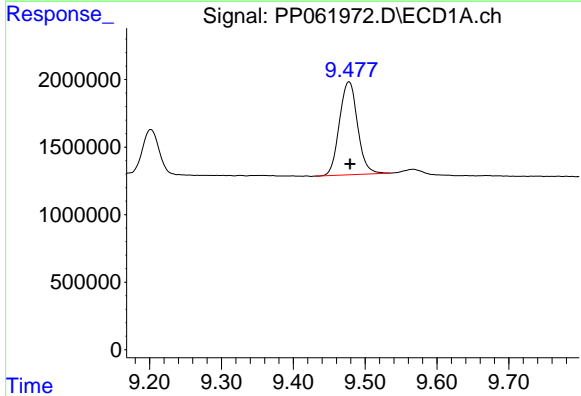
R.T.: 8.810 min
 Delta R.T.: -0.005 min
 Response: 9671515
 Conc: 128.43 ng/ml

Instrument :
 ECD_P
 ClientSampleId :



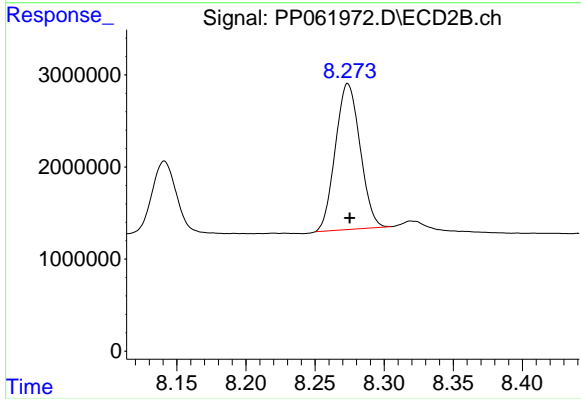
#39 AR-1262-4

R.T.: 7.768 min
 Delta R.T.: -0.002 min
 Response: 64887335
 Conc: 359.99 ng/ml



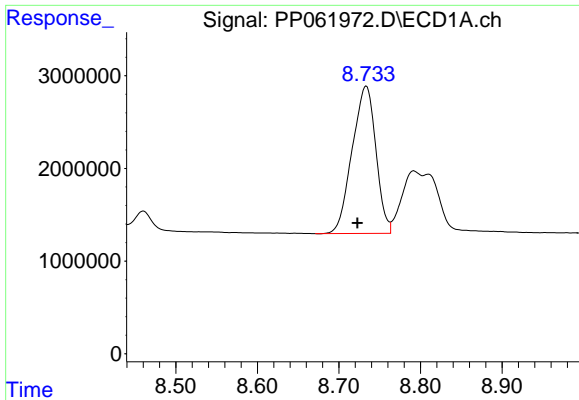
#40 AR-1262-5

R.T.: 9.478 min
 Delta R.T.: -0.001 min
 Response: 12082948
 Conc: 280.96 ng/ml



#40 AR-1262-5

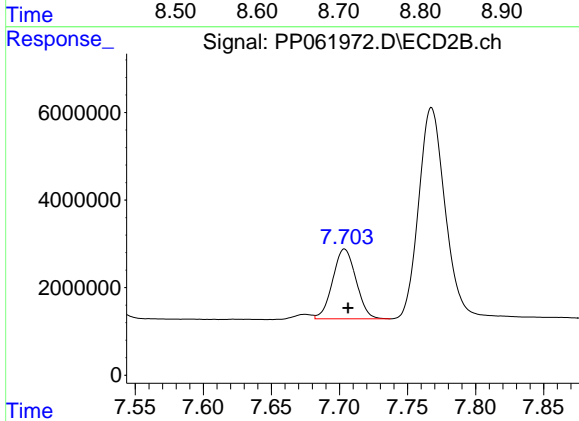
R.T.: 8.274 min
 Delta R.T.: -0.001 min
 Response: 19703512
 Conc: 257.93 ng/ml



#41 AR-1268-1

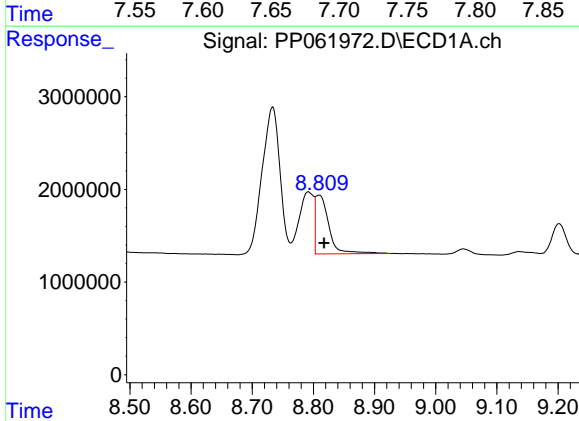
R.T.: 8.734 min
 Delta R.T.: 0.011 min
 Response: 32133768
 Conc: 213.40 ng/ml

Instrument :
 ECD_P
 ClientSampleId :



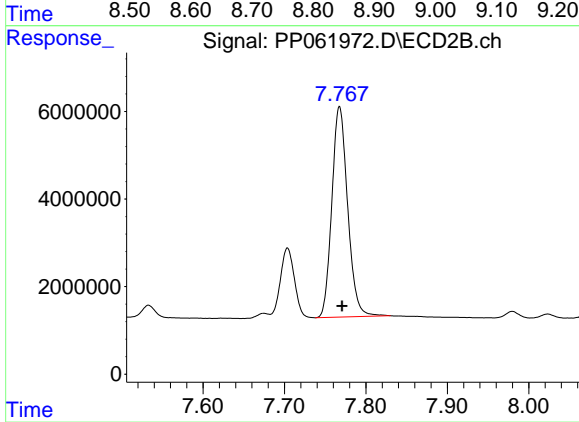
#41 AR-1268-1

R.T.: 7.704 min
 Delta R.T.: -0.002 min
 Response: 19057602
 Conc: 63.54 ng/ml



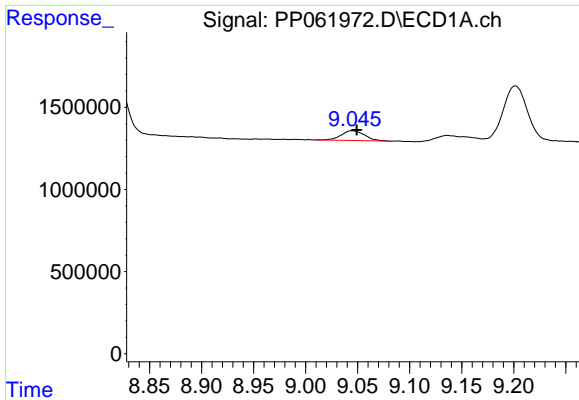
#42 AR-1268-2

R.T.: 8.810 min
 Delta R.T.: -0.007 min
 Response: 9671515
 Conc: 68.84 ng/ml



#42 AR-1268-2

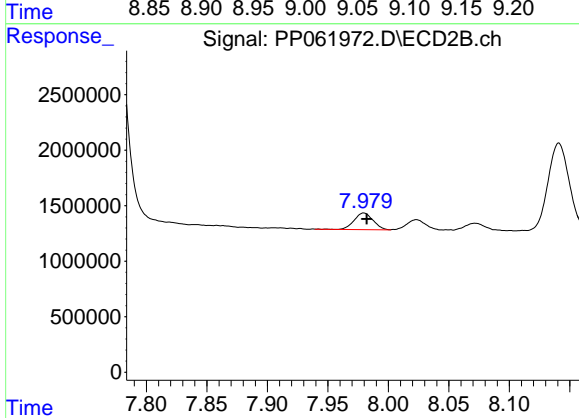
R.T.: 7.768 min
 Delta R.T.: -0.003 min
 Response: 64887335
 Conc: 244.52 ng/ml



#43 AR-1268-3

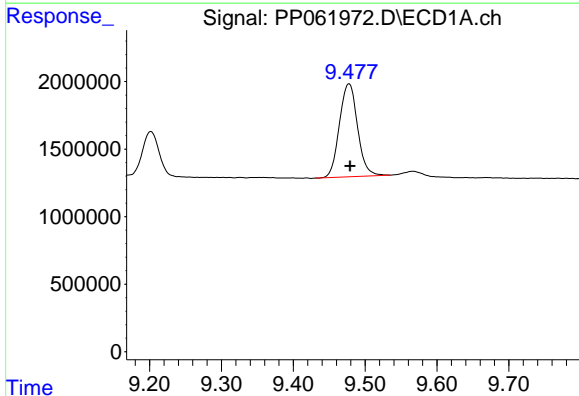
R.T.: 9.045 min
 Delta R.T.: -0.004 min
 Response: 950952
 Conc: 8.02 ng/ml

Instrument :
 ECD_P
 ClientSampleId :



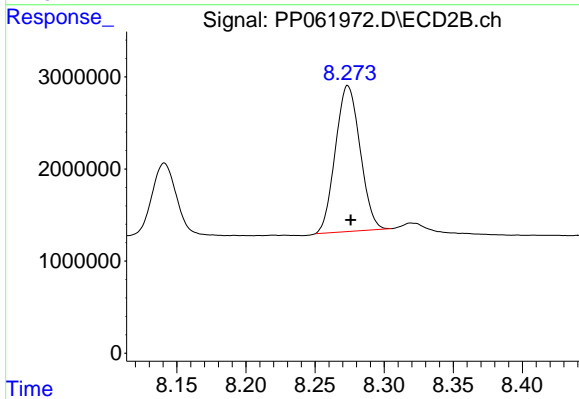
#43 AR-1268-3

R.T.: 7.980 min
 Delta R.T.: -0.002 min
 Response: 1629156
 Conc: 6.71 ng/ml



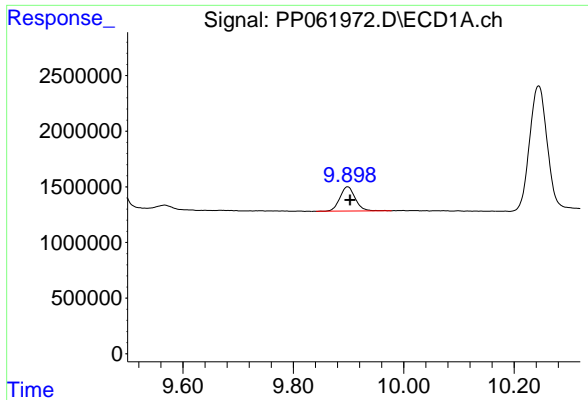
#44 AR-1268-4

R.T.: 9.478 min
 Delta R.T.: -0.001 min
 Response: 12082948
 Conc: 267.64 ng/ml



#44 AR-1268-4

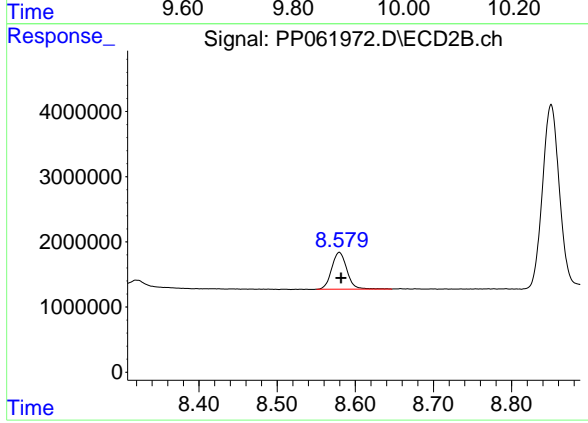
R.T.: 8.274 min
 Delta R.T.: -0.002 min
 Response: 19703512
 Conc: 228.22 ng/ml



#45 AR-1268-5

R.T.: 9.898 min
Delta R.T.: -0.004 min
Response: 4204533
Conc: 12.83 ng/ml

Instrument :
ECD_P
ClientSampleId :



#45 AR-1268-5

R.T.: 8.580 min
Delta R.T.: -0.002 min
Response: 7613876
Conc: 11.01 ng/ml