

Data Path : Z:\pestpcbsrv\HPCHEM1\ECD_P\Data\PP112923\
 Data File : PP061969.D
 Signal(s) : Signal #1: ECD1A.ch Signal #2: ECD2B.ch
 Acq On : 29 Nov 2023 13:38
 Operator : YP\AJ
 Sample : AR1254CCC500
 Misc :
 ALS Vial : 6 Sample Multiplier: 1

Instrument :
 ECD_P
ClientSampleId :
 AR1254CCC500

Integration File signal 1: autoint1.e
 Integration File signal 2: autoint2.e
 Quant Time: Nov 29 15:14:28 2023
 Quant Method : Z:\pestpcbsrv\HPCHEM1\ECD_P\methods\PP112723.M
 Quant Title : GC EXTRACTABLES
 QLast Update : Tue Nov 28 04:28:00 2023
 Response via : Initial Calibration
 Integrator: ChemStation

Volume Inj. : 2 µl
 Signal #1 Phase : ZB-MR1 Signal #2 Phase: ZB-MR2
 Signal #1 Info : 30Mx0.32mmx 0.50µ Signal #2 Info : 30M x 0.32mm x 0.25µm

Compound	RT#1	RT#2	Resp#1	Resp#2	ng/ml	ng/ml

System Monitoring Compounds						
1) SA Tetrachlo...	4.453	3.725	66380899	91286166	50.424	50.732
2) SA Decachlor...	10.245	8.850	49383182	87970637	47.851	42.623
Target Compounds						
26) L6 AR-1254-1	6.486	5.656	26945117	50899389	480.281	467.465
27) L6 AR-1254-2	6.706	5.806	39293671	46446217	471.258	462.785
28) L6 AR-1254-3	7.072	6.216	39414813	71796924	476.431	459.573
29) L6 AR-1254-4	7.360	6.447	26630627	38754842	507.824	487.595
30) L6 AR-1254-5	7.780	6.871	31252839	64372134	490.625	456.128

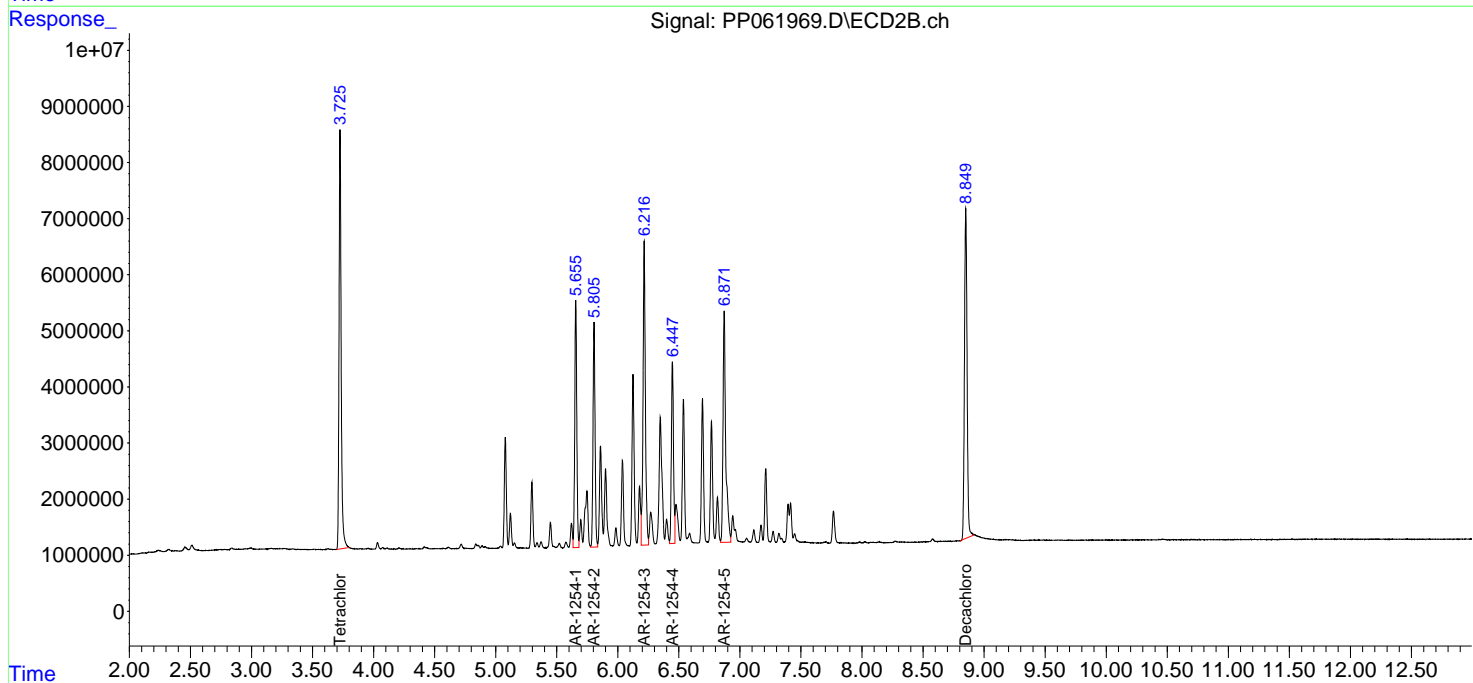
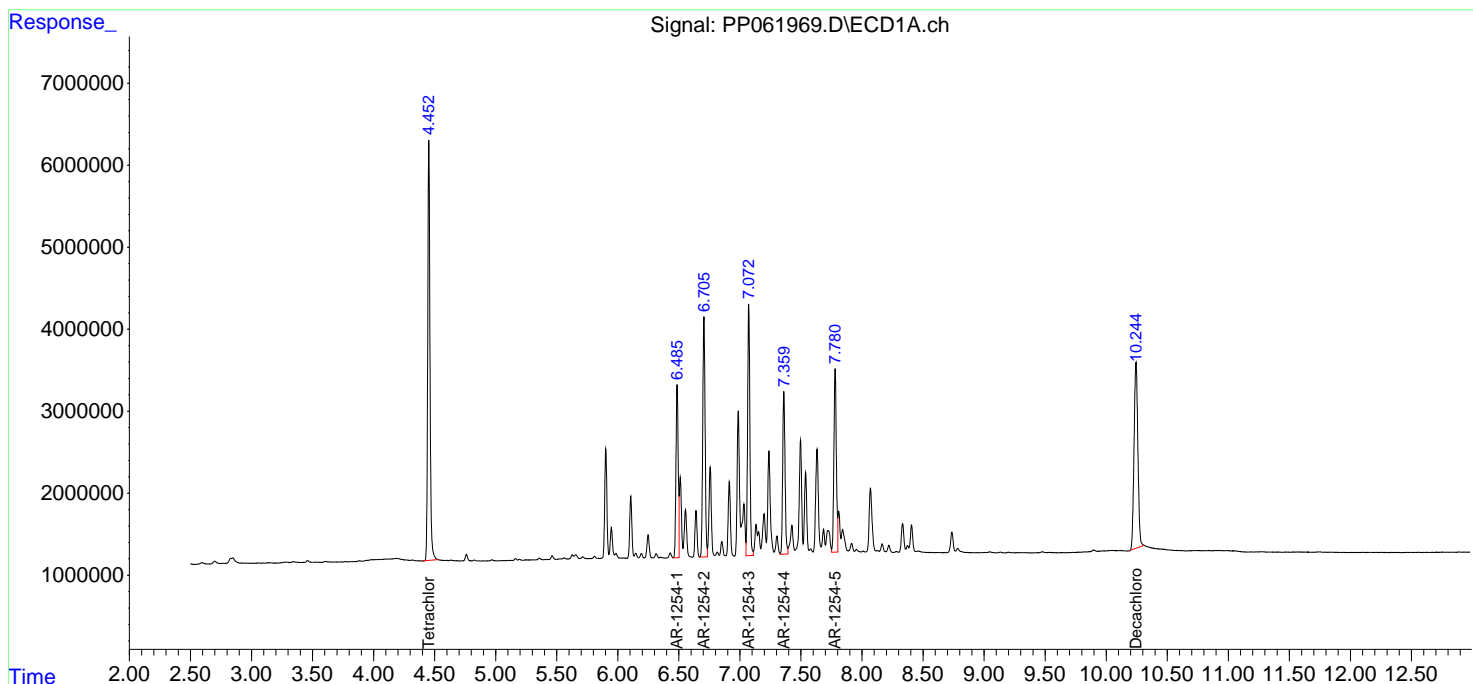
(f)=RT Delta > 1/2 Window (#)=Amounts differ by > 25% (m)=manual int.

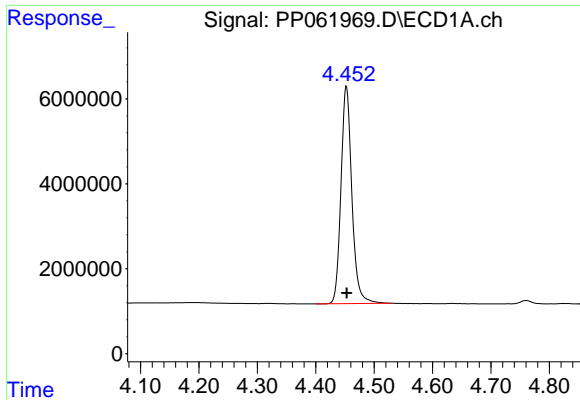
Data Path : Z:\pestpcbsrv\HPCHEM1\ECD_P\Data\PP112923\
 Data File : PP061969.D
 Signal(s) : Signal #1: ECD1A.ch Signal #2: ECD2B.ch
 Acq On : 29 Nov 2023 13:38
 Operator : YP\AJ
 Sample : AR1254CCC500
 Misc :
 ALS Vial : 6 Sample Multiplier: 1

Instrument :
 ECD_P
 ClientSampleId :
 AR1254CCC500

Integration File signal 1: autoint1.e
 Integration File signal 2: autoint2.e
 Quant Time: Nov 29 15:14:28 2023
 Quant Method : Z:\pestpcbsrv\HPCHEM1\ECD_P\methods\PP112723.M
 Quant Title : GC EXTRACTABLES
 QLast Update : Tue Nov 28 04:28:00 2023
 Response via : Initial Calibration
 Integrator: ChemStation

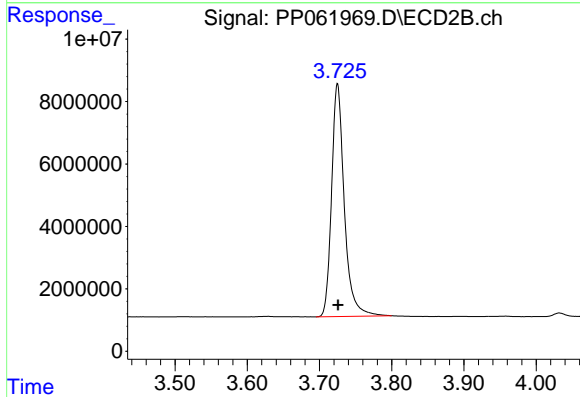
Volume Inj. : 2 µl
 Signal #1 Phase : ZB-MR1 Signal #2 Phase: ZB-MR2
 Signal #1 Info : 30Mx0.32mmx 0.50µ Signal #2 Info : 30M x 0.32mm x 0.25µm



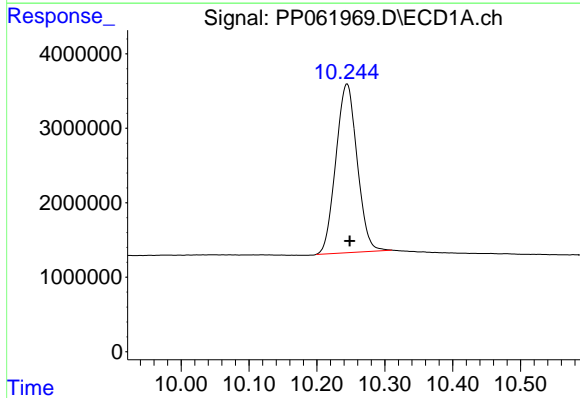


#1 Tetrachloro-m-xylene
 R.T.: 4.453 min
 Delta R.T.: 0.000 min
 Response: 66380899
 Conc: 50.42 ng/ml

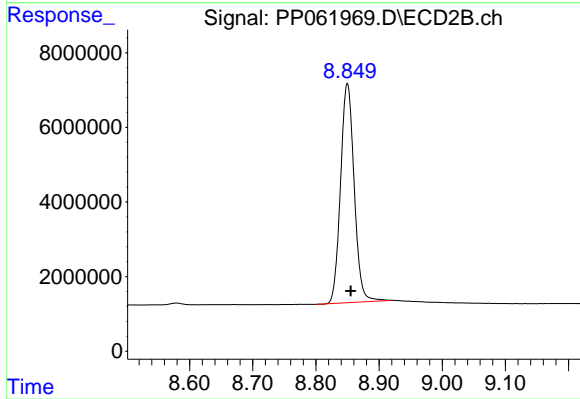
Instrument :
 ECD_P
 ClientSampleId :
 AR1254CCC500



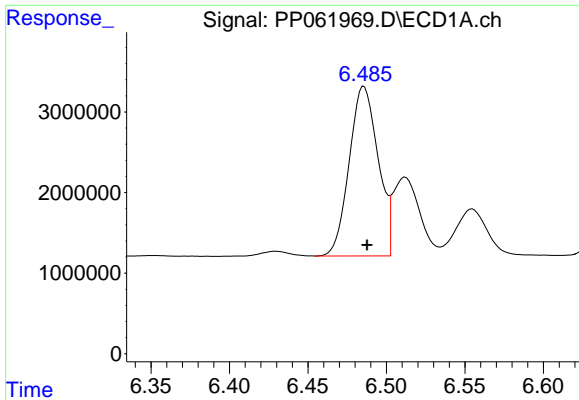
#1 Tetrachloro-m-xylene
 R.T.: 3.725 min
 Delta R.T.: 0.000 min
 Response: 91286166
 Conc: 50.73 ng/ml



#2 Decachlorobiphenyl
 R.T.: 10.245 min
 Delta R.T.: -0.004 min
 Response: 49383182
 Conc: 47.85 ng/ml



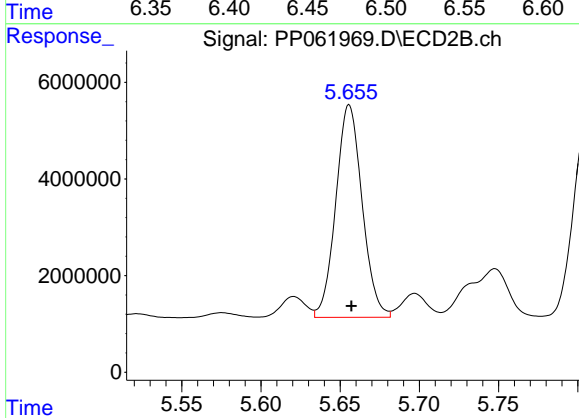
#2 Decachlorobiphenyl
 R.T.: 8.850 min
 Delta R.T.: -0.005 min
 Response: 87970637
 Conc: 42.62 ng/ml



#26 AR-1254-1

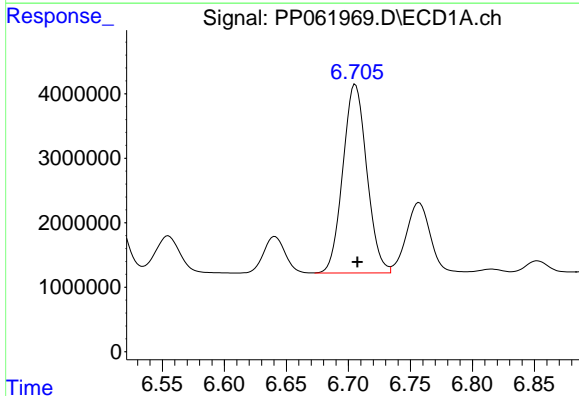
R.T.: 6.486 min
 Delta R.T.: -0.002 min
 Response: 26945117
 Conc: 480.28 ng/ml

Instrument :
 ECD_P
 ClientSampleId :
 AR1254CCC500



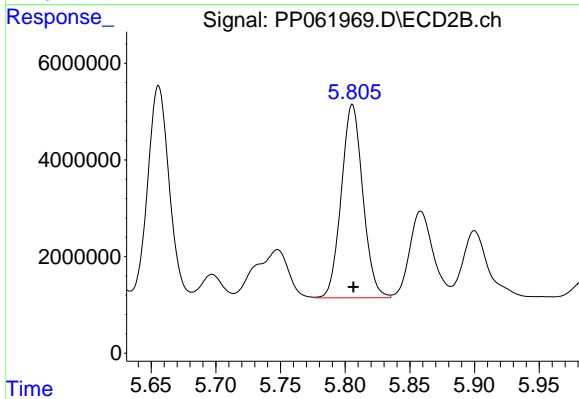
#26 AR-1254-1

R.T.: 5.656 min
 Delta R.T.: -0.001 min
 Response: 50899389
 Conc: 467.46 ng/ml



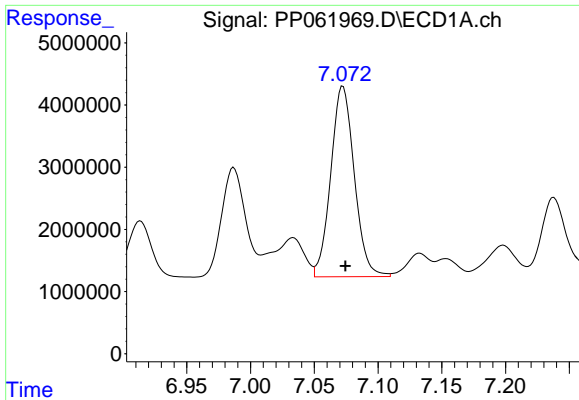
#27 AR-1254-2

R.T.: 6.706 min
 Delta R.T.: -0.002 min
 Response: 39293671
 Conc: 471.26 ng/ml



#27 AR-1254-2

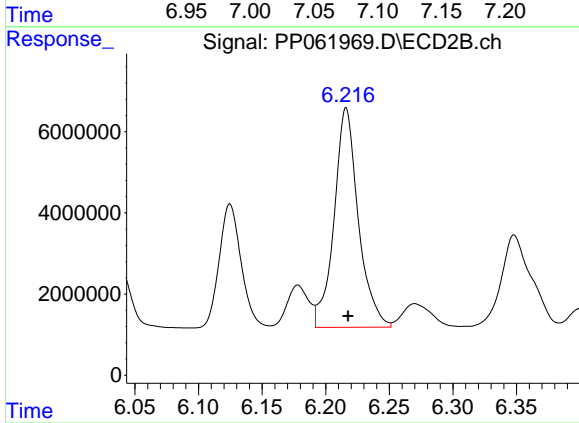
R.T.: 5.806 min
 Delta R.T.: 0.000 min
 Response: 46446217
 Conc: 462.78 ng/ml



#28 AR-1254-3

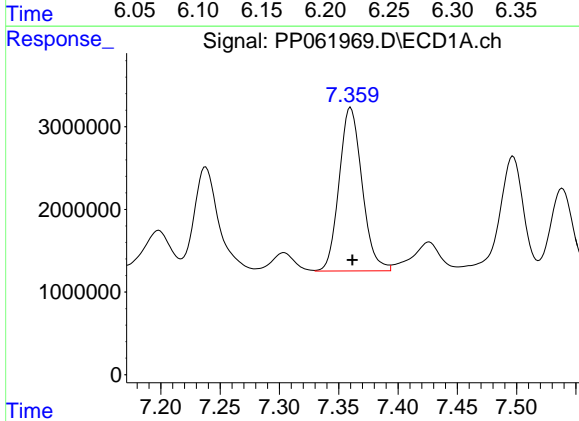
R.T.: 7.072 min
Delta R.T.: -0.002 min
Response: 39414813
Conc: 476.43 ng/ml

Instrument :
ECD_P
ClientSampleId :
AR1254CCC500



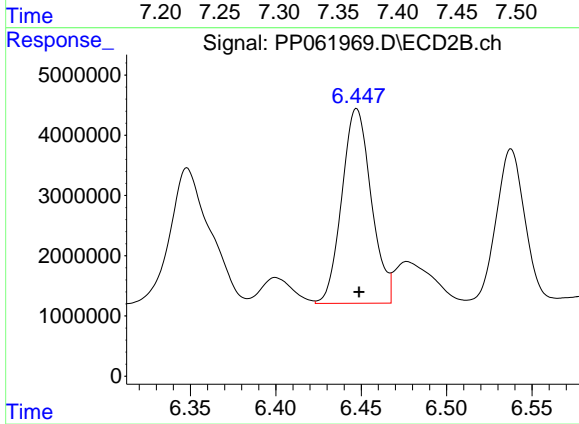
#28 AR-1254-3

R.T.: 6.216 min
Delta R.T.: -0.001 min
Response: 71796924
Conc: 459.57 ng/ml



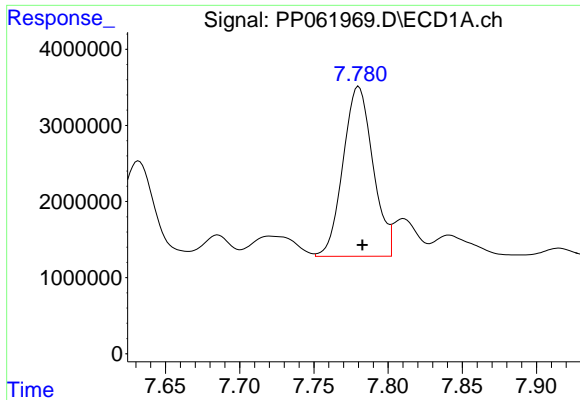
#29 AR-1254-4

R.T.: 7.360 min
Delta R.T.: -0.002 min
Response: 26630627
Conc: 507.82 ng/ml



#29 AR-1254-4

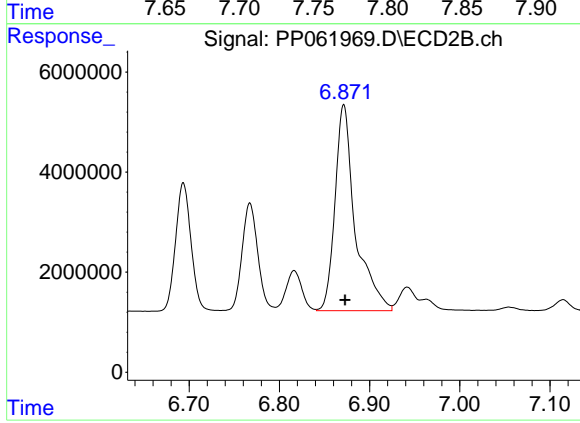
R.T.: 6.447 min
Delta R.T.: -0.001 min
Response: 38754842
Conc: 487.60 ng/ml



#30 AR-1254-5

R.T.: 7.780 min
Delta R.T.: -0.002 min
Response: 31252839
Conc: 490.63 ng/ml

Instrument :
ECD_P
ClientSampleId :
AR1254CCC500



#30 AR-1254-5

R.T.: 6.871 min
Delta R.T.: -0.002 min
Response: 64372134
Conc: 456.13 ng/ml