

Data Path : Z:\pestpcbsrv\HPCHEM1\ECD_P\Data\PP113023\
 Data File : PP062017.D
 Signal(s) : Signal #1: ECD1A.ch Signal #2: ECD2B.ch
 Acq On : 30 Nov 2023 17:19
 Operator : YP\AJ
 Sample : 05575-12
 Misc :
 ALS Vial : 20 Sample Multiplier: 1

Instrument :
 ECD_P
 ClientSampleId :
 49

Integration File signal 1: autoint1.e
 Integration File signal 2: autoint2.e
 Quant Time: Dec 01 00:11:00 2023
 Quant Method : Z:\pestpcbsrv\HPCHEM1\ECD_P\methods\PP112723.M
 Quant Title : GC EXTRACTABLES
 QLast Update : Tue Nov 28 04:28:00 2023
 Response via : Initial Calibration
 Integrator: ChemStation

Volume Inj. : 2 µl
 Signal #1 Phase : ZB-MR2 Signal #2 Phase: ZB-MR2
 Signal #1 Info : 30Mx0.32mmx 0.50µ Signal #2 Info : 30M x 0.32mm x 0.25µm

Compound	RT#1	RT#2	Resp#1	Resp#2	ng/ml	ng/ml

System Monitoring Compounds						
1) SA Tetrachlo...	4.452	3.724	24261725	30776328	18.430	17.104
2) SA Decachlor...	10.241	8.847	24841381	42931201	24.071	20.801
Target Compounds						
26) L6 AR-1254-1	6.485	5.656	60022678	101.8E6	1069.869	935.252
27) L6 AR-1254-2	6.705	5.805	75187558	85852375	901.742	855.424
28) L6 AR-1254-3	7.073	6.215	52952352	93737069	640.068	600.012
29) L6 AR-1254-4	7.359	6.447	38506106	53482487	734.279	672.892
30) L6 AR-1254-5	7.780	6.870	38999278	73607962	612.233	521.571

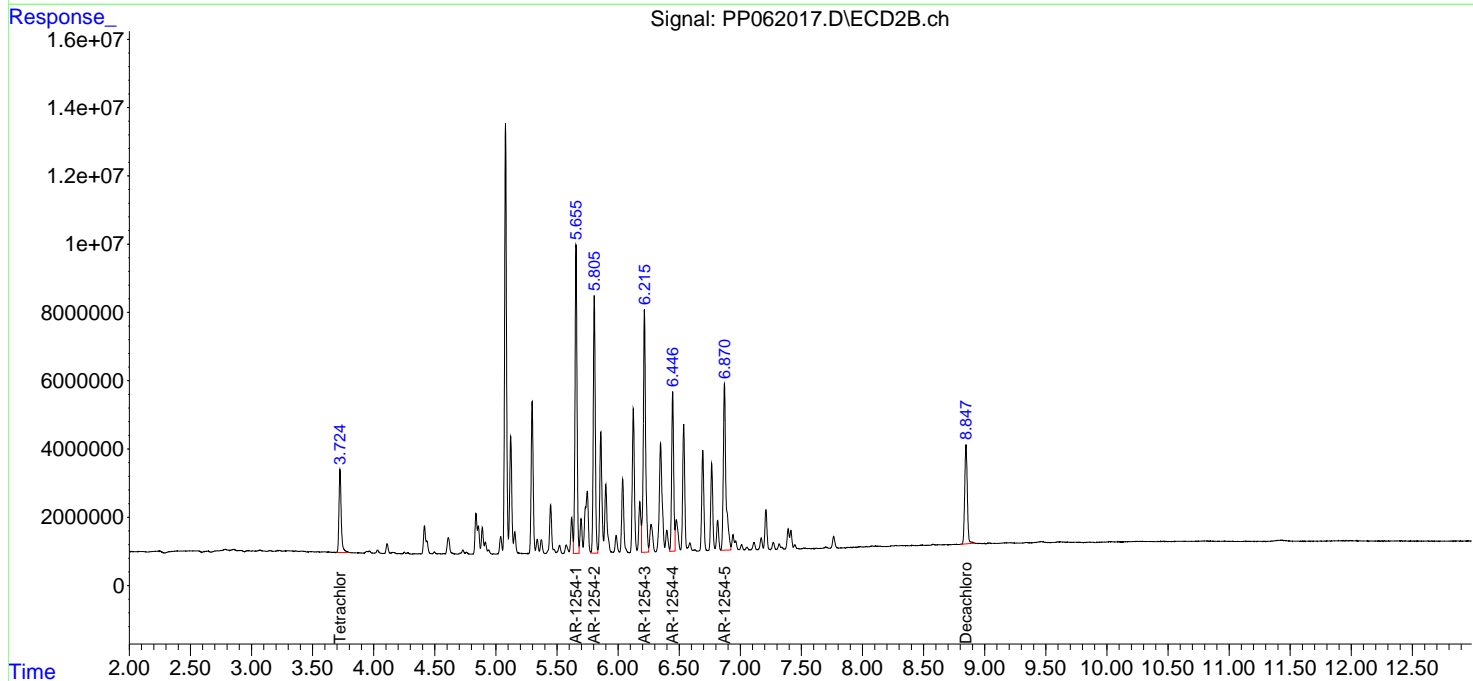
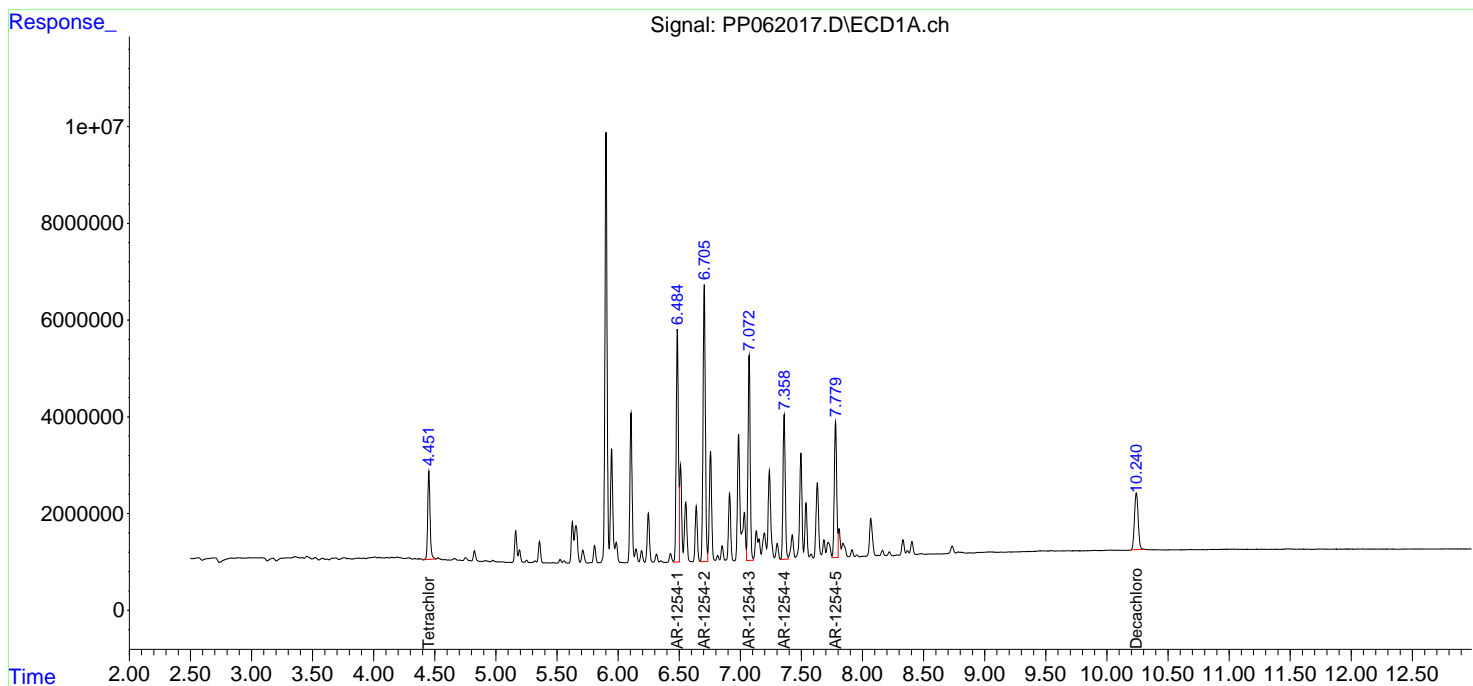
(f)=RT Delta > 1/2 Window (#)=Amounts differ by > 25% (m)=manual int.

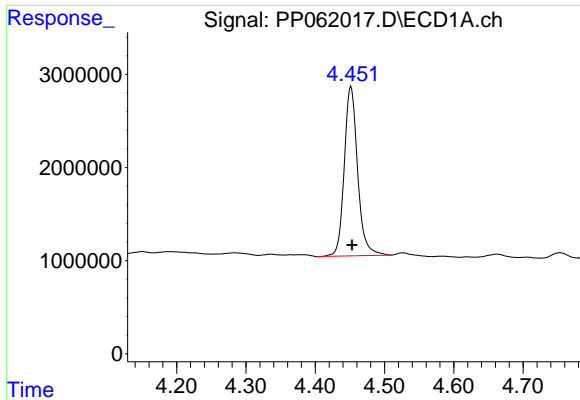
Data Path : Z:\pestpcbsrv\HPCHEM1\ECD_P\Data\PP113023\
 Data File : PP062017.D
 Signal(s) : Signal #1: ECD1A.ch Signal #2: ECD2B.ch
 Acq On : 30 Nov 2023 17:19
 Operator : YP\AJ
 Sample : 05575-12
 Misc :
 ALS Vial : 20 Sample Multiplier: 1

Instrument :
 ECD_P
 ClientSampleId :
 49

Integration File signal 1: autoint1.e
 Integration File signal 2: autoint2.e
 Quant Time: Dec 01 00:11:00 2023
 Quant Method : Z:\pestpcbsrv\HPCHEM1\ECD_P\methods\PP112723.M
 Quant Title : GC EXTRACTABLES
 QLast Update : Tue Nov 28 04:28:00 2023
 Response via : Initial Calibration
 Integrator: ChemStation

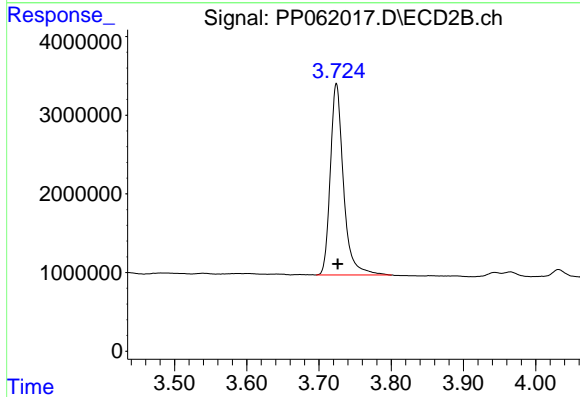
Volume Inj. : 2 µl
 Signal #1 Phase : ZB-MR1 Signal #2 Phase: ZB-MR2
 Signal #1 Info : 30Mx0.32mmx 0.50µ Signal #2 Info : 30M x 0.32mm x 0.25µm



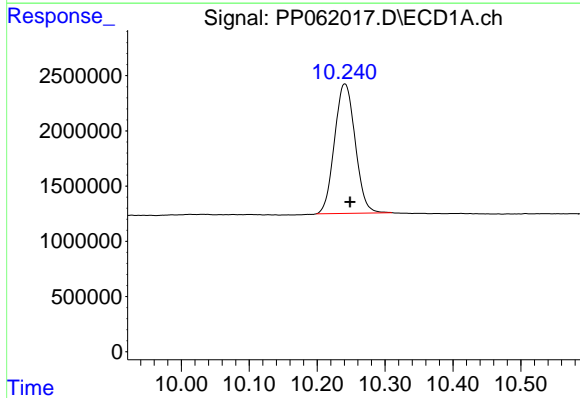


#1 Tetrachloro-m-xylene
 R.T.: 4.452 min
 Delta R.T.: -0.001 min
 Response: 24261725
 Conc: 18.43 ng/ml

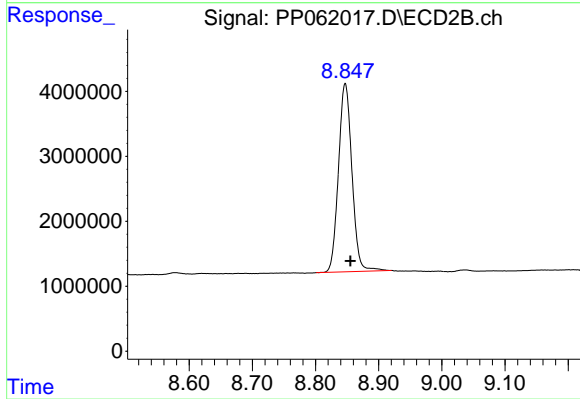
Instrument :
 ECD_P
 ClientSampleId :
 49



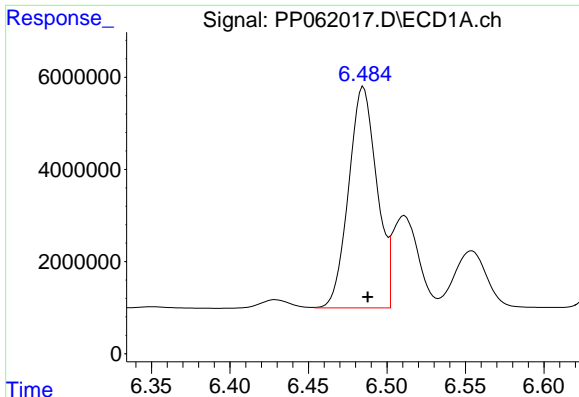
#1 Tetrachloro-m-xylene
 R.T.: 3.724 min
 Delta R.T.: -0.002 min
 Response: 30776328
 Conc: 17.10 ng/ml



#2 Decachlorobiphenyl
 R.T.: 10.241 min
 Delta R.T.: -0.007 min
 Response: 24841381
 Conc: 24.07 ng/ml



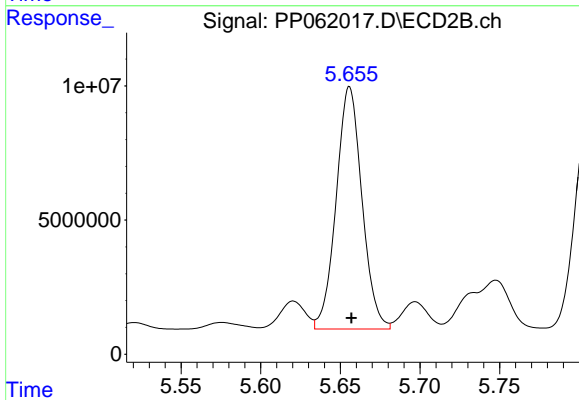
#2 Decachlorobiphenyl
 R.T.: 8.847 min
 Delta R.T.: -0.008 min
 Response: 42931201
 Conc: 20.80 ng/ml



#26 AR-1254-1

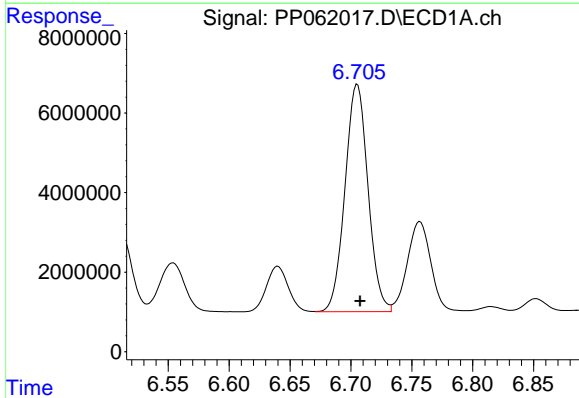
R.T.: 6.485 min
 Delta R.T.: -0.003 min
 Response: 60022678
 Conc: 1069.87 ng/ml

Instrument :
 ECD_P
 ClientSampleId :
 49



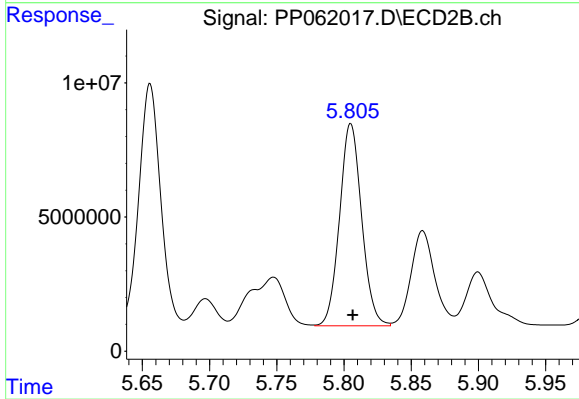
#26 AR-1254-1

R.T.: 5.656 min
 Delta R.T.: -0.001 min
 Response: 101833885
 Conc: 935.25 ng/ml



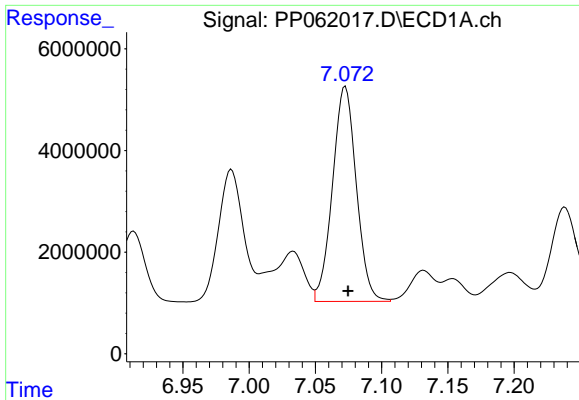
#27 AR-1254-2

R.T.: 6.705 min
 Delta R.T.: -0.002 min
 Response: 75187558
 Conc: 901.74 ng/ml



#27 AR-1254-2

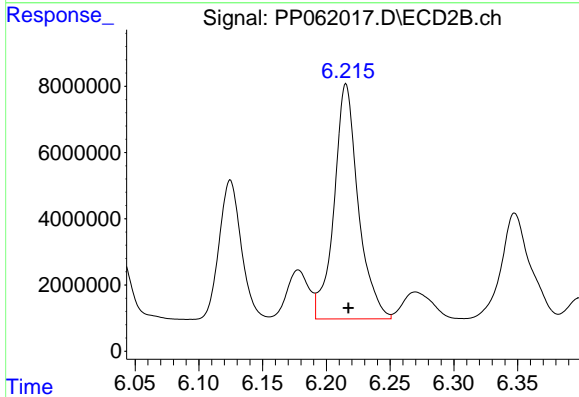
R.T.: 5.805 min
 Delta R.T.: -0.001 min
 Response: 85852375
 Conc: 855.42 ng/ml



#28 AR-1254-3

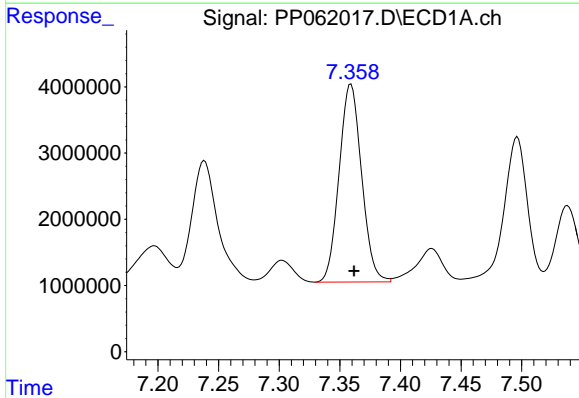
R.T.: 7.073 min
 Delta R.T.: -0.002 min
 Response: 52952352
 Conc: 640.07 ng/ml

Instrument :
 ECD_P
 ClientSampleId :
 49



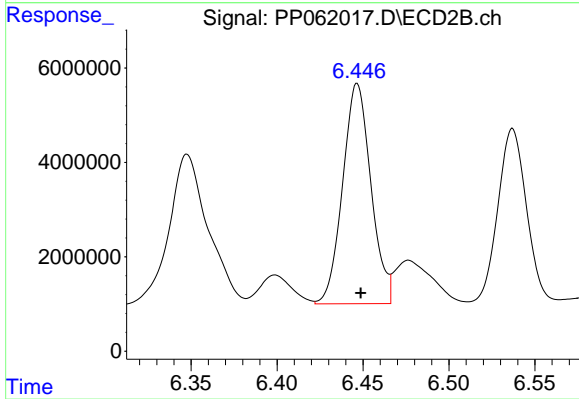
#28 AR-1254-3

R.T.: 6.215 min
 Delta R.T.: -0.002 min
 Response: 93737069
 Conc: 600.01 ng/ml



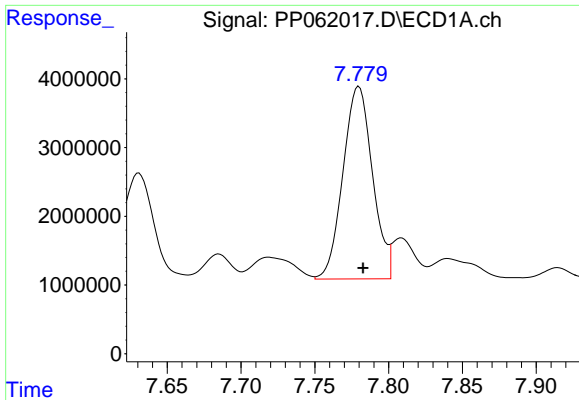
#29 AR-1254-4

R.T.: 7.359 min
 Delta R.T.: -0.003 min
 Response: 38506106
 Conc: 734.28 ng/ml



#29 AR-1254-4

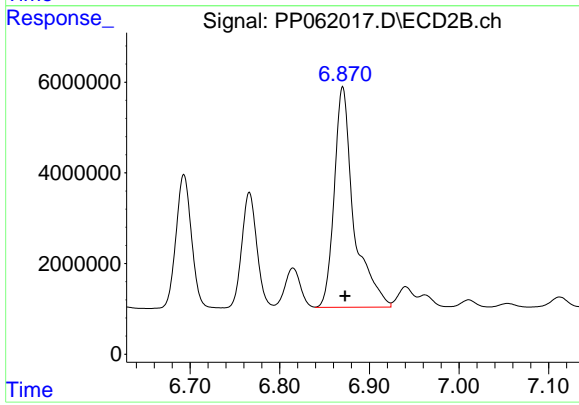
R.T.: 6.447 min
 Delta R.T.: -0.002 min
 Response: 53482487
 Conc: 672.89 ng/ml



#30 AR-1254-5

R.T.: 7.780 min
Delta R.T.: -0.003 min
Response: 38999278
Conc: 612.23 ng/ml

Instrument :
ECD_P
ClientSampleId :
49



#30 AR-1254-5

R.T.: 6.870 min
Delta R.T.: -0.003 min
Response: 73607962
Conc: 521.57 ng/ml