

Data Path : Z:\pestpcbsrv\HPCHEM1\ECD_P\Data\PP113023\
 Data File : PP062020.D
 Signal(s) : Signal #1: ECD1A.ch Signal #2: ECD2B.ch
 Acq On : 30 Nov 2023 18:08
 Operator : YP\AJ
 Sample : 05575-15
 Misc :
 ALS Vial : 23 Sample Multiplier: 1

Instrument :
 ECD_P
 ClientSampleId :
 52

Integration File signal 1: autoint1.e
 Integration File signal 2: autoint2.e
 Quant Time: Dec 01 00:11:49 2023
 Quant Method : Z:\pestpcbsrv\HPCHEM1\ECD_P\methods\PP112723.M
 Quant Title : GC EXTRACTABLES
 QLast Update : Tue Nov 28 04:28:00 2023
 Response via : Initial Calibration
 Integrator: ChemStation

Volume Inj. : 2 µl
 Signal #1 Phase : ZB-MR1 Signal #2 Phase: ZB-MR2
 Signal #1 Info : 30Mx0.32mmx 0.50µ Signal #2 Info : 30M x 0.32mm x 0.25µm

Compound	RT#1	RT#2	Resp#1	Resp#2	ng/ml	ng/ml

System Monitoring Compounds						
1) SA Tetrachlo...	4.451	3.723	25083560	31574560	19.054	17.547
2) SA Decachlor...	10.242	8.847	24531629	43976547	23.771	21.307
Target Compounds						
26) L6 AR-1254-1	6.484	5.655	29261337	49476689	521.566	454.398
27) L6 AR-1254-2	6.704	5.804	35649088	40012220	427.548	398.677
28) L6 AR-1254-3	7.072	6.214	24148733	41884094	291.901	268.101
29) L6 AR-1254-4	7.359	6.446	16546032	22582173	315.519	284.118
30) L6 AR-1254-5	7.780	6.870	14849363	27737844	233.114	196.545

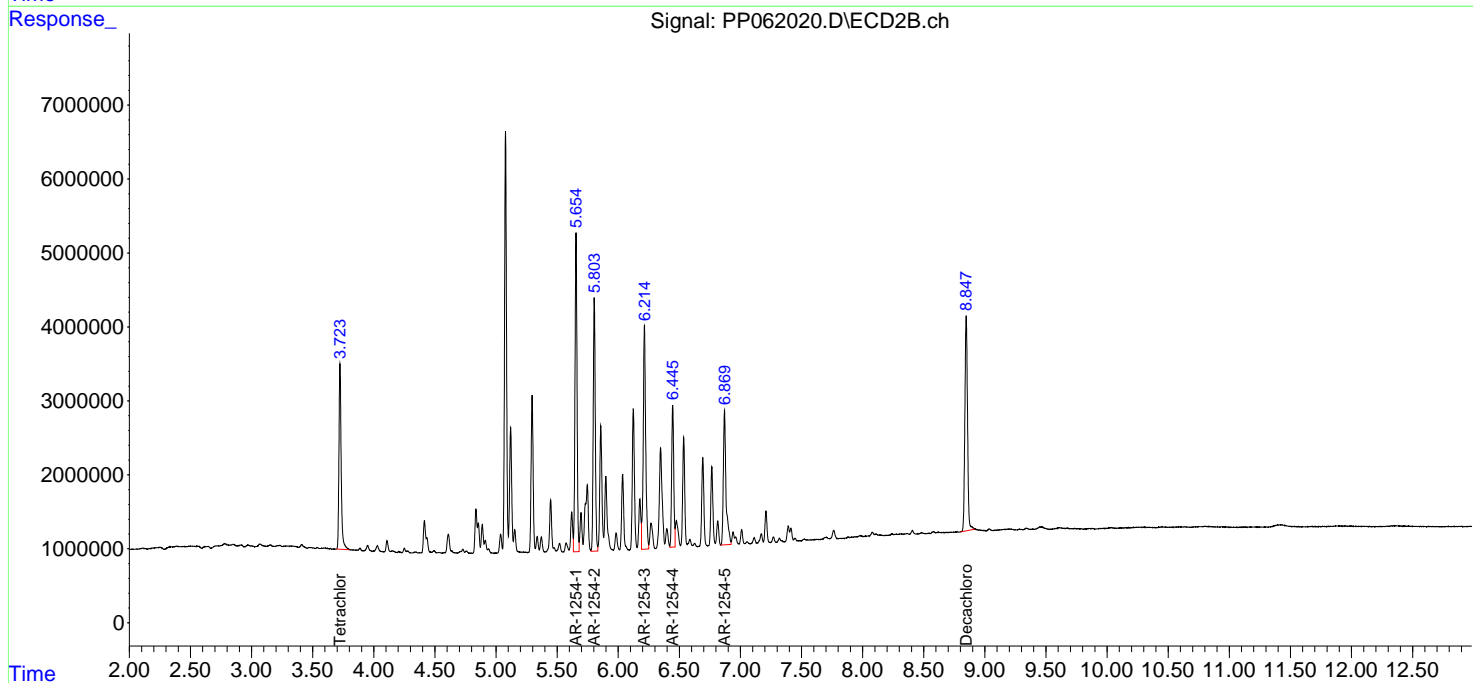
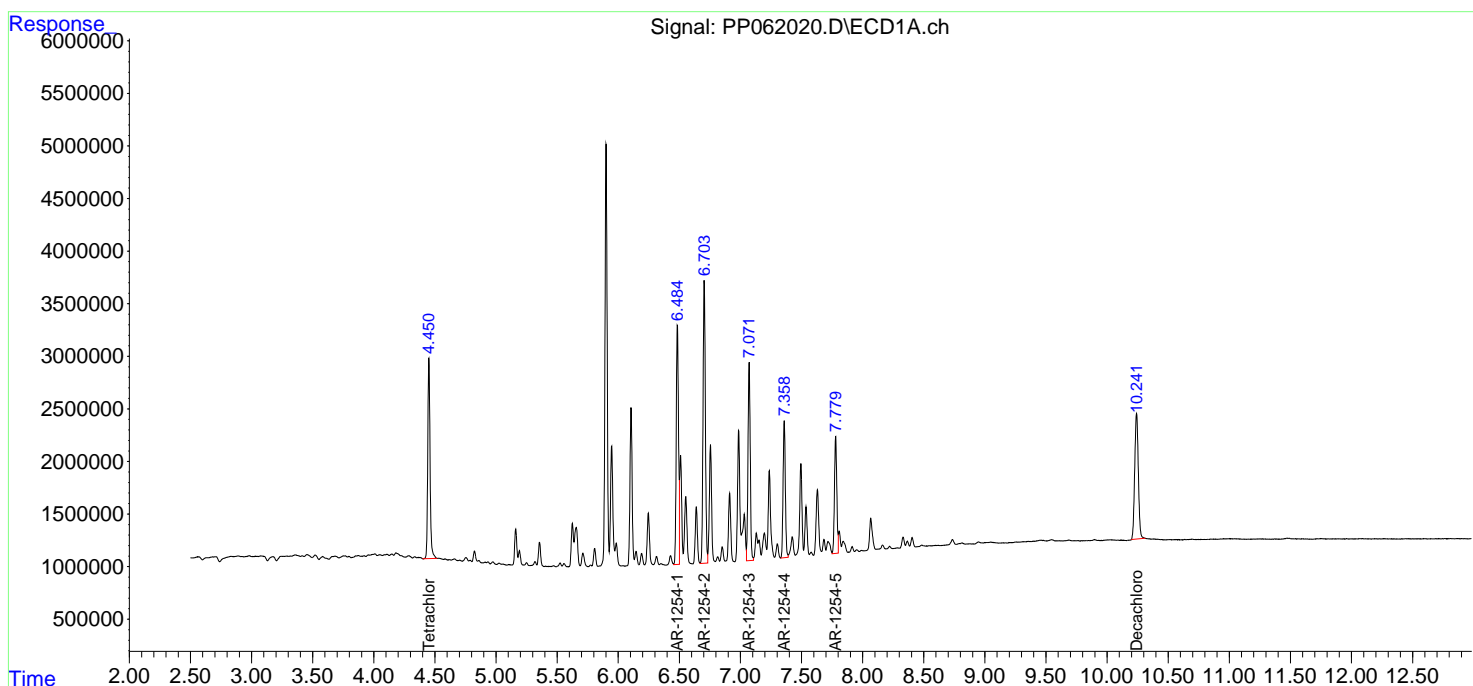
(f)=RT Delta > 1/2 Window (#)=Amounts differ by > 25% (m)=manual int.

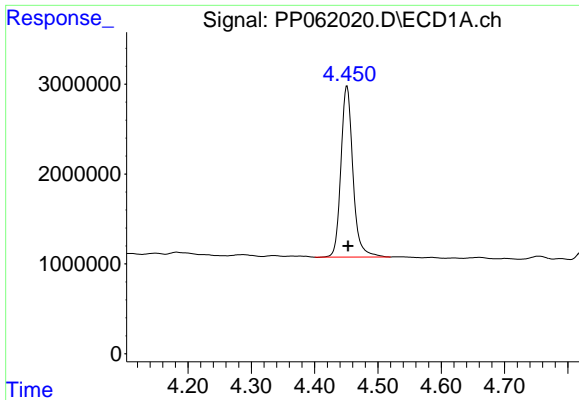
Data Path : Z:\pestpcbsrv\HPCHEM1\ECD_P\Data\PP113023\
 Data File : PP062020.D
 Signal(s) : Signal #1: ECD1A.ch Signal #2: ECD2B.ch
 Acq On : 30 Nov 2023 18:08
 Operator : YP\AJ
 Sample : 05575-15
 Misc :
 ALS Vial : 23 Sample Multiplier: 1

Instrument :
 ECD_P
 ClientSampleId :
 52

Integration File signal 1: autoint1.e
 Integration File signal 2: autoint2.e
 Quant Time: Dec 01 00:11:49 2023
 Quant Method : Z:\pestpcbsrv\HPCHEM1\ECD_P\methods\PP112723.M
 Quant Title : GC EXTRACTABLES
 QLast Update : Tue Nov 28 04:28:00 2023
 Response via : Initial Calibration
 Integrator: ChemStation

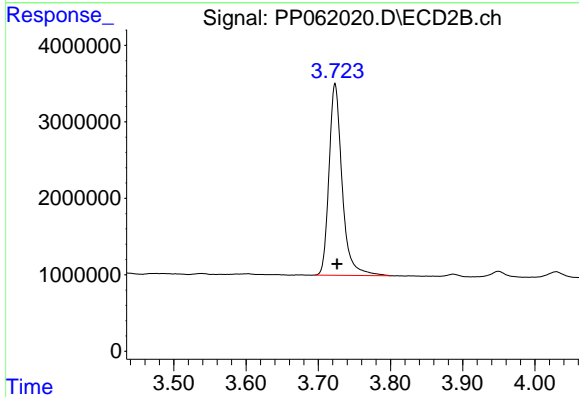
Volume Inj. : 2 µl
 Signal #1 Phase : ZB-MR1 Signal #2 Phase: ZB-MR2
 Signal #1 Info : 30Mx0.32mmx 0.50µ Signal #2 Info : 30M x 0.32mm x 0.25µm



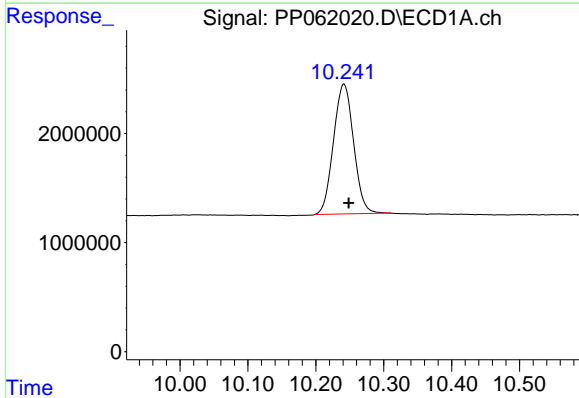


#1 Tetrachloro-m-xylene
 R.T.: 4.451 min
 Delta R.T.: -0.002 min
 Response: 25083560
 Conc: 19.05 ng/ml

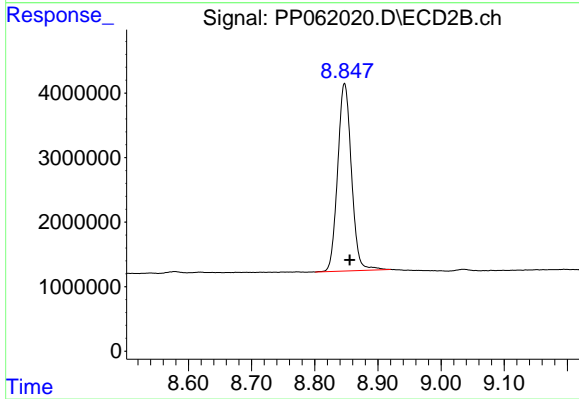
Instrument :
 ECD_P
 ClientSampleId :
 52



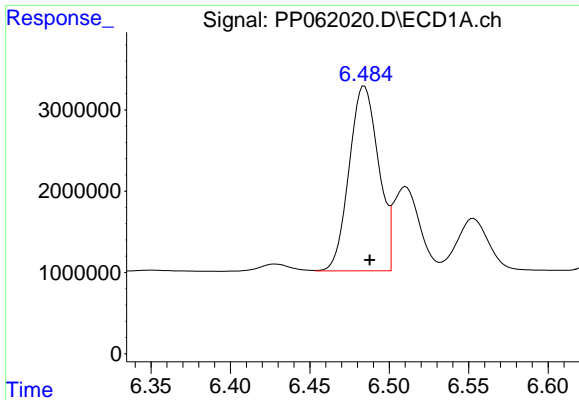
#1 Tetrachloro-m-xylene
 R.T.: 3.723 min
 Delta R.T.: -0.003 min
 Response: 31574560
 Conc: 17.55 ng/ml



#2 Decachlorobiphenyl
 R.T.: 10.242 min
 Delta R.T.: -0.007 min
 Response: 24531629
 Conc: 23.77 ng/ml



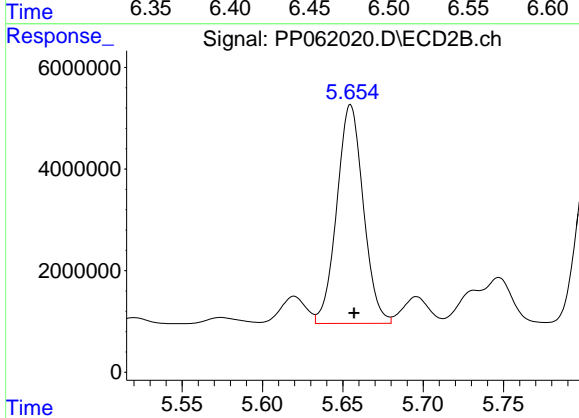
#2 Decachlorobiphenyl
 R.T.: 8.847 min
 Delta R.T.: -0.008 min
 Response: 43976547
 Conc: 21.31 ng/ml



#26 AR-1254-1

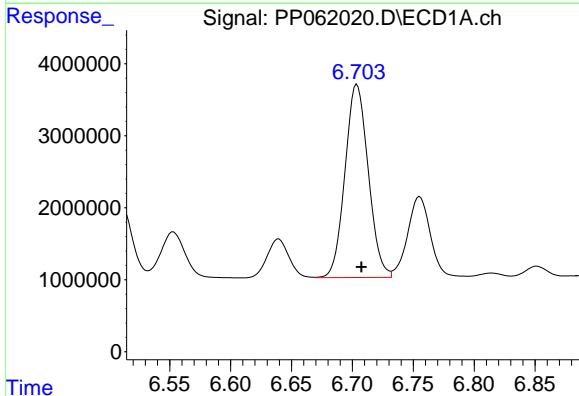
R.T.: 6.484 min
 Delta R.T.: -0.003 min
 Response: 29261337
 Conc: 521.57 ng/ml

Instrument :
 ECD_P
 ClientSampleId :
 52



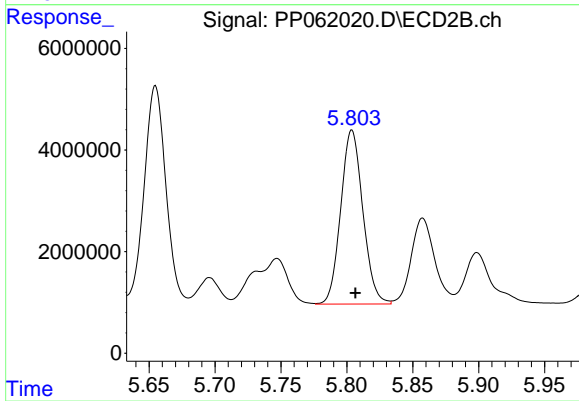
#26 AR-1254-1

R.T.: 5.655 min
 Delta R.T.: -0.002 min
 Response: 49476689
 Conc: 454.40 ng/ml



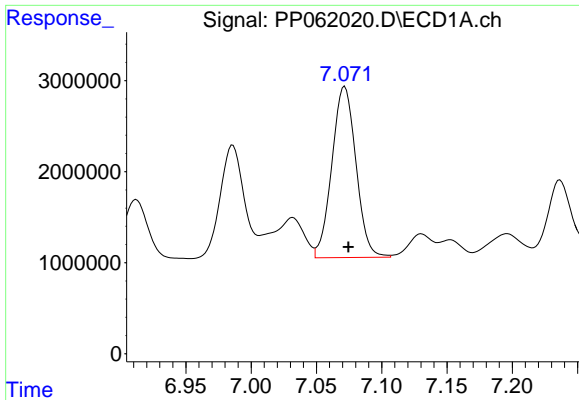
#27 AR-1254-2

R.T.: 6.704 min
 Delta R.T.: -0.004 min
 Response: 35649088
 Conc: 427.55 ng/ml



#27 AR-1254-2

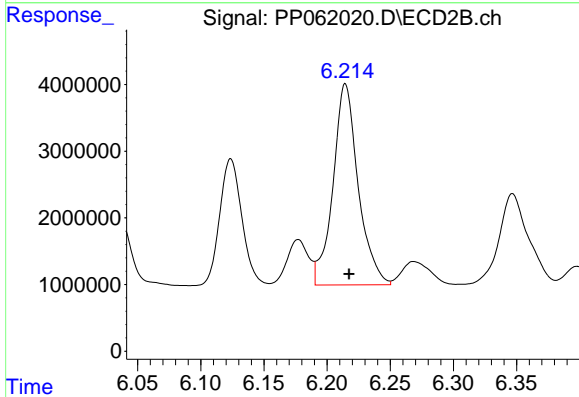
R.T.: 5.804 min
 Delta R.T.: -0.003 min
 Response: 40012220
 Conc: 398.68 ng/ml



#28 AR-1254-3

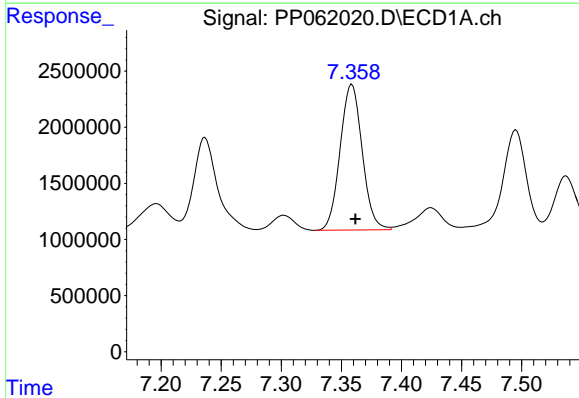
R.T.: 7.072 min
 Delta R.T.: -0.003 min
 Response: 24148733
 Conc: 291.90 ng/ml

Instrument :
 ECD_P
 ClientSampleId :
 52



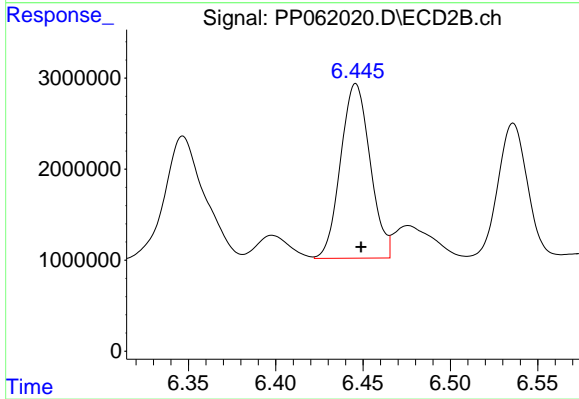
#28 AR-1254-3

R.T.: 6.214 min
 Delta R.T.: -0.003 min
 Response: 41884094
 Conc: 268.10 ng/ml



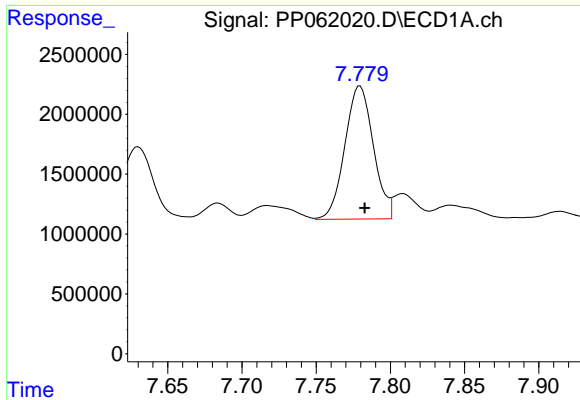
#29 AR-1254-4

R.T.: 7.359 min
 Delta R.T.: -0.003 min
 Response: 16546032
 Conc: 315.52 ng/ml



#29 AR-1254-4

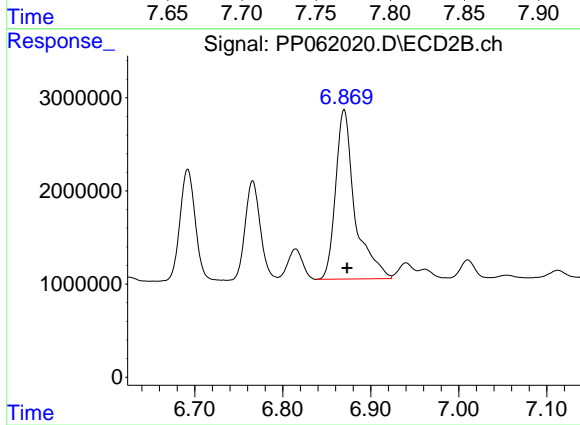
R.T.: 6.446 min
 Delta R.T.: -0.003 min
 Response: 22582173
 Conc: 284.12 ng/ml



#30 AR-1254-5

R.T.: 7.780 min
Delta R.T.: -0.003 min
Response: 14849363
Conc: 233.11 ng/ml

Instrument :
ECD_P
ClientSampleId :
52



#30 AR-1254-5

R.T.: 6.870 min
Delta R.T.: -0.003 min
Response: 27737844
Conc: 196.54 ng/ml