

Data Path : Z:\pestpcbsrv\HPCHEM1\ECD_P\Data\PP120121\
 Data File : PP041557.D
 Signal(s) : Signal #1: ECD1A.CH Signal #2: ECD2B.CH
 Acq On : 02 Dec 2021 9:11
 Operator : AJ\MA
 Sample : M4068-07
 Misc : AR1660 LOD 25 PPB
 ALS Vial : 45 Sample Multiplier: 1

Instrument :
 ECD_P
ClientSampleId :
 LOD-MDL-WATER-01-QT4-2021

Integration File signal 1: autoint1.e
 Integration File signal 2: autoint2.e
 Quant Time: Dec 02 17:22:15 2021
 Quant Method : Z:\pestpcbsrv\HPCHEM1\ECD_P\methods\PP113021.M
 Quant Title : GC EXTRACTABLES
 QLast Update : Tue Nov 30 23:30:32 2021
 Response via : Initial Calibration
 Integrator: ChemStation 6890 Scale Mode: Small noise peaks clipped

Volume Inj. : 2 µl
 Signal #1 Phase : ZB-MR1 Signal #2 Phase: ZB-MR2
 Signal #1 Info : 30Mx0.32mmx 0.50µ Signal #2 Info : 30M x 0.32mm x 0.25µm

Compound	RT#1	RT#2	Resp#1	Resp#2	ng/ml	ng/ml

System Monitoring Compounds						
1) SA Tetrachlo...	4.746	3.750	502246	724905	22.273	23.864
2) SA Decachlor...	10.642	9.007	504564	351642	23.433	22.752
Target Compounds						
3) L1 AR-1016-1	6.062	4.996	20427	23888	25.530	25.712
4) L1 AR-1016-2	6.085	5.016	27343	38818	22.949	27.345
5) L1 AR-1016-3	6.148	5.205	16886	22357	22.660	27.846
6) L1 AR-1016-4	6.259	5.260	14525	14313	23.927	22.715
7) L1 AR-1016-5	6.570	5.486	12642	15625	21.573	21.005
31) L7 AR-1260-1	7.742	6.580	22344	30782	22.634	26.874
32) L7 AR-1260-2	8.008	6.778	27482	36041	21.874m	27.457m#
33) L7 AR-1260-3	8.374	6.933	21845	47096	24.124	35.210 #
34) L7 AR-1260-4	8.603	7.414	21474	20244	20.067	20.560
35) L7 AR-1260-5	8.918	7.665	48430	62252	23.374	30.117 #

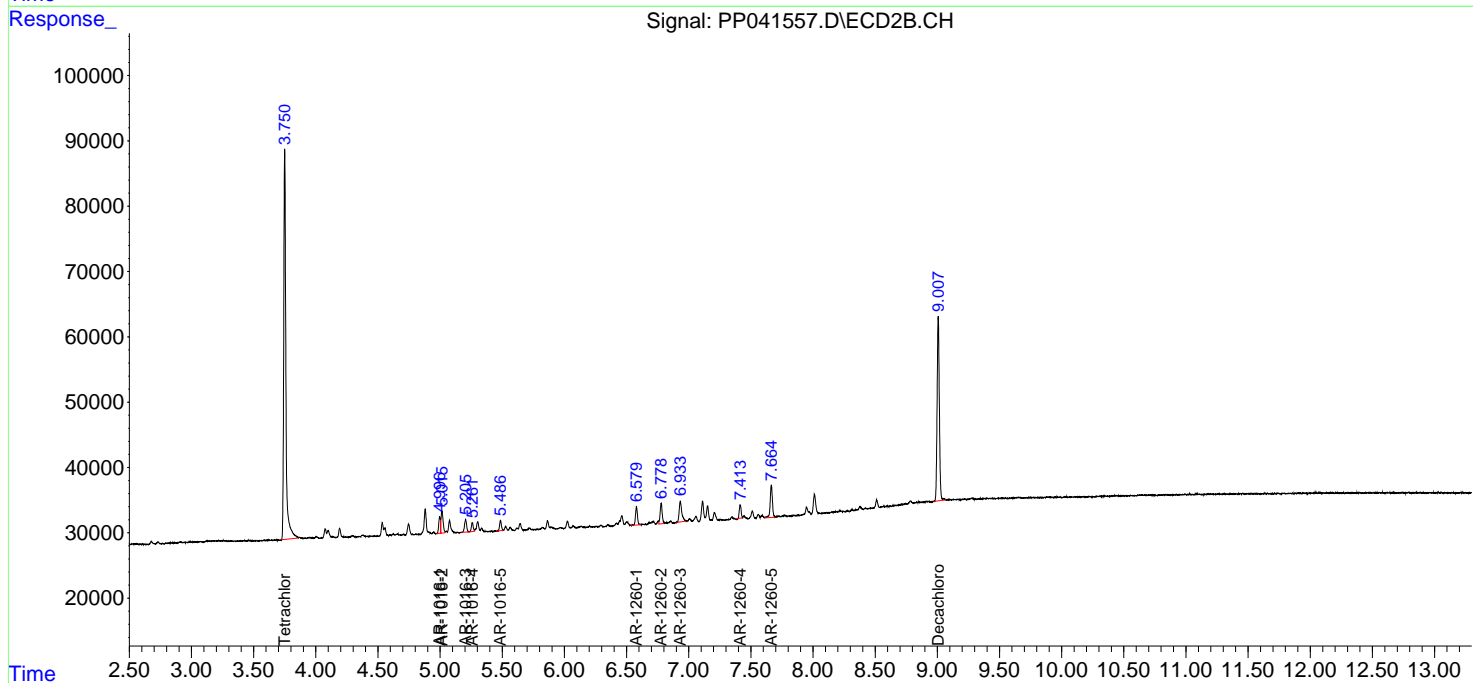
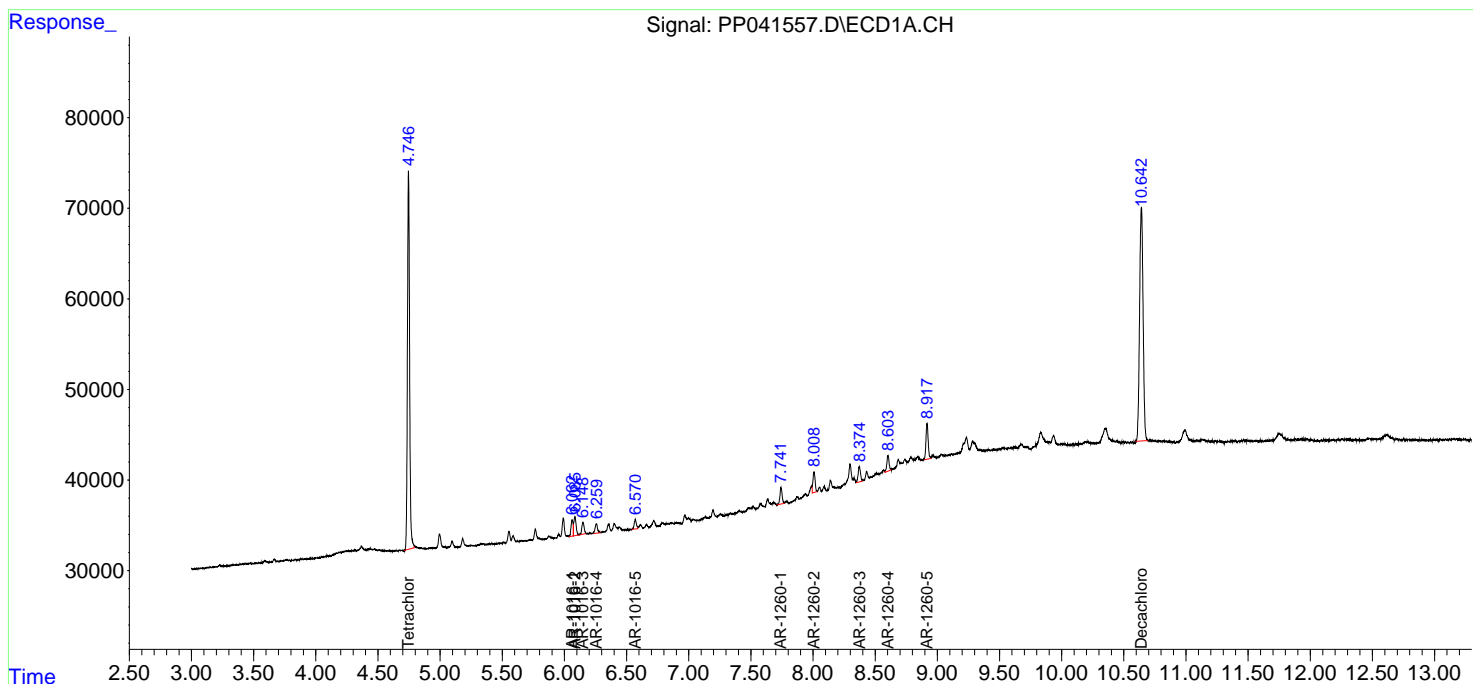
(f)=RT Delta > 1/2 Window (#)=Amounts differ by > 25% (m)=manual int.

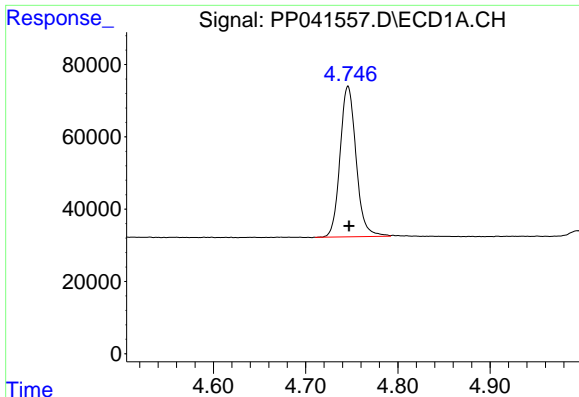
Data Path : Z:\pestpcbsrv\HPCHEM1\ECD_P\Data\PP120121\
 Data File : PP041557.D
 Signal(s) : Signal #1: ECD1A.CH Signal #2: ECD2B.CH
 Acq On : 02 Dec 2021 9:11
 Operator : AJ\MA
 Sample : M4068-07
 Misc : AR1660 LOD 25 PPB
 ALS Vial : 45 Sample Multiplier: 1

Instrument :
 ECD_P
ClientSampleId :
 LOD-MDL-WATER-01-QT4-2021

Integration File signal 1: autoint1.e
 Integration File signal 2: autoint2.e
 Quant Time: Dec 02 17:22:15 2021
 Quant Method : Z:\pestpcbsrv\HPCHEM1\ECD_P\methods\PP113021.M
 Quant Title : GC EXTRACTABLES
 QLast Update : Tue Nov 30 23:30:32 2021
 Response via : Initial Calibration
 Integrator: ChemStation 6890 Scale Mode: Small noise peaks clipped

Volume Inj. : 2 µl
 Signal #1 Phase : ZB-MR1 Signal #2 Phase: ZB-MR2
 Signal #1 Info : 30Mx0.32mmx 0.50µ Signal #2 Info : 30M x 0.32mm x 0.25µm

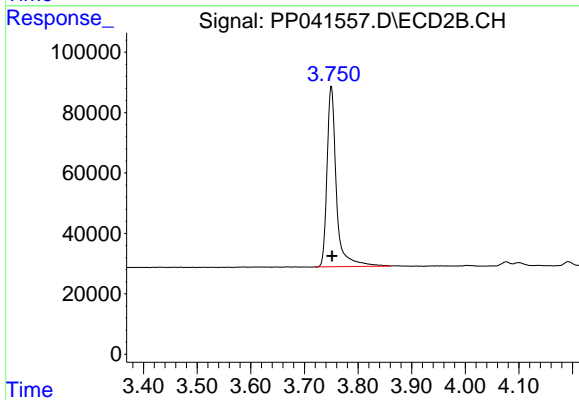




#1 Tetrachloro-m-xylene

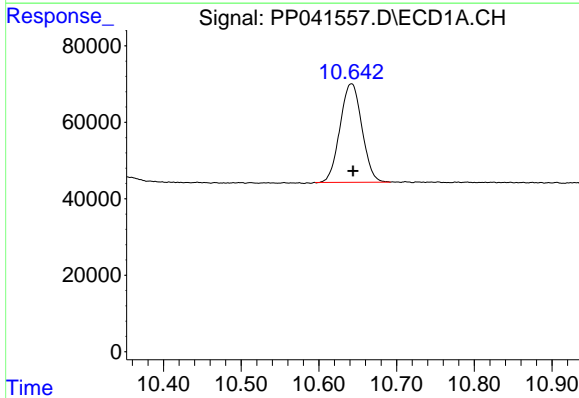
R.T.: 4.746 min
 Delta R.T.: 0.000 min
 Response: 502246
 Conc: 22.27 ng/ml

Instrument :
 ECD_P
 ClientSampleId :
 LOD-MDL-WATER-01-QT4-2021



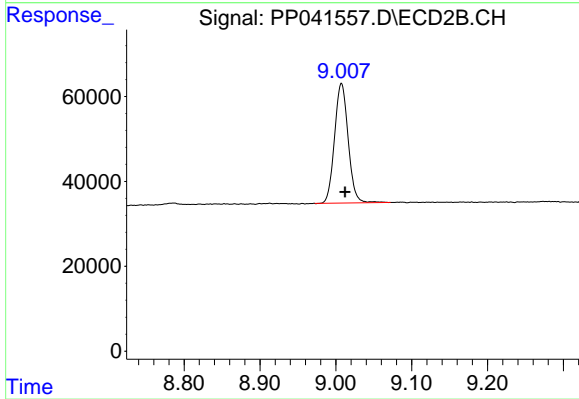
#1 Tetrachloro-m-xylene

R.T.: 3.750 min
 Delta R.T.: -0.001 min
 Response: 724905
 Conc: 23.86 ng/ml



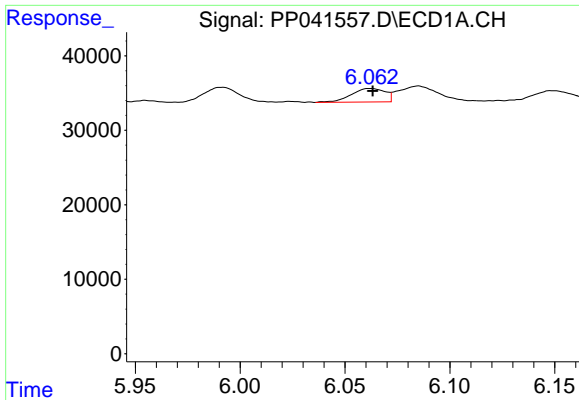
#2 Decachlorobiphenyl

R.T.: 10.642 min
 Delta R.T.: -0.002 min
 Response: 504564
 Conc: 23.43 ng/ml



#2 Decachlorobiphenyl

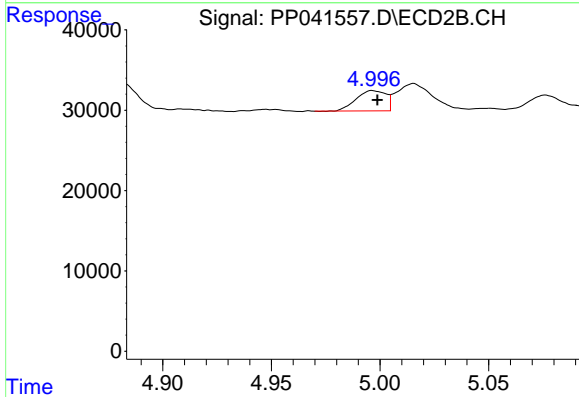
R.T.: 9.007 min
 Delta R.T.: -0.005 min
 Response: 351642
 Conc: 22.75 ng/ml



#3 AR-1016-1

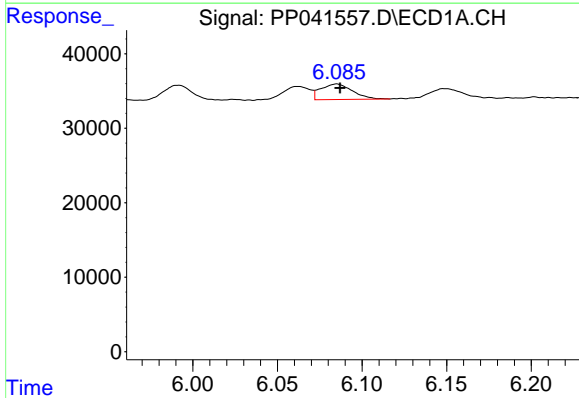
R.T.: 6.062 min
 Delta R.T.: -0.001 min
 Response: 20427
 Conc: 25.53 ng/ml

Instrument :
 ECD_P
 ClientSampleId :
 LOD-MDL-WATER-01-QT4-2021



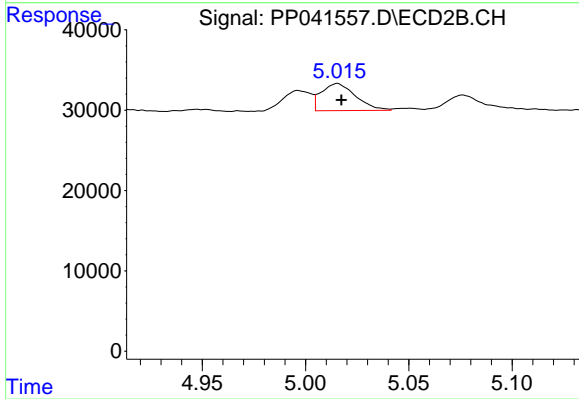
#3 AR-1016-1

R.T.: 4.996 min
 Delta R.T.: -0.002 min
 Response: 23888
 Conc: 25.71 ng/ml



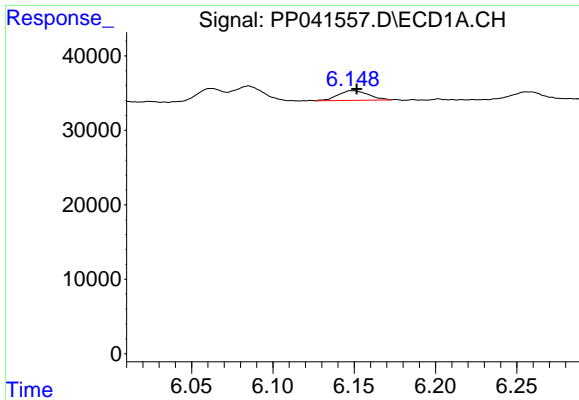
#4 AR-1016-2

R.T.: 6.085 min
 Delta R.T.: -0.002 min
 Response: 27343
 Conc: 22.95 ng/ml



#4 AR-1016-2

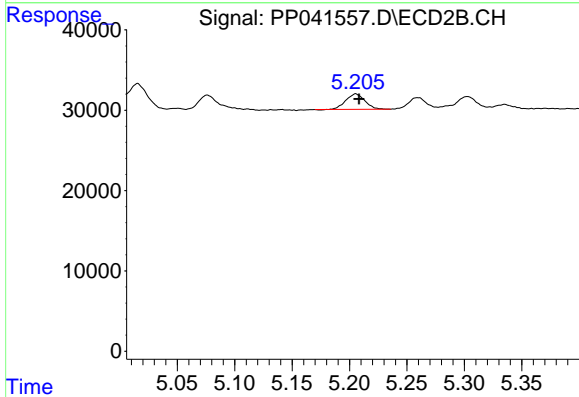
R.T.: 5.016 min
 Delta R.T.: -0.002 min
 Response: 38818
 Conc: 27.34 ng/ml



#5 AR-1016-3

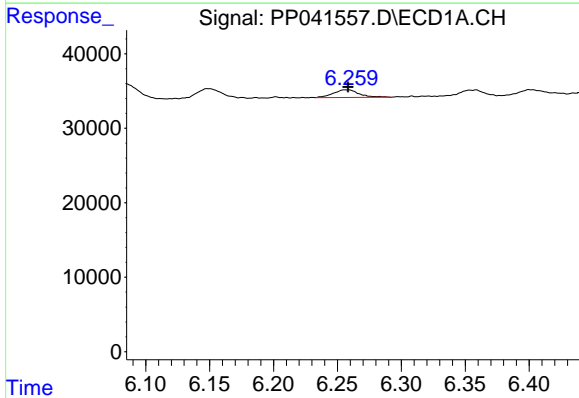
R.T.: 6.148 min
 Delta R.T.: -0.003 min
 Response: 16886
 Conc: 22.66 ng/ml

Instrument :
 ECD_P
 ClientSampleId :
 LOD-MDL-WATER-01-QT4-2021



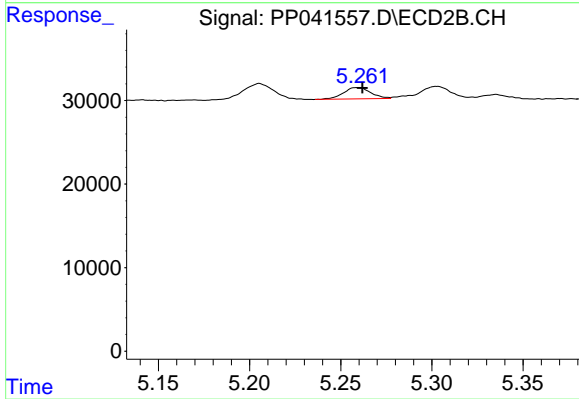
#5 AR-1016-3

R.T.: 5.205 min
 Delta R.T.: -0.003 min
 Response: 22357
 Conc: 27.85 ng/ml



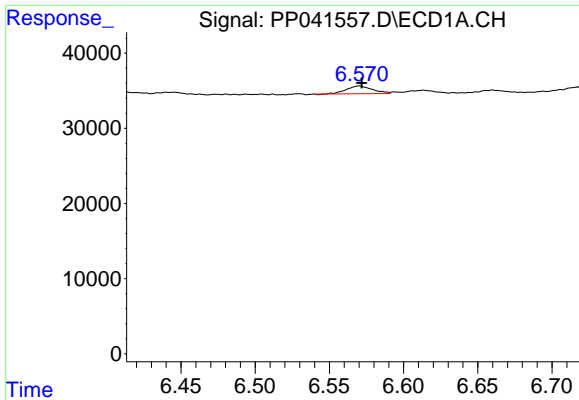
#6 AR-1016-4

R.T.: 6.259 min
 Delta R.T.: 0.000 min
 Response: 14525
 Conc: 23.93 ng/ml



#6 AR-1016-4

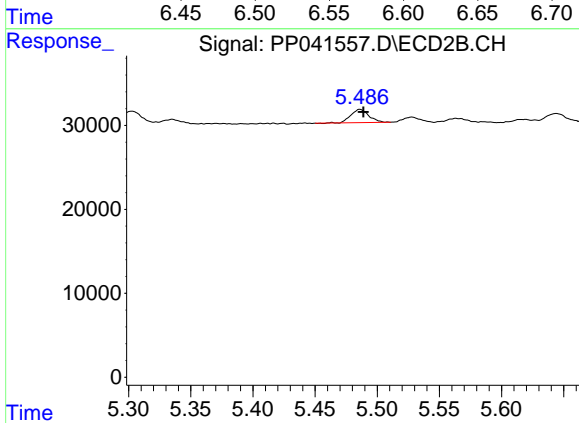
R.T.: 5.260 min
 Delta R.T.: -0.002 min
 Response: 14313
 Conc: 22.71 ng/ml



#7 AR-1016-5

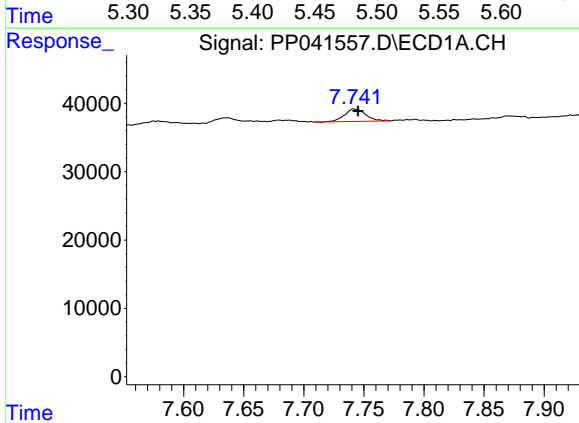
R.T.: 6.570 min
 Delta R.T.: -0.001 min
 Response: 12642
 Conc: 21.57 ng/ml

Instrument :
 ECD_P
 ClientSampleId :
 LOD-MDL-WATER-01-QT4-2021



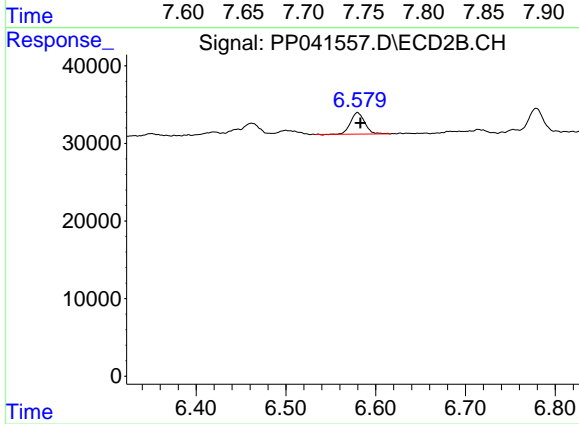
#7 AR-1016-5

R.T.: 5.486 min
 Delta R.T.: -0.003 min
 Response: 15625
 Conc: 21.00 ng/ml



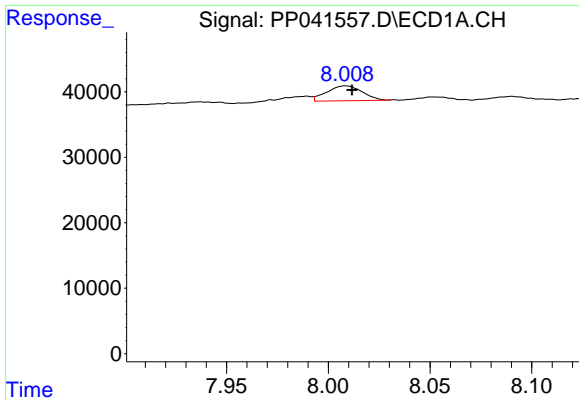
#31 AR-1260-1

R.T.: 7.742 min
 Delta R.T.: -0.004 min
 Response: 22344
 Conc: 22.63 ng/ml



#31 AR-1260-1

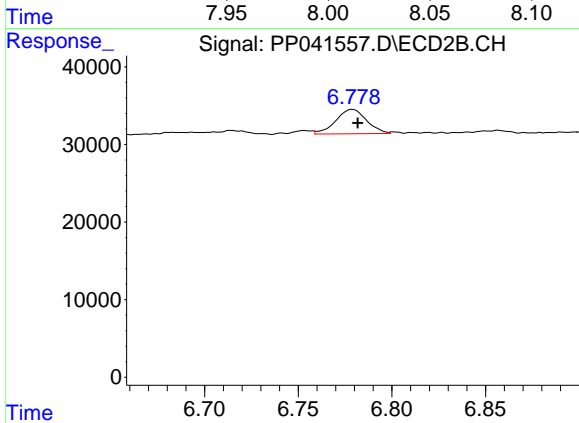
R.T.: 6.580 min
 Delta R.T.: -0.003 min
 Response: 30782
 Conc: 26.87 ng/ml



#32 AR-1260-2

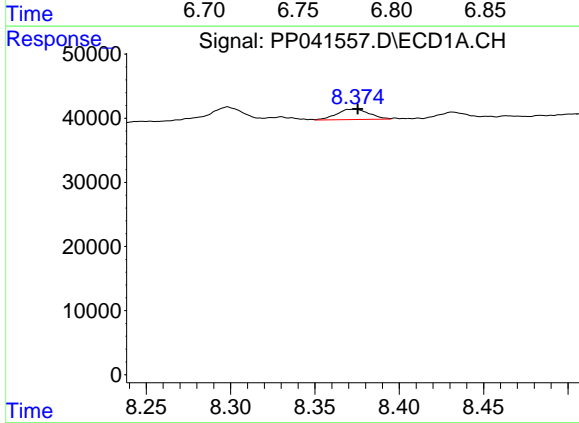
R.T.: 8.008 min
 Delta R.T.: -0.004 min
 Response: 27482
 Conc: 21.87 ng/ml

Instrument :
 ECD_P
 ClientSampleId :
 LOD-MDL-WATER-01-QT4-2021



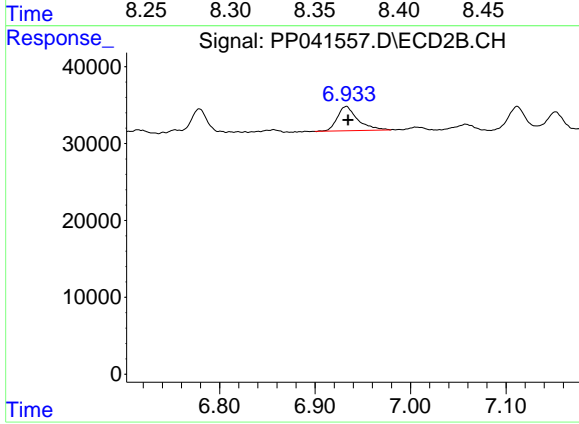
#32 AR-1260-2

R.T.: 6.778 min
 Delta R.T.: -0.004 min
 Response: 36041
 Conc: 27.46 ng/ml m



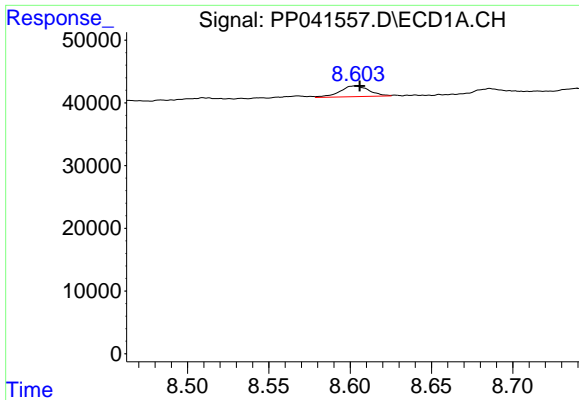
#33 AR-1260-3

R.T.: 8.374 min
 Delta R.T.: -0.001 min
 Response: 21845
 Conc: 24.12 ng/ml



#33 AR-1260-3

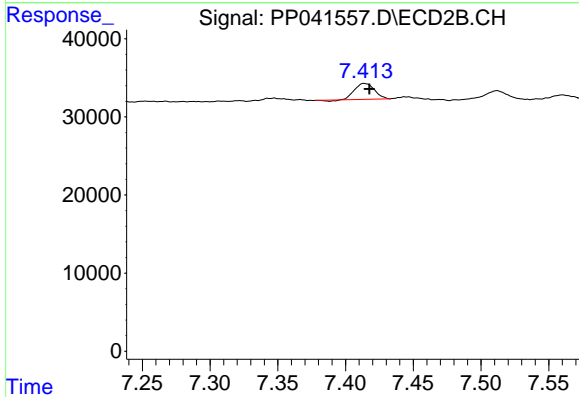
R.T.: 6.933 min
 Delta R.T.: -0.002 min
 Response: 47096
 Conc: 35.21 ng/ml



#34 AR-1260-4

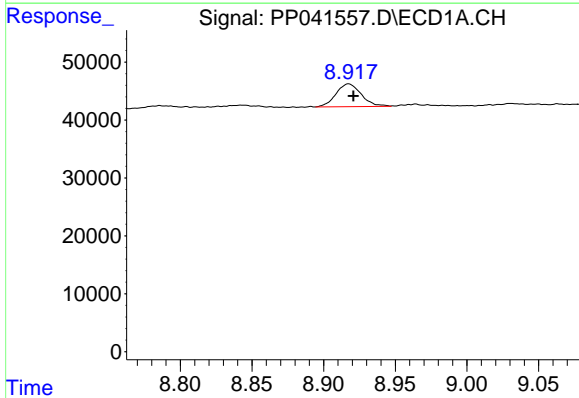
R.T.: 8.603 min
 Delta R.T.: -0.002 min
 Response: 21474
 Conc: 20.07 ng/ml

Instrument :
 ECD_P
 ClientSampleId :
 LOD-MDL-WATER-01-QT4-2021



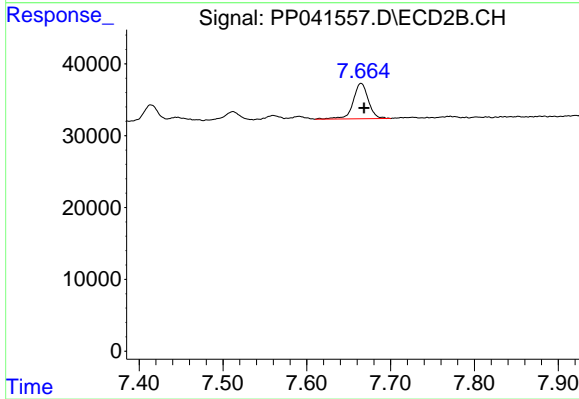
#34 AR-1260-4

R.T.: 7.414 min
 Delta R.T.: -0.004 min
 Response: 20244
 Conc: 20.56 ng/ml



#35 AR-1260-5

R.T.: 8.918 min
 Delta R.T.: -0.003 min
 Response: 48430
 Conc: 23.37 ng/ml



#35 AR-1260-5

R.T.: 7.665 min
 Delta R.T.: -0.003 min
 Response: 62252
 Conc: 30.12 ng/ml