

Data Path : Z:\pestpcbsrv\HPCHEM1\ECD_P\Data\PP120123\
 Data File : PP062103.D
 Signal(s) : Signal #1: ECD1A.ch Signal #2: ECD2B.ch
 Acq On : 01 Dec 2023 23:47
 Operator : YP\AJ
 Sample : 05387-32
 Misc :
 ALS Vial : 37 Sample Multiplier: 1

Instrument :
 ECD_P
ClientSampleId :
 S4-2C

Manual Integrations
APPROVED

Reviewed By :Yogesh Patel 12/04/2023
 Supervised By :Ankita Jodhani 12/04/2023

Integration File signal 1: autoint1.e
 Integration File signal 2: autoint2.e
 Quant Time: Dec 02 00:23:39 2023
 Quant Method : Z:\pestpcbsrv\HPCHEM1\ECD_P\methods\PP112723.M
 Quant Title : GC EXTRACTABLES
 QLast Update : Tue Nov 28 04:28:00 2023
 Response via : Initial Calibration
 Integrator: ChemStation

Volume Inj. : 2 µl
 Signal #1 Phase : ZB-MR1 Signal #2 Phase: ZB-MR2
 Signal #1 Info : 30Mx0.32mmx 0.50µ Signal #2 Info : 30M x 0.32mm x 0.25µm

Compound	RT#1	RT#2	Resp#1	Resp#2	ng/ml	ng/ml

System Monitoring Compounds						
1) SA Tetrachlo...	4.452	3.725	23414502	29451160	17.786	16.367
2) SA Decachlor...	10.242	8.847	11232824	18987454	10.884	9.200m
Target Compounds						
26) L6 AR-1254-1	6.485	5.654	3222661	6350901	57.442	58.327
27) L6 AR-1254-2	6.705	5.804	7522888	7750201	90.224	77.222
28) L6 AR-1254-3	7.072	6.215	8959708	15957778	108.302	102.146
29) L6 AR-1254-4	7.358	6.446	6881423	9402816	131.223	118.302
30) L6 AR-1254-5	7.779	6.870	9570632	20276951	150.245m	143.678

(f)=RT Delta > 1/2 Window (#)=Amounts differ by > 25% (m)=manual int.

Data Path : Z:\pestpcbsrv\HPCHEM1\ECD_P\Data\PP120123\
 Data File : PP062103.D
 Signal(s) : Signal #1: ECD1A.ch Signal #2: ECD2B.ch
 Acq On : 01 Dec 2023 23:47
 Operator : YP\AJ
 Sample : 05387-32
 Misc :
 ALS Vial : 37 Sample Multiplier: 1

Instrument :

ECD_P

ClientSampleId :

S4-2C

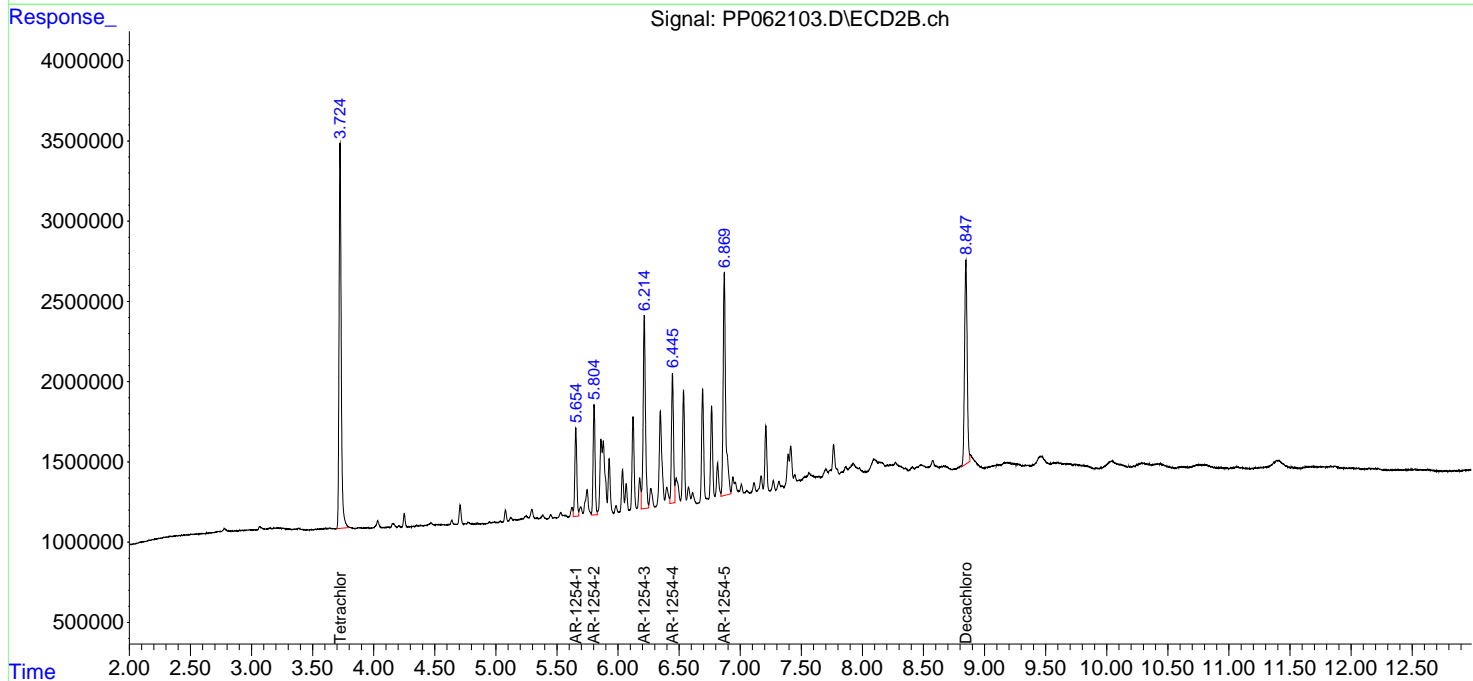
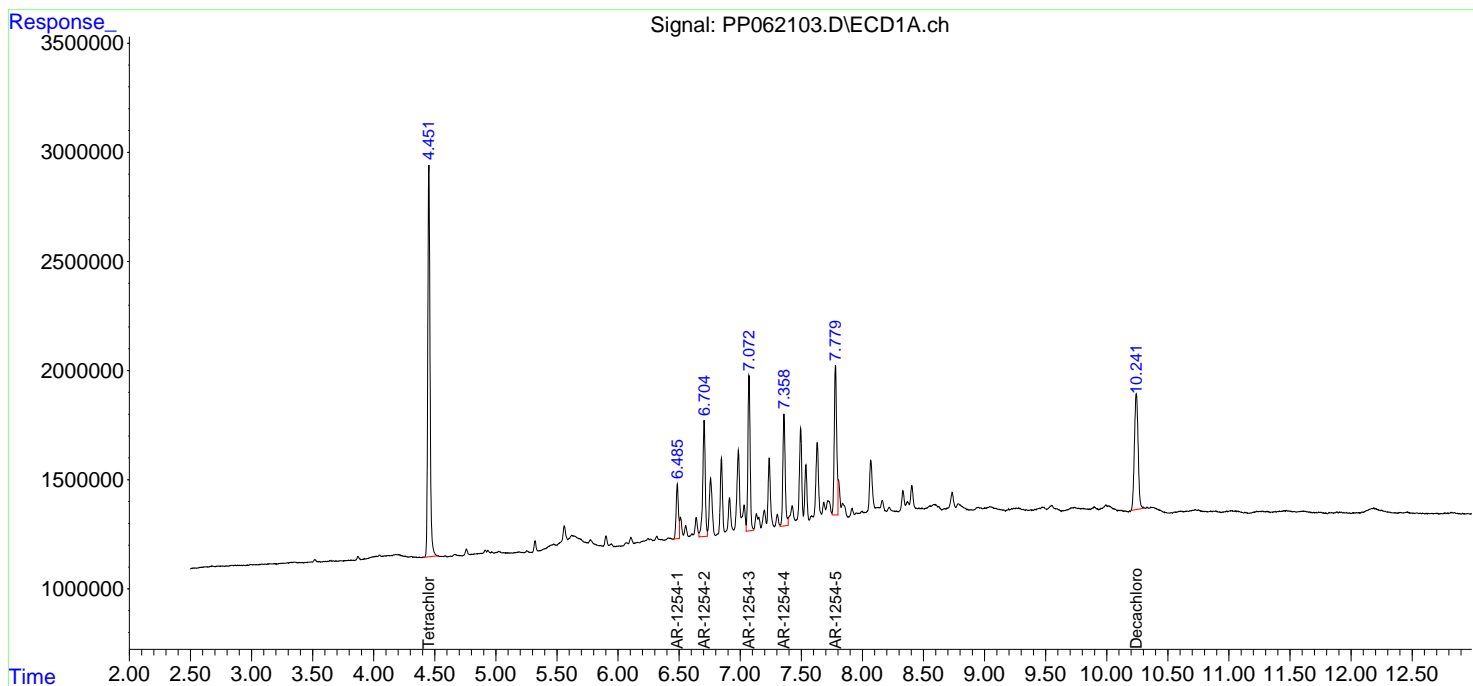
Manual Integrations

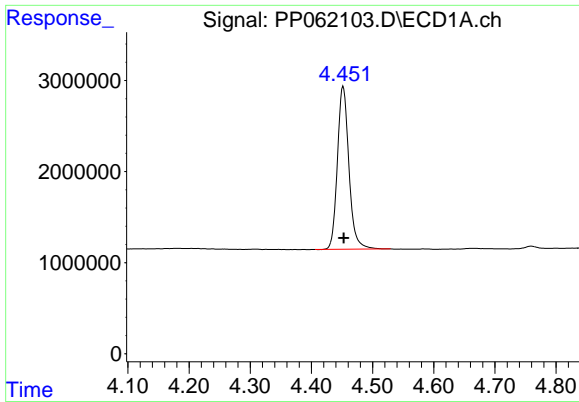
APPROVED

Reviewed By :Yogesh Patel 12/04/2023
 Supervised By :Ankita Jodhani 12/04/2023

Integration File signal 1: autoint1.e
 Integration File signal 2: autoint2.e
 Quant Time: Dec 02 00:23:39 2023
 Quant Method : Z:\pestpcbsrv\HPCHEM1\ECD_P\methods\PP112723.M
 Quant Title : GC EXTRACTABLES
 QLast Update : Tue Nov 28 04:28:00 2023
 Response via : Initial Calibration
 Integrator: ChemStation

Volume Inj. : 2 µl
 Signal #1 Phase : ZB-MR1 Signal #2 Phase: ZB-MR2
 Signal #1 Info : 30Mx0.32mmx 0.50µ Signal #2 Info : 30M x 0.32mm x 0.25µm



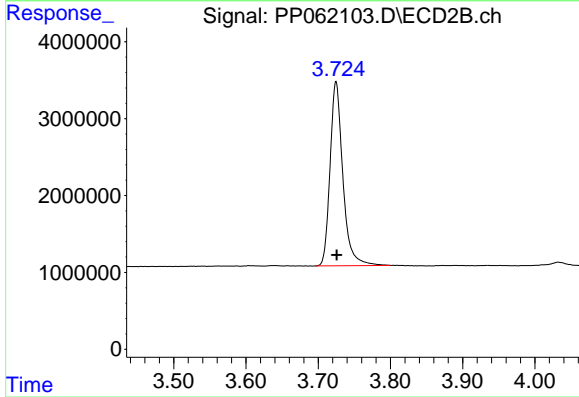


#1 Tetrachloro-m-xylene
 R.T.: 4.452 min
 Delta R.T.: -0.001 min
 Response: 23414502
 Conc: 17.79 ng/ml

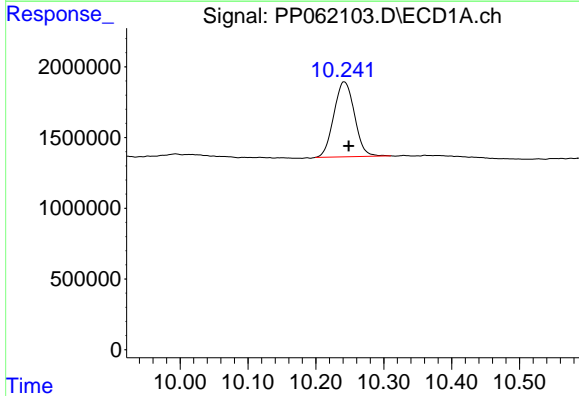
Instrument :
 ECD_P
 ClientSampleId :
 S4-2C

Manual Integrations
 APPROVED

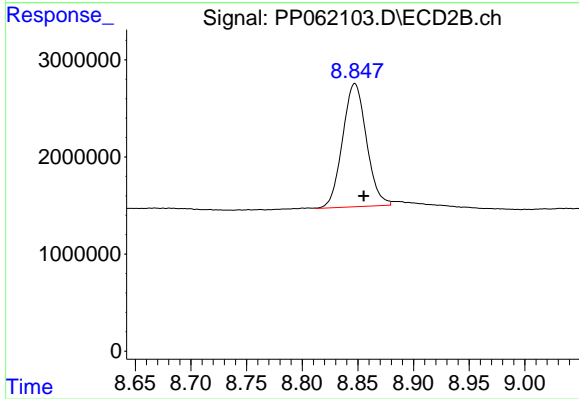
Reviewed By :Yogesh Patel 12/04/2023
 Supervised By :Ankita Jodhani 12/04/2023



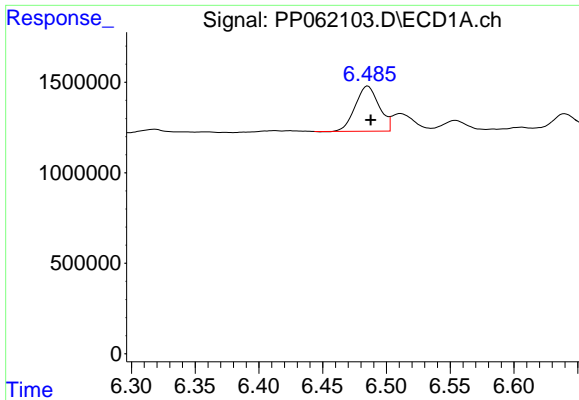
#1 Tetrachloro-m-xylene
 R.T.: 3.725 min
 Delta R.T.: -0.001 min
 Response: 29451160
 Conc: 16.37 ng/ml



#2 Decachlorobiphenyl
 R.T.: 10.242 min
 Delta R.T.: -0.006 min
 Response: 11232824
 Conc: 10.88 ng/ml



#2 Decachlorobiphenyl
 R.T.: 8.847 min
 Delta R.T.: -0.008 min
 Response: 18987454
 Conc: 9.20 ng/ml m



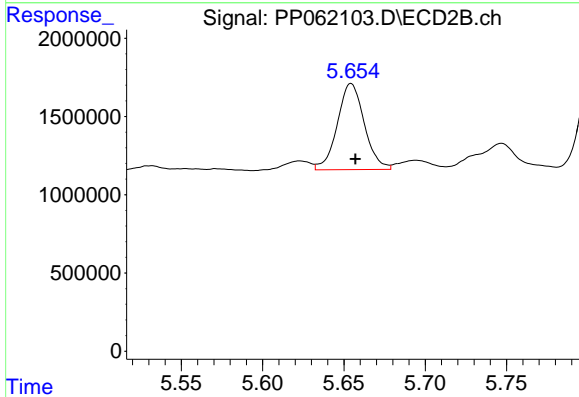
#26 AR-1254-1

R.T.: 6.485 min
 Delta R.T.: -0.002 min
 Response: 3222661
 Conc: 57.44 ng/ml

Instrument :
 ECD_P
 ClientSampleId :
 S4-2C

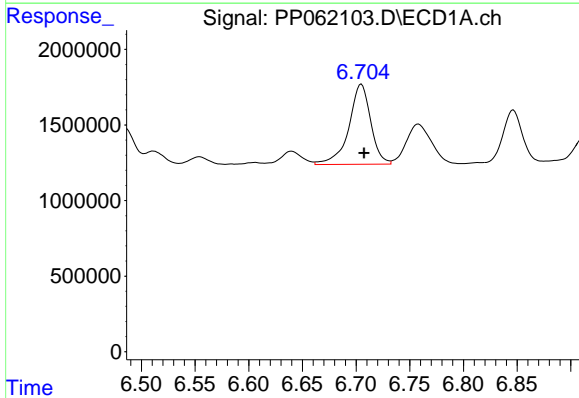
Manual Integrations
 APPROVED

Reviewed By :Yogesh Patel 12/04/2023
 Supervised By :Ankita Jodhani 12/04/2023



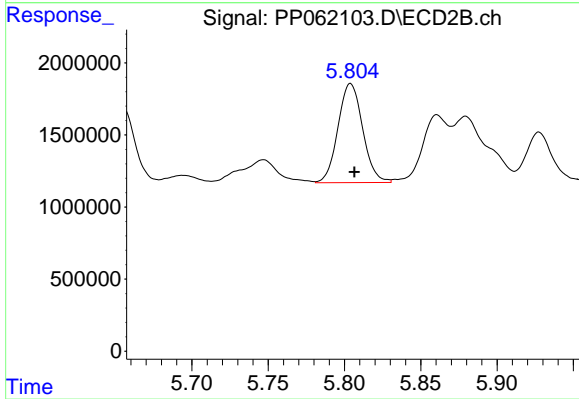
#26 AR-1254-1

R.T.: 5.654 min
 Delta R.T.: -0.003 min
 Response: 6350901
 Conc: 58.33 ng/ml



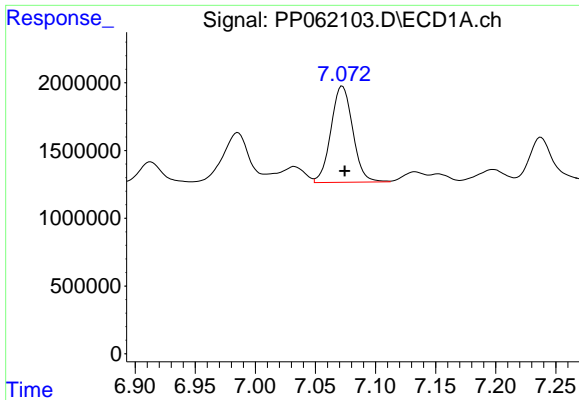
#27 AR-1254-2

R.T.: 6.705 min
 Delta R.T.: -0.002 min
 Response: 7522888
 Conc: 90.22 ng/ml



#27 AR-1254-2

R.T.: 5.804 min
 Delta R.T.: -0.003 min
 Response: 7750201
 Conc: 77.22 ng/ml



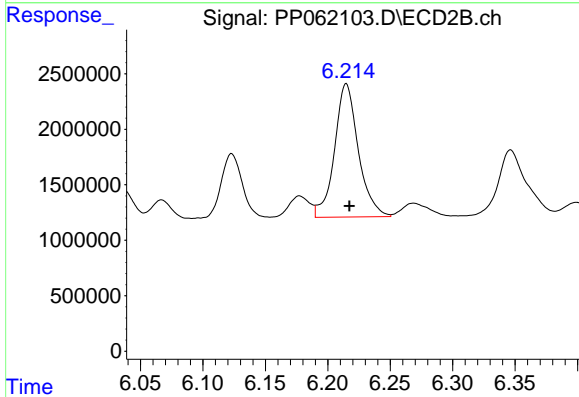
#28 AR-1254-3

R.T.: 7.072 min
 Delta R.T.: -0.002 min
 Response: 8959708
 Conc: 108.30 ng/ml

Instrument :
 ECD_P
 ClientSampleId :
 S4-2C

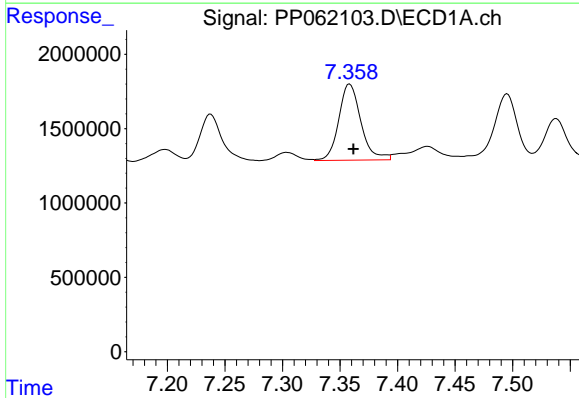
Manual Integrations
 APPROVED

Reviewed By :Yogesh Patel 12/04/2023
 Supervised By :Ankita Jodhani 12/04/2023



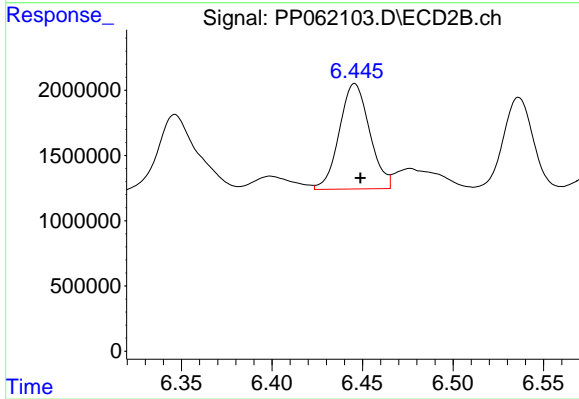
#28 AR-1254-3

R.T.: 6.215 min
 Delta R.T.: -0.003 min
 Response: 15957778
 Conc: 102.15 ng/ml



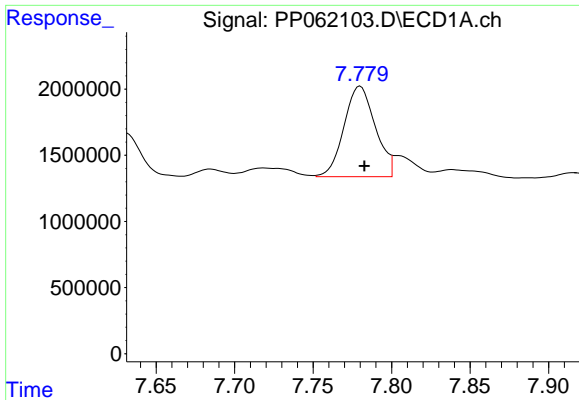
#29 AR-1254-4

R.T.: 7.358 min
 Delta R.T.: -0.003 min
 Response: 6881423
 Conc: 131.22 ng/ml



#29 AR-1254-4

R.T.: 6.446 min
 Delta R.T.: -0.003 min
 Response: 9402816
 Conc: 118.30 ng/ml



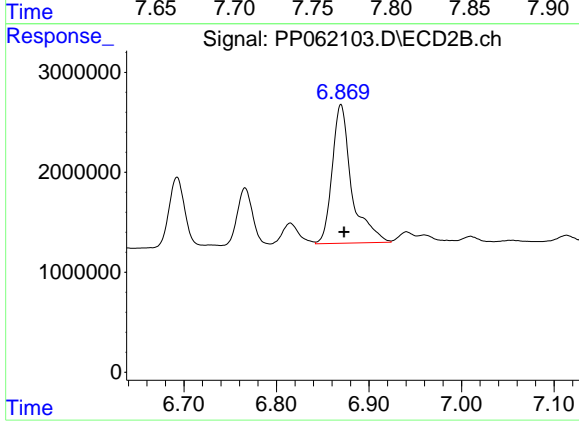
#30 AR-1254-5

R.T.: 7.779 min
Delta R.T.: -0.003 min
Response: 9570632
Conc: 150.25 ng/ml

Instrument :
ECD_P
ClientSampleId :
S4-2C

Manual Integrations
APPROVED

Reviewed By :Yogesh Patel 12/04/2023
Supervised By :Ankita Jodhani 12/04/2023



#30 AR-1254-5

R.T.: 6.870 min
Delta R.T.: -0.003 min
Response: 20276951
Conc: 143.68 ng/ml