

Data Path : Z:\pestpcbsrv\HPCHEM1\ECD_P\Data\PP120123\
 Data File : PP062107.D
 Signal(s) : Signal #1: ECD1A.ch Signal #2: ECD2B.ch
 Acq On : 02 Dec 2023 00:52
 Operator : YP\AJ
 Sample : 05387-36
 Misc :
 ALS Vial : 41 Sample Multiplier: 1

Instrument :
 ECD_P
ClientSampleId :
 S4-4D

Manual Integrations
APPROVED

Reviewed By :Yogesh Patel 12/04/2023
 Supervised By :Ankita Jodhani 12/04/2023

Integration File signal 1: autoint1.e
 Integration File signal 2: autoint2.e
 Quant Time: Dec 02 01:16:41 2023
 Quant Method : Z:\pestpcbsrv\HPCHEM1\ECD_P\methods\PP112723.M
 Quant Title : GC EXTRACTABLES
 QLast Update : Tue Nov 28 04:28:00 2023
 Response via : Initial Calibration
 Integrator: ChemStation

Volume Inj. : 2 µl
 Signal #1 Phase : ZB-MR1 Signal #2 Phase: ZB-MR2
 Signal #1 Info : 30Mx0.32mmx 0.50µ Signal #2 Info : 30M x 0.32mm x 0.25µm

Compound	RT#1	RT#2	Resp#1	Resp#2	ng/ml	ng/ml

System Monitoring Compounds						
1) SA Tetrachlo...	4.452	3.724	27108234	34010443	20.592	18.901
2) SA Decachlor...	10.244	8.847	17449380	30463891	16.908	14.760m
Target Compounds						
26) L6 AR-1254-1	6.482	5.654	8397831	10822089	149.686	99.391 #
27) L6 AR-1254-2	6.704	5.804	13234018	15814476	158.719	157.574
28) L6 AR-1254-3	7.072	6.214	20365787	36619879	246.174	234.404
29) L6 AR-1254-4	7.360	6.445	14601701	18043975	278.442	227.021
30) L6 AR-1254-5	7.780	6.869	18716878	290.5E6	293.828m	2058.720 #

(f)=RT Delta > 1/2 Window (#)=Amounts differ by > 25% (m)=manual int.

Data Path : Z:\pestpcbsrv\HPCHEM1\ECD_P\Data\PP120123\
 Data File : PP062107.D
 Signal(s) : Signal #1: ECD1A.ch Signal #2: ECD2B.ch
 Acq On : 02 Dec 2023 00:52
 Operator : YP\AJ
 Sample : 05387-36
 Misc :
 ALS Vial : 41 Sample Multiplier: 1

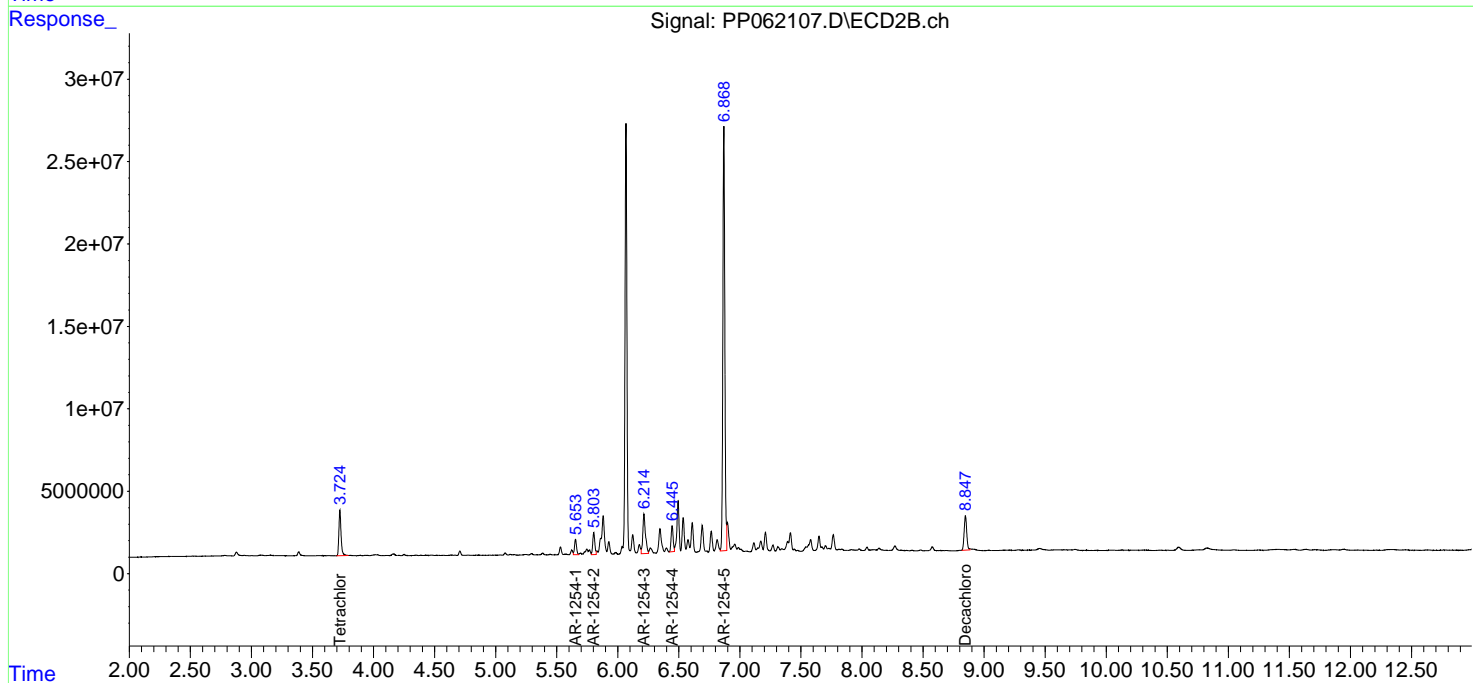
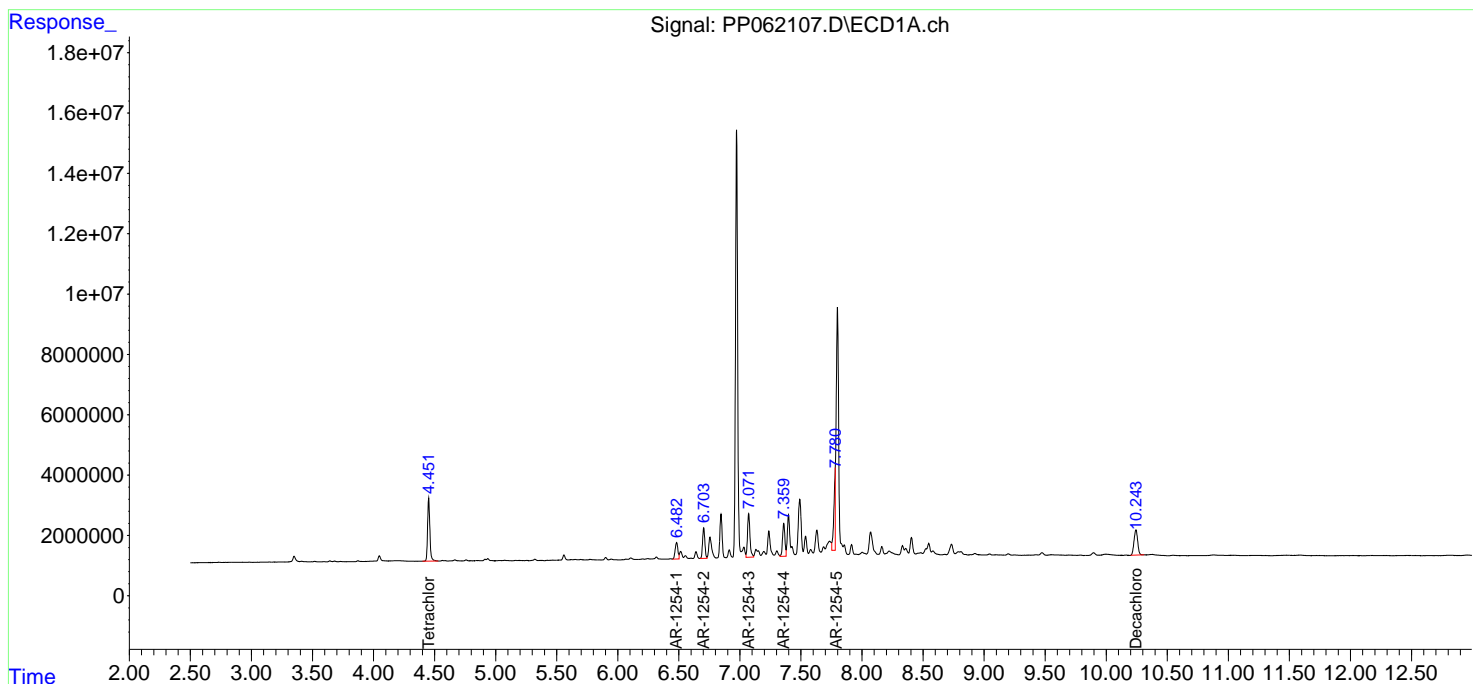
Instrument :
 ECD_P
ClientSampleId :
 S4-4D

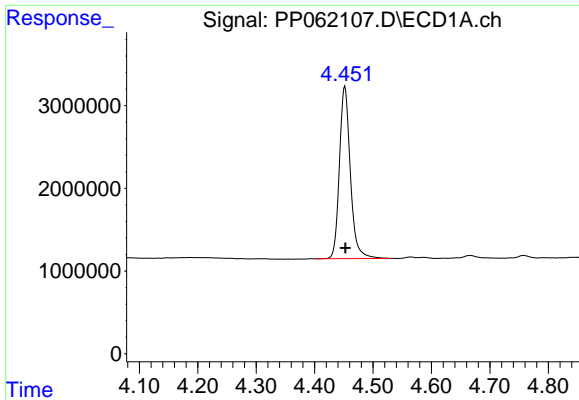
Manual Integrations
APPROVED

Reviewed By :Yogesh Patel 12/04/2023
 Supervised By :Ankita Jodhani 12/04/2023

Integration File signal 1: autoint1.e
 Integration File signal 2: autoint2.e
 Quant Time: Dec 02 01:16:41 2023
 Quant Method : Z:\pestpcbsrv\HPCHEM1\ECD_P\methods\PP112723.M
 Quant Title : GC EXTRACTABLES
 QLast Update : Tue Nov 28 04:28:00 2023
 Response via : Initial Calibration
 Integrator: ChemStation

Volume Inj. : 2 µl
 Signal #1 Phase : ZB-MR1 Signal #2 Phase: ZB-MR2
 Signal #1 Info : 30Mx0.32mmx 0.50µ Signal #2 Info : 30M x 0.32mm x 0.25µm



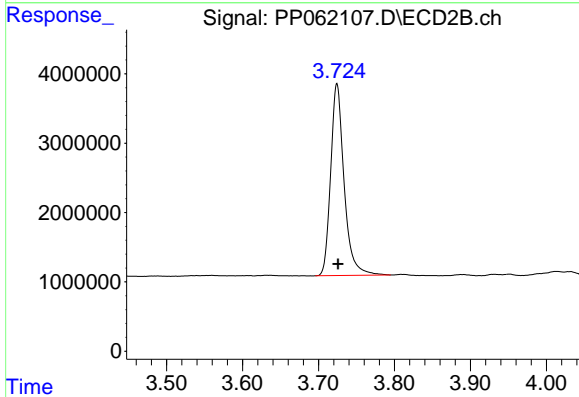


#1 Tetrachloro-m-xylene
 R.T.: 4.452 min
 Delta R.T.: -0.001 min
 Response: 27108234
 Conc: 20.59 ng/ml

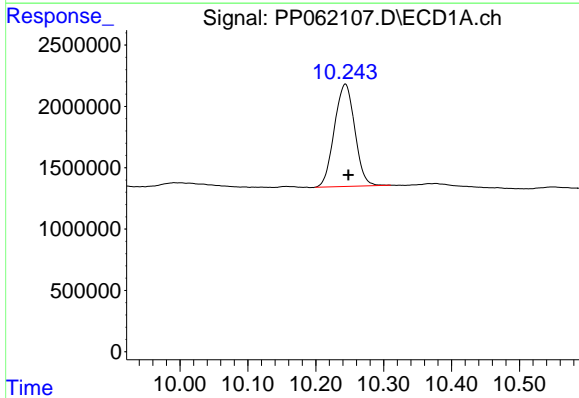
Instrument :
 ECD_P
 ClientSampleId :
 S4-4D

Manual Integrations
 APPROVED

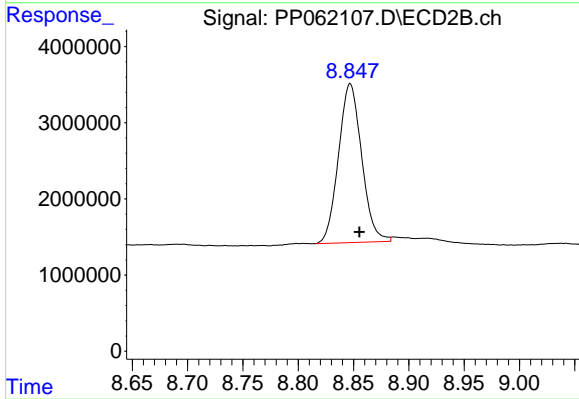
Reviewed By :Yogesh Patel 12/04/2023
 Supervised By :Ankita Jodhani 12/04/2023



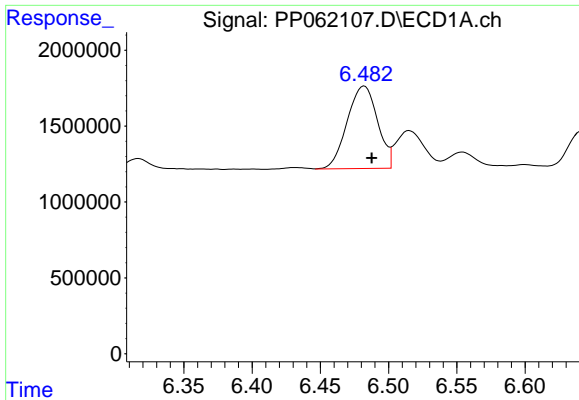
#1 Tetrachloro-m-xylene
 R.T.: 3.724 min
 Delta R.T.: -0.002 min
 Response: 34010443
 Conc: 18.90 ng/ml



#2 Decachlorobiphenyl
 R.T.: 10.244 min
 Delta R.T.: -0.005 min
 Response: 17449380
 Conc: 16.91 ng/ml



#2 Decachlorobiphenyl
 R.T.: 8.847 min
 Delta R.T.: -0.009 min
 Response: 30463891
 Conc: 14.76 ng/ml m



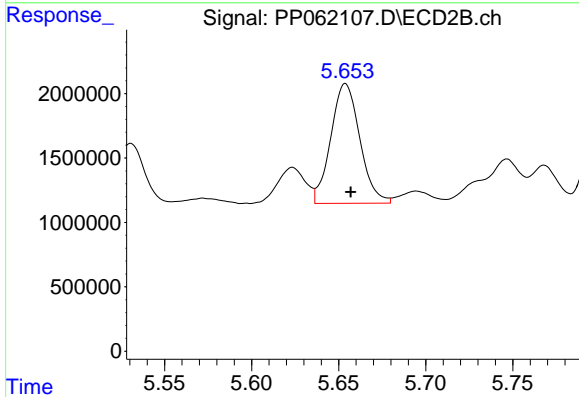
#26 AR-1254-1

R.T.: 6.482 min
 Delta R.T.: -0.005 min
 Response: 8397831
 Conc: 149.69 ng/ml

Instrument :
 ECD_P
 ClientSampleId :
 S4-4D

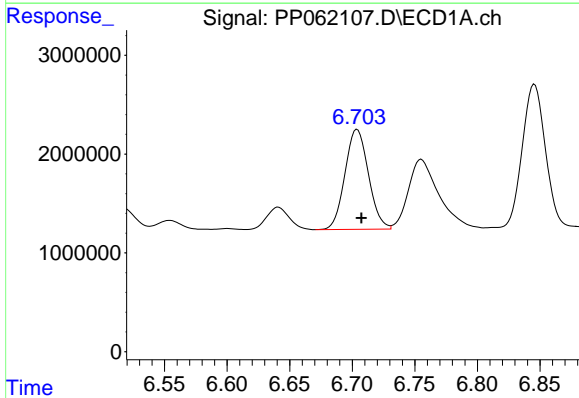
Manual Integrations
 APPROVED

Reviewed By :Yogesh Patel 12/04/2023
 Supervised By :Ankita Jodhani 12/04/2023



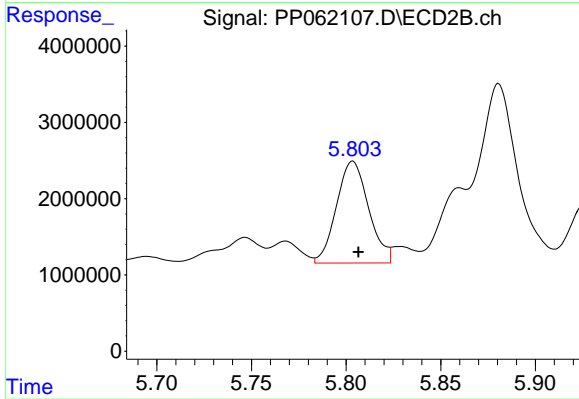
#26 AR-1254-1

R.T.: 5.654 min
 Delta R.T.: -0.003 min
 Response: 10822089
 Conc: 99.39 ng/ml



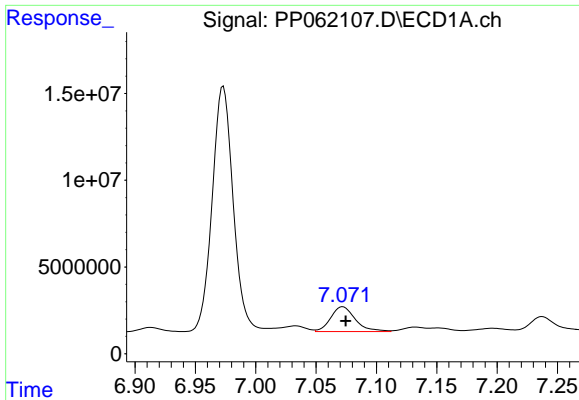
#27 AR-1254-2

R.T.: 6.704 min
 Delta R.T.: -0.003 min
 Response: 13234018
 Conc: 158.72 ng/ml



#27 AR-1254-2

R.T.: 5.804 min
 Delta R.T.: -0.003 min
 Response: 15814476
 Conc: 157.57 ng/ml



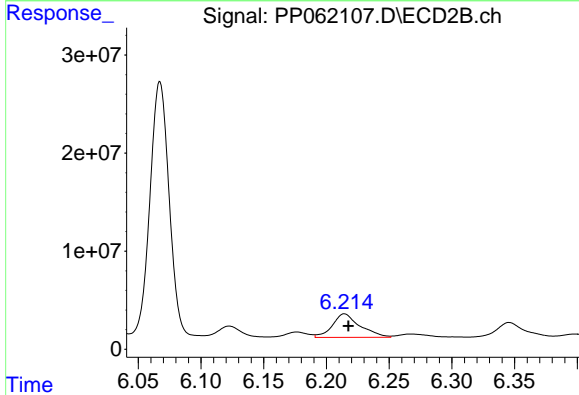
#28 AR-1254-3

R.T.: 7.072 min
 Delta R.T.: -0.002 min
 Response: 20365787
 Conc: 246.17 ng/ml

Instrument :
 ECD_P
 ClientSampleId :
 S4-4D

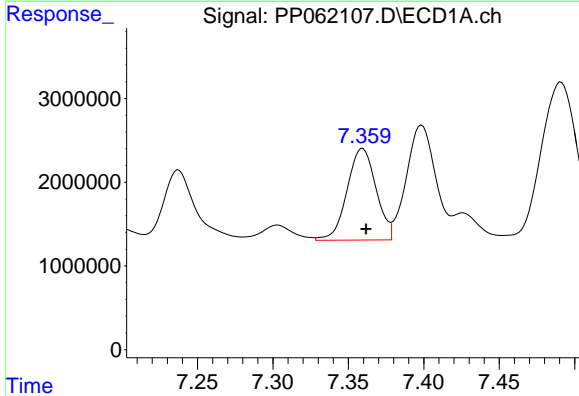
Manual Integrations
 APPROVED

Reviewed By :Yogesh Patel 12/04/2023
 Supervised By :Ankita Jodhani 12/04/2023



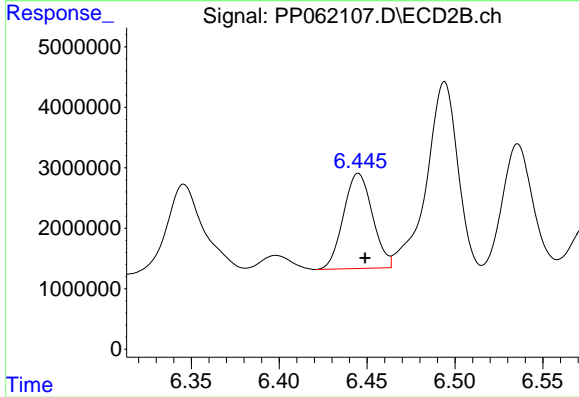
#28 AR-1254-3

R.T.: 6.214 min
 Delta R.T.: -0.003 min
 Response: 36619879
 Conc: 234.40 ng/ml



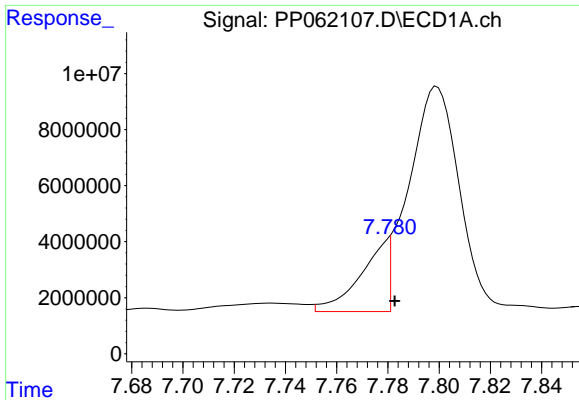
#29 AR-1254-4

R.T.: 7.360 min
 Delta R.T.: -0.002 min
 Response: 14601701
 Conc: 278.44 ng/ml



#29 AR-1254-4

R.T.: 6.445 min
 Delta R.T.: -0.004 min
 Response: 18043975
 Conc: 227.02 ng/ml



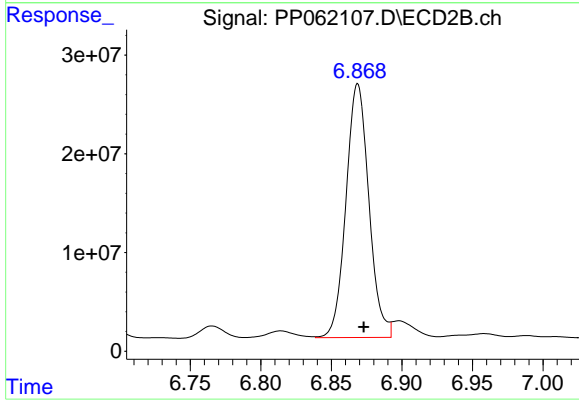
#30 AR-1254-5

R.T.: 7.780 min
 Delta R.T.: -0.003 min
 Response: 18716878
 Conc: 293.83 ng/ml

Instrument :
 ECD_P
 ClientSampleId :
 S4-4D

Manual Integrations
 APPROVED

Reviewed By :Yogesh Patel 12/04/2023
 Supervised By :Ankita Jodhani 12/04/2023



#30 AR-1254-5

R.T.: 6.869 min
 Delta R.T.: -0.004 min
 Response: 290541579
 Conc: 2058.72 ng/ml