

Data Path : Z:\pestpcbsrv\HPCHEM1\ECD_P\Data\PP120221\
 Data File : PP041568.D
 Signal(s) : Signal #1: ECD1A.CH Signal #2: ECD2B.CH
 Acq On : 02 Dec 2021 12:18
 Operator : AJ\MA
 Sample : AR1660CCC500
 Misc :
 ALS Vial : 3 Sample Multiplier: 1

Instrument :
 ECD_P
ClientSampleId :
 AR1660CCC500

Manual Integrations
APPROVED

Reviewed By :Ankita Jodhani 12/03/2021
 Supervised By :mohammad ahmed 12/06/2021

Integration File signal 1: autoint1.e
 Integration File signal 2: autoint2.e
 Quant Time: Dec 02 22:47:15 2021
 Quant Method : Z:\pestpcbsrv\HPCHEM1\ECD_P\methods\PP113021.M
 Quant Title : GC EXTRACTABLES
 QLast Update : Tue Nov 30 23:30:32 2021
 Response via : Initial Calibration
 Integrator: ChemStation 6890 Scale Mode: Small noise peaks clipped

Volume Inj. : 2 µl
 Signal #1 Phase : ZB-MR1 Signal #2 Phase: ZB-MR2
 Signal #1 Info : 30Mx0.32mmx 0.50µ Signal #2 Info : 30M x 0.32mm x 0.25µm

Compound	RT#1	RT#2	Resp#1	Resp#2	ng/ml	ng/ml

System Monitoring Compounds						
1) SA Tetrachlo...	4.746	3.750	1190473	1575631	52.794	51.871
2) SA Decachlor...	10.642	9.009	1101031	757662	51.133	49.023
Target Compounds						
3) L1 AR-1016-1	6.062	4.997	412994	477147	516.154	513.594
4) L1 AR-1016-2	6.085	5.016	623954	721744	523.684	508.419
5) L1 AR-1016-3	6.150	5.207	395792	408562	531.137	508.873
6) L1 AR-1016-4	6.257	5.260	320621	322227	528.147	511.374
7) L1 AR-1016-5	6.570	5.486	313147	347485	534.383	467.139
31) L7 AR-1260-1	7.743	6.580	517001	584078	523.709m	509.916m
32) L7 AR-1260-2	8.010	6.780	630840	723730	502.097m	551.347
33) L7 AR-1260-3	8.373	6.933	494056	635706	545.601	475.268
34) L7 AR-1260-4	8.604	7.415	576749	500556	538.955	508.361
35) L7 AR-1260-5	8.919	7.665	1071486	1055282	517.133	510.540

(f)=RT Delta > 1/2 Window (#)=Amounts differ by > 25% (m)=manual int.

Data Path : Z:\pestpcbsrv\HPCHEM1\ECD_P\Data\PP120221\
 Data File : PP041568.D
 Signal(s) : Signal #1: ECD1A.CH Signal #2: ECD2B.CH
 Acq On : 02 Dec 2021 12:18
 Operator : AJ\MA
 Sample : AR1660CCC500
 Misc :
 ALS Vial : 3 Sample Multiplier: 1

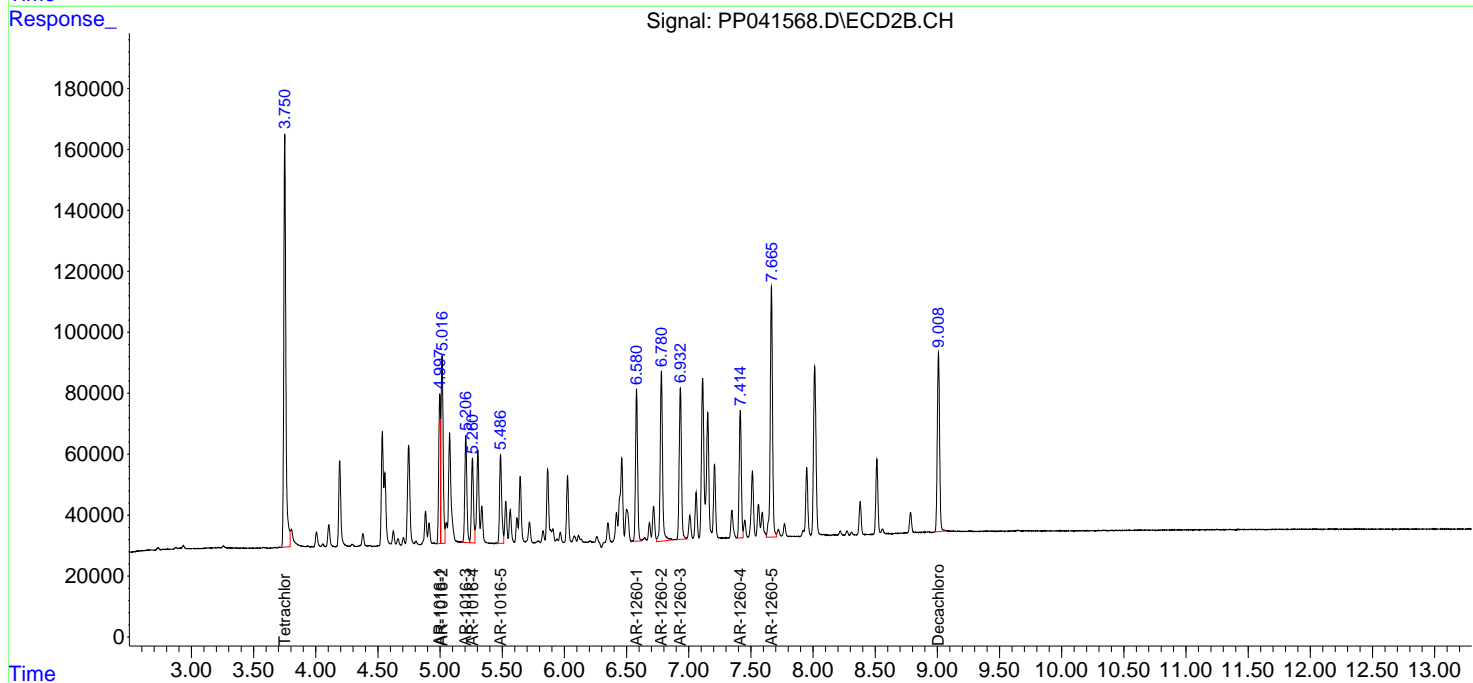
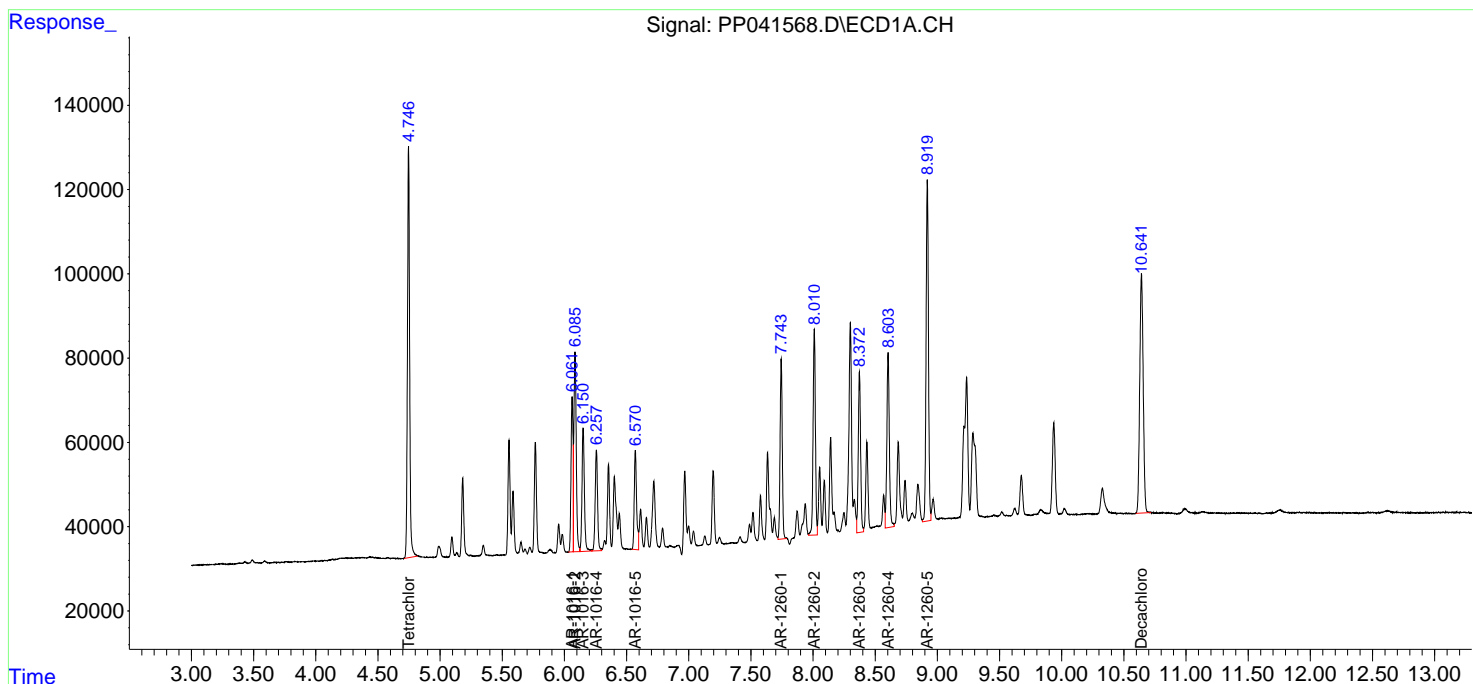
Instrument :
 ECD_P
 ClientSampleId :
 AR1660CCC500

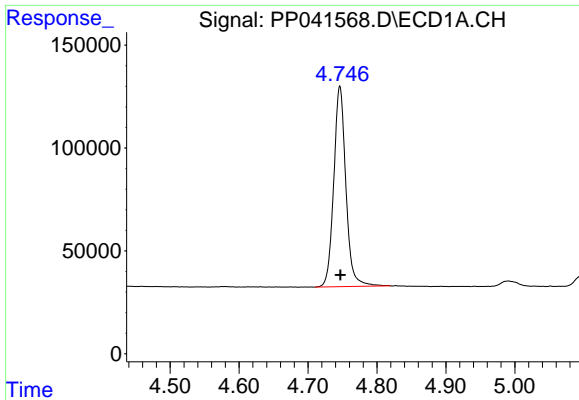
Manual Integrations
 APPROVED

Reviewed By :Ankita Jodhani 12/03/2021
 Supervised By :mohammad ahmed 12/06/2021

Integration File signal 1: autoint1.e
 Integration File signal 2: autoint2.e
 Quant Time: Dec 02 22:47:15 2021
 Quant Method : Z:\pestpcbsrv\HPCHEM1\ECD_P\methods\PP113021.M
 Quant Title : GC EXTRACTABLES
 QLast Update : Tue Nov 30 23:30:32 2021
 Response via : Initial Calibration
 Integrator: ChemStation 6890 Scale Mode: Small noise peaks clipped

Volume Inj. : 2 µl
 Signal #1 Phase : ZB-MR1 Signal #2 Phase: ZB-MR2
 Signal #1 Info : 30Mx0.32mmx 0.50µ Signal #2 Info : 30M x 0.32mm x 0.25µm



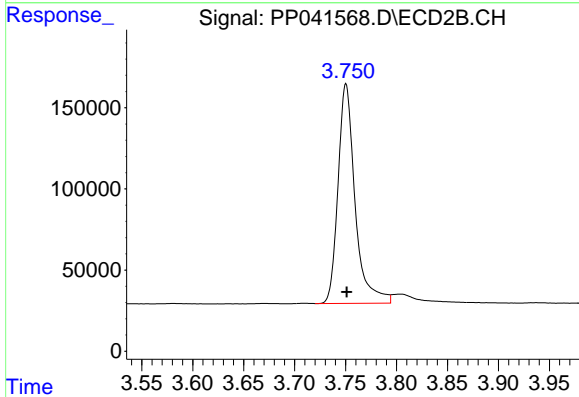


#1 Tetrachloro-m-xylene
 R.T.: 4.746 min
 Delta R.T.: 0.000 min
 Response: 1190473
 Conc: 52.79 ng/ml

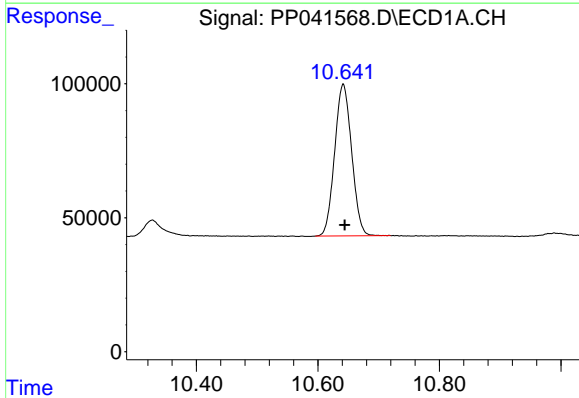
Instrument :
 ECD_P
 ClientSampleId :
 AR1660CCC500

Manual Integrations
 APPROVED

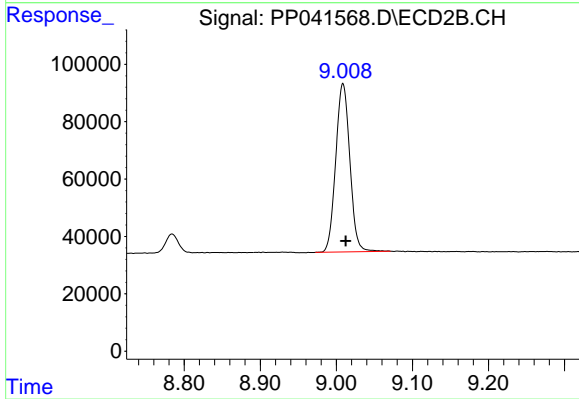
Reviewed By :Ankita Jodhani 12/03/2021
 Supervised By :mohammad ahmed 12/06/2021



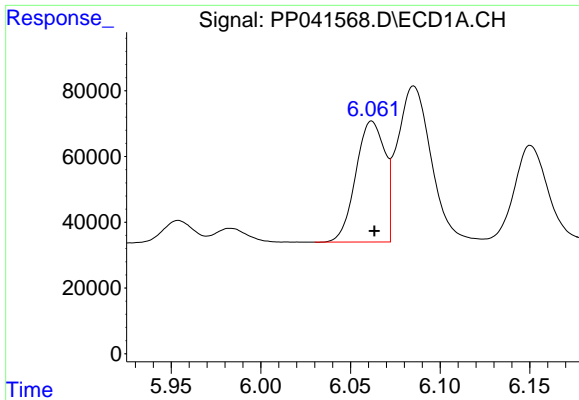
#1 Tetrachloro-m-xylene
 R.T.: 3.750 min
 Delta R.T.: 0.000 min
 Response: 1575631
 Conc: 51.87 ng/ml



#2 Decachlorobiphenyl
 R.T.: 10.642 min
 Delta R.T.: -0.002 min
 Response: 1101031
 Conc: 51.13 ng/ml



#2 Decachlorobiphenyl
 R.T.: 9.009 min
 Delta R.T.: -0.004 min
 Response: 757662
 Conc: 49.02 ng/ml



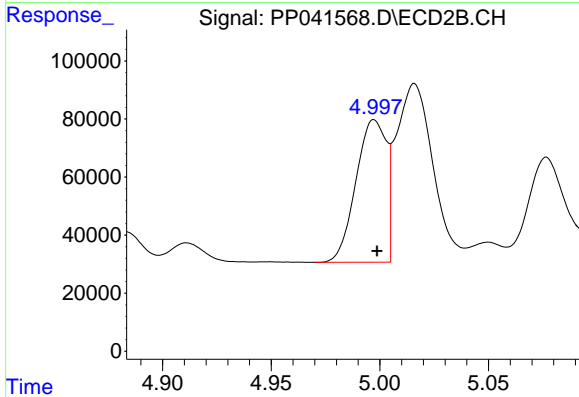
#3 AR-1016-1

R.T.: 6.062 min
 Delta R.T.: -0.001 min
 Response: 412994
 Conc: 516.15 ng/ml

Instrument :
 ECD_P
 ClientSampleId :
 AR1660CCC500

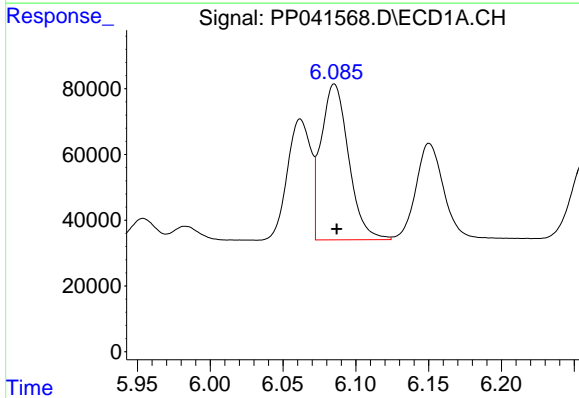
Manual Integrations
 APPROVED

Reviewed By :Ankita Jodhani 12/03/2021
 Supervised By :mohammad ahmed 12/06/2021



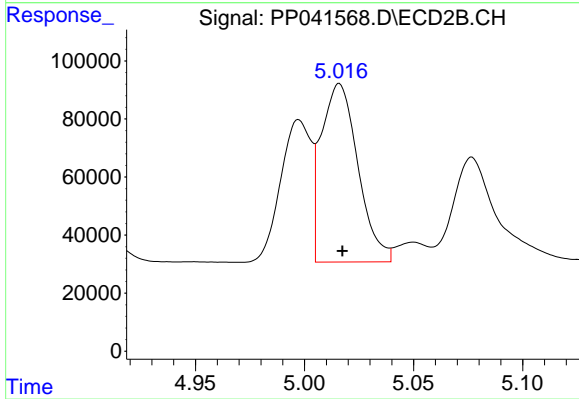
#3 AR-1016-1

R.T.: 4.997 min
 Delta R.T.: -0.001 min
 Response: 477147
 Conc: 513.59 ng/ml



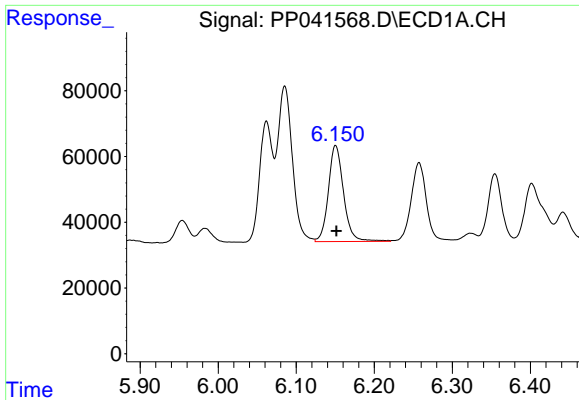
#4 AR-1016-2

R.T.: 6.085 min
 Delta R.T.: -0.002 min
 Response: 623954
 Conc: 523.68 ng/ml



#4 AR-1016-2

R.T.: 5.016 min
 Delta R.T.: -0.001 min
 Response: 721744
 Conc: 508.42 ng/ml

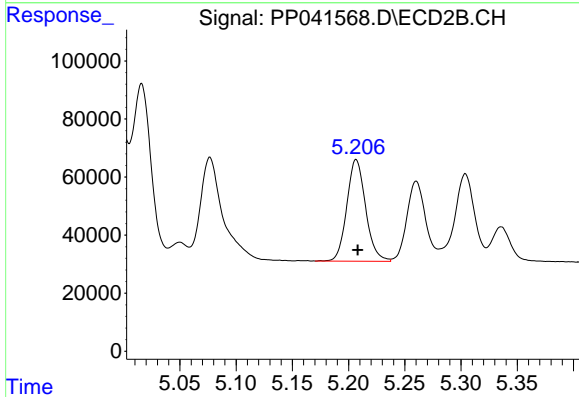


#5 AR-1016-3

R.T.: 6.150 min
 Delta R.T.: -0.001 min
 Response: 395792
 Conc: 531.14 ng/ml

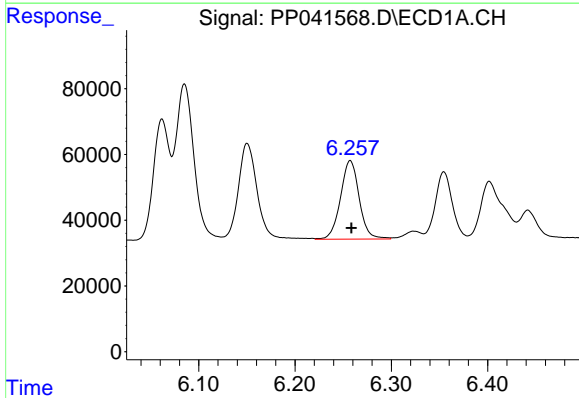
Instrument : ECD_P
 ClientSampleId : AR1660CCC500

Manual Integrations
APPROVED
 Reviewed By :Ankita Jodhani 12/03/2021
 Supervised By :mohammad ahmed 12/06/2021



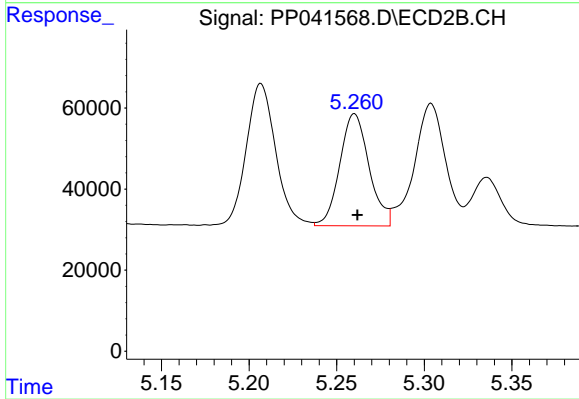
#5 AR-1016-3

R.T.: 5.207 min
 Delta R.T.: -0.001 min
 Response: 408562
 Conc: 508.87 ng/ml



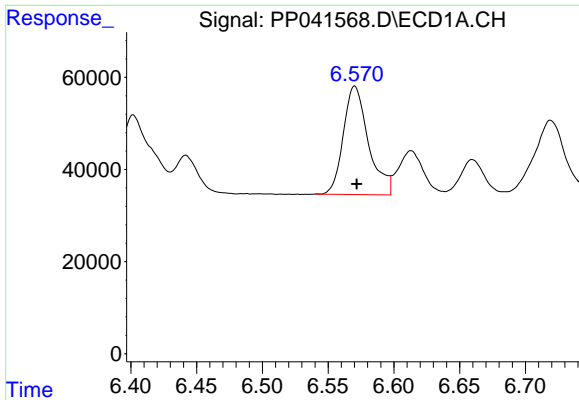
#6 AR-1016-4

R.T.: 6.257 min
 Delta R.T.: -0.001 min
 Response: 320621
 Conc: 528.15 ng/ml



#6 AR-1016-4

R.T.: 5.260 min
 Delta R.T.: -0.002 min
 Response: 322227
 Conc: 511.37 ng/ml



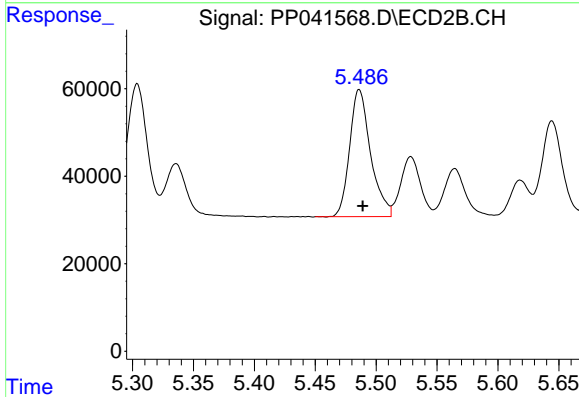
#7 AR-1016-5

R.T.: 6.570 min
 Delta R.T.: -0.002 min
 Response: 313147
 Conc: 534.38 ng/ml

Instrument :
 ECD_P
 ClientSampleId :
 AR1660CCC500

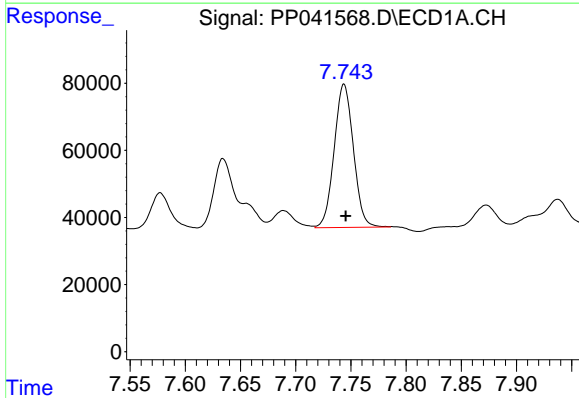
Manual Integrations
 APPROVED

Reviewed By :Ankita Jodhani 12/03/2021
 Supervised By :mohammad ahmed 12/06/2021



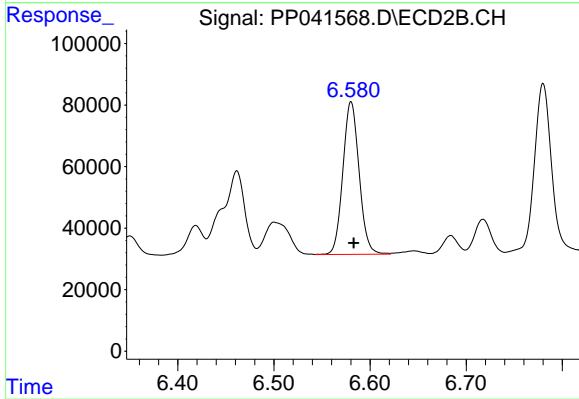
#7 AR-1016-5

R.T.: 5.486 min
 Delta R.T.: -0.003 min
 Response: 347485
 Conc: 467.14 ng/ml



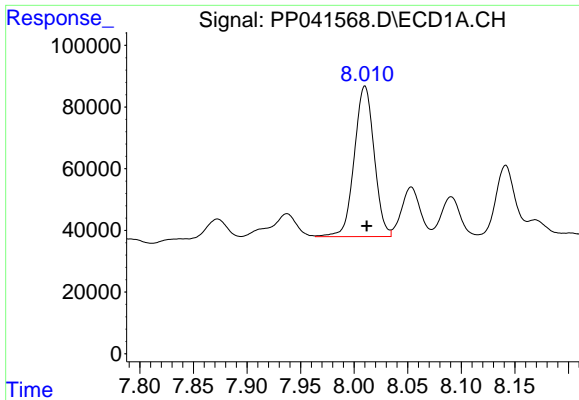
#31 AR-1260-1

R.T.: 7.743 min
 Delta R.T.: -0.002 min
 Response: 517001
 Conc: 523.71 ng/ml m



#31 AR-1260-1

R.T.: 6.580 min
 Delta R.T.: -0.003 min
 Response: 584078
 Conc: 509.92 ng/ml m



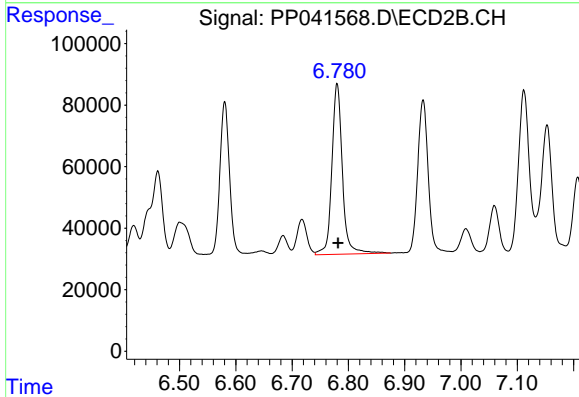
#32 AR-1260-2

R.T.: 8.010 min
 Delta R.T.: -0.002 min
 Response: 630840
 Conc: 502.10 ng/ml

Instrument :
 ECD_P
 ClientSampleId :
 AR1660CCC500

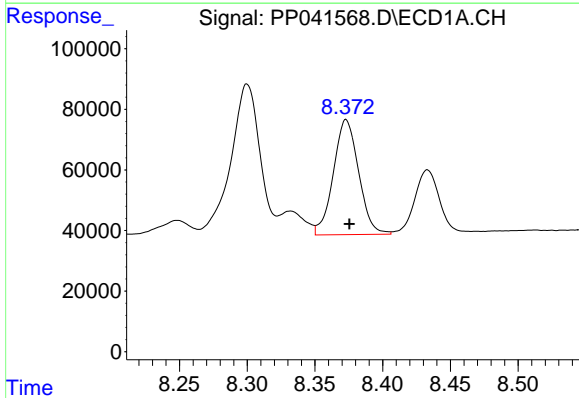
Manual Integrations
 APPROVED

Reviewed By :Ankita Jodhani 12/03/2021
 Supervised By :mohammad ahmed 12/06/2021



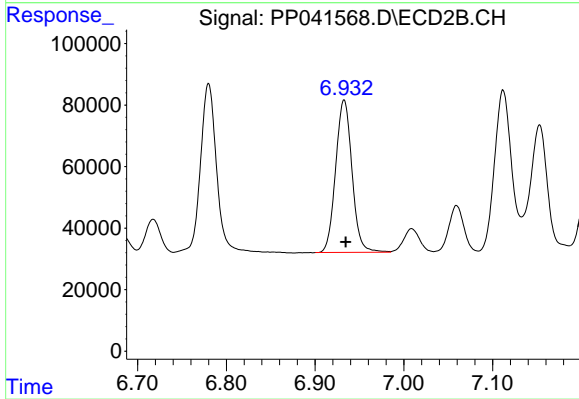
#32 AR-1260-2

R.T.: 6.780 min
 Delta R.T.: -0.002 min
 Response: 723730
 Conc: 551.35 ng/ml



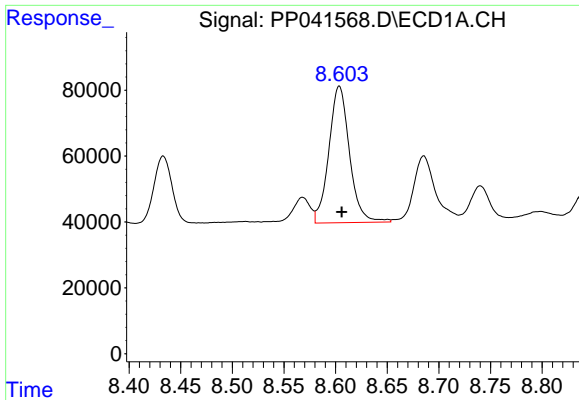
#33 AR-1260-3

R.T.: 8.373 min
 Delta R.T.: -0.003 min
 Response: 494056
 Conc: 545.60 ng/ml



#33 AR-1260-3

R.T.: 6.933 min
 Delta R.T.: -0.002 min
 Response: 635706
 Conc: 475.27 ng/ml



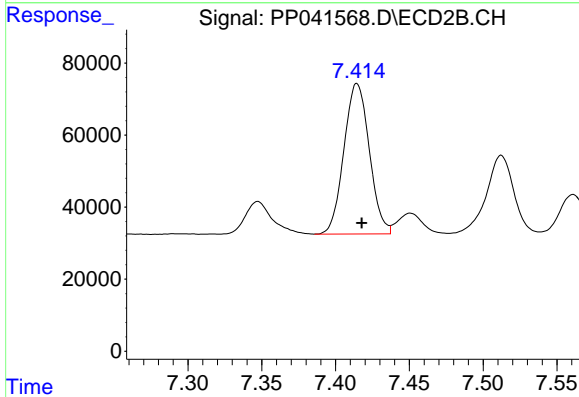
#34 AR-1260-4

R.T.: 8.604 min
 Delta R.T.: -0.002 min
 Response: 576749
 Conc: 538.95 ng/ml

Instrument : ECD_P
 ClientSampleId : AR1660CCC500

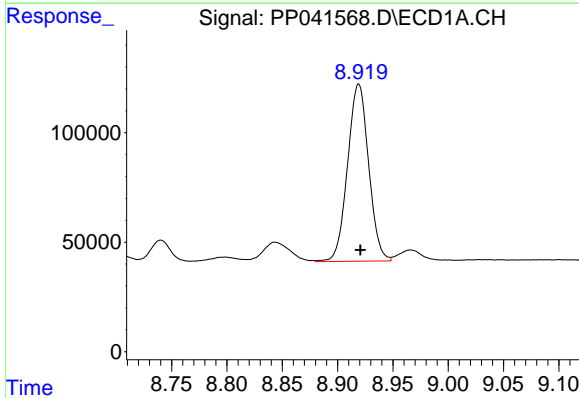
Manual Integrations
APPROVED

Reviewed By :Ankita Jodhani 12/03/2021
 Supervised By :mohammad ahmed 12/06/2021



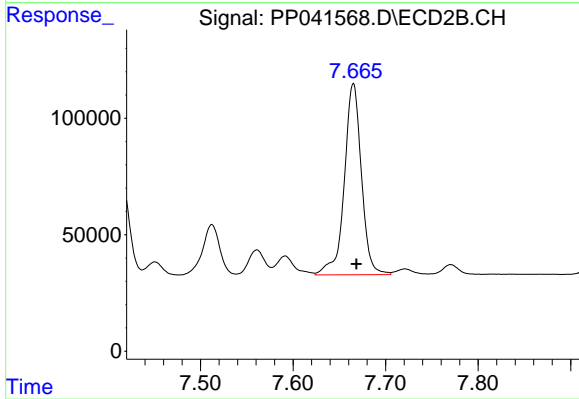
#34 AR-1260-4

R.T.: 7.415 min
 Delta R.T.: -0.003 min
 Response: 500556
 Conc: 508.36 ng/ml



#35 AR-1260-5

R.T.: 8.919 min
 Delta R.T.: -0.002 min
 Response: 1071486
 Conc: 517.13 ng/ml



#35 AR-1260-5

R.T.: 7.665 min
 Delta R.T.: -0.003 min
 Response: 1055282
 Conc: 510.54 ng/ml