

Data Path : Z:\pestpcbsrv\HPCHEM1\ECD_P\Data\PP120221\
 Data File : PP041579.D
 Signal(s) : Signal #1: ECD1A.CH Signal #2: ECD2B.CH
 Acq On : 02 Dec 2021 15:22
 Operator : AJ\MA
 Sample : M4068-01
 Misc : AR1262 LOD 40 PPB
 ALS Vial : 16 Sample Multiplier: 1

Instrument :
 ECD_P
ClientSampleId :
 LOD-MDL-SOIL-01-QT4-2021

Manual Integrations
APPROVED

Reviewed By :Ankita Jodhani 12/03/2021
 Supervised By :mohammad ahmed 12/06/2021

Integration File signal 1: autoint1.e
 Integration File signal 2: autoint2.e
 Quant Time: Dec 02 22:51:25 2021
 Quant Method : Z:\pestpcbsrv\HPCHEM1\ECD_P\methods\PP113021.M
 Quant Title : GC EXTRACTABLES
 QLast Update : Tue Nov 30 23:30:32 2021
 Response via : Initial Calibration
 Integrator: ChemStation 6890 Scale Mode: Small noise peaks clipped

Volume Inj. : 2 µl
 Signal #1 Phase : ZB-MR1 Signal #2 Phase: ZB-MR2
 Signal #1 Info : 30Mx0.32mmx 0.50µ Signal #2 Info : 30M x 0.32mm x 0.25µm

Compound	RT#1	RT#2	Resp#1	Resp#2	ng/ml	ng/ml

System Monitoring Compounds						
1) SA Tetrachlo...	4.746	3.751	528496	773492	23.437	25.464
2) SA Decachlor...	10.643	9.009	529050	373084	24.570	24.140
Target Compounds						
36) L8 AR-1262-1	8.375	7.112	58304	35302	45.915	47.233
37) L8 AR-1262-2	8.919	7.665	107431	106963	47.549m	50.698
38) L8 AR-1262-3	9.213	7.950	44640	45374	41.129m	50.915
39) L8 AR-1262-4	9.308	8.014	30514	78480	44.583m	48.867
40) L8 AR-1262-5	9.937	8.514	35816	35732	40.030	49.219

(f)=RT Delta > 1/2 Window (#)=Amounts differ by > 25% (m)=manual int.

Data Path : Z:\pestpcbsrv\HPCHEM1\ECD_P\Data\PP120221\
 Data File : PP041579.D
 Signal(s) : Signal #1: ECD1A.CH Signal #2: ECD2B.CH
 Acq On : 02 Dec 2021 15:22
 Operator : AJ\MA
 Sample : M4068-01
 Misc : AR1262 LOD 40 PPB
 ALS Vial : 16 Sample Multiplier: 1

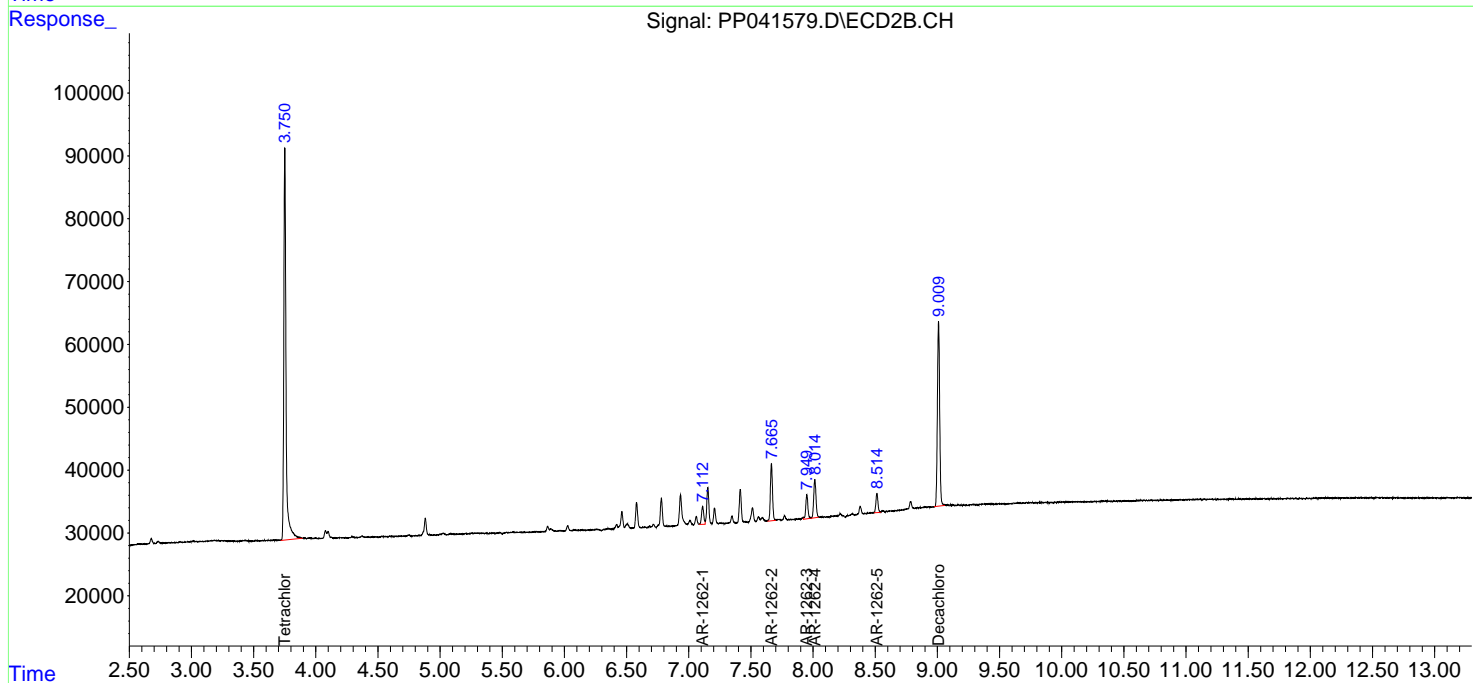
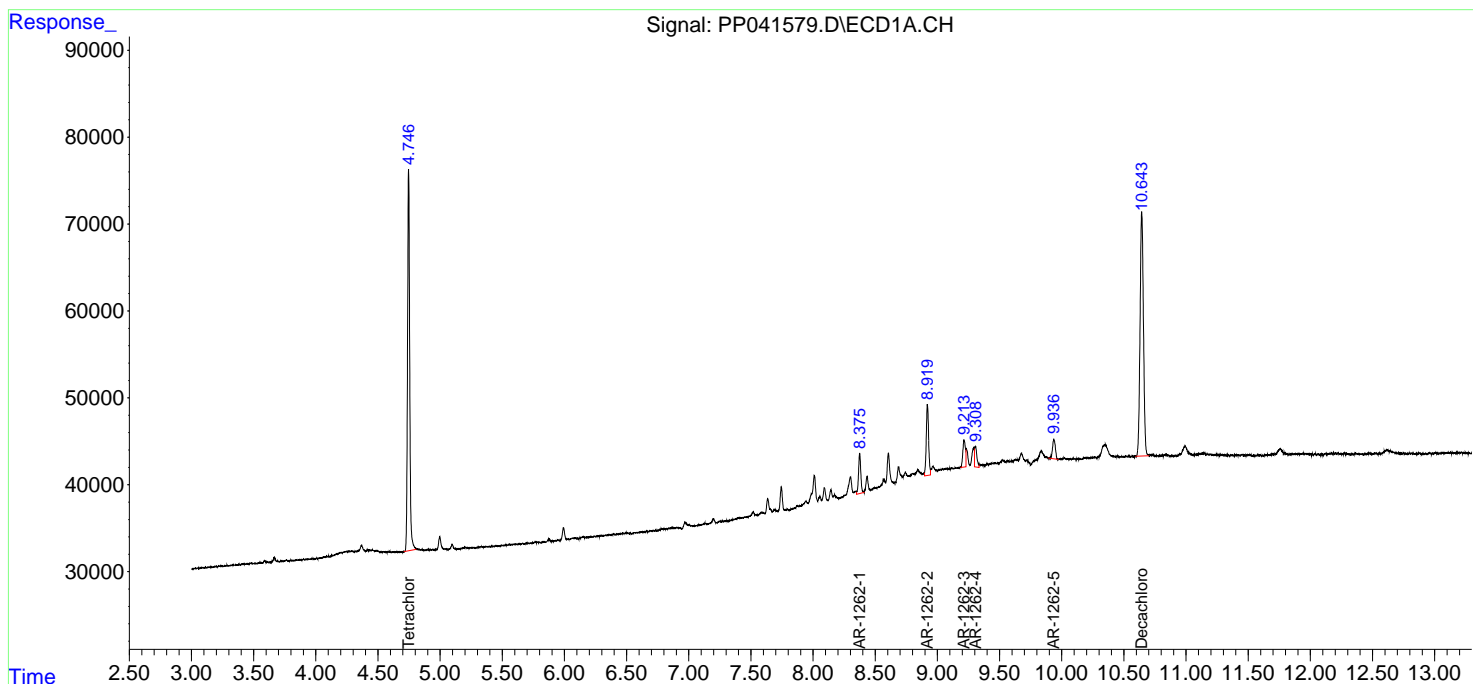
Instrument :
 ECD_P
ClientSampleId :
 LOD-MDL-SOIL-01-QT4-2021

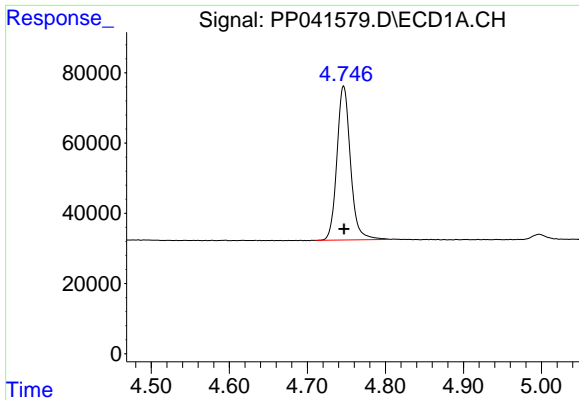
Manual Integrations
APPROVED

Reviewed By :Ankita Jodhani 12/03/2021
 Supervised By :mohammad ahmed 12/06/2021

Integration File signal 1: autoint1.e
 Integration File signal 2: autoint2.e
 Quant Time: Dec 02 22:51:25 2021
 Quant Method : Z:\pestpcbsrv\HPCHEM1\ECD_P\methods\PP113021.M
 Quant Title : GC EXTRACTABLES
 QLast Update : Tue Nov 30 23:30:32 2021
 Response via : Initial Calibration
 Integrator: ChemStation 6890 Scale Mode: Small noise peaks clipped

Volume Inj. : 2 µl
 Signal #1 Phase : ZB-MR1 Signal #2 Phase: ZB-MR2
 Signal #1 Info : 30Mx0.32mmx 0.50µ Signal #2 Info : 30M x 0.32mm x 0.25µm



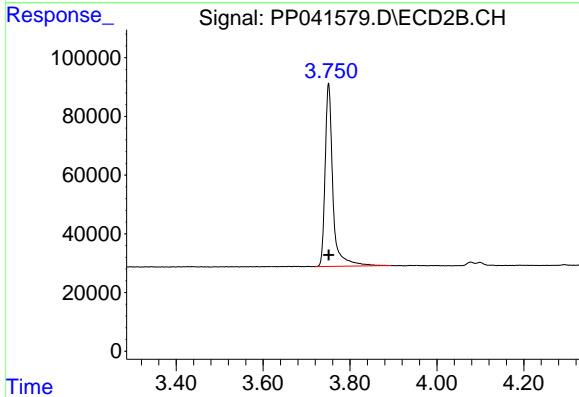


#1 Tetrachloro-m-xylene
 R.T.: 4.746 min
 Delta R.T.: 0.000 min
 Response: 528496
 Conc: 23.44 ng/ml

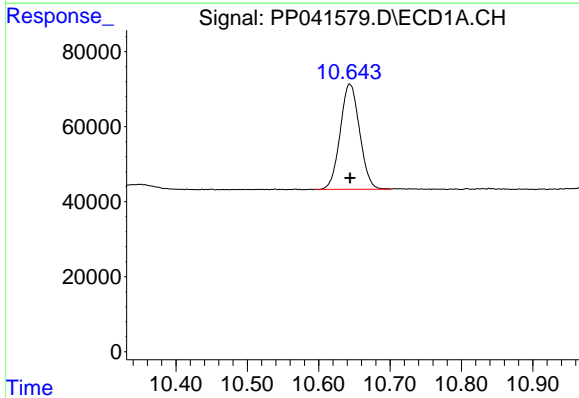
Instrument : ECD_P
 Client Sample Id : LOD-MDL-SOIL-01-QT4-2021

Manual Integrations
 APPROVED

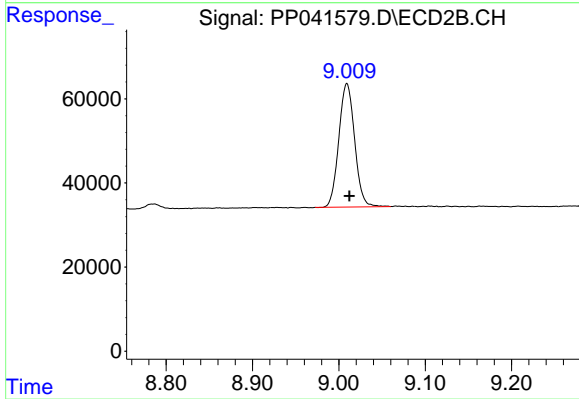
Reviewed By :Ankita Jodhani 12/03/2021
 Supervised By :mohammad ahmed 12/06/2021



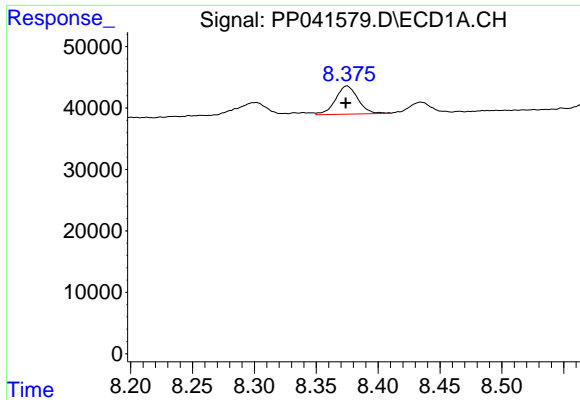
#1 Tetrachloro-m-xylene
 R.T.: 3.751 min
 Delta R.T.: 0.000 min
 Response: 773492
 Conc: 25.46 ng/ml



#2 Decachlorobiphenyl
 R.T.: 10.643 min
 Delta R.T.: 0.000 min
 Response: 529050
 Conc: 24.57 ng/ml



#2 Decachlorobiphenyl
 R.T.: 9.009 min
 Delta R.T.: -0.003 min
 Response: 373084
 Conc: 24.14 ng/ml



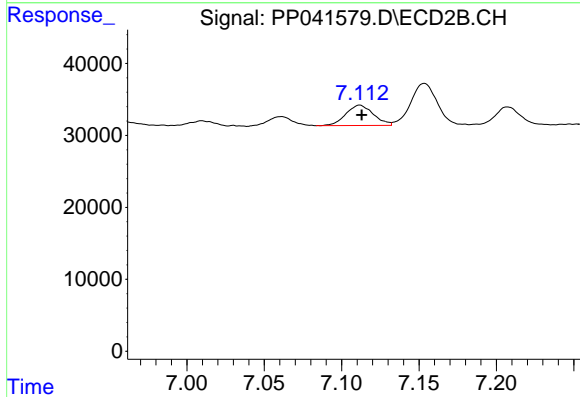
#36 AR-1262-1

R.T.: 8.375 min
 Delta R.T.: 0.000 min
 Response: 58304
 Conc: 45.91 ng/ml

Instrument : ECD_P
 ClientSampleId : LOD-MDL-SOIL-01-QT4-2021

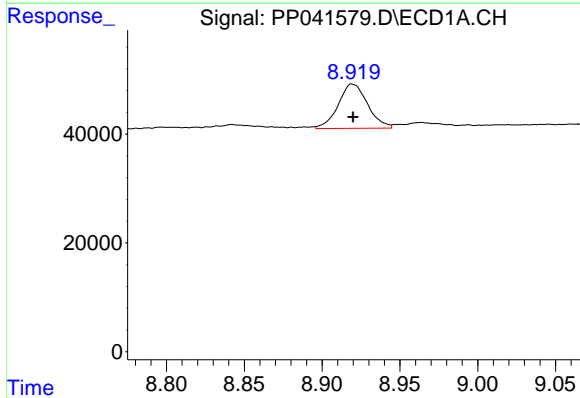
Manual Integrations
 APPROVED

Reviewed By :Ankita Jodhani 12/03/2021
 Supervised By :mohammad ahmed 12/06/2021



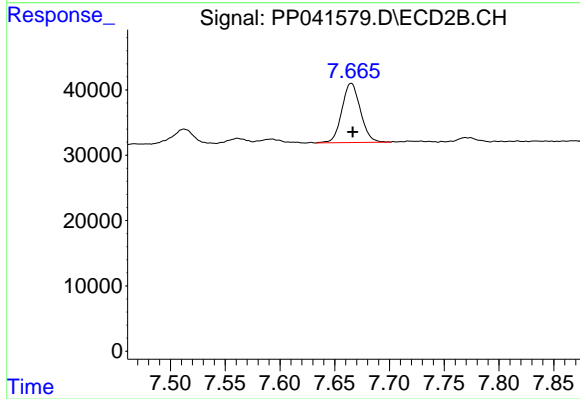
#36 AR-1262-1

R.T.: 7.112 min
 Delta R.T.: -0.001 min
 Response: 35302
 Conc: 47.23 ng/ml



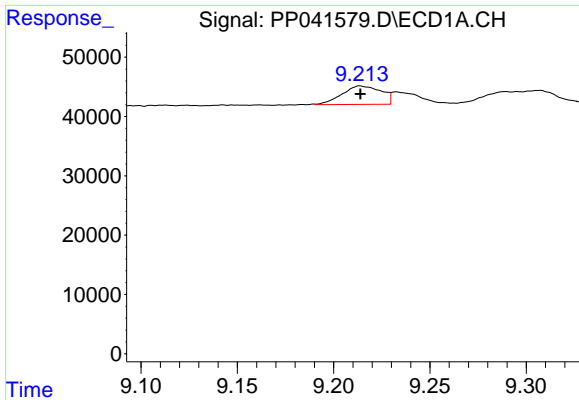
#37 AR-1262-2

R.T.: 8.919 min
 Delta R.T.: -0.001 min
 Response: 107431
 Conc: 47.55 ng/ml m



#37 AR-1262-2

R.T.: 7.665 min
 Delta R.T.: -0.001 min
 Response: 106963
 Conc: 50.70 ng/ml



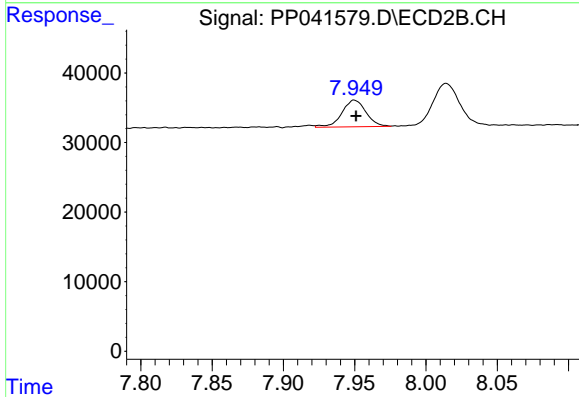
#38 AR-1262-3

R.T.: 9.213 min
 Delta R.T.: 0.000 min
 Response: 44640
 Conc: 41.13 ng/ml

Instrument : ECD_P
 ClientSampleId : LOD-MDL-SOIL-01-QT4-2021

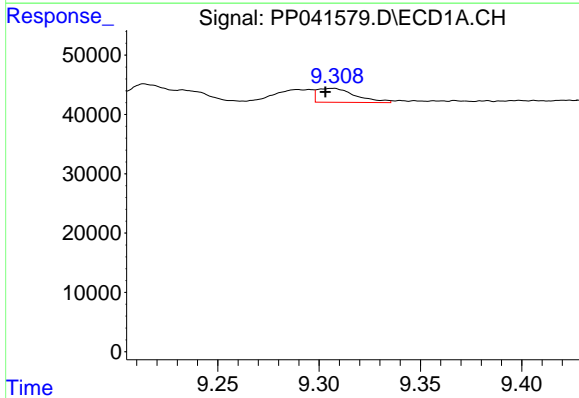
Manual Integrations
 APPROVED

Reviewed By :Ankita Jodhani 12/03/2021
 Supervised By :mohammad ahmed 12/06/2021



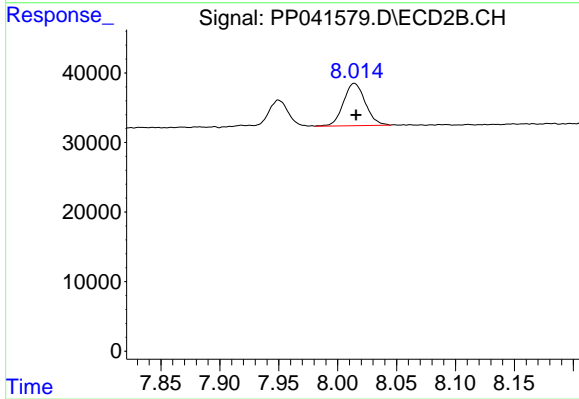
#38 AR-1262-3

R.T.: 7.950 min
 Delta R.T.: -0.001 min
 Response: 45374
 Conc: 50.92 ng/ml



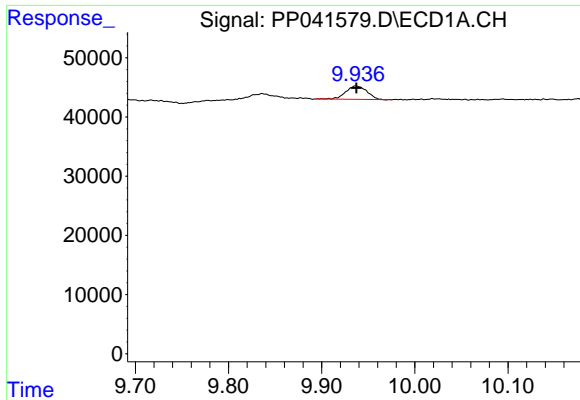
#39 AR-1262-4

R.T.: 9.308 min
 Delta R.T.: 0.004 min
 Response: 30514
 Conc: 44.58 ng/ml m



#39 AR-1262-4

R.T.: 8.014 min
 Delta R.T.: -0.001 min
 Response: 78480
 Conc: 48.87 ng/ml



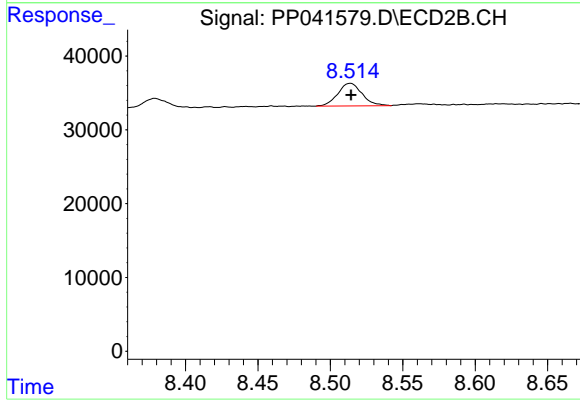
#40 AR-1262-5

R.T.: 9.937 min
 Delta R.T.: 0.000 min
 Response: 35816
 Conc: 40.03 ng/ml

Instrument : ECD_P
 ClientSampleId : LOD-MDL-SOIL-01-QT4-2021

Manual Integrations
 APPROVED

Reviewed By :Ankita Jodhani 12/03/2021
 Supervised By :mohammad ahmed 12/06/2021



#40 AR-1262-5

R.T.: 8.514 min
 Delta R.T.: 0.000 min
 Response: 35732
 Conc: 49.22 ng/ml