

Data Path : Z:\pestpcbsrv\HPCHEM1\ECD_P\Data\PP120222\
 Data File : PP053621.D
 Signal(s) : Signal #1: ECD1A.ch Signal #2: ECD2B.ch
 Acq On : 02 Dec 2022 09:18
 Operator : YP\AJ
 Sample : AR1660CCC500
 Misc :
 ALS Vial : 3 Sample Multiplier: 1

Instrument :
 ECD_P
 ClientSampleId :
 AR1660CCC500

Integration File signal 1: autoint1.e
 Integration File signal 2: autoint2.e
 Quant Time: Dec 02 21:38:23 2022
 Quant Method : Z:\pestpcbsrv\HPCHEM1\ECD_P\methods\PP110822.M
 Quant Title : GC EXTRACTABLES
 QLast Update : Wed Nov 09 05:50:05 2022
 Response via : Initial Calibration
 Integrator: ChemStation

Volume Inj. : 2 µl
 Signal #1 Phase : ZB-MR1 Signal #2 Phase: ZB-MR2
 Signal #1 Info : 30Mx0.32mmx 0.50µ Signal #2 Info : 30M x 0.32mm x 0.25µm

Compound	RT#1	RT#2	Resp#1	Resp#2	ng/ml	ng/ml
System Monitoring Compounds						
1) SA Tetrachlo...	4.398	3.644	89623562	78437750	46.622	52.144
2) SA Decachlor...	10.193	8.718	71295622	86478751	52.580	46.138
Target Compounds						
3) L1 AR-1016-1	5.570	4.741	29134493	27863036	468.326	496.790
4) L1 AR-1016-2	5.593	4.760	42800323	39687971	463.071	511.325
5) L1 AR-1016-3	5.655	4.939	26308159	20924058	464.837	498.316
6) L1 AR-1016-4	5.754	4.981	21203886	17687912	466.142	506.083
7) L1 AR-1016-5	6.050	5.197	20373157	22006667	450.088	484.513
8) L2 AR-1221-1	4.602	3.857	3040772	2874237	135.292	150.534
9) L2 AR-1221-2	4.694	3.946	4237306	4188869	255.011	285.968
10) L2 AR-1221-3	4.769	4.022	16142514	15767179	320.521	351.056
11) L3 AR-1232-1	4.769	4.022	16142514	15767179	420.968	466.577
12) L3 AR-1232-2	5.301	4.760	22104418	39687971	982.080	1140.262
13) L3 AR-1232-3	5.593	4.939	42800323	20924058	1054.515	1121.510
14) L3 AR-1232-4	5.754	5.023	21203886	21718250	1050.625	1233.732
15) L3 AR-1232-5	5.846	5.197	18457678	22006667	1113.182	1105.743
16) L4 AR-1242-1	5.570	4.741	29134493	27863036	597.831	631.973
17) L4 AR-1242-2	5.593	4.760	42800323	39687971	593.667	641.721
18) L4 AR-1242-3	5.655	4.939	26308159	20924058	587.460	630.029
19) L4 AR-1242-4	5.754	5.023	21203886	21718250	589.596	621.222
20) L4 AR-1242-5	6.494	5.554	3669484	19404736	100.508	443.123 #
21) L5 AR-1248-1	5.570	4.741	29134493	27863036	781.141	812.663
22) L5 AR-1248-2	5.846	4.981	18457678	17687912	337.356	368.327
23) L5 AR-1248-3	6.050	5.023	20373157	21718250	341.896	438.288 #
24) L5 AR-1248-4	6.454	5.197	3741944	22006667	60.651	372.623 #
25) L5 AR-1248-5	6.494	5.595	3669484	2986756	60.832	54.291
26) L6 AR-1254-1	6.430	5.554	18384854	19404736	260.053	214.061
27) L6 AR-1254-2	6.648	5.703	19935768	18938674	189.775	233.250
28) L6 AR-1254-3	7.017	6.126	11656183	33431735	113.638	263.005 #
29) L6 AR-1254-4	7.303	6.342	7929976	6117296	113.988	77.578 #
30) L6 AR-1254-5	7.724	6.764	54930412	63003897	693.506	498.805 #
31) L7 AR-1260-1	7.182	6.243	37181904	46792976	454.700	510.454
32) L7 AR-1260-2	7.440	6.433	45058538	55257106	486.551	480.194
33) L7 AR-1260-3	7.800	6.589	30242519	51143662	484.901	476.606
34) L7 AR-1260-4	8.027	7.065	37463766	37778726	500.095	456.629
35) L7 AR-1260-5	8.350	7.308	63686441	84818576	503.186	447.936
36) L8 AR-1262-1	7.800	6.856	30242519	20755687	314.734	394.156 #
37) L8 AR-1262-2	8.350	7.065	63686441	37778726	420.731	325.779
38) L8 AR-1262-3	8.679	7.594	40805770	17033247	393.858	185.956 #
39) L8 AR-1262-4	8.737f	7.657	24775599	61484113	306.408	374.885
40) L8 AR-1262-5	9.424	8.158	15020096	19787171	295.414	260.469
41) L9 AR-1268-1	8.679	7.594	40805770	17033247	215.367	63.728 #

Data Path : Z:\pestpcbsrv\HPCHEM1\ECD_P\Data\PP120222\
 Data File : PP053621.D
 Signal(s) : Signal #1: ECD1A.ch Signal #2: ECD2B.ch
 Acq On : 02 Dec 2022 09:18
 Operator : YP\AJ
 Sample : AR1660CCC500
 Misc :
 ALS Vial : 3 Sample Multiplier: 1

Instrument :
 ECD_P
 ClientSampleId :
 AR1660CCC500

Integration File signal 1: autoint1.e
 Integration File signal 2: autoint2.e
 Quant Time: Dec 02 21:38:23 2022
 Quant Method : Z:\pestpcbsrv\HPCHEM1\ECD_P\methods\PP110822.M
 Quant Title : GC EXTRACTABLES
 QLast Update : Wed Nov 09 05:50:05 2022
 Response via : Initial Calibration
 Integrator: ChemStation

Volume Inj. : 2 µl
 Signal #1 Phase : ZB-MR1 Signal #2 Phase: ZB-MR2
 Signal #1 Info : 30Mx0.32mmx 0.50µ Signal #2 Info : 30M x 0.32mm x 0.25µm

	Compound	RT#1	RT#2	Resp#1	Resp#2	ng/ml	ng/ml
42)	L9 AR-1268-2	8.737f	7.657	24775599	61484113	146.060	257.497 #
43)	L9 AR-1268-3	8.991	7.866	1183148	1384129	7.902	6.732
44)	L9 AR-1268-4	9.424	8.158	15020096	19787171	268.351	240.388
45)	L9 AR-1268-5	9.847	8.456	5465087	7094955	11.864	10.691

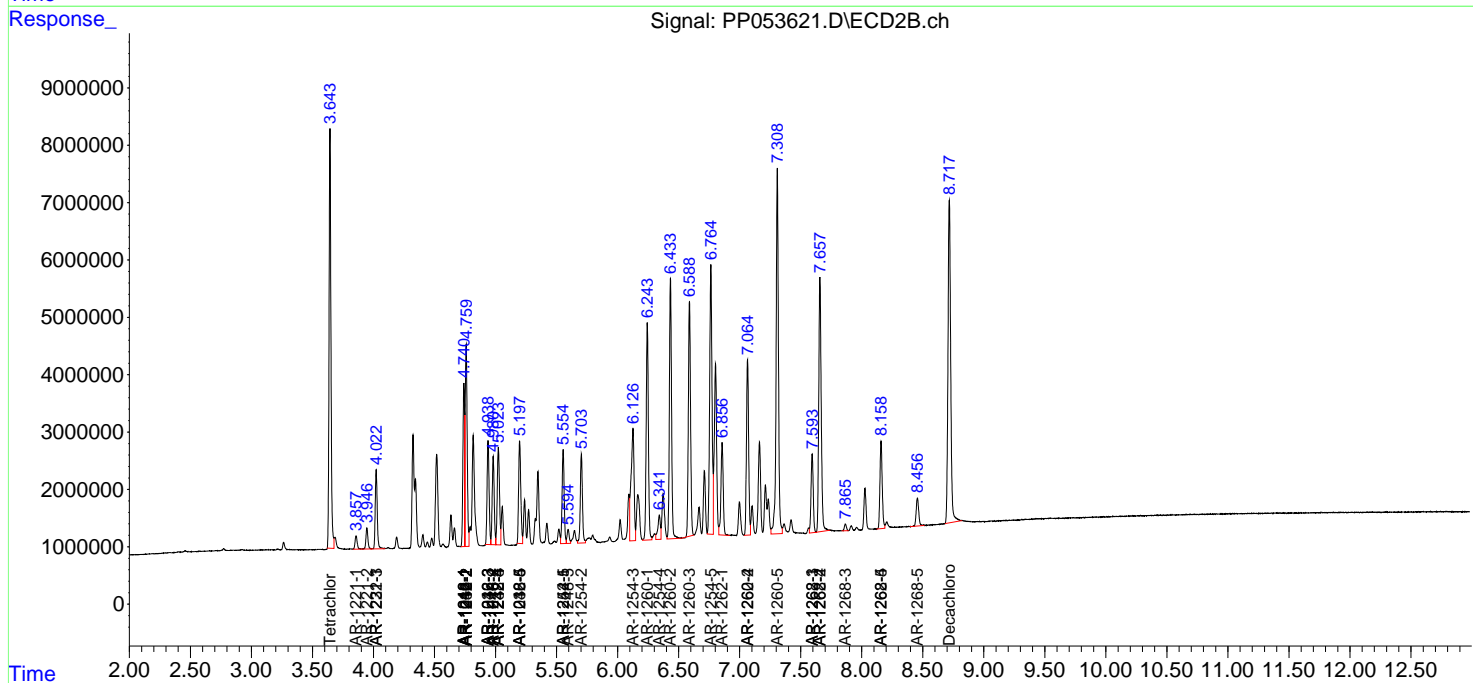
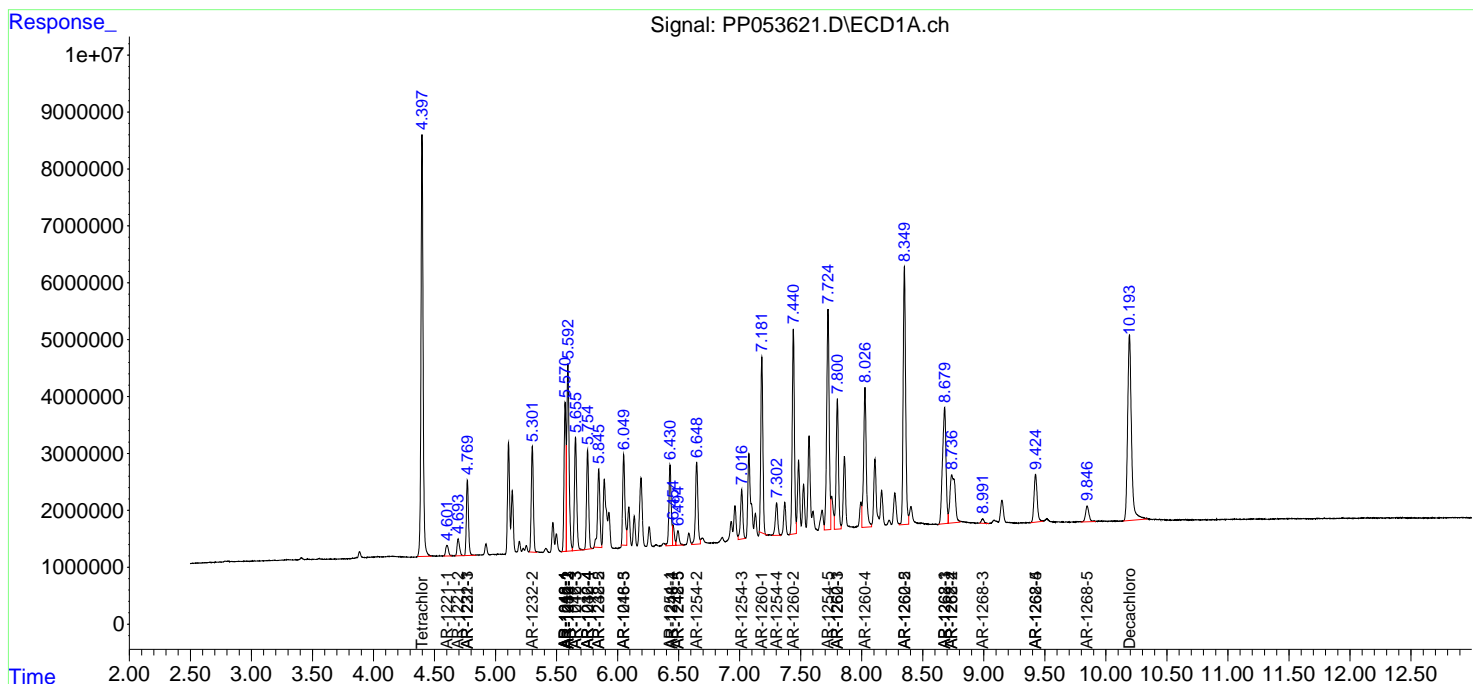
(f)=RT Delta > 1/2 Window (#)=Amounts differ by > 25% (m)=manual int.

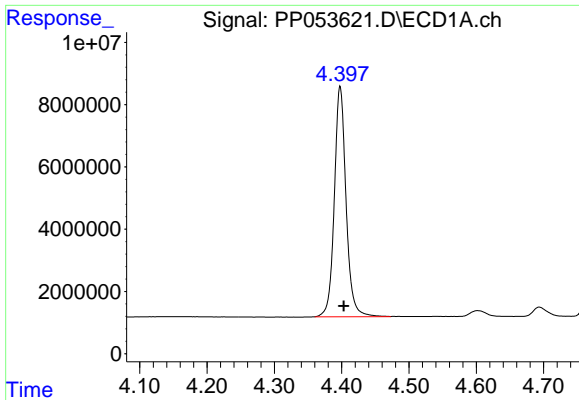
Data Path : Z:\pestpcbsrv\HPCHEM1\ECD_P\Data\PP120222\
 Data File : PP053621.D
 Signal(s) : Signal #1: ECD1A.ch Signal #2: ECD2B.ch
 Acq On : 02 Dec 2022 09:18
 Operator : YP\AJ
 Sample : AR1660CCC500
 Misc :
 ALS Vial : 3 Sample Multiplier: 1

Instrument :
 ECD_P
 ClientSampleId :
 AR1660CCC500

Integration File signal 1: autoint1.e
 Integration File signal 2: autoint2.e
 Quant Time: Dec 02 21:38:23 2022
 Quant Method : Z:\pestpcbsrv\HPCHEM1\ECD_P\methods\PP110822.M
 Quant Title : GC EXTRACTABLES
 QLast Update : Wed Nov 09 05:50:05 2022
 Response via : Initial Calibration
 Integrator: ChemStation

Volume Inj. : 2 µl
 Signal #1 Phase : ZB-MR1 Signal #2 Phase: ZB-MR2
 Signal #1 Info : 30Mx0.32mmx 0.50µ Signal #2 Info : 30M x 0.32mm x 0.25µm

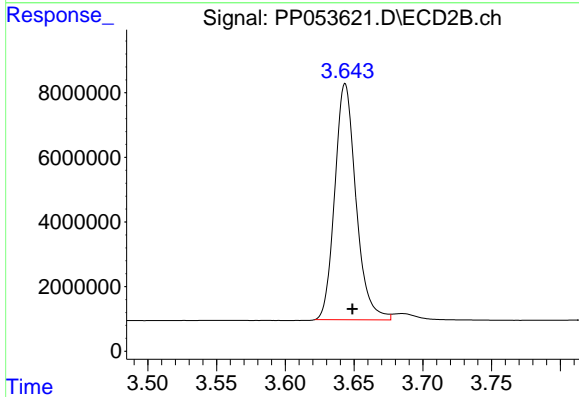




#1 Tetrachloro-m-xylene

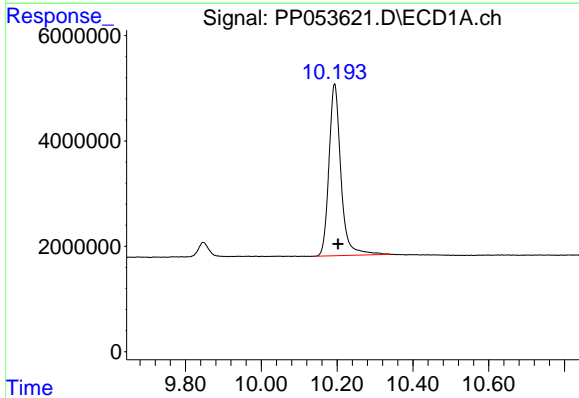
R.T.: 4.398 min
 Delta R.T.: -0.005 min
 Response: 89623562
 Conc: 46.62 ng/ml

Instrument :
 ECD_P
 ClientSampleId :
 AR1660CCC500



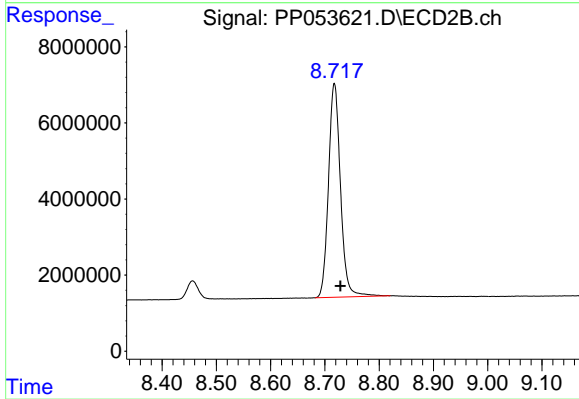
#1 Tetrachloro-m-xylene

R.T.: 3.644 min
 Delta R.T.: -0.005 min
 Response: 78437750
 Conc: 52.14 ng/ml



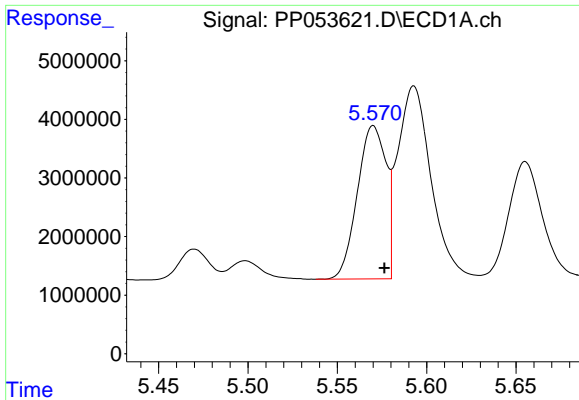
#2 Decachlorobiphenyl

R.T.: 10.193 min
 Delta R.T.: -0.009 min
 Response: 71295622
 Conc: 52.58 ng/ml



#2 Decachlorobiphenyl

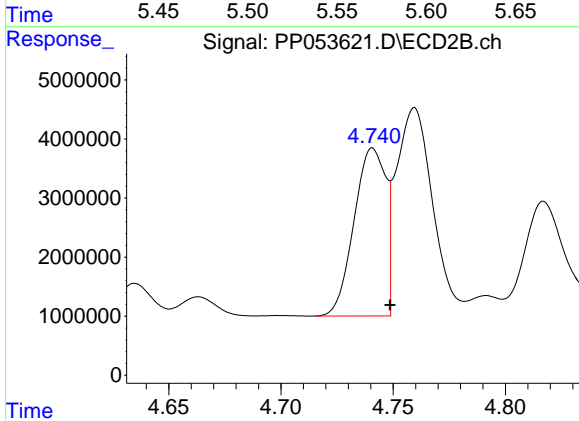
R.T.: 8.718 min
 Delta R.T.: -0.011 min
 Response: 86478751
 Conc: 46.14 ng/ml



#3 AR-1016-1

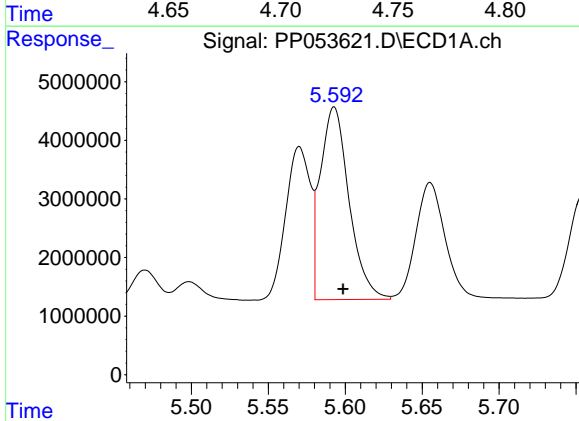
R.T.: 5.570 min
 Delta R.T.: -0.006 min
 Response: 29134493
 Conc: 468.33 ng/ml

Instrument :
 ECD_P
 ClientSampleId :
 AR1660CCC500



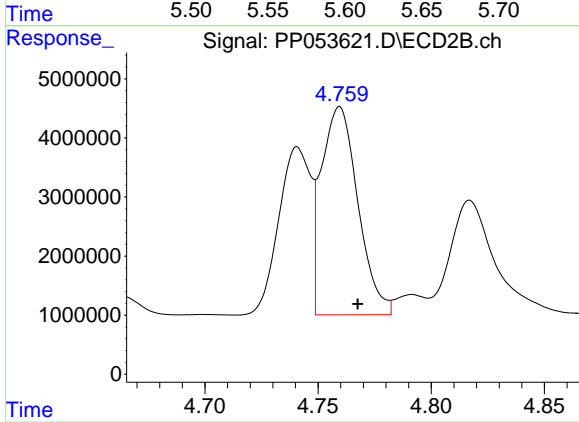
#3 AR-1016-1

R.T.: 4.741 min
 Delta R.T.: -0.008 min
 Response: 27863036
 Conc: 496.79 ng/ml



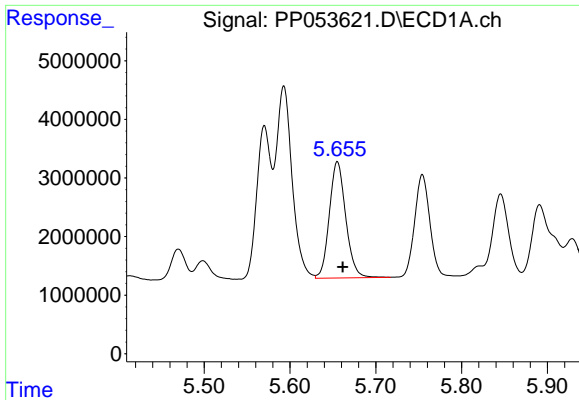
#4 AR-1016-2

R.T.: 5.593 min
 Delta R.T.: -0.006 min
 Response: 42800323
 Conc: 463.07 ng/ml



#4 AR-1016-2

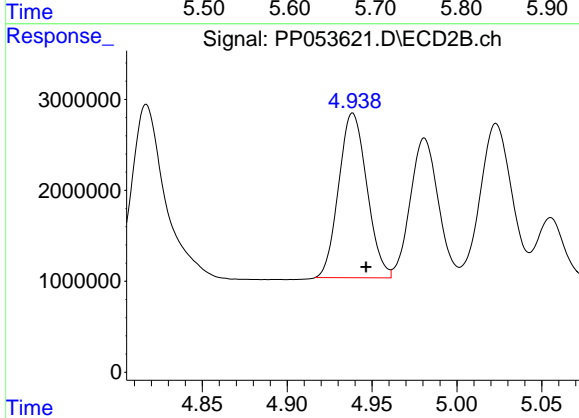
R.T.: 4.760 min
 Delta R.T.: -0.008 min
 Response: 39687971
 Conc: 511.32 ng/ml



#5 AR-1016-3

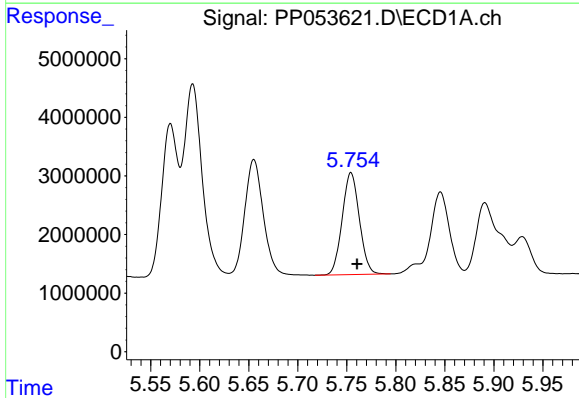
R.T.: 5.655 min
 Delta R.T.: -0.006 min
 Response: 26308159
 Conc: 464.84 ng/ml

Instrument :
 ECD_P
 ClientSampleId :
 AR1660CCC500



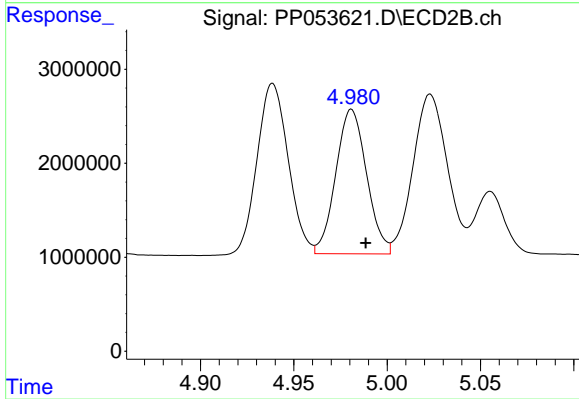
#5 AR-1016-3

R.T.: 4.939 min
 Delta R.T.: -0.008 min
 Response: 20924058
 Conc: 498.32 ng/ml



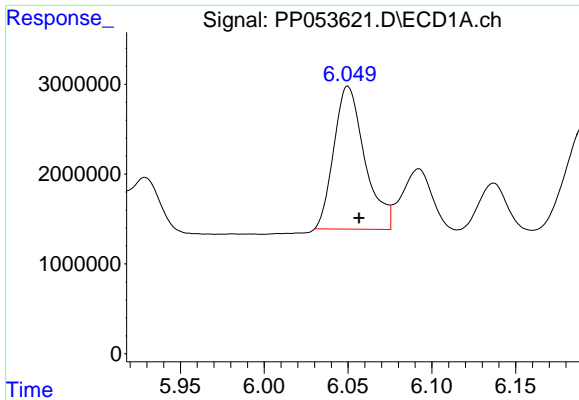
#6 AR-1016-4

R.T.: 5.754 min
 Delta R.T.: -0.006 min
 Response: 21203886
 Conc: 466.14 ng/ml



#6 AR-1016-4

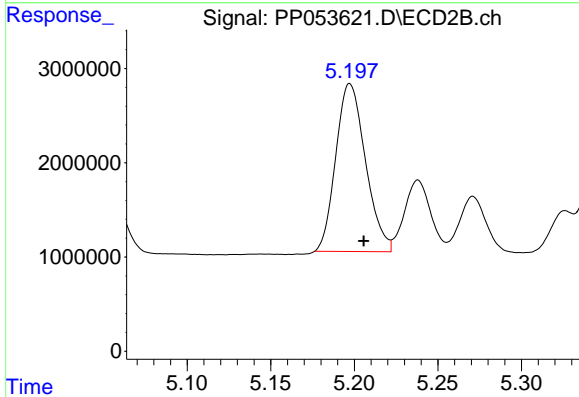
R.T.: 4.981 min
 Delta R.T.: -0.008 min
 Response: 17687912
 Conc: 506.08 ng/ml



#7 AR-1016-5

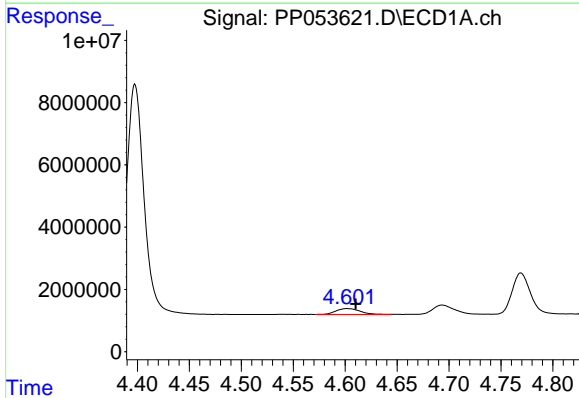
R.T.: 6.050 min
 Delta R.T.: -0.007 min
 Response: 20373157
 Conc: 450.09 ng/ml

Instrument :
 ECD_P
 ClientSampleId :
 AR1660CCC500



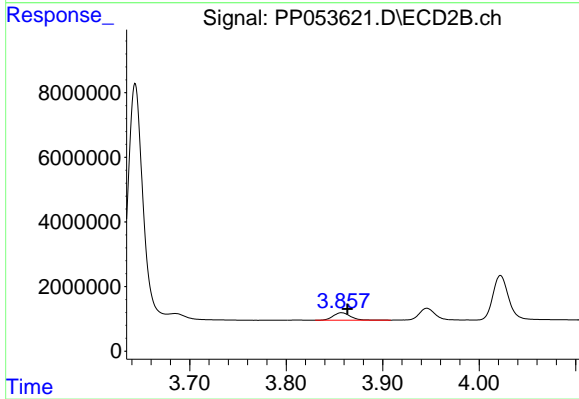
#7 AR-1016-5

R.T.: 5.197 min
 Delta R.T.: -0.008 min
 Response: 22006667
 Conc: 484.51 ng/ml



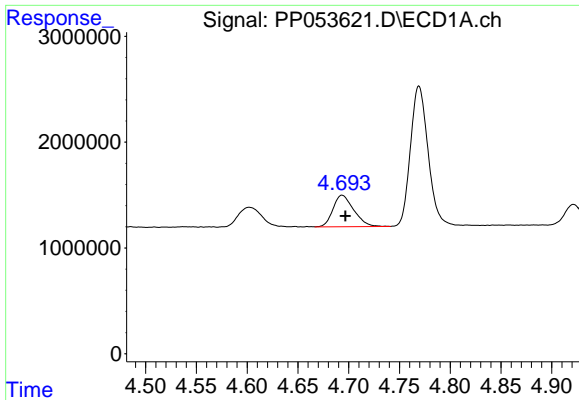
#8 AR-1221-1

R.T.: 4.602 min
 Delta R.T.: -0.008 min
 Response: 3040772
 Conc: 135.29 ng/ml



#8 AR-1221-1

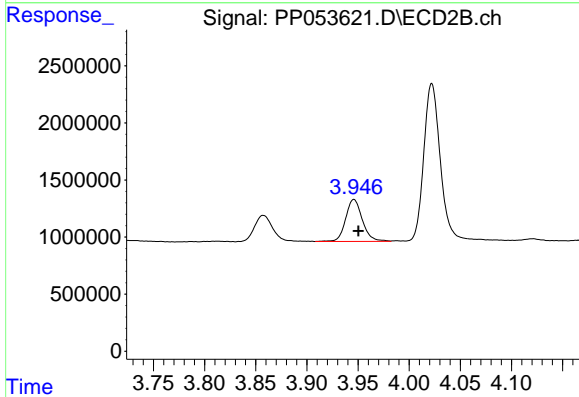
R.T.: 3.857 min
 Delta R.T.: -0.006 min
 Response: 2874237
 Conc: 150.53 ng/ml



#9 AR-1221-2

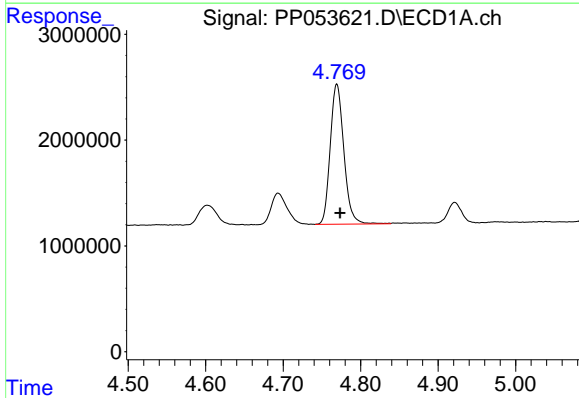
R.T.: 4.694 min
 Delta R.T.: -0.003 min
 Response: 4237306
 Conc: 255.01 ng/ml

Instrument :
 ECD_P
 ClientSampleId :
 AR1660CCC500



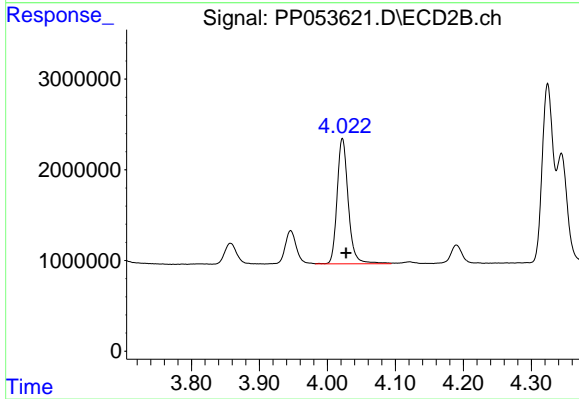
#9 AR-1221-2

R.T.: 3.946 min
 Delta R.T.: -0.004 min
 Response: 4188869
 Conc: 285.97 ng/ml



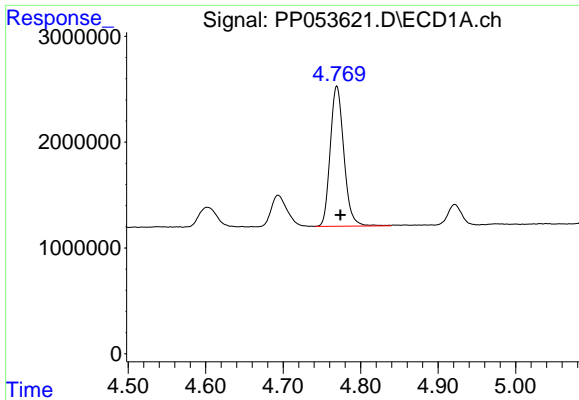
#10 AR-1221-3

R.T.: 4.769 min
 Delta R.T.: -0.004 min
 Response: 16142514
 Conc: 320.52 ng/ml



#10 AR-1221-3

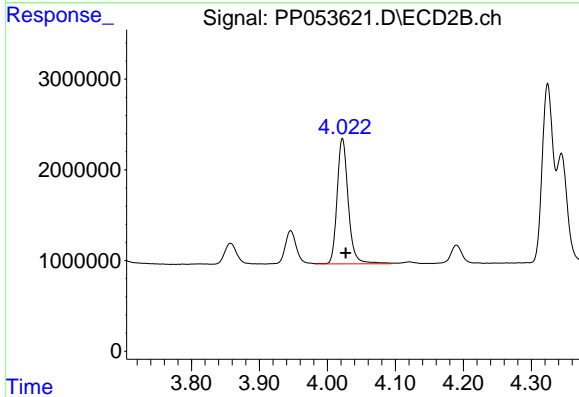
R.T.: 4.022 min
 Delta R.T.: -0.005 min
 Response: 15767179
 Conc: 351.06 ng/ml



#11 AR-1232-1

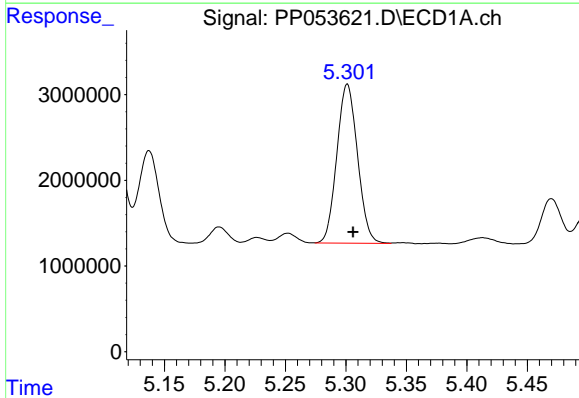
R.T.: 4.769 min
 Delta R.T.: -0.005 min
 Response: 16142514
 Conc: 420.97 ng/ml

Instrument :
 ECD_P
 ClientSampleId :
 AR1660CCC500



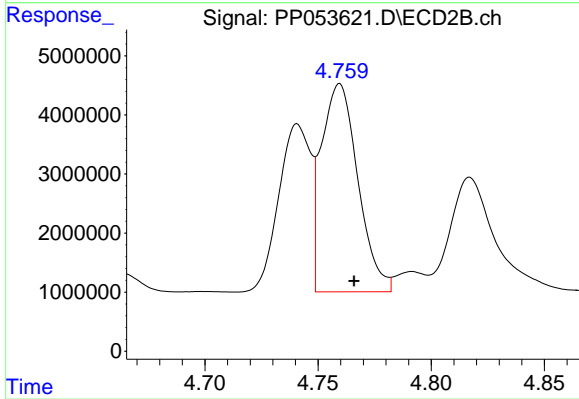
#11 AR-1232-1

R.T.: 4.022 min
 Delta R.T.: -0.005 min
 Response: 15767179
 Conc: 466.58 ng/ml



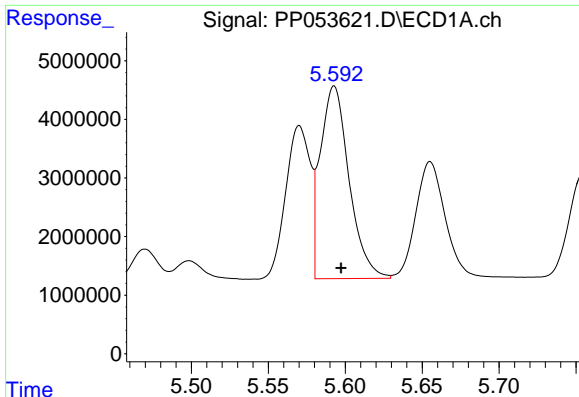
#12 AR-1232-2

R.T.: 5.301 min
 Delta R.T.: -0.005 min
 Response: 22104418
 Conc: 982.08 ng/ml



#12 AR-1232-2

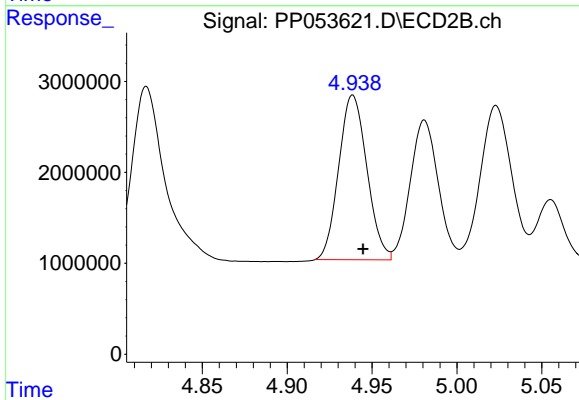
R.T.: 4.760 min
 Delta R.T.: -0.006 min
 Response: 39687971
 Conc: 1140.26 ng/ml



#13 AR-1232-3

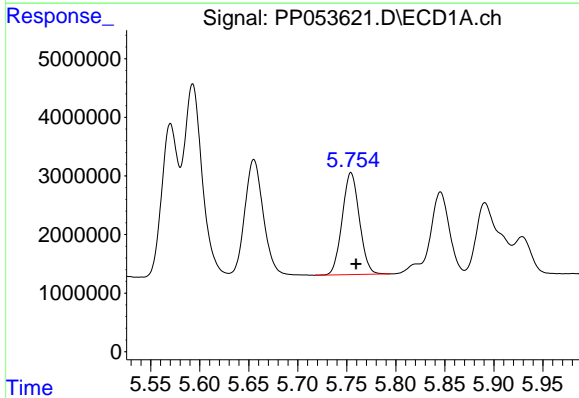
R.T.: 5.593 min
 Delta R.T.: -0.004 min
 Response: 42800323
 Conc: 1054.52 ng/ml

Instrument :
 ECD_P
 ClientSampleId :
 AR1660CCC500



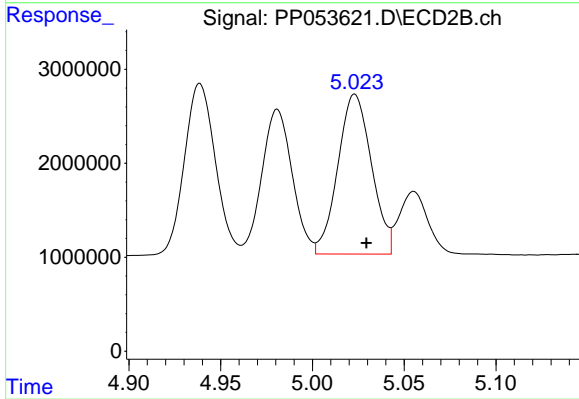
#13 AR-1232-3

R.T.: 4.939 min
 Delta R.T.: -0.006 min
 Response: 20924058
 Conc: 1121.51 ng/ml



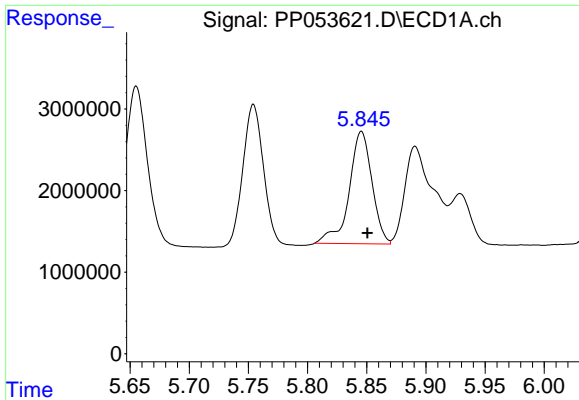
#14 AR-1232-4

R.T.: 5.754 min
 Delta R.T.: -0.005 min
 Response: 21203886
 Conc: 1050.62 ng/ml



#14 AR-1232-4

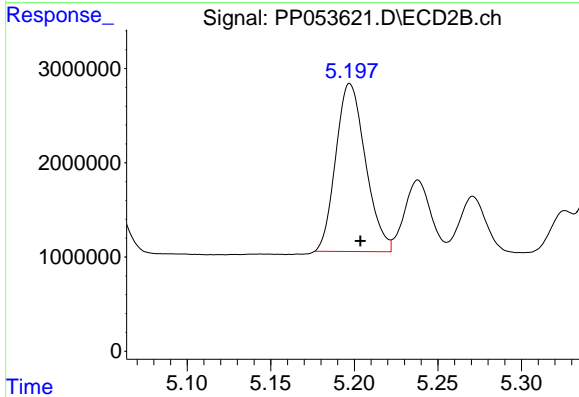
R.T.: 5.023 min
 Delta R.T.: -0.006 min
 Response: 21718250
 Conc: 1233.73 ng/ml



#15 AR-1232-5

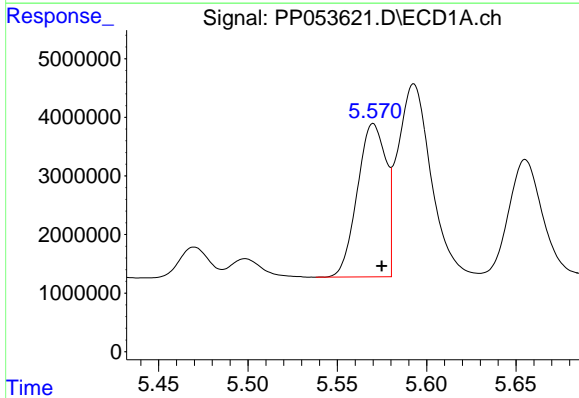
R.T.: 5.846 min
 Delta R.T.: -0.005 min
 Response: 18457678
 Conc: 1113.18 ng/ml

Instrument :
 ECD_P
 ClientSampleId :
 AR1660CCC500



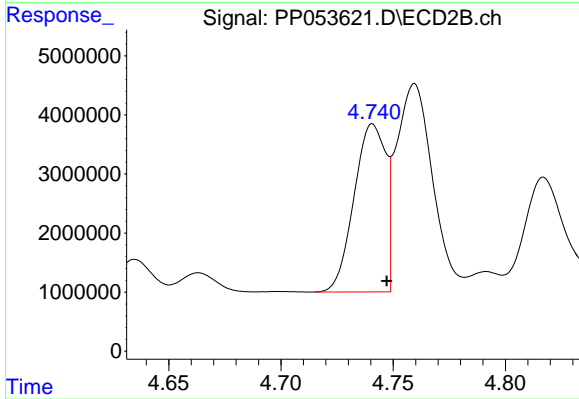
#15 AR-1232-5

R.T.: 5.197 min
 Delta R.T.: -0.006 min
 Response: 22006667
 Conc: 1105.74 ng/ml



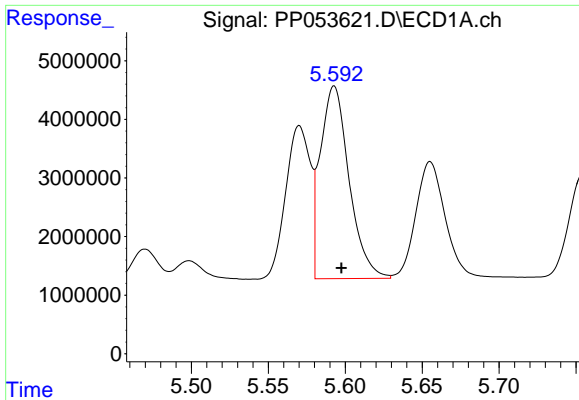
#16 AR-1242-1

R.T.: 5.570 min
 Delta R.T.: -0.005 min
 Response: 29134493
 Conc: 597.83 ng/ml



#16 AR-1242-1

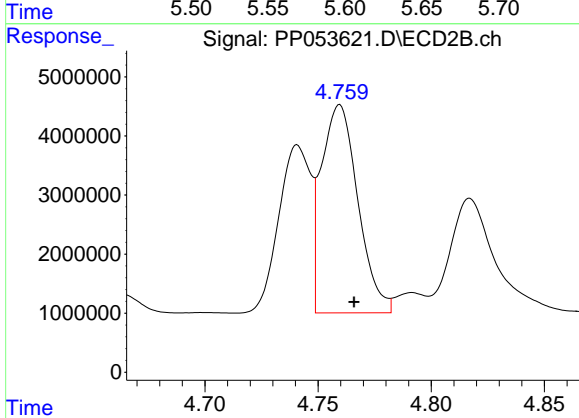
R.T.: 4.741 min
 Delta R.T.: -0.006 min
 Response: 27863036
 Conc: 631.97 ng/ml



#17 AR-1242-2

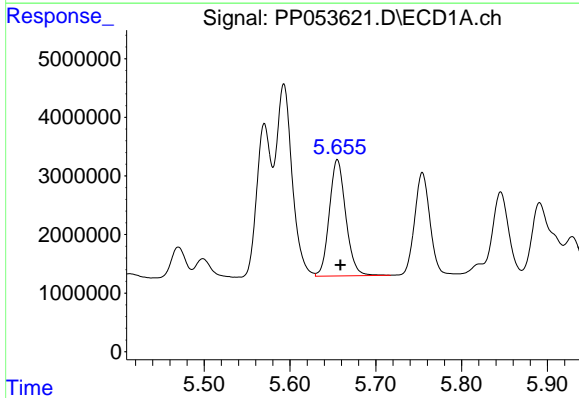
R.T.: 5.593 min
 Delta R.T.: -0.005 min
 Response: 42800323
 Conc: 593.67 ng/ml

Instrument :
 ECD_P
 ClientSampleId :
 AR1660CCC500



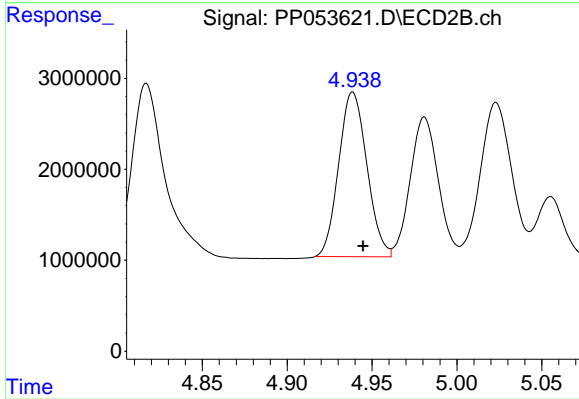
#17 AR-1242-2

R.T.: 4.760 min
 Delta R.T.: -0.006 min
 Response: 39687971
 Conc: 641.72 ng/ml



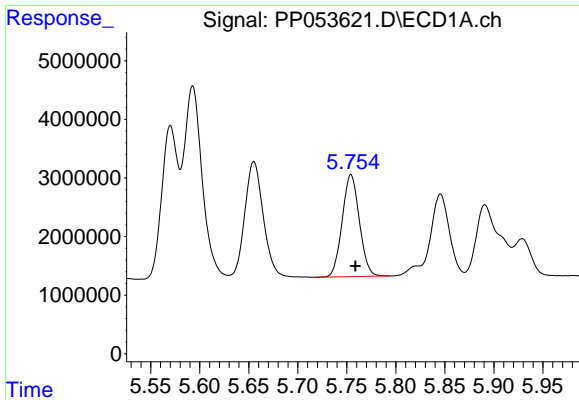
#18 AR-1242-3

R.T.: 5.655 min
 Delta R.T.: -0.004 min
 Response: 26308159
 Conc: 587.46 ng/ml



#18 AR-1242-3

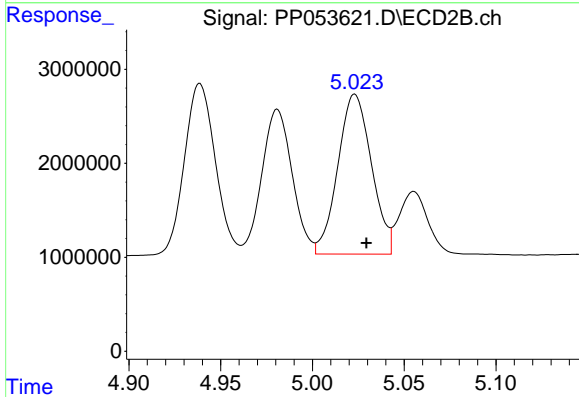
R.T.: 4.939 min
 Delta R.T.: -0.006 min
 Response: 20924058
 Conc: 630.03 ng/ml



#19 AR-1242-4

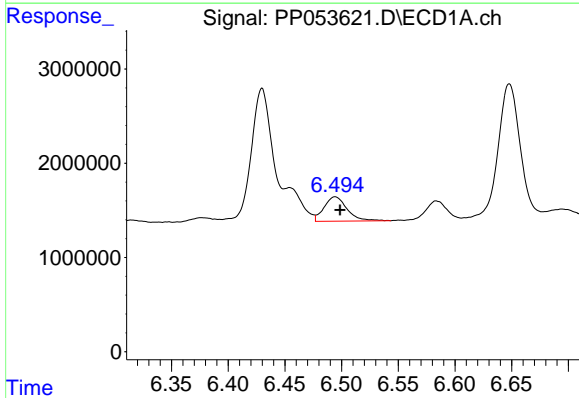
R.T.: 5.754 min
 Delta R.T.: -0.005 min
 Response: 21203886
 Conc: 589.60 ng/ml

Instrument :
 ECD_P
 ClientSampleId :
 AR1660CCC500



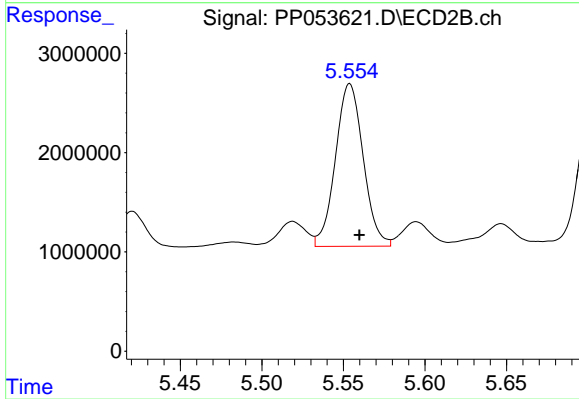
#19 AR-1242-4

R.T.: 5.023 min
 Delta R.T.: -0.006 min
 Response: 21718250
 Conc: 621.22 ng/ml



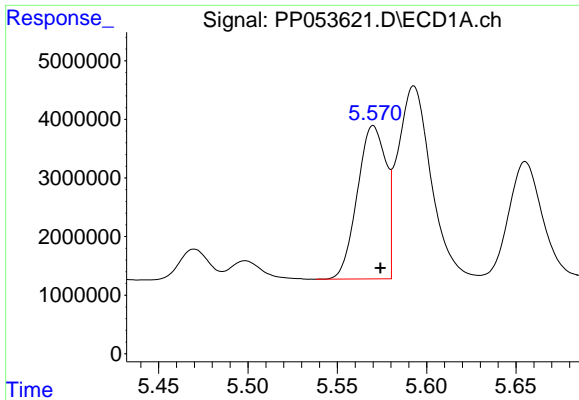
#20 AR-1242-5

R.T.: 6.494 min
 Delta R.T.: -0.004 min
 Response: 3669484
 Conc: 100.51 ng/ml



#20 AR-1242-5

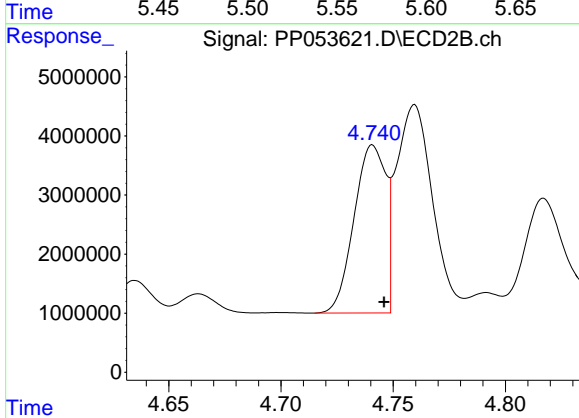
R.T.: 5.554 min
 Delta R.T.: -0.006 min
 Response: 19404736
 Conc: 443.12 ng/ml



#21 AR-1248-1

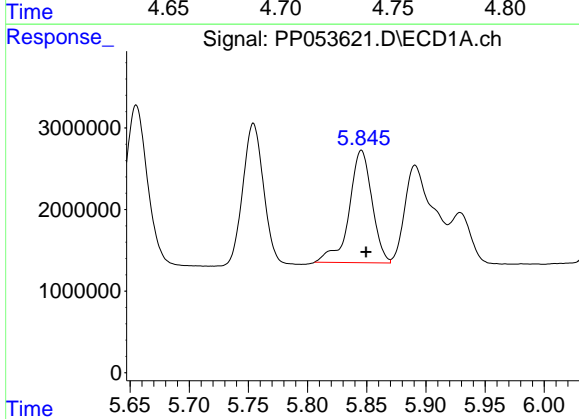
R.T.: 5.570 min
 Delta R.T.: -0.004 min
 Response: 29134493
 Conc: 781.14 ng/ml

Instrument :
 ECD_P
 ClientSampleId :
 AR1660CCC500



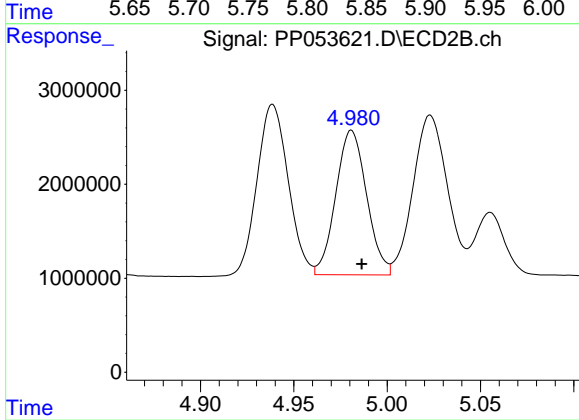
#21 AR-1248-1

R.T.: 4.741 min
 Delta R.T.: -0.005 min
 Response: 27863036
 Conc: 812.66 ng/ml



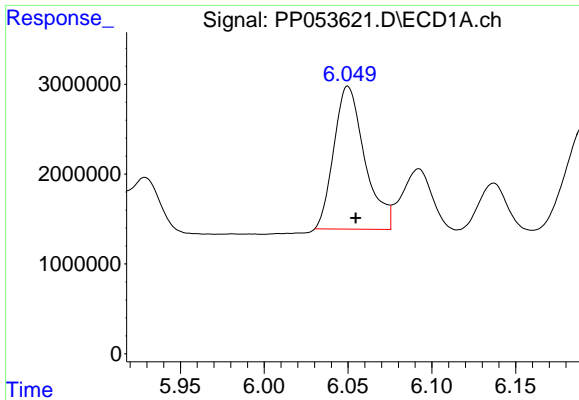
#22 AR-1248-2

R.T.: 5.846 min
 Delta R.T.: -0.004 min
 Response: 18457678
 Conc: 337.36 ng/ml



#22 AR-1248-2

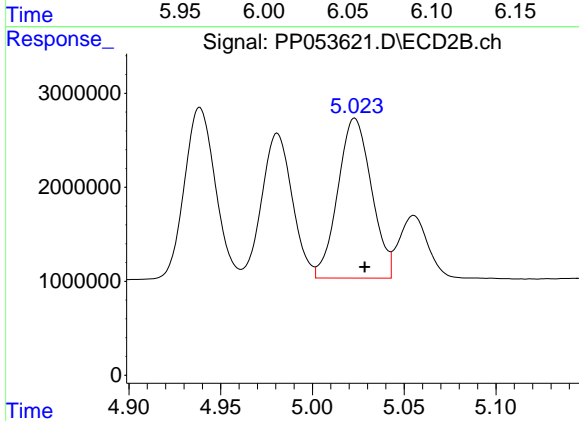
R.T.: 4.981 min
 Delta R.T.: -0.005 min
 Response: 17687912
 Conc: 368.33 ng/ml



#23 AR-1248-3

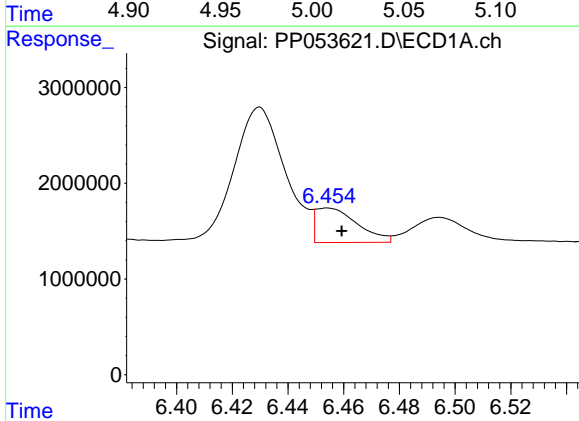
R.T.: 6.050 min
 Delta R.T.: -0.005 min
 Response: 20373157
 Conc: 341.90 ng/ml

Instrument :
 ECD_P
 ClientSampleId :
 AR1660CCC500



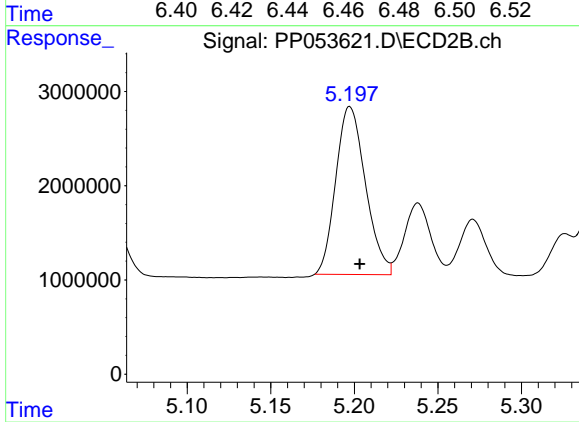
#23 AR-1248-3

R.T.: 5.023 min
 Delta R.T.: -0.005 min
 Response: 21718250
 Conc: 438.29 ng/ml



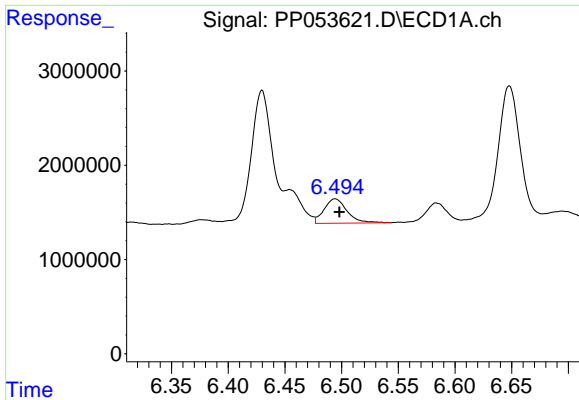
#24 AR-1248-4

R.T.: 6.454 min
 Delta R.T.: -0.005 min
 Response: 3741944
 Conc: 60.65 ng/ml



#24 AR-1248-4

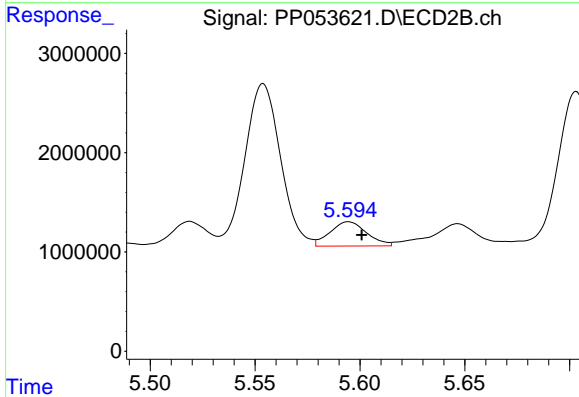
R.T.: 5.197 min
 Delta R.T.: -0.006 min
 Response: 22006667
 Conc: 372.62 ng/ml



#25 AR-1248-5

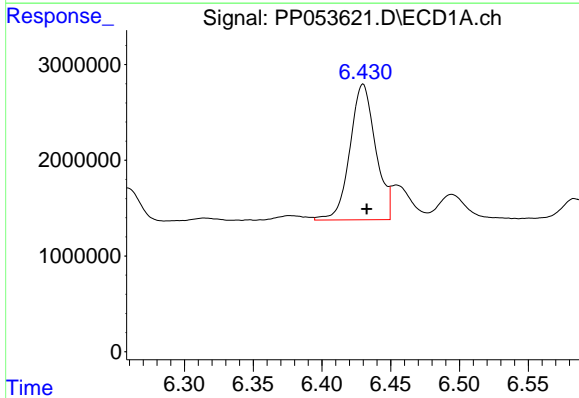
R.T.: 6.494 min
 Delta R.T.: -0.004 min
 Response: 3669484
 Conc: 60.83 ng/ml

Instrument :
 ECD_P
 ClientSampleId :
 AR1660CCC500



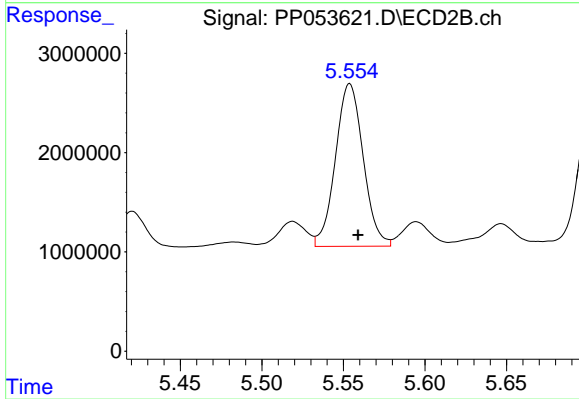
#25 AR-1248-5

R.T.: 5.595 min
 Delta R.T.: -0.006 min
 Response: 2986756
 Conc: 54.29 ng/ml



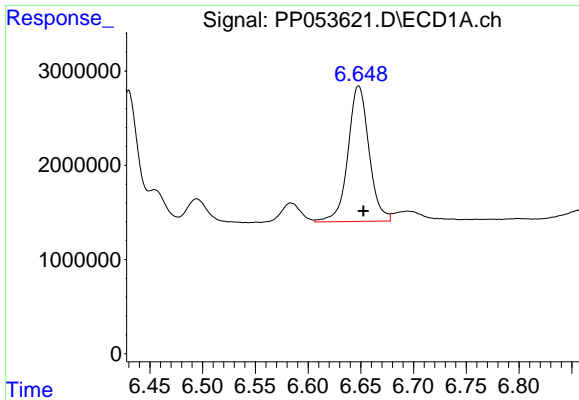
#26 AR-1254-1

R.T.: 6.430 min
 Delta R.T.: -0.003 min
 Response: 18384854
 Conc: 260.05 ng/ml



#26 AR-1254-1

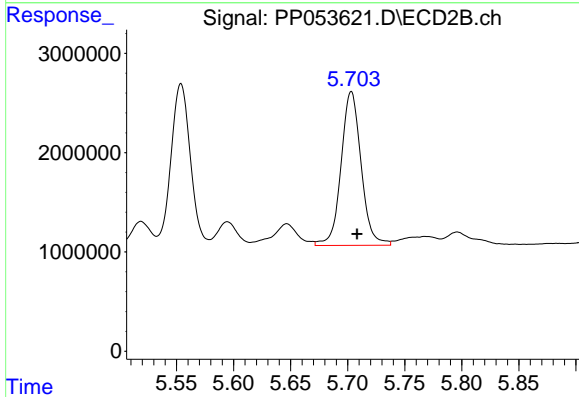
R.T.: 5.554 min
 Delta R.T.: -0.005 min
 Response: 19404736
 Conc: 214.06 ng/ml



#27 AR-1254-2

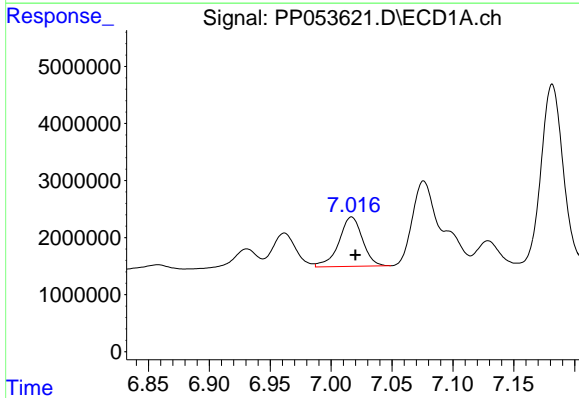
R.T.: 6.648 min
 Delta R.T.: -0.005 min
 Response: 19935768
 Conc: 189.77 ng/ml

Instrument :
 ECD_P
 ClientSampleId :
 AR1660CCC500



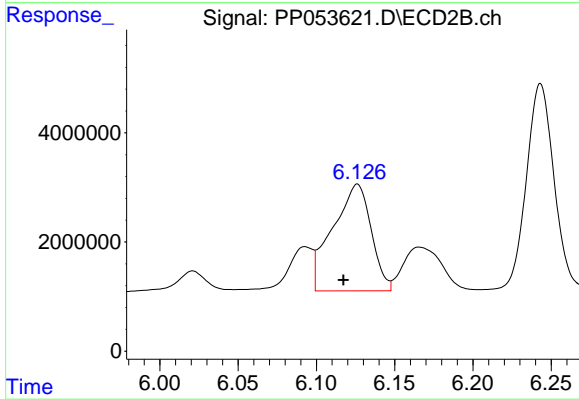
#27 AR-1254-2

R.T.: 5.703 min
 Delta R.T.: -0.005 min
 Response: 18938674
 Conc: 233.25 ng/ml



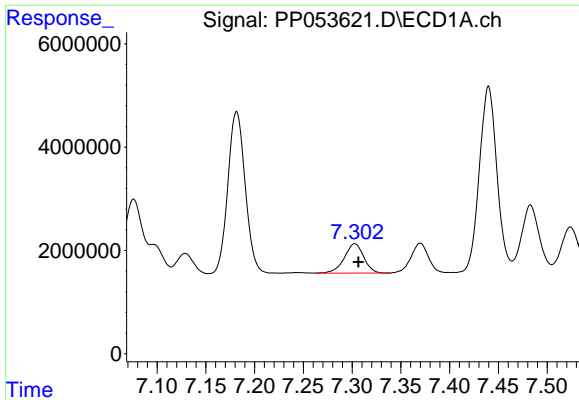
#28 AR-1254-3

R.T.: 7.017 min
 Delta R.T.: -0.003 min
 Response: 11656183
 Conc: 113.64 ng/ml



#28 AR-1254-3

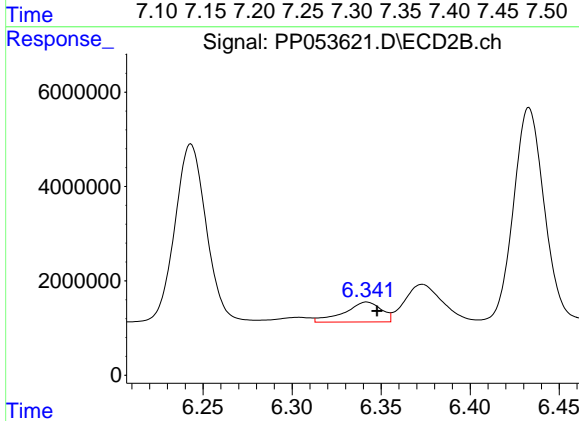
R.T.: 6.126 min
 Delta R.T.: 0.009 min
 Response: 33431735
 Conc: 263.00 ng/ml



#29 AR-1254-4

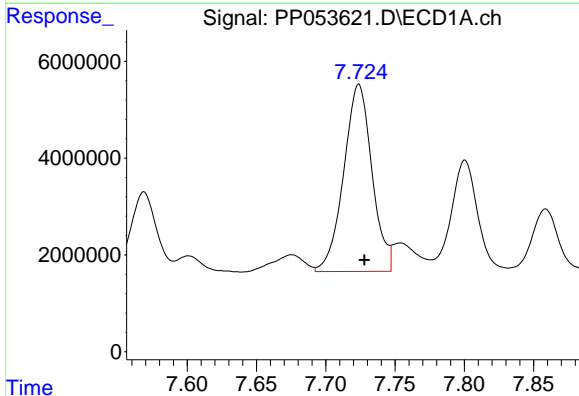
R.T.: 7.303 min
 Delta R.T.: -0.004 min
 Response: 7929976
 Conc: 113.99 ng/ml

Instrument :
 ECD_P
 ClientSampleId :
 AR1660CCC500



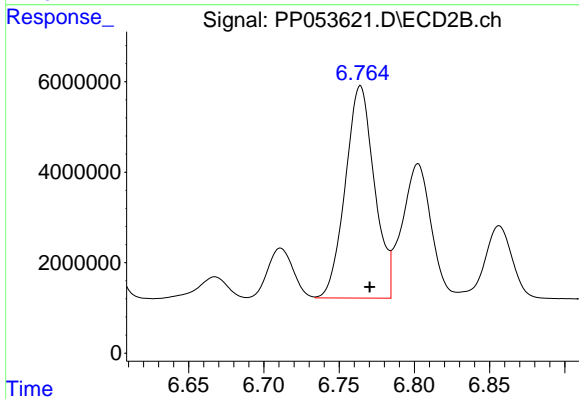
#29 AR-1254-4

R.T.: 6.342 min
 Delta R.T.: -0.006 min
 Response: 6117296
 Conc: 77.58 ng/ml



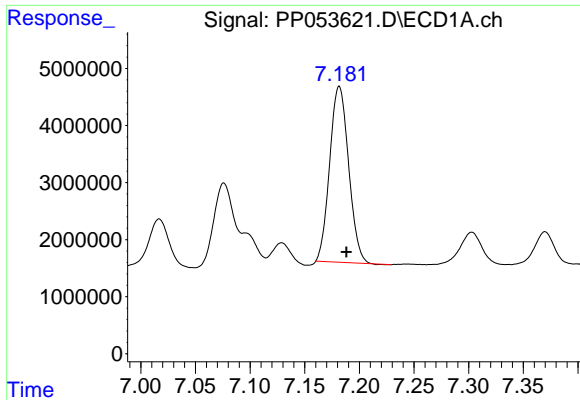
#30 AR-1254-5

R.T.: 7.724 min
 Delta R.T.: -0.004 min
 Response: 54930412
 Conc: 693.51 ng/ml



#30 AR-1254-5

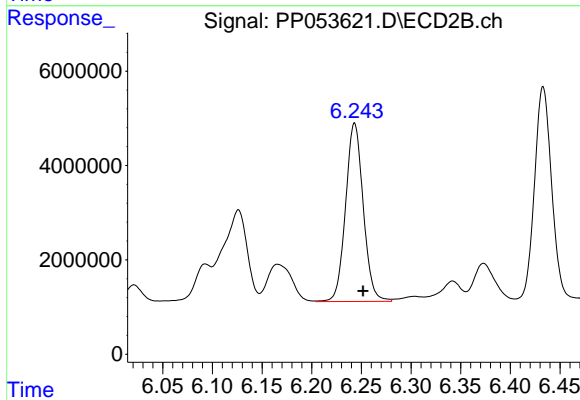
R.T.: 6.764 min
 Delta R.T.: -0.006 min
 Response: 63003897
 Conc: 498.81 ng/ml



#31 AR-1260-1

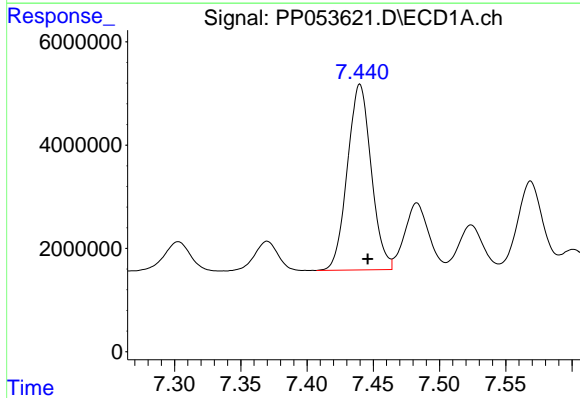
R.T.: 7.182 min
 Delta R.T.: -0.007 min
 Response: 37181904
 Conc: 454.70 ng/ml

Instrument :
 ECD_P
 ClientSampleId :
 AR1660CCC500



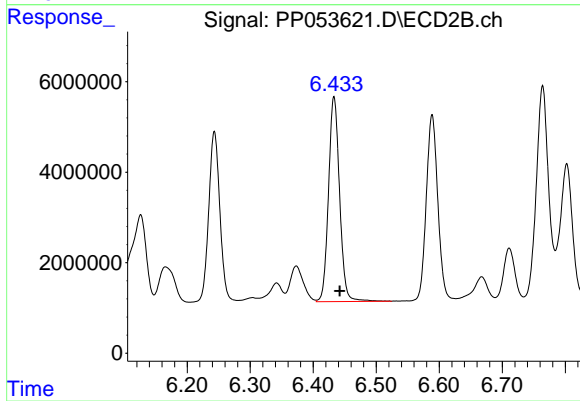
#31 AR-1260-1

R.T.: 6.243 min
 Delta R.T.: -0.009 min
 Response: 46792976
 Conc: 510.45 ng/ml



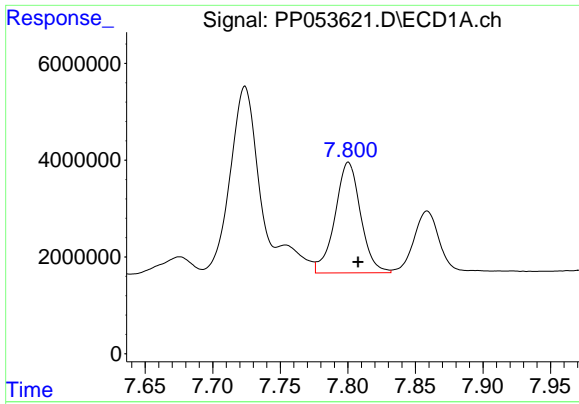
#32 AR-1260-2

R.T.: 7.440 min
 Delta R.T.: -0.006 min
 Response: 45058538
 Conc: 486.55 ng/ml



#32 AR-1260-2

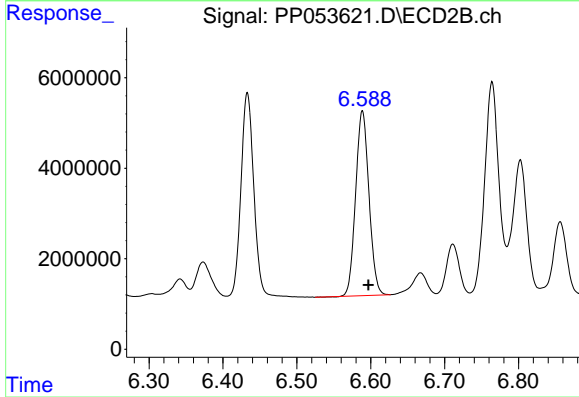
R.T.: 6.433 min
 Delta R.T.: -0.009 min
 Response: 55257106
 Conc: 480.19 ng/ml



#33 AR-1260-3

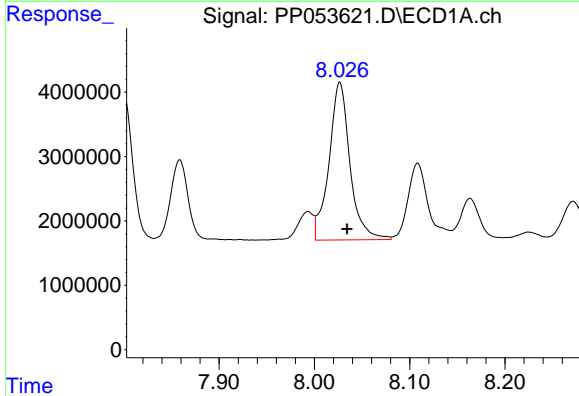
R.T.: 7.800 min
 Delta R.T.: -0.007 min
 Response: 30242519
 Conc: 484.90 ng/ml

Instrument :
 ECD_P
 ClientSampleId :
 AR1660CCC500



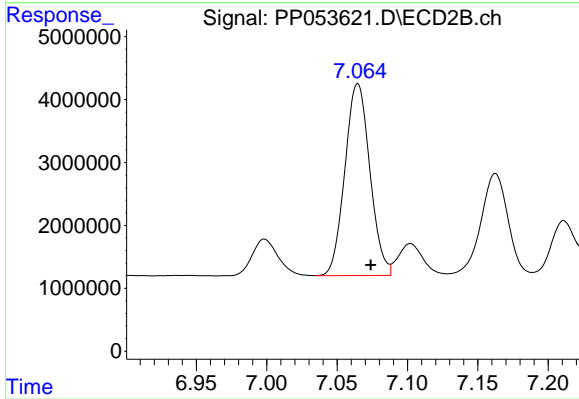
#33 AR-1260-3

R.T.: 6.589 min
 Delta R.T.: -0.008 min
 Response: 51143662
 Conc: 476.61 ng/ml



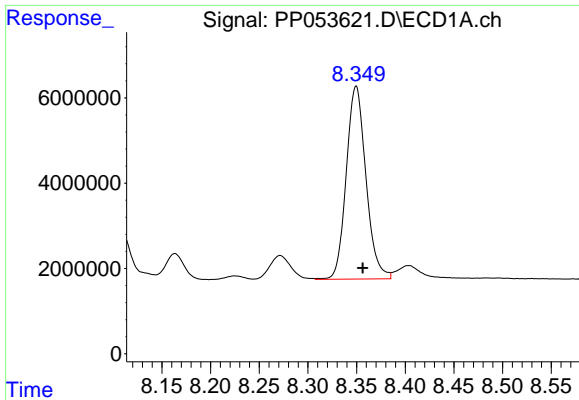
#34 AR-1260-4

R.T.: 8.027 min
 Delta R.T.: -0.007 min
 Response: 37463766
 Conc: 500.10 ng/ml



#34 AR-1260-4

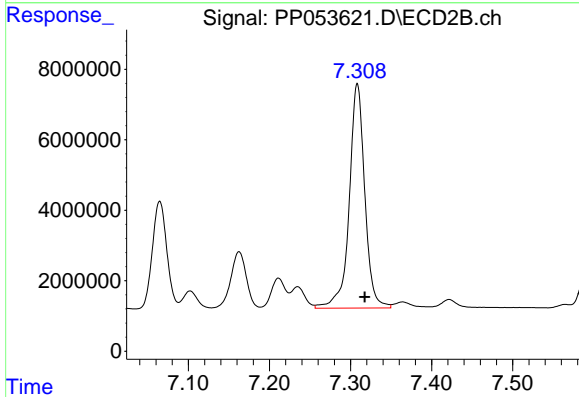
R.T.: 7.065 min
 Delta R.T.: -0.009 min
 Response: 37778726
 Conc: 456.63 ng/ml



#35 AR-1260-5

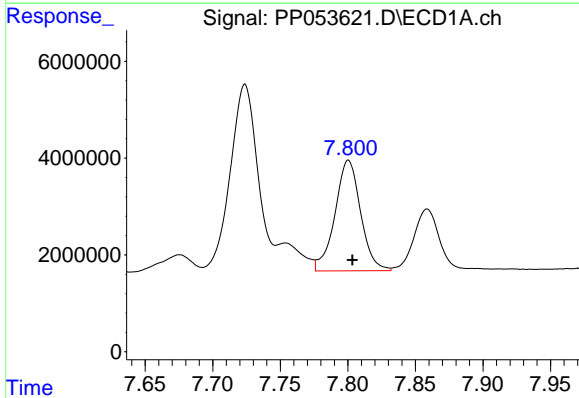
R.T.: 8.350 min
 Delta R.T.: -0.007 min
 Response: 63686441
 Conc: 503.19 ng/ml

Instrument :
 ECD_P
 ClientSampleId :
 AR1660CCC500



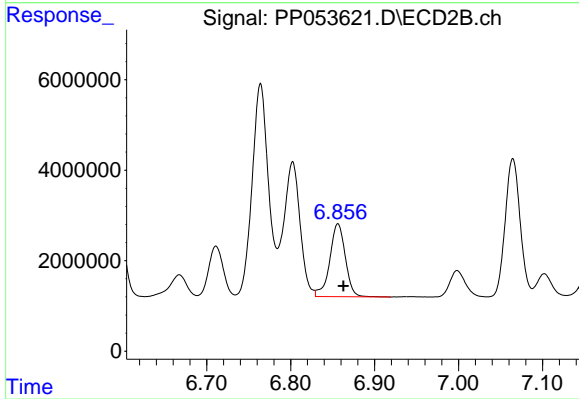
#35 AR-1260-5

R.T.: 7.308 min
 Delta R.T.: -0.009 min
 Response: 84818576
 Conc: 447.94 ng/ml



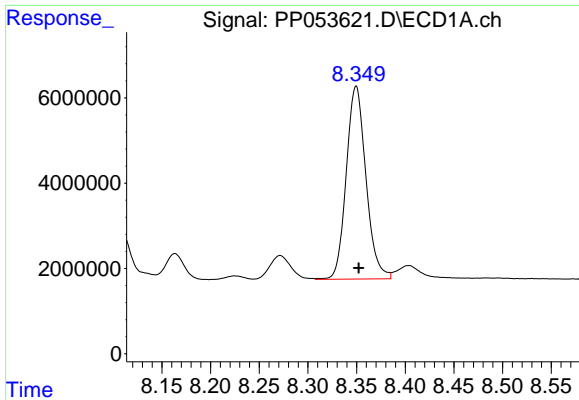
#36 AR-1262-1

R.T.: 7.800 min
 Delta R.T.: -0.003 min
 Response: 30242519
 Conc: 314.73 ng/ml



#36 AR-1262-1

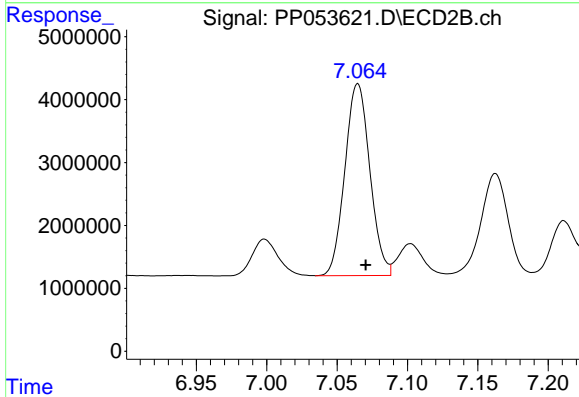
R.T.: 6.856 min
 Delta R.T.: -0.006 min
 Response: 20755687
 Conc: 394.16 ng/ml



#37 AR-1262-2

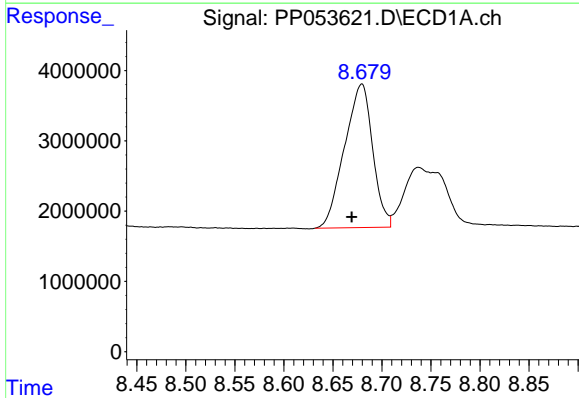
R.T.: 8.350 min
 Delta R.T.: -0.003 min
 Response: 63686441
 Conc: 420.73 ng/ml

Instrument :
 ECD_P
 ClientSampleId :
 AR1660CCC500



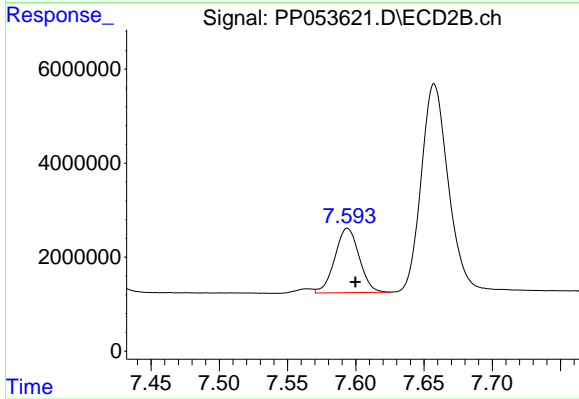
#37 AR-1262-2

R.T.: 7.065 min
 Delta R.T.: -0.006 min
 Response: 37778726
 Conc: 325.78 ng/ml



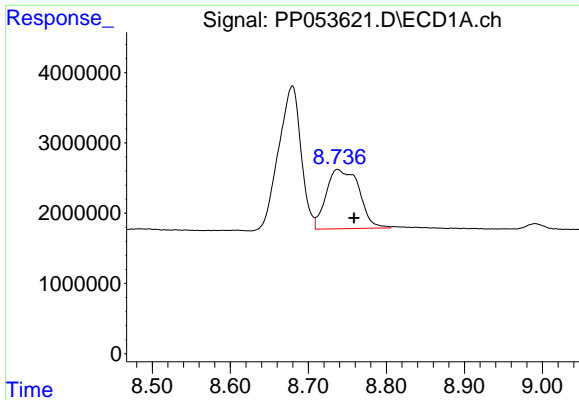
#38 AR-1262-3

R.T.: 8.679 min
 Delta R.T.: 0.010 min
 Response: 40805770
 Conc: 393.86 ng/ml



#38 AR-1262-3

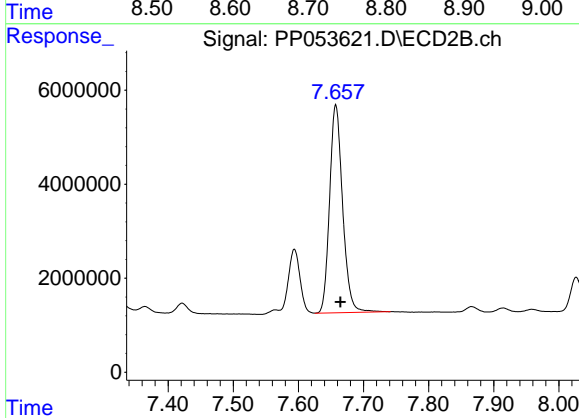
R.T.: 7.594 min
 Delta R.T.: -0.006 min
 Response: 17033247
 Conc: 185.96 ng/ml



#39 AR-1262-4

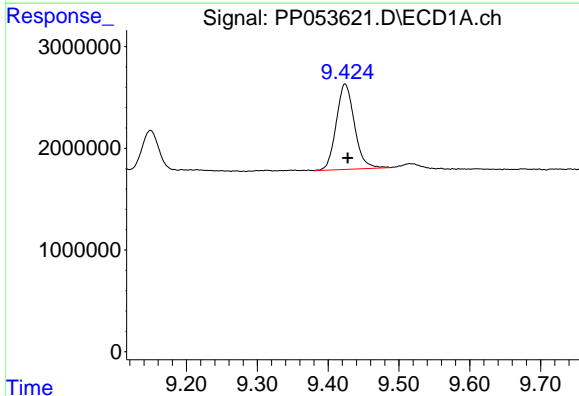
R.T.: 8.737 min
 Delta R.T.: -0.021 min
 Response: 24775599
 Conc: 306.41 ng/ml

Instrument :
 ECD_P
 ClientSampleId :
 AR1660CCC500



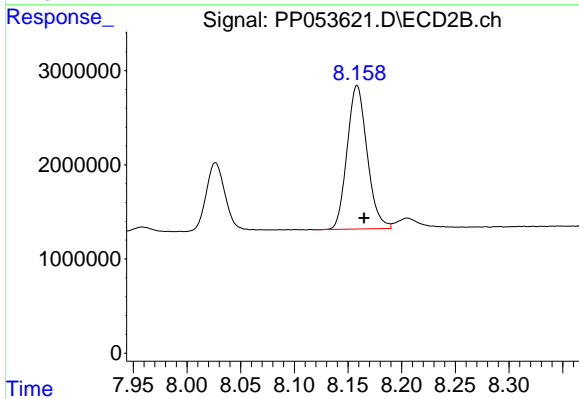
#39 AR-1262-4

R.T.: 7.657 min
 Delta R.T.: -0.007 min
 Response: 61484113
 Conc: 374.88 ng/ml



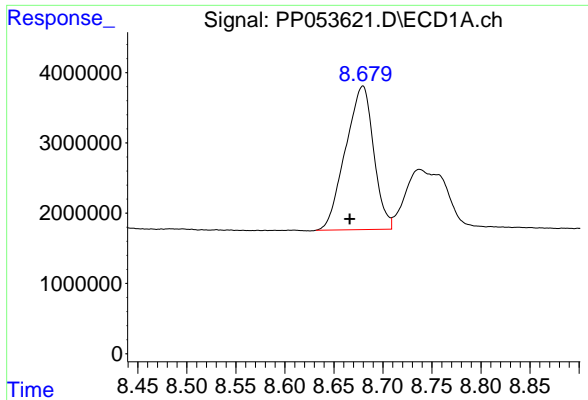
#40 AR-1262-5

R.T.: 9.424 min
 Delta R.T.: -0.003 min
 Response: 15020096
 Conc: 295.41 ng/ml



#40 AR-1262-5

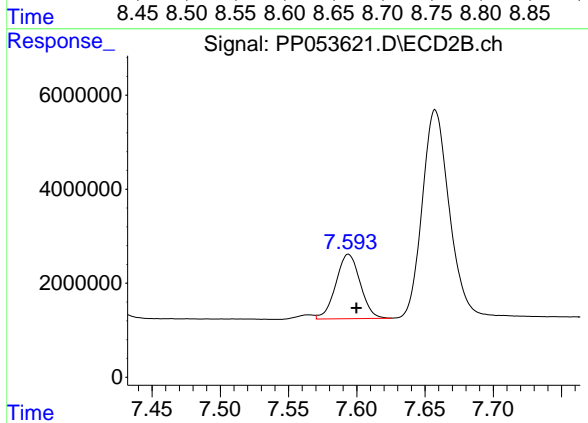
R.T.: 8.158 min
 Delta R.T.: -0.006 min
 Response: 19787171
 Conc: 260.47 ng/ml



#41 AR-1268-1

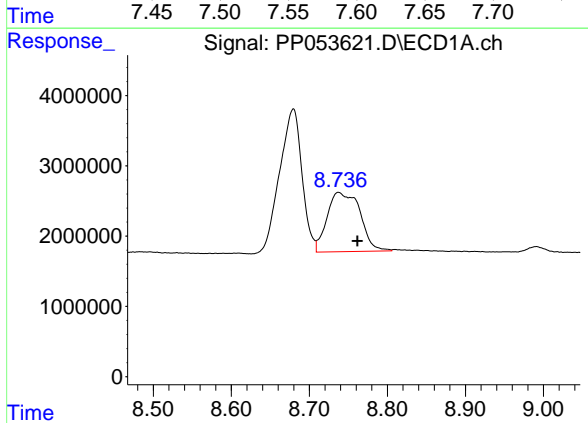
R.T.: 8.679 min
 Delta R.T.: 0.013 min
 Response: 40805770
 Conc: 215.37 ng/ml

Instrument :
 ECD_P
 ClientSampleId :
 AR1660CCC500



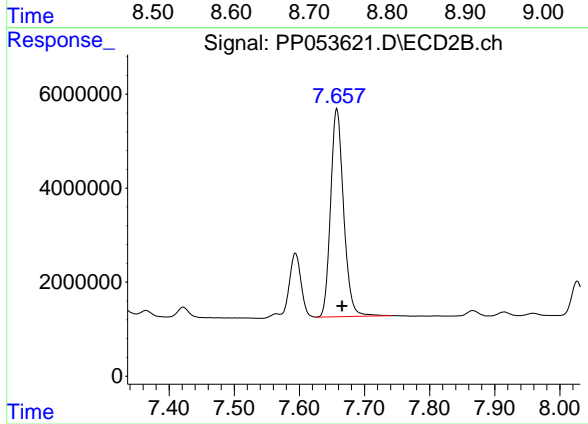
#41 AR-1268-1

R.T.: 7.594 min
 Delta R.T.: -0.006 min
 Response: 17033247
 Conc: 63.73 ng/ml



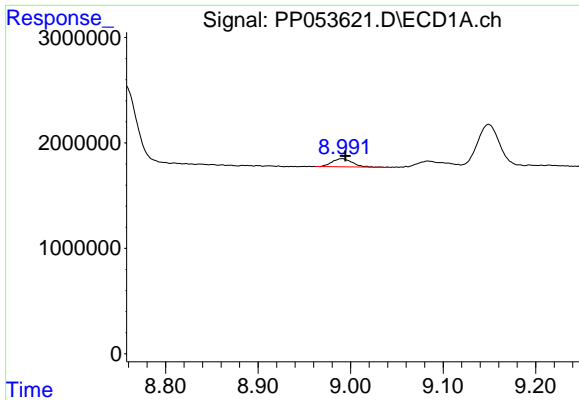
#42 AR-1268-2

R.T.: 8.737 min
 Delta R.T.: -0.024 min
 Response: 24775599
 Conc: 146.06 ng/ml



#42 AR-1268-2

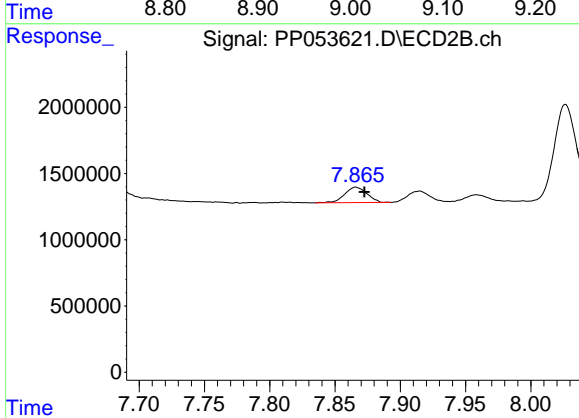
R.T.: 7.657 min
 Delta R.T.: -0.008 min
 Response: 61484113
 Conc: 257.50 ng/ml



#43 AR-1268-3

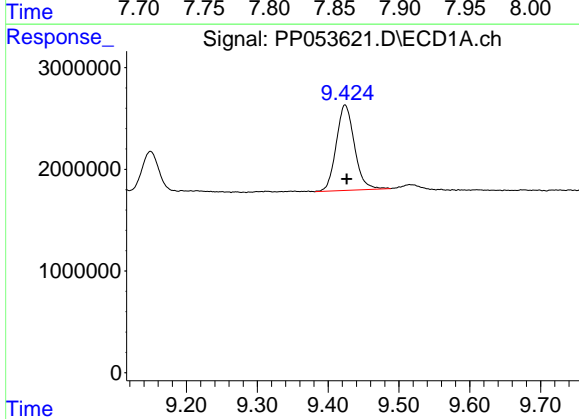
R.T.: 8.991 min
 Delta R.T.: -0.004 min
 Response: 1183148
 Conc: 7.90 ng/ml

Instrument :
 ECD_P
 ClientSampleId :
 AR1660CCC500



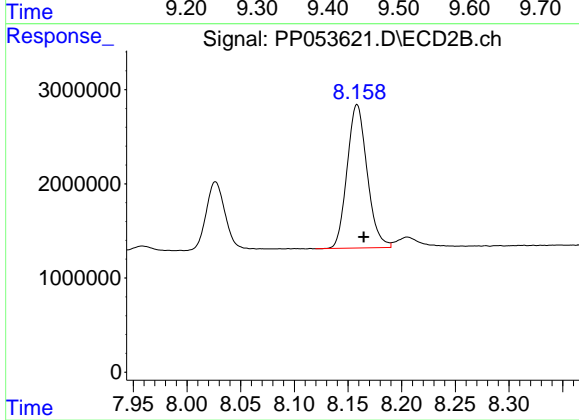
#43 AR-1268-3

R.T.: 7.866 min
 Delta R.T.: -0.007 min
 Response: 1384129
 Conc: 6.73 ng/ml



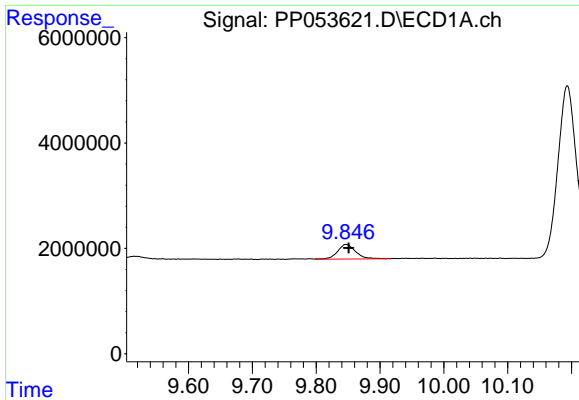
#44 AR-1268-4

R.T.: 9.424 min
 Delta R.T.: -0.002 min
 Response: 15020096
 Conc: 268.35 ng/ml



#44 AR-1268-4

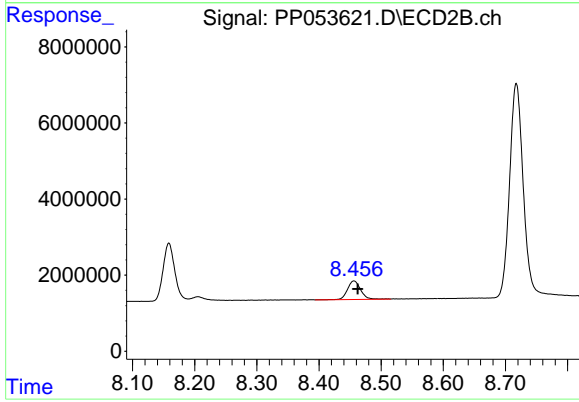
R.T.: 8.158 min
 Delta R.T.: -0.006 min
 Response: 19787171
 Conc: 240.39 ng/ml



#45 AR-1268-5

R.T.: 9.847 min
 Delta R.T.: -0.004 min
 Response: 5465087
 Conc: 11.86 ng/ml

Instrument :
 ECD_P
 ClientSampleId :
 AR1660CCC500



#45 AR-1268-5

R.T.: 8.456 min
 Delta R.T.: -0.006 min
 Response: 7094955
 Conc: 10.69 ng/ml