

Data Path : Z:\pestpcbsrv\HPCHEM1\ECD\_P\Data\PP120320\  
 Data File : PP031839.D  
 Signal(s) : Signal #1: ECD1A.CH Signal #2: ECD2B.CH  
 Acq On : 03 Dec 2020 20:38  
 Operator : DD\AJ  
 Sample : L4940-05  
 Misc :  
 ALS Vial : 27 Sample Multiplier: 1

**Instrument :**  
 ECD\_P  
**ClientSampleId :**  
 LLEXSITUTV-012-001-SO

**Manual Integrations**  
**APPROVED**  
 mohammad  
 12/4/2020 12:34:57 PM

Integration File signal 1: autoint1.e  
 Integration File signal 2: autoint2.e  
 Quant Time: Dec 04 06:18:43 2020  
 Quant Method : Z:\pestpcbsrv\HPCHEM1\ECD\_P\methods\PP112220.M  
 Quant Title : GC EXTRACTABLES  
 QLast Update : Tue Nov 24 12:23:58 2020  
 Response via : Initial Calibration  
 Integrator: ChemStation 6890 Scale Mode: Small noise peaks clipped

Volume Inj. : 2 µl  
 Signal #1 Phase : ZB-MR1 Signal #2 Phase: ZB-MR2  
 Signal #1 Info : 30Mx0.32mmx 0.50µ Signal #2 Info : 30M x 0.32mm x 0.25µm

Compound	RT#1	RT#2	Resp#1	Resp#2	ng/ml	ng/ml
-----						
System Monitoring Compounds						
1) SA Tetrachlo...	4.786	4.059	1043103	971478	21.541	20.274
2) SA Decachlor...	10.655	9.358	666955	720270	19.637	19.452
Target Compounds						
26) L6 AR-1254-1	6.995	6.182	33245	43872	21.816m	20.281
27) L6 AR-1254-2	7.223	6.341	60155	45732	25.902	24.548
28) L6 AR-1254-3	7.601	6.761	72026	89986	28.510	29.110
29) L6 AR-1254-4	7.896	7.001	60092	55833	35.415m	32.864
30) L6 AR-1254-5	8.324	7.428	90135	112039	48.215m	41.502
-----						

(f)=RT Delta > 1/2 Window (#)=Amounts differ by > 25% (m)=manual int.

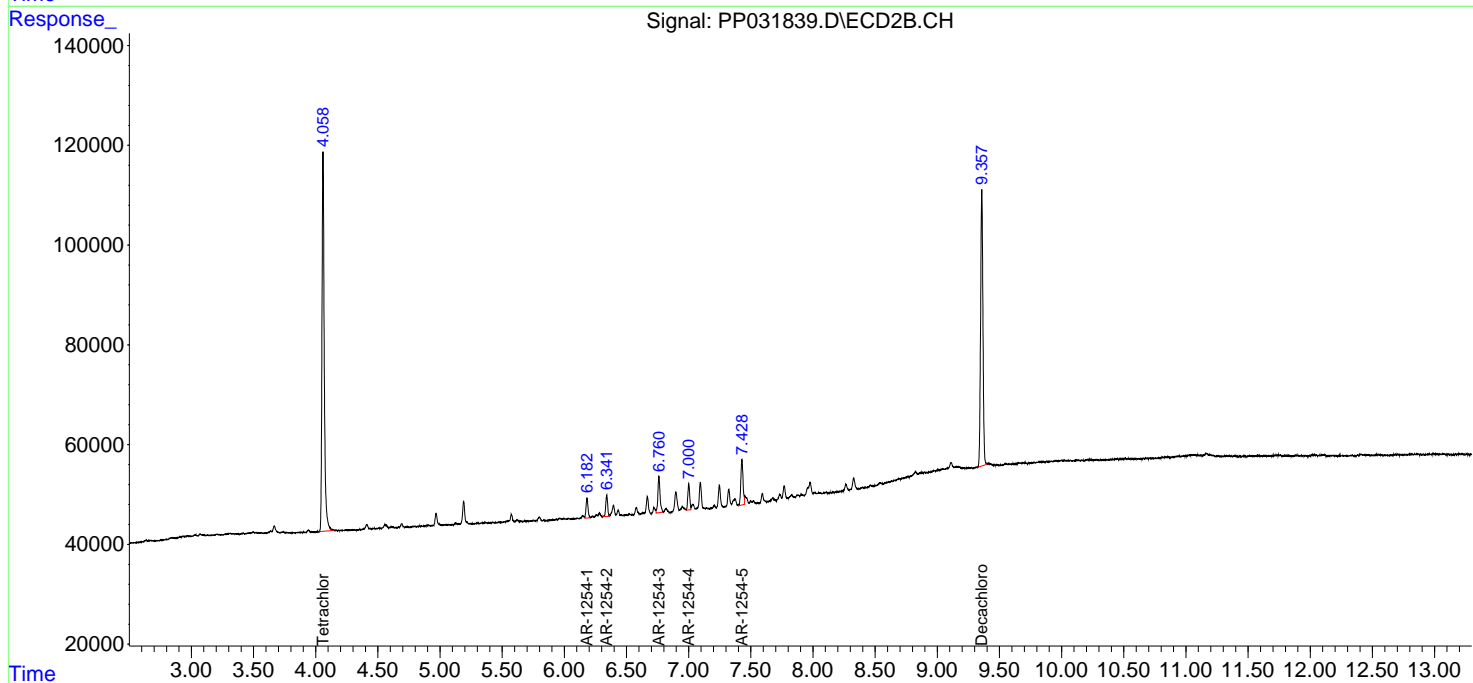
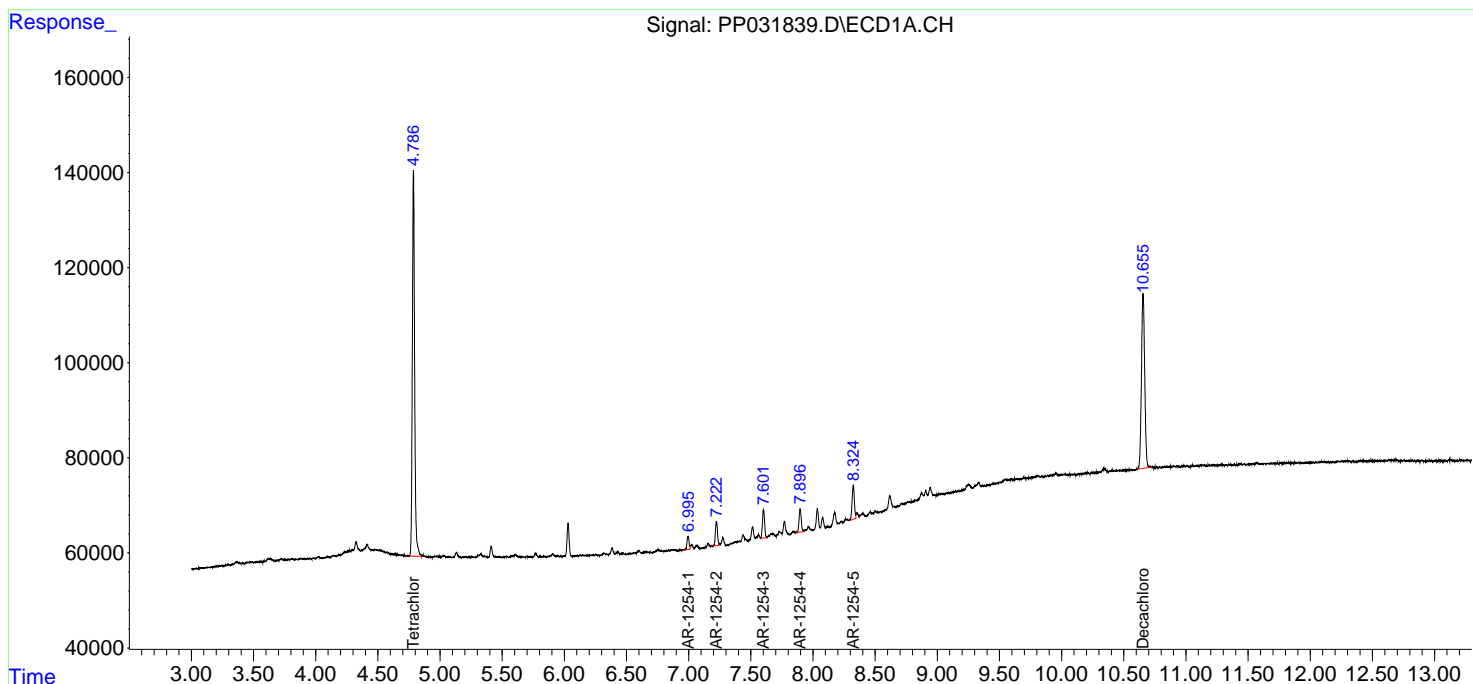
Data Path : Z:\pestpcbsrv\HPCHEM1\ECD\_P\Data\PP120320\  
 Data File : PP031839.D  
 Signal(s) : Signal #1: ECD1A.CH Signal #2: ECD2B.CH  
 Acq On : 03 Dec 2020 20:38  
 Operator : DD\AJ  
 Sample : L4940-05  
 Misc :  
 ALS Vial : 27 Sample Multiplier: 1

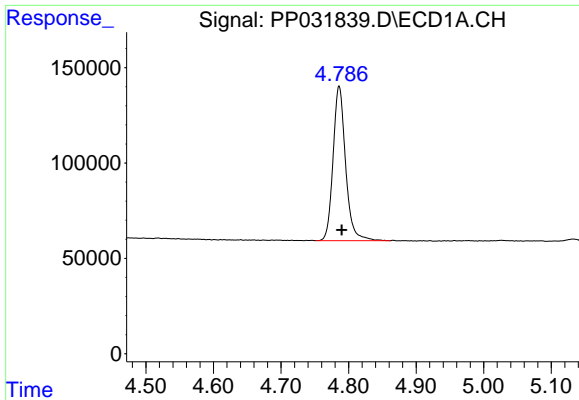
**Instrument :**  
 ECD\_P  
**ClientSampleID :**  
 LLEXSITUTV-012-001-SO

**Manual Integrations**  
**APPROVED**  
 mohammad  
 12/4/2020 12:34:57 PM

Integration File signal 1: autoint1.e  
 Integration File signal 2: autoint2.e  
 Quant Time: Dec 04 06:18:43 2020  
 Quant Method : Z:\pestpcbsrv\HPCHEM1\ECD\_P\methods\PP112220.M  
 Quant Title : GC EXTRACTABLES  
 QLast Update : Tue Nov 24 12:23:58 2020  
 Response via : Initial Calibration  
 Integrator: ChemStation 6890 Scale Mode: Small noise peaks clipped

Volume Inj. : 2 µl  
 Signal #1 Phase : ZB-MR1 Signal #2 Phase: ZB-MR2  
 Signal #1 Info : 30Mx0.32mmx 0.50µm Signal #2 Info : 30M x 0.32mm x 0.25µm

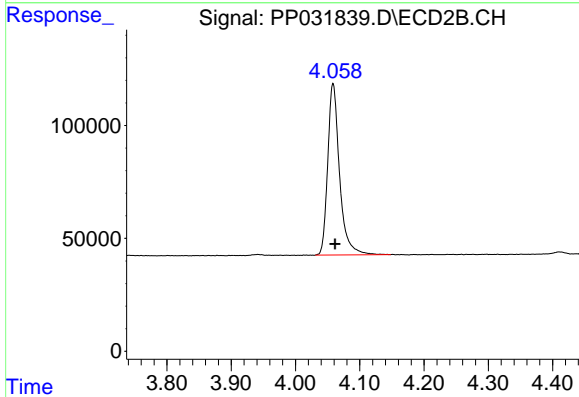




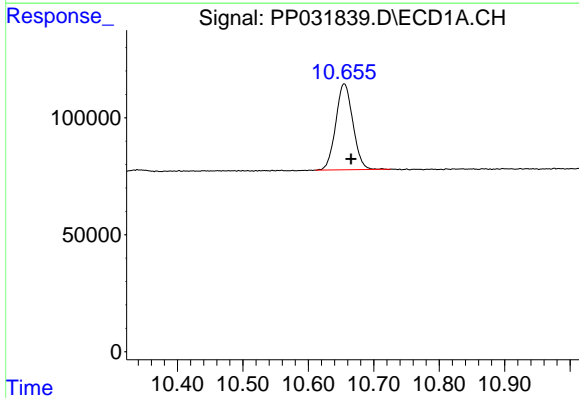
#1 Tetrachloro-m-xylene  
 R.T.: 4.786 min  
 Delta R.T.: -0.004 min  
 Response: 1043103  
 Conc: 21.54 ng/ml

Instrument :  
 ECD\_P  
 ClientSampleId :  
 LLEXSITUTV-012-001-SO

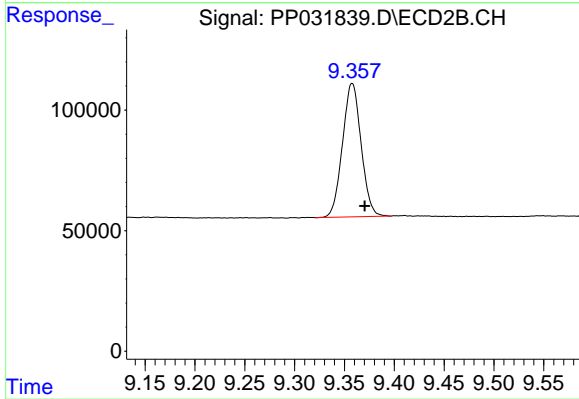
Manual Integrations  
 APPROVED  
 mohammad  
 12/4/2020 12:34:57 PM



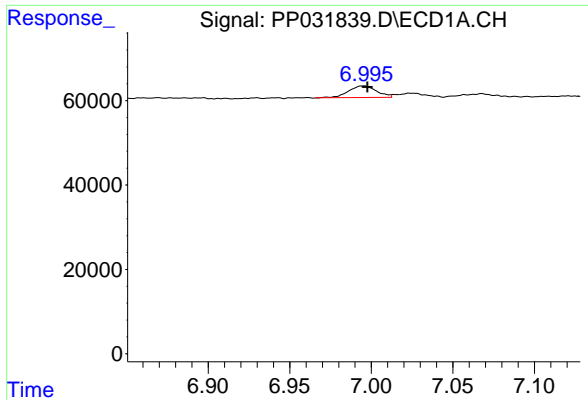
#1 Tetrachloro-m-xylene  
 R.T.: 4.059 min  
 Delta R.T.: -0.003 min  
 Response: 971478  
 Conc: 20.27 ng/ml



#2 Decachlorobiphenyl  
 R.T.: 10.655 min  
 Delta R.T.: -0.010 min  
 Response: 666955  
 Conc: 19.64 ng/ml



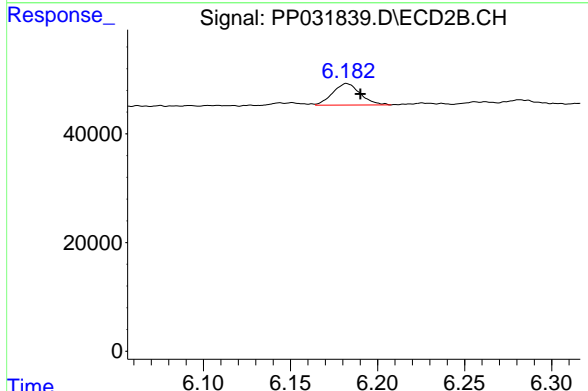
#2 Decachlorobiphenyl  
 R.T.: 9.358 min  
 Delta R.T.: -0.013 min  
 Response: 720270  
 Conc: 19.45 ng/ml



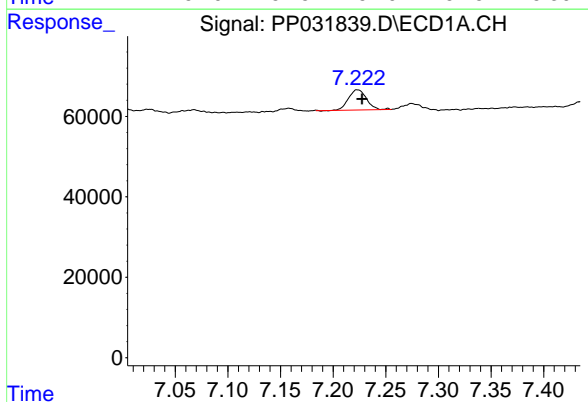
#26 AR-1254-1  
 R.T.: 6.995 min  
 Delta R.T.: -0.002 min  
 Response: 33245  
 Conc: 21.82 ng/ml m

**Instrument :**  
 ECD\_P  
**ClientSampleId :**  
 LLEXSITUTV-012-001-SO

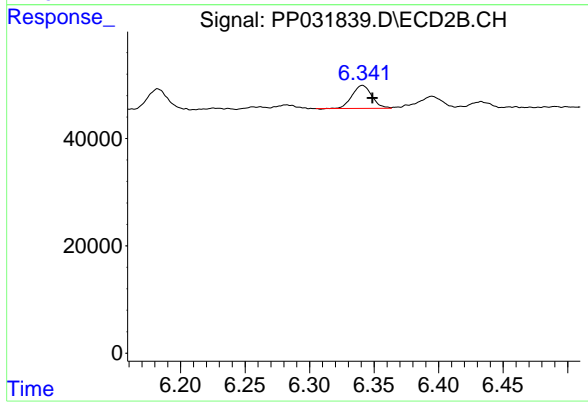
**Manual Integrations**  
**APPROVED**  
 mohammad  
 12/4/2020 12:34:57 PM



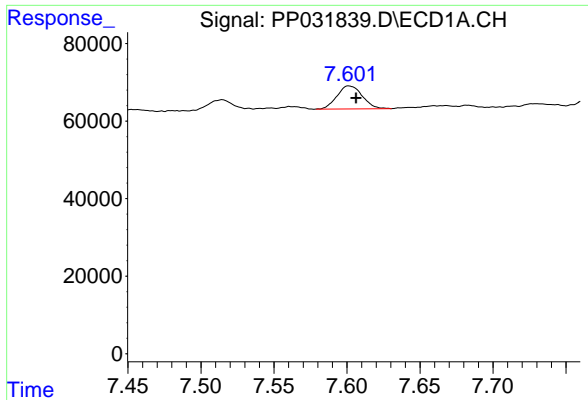
#26 AR-1254-1  
 R.T.: 6.182 min  
 Delta R.T.: -0.008 min  
 Response: 43872  
 Conc: 20.28 ng/ml



#27 AR-1254-2  
 R.T.: 7.223 min  
 Delta R.T.: -0.004 min  
 Response: 60155  
 Conc: 25.90 ng/ml



#27 AR-1254-2  
 R.T.: 6.341 min  
 Delta R.T.: -0.008 min  
 Response: 45732  
 Conc: 24.55 ng/ml

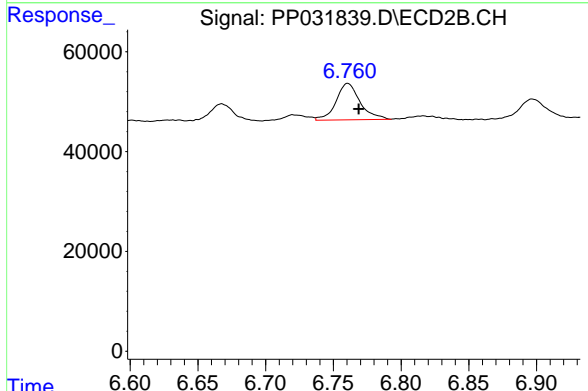


#28 AR-1254-3

R.T.: 7.601 min  
 Delta R.T.: -0.005 min  
 Response: 72026  
 Conc: 28.51 ng/ml

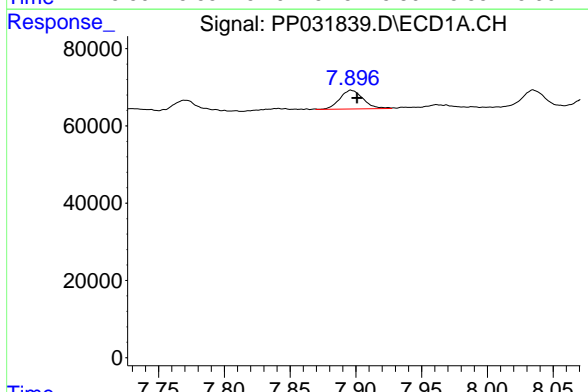
**Instrument :**  
 ECD\_P  
**ClientSampleId :**  
 LLEXSITUTV-012-001-SO

**Manual Integrations**  
**APPROVED**  
 mohammad  
 12/4/2020 12:34:57 PM



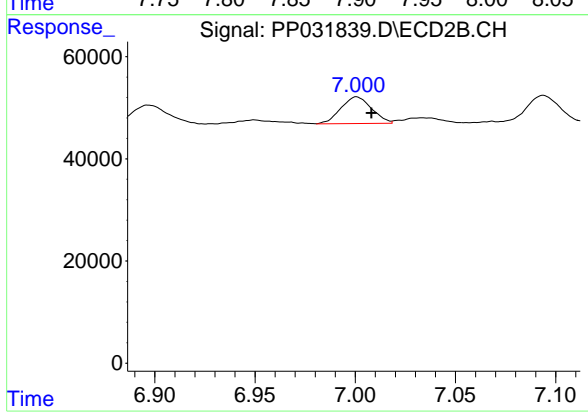
#28 AR-1254-3

R.T.: 6.761 min  
 Delta R.T.: -0.008 min  
 Response: 89986  
 Conc: 29.11 ng/ml



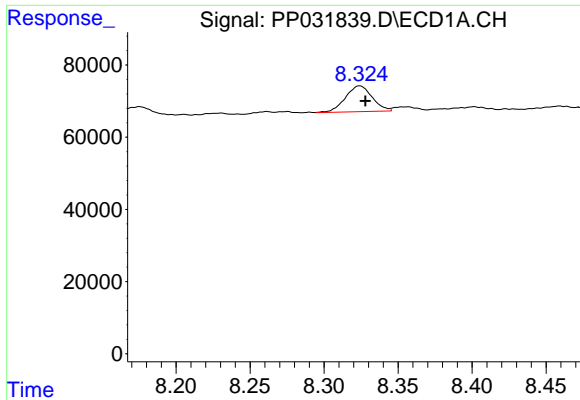
#29 AR-1254-4

R.T.: 7.896 min  
 Delta R.T.: -0.005 min  
 Response: 60092  
 Conc: 35.41 ng/ml m



#29 AR-1254-4

R.T.: 7.001 min  
 Delta R.T.: -0.007 min  
 Response: 55833  
 Conc: 32.86 ng/ml



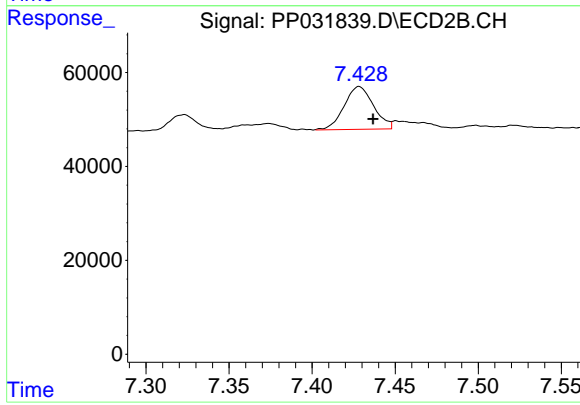
#30 AR-1254-5

R.T.: 8.324 min  
Delta R.T.: -0.004 min  
Response: 90135  
Conc: 48.22 ng/ml m

Instrument :  
ECD\_P  
ClientSampleId :  
LLEXSITUTV-012-001-SO

Manual Integrations  
APPROVED

mohammad  
12/4/2020 12:34:57 PM



#30 AR-1254-5

R.T.: 7.428 min  
Delta R.T.: -0.009 min  
Response: 112039  
Conc: 41.50 ng/ml