

Data Path : Z:\pestpcbsrv\HPCHEM1\ECD_P\Data\PP120423\
 Data File : PP062131.D
 Signal(s) : Signal #1: ECD1A.ch Signal #2: ECD2B.ch
 Acq On : 04 Dec 2023 17:00
 Operator : YP\AJ
 Sample : I.BLK
 Misc :
 ALS Vial : 2 Sample Multiplier: 1

Instrument :
 ECD_P
 ClientSampleId :

Integration File signal 1: autoint1.e
 Integration File signal 2: autoint2.e
 Quant Time: Dec 04 17:16:27 2023
 Quant Method : Z:\pestpcbsrv\HPCHEM1\ECD_P\methods\PP112723.M
 Quant Title : GC EXTRACTABLES
 QLast Update : Tue Nov 28 04:28:00 2023
 Response via : Initial Calibration
 Integrator: ChemStation

Volume Inj. : 2 µl
 Signal #1 Phase : ZB-MR2 Signal #2 Phase: ZB-MR2
 Signal #1 Info : 30Mx0.32mmx 0.50µ Signal #2 Info : 30M x 0.32mm x 0.25µm

Compound	RT#1	RT#2	Resp#1	Resp#2	ng/ml	ng/ml

System Monitoring Compounds						
1) SA Tetrachlo...	4.451	3.722	26569617	33302771	20.183	18.508
2) SA Decachlor...	10.244	8.847	22220321	38834602	21.531	18.816
Target Compounds						
3) L1 AR-1016-1	5.640	0.000	219380	0	4.427	N.D. #
4) L1 AR-1016-2	5.640	0.000	219380	0	2.941	N.D. #
5) L1 AR-1016-3	5.717	0.000	107803	0	2.191	N.D. #
6) L1 AR-1016-4	5.814	0.000	241938	0	6.365	N.D. #
9) L2 AR-1221-2	4.761	4.030	604283	486328	45.311	25.568 #
13) L3 AR-1232-3	5.640	0.000	219380	0	6.462	N.D. #
14) L3 AR-1232-4	5.814	0.000	241938	0	14.320	N.D. #
15) L3 AR-1232-5	5.910	0.000	145697	0	9.668	N.D. #
16) L4 AR-1242-1	5.640	0.000	219380	0	5.520	N.D. #
17) L4 AR-1242-2	5.640	0.000	219380	0	3.690	N.D. #
18) L4 AR-1242-3	5.717	0.000	107803	0	2.757	N.D. #
19) L4 AR-1242-4	5.814	0.000	241938	0	7.978	N.D. #
21) L5 AR-1248-1	5.640	0.000	219380	0	7.180	N.D. #
22) L5 AR-1248-2	5.910	0.000	145697	0	2.978	N.D. #
28) L6 AR-1254-3	7.072	0.000	462389	0	5.589	N.D. #
31) L7 AR-1260-1	7.238	0.000	375901	0	5.503	N.D. #
32) L7 AR-1260-2	0.000	6.520f	0	616831	N.D.	4.527 #
36) L8 AR-1262-1	7.914	0.000	145221	0	4.104	N.D. #

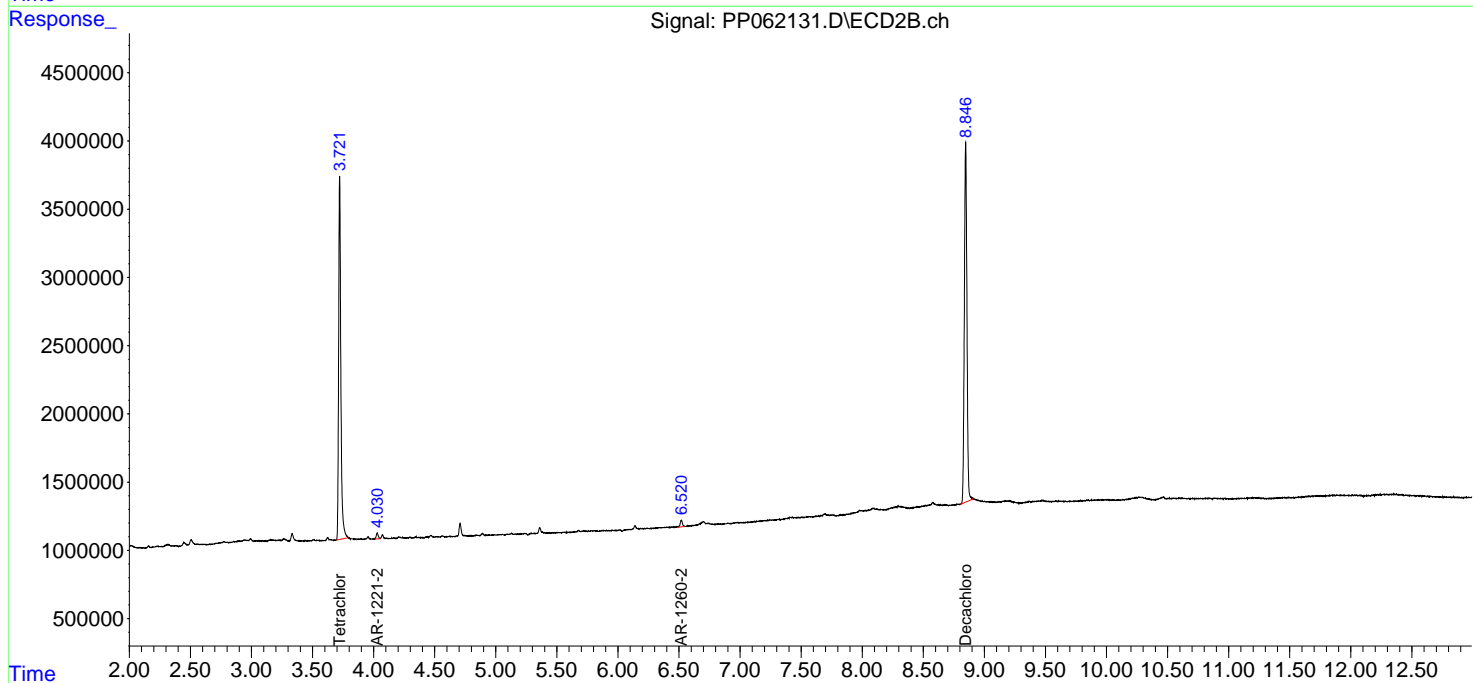
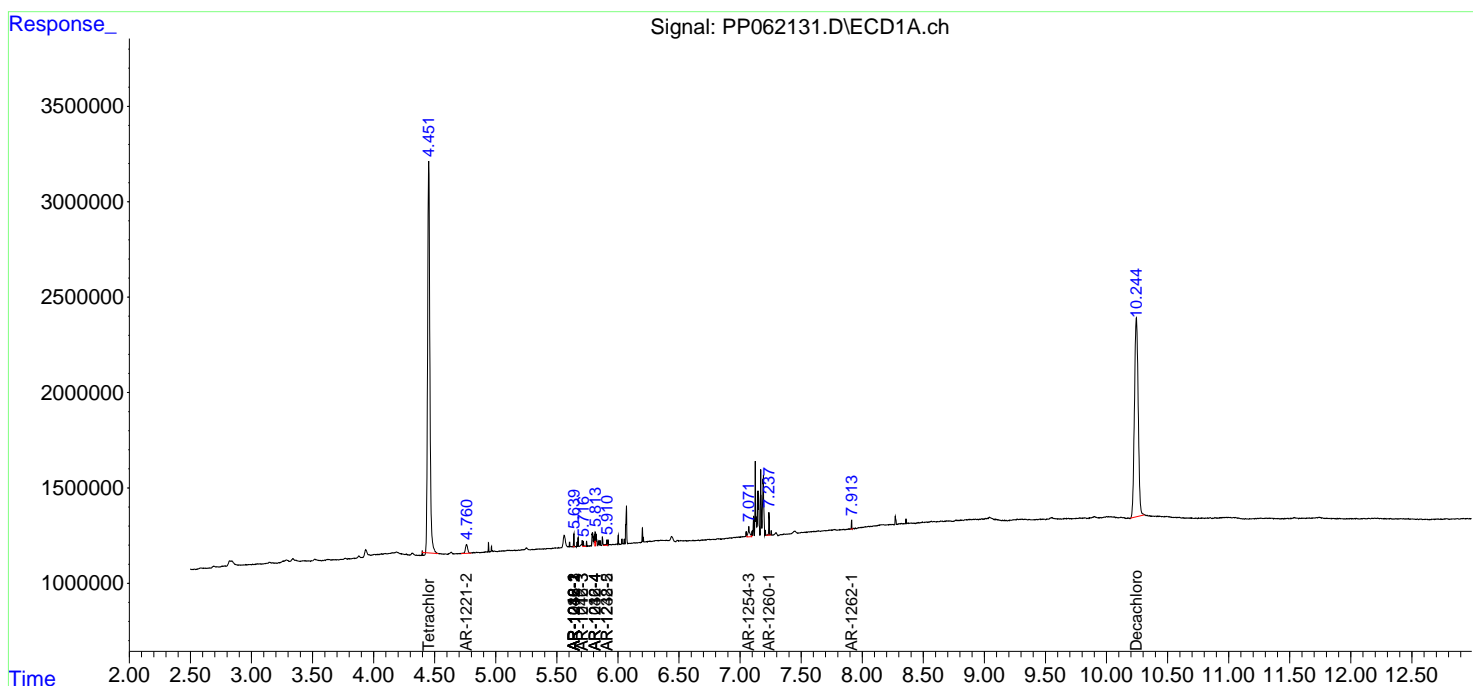
(f)=RT Delta > 1/2 Window (#)=Amounts differ by > 25% (m)=manual int.

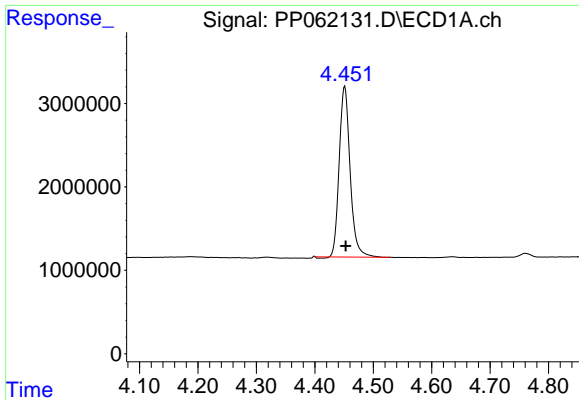
Data Path : Z:\pestpcbsrv\HPCHEM1\ECD_P\Data\PP120423\
 Data File : PP062131.D
 Signal(s) : Signal #1: ECD1A.ch Signal #2: ECD2B.ch
 Acq On : 04 Dec 2023 17:00
 Operator : YP\AJ
 Sample : I.BLK
 Misc :
 ALS Vial : 2 Sample Multiplier: 1

Instrument :
 ECD_P
 ClientSampleId :

Integration File signal 1: autoint1.e
 Integration File signal 2: autoint2.e
 Quant Time: Dec 04 17:16:27 2023
 Quant Method : Z:\pestpcbsrv\HPCHEM1\ECD_P\methods\PP112723.M
 Quant Title : GC EXTRACTABLES
 QLast Update : Tue Nov 28 04:28:00 2023
 Response via : Initial Calibration
 Integrator: ChemStation

Volume Inj. : 2 µl
 Signal #1 Phase : ZB-MR1 Signal #2 Phase: ZB-MR2
 Signal #1 Info : 30Mx0.32mmx 0.50µ Signal #2 Info : 30M x 0.32mm x 0.25µm

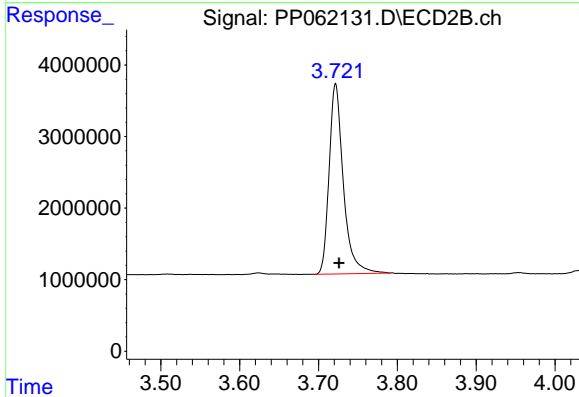




#1 Tetrachloro-m-xylene

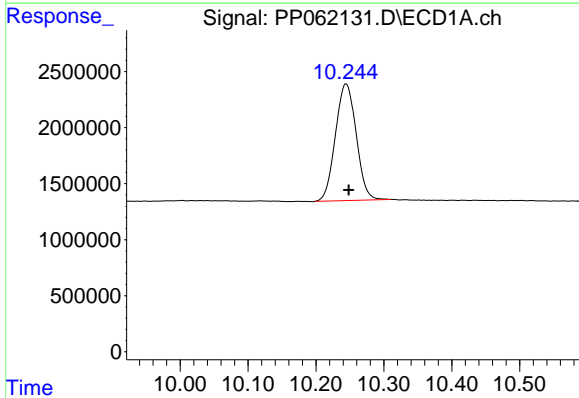
R.T.: 4.451 min
 Delta R.T.: -0.002 min
 Response: 26569617
 Conc: 20.18 ng/ml

Instrument :
 ECD_P
 ClientSampleId :



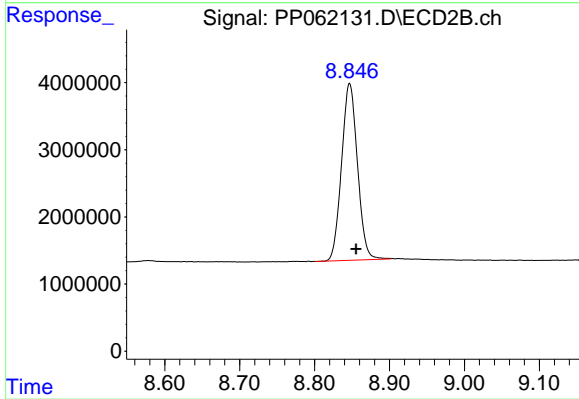
#1 Tetrachloro-m-xylene

R.T.: 3.722 min
 Delta R.T.: -0.004 min
 Response: 33302771
 Conc: 18.51 ng/ml



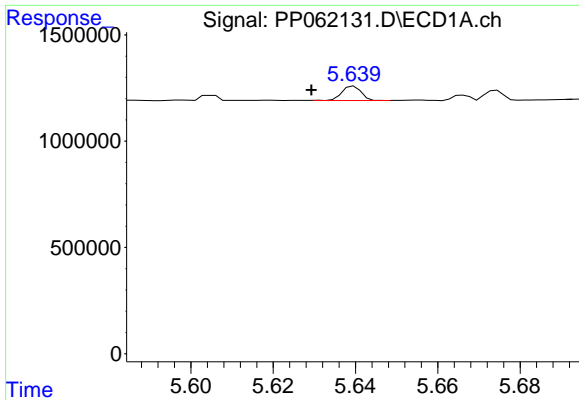
#2 Decachlorobiphenyl

R.T.: 10.244 min
 Delta R.T.: -0.004 min
 Response: 22220321
 Conc: 21.53 ng/ml



#2 Decachlorobiphenyl

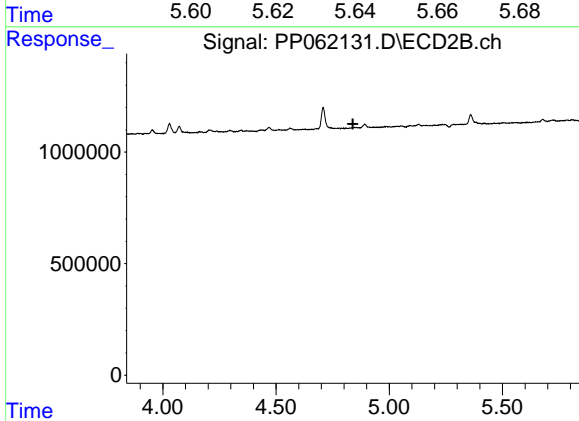
R.T.: 8.847 min
 Delta R.T.: -0.009 min
 Response: 38834602
 Conc: 18.82 ng/ml



#3 AR-1016-1

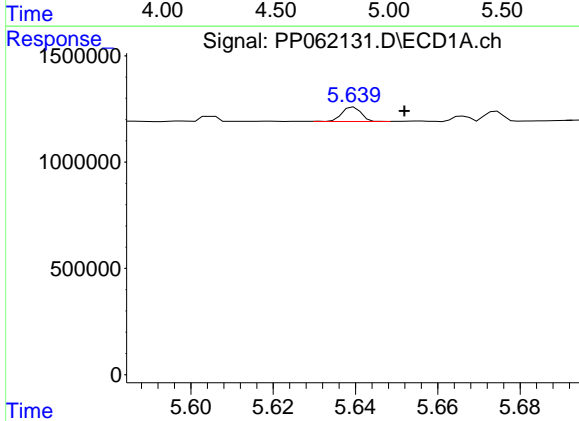
R.T.: 5.640 min
 Delta R.T.: 0.010 min
 Response: 219380
 Conc: 4.43 ng/ml

Instrument :
 ECD_P
 ClientSampleId :



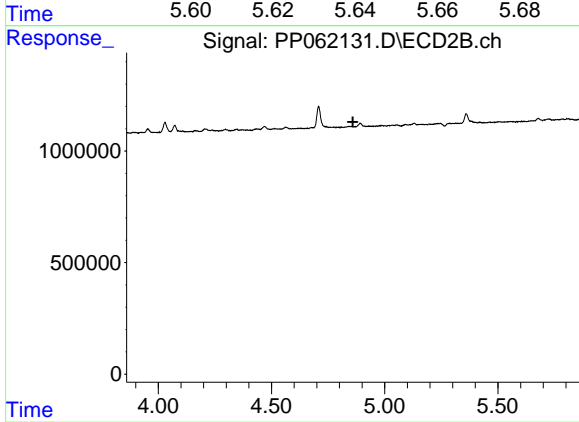
#3 AR-1016-1

R.T.: 0.000 min
 Exp R.T. : 4.840 min
 Response: 0
 Conc: N.D.



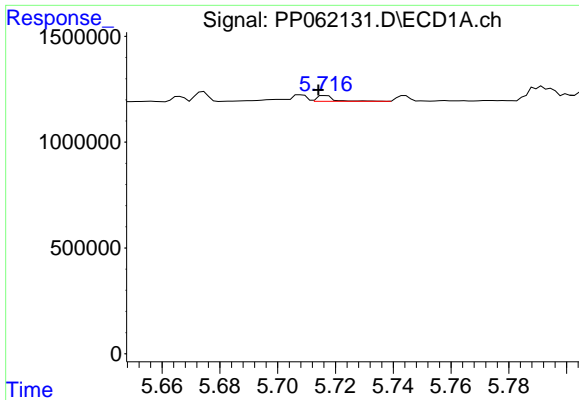
#4 AR-1016-2

R.T.: 5.640 min
 Delta R.T.: -0.012 min
 Response: 219380
 Conc: 2.94 ng/ml



#4 AR-1016-2

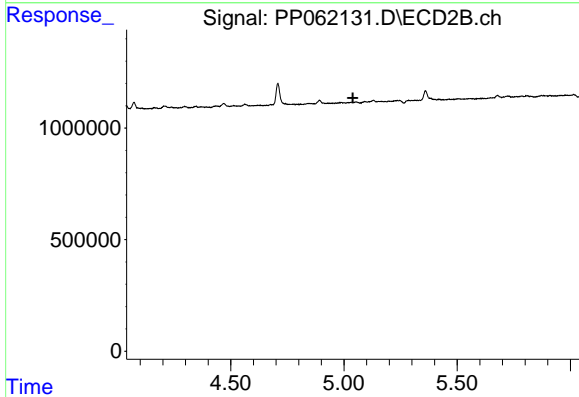
R.T.: 0.000 min
 Exp R.T. : 4.859 min
 Response: 0
 Conc: N.D.



#5 AR-1016-3

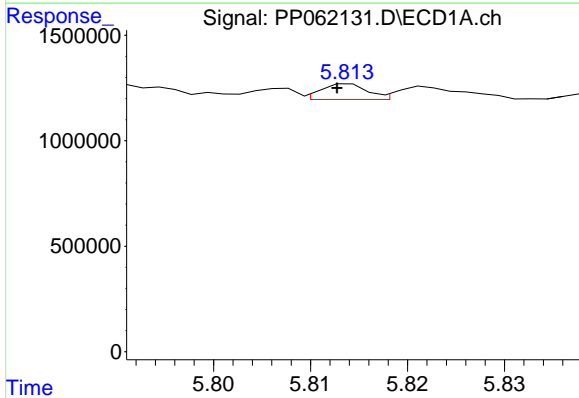
R.T.: 5.717 min
 Delta R.T.: 0.003 min
 Response: 107803
 Conc: 2.19 ng/ml

Instrument :
 ECD_P
 ClientSampleId :



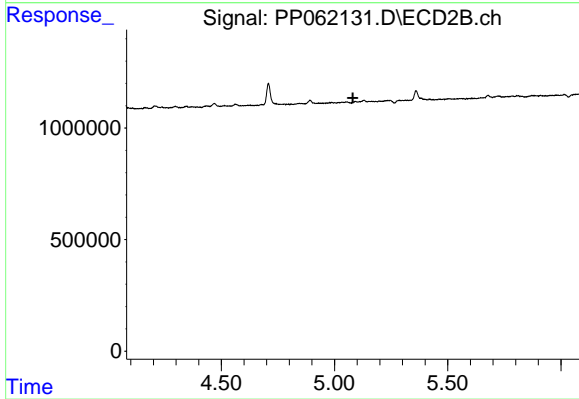
#5 AR-1016-3

R.T.: 0.000 min
 Exp R.T. : 5.039 min
 Response: 0
 Conc: N.D.



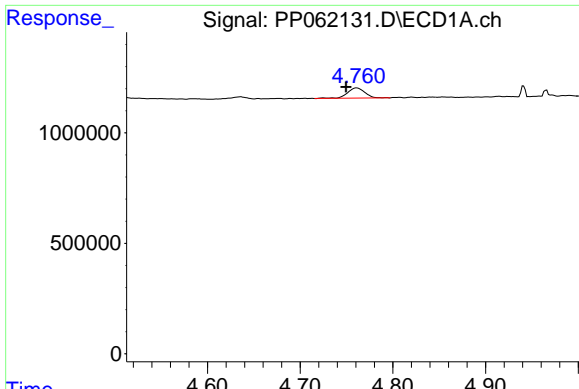
#6 AR-1016-4

R.T.: 5.814 min
 Delta R.T.: 0.001 min
 Response: 241938
 Conc: 6.37 ng/ml



#6 AR-1016-4

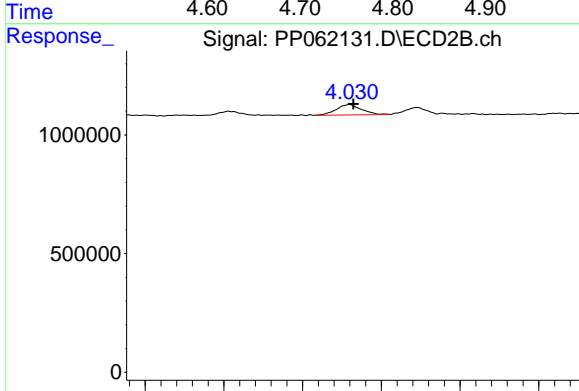
R.T.: 0.000 min
 Exp R.T. : 5.081 min
 Response: 0
 Conc: N.D.



#9 AR-1221-2

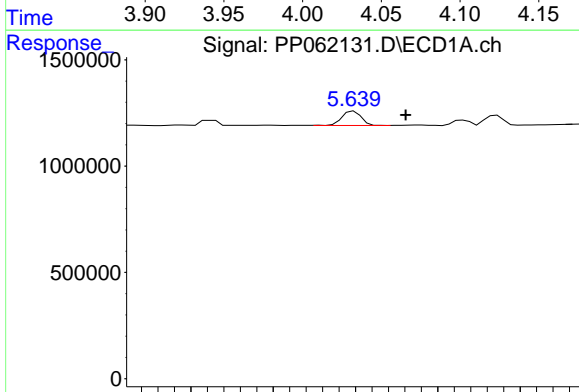
R.T.: 4.761 min
 Delta R.T.: 0.011 min
 Response: 604283
 Conc: 45.31 ng/ml

Instrument :
 ECD_P
 ClientSampleId :



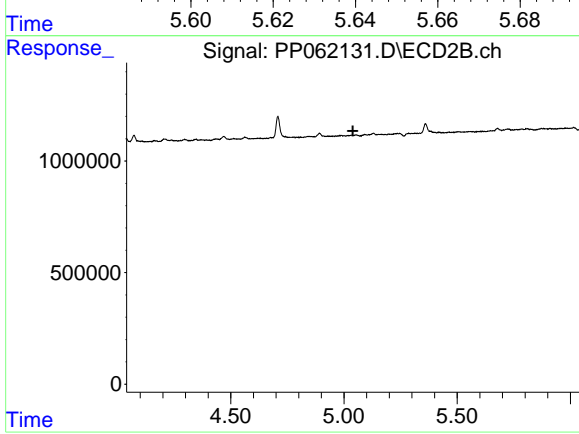
#9 AR-1221-2

R.T.: 4.030 min
 Delta R.T.: -0.002 min
 Response: 486328
 Conc: 25.57 ng/ml



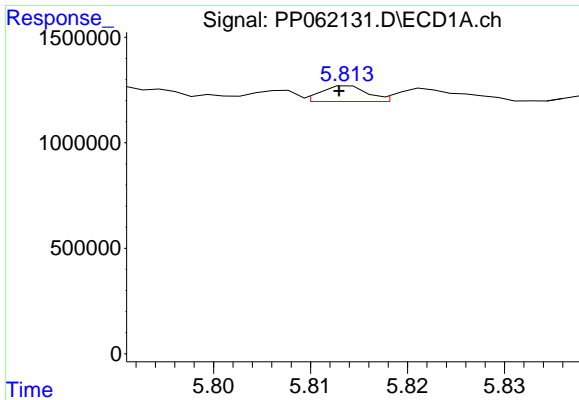
#13 AR-1232-3

R.T.: 5.640 min
 Delta R.T.: -0.013 min
 Response: 219380
 Conc: 6.46 ng/ml



#13 AR-1232-3

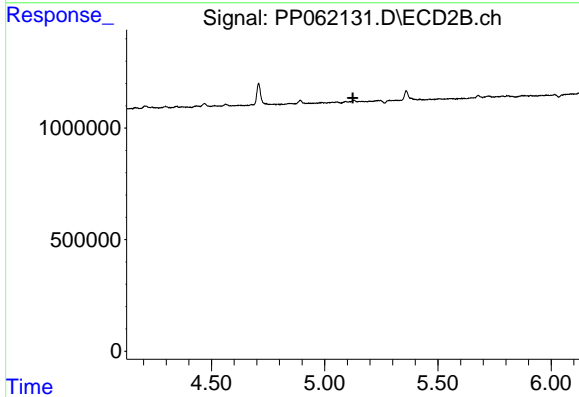
R.T.: 0.000 min
 Exp R.T.: 5.039 min
 Response: 0
 Conc: N.D.



#14 AR-1232-4

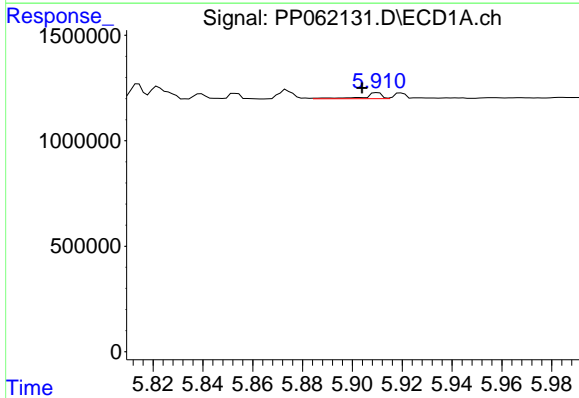
R.T.: 5.814 min
 Delta R.T.: 0.001 min
 Response: 241938
 Conc: 14.32 ng/ml

Instrument :
 ECD_P
 ClientSampleId :



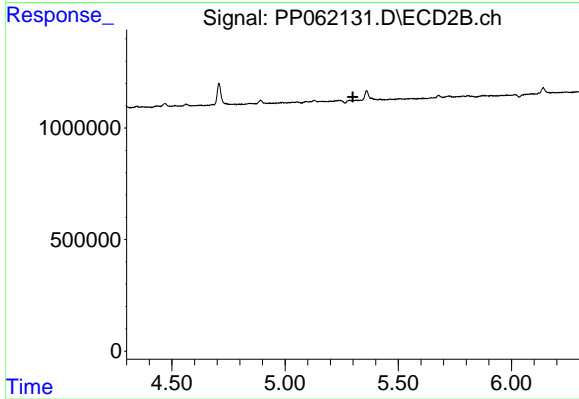
#14 AR-1232-4

R.T.: 0.000 min
 Exp R.T. : 5.124 min
 Response: 0
 Conc: N.D.



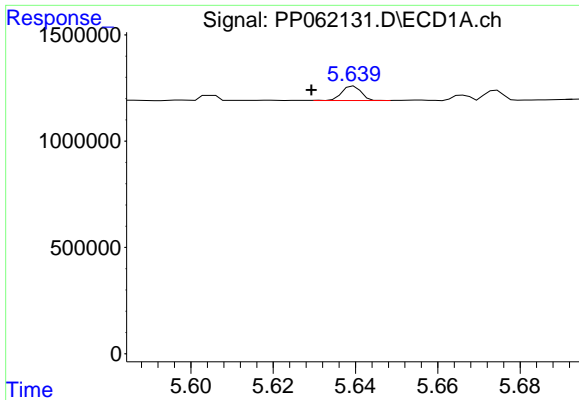
#15 AR-1232-5

R.T.: 5.910 min
 Delta R.T.: 0.006 min
 Response: 145697
 Conc: 9.67 ng/ml



#15 AR-1232-5

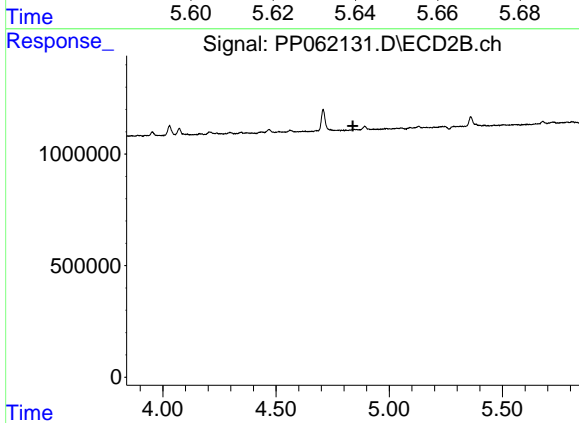
R.T.: 0.000 min
 Exp R.T. : 5.299 min
 Response: 0
 Conc: N.D.



#16 AR-1242-1

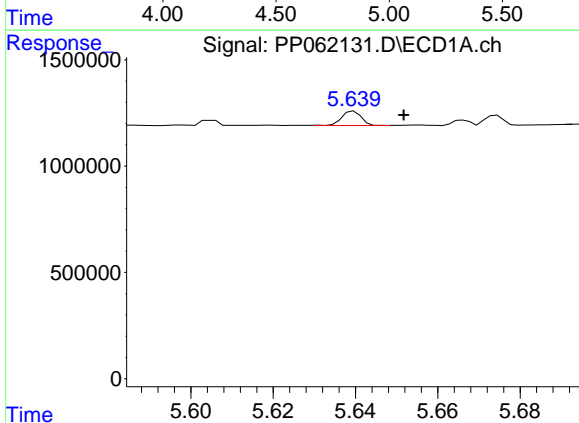
R.T.: 5.640 min
 Delta R.T.: 0.010 min
 Response: 219380
 Conc: 5.52 ng/ml

Instrument :
 ECD_P
 ClientSampleId :



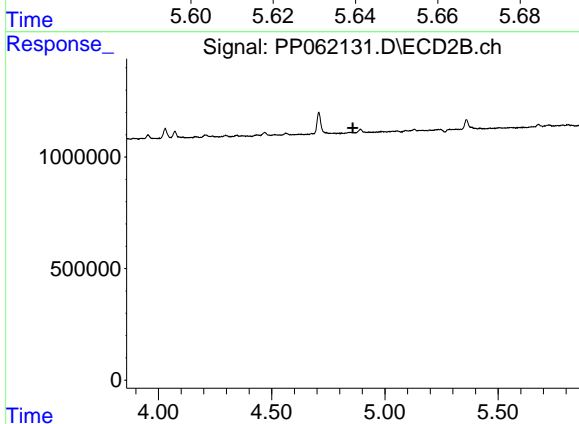
#16 AR-1242-1

R.T.: 0.000 min
 Exp R.T. : 4.839 min
 Response: 0
 Conc: N.D.



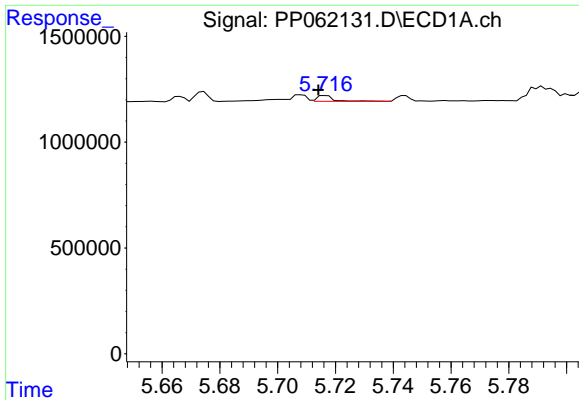
#17 AR-1242-2

R.T.: 5.640 min
 Delta R.T.: -0.012 min
 Response: 219380
 Conc: 3.69 ng/ml



#17 AR-1242-2

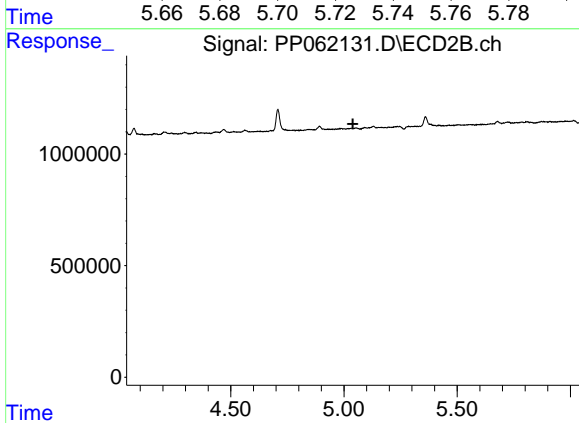
R.T.: 0.000 min
 Exp R.T. : 4.859 min
 Response: 0
 Conc: N.D.



#18 AR-1242-3

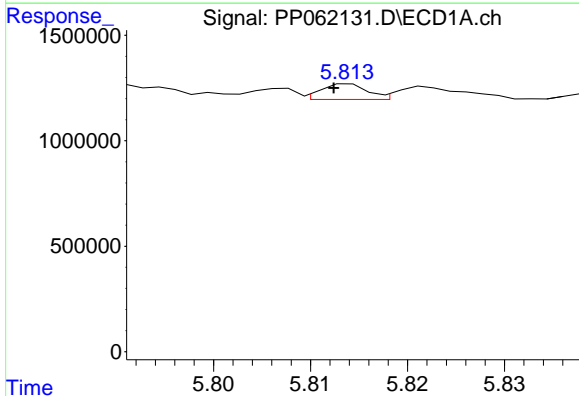
R.T.: 5.717 min
 Delta R.T.: 0.003 min
 Response: 107803
 Conc: 2.76 ng/ml

Instrument :
 ECD_P
 ClientSampleId :



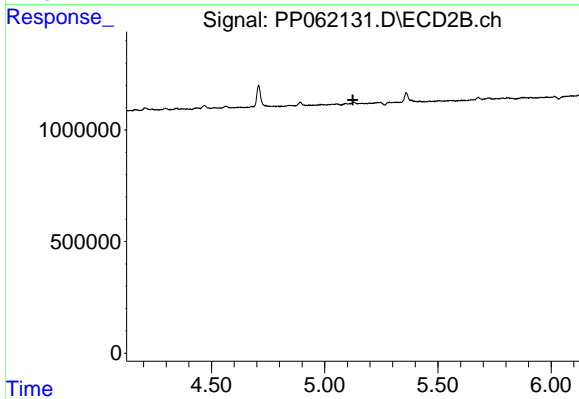
#18 AR-1242-3

R.T.: 0.000 min
 Exp R.T. : 5.039 min
 Response: 0
 Conc: N.D.



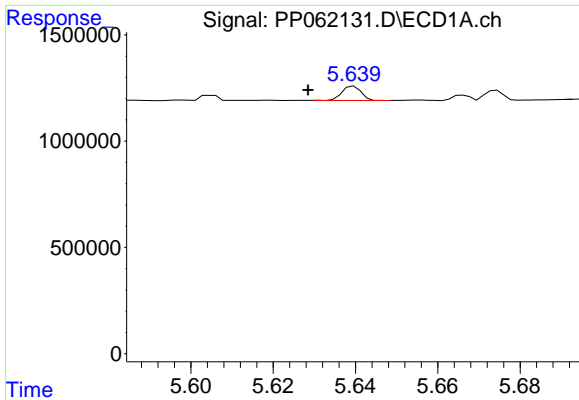
#19 AR-1242-4

R.T.: 5.814 min
 Delta R.T.: 0.002 min
 Response: 241938
 Conc: 7.98 ng/ml



#19 AR-1242-4

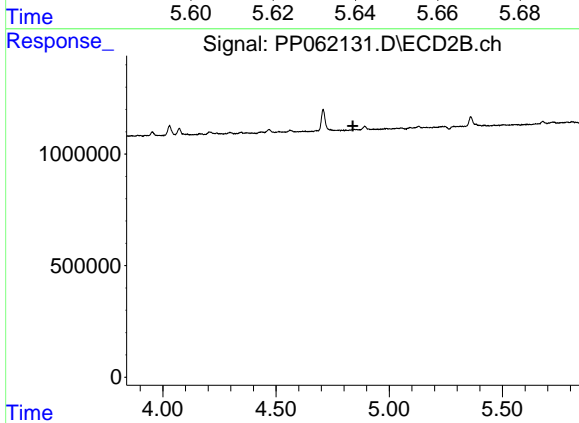
R.T.: 0.000 min
 Exp R.T. : 5.124 min
 Response: 0
 Conc: N.D.



#21 AR-1248-1

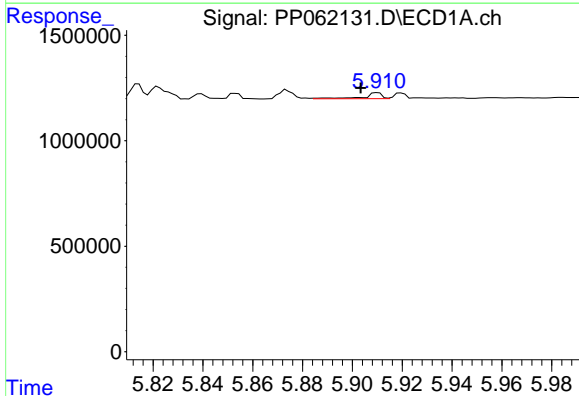
R.T.: 5.640 min
 Delta R.T.: 0.011 min
 Response: 219380
 Conc: 7.18 ng/ml

Instrument :
 ECD_P
 ClientSampleId :



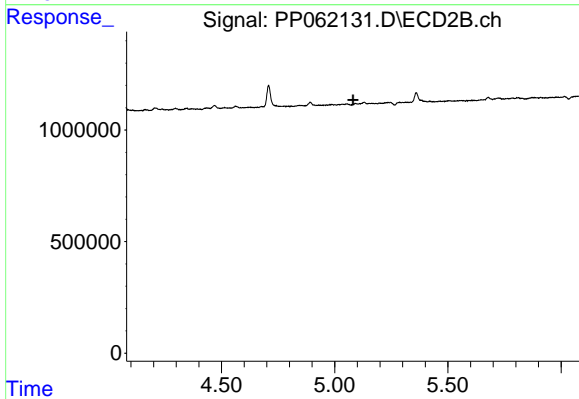
#21 AR-1248-1

R.T.: 0.000 min
 Exp R.T. : 4.839 min
 Response: 0
 Conc: N.D.



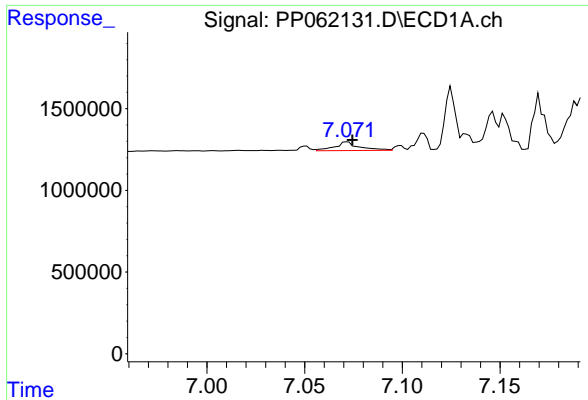
#22 AR-1248-2

R.T.: 5.910 min
 Delta R.T.: 0.007 min
 Response: 145697
 Conc: 2.98 ng/ml



#22 AR-1248-2

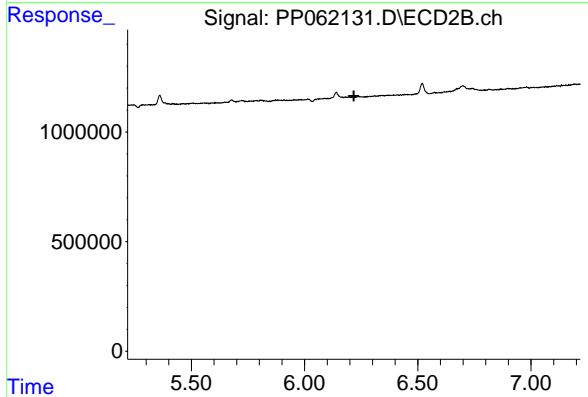
R.T.: 0.000 min
 Exp R.T. : 5.081 min
 Response: 0
 Conc: N.D.



#28 AR-1254-3

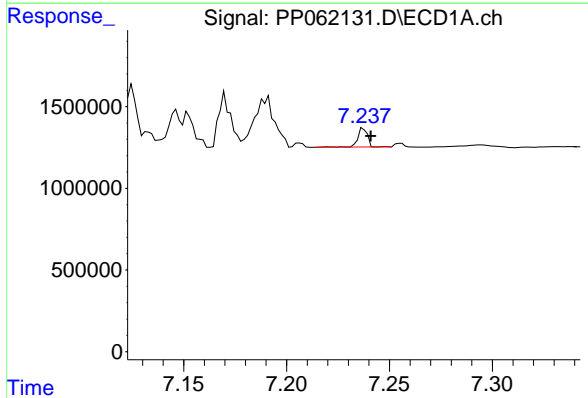
R.T.: 7.072 min
 Delta R.T.: -0.003 min
 Response: 462389
 Conc: 5.59 ng/ml

Instrument :
 ECD_P
 ClientSampleId :



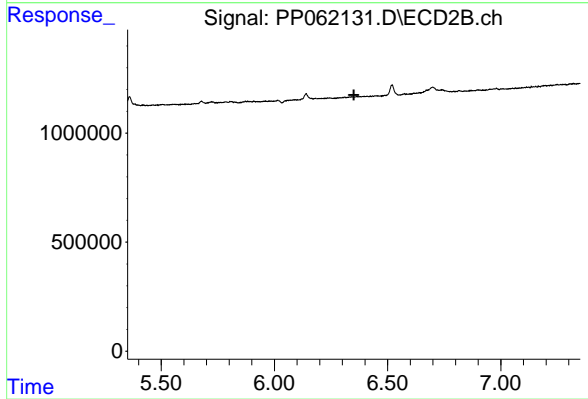
#28 AR-1254-3

R.T.: 0.000 min
 Exp R.T. : 6.217 min
 Response: 0
 Conc: N.D.



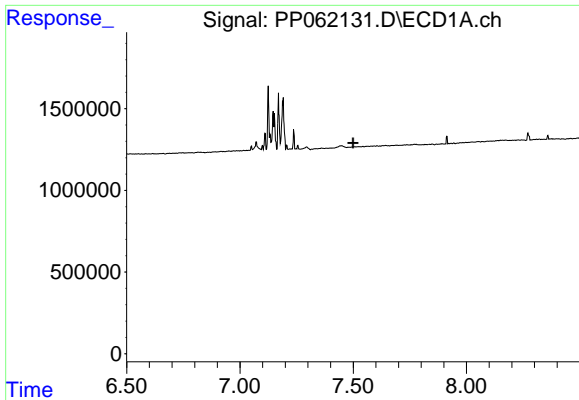
#31 AR-1260-1

R.T.: 7.238 min
 Delta R.T.: -0.003 min
 Response: 375901
 Conc: 5.50 ng/ml



#31 AR-1260-1

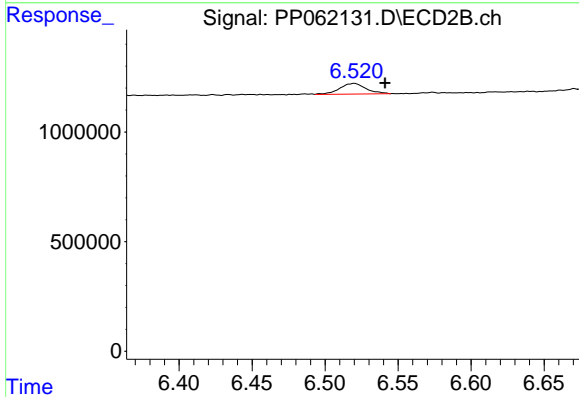
R.T.: 0.000 min
 Exp R.T. : 6.351 min
 Response: 0
 Conc: N.D.



#32 AR-1260-2

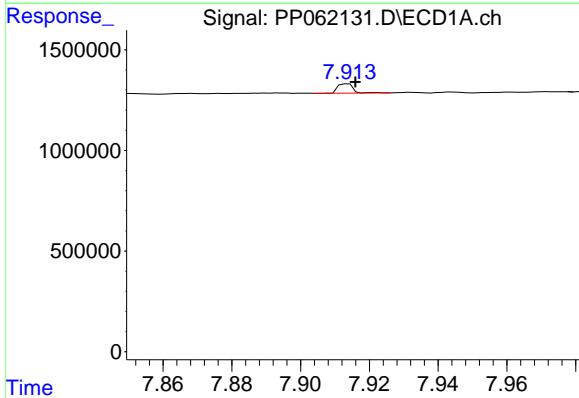
R.T.: 0.000 min
 Exp R.T. : 7.499 min
 Response: 0
 Conc: N.D.

Instrument :
 ECD_P
 ClientSampleId :



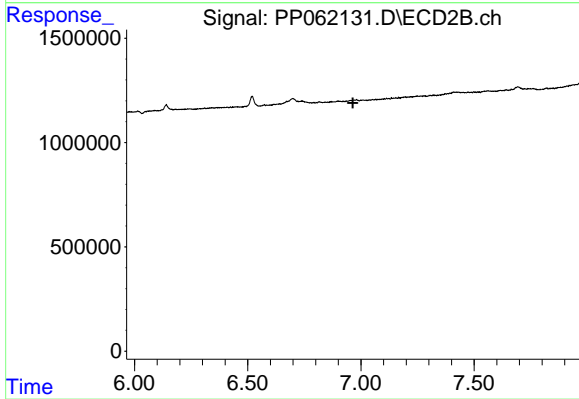
#32 AR-1260-2

R.T.: 6.520 min
 Delta R.T.: -0.021 min
 Response: 616831
 Conc: 4.53 ng/ml



#36 AR-1262-1

R.T.: 7.914 min
 Delta R.T.: -0.002 min
 Response: 145221
 Conc: 4.10 ng/ml



#36 AR-1262-1

R.T.: 0.000 min
 Exp R.T. : 6.965 min
 Response: 0
 Conc: N.D.