

Data Path : Z:\pestpcbsrv\HPCHEM1\ECD_P\Data\PP120518\
 Data File : PP028291.D
 Signal(s) : Signal #1: ECD1A.CH Signal #2: ECD2B.CH
 Acq On : 05 Dec 2018 15:10
 Operator : EI\MA
 Sample : J6204-06
 Misc :
 ALS Vial : 8 Sample Multiplier: 1

Instrument :
 ECD_P
 ClientSampleId :
 HLSP-SB-2A-(0-2)

Integration File signal 1: autoint1.e
 Integration File signal 2: autoint2.e
 Quant Time: Dec 06 16:22:26 2018
 Quant Method : Z:\pestpcbsrv\HPCHEM1\ECD_P\methods\PP110918.M
 Quant Title : 8080.M
 QLast Update : Fri Nov 09 17:06:51 2018
 Response via : Initial Calibration
 Integrator: ChemStation 6890 Scale Mode: Large solvent peaks clipped

Volume Inj. : 2 µl
 Signal #1 Phase : ZB-CLPesticides-1 Signal #2 Phase: ZB-CLPesticides-2
 Signal #1 Info : 30M x 0.32mm x0.5 Signal #2 Info : 30M x 0.32mm x 0.25µm

Compound	RT#1	RT#2	Resp#1	Resp#2	ng/ml	ng/ml
----------	------	------	--------	--------	-------	-------

 System Monitoring Compounds

4) S	2,4-DCAA	12.092	12.204	124.8E6	143.4E6	479.503	337.854 #
------	----------	--------	--------	---------	---------	---------	-----------

Target Compounds

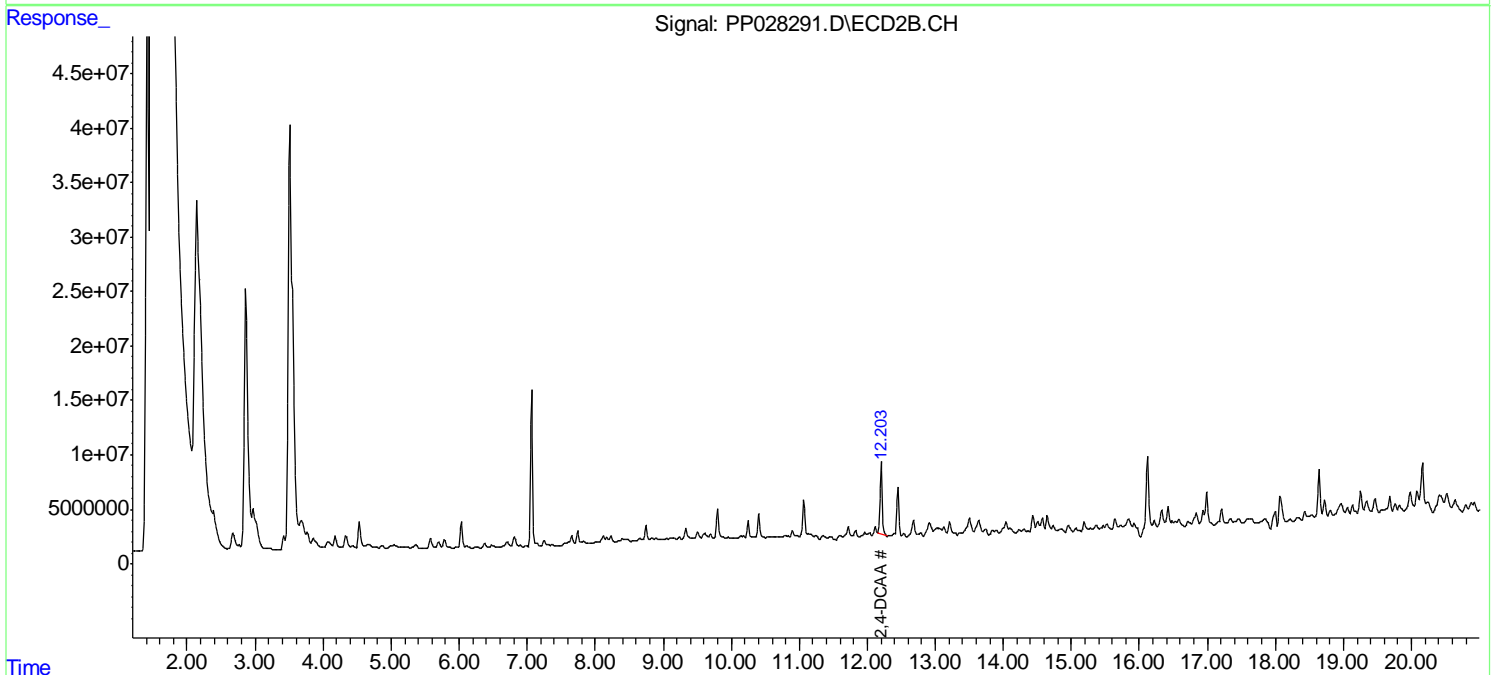
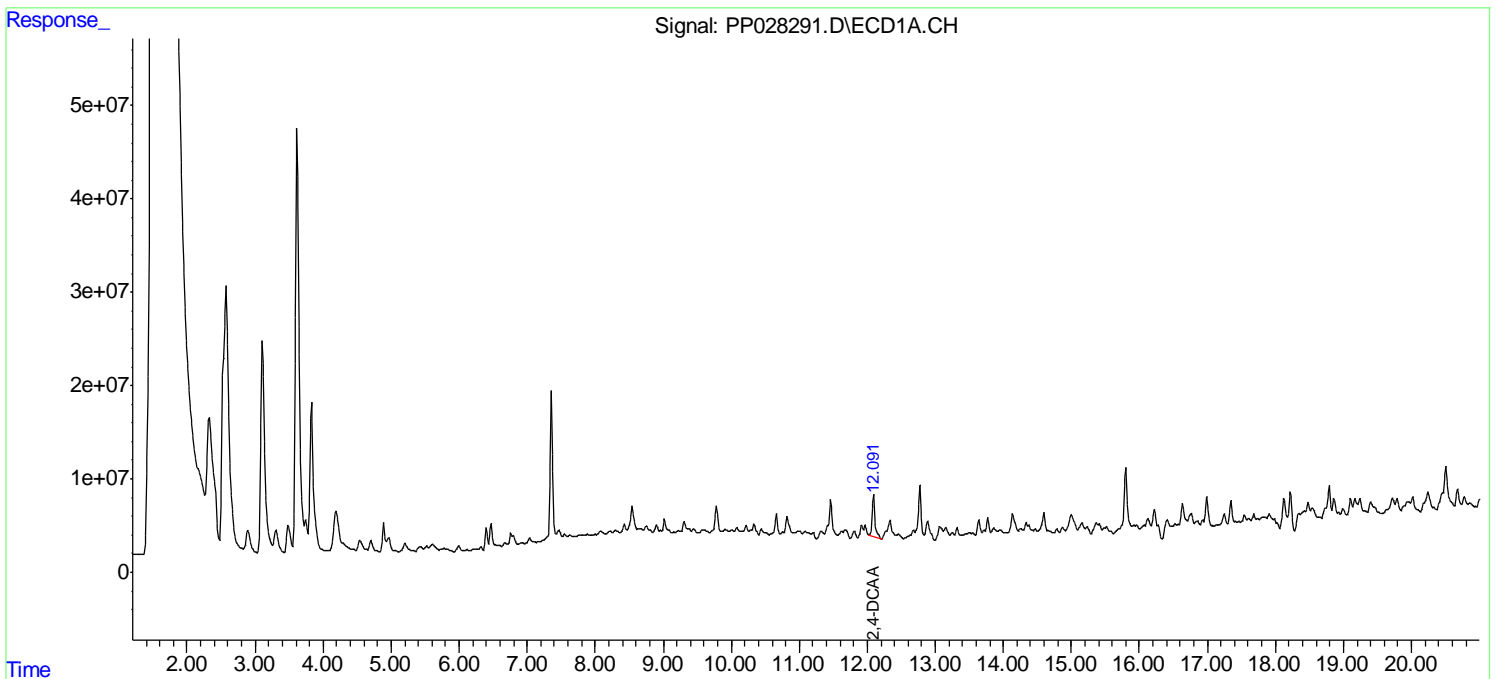
(f)=RT Delta > 1/2 Window (#)=Amounts differ by > 25% (m)=manual int.

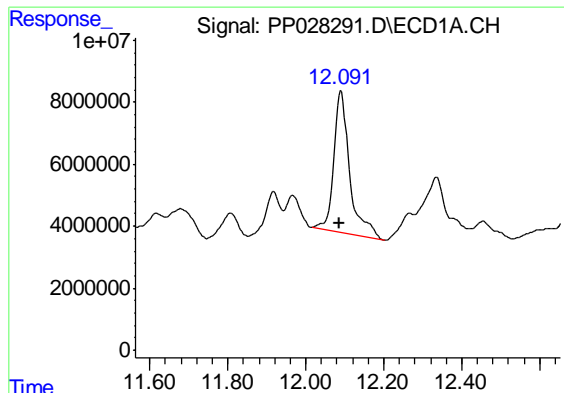
Data Path : Z:\pestpcbsrv\HPCHEM1\ECD_P\Data\PP120518\
 Data File : PP028291.D
 Signal(s) : Signal #1: ECD1A.CH Signal #2: ECD2B.CH
 Acq On : 05 Dec 2018 15:10
 Operator : EI\MA
 Sample : J6204-06
 Misc :
 ALS Vial : 8 Sample Multiplier: 1

Instrument :
 ECD_P
 ClientSampled :
 HLSP-SB-2A-(0-2)

Integration File signal 1: autoint1.e
 Integration File signal 2: autoint2.e
 Quant Time: Dec 06 16:22:26 2018
 Quant Method : Z:\pestpcbsrv\HPCHEM1\ECD_P\methods\PP110918.M
 Quant Title : 8080.M
 QLast Update : Fri Nov 09 17:06:51 2018
 Response via : Initial Calibration
 Integrator: ChemStation 6890 Scale Mode: Large solvent peaks clipped

Volume Inj. : 2 µl
 Signal #1 Phase : ZB-CLPesticides-1 Signal #2 Phase: ZB-CLPesticides-2
 Signal #1 Info : 30M x 0.32mm x0.5 Signal #2 Info : 30M x 0.32mm x 0.25µm

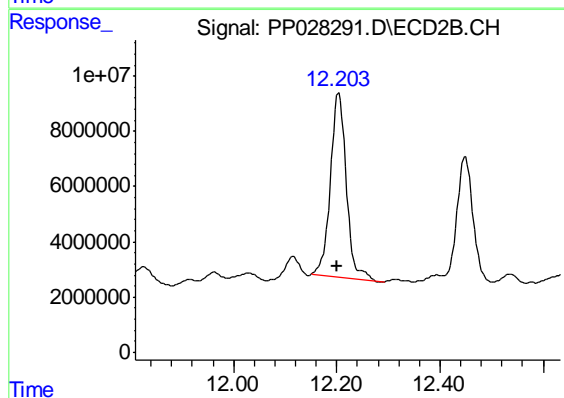




#4 2,4-DCAA

R.T.: 12.092 min
Delta R.T.: 0.004 min
Response: 124818113
Conc: 479.50 ng/ml

Instrument :
ECD_P
ClientSampleId :
HLSP-SB-2A-(0-2)



#4 2,4-DCAA

R.T.: 12.204 min
Delta R.T.: 0.003 min
Response: 143394238
Conc: 337.85 ng/ml